

# Air Conditioning

## Product Information

**SLZ-KA25VAQ3** (Single Phase)  
**Inverter Heat Pump**  
600 x 600 4-Way Blow  
Ceiling Cassette System

Making a  
World of  
Difference

mr.slim™



The SLZ-KA series is perfect for small business applications, as it offers inverter technology alongside quiet operation. The compact size of this unit is ideal for 600 by 600mm ceilings with a low height making installation very easy. This unit also comes complete with a long life filter that will last for approximately 2,500 hours.

### Key Features

- Swing Vane Mode with Auto Vane Shutter
- Optimised Rotary or Scroll Compressor
- Inverter Control - adjusts performance to economically match the demand for heating or cooling
- Drain Lift Pump - as standard
- Auto-Changeover
- Quiet operation
- Replace technology available
- Hot Start - draught prevention
- Low unit height - minimal intrusion into occupied space
- Double thermostat function - controls the temperature via a sensor in the controller or the unit (wired remote controllers only)



Air Conditioning | Heating  
Ventilation | Controls

# Air Conditioning

## Product Information

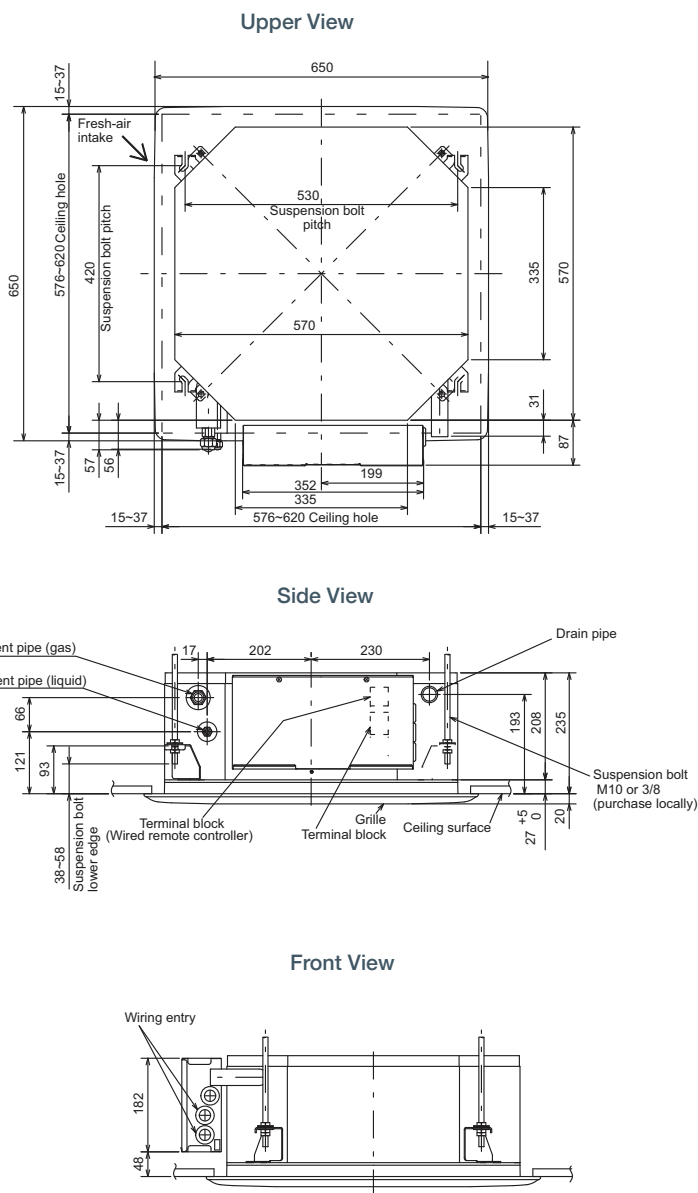
**SLZ-KA25VAQ3** (Single Phase)  
**Inverter Heat Pump**  
 600 x 600 4-Way Blow  
 Ceiling Cassette System

Making a  
 World of  
 Difference

SLZ-KA-VAQ - INDOOR UNITS		SLZ-KA25VAQ3
CAPACITY (kW)	Heating (nominal)	3.2 (1.3-4.5)
	Cooling (nominal)	2.6 (1.5-3.2)
	Heating (UK)	2.72 (1.11-3.83)
	Cooling (UK)	2.39 (1.38-2.94)
SHF (nominal & UK)		0.86
COP / EER (nominal)		3.90 / 4.00
SCOP / SEER (BS EN14825)		4.3 / 5.5
ErP ENERGY EFFICIENCY CLASS	Heating/Cooling	A+ / A
AIRFLOW (l/s)	Lo-Mi-Hi	133-150-183
PIPE SIZE mm (in)	Gas	9.52 (3/8")
	Liquid	6.35 (1/4")
SOUND PRESSURE LEVEL (dBA)	Lo-Mi-Hi	29-33-38
SOUND POWER LEVEL (dBA)		57
DIMENSIONS (mm)	Width x Depth x Height	570 (650) x 570 (650) x 235 (20)
WEIGHT (kg)	Unit / Grille	16 / 3
ELECTRICAL SUPPLY		Fed by Outdoor Unit
FUSE RATING (BS88) - HRC (A)		6
INTERCONNECTING CABLE No. Cores		4
GRILLE REFERENCE		SLP-2AAW
WIRED REMOTE CONTROLLER REFERENCE		PAR-31MAA

SUZ-KA-VA4 - OUTDOOR UNITS		SUZ-KA25VA4
SOUND PRESSURE LEVEL (dBA)	Heating/Cooling	48 / 47
SOUND POWER LEVEL (dBA)	Cooling	58
WEIGHT (kg)		30
DIMENSIONS (mm)	Width x Depth x Height	800 x 285 x 550
ELECTRICAL SUPPLY		220-240v, 50Hz
PHASE		Single
SYSTEM POWER	Heating/Cooling (nominal)	0.85 / 0.70
INPUT (kW)	Heating/Cooling (UK)	0.68 / 0.60
STARTING CURRENT (A)		3.9
SYSTEM RUNNING CURRENT (A)	Heating/Cooling [MAX]	3.32 / 2.84 [7.4]
FUSE RATING (BS88) - HRC (A)		10
MAINS CABLE No. Cores		3
MAX PIPE LENGTH (m)		20
MAX HEIGHT DIFFERENCE (m)		12
CHARGE R410A (kg) - 7m		0.8

## DIMENSIONS



Telephone: 01707 282880

email: [air.conditioning@meuk.mee.com](mailto:air.conditioning@meuk.mee.com) web: [www.airconditioning.mitsubishielectric.co.uk](http://www.airconditioning.mitsubishielectric.co.uk)

UNITED KINGDOM Mitsubishi Electric Europe Living Environmental Systems Division  
 Travellers Lane, Hatfield, Hertfordshire, AL10 8XB, England General Enquiries Telephone: 01707 282880 Fax: 01707 278881

IRELAND Mitsubishi Electric Europe Westgate Business Park, Ballymount, Dublin 24, Ireland  
 Telephone: Dublin (01) 419 8800 Fax: Dublin (01) 419 8890 International code: (003531)

Country of origin: United Kingdom - Japan - Thailand - Malaysia. ©Mitsubishi Electric Europe 2015. Mitsubishi and Mitsubishi Electric are trademarks of Mitsubishi Electric Europe B.V. The company reserves the right to make any variation in technical specification to the equipment described, or to withdraw or replace products without prior notification or public announcement. Mitsubishi Electric is constantly developing and improving its products. All descriptions, illustrations, drawings and specifications in this publication present only general particulars and shall not form part of any contract. All goods are supplied subject to the Company's General Conditions of Sale, a copy of which is available on request. Third-party product and brand names may be trademarks or registered trademarks of their respective owners.



**Note:** The fuse rating is for guidance only. Please refer to the relevant databook for detailed specification. It is the responsibility of a qualified electrician/electrical engineer to select the correct cable size and fuse rating based on current regulation and site specific conditions. Mitsubishi Electric's air conditioning and heat pump systems contain fluorinated greenhouse gases R410A, R407C and R134a.



[www.greengateway.mitsubishielectric.co.uk](http://www.greengateway.mitsubishielectric.co.uk)

Mitsubishi Electric UK's commitment  
 to the environment

Follow us @meuk\_Jes  
 Follow us @green\_gateway

Mitsubishi Electric  
 Living Environmental Systems UK

YouTube [mitsubishielectric2](https://www.youtube.com/mitsubishielectric2)

Effective as of April 2015