

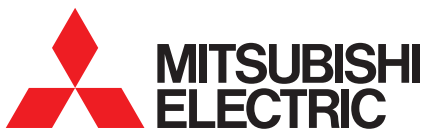


**Remote Monitoring Interface (RMI)** allows remote monitoring of up to 2,100 M Series, Mr Slim, City Multi, Lossnay and Commercial Heating (CAHV / CRHV) indoor units.

RMI allows users to monitor the performance of their equipment including setting functions, controlling consumption and viewing the operating status via their PC or smart devices.

#### Key Features

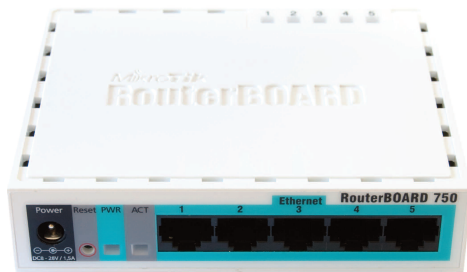
- PC / Tablet / Smartphone
- LAN connection to broadband router or network
- Control up to 42 centralised controllers (2,100 indoor units)
- Temperature and airflow setpoint
- Hot and cold water management
- 7 day weekly scheduling
- Field service commissioning included



Air Conditioning | Heating  
Ventilation | Controls



#### RMI ROUTER

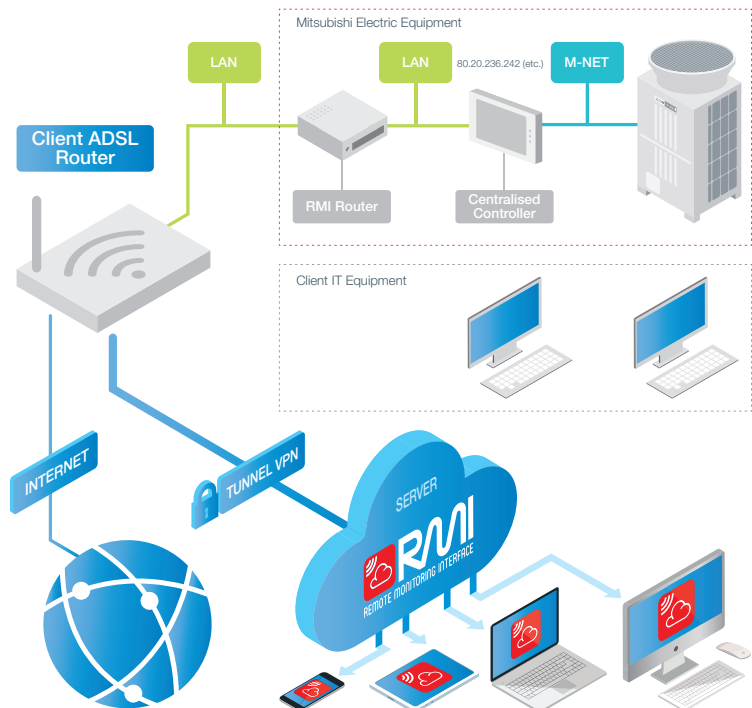


#### SOLUTION INTERFACE

#### RMI LAN

|                                      |   |
|--------------------------------------|---|
| Description                          | Remote Control & Monitoring Interface   |
| Connect to                           | AE-200E & EW-50E  |
| Max Number of Units                  | 2,100   |
| Compatibility                        | M Series, Mr Slim, City Multi, Lossnay and Commercial Heating (CAHV / CRHV)   |
| Power Supply                         | 220-240v, 50Hz  |
| Dimensions (mm) (WxDxH)              | 113 x 28 x 89   |
| SMS / GPRS Capabilities              | x   |
| Ethernet Capabilities                | ✓   |
| SIM Card Provided                    | x   |
| Inputs                               | x   |
| Outputs                              | x   |
| Control                              | On / Off ✓<br>Mode ✓<br>Setpoint ✓<br>Fan Speed ✓<br>Air Direction ✓<br>Permit / Prohibit ✓<br>Filter Sign ✓  |
| Monitor                              | On / Off ✓<br>Mode ✓<br>Setpoint ✓<br>Fan Speed ✓<br>Air Direction ✓<br>Permit / Prohibit ✓<br>Filter Sign ✓<br>Fault Codes ✓<br>Room Temperature ✓ |
| Weekly Schedule                      | ✓   |
| Annual Schedule                      | ✓   |
| Night Setback                        | ✓   |
| Web Pages                            | ✓   |
| Optimised Start                      | x   |
| Automatic Setpoint Adjustment        | x   |
| Load Shedding                        | x   |
| Occupied / Unoccupied Settings reset | x   |
| Simple Energy Monitoring             | ✓   |

#### SYSTEM DIAGRAM



#### RMI SITE REQUIREMENTS

- Fully commissioned site with fully operational City Multi VRF systems
- City Multi VRF commissioning log book correctly completed per system
- Drawings of areas served by each centralised controller made available
- AE-200E / EW-50E fully installed and commissioned with group names all labelled correctly
- All centralised controllers LAN network connected to Remote Monitoring Interface (RMI) router location with spare LAN CAT5 port for RMI router within 1 metre of RMI router
- 230v AC mains power socket within 1 metre of RMI router
- RMI user names and email addresses need to be confirmed, complete with access level per RMI account user

These conditions **MUST** all be met for RMI to be supplied and commissioned.



Telephone: 01707 282880

email: [air.conditioning@meuk.mee.com](mailto:air.conditioning@meuk.mee.com) web: [www.airconditioning.mitsubishielectric.co.uk](http://www.airconditioning.mitsubishielectric.co.uk)

UNITED KINGDOM Mitsubishi Electric Europe Living Environmental Systems Division  
Travellers Lane, Hatfield, Hertfordshire, AL10 8XB, England General Enquiries Telephone: 01707 282880 Fax: 01707 278881

IRELAND Mitsubishi Electric Europe Westgate Business Park, Ballymount, Dublin 24, Ireland  
Telephone: Dublin (01) 419 8800 Fax: Dublin (01) 419 8890 International code: (003531)

Country of origin: United Kingdom - Japan - Thailand - Malaysia. ©Mitsubishi Electric Europe 2017. Mitsubishi and Mitsubishi Electric are trademarks of Mitsubishi Electric Europe B.V. The company reserves the right to make any variation in technical specification to the equipment described, or to withdraw or replace products without prior notification or public announcement. Mitsubishi Electric is constantly developing and improving its products. All descriptions, illustrations, drawings and specifications in this publication present only general particulars and shall not form part of any contract. All goods are supplied subject to the Company's General Conditions of Sale, a copy of which is available on request. Third-party product and brand names may be trademarks or registered trademarks of their respective owners.



Note: The fuse rating is for guidance only. Please refer to the relevant databook for detailed specification. It is the responsibility of a qualified electrician/electrical engineer to select the correct cable size and fuse rating based on current regulation and site specific conditions. Mitsubishi Electric's air-conditioning equipment and heat pump systems contain a fluorinated greenhouse gas, R410A(GWP:2088), R32(GWP:675), R407C (GWP:1774) or R134a (GWP:1430). \*These GWP values are based on Regulation(EU) No 517/2014 from IPCC 4th edition. In case of Regulation (EU) No.626/2011 from IPCC 3rd edition, these are as follows: R410A(GWP:1975), R32(GWP: 550), R407C (GWP:1650) or R134a(GWP:1300).



[www.greengateway.mitsubishielectric.co.uk](http://www.greengateway.mitsubishielectric.co.uk)

Mitsubishi Electric UK's commitment  
to the environment



Follow us @meuk\_jes  
Follow us @green\_gateway



Mitsubishi Electric  
Living Environmental Systems UK



mitsubishielectric2

Effective as of March 2017