

Air Conditioning

Product Information

MSZ-LN

Wall Mounted Indoor Unit +
PAC-LV11M LEV Kit Interface

Making a
World of
Difference

CITY MULTI



The **MSZ-LN** range is a wall mounted system that blends energy efficiency with a sophisticated streamlined design. Finished with a range of deep, rich colours and a premium quality feel, this range enhances a City Multi VRF system.

Key Features

- 3D i-see sensor provides customised comfort by automatically monitoring room occupancy, position and body temperatures
- Plasma Quad Plus filter uses powerful plasma technology to filter out even microscopic particles
- Dual-Barrier Coating to the heat exchanger, fan and air duct prevents dust and grease accumulation
- Built-in Wi-Fi interface enabling control and monitoring via the MELCloud app
- Recognised by the Noise Abatement Society and awarded the Quiet Mark for industry leading low noise levels



Cooling | Heating | Ventilation | Controls

Air Conditioning

Product Information

MSZ-LN Wall Mounted Indoor Unit + PAC-LV11M LEV Kit Interface

Making a
World of
Difference



Ruby Red (R)



Onyx Black (B)



Pearl White (V)



Natural White (W)



INDOOR UNITS		MSZ-LN25VG R/B/V/W	MSZ-LN35VG R/B/V/W	MSZ-LN50VG R/B/V/W
CAPACITY (kW)	Heating (nominal)	3.2	4.0	6.0
	Cooling (nominal)	2.5	3.5	5.0
POWER INPUT (kW)	Heating (UK)	2.64	3.3	4.94
	Cooling (UK)	2.48	3.47	4.95
AIRFLOW (l/s)	Heating (nominal)	0.029	0.029	0.034
	Cooling (nominal)	0.02	0.024	0.029
SOUND PRESSURE LEVEL (dBA)	Heating (SLo-Lo-Mi-Hi-SHi)	67-95-118-142-240	71-97-118-142-228	90-107-142-178-262
	Cooling (SLo-Lo-Mi-Hi-SHi)	71-97-118-147-198	71-97-118-147-213	95-127-148-177-232
WEIGHT (kg)	Heating (SLo-Lo-Mi-Hi-SHi)	19-24-29-36-45	19-24-29-36-45	25-29-34-39-47
	Cooling (SLo-Lo-Mi-Hi-SHi)	19-23-29-36-42	19-24-29-36-43	27-31-35-39-46
DIMENSIONS (mm)	Width	15.5	15.5	15.5
	Depth	890	890	890
ELECTRICAL SUPPLY	Height	233	233	233
		307	307	307
ELECTRICAL SUPPLY		Fed by PAC-LV11M	Fed by PAC-LV11M	Fed by PAC-LV11M
RUNNING CURRENT (A)		0.28 / 0.21	0.28 / 0.23	0.33 / 0.28
FUSE RATING (BS88) - HRC (A)		6	6	6
INTERCONNECTING CABLES NO. CORES		3	3	3

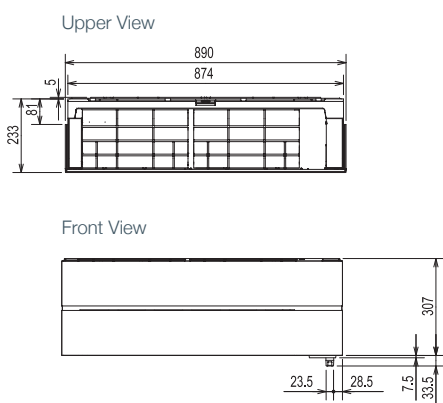
Notes: Ruby Red (R), Onyx Black (B), Pearl White (V), Natural White (W)

LEV KIT INTERFACE		PAC-LV11M
PIPE SIZE (mm) (in)	Gas / Liquid	- / 6.35 (1/4")
WEIGHT (kg)		3.5
DIMENSIONS (mm)	Width x Depth x Height	355 x 142 x 183
ELECTRICAL SUPPLY		220-240V, 50Hz, Single Phase
FUSE RATING (BS88) - HRC (A)		6
MAINS CABLE NO. CORES		3

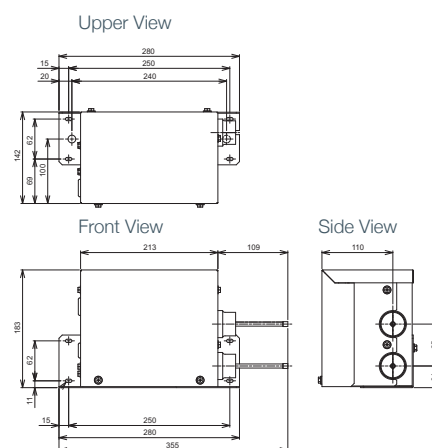
These indoor units cannot be grouped with other City Multi indoor units. Group control with other M Series indoor units + PAC-LV11M is possible via ME controller or system controller only. Group control is not possible via an MA controller, IT terminal or wireless remote controller. ME control functions energy management, charge apportioning, interlock and free contact are not available.

PRODUCT DIMENSIONS

MSZ-LN25/35/50VG R/B/V/W



PAC-LV11M



Telephone: 01707 282880
email: air.conditioning@meuk.mee.com
web: airconditioning.mitsubishielectric.co.uk

UNITED KINGDOM Mitsubishi Electric Europe Living Environment Systems Division
Travellers Lane, Hatfield, Hertfordshire, AL10 8XB, England General Enquiries Telephone: 01707 282880 Fax: 01707 278881
IRELAND Mitsubishi Electric Europe Westgate Business Park, Ballymount, Dublin 24, Ireland
Telephone: Dublin (01) 419 8800 Fax: Dublin (01) 419 8890 International code: (003531)

Country of origin: United Kingdom - Japan - Thailand - Malaysia. ©Mitsubishi Electric Europe 2017. Mitsubishi and Mitsubishi Electric are trademarks of Mitsubishi Electric Europe B.V. The company reserves the right to make any variation in technical specification to the equipment described, or to withdraw or replace products without prior notification or public announcement. Mitsubishi Electric is constantly developing and improving its products. All descriptions, illustrations, drawings and specifications in this publication present only general particulars and shall not form part of any contract. All goods are supplied subject to the Company's General Conditions of Sale, a copy of which is available on request. Third-party product and brand names may be trademarks or registered trademarks of their respective owners.

Note: The fuse rating is for guidance only. Please refer to the relevant databook for detailed specification. It is the responsibility of a qualified electrician/electrical engineer to select the correct cable size and fuse rating based on current regulation and site specific conditions. Mitsubishi Electric's air conditioning equipment and heat pump systems contain a fluorinated greenhouse gas, R410A (GWP:2088), R32 (GWP:675), R407C (GWP:1774) or R134a (GWP:1430). *These GWP values are based on Regulation (EU) No 517/2014 from IPCC 4th edition. In case of Regulation (EU) No.626/2011 from IPCC 3rd edition, these are as follows: R410A (GWP:1975), R32 (GWP: 550), R407C (GWP:1650) or R134a (GWP:1300).



www.greengateway.mitsubishielectric.co.uk

Mitsubishi Electric UK's commitment to the environment

Follow us @meuk_Jes
Follow us @green_gateway

Mitsubishi Electric
Living Environmental Systems UK

[mitsubishielectric2](https://www.youtube.com/channel/UCm5b1h1h1h1h1h1h1h1h1h1)

thehub.mitsubishielectric.co.uk

Effective as of September 2017