

**K-CON**<sup>®</sup>

Lossnay Weatherproof Housing

# Installation Manual

Instructions for :-

KS4-KWH150 to fit Mitsubishi Electric Lossnay LGH-150RX5

KS4-KWH200 to fit Mitsubishi Electric Lossnay LGH-200RX5

For safe and correct use please read this installation manual and use in conjunction with the Lossnay installation manual supplied by Mitsubishi Electric.

## Contents

---



Page	
3	Safety precautions
4	Application and specifications
5	Exploded view
6 - 9	Installation instructions
10	Access to filter, core and electrical panel


## Safety precautions


### Before installation and electric work

Before installing the unit, make sure you read all the "Safety precautions". The "Safety precautions" provided are very important points regarding safety. Make sure you follow them.



Symbols used in the text

-  Warning: Describes precautions that should be observed to prevent danger of injury or death to the user.
-  Caution: Describes precautions that should be observed to prevent damage to the unit.

-  Warning: Carefully read the labels affixed to the main unit.

-  Warning:
  - Ask the dealer or an authorised technician to install the unit.  
Improper installation by the user may result in water leakage, electric shock, or fire.
  - Use the specified cables for wiring. Make the connections securely so that any outside forces acting on the cables are not applied to the terminals. Inadequate connection and fastening may generate heat and cause a fire.
  - Never repair the unit. If the controller must be repaired, consult the dealer.  
If the unit is repaired improperly, electric shock, or fire may result.
  - When handling this product, always wear protective equipment. EG: Gloves, full arm protection namely boiler suit, and safety glasses. Improper handling may result in injury.
  - Have all electric work done by a licensed electrician according to "Electric Facility Engineering Standard", "Interior Wire Regulations" and the instructions given in this manual and always use a special circuit.
  - If the power source capacity is inadequate or electric work is performed im-properly, electric shock and fire may result.

### Before installation


-  Caution:
  - Do not install the unit where combustible gas may leak. If the gas leaks and accumulates around the unit, an explosion may result.
-  Caution:
  - Ground the unit.  
Do not connect the ground wire to gas or water pipes, lightning rods, or telephone ground lines. Improper grounding may result in electric shock.
  - Be very careful regarding product transportation.  
Two people should be used to carry products of 20kg or more.
  - Some products use PP bands for packaging. Do not use any PP bands for a means of transportation.
  - Safely dispose of the packing materials.  
Packing materials, such as nails and other metal or wooden parts, may cause stabs or other injuries.

### Disclaimer

#### Warranty:

All products manufactured on behalf of Mitsubishi Electric UK are warranted against defective materials for a period of three years from the date of delivery to the original purchaser.

#### Warning:

-  Mitsubishi Electric UK assumes no liability for damages consequent to the user of this product. We reserve the right to change this manual at any time without notice. The information furnished by us is believed to be accurate and reliable. However, no responsibility is assumed by us for its use, nor for any infringements of patents or other rights of third parties

## Application

---

It is advised that where possible the Lossnay unit and housing should be installed in an area sheltered from the wind. Preferably the unit should be mounted on a suitable, level support so that the bottom of the air inlet grille is at least 300mm above floor level.

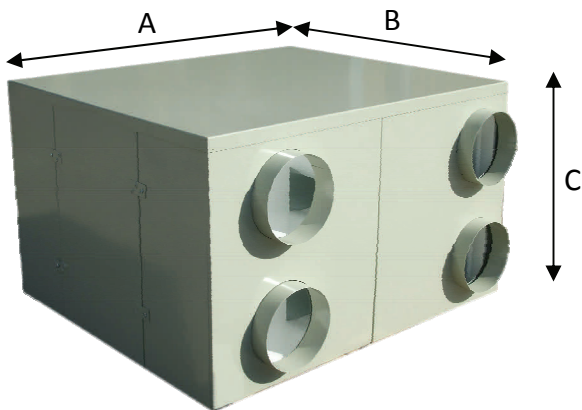
Ducting connected to the Supply Air and Return Air should be fully insulated to ensure maximum efficiency from the Lossnay Heat Exchanger.

Sufficient space should be allowed to enable access to the service access panel and the serviceable parts within.

## Specification

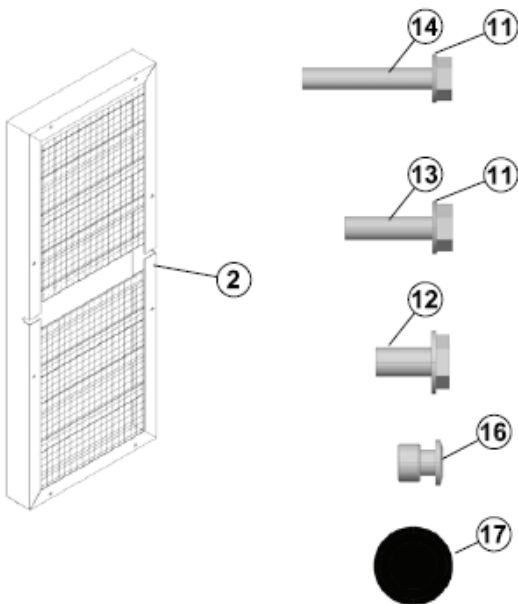
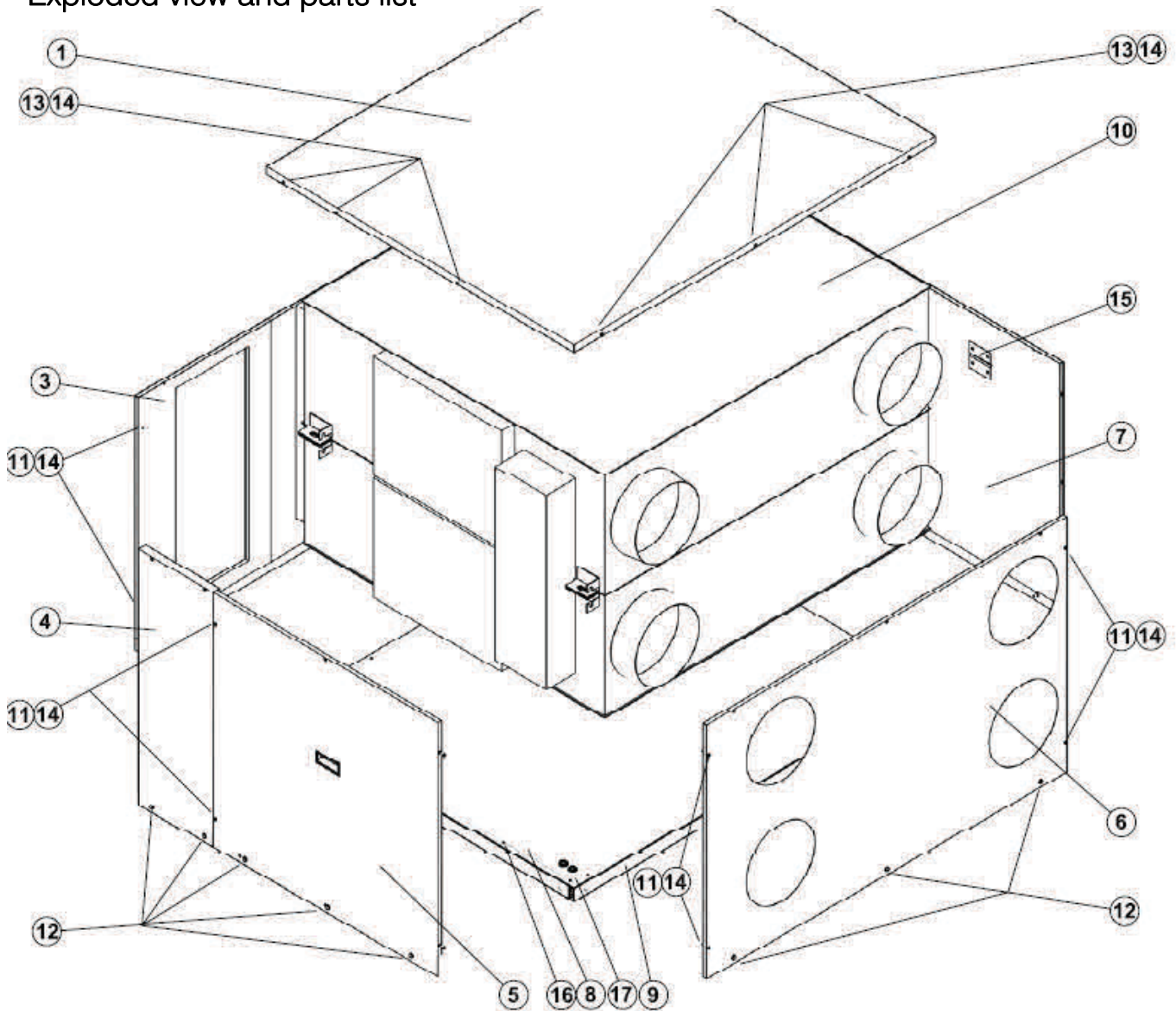
---

Model	Lossnay Unit	A (mm)	B (mm)	C (mm)	Weight kg	IP Rating
KS4-KWH 150	LGH 150RX5	1141	1164	847	51	IP43
KS4-KWH 200	LGH 200RX5	1367	1166	847	56	IP43



# Weatherproof Lossnay Housing - Assembly Instructions

## Exploded view and parts list



PART	DESCRIPTION	QTY
1	TOP COVER	1
2	LOUVRE	2
3	OUTDOOR EA/OA	1
4	FRONT	1
5	DOOR	1
6	INDOOR RA/SA	1
7	BACK	1
8	BASEPLATE	1
9	BASE ASSY	1
10	LGH200RX5	1 *
11	M4X25 SET SCREW BZP	10
12	M6X12	18
13	M4X16 SET SCREW BZP	12
14	M4 NYLON WASHER	22
15	BRACKET	2
16	3.2MMx10MM RIVET	18
17	20MM GROMMET	2

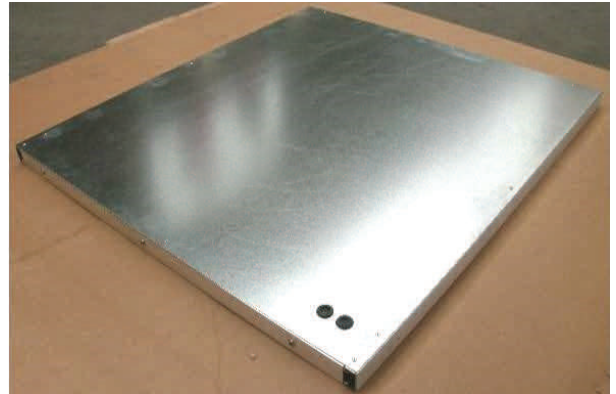
OA - Outside Air  
 EA - Exhaust Air  
 SA - Supply Air  
 RA - Return Air

**\*LOSSNAY UNIT SOLD SEPARATELY**

## Weatherproof Lossnay Housing - Assembly Instructions

- ① Carefully remove all housing parts from the packaging and place the base assembly consisting of parts ⑧ ⑨ ⑩ ⑪ on a flat surface.

This is particularly important when assembling the larger housings 150 / 200 to ensure that all panels and fixing holes line up correctly.



- ② Remove duct plenums from Lossnay unit and fit following Mitsubishi Electric instructions.



- ③ Place the Lossnay square on the base assembly with the electric box at the same side as the rubber grommets.





## Weatherproof Lossnay Housing - Assembly Instructions

- ④ Remove the outdoor flanges supplied with the Lossnay unit. These are not required for use with the weatherproof housing.



- ⑤ Only remove the transport / hanging brackets from the side of the Lossnay unit opposite from electrical access box.



- ⑥ Fit the outdoor grille louvres ② supplied with the weatherproof housing to the OA & EA side of the Lossnay.

Ensure that the louvres are installed in a downward direction to protect the unit from water ingress.



## Weatherproof Lossnay Housing - Assembly Instructions

- ⑧ Align the indoor panel ⑥ to the Lossnay unit and fit using 3 x M6 X 12 set screws ⑫ Repeat this procedure for fitting the OA and EA panel ③
- Correct fitting of these two panels is essential to enable easier installation of the back and front panel and the door panel.



- ⑨ Align the back panel ⑦ to the Lossnay unit and fit using 3 x M6 X 12 set screws ⑫



⑩



Fix the indoor ⑥ and outdoor ③ panels to the back panel using M4 X 25 set screws ⑪ and 4 nylon washers ⑭

⑪

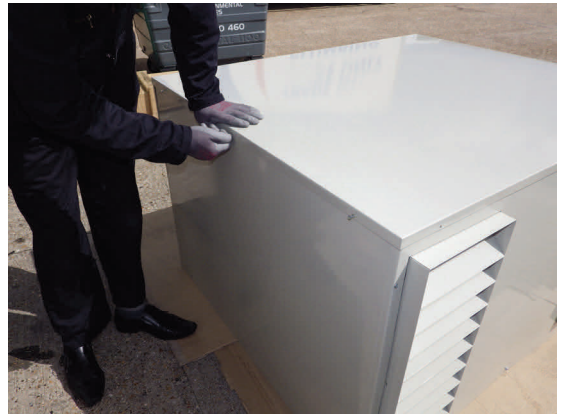


Offer up the front panel ④ to the Lossnay unit and fit using 2 x M6 X 12 set screws ⑫ at the base and 2 x M4 X 25 set screws ⑪ and 2 x nylon washers ⑭ to secure to the outdoor panel ③

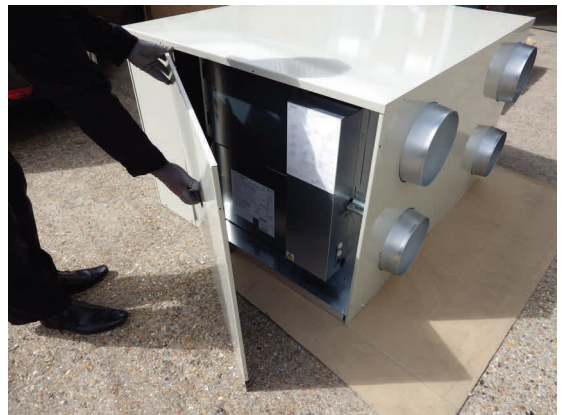


## Weatherproof Lossnay Housing - Assembly Instructions

- 12** Place the top cover **1** over the housing panels and fix using M4 X 16 set screws **13** and nylon washers **14**

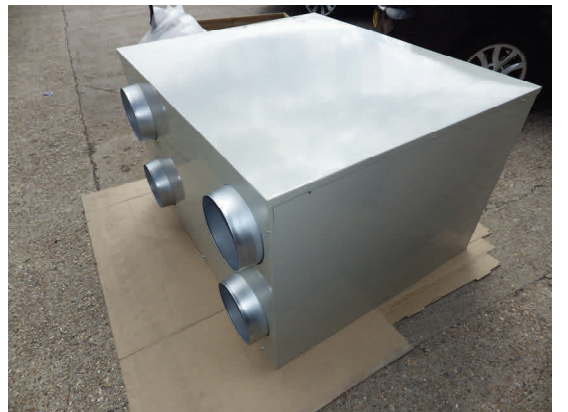


- 13** Slide the door panel **5** up under the top cover and fix using 3 x M6 X 12 set screws **12** at the base and 4 x M4 X 25 set screws **11** and 4 x nylon washers **14** at the sides. A single M4 X 16 set screw **13** fixes the door to the top cover.



- 14** The Lossnay and weatherproof housing is now complete for final installation.

It is advised that the Lossnay unit and housing should be securely mounted on a suitable support to minimise vibration and movement and to ensure that the bottom of the air inlet spigot is at least 300mm above floor level.



## Weatherproof Lossnay Housing - Assembly Instructions

---

### Access to filter, core and electrical panel

- ① To access the electrical panel remove the screws from around the door panel.  
Take care to support the panel by the handle to prevent it from dropping free.



- ② Slide the panel down and away to expose access to the Lossnay services.  
Care should be taken to protect the services area from moisture ingress.



---

Please be sure to put the contact address/telephone number  
on this manual before handing it to the customer.



**MITSUBISHI ELECTRIC UK**

MITSUBISHI ELECTRIC UK, TRAVELLERS LANE, HATFIELD, HERTFORDSHIRE, AL10 8XB