



SPLIT-TYPE, HEAT PUMP AIR CONDITIONERS

CE
2001

No. OC238

TECHNICAL & SERVICE MANUAL

Series PMH Ceiling Cassettes R407C

Indoor unit
[Model names]

PMH-P1.6BA

PMH-P2BA

[Service Ref.]

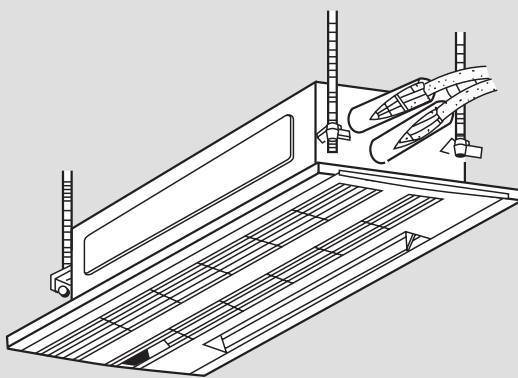
PMH-P1.6BA
PMH-P2BA

Refer to the OCT03 REVISED EDITION-C as regarding control relation.

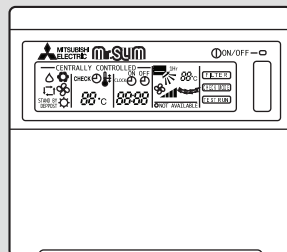
This manual does not cover the following outdoor units. When servicing them, please refer to the service manual No.OC180 REVISED EDITION-A and this manual in a set.

[Service Ref.]
<OC180 REVISED EDITION-A>

PUH-P1.6VGA
PUH-P1.6YGA
PUH-P2VGA
PUH-P2YGA



INDOOR UNIT



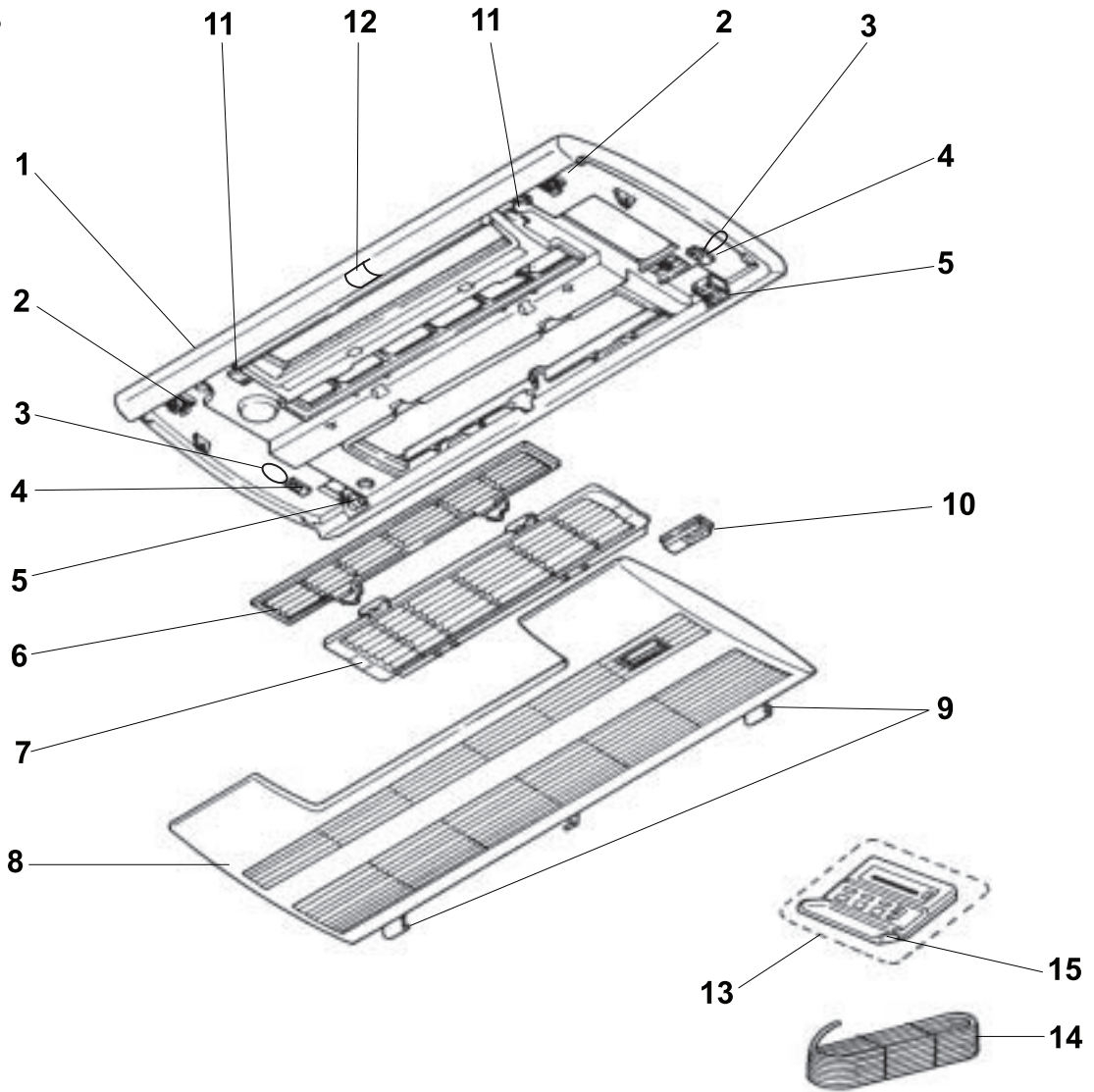
REMOTE CONTROLLER

CONTENTS

1. COMBINATION OF INDOOR AND OUTDOOR UNITS	2
2. SAFETY PRECAUTION	2
3. PART NAMES AND FUNCTIONS	4
4. SPECIFICATIONS	7
5. DATA	10
6. OUTLINES AND DIMENSIONS	19
7. WIRING DIAGRAM	20
8. REFRIGERANT SYSTEM DIAGRAM	21
9. TROUBLE SHOOTING	21
10. DISASSEMBLY PROCEDURE	23
11. PARTS LIST	26
12. OPTIONAL PARTS	29

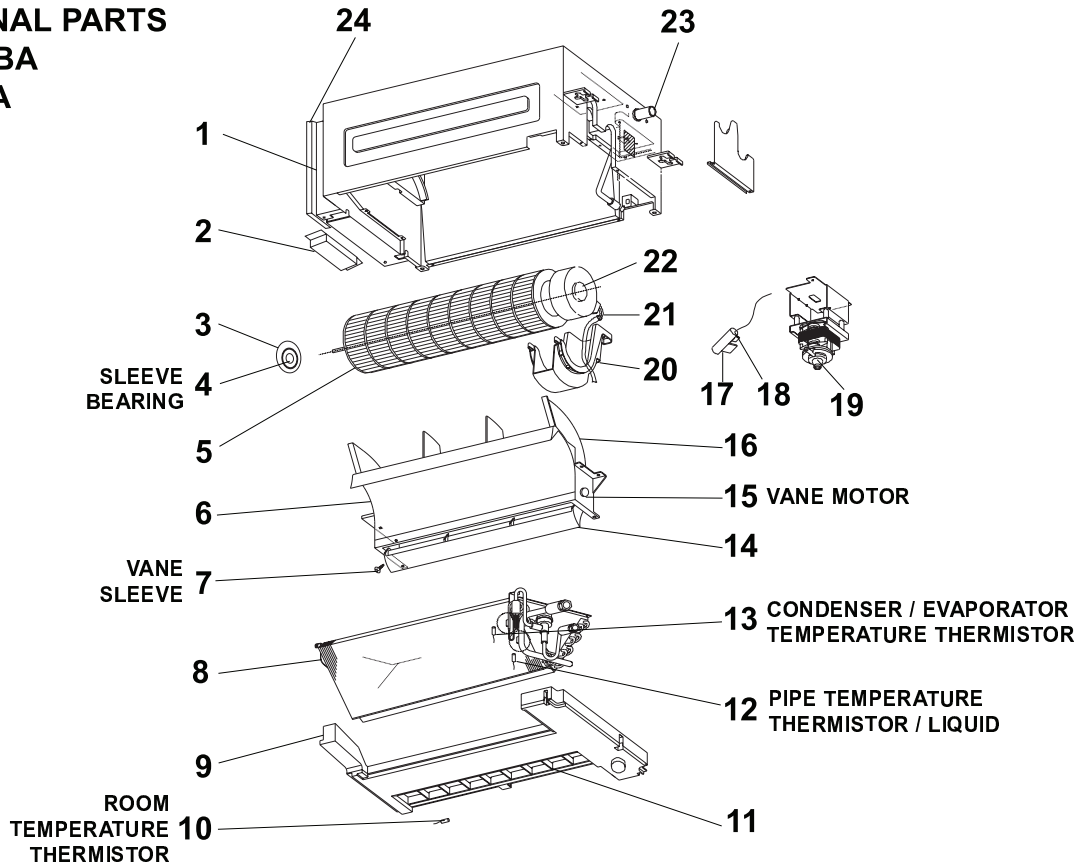
Mr. SLIM™

PANEL PARTS
PMH-P1.6BA
PMH-P2BA



No.	Part No.	Part Name	Specification	Q'ty/set	Remarks (Drawing No.)	Wiring Diagram Symbol	Recom- mended Q'ty	Price	
				PMH-P 1.6/2BA				Unit	Amount
1	T7W E11 003	AIR OUTLET GRILLE		1					
2	R01 E00 055	LATCH		2					
3	—	HANGER		2	(DT88D360H03)				
4	R01 E00 099	PANEL HOOK		2					
5	R01 E01 054	GRILLE CATCH		2					
6	R01 E01 500	LL.FILTER		1					
7	R01 E02 500	LL.FILTER		1					
8	TW7 E01 691	INTAKE GRILLE		1					
9	R01 E00 054	GRILLE CATCH		2					
10	R01 E00 648	RECEIVER COVER		1					
11	R01 E00 044	MAGNET		2					
12	R01 E00 096	SCREW CAP		1					
13	T7W E00 713	REMOTE CONTROLLER		1					
14	T7W A00 305	REMOTE CONTROLLER CABLE		1					
15	T7W E04 049	REMOTE CONTROLLER COVER		1					

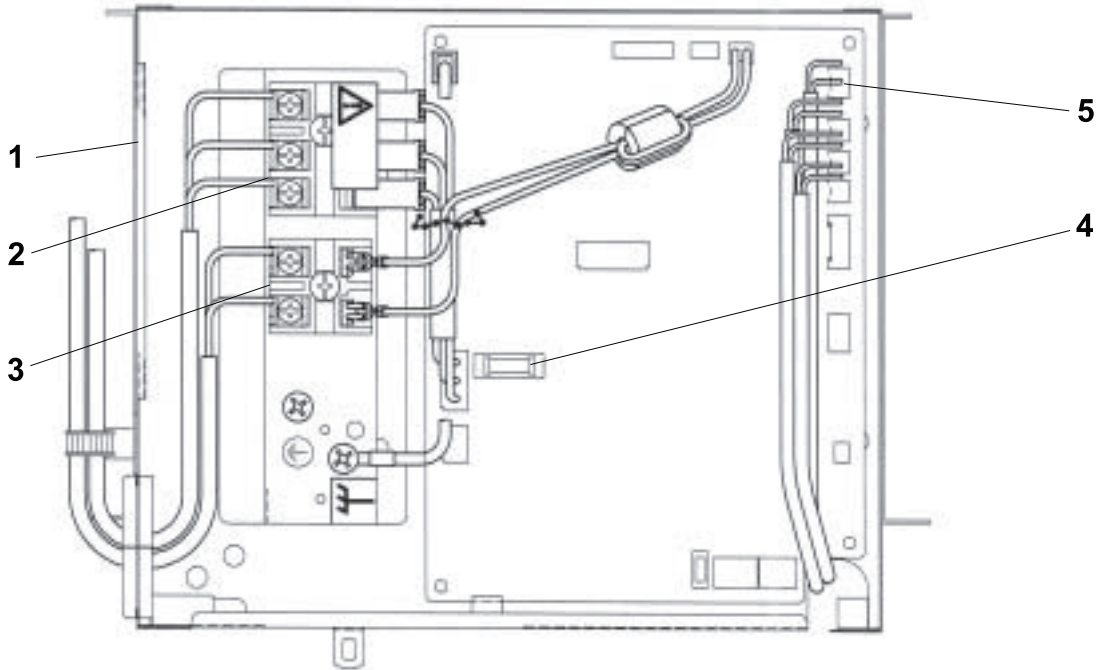
FUNCTIONAL PARTS
PMH-P1.6BA
PMH-P2BA



Part number that is circled is not shown in the figure.

No.	Part No.	Part Name	Specification	Q'ty/set		Remarks (Drawing No.)	Wiring Diagram Symbol	Recom- mended Q'ty	Price	
				PMH- P1.6	BA P2				Unit	Amount
1	—	CABINET		1	1	(DT00A478G64)				
2	—	COVER		1	1	(RG02L277H02)				
3	R01 22A 102	BEARING MOUNT		1	1					
4	R01 005 103	SLEEVE BEARING		1	1					
5	R01 E02 114	LINE FLOW FAN		1	1					
6	R01 E00 079	STABILIZER ASSY		1	1					
7	R01 E00 092	VANE SLEEVE		1	1					
8	T7W E70 480	HEAT EXCHANGER		1	1					
9	R01 E04 529	DRAIN PAN		1	1					
10	R01 E00 202	ROOM TEMPERATURE THERMISTOR		1	1		TH1			
11	R01 E00 038	GUIDE VANE		1	1					
12	R01 E41 202	PIPE TEMPERATURE THERMISTOR / LIQUID		1	1		TH2			
13	R01 E44 202	CONDENSER/ EVAPORATOR TEMPERATURE THERMISTOR		1	1		TH5			
14	R01 E01 002	VANE		1	1					
15	R01 E01 223	VANE MOTOR		1	1		MV			
16	R01 E00 110	CASING		1	1					
17	R01 31K 241	SENSOR HOLDER		1	1					
18	R01 E01 266	DRAIN SENSOR		1	1		DS			
19	T7W E02 355	DRAIN PUMP		1	1		DP			
20	R01 E00 130	MOTOR SUPPORT		1	1					
21	R01 E03 220	FAN MOTOR		1	1		MF			
22	R01 E01 105	MOTOR MOUNT		1	1					
23	R01 E00 527	DRAIN PIPE		1	1					
24	—	CONTROL BOX COVER		1	1	(RG00L311G06)				
25	R01 E01 673	SCREW ASSY		1	1					

ELECTRIC PARTS
PMH-P1.6BA
PMH-P2BA



No.	Part No.	Part Name	Specification	Q'ty/set	Remarks (Drawing No.)	Wiring Diagram Symbol	Recom- mended Q'ty	Price	
				PMH-P 1.6/2BA				Unit	Amount
1	—	CONTROL BOX		1	(RG02B337G08)				
2	T7W E01 716	TERMINAL BLOCK	3P (S1, S2, S3)	1	TB4				
3	T7W 515 716	TERMINAL BLOCK	2P (1, 2)	1	TB5				
4	T7W 520 239	FUSE	250V 6.3A	1	FUSE				
5	T7W E13 310	INDOOR CONTROLLER BOARD		1	I.B				

12-1. TIMER

Part No.	PAC-SC32PTA (with set back function)
Model Name	Program timer

12-1-1. Program timer specifications

Part name	Program timer
Parts No.	PAC-SC32PTA
Exterior dimensions (inch)	5-4/32X4-23/32X23/32 (130X120X18mm)
Installation	Wall mount
Type of clock	Quartz
Clock accuracy	±50 second / month at 25°C
Display-Time	Liquid crystal display
-Week	Liquid crystal display
-Timer setting unit	Liquid crystal display
Program cycle	24 hours
Timer setting unit	30 minutes
No. of set points	48 / day
Power rating	5V DC ±5% (Supplied by Remote Controller)

12-1-2. Feature of program timer

(1) Daily timer function

Daily timer can be set in 30 minutes units for up to 24 hours.
Each unit can be set for unit ON, unit OFF, or setback operation.

(2) Setback operation

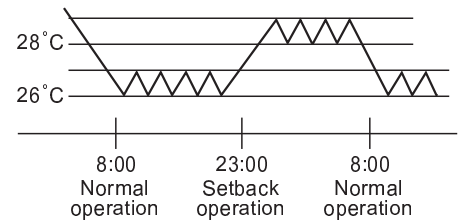
Set back operation is useful for reducing running costs
e.g. At a hotel with a 24-hour system

8:00~23:00 Cooling operation with set temperature at 26°C
23:00~8:00 Setback operation with 2 degrees of setback

As shown in the chart on the right, the set temperature rises 2 degrees automatically during the setback operation. When the setback operation ends, normal operation will begin.

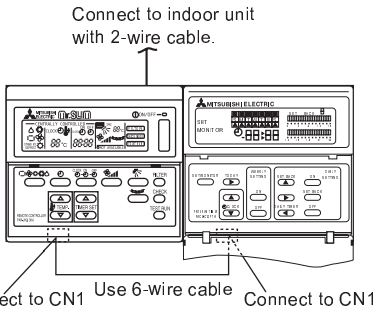
(3) Weekly timer function

Daily timer function can apply to each day of the week.



12-1-3. How to connect program timer

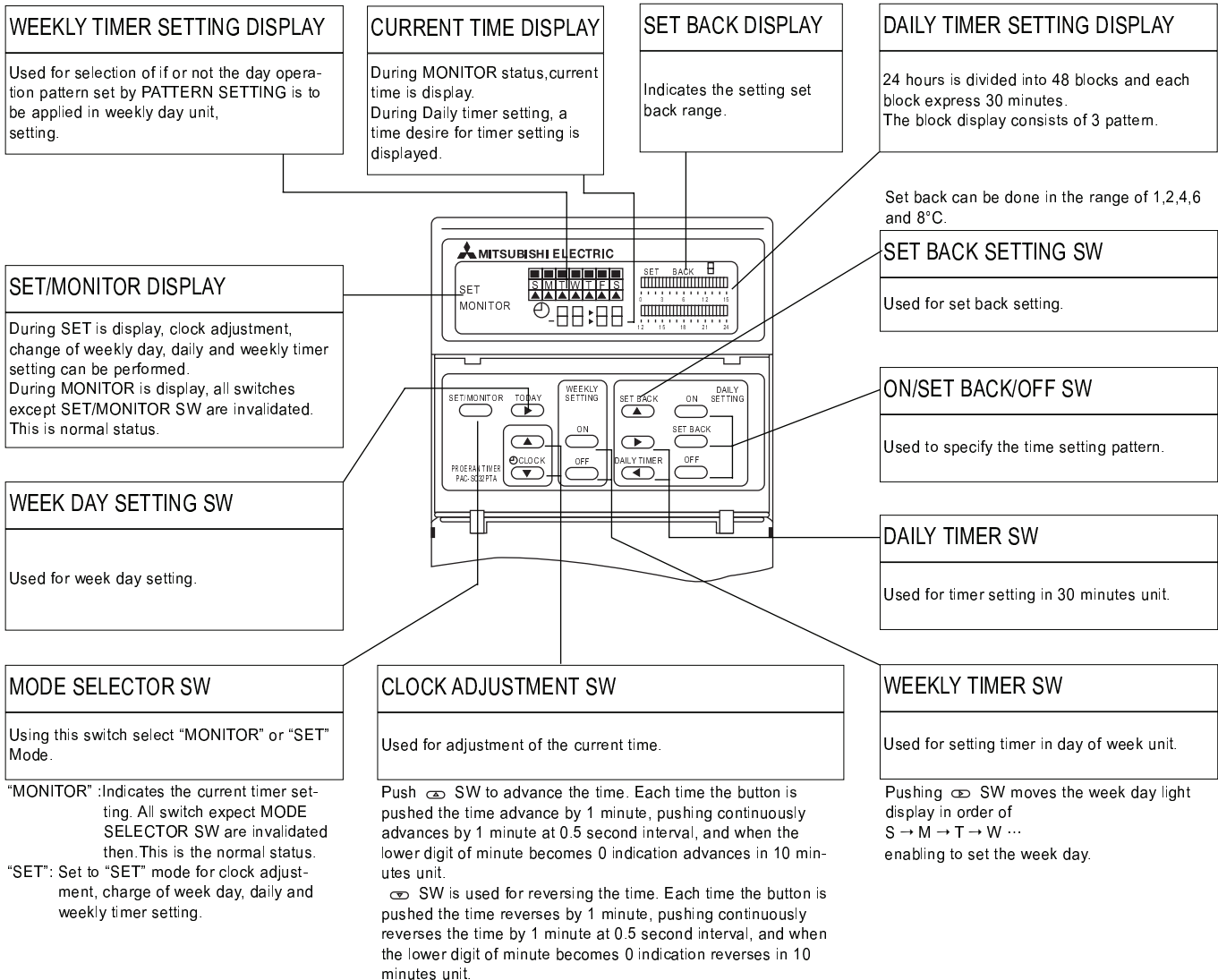
- (1) Install the program timer next to the remote controller the same way as the remote controller is installed.
- (2) Connect the program timer and the remote controller with a 6-wire cable as shown in the figure below



NOTE: While the program timer is connected to the remote controller, the 24hour ON/OFF timer on the remote controller will not operate.

12-1-4. Names and functions

<PAC-SC32PTA>





12-2. Remote Sensor

Part No.	PAC-SE41TS-E
Applied Service Ref.	PMH-P1.6/2BA

12-3. Remote Operation Adapter

Part No.	PAC-SF40RM-E
Applied Service Ref.	PMH-P1.6/2BA

12-4. Remote ON/OFF Adapter

Part No.	PAC-SE55RA-E
Applied Service Ref.	PMH-P1.6/2BA

Mr. SLIM™

 **mitsubishi electric corporation**
HEAD OFFICE : MITSUBISHI DENKI BLDG., 2-2-3, MARUNOUCHI, CHIYODA-KU, TOKYO 100-8310, JAPAN