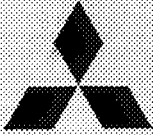


134194



**MITSUBISHI  
ELECTRIC**

SPLIT-TYPE, HEAT PUMP AIR CONDITIONERS

**2000**

# TECHNICAL & SERVICE MANUAL

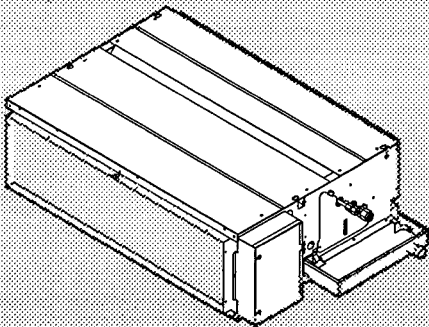
## Series PEHD Ceiling Concealed

<indoor unit> Service ref.

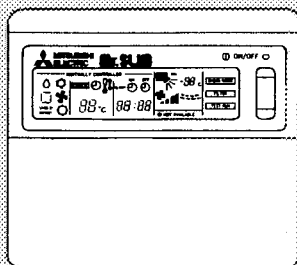
- Models PEHD-1.6EKA<sub>2</sub>.UK
- PEHD-1.6EKHA<sub>2</sub>.UK
- PEHD-2EKA<sub>2</sub>.UK
- PEHD-2EKHA<sub>2</sub>.UK
- PEHD-2.5EKA<sub>2</sub>.UK
- PEHD-2.5EKHA<sub>2</sub>.UK

This manual does not cover the following outdoor units. When servicing them, please refer to the service manual No.OC150A and this manual as a set.

- PUH-1.6VKA<sub>3</sub>.UK
- PUH-2VKA<sub>2</sub>.UK
- PUH-2.5VKA<sub>2</sub>.UK



INDOOR UNIT



REMOTE CONTROLLER

### CONTENTS

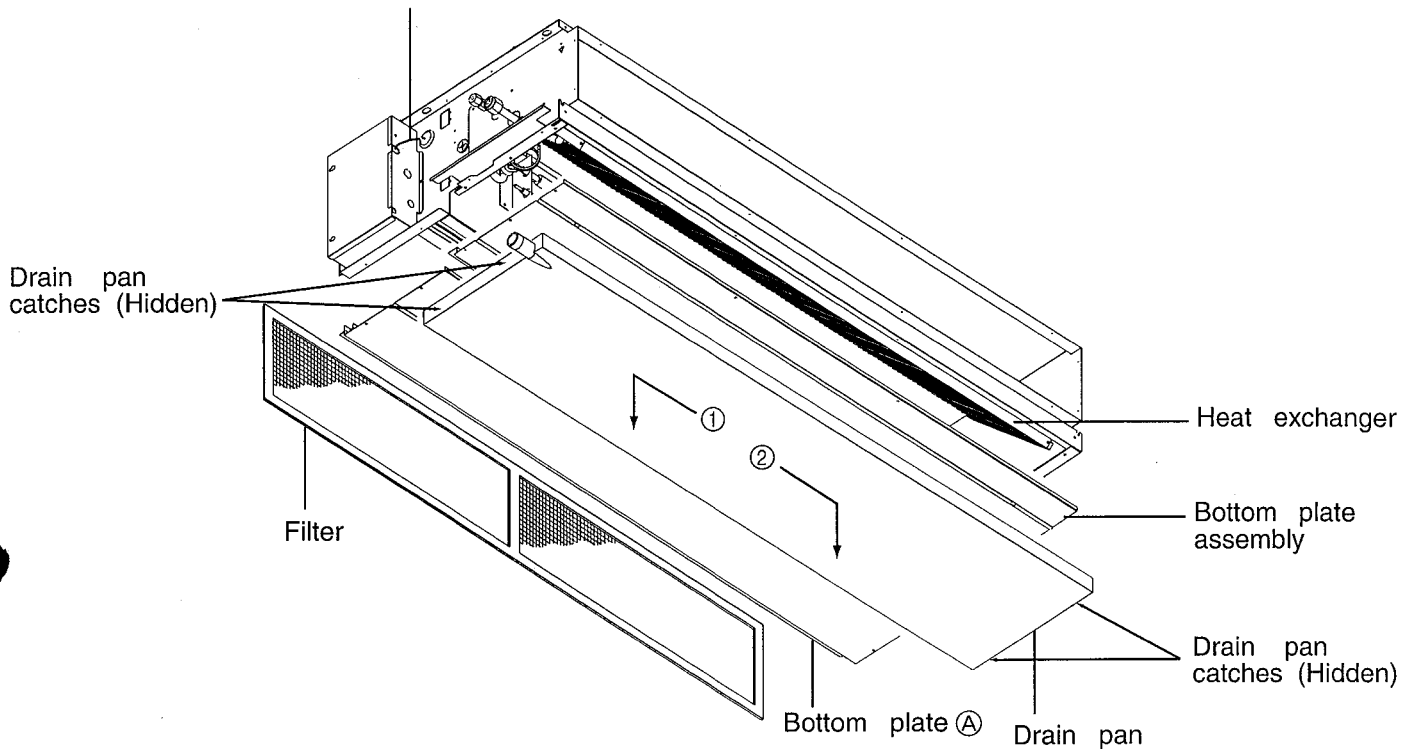
1. FEATURES .....	1
2. PART NAMES AND FUNCTIONS .....	2
3. SPECIFICATIONS .....	5
4. DATA .....	8
5. REFRIGERANT SYSTEM DIAGRAM .....	13
6. OUTLINES AND DIMENSIONS .....	14
7. WIRING DIAGRAM .....	15
8. DISASSEMBLY INSTRUCTIONS .....	16
9. PARTS LIST .....	19
10. OPTIONAL PARTS .....	23

The Slim Line.  
From Mitsubishi Electric



Figure1.

Disconnect the fan motor connector  
(and the booster heater connector)

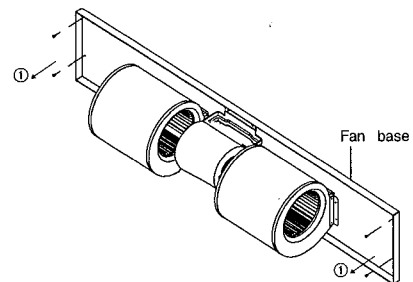


### I. Removing the fan motor

1. Removing the 9 screws that fix the bottom plate  $\text{\textcircled{A}}$ , and remove it.
2. Removing the drain pan as follows:
  - (1) Remove the screw that fixes the drain pan.
  - (2) Slide the drain pan in the direction ①, Figure1 and unhook the drain pan catch near the drain pipe.
  - (3) Slide the drain pan in the direction ②, Figure1 and unhook the 2 catches on the other side of the drain pipe.
3. Remove the 8 screws that fix the bottom plate assembly, and remove it.
4. Disconnect the fan motor connector from the controller box.  
(For the models with booster heater, disconnect the booster heater connector as well.)

5. Remove the fan plate as follow:

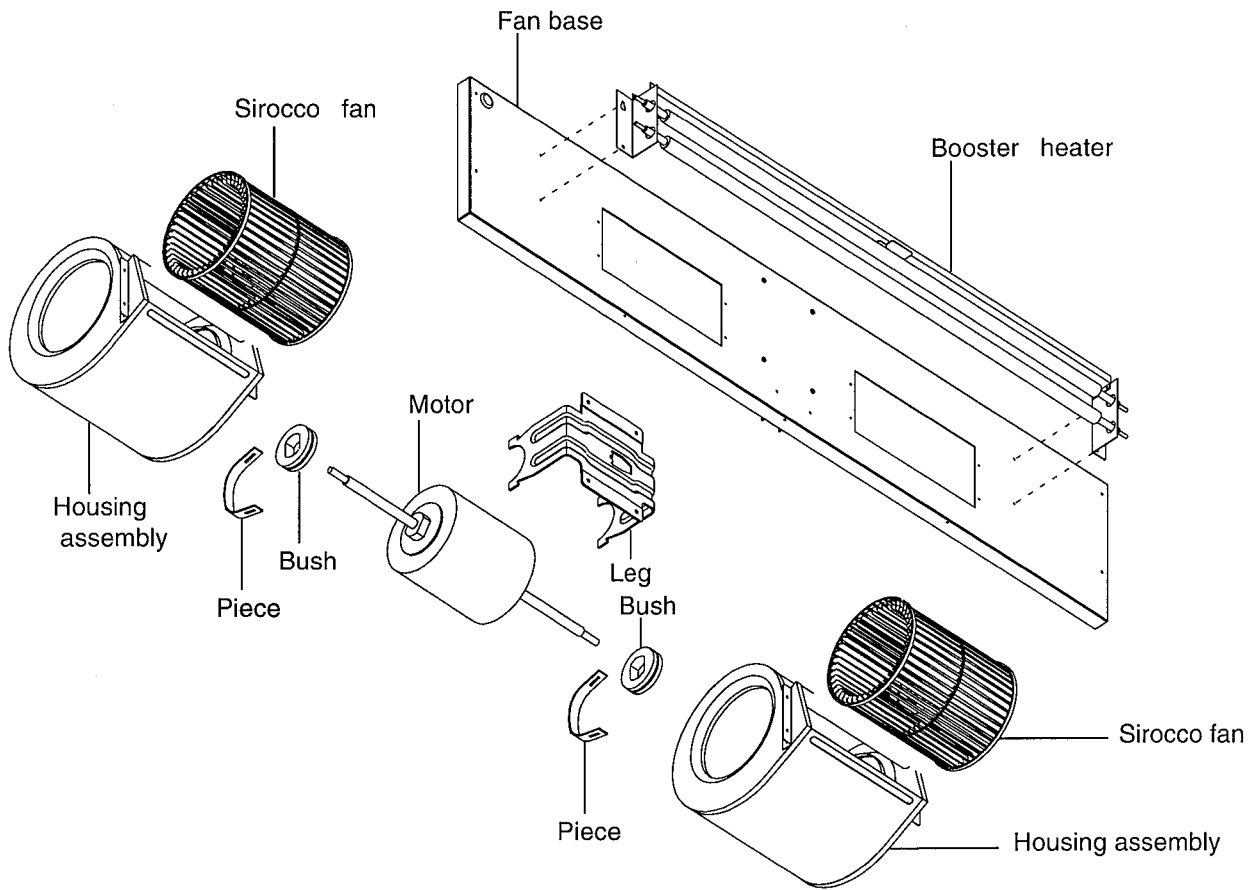
Figure2.



- (1) Remove the 4 screws ①
- (2) Slide down the fan plate to remove.

6. Remove the sirocco fan setting screw and the motor fixture setting screw to remove the motor fixture.  
Remove the other motor fixture as well, and then remove the fan motor.

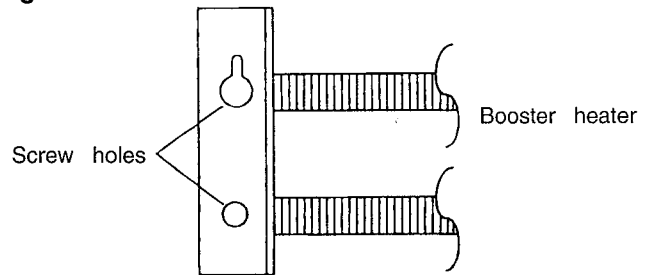
Figure3.

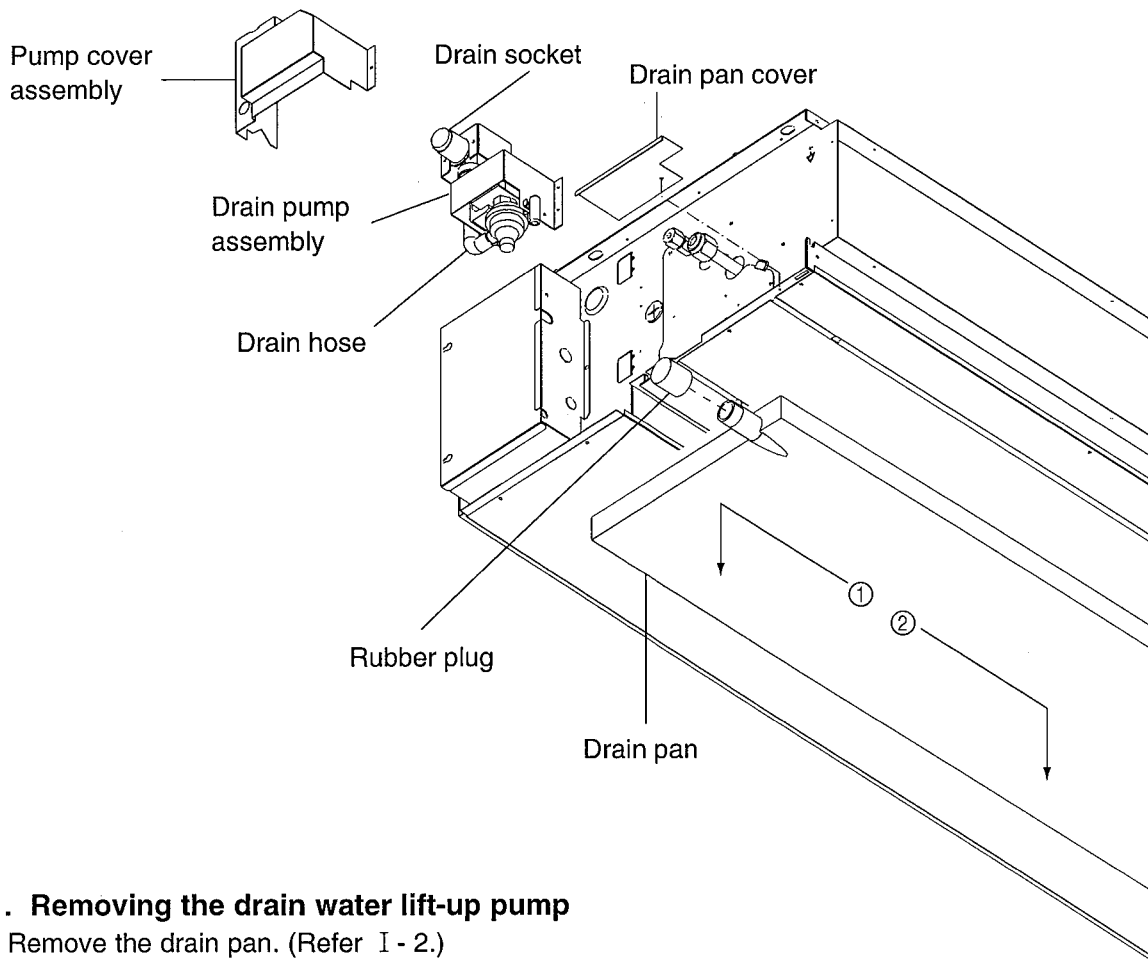


## II. Removing the booster heater

1. Remove the bottom plate, drain pan, and bottom plate assembly. (Refer I -1~3.)
2. Disconnect the booster heater connector from the controller box.
3. Remove the 2 lower screws on the both sides of the booster heater.
4. Loosen the 2 upper screws on the both sides of the booster heater.
5. Removing the booster heater.

Figure4.





### III. Removing the drain water lift-up pump

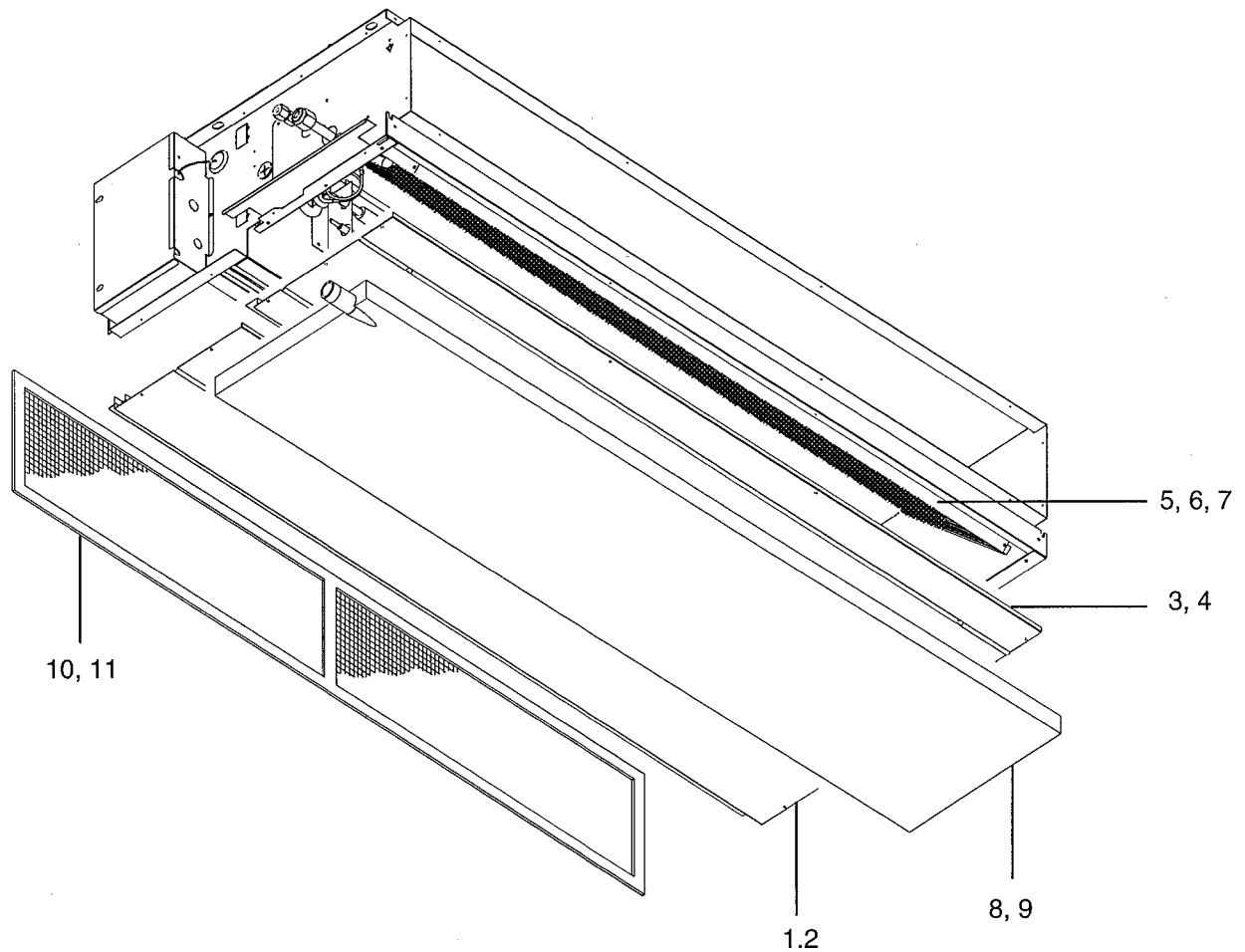
1. Remove the drain pan. (Refer I - 2.)
2. Disconnect the drain pump connector and drain sensor connector from the controller box.
3. Remove the two screws of the pump cover assembly.
4. Remove the drain hose from drain socket.
5. Remove the three screws of the drain pump assembly.
6. Remove the earth screw and four nuts of the drain pump assembly.
7. Remove the drain pump from drain pump assembly.

PEHD-1.6EKA2.UK, PEHD-1.6EKHA2.UK

PEHD-2EKA2.UK, PEHD-2EKHA2.UK

PEHD-2.5EKA2.UK, PEHD-2.5EKHA2.UK

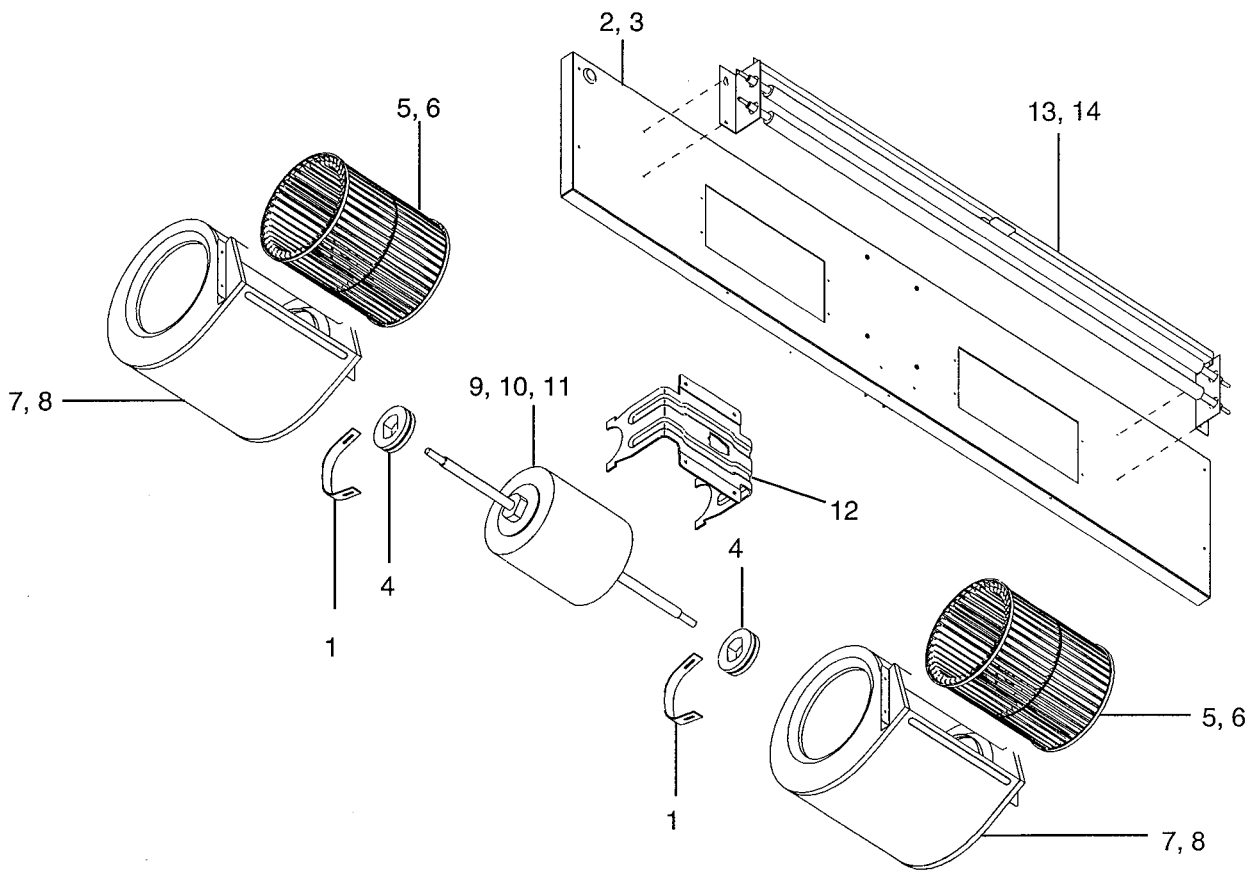
EXTERNAL PARTS



No.	Part No.	Part Name	Drawing No.	Qt'y/set						Spec.
				PEHD-1.6EKA <sub>2</sub>	PEHD-1.6EKHA <sub>2</sub>	PEHD-2EKA <sub>2</sub>	PEHD-2EKHA <sub>2</sub>	PEHD-2.5EKA <sub>2</sub>	PEHD-2.5EKHA <sub>2</sub>	
1		Bottom plate 1	W638939Z03	1	1	1	1			
2		Bottom plate 1	W638917Z03					1	1	
3		Bottom plate 2 ass'y	W638940G02	1	1	1	1			
4		Bottom plate 2 ass'y	W638918G02					1	1	
5		H.EX.General ass'y	W268511G01	1	1					
6		H.EX.General ass'y	W268511G02			1	1			
7		H.EX.General ass'y	W268511G03					1	1	
8		Drain pan ass'y	W638942G01	1	1	1	1			
9		Drain pan ass'y	W638920G01					1	1	
10		Filter	W638181G01	1	1	1	1			
11		Filter	W638181G02					1	1	

PEHD-1.6EKA2.UK, PEHD-1.6EKHA2.UK  
 PEHD-2EKA2.UK, PEHD-2EKHA2.UK  
 PEHD-2.5EKA2.UK, PEHD-2.5EKHA2.UK

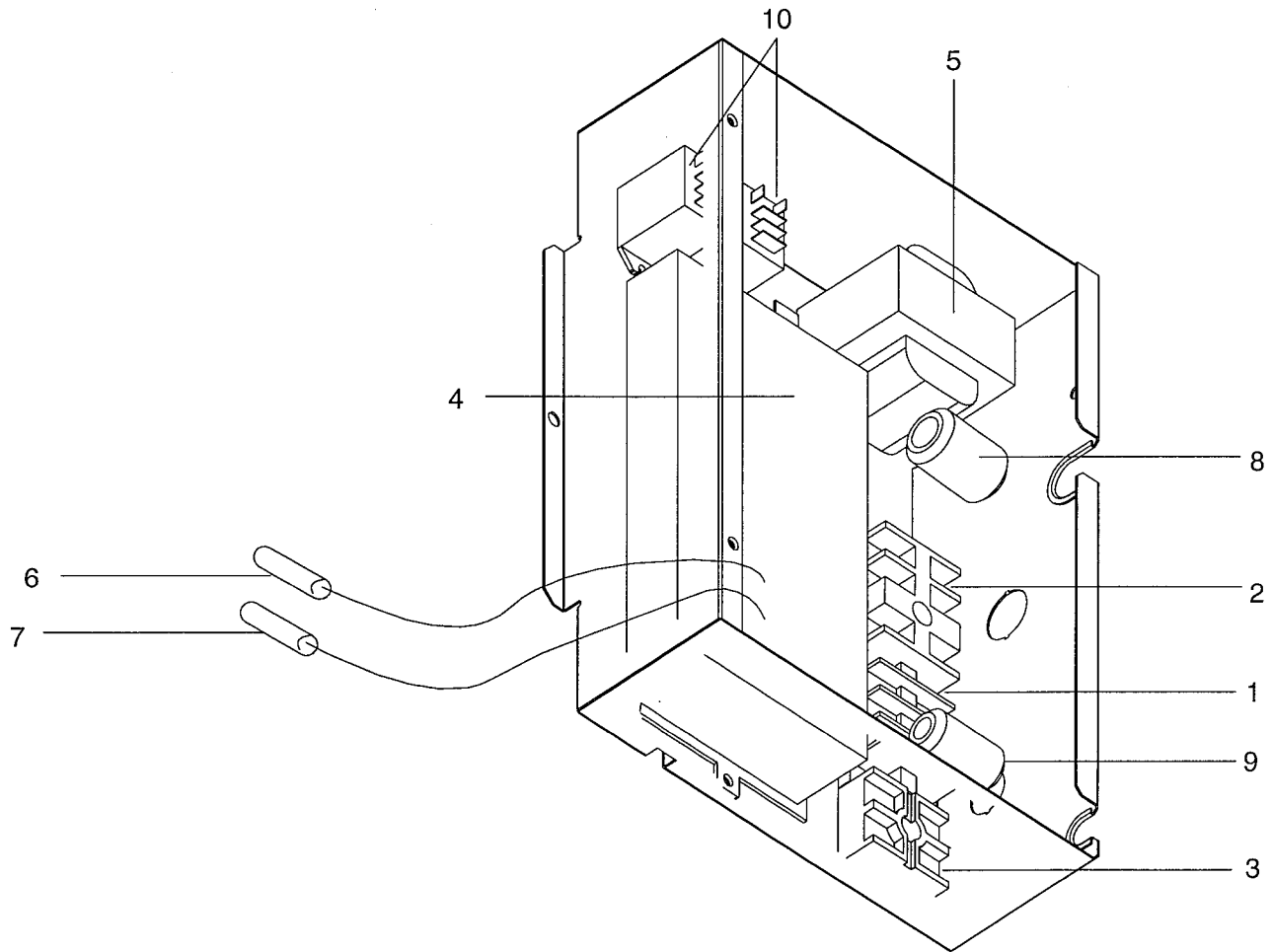
**BLOWER PARTS**



No.	Part No.	Part Name	Drawing No.	Qt'y/set							
				PEHD-1.6EKA <sub>2</sub>	PEHD-1.6EKHA <sub>2</sub>	PEHD-2EKA <sub>2</sub>	PEHD-2EKHA <sub>2</sub>	PEHD-2.5EKA <sub>2</sub>	PEHD-2.5EKHA <sub>2</sub>		
1		Attachment	W353715H01	2	2	2	2	2	2		
2		Fan base ass'y	W638932G02	1	1	1	1				
3		Fan base ass'y	W638905G02					1	1		
4		Bush	W818836H01	2	2	2	2	2	2		
5		Sirocco fan	W122296G01	2	2	2	2				
6		Sirocco fan	W122297G01					2	2		
7		Housing ass'y	W638949G03	2	2	2	2				
8		Housing ass'y	W638949G04					2	2		
9		Motor	P714315X02	1	1						<MF>
10		Motor	P714316X02			1	1				<MF>
11	520/502	Motor	P714774X01					1	1		<MF>
12		Motor support	W241060H03	1	1	1	1	1	1		
13		Heater ass'y 3	P493639X02		1		1				
14		Heater ass'y 4	P493640X02						1		

PEHD-1.6EKA2.UK, PEHD-1.6EKHA2.UK  
 PEHD-2EKA2.UK, PEHD-2EKHA2.UK  
 PEHD-2.5EKA2.UK, PEHD-2.5EKHA2.UK

CONTROL BOX PARTS



No.	Part No.	Part Name	Drawing No.	Qt'y/set						Spec.
				PEHD-1.6EKA <sub>2</sub>	PEHD-1.6EKHA <sub>2</sub>	PEHD-2EKA <sub>2</sub>	PEHD-2EKHA <sub>2</sub>	PEHD-2.5EKA <sub>2</sub>	PEHD-2.5EKHA <sub>2</sub>	
1		Terminalbed	P436109X01	1	1	1	1	1	1	< TB4 >
2		Terminalbed	P436110X01	1	1	1	1	1	1	< TB2 >
3		Terminalbed	BA73S950H02	1	1	1	1	1	1	< TB5 >
4		Controller	RG00C006G02	1	1	1	1	1	1	< I.B >
5		Transformer work DWG.	W855468G06	1	1	1	1	1	1	< T >
6		Thermistor S	BG71V163H03	1	1	1	1	1	1	< RT1 >
7		Thermistor H	BG71V164H08	1	1	1	1	1	1	< RT2 >
8		Ferrite core	P419114X01	1	1	1	1	1	1	
9		Ferrite core	P419115X01	1	1	1	1	1	1	
10		Start relay	P421221X01		2		2		2	LY1F< 88H1,2 >

