

SPLIT-TYPE, HEAT PUMP AIR CONDITIONERS  
SPLIT-TYPE, AIR CONDITIONERS

No.OC261  
REVISED EDITION-D

# TECHNICAL & SERVICE MANUAL

## R407C

Outdoor unit

[model names]

PUH-P1VGAA

PUH-P1.6VGAA PU-P1.6VGAA

PUH-P1.6YGAA PU-P1.6YGAA

PUH-P2VGAA PU-P2VGAA

PUH-P2YGAA PU-P2YGAA

PUH-P2.5VGAA PU-P2.5VGAA

PUH-P2.5YGAA PU-P2.5YGAA

PUH-P3VGAA PU-P3VGAA

PUH-P3YGAA PU-P3YGAA

PUH-P4VGAA PU-P4VGAA

PUH-P4YGAA PU-P4YGAA

PUH-P5YGAA PU-P5YGAA

PUH-P6YGAA PU-P6YGAA

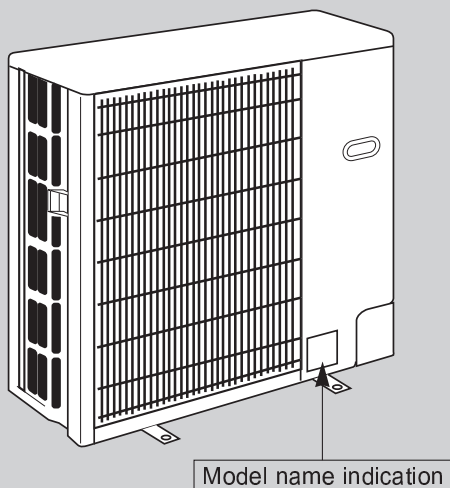
[Service Ref.]

Service Ref. is on page 2.

Revision:

"13. PARTS LIST" has been modified.

• Please void OC261 REVISED EDITION-C.



## CONTENTS

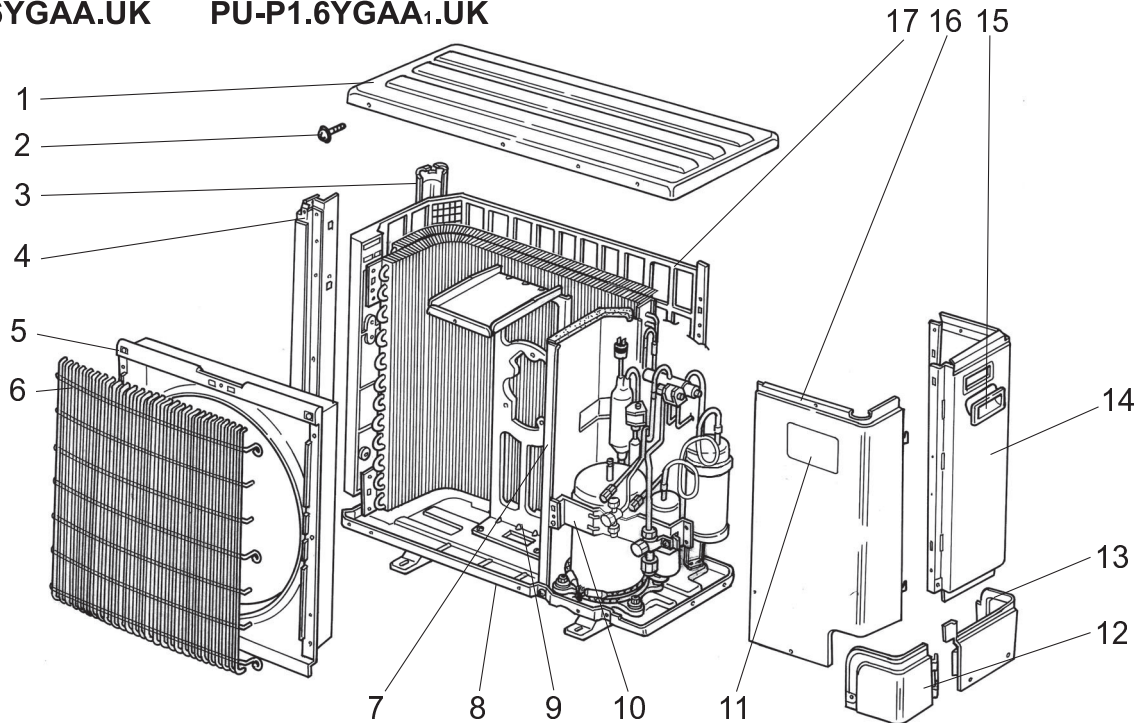
1. TECHNICAL CHANGES .....	3
2. SAFETY PRECAUTION .....	4
3. COMBINATION OF INDOOR AND OUTDOOR UNITS .....	6
4. PART NAMES AND FUNCTIONS .....	7
5. SPECIFICATIONS .....	8
6. DATA .....	17
7. OUTLINES AND DIMENSIONS .....	20
8. WIRING DIAGRAM .....	24
9. WIRING SPECIFICATIONS .....	30
10. REFRIGERANT SYSTEM DIAGRAM .....	31
11. TROUBLESHOOTING .....	35
12. DISASSEMBLY PROCEDURE .....	49
13. PARTS LIST .....	53
14. OPTIONAL PARTS .....	Back Cover

# 13

# PARTS LIST

## STRUCTURAL PARTS

PUH-P1VGAA.UK      PUH-P1VGAA<sub>1</sub>.UK  
 PUH-P1.6VGAA.UK      PUH-P1.6VGAA<sub>1</sub>.UK  
 PUH-P1.6YGAA.UK      PUH-P1.6YGAA<sub>1</sub>.UK  
 PU-P1.6VGAA.UK      PU-P1.6VGAA<sub>1</sub>.UK  
 PU-P1.6YGAA.UK      PU-P1.6YGAA<sub>1</sub>.UK



No.	Part No.	Part Name	Specification	Q'ty/set					Remarks (Drawing No.)	Wiring Diagram Symbol	Recom- mended Q'ty	Price	
				PUH-P1 .UK	PUH-P1.6 .UK	PU-P1.6 .UK	VGAA VGAA <sub>1</sub>	YGAA YGAA <sub>1</sub>				Unit	Amount
				VGAA VGAA <sub>1</sub>	YGAA YGAA <sub>1</sub>	YGAA YGAA <sub>1</sub>	VGAA VGAA <sub>1</sub>	YGAA YGAA <sub>1</sub>					
1	S70 30L 641	TOP PANEL		1	1	1	1	1					
2	—	F.ST SCREW	(5X15)	16	16	16	16	16	(DG12F536H15)				
3	S70 30L 613	REAR SUPPORT		1	1	1	1	1					
4	S70 23T 614	FRONT SUPPORT		1	1	1	1	1					
5	S70 30L 119	BELL MOUTH		1	1	1	1	1					
6	S70 E01 675	WIRE GRILL - S		1	1	1	1	1					
7	—	SEPARATOR ASSY		1	1	1	1	1	(RG00R045G01)				
8	S70 E01 686	BASE		1	1	1	1	1					
9	S70 96W 130	MOTOR SUPPORT		1	1	1	1	1					
10	—	VALVE BED ASSY		1	1	1	1	1	(RG00R048G01)				
11	S70 001 699	LABEL (MITSUBISHI)		1	1	1	1	1					
12	S70 31L 658	COVER PANEL 1		1	1	1	1	1					
13	S70 30L 658	COVER PANEL 2		1	1	1	1	1					
14	S70 E00 682	REAR PANEL		1	1	1	1	1					
15	S70 30L 655	PANEL HANDLE		1	1	1	1	1					
16	S70 E09 661	SERVICE PANEL		1	1								
	S70 E08 661	SERVICE PANEL				1							
	S70 E01 661	SERVICE PANEL					1						
	S70 E05 661	SERVICE PANEL						1					
17	S70 30L 698	REAR GUARD		1	1	1	1	1					

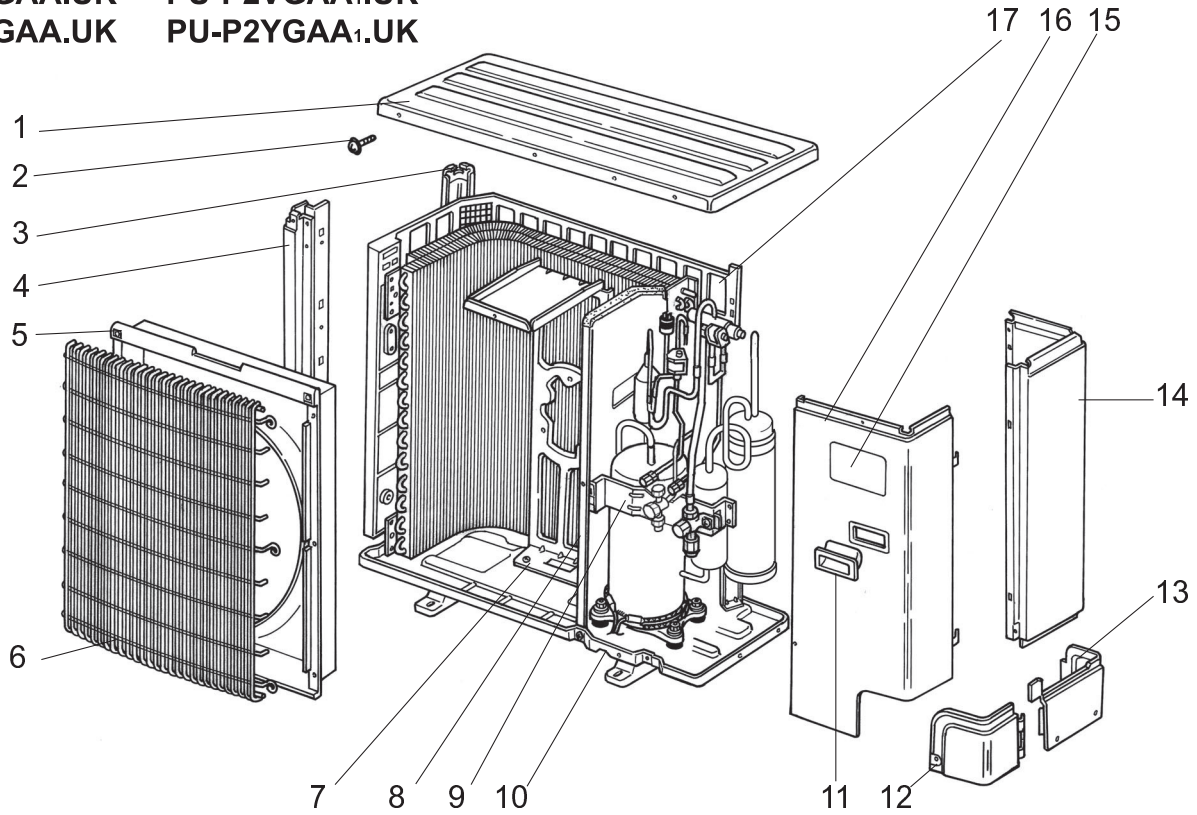
## STRUCTURAL PARTS

PUH-P2VGAA.UK PUH-P2VGAA<sub>1</sub>.UK

PUH-P2YGAA.UK PUH-P2YGAA<sub>1</sub>.UK

PU-P2VGAA.UK PU-P2VGAA<sub>1</sub>.UK

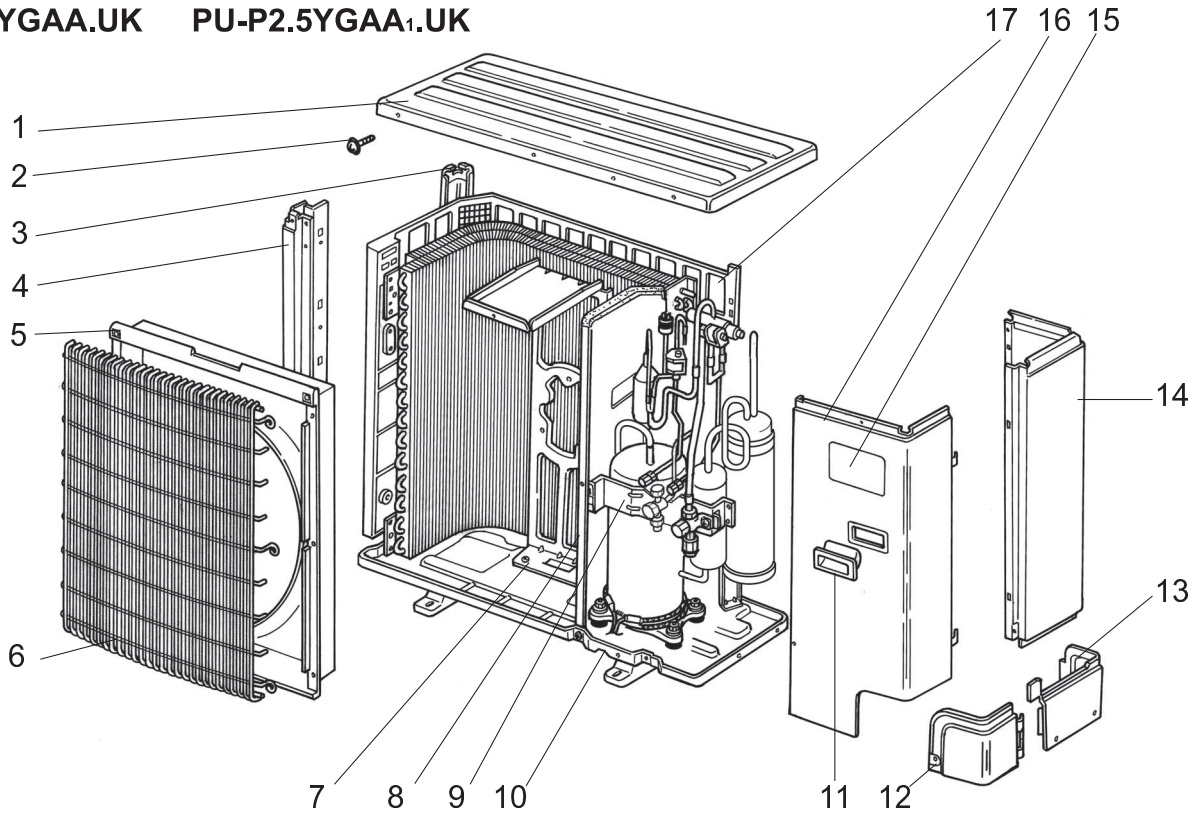
PU-P2YGAA.UK PU-P2YGAA<sub>1</sub>.UK



No.	Part No.	Part Name	Specificatio	Q'ty/set				Remarks (Drawing No.)	Wiring Diagram Symbol	Recom- mended Q'ty	Price	
				PUH-P2 VGAA <sub>1</sub>	.UK YGAA <sub>1</sub>	PU-P2 VGAA <sub>1</sub>	.UK YGAA <sub>1</sub>				Unit	Amount
1	S70 30L 641	TOP PANEL		1	1	1	1					
2	—	F.ST SCREW	(5X15)	16	16	16	16	(DG12F536H15)				
3	S70 97W 613	REAR SUPPORT		1	1	1	1					
4	S70 E00 614	FRONT SUPPORT		1	1	1	1					
5	S70 36L 119	BELL MOUTH		1	1	1	1					
6	S70 E02 675	WIRE GRILL-M		1	1	1	1					
7	S70 97W 130	MOTOR SUPPORT		1	1	1	1					
8	—	SEPARATOR ASSY		1	1	1	1	(RG00R045G02)				
9	—	VALVE BED ASSY		1	1	1	1	(RG00R048G02)				
10	S70 E02 686	BASE		1	1	1	1					
11	S70 30L 655	PANEL HANDLE		2	2	2	2					
12	S70 31L 658	COVER PANEL-1		1	1	1	1					
13	S70 30L 658	COVER PANEL-2		1	1	1	1					
14	S70 E01 682	REAR PANEL		1	1	1	1					
15	S70 001 699	LABEL (MITSUBISHI)		1	1	1	1					
16	S70 E10 661	SERVICE PANEL		1								
	S70 E11 661	SERVICE PANEL			1							
	S70 E02 661	SERVICE PANEL				1						
	S70 E06 661	SERVICE PANEL					1					
17	S70 31L 698	REAR GUARD		1	1	1	1					

**STRUCTURAL PARTS**

PUH-P2.5VGAA.UK    PUH-P2.5VGAA<sub>1</sub>.UK  
 PUH-P2.5YGAA.UK    PUH-P2.5YGAA<sub>1</sub>.UK  
 PU-P2.5VGAA.UK    PU-P2.5VGAA<sub>1</sub>.UK  
 PU-P2.5YGAA.UK    PU-P2.5YGAA<sub>1</sub>.UK



No.	Part No.	Part Name	Specificatio	Q'ty/set				Remarks (Drawing No.)	Wiring Diagram Symbol	Recom- mended Q'ty	Price	
				PUH-P2.5 VGAA	YGAA	PU-P2.5 VGAA <sub>1</sub>	YGAA <sub>1</sub>				Unit	Amount
1	S70 30L 641	TOP PANEL		1	1	1	1					
2	—	F.ST SCREW	(5X15)	16	16	16	16	(DG12F536H15)				
3	S70 97W 613	REAR SUPPORT		1	1	1	1					
4	S70 E00 614	FRONT SUPPORT		1	1	1	1					
5	S70 36L 119	BELL MOUTH		1	1	1	1					
6	S70 E02 675	WIRE GRILL-M		1	1	1	1					
7	S70 97W 130	MOTOR SUPPORT		1	1	1	1					
8	—	SEPARATOR ASSY		1	1	1	1	(RG00R045G02)				
9	—	VALVE BED ASSY		1	1	1	1	(RG00R048G02)				
10	S70 E02 686	BASE		1	1	1	1					
11	S70 30L 655	PANEL HANDLE		2	2	2	2					
12	S70 31L 658	COVER PANEL-1		1	1	1	1					
13	S70 30L 658	COVER PANEL-2		1	1	1	1					
14	S70 E01 682	REAR PANEL		1	1	1	1					
15	S70 001 699	LABEL (MITSUBISHI)		1	1	1	1					
16	S70 E10 661	SERVICE PANEL		1								
	S70 E11 661	SERVICE PANEL			1							
	S70 E02 661	SERVICE PANEL				1						
	S70 E06 661	SERVICE PANEL					1					
17	S70 30L 698	REAR GUARD		1	1	1	1					

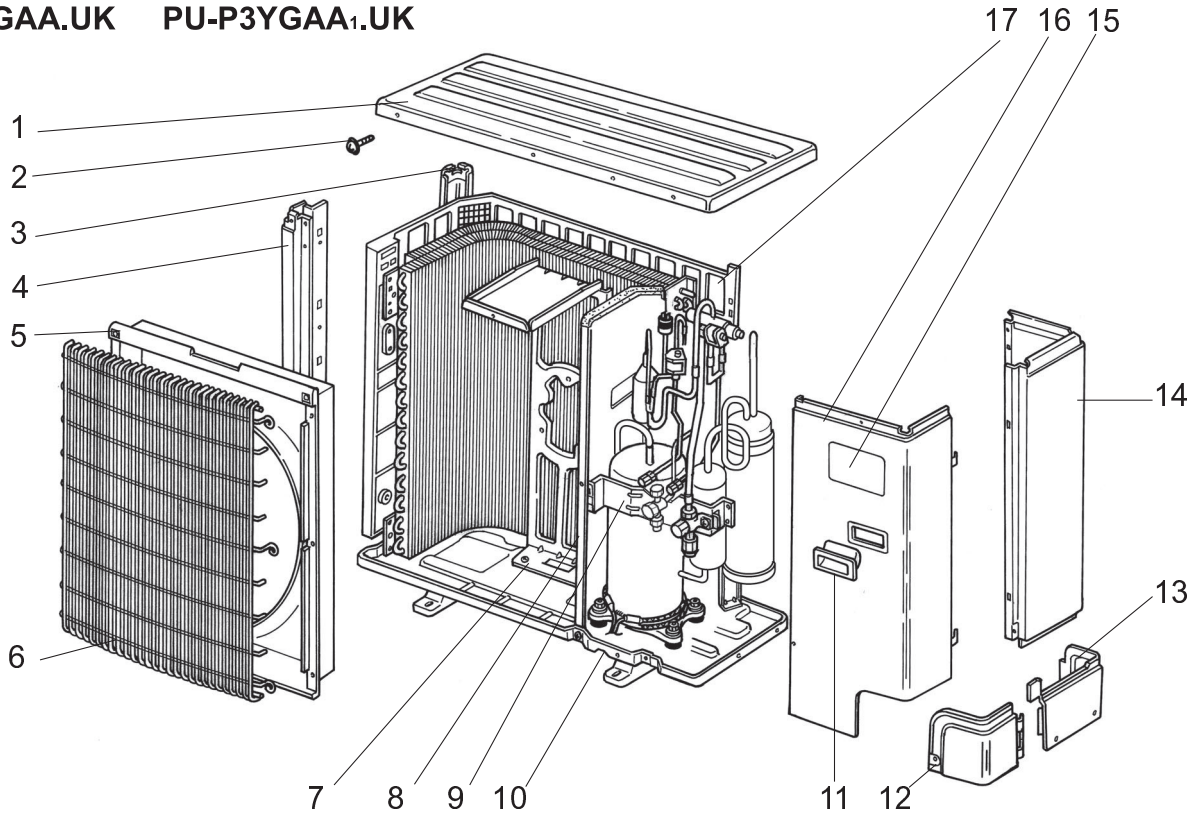
## STRUCTURAL PARTS

PUH-P3VGAA.UK PUH-P3VGAA<sub>1</sub>.UK

PUH-P3YGAA.UK PUH-P3YGAA<sub>1</sub>.UK

PU-P3VGAA.UK PU-P3VGAA<sub>1</sub>.UK

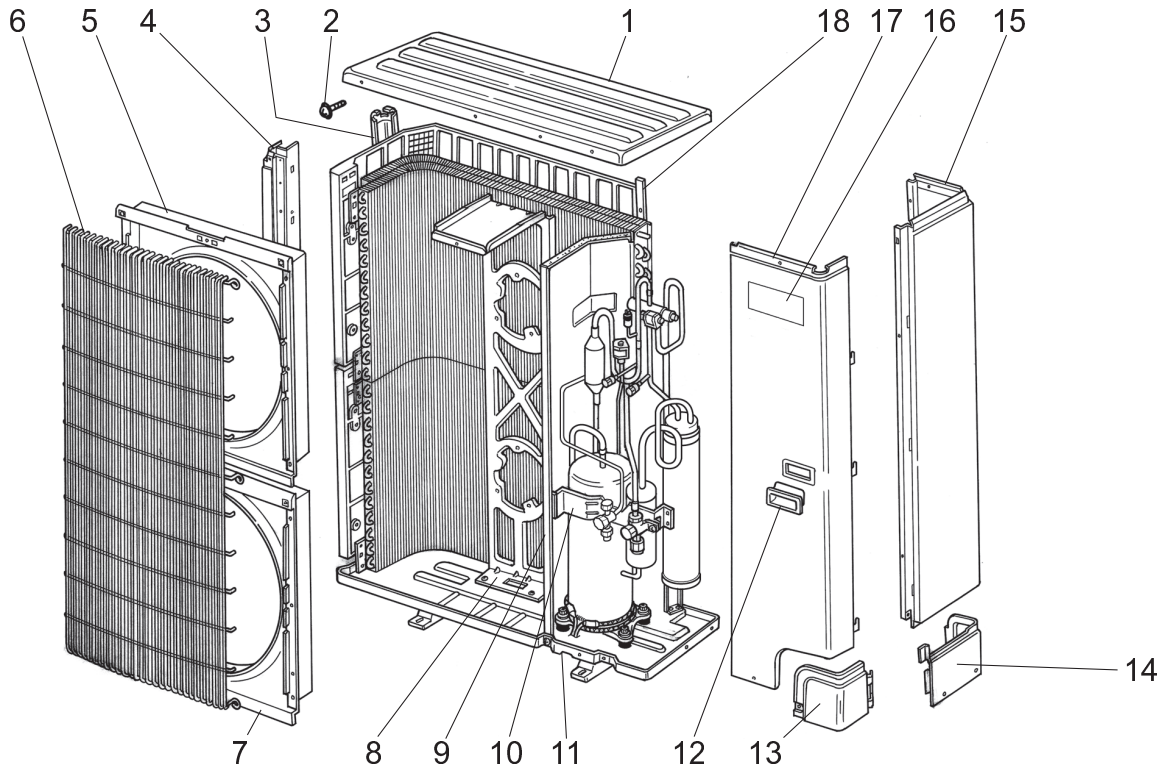
PU-P3YGAA.UK PU-P3YGAA<sub>1</sub>.UK



No.	Part No.	Part Name	Specificatio	Q'ty/set				Remarks (Drawing No.)	Wiring Diagram Symbol	Recom- mended Q'ty	Price	
				PUH-P3 VGAA <sub>1</sub>	.UK YGAA <sub>1</sub>	PU-P3 VGAA <sub>1</sub>	.UK YGAA <sub>1</sub>				Unit	Amount
1	S70 30L 641	TOP PANEL		1	1	1	1					
2	—	F.ST SCREW	(5X15)	16	16	16	16	(DG12F536H15)				
3	S70 97W 613	REAR SUPPORT		1	1	1	1					
4	S70 E00 614	FRONT SUPPORT		1	1	1	1					
5	S70 36L 119	BELL MOUTH		1	1	1	1					
6	S70 E02 675	WIRE GRILL-M		1	1	1	1					
7	S70 97W 130	MOTOR SUPPORT		1	1	1	1					
8	—	SEPARATOR ASSY		1	1	1	1	(RG00R045G03)				
9	—	VALVE BED ASSY		1	1	1	1	(RG00R048G02)				
10	S70 E02 686	BASE		1	1	1	1					
11	S70 30L 655	PANEL HANDLE		2	2	2	2					
12	S70 31L 658	COVER PANEL-1		1	1	1	1					
13	S70 30L 658	COVER PANEL-2		1	1	1	1					
14	S70 E02 682	REAR PANEL		1	1	1	1					
15	S70 001 699	LABEL (MITSUBISHI)		1	1	1	1					
16	S70 E10 661	SERVICE PANEL		1								
	S70 E11 661	SERVICE PANEL			1							
	S70 E02 661	SERVICE PANEL				1						
	S70 E06 661	SERVICE PANEL					1					
17	S70 30L 698	REAR GUARD		1	1	1	1					

**STRUCTURAL PARTS**

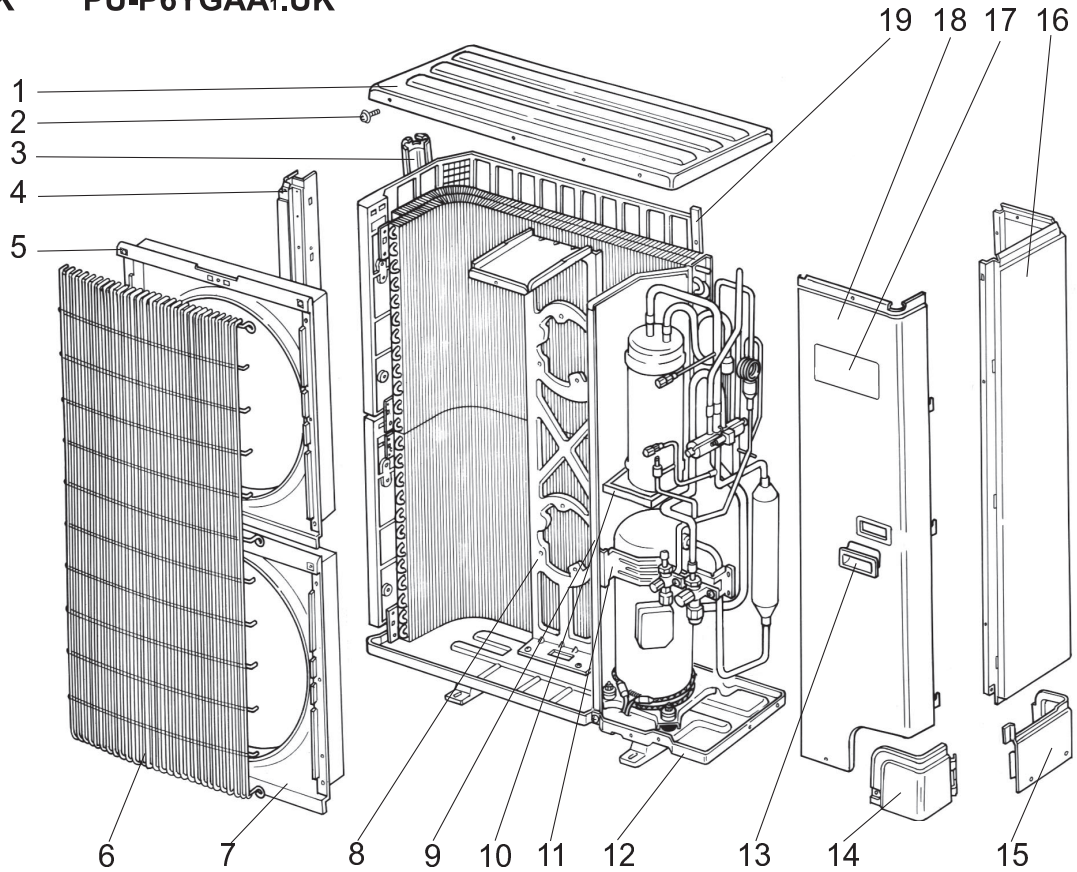
PUH-P4VGAA.UK PUH-P4VGAA<sub>1</sub>.UK PU-P4VGAA.UK PU-P4VGAA<sub>1</sub>.UK  
 PUH-P4YGAA.UK PUH-P4YGAA<sub>1</sub>.UK PU-P4YGAA.UK PU-P4YGAA<sub>1</sub>.UK



No.	Part No.	Part Name	Specification	Q'ty/set				Remarks (Drawing No.)	Wiring Diagram Symbol	Recom- mended Q'ty	Price	
				PUH-P4 VGAA	.UK YGAA	PU-P4 VGAA	.UK YGAA				Unit	Amount
1	S70 30L 641	TOP PANEL		1	1	1	1					
2	—	F.ST SCREW	(5X15)	18	18	18	18	(DG12F536H15)				
3	S70 98W 613	REAR SUPPORT		1	1	1	1					
4	S70 E01 614	FRONT SUPPORT		1	1	1	1					
5	S70 41L 119	BELL MOUTH		1	1	1	1					
6	S70 E03 675	WIRE GRILL - L		1	1	1	1					
7	S70 30L 119	BELL MOUTH		1	1	1	1					
8	S70 42L 130	MOTOR SUPPORT		1	1	1	1					
9	—	SEPARATOR ASSY		1	1	1	1	(RG00R045G04)				
10	—	VALVE BED ASSY		1	1	1	1	(RG00R048G02)				
11	S70 E03 686	BASE		1	1	1	1					
12	S70 30L 655	PANEL HANDLE		2	2	2	2					
13	S70 31L 658	COVER PANEL-1		1	1	1	1					
14	S70 30L 658	COVER PANEL-2		1	1	1	1					
15	S70 E03 682	REAR PANEL		1	1	1	1					
16	S70 001 699	LABEL (MITSUBISHI)		1	1	1	1					
17	S70 E12 661	SERVICE PANEL		1								
	S70 E13 661	SERVICE PANEL			1							
	S70 E03 661	SERVICE PANEL				1						
	S70 E07 661	SERVICE PANEL					1					
18	S70 30L 698	REAR GUARD		2	2	2	2					

## STRUCTURAL PARTS

PUH-P5YGAA.UK    PUH-P5YGAA<sub>1</sub>.UK  
 PUH-P6YGAA.UK    PUH-P6YGAA<sub>1</sub>.UK  
 PU-P5YGAA.UK    PU-P5YGAA<sub>1</sub>.UK  
 PU-P6YGAA.UK    PU-P6YGAA<sub>1</sub>.UK



No.	Part No.	Part Name	Specification	Q'ty/set		Remarks (Drawing No.)	Wiring Diagram Symbol	Recom- mended Q'ty	Price	
				PUH-P5,6 YGAA.UK YGAA <sub>1</sub> .UK	PU-P5,6 YGAA.UK YGAA <sub>1</sub> .UK				Unit	Amount
1	S70 17T 641	TOP PANEL		1	1					
2	—	F.ST SCREW	(5X15)	18	18	(DG12F536H15)				
3	S70 98W 613	REAR SUPPORT		1	1					
4	S70 17T 614	FRONT SUPPORT		1	1					
5	S70 41L 119	BELL MOUTH		1	1					
6	S70 E03 675	WIRE GRILL - L		1	1					
7	S70 30L 119	BELL MOUTH		1	1					
8	S70 42L 130	MOTOR SUPPORT		1	1					
9	—	SEPARATOR ASSY		1	1	(RG00R046G01)				
10	S70 A04 529	ACCUMULATOR DRAIN PAN		1	1					
11	—	VALVE BED ASSY		1	1	(RG00R048G03)				
12	S70 E04 686	BASE		1	1					
13	S70 30L 655	PANEL HANDLE		2	2					
14	S70 31L 658	COVER PANEL-1		1	1					
15	S70 30L 658	COVER PANEL-2		1	1					
16	S70 E04 682	REAR PANEL		1	1					
17	S70 001 699	LABEL(MITSUBISHI)		1	1					
18	S70 E14 661	SERVICE PANEL		1						
	S70 E04 661	SERVICE PANEL			1					
19	S70 17T 698	REAR GUARD		2	2					

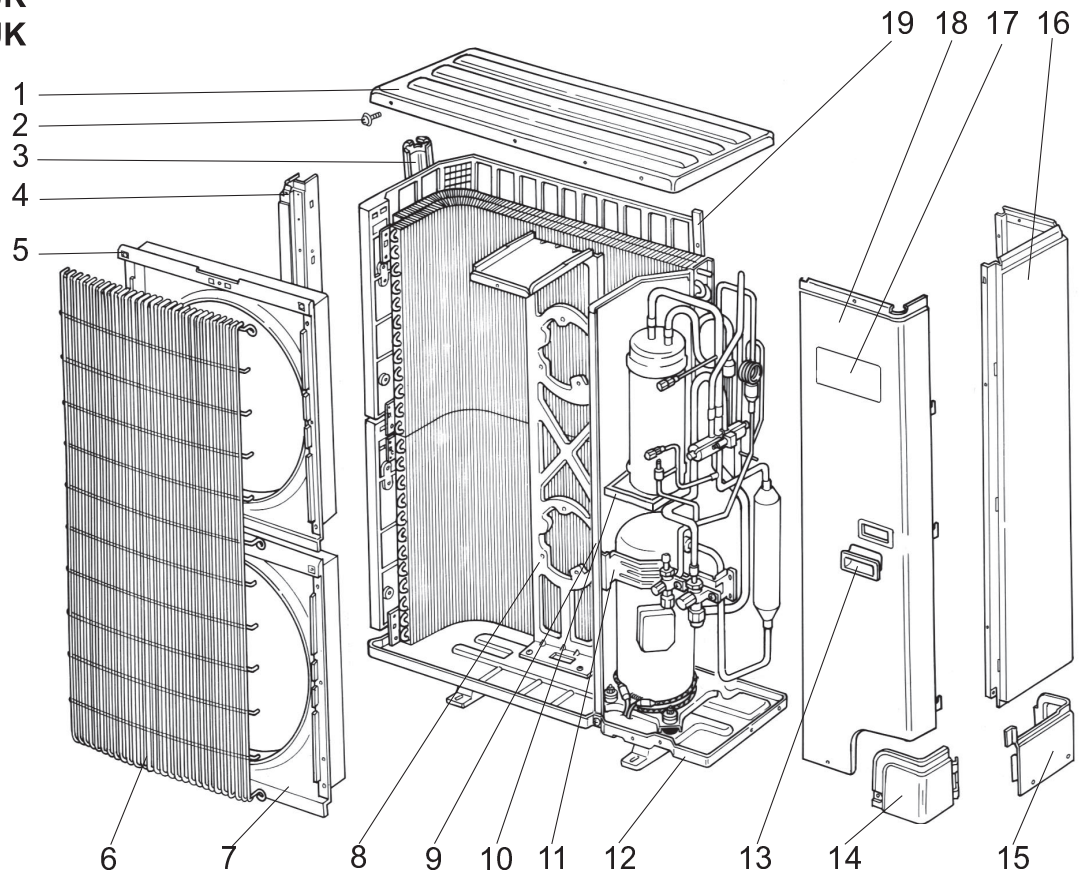
## STRUCTURAL PARTS

PUH-P5YGAA<sub>2</sub>.UK

PUH-P6YGAA<sub>2</sub>.UK

PU-P5YGAA<sub>2</sub>.UK

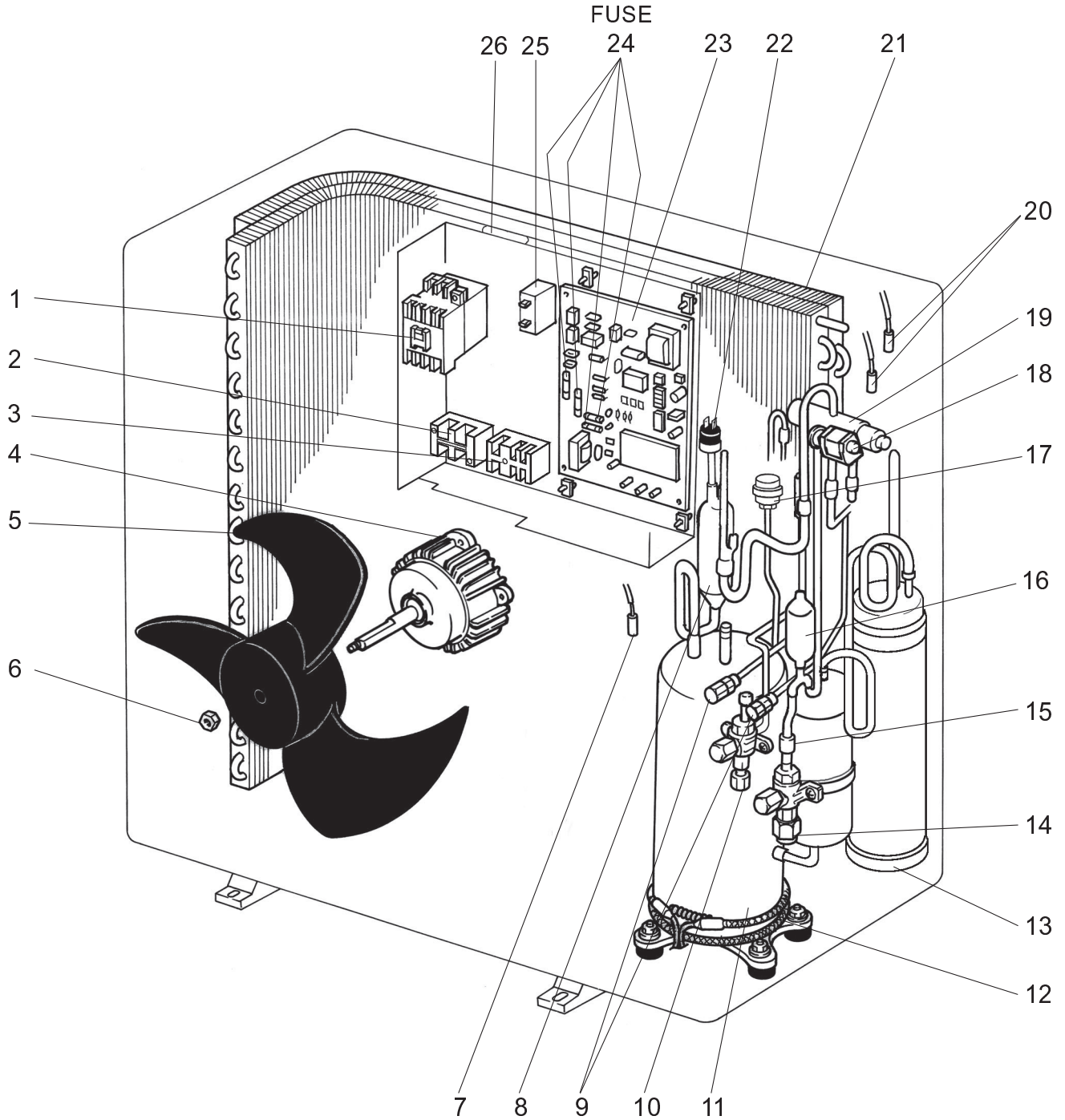
PU-P6YGAA<sub>2</sub>.UK



No.	Part No.	Part Name	Specification	Q'ty/set		Remarks (Drawing No.)	Wiring Diagram Symbol	Recom- mended Q'ty	Price	
				PUH-P5,6 YGAA <sub>2</sub> .UK	PU-P5,6 YGAA <sub>2</sub> .UK				Unit	Amount
1	S70 17T 641	TOP PANEL		1	1					
2	S71 000 051	F.ST SCREW	(5X15)	18	18					
3	S70 98W 613	REAR SUPPORT		1	1					
4	S70 17T 614	FRONT SUPPORT		1	1					
5	S70 41L 119	BELL MOUTH		1	1					
6	S70 E03 675	WIRE GRILL - L		1	1					
7	S70 30L 119	BELL MOUTH		1	1					
8	S70 42L 130	MOTOR SUPPORT		1	1					
9	—	SEPARATOR ASSY		1	1	(RG00R046G03)				
10	S70 A04 529	ACCUMULATOR DRAIN PAN		1	1					
11	—	VALVE BED ASSY		1	1	(RG00R048G03)				
12	S70 H13 686	BASE		1	1					
13	S70 30L 655	PANEL HANDLE		2	2					
14	S70 31L 658	COVER PANEL-1		1	1					
15	S70 30L 658	COVER PANEL-2		1	1					
16	S70 E04 682	REAR PANEL		1	1					
17	S70 001 699	LABEL(MITSUBISHI)		1	1					
18	S70 H14 661	SERVICE PANEL		1						
	S70 H15 661	SERVICE PANEL			1					
19	S70 17T 698	REAR GUARD		2	2					



**FUNCTIONAL PARTS**  
**PUH-P1VGAA.UK**  
**PUH-P1VGAA<sub>1</sub>.UK**

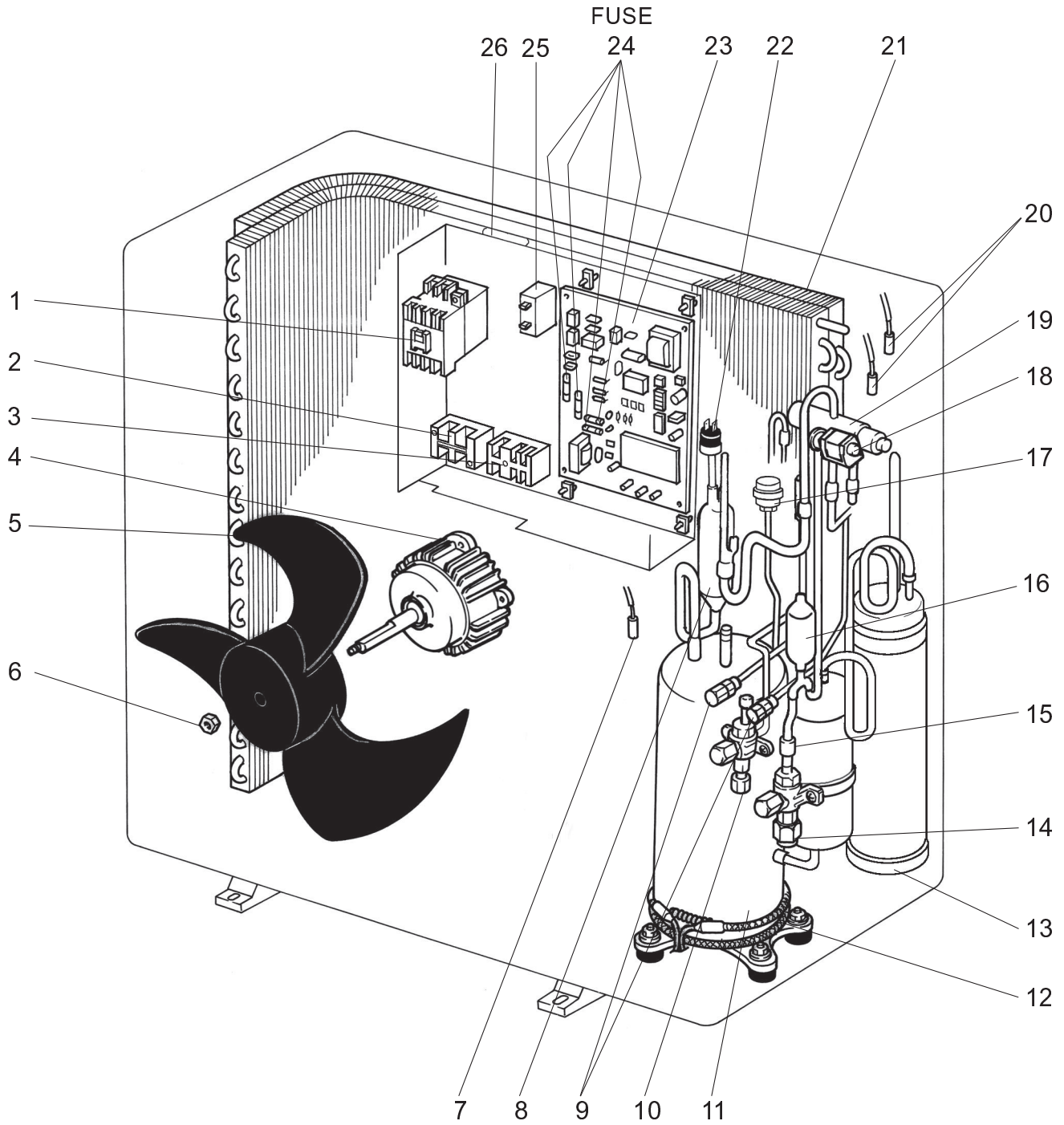


No.	Part No.	Part Name	Specification	Q'ty/set		Remarks	Wiring Diagram Symbol	Recommended Q'ty	Price	
				PUH-P1V					Unit	Amount
				GAA.UK	GAA1.UK					
1	S70 249 708	CONTACTOR	S-U12 240V	1	1		52C			
2	S70 E03 716	TERMINAL BLOCK	2P(L,N)	1	1		TB1			
3	S70 E04 716	TERMINAL BLOCK	3P(S1,S2,S3)	1	1		TB2			
4	S70 E03 763	OUTDOOR FAN MOTOR	N026P72MT	1	1		MF			
5	S70 30L 115	PROPELLER FAN 4		1	1					
6	S70 30L 097	NUT	M8	1	1					
7	S70 E16 202	THERMISTOR (DISCHARGE)		1	1		TH4			
8	S70 E00 467	MUFFLER		1	1					
9	S70 E00 413	CHARGE PLUG		2	2					
10	S70 400 418	STOP VALVE(LIQUID)	1/4"	1	1					
11	S70 061 400	COMPRESSOR	RE189VHSMT	1	1		MC			
12	S70 E02 236	CRANKCASE HEATER	240V / 30W	1	1		CH			
13	S70 E02 440	ACCUMULATOR		1	1					
14	S70 E01 411	BALL VALVE	1/2"	1	1					
15	S70 66L 450	STRAINER	#50-12	1	1					
16	S70 E03 405	FILTER DRYER		1						
17	S70 E03 401	LINEAR EXPANSION VALVE		1	1		LEV			
18	S70 350 242	4-WAY VALVE SOLENOID COIL		1	1		21S4			
19	S70 E01 403	4-WAY VALVE (REVERSING)		1	1					
20	S70 E15 202	THERMISTOR ( LIQUID , CONDENSER / EVAPORATOR )		1	1		TH3, TH6			
21	S70 E99 408	HEAT EXCHANGER		1	1					
22	S70 E00 208	HIGH PRESSURE SWITCH	OFF:3.3MPa ON:2.6MPa	1	1		63H			
23	S70 31L 315	OUTDOOR CONTROLLER BOARD		1	1		O.B			
24	S70 520 239	FUSE	6.3A	4	4	(PART OF BOARD)	FUSE			
25	S70 30L 255	OUTDOOR FAN CAPACITOR	2.2 $\mu$ F 440V	1	1		C3			
26	S70 E00 723	COMPRESSOR CAPACITOR	30 $\mu$ F 420V	1	1		C5			

**FUNCTIONAL PARTS**

**PUH-P1.6VGAA.UK    PUH-P1.6VGAA<sub>1</sub>.UK**

**PU-P1.6VGAA.UK    PU-P1.6VGAA<sub>1</sub>.UK**



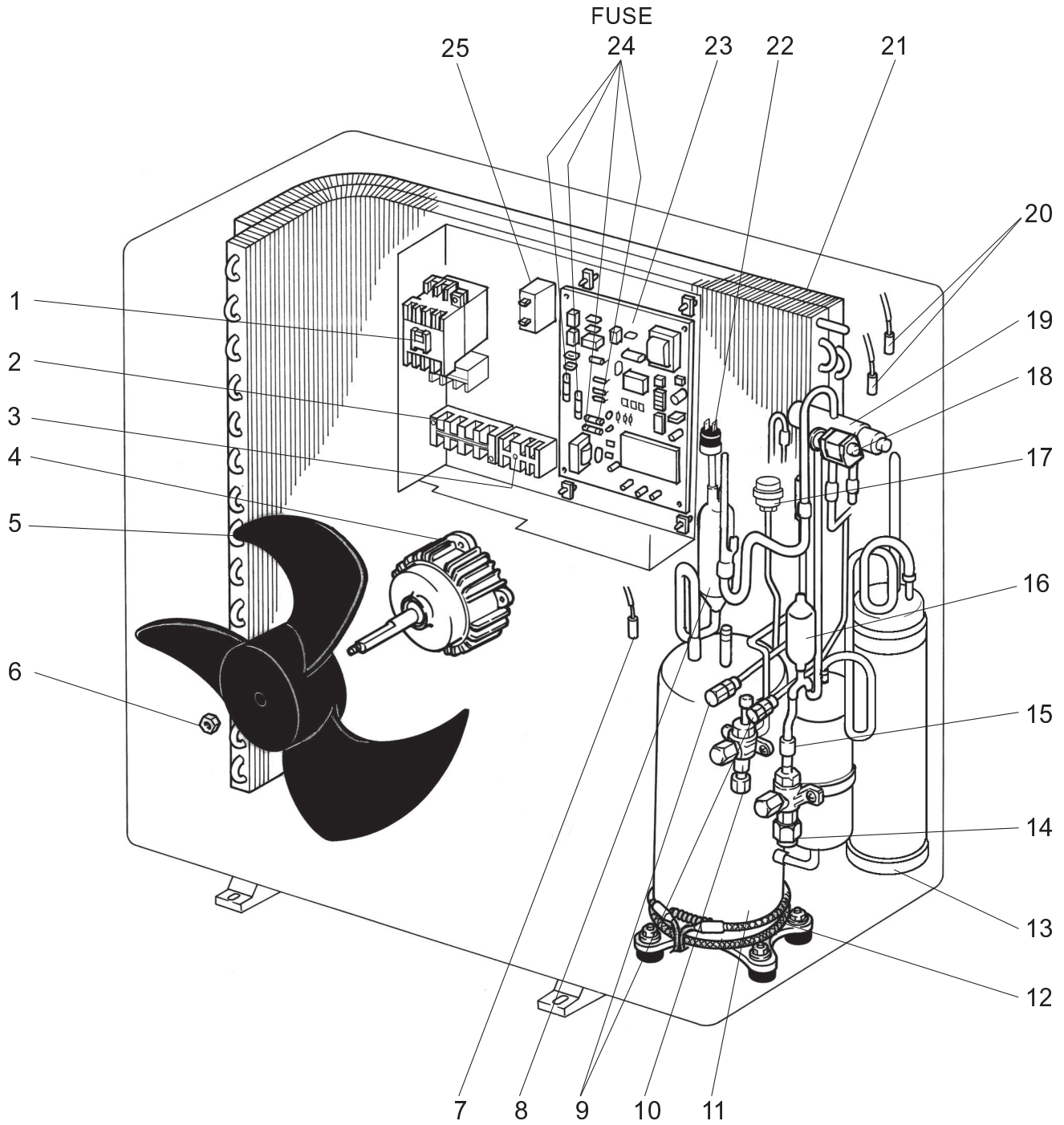
Part number that is circled is not shown in the figure.

No.	Part No.	Part Name	Specification	Q'ty/set				Remarks	Wiring Diagram Symbol	Recommended Q'ty	Price	
				PUH-P1.6V		PU-P1.6V					Unit	Amount
				GAA .UK	GAA <sub>1</sub> .UK	GAA .UK	GAA <sub>1</sub> .UK					
1	S70 249 708	CONTACTOR	S-U12 240V	1	1	1	1		52C			
2	S70 E03 716	TERMINAL BLOCK	2P(L,N)	1	1	1	1		TB1			
3	S70 E04 716	TERMINAL BLOCK	3P(S1,S2,S3)	1	1	1	1		TB2			
4	S70 E03 763	OUTDOOR FAN MOTOR	N026P72MT	1	1	1	1		MF			
5	S70 30L 115	PROPELLER FAN 4		1	1	1	1					
6	S70 30L 097	NUT	M8	1	1	1	1					
7	S70 E16 202	THERMISTOR (DISCHARGE)		1	1	1	1		TH4			
8	S70 E00 467	MUFFLER		1	1	1	1					
9	S70 E00 413	CHARGE PLUG		2	2	2	2					
10	S70 200 418	STOP VALVE(LIQUID)	3/8"	1	1	1	1					
11	S70 062 400	COMPRESSOR	RE277VHSMT	1	1	1	1		MC			
12	S70 E02 236	CRANKCASE HEATER	240V / 30W	1	1	1	1		CH			
13	S70 E02 440	ACCUMULATOR		1	1	1	1					
14	S70 E03 411	BALL VALVE	5/8"	1	1	1	1					
15	S70 66L 450	STRAINER	#50-12	1	1	1	1					
16	S70 E03 405	FILTER DRYER		1		1						
17	S70 E03 401	LINEAR EXPANSION VALVE		1	1	1	1		LEV			
18	S70 350 242	4-WAY VALVE SOLENOID COIL		1	1				21S4			
19	S70 E01 403	4-WAY VALVE (REVERSING)		1	1							
20	S70 E15 202	THERMISTOR ( LIQUID , CONDENSER / EVAPORATOR )		1	1	1	1		TH3, TH6			
21	S70 E00 408	HEAT EXCHANGER		1	1	1	1					
22	S70 E00 208	HIGH PRESSURE SWITCH	OFF:3.3MPa ON:2.6MPa	1	1	1	1		63H			
23	S70 31L 315	OUTDOOR CONTROLLER BOARD		1	1	1	1		O.B			
24	S70 520 239	FUSE	6.3A	4	4	4	4	(PART OF BOARD)	FUSE			
25	S70 30L 255	OUTDOOR FAN CAPACITOR	2.2 $\mu$ F 440V	1	1	1	1		C3			
26	S70 E01 723	COMPRESSOR CAPACITOR	40 $\mu$ F 400V	1	1	1	1		C5			
27	S70 30L 450	STRAINER	#50-9.52	1		1						

**FUNCTIONAL PARTS**

**PUH-P1.6YGAA.UK    PUH-P1.6YGAA<sub>1</sub>.UK**

**PU-P1.6YGAA.UK    PU-P1.6YGAA<sub>1</sub>.UK**



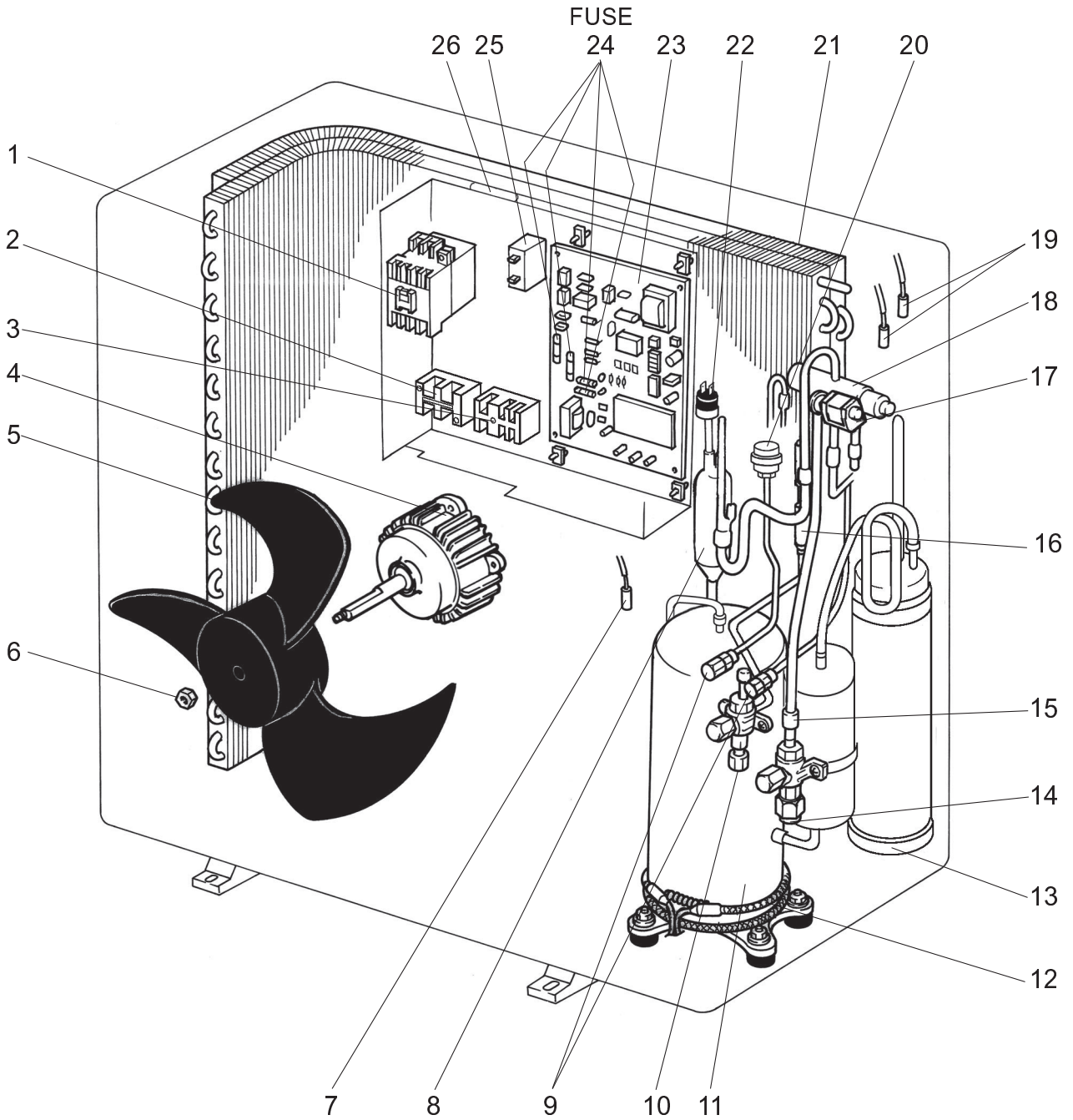
Part number that is circled is not shown in the figure.

No.	Part No.	Part Name	Specification	Q'ty/set				Remarks	Wiring Diagram Symbol	Recommended Q'ty	Price	
				PUH-P1.6Y		PU-P1.6Y					Unit	Amount
				GAA .UK	GAA <sub>1</sub> .UK	GAA .UK	GAA <sub>1</sub> .UK					
1	S70 250 708	CONTACTOR	MSO-N11	1	1	1	1		51C,52C			
2	S70 E03 716	TERMINAL BLOCK	4P(L1,L2,L3,N)	1	1	1	1		TB1			
3	S70 E04 716	TERMINAL BLOCK	3P(S1,S2,S3)	1	1	1	1		TB2			
4	S70 E03 763	OUTDOOR FAN MOTOR	N026P72MT	1	1	1	1		MF			
5	S70 30L 115	PROPELLER FAN 4		1	1	1	1					
6	S70 30L 097	NUT	M8	1	1	1	1					
7	S70 E16 202	THERMISTOR (DISCHARGE)		1	1	1	1		TH4			
8	S70 E00 467	MUFFLER		1	1							
9	S70 E00 413	CHARGE PLUG		2	2	2	2					
10	S70 200 418	STOP VALVE(LIQUID)	3/8"	1	1	1	1					
11	S70 063 400	COMPRESSOR	RE277YFKM	1	1	1	1		MC			
12	S70 E02 236	CRANKCASE HEATER	240V / 38W	1	1	1	1		CH			
13	S70 E02 440	ACCUMULATOR		1	1	1	1					
14	S70 E03 411	BALL VALVE	5/8"	1	1	1	1					
15	S70 66L 450	STRAINER	#50-12	1	1	1	1					
16	S70 E03 405	FILTER DRYER		1		1						
17	S70 E03 401	LINEAR EXPANSION VALVE		1	1	1	1		LEV			
18	S70 350 242	4-WAY VALVE SOLENOID COIL		1	1				21S4			
19	S70 E01 403	4-WAY VALVE (REVERSING)		1	1							
20	S70 E15 202	THERMISTOR ( LIQUID , CONDENSER / EVAPORATOR )		1	1	1	1		TH3, TH6			
21	S70 E00 408	HEAT EXCHANGER		1	1	1	1					
22	S70 E00 208	HIGH PRESSURE SWITCH	OFF:3.3MPa ON:2.6MPa	1	1	1	1		63H			
23	S70 32L 315	OUTDOOR CONTROLLER BOARD		1	1	1	1		O.B			
24	S70 520 239	FUSE	6.3A	4	4	4	4	(PART OF BOARD)	FUSE			
25	S70 30L 255	OUTDOOR FAN CAPACITOR	2.2 $\mu$ F 440V	1	1	1	1		C3			
26	S70 30L 450	STRAINER	#50-9.52	1		1						

**FUNCTIONAL PARTS**

**PUH-P2VGAA.UK    PUH-P2VGAA<sub>1</sub>.UK**

**PU-P2VGAA.UK    PU-P2VGAA<sub>1</sub>.UK**



Part number that is circled is not shown in the figure.

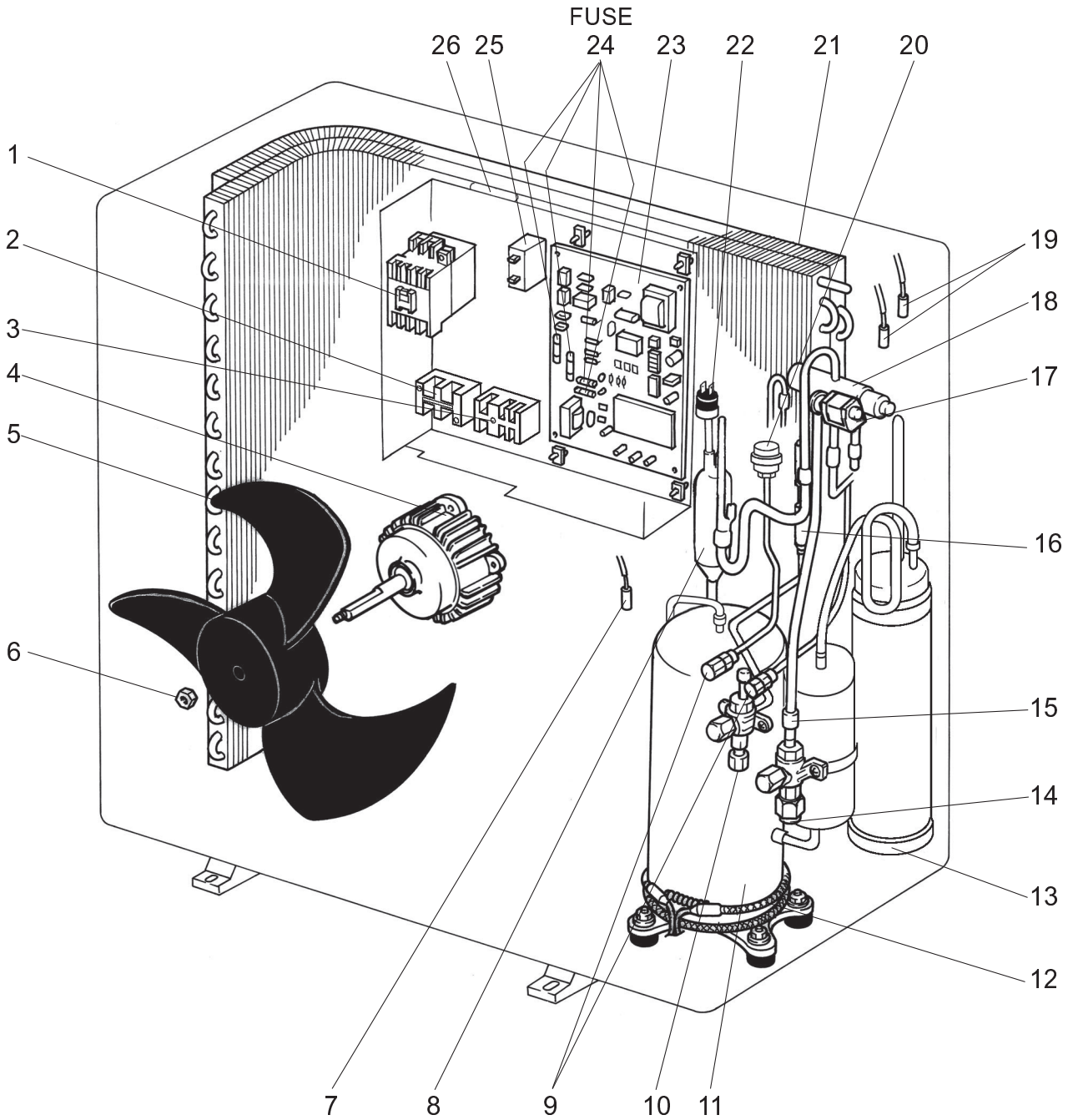
No.	Part No.	Part Name	Specification	Q'ty/set				Remarks	Wiring Diagram Symbol	Recommended Q'ty	Price	
				PUH-P2V		PU-P2V					Unit	Amount
				GAA.UK	GAA:UK	GAA.UK	GAA:UK					
1	S70 330 708	CONTACTOR	S-N18EX	1	1	1	1		52C			
2	S70 E03 716	TERMINAL BLOCK	2P(L,N)	1	1	1	1		TB1			
3	S70 E04 716	TERMINAL BLOCK	3P(S1,S2,S3)	1	1	1	1		TB2			
4	S70 E03 763	OUTDOOR FAN MOTOR	N026P72MT	1	1	1	1		MF			
5	S70 30L 115	PROPELLER FAN 4		1	1	1	1					
6	S70 30L 097	NUT	M8	1	1	1	1					
7	S70 E16 202	THERMISTOR (DISCHARGE)		1	1	1	1		TH4			
8	S70 36L 467	MUFFLER		1	1							
9	S70 E00 413	CHARGE PLUG		2	2	2	2					
10	S70 300 418	STOP VALVE (LIQUID)	3/8"	1	1	1	1					
11	S70 064 400	COMPRESSOR	NE36VMJMT	1	1	1	1		MC			
12	S70 E04 236	CRANKCASE HEATER	240V / 38W	1	1	1	1		CH			
13	S70 E04 440	ACCUMULATOR		1	1	1	1					
14	S70 E04 411	BALL VALVE	5/8"	1	1	1	1					
15	S70 36L 450	STRAINER	#50-16	1	1	1	1					
16	S70 E03 405	FILTER DRYER		1		1						
17	S70 350 242	4-WAY VALVE SOLENOID COIL		1	1				21S4			
18	S70 A00 403	4-WAY VALVE (REVERSING)		1	1							
19	S70 E15 202	THERMISTOR(LIQUID, CONDENSER / EVAPORATOR)		1	1	1	1		TH3, TH6			
20	S70 E02 401	LINEAR EXPANSION VALVE		1	1	1	1		LEV			
21	S70 E02 408	HEAT EXCHANGER		1	1	1	1					
22	S70 E00 208	HIGH PRESSURE SWITCH	OFF:3.3MPa ON:2.6MPa	1	1	1	1		63H			
23	S70 31L 315	OUTDOOR CONTROLLER BOARD		1	1	1	1		O.B			
24	S70 520 239	FUSE	6.3A	4	4	4	4	(PART OF BOARD)	FUSE			
25	S70 30L 255	OUTDOOR FAN CAPACITOR	2.2 $\mu$ F $\times$ 440V	1	1	1	1		C3			
26	S70 100 723	COMPRESSOR CAPACITOR	50 $\mu$ F $\times$ 420V	1	1	1	1		C5			
27	S70 30L 450	STRAINER	#50-9.52	1		1						



**FUNCTIONAL PARTS**

**PUH-P2.5VGAA.UK    PUH-P2.5VGAA1.UK**

**PU-P2.5VGAA.UK    PU-P2.5VGAA1.UK**



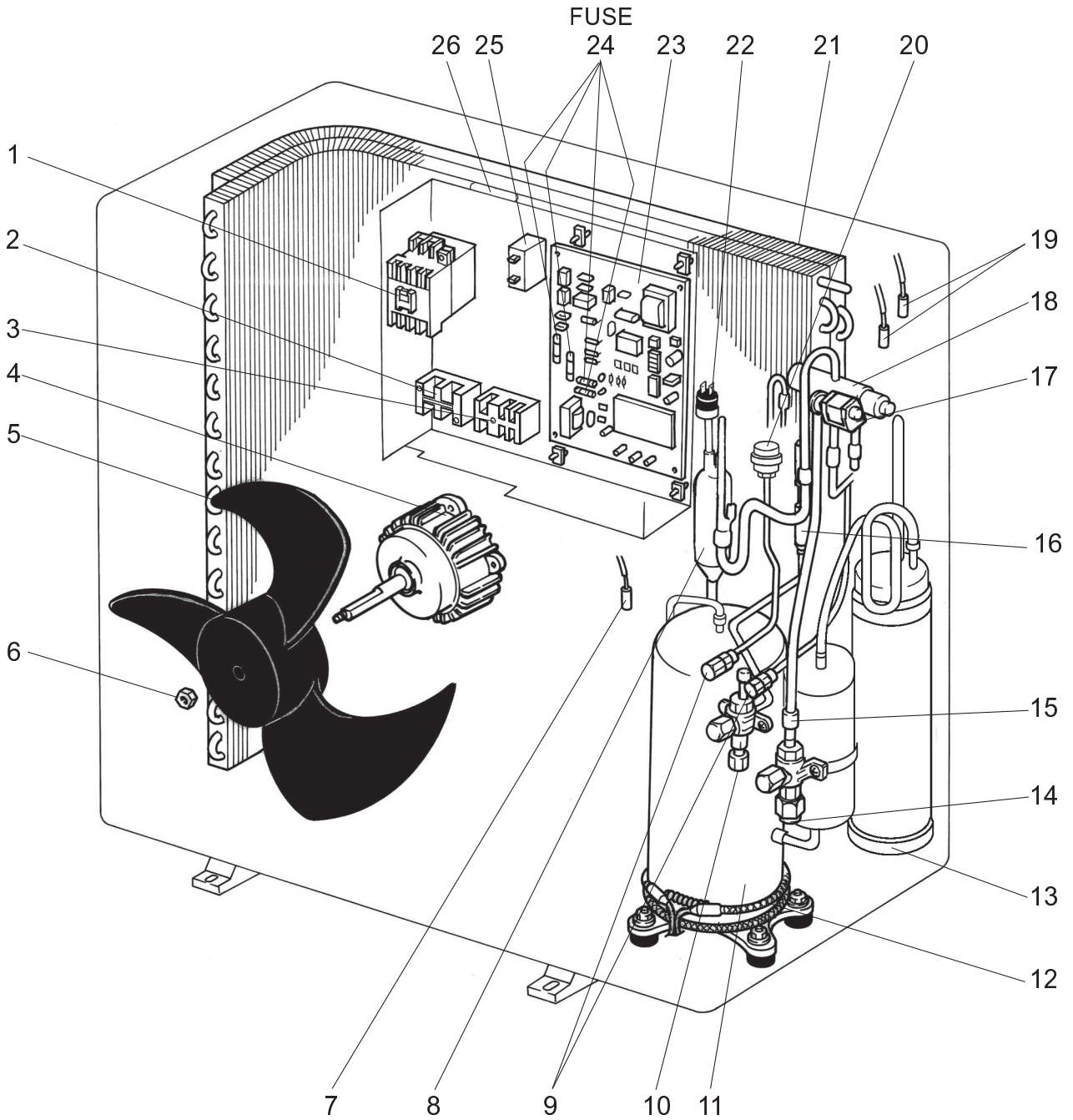
Part number that is circled is not shown in the figure.

No.	Part No.	Part Name	Specification	Q'ty/set				Remarks	Wiring Diagram Symbol	Recommended Q'ty	Price	
				PUH-P2.5V		PU-P2.5V					Unit	Amount
				GAA.UK	GAAi.UK	GAA.UK	GAAi.UK					
1	S70 330 708	CONTACTOR	S-N18EX	1	1	1	1		52C			
2	S70 E03 716	TERMINAL BLOCK	2P(L,N)	1	1	1	1		TB1			
3	S70 E04 716	TERMINAL BLOCK	3P(S1,S2,S3)	1	1	1	1		TB2			
4	S70 E03 763	OUTDOOR FAN MOTOR	N026P72MT	1	1	1	1		MF			
5	S70 30L 115	PROPELLER FAN 4		1	1	1	1					
6	S70 30L 097	NUT	M8	1	1	1	1					
7	S70 E16 202	THERMISTOR (DISCHARGE)		1	1	1	1		TH4			
8	S70 36L 467	MUFFLER		1	1							
9	S70 E00 413	CHARGE PLUG		2	2	2	2					
10	S70 300 418	STOP VALVE (LIQUID)	3/8"	1	1	1	1					
11	S70 066 400	COMPRESSOR	NE41VMJMT	1	1	1	1		MC			
12	S70 E04 236	CRANKCASE HEATER	240V / 38W	1	1	1	1		CH			
13	S70 E03 440	ACCUMULATOR		1	1	1	1					
14	S70 E04 411	BALL VALVE	5/8"	1	1	1	1					
15	S70 36L 450	STRAINER	#50-16	1	1	1	1					
16	S70 E03 405	FILTER DRYER		1		1						
17	S70 350 242	4-WAY VALVE SOLENOID COIL		1	1				21S4			
18	S70 A00 403	4-WAY VALVE (REVERSING)		1	1							
19	S70 E15 202	THERMISTOR (LIQUID, CONDENSER / EVAPORATOR)		1	1	1	1		TH3, TH6			
20	S70 E02 401	LINEAR EXPANSION VALVE		1	1	1	1		LEV			
21	S70 E01 408	HEAT EXCHANGER		1	1	1	1					
22	S70 E00 208	HIGH PRESSURE SWITCH	OFF:3.3MPa ON:2.6MPa	1	1	1	1		63H			
23	S70 31L 315	OUTDOOR CONTROLLER BOARD		1	1	1	1		O.B			
24	S70 520 239	FUSE	6.3A	4	4	4	4	(PART OF BOARD)	FUSE			
25	S70 30L 255	OUTDOOR FAN CAPACITOR	2.2 $\mu$ F $\times$ 440V	1	1	1	1		C3			
26	S70 869 723	COMPRESSOR CAPACITOR	45 $\mu$ F $\times$ 440V	1	1	1	1		C5			
27	S70 30L 450	STRAINER	#50-9.52	1		1						

**FUNCTIONAL PARTS**

**PUH-P3VGAA.UK    PUH-P3VGAA<sub>1</sub>.UK**

**PU-P3VGAA.UK    PU-P3VGAA<sub>1</sub>.UK**



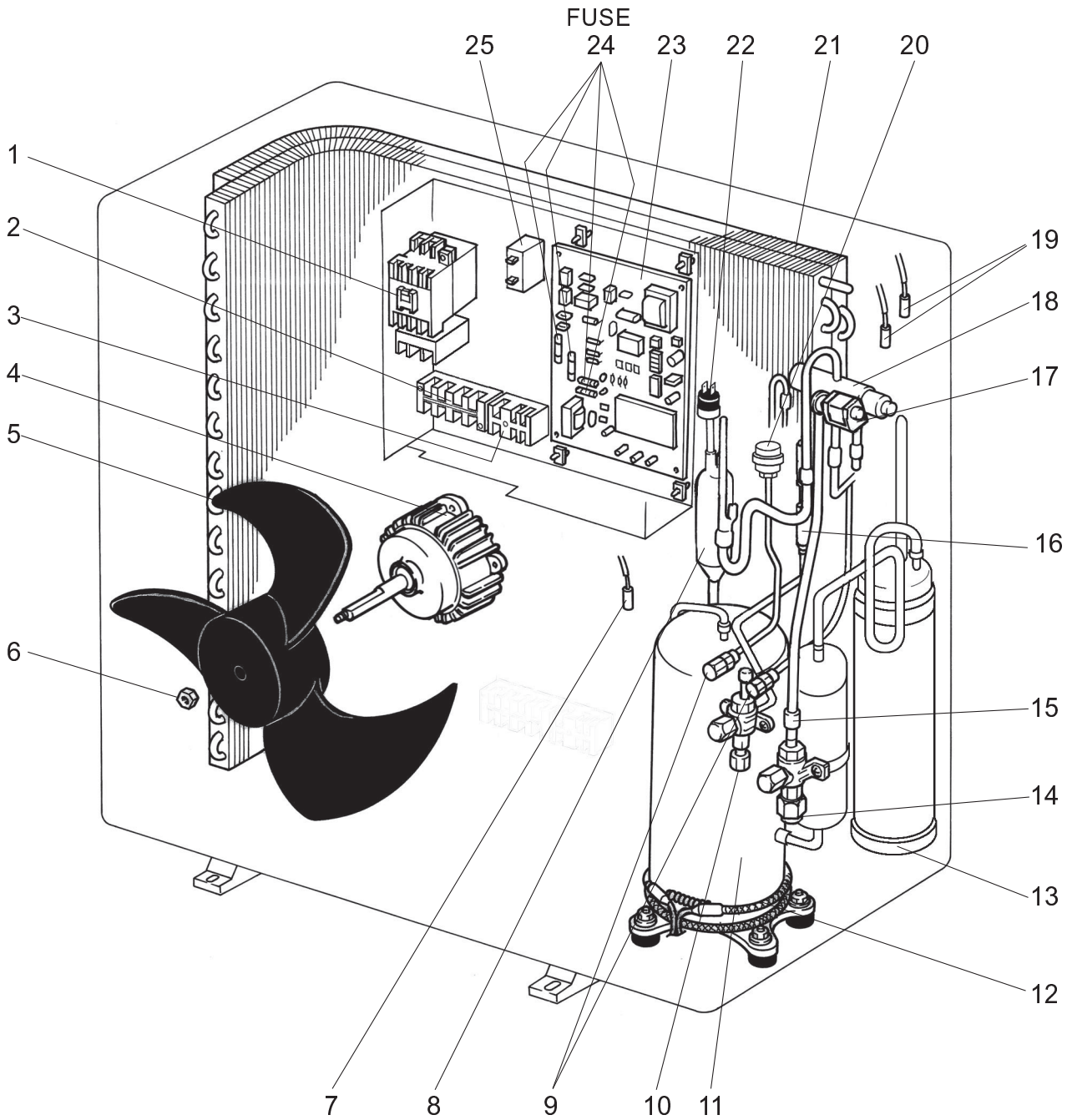
Part number that is circled is not shown in the figure.

No.	Part No.	Part Name	Specification	Q'ty/set				Remarks	Wiring Diagram Symbol	Recommended Q'ty	Price	
				PUH-P3V		PU-P3V					Unit	Amount
				GAA.UK	GAA.i.UK	GAA.UK	GAA.i.UK					
1	S70 330 708	CONTACTOR	S-N18EX	1	1	1	1		52C			
2	S70 E03 716	TERMINAL BLOCK	2P(L,N)	1	1	1	1		TB1			
3	S70 E04 716	TERMINAL BLOCK	3P(S1,S2,S3)	1	1	1	1		TB2			
4	S70 E03 763	OUTDOOR FAN MOTOR	N026P72MT	1	1	1	1		MF			
5	S70 30L 115	PROPELLER FAN 4		1	1	1	1					
6	S70 30L 097	NUT	M8	1	1	1	1					
7	S70 E16 202	THERMISTOR (DISCHARGE)		1	1	1	1		TH4			
8	S70 36L 467	MUFFLER		1	1							
9	S70 E00 413	CHARGE PLUG		2	2	2	2					
10	S70 300 418	STOP VALVE (LIQUID)	3/8"	1	1	1	1					
11	S70 068 400	COMPRESSOR	NE52VNJMT	1	1	1	1		MC			
12	S70 E04 236	CRANKCASE HEATER	240V / 38W	1	1	1	1		CH			
13	S70 E03 440	ACCUMULATOR		1	1	1	1					
14	S70 E04 411	BALL VALVE	5/8"	1	1	1	1					
15	S70 36L 450	STRAINER	#50-16	1	1	1	1					
16	S70 E03 405	FILTER DRYER		1		1						
17	S70 350 242	4-WAY VALVE SOLENOID COIL		1	1				21S4			
18	S70 A00 403	4-WAY VALVE (REVERSING)		1	1							
19	S70 E15 202	THERMISTOR(LIQUID, CONDENSER / EVAPORATOR)		1	1	1	1		TH3, TH6			
20	S70 E02 401	LINEAR EXPANSION VALVE		1	1	1	1		LEV			
21	S70 E03 408	HEAT EXCHANGER		1	1	1	1					
22	S70 E00 208	HIGH PRESSURE SWITCH	OFF:3.3MPa ON:2.6MPa	1	1	1	1		63H			
23	S70 31L 315	OUTDOOR CONTROLLER BOARD		1	1	1	1		O.B			
24	S70 520 239	FUSE	6.3A	4	4	4	4	(PART OF BOARD)	FUSE			
25	S70 30L 255	OUTDOOR FAN CAPACITOR	2.2 $\mu$ F $\times$ 440V	1	1	1	1		C3			
26	S70 976 723	COMPRESSOR CAPACITOR	60 $\mu$ F $\times$ 450V	1	1	1	1		C5			
27	S70 30L 450	STRAINER	#50-9.52	1		1						

**FUNCTIONAL PARTS**

**PUH-P2YGAA.UK    PUH-P2YGAA<sub>1</sub>.UK**

**PU-P2YGAA.UK    PU-P2YGAA<sub>1</sub>.UK**



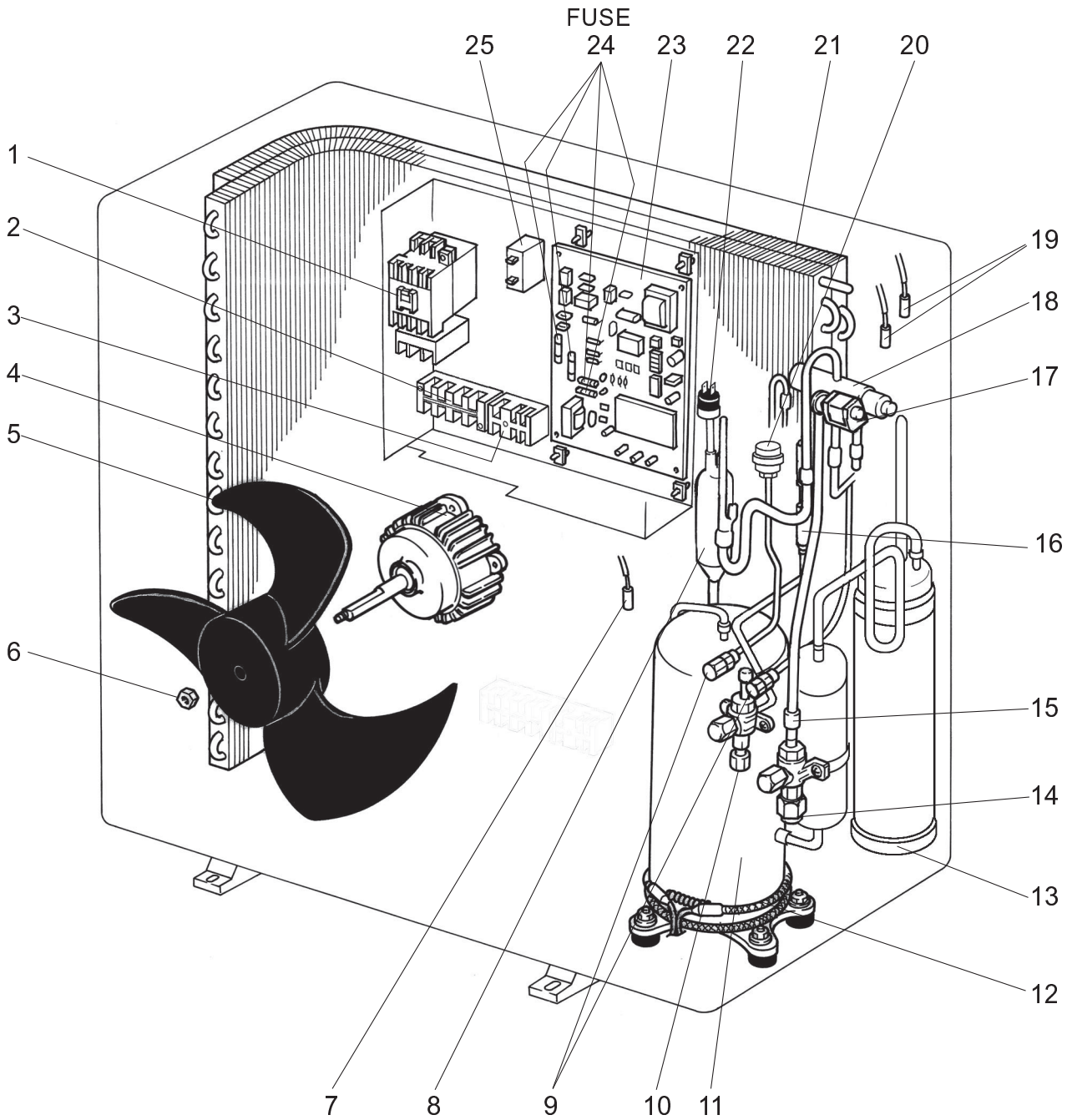
Part number that is circled is not shown in the figure.

No.	Part No.	Part Name	Specification	Q'ty/set				Remarks	Wiring Diagram Symbol	Recommended Q'ty	Price	
				PUH-P2Y		PU-P2Y					Unit	Amount
				GAA:UK	GAA:UK	GAA:UK	GAA:UK					
1	S70 332 708	CONTACTOR	MSO-N11	1	1	1	1		51C,52C			
2	S70 E10 716	TERMINAL BLOCK	4P(L1,L2,L3,N)	1	1	1	1		TB1			
3	S70 E04 716	TERMINAL BLOCK	3P(S1,S2,S3)	1	1	1	1		TB2			
4	S70 E03 763	OUTDOOR FAN MOTOR	N026P72MT	1	1	1	1		MF			
5	S70 30L 115	PROPELLER FAN 4		1	1	1	1					
6	S70 30L 097	NUT	M8	1	1	1	1					
7	S70 E16 202	THERMISTOR (DISCHARGE)		1	1	1	1		TH4			
8	S70 36L 467	MUFFLER		1	1							
9	S70 E00 413	CHARGE PLUG		2	2	2	2					
10	S70 300 418	STOP VALVE (LIQUID)	3/8"	1	1	1	1					
11	S70 065 400	COMPRESSOR	NE36YEKMT	1	1	1	1		MC			
12	S70 E04 236	CRANKCASE HEATER	240V 38W	1	1	1	1					
13	S70 E04 440	ACCUMULATOR		1	1	1	1					
14	S70 E04 411	BALL VALVE	5/8"	1	1	1	1		CH			
15	S70 36L 450	STRAINER	#50-16	1	1	1	1					
16	S70 E03 405	FILTER DRYER		1		1						
17	S70 350 242	4-WAY VALVE SOLENOID COIL		1	1				21S4			
18	S70 A00 403	4-WAY VALVE (REVERSING)		1	1							
19	S70 E15 202	THERMISTOR(LIQUID , CONDENSER / EVAPORATOR )		1	1	1	1		TH3, TH6			
20	S70 E02 401	LINEAR EXPANSION VALVE		1	1	1	1		LEV			
21	S70 E02 408	HEAT EXCHANGER		1	1	1	1					
22	S70 E00 208	HIGH PRESSURE SWITCH	OFF:3.3MPa ON:2.6MPa	1	1	1	1		63H			
23	S70 32L 315	OUTDOOR CONTROLLER BOARD		1	1	1	1		O.B			
24	S70 520 239	FUSE	6.3A	4	4	4	4	(PART OF BOARD)	FUSE			
25	S70 30L 255	OUTDOOR FAN CAPACITOR	2.2 $\mu$ F $\times$ 440V	1	1	1	1		C3			
②⑥	S70 30L 450	STRAINER	#50-9.52	1		1						

**FUNCTIONAL PARTS**

**PUH-P2.5YGAA.UK    PUH-P2.5YGAA<sub>1</sub>.UK**

**PU-P2.5YGAA.UK    PU-P2.5YGAA<sub>1</sub>.UK**



Part number that is circled is not shown in the figure.

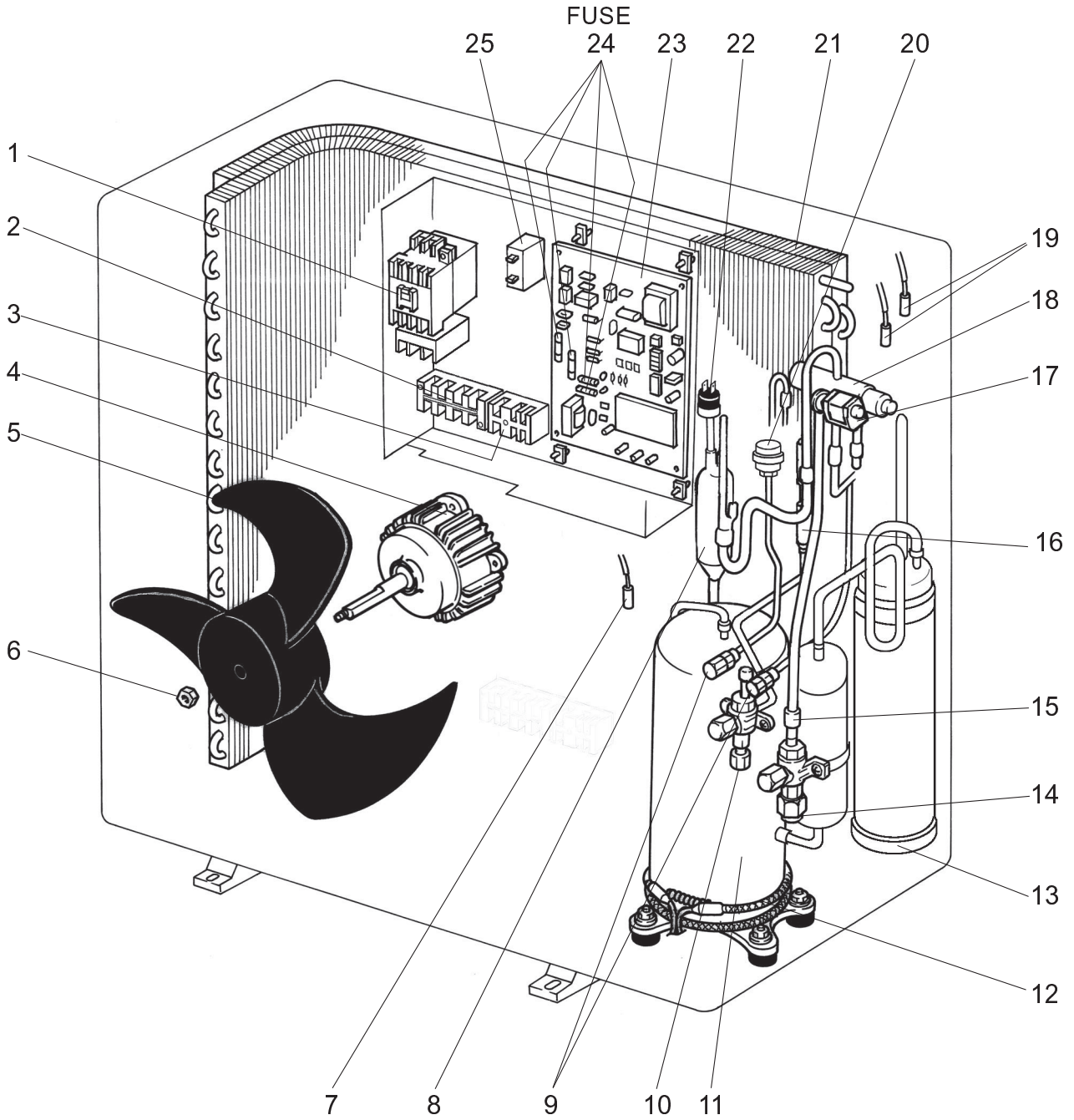
No.	Part No.	Part Name	Specification	Q'ty/set				Remarks	Wiring Diagram Symbol	Recommended Q'ty	Price	
				PUH-P2.5Y		PU-P2.5Y					Unit	Amount
				GAA.UK	GAA <sub>1</sub> .UK	GAA.UK	GAA <sub>1</sub> .UK					
1	S70 333 708	CONTACTOR	MSO-N11	1	1	1	1		51C,52C			
2	S70 E10 716	TERMINAL BLOCK	4P(L1,L2,L3,N)	1	1	1	1		TB1			
3	S70 E04 716	TERMINAL BLOCK	3P(S1,S2,S3)	1	1	1	1		TB2			
4	S70 E03 763	OUTDOOR FAN MOTOR	N026P72MT	1	1	1	1		MF			
5	S70 30L 115	PROPELLER FAN 4		1	1	1	1					
6	S70 30L 097	NUT	M8	1	1	1	1					
7	S70 E16 202	THERMISTOR (DISCHARGE)		1	1	1	1		TH4			
8	S70 36L 467	MUFFLER		1	1							
9	S70 E00 413	CHARGE PLUG		2	2	2	2					
10	S70 300 418	STOP VALVE (LIQUID)	3/8"	1	1	1	1					
11	S70 067 400	COMPRESSOR	NE41YEKMT	1	1	1	1		MC			
12	S70 E04 236	CRANKCASE HEATER	240V / 38W	1	1	1	1					
13	S70 E03 440	ACCUMULATOR		1	1	1	1					
14	S70 E04 411	BALL VALVE	5/8"	1	1	1	1		CH			
15	S70 36L 450	STRAINER	#50-16	1	1	1	1					
16	S70 E03 405	FILTER DRYER		1		1						
17	S70 350 242	4-WAY VALVE SOLENOID COIL		1	1				21S4			
18	S70 A00 403	4-WAY VALVE (REVERSING)		1	1							
19	S70 E15 202	THERMISTOR(LIQUID , CONDENSER / EVAPORATOR)		1	1	1	1		TH3, TH6			
20	S70 E02 401	LINEAR EXPANSION VALVE		1	1	1	1		LEV			
21	S70 E01 408	HEAT EXCHANGER		1	1	1	1					
22	S70 E00 208	HIGH PRESSURE SWITCH	OFF:3.3MPa ON:2.6MPa	1	1	1	1		63H			
23	S70 32L 315	OUTDOOR CONTROLLER BOARD		1	1	1	1		O.B			
24	S70 520 239	FUSE	6.3A	4	4	4	4	(PART OF BOARD)	FUSE			
25	S70 30L 255	OUTDOOR FAN CAPACITOR	2.2 $\mu$ F $\times$ 440V	1	1	1	1		C3			
26	S70 30L 450	STRAINER	#50-9.52	1		1						



**FUNCTIONAL PARTS**

**PUH-P3YGAA.UK    PUH-P3YGAA<sub>1</sub>.UK**

**PU-P3YGAA.UK    PU-P3YGAA<sub>1</sub>.UK**



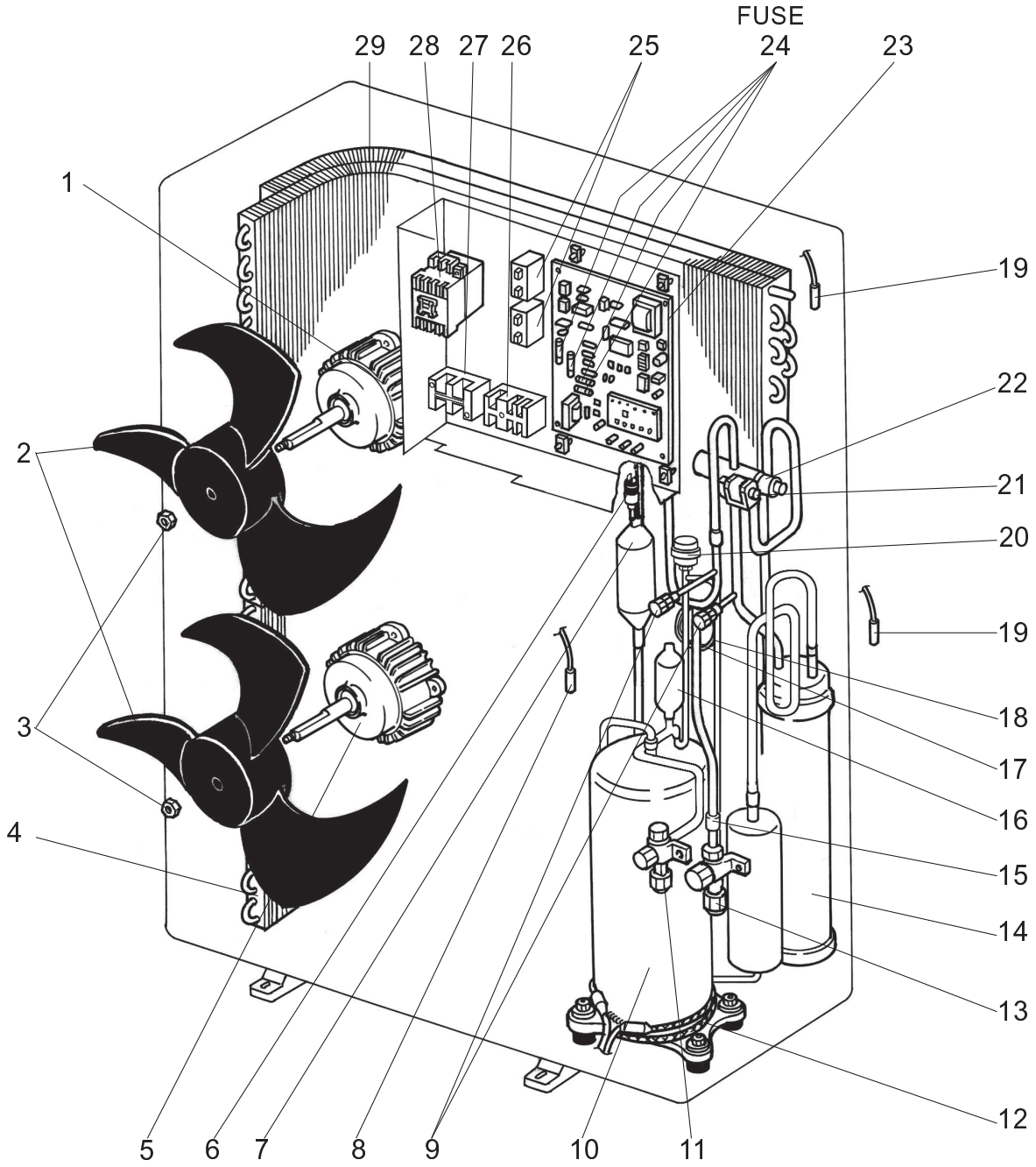
Part number that is circled is not shown in the figure.

No.	Part No.	Part Name	Specification	Q'ty/set				Remarks	Wiring Diagram Symbol	Recommended Q'ty	Price	
				PUH-P3Y		PU-P3Y					Unit	Amount
				GAA.UK	GAA1.UK	GAA.UK	GAA1.UK					
1	S70 331 708	CONTACTOR	MSO-N11	1	1	1	1		51C,52C			
2	S70 E10 716	TERMINAL BLOCK	4P(L1,L2,L3,N)	1	1	1	1		TB1			
3	S70 E04 716	TERMINAL BLOCK	3P(S1,S2,S3)	1	1	1	1		TB2			
4	S70 E03 763	OUTDOOR FAN MOTOR	N026P72MT	1	1	1	1		MF			
5	S70 30L 115	PROPELLER FAN 4		1	1	1	1					
6	S70 30L 097	NUT	M8	1	1	1	1					
7	S70 E16 202	THERMISTOR (DISCHARGE)		1	1	1	1		TH4			
8	S70 36L 467	MUFFLER		1	1							
9	S70 E00 413	CHARGE PLUG		2	2	2	2					
10	S70 300 418	STOP VALVE (LIQUID)	3/8"	1	1	1	1					
11	S70 069 400	COMPRESSOR	NE52YDKMT	1	1	1	1		MC			
12	S70 E04 236	CRANKCASE HEATER	240V / 38W	1	1	1	1					
13	S70 E03 440	ACCUMULATOR		1	1	1	1					
14	S70 E04 411	BALL VALVE	5/8"	1	1	1	1		CH			
15	S70 36L 450	STRAINER	#50-16	1	1	1	1					
16	S70 E03 405	FILTER DRYER		1		1						
17	S70 350 242	4-WAY VALVE SOLENOID COIL		1	1				21S4			
18	S70 A00 403	4-WAY VALVE (REVERSING)		1	1							
19	S70 E15 202	THERMISTOR(LIQUID , CONDENSER / EVAPORATOR)		1	1	1	1		TH3, TH6			
20	S70 E02 401	LINEAR EXPANSION VALVE		1	1	1	1		LEV			
21	S70 E03 408	HEAT EXCHANGER		1	1	1	1					
22	S70 E00 208	HIGH PRESSURE SWITCH	OFF:3.3MPa ON:2.6MPa	1	1	1	1		63H			
23	S70 32L 315	OUTDOOR CONTROLLER BOARD		1	1	1	1		O.B			
24	S70 520 239	FUSE	6.3A	4	4	4	4	(PART OF BOARD)	FUSE			
25	S70 30L 255	OUTDOOR FAN CAPACITOR	2.2 $\mu$ F $\times$ 440V	1	1	1	1		C3			
26	S70 30L 450	STRAINER	#50-9.52	1		1						

**FUNCTIONAL PARTS**

**PUH-P4VGAA.UK    PUH-P4VGAA<sub>1</sub>.UK**

**PU-P4VGAA.UK    PU-P4VGAA<sub>1</sub>.UK**



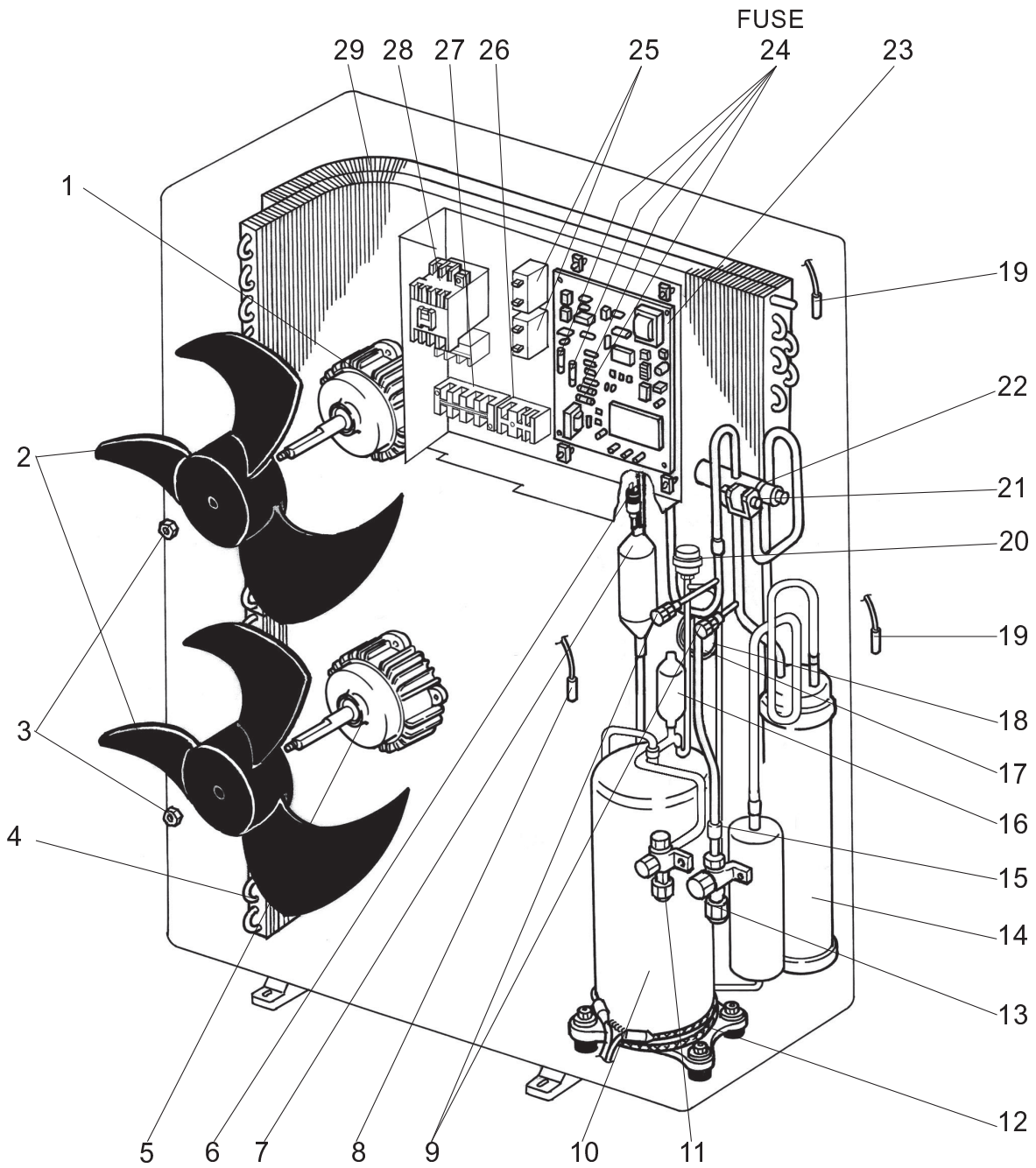
Part number that are circled are not shown in the figure.

No.	Part No.	Part Name	Specification	Q'ty/set				Remarks	Wiring Diagram Symbol	Recom-mended Q'ty	Price	
				PUH-P4V		PU-P4V					Unit	Amount
				GAA.UK	GAA1.UK	GAA.UK	GAA1.UK					
1	S70 E03 763	OUTDOOR FAN MOTOR	N026P72MT	1	1	1	1		MF			
2	S70 30L 115	PROPELLER FAN 4		2	2	2	2					
3	S70 30L 097	NUT	M8	2	2	2	2					
4	S70 E05 408	HEAT EXCHANGER		1	1	1	1					
5	S70 E04 763	OUTDOOR FAN MOTOR	N02A672MT	1	1	1	1		MF			
6	S70 E00 208	HIGH PRESSURE SWITCH	OFF:3.3MPa ON:2.6MPa	1	1	1	1		63H			
7	S70 42L 467	MUFFLER		1	1							
8	S70 E18 202	THERMISTOR (DISCHARGE)		1	1	1	1		TH4			
9	S70 E00 413	CHARGE PLUG		2	2	2	2					
10	S70 071 400	COMPRESSOR	NE56VNJMT	1	1	1	1		MC			
11	S70 300 418	STOP VALVE (LIQUID)	3/8"	1	1	1	1					
12	S70 E05 236	CRANKCASE HEATER	240V / 38W	1	1	1	1		CH			
13	S70 E05 411	BALL VALVE	3/4"	1	1	1	1					
14	S70 E05 440	ACCUMULATOR		1	1	1	1					
15	S70 42L 450	STRAINER	#50-19.1	1	1	1	1					
16	S70 E03 405	FILTER DRYER		1		1						
17	S70 E01 425	CAPILLARY TUBE	φ4.0 X φ3.0 X 350mm	1	1	1	1					
18	S70 E02 425	CAPILLARY TUBE	φ4.0 X φ3.0 X 350mm	1	1	1	1					
19	S70 E14 202	THERMISTOR(LIQUID, CONDENSER / EVAPORATOR)		1	1	1	1		TH3, TH6			
20	S70 E05 401	LINEAR EXPANSION VALVE		1	1	1	1		LEV			
21	S70 350 242	4-WAY VALVE SOLENOID COIL		1	1				21S4			
22	S70 260 403	4-WAY VALVE (REVERSING)		1	1							
23	S70 31L 315	OUTDOOR CONTROLLER BOARD		1	1	1	1		O.B			
24	S70 520 239	FUSE	6.3A	4	4	4	4	(PART OF BOARD)	FUSE			
25	S70 30L 255	OUTDOOR FAN CAPACITOR	2.2μF X 440V	2	2	2	2		C3, C4			
26	S70 E04 716	TERMINAL BLOCK	3P(S1,S2,S3)	1	1	1	1		TB2			
27	S70 E03 716	TERMINAL BLOCK	2P(L,N)	1	1	1	1		TB1			
28	S70 330 708	CONTACTOR	S-N18EX	1	1	1	1		52C			
29	S70 E04 408	HEAT EXCHANGER		1	1	1	1					
30	S70 30L 450	STRAINER	#50-9.52	1		1						
31	S70 976 723	COMPRESSOR CAPACITOR	60μF X 450V	1		1			C5			

# FUNCTIONAL PARTS

PUH-P4YGAA.UK    PUH-P4YGAA<sub>1</sub>.UK

PU-P4YGAA.UK    PU-P4YGAA<sub>1</sub>.UK



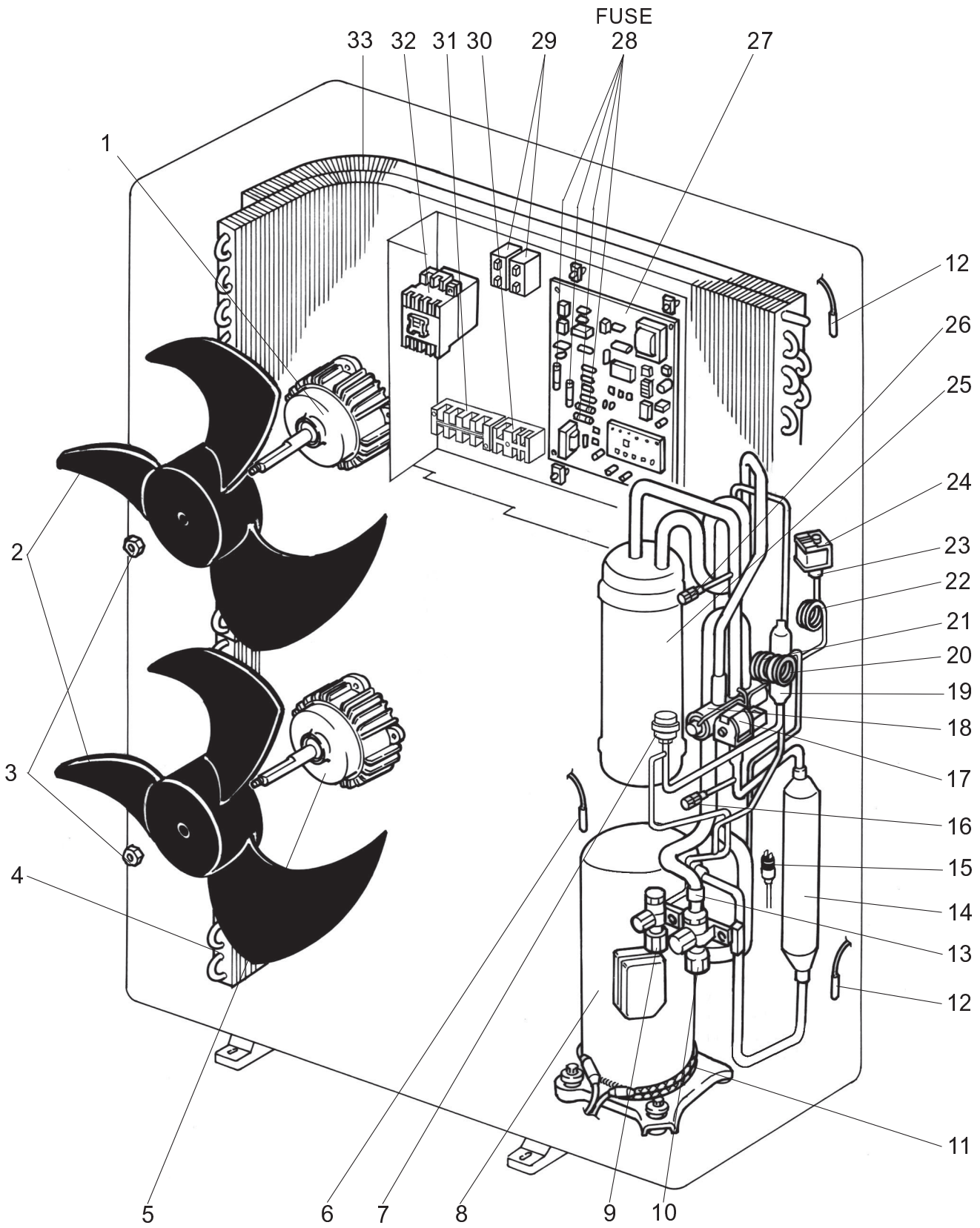
Part number that is circled is not shown in the figure.

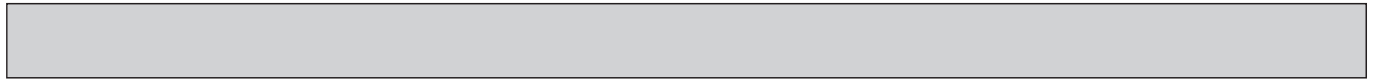
No.	Part No.	Part Name	Specification	Q'ty/set				Remarks	Wiring Diagram Symbol	Recommended Qty	Price	
				PUH-P4Y		PU-P4Y					Unit	Amount
				GAA.UK	GAA1.UK	GAA.UK	GAA1.UK					
1	S70 E03 763	OUTDOOR FAN MOTOR	N026P72MT	1	1	1	1		MF			
2	S70 30L 115	PROPELLER FAN 4		2	2	2	2					
3	S70 30L 097	NUT	M8	2	2	2	2					
4	S70 E05 408	HEAT EXCHANGER		1	1	1	1					
5	S70 E04 763	OUTDOOR FAN MOTOR	N02A672MT	1	1	1	1		MF			
6	S70 E00 208	HIGH PRESSURE SWITCH	OFF:3.3MPa ON:2.6MPa	1	1	1	1		63H			
7	S70 42L 467	MUFFLER		1	1							
8	S70 E18 202	THERMISTOR (DISCHARGE)		1	1	1	1		TH4			
9	S70 E00 413	CHARGE PLUG		2	2	2	2					
10	S70 070 400	COMPRESSOR	NE56YDKMT	1	1	1	1		MC			
11	S70 300 418	STOP VALVE (LIQUID)	3/8"	1	1	1	1					
12	S70 E05 236	CRANKCASE HEATER	240V / 38W	1	1	1	1		CH			
13	S70 E05 411	BALL VALVE	3/4"	1	1	1	1					
14	S70 E05 440	ACCUMULATOR		1	1	1	1					
15	S70 42L 450	STRAINER	#50-19.1	1	1	1	1					
16	S70 E03 405	FILTER DRYER		1		1						
17	S70 E01 425	CAPILLARY TUBE	φ4.0 X φ3.0 X 350mm	1	1	1	1					
18	S70 E02 425	CAPILLARY TUBE	φ4.0 X φ3.0 X 350mm	1	1	1	1					
19	S70 E14 202	THERMISTOR(LIQUID, CONDENSER / EVAPORATOR)		1	1	1	1		TH3, TH6			
20	S70 E05 401	LINEAR EXPANSION VALVE		1	1	1	1		LEV			
21	S70 350 242	4-WAY VALVE SOLENOID COIL		1	1				21S4			
22	S70 260 403	4-WAY VALVE (REVERSING)		1	1							
23	S70 32L 315	OUTDOOR CONTROLLER BOARD		1	1	1	1		O.B			
24	S70 520 239	FUSE	6.3A	4	4	4	4	(PART OF BOARD)	FUSE			
25	S70 30L 255	OUTDOOR FAN CAPACITOR	2.2μF X 440V	2	2	2	2		C3, C4			
26	S70 E04 716	TERMINAL BLOCK	3P(S1,S2,S3)	1	1	1	1		TB2			
27	S70 E10 716	TERMINAL BLOCK	4P(L1,L2,L3,N)	1	1	1	1		TB1			
28	S70 331 708	CONTACTOR	MSO-N11	1	1	1	1		51C, 52C			
29	S70 E04 408	HEAT EXCHANGER		1	1	1	1					
③0	S70 30L 450	STRAINER	#50-9.52	1		1						

**FUNCTIONAL PARTS**

**PUH-P5YGAA.UK    PUH-P5YGAA<sub>1</sub>.UK**

**PU-P5YGAA.UK    PU-P5YGAA<sub>1</sub>.UK**





Part number that are circled are not shown in the figure.

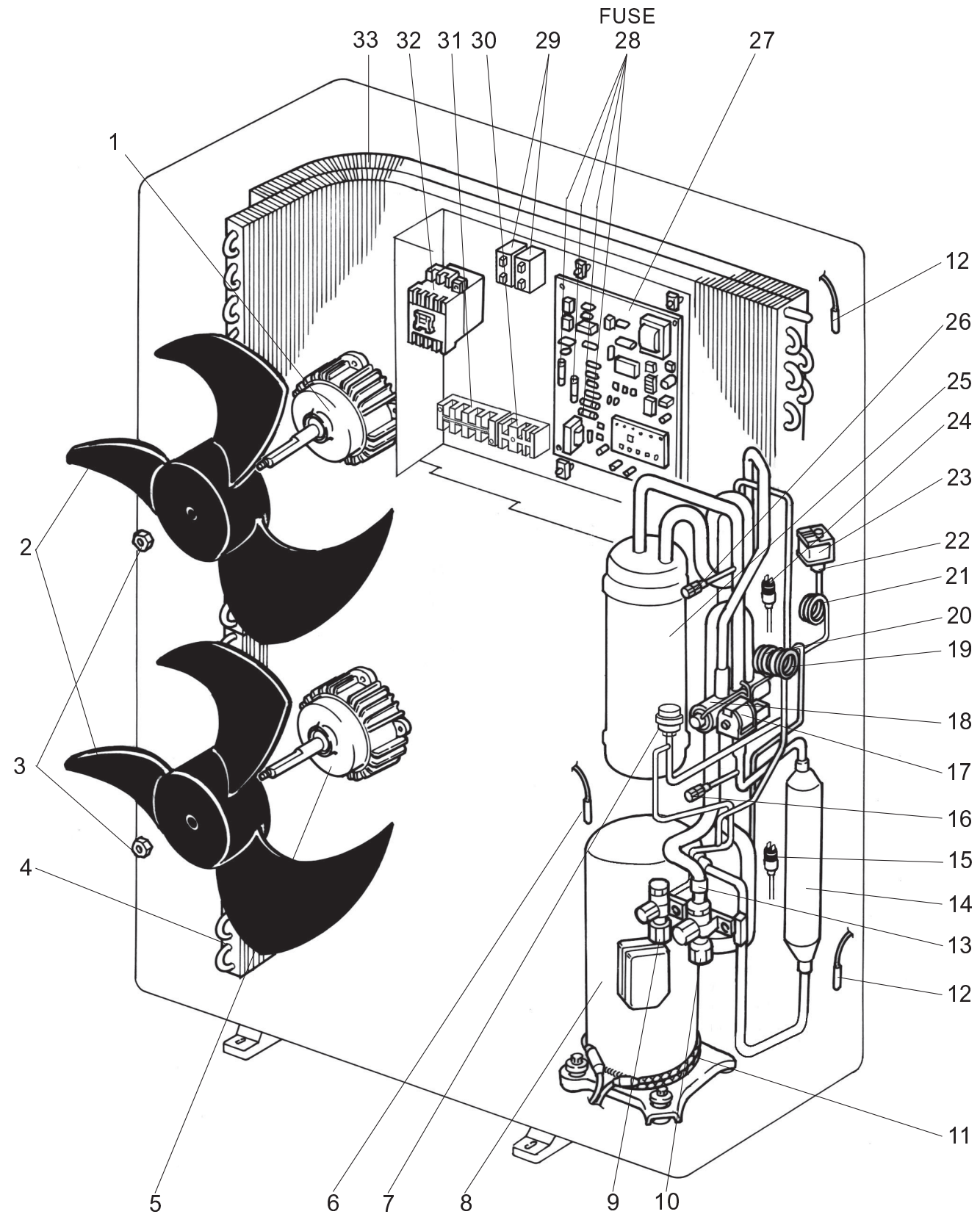
No.	Part No.	Part Name	Specification	Q'ty/set				Remarks	Wiring Diagram Symbol	Recom-mended Q'ty	Price	
				PUH-P5Y		PU-P5Y					Unit	Amount
				GAA.UK	GAA:UK	GAA.UK	GAA:UK					
1	S70 E03 763	OUTDOOR FAN MOTOR	N026P72MT	1	1	1	1		MF			
2	S70 30L 115	PROPELLER FAN 4		2	2	2	2					
3	S70 30L 097	NUT	M8	2	2	2	2					
4	S70 E07 408	HEAT EXCHANGER		1	1	1	1					
5	S70 E04 763	OUTDOOR FAN MOTOR	N02A672MT	1	1	1	1		MF			
6	S70 E19 202	THERMISTOR (DISCHARGE)		1	1	1	1		TH4			
7	S70 E06 401	LINEAR EXPANSION VALVE		1	1	1	1		LEV			
※ 8	S70 080 400	COMPRESSOR (WITH CONVERSION KIT)	ZR61KCW-TFD-522	1	1	1	1		MC			
9	S70 300 418	STOP VALVE (LIQUID)	3/8"	1	1	1	1					
10	S70 E05 411	BALL VALVE	3/4"	1	1	1	1					
11	S70 E01 236	CRANKCASE HEATER	240V / 38W	1	1	1	1		CH			
12	S70 E17 202	THERMISTOR (LIQUID, CONDENSER / EVAPORATOR)		1	1	1	1		TH3, TH6			
13	S70 42L 450	STRAINER	#50-19.1	1	1	1	1					
14	S70 42L 467	MUFFLER		1	1							
15	S70 E00 208	HIGH PRESSURE SWITCH	OFF:3.3MPa ON:2.6MPa	1	1	1	1		63H			
16	S70 E01 413	CHARGE PLUG		1	1	1	1					
17	S70 251 242	4-WAY VALVE SOLENOID COIL		1	1				21S4			
18	S70 E02 403	4-WAY VALVE (REVERSING)		1	1							
19	S70 E03 405	FILTER DRYER		1	1	1	1					
20	S70 E05 425	CAPILLARY TUBE	φ4.0 X φ3.0 X 200mm	1	1	1	1					
21	S70 E06 425	CAPILLARY TUBE	φ4.0 X φ3.0 X 200mm	1	1	1	1					
22	S70 E03 425	CAPILLARY TUBE	φ4.0 X φ2.0 X 400mm	1	1							
23	S70 A14 428	BYPASS VALVE		1	1							
24	S70 351 242	BYPASS VALVE SOLENOID COIL		1	1				SV			
25	S70 E06 440	ACCUMULATOR		1	1	1	1					
26	S70 E00 413	CHARGE PLUG		1	1	1	1					
27	S70 32L 315	OUTDOOR CONTROLLER BOARD		1	1	1	1		O.B			
28	S70 520 239	FUSE	6.3A	4	4	4	4	(PART OF BOARD)	FUSE			
29	S70 17T 255	FAN MOTOR CAPACITOR	3.5μF X 440V	2	2	2	2		C3, C4			
30	S70 E04 716	TERMINAL BLOCK	3P(S1,S2,S3)	1	1	1	1		TB2			
31	S70 E10 716	TERMINAL BLOCK	4P(L1,L2,L3,N)	1	1	1	1		TB1			
32	S70 334 708	CONTACTOR	MSO-N20	1	1	1	1		51C, 52C			
33	S70 E06 408	HEAT EXCHANGER		1	1	1	1					
③④	S70 30L 450	STRAINER	#50-9.52	1	1	1	1					
③⑤	S70 516 495	ACOCSTIC COMPRESSOR CAP		1	1	1	1					
③⑥	S70 516 496	ACOCSTIC COMPRESSOR BASE		1	1	1	1					
③⑦	S70 516 497	ACOCSTIC COMPRESSOR JACKET		1	1	1	1					

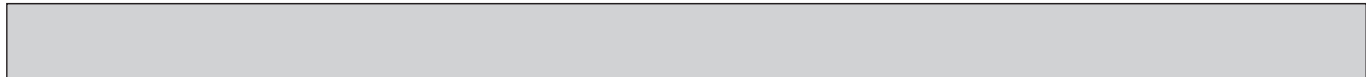
※ COMPRESSOR COVERSION KIT (TFD-230) is packaged with compressor ZR61KCE-TFD-522 which Parts No. is S70 080 400.

COMPRESSOR CONVERSION KIT (TFD-230) is necessary only for replacing faston type COMPRESSOR ZR61KCE-TFD-230 with screw type COMPRESSOR ZR61KCW-TFD-522.



**FUNCTIONAL PARTS**  
**PUH-P5YGAA<sub>2</sub>.UK**  
**PU-P5YGAA<sub>2</sub>.UK**





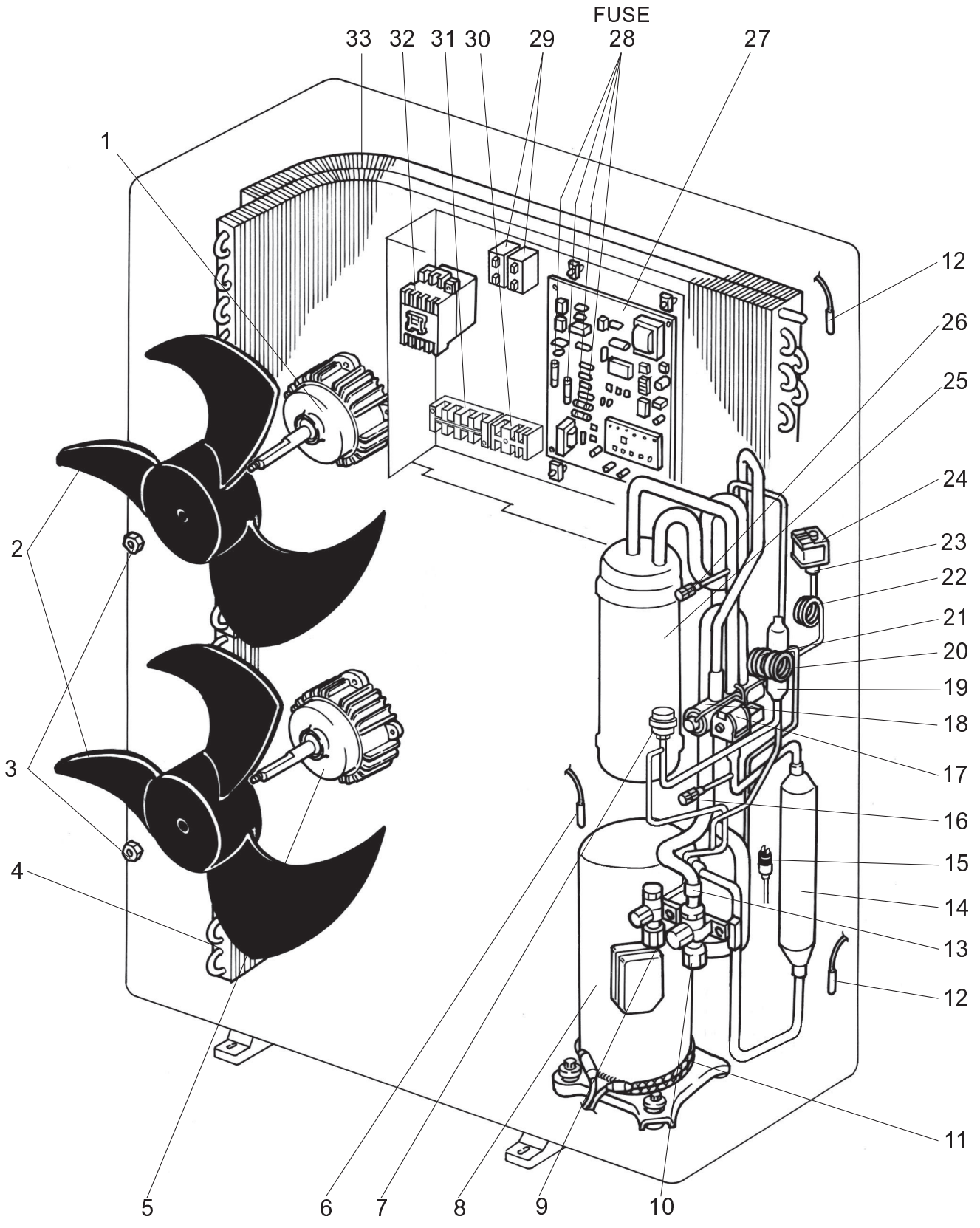
Part number that is circled is not shown in the figure.

No.	Part No.	Part Name	Specification	Q'ty/set		Remarks	Wiring Diagram Symbol	Recommended Q'ty	Price	
				PUH-P5 YGAA2.UK	PU-P5 YGAA2.UK				Unit	Amount
1	S70 E03 763	OUTDOOR FAN MOTOR	N026P72MT	1	1		MF			
2	S70 30L 115	PROPELLER FAN 4		2	2					
3	S70 30L 097	DOME CAP NUT	M8	2	2					
4	S70 E07 408	HEAT EXCHANGER (UNDER)		1	1					
5	S70 E04 763	OUTDOOR FAN MOTOR	N02A672MT	1	1		MF			
6	S70 E19 202	THERMISTOR (DISCHARGE)		1	1		TH4			
7	S70 E06 401	LINEAR EXPANSION VALVE		1	1		LEV			
8	S70 H10 400	COMPRESSOR	BE82YADMT	1	1		MC			
9	S70 300 418	STOP VALVE (LIQUID)	3/8"	1	1					
10	S70 E05 411	BALL VALVE	3/4"	1	1					
11	S70 H40 236	CRANKCASE HEATER	240V / 38W	1	1		CH			
12	S70 E17 202	THERMISTOR (LIQUID, CONDENSER / EVAPORATOR)		1	1		TH3, TH6			
13	S70 42L 450	STRAINER	#50-19.1	1	1					
14	S70 42H 467	MUFFLER		1						
15	S70 E00 208	HIGH PRESSURE SWITCH	OFF:3.3MPa ON :2.6MPa	1	1		63H			
16	S70 E01 413	CHARGE PLUG		1	1					
17	S70 251 242	4-WAY VALVE SOLENOID COIL		1			21S4			
18	S70 E02 403	4-WAY VALVE (REVERSING)		1						
19	S70 E05 425	CAPILLARY TUBE	φ4.0 X φ3.0 X 200mm	1	1					
20	S70 E06 425	CAPILLARY TUBE	φ4.0 X φ3.0 X 200mm	1	1					
21	S70 E03 425	CAPILLARY TUBE	φ4.0 X φ2.0 X 400mm	1						
22	S70 A14 428	BYPASS VALVE		1						
23	S70 351 242	BYPASS VALVE SOLENOID COIL		1			SV			
24	S70 H20 209	LOW PRESSURE SWITCH	OFF:-0.03MPa ON :0.05MPa	1	1		63L			
25	S70 E06 440	ACCUMULATOR		1	1					
26	S70 E00 413	CHARGE PLUG		1	1					
27	S70 33H 315	OUTDOOR CONTROLLER BOARD		1	1		O.B			
28	S70 520 239	FUSE	6.3A	4	4	(PART OF BOARD)	FUSE			
29	S70 17T 255	FAN MOTOR CAPACITOR	3.5μF X 440V	2	2		C3, C4			
30	S70 E04 716	TERMINAL BLOCK	3P(S1,S2,S3)	1	1		TB2			
31	S70 E10 716	TERMINAL BLOCK	4P(L1,L2,L3,N)	1	1		TB1			
32	S70 334 708	CONTACTOR	MSO-N20	1	1		51C, 52C			
33	S70 H12 408	HEAT EXCHANGER (TOP)		1	1					
34	S70 30L 450	STRAINER	#50-9.52	1	1					
35	S70 H30 450	STRAINER ASSY		1	1					

**FUNCTIONAL PARTS**

**PUH-P6YGAA.UK    PUH-P6YGAA<sub>1</sub>.UK**

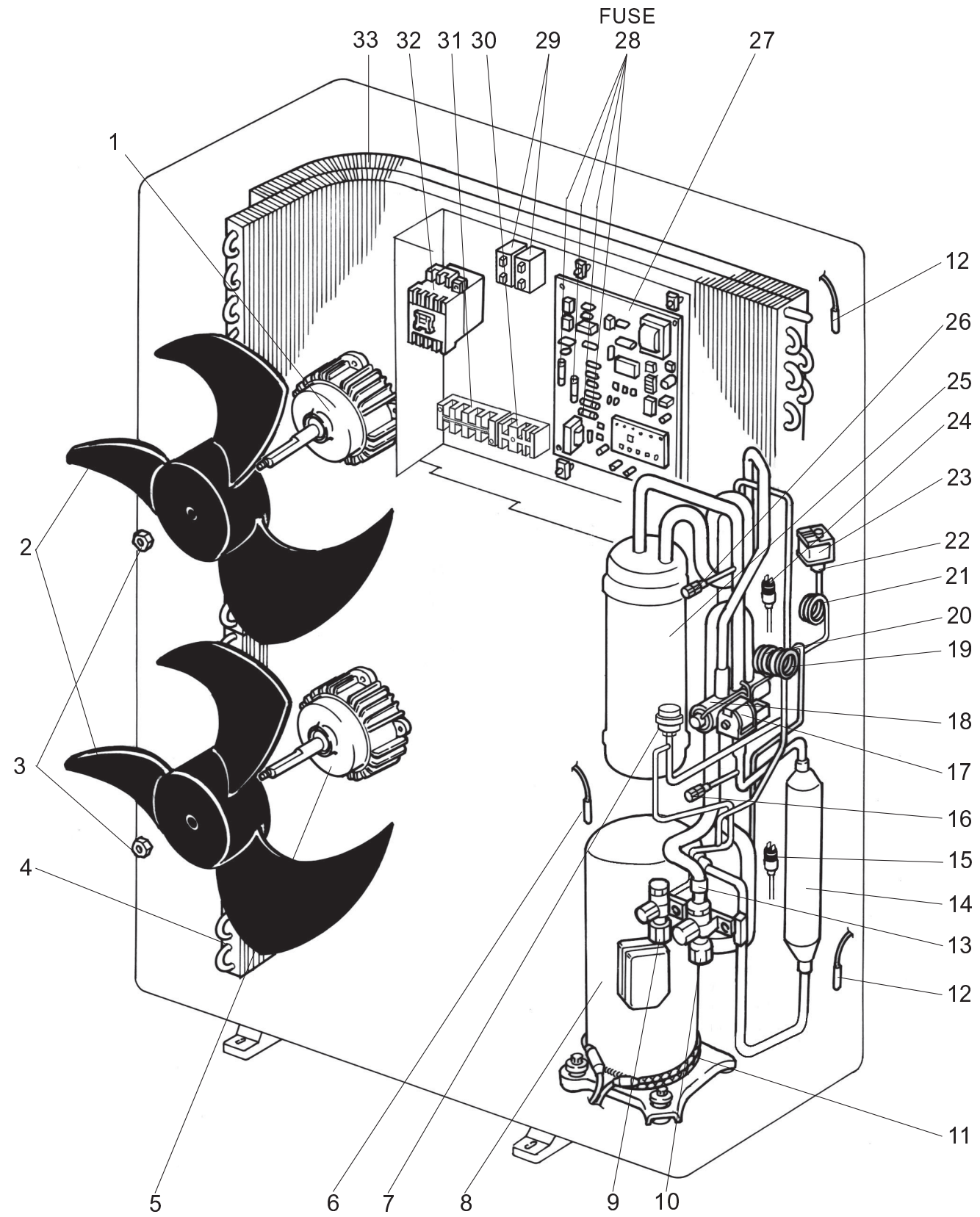
**PU-P6YGAA.UK    PU-P6YGAA<sub>1</sub>.UK**



Part number that are circled are not shown in the figure.

No.	Part No.	Part Name	Specification	Q'ty/set				Remarks	Wiring Diagram Symbol	Recommended Q'ty	Price	
				PUH-P6Y		PU-P6Y					Unit	Amount
				GAA.UK	GAA:UK	GAA.UK	GAA:UK					
1	S70 E03 763	OUTDOOR FAN MOTOR	N026P72MT	1	1	1	1		MF			
2	S70 30L 115	PROPELLER FAN 4		2	2	2	2					
3	S70 30L 097	NUT	M8	2	2	2	2					
4	S70 E07 408	HEAT EXCHANGER		1	1	1	1					
5	S70 E04 763	OUTDOOR FAN MOTOR	N02A672MT	1	1	1	1		MF			
6	S70 E19 202	THERMISTOR (DISCHARGE)		1	1	1	1		TH4			
7	S70 E06 401	LINEAR EXPANSION VALVE		1	1	1	1		LEV			
8	S70 081 400	COMPRESSOR	ZR72KCW-TFD-522	1	1	1	1		MC			
9	S70 300 418	STOP VALVE (LIQUID)	3/8"	1	1	1	1					
10	S70 E05 411	BALL VALVE	3/4"	1	1	1	1					
11	S70 E01 236	CRANKCASE HEATER	240V / 38W	1	1	1	1		CH			
12	S70 E17 202	THERMISTOR ( LIQUID, CONDENSER / EVAPORATOR)		1	1	1	1		TH3, TH6			
13	S70 42L 450	STRAINER	#50-19.1	1	1	1	1					
14	S70 42L 467	MUFFLER		1	1							
15	S70 E00 208	HIGH PRESSURE SWITCH	OFF:3.3MPa ON:2.6MPa	1	1	1	1		63H			
16	S70 E01 413	CHARGE PLUG		1	1	1	1					
17	S70 251 242	4-WAY VALVE SOLENOID COIL		1	1				21S4			
18	S70 E02 403	4-WAY VALVE (REVERSING)		1	1							
19	S70 E03 405	FILTER DRYER		1	1	1	1					
20	S70 E05 425	CAPILLARY TUBE	φ4.0 X φ3.0 X 200mm	1	1	1	1					
21	S70 E06 425	CAPILLARY TUBE	φ4.0 X φ3.0 X 200mm	1	1	1	1					
22	S70 E04 425	CAPILLARY TUBE	φ4.0 X φ3.0 X 450mm	1	1							
23	S70 A14 428	BYPASS VALVE		1	1							
24	S70 351 242	BYPASS VALVE SOLENOID COIL		1	1				SV			
25	S70 E06 440	ACCUMULATOR		1	1	1	1					
26	S70 E00 413	CHARGE PLUG		1	1	1	1					
27	S70 32L 315	OUTDOOR CONTROLLER BOARD		1	1	1	1		O.B			
28	S70 520 239	FUSE	6.3A	4	4	4	4	(PART OF BOARD)	FUSE			
29	S70 17T 255	FAN MOTOR CAPACITOR	3.5μF X 440V	2	2	2	2		C3, C4			
30	S70 E04 716	TERMINAL BLOCK	3P(S1,S2,S3)	1	1	1	1		TB2			
31	S70 E10 716	TERMINAL BLOCK	4P(L1,L2,L3,N)	1	1	1	1		TB1			
32	S70 334 708	CONTACTOR	MSO-N20	1	1	1	1		51C, 52C			
33	S70 E06 408	HEAT EXCHANGER		1	1	1	1					
34	S70 30L 450	STRAINER	#50-9.52	1	1	1	1					
35	S70 516 495	ACOCSTIC COMPRESSOR CAP		1	1	1	1					
36	S70 516 496	ACOCSTIC COMPRESSOR BASE		1	1	1	1					
37	S70 516 497	ACOCSTIC COMPRESSOR JACKET		1	1	1	1					

**FUNCTIONAL PARTS**  
**PUH-P6YGAA<sub>2</sub>.UK**  
**PU-P6YGAA<sub>2</sub>.UK**



Part number that is circled is not shown in the figure.

No.	Part No.	Part Name	Specification	Q'ty/set		Remarks	Wiring Diagram Symbol	Recommended Q'ty	Price	
				PUH-P6 YGAA2.UK	PU-P6 YGAA2.UK				Unit	Amount
1	S70 E03 763	OUTDOOR FAN MOTOR	N026P72MT	1	1		MF			
2	S70 30L 115	PROPELLER FAN 4		2	2					
3	S70 30L 097	DOME CAP NUT	M8	2	2					
4	S70 E07 408	HEAT EXCHANGER (UNDER)		1	1					
5	S70 E04 763	OUTDOOR FAN MOTOR	N02A672MT	1	1		MF			
6	S70 E19 202	THERMISTOR (DISCHARGE)		1	1		TH4			
7	S70 E06 401	LINEAR EXPANSION VALVE		1	1		LEV			
8	S70 H60 400	COMPRESSOR	BE96YADMT	1	1		MC			
9	S70 300 418	STOP VALVE (LIQUID)	3/8"	1	1					
10	S70 E05 411	BALL VALVE	3/4"	1	1					
11	S70 H40 236	CRANKCASE HEATER	240V / 38W	1	1		CH			
12	S70 E17 202	THERMISTOR ( LIQUID , CONDENSER / EVAPORATOR )		1	1		TH3, TH6			
13	S70 42L 450	STRAINER	#50-19.1	1	1					
14	S70 42H 467	MUFFLER		1						
15	S70 E00 208	HIGH PRESSURE SWITCH	OFF:3.3MPa ON :2.6MPa	1	1		63H			
16	S70 E01 413	CHARGE PLUG		1	1					
17	S70 251 242	4-WAY VALVE SOLENOID COIL		1			21S4			
18	S70 E02 403	4-WAY VALVE (REVERSING)		1						
19	S70 E05 425	CAPILLARY TUBE	φ4.0 X φ3.0 X 200mm	1	1					
20	S70 E06 425	CAPILLARY TUBE	φ4.0 X φ3.0 X 200mm	1	1					
21	S70 E04 425	CAPILLARY TUBE	φ4.0 X φ3.0 X 450mm	1						
22	S70 A14 428	BYPASS VALVE		1						
23	S70 351 242	BYPASS VALVE SOLENOID COIL		1			SV			
24	S70 H20 209	LOW PRESSURE SWITCH	OFF:-0.03MPa ON :0.05MPa	1	1		63L			
25	S70 E06 440	ACCUMULATOR		1	1					
26	S70 E00 413	CHARGE PLUG		1	1					
27	S70 33H 315	OUTDOOR CONTROLLER BOARD		1	1		O.B			
28	S70 520 239	FUSE	6.3A	4	4	(PART OF BOARD)	FUSE			
29	S70 17T 255	FAN MOTOR CAPACITOR	3.5μF X 440V	2	2		C3, C4			
30	S70 E04 716	TERMINAL BLOCK	3P(S1,S2,S3)	1	1		TB2			
31	S70 E10 716	TERMINAL BLOCK	4P(L1,L2,L3,N)	1	1		TB1			
32	S70 334 708	CONTACTOR	MSO-N20	1	1		51C, 52C			
33	S70 H12 408	HEAT EXCHANGER (TOP)		1	1					
34	S70 30L 450	STRAINER	#50-9.52	1	1					
35	S70 H30 450	STRAINER ASSY		1	1					

**14-1. DRAIN SOCKET**

Part No.	PAC-SF37DS-E
Applied models	PU/PUH-P • GAA

**14-2. AIR OUTLET GUIDE**

Part No.	PAC-SF08SG-E
Applied models	PU/PUH-P • GAA

※ PU/PUH-P4, P5, P6 • GAA needs two piece.

**14-3. DRAIN PAN**

Part No.	PAC-SF16DP-E	PAC-SF17DP-E
Applied models	PU/PUH-P1, P1.6, P2, P2.5, P3, P4 • GAA	PU/PUH-P5, P6YGAA

**14-4. A / M-NET ADAPTER**

Part No.	PAC-SF48MA-E
Applied models	PU/PUH-P • GAA



HEAD OFFICE : MITSUBISHI DENKI BLDG., 2-2-3, MARUNOUCHI, CHIYODA-KU TOKYO 100-8310, JAPAN