

TECHNICAL & SERVICE MANUAL

Series PCA Ceiling Suspended R407C

Indoor unit
[Model names]

PCA-P3HA

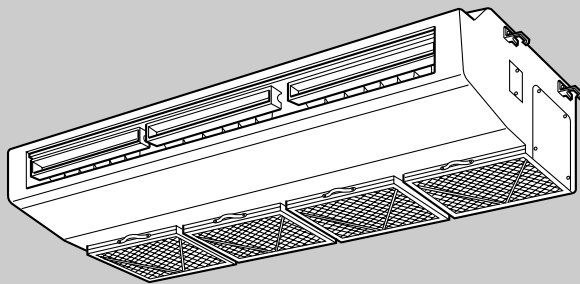
PCA-P5HA

[Service Ref.]

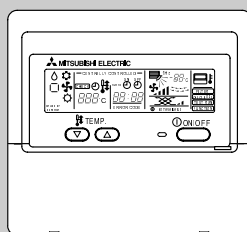
PCA-P3HA

PCA-P5HA

- Refer to the OCT03 REVISED EDITION-E as regarding control relation.
- This manual does not cover outdoor units. When serving them, please refer to the service manual No.OC261 REVISED EDITION-B and this manual in a set.



INDOOR UNIT

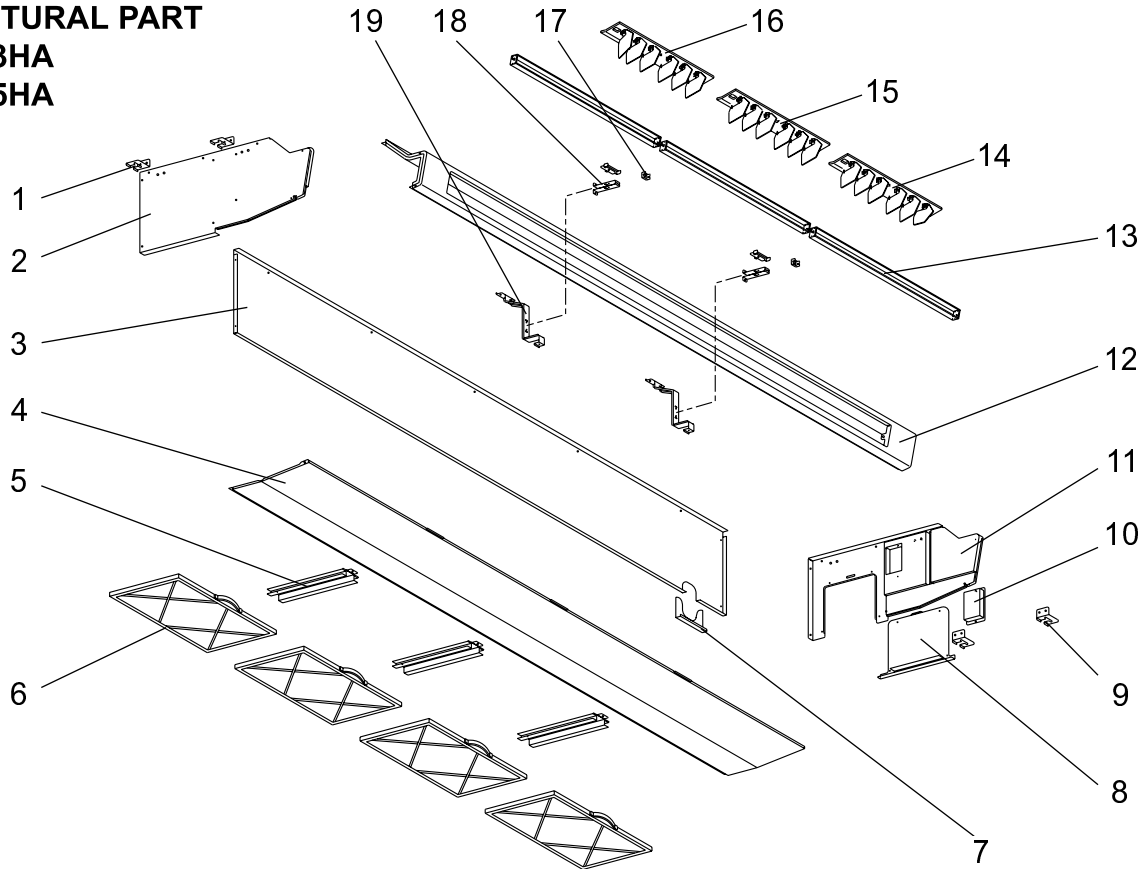


REMOTE CONTROLLER

CONTENTS

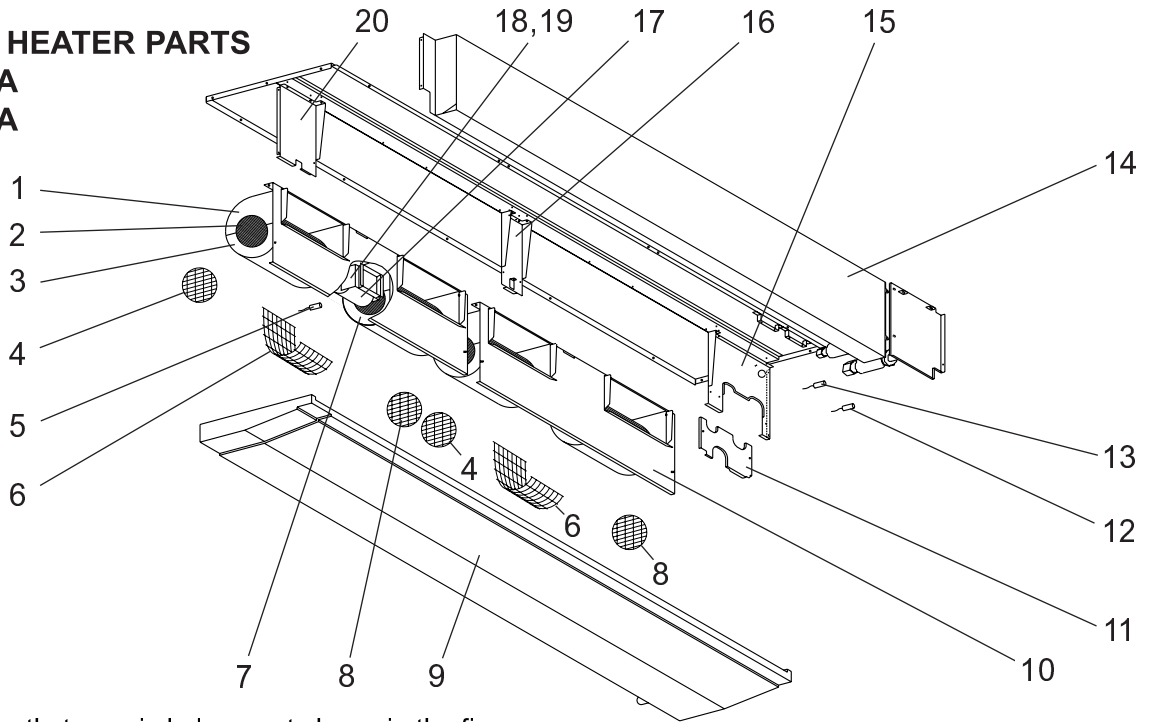
1. SAFETY PRECAUTION	2
2. PART NAMES AND FUNCTIONS	4
3. SPECIFICATIONS	6
4. DATA	10
5. OUTLINES AND DIMENSIONS	21
6. WIRING DIAGRAM	23
7. REFRIGERANT SYSTEM DIAGRAM	24
8. TROUBLESHOOTING	25
9. DISASSEMBLY PROCEDURE	26
10. PARTS LIST	30
11. OPTIONAL PARTS	33

STRUCTURAL PART
PCA-P3HA
PCA-P5HA



No.	Parts No.	Parts Name	Specifications	Q'ty / set		Remarks (Drawing No.)	Wiring Diagram Symbol	Recom- mended Q'ty	Price	
				PCA-					Unit	Amount
				P3HA	P5HA					
1	R01 13N 809	LEG-L		2	2					
2	R01 13N 662	SIDE PLATE-L		1	1					
3	T7W E02 676	REAR PANER		1						
	T7W E03 676	REAR PANER			1					
4	R01 12N 669	UNDER PANEL		1						
	R01 13N 669	UNDER PANEL			1					
5	R01 13N 503	FILTER RAIL		2	3					
6	R01 E05 500	OIL FILTER		3	4					
7	—	DRAIN HOSE SUPPORT		1	1	(BG00K145G02)				
8	R01 13N 667	SIDE COVER		1	1					
9	R01 13N 808	LEG-R		2	2					
10	R01 13N 668	SERVICE PANEL		1	1					
11	R01 13N 661	SIDE PLATE-R		1	1					
12	T7W E02 651	FRONT PANEL		1						
	T7W E03 651	FRONT PANEL			1					
13	R01 12N 002	VANE ASSY		2						
	R01 13N 002	VANE ASSY			3					
14	R01 13N 086	GUIDE VANE ASSY-6L		1	1					
15	R01 13N 087	GUIDE VANE ASSY-6C			1					
16	R01 13N 085	GUIDE VANE ASSY-6R		1	1					
17	R01 13N 533	VANE HOLDER		1	1					
18	—	VANE SUPPORT		1	2	(BG00K146G02)				
19	—	FRONT SUPPORT		1	2	(BG00T773G01)				

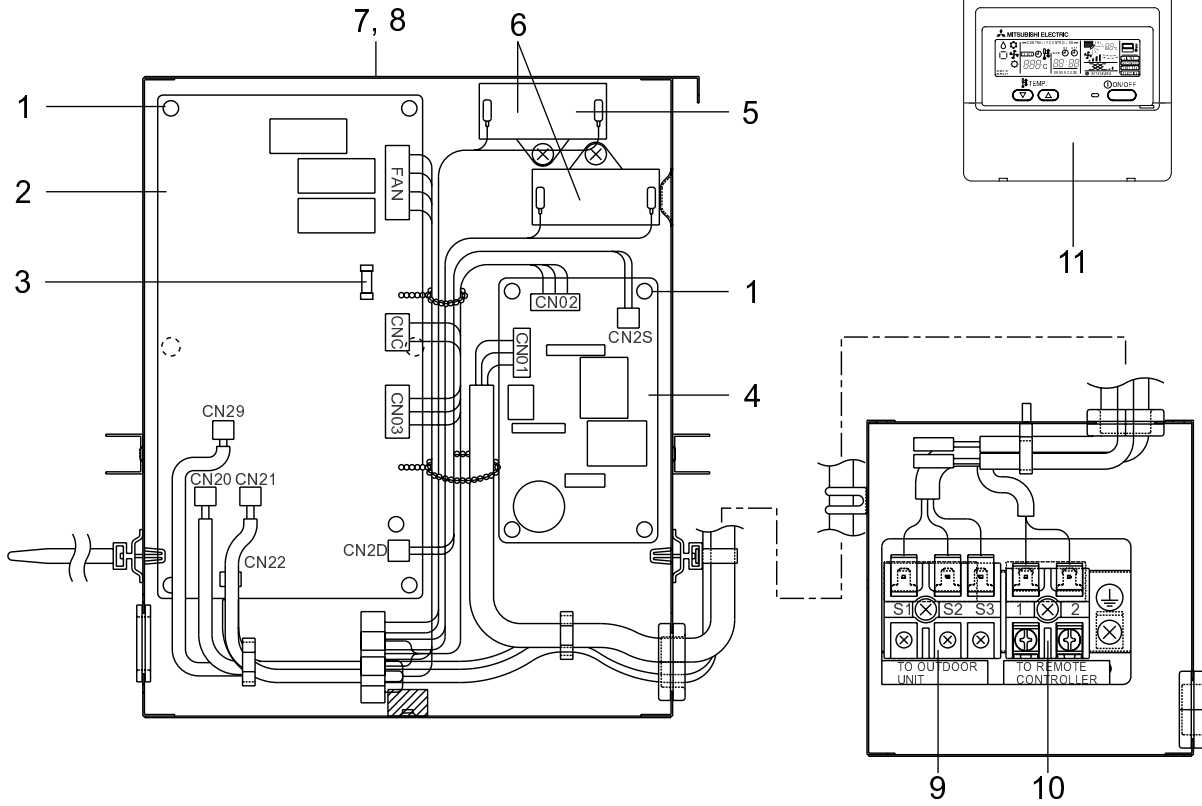
FAN AND HEATER PARTS
PCA-P3HA
PCA-P5HA



Part numbers that are circled are not shown in the figure.

No.	Parts No.	Parts Name	Specifications	Q'ty / set		Remarks (Drawing No.)	Wiring Diagram Symbol	Recom- mended Q'ty	Price	
				PCA-					Unit	Amount
				P3HA	P5HA					
1	R01 12N 110	T. CASING ASSY		2						
	R01 13N 110	T. CASING ASSY			4					
2	R01 12N 114	SIROCO FAN		2						
	R01 13N 114	SIROCO FAN			4					
3	T7W E02 111	UNDER CASING-L		1						
	T7W E03 111	UNDER CASING-L			2					
4	T7W E12 675	FAN GUARD-S		1	2					
5	R01 E51 202	ROOM TEMPERATUR TERMISTOR		1	1		TH1			
	T7W E14 675	FAN GUARD-L		1						
6	T7W E13 675	FAN GUARD-L			2					
	T7W E00 111	UNDER CASING-R		1						
7	T7W E01 111	UNDER CASING-R			2					
	T7W E11 675	FAN GUARD-S		1	2					
8	R01 12N 529	DRAINPAN ASSY		1						
	R01 13N 529	DRAINPAN ASSY			1					
10	—	FAN PLATE		1		(BG00N756G15)				
	—	FAN PLATE			2	(BG00N756G14)				
11	—	PIPE SUPPORT		1	1	(BG02T500H04)				
12	R01 13N 202	PIPE TEMPERATURE TERMISTOR		1	1		TH2			
13	R01 E63 202	CONDENSER / EVAPORATOR TEMPERATURE TERMISTOR		1	1		TH5			
14	R01 H04 480	HEAT EXCHANGER		1						
	R01 E75 480	HEAT EXCHANGER			1					
15	—	FAN PLATE SUPPORT-R		1	1	(BG00N893G15)				
16	—	FAN PLATE SUPPORT-C		1	1	(BG00N893G14)				
17	T7W E20 762	FAN MOTOR	PA6V40-CB	1			MF1			
	T7W E21 762	FAN MOTOR	PA4V80-CA		2		MF1,2			
18	R01 45K 130	MOTOR LEG		1	2					
19	R01 83E 126	PIECE FOR MOTOR		1	2					
20	—	FAN PLATE SUPPORT-L		1	1	(BG00N893G13)				
21	R01 13N 521	PIPE COVER		1	1					
22	R01 13N 072	DRAIN HOSE COVER		1	1					
23	R01 811 105	RUBBER MOUNT		2	4					

ELECTRICAL PARTS
PCA-P3HA
PCA-P5HA



No.	Parts No.	Parts Name	Specifications	Q'ty / set		Remarks (Drawing No.)	Wiring Diagram Symbol	Recom- mended Q'ty	Price	
				PCA-					Unit	Amount
				P3HA	P5HA					
1	R01 18J 054	SUPPORT		9	9					
2	T7W E30 310	CONTROLLER BOARD		1	1		I.B			
3	R01 E00 239	FUSE	250V 4A	1	1					
4	T7W E01 313	POWER BOARD		1	1		P.B			
5	R01 A00 255	RUN CAPACITOR		1			C1			
6	R01 576 255	RUN CAPACITOR			2		C1,C2			
7	—	CONTROL BOX COVER		1	1	(BG02N713H05)				
8	—	CONTROL BOX		1	1	(BG00T759G12)				
9	R01 17J 246	TERMINAL BLOCK	3P(S1, S2, S3)	1	1		TB4			
10	R01 556 246	TERMINAL BLOCK	2P(1, 2)	1	1		TB5			
11	—	REMOTE CONTROLLER		1	1		R.B			

1. TIMER

Part No.	PAC-SC32PTA (with set back function)
Model Name	Program timer

1-1. Program timer specifications

Part name	Program timer
Parts No.	PAC-SC32PTA
Exterior dimensions (inch)	5-4/32X4-23/32X23/32 (130X120X18mm)
Installation	Wall mount
Type of clock	Quartz
Clock accuracy	±50 second / month at 25°C
Display-Time	Liquid crystal display
-Week	Liquid crystal display
-Timer setting unit	Liquid crystal display
Program cycle	24 hours
Timer setting unit	30 minutes
No. of set points	48 / day
Power rating	5V DC ±5% (Supplied by Remote Controller)

1-2. Feature of program timer

(1) Daily timer function

Daily timer can be set in 30 minutes units for up to 24 hours.
Each unit can be set for unit ON, unit OFF, or setback operation.

(2) Setback operation

Set back operation is useful for reducing running costs

e.g. At a hotel with a 24-hour system

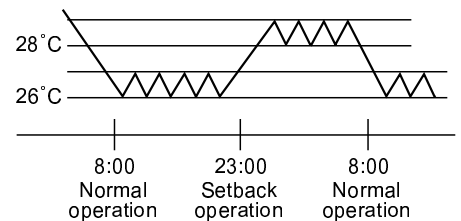
8:00~23:00 Cooling operation with set temperature at 26°C

23:00~8:00 Setback operation with 2 degrees of setback

As shown in the chart on the right, the set temperature rises 2 degrees automatically during the setback operation. When the setback operation ends, normal operation will begin.

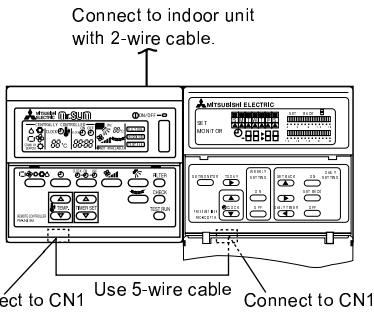
(3) Weekly timer function

Daily timer function can apply to each day of the week.



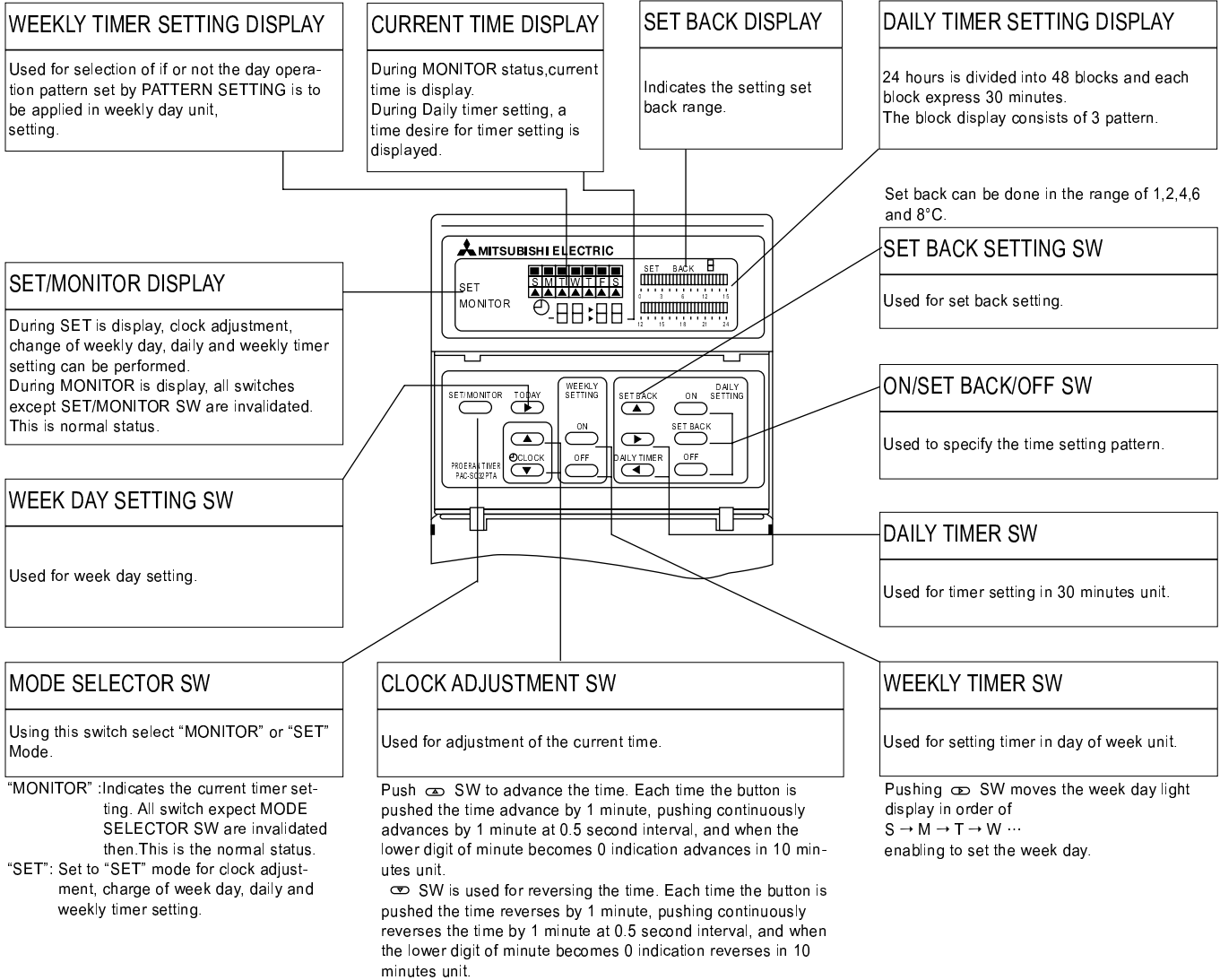
1-3. How to connect program timer

- (1) Install the program timer next to the remote controller the same way as the remote controller is installed.
- (2) Connect the program timer and the remote controller with a 5-wire cable as shown in the figure below



NOTE: While the program timer is connected to the remote controller, the 24hour ON/OFF timer on the remote controller will not operate.

1-4. Names and functions <PAC-SC32PTA>



2. Duct flange for fresh air

Part No.	PAC-SF28OF-E
Applied Service Ref.	PCA-P3HA, PCA-P5HA

3. Filter element

Part No.	PAC-SG38KF-E
Applied Service Ref.	PCA-P3HA, PCA-P5HA

4. Decoration cover (Front + Suspending bracket cover)

Part No.	PAC-SF81KC-E	PAC-SF82KC-E
Applied Service Ref.	PCA-P3HA	PCA-P5HA

5. Remote sensor

Part No.	PAC-SE41TS-E
Applied Service Ref.	PCA-P3HA, PCA-P5HA

6. Remote operation adapter

Part No.	PAC-SF40RM-E
Applied Service Ref.	PCA-P3HA, PCA-P5HA

7. Remote ON/OFF adapter

Part No.	PAC-SF55RA-E
Applied Service Ref.	PCA-P3HA, PCA-P5HA

Mr. SLIM™

 **MITSUBISHI ELECTRIC CORPORATION**

HEAD OFFICE : MITSUBISHI DENKI BLDG., 2-2-3, MARUNOUCHI, CHIYODA-KU TOKYO 100-8310, JAPAN
