

TECHNICAL & SERVICE MANUAL

Series PCA Ceiling Suspended R407C/R410A

**Indoor unit
[Model names]**

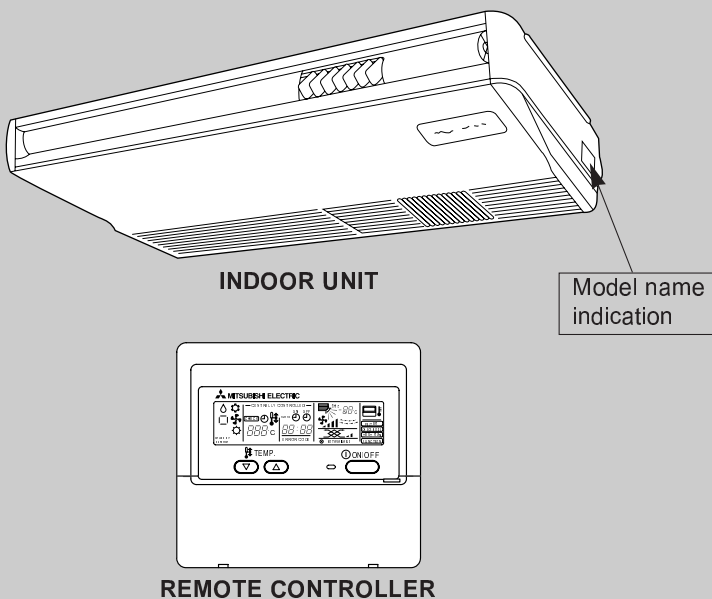
PCA-RP2GA
 PCA-RP2.5GA
 PCA-RP3GA
 PCA-RP4GA
 PCA-RP5GA
 PCA-RP6GA

[Service Ref.]

**PCA-RP2GA
 PCA-RP2.5GA
 PCA-RP3GA
 PCA-RP4GA
 PCA-RP5GA
 PCA-RP6GA**

NOTE:

- This manual does not cover outdoor units. When serving them, please refer to the service manual No.OC261 REVISED EDITION-B, OC285, OC294 REVISED EDITION-B, OC298 and this manual in a set.



CONTENTS

1. COMBINATION OF INDOOR AND OUTDOOR UNITS	2
2. SAFETY PRECAUTION	3
3. PART NAMES AND FUNCTIONS	7
4. SPECIFICATIONS	9
5. DATA	18
6. OUTLINES AND DIMENSIONS	50
7. WIRING DIAGRAM	54
8. REFRIGERANT SYSTEM DIAGRAM	55
9. TROUBLESHOOTING	56
10. DISASSEMBLY PROCEDURE	66
11. PARTS LIST	71
12. OPTIONAL PARTS	78

ELECTRICAL PARTS

PCA-RP2GA

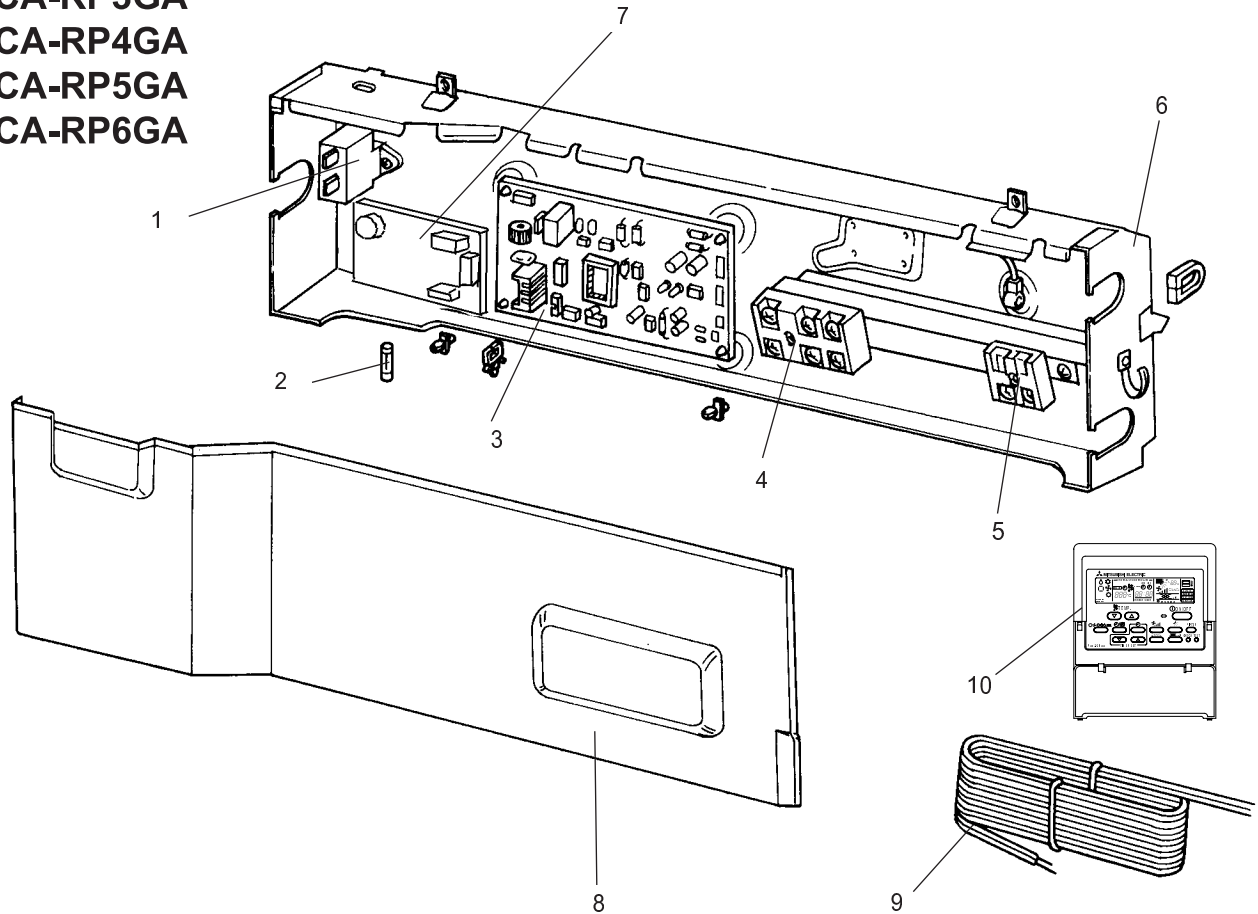
PCA-RP2.5GA

PCA-RP3GA

PCA-RP4GA

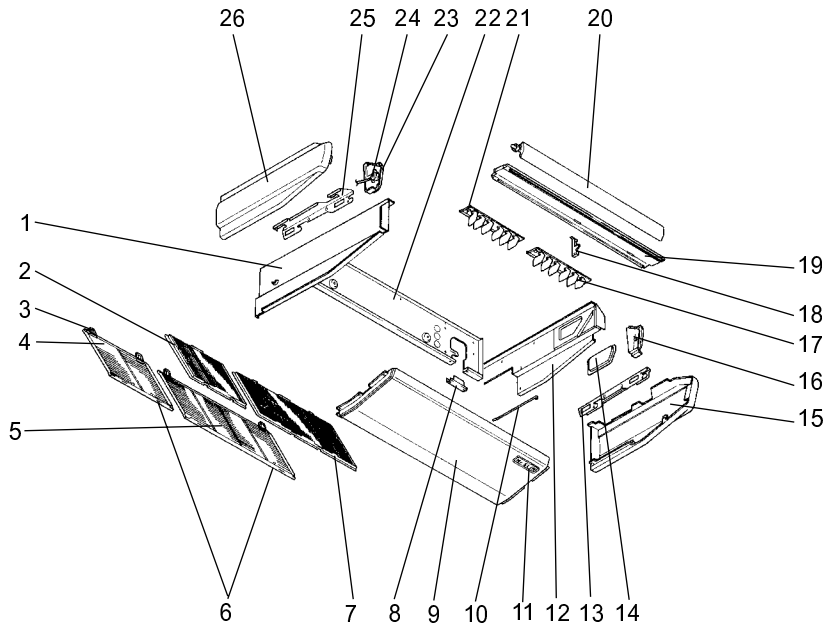
PCA-RP5GA

PCA-RP6GA



No.	Parts No.	Parts Name	Specifications	Q.ty/set				Remarks (Drawing No.)	Wiring Diagram Symbol	Recom- mended Q'ty	Price	
				PCA-RP							Unit	Amount
				2GA	2.5GA 3GA	4GA	5GA 6GA					
1	R01 30L 255	CAPACITOR	3 μ F 440V	1					C1			
	T7W 39J 255	CAPACITOR	4 μ F 440V		1	1			C1			
	R01 A13 255	CAPACITOR	6 μ F 440V				1		C1			
2	R01 E00 239	FUSE	250V 4A	1	1	1	1					
3	T7W E36 310	INDOOR CONTROLLER BOARD		1	1	1	1		I.B			
4	T7W E13 716	TERMINAL BLOCK	3P(S1,S2,S3)	1	1	1	1		TB4			
5	T7W 512 716	TERMINAL BLOCK	2P(1,2)	1	1	1	1		TB5			
6	—	CONTROL BOX		1	1	1	1	(BG00N015G25)				
7	T7W E01 313	POWER BOARD		1	1	1	1		P.B			
8	—	CONTROL COVER		1				(BG02A804G20)				
	—	CONTROL COVER			1		1	(BG02A804G21)				
	—	CONTROL COVER				1		(BG02A804G22)				
9	T7W A00 305	REMOTE CONTROLLER CORD		1	1	1	1					
10	T7W E06 713	REMOTE CONTROLLER	PAR-20MAA	1	1	1	1					

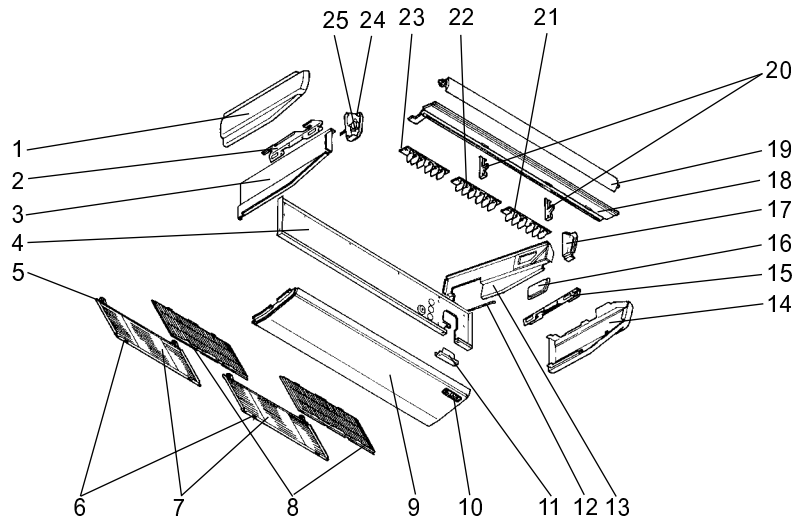
STRUCTURAL PART PCA-RP2GA



Part number that is circled is not shown in the figure.

No.	Parts No.	Parts Name	Specifications	Q'ty/set	Remarks (Drawing No.)	Wiring Diagram Symbol	Recom- mended Q'ty	Price	
				PCA-RP2GA				Unit	Amount
1	R01 57N 666	S.PLATE-L		1					
2	R01 A15 500	L.L FILTER		1					
3	R01 17J 061	GRILLE HINGE		4					
4	R01 18J 691	GRILLE ASSY		1					
5	R01 17J 691	GRILLE ASSY		1					
6	R01 17J 054	GRILLE CATCH		4					
7	R01 A14 500	L.L FILTER		1					
8	—	REAR SUPPORT		1	(BG02H454K01)				
9	R01 17J 669	UNDER PANEL		1					
10	—	BEAM(GA)		2	(BG17H464H08)				
11	T7W E01 070	W.BOARD CASE		1					
12	R01 18J 665	S.PLATE-R		1					
13	R01 17J 808	RIGHT LEG (R)		1					
14	R01 17J 668	SERVICE PANEL		1					
15	R01 17J 661	RIGHT SIDE PANEL		1					
16	R01 17J 067	RIGHT SIDE BOX		1					
17	R01 37J 085	G.V ASSY-6R		1					
18	R01 E00 033	VANE SUPPORT		1					
19	R01 17J 651	FRONT PANEL		1					
20	R01 17J 002	AUTO VANE		1					
21	R01 37J 086	G.V ASSY-6L		1					
22	R01 A14 676	REAR PANEL		1					
23	R01 17J 068	LEFT SIDE BOX		1					
24	R01 E03 223	VANE MOTOR		1		MV			
25	R01 17J 809	LEFT LEG (L)		1					
26	R01 17J 662	LEFT SIDE PANEL		1					
27	R01 17J 523	JOINT SOCKET		1					

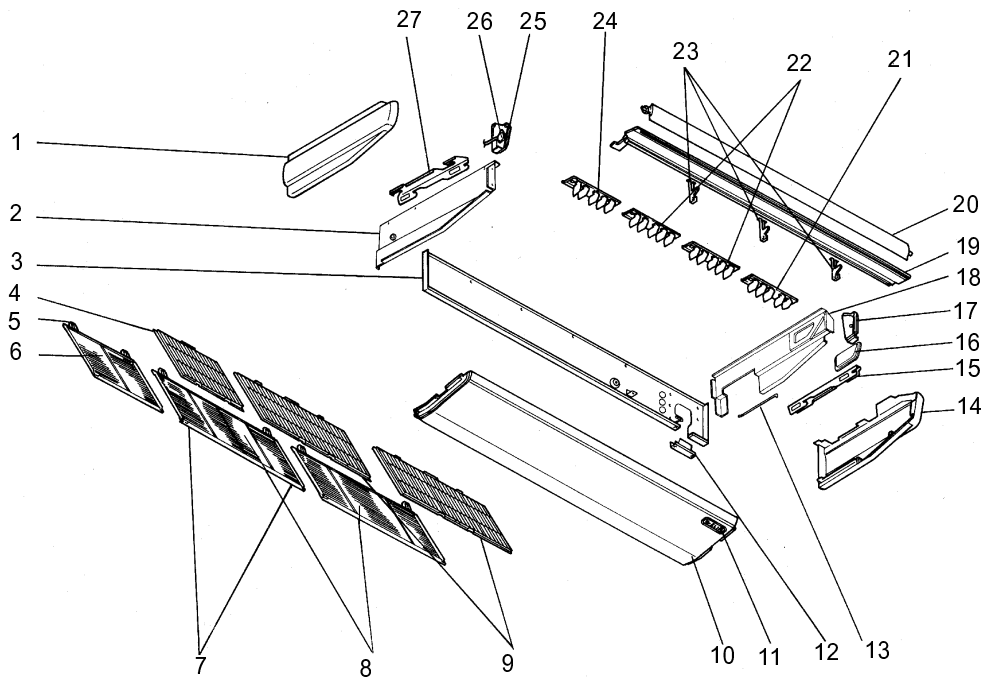
STRUCTURAL PART
PCA-RP2.5GA
PCA-RP3GA
PCA-RP4GA



Part number that is circled is not show in the figure.

No.	Parts No.	Parts Name	Specifications	Q'ty/set		Remarks (Drawing No.)	Wiring Diagram Symbol	Recom- mended Q'ty	Price	
				PCA-RP					Unit	Amount
				2.5GA 3GA	4GA					
1	R01 17J 662	LEFT SIDE PANEL		1						
	R01 35J 662	LEFT SIDE PANEL			1					
2	R01 17J 809	LEFT LEG		1	1					
3	R01 57N 666	S.PLATE-L		1						
	R01 35J 666	S.PLATE-L			1					
4	R01 A15 676	REAR PANEL		1						
	R01 A16 676	REAR PANEL			1					
5	R01 17J 061	GRILLE HINGE		4	4					
6	R01 17J 054	GRILLE CATCH		4	4					
7	R01 17J 691	GRILLE ASSY		2	2					
8	R01 A14 500	L.L FILTER		2	2					
9	R01 29J 669	UNDER PANEL		1	1					
10	T7W E01 070	W.BOARD CASE		1	1					
11	—	REAR SUPPORT		1	1	(BG02H454K01)				
12	—	BEAM (GA)		2	2	(BG17H464H08)				
13	R01 18J 665	S.PLATE-R		1						
	R01 E00 665	S.PLATE-R			1					
14	R01 17J 661	RIGHT SIDE PANEL		1						
	R01 35J 661	RIGHT SIDE PANEL			1					
15	R01 17J 808	RIGHT LEG		1	1					
16	R01 17J 668	SERVICE PANEL		1						
	R01 18J 668	SERVICE PANEL			1					
17	R01 17J 067	RIGHT SIDE BOX		1						
	R01 35J 067	RIGHT SIDE BOX			1					
18	R01 29J 651	FRONT PANEL		1						
	R01 36J 651	FRONT PANEL			1					
19	R01 29J 002	AUTO VANE		1						
	R01 E03 002	AUTO VANE			1					
20	R01 E00 033	VANE SUPPORT		2						
	R01 E01 033	VANE SUPPORT			2					
21	R01 37J 085	G.V ASSY-6R		1	1					
22	R01 37J 087	G.V ASSY-6C		1	1					
23	R01 37J 086	G.V ASSY-6L		1	1					
24	R01 17J 068	LEFT SIDE BOX		1						
	R01 E00 068	LEFT SIDE BOX			1					
25	R01 29J 223	VANE MOTOR		1			MV			
	R01 35J 223	VANE MOTOR			1		MV			
26	R01 17J 523	JOINT SOCKET		1	1					

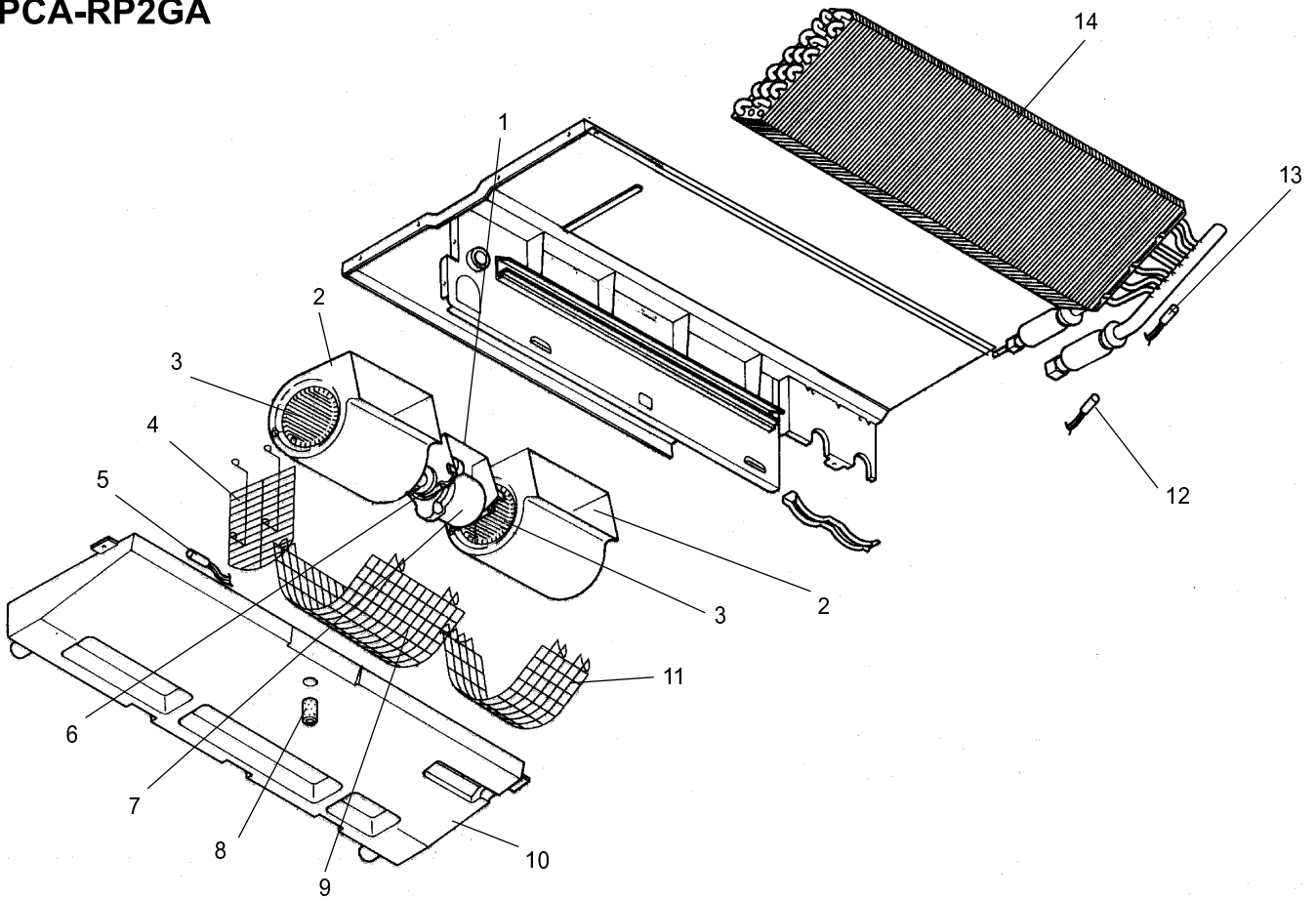
STRUCTURAL PART
PCA-RP5GA
PCA-RP6GA



Part number that is circled is not shown in the figure.

No.	Parts No.	Parts Name	Specifications	Q'ty/set		Remarks (Drawing No.)	Wiring Diagram Symbol	Recom- mended Q'ty	Price	
				PCA-RP5GA	PCA-RP6GA				Unit	Amount
1	R01 35J 662	LEFT SIDE PANEL		1						
2	R01 35J 666	S.PLATE-L		1						
3	R01 A17 676	REAR PANEL		1						
4	R01 A15 500	L.L FILTER		1						
5	R01 17J 061	GRILLE HINGE		6						
6	R01 18J 691	GRILLE ASSY		1						
7	R01 17J 054	GRILLE CATCH		6						
8	R01 17J 691	GRILLE ASSY		2						
9	R01 A14 500	L.L FILTER		2						
10	R01 41J 669	UNDER PANEL		1						
11	T7W E01 070	W.BOARD CASE		1						
12	—	REAR SUPPORT		1	(BG02H454K01)					
13	—	BEAM(GA)		3	(BG17H464H08)					
14	R01 35J 661	RIGHT SIDE PANEL		1						
15	R01 17J 808	RIGHT LEG		1						
16	R01 18J 668	SERVICE PANEL		1						
17	R01 35J 067	RIGHT SIDE BOX		1						
18	R01 E00 665	S.PLATE-R		1						
19	R01 41J 651	FRONT PANEL		1						
20	R01 E04 002	AUTO VANE		1						
21	R01 41J 085	G.V ASSY-5R		1						
22	R01 43J 087	G.V ASSY-5C		2						
23	R01 E01 033	VANE SUPPORT		3						
24	R01 42J 086	G.V ASSY-5L		1						
25	R01 E00 068	LEFT SIDE BOX		1						
26	R01 35J 223	VANE MOTOR		1			MV			
27	R01 17J 809	LEFT LEG		1						
28	R01 17J 523	JOINT SOCKET		1						

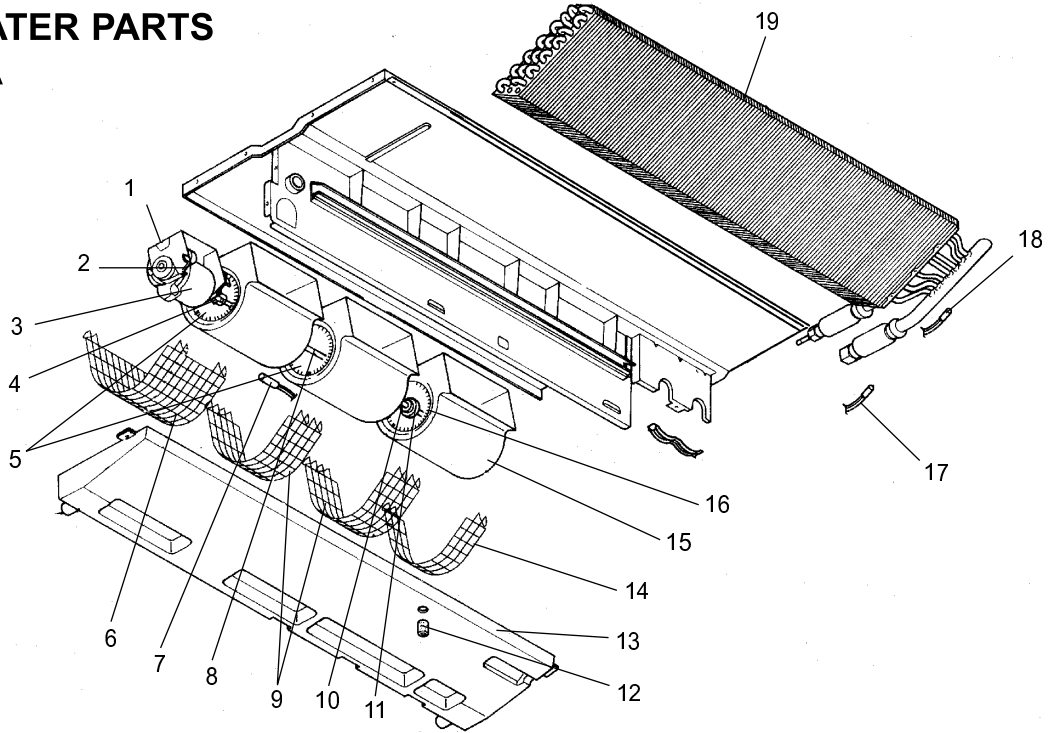
FAN AND HEATER PARTS PCA-RP2GA



Part number that is circled is not shown in the figure.

No.	Parts No.	Parts Name	Specifications	Q'ty/set	Remarks (Drawing No.)	Wiring Diagram Symbol	Recom- mended Q'ty	Price	
				PCA-RP2GA				Unit	Amount
1	R01 17J 130	MOTOR LEG		1					
2	T7W B06 110	CASING		2					
3	R01 17J 114	SIROCCO FAN		2					
4	T7W 19J 675	FAN GUARD		1					
5	R01 E26 202	ROOM TEMPERATURE THERMISTOR		1		TH1			
6	R01 43E 126	PIECE (MOTOR)	2pcs/set	1					
7	T7W 23J 762	FAN MOTOR	D09B4P54MS	1		MF			
8	R01 17J 524	DRAIN PLUG		1					
9	T7W 17J 675	FAN GUARD		1					
10	R01 A14 529	DRAIN PAN ASSY		1					
11	T7W 18J 675	FAN GUARD		1					
12	R01 17J 202	LIQUID PIPE TEMPERATURE THERMISTOR		1		TH2			
13	T7W E08 202	CONDENSER/ EVAPORTOR TEMPERATURE THERMISTOR		1		TH5			
14	T7W E51 480	HEAT EXCHANGER		1					
15	T7W E00 072	DRAIN HOSE COVER		1					

FAN AND HEATER PARTS
PCA-RP2.5GA
PCA-RP3GA
PCA-RP4GA



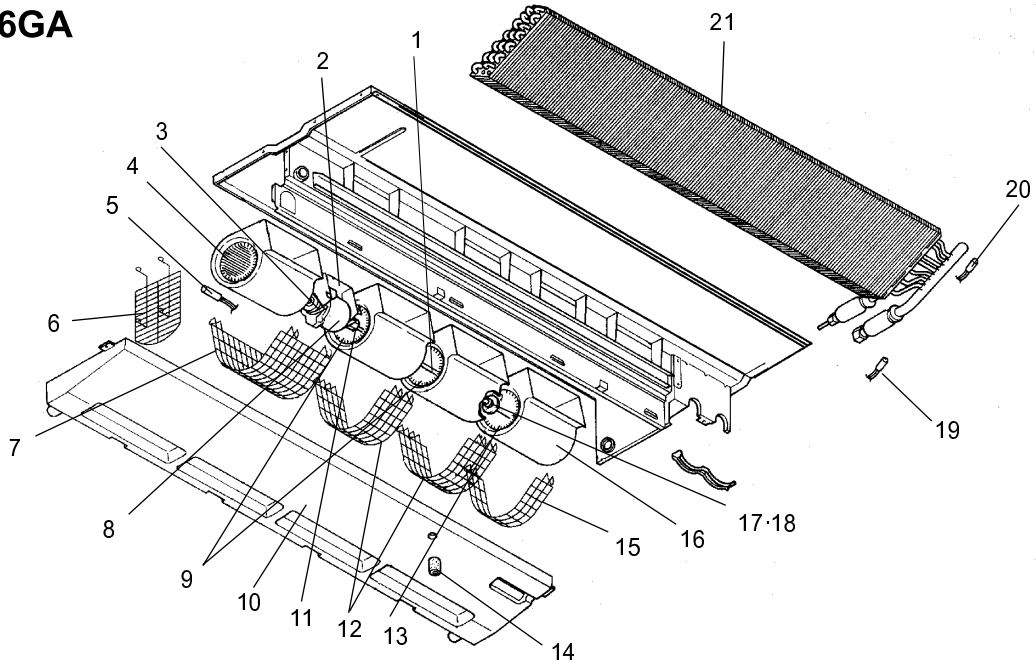
Part number that is circled is not shown in the figure.

No.	Parts No.	Parts Name	Specifications	Q'ty/set		Remarks (Drawing No.)	Wiring Diagram Symbol	Recom- mended Q'ty	Price	
				PCA-RP					Unit	Amount
				2.5GA 3GA	4GA					
1	R01 29J 130	MOTOR LEG		1						
	R01 35J 130	MOTOR LEG			1					
2	R01 43E 126	PIECE(MOTOR)	2pcs/set	1	1					
3	T7W 30J 762	FAN MOTOR	D09C4P70MS	1			MF			
	T7W 39J 762	FAN MOTOR	D10B4P90MS		1		MF			
4	R01 700 116	FAN JOINT		1	1					
5	R01 29J 114	SIROCCO FAN		2						
	R01 35J 114	SIROCCO FAN			2					
6	T7W 20J 675	FAN GUARD		1						
	T7W 22J 675	FAN GUARD			1					
7	R01 E26 202	ROOM TEMPERATURE THERMISTOR		1	1		TH1			
8	R01 29J 100	SHAFT		1	1					
9	T7W 21J 675	FAN GUARD		2						
	T7W 23J 675	FAN GUARD			2					
10	R01 E00 103	SLEEVE BEARING		1	1					
11	R01 29J 145	BEARING SUPPORT		1						
	R01 35J 145	BEARING SUPPORT			1					
12	R01 17J 524	DRAIN PLUG		1	1					
13	R01 A15 529	DRAIN PAN ASSY		1						
	R01 A16 529	DRAIN PAN ASSY			1					
14	T7W 18J 675	FAN GUARD		1						
	T7W 24J 675	FAN GUARD			1					
15	T7W B06 110	CASING		3						
	T7W B07 110	CASING			3					
16	R01 33J 114	SIROCCO FAN		1						
	R01 41J 114	SIROCCO FAN			1					
17	R01 17J 202	LIQUID PIPE TEMPERATURE THERMISTOR		1	1		TH2			
18	T7W E08 202	CONDENSER / EVAPORATOR TEMPERATURE THERMISTOR		1	1		TH5			
19	R01 H00 480	HEAT EXCHANGER		1						
	T7W E52 480	HEAT EXCHANGER			1					
20	T7W E00 072	DRAIN HOSE COVER		1	1					

FAN AND HEATER PARTS

PCA-RP5GA

PCA-RP6GA



Part number that is circled is not shown in the figure.

No.	Parts No.	Parts Name	Specifications	Q'ty/set		Remarks (Drawing No.)	Wiring Diagram Symbol	Recom- mended Q'ty	Price	
				PCA-RP 5GA	6GA				Unit	Amount
1	R01 29J 100	SHAFT		1	1					
2	R01 41J 130	MOTOR LEG		1	1					
3	R01 43E 126	PIECE (MOTOR)	2pcs/set	1	1					
4	R01 41J 114	SIROCCO FAN		1	1					
5	R01 E26 202	ROOM TEMPERATURE THERMISTOR		1	1		TH1			
6	T7W 26J 675	FAN GUARD		1	1					
7	T7W 25J 675	FAN GUARD		1	1					
8	T7W 43J 762	FAN MOTOR	D10B4P150MS	1	1		MF			
9	R01 35J 114	SIROCCO FAN		2	2					
10	R01 A17 529	DRAIN PAN ASSY		1	1					
11	R01 700 116	FAN JOINT		1	1					
12	T7W 23J 675	FAN GUARD		2	2					
13	R01 39J 114	SIROCCO FAN		1	1					
14	R01 17J 524	DRAIN PLUG		1	1					
15	T7W 24J 675	FAN GUARD		1	1					
16	T7W B07 110	CASING		4	4					
17	R01 E00 103	SLEEVE BEARING		1	1					
18	R01 35J 145	BEARING SUPPORT		1	1					
19	R01 17J 202	LIQUID PIPE TEMPERATURE THERMISTOR		1	1		TH2			
20	T7W E08 202	CONDENSER / EVAPORTOR TEMPERATURE THERMISTOR		1	1		TH5			
21	T7W E53 480	HEAT EXCHANGER		1						
	T7W E54 480	HEAT EXCHANGER			1					
(22)	T7W E00 072	DRAIN HOSE COVER		1	1					

12-1. TIMER

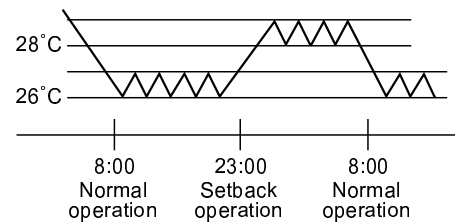
Part No.	PAC-SC32PTA (with set back function)
Model Name	Program timer

12-1-1. Program timer specifications

Part name	Program timer
Parts No.	PAC-SC32PTA
Exterior dimensions (inch)	5-4/32X4-23/32X23/32 (130X120X18mm)
Installation	Wall mount
Type of clock	Quartz
Clock accuracy	± 50 second / month at 25°C
Display-Time	Liquid crystal display
-Week	Liquid crystal display
-Timer setting unit	Liquid crystal display
Program cycle	24 hours
Timer setting unit	30 minutes
No. of set points	48 / day
Power rating	5V DC ±5% (Supplied by Remote Controller)

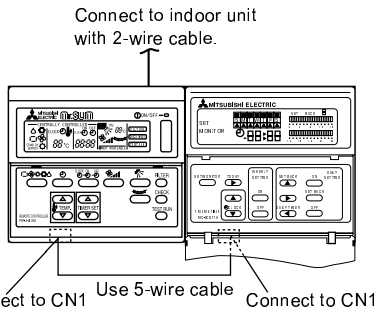
12-1-2. Feature of program timer

- (1) Daily timer function
Daily timer can be set in 30 minutes units for up to 24 hours.
Each unit can be set for unit ON, unit OFF, or setback operation.
- (2) Setback operation
Set back operation is useful for reducing running costs
e.g. At a hotel with a 24-hour system
8:00~23:00 Cooling operation with set temperature at 26°C
23:00~8:00 Setback operation with 2 degrees of setback
As shown in the chart on the right, the set temperature rises 2 degrees automatically during the setback operation. When the setback operation ends, normal operation will begin.
- (3) Weekly timer function
Daily timer function can apply to each day of the week.



12-1-3. How to connect program timer

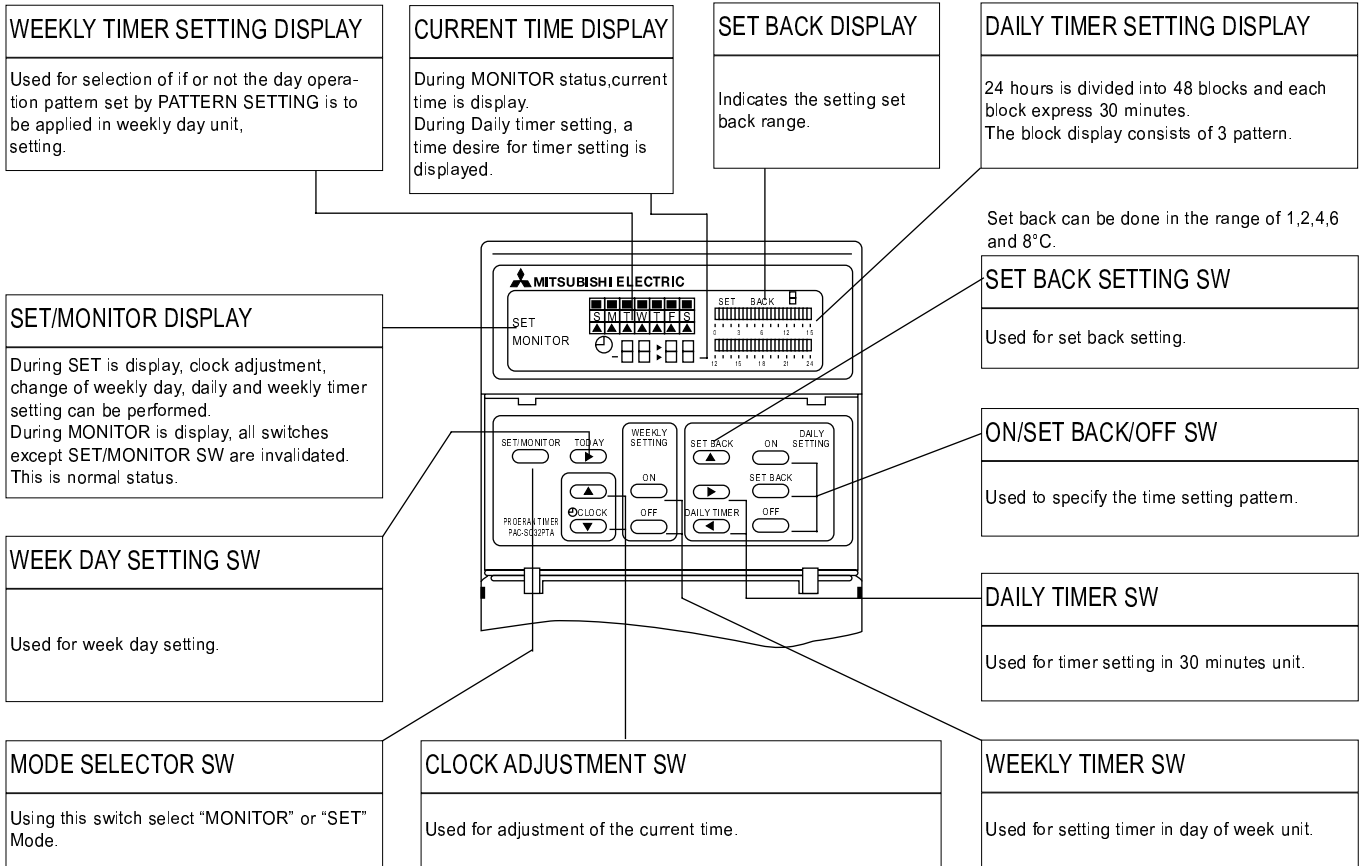
- (1) Install the program timer next to the remote controller the same way as the remote controller is installed.
- (2) Connect the program timer and the remote controller with a 5-wire cable as shown in the figure below



NOTE: While the program timer is connected to the remote controller, the 24hour ON/OFF timer on the remote controller will not operate.

12-1-4. Names and functions

<PAC-SC32PTA>



"MONITOR" :Indicates the current timer setting. All switch except MODE SELECTOR SW are invalidated then. This is the normal status.
"SET": Set to "SET" mode for clock adjustment, change of week day, daily and weekly timer setting.

Push SW to advance the time. Each time the button is pushed the time advance by 1 minute, pushing continuously advances by 1 minute at 0.5 second interval, and when the lower digit of minute becomes 0 indication advances in 10 minutes unit.
 SW is used for reversing the time. Each time the button is pushed the time reverses by 1 minute, pushing continuously reverses the time by 1 minute at 0.5 second interval, and when the lower digit of minute becomes 0 indication reverses in 10 minutes unit.

Pushing SW moves the week day light display in order of S → M → T → W ... enabling to set the week day.

12-2. Drain Lift Up Mechanism

Part No.	PAC-SE85DMA-E	PAC-SE86DMA-E
Applied Service Ref.	PCA-RP2, 2.5, 3GA	PCA-RP4, 5, 6GA

12-3. High-Efficiency Filter

Part No.	PAC-SE80KF-E	PAC-SE81KF-E	PAC-SE82KF-E
Applied Service Ref.	PCA-RP2GA	PCA-RP2.5, 3, 4GA	PCA-RP5, 6GA

12-4. Wireless Remote Controller + Wireless Adapter

Part No.	PAR-SL99A-E
Applied Service Ref.	PCA-RP2, 2.5, 3, 4, 5, 6GA

12-5. Remote Sensor

Part No.	PAC-SE41TS-E
Applied Service Ref.	PCA-RP2, 2.5, 3, 4, 5, 6GA

12-6. Remote Operation Adapter

Part No.	PAC-SF40RM-E
Applied Service Ref.	PCA-RP2, 2.5, 3, 4, 5, 6GA

12-7. Remote ON/OFF Adapter

Part No.	PAC-SF55RA-E
Applied Service Ref.	PCA-RP2, 2.5, 3, 4, 5, 6GA



HEAD OFFICE : MITSUBISHI DENKI BLDG., 2-2-3, MARUNOUCHI, CHIYODA-KU TOKYO 100-8310, JAPAN