



SPLIT-TYPE, HEAT PUMP AIR CONDITIONERS

2004

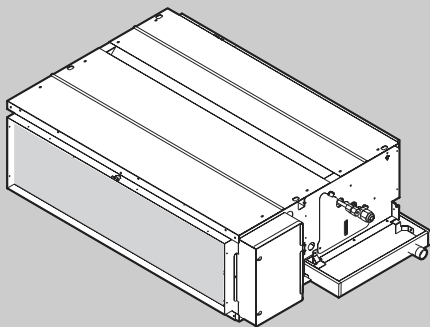
TECHNICAL & SERVICE MANUAL

Series PEAD Ceiling Concealed R407C/R410A

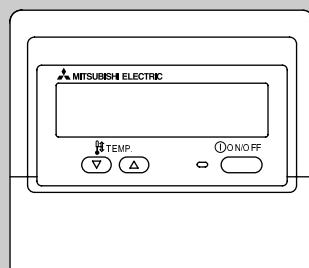
<indoor unit> Service ref.

Models PEAD-RP1.6EA
 PEAD-RP2EA
 PEAD-RP2.5EA
 PEAD-RP3EA1
 PEAD-RP4EA1
 PEAD-RP5EA1
 PEAD-RP6EA1

• Refer to the OCT04 as for control relation. This manual does not cover outdoor units.
 When servicing them, please refer to the service manual OC261 REVISED EDITION-B, OC294 REVISED EDITION-A and this manual as a set.



INDOOR UNIT



REMOTE CONTROLLER

CONTENTS

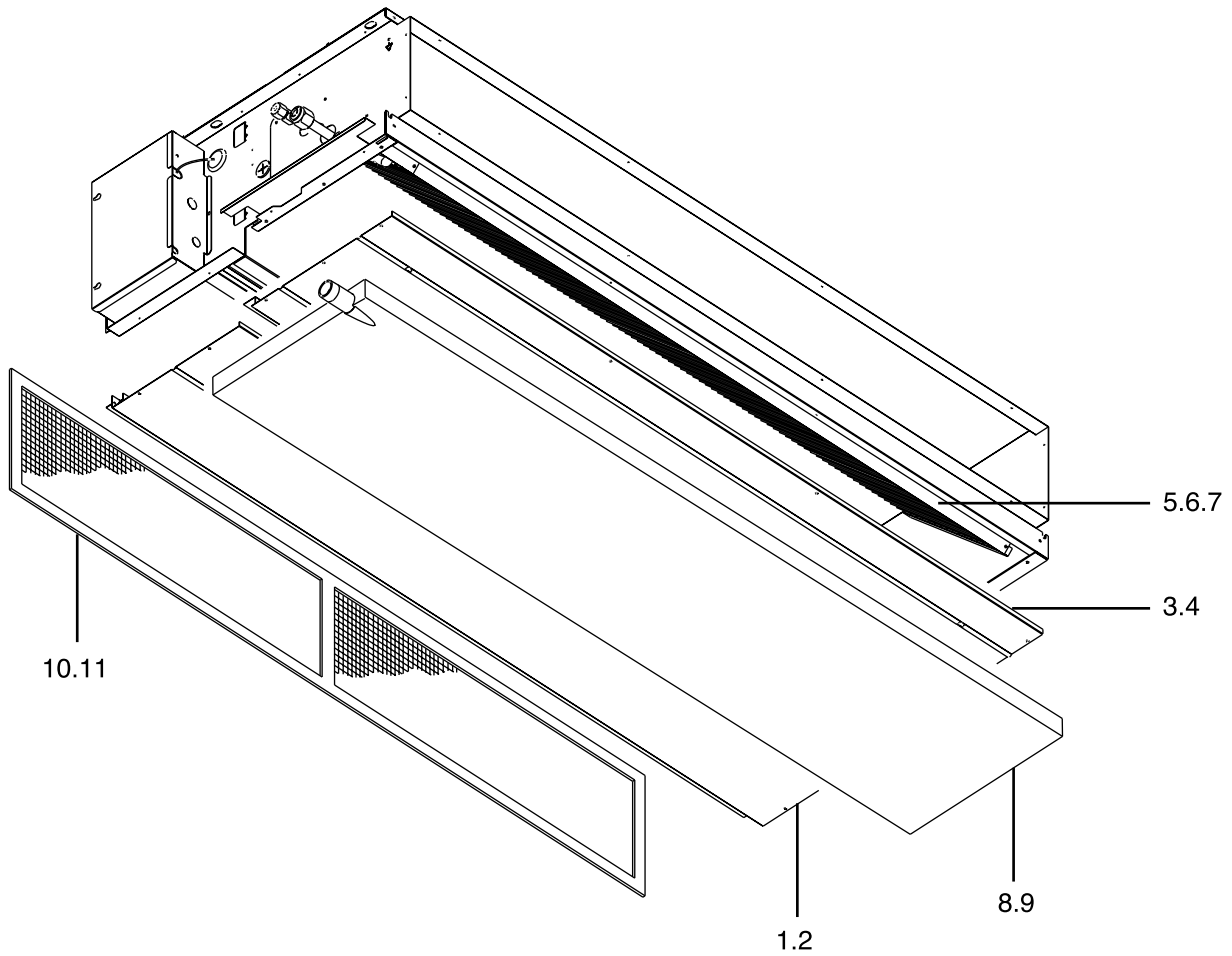
1. COMBINATION OF INDOOR AND OUTDOOR UNITS	2
2. SAFETY PRECAUTION	3
3. PART NAMES AND FUNCTIONS	5
4. SPECIFICATION	8
5. DATA	15
6. REFRIGERANT SYSTEM DIAGRAM	38
7. OUTLINES & DIMENSIONS	39
8. WIRING DIAGRAM	41
9. TROUBLE SHOOTING	42
10. DISASSEMBLY INSTRUCTIONS	51
11. PARTS LIST	53
12. OPTIONAL PARTS	59

11

PARTS LIST

PEAD-RP1.6EA, PEAD-RP2EA, PEAD-RP2.5EA,

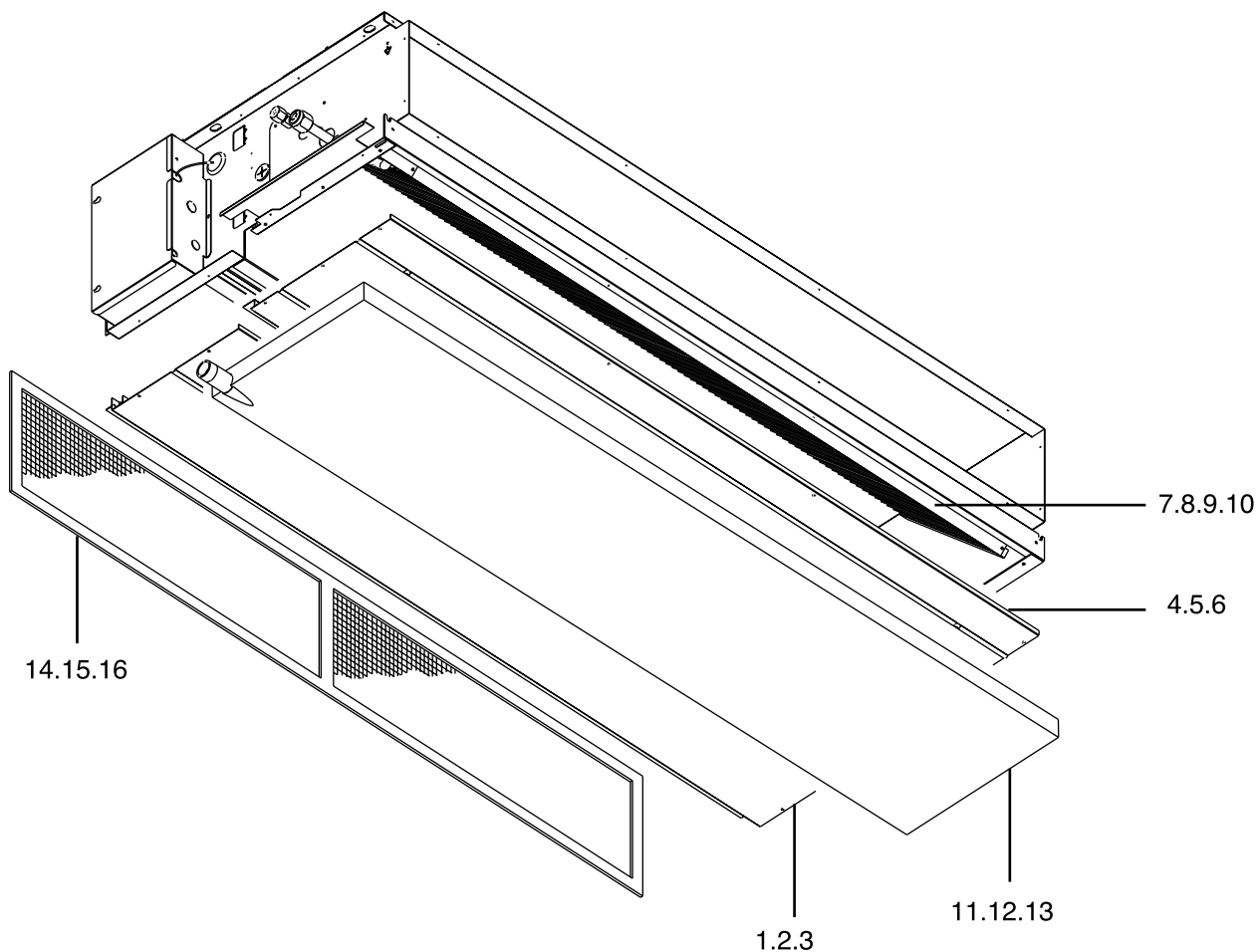
EXTERNAL PARTS



No.	Part No.	Part Name	Drawing No.	Qt'y/set				Spec.
				PEAD-RP1.6EA	PEAD-RP2EA	PEAD-RP2.5EA		
1	S70 031 669	Bottom plate 1	W638939Z04	1	1			
2	S70 011 669	Bottom plate 1	W638917Z04			1		
3	S70 081 669	Bottom plate 2 ass'y	W638940G03	1	1			
4	S70 091 669	Bottom plate 2 ass'y	W638918G03			1		
5	S70 R20 480	H.EX.General ass'y	W268527G03	1				
6	S70 R35 480	H.EX.General ass'y	W268527G04		1			
7	S70 R22 480	H.EX.General ass'y	W268527G05			1		
8	S70 011 529	Drain pan ass'y	W638942G01	1	1			
9	S70 021 529	Drain pan ass'y	W638920G01			1		
10	S70 021 500	Filter	W645496G02	1	1			
11	S70 031 501	Filter	W645496G03			1		

PEAD-RP3EA1, PEAD-RP4EA1,
PEAD-RP5EA1, PEAD-RP6EA1

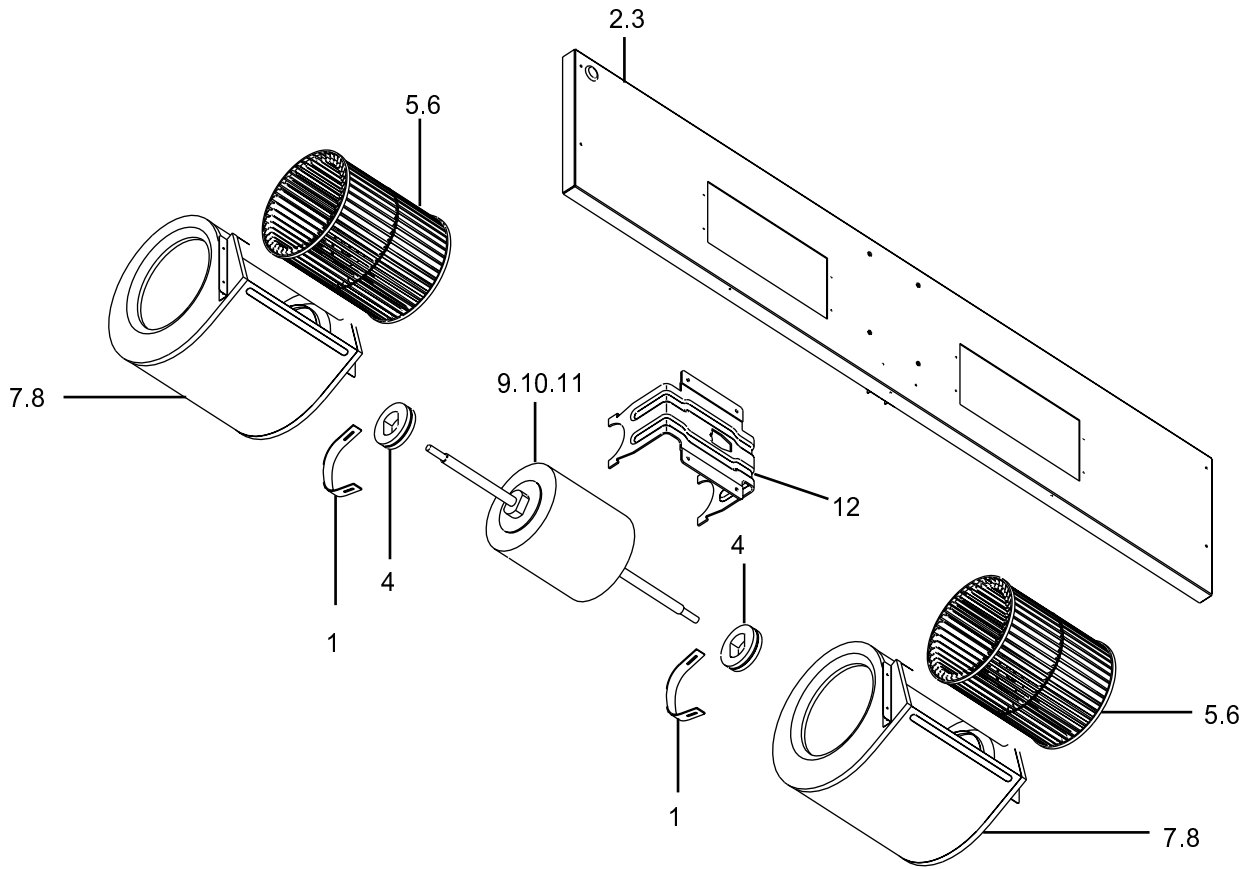
EXTERNAL PARTS



No.	Part No.	Part Name	Drawing No.	Qt'y/set				Spec.
				PEAD-RP3EA1	PEAD-RP4EA1	PEAD-RP5EA1	PEAD-RP6EA1	
1	S70 041 669	Bottom plate 1	W634050Z01	1				
2	S70 042 669	Bottom plate 1	W634028Z01		1	1		
3	S70 040 669	Bottom plate 1	W631101Z04				1	
4	S70 051 669	Bottom plate 2 ass'y	W634052G01	1				
5	S70 052 669	Bottom plate 2 ass'y	W634030G01		1	1		
6	S70 050 669	Bottom plate 2 ass'y	W631188G02				1	
7	S70 032 480	H.EX.General ass'y	W268528G01	1				
8	S70 R36 480	H.EX.General ass'y	W268528G04		1			
9	S70 R37 480	H.EX.General ass'y	W268528G05			1		
10	S70 R38 480	H.EX.General ass'y	W268529G02				1	
11	S70 050 529	Drain pan ass'y	W634056G01	1				
12	S70 060 529	Drain pan ass'y	W634034G01		1	1		
13	S70 040 529	Drain pan ass'y	W631186G01				1	
14	S70 050 500	Filter	W645497G01	1				
15	S70 040 500	Filter	W645497G02		1	1		
16	S70 010 500	Filter	W645497G03				1	

PEAD-RP1.6EA, PEAD-RP2EA, PEAD-RP2.5EA,

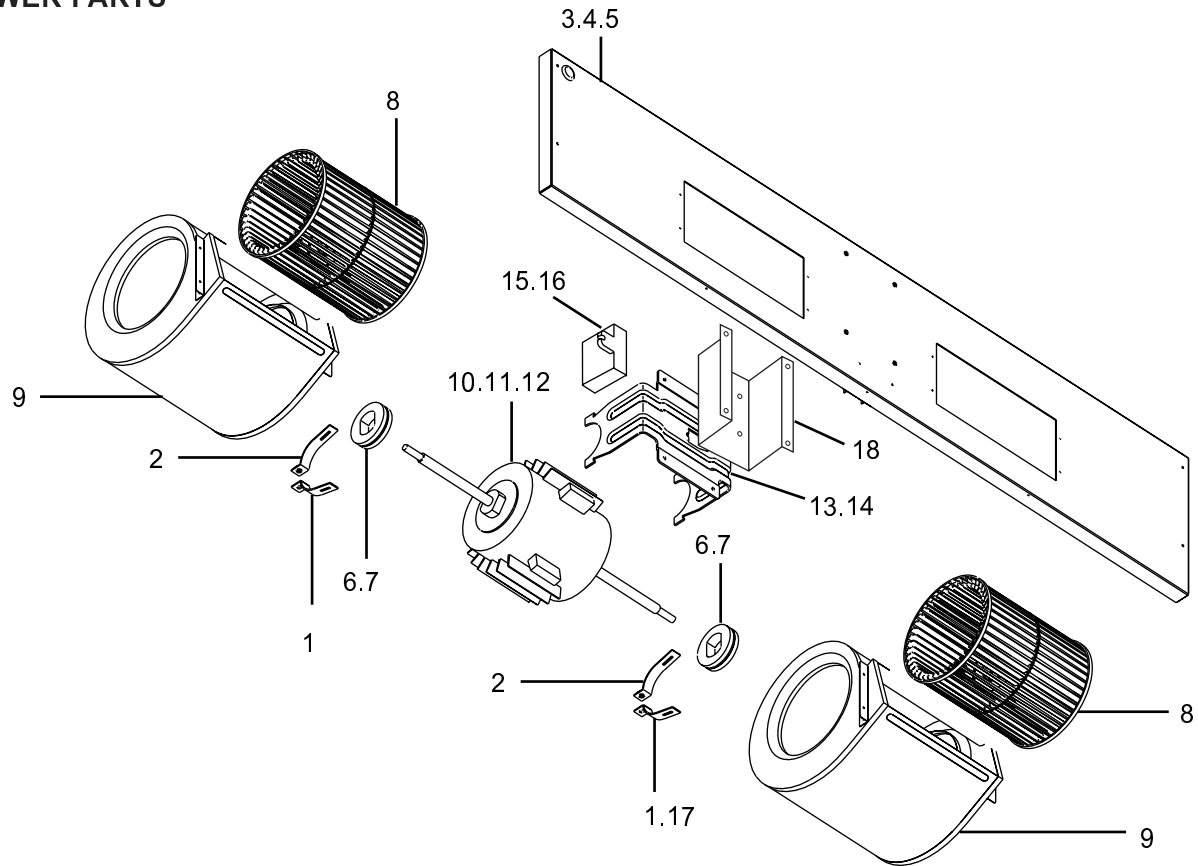
BLOWER PARTS



No.	Part No.	Part Name	Drawing No.	Qt'y/set			
				PEAD-RP1.6EA	PEAD-RP2EA	PEAD-RP2.5EA	
1	S70 652 131	Attachment	W353715H01	2	2	2	
2	S70 051 677	Fan base ass'y	W638932G03	1	1		
3	S70 061 677	Fan base ass'y	W638905G03			1	
4	S70 922 105	Bush	W818836H01	2	2	2	
5	S70 A88 114	Sirocco fan	W122296G02	2	2		
6	S70 A89 114	Sirocco fan	W122297G02			2	
7	S70 989 110	Housing ass'y	W638949G03	2	2		
8	S70 985 110	Housing ass'y	W638949G04			2	
9	S70 Y57 220	Motor	P714315X02	1			<MF>
10	S70 Y58 220	Motor	P714316X02		1		<MF>
11	S70 Y56 220	Motor	P714774X01			1	<MF>
12	S70 652 130	Motor support	W241060H03	1	1	1	

PEAD-RP3EA1, PEAD-RP4EA1,
PEAD-RP5EA1, PEAD-RP6EA1

BLOWER PARTS

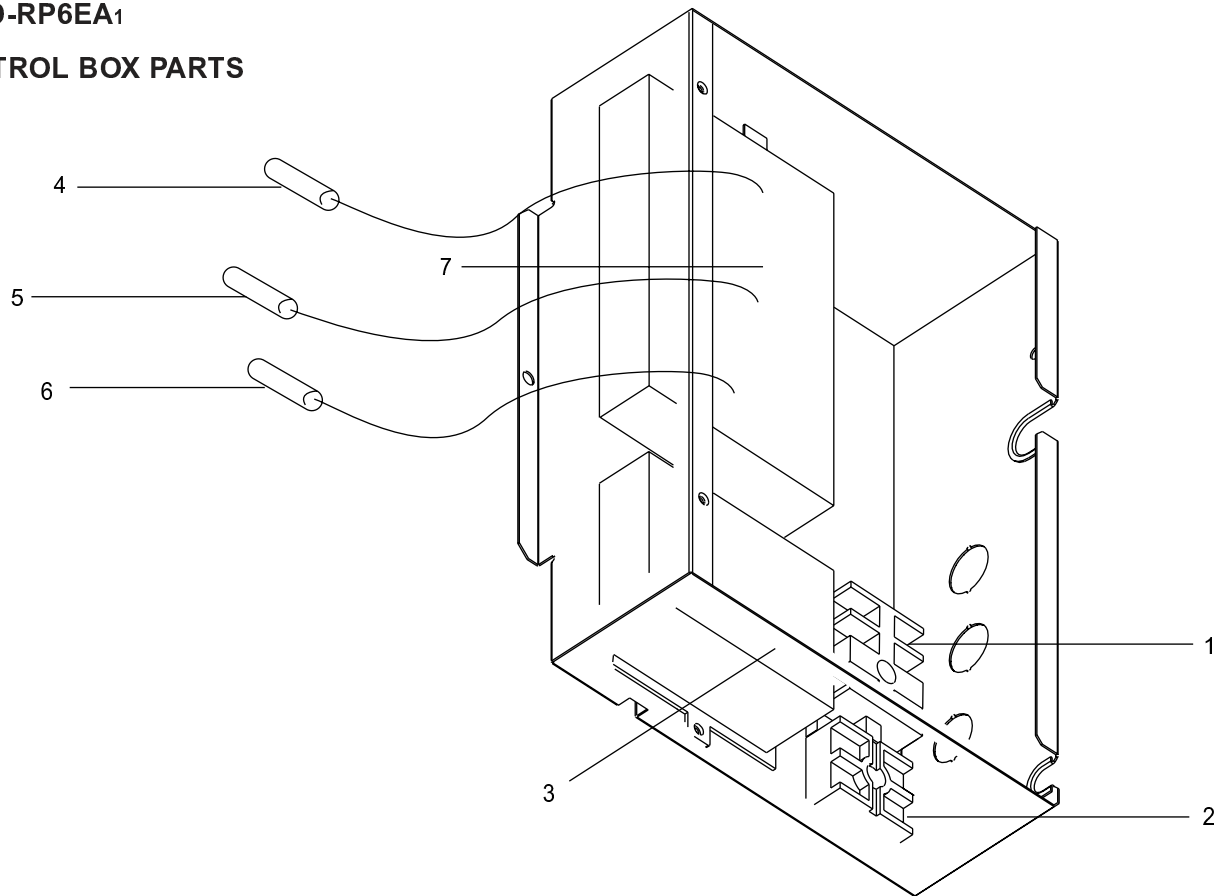


No.	Part No.	Part Name	Drawing No.	Qt'y/set				
				PEAD-RP3EA1	PEAD-RP4EA1	PEAD-RP5EA1	PEAD-RP6EA1	
1	S70 508 131	Piece	R02K338H02		2	2	2	
2	S70 508 132	Piece	R02K338G82		2	2	2	with a nut
3	S70 073 677	Fan base ass'y	W634058G02	1				
4	S70 072 677	Fan base ass'y	W634036G02		1	1		
5	S70 070 677	Fan base ass'y	W631187G02				1	
6	S70 766 105	Bush	W491760H02	2				
7	S70 Y01 105	Bush	W860050H02		2	2	2	
8	S70 Y07 114	Sirocco fan	W631126G02	2	2	2	2	20-25L
9	S70 001 110	Housing ass'y	W631120G02	2	2	2	2	
10	S70 Y15 220	Motor	P714661X01	1				<MF> 150W,1Phase 220- 240V
11	S70 Y16 220	Motor	P714941X01		1			<MF> 240W,1Phase 220- 240V
12	S70 Y17 220	Motor	P714940X01			1	1	<MF> 270W,1Phase 220- 240V
13	S70 652 130	Motor support	W241060H03	1				
14	S70 Y08 130	Leg	W631122Z04		1	1	1	
15	S70 010 255	Capacitor 6	P412172X01		1			< C >
16	S70 020 255	Capacitor 16	P412223X01			2	2	< C >
* 17	S70 652 131	Attachment	W353715H01	2				
18	S70 090 130	Motor base	W634069Z02	1				

*: Not illustrated

PEAD-RP1.6EA, PEAD-RP2EA, PEAD-RP2.5EA,
 PEAD-RP3EA₁, PEAD-RP4EA₁, PEAD-RP5EA₁,
 PEAD-RP6EA₁

CONTROL BOX PARTS

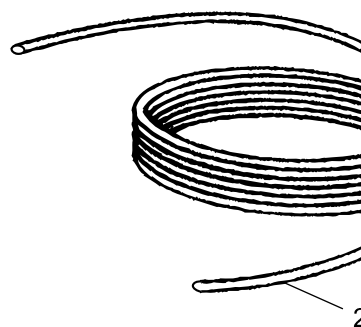
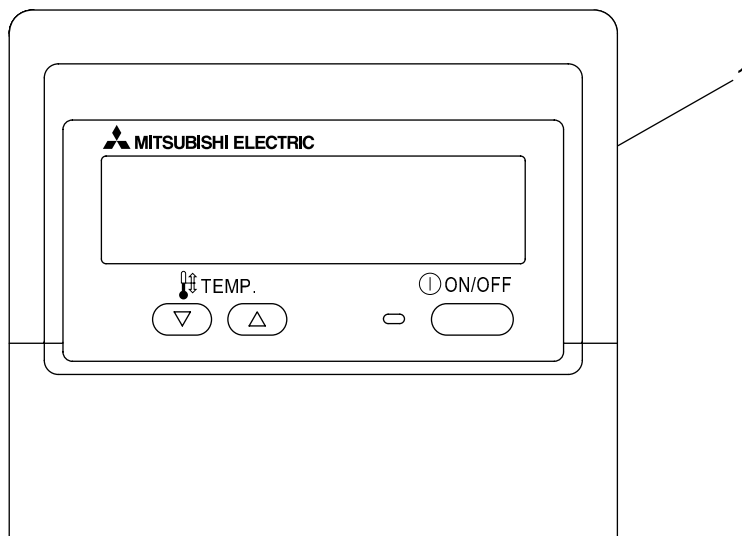


No.	Part No.	Part Name	Drawing No.	Qt'y/set			Spec.
				PEAD-P1.6EA	PEAD-P2EA	PEAD-P2.5EA	
1	S70 979 717	Terminal bed	P436110X01	1	1	1	< TB4 >
2	S70 435 717	Terminal bed	BA73S950H02	1	1	1	< TB5 >
3	S70 E00 313	P.W.B DENGEN-E	P718898X01	1	1	1	
4	S70 070 202	Thermistor	P425455X01	1	1	1	< TH1 >
5	S70 080 202	Thermistor	P425459X02	1	1	1	< TH2 >
6	S70 090 202	Thermistor	P425458X02	1	1	1	< TH5 >
7	S70 203 310	SPCB	BG00V680BB9	1	1	1	

No.	Part No.	Part Name	Drawing No.	Qt'y/set				Spec.
				PEAD-RP3EA ₁	PEAD-RP4EA ₁	PEAD-RP5EA ₁	PEAD-RP6EA ₁	
1	S70 979 317	Terminal bed	P436110X01	1	1	1	1	< TB4 >
2	S70 435 717	Terminal bed	BA73S950H02	1	1	1	1	< TB5 >
3	S70 E00 313	P.W.B DENGEN-E	P718898X01	1	1	1	1	
4	S70 070 202	Thermistor	P425455X01	1	1	1	1	< TH1 >
5	S70 080 202	Thermistor	P425459X02	1	1	1	1	< TH2 >
6	S70 090 202	Thermistor	P425458X02	1	1	1	1	< TH5 >
7	S70 203 310	SPCB	BG00V680BB9	1	1	1	1	

PEAD-RP1.6EA, PEAD-RP2EA, PEAD-RP2.5EA,
 PEAD-RP3EA₁, PEAD-RP4EA₁, PEAD-RP5EA₁,
 PEAD-RP6EA₁

ELECTRICAL PARTS

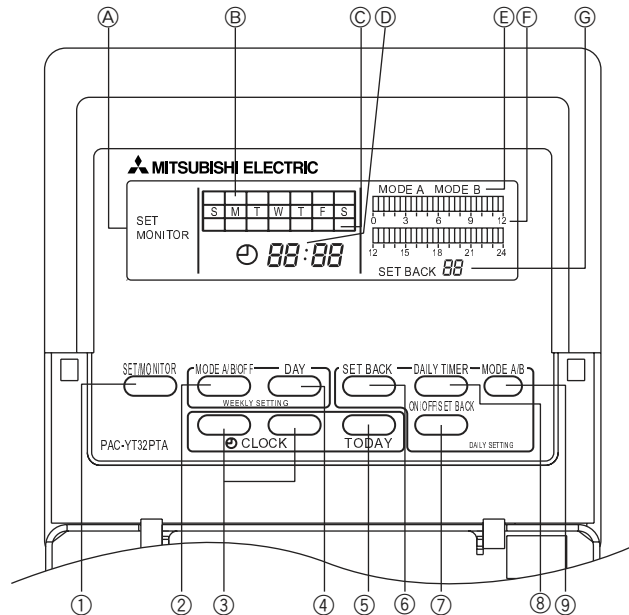


No.	Part No.	Part Name	Drawing No.	Qt'y/set				Spec.
				PEAD-RP1.6EA	PEAD-RP2EA	PEAD-RP2.5EA		
1	S70 030 713	Remote controller	W267102G60	1	1	1		MA Remo-con
2	S70 030 305	Remote controller cable	W873334G05	1	1	1		10 m

No.	Part No.	Part Name	Drawing No.	Qt'y/set				Spec.
				PEAD-RP3EA ₁	PEAD-RP4EA ₁	PEAD-RP5EA ₁	PEAD-RP6EA ₁	
1	S70 030 713	Remote controller	W267102G60	1	1	1	1	MA Remo-con
2	S70 030 305	Remote controller cable	W873334G05	1	1	1	1	10 m

1. PROGRAM TIMER

Part No.	PAC-YT32PTA
----------	-------------

1-1. Names and functions
<PAC-YT32PTA>

- Ⓐ SET/MONITOR DISPLAY:**
When SET is displayed, clock adjustment, change of day, and daily and weekly timer settings can be performed. When MONITOR is displayed, all switches except SET/MONITOR SW are invalidated. This is normal status.
- Ⓑ WEEKLY TIMER SETTING DISPLAY:**
Used to select whether the operation pattern set using the PATTERN SETTING can be applied to different days of the week.
- Ⓒ CURRENT DAY DISPLAY:**
Indicates the current day.
- Ⓓ CURRENT TIME DISPLAY:**
During MONITOR status, current time is display.
During daily timer setting, a time desire for timer setting is displayed.
- Ⓔ OPERATION MODE DISPLAY:**
Indicates the operation mode.
- Ⓕ DAILY TIMER SETTING DISPLAY:**
24 hours is divided into 48 blocks and each block is expressed in 30 minutes.
The block display consists of 3 patterns.
- Ⓖ SET BACK DISPLAY**
Indicates the set back value.
- ① SET/MONITOR Button**
Using this switch, select "MONITOR" or "SET" Mode.
"MONITOR": Indicates the current timer setting. All switches except MODE SELECTOR SW are invalidated then. This is the normal status.
"SET": Set to "SET" mode for clock adjustment, change of day and daily and weekly timer settings.
- ② MODE A/OFF Button**
Used for setting timer in day of week unit.
- ③ CLOCK ADJUSTMENT Button**
Used for adjustment of the current time.
Push [▲] SW to advance the time. Each time the button is pushed the time advances by 1 minute, pushing continuously advances by 1 minute at 0.5 second intervals, and when the lower digit of the minute becomes "0" the time advances in 10 minute units.
[▼] SW is used for reversing the time. Each time the button is pushed the time reverses by 1 minute, pushing continuously reverses the time by 1 minute at 0.5 second intervals, and when the lower digit of the minute becomes "0" the time reverses in 10 minute units.
- ④ DAY SETTING Button**
Used when setting the day.
- ⑤ WEEK DAY SETTING Button**
Used for week day setting.
Pushing [▶] SW moves the week day light display in order of S → M → T → W → ... enabling to set the week day.
- ⑥ SET BACK SETTING Button**
Used for set back setting.
Set back can be done in the range of 1, 2, 4, 6 and 8°C (2, 4, 8, 12 and 16°F).
- ⑦ ON/OFF/SET BACK Button**
Used to specify the time setting pattern.
- ⑧ DAILY TIMER Button**
Used for timer setting in 30 minute units.
- ⑨ MODE A/B Button**
Used to set A Mode or B Mode when specifying the operation time.

2. REMOTE SENSOR

Part No.	PAC-SE41TS-E
Applied model	PEAD-RP1.6,2,2.5EA , PEAD-RP3,4,5,6EA1

3. REMOTE OPERATION ADAPTER

Part No.	PAC-SF40RM-E
Applied model	PEAD-RP1.6,2,2.5EA , PEAD-RP3,4,5,6EA1

4. REMOTE ON/OFF ADAPTER

Part No.	PAC-SE55RA-E
Applied model	PEAD-RP1.6,2,2.5EA , PEAD-RP3,4,5,6EA1

5. OPTIONAL MOTOR

The external static pressure of 130Pa allows long ducts to be used more extensively to enable the most convenient positioning of indoor units.

Part No.	PAC-SK005MT-F	PAC-SK004MT-F	PAC-SK003MT-F
Applied model	PEAD-RP3EA1	PEAD-RP4EA1	PEAD-RP5,6EA1

6. DRAIN WATER LIFT-UP MECHANISM

This allows more versatility when selecting drain piping layouts.

Part No.	PAC-KE03DM-F
Applied model	PEAD-RP1.6,2,2.5EA , PEAD-RP3,4,5,6EA1

Mr. SLIM™

 **mitsubishi electric corporation**
HEAD OFFICE: MITSUBISHI DENKI BLDG., 2-2-3, MARUNOUCHI, CHIYODA-KU, TOKYO 100-8310, JAPAN