

TECHNICAL & SERVICE MANUAL

R410A

Outdoor unit
 [model names]

SUZ-A09VR

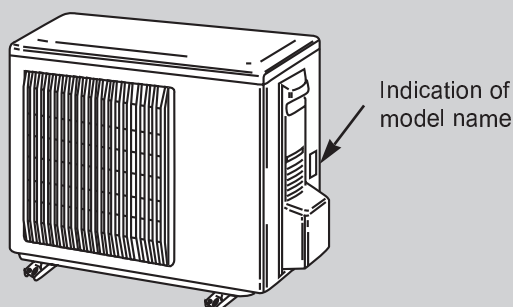
SUZ-A12VR

SUZ-A18VR

SUZ-A24VR

[Service Ref.]

SUZ-A09VR.TH
SUZ-A12VR.TH
SUZ-A18VR.TH
SUZ-A24VR.TH



Indication of
 model name

SUZ-A09VR.TH SUZ-A12VR.TH

Revision :

- "14.PARTS LIST" has been modified.

NOTE:

This service manual describes technical data of the outdoor units.

- As for indoor units SLZ-A09AR.TH, SLZ-A12AR.TH, SLZ-A18AR.TH, SEZ-A12AR.TH, SEZ-A18AR.TH, SEZ-A24AR.TH and SEZ-A09CR.W, refer to the service manual OC302 and OC303.

- Please void OC304 REVICED EDITION-A.

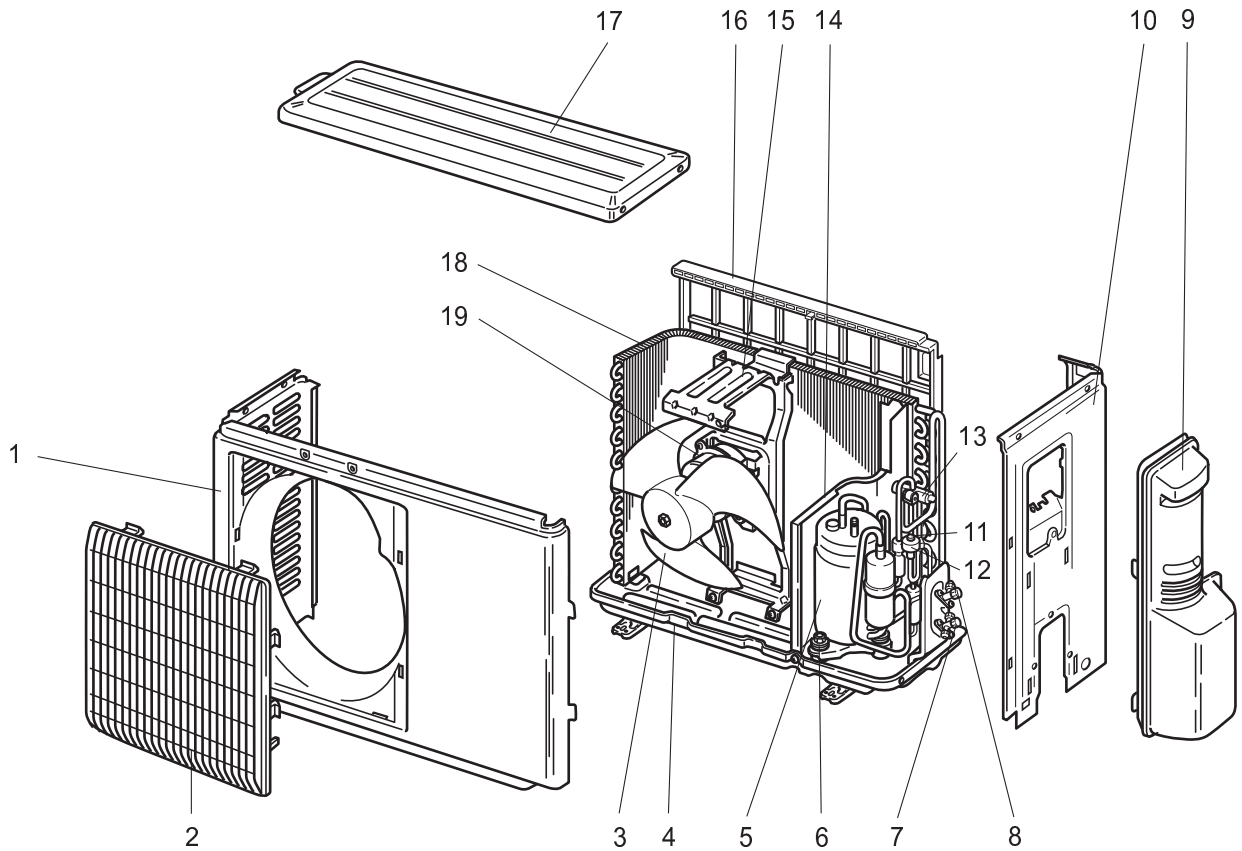
CONTENTS

| | |
|--|----|
| 1. COMBINATION OF INDOOR AND OUTDOOR UNITS | 2 |
| 2. TECHNICAL CHANGES | 3 |
| 3. PART NAMES AND FUNCTIONS | 6 |
| 4. SPECIFICATION | 7 |
| 5. NOISE CRITERIA CURVES | 11 |
| 6. OUTLINES AND DIMENSIONS | 12 |
| 7. WIRING DIAGRAM | 14 |
| 8. REFRIGERANT SYSTEM DIAGRAM | 16 |
| 9. PERFORMANCE CURVES | 19 |
| 10. ACTUATOR CONTROL | 41 |
| 11. SERVICE FUNCTIONS | 42 |
| 12. TROUBLESHOOTING | 42 |
| 13. DISASSEMBLY INSTRUCTIONS | 71 |
| 14. PARTS LIST | 79 |

SUZ-A09VR.TH

SUZ-A12VR.TH

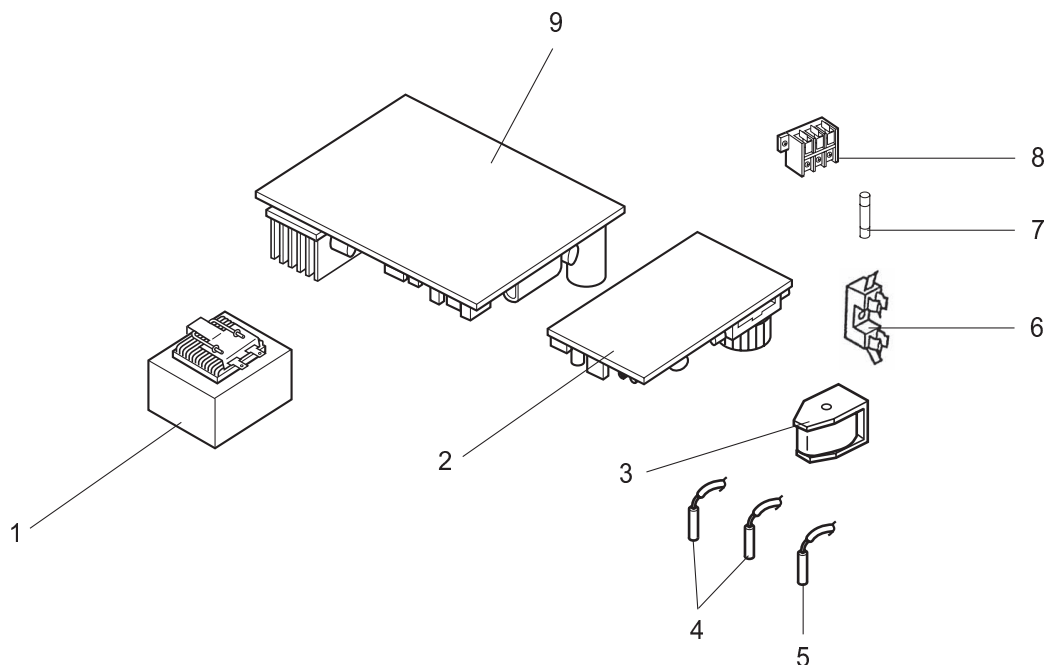
14-1. OUTDOOR UNIT STRUCTURAL PARTS AND FUNCTIONAL PARTS



Part number that is circled is not shown in the illustration.

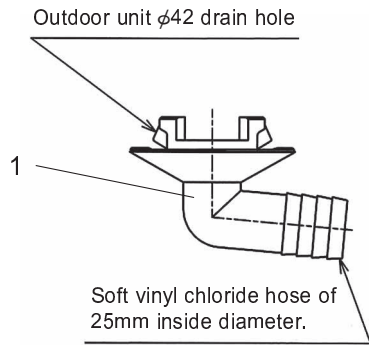
| No. | Part No. | Part Name | Symbol in Wiring Diagram | Q'ty/unit | | Remarks |
|-----|-------------|------------------------|--------------------------------|--------------|--------------|---------------|
| | | | | SUZ-A09VR.TH | SUZ-A12VR.TH | |
| 1 | E02 838 232 | CABINET | | 1 | 1 | |
| 2 | E02 838 521 | GRILLE | | 1 | 1 | |
| 3 | E02 838 501 | PROPELLER | | 1 | 1 | |
| 4 | E02 838 290 | BASE | | 1 | 1 | |
| 5 | E02 838 900 | COMPRESSOR | MC | 1 | | KNB073FBVH |
| | E02 839 900 | COMPRESSOR | MC | | 1 | KNB092FAAH |
| 6 | E02 065 506 | COMPRESSOR RUBBER SET | | 3 | 3 | 3RUBBERS/SET |
| 7 | E02 838 661 | STOP VALVE (GAS) | | 1 | 1 | φ9.52 |
| 8 | E02 838 662 | STOP VALVE (LIQUID) | | 1 | 1 | φ6.35 |
| 9 | E02 838 245 | SERVICE PANEL | | 1 | 1 | |
| 10 | E02 838 233 | BACK PANEL | | 1 | 1 | |
| 11 | E02 838 640 | EXPANSION VALVE | | 1 | 1 | |
| 12 | E02 838 493 | EXPANSION VALVE COIL | LEV | 1 | 1 | |
| 13 | E02 838 961 | 4-WAY VALVE | | 1 | 1 | |
| 14 | E02 838 293 | SEPARATOR | | 1 | 1 | |
| 15 | E02 838 515 | MOTOR SUPPORT | | 1 | 1 | |
| 16 | E02 838 523 | CONDENSER NET | | 1 | 1 | |
| 17 | E02 838 297 | TOP PANEL | | 1 | 1 | |
| 18 | E02 838 630 | OUTDOOR HEAT EXCHANGER | | 1 | | |
| | E02 839 630 | OUTDOOR HEAT EXCHANGER | | | 1 | |
| 19 | E02 838 301 | OUTDOOR FAN MOTOR | MF | 1 | 1 | RA6V21-□□ |
| 20 | E02 282 937 | CAPILLARY TUBE | | 1 | 1 | φ3.0×φ2.0×200 |

SUZ-A09VR.TH
 SUZ-A12VR.TH
 14-2. OUTDOOR UNIT
 ELECTRICAL PARTS



| No. | Part No. | Part Name | Symbol in Wiring Diagram | Q'ty/unit | | Remarks |
|-----|-------------|--------------------------------|--------------------------|--------------|--------------|------------------------------|
| | | | | SUZ-A09VR.TH | SUZ-A12VR.TH | |
| 1 | E02 838 337 | REACTOR | L61 | 1 | 1 | |
| 2 | E02 838 444 | POWER P.C. BOARD | | 1 | 1 | |
| 3 | E02 838 490 | REVERSING VALVE COIL | 21S4 | 1 | 1 | |
| 4 | E02 838 306 | THERMISTOR SET | RT61,RT62 | 1 | 1 | DEFROST, DISCHARGE |
| 5 | E02 838 308 | AMBIENT TEMPERATURE THERMISTOR | RT65 | 1 | 1 | |
| 6 | E02 735 241 | FUSE HOLDER | | 1 | 1 | |
| 7 | E02 735 382 | FUSE | F61 | 1 | 1 | 250V/20A |
| 8 | E02 838 374 | TERMINAL BLOCK | TB | 1 | 1 | 3P |
| 9 | E07 146 451 | INVERTER P.C. BOARD | | 1 | | Including heat sink and RT64 |
| | E07 147 451 | INVERTER P.C. BOARD | | | 1 | Including heat sink and RT64 |

SUZ-A09VR.TH
SUZ-A12VR.TH
14-3. DRAIN SOCKET

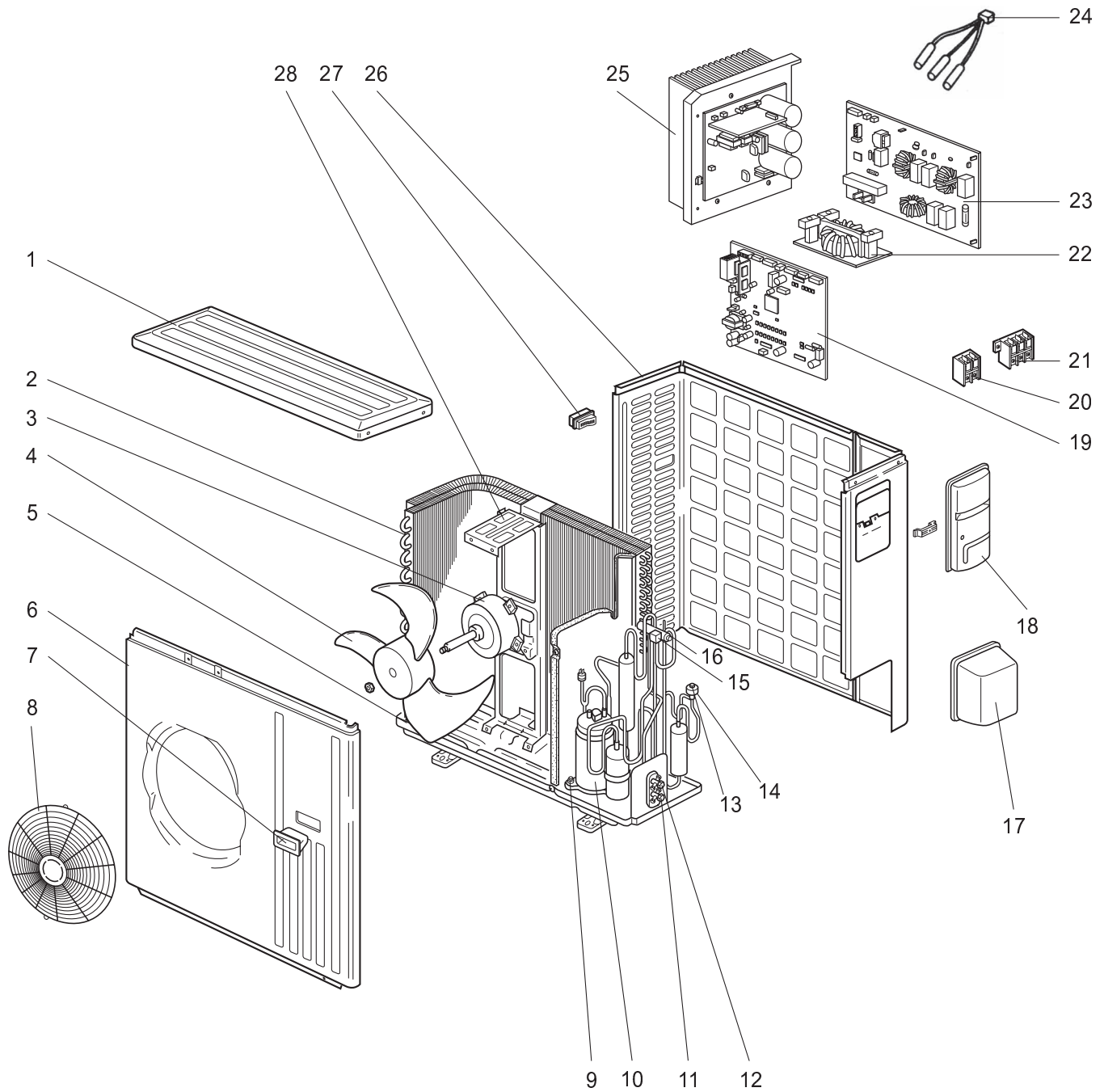


| No. | Parts No. | Parts Name | Symbol in Wiring Diagram | Q'ty/unit | | Remarks |
|-----|-------------|--------------|--------------------------------|--------------|--------------|---------|
| | | | | SUZ-A09VR.TH | SUZ-A12VR.TH | |
| 1 | E02 838 704 | DRAIN SOCKET | | 1 | 1 | |

SUZ-A18VR.TH

SUZ-A24VR.TH

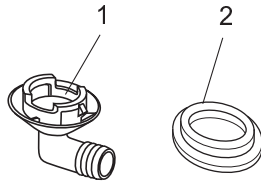
14-4. OUTDOOR UNIT STRUCTURAL PARTS, ELECTRICAL PARTS AND FUNCTIONAL PARTS



Part numbers that are circled are not shown in the illustration.

| No. | Part No. | Part Name | Symbol in Wiring Diagram | Q'ty/unit | | Remarks |
|-----|-------------|---------------------------------------|--------------------------------|--------------|--------------|--|
| | | | | SUZ-A18VR.TH | SUZ-A24VR.TH | |
| 1 | E02 819 297 | TOP PANEL | | 1 | 1 | |
| 2 | E02 851 630 | OUTDOOR HEAT EXCHANGER | | 1 | 1 | |
| 3 | E02 851 301 | OUTDOOR FAN MOTOR | MF | 1 | 1 | PM8H60- □□ |
| 4 | E02 851 501 | PROPELLER | | 1 | 1 | |
| 5 | E02 851 290 | BASE | | 1 | 1 | |
| 6 | E02 819 232 | CABINET | | 1 | 1 | |
| 7 | E02 819 009 | HANDLE | | 1 | 1 | |
| 8 | E02 819 521 | FAN GUARD | | 1 | 1 | |
| 9 | E02 065 506 | COMPRESSOR RUBBER SET | | 3 | 3 | 3RUBBERS/SET |
| 10 | E02 851 900 | COMPRESSOR | MC | 1 | 1 | SNB130FLDH |
| 11 | E02 851 661 | STOP VALVE(GAS) | | 1 | | φ12.7 |
| | E02 819 661 | STOP VALVE(GAS) | | | 1 | φ15.88 |
| 12 | E02 821 662 | STOP VALVE(LIQUID) | | 1 | 1 | φ6.35 |
| 13 | E02 851 640 | EXPANSION VALVE | | 1 | 1 | |
| 14 | E02 851 493 | EXPANSION VALVE COIL | LEV | 1 | 1 | |
| 15 | E02 851 490 | R.V. COIL | 21S4 | 1 | 1 | |
| 16 | E02 891 961 | 4-WAY VALVE | | 1 | 1 | |
| 17 | E02 819 650 | VALVE COVER | | 1 | 1 | |
| 18 | E02 819 245 | SERVICE PANEL | | 1 | 1 | |
| 19 | E02 851 450 | OUTDOOR ELECTRONIC CONTROL P.C. BOARD | | 1 | | |
| | E02 852 450 | OUTDOOR ELECTRONIC CONTROL P.C. BOARD | | | 1 | |
| 20 | E02 836 374 | TERMINAL BLOCK | TB2 | 1 | 1 | 2P |
| 21 | E02 823 375 | TERMINAL BLOCK | TB1 | 1 | 1 | 3P |
| 22 | E02 851 337 | REACTOR | L | 1 | 1 | |
| 23 | E02 851 444 | NOISE FILTER P.C. BOARD | | 1 | 1 | |
| 24 | E02 851 308 | THERMISTOR SET | RT61,RT62,RT68 | 1 | 1 | DISCHARGE, DEFROST OUTDOOR HEAT EXCHANGER |
| 25 | E02 851 440 | POWER BOARD | | 1 | 1 | Including heat sink and RT65 |
| 26 | E02 819 233 | BACK PANEL(OUT) | | 1 | 1 | |
| 27 | E02 817 009 | HANDLE | | 1 | 1 | |
| 28 | E02 851 515 | MOTOR SUPPORT | | 1 | 1 | |
| ②⑨ | E02 127 382 | FUSE | F801 | 1 | 1 | 250V/3.15A |
| ③⑩ | E02 737 382 | FUSE | F911 | 1 | 1 | 250V/1A |
| ③① | E02 735 385 | FUSE & VARISTOR | F912,NR63 | 1 | 1 | 250V/3.15A |
| ③② | E02 851 936 | CAPILLARY TUBE(TAPER PIPE) | | 1 | 1 | φ3.6xφ2.4x50 |

SUZ-A18VR.TH
 SUZ-A24VR.TH
 14-5. ACCESSORY



| No. | Part No. | Part Name | Symbol in Wiring Diagram | Q'ty/unit | | Remarks |
|-----|-------------|--------------|--------------------------------|--------------|--------------|---------|
| | | | | SUZ-A18VR.TH | SUZ-A24VR.TH | |
| 1 | E02 817 704 | DRAIN SOCKET | | 1 | 1 | |
| 2 | E02 444 705 | DRAIN CAP | | 2 | 2 | φ33 |

 **MITSUBISHI ELECTRIC CORPORATION**

HEAD OFFICE: MITSUBISHI DENKI BLDG., 2-2-3, MARUNOUCHI, CHIYODA-KU, TOKYO100-8310, JAPAN