

SERVICE MANUAL

Series PCA Ceiling Suspended R407C/R410A

**Indoor unit
[Model names]**

PCA-RP50GA
 PCA-RP50GA2
 PCA-RP60GA
 PCA-RP71GA
 PCA-RP100GA
 PCA-RP125GA
 PCA-RP140GA

[Service Ref.]

PCA-RP50GA
 PCA-RP50GA2
 PCA-RP60GA
 PCA-RP71GA
 PCA-RP100GA
 PCA-RP125GA
 PCA-RP140GA

PCA-RP50GA#1
 PCA-RP50GA2#1
 PCA-RP60GA#1
 PCA-RP71GA#1
 PCA-RP100GA#1
 PCA-RP125GA#1
 PCA-RP140GA#1

Revision :

- PCA-RP50~140GA(2)#1 are added in REVISED EDITION-B.
- RoHS PARTS LIST added.
- Some descriptions have been modified.

- Please void OC328 REVISED EDITION-A

Series PCH

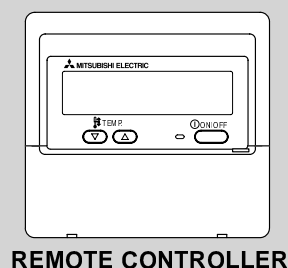
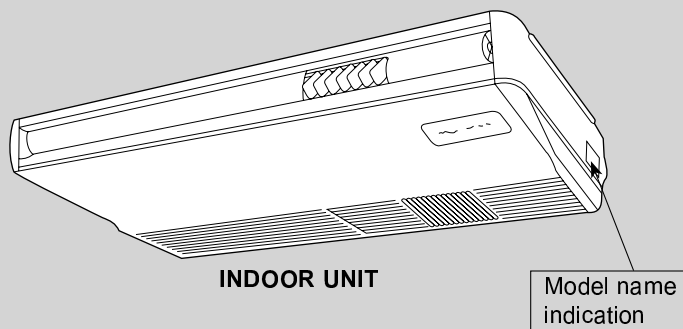
PCH-P50GAH
 PCH-P60GAH
 PCH-P71GAH
 PCH-P100GAH
 PCH-P125GAH
 PCH-P140GAH

PCH-P50GAH
 PCH-P60GAH
 PCH-P71GAH
 PCH-P100GAH
 PCH-P125GAH
 PCH-P140GAH

R407C

NOTE:

- This manual describes only service data of the indoor units.
- RoHS compliant products have <G> mark on the spec name plate.
- For servicing of RoHS compliant products, refer to the RoHS Parts List.



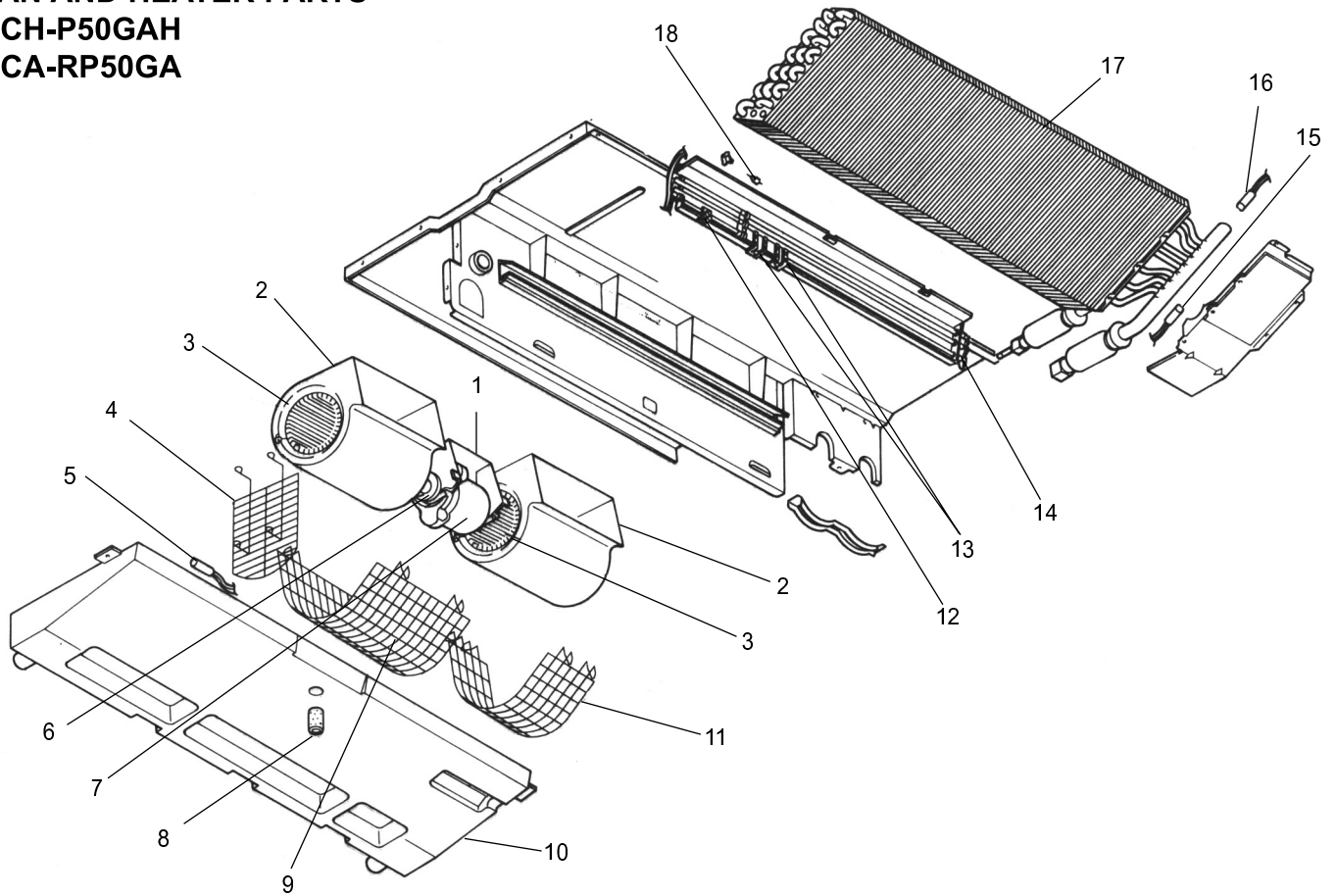
CONTENTS

1. TECHNICAL CHANGES.....	2
2. REFERENCE MANUAL.....	2
3. SAFETY PRECAUTION.....	3
4. PART NAMES AND FUNCTIONS.....	7
5. SPECIFICATIONS.....	9
6. NOISE CRITERION CURVES.....	13
7. OUTLINES AND DIMENSIONS.....	15
8. WIRING DIAGRAM.....	19
9. REFRIGERANT SYSTEM DIAGRAM.....	20
10. TROUBLESHOOTING.....	21
11. SPECIAL FUNCTION.....	33
12. DISASSEMBLY PROCEDURE.....	36
13. PARTS LIST.....	41
14. RoHS PARTS LIST.....	50

13

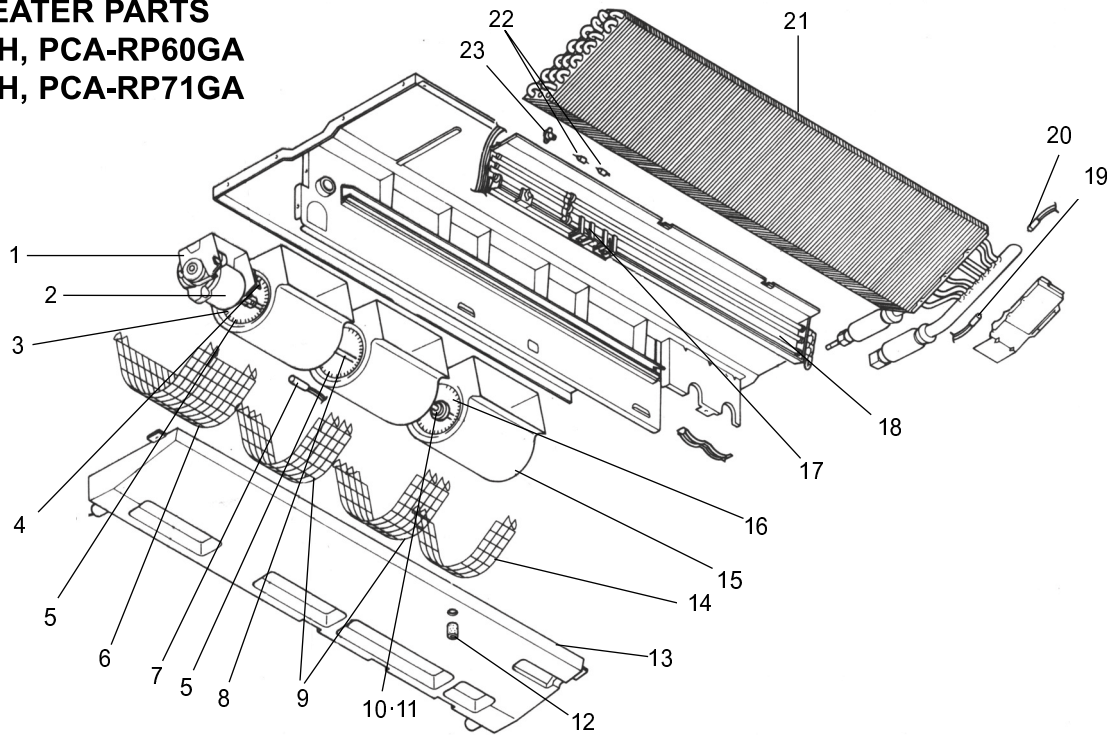
PARTS LIST(non-RoHS compliant)

FAN AND HEATER PARTS PCH-P50GAH PCA-RP50GA



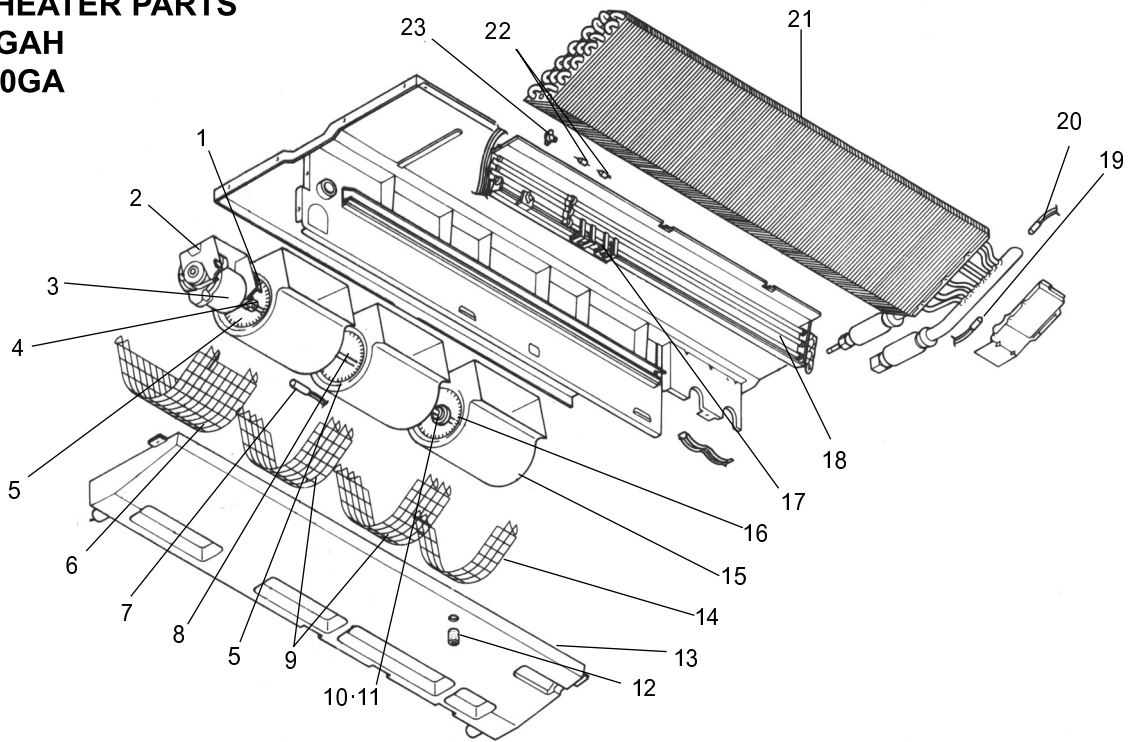
No.	Parts No.	Parts Name	Specifications	Q'ty / set		Remarks (Drawing No.)	Wiring Diagram Symbol	Recom- mended Q'ty
				PCH- P50GAH	PCA- RP50GA			
1	R01 17J 130	MOTOR LEG		1	1			
2	R01 17J 110	CASING		2	2			
3	R01 17J 114	SIROCCO FAN		2	2			
4	T7W 19J 675	FAN GUARD		1	1			
5	R01 E26 202	ROOM TEMPERATURE THERMISTOR		1	1		TH1	
6	R01 43E 126	PIECE (MOTOR)		1	1			
7	R01 17J 220	FAN MOTOR	D09B4P54MS	1	1		MF	
8	R01 17J 524	DRAIN PLUG		1	1			
9	T7W 17J 675	FAN GUARD		1	1			
10	R01 A14 529	DRAIN PAN ASSY		1	1			
11	T7W 18J 675	FAN GUARD		1	1			
12	R01 46K 700	THERMAL SWITCH	OFF:50°C ON:35°C	1			26H	
13	R01 18J 303	INSULATOR		3				
	R01 20J 303	INSULATOR		1				
14	T7W 23J 300	HEATER ELEMENT	80V 466W	3			H1	
15	R01 17J 202	PIPE TEMPERATURE THERMISTOR		1	1		TH2	
16	R01 E27 202	CONDENSER / EVAPORATOR TEMPERATURE THERMISTOR		1	1		TH5	
17	R01 E38 480	HEAT EXCHANGER		1				
	T7W K00 480	HEAT EXCHANGER			1			
18	R01 P02 706	THERMAL FUSE	250V 98°C 10A	1			FS1,2	

FAN AND HEATER PARTS
PCH-P60GAH, PCA-RP60GA
PCH-P71GAH, PCA-RP71GA



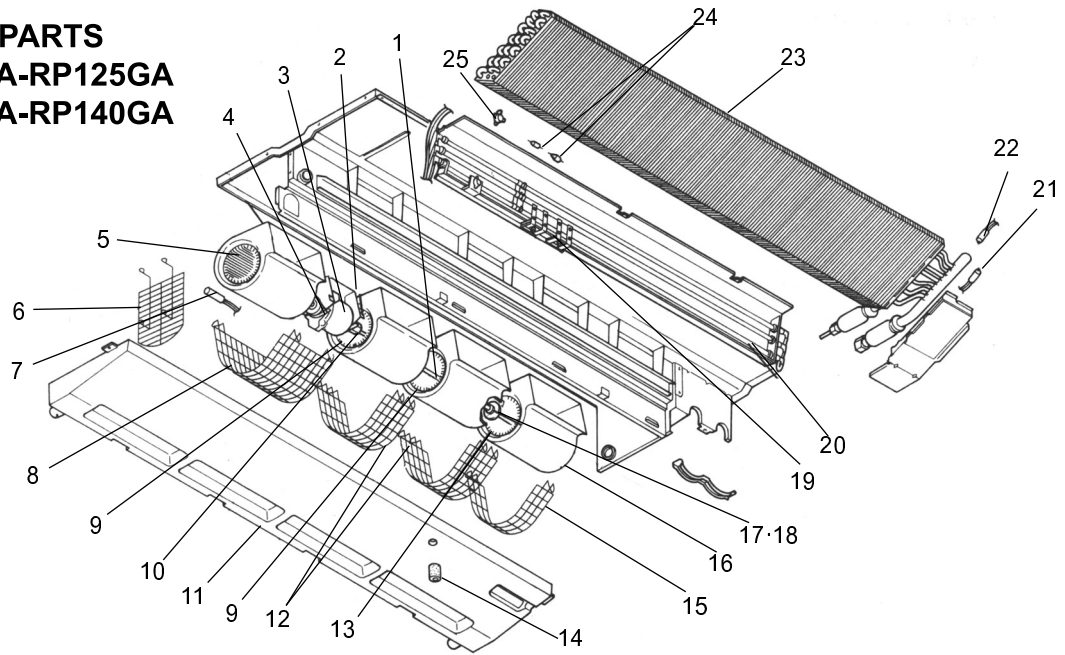
No.	Parts No.	Parts Name	Specifications	Q'ty / set				Remarks (Drawing No.)	Wiring Diagram Symbol	Recom- mended Q'ty
				PCH-		PCA-				
				P60 GAH	P71 GAH	RP60 GA	RP71 GA			
1	R01 29J 130	MOTOR LEG		1	1	1	1			
2	T7W 30J 762	FAN MOTOR	DO9C4P70MS	1	1	1	1		MF	
3	R01 700 116	SHAFT JOINT		1	1	1	1			
4	R01 43E 126	PIECE (MOTOR)		1	1	1	1			
5	R01 29J 114	SIROCCO FAN		2	2	2	2			
6	T7W 20J 675	FAN GUARD		1	1	1	1			
7	R01 E26 202	ROOM TEMPERATURE THERMISTOR		1	1	1	1		TH1	
8	R01 29J 100	SHAFT (FAN)		1	1	1	1			
9	T7W 21J 675	FAN GUARD		2	2	2	2			
10	R01 E00 103	SLEEVE BEARING		1	1	1	1			
11	R01 29J 145	BEARING SUPPORT		1	1	1	1			
12	R01 17J 524	DRAIN PLUG		1	1	1	1			
13	R01 A15 529	DRAIN PAN ASSY		1	1	1	1			
14	T7W 18J 675	FAN GUARD		1	1	1	1			
15	R01 17J 110	CASING		3	3	3	3			
16	R01 33J 114	SIROCCO FAN		1	1	1	1			
17	R01 20J 303	INSULATOR		1	1					
	R01 30J 303	INSULATOR		3	3					
18	T7W 30J 300	HEATER ELEMENT	80V 700W	3	3				H1	
19	R01 17J 202	PIPE TEMPERATURE THERMISTOR		1	1	1	1		TH2	
20	R01 E27 202	CONDENSER / EVAPORATOR TEMPERATURE THERMISTOR		1	1	1	1		TH5	
21	R01 H00 480	HEAT EXCHANGER		1	1		1			
	T7W K01 480	HEAT EXCHANGER				1				
22	T7W 23J 706	THERMAL FUSE	110°C 16A 250V	1	1				FS1,2	
23	R01 46K 700	THERMAL SWITCH	OFF:50°C ON:35°C	1	1				26H	

FAN AND HEATER PARTS
PCH-P100GAH
PCA-RP100GA



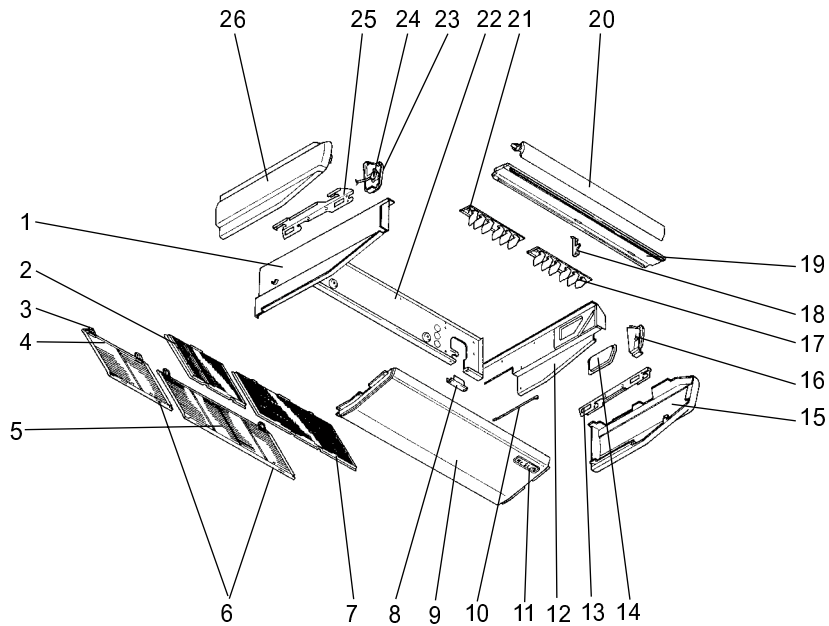
No.	Parts No.	Parts Name	Specifications	Q'ty / set		Remarks (Drawing No.)	Wiring Diagram Symbol	Recom- mended Q'ty
				PCH- P100GAH	PCA- RP100GA			
1	R01 43E 126	PIECE (MOTOR)		1	1			
2	R01 35J 130	MOTOR LEG		1	1			
3	R01 35J 220	FAN MOTOR	D10B4P90MS	1	1		MF	
4	R01 700 116	SHAFT JOINT		1	1			
5	R01 35J 114	SIROCCO FAN		2	2			
6	T7W 22J 675	FAN GUARD		1	1			
7	R01 E26 202	ROOM TEMPERATURE THERMISTOR		1	1		TH1	
8	R01 29J 100	SHAFT		1	1			
9	T7W 23J 675	FAN GUARD		2	2			
10	R01 E00 103	SLEEVE BEARING		1	1			
11	R01 35J 145	BEARING SUPPORT		1	1			
12	R01 17J 524	DRAIN PLUG		1	1			
13	R01 A16 529	DRAIN PAN ASSY		1	1			
14	T7W 24J 675	FAN GUARD		1	1			
15	R01 35J 110	CASING		3	3			
16	R01 39J 114	SIROCCO FAN		1	1			
17	R01 20J 303	INSULATOR		1				
	R01 36J 303	INSULATOR		3				
18	T7W 39J 300	HEATER ELEMENT	80V 900W	3			H1	
19	R01 17J 202	PIPE TEMPERATURE THERMISTOR		1	1		TH2	
20	R01 E27 202	CONDENSER / EVAPORATOR TEMPERATURE THERMISTOR		1	1		TH5	
21	R01 E33 480	HEAT EXCHANGER		1				
	T7W K02 480	HEAT EXCHANGER			1			
22	T7W 589 706	THERMAL FUSE	117°C 16A 250V	1			FS1,2	
23	R01 46K 700	THERMAL SWITCH	OFF:50°C ON:35°C	1			26H	

FAN AND HEATER PARTS
PCH-P125GAH, PCA-RP125GA
PCH-P140GAH, PCA-RP140GA



No.	Parts No.	Parts Name	Specifications	Q'ty / set				Remarks (Drawing No.)	Wiring Diagram Symbol	Recom- mended Q'ty
				PCH- P125 GAH	P140 GAH	PCA- RP125 GA	RP140 GA			
1	R01 29J 100	SHAFT		1	1	1	1			
2	R01 41J 130	MOTOR LEG		1	1	1	1			
3	R01 41J 220	FAN MOTOR	D10B4P150MS	1	1	1	1		MF	
4	R01 43E 126	PIECE (MOTOR)		1	1	1	1			
5	R01 41J 114	SIROCCO FAN		1	1	1	1			
6	T7W 26J 675	FAN GUARD		1	1	1	1			
7	R01 E26 202	ROOM TEMPERATURE THERMISTOR		1	1	1	1		TH1	
8	T7W 25J 675	FAN GUARD		1	1	1	1			
9	R01 35J 114	SIROCCO FAN		2	2	2	2			
10	R01 700 116	SHAFT JOINT		1	1	1	1			
11	R01 A17 529	DRAIN PAN ASSY		1	1	1	1			
12	T7W 23J 675	FAN GUARD		2	2	2	2			
13	R01 39J 114	SIROCCO FAN		1	1	1	1			
14	R01 17J 524	DRAIN PLUG		1	1	1	1			
15	T7W 24J 675	FAN GUARD		1	1	1	1			
16	R01 35J 110	CASING		4	4	4	4			
17	R01 E00 103	SLEEVE BEARING		1	1	1	1			
18	R01 35J 145	BEARING SUPPORT		1	1	1	1			
19	R01 20J 303	INSULATOR		1	1					
	R01 36J 303	INSULATOR		6	6					
20	T7W 43J 300	HEATER ELEMENT	80V 1000W	3	3				H1	
21	R01 17J 202	PIPE TEMPERATURE THERMISTOR		1	1	1	1		TH2	
22	R01 E27 202	CONDENSER / EVAPORATOR TEMPERATURE THERMISTOR		1	1	1	1		TH5	
23	T7W K03 480	HEAT EXCHANGER				1				
	T7W K04 480	HEAT EXCHANGER					1			
	T7W K05 480	HEAT EXCHANGER		1						
	T7W K06 480	HEAT EXCHANGER			1					
24	T7W 23J 706	THERMAL FUSE	110°C 16A 250V	1	1				FS1,2	
25	R01 46K 700	THERMAL SWITCH	OFF:50°C ON:35°C	1	1				26H	

STRUCTURAL PART
PCA-RP50GA
PCH-P50GAH

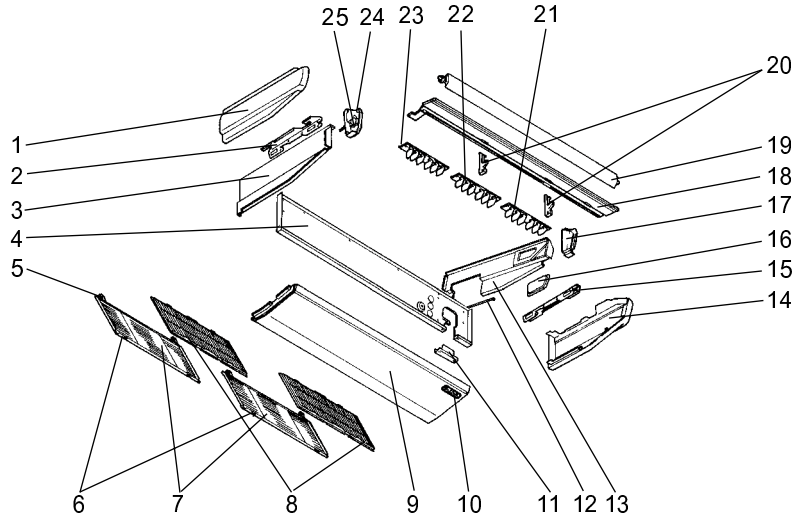


Part numbers that are circled are not shown in the figure.

No.	Parts No.	Parts Name	Specifications	Q'ty/set		Remarks (Drawing No.)	Wiring Diagram Symbol	Recom- mended Q'ty
				PCA-RP50GA	PCH-P50GAH			
1	R01 57N 666	S.PLATE-L		1				
2	R01 A15 500	L.L FILTER		1				
3	R01 17J 061	GRILLE HINGE		4				
4	R01 18J 691	GRILLE ASSY		1				
5	R01 17J 691	GRILLE ASSY		1				
6	R01 17J 054	GRILLE CATCH		4				
7	R01 A14 500	L.L FILTER		1				
8	—	REAR SUPPORT		1		(BG02H454K01)		
9	R01 17J 669	UNDER PANEL		1				
10	—	BEAM(GA)		2		(BG17H464H08)		
11	T7W E01 070	W.BOARD CASE		1				
12	R01 18J 665	S.PLATE-R		1				
13	R01 17J 808	RIGHT LEG (R)		1				
14	R01 17J 668	SERVICE PANEL		1				
15	R01 17J 661	RIGHT SIDE PANEL		1				
16	R01 17J 067	RIGHT SIDE BOX		1				
17	R01 37J 085	G.V ASSY-6R		1				
18	R01 E00 033	VANE SUPPORT		1				
19	R01 17J 651	FRONT PANEL		1				
20	R01 17J 002	AUTO VANE		1				
21	R01 37J 086	G.V ASSY-6L		1				
22	R01 A14 676	REAR PANEL		1				
23	R01 17J 068	LEFT SIDE BOX		1				
24	R01 E03 223	VANE MOTOR		1			MV	
25	R01 17J 809	LEFT LEG (L)		1				
26	R01 17J 662	LEFT SIDE PANEL		1				
27	R01 17J 523	JOINT SOCKET		1				
28	T7W E00 072	DRAIN HOSE COVER		1				

STRUCTURAL PART

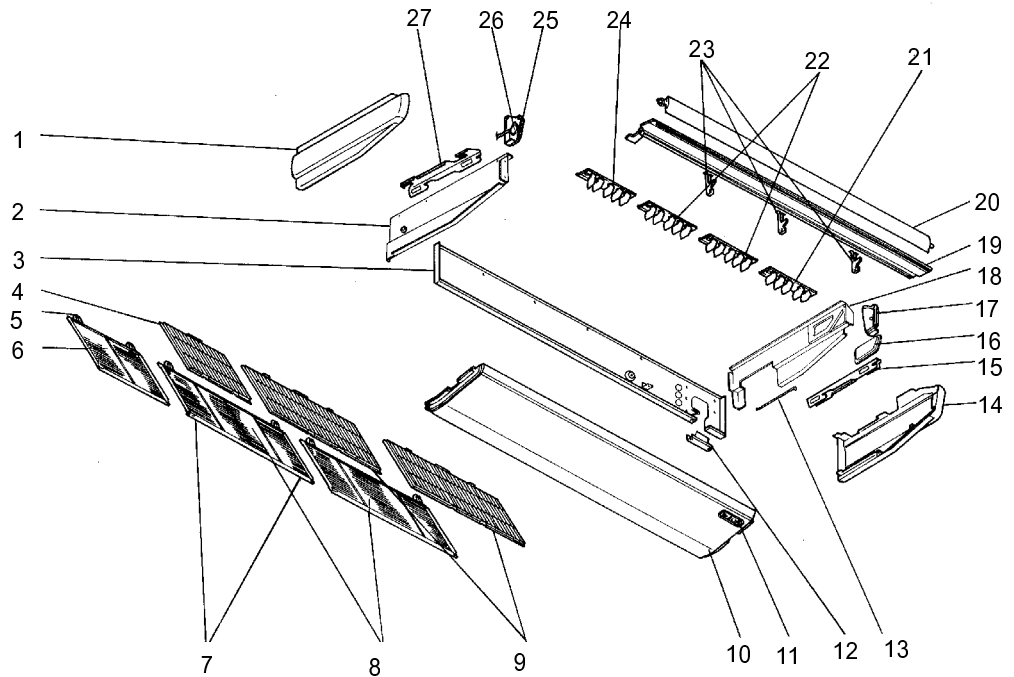
PCA-RP60GA
 PCA-RP71GA
 PCA-RP100GA
 PCH-P60GAH
 PCH-P71GAH
 PCH-P100GAH



Part numbers that are circled are not show in the figure.

No.	Parts No.	Parts Name	Specifications	Q'ty/set		Remarks (Drawing No.)	Wiring Diagram Symbol	Recom- mended Q'ty
				PCA-RP/PCH-P				
				60/71 GA/GAH	100			
1	R01 17J 662	LEFT SIDE PANEL		1				
	R01 35J 662	LEFT SIDE PANEL			1			
2	R01 17J 809	LEFT LEG		1	1			
3	R01 57N 666	S.PLATE-L		1				
	R01 35J 666	S.PLATE-L			1			
4	R01 A15 676	REAR PANEL		1				
	R01 A16 676	REAR PANEL			1			
5	R01 17J 061	GRILLE HINGE		4	4			
6	R01 17J 054	GRILLE CATCH		4	4			
7	R01 17J 691	GRILLE ASSY		2	2			
8	R01 A14 500	L.L FILTER		2	2			
9	R01 29J 669	UNDER PANEL		1	1			
10	T7W E01 070	W.BOARD CASE		1	1			
11	—	REAR SUPPORT		1	1	(BG02H454K01)		
12	—	BEAM (GA)		2	2	(BG17H464H08)		
13	R01 18J 665	S.PLATE-R		1				
	R01 E00 665	S.PLATE-R			1			
14	R01 17J 661	RIGHT SIDE PANEL		1				
	R01 35J 661	RIGHT SIDE PANEL			1			
15	R01 17J 808	RIGHT LEG		1	1			
16	R01 17J 668	SERVICE PANEL		1				
	R01 18J 668	SERVICE PANEL			1			
17	R01 17J 067	RIGHT SIDE BOX		1				
	R01 35J 067	RIGHT SIDE BOX			1			
18	R01 29J 651	FRONT PANEL		1				
	R01 36J 651	FRONT PANEL			1			
19	R01 29J 002	AUTO VANE		1				
	R01 E03 002	AUTO VANE			1			
20	R01 E00 033	VANE SUPPORT		2				
	R01 E01 033	VANE SUPPORT			2			
21	R01 37J 085	G.V ASSY-6R		1	1			
22	R01 37J 087	G.V ASSY-6C		1	1			
23	R01 37J 086	G.V ASSY-6L		1	1			
24	R01 17J 068	LEFT SIDE BOX		1				
	R01 E00 068	LEFT SIDE BOX			1			
25	R01 29J 223	VANE MOTOR		1			MV	
	R01 35J 223	VANE MOTOR			1		MV	
26	R01 17J 523	JOINT SOCKET		1	1			
27	T7W E00 072	DRAIN HOSE COVER		1	1			

STRUCTURAL PART
PCA-RP125GA
PCA-RP140GA
PCH-P125GAH
PCH-P140GAH



Part numbers that are circled are not shown in the figure.

No.	Parts No.	Parts Name	Specifications	Q'ty/set		Remarks (Drawing No.)	Wiring Diagram Symbol	Recom- mended Q'ty
				PCA-RP125/140GA	PCH-P125/140GAH			
1	R01 35J 662	LEFT SIDE PANEL		1				
2	R01 35J 666	S.PLATE-L		1				
3	R01 A17 676	REAR PANEL		1				
4	R01 A15 500	L.L FILTER		1				
5	R01 17J 061	GRILLE HINGE		6				
6	R01 18J 691	GRILLE ASSY		1				
7	R01 17J 054	GRILLE CATCH		6				
8	R01 17J 691	GRILLE ASSY		2				
9	R01 A14 500	L.L FILTER		2				
10	R01 41J 669	UNDER PANEL		1				
11	T7W E01 070	W.BOARD CASE		1				
12	—	REAR SUPPORT		1		(BG02H454K01)		
13	—	BEAM(GA)		3		(BG17H464H08)		
14	R01 35J 661	RIGHT SIDE PANEL		1				
15	R01 17J 808	RIGHT LEG		1				
16	R01 18J 668	SERVICE PANEL		1				
17	R01 35J 067	RIGHT SIDE BOX		1				
18	R01 E00 665	S.PLATE-R		1				
19	R01 41J 651	FRONT PANEL		1				
20	R01 E04 002	AUTO VANE		1				
21	R01 41J 085	G.V ASSY-5R		1				
22	R01 43J 087	G.V ASSY-5C		2				
23	R01 E01 033	VANE SUPPORT		3				
24	R01 42J 086	G.V ASSY-5L		1				
25	R01 E00 068	LEFT SIDE BOX		1				
26	R01 35J 223	VANE MOTOR		1			MV	
27	R01 17J 809	LEFT LEG		1				
⑳	R01 17J 523	JOINT SOCKET		1				
㉑	T7W E00 072	DRAIN HOSE COVER		1				

ELECTRICAL PARTS

PCA-RP50GA

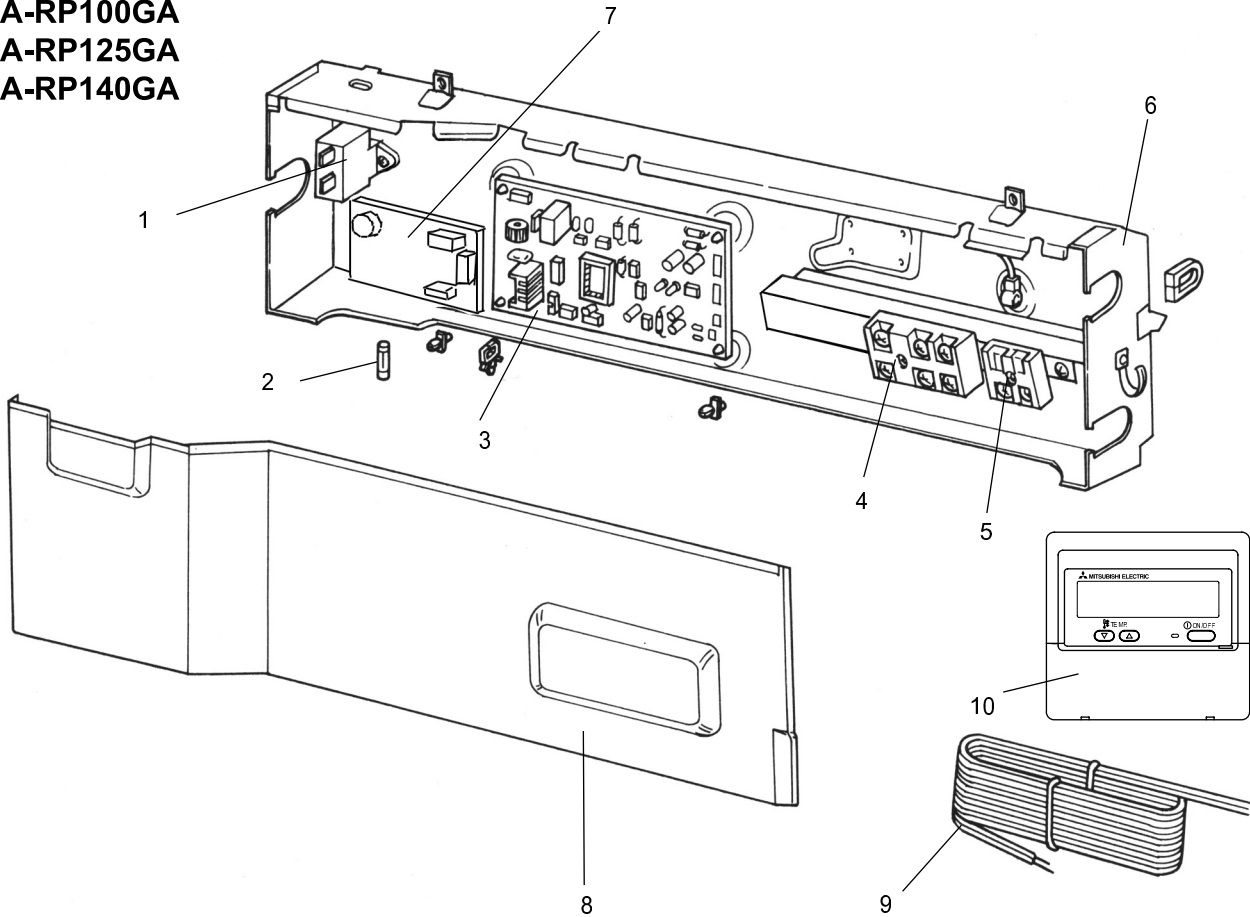
PCA-RP60GA

PCA-RP71GA

PCA-RP100GA

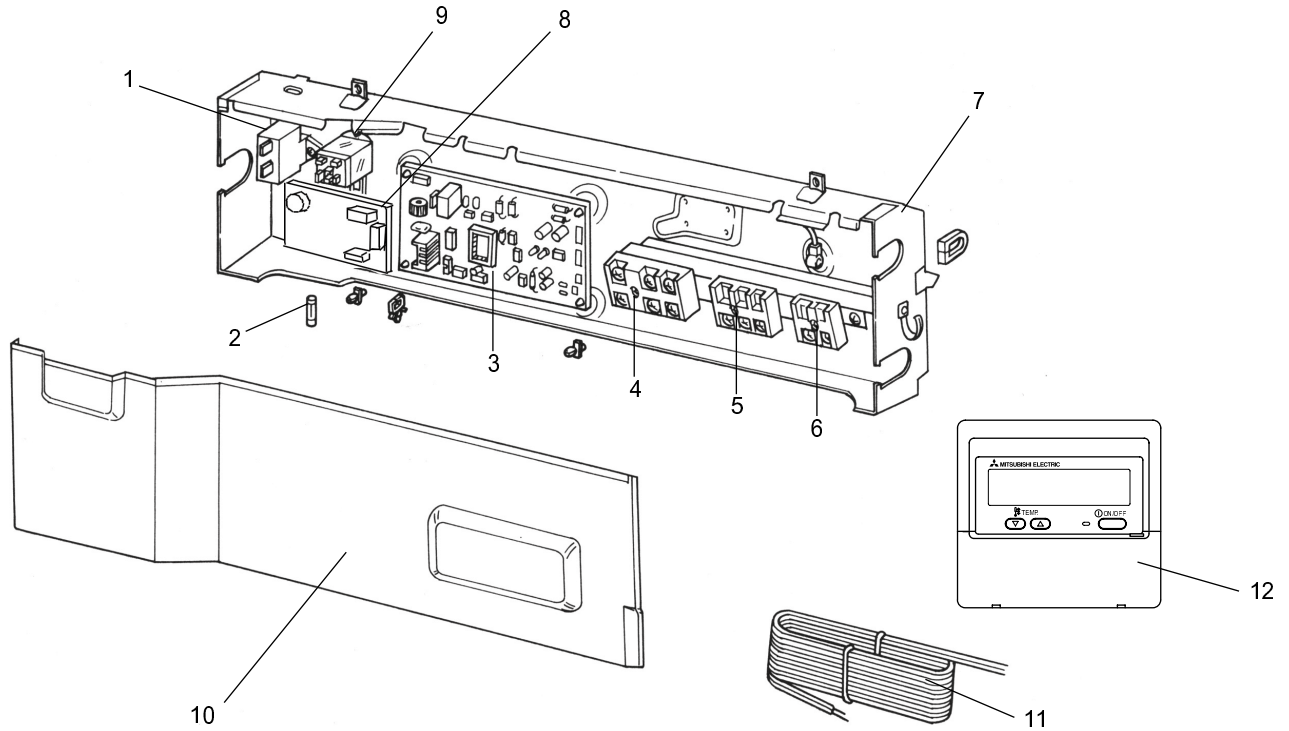
PCA-RP125GA

PCA-RP140GA



No.	Parts No.	Parts Name	Specifications	Q'ty				Remarks (Drawing No.)	Wiring Diagram Symbol	Recom- mended Q'ty
				PCA-RP						
				50	60/71	100	125/140			
				GA						
1	R01 30L 255	CAPACITOR	3 μ F 440V	1					C	
	T7W 39J 255	CAPACITOR	4 μ F 440V		1	1			C	
	R01 A13 255	CAPACITOR	6 μ F 440V				1		C	
2	R01 E02 239	FUSE	250V 6.3A	1	1	1	1		FUSE	
3	T7W E40 310	INDOOR CONTROLLER BOARD		1	1	1	1		I.B	
4	T7W E23 716	TERMINAL BLOCK	3P(S1,S2,S3)	1	1	1	1		TB4	
5	T7W 512 716	TERMINAL BLOCK	2P(1,2)	1	1	1	1		TB5	
6	—	CONTROL BOX		1	1	1	1	(BG00N015G31)		
7	R01 E02 313	POWER BOARD		1	1	1	1		P.B	
8	—	CONTROL COVER		1				(BG02A804G27)		
	—	CONTROL COVER			1		1	(BG02A804G28)		
	—	CONTROL COVER				1		(BG02A804G29)		
9	T7W A00 305	REMOTE CONTROLLER CORD		1	1	1	1			
10	T7W E08 713	REMOTE CONTROLLER	PAR-21MAA	1	1	1	1		R.B	

ELECTRICAL PARTS
PCH-P50GAH, PCH-P100GAH
PCH-P60GAH, PCH-P125GAH
PCH-P71GAH, PCH-P140GAH



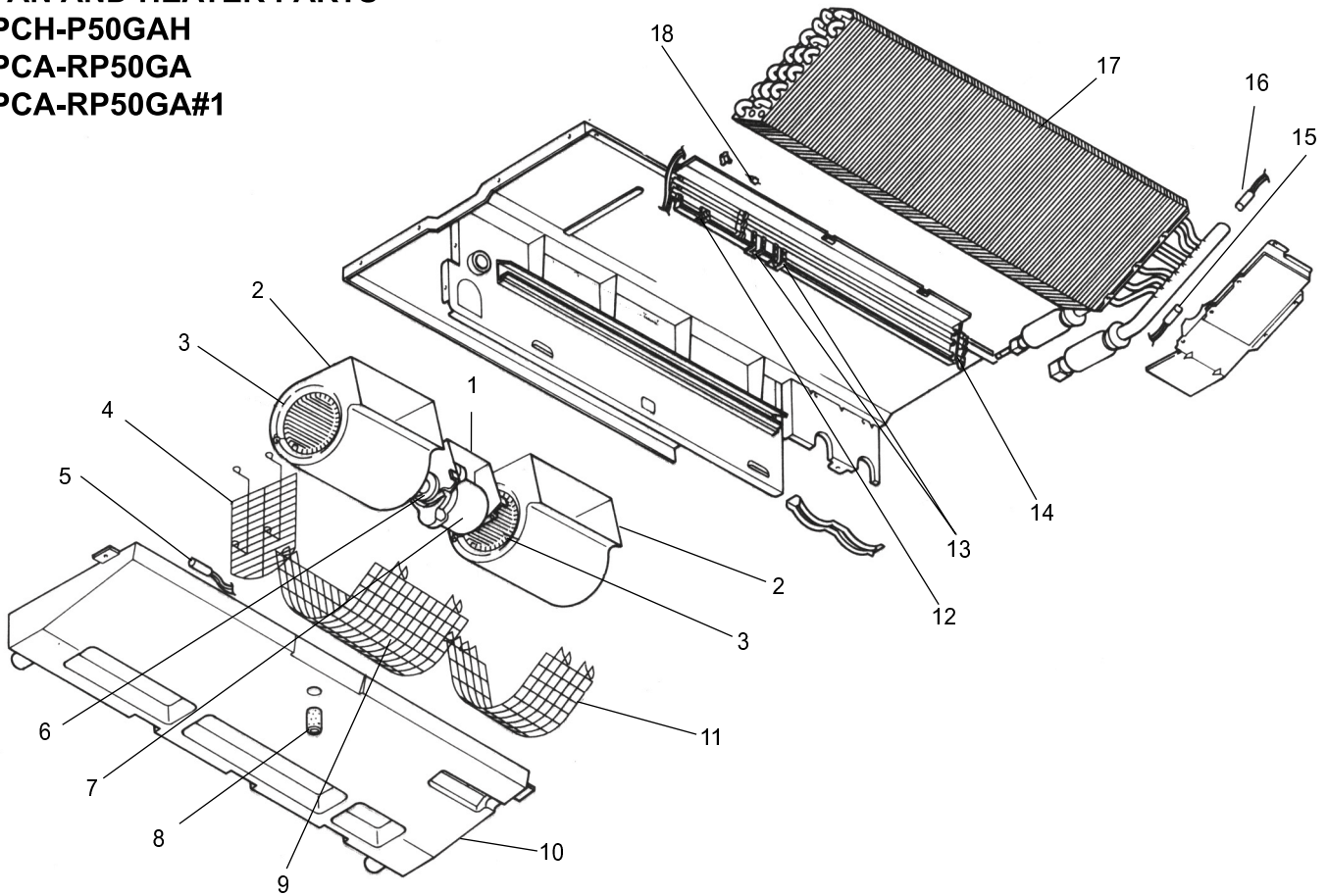
No.	Parts No.	Parts Name	Specifications	Q'ty / set				Remarks (Drawing No.)	Wiring Diagram Symbol	Recom- mended Q'ty
				PCH-P						
				50	60/71	100	125/140			
				GAH						
1	R01 30L 255	CAPACITOR	3 μ F 440V	1					C	
	T7W 39J 255	CAPACITOR	4 μ F 440V		1	1			C	
	R01 A13 255	CAPACITOR	6 μ F 440V				1		C	
2	R01 E02 239	FUSE	250V 6.3A	1	1	1	1		FUSE	
3	T7W E40 310	INDOOR CONTROLLER BOARD		1	1	1	1		I.B	
4	T7W A14 716	TERMINAL BLOCK	3P (L,N, \oplus)	1	1	1	1		TB2	
5	T7W E23 716	TERMINAL BLOCK	3P (S1,S2,S3)	1	1	1	1		TB4	
6	T7W 512 716	TERMINAL BLOCK	2P (1,2)	1	1	1	1		TB5	
7	—	CONTROL BOX		1	1	1	1	(BG00N015G32)		
8	R01 E02 313	POWER BOARD		1	1	1	1		P.B	
9	R01 71G 215	RELAY	JC-1A DC12V	1	1	1	1		88H	
10	—	CONTROL COVER		1				(BG02A804G27)		
	—	CONTROL COVER			1		1	(BG02A804G28)		
	—	CONTROL COVER				1		(BG02A804G29)		
11	T7W A00 305	REMOTE CONTROLLER CORD	10m	1	1	1	1			
12	T7W E08 713	REMOTE CONTROLLER	PAR-21MAA	1	1	1	1		R.B	

FAN AND HEATER PARTS

PCH-P50GAH

PCA-RP50GA

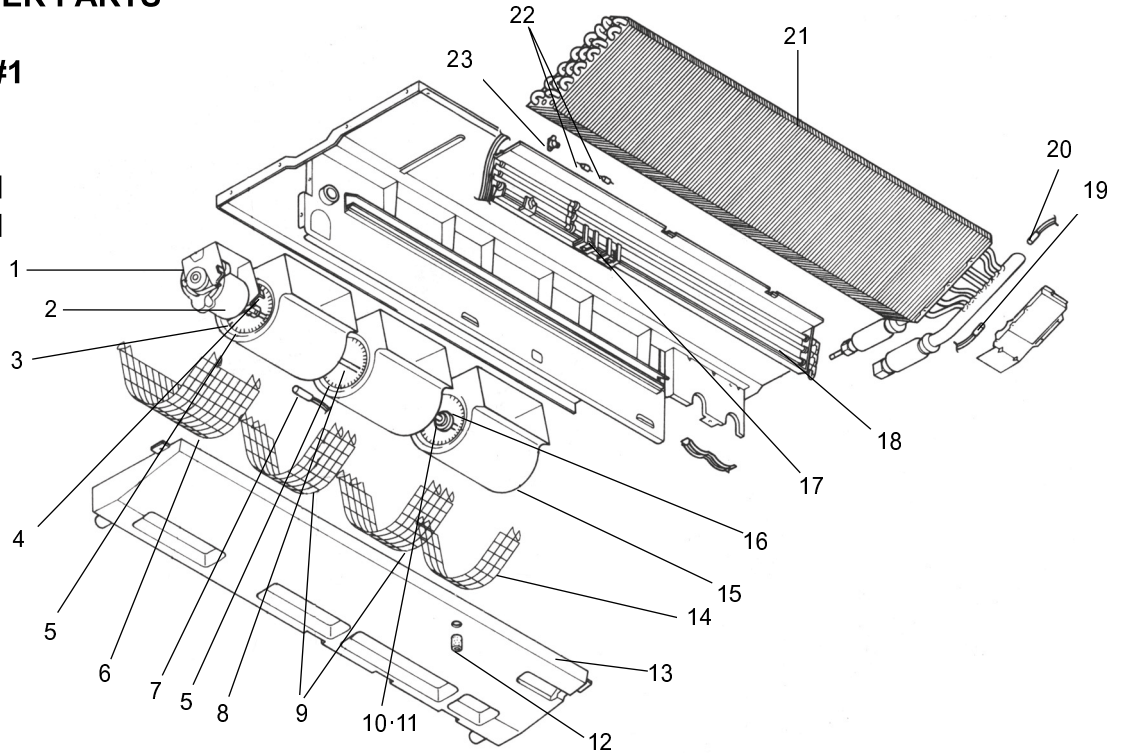
PCA-RP50GA#1



No.	RoHS	Parts No.	Parts Name	Specifications	Q'ty / set			Remarks (Drawing No.)	Wiring Diagram Symbol	Recom- mended Q'ty
					PCH-P	PCA-RP				
					50GAH	50GA	50GA#1			
1	G	R01 31J 130	MOTOR LEG		1	1	1			
2	G	R01 18J 110	CASING		2	2	2			
3	G	R01 E16 114	SIROCCO FAN		2	2	2			
4	G	T7W 31J 675	FAN GUARD		1	1	1			
5	G	R01 H08 202	ROOM TEMPERATURE THERMISTOR		1	1	1		TH1	
6	G	R01 45E 126	PIECE (MOTOR)		1	1	1			
7	G	R01 18J 220	FAN MOTOR	D09B4P54MS	1	1	1		MF	
8	G	R01 18J 524	DRAIN PLUG		1	1	1			
9	G	T7W 30J 675	FAN GUARD		1	1	1			
10	G	R01 E27 529	DRAIN PAN ASSY		1	1	1			
11	G	T7W 29J 675	FAN GUARD		1	1	1			
12	G	R01 E13 700	THERMAL SWITCH	OFF:50°C ON:35°C	1				26H	
13	G	R01 21J 303	INSULATOR		3					
	G	R01 31J 303	INSULATOR		1					
14	G	T7W E21 300	HEATER ELEMENT	80V 467W	3				H1	
15	G	R01 H10 202	PIPE TEMPERATURE THERMISTOR		1	1	1		TH2	
16	G	R01 H09 202	CONDENSER / EVAPORATOR TEMPERATURE THERMISTOR		1	1	1		TH5	
17	G	R01 N08 480	HEAT EXCHANGER		1					
	G	T7W H41 480	HEAT EXCHANGER			1	1			
18	G	R01 P03 706	THERMAL FUSE	250V 98°C 10A	1				FS1,2	

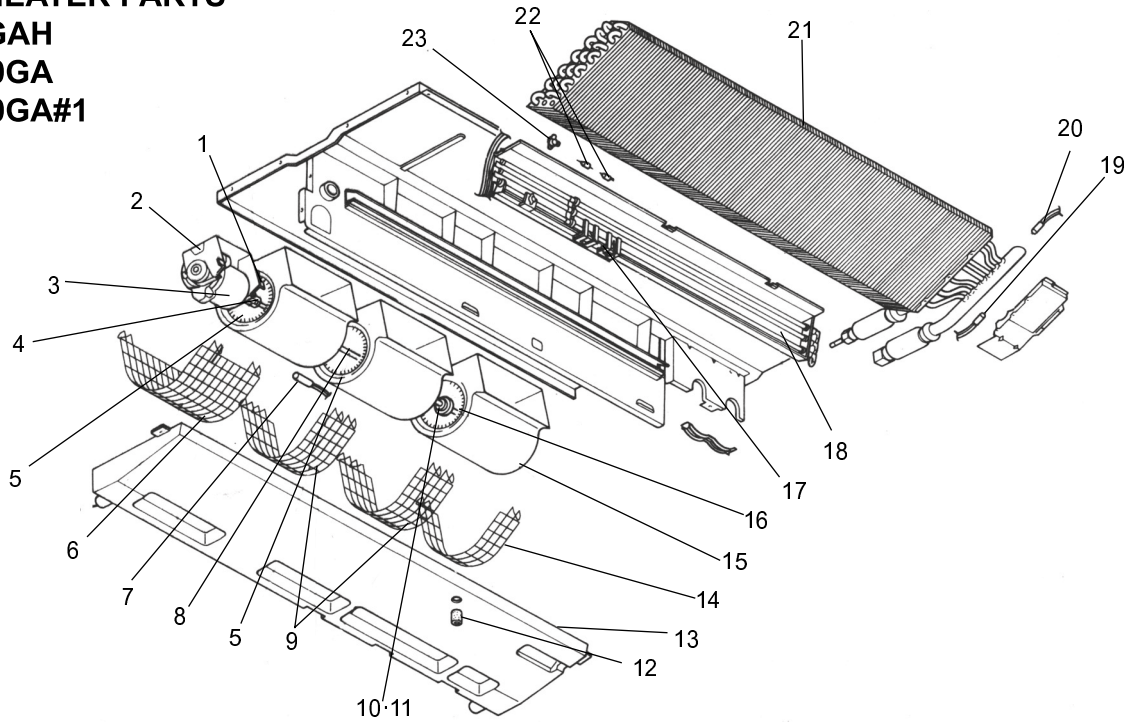
FAN AND HEATER PARTS

PCA-RP50GA2
 PCA-RP50GA2#1
 PCA-RP60GA
 PCA-RP71GA
 PCA-RP60GA#1
 PCA-RP71GA#1
 PCH-P60GAH
 PCH-P71GAH



No.	RoHS	Parts No.	Parts Name	Specifications	Q'ty / set					Remarks (Drawing No.)	Wiring Diagram Symbol	Recom- mended Q'ty
					PCH- P		PCA- RP					
					60GAH	71GAH	50GA2 50GA2#1	60GA 60GA#1	71GA 71GA#1			
1	G	R01 30J 130	MOTOR LEG		1	1	1	1	1			
2	G	T7W 40J 762	FAN MOTOR	DO9C4P70MS	1	1	1	1	1		MF	
3	G	R01 800 116	SHAFT JOINT		1	1	1	1	1			
4	G	R01 45E 126	PIECE (MOTOR)		1	1	1	1	1			
5	G	R01 E17 114	SIROCCO FAN		2	2	2	2	2			
6	G	T7W 29J 675	FAN GUARD		1	1	1	1	1			
7	G	R01 H08 202	ROOM TEMPERATURE THERMISTOR		1	1	1	1	1		TH1	
8	G	R01 30J 100	SHAFT (FAN)		1	1	1	1	1			
9	G	T7W 28J 675	FAN GUARD		2	2	2	2	2			
10	G	R01 E02 103	SLEEVE BEARING		1	1	1	1	1			
11	G	R01 30J 145	BEARING SUPPORT		1	1	1	1	1			
12	G	R01 18J 524	DRAIN PLUG		1	1	1	1	1			
13	G	R01 A18 529	DRAIN PAN ASSY		1	1	1	1	1			
14	G	T7W 27J 675	FAN GUARD		1	1	1	1	1			
15	G	R01 18J 110	CASING		3	3	3	3	3			
16	G	R01 E15 114	SIROCCO FAN		1	1	1	1	1			
17	G	R01 31J 303	INSULATOR		1	1						
	G	R01 40J 303	INSULATOR		3	3						
18	G	T7W E11 300	HEATER ELEMENT	80V 700W	3	3					H1	
19	G	R01 H10 202	PIPE TEMPERATURE THERMISTOR		1	1	1	1	1		TH2	
21	G	R01 H09 202	CONDENSER / EVAPORATOR TEMPERATURE THERMISTOR		1	1	1	1	1		TH5	
	G	R01 J66 480	HEAT EXCHANGER		1	1			1			
	G	T7W H42 480	HEAT EXCHANGER					1				
22	G	T7W H37 480	HEAT EXCHANGER				1					
	G	T7W H37 480	HEAT EXCHANGER				1					
22	G	T7W 25J 706	THERMAL FUSE	110°C 16A 250V	1	1					FS1,2	
23	G	R01 E13 700	THERMAL SWITCH	OFF:50°C ON:35°C	1	1					26H	

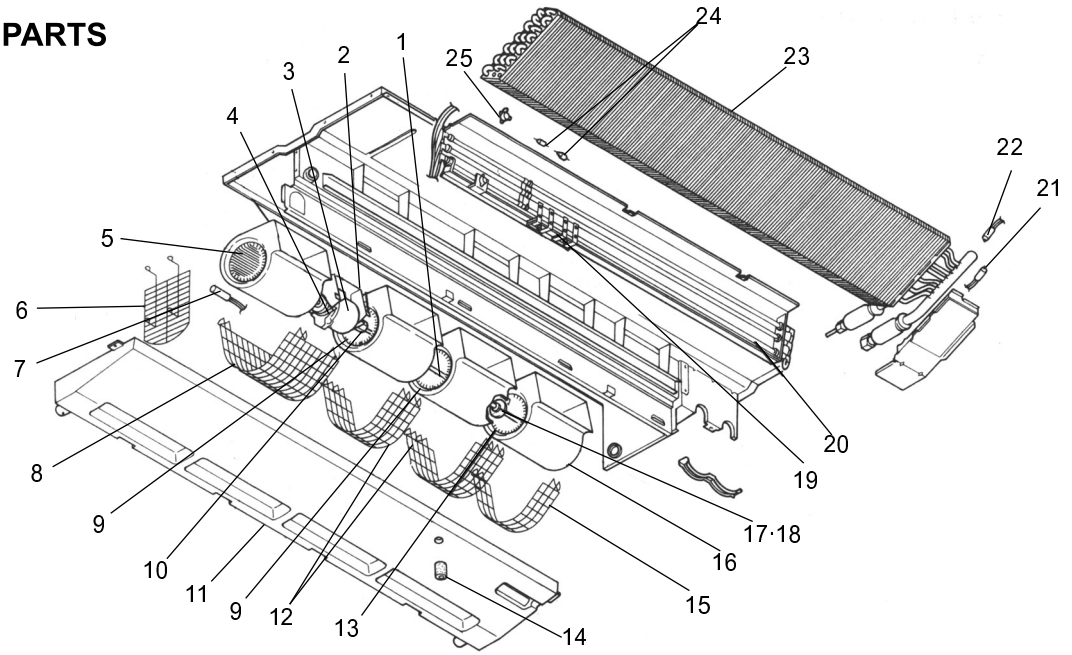
FAN AND HEATER PARTS
PCH-P100GAH
PCA-RP100GA
PCA-RP100GA#1



No.	RCHS	Parts No.	Parts Name	Specifications	Q'ty / set			Remarks (Drawing No.)	Wiring Diagram Symbol	Recom- mended Q'ty
					PCH-P	PCA-RP				
					100GAH	100GA	100GA#1			
1	G	R01 45E 126	PIECE (MOTOR)		1	1	1			
2	G	R01 32J 130	MOTOR LEG		1	1	1			
3	G	R01 19J 220	FAN MOTOR	D10B4P90MS	1	1	1		MF	
4	G	R01 800 116	SHAFT JOINT		1	1	1			
5	G	R01 E19 114	SIROCCO FAN		2	2	2			
6	G	T7W 35J 675	FAN GUARD		1	1	1			
7	G	R01 H08 202	ROOM TEMPERATURE THERMISTOR		1	1	1		TH1	
8	G	R01 30J 100	SHAFT		1	1	1			
9	G	T7W 34J 675	FAN GUARD		2	2	2			
10	G	R01 E02 103	SLEEVE BEARING		1	1	1			
11	G	R01 36J 145	BEARING SUPPORT		1	1	1			
12	G	R01 18J 524	DRAIN PLUG		1	1	1			
13	G	R01 E28 529	DRAIN PAN ASSY		1	1	1			
14	G	T7W 32J 675	FAN GUARD		1	1	1			
15	G	R01 19J 110	CASING		3	3	3			
16	G	R01 E20 114	SIROCCO FAN		1	1	1			
17	G	R01 31J 303	INSULATOR		1					
	G	R01 41J 303	INSULATOR		3					
18	G	T7W E22 300	HEATER ELEMENT	80V 900W	3				H1	
19	G	R01 H10 202	PIPE TEMPERATURE THERMISTOR		1	1	1		TH2	
20	G	R01 H09 202	CONDENSER / EVAPORATOR TEMPERATURE THERMISTOR		1	1	1		TH5	
21	G	R01 N09 480	HEAT EXCHANGER		1					
	G	T7W H43 480	HEAT EXCHANGER			1	1			
22	G	T7W 11G 706	THERMAL FUSE	117°C 16A 250V	1				FS1,2	
23	G	R01 E13 700	THERMAL SWITCH	OFF:50°C ON:35°C	1				26H	

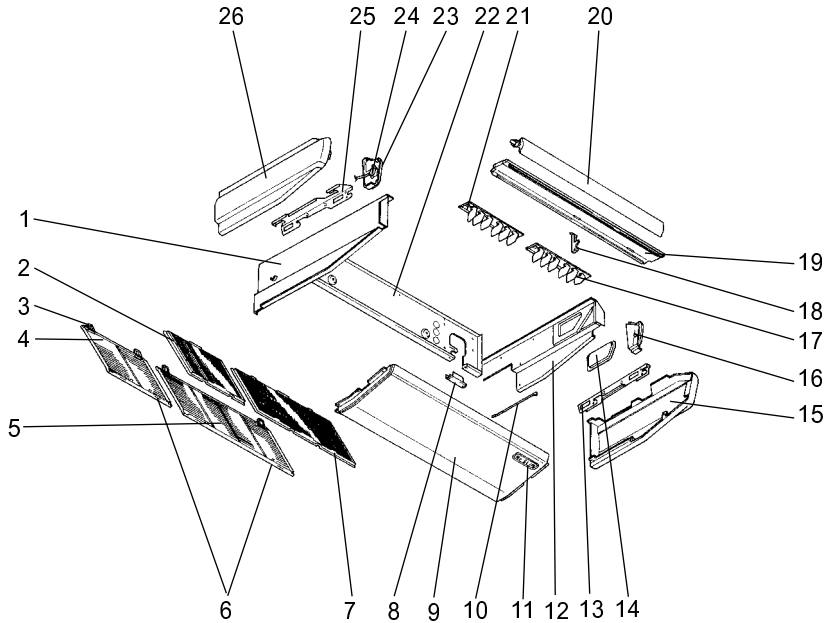
FAN AND HEATER PARTS

PCA-RP125GA
 PCA-RP140GA
 PCA-RP125GA#1
 PCA-RP140GA#1
 PCH-P125GAH
 PCH-P140GAH



No.	RoHS	Parts No.	Parts Name	Specifications	Q'ty / set				Remarks (Drawing No.)	Wiring Diagram Symbol	Recom- mended Q'ty
					PCH- P		PCA- RP				
					125GAH	140GAH	125GA 125GA#1	140GA 140GA#1			
1	G	R01 30J 100	SHAFT		1	1	1	1			
2	G	R01 33J 130	MOTOR LEG		1	1	1	1			
3	G	R01 20J 220	FAN MOTOR	D10B4P150MS	1	1	1	1		MF	
4	G	R01 45E 126	PIECE (MOTOR)		1	1	1	1			
5	G	R01 E18 114	SIROCCO FAN		1	1	1	1			
6	G	T7W 35J 675	FAN GUARD		1	1	1	1			
7	G	R01 H08 202	ROOM TEMPERATURE THERMISTOR		1	1	1	1		TH1	
8	G	T7W 33J 675	FAN GUARD		1	1	1	1			
9	G	R01 E19 114	SIROCCO FAN		2	2	2	2			
10	G	R01 800 116	SHAFT JOINT		1	1	1	1			
11	G	R01 E29 529	DRAIN PAN ASSY		1	1	1	1			
12	G	T7W 34J 675	FAN GUARD		2	2	2	2			
13	G	R01 E20 114	SIROCCO FAN		1	1	1	1			
14	G	R01 18J 524	DRAIN PLUG		1	1	1	1			
15	G	T7W 36J 675	FAN GUARD		1	1	1	1			
16	G	R01 19J 110	CASING		4	4	4	4			
17	G	R01 E02 103	SLEEVE BEARING		1	1	1	1			
18	G	R01 36J 145	BEARING SUPPORT		1	1	1	1			
19	G	R01 31J 303	INSULATOR		1	1					
	G	R01 41J 303	INSULATOR		6	6					
20	G	T7W E12 300	HEATER ELEMENT	80V 1000W	3	3				H1	
21	G	R01 H10 202	PIPE TEMPERATURE THERMISTOR		1	1	1	1		TH2	
22	G	R01 H09 202	CONDENSER / EVAPORATOR TEMPERATURE THERMISTOR		1	1	1	1		TH5	
23	G	T7W H44 480	HEAT EXCHANGER				1				
	G	T7W H45 480	HEAT EXCHANGER					1			
	G	T7W H46 480	HEAT EXCHANGER		1						
	G	T7W H47 480	HEAT EXCHANGER			1					
24	G	T7W 25J 706	THERMAL FUSE	110°C 16A 250V	1	1				FS1,2	
25	G	R01 E13 700	THERMAL SWITCH	OFF:50°C ON:35°C	1	1				26H	

STRUCTURAL PART
PCA-RP50GA
PCA-RP50GA#1
PCH-P50GAH

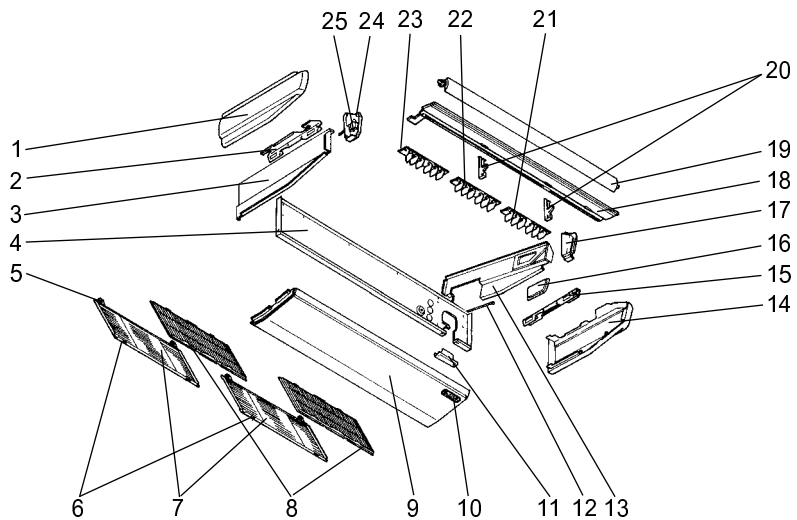


Part numbers that are circled are not shown in the figure.

No.	RoHS	Parts No.	Parts Name	Specifications	Q'ty/set		Remarks (Drawing No.)	Wiring Diagram Symbol	Recom- mended Q'ty
					PCA-RP50GA PCH-P50GAH	PCA-RP50GA#1			
1	G	R01 E00 666	S.PLATE-L		1	1			
2	G	R01 A30 500	L.L FILTER		1	1			
3	G	R01 18J 061	GRILLE HINGE		4	4			
4	G	R01 20J 691	GRILLE ASSY		1	1			
5	G	R01 19J 691	GRILLE ASSY		1	1			
6	G	R01 19J 054	GRILLE CATCH		4	4			
7	G	R01 A29 500	L.L FILTER		1	1			
8	G	—	REAR SUPPORT		1	1	(BG02H454K01)		
9	G	R01 31J 669	UNDER PANEL		1	1			
10	G	—	BEAM(GA)		2	2	(BG17H464H08)		
11	G	T7W E02 070	W.BOARD CASE		1	1			
12	G	R01 19J 665	S.PLATE-R		1	1			
13	G	R01 18J 808	RIGHT LEG (R)		1	1			
14	G	R01 19J 668	SERVICE PANEL		1	1			
15	G	R01 18J 661	RIGHT SIDE PANEL		1	1			
16	G	R01 18J 067	RIGHT SIDE BOX		1	1			
17	G	R01 38J 085	G.V ASSY-6R		1	1			
18	G	R01 E02 033	VANE SUPPORT		1	1			
19	G	R01 37J 651	FRONT PANEL		1	1			
20	G	R01 31J 002	AUTO VANE		1	1			
21	G	R01 38J 086	G.V ASSY-6L		1	1			
22	G	R01 A18 676	REAR PANEL		1	1			
23	G	R01 18J 068	LEFT SIDE BOX		1	1			
24	G	R01 E11 223	VANE MOTOR		1	1		MV	
25	G	R01 18J 809	LEFT LEG (L)		1	1			
26	G	R01 18J 662	LEFT SIDE PANEL		1	1			
⑳	G	R01 18J 523	JOINT SOCKET		1	1			
㉑	G	T7W E01 072	DRAIN HOSE COVER		1				
㉒	G	R01 18J 072	DRAIN HOSE COVER			1			

STRUCTURAL PART

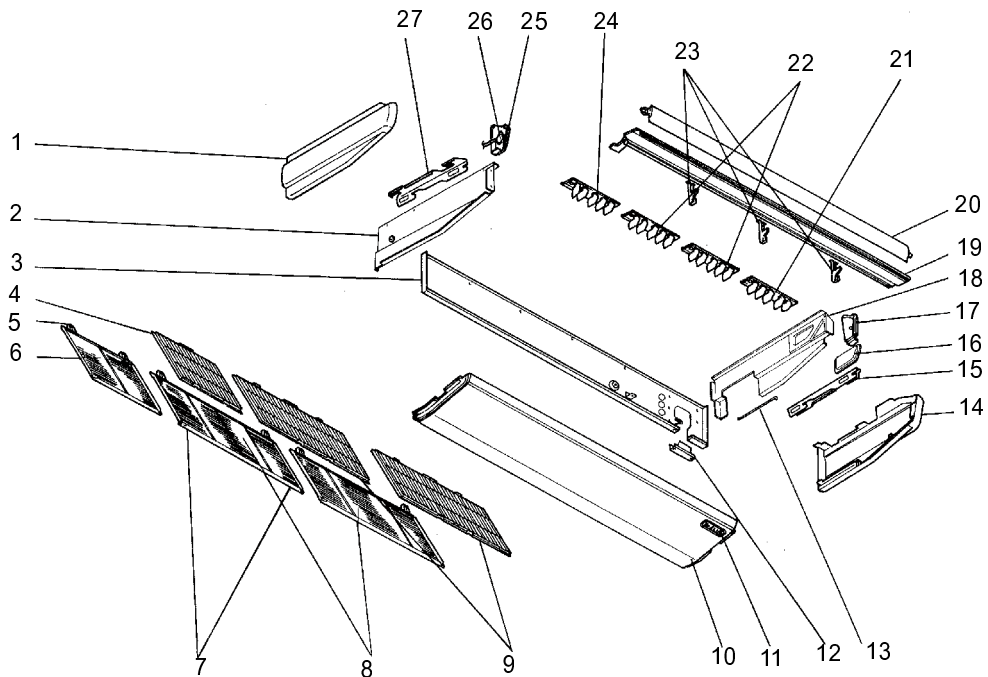
- PCA-RP50GA2
- PCA-RP50GA2#1
- PCA-RP60GA
- PCA-RP71GA
- PCA-RP100GA
- PCA-RP60GA#1
- PCA-RP71GA#1
- PCA-RP100GA#1
- PCH-P60GAH
- PCH-P71GAH
- PCH-P100GAH



Part numbers that are circled are not show in the figure.

No.	R/HS	Parts No.	Parts Name	Specifi- cations	Q'ty/set						Remarks (Drawing No.)	Wiring Diagram Symbol	Recom- mended Q'ty
					PCA-RP/PCH-P								
					50		60/71		100				
		GA2	GA2#1	GA/GAH	GA#1	GA/GAH	GA#1						
1	G	R01 18J 662	LEFT SIDE PANEL		1	1	1	1					
	G	R01 36J 662	LEFT SIDE PANEL					1	1				
2	G	R01 18J 809	LEFT LEG		1	1	1	1	1	1			
3	G	R01 E00 666	S.PLATE-L		1	1	1	1					
	G	R01 E01 666	S.PLATE-L					1	1				
4	G	R01 30J 676	REAR PANEL		1	1	1	1					
	G	R01 A21 676	REAR PANEL					1	1				
5	G	R01 18J 061	GRILLE HINGE		4	4	4	4	4	4			
6	G	R01 19J 054	GRILLE CATCH		4	4	4	4	4	4			
7	G	R01 19J 691	GRILLE ASSY		2	2	2	2	2	2			
8	G	R01 A29 500	L.L FILTER		2	2	2	2	2	2			
9	G	R01 30J 669	UNDER PANEL		1	1	1	1	1	1			
10	G	T7W E02 070	W.BOARD CASE		1	1	1	1	1	1			
11	G	—	REAR SUPPORT		1	1	1	1	1	1	(BG02H454K01)		
12	G	—	BEAM (GA)		2	2	2	2	2	2	(BG17H464H08)		
13	G	R01 19J 665	S.PLATE-R		1	1	1	1					
	G	R01 E01 665	S.PLATE-R					1	1				
14	G	R01 18J 661	RIGHT SIDE PANEL		1	1	1	1					
	G	R01 36J 661	RIGHT SIDE PANEL					1	1				
15	G	R01 18J 808	RIGHT LEG		1	1	1	1	1	1			
16	G	R01 19J 668	SERVICE PANEL		1	1	1	1					
	G	R01 20J 668	SERVICE PANEL					1	1				
17	G	R01 18J 067	RIGHT SIDE BOX		1	1	1	1					
	G	R01 36J 067	RIGHT SIDE BOX					1	1				
18	G	R01 30J 651	FRONT PANEL		1	1	1	1					
	G	R01 38J 651	FRONT PANEL					1	1				
19	G	R01 30J 002	AUTO VANE		1	1	1	1					
	G	R01 E14 002	AUTO VANE					1	1				
20	G	R01 E02 033	VANE SUPPORT		2	2	2	2					
	G	R01 E03 033	VANE SUPPORT					2	2				
21	G	R01 38J 085	G.V ASSY-6R		1	1	1	1	1	1			
22	G	R01 38J 087	G.V ASSY-6C		1	1	1	1	1	1			
23	G	R01 38J 086	G.V ASSY-6L		1	1	1	1	1	1			
24	G	R01 18J 068	LEFT SIDE BOX		1	1	1	1					
	G	R01 E01 068	LEFT SIDE BOX					1	1				
25	G	R01 E10 223	VANE MOTOR		1	1	1	1			MV		
	G	R01 E12 223	VANE MOTOR					1	1		MV		
26	G	R01 18J 523	JOINT SOCKET		1	1	1	1	1	1			
27	G	T7W E01 072	DRAIN HOSE COVER		1		1	1					
	G	R01 18J 072	DRAIN HOSE COVER			1	1	1					

STRUCTURAL PART
PCA-RP125GA
PCA-RP140GA
PCA-RP125GA#1
PCA-RP140GA#1
PCH-P125GAH
PCH-P140GAH



Part numbers that are circled are not shown in the figure.

No.	ROHS	Parts No.	Parts Name	Specifications	Q'ty/set		Remarks (Drawing No.)	Wiring Diagram Symbol	Recom- mended Q'ty
					PCA-RP125/140GA PCH-P125/140GAH	PCA-RP125/140GA#1			
1	G	R01 36J 662	LEFT SIDE PANEL		1	1			
2	G	R01 E01 666	S.PLATE-L		1	1			
3	G	R01 A19 676	REAR PANEL		1	1			
4	G	R01 A30 500	L.L FILTER		1	1			
5	G	R01 18J 061	GRILLE HINGE		6	6			
6	G	R01 20J 691	GRILLE ASSY		1	1			
7	G	R01 19J 054	GRILLE CATCH		6	6			
8	G	R01 19J 691	GRILLE ASSY		2	2			
9	G	R01 A29 500	L.L FILTER		2	2			
10	G	R01 32J 669	UNDER PANEL		1	1			
11	G	T7W E02 070	W.BOARD CASE		1	1			
12	G	—	REAR SUPPORT		1	1	(BG02H454K01)		
13	G	—	BEAM (GA)		3	3	(BG17H464H08)		
14	G	R01 36J 661	RIGHT SIDE PANEL		1	1			
15	G	R01 18J 808	RIGHT LEG		1	1			
16	G	R01 20J 668	SERVICE PANEL		1	1			
17	G	R01 36J 067	RIGHT SIDE BOX		1	1			
18	G	R01 E01 665	S.PLATE-R		1	1			
19	G	R01 39J 651	FRONT PANEL		1	1			
20	G	R01 E15 002	AUTO VANE		1	1			
21	G	R01 39J 085	G.V ASSY-5R		1	1			
22	G	R01 39J 087	G.V ASSY-5C		2	2			
23	G	R01 E03 033	VANE SUPPORT		3	3			
24	G	R01 39J 086	G.V ASSY-5L		1	1			
25	G	R01 E01 068	LEFT SIDE BOX		1	1			
26	G	R01 E12 223	VANE MOTOR		1	1		MV	
27	G	R01 18J 809	LEFT LEG		1	1			
28	G	R01 18J 523	JOINT SOCKET		1	1			
29	G	T7W E01 072	DRAIN HOSE COVER		1				
29	G	R01 18J 072	DRAIN HOSE COVER			1			

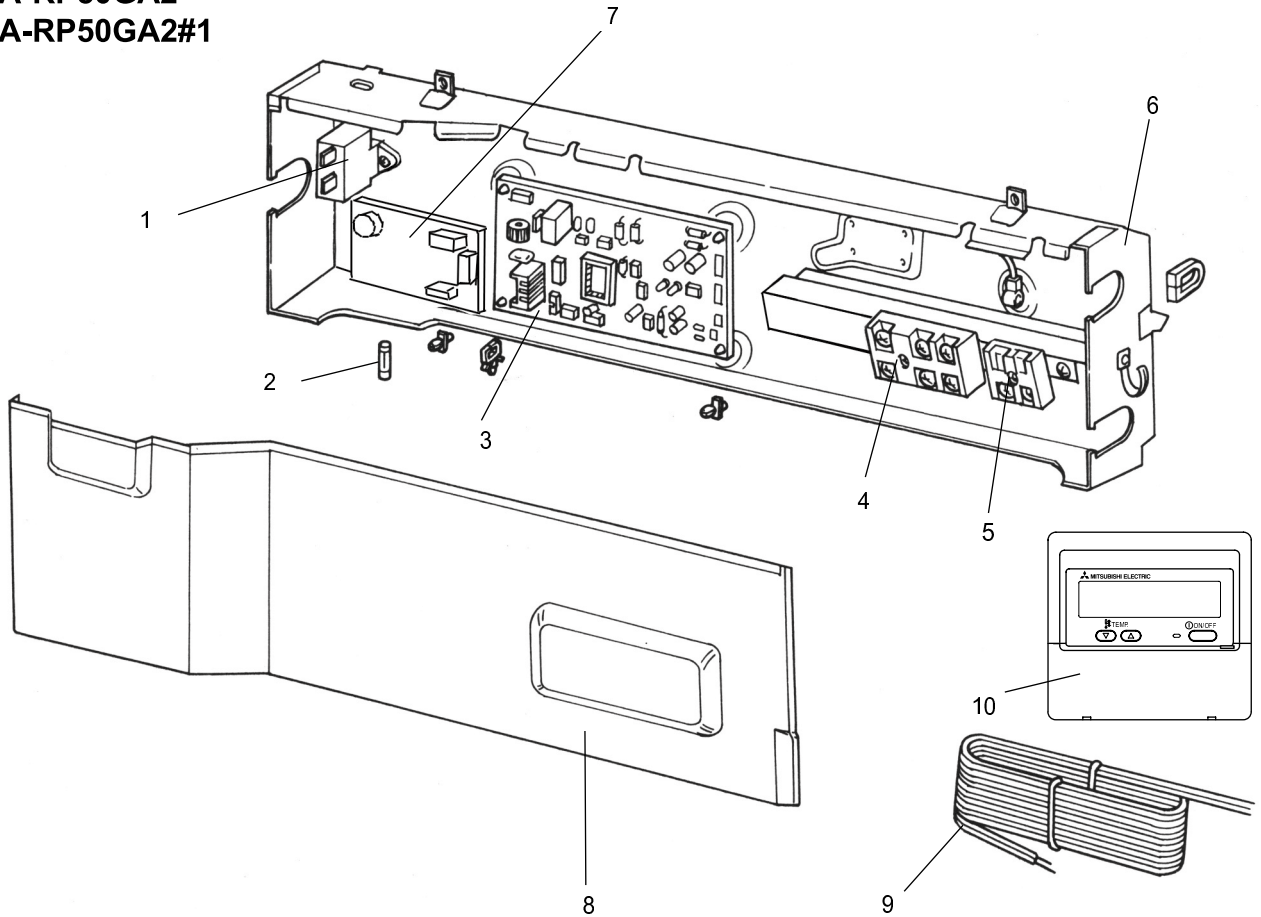
ELECTRICAL PARTS

PCA-RP50/60/71/100/125/140GA

PCA-RP50/60/71/100/125/140GA#1

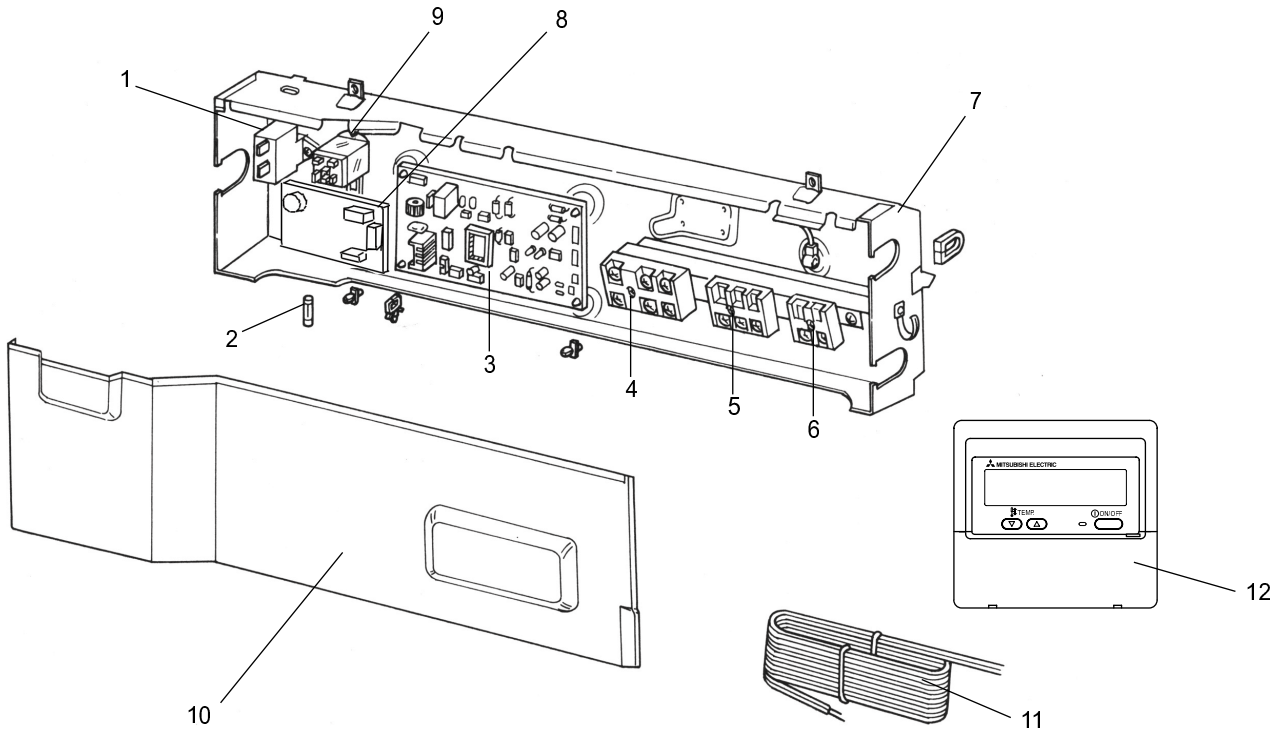
PCA-RP50GA2

PCA-RP50GA2#1



No.	RoHS	Parts No.	Parts Name	Specifications	PCA-RP										Remarks (Drawing No.)	Wiring Diagram Symbol	Recom- mended Q'ty		
					50				60/71/100/125/140				50					100/125/140	
					GA				GA#1				GA2					GA2#1	
1	G	R01 A15 255	CAPACITOR	3 μ F 440V	1				1									C	
	G	T7W E13 255	CAPACITOR	4 μ F 440V		1	1			1	1		1	1				C	
	G	R01 A14 255	CAPACITOR	6 μ F 440V				1				1						C	
2	G	R01 E06 239	FUSE	250V 6.3A	1	1	1	1	1	1	1	1	1	1	1	1		FUSE	
3	G	T7W E50 310	INDOOR CONTROLLER BOARD		1	1	1	1					1					I.B	
	G	T7W E73 310	INDOOR CONTROLLER BOARD						1	1	1	1			1			I.B	
4	G	R01 E20 246	TERMINAL BLOCK	3P(S1,S2,S3)	1	1	1	1	1	1	1	1	1	1	1	1		TB4	
5	G	T7W E33 716	TERMINAL BLOCK	2P(1,2)	1	1	1	1	1	1	1	1	1	1	1	1		TB5	
6	G	—	CONTROL BOX		1	1	1	1	1	1	1	1	1	1	1		(BG00N015G40)		
7	G	R01 E38 313	POWER BOARD		1	1	1	1	1	1	1	1	1	1	1			P.B	
8	G	—	CONTROL COVER		1				1									(BG02A804G38)	
	G	—	CONTROL COVER			1		1			1		1	1	1			(BG02A804G39)	
	G	—	CONTROL COVER				1				1							(BG02A804G40)	
9	G	T7W A01 305	REMOTE CONTROLLER CORD	10m	1	1	1	1	1	1	1	1	1	1	1				
10	G	T7W E11 713	REMOTE CONTROLLER	PAR-21MAA	1	1	1	1	1	1	1	1	1	1	1			R.B	

ELECTRICAL PARTS
PCH-P50GAH, PCH-P100GAH
PCH-P60GAH, PCH-P125GAH
PCH-P71GAH, PCH-P140GAH



No.	ROHS	Parts No.	Parts Name	Specifications	Q'ty / set				Remarks (Drawing No.)	Wiring Diagram Symbol	Recom- mended Q'ty
					PCH-P						
					50	60/71	100	125/140			
1	G	R01 A15 255	CAPACITOR	3 μ F 440V	1					C	
	G	T7W E13 255	CAPACITOR	4 μ F 440V		1	1			C	
	G	R01 A14 255	CAPACITOR	6 μ F 440V				1		C	
2	G	R01 E06 239	FUSE	250V 6.3A	1	1	1	1		FUSE	
3	G	T7W E50 310	INDOOR CONTROLLER BOARD		1	1	1	1		I.B	
4	G	T7W E32 716	TERMINAL BLOCK	3P (L,N, \oplus)	1	1	1	1		TB2	
5	G	R01 E20 246	TERMINAL BLOCK	3P (S1,S2,S3)	1	1	1	1		TB4	
6	G	T7W E33 716	TERMINAL BLOCK	2P (1,2)	1	1	1	1		TB5	
7	G	—	CONTROL BOX		1	1	1	1	(BG00N015G42)		
8	G	R01 E38 313	POWER BOARD		1	1	1	1		P.B	
9	G	R01 E03 215	RELAY	JC-1A DC12V	1	1	1	1		88H	
10	G	—	CONTROL COVER		1				(BG02A804G38)		
	G	—	CONTROL COVER			1		1	(BG02A804G39)		
	G	—	CONTROL COVER				1		(BG02A804G40)		
11	G	T7W A01 305	REMOTE CONTROLLER CORD	10m	1	1	1	1			
12	G	T7W E11 713	REMOTE CONTROLLER	PAR-21MAA	1	1	1	1		R.B	

Mr. SLIM™

 **MITSUBISHI ELECTRIC CORPORATION**

HEAD OFFICE : TOKYO BLDG., 2-7-3, MARUNOUCHI, CHIYODA-KU, TOKYO 100-8310, JAPAN