

SERVICE MANUAL

R407C

Outdoor unit
[model names]

PUH-P25VGAA

PUH-P35VGAA PU-P35VGAA

PUH-P35YGAA PU-P35YGAA

PUH-P50VGAA PU-P50VGAA

PUH-P50YGAA PU-P50YGAA

PUH-P60VGAA PU-P60VGAA

PUH-P60YGAA PU-P60YGAA

PUH-P71VGAA PU-P71VGAA

PUH-P71YGAA PU-P71YGAA

PUH-P100VGAA PU-P100VGAA

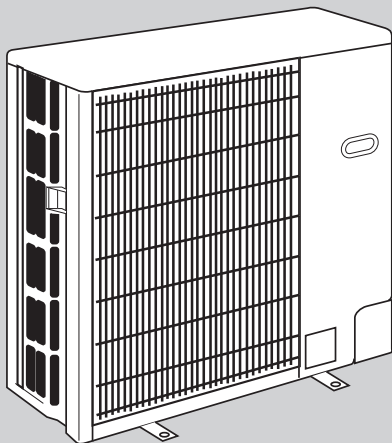
PUH-P100YGAA PU-P100YGAA

PUH-P125YGAA PU-P125YGAA

PUH-P140YGAA PU-P140YGAA

[Service Ref.]
Service Ref. is on page 2.

• This manual describes only service data of the outdoor units.



CONTENTS

1. REFERENCE MANUAL	3
2. SAFETY PRECAUTION	4
3. PART NAMES AND FUNCTIONS	6
4. SPECIFICATIONS	7
5. DATA	11
6. OUTLINES AND DIMENSIONS	18
7. WIRING DIAGRAM	22
8. WIRING SPECIFICATIONS	24
9. REFRIGERANT SYSTEM DIAGRAM	28
10. TROUBLESHOOTING	30
11. FUNCTION SETTING	65
12. DISASSEMBLY PROCEDURE	71
13. PARTS LIST	75

13

PARTS LIST

STRUCTURAL PARTS

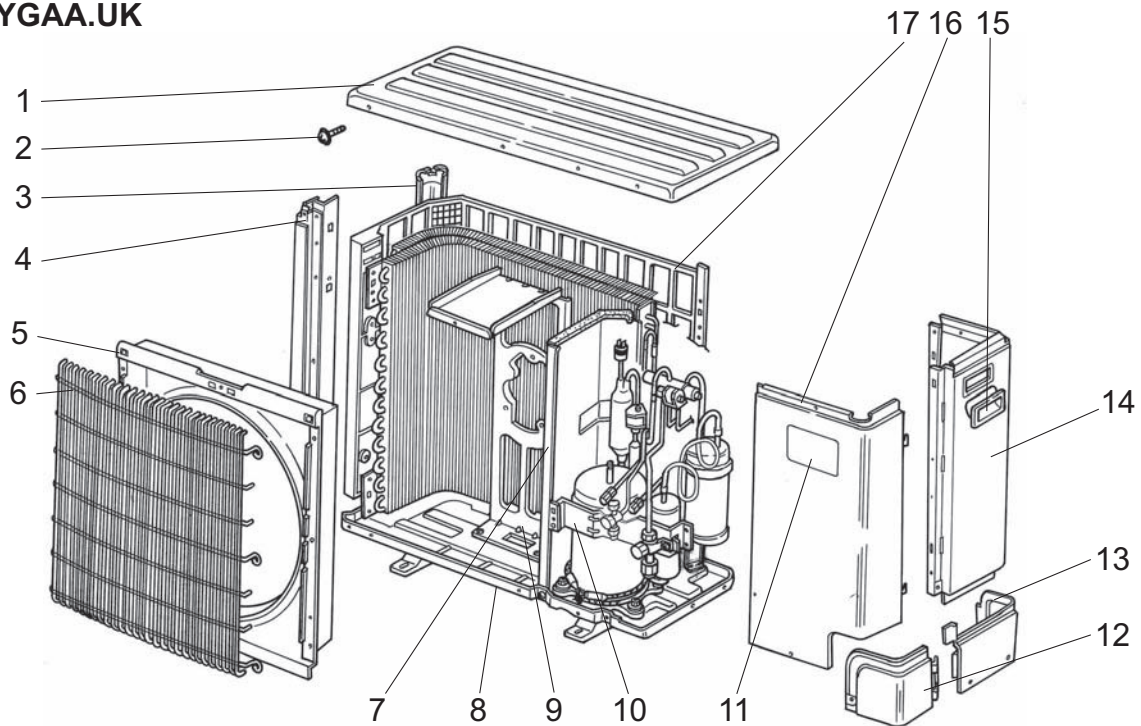
PUH-P25VGAA.UK

PUH-P35VGAA.UK

PUH-P35YGAA.UK

PU-P35VGAA.UK

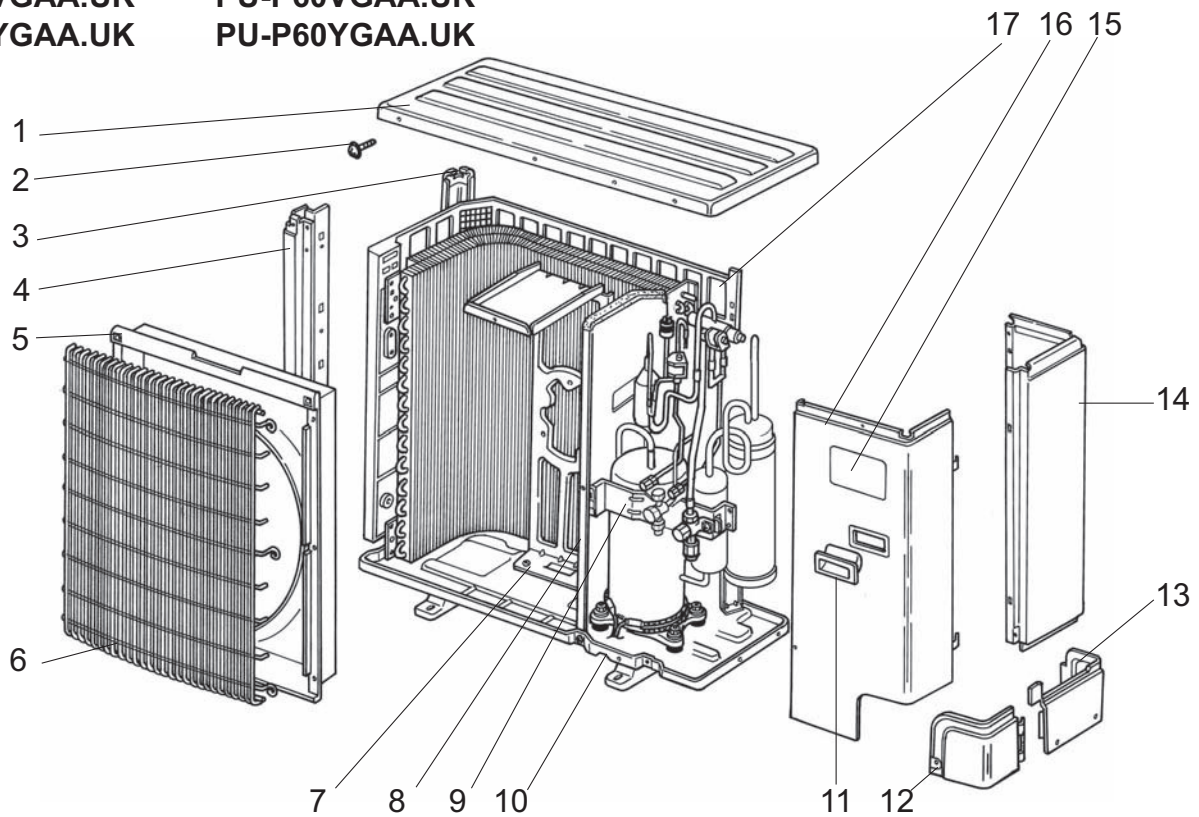
PU-P35YGAA.UK



No.	Part No.	Part Name	Specification	Q'ty/set				Remarks (Drawing No.)	Wiring Diagram Symbol	Recom- mended Q'ty	Price	
				PUH-P• GAA.UK		PU-P• GAA.UK					Unit	Amount
				25.35V	35Y	35V	35Y					
1	S70 30L 641	TOP PANEL		1	1	1	1					
2	S71 000 051	F.ST SCREW	(5X15)	16	16	16	16					
3	S70 30L 613	REAR SUPPORT		1	1	1	1					
4	S70 23T 614	FRONT SUPPORT		1	1	1	1					
5	S70 30L 119	BELL MOUTH		1	1	1	1					
6	S70 E01 675	WIRE GRILL - S		1	1	1	1					
7	—	SEPARATOR ASSY		1	1	1	1	(RG00R045G06)				
8	S70 E01 686	BASE		1	1	1	1					
9	S70 K02 130	MOTOR SUPPORT		1	1	1	1					
10	—	VALVE BED ASSY		1	1	1	1	(RG00R048G01)				
11	S70 001 699	LABEL (MITSUBISHI)		1	1	1	1					
12	S70 31L 658	COVER PANEL 1		1	1	1	1					
13	S70 30L 658	COVER PANEL 2		1	1	1	1					
14	S70 E00 682	REAR PANEL		1	1	1	1					
15	S70 30L 655	PANEL HANDLE		1	1	1	1					
16	S70 K01 661	SERVICE PANEL		1								
	S70 K02 661	SERVICE PANEL			1							
	S70 K03 661	SERVICE PANEL				1						
	S70 K02 663	SERVICE PANEL					1					
17	S70 30L 698	REAR GUARD		1	1	1	1					

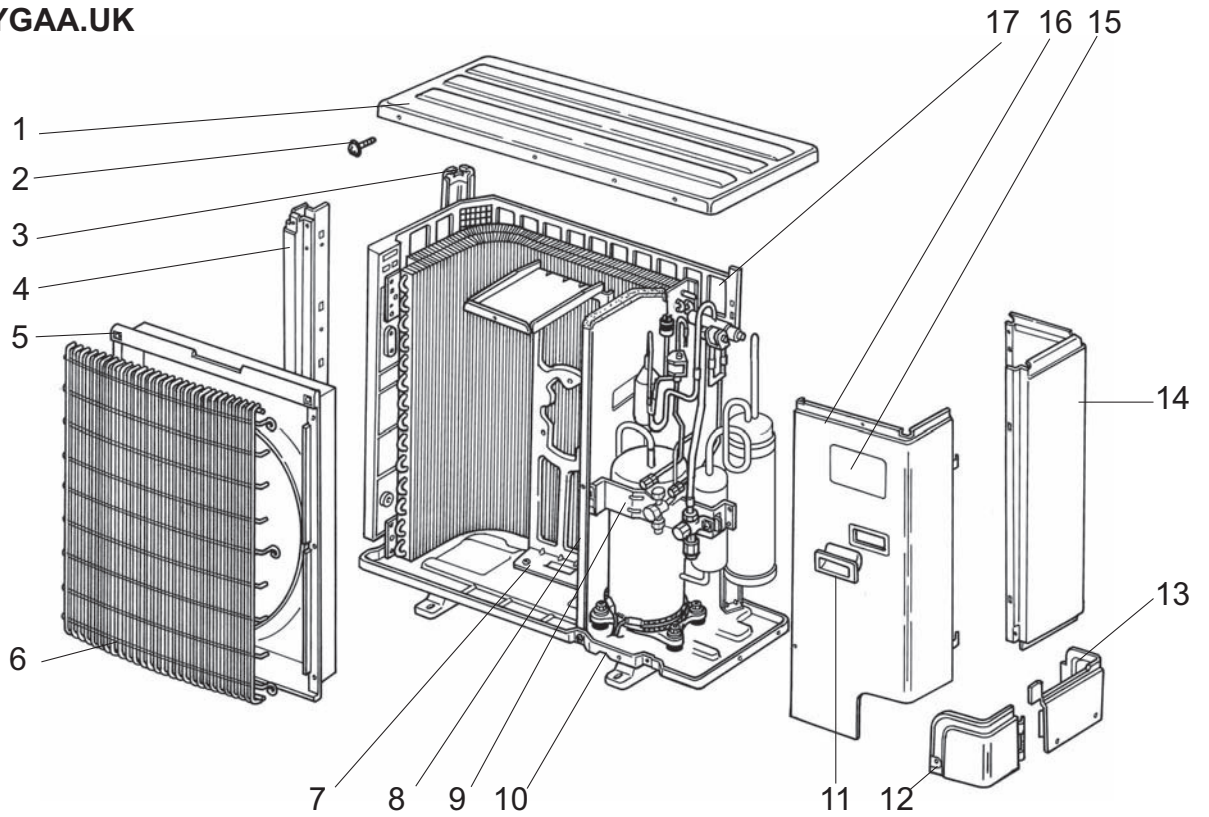
STRUCTURAL PARTS

PUH-P50VGAA.UK PUH-P60VGAA.UK
 PUH-P50YGAA.UK PUH-P60YGAA.UK
 PU-P50VGAA.UK PU-P60VGAA.UK
 PU-P50YGAA.UK PU-P60YGAA.UK



No.	Part No.	Part Name	Specificatio	Q'ty/set				Remarks (Drawing No.)	Wiring Diagram Symbol	Recom- mended Q'ty	Price	
				PUH-P- GAA.UK 50,60V	50,60Y	PU-P- GAA.UK 50,60V	50,60Y				Unit	Amount
1	S70 30L 641	TOP PANEL		1	1	1	1					
2	S71 000 051	F.ST SCREW	(5X15)	16	16	16	16					
3	S70 97W 613	REAR SUPPORT		1	1	1	1					
4	S70 E00 614	FRONT SUPPORT		1	1	1	1					
5	S70 36L 119	BELL MOUTH		1	1	1	1					
6	S70 E02 675	WIRE GRILL-M		1	1	1	1					
7	S70 K03 130	MOTOR SUPPORT		1	1	1	1					
8	—	SEPARATOR ASSY		1	1	1	1	(RG00R045G07)				
9	—	VALVE BED ASSY		1	1	1	1	(RG00R048G01)				
10	S70 E02 686	BASE		1	1	1	1					
11	S70 30L 655	PANEL HANDLE		2	2	2	2					
12	S70 31L 658	COVER PANEL-1		1	1	1	1					
13	S70 30L 658	COVER PANEL-2		1	1	1	1					
14	S70 E01 682	REAR PANEL		1	1	1	1					
15	S70 001 699	LABEL (MITSUBISHI)		1	1	1	1					
16	S70 K05 661	SERVICE PANEL		1								
	S70 K06 661	SERVICE PANEL				1						
	S70 K07 661	SERVICE PANEL			1							
	S70 K08 661	SERVICE PANEL					1					
17	S70 31L 698	REAR GUARD		1	1	1	1					

STRUCTURAL PARTS
PUH-P71VGAA.UK
PUH-P71YGAA.UK
PU-P71VGAA.UK
PU-P71YGAA.UK

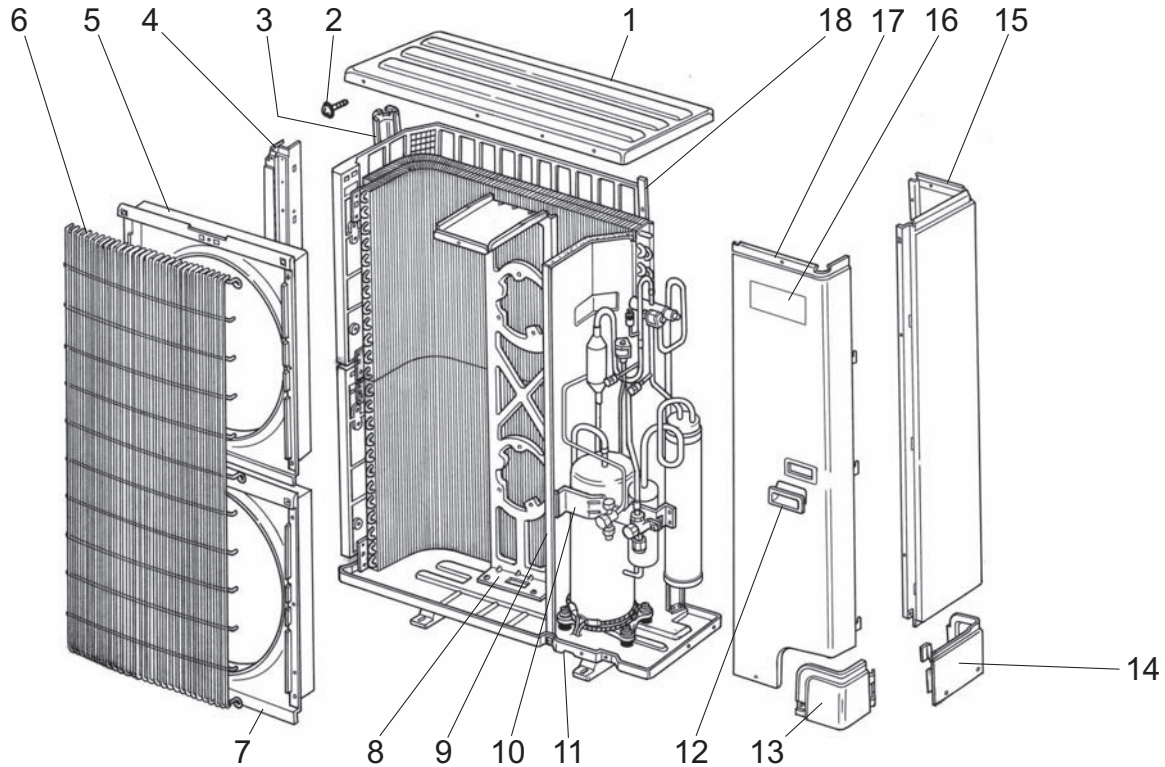


No.	Part No.	Part Name	Specificatio	Q'ty/set				Remarks (Drawing No.)	Wiring Diagram Symbol	Recom- mended Q'ty	Price	
				PUH-P71 .UK VGAA	YGAA	PU-P71 .UK VGAA	YGAA				Unit	Amount
1	S70 30L 641	TOP PANEL		1	1	1	1					
2	S71 000 051	F.ST SCREW	(5X15)	16	16	16	16					
3	S70 97W 613	REAR SUPPORT		1	1	1	1					
4	S70 E00 614	FRONT SUPPORT		1	1	1	1					
5	S70 36L 119	BELL MOUTH		1	1	1	1					
6	S70 E02 675	WIRE GRILL-M		1	1	1	1					
7	S70 K03 130	MOTOR SUPPORT		1	1	1	1					
8	—	SEPARATOR ASSY		1	1	1	1	(RG00R045G08)				
9	—	VALVE BED ASSY		1	1	1	1	(RG00R048G01)				
10	S70 E02 686	BASE		1	1	1	1					
11	S70 30L 655	PANEL HANDLE		2	2	2	2					
12	S70 31L 658	COVER PANEL-1		1	1	1	1					
13	S70 30L 658	COVER PANEL-2		1	1	1	1					
14	S70 E02 682	REAR PANEL		1	1	1	1					
15	S70 001 699	LABEL (MITSUBISHI)		1	1	1	1					
16	S70 K05 661	SERVICE PANEL		1								
	S70 K06 661	SERVICE PANEL				1						
	S70 K07 661	SERVICE PANEL			1							
	S70 K08 661	SERVICE PANEL					1					
17	S70 31L 698	REAR GUARD		1	1	1	1					

STRUCTURAL PARTS

PUH-P100VGAA.UK PU-P100VGAA.UK

PUH-P100YGAA.UK PU-P100YGAA.UK



No.	Part No.	Part Name	Specification	Q'ty/set				Remarks (Drawing No.)	Wiring Diagram Symbol	Recom- mended Q'ty	Price	
				PUH-P100 .UK VGAA	PU-P100 .UK YGAA	PUH-P100 .UK VGAA	PU-P100 .UK YGAA				Unit	Amount
1	S70 30L 641	TOP PANEL		1	1	1	1					
2	S71 000 051	F.ST SCREW	(5X15)	18	18	18	18					
3	S70 98W 613	REAR SUPPORT		1	1	1	1					
4	S70 E01 614	FRONT SUPPORT		1	1	1	1					
5	S70 41L 119	BELL MOUTH		1	1	1	1					
6	S70 E03 675	WIRE GRILL - L		1	1	1	1					
7	S70 30L 119	BELL MOUTH		1	1	1	1					
8	S70 42L 130	MOTOR SUPPORT		1	1	1	1					
9	—	SEPARATOR ASSY		1	1	1	1	(RG00R045G09)				
10	—	VALVE BED ASSY		1	1	1	1	(RG00R048G01)				
11	S70 E03 686	BASE		1	1	1	1					
12	S70 30L 655	PANEL HANDLE		2	2	2	2					
13	S70 31L 658	COVER PANEL-1		1	1	1	1					
14	S70 30L 658	COVER PANEL-2		1	1	1	1					
15	S70 E03 682	REAR PANEL		1	1	1	1					
16	S70 001 699	LABEL (MITSUBISHI)		1	1	1	1					
17	S70 K09 661	SERVICE PANEL		1								
	S70 K10 661	SERVICE PANEL			1							
	S70 K11 661	SERVICE PANEL				1						
	S70 K12 661	SERVICE PANEL					1					
18	S70 30L 698	REAR GUARD		2	2	2	2					

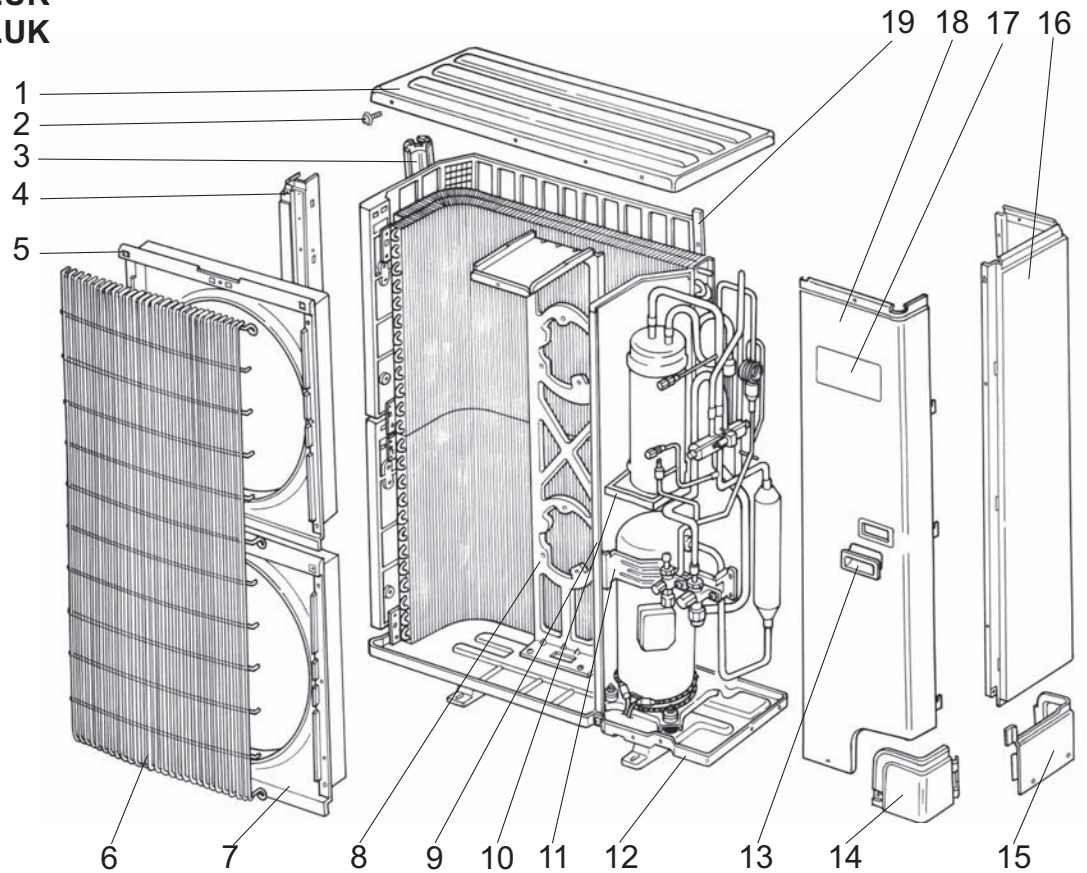
STRUCTURAL PARTS

PUH-P125YGAA.UK

PUH-P140YGAA.UK

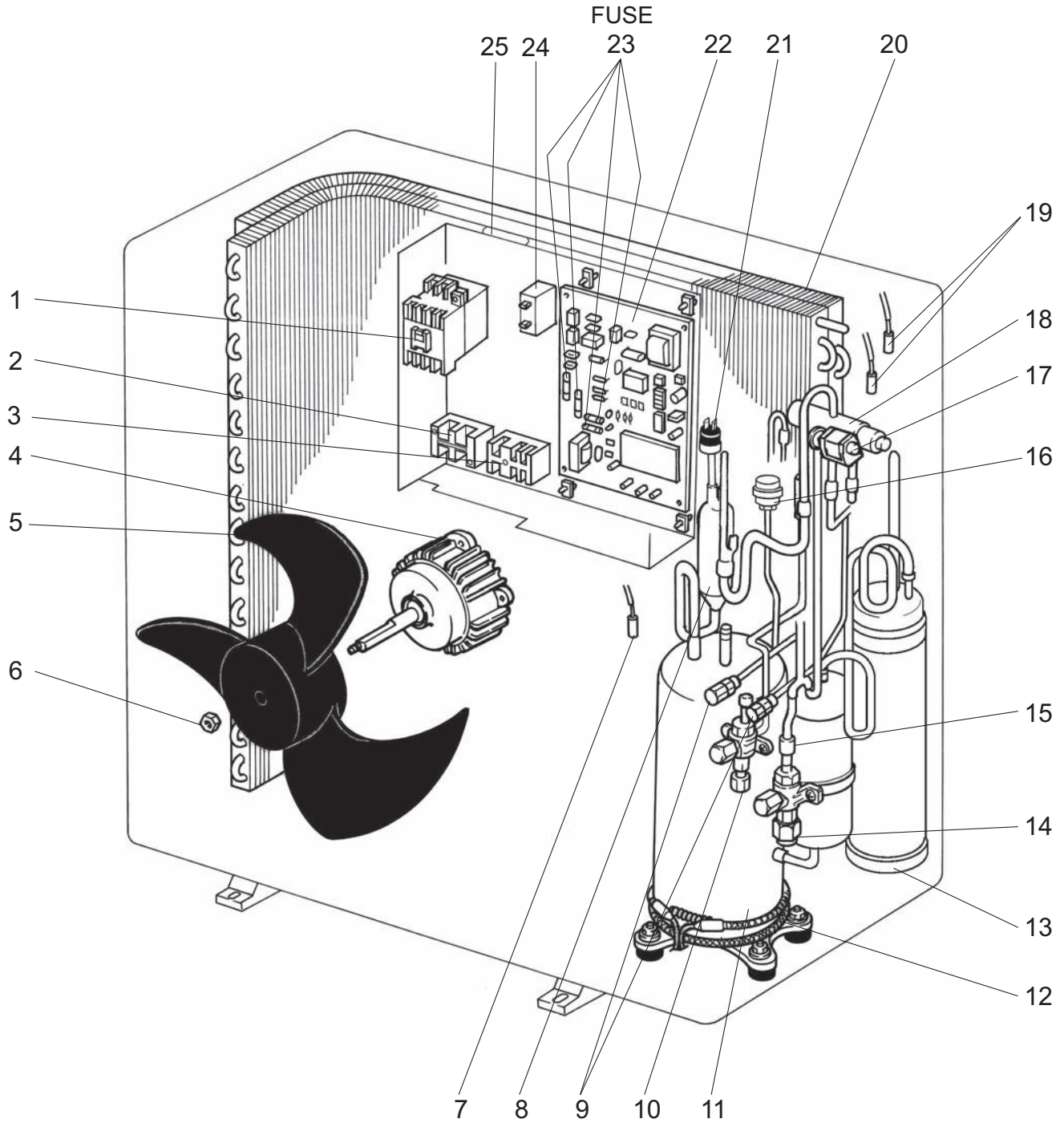
PU-P125YGAA.UK

PU-P140YGAA.UK



No.	Part No.	Part Name	Specification	Q'ty/set		Remarks (Drawing No.)	Wiring Diagram Symbol	Recom- mended Q'ty	Price	
				PUH-P125, 140 YGAA.UK	PU-P125, 140 YGAA.UK				Unit	Amount
1	S70 17T 641	TOP PANEL		1	1					
2	S71 000 051	F.ST SCREW	(5X15)	18	18					
3	S70 98W 613	REAR SUPPORT		1	1					
4	S70 17T 614	FRONT SUPPORT		1	1					
5	S70 41L 119	BELL MOUTH		1	1					
6	S70 E03 675	WIRE GRILL - L		1	1					
7	S70 30L 119	BELL MOUTH		1	1					
8	S70 42L 130	MOTOR SUPPORT		1	1					
9	—	SEPARATOR ASSY		1	1	(RG00R046G03)				
10	S70 A04 529	ACCUMULATOR DRAIN PAN		1	1					
11	—	VALVE BED ASSY		1	1	(RG00R048G03)				
12	S70 H13 686	BASE		1	1					
13	S70 30L 655	PANEL HANDLE		2	2					
14	S70 31L 658	COVER PANEL-1		1	1					
15	S70 30L 658	COVER PANEL-2		1	1					
16	S70 E04 682	REAR PANEL		1	1					
17	S70 001 699	LABEL(MITSUBISHI)		1	1					
18	S70 K13 661	SERVICE PANEL		1						
	S70 K14 661	SERVICE PANEL			1					
19	S70 17T 698	REAR GUARD		2	2					

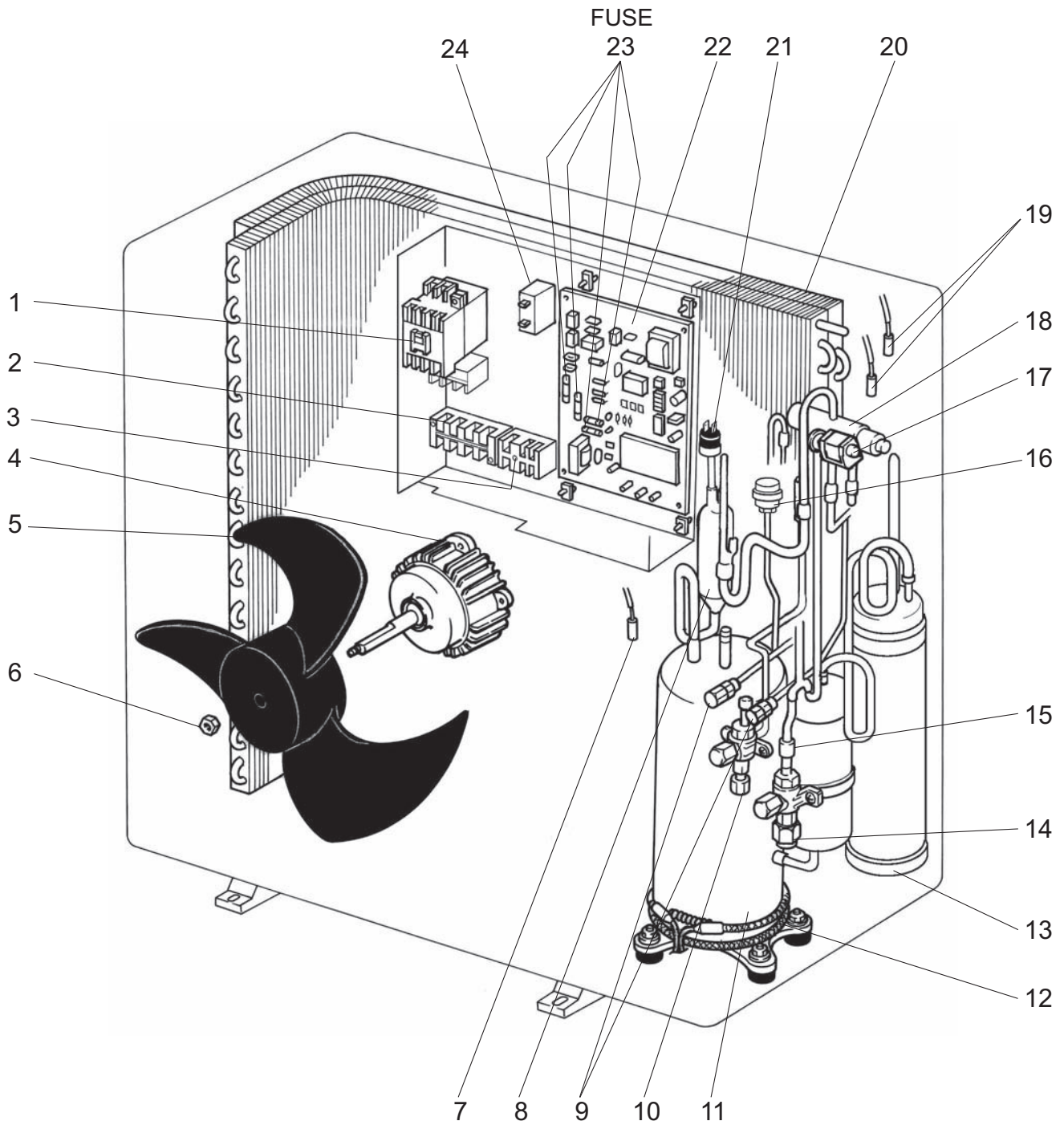
FUNCTIONAL PARTS
PUH-P25VGAA.UK
PUH-P35VGAA.UK
PU-P35VGAA.UK

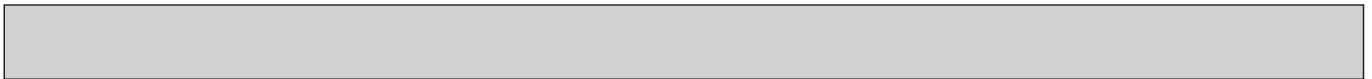




No.	Part No.	Part Name	Specification	Q'ty/set			Remarks	Wiring Diagram Symbol	Recom-mended Q'ty	Price	
				PUH-P		PU-P				Unit	Amount
				25VGAA .UK	35VGAA .UK	35VGAA .UK					
1	S70 249 708	CONTACTOR	S-U12 240V	1	1	1					
2	S70 E03 716	TERMINAL BLOCK	2P(L,N)	1	1	1					
3	S70 E04 716	TERMINAL BLOCK	3P(S1,S2,S3)	1	1	1					
4	S70 K05 763	OUTDOOR FAN MOTOR	YDK75-6U	1	1	1					
5	S70 K04 115	PROPELLER FAN 4		1	1	1					
6	S70 K01 097	NUT	M6	1	1	1					
7	S70 E16 202	THERMISTOR (DISCHARGE)		1	1	1					
8	S70 E00 467	MUFFLER		1	1						
9	S70 E00 413	CHARGE PLUG		2	2	2					
10	S70 400 418	STOP VALVE(LIQUID)	1/4"	1							
	S70 200 418	STOP VALVE(LIQUID)	3/8"		1	1					
11	S70 061 400	COMPRESSOR	RE189VHSMT	1							
	S70 062 400	COMPRESSOR	RE277VHSMT		1	1					
12	S70 E02 236	CRANKCASE HEATER	240V / 30W	1	1	1					
13	S70 E02 440	ACCUMULATOR		1	1	1					
14	S70 E01 411	BALL VALVE	1/2"	1							
	S70 E03 411	BALL VALVE	5/8"		1	1					
15	S70 66L 450	STRAINER	#50-12	1	1	1					
16	S70 E03 401	LINEAR EXPANSION VALVE		1	1	1					
17	S70 350 242	4-WAY VALVE SOLENOID COIL		1	1						
18	S70 E01 403	4-WAY VALVE (REVERSING)		1	1						
19	S70 E15 202	THERMISTOR (LIQUID , CONDENSER / EVAPORATOR)		1	1	1					
20	S70 E99 408	HEAT EXCHANGER		1							
	S70 E00 408	HEAT EXCHANGER			1	1					
21	S70 E00 208	HIGH PRESSURE SWITCH	OFF:3.3MPa ON:2.6MPa	1	1	1					
22	S70 31L 315	OUTDOOR CONTROLLER BOARD		1	1	1					
23	S70 520 239	FUSE	6.3A	4	4	4	(PART OF BOARD)				
24	S70 30L 255	OUTDOOR FAN CAPACITOR	2.2 μ F 440V	1	1	1					
25	S70 E00 723	COMPRESSOR CAPACITOR	30 μ F 420V	1							
	S70 E01 723	COMPRESSOR CAPACITOR	40 μ F 400V		1	1					

FUNCTIONAL PARTS
PUH-P35YGAA.UK
PU-P35YGAA.UK



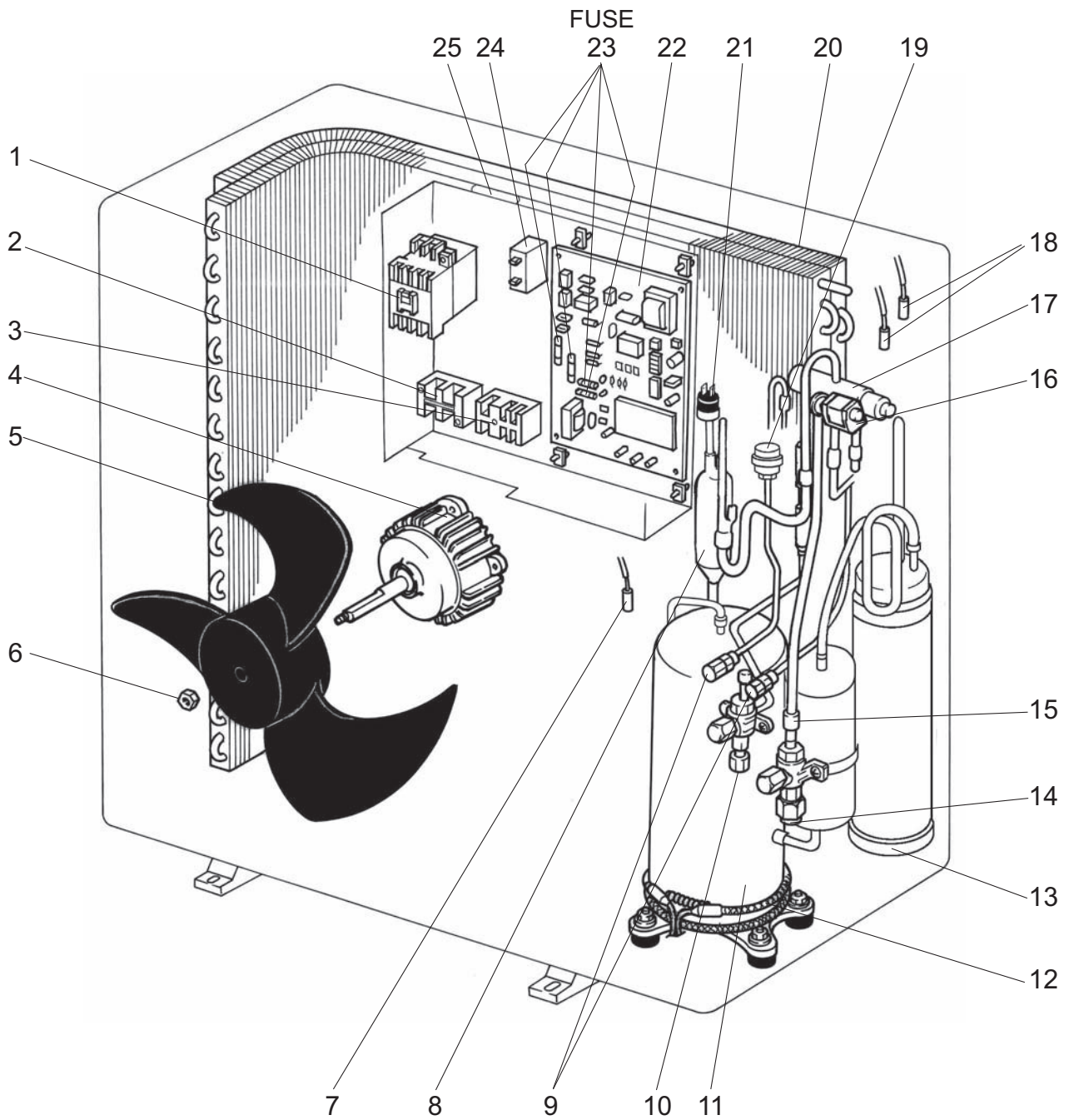


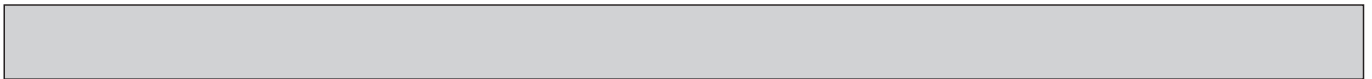
No.	Part No.	Part Name	Specification	Q'ty/set		Remarks	Wiring Diagram Symbol	Recommended Q'ty	Price	
				PUH-P35Y	PU-P35Y				Unit	Amount
				GAA.UK	GAA.UK					
1	S70 250 708	CONTACTOR	MSO-N11	1	1		51C,52C			
2	S70 E10 716	TERMINAL BLOCK	4P(L1,L2,L3,N)	1	1		TB1			
3	S70 E04 716	TERMINAL BLOCK	3P(S1,S2,S3)	1	1		TB2			
4	S70 K05 763	OUTDOOR FAN MOTOR	YDK75-6U	1	1		MF			
5	S70 K04 115	PROPELLER FAN 4		1	1					
6	S70 K01 097	NUT	M6	1	1					
7	S70 E16 202	THERMISTOR (DISCHARGE)		1	1		TH4			
8	S70 E00 467	MUFFLER		1						
9	S70 E00 413	CHARGE PLUG		2	2					
10	S70 200 418	STOP VALVE(LIQUID)	3/8"	1	1					
11	S70 063 400	COMPRESSOR	RE277YFKM	1	1		MC			
12	S70 E02 236	CRANKCASE HEATER	240V / 30W	1	1		CH			
13	S70 E02 440	ACCUMULATOR		1	1					
14	S70 E03 411	BALL VALVE	5/8"	1	1					
15	S70 66L 450	STRAINER	#50-12	1	1					
16	S70 E03 401	LINEAR EXPANSION VALVE		1	1		LEV			
17	S70 350 242	4-WAY VALVE SOLENOID COIL		1			21S4			
18	S70 E01 403	4-WAY VALVE (REVERSING)		1						
19	S70 E15 202	THERMISTOR (LIQUID , CONDENSER / EVAPORATOR)		1	1		TH3, TH6			
20	S70 E00 408	HEAT EXCHANGER		1	1					
21	S70 E00 208	HIGH PRESSURE SWITCH	OFF:3.3MPa ON:2.6MPa	1	1		63H			
22	S70 32L 315	OUTDOOR CONTROLLER BOARD		1	1		O.B			
23	S70 520 239	FUSE	6.3A	4	4	(PART OF BOARD)	FUSE			
24	S70 30L 255	OUTDOOR FAN CAPACITOR	2.2 μ F 440V	1	1		C3			

FUNCTIONAL PARTS

PUH-P50VGAA.UK PUH-P60VGAA.UK

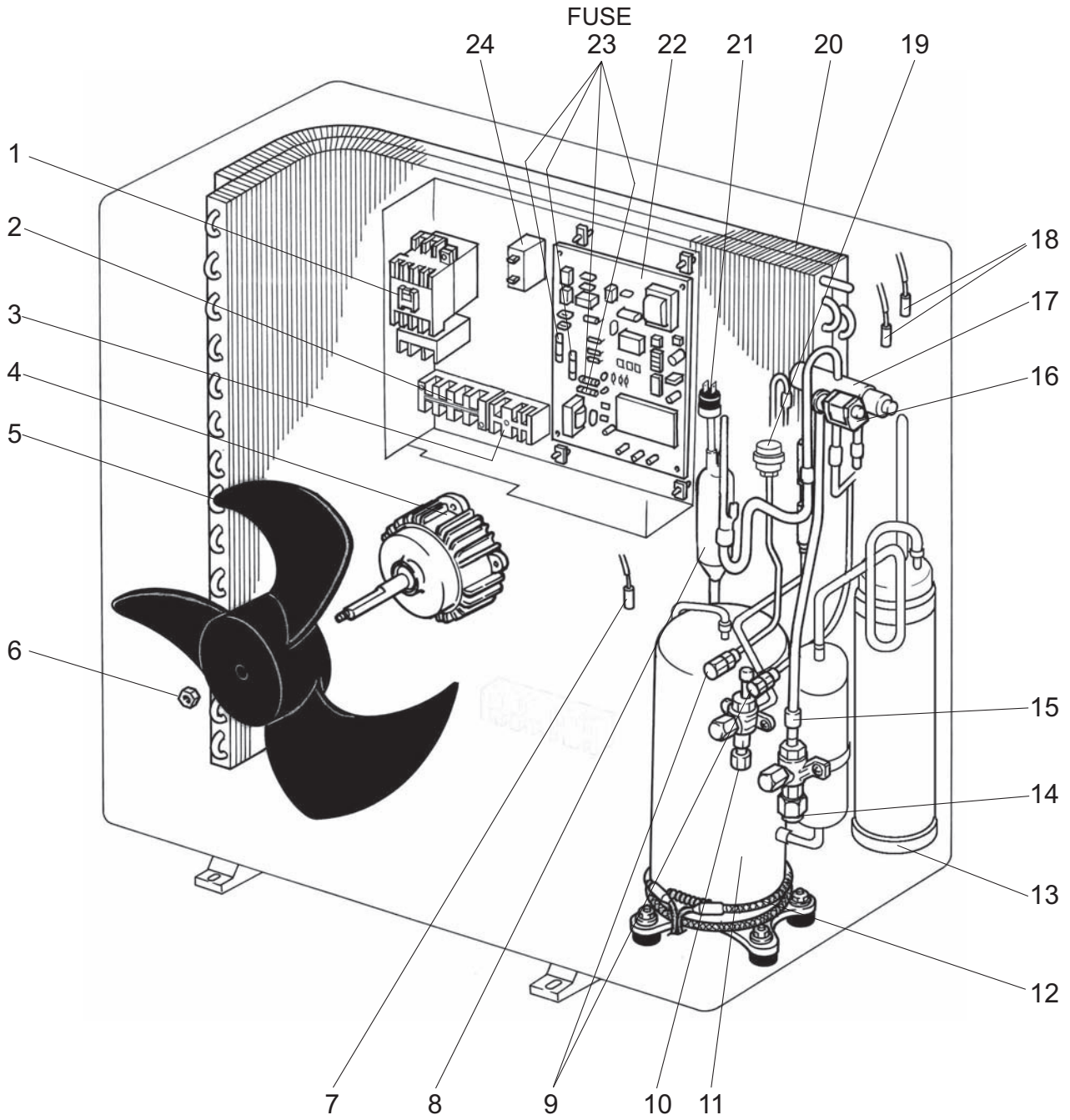
PU-P50VGAA.UK PU-P60VGAA.UK





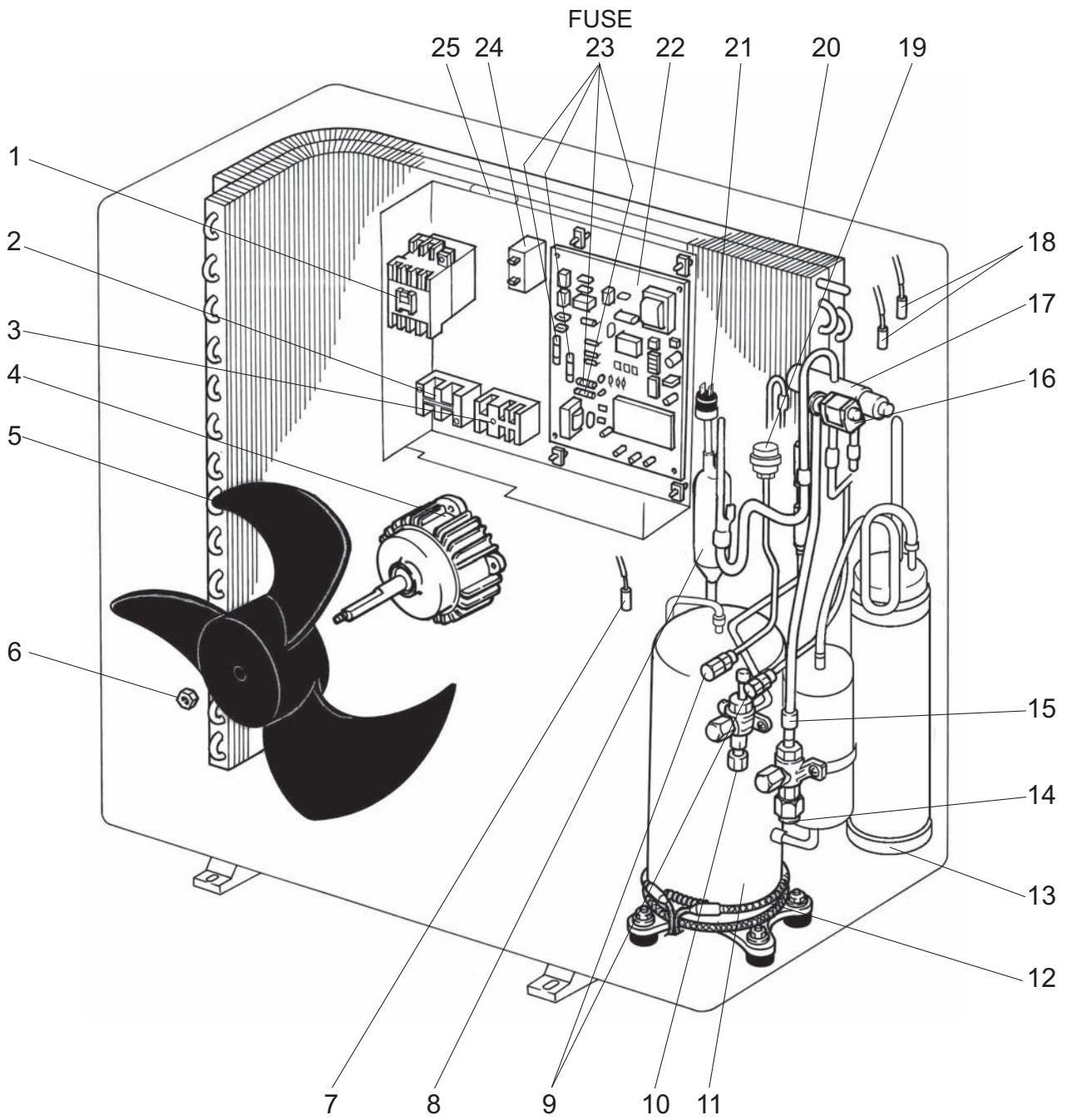
No.	Part No.	Part Name	Specification	Q'ty/set				Remarks	Wiring Diagram Symbol	Recommended Q'ty	Price	
				PUH-P•VGAA.UK		PU-P•VGAA.UK					Unit	Amount
				50	60	50	60					
1	S70 330 708	CONTACTOR	S-N18EX	1	1	1	1		52C			
2	S70 E03 716	TERMINAL BLOCK	2P(L,N)	1	1	1	1		TB1			
3	S70 E04 716	TERMINAL BLOCK	3P(S1,S2,S3)	1	1	1	1		TB2			
4	S70 K05 763	OUTDOOR FAN MOTOR	YDK75-6U	1	1	1	1		MF			
5	S70 K04 115	PROPELLER FAN 4		1	1	1	1					
6	S70 K01 097	NUT	M6	1	1	1	1					
7	S70 E16 202	THERMISTOR (DISCHARGE)		1	1	1	1		TH4			
8	S70 36L 467	MUFFLER		1	1							
9	S70 E00 413	CHARGE PLUG		2	2	2	2					
10	S70 300 418	STOP VALVE (LIQUID)	3/8"	1	1	1	1					
11	S70 064 400	COMPRESSOR	NE36VMJMT	1		1			MC			
	S70 066 400	COMPRESSOR	NE41VMJMT		1		1		MC			
12	S70 E04 236	CRANKCASE HEATER	240V / 38W	1	1	1	1		CH			
13	S70 E04 440	ACCUMULATOR		1		1						
	S70 E03 440	ACCUMULATOR			1		1					
14	S70 E04 411	BALL VALVE	5/8"	1	1	1	1					
15	S70 36L 450	STRAINER	#50-16	1	1	1	1					
16	S70 350 242	4-WAY VALVE SOLENOID COIL		1	1				21S4			
17	S70 A00 403	4-WAY VALVE (REVERSING)		1	1							
18	S70 E15 202	THERMISTOR(LIQUID, CONDENSER / EVAPORATOR)		1	1	1	1		TH3, TH6			
19	S70 E02 401	LINEAR EXPANSION VALVE		1	1	1	1		LEV			
20	S70 E02 408	HEAT EXCHANGER		1		1						
	S70 E01 408	HEAT EXCHANGER			1		1					
21	S70 E00 208	HIGH PRESSURE SWITCH	OFF:3.3MPa ON:2.6MPa	1	1	1	1		63H			
22	S70 31L 315	OUTDOOR CONTROLLER BOARD		1	1	1	1		O.B			
23	S70 520 239	FUSE	6.3A	4	4	4	4	(PART OF BOARD)	FUSE			
24	S70 30L 255	OUTDOOR FAN CAPACITOR	2.2 μ F \times 440V	1	1	1	1		C3			
25	S70 100 723	COMPRESSOR CAPACITOR	50 μ F \times 420V	1		1			C5			
	S70 869 723	COMPRESSOR CAPACITOR	45 μ F \times 440V		1		1		C5			

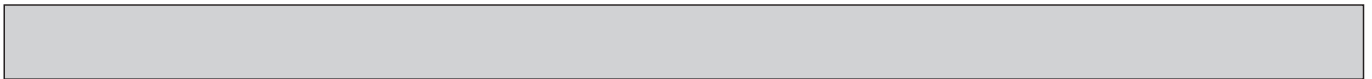
FUNCTIONAL PARTS
PUH-P50YGAA.UK PUH-P50YGAA.UK
PU-P60YGAA.UK PU-P60YGAA.UK



No.	Part No.	Part Name	Specification	Q'ty/set				Remarks	Wiring Diagram Symbol	Recommended Q'ty	Price	
				PUH-P•YGAA.UK		PU-P•YGAA.UK					Unit	Amount
				50	60	50	60					
1	S70 332 708	CONTACTOR	MSO-N11	1		1		51C,52C				
	S70 333 708	CONTACTOR	MSO-N11		1		1	51C,52C				
2	S70 E10 716	TERMINAL BLOCK	4P(L1,L2,L3,N)	1	1	1	1	TB1				
3	S70 E04 716	TERMINAL BLOCK	3P(S1,S2,S3)	1	1	1	1	TB2				
4	S70 K05 763	OUTDOOR FAN MOTOR	YDK75-6U	1	1	1	1	MF				
5	S70 K04 115	PROPELLER FAN 4		1	1	1	1					
6	S70 K01 097	NUT	M6	1	1	1	1					
7	S70 E16 202	THERMISTOR (DISCHARGE)		1	1	1	1	TH4				
8	S70 36L 467	MUFFLER		1	1							
9	S70 E00 413	CHARGE PLUG		2	2	2	2					
10	S70 300 418	STOP VALVE (LIQUID)	3/8"	1	1	1	1					
11	S70 065 400	COMPRESSOR	NE36YEKMT	1		1		MC				
	S70 067 400	COMPRESSOR	NE41YEKMT		1		1	MC				
12	S70 E04 236	CRANKCASE HEATER	240V 38W	1	1	1	1	CH				
13	S70 E04 440	ACCUMULATOR		1		1						
	S70 E03 440	ACCUMULATOR			1		1					
14	S70 E04 411	BALL VALVE	5/8"	1	1	1	1					
15	S70 36L 450	STRAINER	#50-16	1	1	1	1					
16	S70 350 242	4-WAY VALVE SOLENOID COIL		1	1			21S4				
17	S70 A00 403	4-WAY VALVE (REVERSING)		1	1							
18	S70 E15 202	THERMISTOR(LIQUID, CONDENSER / EVAPORATOR)		1	1	1	1	TH3, TH6				
19	S70 E02 401	LINEAR EXPANSION VALVE		1	1	1	1	LEV				
20	S70 E02 408	HEAT EXCHANGER		1		1						
	S70 E01 408	HEAT EXCHANGER			1		1					
21	S70 E00 208	HIGH PRESSURE SWITCH	OFF:3.3MPa ON:2.6MPa	1	1	1	1	63H				
22	S70 32L 315	OUTDOOR CONTROLLER BOARD		1	1	1	1	O.B				
23	S70 520 239	FUSE	6.3A	4	4	4	4	(PART OF BOARD) FUSE				
24	S70 30L 255	OUTDOOR FAN CAPACITOR	2.2 μ F \times 440V	1	1	1	1	C3				

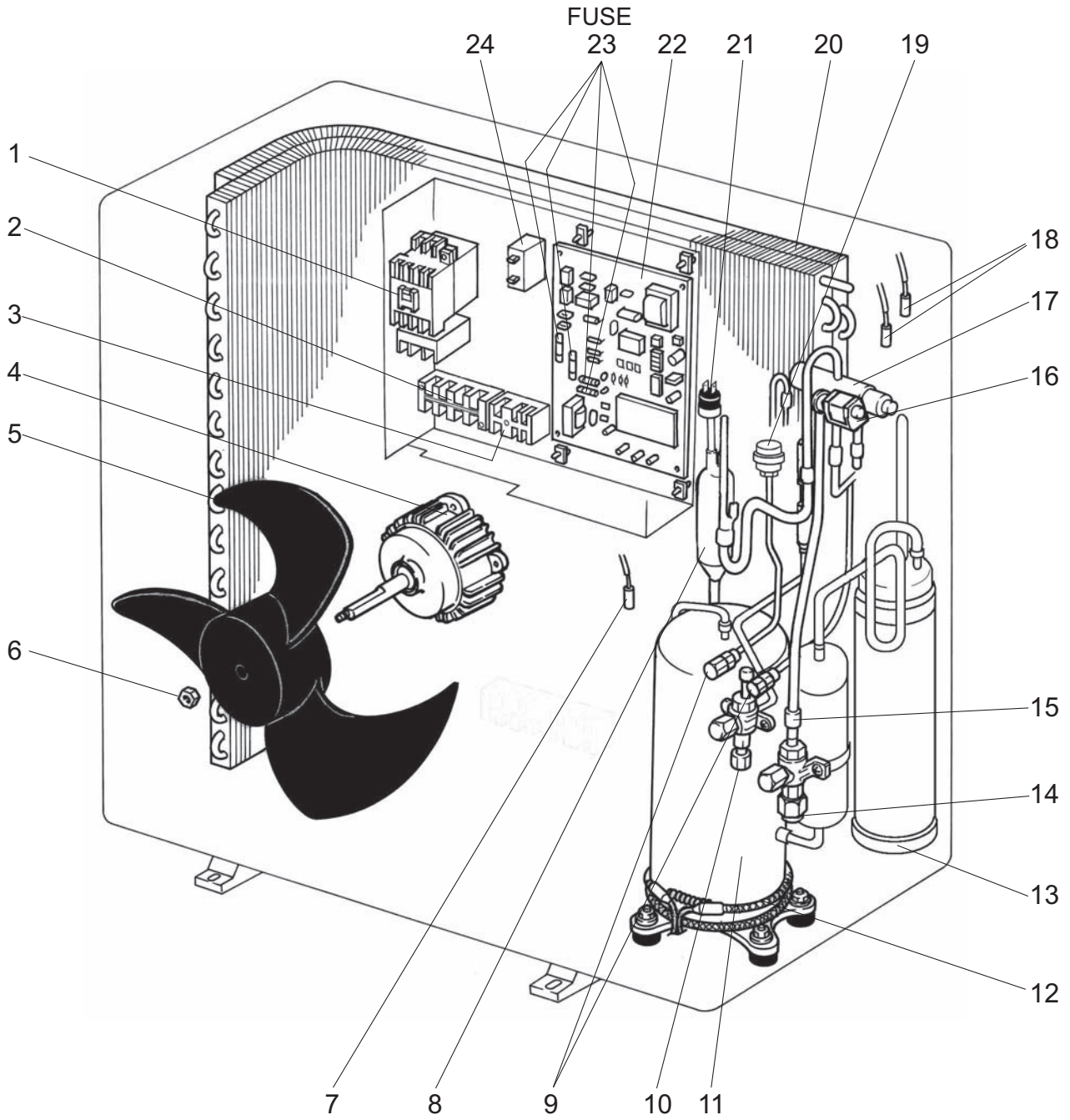
FUNCTIONAL PARTS
PUH-P71VGAA.UK
PU-P71VGAA.UK

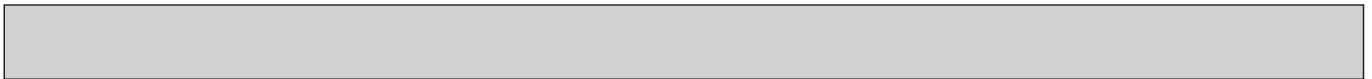




No.	Part No.	Part Name	Specification	Q'ty/set		Remarks	Wiring Diagram Symbol	Recommended Q'ty	Price	
				PUH-P71V	PU-P71V				Unit	Amount
				GAA.UK	GAA.UK					
1	S70 330 708	CONTACTOR	S-N18EX	1	1		52C			
2	S70 E03 716	TERMINAL BLOCK	2P(L,N)	1	1		TB1			
3	S70 E04 716	TERMINAL BLOCK	3P(S1,S2,S3)	1	1		TB2			
4	S70 K05 763	OUTDOOR FAN MOTOR	YDK75-6U	1	1		MF			
5	S70 K04 115	PROPELLER FAN 4		1	1					
6	S70 K01 097	NUT	M6	1	1					
7	S70 E16 202	THERMISTOR (DISCHARGE)		1	1		TH4			
8	S70 36L 467	MUFFLER		1						
9	S70 E00 413	CHARGE PLUG		2	2					
10	S70 300 418	STOP VALVE (LIQUID)	3/8"	1	1					
11	S70 068 400	COMPRESSOR	NE52VNJMT	1	1		MC			
12	S70 E04 236	CRANKCASE HEATER	240V / 38W	1	1		CH			
13	S70 E03 440	ACCUMULATOR		1	1					
14	S70 E04 411	BALL VALVE	5/8"	1	1					
15	S70 36L 450	STRAINER	#50-16	1	1					
16	S70 350 242	4-WAY VALVE SOLENOID COIL		1			21S4			
17	S70 A00 403	4-WAY VALVE (REVERSING)		1						
18	S70 E15 202	THERMISTOR(LIQUID, CONDENSER / EVAPORATOR)		1	1		TH3, TH6			
19	S70 E02 401	LINEAR EXPANSION VALVE		1	1		LEV			
20	S70 E03 408	HEAT EXCHANGER		1	1					
21	S70 E00 208	HIGH PRESSURE SWITCH	OFF:3.3MPa ON:2.6MPa	1	1		63H			
22	S70 31L 315	OUTDOOR CONTROLLER BOARD		1	1		O.B			
23	S70 520 239	FUSE	6.3A	4	4	(PART OF BOARD)	FUSE			
24	S70 30L 255	OUTDOOR FAN CAPACITOR	2.2 μ F \times 440V	1	1		C3			
25	S70 976 723	COMPRESSOR CAPACITOR	60 μ F \times 450V	1	1		C5			

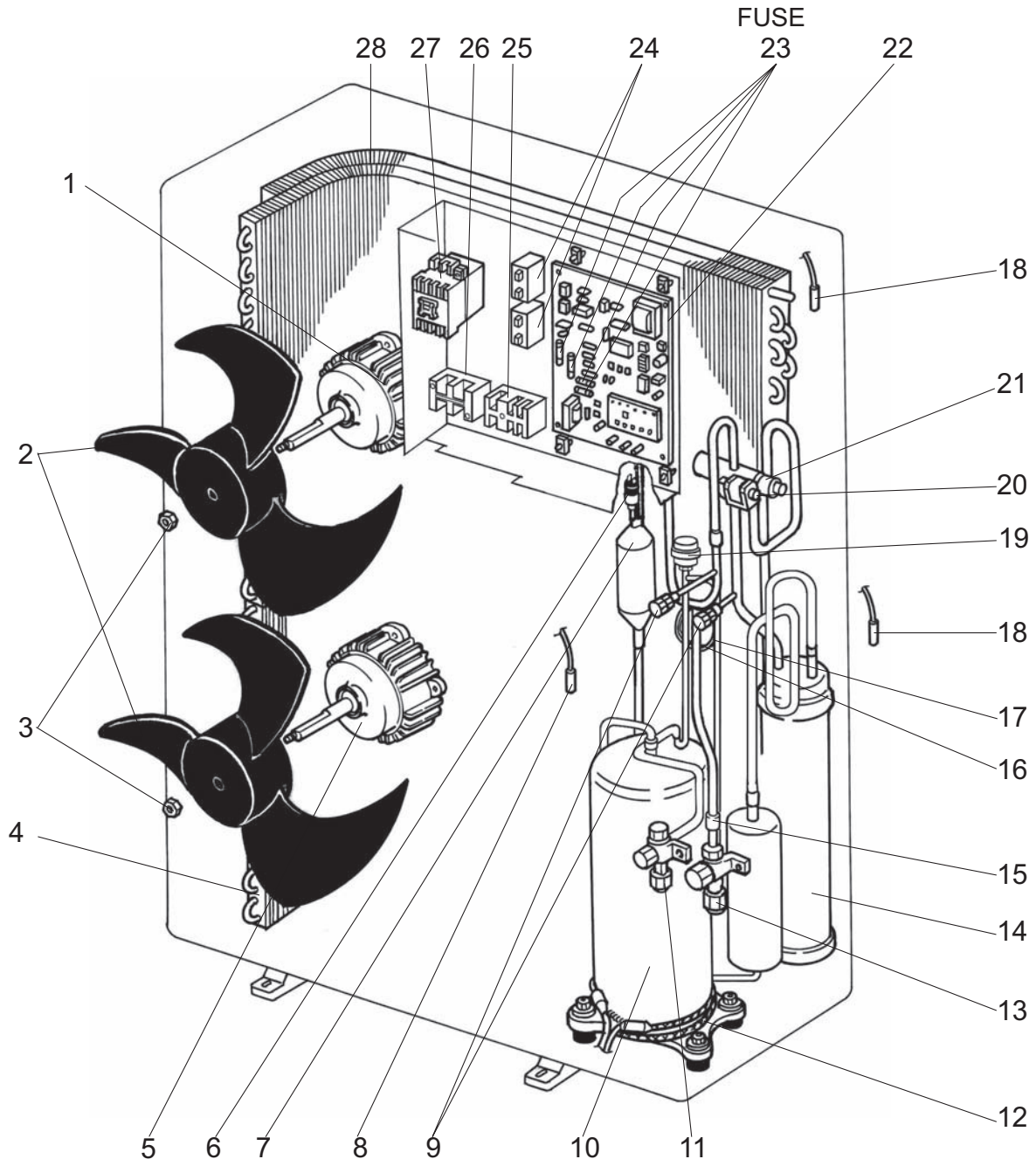
FUNCTIONAL PARTS
PUH-P71YGAA.UK
PU-P71YGAA.UK





No.	Part No.	Part Name	Specification	Q'ty/set		Remarks	Wiring Diagram Symbol	Recommended Q'ty	Price	
				PUH-P71Y	PU-P71Y				Unit	Amount
				GAA.UK	GAA.UK					
1	S70 331 708	CONTACTOR	MSO-N11	1	1		51C,52C			
2	S70 E10 716	TERMINAL BLOCK	4P(L1,L2,L3,N)	1	1		TB1			
3	S70 E04 716	TERMINAL BLOCK	3P(S1,S2,S3)	1	1		TB2			
4	S70 K05 763	OUTDOOR FAN MOTOR	YDK75-6U	1	1		MF			
5	S70 K04 115	PROPELLER FAN 4		1	1					
6	S70 K01 097	NUT	M6	1	1					
7	S70 E16 202	THERMISTOR (DISCHARGE)		1	1		TH4			
8	S70 36L 467	MUFFLER		1						
9	S70 E00 413	CHARGE PLUG		2	2					
10	S70 300 418	STOP VALVE (LIQUID)	3/8"	1	1					
11	S70 069 400	COMPRESSOR	NE52YDKMT	1	1		MC			
12	S70 E04 236	CRANKCASE HEATER	240V / 38W	1	1		CH			
13	S70 E03 440	ACCUMULATOR		1	1					
14	S70 E04 411	BALL VALVE	5/8"	1	1					
15	S70 36L 450	STRAINER	#50-16	1	1					
16	S70 350 242	4-WAY VALVE SOLENOID COIL		1			21S4			
17	S70 A00 403	4-WAY VALVE (REVERSING)		1						
18	S70 E15 202	THERMISTOR (LIQUID , CONDENSER / EVAPORATOR)		1	1		TH3, TH6			
19	S70 E02 401	LINEAR EXPANSION VALVE		1	1		LEV			
20	S70 E03 408	HEAT EXCHANGER		1	1					
21	S70 E00 208	HIGH PRESSURE SWITCH	OFF:3.3MPa ON:2.6MPa	1	1		63H			
22	S70 32L 315	OUTDOOR CONTROLLER BOARD		1	1		O.B			
23	S70 520 239	FUSE	6.3A	4	4	(PART OF BOARD)	FUSE			
24	S70 30L 255	OUTDOOR FAN CAPACITOR	2.2 μ F \times 440V	1	1		C3			

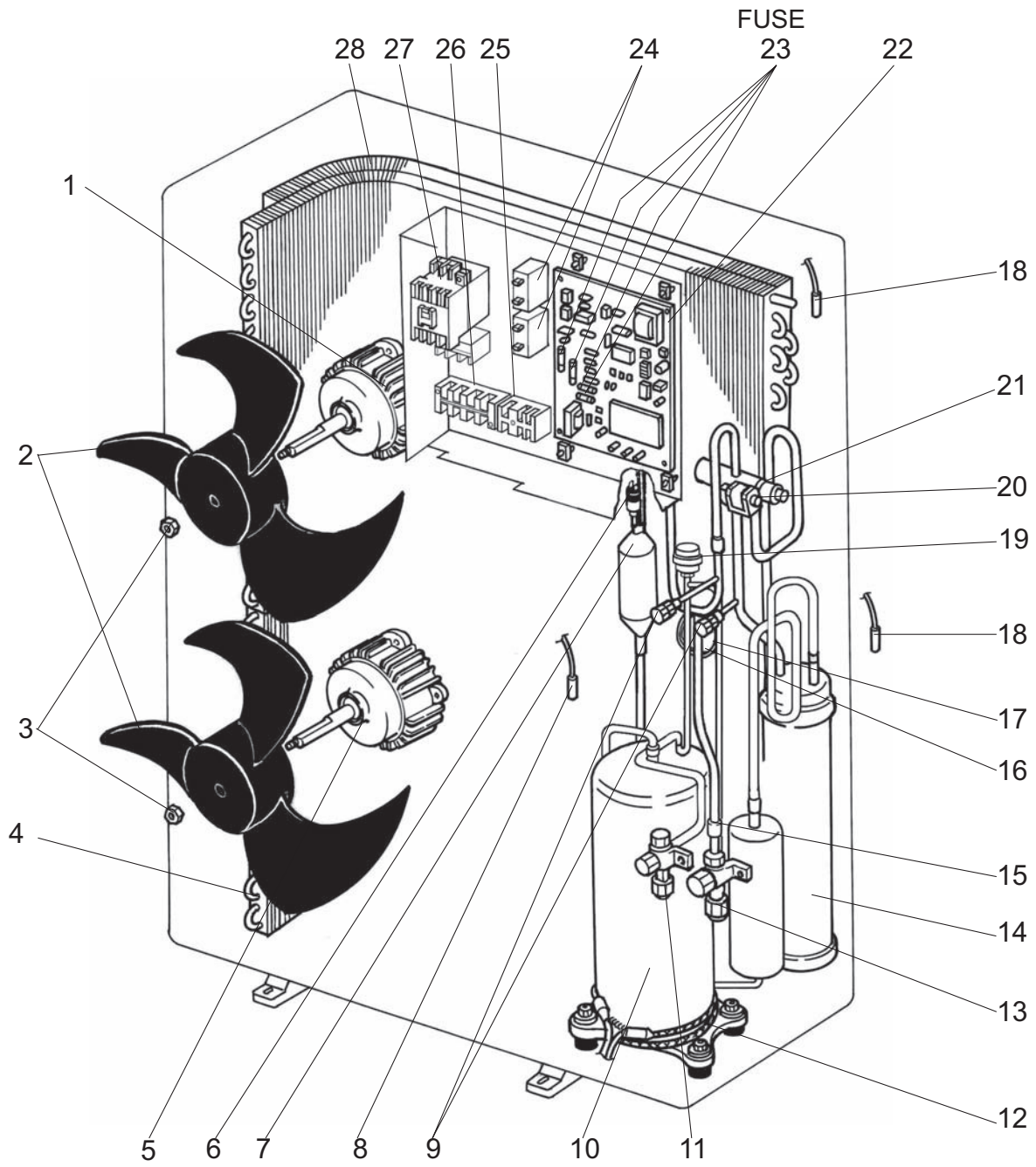
FUNCTIONAL PARTS
PUH-P100VGAA.UK
PU-P100VGAA.UK



Part number that are circled are not shown in the figure.

No.	Part No.	Part Name	Specification	Q'ty/set		Remarks	Wiring Diagram Symbol	Recom-mended Q'ty	Price	
				PUH-P100V	PU-P100V				Unit	Amount
				GAA.UK	GAA.UK					
1	S70 E03 763	OUTDOOR FAN MOTOR	N026P72MT	1	1		MF			
2	S70 30L 115	PROPELLER FAN 4		2	2					
3	S70 30L 097	NUT	M8	2	2					
4	S70 E05 408	HEAT EXCHANGER		1	1					
5	S70 E04 763	OUTDOOR FAN MOTOR	N02A672MT	1	1		MF			
6	S70 E00 208	HIGH PRESSURE SWITCH	OFF:3.3MPa ON:2.6MPa	1	1		63H			
7	S70 42L 467	MUFFLER		1						
8	S70 E18 202	THERMISTOR (DISCHARGE)		1	1		TH4			
9	S70 E00 413	CHARGE PLUG		2	2					
10	S70 071 400	COMPRESSOR	NE56VNJMT	1	1		MC			
11	S70 300 418	STOP VALVE (LIQUID)	3/8"	1	1					
12	S70 E05 236	CRANKCASE HEATER	240V / 38W	1	1		CH			
13	S70 E05 411	BALL VALVE	3/4"	1	1					
14	S70 E05 440	ACCUMULATOR		1	1					
15	S70 42L 450	STRAINER	#50-19.1	1	1					
16	S70 E01 425	CAPILLARY TUBE	$\phi 4.0 \times \phi 3.0 \times 350\text{mm}$	1	1					
17	S70 E02 425	CAPILLARY TUBE	$\phi 4.0 \times \phi 3.0 \times 350\text{mm}$	1	1					
18	S70 E14 202	THERMISTOR(LIQUID, CONDENSER / EVAPORATOR)		1	1		TH3, TH6			
19	S70 E05 401	LINEAR EXPANSION VALVE		1	1		LEV			
20	S70 350 242	4-WAY VALVE SOLENOID COIL		1			21S4			
21	S70 260 403	4-WAY VALVE (REVERSING)		1						
22	S70 31L 315	OUTDOOR CONTROLLER BOARD		1	1		O.B			
23	S70 520 239	FUSE	6.3A	4	4	(PART OF BOARD)	FUSE			
24	S70 30L 255	OUTDOOR FAN CAPACITOR	2.2 μ F \times 440V	2	2		C3, C4			
25	S70 E04 716	TERMINAL BLOCK	3P(S1,S2,S3)	1	1		TB2			
26	S70 E03 716	TERMINAL BLOCK	2P(L,N)	1	1		TB1			
27	S70 330 708	CONTACTOR	S-N18EX	1	1		52C			
28	S70 E04 408	HEAT EXCHANGER		1	1					
29	S70 976 723	COMPRESSOR CAPACITOR	60 μ F \times 450V	1	1		C5			

FUNCTIONAL PARTS
PUH-P100YGAA.UK
PU-P100YGAA.UK

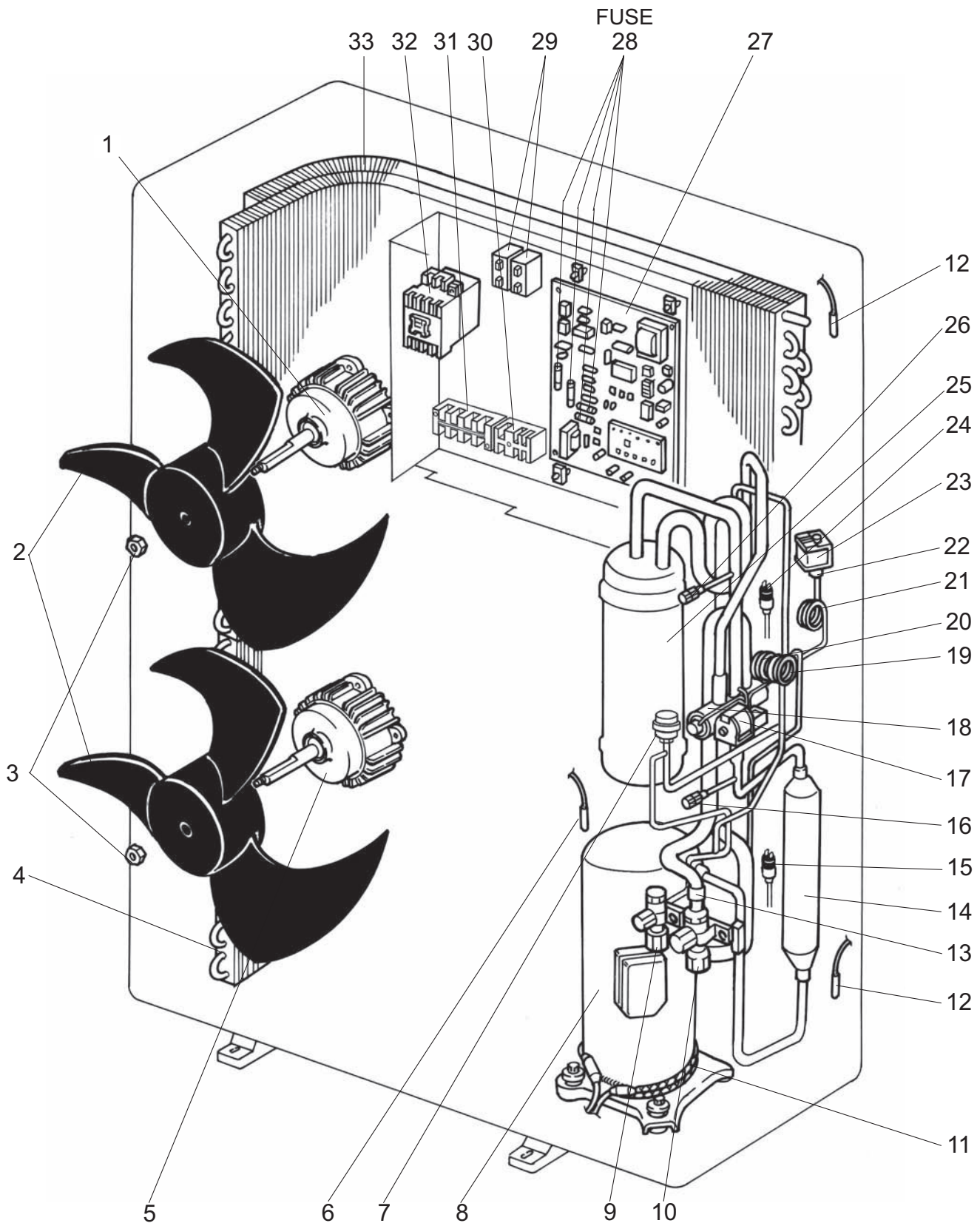


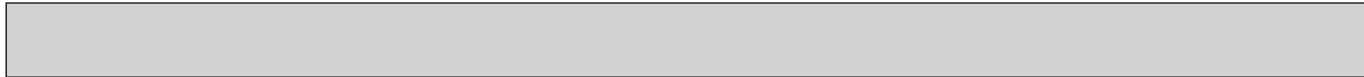
No.	Part No.	Part Name	Specification	Q'ty/set		Remarks	Wiring Diagram Symbol	Recommended Q'ty	Price	
				PUH-100Y	PU-P100Y				Unit	Amount
				GAA.UK	GAA.UK					
1	S70 E03 763	OUTDOOR FAN MOTOR	N026P72MT	1	1		MF			
2	S70 30L 115	PROPELLER FAN 4		2	2					
3	S70 30L 097	NUT	M8	2	2					
4	S70 E05 408	HEAT EXCHANGER		1	1					
5	S70 E04 763	OUTDOOR FAN MOTOR	N02A672MT	1	1		MF			
6	S70 E00 208	HIGH PRESSURE SWITCH	OFF:3.3MPa ON:2.6MPa	1	1		63H			
7	S70 42L 467	MUFFLER		1						
8	S70 E18 202	THERMISTOR (DISCHARGE)		1	1		TH4			
9	S70 E00 413	CHARGE PLUG		2	2					
10	S70 070 400	COMPRESSOR	NE56YDKMT	1	1		MC			
11	S70 300 418	STOP VALVE (LIQUID)	3/8"	1	1					
12	S70 E05 236	CRANKCASE HEATER	240V / 38W	1	1		CH			
13	S70 E05 411	BALL VALVE	3/4"	1	1					
14	S70 E05 440	ACCUMULATOR		1	1					
15	S70 42L 450	STRAINER	#50-19.1	1	1					
16	S70 E01 425	CAPILLARY TUBE	$\phi 4.0 \times \phi 3.0 \times 350\text{mm}$	1	1					
17	S70 E02 425	CAPILLARY TUBE	$\phi 4.0 \times \phi 3.0 \times 350\text{mm}$	1	1					
18	S70 E14 202	THERMISTOR (LIQUID, CONDENSER / EVAPORATOR)		1	1		TH3, TH6			
19	S70 E05 401	LINEAR EXPANSION VALVE		1	1		LEV			
20	S70 350 242	4-WAY VALVE SOLENOID COIL		1			21S4			
21	S70 260 403	4-WAY VALVE (REVERSING)		1						
22	S70 32L 315	OUTDOOR CONTROLLER BOARD		1	1		O.B			
23	S70 520 239	FUSE	6.3A	4	4	(PART OF BOARD)	FUSE			
24	S70 30L 255	OUTDOOR FAN CAPACITOR	$2.2\mu F \times 440V$	2	2		C3, C4			
25	S70 E04 716	TERMINAL BLOCK	3P(S1,S2,S3)	1	1		TB2			
26	S70 E10 716	TERMINAL BLOCK	4P(L1,L2,L3,N)	1	1		TB1			
27	S70 331 708	CONTACTOR	MSO-N11	1	1		51C, 52C			
28	S70 E04 408	HEAT EXCHANGER		1	1					

FUNCTIONAL PARTS

PUH-P125YGAA.UK PUH-P140YGAA.UK

PU-P125YGAA.UK PU-P140YGAA.UK





Part number that is circled is not shown in the figure.

No.	Part No.	Part Name	Specification	Q'ty/set				Remarks	Wiring Diagram Symbol	Recommended Q'ty	Price	
				PUH-P•YGAA.UK		PU-P•YGAA.UK					Unit	Amount
				125	140	125	140					
1	S70 E03 763	OUTDOOR FAN MOTOR	N026P72MT	1	1	1	1		MF			
2	S70 30L 115	PROPELLER FAN 4		2	2	2	2					
3	S70 30L 097	NUT	M8	2	2	2	2					
4	S70 E07 408	HEAT EXCHANGER (UNDER)		1	1	1	1					
5	S70 E04 763	OUTDOOR FAN MOTOR	N02A672MT	1	1	1	1		MF			
6	S70 E19 202	THERMISTOR (DISCHARGE)		1	1	1	1		TH4			
7	S70 E06 401	LINEAR EXPANSION VALVE		1	1	1	1		LEV			
8	S70 H10 400	COMPRESSOR	BE82YADMT	1		1			MC			
	S70 H60 400	COMPRESSOR	BE96YADMT		1		1		MC			
9	S70 300 418	STOP VALVE (LIQUID)	3/8"	1	1	1	1					
10	S70 E05 411	BALL VALVE	3/4"	1	1	1	1					
11	S70 H40 236	CRANKCASE HEATER	240V / 38W	1	1	1	1		CH			
12	S70 E17 202	THERMISTOR(LIQUID, CONDENSER/EVAPORATOR)		1	1	1	1		TH3, TH6			
13	S70 42L 450	STRAINER	#50-19.1	1	1	1	1					
14	S70 42H 467	MUFFLER		1	1							
15	S70 E00 208	HIGH PRESSURE SWITCH	OFF:3.3MPa ON :2.6MPa	1	1	1	1		63H			
16	S70 E01 413	CHARGE PLUG		1	1	1	1					
17	S70 251 242	4-WAY VALVE SOLENOID COIL		1	1				21S4			
18	S70 E02 403	4-WAY VALVE (REVERSING)		1	1							
19	S70 E05 425	CAPILLARY TUBE	φ4.0 × φ3.0 × 200mm	1	1	1	1					
20	S70 E06 425	CAPILLARY TUBE	φ4.0 × φ3.0 × 200mm	1	1	1	1					
21	S70 E03 425	CAPILLARY TUBE	φ4.0 × φ2.0 × 400mm	1								
	S70 E04 425	CAPILLARY TUBE	φ4.0 × φ3.0 × 450mm		1							
22	S70 A14 428	BYPASS VALVE		1	1							
23	S70 351 242	BYPASS VALVE SOLENOID COIL		1	1				SV			
24	S70 H20 209	LOW PRESSURE SWITCH	OFF:-0.03MPa ON :0.05MPa	1	1	1	1		63L			
25	S70 E06 440	ACCUMULATOR		1	1	1	1					
26	S70 E00 413	CHARGE PLUG		1	1	1	1					
27	S70 33H 315	OUTDOOR CONTROLLER BOARD		1	1	1	1		O.B			
28	S70 520 239	FUSE	6.3A	4	4	4	4	(PART OF BOARD)	FUSE			
29	S70 17T 255	FAN MOTOR CAPACITOR	3.5μF × 440V	2	2	2	2		C3, C4			
30	S70 E04 716	TERMINAL BLOCK	3P(S1,S2,S3)	1	1	1	1		TB2			
31	S70 E10 716	TERMINAL BLOCK	4P(L1,L2,L3,N)	1	1	1	1		TB1			
32	S70 334 708	CONTACTOR	MSO-N20	1	1	1	1		51C, 52C			
33	S70 H12 408	HEAT EXCHANGER (TOP)		1	1	1	1					
34	S70 30L 450	STRAINER	#50-9.52	1	1	1	1					
35	S70 H30 450	STRAINER ASSY		1	1	1	1					

Mr. SLIM™

 **MITSUBISHI ELECTRIC CORPORATION**
HEAD OFFICE : MITSUBISHI DENKI BLDG., 2-2-3, MARUNOUCHI, CHIYODA-KU, TOKYO 100-8310, JAPAN