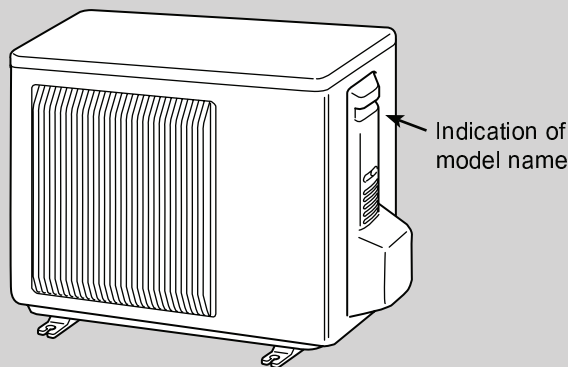


# TECHNICAL & SERVICE MANUAL

**R410A**

**Outdoor unit**

[Model names]	[Service Ref.]	
SUZ-KA25VA	SUZ-KA25VA.TH	SUZ-KA25VAR1.TH
SUZ-KA35VA	SUZ-KA35VA.TH	SUZ-KA35VAR1.TH
SUZ-KA25VAH	SUZ-KA25VAH.TH	SUZ-KA25VAHR1.TH
SUZ-KA35VAH	SUZ-KA35VAH.TH	SUZ-KA35VAHR1.TH
SUZ-KA50VA	SUZ-KA50VA.TH	
	SUZ-KA50VA <sub>1</sub> .TH	
	SUZ-KA50VAR2.TH	
SUZ-KA60VA	SUZ-KA60VA.TH	
	SUZ-KA60VA <sub>1</sub> .TH	
	SUZ-KA60VAR2.TH	
SUZ-KA71VA	SUZ-KA71VA.TH	
	SUZ-KA71VA <sub>1</sub> .TH	



SUZ-KA25VA(H).TH	SUZ-KA25VA(H)R1.TH
SUZ-KA35VA(H).TH	SUZ-KA35VA(H)R1.TH

## CONTENTS

1. COMBINATION OF INDOOR AND OUTDOOR UNITS...	2
2. TECHNICAL CHANGES .....	3
3. PART NAMES AND FUNCTIONS.....	7
4. SPECIFICATION.....	8
5. NOISE CRITERIA CURVES.....	12
6. OUTLINES AND DIMENSIONS.....	13
7. WIRING DIAGRAM.....	15
8. REFRIGERANT SYSTEM DIAGRAM.....	23
9. PERFORMANCE CURVES.....	29
10. ACTUATOR CONTROL.....	57
11. SERVICE FUNCTIONS.....	58
12. TROUBLESHOOTING.....	58
13. DISASSEMBLY INSTRUCTIONS.....	103
14. PARTS LIST.....	113
15. RoHS PARTS LIST.....	119

**Revision:**

- "15. RoHS PARTS LIST" has been modified in REVISED EDITION-H.

- Please void OC322 REVISED EDITION-G.

**Note:**

This service manual describes technical data of the outdoor units.

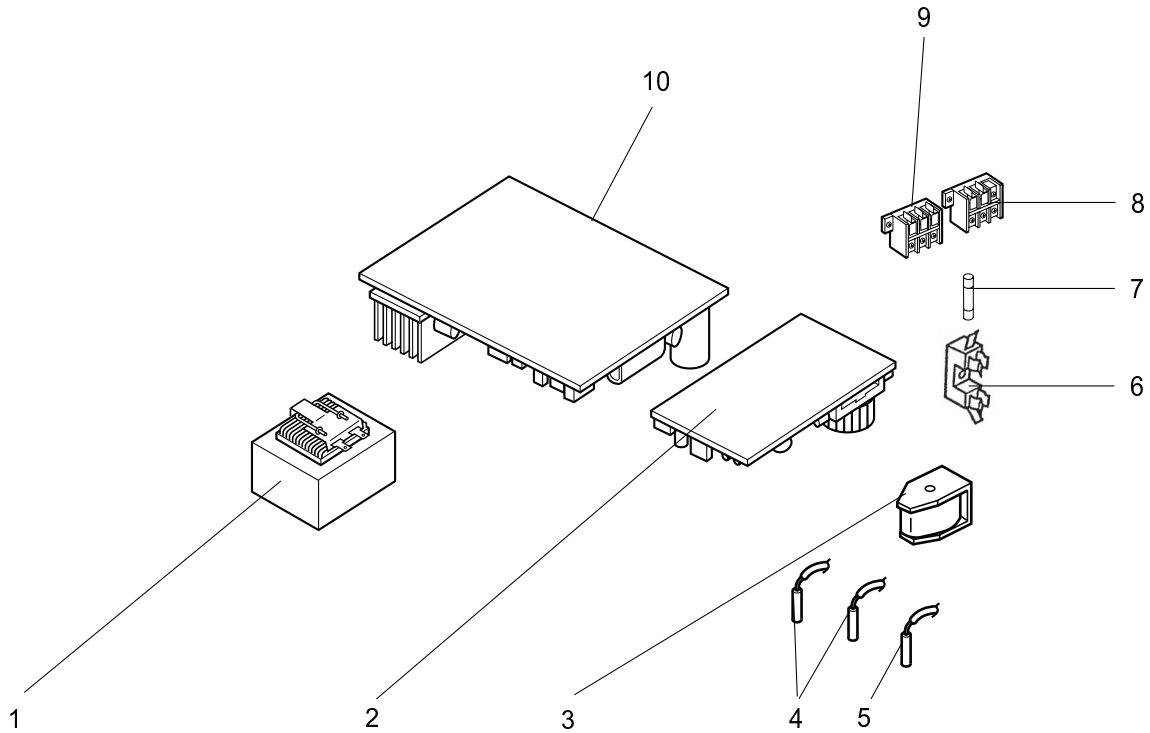
RoHS compliant products have <G> mark on the spec name plate. For servicing of RoHS compliant products, refer to the RoHS Parts List.

# 14

## PARTS LIST (non-RoHS compliant)

SUZ-KA25VA.TH SUZ-KA35VA.TH  
 SUZ-KA25VAH.TH SUZ-KA35VAH.TH

### 14-1. OUTDOOR UNIT ELECTRICAL PARTS



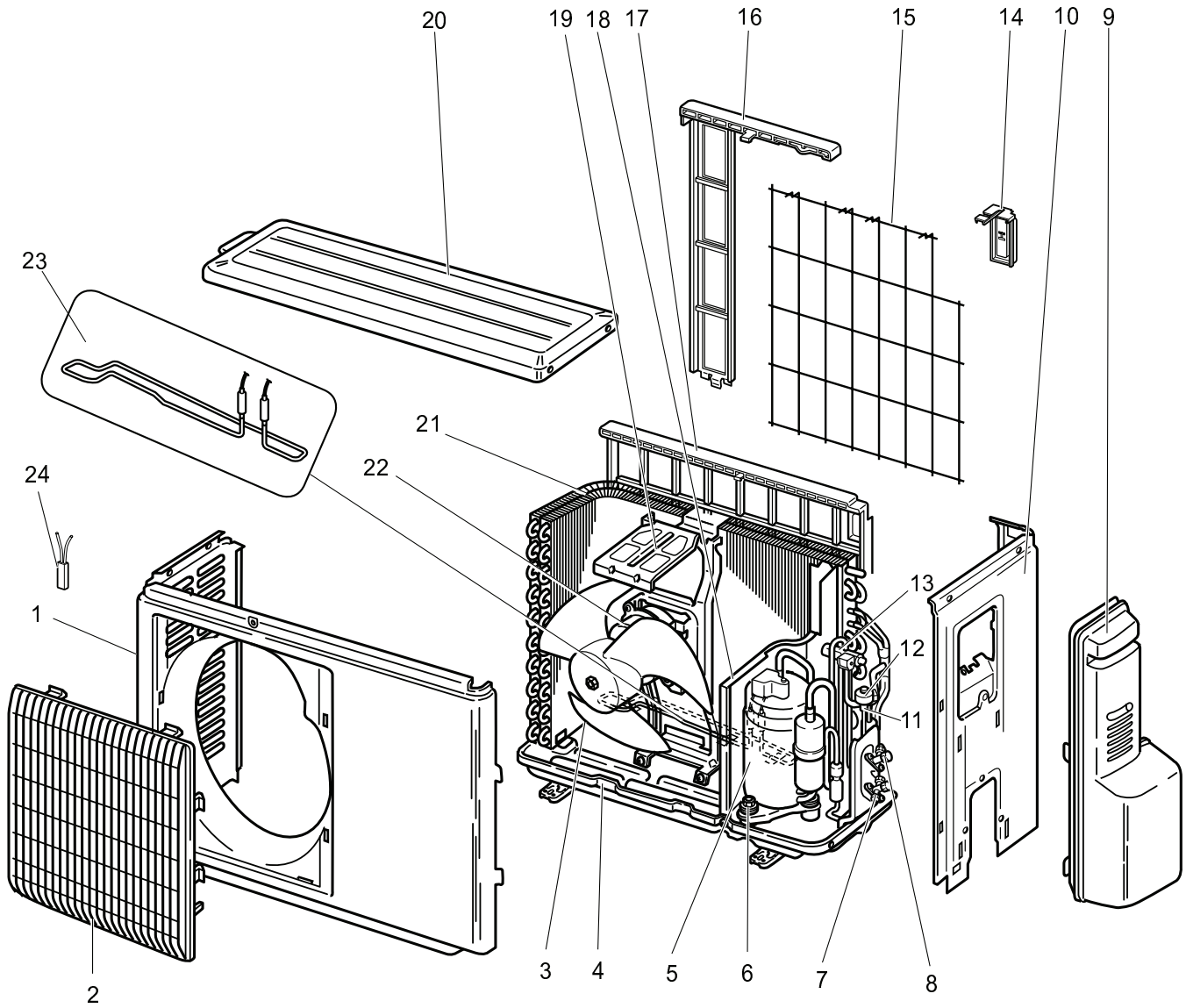
Part numbers that are circled are not shown in the illustration.

No.	Part No.	Part Name	Symbol in Wiring Diagram	Q'ty/unit				Remarks
				SUZ-KA25VA.TH	SUZ-KA25VAH.TH	SUZ-KA35VA.TH	SUZ-KA35VAH.TH	
1	E02 838 337	REACTOR	L61	1	1	1	1	
2	E02 927 444	POWER P.C. BOARD		1		1		
	E02 931 444	POWER P.C. BOARD			1		1	
3	E02 927 490	R.V. COIL	Z1S4	1	1	1	1	
4	E02 927 306	THERMSTOR SET	RT61,RT62	1	1	1	1	DEFROST, DISCHARGE
5	E02 927 308	AMBIENT TEMPERATURE THERMSTOR	RT65	1	1	1	1	
6	E02 735 241	FUSE HOLDER		1	1	1	1	
7	E02 735 382	FUSE	F61	1	1	1	1	250V/20A
8	E02 573 375	TERMNAL BLOCK	TB1	1	1	1	1	3P
9	E02 927 374	TERMNAL BLOCK	TB2	1	1	1	1	3P
10	E07 168 451	INVERTER P.C. BOARD		1				Including heat sink and RT64
	E07 184 451	INVERTER P.C. BOARD			1			Including heat sink and RT64
	E07 169 451	INVERTER P.C. BOARD				1		Including heat sink and RT64
	E07 185 451	INVERTER P.C. BOARD					1	Including heat sink and RT64
⑪	E02 127 382	FUSE	F71,F801	1	1	1	1	250V/3.15A
⑫	E02 661 385	VARISTOR	NR62,NR63,NR64	1	1	1	1	

# PARTS LIST (non-RoHS compliant)

SUZ-KA25VA.TH SUZ-KA35VA.TH  
SUZ-KA25VAH.TH SUZ-KA35VAH.TH

## 14-2. OUTDOOR UNIT STRUCTURAL PARTS AND FUNCTIONAL PARTS



# PARTS LIST (non-RoHS compliant)

SUZ-KA25VA.TH SUZ-KA35VA.TH  
 SUZ-KA25VAH.TH SUZ-KA35VAH.TH

## 14-2. OUTDOOR UNIT STRUCTURAL PARTS AND FUNCTIONAL PARTS

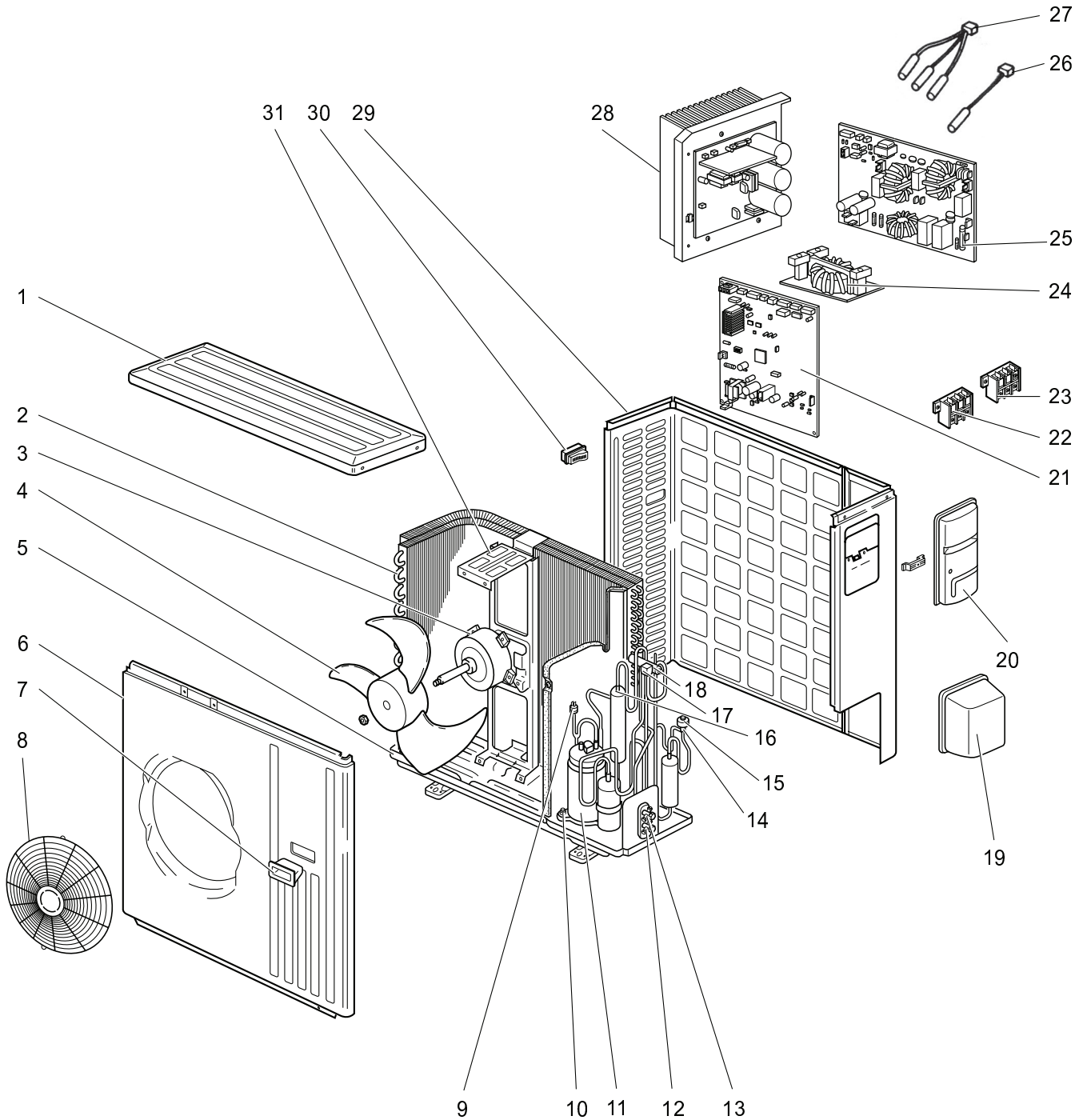
Part number that is circled is not shown in the illustration.

No.	Part No.	Part Name	Symbol in Wiring Diagram	Q'ty/unit				Remarks
				SUZ- KA25VA .TH	SUZ- KA25VAH .TH	SUZ- KA35VA .TH	SUZ- KA35VAH .TH	
1	E02 927 232	CABINET		1	1	1	1	
2	E02 927 521	GRILLE		1	1	1	1	
3	E02 927 501	PROPELLER FAN		1	1	1	1	
4	E02 927 290	BASE		1		1		
	E02 928 290	BASE			1		1	
5	E02 927 900	COMPRESSOR	MC	1	1			KNB073FDVH
	E02 929 900	COMPRESSOR	MC			1	1	KNB092FCAH
6	E02 065 506	COMPRESSOR RUBBER SET		3	3	3	3	3RUBBERS/SET
7	E02 927 661	STOP VALVE (GAS)		1	1	1	1	φ9.52
8	E02 927 662	STOP VALVE (LIQUID)		1	1	1	1	φ6.35
9	E02 927 245	SERVICE PANEL		1	1	1	1	
10	E02 927 233	BACK PANEL		1	1	1	1	
11	E02 927 640	EXPANSION VALVE		1	1			
	E02 838 640	EXPANSION VALVE				1	1	
12	E02 927 493	EXPANSION VALVE COIL	LEV	1	1	1	1	
13	E02 927 961	4-WAY VALVE		1	1	1	1	
14	E02 928 079	THERMO HOLDER			1			
	E02 930 079	THERMO HOLDER					1	
15	E02 928 525	CONDENSER WIRE NET			1			
	E02 930 525	CONDENSER WIRE NET					1	
16	E02 928 523	CONDENSER NET			1			
	E02 930 523	CONDENSER NET					1	
17	E02 838 523	CONDENSER NET		1				
	E02 929 523	CONDENSER NET				1		
18	E02 927 293	SEPARATOR		1				
	E02 928 293	SEPARATOR			1			
	E02 929 293	SEPARATOR				1		
	E02 930 293	SEPARATOR					1	
19	E02 927 515	MTOR SUPPORT		1	1			
	E02 929 515	MTOR SUPPORT				1	1	
20	E02 927 297	TOP PANEL		1	1	1	1	
21	E02 927 630	OUTDOOR HEAT EXCHANGER		1	1			
	E02 929 630	OUTDOOR HEAT EXCHANGER				1	1	
22	E02 927 301	OUTDOOR FAN MOTOR	MF	1	1	1	1	RCOJ 50-□□
23	E02 840 526	DEFROST HEATER	H		1		1	
24	E02 840 381	HEATER PROTECTOR	26H		1		1	
25	E02 927 937	CAPILLARY TUBE		1	1			φ3.0×φ2.0×240
	E02 735 936	CAPILLARY TUBE				2	2	φ3.0×φ1.8×600

# PARTS LIST (non-RoHS compliant)

SUZ-KA50VA.TH SUZ-KA60VA.TH SUZ-KA71VA.TH

14-3. OUTDOOR UNIT STRUCTURAL PARTS, ELECTRICAL PARTS AND FUNCTIONAL PARTS



# PARTS LIST (non-RoHS compliant)

SUZ-KA50VA.TH SUZ-KA60VA.TH SUZ-KA71VA.TH

## 14-3. OUTDOOR UNIT STRUCTURAL PARTS, ELECTRICAL PARTS AND FUNCTIONAL PARTS

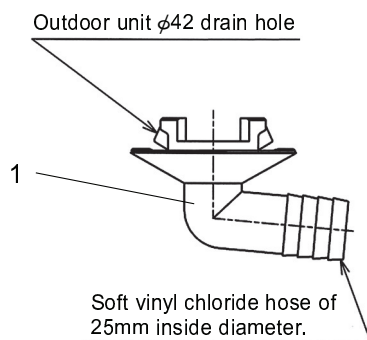
Part numbers that are circled are not shown in the illustration.

No.	Part No.	Part Name	Symbol in Wiring Diagram	Q'ty/unit			Remarks
				SUZ-KA-VA.TH			
				50	60	71	
1	E02 819 297	TOP PANEL		1	1	1	
2	E02 851 630	OUTDOOR HEAT EXCHANGER		1	1		
	E02 853 630	OUTDOOR HEAT EXCHANGER				1	
3	E02 938 301	OUTDOOR FAN MOTOR	MF	1	1	1	RCOJ 60-□□
4	E02 851 501	PROPELLER FAN		1	1	1	
5	E02 851 290	BASE		1	1		
	E02 853 290	BASE				1	
6	E02 819 232	CABINET		1	1	1	
7	E02 819 009	HANDLE		1	1	1	
8	E02 819 521	FAN GUARD		1	1	1	
9	E02 853 646	HIGH PRESSURE SWITCH	HPS			1	
10	E02 065 506	COMPRESSOR RUBBER SET		3	3		3RUBBERS/SET
	E02 853 506	COMPRESSOR RUBBER SET				3	3RUBBERS/SET
11	E02 939 900	COMPRESSOR	MC	1	1		SNB130FLDH1
	E02 853 900	COMPRESSOR	MC			1	TNB220FMCH
12	E02 851 661	STOP VALVE (GAS)		1			φ127
	E02 819 661	STOP VALVE (GAS)			1	1	φ15.88
13	E02 821 662	STOP VALVE (LIQUID)		1	1		φ6.35
	E02 822 662	STOP VALVE (LIQUID)				1	φ9.52
14	E02 851 640	EXPANSION VALVE		1	1		
	E02 853 640	EXPANSION VALVE				1	
15	E02 851 493	EXPANSION VALVE COIL	LEV	1	1	1	
16	E02 853 299	OIL SEPARATOR				1	
17	E02 935 490	R.V. COIL	Z1S4	1	1	1	
18	E02 891 961	4-WAY VALVE		1	1	1	
19	E02 819 650	VALVE COVER		1	1	1	
20	E02 819 245	SERVICE PANEL		1	1	1	
21	E07 170 450	OUTDOOR ELECTRONIC CONTROL P.C. BOARD		1			
	E07 171 450	OUTDOOR ELECTRONIC CONTROL P.C. BOARD			1		
	E07 223 450	OUTDOOR ELECTRONIC CONTROL P.C. BOARD				1	
22	E02 935 374	TERMINAL BLOCK	TB1	1	1	1	3P
23	E02 823 375	TERMINAL BLOCK	TB2	1	1	1	3P
24	E02 851 337	REACTOR	L	1	1	1	
25	E02 935 444	NOISE FILTER P.C. BOARD		1	1	1	
26	E02 935 309	AMBIENT TEMPERATURE THERMISTOR	RT65	1	1	1	
27	E02 851 308	THERMISTOR SET	RT61,RT62,RT68	1	1	1	DEFROST DISCHARGE OUTDOOR HEAT EXCHANGER
28	E02 935 440	POWER BOARD		1	1	1	Including heat sink and RT64
29	E02 819 233	BACK PANEL (OUT)		1	1	1	
30	E02 817 009	HANDLE		1	1	1	
31	E02 851 515	MOTOR SUPPORT		1	1	1	
③②	E02 127 382	FUSE	F 801	1	1	1	250V/3.15A
③③	E02 737 382	FUSE	F 911	1	1	1	250V/1A
③④	E02 935 385	FUSE & VARISTOR	F 64,NR64	1	1	1	250V/2A
③⑤	E02 851 936	CAPILLARY TUBE (TAPER PIPE)		1	1		φ3.6xφ2.4x50
	E02 853 936	CAPILLARY TUBE (TAPER PIPE)				1	φ3.6xφ2.4x50
	E02 861 936	CAPILLARY TUBE				1	φ1.8xφ0.6x1000

# PARTS LIST (non-RoHS compliant)

SUZ-KA25VA.TH SUZ-KA35VA.TH

## 14-4. DRAIN SOCKET



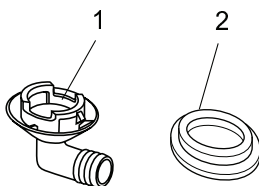
No.	Parts No.	Parts Name	Symbol in Wiring Diagram	Q'ty/unit		Remarks
				SUZ-KA25VA.TH	SUZ-KA35VA.TH	
1	E02 838 704	DRAIN SOCKET		1	1	

SUZ-KA50VA.TH

SUZ-KA60VA.TH

SUZ-KA71VA.TH

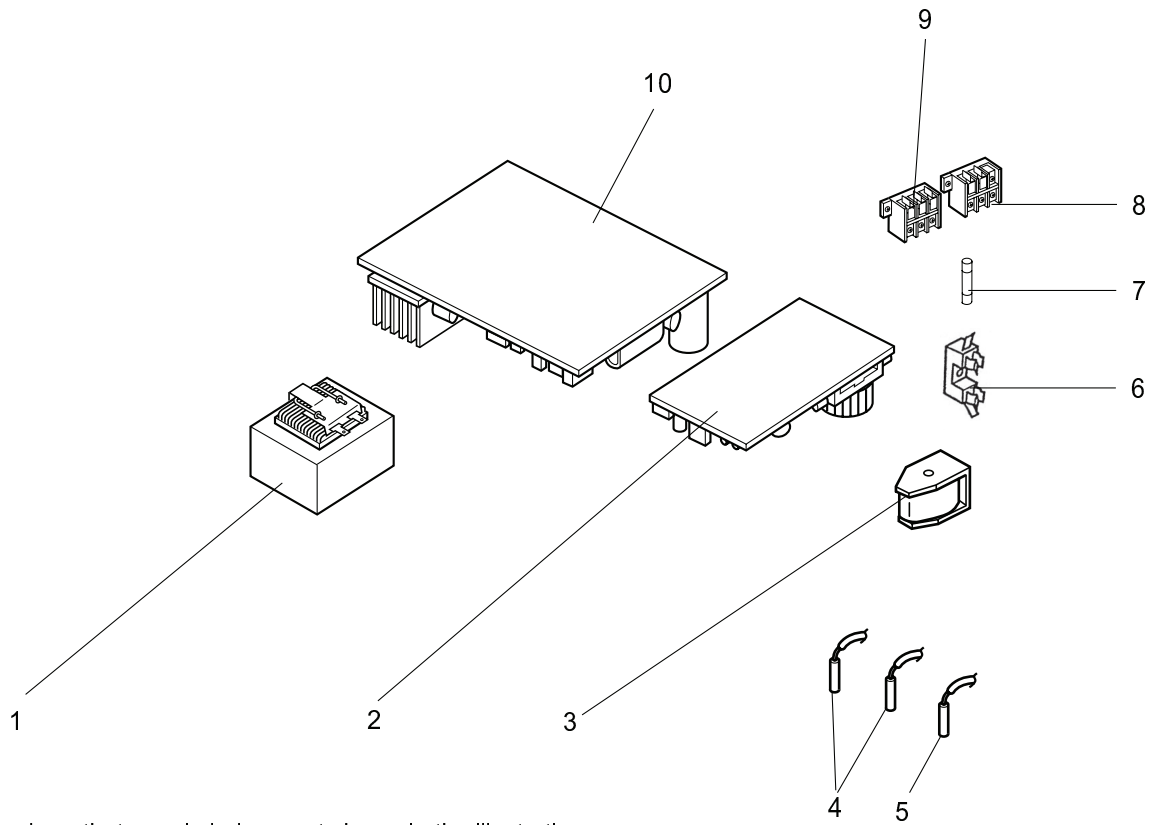
## 14-5. ACCESSORY



No.	Part No.	Part Name	Symbol in Wiring Diagram	Q'ty/unit			Remarks
				SUZ-KA50 VA.TH	SUZ-KA60 VA.TH	SUZ-KA71 VA.TH	
1	E02 817 704	DRAIN SOCKET		1	1	1	
2	E02 444 705	DRAIN CAP		2	2	2	φ33

SUZ-KA25VA.TH SUZ-KA35VA.TH  
 SUZ-KA25VAH.TH SUZ-KA35VAH.TH

15-1. OUTDOOR UNIT ELECTRICAL PARTS



Part numbers that are circled are not shown in the illustration.

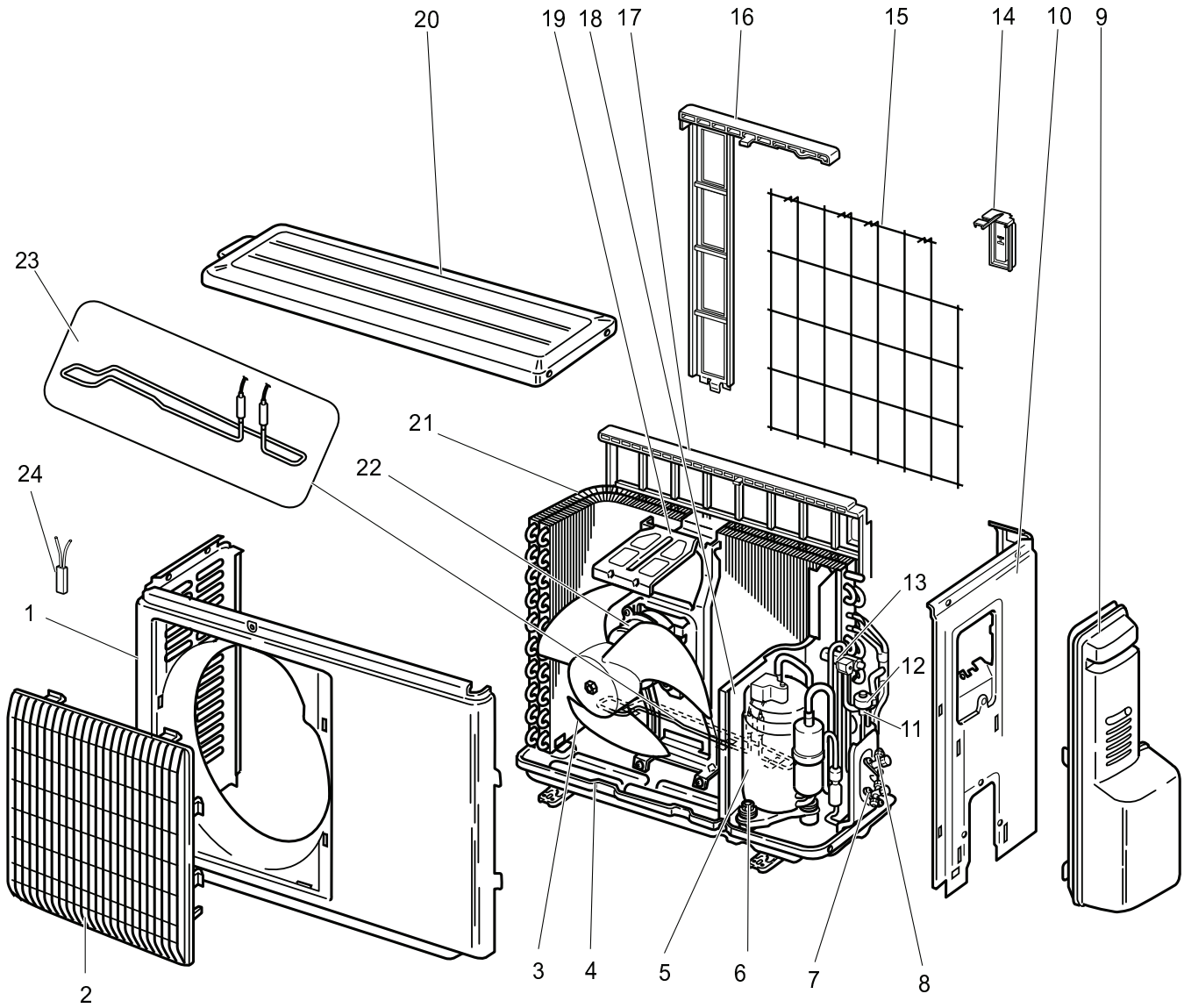
No.	RoHS	Part No.	Part Name	Symbol in Wiring Diagram	Q'ty/unit				Remarks
					SUZ-KA25VA.TH	SUZ-KA25VAH.TH	SUZ-KA35VA.TH	SUZ-KA35VAH.TH	
1	G	E12 838 337	REACTOR	L61	1	1	1	1	
2	G	E12 927 444	POWER P.C. BOARD		1		1		
	G	E12 931 444	POWER P.C. BOARD			1		1	
3	G	E12 927 490	R.V. COIL	Z1S4	1	1	1	1	
4	G	E12 927 306	THERMSTOR SET	RT61,RT62	1	1	1	1	DEFROST, DISCHARGE
5	G	E12 927 308	AMBIENT TEMPERATURE THERMSTOR	RT65	1	1	1	1	
6	G	E12 735 241	FUSE HOLDER		1	1	1	1	
7	G	E12 735 382	FUSE	F61	1	1	1	1	250V/20A
8	G	E12 573 375	TERMNAL BLOCK	TB1	1	1	1	1	3P
9	G	E12 927 374	TERMNAL BLOCK	TB2	1	1	1	1	3P
10	G	E17 168 451	INVERTER P.C. BOARD		1				Including heat sink and RT64
	G	E17 184 451	INVERTER P.C. BOARD			1			Including heat sink and RT64
	G	E17 169 451	INVERTER P.C. BOARD				1		Including heat sink and RT64
	G	E17 185 451	INVERTER P.C. BOARD					1	Including heat sink and RT64
⑪	G	E12 127 382	FUSE	F71,F801	1	1	1	1	250V/3.15A
⑫	G	E12 661 385	VARISTOR	NR62,NR63,NR64	1	1	1	1	



# RoHS PARTS LIST

SUZ-KA25VA.TH SUZ-KA35VA.TH  
SUZ-KA25VAH.TH SUZ-KA35VAH.TH

## 15-2. OUTDOOR UNIT STRUCTURAL PARTS AND FUNCTIONAL PARTS



# RoHS PARTS LIST

SUZ-KA25VA.TH SUZ-KA35VA.TH  
 SUZ-KA25VAH.TH SUZ-KA35VAH.TH

## 15-2. OUTDOOR UNIT STRUCTURAL PARTS AND FUNCTIONAL PARTS

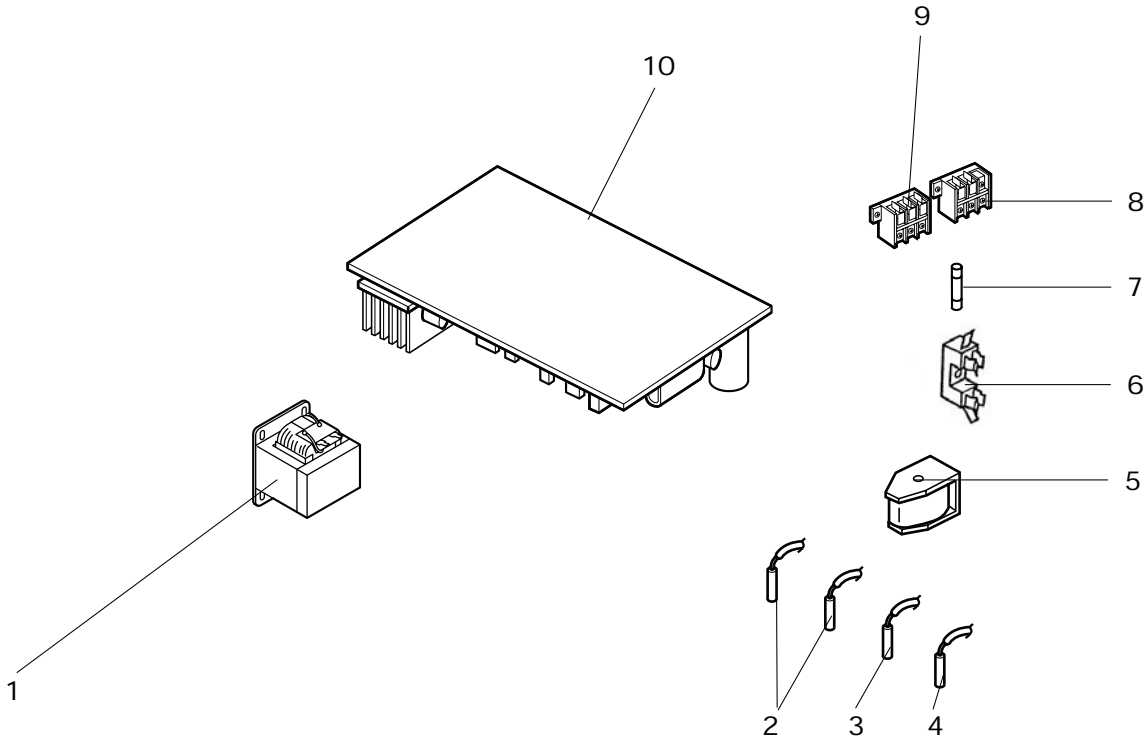
Part number that is circled is not shown in the illustration.

No.	RoHS	Part No.	Part Name	Symbol in Wiring Diagram	Q'ty/unit				Remarks
					SUZ- KA25VA .TH	SUZ- KA25VAH .TH	SUZ- KA35VA .TH	SUZ- KA35VAH .TH	
1	G	E 12 927 232	CABINET		1	1	1	1	
2	G	E 12 927 521	GRILLE		1	1	1	1	
3	G	E 12 927 501	PROPELLER FAN		1	1	1	1	
4	G	E 12 927 290	BASE		1		1		
	G	E 12 928 290	BASE			1		1	
5	G	E 12 927 900	COMPRESSOR	MC	1	1			KNB073FDVHC
	G	E 12 929 900	COMPRESSOR	MC			1	1	KNB092FCAH
6	G	E 12 065 506	COMPRESSOR RUBBER SET		3	3	3	3	3RUBBERS/SET
7	G	E 12 927 661	STOP VALVE (GAS)		1	1	1	1	φ9.52
8	G	E 12 927 662	STOP VALVE (LIQUID)		1	1	1	1	φ6.35
9	G	E 12 927 245	SERVICE PANEL		1	1	1	1	
10	G	E 12 927 233	BACK PANEL		1	1	1	1	
11	G	E 12 927 640	EXPANSION VALVE		1	1			
	G	E 12 838 640	EXPANSION VALVE				1	1	
12	G	E 12 927 493	EXPANSION VALVE COIL	LEV	1	1	1	1	
13	G	E 12 927 961	4-WAY VALVE		1	1	1	1	
14	G	E 12 928 079	THERMO HOLDER			1			
	G	E 12 930 079	THERMO HOLDER					1	
15	G	E 12 928 525	CONDENSER WIRE NET			1			
	G	E 12 930 525	CONDENSER WIRE NET					1	
16	G	E 12 928 523	CONDENSER NET			1			
	G	E 12 930 523	CONDENSER NET					1	
17	G	E 12 838 523	CONDENSER NET		1				
	G	E 12 929 523	CONDENSER NET				1		
18	G	E 12 927 293	SEPARATOR		1				
	G	E 12 928 293	SEPARATOR			1			
	G	E 12 929 293	SEPARATOR				1		
	G	E 12 930 293	SEPARATOR					1	
19	G	E 12 927 515	MOTOR SUPPORT		1	1			
	G	E 12 929 515	MOTOR SUPPORT				1	1	
20	G	E 12 927 297	TOP PANEL		1	1	1	1	
21	G	E 12 927 630	OUTDOOR HEAT EXCHANGER		1	1			
	G	E 12 929 630	OUTDOOR HEAT EXCHANGER				1	1	
22	G	E 12 927 301	OUTDOOR FAN MOTOR	MF	1	1	1	1	RCQJ 50-□□
23	G	E 12 840 526	DEFROST HEATER	H		1		1	
24	G	E 12 840 381	HEATER PROTECTOR	2GH		1		1	
25	G	E 12 927 937	CAPILLARY TUBE		1	1			φ3.0×φ2.0×240
	G	E 12 735 936	CAPILLARY TUBE				2	2	φ3.0×φ1.8×600

# RoHS PARTS LIST

SUZ-KA25VAR1.TH    SUZ-KA35VAR1.TH  
SUZ-KA25VAHR1.TH    SUZ-KA35VAHR1.TH

## 15-3. OUTDOOR UNIT ELECTRICAL PARTS



# RoHS PARTS LIST

SUZ-KA25VAR1.TH SUZ-KA35VAR1.TH  
 SUZ-KA25VAHR1.TH SUZ-KA35VAHR1.TH

## 15-3. OUTDOOR UNIT ELECTRICAL PARTS

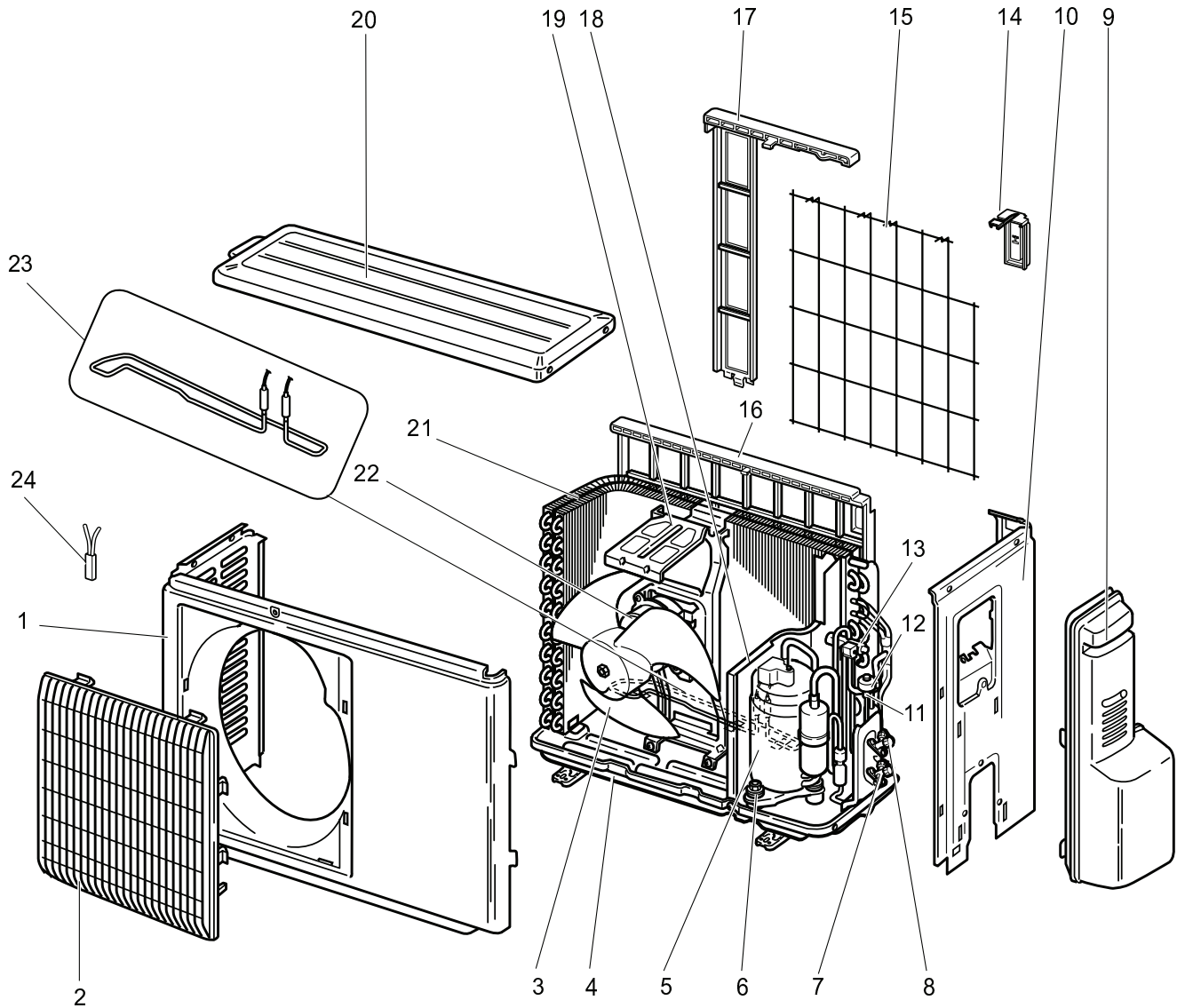
Part numbers that are circled are not shown in the illustration.

No.	RoHS	Part No.	Part Name	Symbol in Wiring Diagram	Q'ty/unit				Remarks
					SUZ-KA-VAR1.TH		SUZ-KA-VAHR1.TH		
					25	35	25	35	
1	G	E12 838 337	REACTOR	L61	1	1	1	1	
2	G	E12 C34 306	THERMISTOR SET	RT61,RT62	1	1	1	1	DEFROST, DISCHARGE
3	G	E12 927 308	AMBIENT TEMPERATURE THERMISTOR	RT65	1	1	1	1	
4	G	E12 C34 307	OUTDOOR HEAT EXCHANGER TEMPERATURE THERMISTOR	RT68	1	1	1	1	
5	G	E12 C34 490	R.V. COIL	21S4	1	1	1	1	
6	G	E12 735 241	FUSE HOLDER		1	1	1	1	
7	G	E12 735 382	FUSE	F61	1	1	1	1	T20AL250V
8	G	E12 D69 374	TERMINAL BLOCK	TB1	1	1	1	1	3P
9	G	E12 D70 374	TERMINAL BLOCK	TB2	1	1	1	1	3P
10	G	E17 573 451	INVERTER P.C. BOARD		1				Including heat sink and RT64
	G	E17 574 451	INVERTER P.C. BOARD			1			
	G	E17 575 451	INVERTER P.C. BOARD				1		
	G	E17 576 451	INVERTER P.C. BOARD					1	
⑪	G	E12 784 382	FUSE	F701,F801,F901	1	1	1	1	T3.15AL 250V
⑫	G	E12 661 385	VARISTOR	NR61~NR64	1	1	1	1	

# RoHS PARTS LIST

SUZ-KA25VAR1.TH    SUZ-KA35VAR1.TH  
SUZ-KA25VAHR1.TH    SUZ-KA35VAHR1.TH

## 15-4. OUTDOOR UNIT UNIT STRUCTURAL PARTS AND FUNCTIONAL PARTS



# RoHS PARTS LIST

SUZ-KA25VAR1.TH SUZ-KA35VAR1.TH  
 SUZ-KA25VAHR1.TH SUZ-KA35VAHR1.TH

## 15-4. OUTDOOR UNIT UNIT STRUCTURAL PARTS AND FUNCTIONAL PARTS

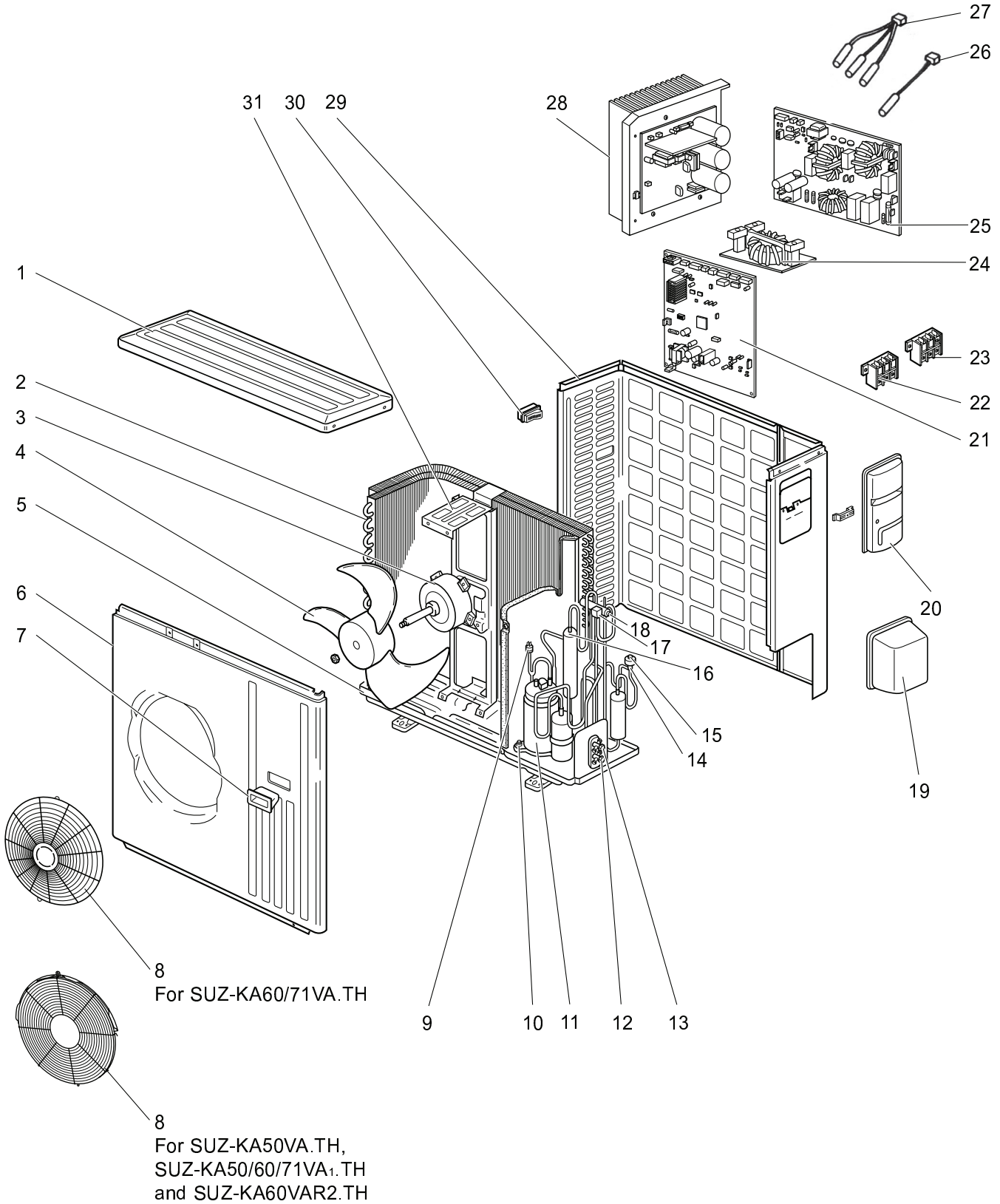
Part numbers that are circled are not shown in the illustration.

No.	RoHS	Part No.	Part Name	Symbol in Wiring Diagram	Q'ty/unit				Remarks
					SUZ-KA-VAR1.TH		SUZ-KA-VAHR1.TH		
					25	35	25	35	
1	G	E12 927 232	CABINET		1	1	1	1	
2	G	E12 927 521	GRILLE		1	1	1	1	
3	G	E12 927 501	PROPELLER		1	1	1	1	
4	G	E12 D69 290	BASE		1	1			
	G	E12 D70 290	BASE				1	1	
5	G	E12 D69 900	COMPRESSOR	MC	1		1		KNB073FFDHC
	G	E12 D70 900	COMPRESSOR	MC		1		1	KNB092FFAHC
6	G	E12 065 506	COMPRESSOR RUBBER SET		3	3	3	3	3 RUBBERS/SET
7	G	E12 D69 661	STOP VALVE (GAS)		1	1	1	1	ø9.52
8	G	E12 D58 662	STOP VALVE (LIQUID)		1	1	1	1	ø6.35
9	G	E12 927 245	SERVICE PANEL		1	1	1	1	
10	G	E12 927 233	BACK PANEL		1	1	1	1	
11	G	E12 927 640	EXPANSION VALVE		1	1	1	1	
12	G	E12 927 493	EXPANSION VALVE COIL	LEV	1	1	1	1	
13	G	E12 D65 961	4-WAY VALVE		1	1	1	1	
14	G	E12 928 079	THERMO HOLDER				1		
	G	E12 930 079	THERMO HOLDER					1	
15	G	E12 928 525	CONDENSER WIRE NET				1		
	G	E12 930 525	CONDENSER WIRE NET					1	
16	G	E12 B83 523	CONDENSER NET		1				
	G	E12 929 523	CONDENSER NET			1			
17	G	E12 928 523	CONDENSER NET				1		
	G	E12 930 523	CONDENSER NET					1	
18	G	E12 D69 293	SEPARATOR		1				
	G	E12 C34 293	SEPARATOR			1			
	G	E12 D77 293	SEPARATOR				1		
	G	E12 C36 293	SEPARATOR					1	
19	G	E12 927 515	MOTOR SUPPORT		1		1		
	G	E12 929 515	MOTOR SUPPORT			1		1	
20	G	E12 927 297	TOP PANEL		1	1	1	1	
21	G	E12 D69 630	OUTDOOR HEAT EXCHANGER		1		1		
	G	E12 D70 630	OUTDOOR HEAT EXCHANGER			1		1	
22	G	E12 D69 301	OUTDOOR FAN MOTOR	MF	1	1	1	1	RC0J50-□□
23	G	E12 C36 526	DEFROST HEATER	H			1	1	
24	G	E12 C36 381	HEATER PROTECTOR	26H			1	1	
②⑤	G	E12 927 937	CAPILLARY TUBE		1	1	1	1	ø3.0 × ø2.0 × 240
②⑥	G	E12 735 936	CAPILLARY TUBE			2		2	ø3.0 × ø1.8 × 600

# RoHS PARTS LIST

SUZ-KA50VA.TH SUZ-KA60VA.TH SUZ-KA71VA.TH  
 SUZ-KA50VA<sub>1</sub>.TH SUZ-KA60VA<sub>1</sub>.TH SUZ-KA71VA<sub>1</sub>.TH  
 SUZ-KA60VAR2.TH

## 15-5. OUTDOOR UNIT STRUCTURAL PARTS, ELECTRICAL PARTS AND FUNCTIONAL PARTS



# RoHS PARTS LIST

Part numbers that are circled are not shown in the illustration.

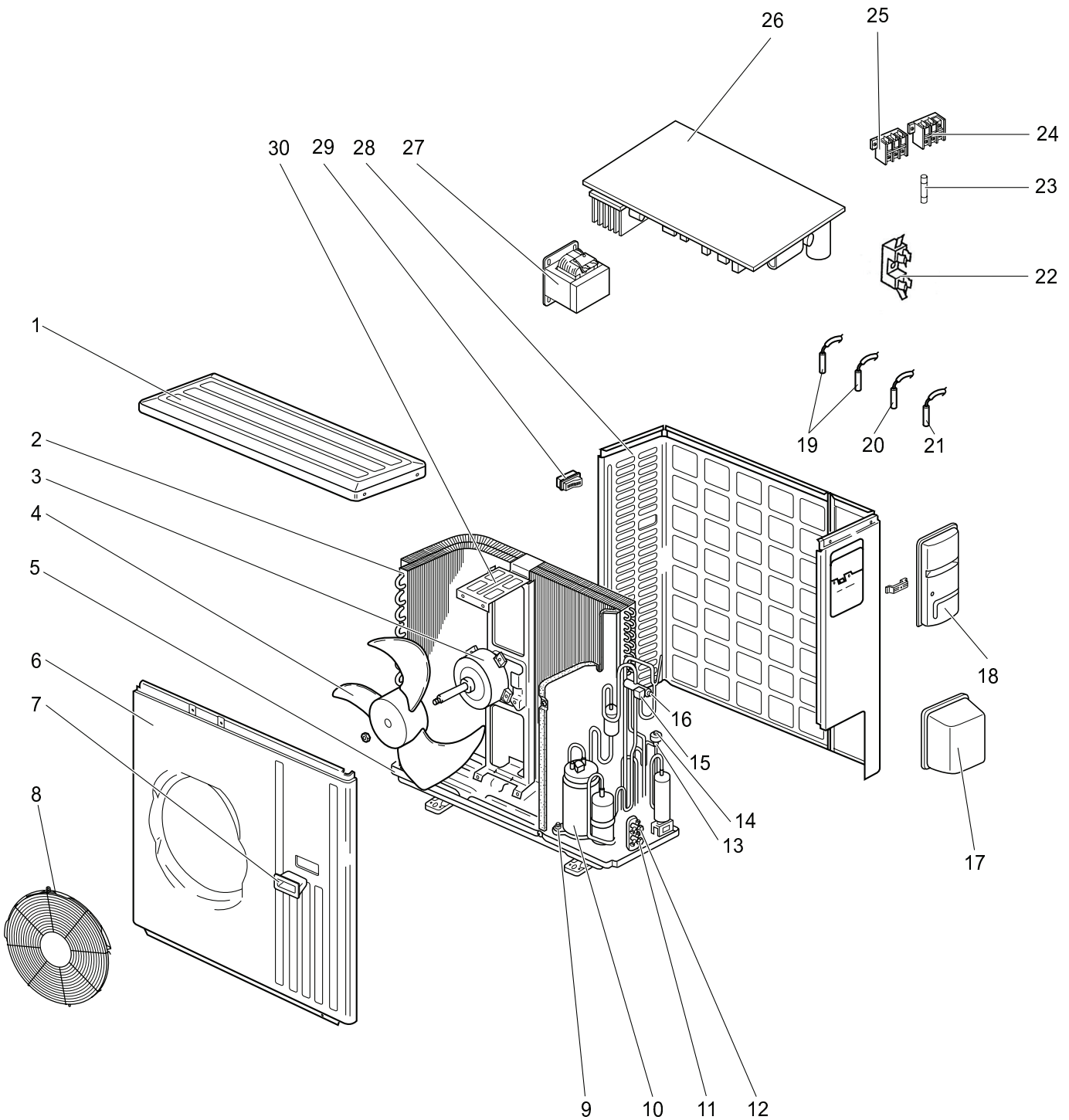
No.	RoHS	Part No.	Part Name	Symbol in Wiring Diagram	Q'ty/unit								Remarks
					SUZ-KA-VA.TH			SUZ-KA-VA1.TH			SUZ-KA- VAR2TH		
					50	60	71	50	60	71	60		
1	G	E 12 819 297	TOP PANEL		1	1	1	1	1	1	1		
2	G	E 12 851 630	OUTDOOR HEAT EXCHANGER		1	1		1	1		1		
	G	E 12 853 630	OUTDOOR HEAT EXCHANGER				1			1			
3	G	E 12 938 301	OUTDOOR FAN MOTOR	MF	1	1	1	1	1	1	1	RCOJ 60- □□	
4	G	E 12 851 501	PROPELLER FAN		1	1	1	1	1	1	1		
5	G	E 12 851 290	BASE		1	1		1	1		1		
	G	E 12 853 290	BASE				1			1			
6	G	E 12 819 232	CABINET		1	1	1	1	1	1	1		
7	G	E 12 819 009	HANDLE		1	1	1	1	1	1	1		
8	G	E 12 819 521	FAN GUARD			1	1						
	G	E 12 D84 521	FAN GUARD		1			1	1	1	1		
9	G	E 12 853 646	HIGH PRESSURE SWTCH	HPS			1			1	1		
10	G	E 12 065 506	COMPRESSOR RUBBER SET		3	3		3	3			3RUBBERS/SET	
	G	E 12 853 506	COMPRESSOR RUBBER SET				3			3		3RUBBERS/SET	
	G	E 12 C34 506	COMPRESSOR RUBBER SET								3	3RUBBERS/SET	
11	G	E 12 939 900	COMPRESSOR	MC	1	1		1	1			SNB130FLDH1	
	G	E 12 853 900	COMPRESSOR	MC			1			1		TNB220FMCHT	
	G	E 12 C37 900	COMPRESSOR	MC							1	SNB130FGBH	
12	G	E 12 851 661	STOP VALVE (GAS)		1			1				φ127	
	G	E 12 819 661	STOP VALVE (GAS)			1	1		1	1	1	φ15.88	
13	G	E 12 821 662	STOP VALVE (LIQUID)		1	1		1	1		1	φ6.35	
	G	E 12 822 662	STOP VALVE (LIQUID)				1			1		φ9.52	
14	G	E 12 851 640	EXPANSION VALVE		1	1		1	1		1		
	G	E 12 853 640	EXPANSION VALVE				1			1			
15	G	E 12 851 493	EXPANSION VALVE COIL	LEV	1	1	1	1	1	1	1		
16	G	E 12 853 299	OIL SEPARATOR				1			1			
17	G	E 12 935 490	R.V. COIL	21S4	1	1	1	1	1	1			
	G	E 12 D02 490	R.V. COIL	21S4							1		
18	G	E 12 891 961	4-WAY VALVE		1	1	1	1	1	1			
	G	E 12 C18 961	4-WAY VALVE								1		
19	G	E 12 819 650	VALVE COVER		1	1	1	1	1	1	1		
20	G	E 12 819 245	SERVICE PANEL		1	1	1	1	1	1	1		
21	G	E 17 170 450	OUTDOOR ELECTRONIC CONTROL P.C. BOARD		1								
	G	E 17 171 450	OUTDOOR ELECTRONIC CONTROL P.C. BOARD			1							
	G	E 17 223 450	OUTDOOR ELECTRONIC CONTROL P.C. BOARD				1						
	G	E 17 313 450	OUTDOOR ELECTRONIC CONTROL P.C. BOARD					1					
	G	E 17 314 450	OUTDOOR ELECTRONIC CONTROL P.C. BOARD						1				
	G	E 17 315 450	OUTDOOR ELECTRONIC CONTROL P.C. BOARD							1			
22	G	E 12 823 375	TERMINAL BLOCK	TB2	1	1	1	1	1	1		3P	
	G	E 12 D69 374	TERMINAL BLOCK	TB2							1	3P	
23	G	E 12 935 374	TERMINAL BLOCK	TB1	1	1	1	1	1	1	1	3P	
24	G	E 12 851 337	REACTOR	L	1	1	1	1	1	1	1		
25	G	E 12 935 444	NOISE FILTER P.C. BOARD		1	1	1	1	1	1	1		
26	G	E 12 935 309	AMBIENT TEMPERATURE THERMSTOR	RT65	1	1	1	1	1	1	1		
27	G	E 12 851 308	THERMSTOR SET	RT61,RT62,RT68	1	1	1	1	1	1	1	DEFROST, DISCHARGE OUTDOOR HEAT EXCHANGER	
28	G	E 12 935 440	POWER BOARD		1	1	1	1	1	1		Including heatsink and RT64	
	G	E 12 B79 440	POWER BOARD								1	Including heatsink and RT64	
29	G	E 12 819 233	BACK PANEL (OUT)		1	1	1	1	1	1			
	G	E 12 D58 233	BACK PANEL (OUT)								1		
30	G	E 12 817 009	HANDLE		1	1	1	1	1	1	1		
31	G	E 12 851 515	MOTOR SUPPORT		1	1	1	1	1	1	1		
32	G	E 12 127 382	FUSE	F 801	1	1	1	1	1	1		250V/3.15A	
	G	E 12 784 382	FUSE	F 801							1	250V/3.15A	
33	G	E 12 737 382	FUSE	F 911	1	1	1	1	1	1		250V/1A	
	G	E 12 B79 382	FUSE	F 911							1	250V/1A	
34	G	E 12 935 385	FUSE & VARISTOR	F64NR64	1	1	1	1	1	1		250V/2A	
	G	E 12 977 385	FUSE & VARISTOR	F64NR64							1	250V/2A	
35	G	E 12 851 936	CAPILLARY TUBE (TAPER PIPE)		1	1		1	1		1	φ3.6xφ2.4x50	
	G	E 12 853 936	CAPILLARY TUBE (TAPER PIPE)			1				1		φ3.6xφ2.4x50	
	G	E 12 861 936	CAPILLARY TUBE				1			1		φ1.8xφ0.6x1000	



# RoHS PARTS LIST

SUZ-KA50VAR2.TH

## 15-6. OUTDOOR UNIT STRUCTURAL PARTS, ELECTRICAL PARTS AND FUNCTIONAL PARTS



# RoHS PARTS LIST

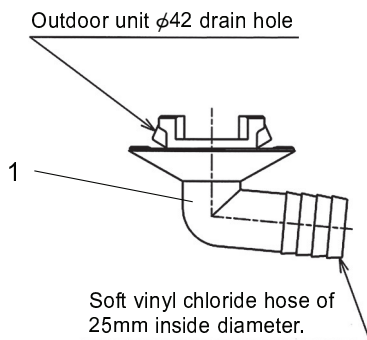
## 15-6. OUTDOOR UNIT STRUCTURAL PARTS, ELECTRICAL PARTS AND FUNCTIONAL PARTS

Part numbers that are circled are not shown in the illustration.

No.	RoHS	Part No.	Part Name	Symbol in Wiring Diagram	Q'ty/unit	Remarks
					SUZ-KA50VAR2.TH	
1	G	E12 819 297	TOP PANEL		1	
2	G	E12 851 630	OUTDOOR HEAT EXCHANGER		1	
3	G	E12 938 301	OUTDOOR FAN MOTOR	MF	1	RC0J60-□□
4	G	E12 851 501	PROPELLER FAN		1	
5	G	E12 851 290	BASE		1	
6	G	E12 819 232	CABINET		1	
7	G	E12 819 009	HANDLE		1	
8	G	E12 D84 521	FAN GUARD		1	
9	G	E12 C34 506	COMPRESSOR RUBBER SET		3	3 RUBBERS/SET
10	G	E12 C37 900	COMPRESSOR	MC	1	SNB130FGBH
11	G	E12 D58 661	STOP VALVE (GAS)		1	∅12.7
12	G	E12 D58 662	STOP VALVE (LIQUID)		1	∅6.35
13	G	E12 851 640	EXPANSION VALVE		1	
14	G	E12 D58 493	EXPANSION VALVE COIL	LEV	1	
15	G	E12 D58 490	R.V. COIL	21S4	1	
16	G	E12 C18 961	4-WAY VALVE		1	
17	G	E12 819 650	VALVE COVER		1	
18	G	E12 819 245	SERVICE PANEL		1	
19	G	E12 D58 306	THERMISTOR SET	RT61,RT62	1	DEFROST, DISCHARGE
20	G	E12 D58 309	AMBIENT TEMPERATURE THERMISTOR	RT65	1	
21	G	E12 C34 307	OUTDOOR HEAT EXCHANGER TEMPERATURE THERMISTOR	RT68	1	
22	G	E12 735 241	FUSE HOLDER		1	
23	G	E12 735 382	FUSE	F61	1	T20AL250V
24	G	E12 927 374	TERMINAL BLOCK	TB1	1	3 P
25	G	E12 D69 374	TERMINAL BLOCK	TB2	1	3 P
26	G	E12 524 451	INVERTER P.C. BOARD		1	Including heatsink and RT64
27	G	E12 D58 337	REACTOR	L61	1	
28	G	E12 D58 233	BACK PANEL (OUT)		1	
29	G	E12 817 009	HANDLE		1	
30	G	E12 851 515	MOTOR SUPPORT		1	
③1	G	E12 851 936	CAPILLARY TUBE (TAPER PIPE)		1	∅3.6 × ∅2.4 × 50
③2	G	E12 784 382	FUSE	F801	1	T3.15AL250V
③3	G	E12 661 385	VARISTOR	NR61-64	1	

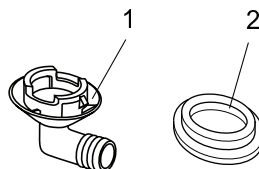
# RoHS PARTS LIST

SUZ-KA25VA.TH SUZ-KA35VA.TH SUZ-KA25VAR1.TH SUZ-KA35VAR1.TH  
 SUZ-KA25VAH.TH SUZ-KA35VAH.TH SUZ-KA25VAHR1.TH SUZ-KA35VAHR1.TH  
**15-8. DRAIN SOCKET**



No.	RoHS	Parts No.	Parts Name	Symbol in Wiring Diagram	Q'ty/unit				Remarks
					SUZ-KA				
					25VA.TH 25VAR1.TH	25VAH.TH 25VAHR1.TH	35VA.TH 35VAR1.TH	35VAH.TH 35VAHR1.TH	
1	G	E12 838 704	DRAIN SOCKET		1		1		

SUZ-KA50VA.TH SUZ-KA50VA<sub>1</sub>.TH SUZ-KA50VAR2.TH  
 SUZ-KA60VA.TH SUZ-KA60VA<sub>1</sub>.TH SUZ-KA60VAR2.TH  
 SUZ-KA71VA.TH SUZ-KA71VA<sub>1</sub>.TH  
**15-9. ACCESSORY**



No.	RoHS	Part No.	Part Name	Symbol in Wiring Diagram	Q'ty/unit			Remarks
					SUZ-KA50/60		SUZ-KA71	
					VA <sub>(0)</sub> .TH VAR2TH	VAR2TH	VA <sub>(0)</sub> .TH	
1	G	E12 817 704	DRAIN SOCKET		1	1	1	
2	G	E12 444 705	DRAIN CAP		2	2	2	φ33, 2PCS/SET

## MITSUBISHI ELECTRIC CORPORATION

HEAD OFFICE: TOKYO BLDG., 2-7-3, MARUNOUCHI, CHIYODA-KU, TOKYO100-8310, JAPAN

©Copyright 2005 MITSUBISHI ELECTRIC CORPORATION  
 Distributed in May 2012 No.OC322 REVISED EDITION-H  
 Distributed in Aug. 2011 No.OC322 REVISED EDITION-G  
 Distributed in Oct. 2009 No.OC322 REVISED EDITION-F PDF 6  
 Distributed in Apr. 2009 No.OC322 REVISED EDITION-E PDF 6  
 Distributed in Nov. 2008 No.OC322 REVISED EDITION-D PDF 6  
 Distributed in Mar. 2007 No.OC322 REVISED EDITION-C PDF 7  
 Distributed in Oct. 2006 No.OC322 REVISED EDITION-B PDF 7  
 Distributed in Oct. 2005 No.OC322 REVISED EDITION-A PDF 8  
 Distributed in Apr. 2005 No.OC322 PDF 8  
 Made in Japan

New publication, effective May 2012  
 Specifications are subject to change without notice.