

SERVICE MANUAL

R410A

Outdoor unit

[model names]

[Service Ref.]

PUHZ-P100VHA
**PUHZ-P100VHA.UK
PUHZ-P100VHA₁.UK**
PUHZ-P125VHA
**PUHZ-P125VHA.UK
PUHZ-P125VHA₁.UK**
PUHZ-P140VHA
**PUHZ-P140VHA.UK
PUHZ-P140VHA₁.UK**

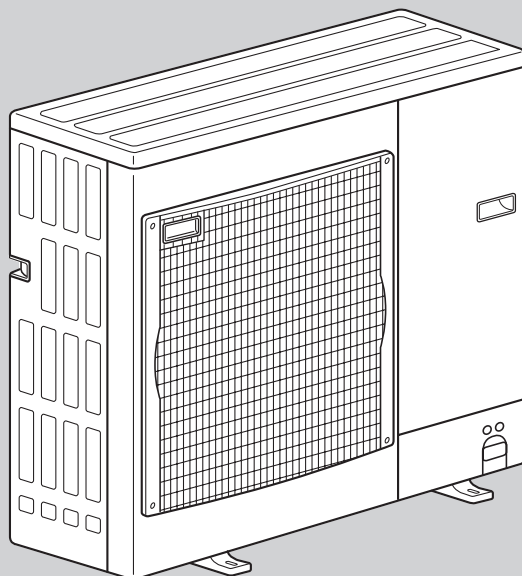
Revision:

- PUHZ-P100/125/140VHA₁.UK are added in REVISED EDITION-B.
- Some descriptions have been modified.

- Please void OC359 REVISED EDITION-A.

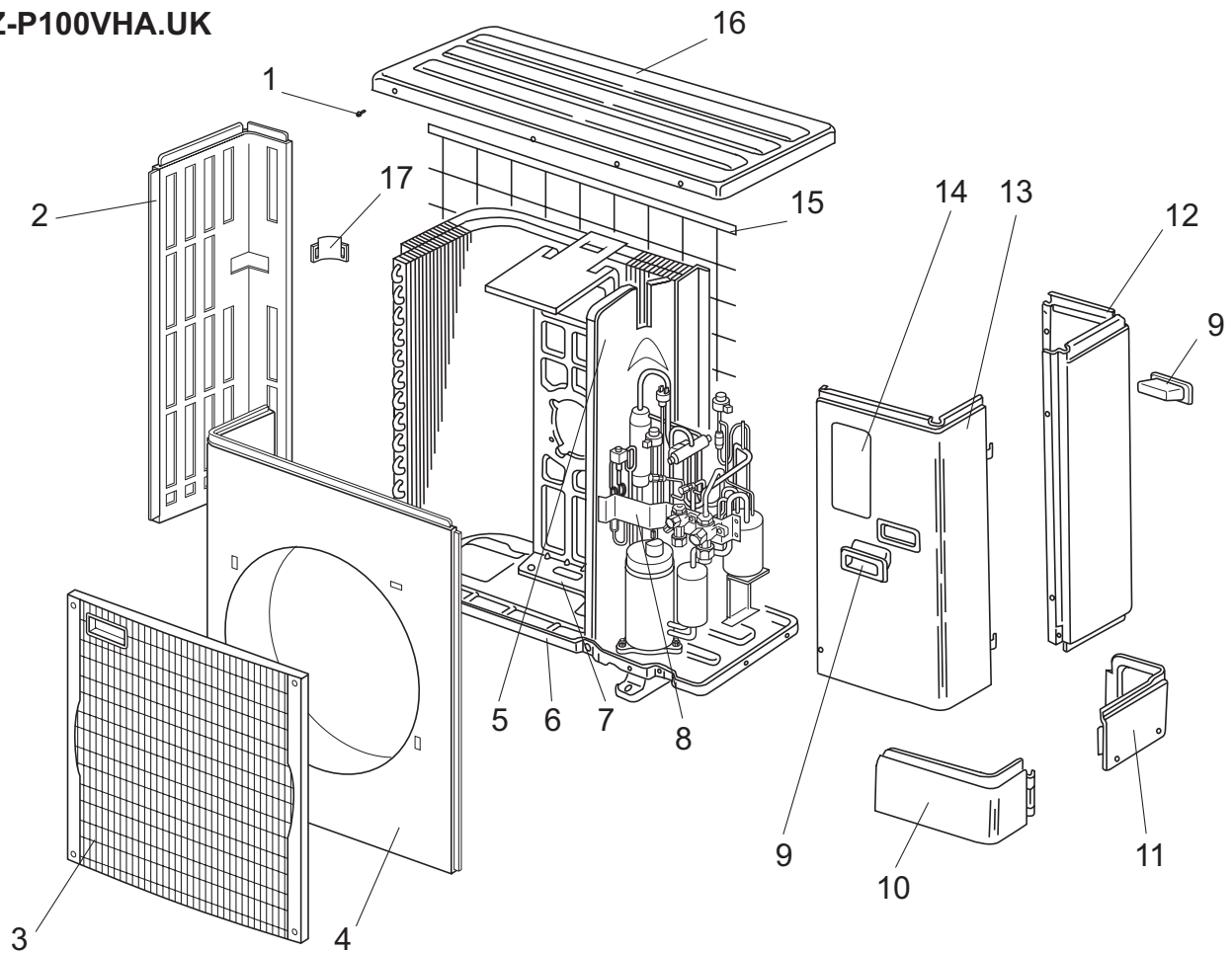
Note:

- This manual describes only service data of the outdoor units.
- RoHS compliant products have <G> mark on the spec name plate.
- For servicing of RoHS compliant products, refer to the RoHS Parts List.


**PUHZ-P100VHA.UK
PUHZ-P100VHA₁.UK**

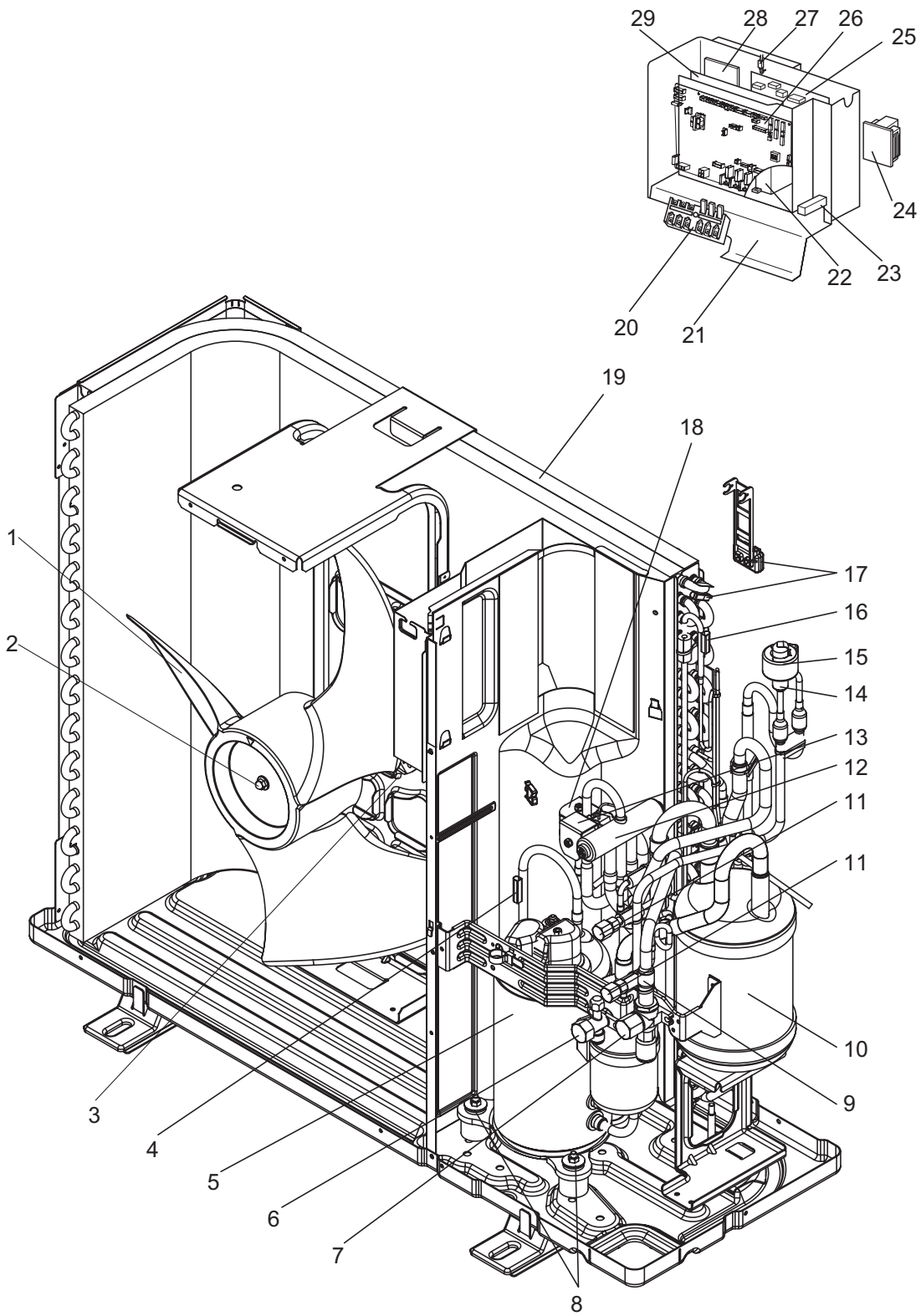
CONTENTS

1. TECHNICAL CHANGES	2
2. REFERENCE MANUAL	2
3. SAFETY PRECAUTION	3
4. FEATURES	6
5. SPECIFICATIONS	7
6. DATA	8
7. OUTLINES AND DIMENSIONS	11
8. WIRING DIAGRAM	13
9. WIRING SPECIFICATIONS	15
10. REFRIGERANT SYSTEM DIAGRAM	20
11. TROUBLESHOOTING	22
12. FUNCTION SETTING	72
13. EASY MAINTENANCE FUNCTION	78
14. MONITORING THE OPERATION DATA BY THE REMOTE CONTROLLER	81
15. DISASSEMBLY PROCEDURE	91
16. PARTS LIST	101
17. RoHS PARTS LIST	107

STRUCTURAL PARTS
PUHZ-P100VHA.UK


No.	Part No.	Part Name	Specification	Q'ty/set	Remarks (Drawing No.)	Wiring Diagram Symbol	Recom- mended Q'ty	Price	
				PUHZ-P 100 VHA.UK				Unit	Amount
1	—	F.ST SCREW	(5X10)	31	(DG12F536H10)				
2	S70 E10 662	SIDE PANEL (L)		1					
3	S70 E20 675	FAN GRILLE		1					
4	S70 E10 668	FRONT PANEL		1					
5	—	SEPARATOR		1	(BK00C456G03)				
6	S70 E10 686	BASE ASSY		1					
7	S70 E10 130	MOTOR SUPPORT		1					
8	—	VALVE BED ASSY		1	(BK00C493G01)				
9	S70 30L 655	HANDLE		2					
10	S70 E10 658	COVER PANEL (FRONT)		1					
11	S70 E20 658	COVER PANEL (REAR)		1					
12	S70 E30 662	SIDE PANEL (R)		1					
13	S70 E30 661	SERVICE PANEL		1					
14	S70 E10 699	LABEL		1					
15	S70 E10 698	REAR GUARD		1					
16	S70 E10 641	TOP PANEL		1					
17	S70 E10 655	HANDLE		1					

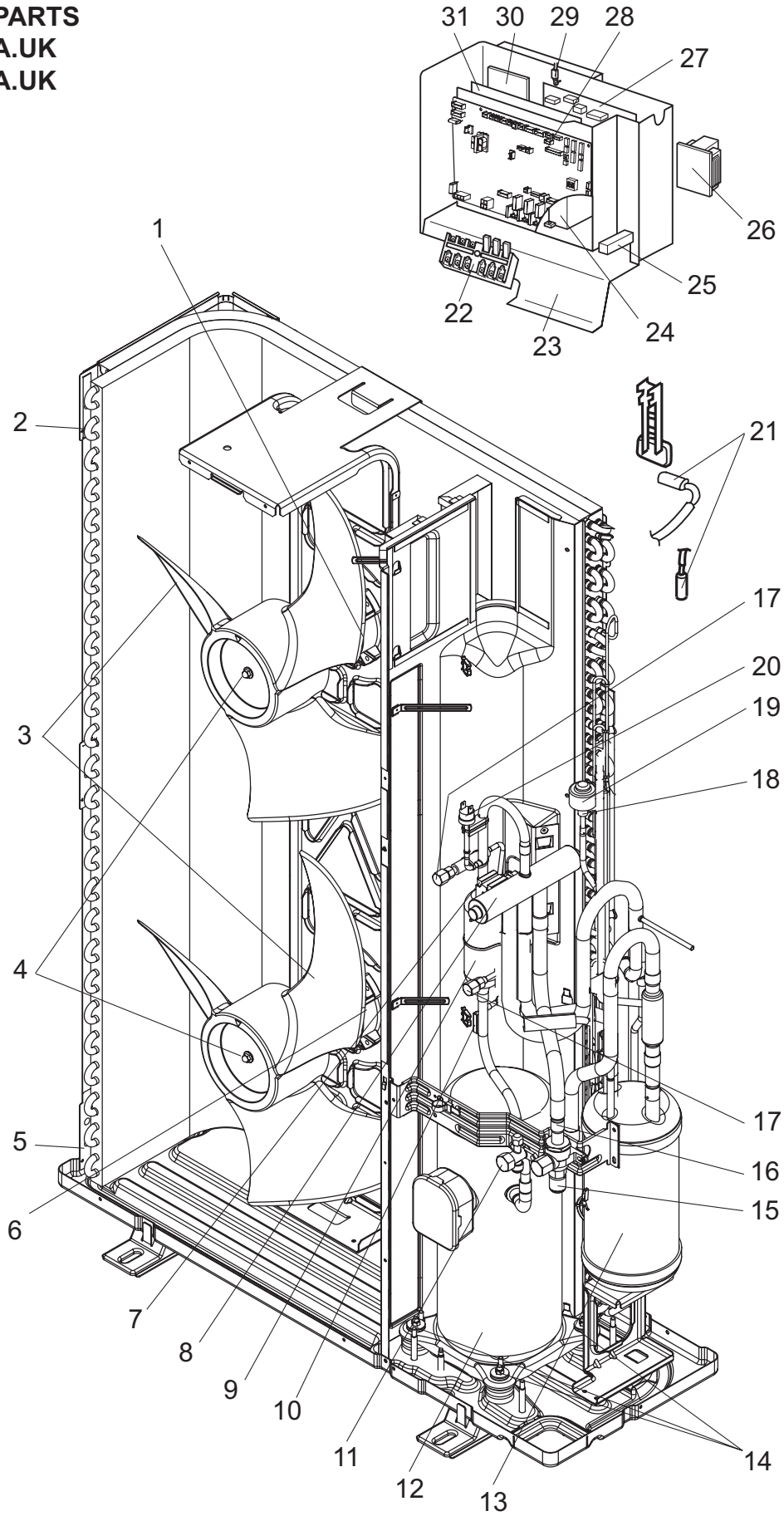
FUNCTIONAL PARTS
PUHZ-P100VHA.UK



Part numbers that are circled are not shown in the figures.

No.	Part No.	Part Name	Specification	Q'ty/set	Remarks (Drawing No.)	Wiring Diagram Symbol	Recom- mended Q'ty	Price	
				PUHZ-P				Unit	Amount
				100 VHA.UK					
1	S70 K04 115	PROPELLER FAN		1					
2	S70 K01 097	NUT		1					
3	S70 E10 763	FAN MOTOR		1		MF1			
4	S70 E33 202	THERMISTOR (DISCHARGE)		1		TH4			
5	S70 E22 400	COMPRESSOR	TNB220FLDM	1		MC			
6	S70 500 418	STOP VALVE	3/8	1					
7	S70 E06 411	BALL VALVE	5/8	1					
8	S70 E01 004	RUBBER MOUNT		3					
9	S70 36L 450	STRAINER	#50	1					
10	S70 E50 440	ACCUMULATOR		1					
11	S70 E02 413	CHARGE PLUG		2					
12	S70 E04 403	FOUR-WAY VALVE		1					
13	S70 E01 242	SOLENOID VALVE COIL <FOUR-WAY VALVE>		1		21S4			
14	S70 E80 401	EXPANSION VALVE		1					
15	S70 E81 402	LINEAR EXPANSION VALVE COIL		1		LEV(A)			
16	S70 E32 202	THERMISTOR (OUTDOOR PIPE)		1		TH3			
17	S70 E31 202	THERMISTOR (OUTDOOR 2-PHASE PIPE, OUTDOOR)		1		TH6,7			
18	S70 E02 242	SOLENOID VALVE COIL <BYPASS VALVE>		1		SV			
19	S70 E50 408	HEAT EXCHANGER		1					
20	S70 E05 716	TERMINAL BLOCK	6P(L,N,⊕,S1,S2,S3)	1		TB1			
21	S70 E40 316	CONTROL BOX ASSY		1					
22	S70 410 708	CONTACTOR		1		52C			
23	S70 E10 234	RESISTOR		1		RS			
24	S70 K20 259	REACTOR		1		DCL			
25	S70 E10 313	POWER CIRCUIT BOARD		1		P.B.			
26	S70 H00 315	CONTROLLER CIRCUIT BOARD		1		C.B.			
27	S70 E30 202	THERMISTOR (HEAT SINK)		1		TH8			
28	S70 E10 233	ACTIVE FILTER MODULE		1		ACTM			
29	S70 E15 346	NOISE FILTER CIRCUIT BOARD		1		N.F.			
30	S70 E10 208	HIGH PRESSURE SWITCH		1		63H			
31	S70 42H 467	MUFFLER		1					
32	S70 E05 255	MAIN SMOOTHING CAPACITOR		1		CB			
33	S70 282 403	SOLENOID VALVE (BYPASS VALVE)		1					

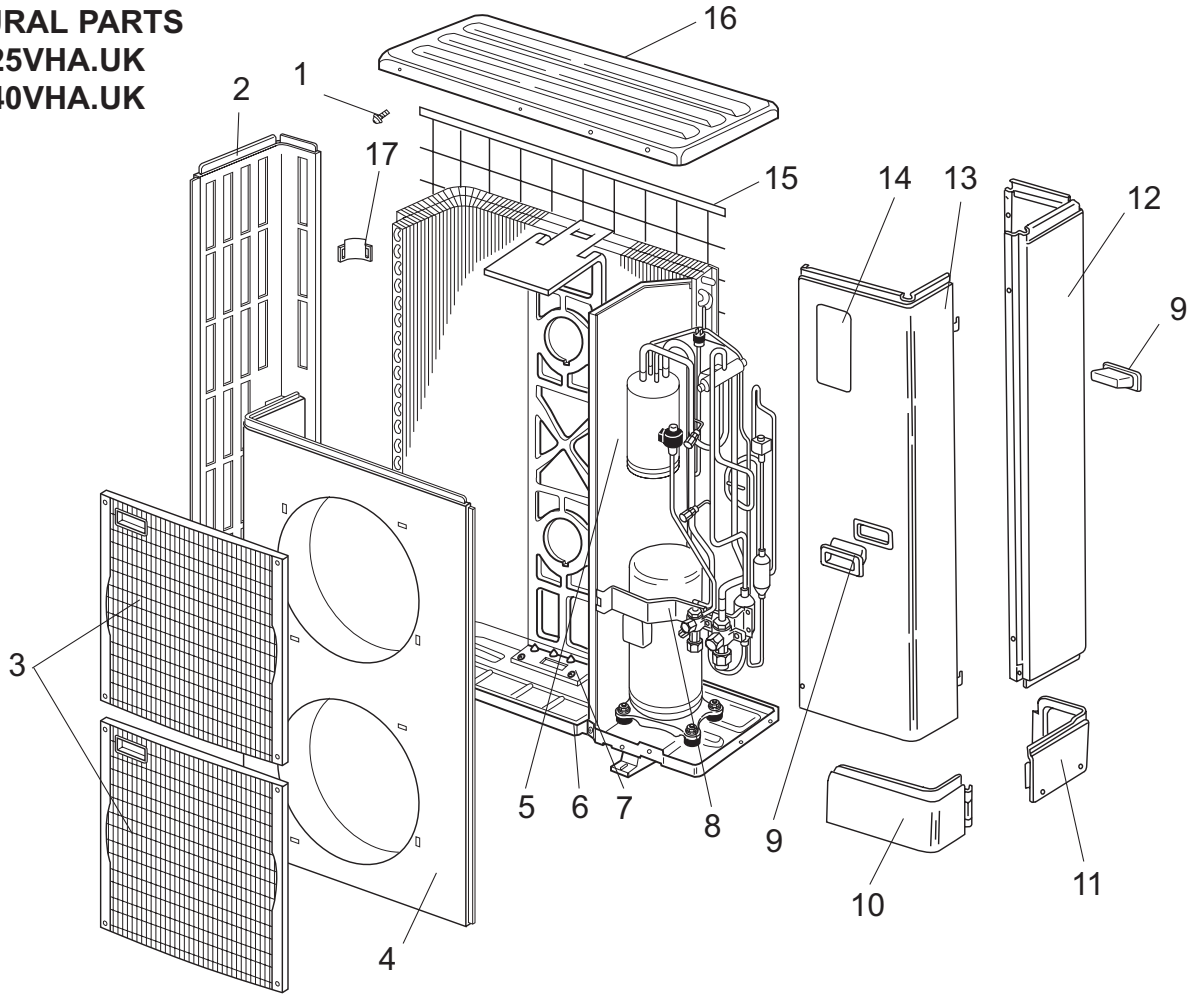
FUNCTIONAL PARTS
PUHZ-P125VHA.UK
PUHZ-P140VHA.UK



Part numbers that are circled are not shown in the figures.

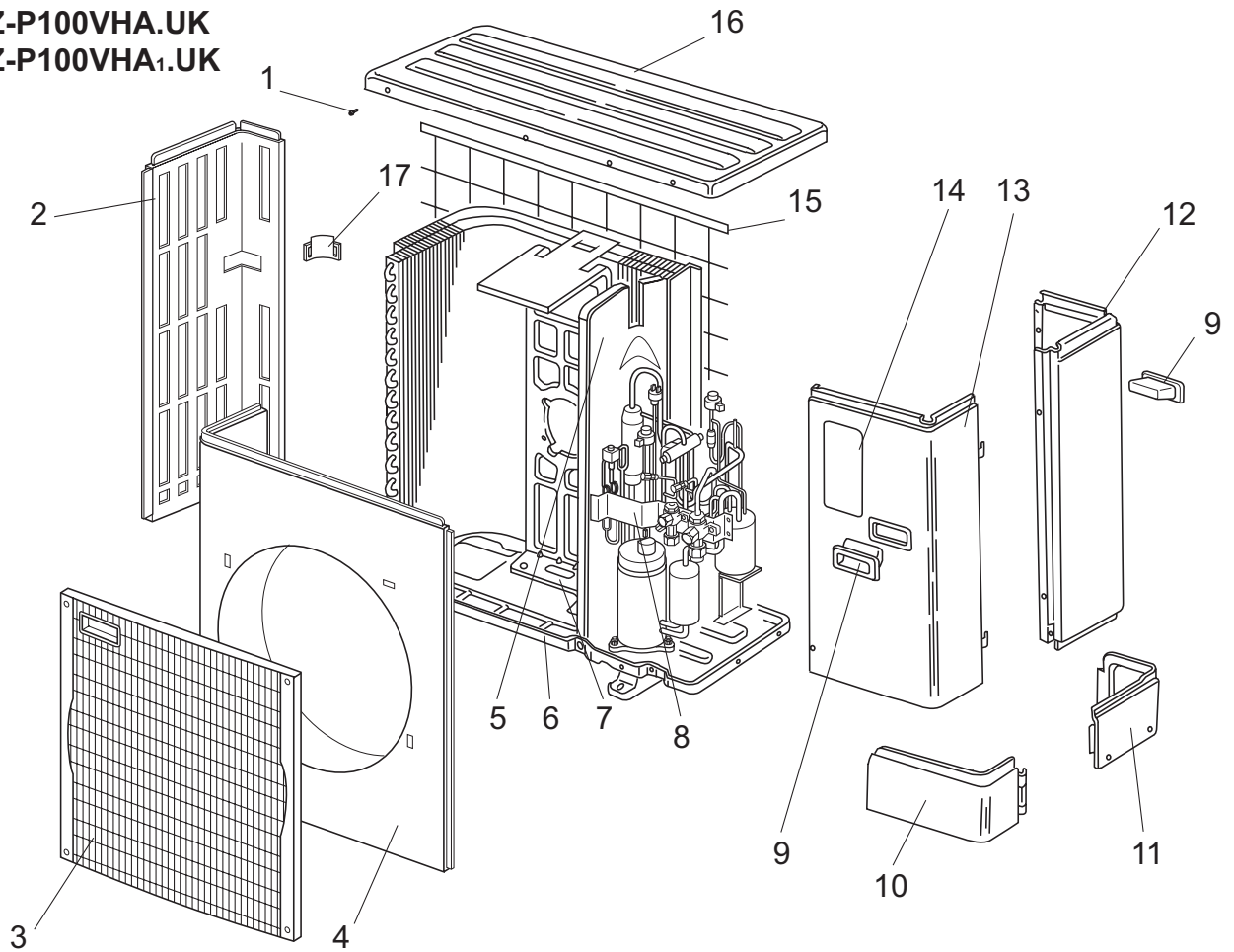
No.	Part No.	Part Name	Specification	Q'ty/set		Remarks (Drawing No.)	Wiring Diagram Symbol	Recom- mended Q'ty	Price	
				PUHZ-P					Unit	Amount
				125	140					
				VHA.UK						
1	S70 E10 763	FAN MOTOR		1	1		MF1			
2	S70 E60 408	HEAT EXCHANGER (TOP)		1	1					
3	S70 K04 115	PROPELLER FAN		2	2					
4	S70 K01 097	NUT		2	2					
5	S70 E70 408	HEAT EXCHANGER (UNDER)		1	1					
6	S70 E20 763	FAN MOTOR		1	1		MF2			
7	S70 350 242	SOLENOID COIL <FOUR-WAY VALVE>		1	1		21S4			
8	S70 E03 403	FOUR-WAY VALVE		1	1					
9	S70 42H 467	MUFFLER		1	1					
10	S70 E34 202	THERMISTOR (DISCHARGE)		1	1		TH4			
11	S70 500 418	STOP VALVE	3/8	1	1					
12	S70 E33 400	COMPRESSOR	ANV33FDDMT	1	1		MC			
13	S70 E60 440	ACCUMULATOR		1	1					
14	S70 E02 004	RUBBER MOUNT		4	4					
15	S70 E06 411	BALL VALVE	5/8	1	1					
16	S70 36L 450	STRAINER	#50	1	1					
17	S70 E02 413	CHARGE PLUG		2	2					
18	S70 E90 401	EXPANSION VALVE		1	1					
19	S70 E81 402	LINEAR EXPANSION VALVE COIL		1	1		LEV(A)			
20	S70 E10 208	HIGH PRESSURE SWITCH		1	1		63H			
21	S70 E31 202	THERMISTOR (OUTDOOR 2-PHASE PIPE, OUTDOOR)		1	1		TH6,7			
22	S70 E05 716	TERMINAL BLOCK	6P(L,N,⊕,S1,S2,S3)	1	1		TB1			
23	S70 E50 316	CONTROL BOX ASSY		1						
	S70 E60 316	CONTROL BOX ASSY			1					
24	S70 410 708	CONTACTOR		1	1		52C			
25	S70 E10 234	RESISTOR		1	1		RS			
26	S70 K20 259	REACTOR		1	1		DCL			
27	S70 E11 313	POWER CIRCUIT BOARD		1	1		P.B.			
28	S70 H00 315	CONTROLLER CIRCUIT BOARD		1	1		C.B.			
29	S70 E30 202	THERMISTOR (HEAT SINK)		1	1		TH8			
30	S70 E10 233	ACTIVE FILTER MODULE		1	1		ACTM			
31	S70 E15 346	NOISE FILTER CIRCUIT BOARD		1	1		N.F.			
32	S70 E35 202	THERMISTOR (OUTDOOR PIPE)		1	1		TH3			
33	S70 E05 255	MAIN SMOOTHING CAPACITOR		1	1		CB			

STRUCTURAL PARTS
PUHZ-P125VHA.UK
PUHZ-P140VHA.UK



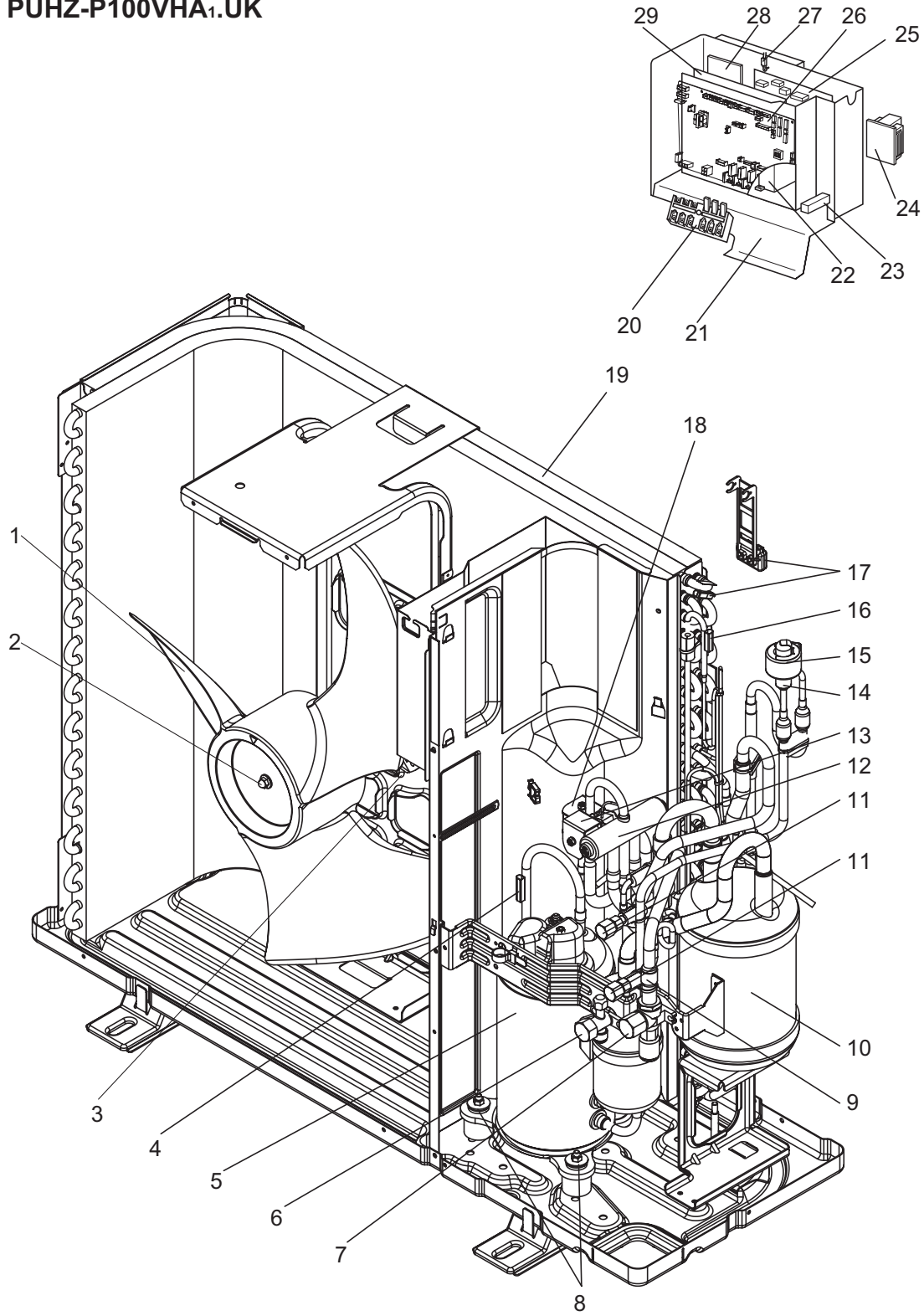
No.	Part No.	Part Name	Specification	Q'ty/set	Remarks (Drawing No.)	Wiring Diagram Symbol	Recom- mended Q'ty	Price	
				PUHZ-P 125, 140 VHA.UK				Unit	Amount
1	—	F.ST SCREW	(5X10)	46	(DG12F536H10)				
2	S70 E20 662	SIDE PANEL (L)		1					
3	S70 E20 675	FAN GRILLE		2					
4	S70 E20 668	FRONT PANEL		1					
5	—	SEPARATOR		1	(BK00C456G02)				
6	S70 E20 686	BASE ASSY		1					
7	S70 E20 130	MOTOR SUPPORT		1					
8	—	VALVE BED ASSY		1	(BK00C493G01)				
9	S70 30L 655	HANDLE		2					
10	S70 E10 658	COVER PANEL (FRONT)		1					
11	S70 E20 658	COVER PANEL (REAR)		1					
12	S70 E40 662	SIDE PANEL (R)		1					
13	S70 E40 661	SERVICE PANEL		1					
14	S70 E10 699	LABEL		1					
15	S70 E20 698	REAR GUARD		2					
16	S70 E10 641	TOP PANEL		1					
17	S70 E10 655	HANDLE		1					

STRUCTURAL PARTS
PUHZ-P100VHA.UK
PUHZ-P100VHA1.UK



No.	RoHS	Part No.	Part Name	Specification	Q.ty/set	Remarks (Drawing No.)	Wiring Diagram Symbol	Recom- mended Q'ty	Price	
					PUHZ-P 100 VHA ⁽¹⁾ .UK				Unit	Amount
1	G	—	F.ST SCREW	(5X10)	31	(DG12F536H10)				
2	G	S70 E10 662	SIDE PANEL (L)		1					
3	G	S70 E20 675	FAN GRILLE		1					
4	G	S70 E10 668	FRONT PANEL		1					
5	G	—	SEPARATOR		1	(BK00C456G03)				
6	G	S70 E10 686	BASE ASSY		1					
7	G	S70 E10 130	MOTOR SUPPORT		1					
8	G	—	VALVE BED ASSY		1	(BK00C493G01)				
9	G	S70 30L 655	HANDLE		2					
10	G	S70 E10 658	COVER PANEL (FRONT)		1					
11	G	S70 E20 658	COVER PANEL (REAR)		1					
12	G	S70 E30 662	SIDE PANEL (R)		1					
13	G	S70 E30 661	SERVICE PANEL		1					
14	G	S70 E10 699	LABEL		1					
15	G	S70 E10 698	REAR GUARD		1					
16	G	S70 E10 641	TOP PANEL		1					
17	G	S70 E10 655	HANDLE		1					

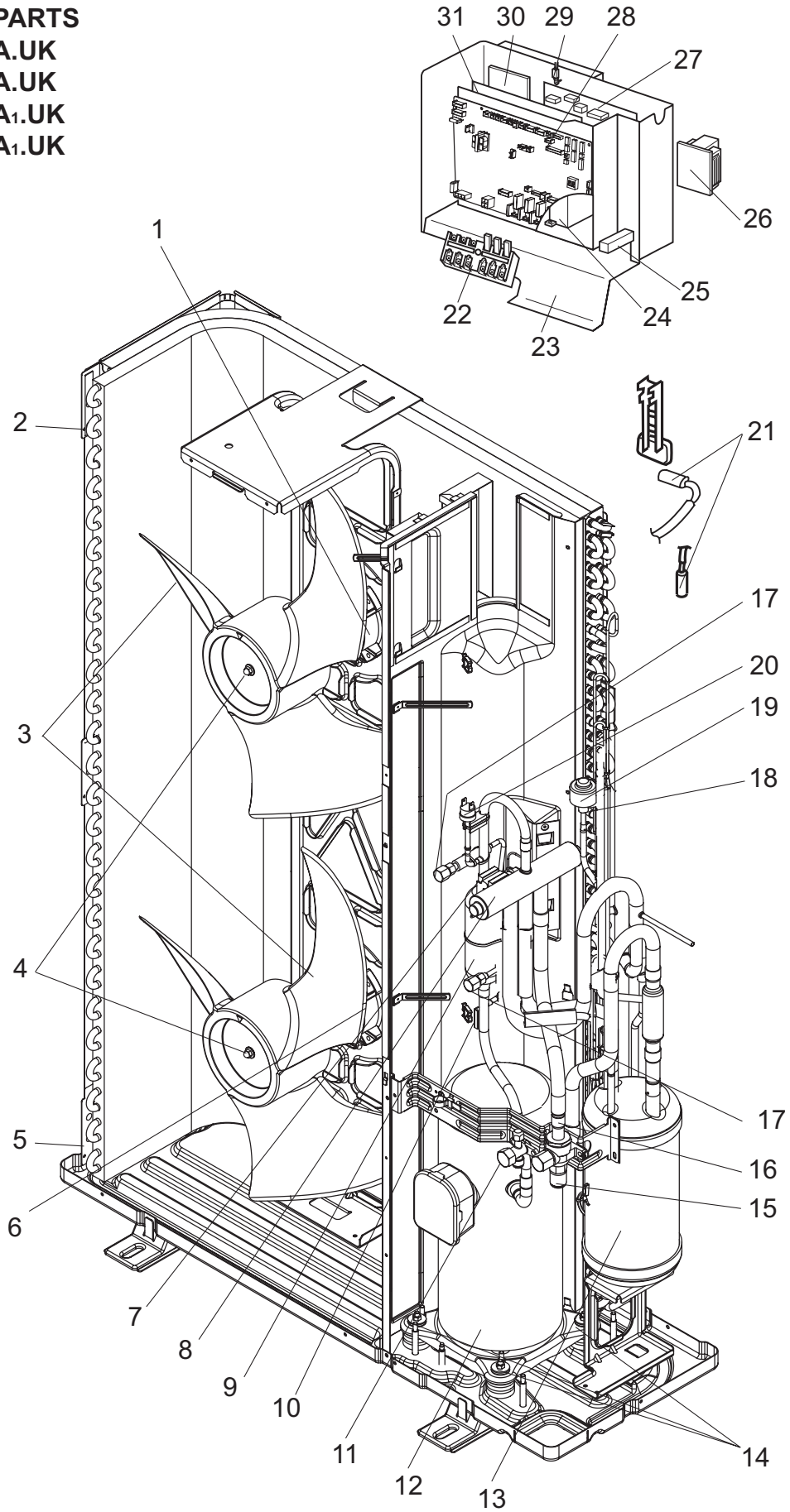
FUNCTIONAL PARTS
PUHZ-P100VHA.UK
PUHZ-P100VHA1.UK



Part numbers that are circled are not shown in the figures.

No.	Rohs	Part No.	Part Name	Specification	Q,ty/set		Remarks (Drawing No.)	Wiring Diagram Symbol	Recom- mended Q'ty	Price	
					PUHZ-P100					Unit	Amount
					VHA.UK	VHA1.UK					
1	G	S70 K04 115	PROPELLER FAN		1	1					
2	G	S70 K01 097	NUT		1	1					
3	G	S70 E10 763	FAN MOTOR		1	1		MF1			
4	G	S70 E33 202	THERMISTOR (DISCHARGE)		1	1		TH4			
5	G	S70 E22 400	COMPRESSOR	TNB220FLDM	1	1		MC			
6	G	S70 500 418	STOP VALVE	3/8	1	1					
7	G	S70 E06 411	BALL VALVE	5/8	1	1					
8	G	S70 E01 004	RUBBER MOUNT		3	3					
9	G	S70 36L 450	STRAINER	#50	1	1					
10	G	S70 E50 440	ACCUMULATOR		1	1					
11	G	S70 E02 413	CHARGE PLUG		2	2					
12	G	S70 E04 403	FOUR-WAY VALVE		1	1					
13	G	S70 E01 242	SOLENOID VALVE COIL <FOUR-WAY VALVE>		1	1		21S4			
14	G	S70 E80 401	EXPANSION VALVE		1	1					
15	G	S70 E81 402	LINEAR EXPANSION VALVE COIL		1	1		LEV(A)			
16	G	S70 E32 202	THERMISTOR (OUTDOOR PIPE)		1	1		TH3			
17	G	S70 E31 202	THERMISTOR (OUTDOOR 2-PHASE PIPE, OUTDOOR)		1	1		TH6,7			
18	G	S70 E02 242	SOLENOID VALVE COIL <BYPASS VALVE>		1	1		SV			
19	G	S70 E50 408	HEAT EXCHANGER		1	1					
20	G	S70 E05 716	TERMINAL BLOCK	6P(L,N,⓪,S1,S2,S3)	1	1		TB1			
21	G	S70 E40 316	CONTROL BOX ASSY		1						
	G	S70 E70 316	CONTROL BOX ASSY			1					
22	G	S70 410 708	CONTACTOR		1			52C			
23	G	S70 E10 234	RESISTOR		1			RS			
24	G	S70 K20 259	REACTOR		1	1		DCL			
25	G	S70 E10 313	POWER CIRCUIT BOARD		1	1		P.B.			
26	G	S70 H00 315	CONTROLLER CIRCUIT BOARD		1	1		C.B.			
27	G	S70 E30 202	THERMISTOR (HEAT SINK)		1	1		TH8			
28	G	S70 E10 233	ACTIVE FILTER MODULE		1			ACTM			
	G	S70 E20 233	ACTIVE FILTER MODULE			1		ACTM			
29	G	S70 E15 346	NOISE FILTER CIRCUIT BOARD		1			N.F.			
	G	S70 E20 346	NOISE FILTER CIRCUIT BOARD			1		N.F.			
30	G	S70 E10 208	HIGH PRESSURE SWITCH		1	1		63H			
31	G	S70 42H 467	MUFFLER		1	1					
32	G	S70 E05 255	MAIN SMOOTHING CAPACITOR		1	1		CB			
33	G	S70 282 403	SOLENOID VALVE (BYPASS VALVE)		1	1					

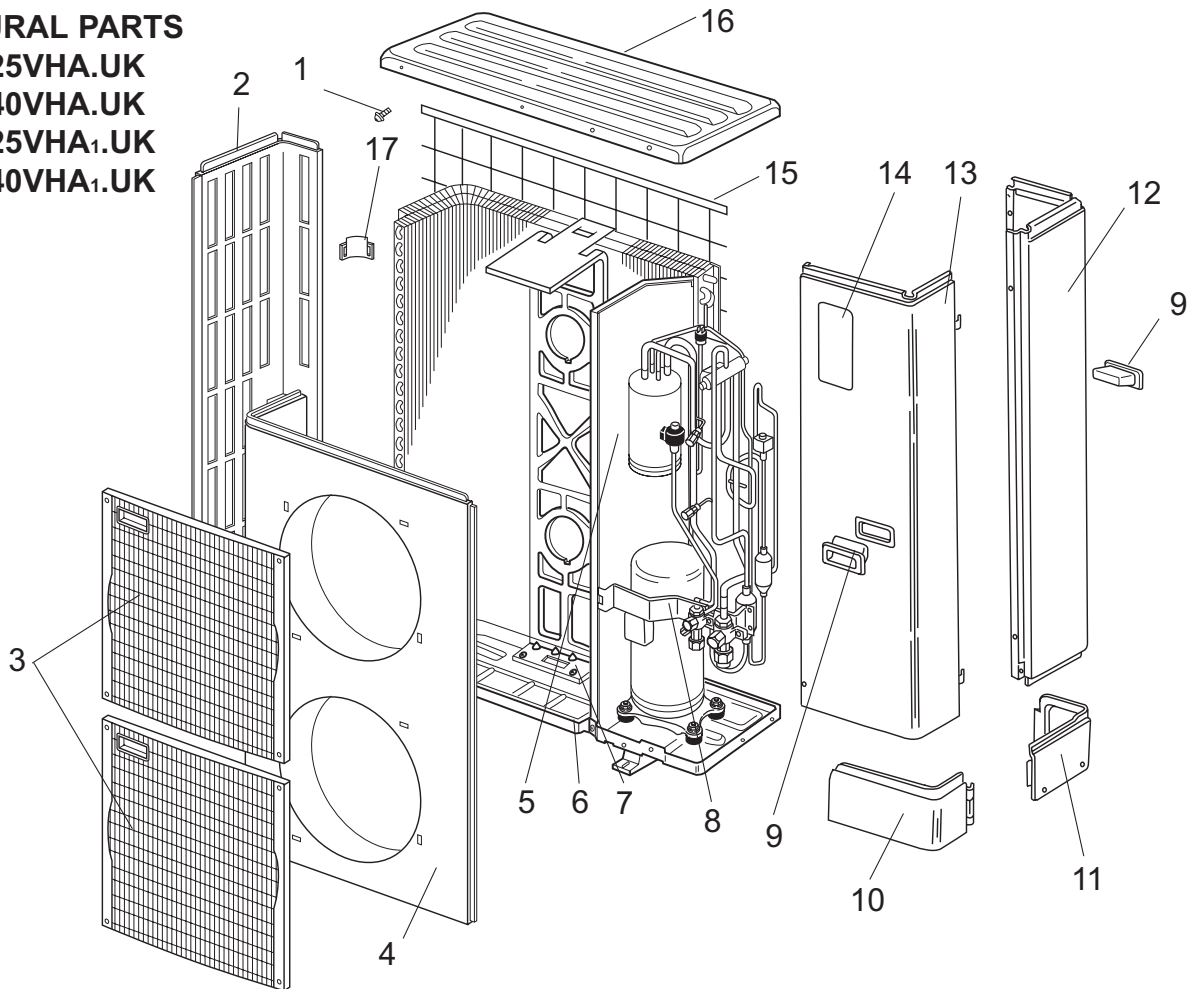
FUNCTIONAL PARTS
PUHZ-P125VHA.UK
PUHZ-P140VHA.UK
PUHZ-P125VHA1.UK
PUHZ-P140VHA1.UK



Part numbers that are circled are not shown in the figures.

No.	RoHS	Part No.	Part Name	Specification	Q'ty/set				Remarks (Drawing No.)	Wiring Diagram Symbol	Recom- mended Q'ty	Price	
					PUHZ-P							Unit	Amount
					125		140						
					VHA.UK	VHA:UK	VHA.UK	VHA:UK					
1	G	S70 E10 763	FAN MOTOR		1	1	1	1		MF1			
2	G	S70 E60 408	HEAT EXCHANGER(TOP)		1	1	1	1					
3	G	S70 K04 115	PROPELLER FAN		2	2	2	2					
4	G	S70 K01 097	NUT		2	2	2	2					
5	G	S70 E70 408	HEAT EXCHANGER(UNDER)		1	1	1	1					
6	G	S70 E20 763	FAN MOTOR		1	1	1	1		MF2			
7	G	S70 350 242	SOLENOID COIL <FOUR-WAY VALVE>		1	1	1	1		21S4			
8	G	S70 E03 403	FOUR-WAY VALVE		1	1	1	1					
9	G	S70 42H 467	MUFFLER		1	1	1	1					
10	G	S70 E34 202	THERMISTOR (DISCHARGE)		1	1	1	1		TH4			
11	G	S70 500 418	STOP VALVE	3/8	1	1	1	1					
12	G	S70 E33 400	COMPRESSOR	ANV33FDDMT	1	1	1	1		MC			
13	G	S70 E60 440	ACCUMULATOR		1	1	1	1					
14	G	S70 E02 004	RUBBER MOUNT		4	4	4	4					
15	G	S70 E06 411	BALL VALVE	5/8	1	1	1	1					
16	G	S70 36L 450	STRAINER	#50	1	1	1	1					
17	G	S70 E02 413	CHARGE PLUG		2	2	2	2					
18	G	S70 E90 401	EXPANSION VALVE		1	1	1	1					
19	G	S70 E81 402	LINEAR EXPANSION VALVE COIL		1	1	1	1		LEV(A)			
20	G	S70 E10 208	HIGH PRESSURE SWITCH		1	1	1	1		63H			
21	G	S70 E31 202	THERMISTOR (OUTDOOR 2-PHASE PIPE, OUTDOOR)		1	1	1	1		TH6,7			
22	G	S70 E05 716	TERMINAL BLOCK	6P(L,N,Ⓞ,S1,S2,S3)	1	1	1	1		TB1			
23	G	S70 E50 316	CONTROL BOX ASSY		1								
	G	S70 E80 316	CONTROL BOX ASSY			1							
	G	S70 E60 316	CONTROL BOX ASSY				1						
	G	S70 E90 316	CONTROL BOX ASSY					1					
24	G	S70 410 708	CONTACTOR		1		1			52C			
25	G	S70 E10 234	RESISTOR		1		1			RS			
26	G	S70 K20 259	REACTOR		1	1	1	1		DCL			
27	G	S70 E11 313	POWER CIRCUIT BOARD		1	1	1	1		P.B.			
28	G	S70 H00 315	CONTROLLER CIRCUIT BOARD		1	1	1	1		C.B.			
29	G	S70 E30 202	THERMISTOR (HEAT SINK)		1	1	1	1		TH8			
30	G	S70 E10 233	ACTIVE FILTER MODULE		1		1			ACTM			
	G	S70 E20 233	ACTIVE FILTER MODULE			1		1		ACTM			
31	G	S70 E15 346	NOISE FILTER CIRCUIT BOARD		1		1			N.F.			
	G	S70 E20 346	NOISE FILTER CIRCUIT BOARD			1		1		N.F.			
32	G	S70 E35 202	THERMISTOR (OUTDOOR PIPE)		1	1	1	1		TH3			
33	G	S70 E05 255	MAIN SMOOTHING CAPACITOR		1	1	1	1		CB			

STRUCTURAL PARTS
PUHZ-P125VHA.UK
PUHZ-P140VHA.UK
PUHZ-P125VHA1.UK
PUHZ-P140VHA1.UK



No.	RoHS	Part No.	Part Name	Specification	Q'ty/set	Remarks (Drawing No.)	Wiring Diagram Symbol	Recom- mended Q'ty	Price	
					PUHZ-P 125, 140 VHA(1).UK				Unit	Amount
1	G	—	F.ST SCREW	(5X10)	46	(DG12F536H10)				
2	G	S70 E20 662	SIDE PANEL (L)		1					
3	G	S70 E20 675	FAN GRILLE		2					
4	G	S70 E20 668	FRONT PANEL		1					
5	G	—	SEPARATOR		1	(BK00C456G02)				
6	G	S70 E20 686	BASE ASSY		1					
7	G	S70 E20 130	MOTOR SUPPORT		1					
8	G	—	VALVE BED ASSY		1	(BK00C493G01)				
9	G	S70 30L 655	HANDLE		2					
10	G	S70 E10 658	COVER PANEL (FRONT)		1					
11	G	S70 E20 658	COVER PANEL (REAR)		1					
12	G	S70 E40 662	SIDE PANEL (R)		1					
13	G	S70 E40 661	SERVICE PANEL		1					
14	G	S70 E10 699	LABEL		1					
15	G	S70 E20 698	REAR GUARD		2					
16	G	S70 E10 641	TOP PANEL		1					
17	G	S70 E10 655	HANDLE		1					

MITSUBISHI ELECTRIC CORPORATION

HEAD OFFICE : TOKYO BLDG., 2-7-3, MARUNOUCHI, CHIYODA-KU, TOKYO 100-8310, JAPAN