

PARTS CATALOG

Series PLA Ceiling Cassettes R410A

 Indoor unit
 [Model names]
 PLA-RP35BA

[Service Ref.]

PLA-RP35BA
PLA-RP35BA₁
PLA-RP35BAR1

PLA-RP50BA

PLA-RP50BA
PLA-RP50BA₁
PLA-RP50BAR1

PLA-RP60BA

PLA-RP60BA
PLA-RP60BA₁
PLA-RP60BAR1

PLA-RP71BA

PLA-RP71BA
PLA-RP71BA₁
PLA-RP71BAR1

PLA-RP100BA

PLA-RP100BA

PLA-RP125BA

PLA-RP125BA

PLA-RP140BA

PLA-RP140BA

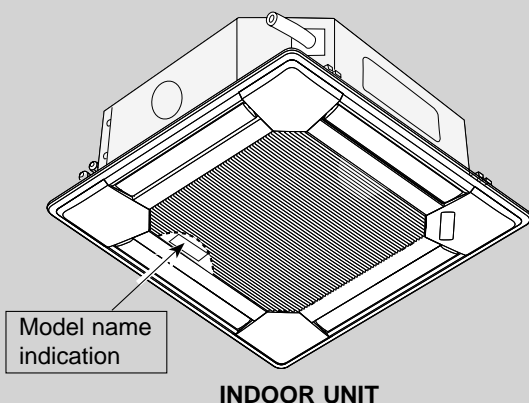
Revision:

- Part No. of VANE ASSY has been modified in REVISED EDITION-C.
- Some descriptions have been modified.

- Please void OCB416 REVISED EDITION-B.

Note:

- This manual describes only service data of the indoor units.
- RoHS compliant products have <G> mark on the spec name plate.

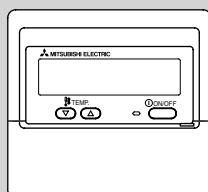
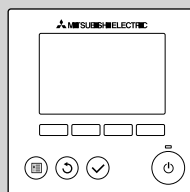


CONTENTS

1. RoHS PARTS LIST 2

SERVICE MANUAL (OCH416)

 Panel models: **PLP-6BALM**
PLP-6BAMD
PLP-6BAJ

 WIRELESS REMOTE
 CONTROLLER

 WIRED REMOTE
 CONTROLLER


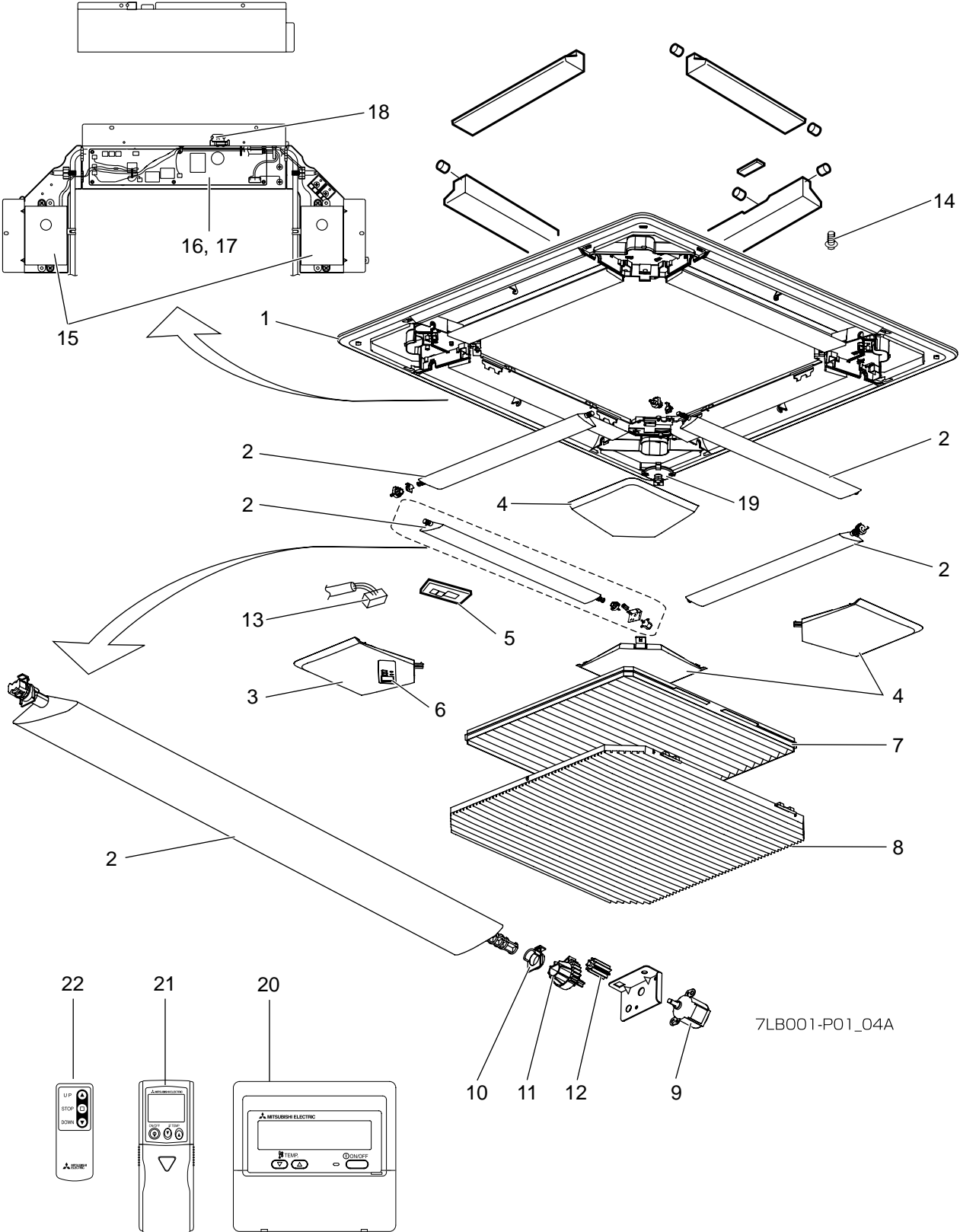
1 RoHS PARTS LIST

PANEL PARTS

PLP-6BALM (Wireless)

PLP-6BAMD (Wired)

PLP-6BAJ (Auto descending panel)



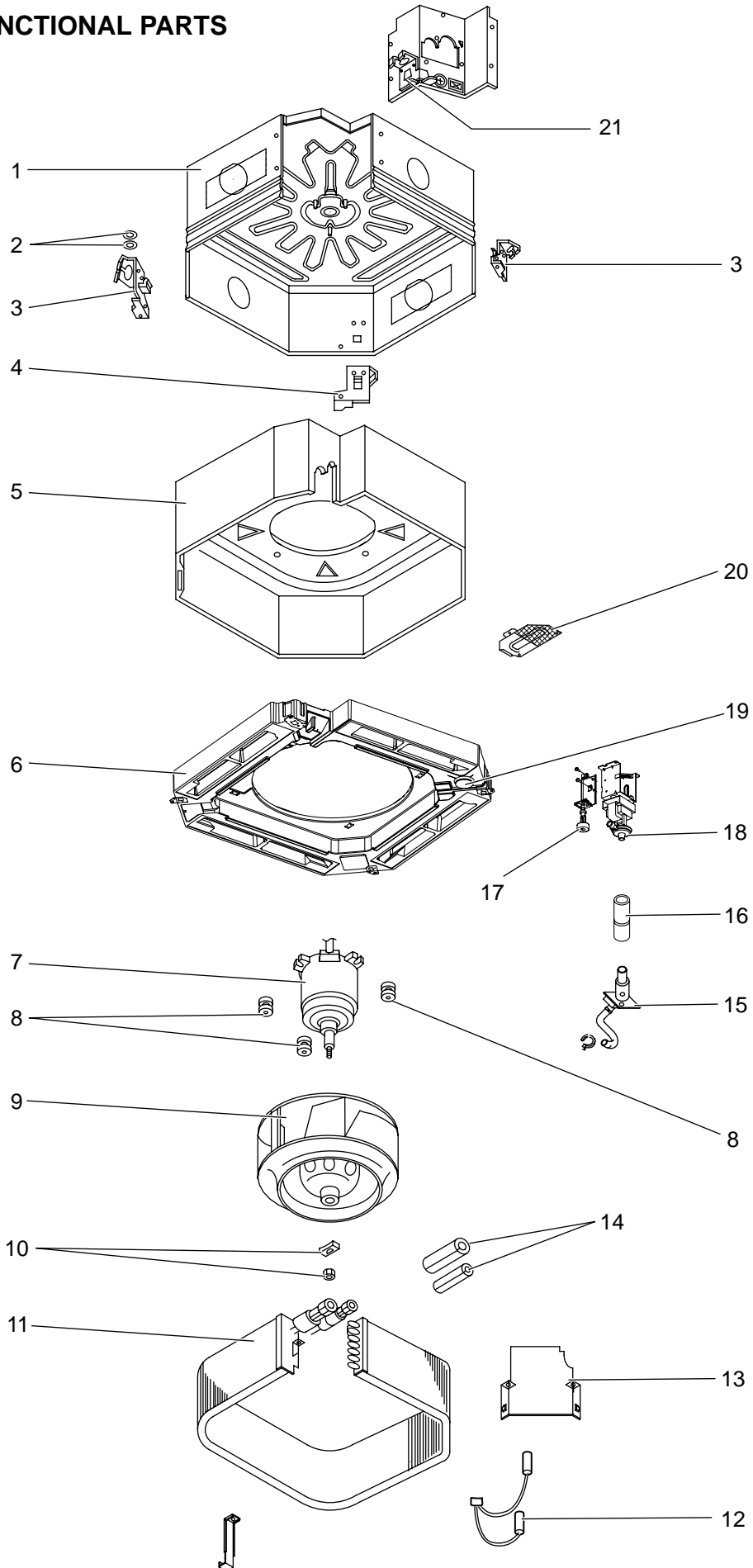
RoHS PARTS LIST

No.	RoHS	Part No.	Part Name	Specification	Q'ty/unit			Remarks (Drawing No.)	Wiring Diagram Symbol	Recom- mended Q'ty
					PLP-6					
					BALM	BAMD	BAJ			
1	G	R01 E18 003	AIR OUTLET GRILLE		1	1	1			
2	G	R01 E44 002	VANE ASSY		4	4	4			
3	G	T7W E03 638	CORNER PANEL			1				
	G	T7W E13 638	CORNER PANEL		1		1			
4	G	R01 E21 638	CORNER PANEL		3	3	3			
5	G	R01 E07 317	WIRELESS ADAPTOR		1		1		W.B	
6	G	R01 E20 658	RECEIVER		1		1		R.U	
7	G	R01 E16 500	L. L. FILTER		1	1	1			
8	G	R01 E35 691	GRILLE ASSY		1	1				
	G	R01 E36 691	GRILLE ASSY				1			
9	G	R01 E19 223	STEPPING MOTOR		4	4	4		MV	
10	G	R01 E02 063	VANE BUSH		4	4	4			
11	G	R01 E03 040	GEAR(VANE)		4	4	4			
12	G	R01 E04 040	GEAR(S/M)		4	4	4			
13	G	R01 E04 305	CABLE ASSY		1		1	for W.B.		
14	G	R01 E02 673	SCREW ASSY		1	1	1	Accessory		
15	G	R01 E07 471	MOTOR BOX				1	2 pcs/set	UK1	
16	G	R01 N73 310	CONTROLLER BOARD				1		U.B	
17	G	R01 E15 239	FUSE 3.15A 250V				1		FUSE	
18	G	R01 E06 272	LIMIT SWITCH				1		LS1	
19	G	R01 E03 523	SOCKET		1	1	1			
20	G	T7W E15 713	REMOTE CONTROLLER	PAR-21MAA		1				
21	G	T7W E10 714	REMOTE CONTROLLER	PAR-SL97A-E	1					
22	G	T7W E11 714	REMOTE CONTROLLER				1	for AUTO Grille		

RoHS PARTS LIST

STRUCTURAL AND FUNCTIONAL PARTS

- PLA-RP35BA
- PLA-RP50BA
- PLA-RP60BA
- PLA-RP71BA
- PLA-RP100BA
- PLA-RP125BA
- PLA-RP140BA
- PLA-RP35BA₁
- PLA-RP50BA₁
- PLA-RP60BA₁
- PLA-RP71BA₁
- PLA-RP35BAR1
- PLA-RP50BAR1
- PLA-RP60BAR1
- PLA-RP71BAR1



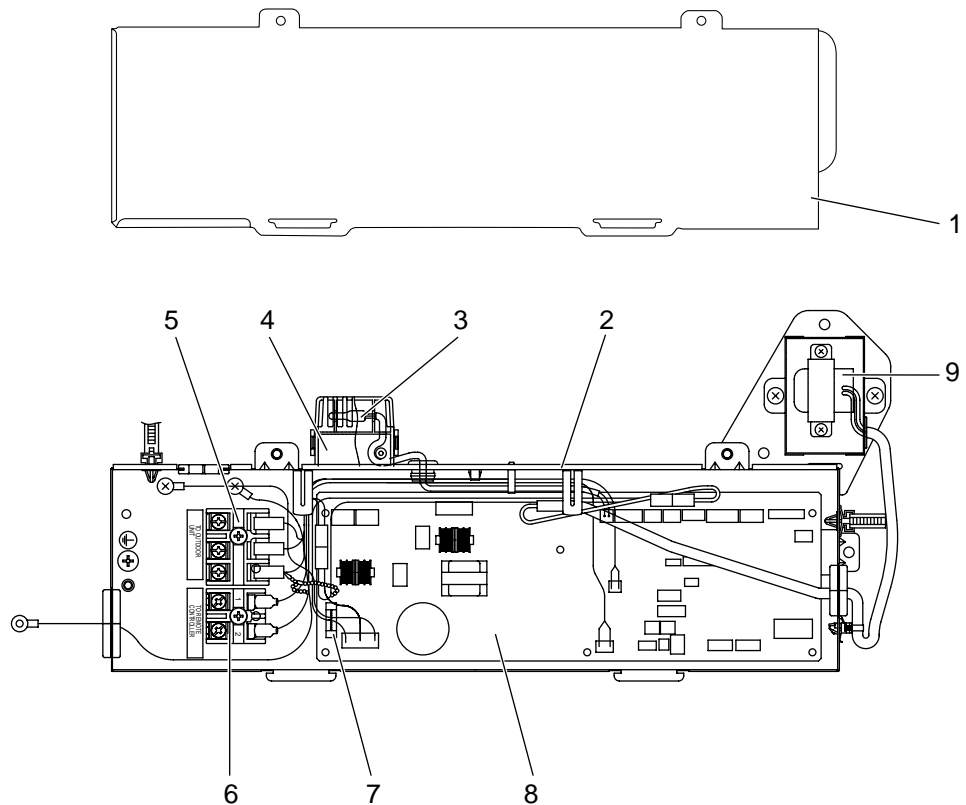
RoHS PARTS LIST

No.	RoHS	Part No.	Part Name	Specifi- cation	Q'ty/unit												Remarks (Drawing No.)	Wiring Diagram Symbol
					PLA-RP-BA						PLA-RP-BA ¹ PLA-RP-BAR1							
					35	50	60	71	100	125	140	35	50	60	71			
1	G	—	BASE ASSY		1	1	1	1				1	1	1	1	(BH00C810G11)		
	G	—	BASE ASSY						1	1	1					(BH00C810G12)		
2	G	R01 E13 097	WASHERS SET		1	1	1	1	1	1	1	1	1	1	1			
3	G	—	LEG -1A		2	2	2	2	2	2	2	2	2	2	2	(RG02N977G25)		
4	G	—	LEG-1B		1	1	1	1	1	1	1	1	1	1	1	(RG02N977G26)		
5	G	—	INNER COVER ASSY-S		1	1	1	1				1	1	1	1	(BH00C888G46)		
	G	—	INNER COVER ASSY-L						1	1	1					(BH00C888G48)		
6	G	R01 E21 529	DRAIN PAN		1	1	1	1	1	1	1	1	1	1	1			
7	G	R01 E25 220	FAN MOTOR		1	1	1	1									MF	
	G	R01 E60 220	FAN MOTOR						1	1	1						MF	
	G	R01 E59 220	FAN MOTOR									1	1	1	1		MF	
8	G	R01 E14 105	MOTOR MOUNT		3	3	3	3	3	3	3	3	3	3	3			
9	G	R01 E33 114	TURBO FAN		1	1	1	1										
	G	R01 E34 114	TURBO FAN						1	1	1							
	G	R01 E39 114	TURBO FAN									1	1	1	1			
10	G	R01 11K 097	SPL WASHER / NUT	M8	1	1	1	1	1	1	1							
	G	R01 10K 097	SPL WASHER / NUT	M6								1	1	1	1			
11	G	T7W H86 480	HEAT EXCHANGER		1	1						1	1					
	G	T7W H87 480	HEAT EXCHANGER				1							1				
	G	T7W H88 480	HEAT EXCHANGER					1							1			
	G	R01 AE3 480	HEAT EXCHANGER						1									
	G	R01 AA8 480	HEAT EXCHANGER							1								
	G	T7W H89 480	HEAT EXCHANGER								1							
12	G	T7W E50 202	THERMISTOR		1	1	1	1	1	1	1	1	1	1	1		TH2/TH5	
13	G	—	COIL PLATE		1	1	1	1	1	1	1	1	1	1	1	(RG02V078G04)		
14	G	R01 E02 660	PIPE COVERS SET		1	1	1	1	1	1	1	1	1	1	1			
15	G	R01 E05 523	DRAIN SOCKET		1	1	1	1	1	1	1	1	1	1	1			
16	G	R01 E07 523	SOCKET		1	1	1	1	1	1	1	1	1	1	1			
17	G	R01 E04 272	FLOAT SENSOR		1	1	1	1	1	1	1	1	1	1	1		FS	
18	G	T7W E14 355	DRAIN PUMP		1	1	1	1	1	1	1	1	1	1	1		DP	
19	G	R01 E02 524	DRAIN PLUG		1	1	1	1	1	1	1	1	1	1	1			
20	G	—	CORNER PLATE		1	1	1	1	1	1	1	1	1	1	1	(BH00C982G07)		
21	G	—	LEG-2		1	1	1	1	1	1	1	1	1	1	1	(RG02N978G13)		

RoHS PARTS LIST

ELECTRICAL PARTS

PLA-RP35BA
 PLA-RP50BA
 PLA-RP60BA
 PLA-RP71BA
 PLA-RP100BA
 PLA-RP125BA
 PLA-RP140BA
 PLA-RP35BA₁
 PLA-RP50BA₁
 PLA-RP60BA₁
 PLA-RP71BA₁
 PLA-RP35BAR1
 PLA-RP50BAR1
 PLA-RP60BAR1
 PLA-RP71BAR1



7LB001-E03_01

No.	RoHS	Part No.	Part Name	Specification	Q'ty/unit	Remarks (Drawing No.)	Wiring Diagram Symbol
					PLA-RP-BA PLA-RP-BA ₁ PLA-RP-BAR1		
					35/50/60/71/100/125/140		
1	G	—	CONTROL BOX COVER		1	(RG02Y333G05)	
2	G	—	ELECTRIC CONTROL BOX		1	(BH00C876G52)	
3	G	R01 H18 202	ROOM TEMP. THERMISTOR		1		TH1
4	G	R01 E01 520	SENSOR COVER-K		1		
5	G	R01 E20 246	TERMINAL BLOCK	3P (S1,S2,S3)	1		TB4
6	G	T7W E33 716	TERMINAL BLOCK	2P (1,2)	1		TB5
7	G	R01 E14 239	FUSE	6.3A, 250V	1		FUSE
8	G	T7W E62 310	INDOOR CONTROLLER BOARD		1		I.B
9	G	T7W E14 259	REACTOR		1		DCL

MITSUBISHI ELECTRIC CORPORATION

HEAD OFFICE : TOKYO BLDG., 2-7-3, MARUNOUCHI, CHIYODA-KU, TOKYO 100-8310, JAPAN