

# PARTS CATALOG

**R410A**

[Model name]

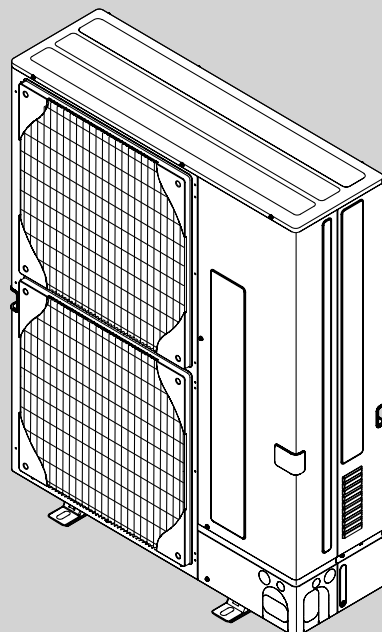
[Service Ref.]

PUHZ-HRP200YKA

**PUHZ-HRP200YKA**

Note:

- RoHS compliant products have <G> mark on the spec name plate.



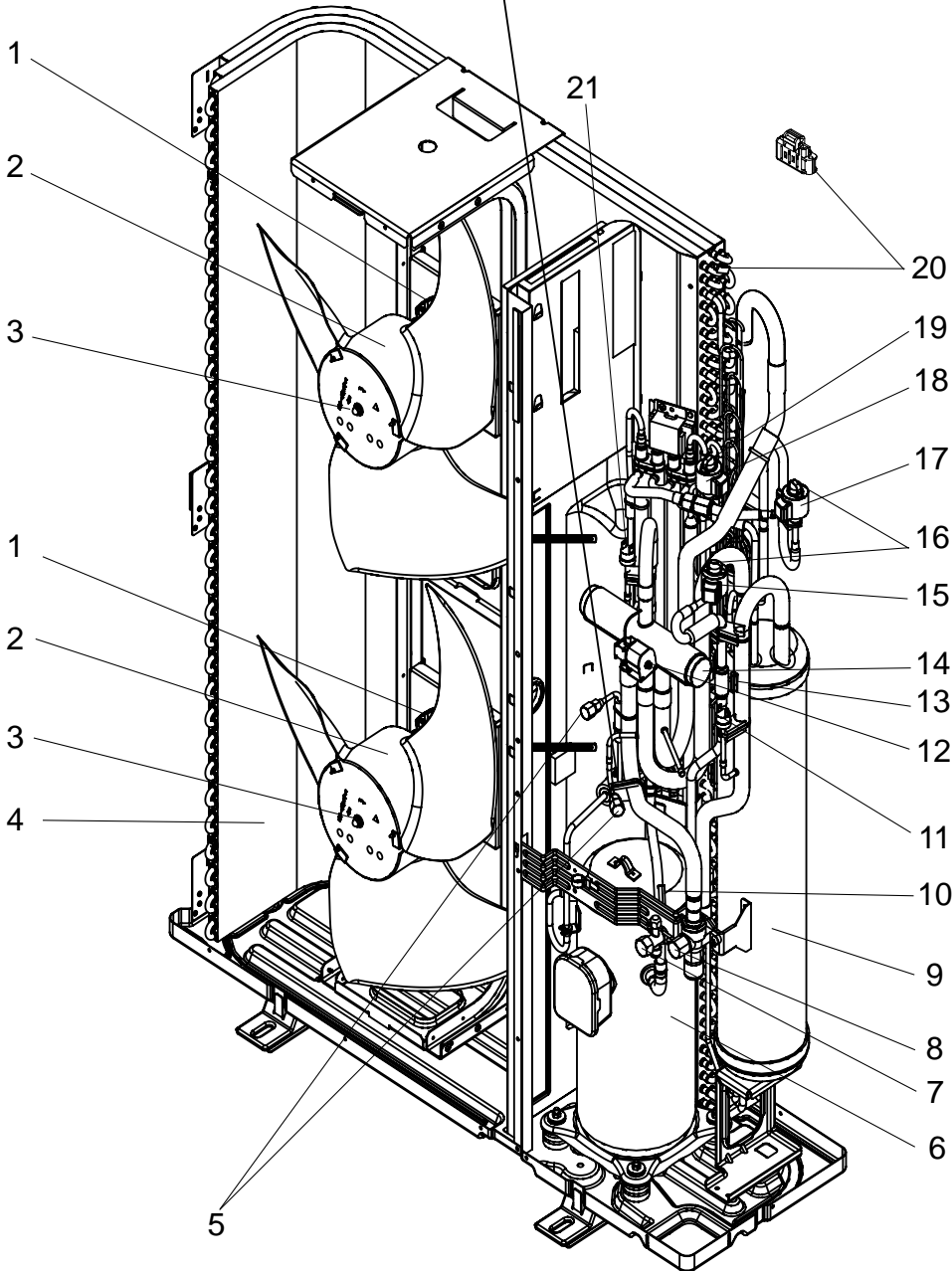
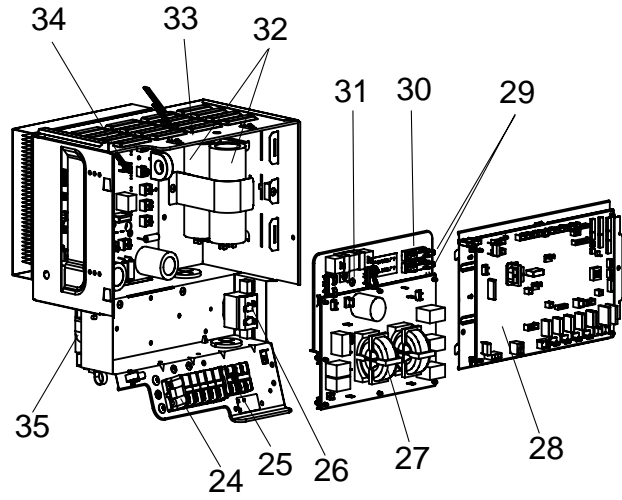
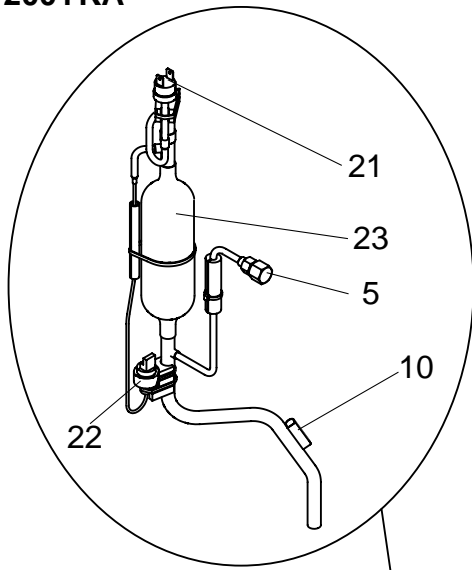
PUHZ-HRP200YKA

## CONTENTS

1. RoHS PARTS LIST ..... 2
2. OPTIONAL PARTS ..... 6

**SERVICE MANUAL (OCH466)**

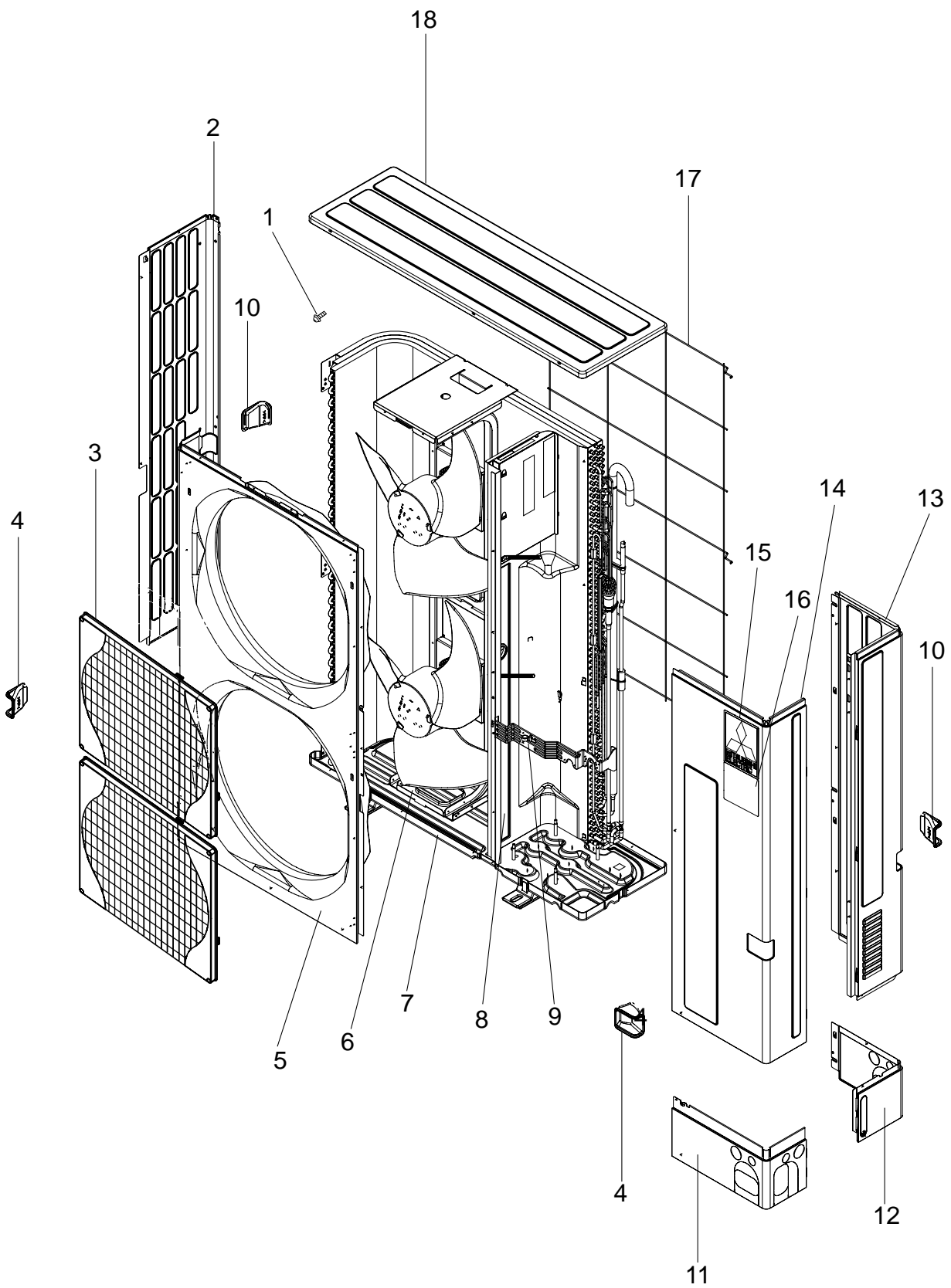
FUNCTIONAL AND ELECTRICAL PARTS  
PUHZ-HRP200YKA



Part numbers that are circled are not shown in the figures.

No.	RCHS	Part No.	Part Name	Specification	Q'ty/set		Remarks (Drawing No.)	Wiring Diagram Symbol	Recom- mended Q'ty
					PUHZ-HRP-YKA				
					200				
1	G	T7W E64 408	HEAT EXCHANGER			1			
2	G	R01 E46 221	FAN MOTOR			2		MF1,2	
3	G	R01 E10 115	PROPELLER FAN			2			
4	G	R01 E09 097	NUT	M6		2			
5	G	R01 E24 413	CHARGE PLUG			2			
6	G	T97 415 782	COMPRESSOR	ANB66FJHMT		1	with RUBBER MOUNTS	MC	
7	G	R01 E25 410	STOP VALVE 3/8			1			
8	G	R01 E13 411	BALL VALVE 3/4			1			
9	G	T7W E19 440	POWER RECEIVER			1			
10	G	T7W E17 201	THERMISTOR (DISCHARGE)			1		TH4	
11	G	R01 E00 209	LOW PRESSURE SWITCH			1		63L	
12	G	T7W E53 242	SOLENOID COIL			1		21S4	
13	G	R01 H17 202	THERMISTOR (SUCTION)			1		TH32	
14	G	R01 E12 403	4-WAY VALVE			1			
15	G	T7W E54 242	LEV COIL			1		LEV-B	
16	G	R01 H27 401	LEV			2			
17	G	R01 E50 242	LEV COIL			1		LEV-A	
18	G	T7W E55 242	LEV COIL			1		LEV-C	
19	G	R01 H20 401	LEV			1			
20	G	R01 N00 202	THERMISTOR (OUTDOOR 2PHASE PIPE, OUTDOOR)			1		TH6,7	
21	G	R01 E06 208	HIGH PRESSURE SWITCH	OFF 4.14MPa		1		63H	
22	G	R01 E07 208	HIGH PRESSURE SENSOR			1		63HS	
23	G	R01 E10 467	MUFFLER			1			
24	G	T7W E30 716	TERMINAL BLOCK	5P (L1,L2,L3,N,⊕)		1		TB1	
25	G	R01 E19 246	TERMINAL BLOCK	3P (S1,S2,S3)		1		TB2	
26	G	T7W E16 259	REACTOR			1		ACL4	
27	G	T7W E24 346	NOISE FILTER			1		N.F.	
28	G	T7W E89 315	CONTROLLER BOARD			1		C.B.	
29	G	R01 30L 241	FUSE HOLDER			2			
30	G	R01 E07 239	FUSE	250V 15A		2		FUSE1,2	
31	G	R01 E10 233	RESISTOR			1		RS	
32	G	R01 E02 254	MAIN SMOOTHING CAPACITOR			2		CB1,2	
33	G	—	ELECTRICAL PARTS BOX			1	(BK00B702G10)		
34	G	T7W E59 313	POWER BOARD			1		P.B.	
35	G	T7W E13 259	REACTOR			1		DCL	
36	G	R01 E96 202	THERMISTOR (OUTDOOR PIPE)			1		TH3	
37	G	R01 E14 239	FUSE	250V 6.3A		2		F3,4	

**STRUCTURAL PARTS**  
**PUHZ-HRP200YKA**





No.	RoHS	Part No.	Part Name	Specification	Q'ty/set	Remarks (Drawing No.)	Wiring Diagram Symbol	Recom- mended Q'ty
					PUHZ-HRP-YKA			
					200			
1	G	—	F.ST SCREW	(5x10)	38	(DG12F536H10)		
2	G	R01 E29 662	SIDE PANEL (L)		1			
3	G	T7W E08 691	FAN GRILLE		2			
4	G	R01 E04 655	HANDLE		2			
5	G	T7W E13 667	FRONT PANEL		1			
6	G	R01 E43 130	MOTOR SUPPORT		1			
7	G	R01 E41 686	BASE ASSY		1			
8	G	—	SEPARATOR		1	(BK00B817G73)		
9	G	—	VALVE BED ASSY		1	(BK00C375G07)		
10	G	R01 E03 655	HANDLE		2			
11	G	R01 E28 658	COVER PANEL (FRONT)		1			
12	G	R01 E27 658	COVER PANEL (REAR)		1			
13	G	T7W E30 661	SIDE PANEL (R)		1			
14	G	T7W E19 668	SERVICE PANEL		1			
15	G	—	LABEL (MITSUBISHI)		1	(DG79R130H01)		
16	G	—	LABEL (ZUBADAN)		1	(BH79L116H02)		
17	G	R01 E10 698	REAR GUARD		1			
18	G	R01 E30 641	TOP PANEL		1			

**2****OPTIONAL PARTS****2-1. AIR OUTLET GUIDE (HRP200 needs 2 pieces.)**

Part No.	PAC-SH96SG-E
----------	--------------

**2-2. AIR GUIDE (HRP200 needs 2 pieces.)**

Part No.	PAC-SH95AG-E
----------	--------------

**2-3. DRAIN SOCKET**

Part No.	PAC-SG61DS-E
----------	--------------

**2-4. DRAIN PAN**

Part No.	PAC-SH97DP-E
----------	--------------

**2-5. DISTRIBUTION PIPE**

Part No.	MSDD-50WR-E (Twin)
	MSDT-111R-E (Triple)
	MSDF-111R-E (Quadruple)

**2-6. A-CONTROL SERVICE TOOL**

Part No.	PAC-SK52ST
----------	------------

**2-7. INTER FACE**

Part No.	PAC-IF011B-E (I/F)
	PAC-IF021B-E (FTC)
	PAC-IF031B-E (FTC2)

**2-8. FILTER DRYER ( $\phi$ 9.52)**

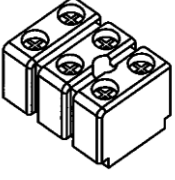

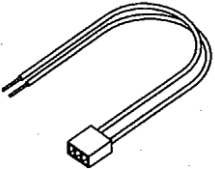
Part No.	PAC-SG82DR-E
----------	--------------

## 2-9. CONNECTOR FOR DRAIN HOSE HEATER

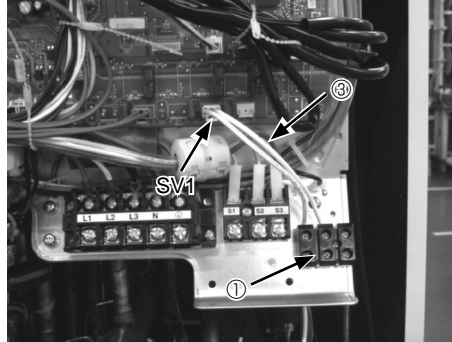
Part No.

PAC-SE60RA-E

### Contents

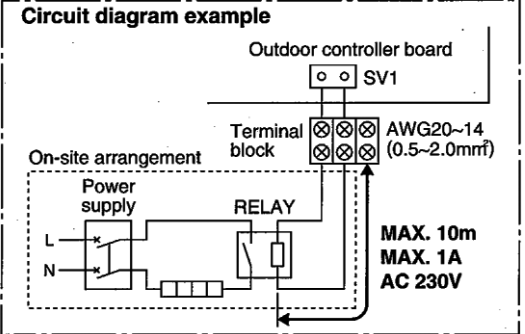
① Terminal block	×1
	
② Screw	×1
	
③ Lead wire with connector	×1
	

### Installation



1. Attach the terminal block ①, with the screw ②.
2. Connect the lead wire ③ connector side to SV1 port on the outdoor controller board.
3. Connect the lead wire ③ to the terminal block ①.
4. Wire local cables for a drain hose heater RELAY to the terminal block ①.

- Drain hose heater RELAY connection only
- MAX current 1A



SV1 on the controller board  
→ Drain hose heater signal output  
With PAC-SE60RA-E

**From defrost start**  
**For 15 min. ON signal provided**

Mr. SLIM™

 **mitsubishi electric corporation**

HEAD OFFICE : TOKYO BLDG., 2-7-3, MARUNOUCHI, CHIYODA-KU, TOKYO 100-8310, JAPAN