



SPLIT-TYPE, AIR CONDITIONERS
 SPLIT-TYPE, HEAT PUMP AIR CONDITIONERS

No. OB269



SERVICE MANUAL

Wireless type
 Models

MSC-C07TV	- <input type="checkbox"/> E1 (WH)	-	MU-C07TV	- <input type="checkbox"/> E1
MSC-C09TV	- <input type="checkbox"/> E1 (WH)	-	MU-C09TV	- <input type="checkbox"/> E1
MSC-C12TV	- <input type="checkbox"/> E1 (WH)	-	MU-C12TV	- <input type="checkbox"/> E1

MSC-C07TV	- <input type="checkbox"/> E1 (WH)	-	MUH-C07TV	- <input type="checkbox"/> E1
MSC-C09TV	- <input type="checkbox"/> E1 (WH)	-	MUH-C09TV	- <input type="checkbox"/> E1
MSC-C12TV	- <input type="checkbox"/> E1 (WH)	-	MUH-C12TV	- <input type="checkbox"/> E1

CONTENTS

1. TECHNICAL CHANGES	2
2. PART NAMES AND FUNCTIONS	5
3. SPECIFICATION	7
4. NOISE CRITERIA CURVES	9
5. OUTLINES AND DIMENSIONS	11
6. WIRING DIAGRAM	13
7. REFRIGERANT SYSTEM DIAGRAM	15
8. PERFORMANCE CURVES	18
9. MICROPROCESSOR CONTROL	35
10. SERVICE FUNCTIONS	45
11. TROUBLESHOOTING	48
12. DISASSEMBLY INSTRUCTIONS	59
13. PARTS LIST	65



MSC-C07TV - E1
 MSC-C09TV - E1
 MSC-C12TV - E1



13

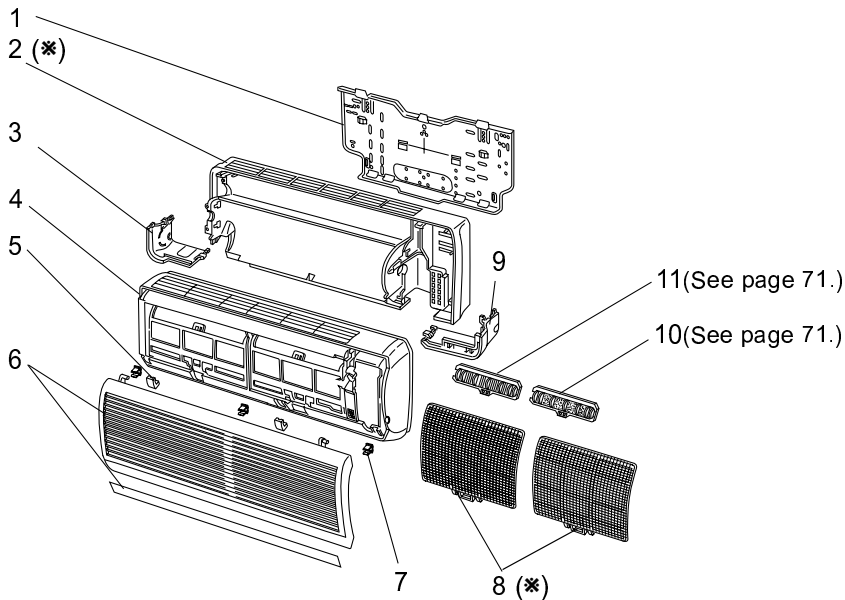
PARTS LIST

MSC-C07TV -E1 (WH)

MSC-C09TV -E1 (WH)

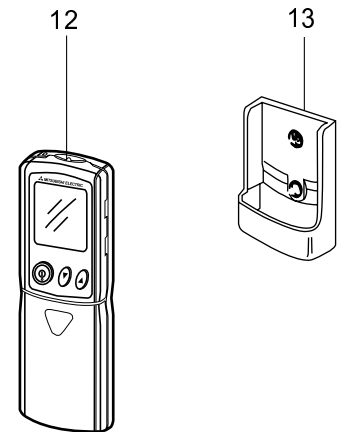
MSC-C12TV -E1 (WH)

13-1. INDOOR UNIT STRUCTURAL PARTS



(*)These figures show about MSC-C12TV.

13-2. REMOTE CONTROLLER AND ACCESSORY PART



13-1. INDOOR UNIT STRUCTURAL PARTS

No.	Part No.	Part Name	Symbol in Wiring Diagram	Q'ty/unit			Remarks
				MSC-C07TV -E1 (WH)	MSC-C09TV -E1 (WH)	MSC-C12TV -E1 (WH)	
1	E02 408 970	INSTALLATION PLATE		1	1	1	
2	E02 409 234	BOX(WH)		1	1		
	E02 411 234	BOX(WH)				1	
3	E02 409 976	CORNER BOX LEFT(WH)		1	1	1	
4	E02 424 000	FRONT PANEL ASSEMBLY(WH)		1	1	1	Including No.5,6,7
5	E02 409 067	SCREW CAP(WH)		2	2	2	2PCS/SET
6	E02 424 010	GRILLE(WH)		1	1	1	
7	E02 408 142	CATCH		3	3	3	3PCS/SET
8	E02 408 100	AIR FILTER		2	2		
	E02 410 100	AIR FILTER				2	
9	E02 409 975	CORNER BOX RIGHT(WH)		1	1	1	
10	—————	DEODORIZING FILTER		1	1	1	MAC-1800DF
11	—————	AIR CLEANING FILTER		1	1	1	MAC-1300FT

13-2. REMOTE CONTROLLER AND ACCESSORY PART

12	E02 583 426	REMOTE CONTROLLER		1	1	1	
13	E02 527 083	REMOTE CONTROLLER HOLDER		1	1	1	

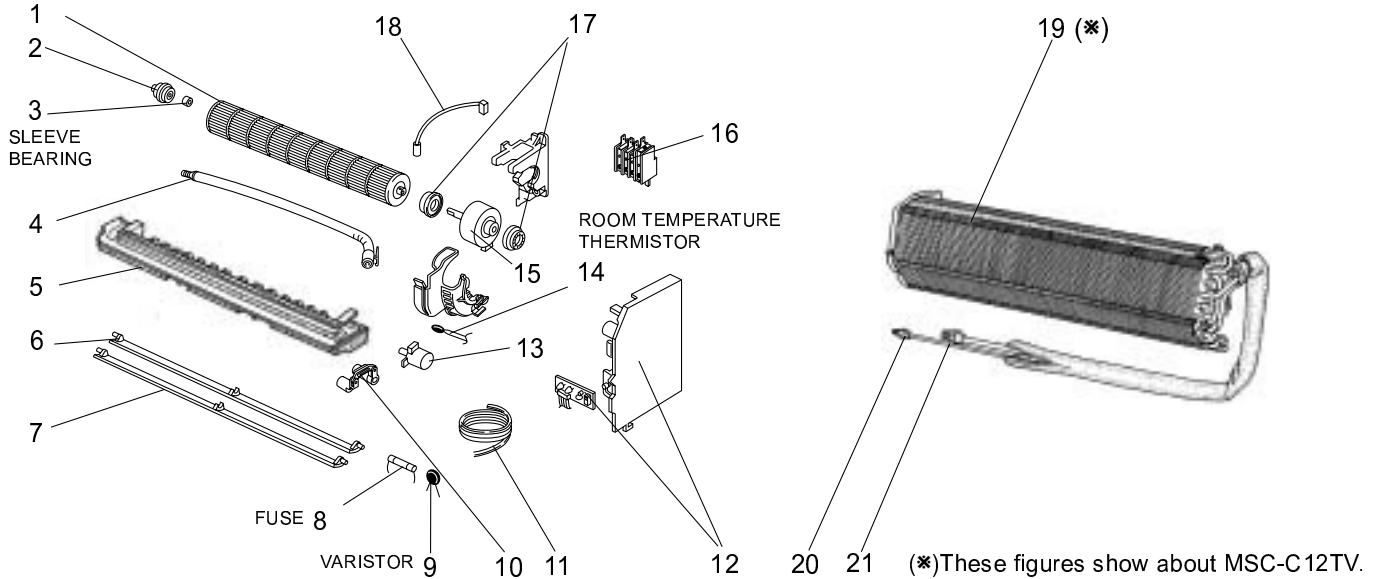
MSC-C07TV -[E1] (WH)

MSC-C09TV -[E1] (WH)

MSC-C12TV -[E1] (WH)

13-3. INDOOR UNIT FUNCTIONAL PARTS AND ELECTRICAL PARTS

13-4. INDOOR UNIT HEAT EXCHANGER



13-3. INDOOR UNIT FUNCTIONAL PARTS AND ELECTRICAL PARTS

No.	Part No.	Part Name	Symbol in Wiring Diagram	Q'ty/unit			Remarks
				MSC-C07TV -[E1](WH)	MSC-C09TV -[E1](WH)	MSC-C12TV -[E1](WH)	
1	E02 408 302	LINE FLOW FAN		1	1	1	
2	E02 408 509	BEARING MOUNT		1	1	1	
3	E02 001 504	SLEEVE BEARING		1	1	1	
4	E02 408 702	DRIAN HOSE		1	1	1	
5	E02 409 235	NOZZLE (WH)		1	1	1	
6	E02 409 040	VANE UPPER (WH)		1	1	1	
7	E02 409 041	VANE LOWER (WH)		1	1	1	
8	E02 127 382	FUSE	F11	1	1	1	3.15A
9	E02 336 385	VARISTOR	NR11	1	1	1	
10	E02 408 034	VANE CLANK SET		1	1	1	
11	E02 424 395	POWER SUPPLY CORD		1	1	1	
12	E02 608 452	ELECTRONIC CONTROL P.C.BOARD		1			AUTO RESTART
	E02 609 452	ELECTRONIC CONTROL P.C.BOARD			1		AUTO RESTART
	E02 610 452	ELECTRONIC CONTROL P.C.BOARD				1	AUTO RESTART
13	E02 408 303	VANE MOTOR	MV	1	1	1	
14	E02 408 308	ROOM TEMPERATURE THERMISTOR	RT11	1	1	1	
15	E02 151 300	INDOOR FAN MOTOR	MF	1	1	1	RC4V19-□□
16	E02 424 375	TERMINAL BLOCK	TB	1	1	1	3P
17	E02 151 505	FAN MOTOR RUBBER MOUNT		2	2	2	2PCS/SET
18	E02 408 307	INDOOR COIL THERMISTOR	RT12	1	1	1	

13-4. INDOOR UNIT HEAT EXCHANGER

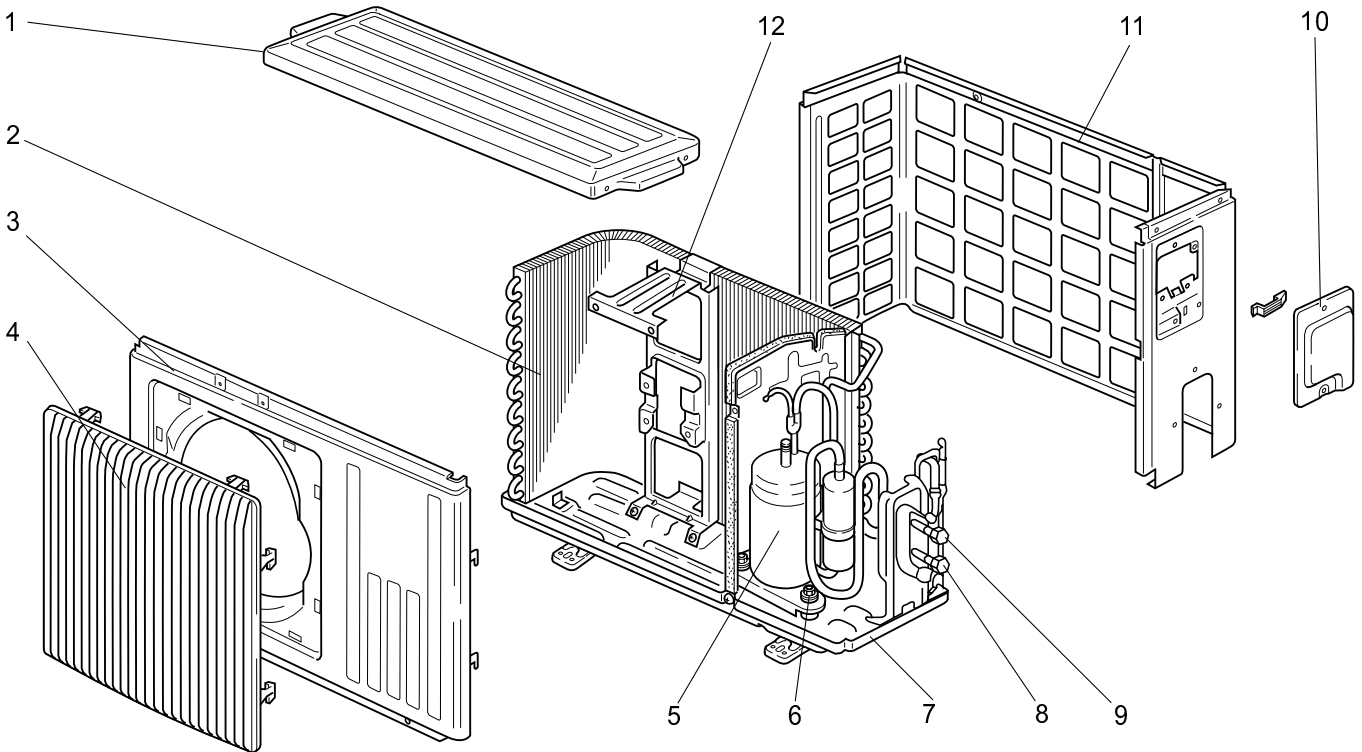
19	E02 408 620	INDOOR HEAT EXCHANGER		1	1		
	E02 515 620	INDOOR HEAT EXCHANGER				1	
20	E02 151 667	UNION(LIQUID)		1	1	1	φ6.35
21	E02 151 666	UNION(GAS)		1	1		φ9.52
	E02 155 666	UNION(GAS)				1	φ12.7

13-5. OUTDOOR UNIT STRUCTURAL PARTS

MU-C07TV -E1

MU-C09TV -E1

MU-C12TV -E1



Part number that is circled is not shown in the illustration.

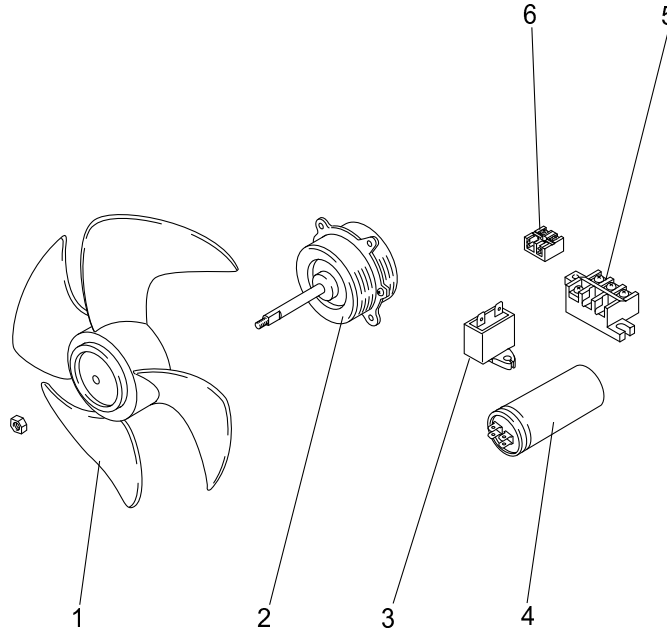
No.	Part No.	Part name	Symbol in Wiring Diagram	Q'ty/unit			Remarks
				MU-C07TV-E1	MU-C09TV-E1	MU-C12TV-E1	
1	E02 336 297	TOP PANEL		1	1	1	
2	E02 336 630	OUTDOOR HEAT EXCHANGER		1	1	1	
3	E02 336 232	CABINET		1	1	1	
4	E02 336 521	GRILLE		1	1	1	
5	E02 621 900	COMPRESSOR	MC	1			RE-130VGSHT
	E02 622 900	COMPRESSOR	MC		1		RE-145VGSHT
	E02 515 900	COMPRESSOR	MC			1	RE-231VHSHT
6	E02 336 506	COMPRESSOR RUBBER SET		3	3		3RUBBERS/SET
	E02 075 506	COMPRESSOR RUBBER SET				3	3RUBBERS/SET
7	E02 339 290	BASE		1	1		
	E02 340 290	BASE				1	
8	E02 621 661	STOP VALVE(GAS)		1	1		φ9.52
	E02 623 661	STOP VALVE(GAS)				1	φ12.7
9	E02 621 662	STOP VALVE(LIQUID)		1	1	1	φ6.35
10	E02 336 245	SERVICE PANEL		1	1	1	
11	E02 339 233	BACK PANEL		1	1		
	E02 440 233	BACK PANEL				1	
12	E02 336 515	MOTOR SUPPORT		1	1	1	
⑬	E02 339 936	CAPILLARY TUBE		1			φ3.0xφ1.4x600
	E02 023 936	CAPILLARY TUBE			1		φ3.0xφ1.4x750
	E02 412 936	CAPILLARY TUBE				1	φ3.0xφ1.6x600

MU-C07TV -E1

MU-C09TV -E1

MU-C12TV -E1

**13-6. OUTDOOR UNIT
FUNCTIONAL PARTS AND
ELECTRICAL PARTS**



Part numbers that are circled are not shown in the illustration.

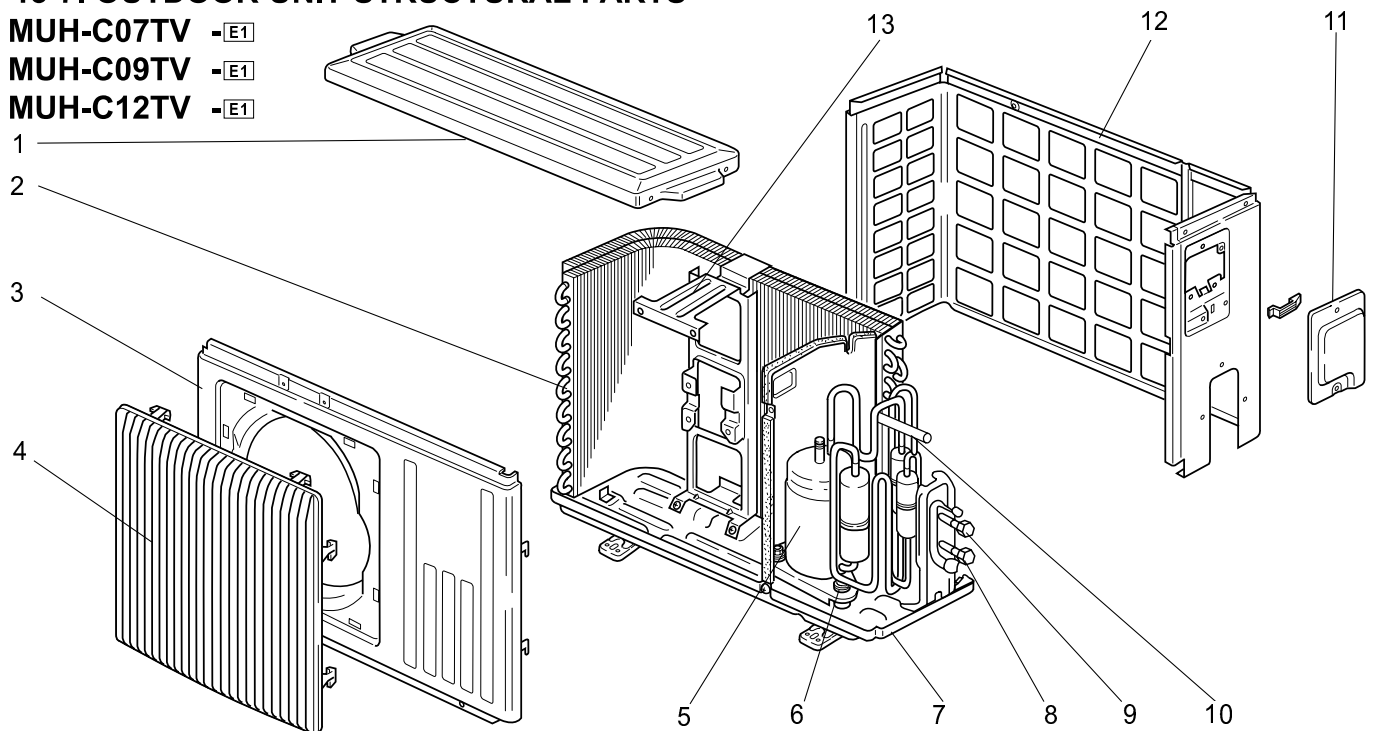
No.	Part No.	Part name	Symbol in Wiring Diagram	Q'ty/unit			Remarks
				MU-C07TV-E1	MU-C09TV-E1	MU-C12TV-E1	
1	E02 336 501	PROPELLER FAN		1	1	1	
2	E02 437 301	OUTDOOR FAN MOTOR	MF	1	1		RA6V23-□□
	E02 439 301	OUTDOOR FAN MOTOR	MF			1	RA6V33-□□
3	E02 095 350	OUTDOOR FAN CAPACITOR	C2	1	1	1	1.5μF /440VAC
4	E02 085 353	COMPRESSOR CAPACITOR	C1	1	1		25μF /440VAC
	E02 079 353	COMPRESSOR CAPACITOR	C1			1	30μF /440VAC
5	E02 466 375	TERMINAL BLOCK	TB1	1	1	1	3P
6	E02 438 374	TERMINAL BLOCK	TB2	1	1	1	2P
⑦	E02 466 340	CONTACTOR	52C	1	1	1	
⑧	E02 095 382	FUSE	F	1	1	1	250V/2A
⑨	E02 128 383	SURGE ABSORBER	DSAR	1	1	1	

13-7. OUTDOOR UNIT STRUCTURAL PARTS

MUH-C07TV -E1

MUH-C09TV -E1

MUH-C12TV -E1



These figures show about MUH-C09/C12TV.

Part numbers that are circled are not shown in the illustration.

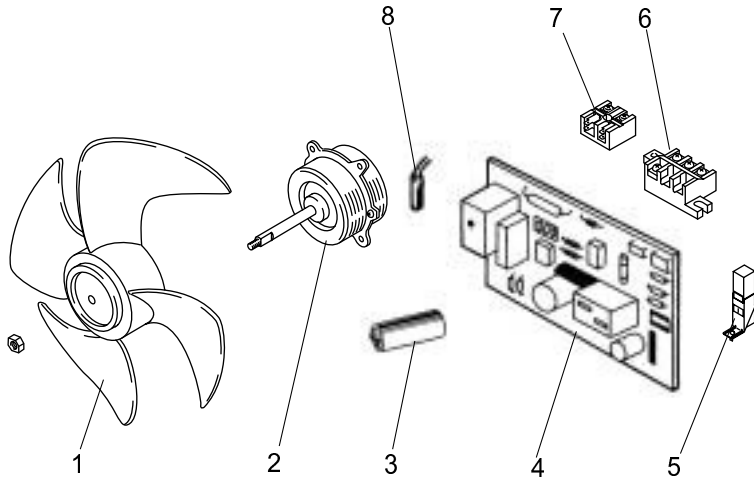
No.	Part No.	Part name	Symbol in Wiring Diagram	Q'ty/unit			Remarks
				MUH-C07TV-E1	MUH-C09TV-E1	MUH-C12TV-E1	
1	E02 336 297	TOP PANEL		1	1	1	
2	E02 440 630	OUTDOOR HEAT EXCHANGER		1			
	E02 628 630	OUTDOOR HEAT EXCHANGER			1	1	
3	E02 336 232	CABINET		1	1	1	
4	E02 336 521	GRILLE		1	1	1	
5	E02 513 900	COMPRESSOR	MC	1			RE-135VGSHT
	E02 514 900	COMPRESSOR	MC		1		RE-174VGSHT
	E02 515 900	COMPRESSOR	MC			1	RE-231VHSHT
6	E02 336 506	COMPRESSOR RUBBER SET		3	3		3RUBBERS/SET
	E02 075 506	COMPRESSOR RUBBER SET				3	3RUBBERS/SET
7	E02 339 290	BASE		1	1		
	E02 340 290	BASE				1	
8	E02 621 661	STOP VALVE(GAS)		1	1		φ9.52
	E02 623 661	STOP VALVE(GAS)				1	φ12.7
9	E02 627 662	STOP VALVE(LIQUID)		1	1	1	φ6.35
10	E02 444 961	4-WAY VALVE		1	1	1	
11	E02 336 245	SERVICE PANEL		1	1	1	
12	E02 440 233	BACK PANEL		1	1	1	
13	E02 336 515	MOTOR SUPPORT		1			
	E02 442 515	MOTOR SUPPORT			1	1	
⑭	E02 159 936	CAPILLARY TUBE		2			φ3.0xφ1.4x800
	E02 156 936	CAPILLARY TUBE			2	2	φ3.0xφ1.4x500
	E02 139 936	CAPILLARY TUBE		1			φ3.0xφ1.6x750
	E02 627 936	CAPILLARY TUBE			1	1	φ3.0xφ1.8x400
	E02 408 936	CAPILLARY TUBE		1			φ3.0xφ1.4x700
	E02 172 937	CAPILLARY TUBE			1		φ3.0xφ1.4x650
	E02 515 937	CAPILLARY TUBE				1	φ3.0xφ1.6x800
⑮	E02 154 642	CHECK VALVE		1	1	1	

MUH-C07TV -E1

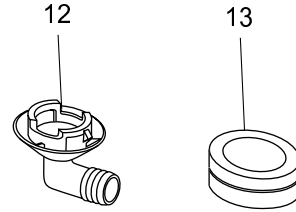
MUH-C09TV -E1

MUH-C12TV -E1

13-8. OUTDOOR UNIT FUNCTIONAL PARTS AND ELECTRICAL PARTS



13-9. ACCESSORY PARTS



13-8. OUTDOOR UNIT FUNCTIONAL PARTS AND ELECTRICAL PARTS

Part numbers that are circled are not shown in the illustration.

No.	Part No.	Part name	Symbol in Wiring Diagram	Q'ty/unit			Remarks
				MUH-C07TV-E1	MUH-C09TV-E1	MUH-C12TV-E1	
1	E02 336 501	PROPELLER FAN		1	1	1	
2	E02 440 301	OUTDOOR FAN MOTOR	MF	1			RA6V23-□□
	E02 442 301	OUTDOOR FAN MOTOR	MF		1	1	RA6V33-□□
3	E02 085 353	COMPRESSOR CAPACITOR	C1	1	1		25 μ F /440VAC
	E02 079 353	COMPRESSOR CAPACITOR	C1			1	30 μ F /440VAC
4	E02 626 451	DEICER P.C. BOARD		1			
	E02 627 451	DEICER P.C. BOARD			1		
	E02 628 451	DEICER P.C. BOARD				1	
5	E02 128 383	SURGE ABSORBER	DSAR	1	1	1	
6	E02 466 375	TERMINAL BLOCK	TB1	1	1	1	3P
7	E02 440 374	TERMINAL BLOCK	TB2	1	1	1	2P
8	E02 289 310	DEFROST THERMISTOR	RT61	1			
	E02 440 310	DEFROST THERMISTOR	RT61		1	1	
⑨	E02 440 490	R.V. COIL	21S4	1	1	1	
⑩	E02 095 382	FUSE	F61	1	1	1	250V 2A
⑪	E02 336 385	VARISTOR	NR61	1	1	1	

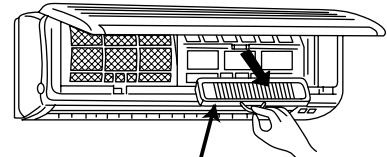
13-9. ACCESSORY PARTS

12	E02 444 704	DRAIN SOCKET		1	1	1	
13	E02 440 705	DRAIN CAP		2	2	2	2PCS/SET

13-10. AIR CLEANING FILTER

- AIR CLEANING FILTER removes fine dust of 0.01 micron from air by means of static electricity.
- Normal life of AIR CLEANING FILTER is 4 months. However, when it becomes dirty, replace it as soon as possible.
- Clogged AIR CLEANING FILTER may reduce the air conditioner capacity or cause frost on the air outlet.
- DO NOT reuse AIR CLEANING FILTER even if it is washed.
- DO NOT remove or attach AIR CLEANING FILTER during unit operation.

Model	Part No.
MSC-C07TV- E1	MAC-1300FT
MSC-C09TV- E1	
MSC-C12TV- E1	

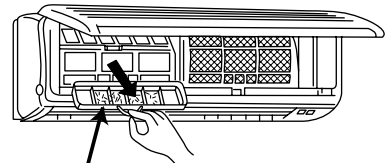


Air cleaning filter (White bellow type)

13-11. DEODORIZING FILTER

- DEODORIZING FILTER removes ammonia and hydrogen sulphide emitted from tobacco, and odor of pets.
- Clean DEODORIZING FILTER every two weeks. If the filter is particularly dirty, clean the filter more often.
- For cleaning, soak the filter in warm water for a while, and then wash and rinse it. Dry the filter in the shade thoroughly.
- When the filter color is still dark even after cleaning, replace the filter with a new one.
Replace the filter at least once a year.

Model	Part No.
MSC-C07TV- E1	MAC-1800DF
MSC-C09TV- E1	
MSC-C12TV- E1	



Deodorizing filter (Gray sponge type)

- DEODORIZING FILTER and AIR CLEANING FILTER can be attached on either side.