

**Revision A:**

- MU-A12YV -[E1] can be connected to MCF-A12WV -[E1].

Please void OB330.

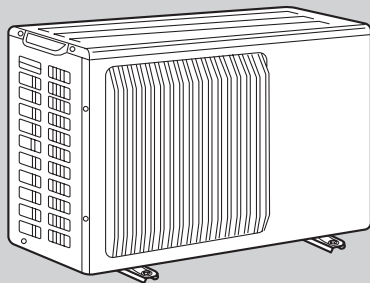
**No. OB330**  
REVISED EDITION-A



# SERVICE MANUAL

**Wireless type  
Models**

- MU-A07YV** -[E1]
- MU-A09YV** -[E1]
- MU-A12YV** -[E1]



Indication of  
model name

- MU-A07YV -[E1]
- MU-A09YV -[E1]
- MU-A12YV -[E1]

## CONTENTS

1. TECHNICAL CHANGES .....	2
2. PART NAMES AND FUNCTIONS .....	5
3. SPECIFICATION .....	5
4. NOISE CRITERIA CURVES .....	6
5. OUTLINES AND DIMENSIONS .....	7
6. WIRING DIAGRAM .....	7
7. REFRIGERANT SYSTEM DIAGRAM .....	8
8. PERFORMANCE CURVES .....	9
9. TROUBLESHOOTING .....	20
10. DISASSEMBLY INSTRUCTIONS .....	23
11. PARTS LIST .....	26

**NOTE:**

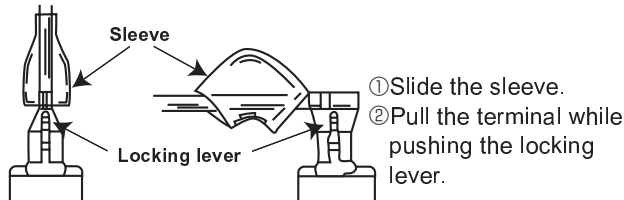
- This service manual describes technical data of outdoor units.
- As for indoor units MSC-A07YV -[E1], MSC-A09YV -[E1] and MSC-A12YV -[E1], refer to the service manual OB329.
- As for indoor unit MCF-A12WV -[E1], refer to the service manual OB338.



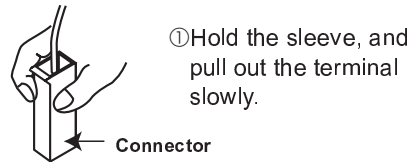
<"Terminal with lock mechanism" Detaching points>

In case of terminal with lock mechanism, detach the terminal as shown below.  
 There are two types ( Refer to (1) and (2)) of the terminal with lock mechanism.  
 The terminal with no lock mechanism can be removed by pulling it out.  
 Check the shape of the terminal and work.

(1) Slide the sleeve and check if there is a locking lever or not.



(2) The terminal with this connector is a terminal with lock mechanism



**MU-A07YV -E1 MU-A09YV -E1 MU-A12YV -E1**  
**OUTDOOR UNIT**

OPERATING PROCEDURE	PHOTOS
<p><b>1. Removing the cabinet</b></p> <ol style="list-style-type: none"> <li>(1) Remove the screws of the top panel.</li> <li>(2) Remove the screw of the service panel.</li> <li>(3) Remove the screws of the cabinet.</li> <li>(4) Remove the screws of the front panel and motor support.</li> <li>(5) Remove the service panel, and remove the screw from the insides.</li> <li>(6) Remove the top panel.</li> <li>(7) Remove the cabinet.</li> </ol> <p><b>Photo 3</b></p> <p>Screws of the service panel              Screws of the top panel              Service panel</p>	<p><b>Photo 1</b></p> <p>Screws of the front panel and motor support              Screws of the cabinet              Screws of the cabinet</p> <p><b>Photo 2</b></p> <p>Screws of the top panel              Screws of the cabinet</p>

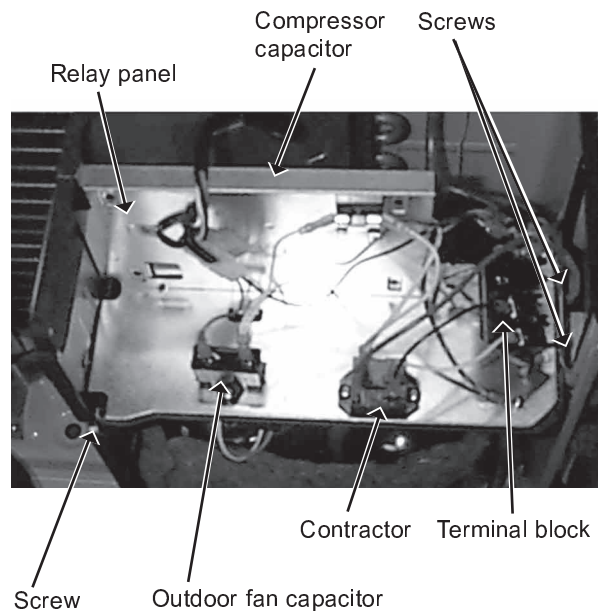
## OPERATING PROCEDURE

### 2. Removing the electrical parts

- (1) Remove the service panel and the cabinet.(Refer to 1.)
- (2) Remove the following parts.
  - Compressor capacitor (C1)
  - Outdoor fan capacitor (C2)
  - Terminal block

## PHOTOS

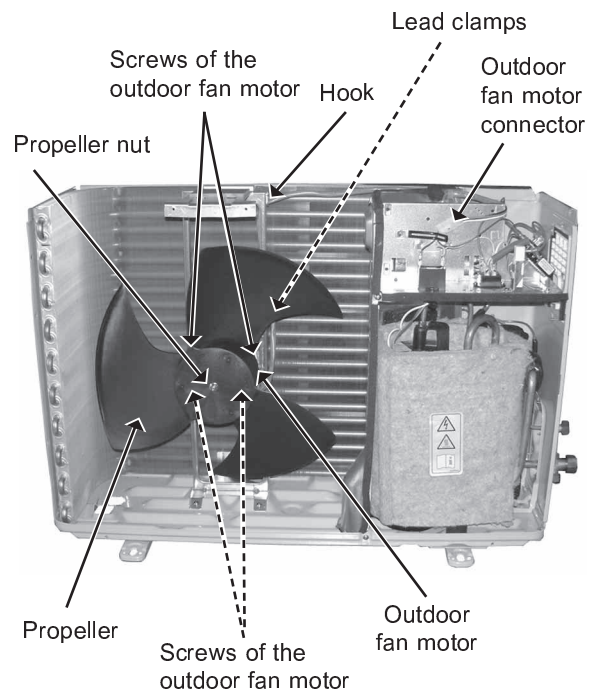
Photo 4



### 3. Removing the propeller and the outdoor fan motor

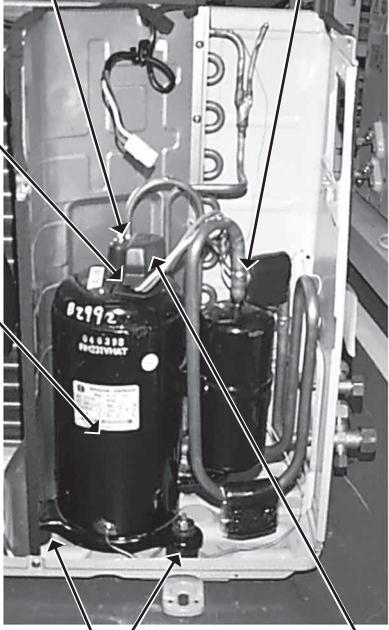
- (1) Remove the cabinet. (Refer to 1.)
  - (2) Remove the propeller nut.
  - (3) Remove the propeller.
- NOTE : Loose the propeller in the rotating direction for removal.**
- When attaching the propeller, align the mark on the propeller and the motor shaft cut section.  
Set the propeller in position by using the cut on the shaft and the mark on the propeller.
- (4) Remove lead clamps and disconnect the outdoor fan motor connector.
  - (5) Remove screws fixing the fan motor.
  - (6) Remove the outdoor fan motor.

Photo 5





OPERATING PROCEDURE
<p><b>4. Removing the compressor</b></p> <ol style="list-style-type: none"><li>(1) Remove the cabinet. (Refer to 1.)</li><li>(2) Remove the relay panel.</li><li>(3) Remove the soundproof felt.</li><li>(4) Remove the terminal cover on the compressor.</li><li>(5) Disconnect lead wires from the glass terminal of the compressor.</li><li>(6) Recover gas from the refrigerant circuit.</li><li>(7) Disconnect the welded part of the discharge pipe.</li><li>(8) Disconnect the welded part of the suction pipe.</li><li>(9) Remove nuts fixing the compressor.</li><li>(10) Remove the compressor.</li></ol> <p><b>NOTE</b></p> <ul style="list-style-type: none"><li>● Before using a burner, reclaim gas from the pipes until the pressure gauge shows 0 kg/cm<sup>2</sup> (0 MPa) .</li><li>● Use the burner under the condition that gas can be recovered even when the inner pressure rises by heat.</li></ul>

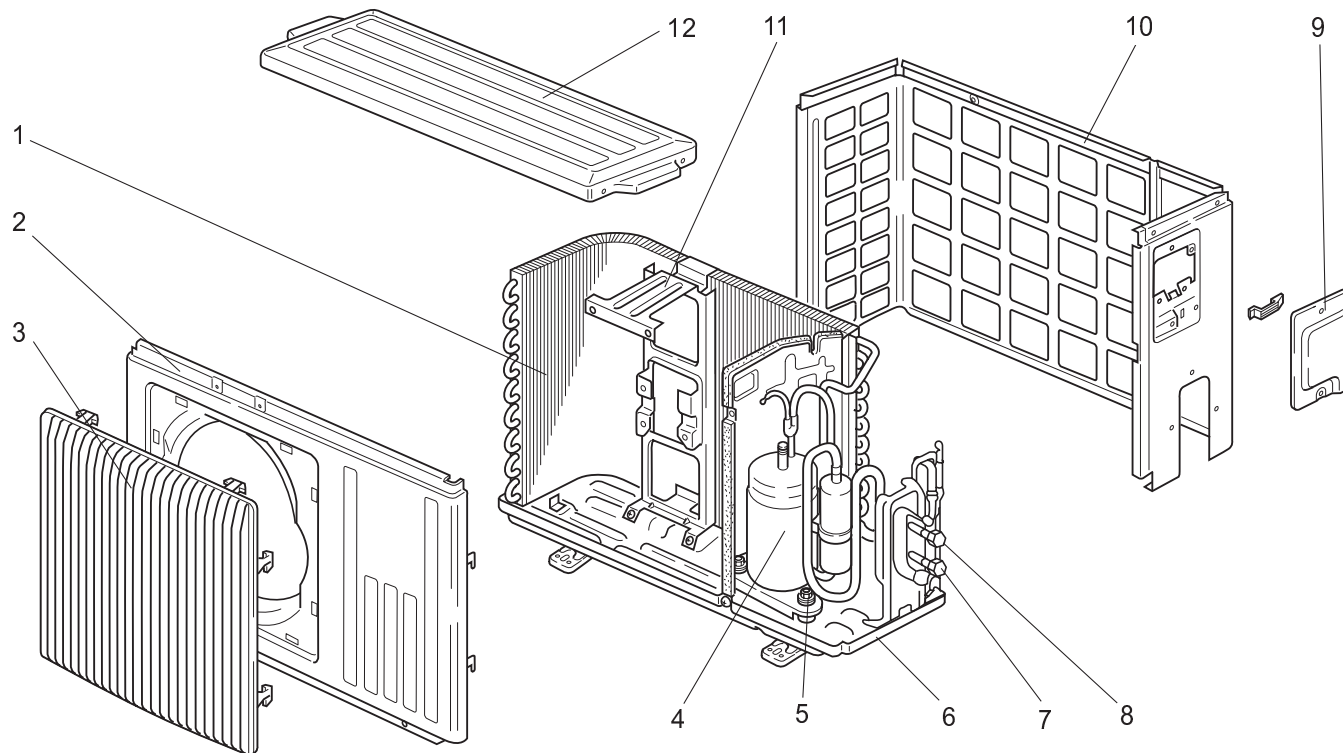
PHOTOS
<p><b>Photo 6</b></p>  <p>Discharge pipe</p> <p>Suction pipe</p> <p>Glass terminal</p> <p>Compressor</p> <p>Compressor set nuts</p> <p>Terminal cover</p>

MU-A07YV -E1

MU-A09YV -E1

MU-A12YV -E1

## 11-1. OUTDOOR UNIT STRUCTURAL PARTS

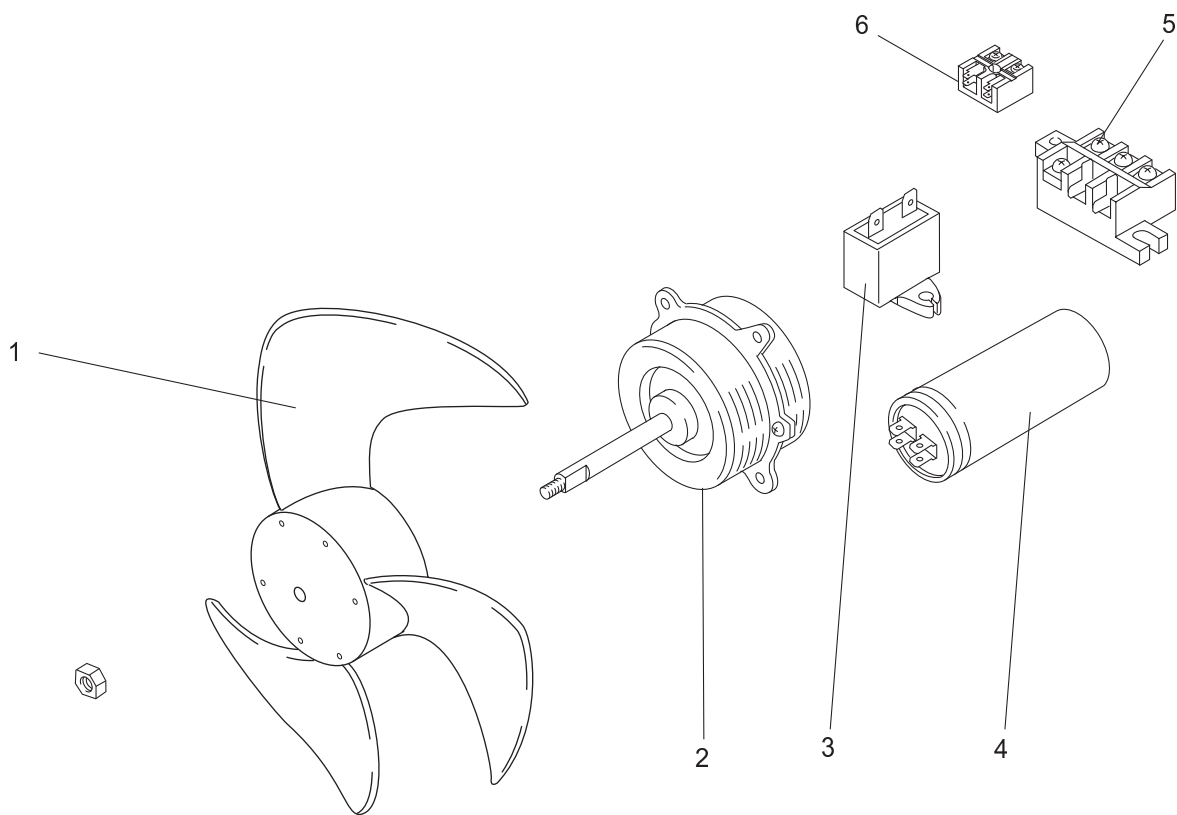


Part number that is circled is not shown in the illustration.

No.	Part No.	Part name	Symbol in Wiring Diagram	Q'ty/unit			Remarks
				MU-A07YV- E1	MU-A09YV- E1	MU-A12YV- E1	
1	E02 832 630	OUTDOOR HEAT EXCHANGER		1	1	1	
2	E02 815 232	CABINET		1	1	1	
3	E02 815 521	GRILLE(OUT)		1	1	1	
4	E02 742 900	COMPRESSOR	MC	1			RN092VHSHT
	E02 743 900	COMPRESSOR	MC		1		RN099VHSHT
	E02 754 900	COMPRESSOR	MC			1	RN135VHSHT
5	E02 075 506	COMPRESSOR RUBBER SET		3	3	3	3RUBBERS/SET
6	E02 832 290	BASE		1	1	1	
7	E02 742 661	STOP VALVE(GAS)		1	1		φ9.52
	E02 747 661	STOP VALVE(GAS)				1	φ12.7
8	E02 742 662	STOP VALVE(LIQUID)		1	1	1	φ6.35
9	E02 815 245	SERVICE PANEL		1	1	1	
10	E02 815 233	BACK PANEL		1	1		
	E02 835 233	BACK PANEL				1	
11	E02 336 515	MOTOR SUPPORT		1	1	1	
12	E02 815 297	TOP PANEL		1	1	1	
13	E02 459 936	CAPILLARY TUBE		1	1		φ3.0xφ1.4x900
	E02 441 936	CAPILLARY TUBE				1	φ3.0xφ1.4x550

MU-A07YV -E1 MU-A09YV -E1 MU-A12YV -E1

11-2. OUTDOOR UNIT ELECTRICAL PARTS AND FUNCTIONAL PARTS



Part numbers that are circled are not shown in the illustration.

No.	Part No.	Part name	Symbol in Wiring Diagram	Q'ty/unit			Remarks
				MU-A07YV- E1	MU-A09YV- E1	MU-A12YV- E1	
1	E02 665 501	PROPELLER		1	1	1	
2	E02 832 301	OUTDOOR FAN MOTOR	MF	1	1		RC6V20-□□
	E02 677 301	OUTDOOR FAN MOTOR	MF			1	RA6V33-□□
3	E02 661 351	OUTDOOR FAN CAPACITOR	C2	1	1		1.5 $\mu$ F /440V AC
	E02 664 351	OUTDOOR FAN CAPACITOR	C2			1	2.0 $\mu$ F /440V AC
4	E02 752 353	COMPRESSOR CAPACITOR	C1	1			20 $\mu$ F /440V AC
	E02 694 353	COMPRESSOR CAPACITOR	C1		1		25 $\mu$ F /440V AC
	E02 696 353	COMPRESSOR CAPACITOR	C1			1	30 $\mu$ F /440V AC
5	E02 817 374	TERMINAL BLOCK	TB1	1	1	1	3P
6	E02 832 374	TERMINAL BLOCK	TB2	1	1	1	2P
⑦	E02 466 340	COMPRESSOR CONTACTOR	52C	1	1	1	
⑧	E02 128 383	SURGE ABSORBER	DSAR	1	1	1	



HEAD OFFICE: MITSUBISHI DENKI BLDG., 2-2-3, MARUNOUCHI, CHIYODA-KU, TOKYO100-8310, JAPAN

© Copyright 2003 MITSUBISHI ELECTRIC ENGINEERING CO.,LTD  
Distributed in Mar. 2004. No.OB330 REVISED EDITION-A 6  
Distributed in Dec. 2003. No.OB330 6  
Made in Japan

New publication, effective Mar. 2004  
Specifications subject to change without notice.