

Revision A:

- RoHS PARTS LIST has been added.

Please void OB382.

INDOOR UNIT

SERVICE MANUAL

No. OB382
REVISED EDITION-A

Wireless type Models

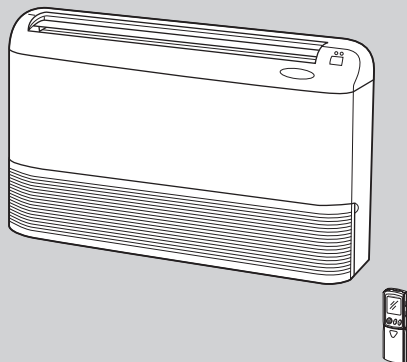
MCF-GA35VB - E1

MCF-GA50VB - E1

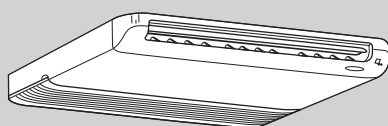
MCF-GA60VB - E1

Outdoor unit service manual
MUCF-GA•VB Series (OB383)

(When installed on the floor)



(When installed on the ceiling)



CONTENTS

1. TECHNICAL CHANGES	2
2. PART NAMES AND FUNCTIONS	2
3. SPECIFICATION	4
4. NOISE CRITERIA CURVES	5
5. OUTLINES AND DIMENSIONS	6
6. WIRING DIAGRAM	6
7. REFRIGERANT SYSTEM DIAGRAM	7
8. SERVICE FUNCTIONS	8
9. TROUBLESHOOTING	10
10. DISASSEMBLY INSTRUCTIONS	15
11. PARTS LIST	17
12. RoHS PARTS LIST	19
13. OPTIONAL PARTS	21

NOTE:

This service manual describes technical data of the indoor units.
RoHS compliant products have <G> mark on the spec name plate.
For servicing of RoHS compliant products, refer to the RoHS PARTS LIST (RoHS compliant).

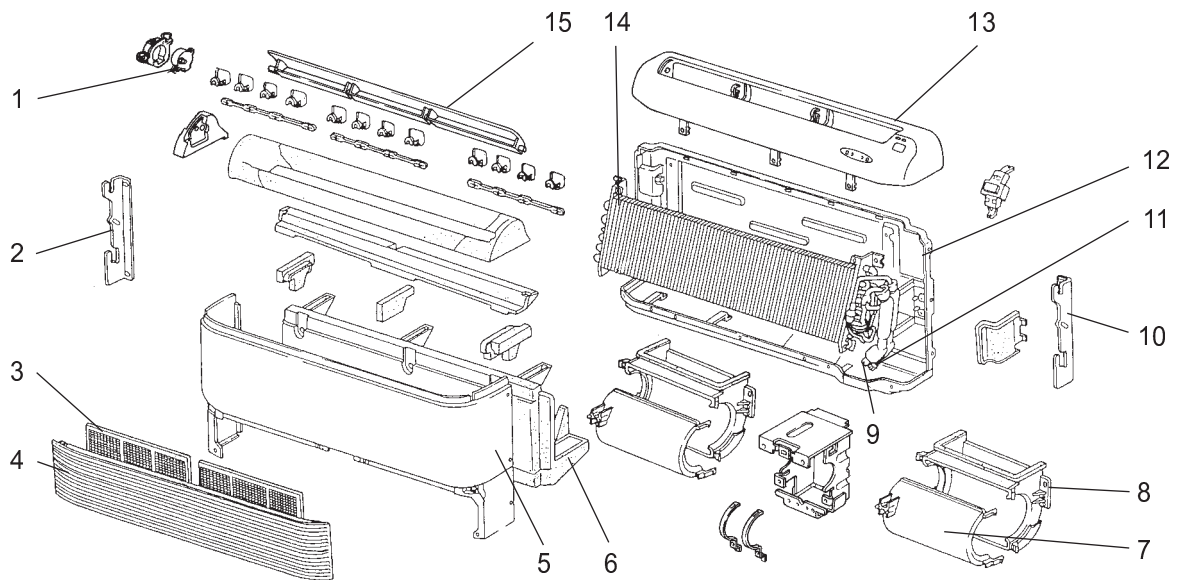


11

PARTS LIST (non-RoHS compliant)

MCF-GA35VB
MCF-GA50VB
MCF-GA60VB

11-1. INDOOR UNIT STRUCTURAL PARTS



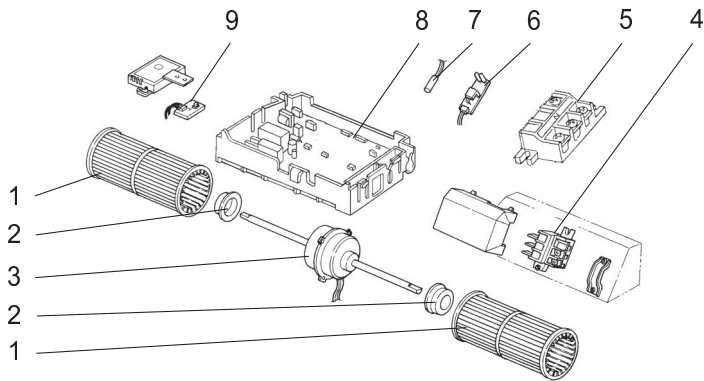
Part number that is circled is not shown in the illustration.

No.	Part No.	Part name	Symbol in Wiring Diagram	Q'ty/unit			Remarks
				MCF-GA35VB -E1	MCF-GA50VB -E1	MCF-GA60VB -E1	
1	E02 227 303	VANE MOTOR	MV	1	1	1	
2	E02 179 971	INSTALLATION METAL (L)		1	1	1	
3	E02 179 100	AIR FILTER		2	2	2	1PCE/SET
4	E02 179 010	GRILLE		1	1	1	
5	E02 179 000	FRONT PANEL		1	1	1	
6	E02 215 700	DRAIN PAN		1	1	1	
7	E02 179 237	FAN CASING (U)		2	2	2	1PCE/SET
8	E02 179 238	FAN CASING (L)		2	2	2	1PCE/SET
9	E02 179 667	UNION (GAS)		1	1		φ12.7
	E02 138 666	UNION (GAS)				1	φ15.88
10	E02 179 972	INSTALLATION METAL (R)		1	1	1	
11	E02 138 667	UNION (LIQUID)		1	1	1	φ6.35
12	E02 179 231	BACK PANEL (IN)		1	1	1	
13	E02 227 235	NOZZLE		1	1	1	
14	E02 823 620	INDOOR HEAT EXCHANGER		1			
	E02 824 620	INDOOR HEAT EXCHANGER			1	1	
15	E02 227 040	VANE		1	1	1	
⑬	E02 179 142	GRILLE CATCH		3	3	3	3PCS/SET

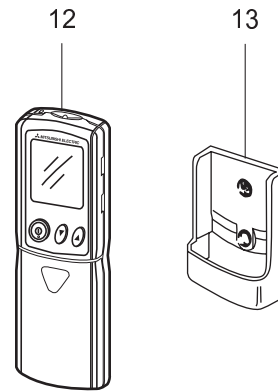
PARTS LIST (non-RoHS compliant)

MCF-GA35VB
MCF-GA50VB
MCF-GA60VB

11-2. INDOOR UNIT ELECTRICAL PARTS



11-3. ACCESSORY AND REMOTE CONTROLLER



11-2. INDOOR UNIT ELECTRICAL PARTS

Part numbers that are circled are not shown in the illustration.

No.	Part No.	Part name	Symbol in Wiring Diagram	Q'ty/unit			Remarks
				MCF-GA35VB -E1	MCF-GA50VB -E1	MCF-GA60VB -E1	
1	E02 179 500	SIROCCO FAN		2	2	2	
2	E02 179 505	FAN MOTOR RUBBER MOUNT		2	2	2	2PCS/SET
3	E02 227 300	INDOOR FAN MOTOR	MF	1			RB4V19-□□
	E02 228 300	INDOOR FAN MOTOR	MF		1		RB4V25-□□
	E02 684 300	INDOOR FAN MOTOR	MF			1	RB4V36-□□
4	E02 824 375	TERMINAL BLOCK	TB2	1	1	1	3P
5	E02 823 375	TERMINAL BLOCK	TB1	1	1	1	3P
6	E02 227 468	RECEIVER P.C. BOARD	DISP/RECEIVER P.C. BOARD	1	1	1	
7	E02 324 307	INDOOR COIL THERMISTOR	RT12	1	1	1	
8	E02 823 452	ELECTRONIC CONTROL P.C. BOARD		1			
	E02 824 452	ELECTRONIC CONTROL P.C. BOARD			1		
	E02 825 452	ELECTRONIC CONTROL P.C. BOARD				1	
9	E02 215 328	SWITCH & ROOM TEMPERATURE THERMISTOR P.C. BOARD	SW/THERMO P.C. BOARD	1	1	1	
⑩	E02 820 385	VARISTOR	NR11	1	1	1	
⑪	E02 127 382	FUSE	F11	1	1	1	3.15A

11-3. ACCESSORY AND REMOTE CONTROLLER

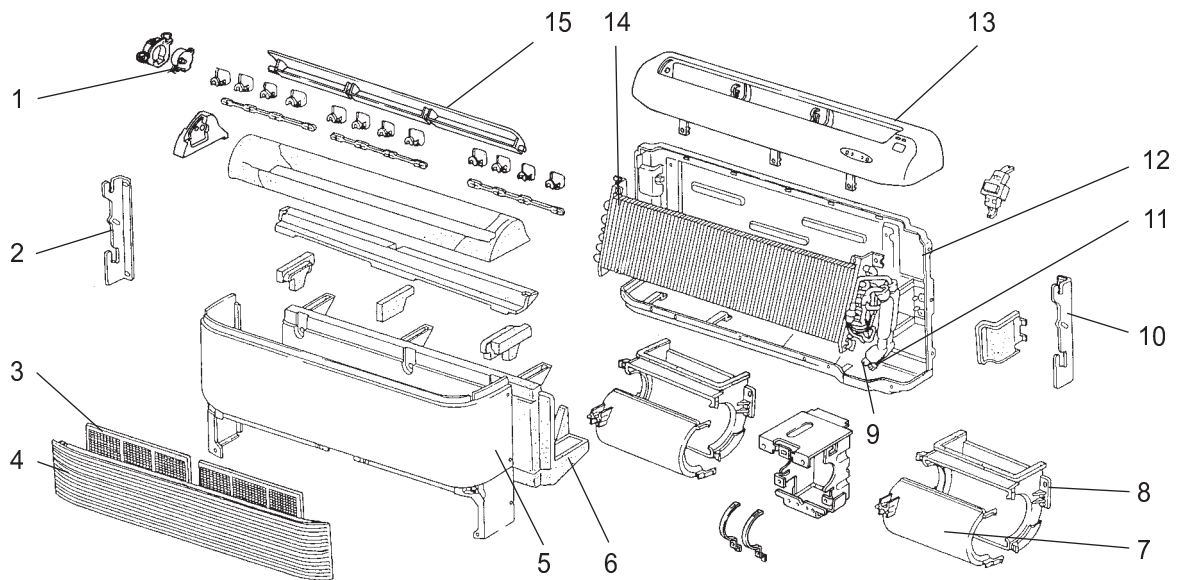
12	E02 823 426	REMOTE CONTROLLER		1	1	1	KM04N
13	E02 527 083	REMOTE CONTROLLER HOLDER		1	1	1	

12

RoHS PARTS LIST (RoHS compliant)

MCF-GA35VB
MCF-GA50VB
MCF-GA60VB

12-1. INDOOR UNIT STRUCTURAL PARTS



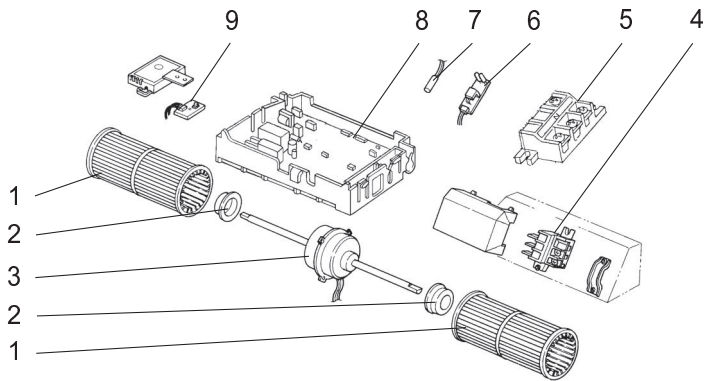
Part number that is circled is not shown in the illustration.

No.	RoHS	Part No.	Part name	Symbol in Wiring Diagram	Q'ty/unit			Remarks
					MCF-GA35VB -E1	MCF-GA50VB -E1	MCF-GA60VB -E1	
1	G	E12 227 303	VANE MOTOR	MV	1	1	1	
2	G	E12 179 971	INSTALLATION METAL (L)		1	1	1	
3	G	E12 179 100	AIR FILTER		2	2	2	1PCE/ SET
4	G	E12 179 010	GRILLE		1	1	1	
5	G	E12 179 000	FRONT PANEL		1	1	1	
6	G	E12 215 700	DRAIN PAN		1	1	1	
7	G	E12 179 237	FAN CASING (U)		2	2	2	1PCE/ SET
8	G	E12 179 238	FAN CASING (L)		2	2	2	1PCE/ SET
9	G	E12 179 667	UNION (GAS)		1	1		φ12.7
	G	E12 138 666	UNION (GAS)				1	φ15.88
10	G	E12 179 972	INSTALLATION METAL (R)		1	1	1	
11	G	E12 138 667	UNION (LIQUID)		1	1	1	φ6.35
12	G	E12 179 231	BACK PANEL (IN)		1	1	1	
13	G	E12 227 235	NOZZLE		1	1	1	
14	G	E12 823 620	INDOOR HEAT EXCHANGER		1			
	G	E12 824 620	INDOOR HEAT EXCHANGER			1		
	G	E12 825 620	INDOOR HEAT EXCHANGER				1	
15	G	E12 227 040	VANE		1	1	1	
⑬	G	E12 179 142	GRILLE CATCH		3	3	3	3PCS/SET

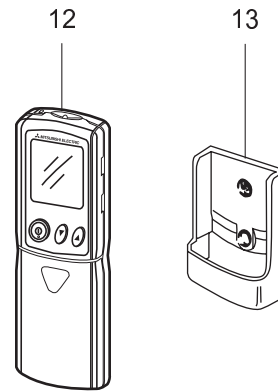
RoHS PARTS LIST (RoHS compliant)

MCF-GA35VB
MCF-GA50VB
MCF-GA60VB

12-2. INDOOR UNIT ELECTRICAL PARTS



12-3. ACCESSORY AND REMOTE CONTROLLER



12-2. INDOOR UNIT ELECTRICAL PARTS

Part numbers that are circled are not shown in the illustration.

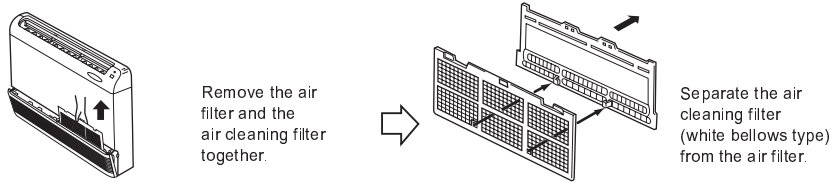
No.	RoHS	Part No.	Part name	Symbol in Wiring Diagram	Q'ty/unit			Remarks
					MCF-GA35VB -E1	MCF-GA50VB -E1	MCF-GA60VB -E1	
1	G	E12 179 500	SIROCCO FAN		2	2	2	1PCE/SET
2	G	E12 179 505	FAN MOTOR RUBBER MOUNT		2	2	2	2PCS/SET
3	G	E12 227 300	INDOOR FAN MOTOR	MF	1			RB4V19-□□
	G	E12 228 300	INDOOR FAN MOTOR	MF		1		RB4V25-□□
	G	E12 684 300	INDOOR FAN MOTOR	MF			1	RB4V36-□□
4	G	E12 824 375	TERMINAL BLOCK	TB2	1	1	1	3P
5	G	E12 823 375	TERMINAL BLOCK	TB1	1	1	1	3P
6	G	E12 227 468	RECEIVER P.C. BOARD	DISP/RECEIVER P.C. BOARD	1	1	1	
7	G	E12 324 307	INDOOR COIL THERMISTOR	RT12	1	1	1	
8	G	E12 823 452	ELECTRONIC CONTROL P.C. BOARD		1			
	G	E12 824 452	ELECTRONIC CONTROL P.C. BOARD			1		
	G	E12 825 452	ELECTRONIC CONTROL P.C. BOARD				1	
9	G	E12 215 328	SWITCH & ROOM TEMPERATURE THERMISTOR P.C. BOARD	SW/THERMO P.C. BOARD	1	1	1	
⑩	G	E12 820 385	VARISTOR	NR11	1	1	1	
⑪	G	E12 A49 382	FUSE	F11	1	1	1	T3.15AL250V

12-3. ACCESSORY AND REMOTE CONTROLLER

12	G	E12 823 426	REMOTE CONTROLLER		1	1	1	KM04N
13	G	E12 527 083	REMOTE CONTROLLER HOLDER		1	1	1	

13-1. AIR CLEANING FILTER

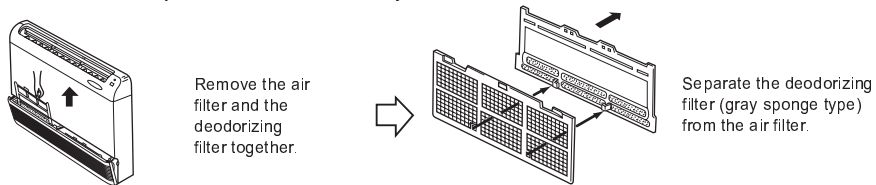
- If the air cleaning filter is clogged, it may lower the unit's capacity or cause condensation at the air outlet.
- The air cleaning filter is disposable. The standard usable term is about 4 months. However, if the color of the filter turns to dark brown, replace soon.



Models	Part No.
MCF-GA35VB MCF-GA50VB MCF-GA60VB	MAC - 1200 FT

13-2. DEODORIZING FILTER

- Clean the filter every two weeks. When it becomes too dirt, clean it more often.
- Replace the filter with a new one when its color can not be restored even after washing or when the filter becomes dark.
- Standard interval for the filter replacement is about 1 year.



Models	Part No.
MCF-GA35VB MCF-GA50VB MCF-GA60VB	MAC - 1700 DF



HEAD OFFICE: TOKYO BLDG., 2-7-3, MARUNOUCHI, CHIYODA-KU, TOKYO 100-8310, JAPAN

© Copyright 2004 MITSUBISHI ELECTRIC ENGINEERING CO.,LTD
Distributed in May 2006. No.OB382 REVISED EDITION-A 6
Distributed in Dec. 2004. No.OB382 6
Made in Japan

New publication, effective May 2006
Specifications subject to change without notice.