

# SERVICE MANUAL

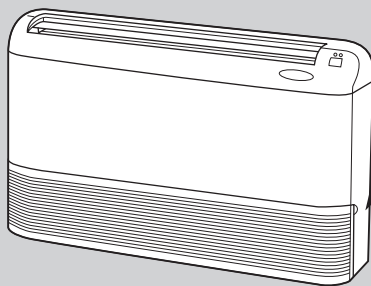
## Wireless type Models

**MCFH-GA35VB-E1**(WH)

**MCFH-GA50VB-E1**(WH)

**MCFH-GA60VB-E1**(WH)

(When installed on the floor)



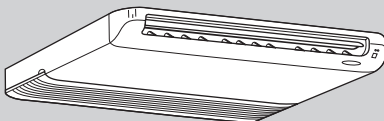
Indication of  
model name

MCFH-GA35VB-E1

MCFH-GA50VB-E1

MCFH-GA60VB-E1

(When installed on the ceiling)



## CONTENTS

1. TECHNICAL CHANGES .....	2
2. PART NAMES AND FUNCTIONS .....	2
3. SPECIFICATION .....	4
4. NOISE CRITERIA CURVES .....	5
5. OUTLINES AND DIMENSIONS .....	6
6. WIRING DIAGRAM .....	7
7. REFRIGERANT SYSTEM DIAGRAM .....	8
8. SERVICE FUNCTIONS .....	9
9. TROUBLESHOOTING .....	11
10. DISASSEMBLY INSTRUCTIONS .....	19
11. PARTS LIST .....	21
12. OPTIONAL PARTS .....	23

### NOTE:

- This manual describes technical data of indoor units
- As for outdoor units MUCFH-GA35VB/GA50VB/GA60VB-E1, refer to the service manual OB381.
- As for outdoor units MXZ-A14/A18/A26/A32WV-E1, refer to the service manual OB319 REVISED EDITION-A.



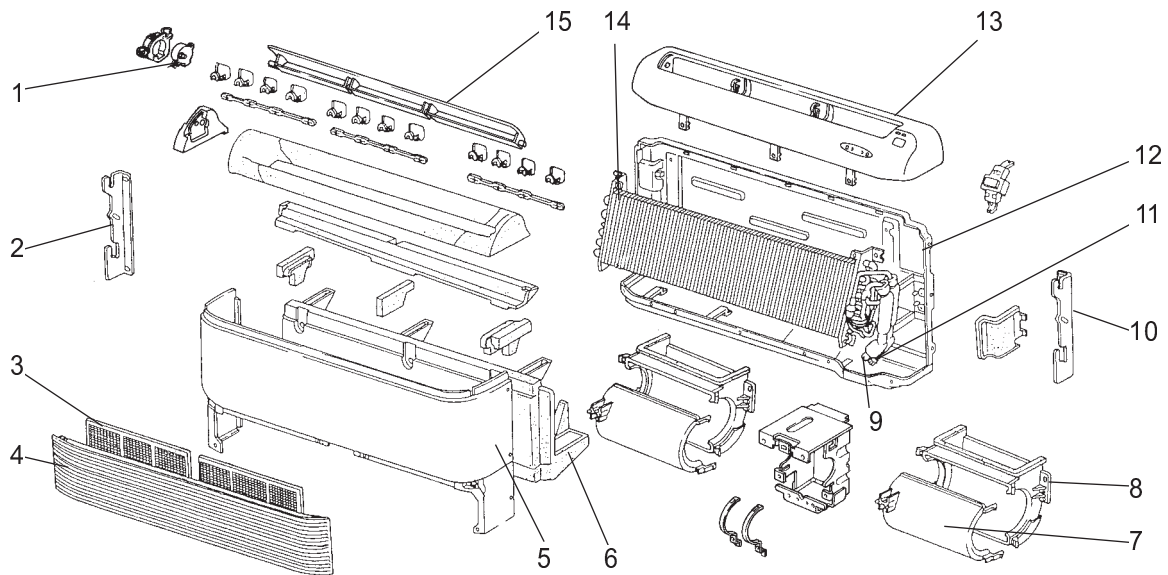
MCFH-GA35VB -E1 (WH)

MCFH-GA50VB -E1 (WH)

MCFH-GA60VB -E1 (WH)

## 11-1. INDOOR UNIT

## STRUCTURAL PARTS

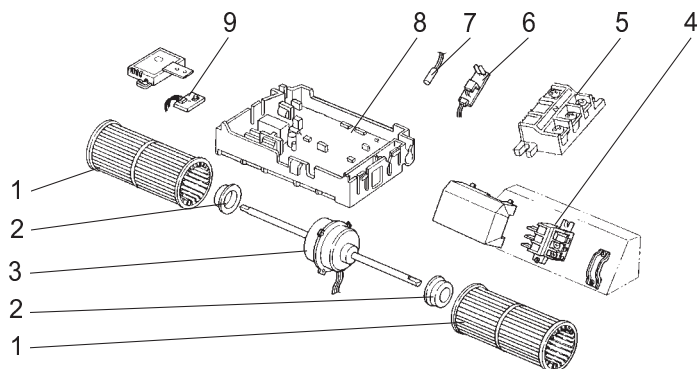


Part number that is circled is not shown in the illustration.

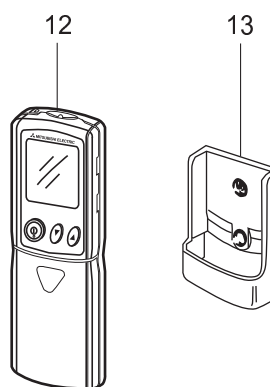
No.	Part No.	Part name	Symbol in Wiring Diagram	Q'ty/unit			Remarks
				MCFH-GA35VB -E1 (WH)	MCFH-GA50VB -E1 (WH)	MCFH-GA60VB -E1 (WH)	
1	E02 227 303	VANE MOTOR	MV	1	1	1	
2	E02 179 971	INSTALLATION METAL (L)		1	1	1	
3	E02 179 100	AIR FILTER		2	2	2	
4	E02 179 010	GRILLE (WH)		1	1	1	
5	E02 179 000	FRONT PANEL (WH)		1	1	1	
6	E02 215 700	DRAIN PAN		1	1	1	
7	E02 179 237	FAN CASING (U)		2	2	2	
8	E02 179 238	FAN CASING (L)		2	2	2	
9	E02 179 667	UNION (GAS)		1	1		φ12.7
	E02 138 666	UNION (GAS)				1	φ15.88
10	E02 179 972	INSTALLATION METAL (R)		1	1	1	
11	E02 138 667	UNION (LIQUID)		1	1	1	φ6.35
12	E02 179 231	BACK PANEL (IN)		1	1	1	
13	E02 227 235	NOZZLE (WH)		1	1	1	
14	E02 823 620	INDOOR HEAT EXCHANGER		1			
	E02 824 620	INDOOR HEAT EXCHANGER			1	1	
15	E02 227 040	VANE (WH)		1	1	1	
⑩	E02 179 142	GRILLE CATCH (WH)		3	3	3	3PCS/SET

MCFH-GA35VB -E1 (WH)  
MCFH-GA50VB -E1 (WH)  
MCFH-GA60VB -E1 (WH)

### 11-2. INDOOR UNIT ELECTRICAL PARTS



### 11-3. ACCESSORY AND REMOTE CONTROLLER



### 11-2. INDOOR UNIT ELECTRICAL PARTS

Part numbers that are circled are not shown in the illustration.

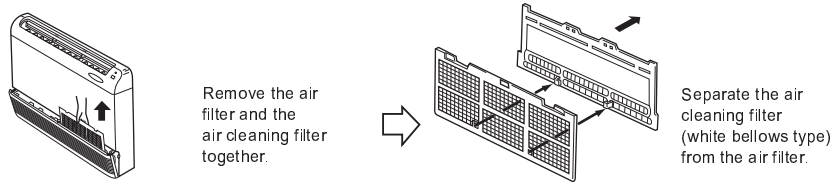
No.	Part No.	Part name	Symbol in Wiring Diagram	Q'ty/unit			Remarks
				MCFH-GA35VB -E1 (WH)	MCFH-GA50VB -E1 (WH)	MCFH-GA60VB -E1 (WH)	
1	E02 179 500	SIROCCO FAN		2	2	2	
2	E02 179 505	FAN MOTOR RUBBER MOUNT		2	2	2	2PCS/SET
3	E02 228 300	INDOOR FAN MOTOR	MF	1			RB4V25-□□
	E02 229 300	INDOOR FAN MOTOR	MF		1		RB4V36-□□
	E02 684 300	INDOOR FAN MOTOR	MF			1	RB4V36-□□
4	E02 826 375	TERMINAL BLOCK	TB2	1	1	1	3P
5	E02 823 375	TERMINAL BLOCK	TB1	1	1	1	3P
6	E02 227 468	RECEIVER P.C. BOARD	DISP/RECEIVER P.C. BOARD	1	1	1	
8	E02 327 307	INDOOR COIL THERMISTOR	RT12	1	1	1	
	E02 826 452	ELECTRONIC CONTROL P.C. BOARD		1			
	E02 827 452	ELECTRONIC CONTROL P.C. BOARD			1		
	E02 828 452	ELECTRONIC CONTROL P.C. BOARD				1	
9	E02 215 328	SWITCH & ROOM TEMPERATURE THERMISTOR P.C. BOARD	SW/THERMO P.C. BOARD	1	1	1	
⑩	E02 820 385	VARIATOR	NR11	1	1	1	
⑪	E02 127 382	FUSE	F11	1	1	1	3.15A

### 11-3. ACCESSORY AND REMOTE CONTROLLER

12	E02 826 426	REMOTE CONTROLLER		1	1	1	KM04M
13	E02 527 083	REMOTE CONTROLLER HOLDER		1	1	1	

### 12-1. AIR CLEANING FILTER

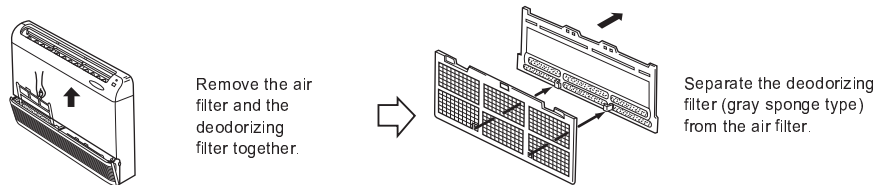
- If the air cleaning filter is clogged, it may lower the unit's capacity or cause condensation at the air outlet .
- The air cleaning filter is disposable . The standard usable term is about 4 months . However , if the color of the filter turns to dark brown , replace soon .



Models	Part No.
<b>MCFH-GA35VB</b> -[E1]	MAC - 1200 FT
<b>MCFH-GA50VB</b> -[E1]	
<b>MCFH-GA60VB</b> -[E1]	

### 12-2. DEODORIZING FILTER

- Clean the filter every two weeks . When it becomes too dirt , clean it more often .
- Replace the filter with a new one when its color can not be restored even after washing or when the filter becomes dark.
- Standard interval for the filter replacement is about 1 year .



Models	Part No.
<b>MCFH-GA35VB</b> -[E1]	MAC - 1700 DF
<b>MCFH-GA50VB</b> -[E1]	
<b>MCFH-GA60VB</b> -[E1]	



HEAD OFFICE: MITSUBISHI DENKI BLDG., 2-2-3, MARUNOUCHI, CHIYODA-KU, TOKYO100-8310, JAPAN

© Copyright 2005 MITSUBISHI ELECTRIC ENGINEERING CO.,LTD  
Distributed in Jan. 2005. No.OB380 6  
Made in Japan

New publication, effective Jan. 2005  
Specifications subject to change without notice.