

Revision C:

MUH-GA25VB -E3 has been added.

Please void OB387 REVISED EDITION-B.

OUTDOOR UNIT SERVICE MANUAL



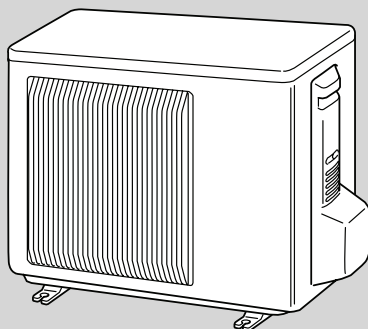
**No. OB387
REVISED EDITION-C**

Wireless type Models

MUH-GA20VB-E1
MUH-GA20VB-E2
MUH-GA25VB-E1
MUH-GA25VB-E2
MUH-GA25VB-E3
MUH-GA35VB-E1
MUH-GA35VB-E3

Indoor unit service manual

MSC-GA·VB Series (OB385)
MSC-CA·VB Series (OB393)
MSC-CB·VB Series (OB439)



MUH-GA20VB
 MUH-GA25VB
 MUH-GA35VB

CONTENTS

1. TECHNICAL CHANGES	2
2. PART NAMES AND FUNCTIONS	3
3. SPECIFICATION	3
4. NOISE CRITERIA CURVES	5
5. OUTLINES AND DIMENSIONS	6
6. WIRING DIAGRAM	7
7. REFRIGERANT SYSTEM DIAGRAM	8
8. PERFORMANCE CURVES	9
9. ACTUATOR CONTROL	19
10. SERVICE FUNCTIONS	20
11. TROUBLESHOOTING	20
12. DISASSEMBLY INSTRUCTIONS	27
13. PARTS LIST	30
14. RoHS PARTS LIST	32

NOTE:

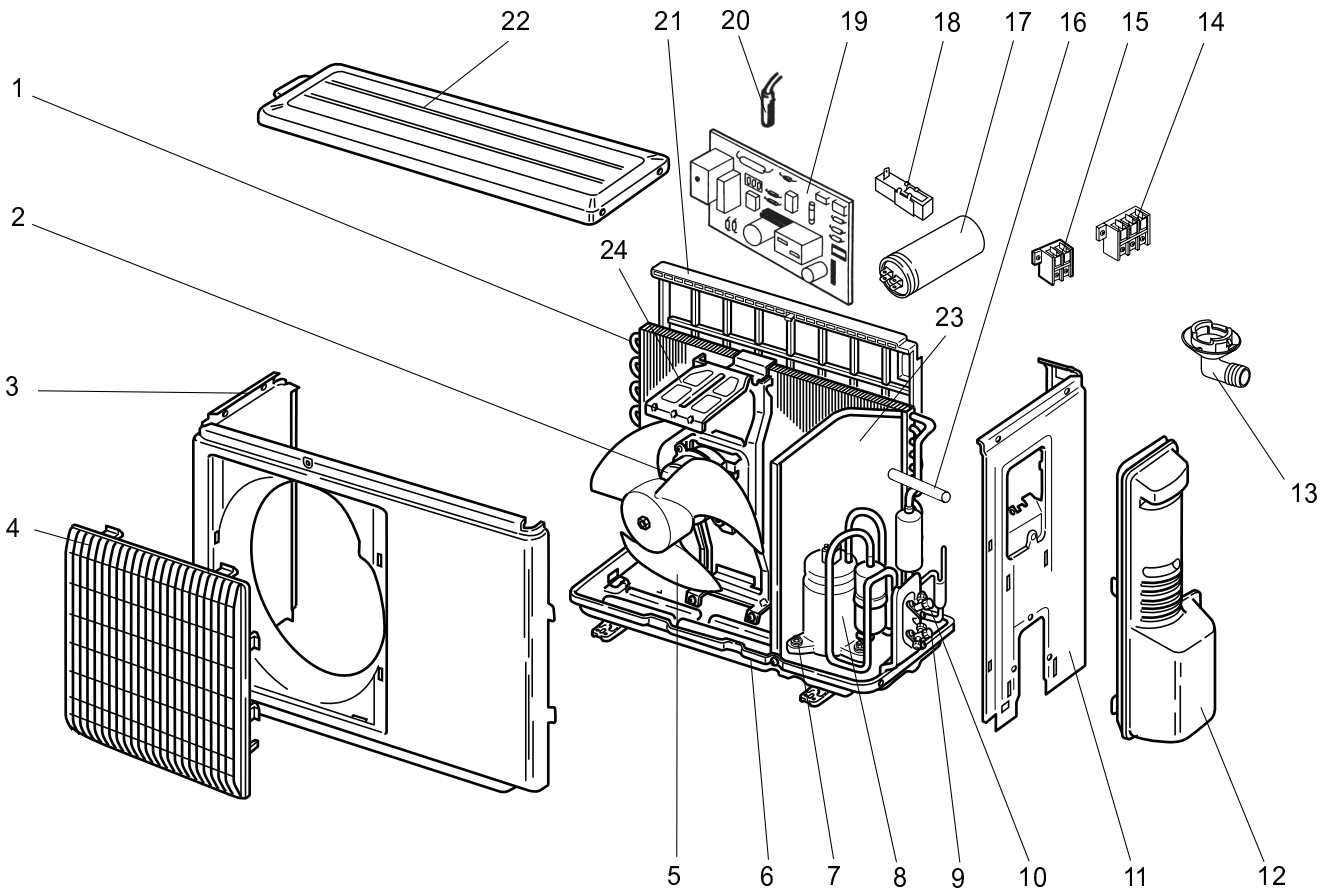
- This service manual describes technical data of outdoor units.
- RoHS compliant products have <G> mark on the spec name plate.
- For servicing of RoHS compliant products, refer to the RoHS Parts List.



MUH-GA20VB MUH-GA25VB MUH-GA35VB

13-1. OUTDOOR UNIT

STRUCTURAL PARTS, ELECTRICAL PARTS AND FUNCTIONAL PARTS



This figure shows MUH-GA20VB.

PARTS LIST (non-RoHS compliant)

MUH-GA20VB MUH-GA25VB MUH-GA35VB

13-1. OUTDOOR UNIT

STRUCTURAL PARTS, ELECTRICAL PARTS AND FUNCTIONAL PARTS

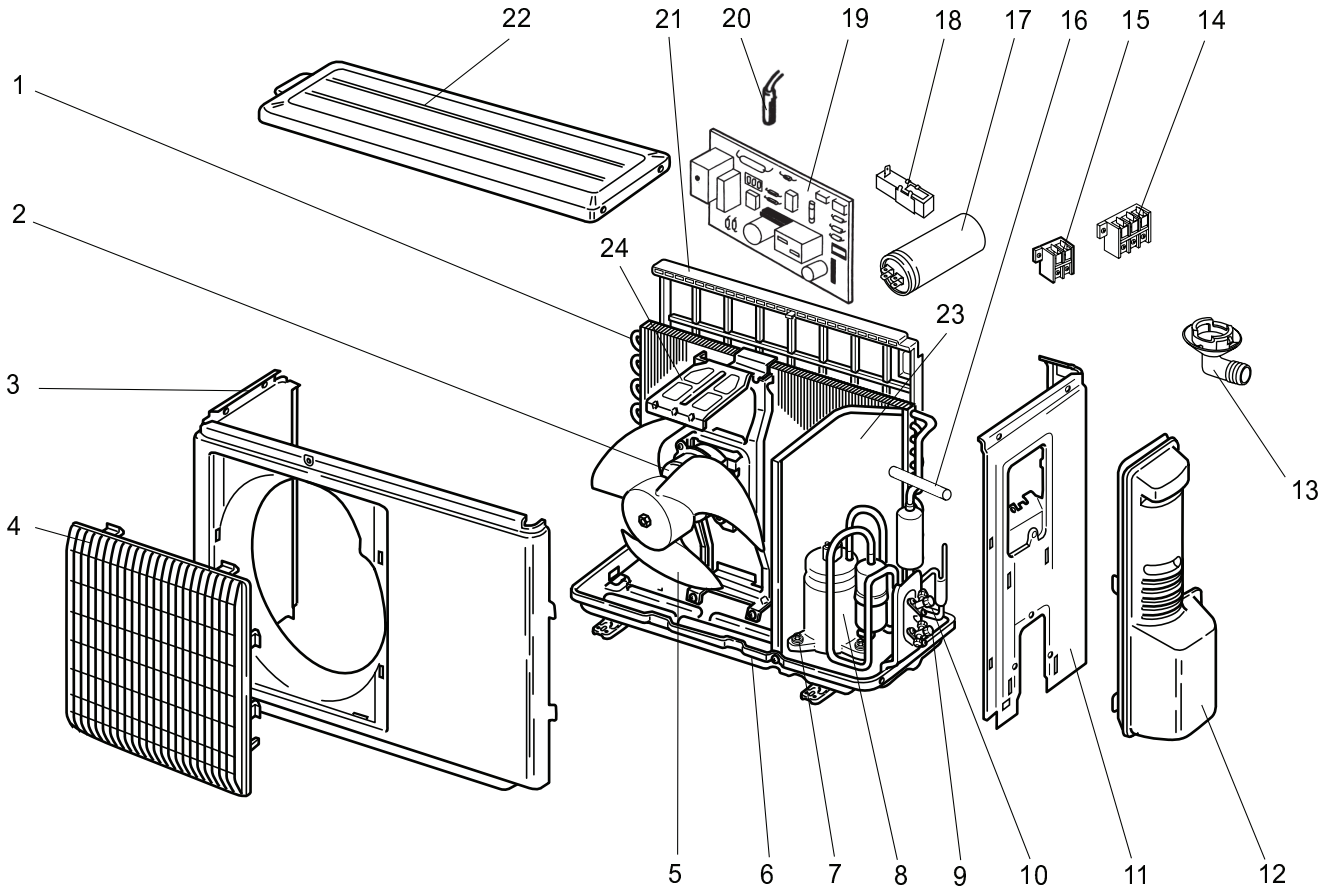
Part numbers that are circled are not shown in the illustration.

No.	Part No.	Part name	Symbol in Wiring Diagram	Q'ty/unit			Remarks
				MUH-GA20VB -	MUH-GA25VB -	MUH-GA35VB -	
				E1	E1	E1	
1	E02 904 630	OUTDOOR HEAT EXCHANGER		1			
	E02 905 630	OUTDOOR HEAT EXCHANGER			1		
	E02 906 630	OUTDOOR HEAT EXCHANGER				1	
2	E02 904 301	OUTDOOR FAN MOTOR	MF	1			RA6V21-□□
	E02 905 301	OUTDOOR FAN MOTOR	MF		1	1	RA6V33-□□
3	E02 899 232	CABINET		1			
	E02 903 232	CABINET			1	1	
4	E02 927 521	GRILLE		1	1	1	
5	E02 665 501	PROPELLER		1	1	1	
6	E02 899 290	BASE		1			
	E02 905 290	BASE			1	1	
7	E02 075 506	COMPRESSOR RUBBER SET		3	3	3	3RUBBERS/SET
8	E02 742 900	COMPRESSOR	MC	1			RN092VHSHT
	E02 753 900	COMPRESSOR	MC		1		RN104VHSHT
	E02 754 900	COMPRESSOR	MC			1	RN135VHSHT
9	E02 904 661	STOP VALVE (GAS)		1	1	1	ø9.52
10	E02 904 662	STOP VALVE (LIQUID)		1	1	1	ø6.35
11	E02 901 233	BACK PANEL		1			
	E02 927 233	BACK PANEL			1	1	
12	E02 927 245	SERVICE PANEL		1	1	1	
13	E02 838 704	DRAIN SOCKET		1	1	1	
14	E02 817 374	TERMINAL BLOCK	TB1	1	1	1	3P
15	E02 836 374	TERMINAL BLOCK	TB2	1	1	1	2P
16	E02 927 961	4-WAY VALVE		1	1		
	E02 931 961	4-WAY VALVE				1	
17	E02 742 353	COMPRESSOR CAPACITOR	C1	1			20 μF / 440 V AC
	E02 665 353	COMPRESSOR CAPACITOR	C1		1		25 μF / 440 V AC
	E02 900 353	COMPRESSOR CAPACITOR	C1			1	30 μF / 440 V AC
18	E02 895 383	SURGE ABSORBER	DSAR	1	1	1	
19	E02 904 451	DEICER P.C. BOARD		1			
	E02 905 451	DEICER P.C. BOARD			1	1	
20	E02 906 310	DEFROST THERMISTOR	RT61	1	1	1	
21	E02 899 523	CONDENSER NET		1			
	E02 838 523	CONDENSER NET			1	1	
22	E02 927 297	TOP PANEL		1	1	1	
23	E02 899 293	SEPARATOR		1	1	1	
24	E02 899 515	MOTOR SUPPORT		1	1	1	
25	E02 904 490	R. V. COIL	21S4	1	1		
	E02 906 490	R. V. COIL	21S4			1	
26	E02 095 382	FUSE	F61	1	1	1	T2AL250V
27	E02 820 385	VARIATOR	NR61	1	1	1	
28	E02 891 642	CHECK VALVE		1	1	1	
29	E02 408 936	CAPILLARY TUBE		1			ø3.0 × ø1.4 × 700
30	E02 156 936	CAPILLARY TUBE		1		1	ø3.0 × ø1.4 × 500
31	E02 024 936	CAPILLARY TUBE			1		ø3.0 × ø1.4 × 1000
32	E02 339 936	CAPILLARY TUBE			1		ø3.0 × ø1.4 × 600
33	E02 282 936	CAPILLARY TUBE				1	ø3.0 × ø1.4 × 300

MUH-GA20VB MUH-GA25VB MUH-GA35VB

14-1. OUTDOOR UNIT

STRUCTURAL PARTS, ELECTRICAL PARTS AND FUNCTIONAL PARTS



This figure shows MUH-GA20VB.

RoHS PARTS LIST (RoHS compliant)

MUH-GA20VB MUH-GA25VB MUH-GA35VB

14-1. OUTDOOR UNIT STRUCTURAL PARTS, ELECTRICAL PARTS AND FUNCTIONAL PARTS

Part numbers that are circled are not shown in the illustration.

No.	RoHS	Part No.	Part name	Symbol in Wiring Diagram	Q'ty/unit						Remarks	
					MUH-GA20VB-		MUH-GA25VB-			MUH-GA35VB-		
					E1	E2	E1	E2	E3	E1		E3
1	G	E12 904 630	OUTDOOR HEAT EXCHANGER		1	1						
	G	E12 905 630	OUTDOOR HEAT EXCHANGER				1	1				
	G	E12 906 630	OUTDOOR HEAT EXCHANGER							1		
	G	E12 A86 630	OUTDOOR HEAT EXCHANGER						1		1	
2	G	E12 904 301	OUTDOOR FAN MOTOR	MF	1	1						RA6V21- □□
	G	E12 905 301	OUTDOOR FAN MOTOR	MF			1	1	1	1	1	RA6V33- □□
3	G	E12 899 232	CABINET		1	1						
	G	E12 903 232	CABINET				1	1	1	1	1	
4	G	E12 927 521	GRILLE		1	1	1	1	1	1	1	
5	G	E12 665 501	PROPELLER		1	1	1	1	1	1	1	
6	G	E12 899 290	BASE		1							
	G	E12 905 290	BASE				1			1	1	
	G	E12 B14 290	BASE			1						
	G	E12 D04 290	BASE				1	1				
7	G	E12 075 506	COMPRESSOR RUBBER SET		3		3			3	3	3RUBBERS/SET
	G	E12 065 506	COMPRESSOR RUBBER SET			3		3	3			3RUBBERS/SET
8	G	E12 742 900	COMPRESSOR	MC	1							RN092VHSHT
	G	E12 753 900	COMPRESSOR	MC			1					RN104VHSHT
	G	E12 754 900	COMPRESSOR	MC						1	1	RN135VHSHT
	G	E12 B14 900	COMPRESSOR	MC		1						KN092VDMHC
	G	E12 B17 900	COMPRESSOR	MC				1	1			KN104VTMHC
9	G	E12 904 661	STOP VALVE (GAS)		1	1	1	1	1	1	1	ø9.52
10	G	E12 904 662	STOP VALVE (LIQUID)		1		1			1		ø6.35
	G	E12 B16 662	STOP VALVE (LIQUID)			1		1	1		1	ø6.35
11	G	E12 901 233	BACK PANEL		1	1						
	G	E12 927 233	BACK PANEL				1	1	1	1	1	
12	G	E12 927 245	SERVICE PANEL		1	1	1	1	1	1	1	
13	G	E12 838 704	DRAIN SOCKET		1	1	1	1	1	1	1	
14	G	E12 817 374	TERMINAL BLOCK	TB1	1	1	1	1	1	1	1	3P
15	G	E12 836 374	TERMINAL BLOCK	TB2	1	1	1	1	1	1	1	2P
16	G	E12 927 961	4-WAY VALVE		1	1	1	1	1			
	G	E12 931 961	4-WAY VALVE							1	1	
17	G	E12 742 353	COMPRESSOR CAPACITOR	C1	1							20μF /440 V AC
	G	E12 665 353	COMPRESSOR CAPACITOR	C1		1	1	1				25μF /440 V AC
	G	E12 900 353	COMPRESSOR CAPACITOR	C1						1	1	30μF /440 V AC
18	G	E12 895 383	SURGE ABSORBER	DSAR	1	1	1	1	1	1	1	
19	G	E12 904 451	DEICER P.C. BOARD		1					1	1	
	G	E12 905 451	DEICER P.C. BOARD				1					
	G	E12 B16 451	DEICER P.C. BOARD			1						
	G	E12 B17 451	DEICER P.C. BOARD					1	1			
20	G	E12 906 310	DEFROST THERMISTOR	RT61	1	1	1	1	1	1	1	
21	G	E12 899 523	CONDENSER NET		1	1						
	G	E12 838 523	CONDENSER NET				1	1		1		
	G	E12 929 523	CONDENSER NET					1			1	
22	G	E12 927 297	TOP PANEL		1	1	1	1	1	1	1	
23	G	E12 899 293	SEPARATOR		1	1	1	1		1		
	G	E12 900 293	SEPARATOR						1		1	
24	G	E12 899 515	MOTOR SUPPORT		1	1	1	1		1		
	G	E12 900 515	MOTOR SUPPORT						1		1	
25	G	E12 904 490	R. V. COIL	21S4	1	1	1	1				
	G	E12 906 490	R. V. COIL	21S4						1	1	
26	G	E12 095 382	FUSE	F61	1	1	1	1	1	1	1	T2AL250V
27	G	E12 820 385	VARISTOR	NR61	1	1	1	1	1	1	1	
28	G	E12 891 642	CHECK VALVE		1	1	1	1	1	1	1	
29	G	E12 408 936	CAPILLARY TUBE		1							ø3.0 × ø1.4 × 700
	G	E12 156 936	CAPILLARY TUBE		1					1		ø3.0 × ø1.4 × 500
	G	E12 024 936	CAPILLARY TUBE				1					ø3.0 × ø1.4 × 1000
	G	E12 339 936	CAPILLARY TUBE				1					ø3.0 × ø1.4 × 600
	G	E12 282 936	CAPILLARY TUBE			1				1		ø3.0 × ø1.4 × 300
	G	E12 B14 936	CAPILLARY TUBE			1						ø3.0 × ø1.4 × 900
	G	E12 B17 936	CAPILLARY TUBE					1				ø3.0 × ø1.6 × 1500
	G	E12 139 936	CAPILLARY TUBE					1				ø3.0 × ø1.6 × 750
	G	E12 A86 936	CAPILLARY TUBE								1	ø3.0 × ø1.4 × 350
	G	E12 642 936	CAPILLARY TUBE								1	ø3.0 × ø1.4 × 400
	G	E12 735 936	CAPILLARY TUBE						2		2	ø3.0 × ø1.8 × 600
	G	E12 156 936	CAPILLARY TUBE						1			ø3.0 × ø1.4 × 500
	G	E12 024 936	CAPILLARY TUBE						1			ø3.0 × ø1.4 × 1000



HEAD OFFICE: TOKYO BLDG., 2-7-3, MARUNOUCHI, CHIYODA-KU, TOKYO100-8310, JAPAN

© Copyright 2005 MITSUBISHI ELECTRIC ENGINEERING CO.,LTD

Distributed in Apr. 2008. No.OB387 REVISED EDITION-C 6

Distributed in May 2007. No.OB387 REVISED EDITION-B 6

Distributed in May 2006. No.OB387 REVISED EDITION-A 6

Distributed in Feb. 2005. No.OB387 6

Made in Japan

New publication, effective Apr. 2008
Specifications subject to change without notice.