

Revision D:

• MU-GA20VB-**E3** and MU-GA35VB-**E3** have been added.

Please void OB386 REVISED EDITION-C.

OUTDOOR UNIT SERVICE MANUAL



**No. OB386
REVISED EDITION-D**

Models

MU-GA20VB-E1****

MU-GA20VB-E2****

MU-GA20VB-E3****

MU-GA25VB-E1****

MU-GA25VB-E2****

MU-GA35VB-E1****

MU-GA35VB-E2****

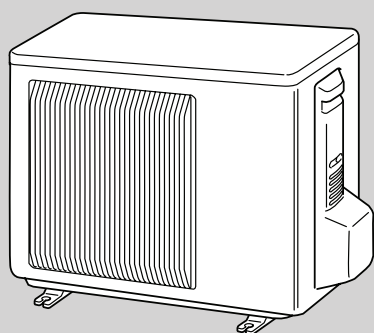
MU-GA35VB-E3****

Indoor unit service manual

MSC-GA-VB Series (OB385)

MSC-CA-VB Series (OB393)

MSC-GE-VB Series (OBH529)



**MU-GA20VB
MU-GA25VB
MU-GA35VB**

CONTENTS

1. TECHNICAL CHANGES	2
2. PART NAMES AND FUNCTIONS	3
3. SPECIFICATION	3
4. NOISE CRITERIA CURVES	5
5. OUTLINES AND DIMENSIONS	6
6. WIRING DIAGRAM	6
7. REFRIGERANT SYSTEM DIAGRAM	8
8. PERFORMANCE CURVES	11
9. TROUBLESHOOTING	19
10. DISASSEMBLY INSTRUCTIONS	22
11. PARTS LIST	24
12. RoHS PARTS LIST	26

NOTE:

- This service manual describes technical data of outdoor units.
 - RoHS compliant products have <G> mark on the spec name plate.
- For servicing of RoHS compliant products, refer to the RoHS Parts List.

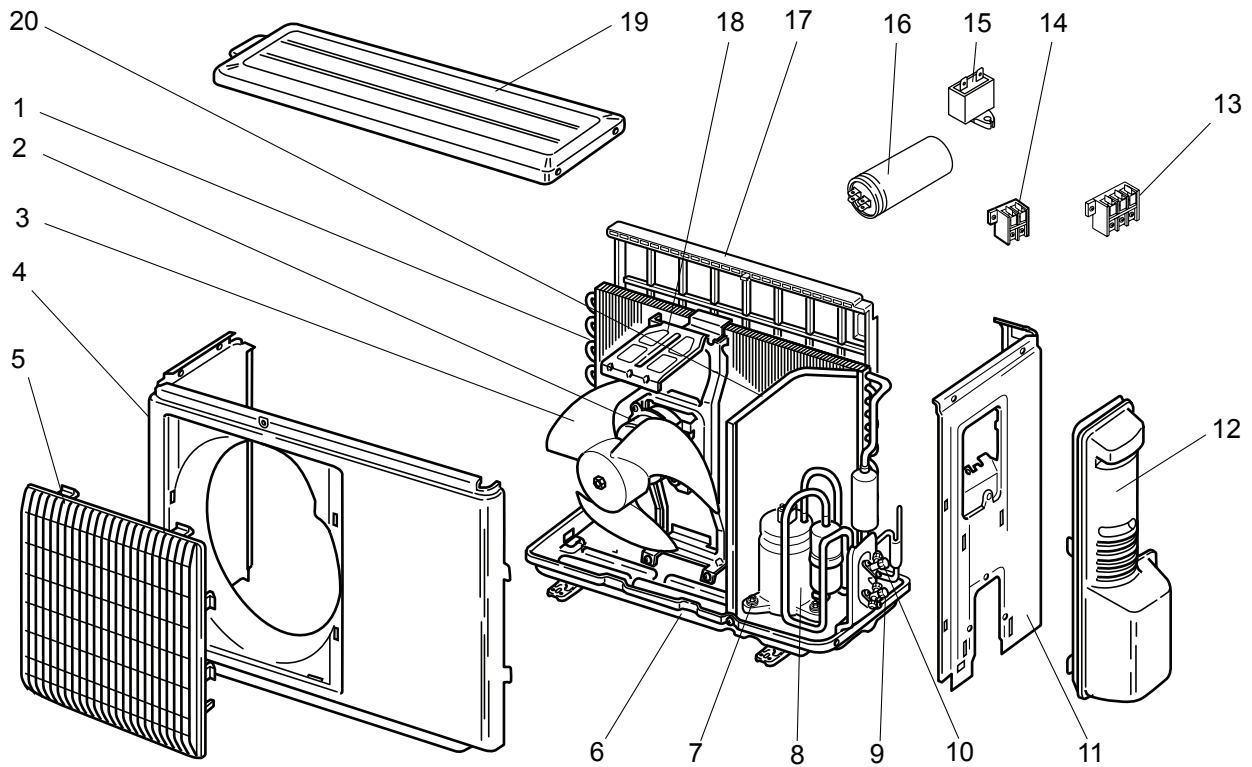


MU-GA20VB

MU-GA25VB

MU-GA35VB

11-1. OUTDOOR UNIT STRUCTURAL PARTS, ELECTRICAL PARTS AND FUNCTIONAL PARTS



PARTS LIST (non-RoHS compliant)

MU-GA20VB MU-GA25VB MU-GA35VB

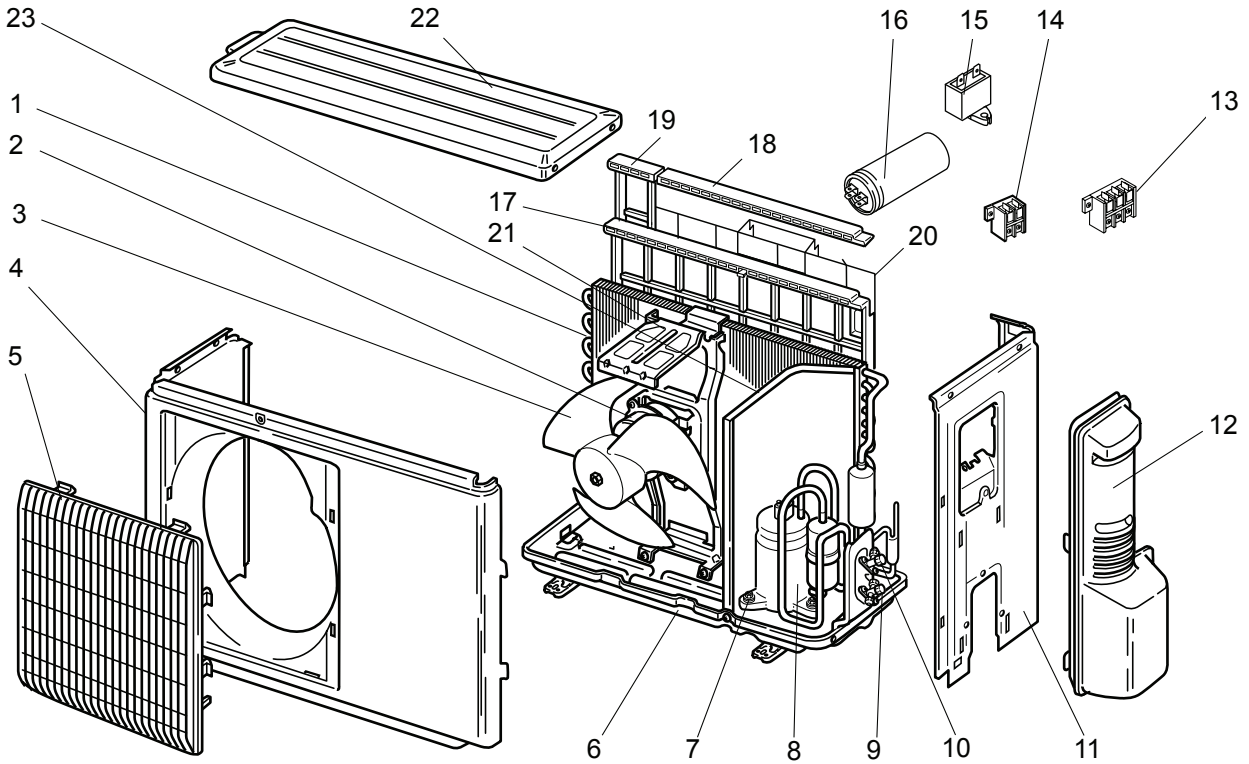
11-1. OUTDOOR UNIT STRUCTURAL PARTS, ELECTRICAL PARTS AND FUNCTIONAL PARTS



No.	Part No.	Part name	Symbol in Wiring Diagram	Q'ty/unit			Remarks
				MU-GA20VB-[E1]	MU-GA25VB-[E1]	MU-GA35VB-[E1]	
1	E02 901 630	OUTDOOR HEAT EXCHANGER		1	1		
	E02 903 630	OUTDOOR HEAT EXCHANGER				1	
2	E02 899 301	OUTDOOR FAN MOTOR	MF	1	1		RA6V21-□□
	E02 900 301	OUTDOOR FAN MOTOR	MF			1	RA6V33-□□
3	E02 665 501	PROPELLER		1	1	1	
4	E02 899 232	CABINET		1	1		
	E02 903 232	CABINET				1	
5	E02 927 521	GRILLE(OUT)		1	1	1	
6	E02 899 290	BASE		1	1		
	E02 903 290	BASE				1	
7	E02 075 506	COMPRESSOR RUBBER SET		3	3		3RUBBERS/SET
	E02 781 506	COMPRESSOR RUBBER SET				3	3RUBBERS/SET
8	E02 742 900	COMPRESSOR	MC	1	1		RN092VHSHT
	E02 903 900	COMPRESSOR	MC			1	5PS132DAH01
9	E02 901 661	STOP VALVE(GAS)		1	1	1	φ9.52
	E02 901 662	STOP VALVE(LIQUID)		1	1	1	φ6.35
11	E02 901 233	BACK PANEL		1	1		
	E02 927 233	BACK PANEL				1	
12	E02 927 245	SERVICE PANEL		1	1	1	
13	E02 817 374	TERMINAL BLOCK	TB1	1	1	1	3P
14	E02 832 374	TERMINAL BLOCK	TB2	1	1	1	2P
15	E02 899 351	OUTDOOR FAN CAPACITOR	C2	1	1		1.8μF/440VAC
	E02 900 351	OUTDOOR FAN CAPACITOR	C2			1	2.0μF/440VAC
16	E02 742 353	COMPRESSOR CAPACITOR	C1	1	1		20μF/440VAC
	E02 665 353	COMPRESSOR CAPACITOR	C1			1	25μF/440VAC
17	E02 899 523	CONDENSER NET		1	1		
	E02 838 523	CONDENSER NET				1	
18	E02 899 515	MOTOR SUPPORT		1	1	1	
19	E02 927 297	TOP PANEL		1	1	1	
20	E02 899 293	SEPARATOR		1	1	1	
21	E02 735 382	FUSE	F			1	T20AL250V
22	E02 735 241	FUSE HOLDER				1	
23	E02 466 340	COMPRESSOR CONTACTOR	52C	1	1	1	
24	E02 895 383	SURGE ABSORBER	DSAR	1	1	1	
25	E02 408 936	CAPILLARY TUBE		1	1		φ3.0 x φ1.4 x 700
	E02 637 936	CAPILLARY TUBE				1	φ3.0 x φ1.4 x 450
26	E02 903 330	OVERLOAD RELAY	51C			1	

MU-GA20VB
 MU-GA25VB
 MU-GA35VB

12-1. OUTDOOR UNIT STRUCTURAL PARTS, ELECTRICAL PARTS AND FUNCTIONAL PARTS



RoHS PARTS LIST (RoHS compliant)

MU-GA20VB MU-GA25VB MU-GA35VB 12-1. OUTDOOR UNIT STRUCTURAL PARTS, ELECTRICAL PARTS AND FUNCTIONAL PARTS

No.	RoHS	Part No.	Part name	Symbol in Wiring Diagram	Q'ty/unit						Remarks	
					MU- GA20VB- E1	MU- GA20VB- E2	MU- GA20VB- E3	MU- GA25VB- E1	MU- GA25VB- E2	MU- GA35VB- E1		MU- GA35VB- E2
1	G	E12 901 630	OUTDOOR HEAT EXCHANGER		1	1		1	1			
	G	E12 903 630	OUTDOOR HEAT EXCHANGER						1			
	G	E12 A83 630	OUTDOOR HEAT EXCHANGER							1		
	G	E12 E92 630	OUTDOOR HEAT EXCHANGER			1						
	G	E12 E93 630	OUTDOOR HEAT EXCHANGER								1	
2	G	E12 899 301	OUTDOOR FAN MOTOR	MF	1	1	1	1	1			RA6V21-□□
	G	E12 900 301	OUTDOOR FAN MOTOR	MF					1	1	1	RA6V33-□□
3	G	E12 665 501	PROPELLER		1	1	1	1	1	1	1	
4	G	E12 899 232	CABINET		1	1	1	1	1			
	G	E12 903 232	CABINET						1			
	G	E12 A83 232	CABINET							1	1	
5	G	E12 927 521	GRILLE(OUT)		1	1	1	1	1	1	1	
6	G	E12 899 290	BASE		1			1				
	G	E12 903 290	BASE						1	1		
	G	E12 A89 290	BASE			1			1			
	G	E12 B14 290	BASE				1					
	G	E12 E93 290	BASE								1	
7	G	E12 075 506	COMPRESSOR RUBBER SET		3			3				3RUBBERS/SET
	G	E12 781 506	COMPRESSOR RUBBER SET						3	3	3	3RUBBERS/SET
	G	E12 065 506	COMPRESSOR RUBBER SET			3	3	3				3RUBBERS/SET
8	G	E12 742 900	COMPRESSOR	MC	1			1				RN092VHSHT
	G	E12 903 900	COMPRESSOR	MC					1	1	1	5PS132DAH01
	G	E12 B14 900	COMPRESSOR	MC		1		1				KN092VDMHC
	G	E12 E92 900	COMPRESSOR	MC			1					KN083VDMHC
9	G	E12 901 661	STOP VALVE (GAS)		1	1	1	1	1	1	1	φ9.52
10	G	E12 901 662	STOP VALVE (LIQUID)		1			1	1			φ6.35
	G	E12 B14 662	STOP VALVE (LIQUID)			1	1	1		1	1	φ6.35
11	G	E12 901 233	BACK PANEL		1	1	1	1	1			
	G	E12 927 233	BACK PANEL						1	1		
	G	E12 C39 233	BACK PANEL								1	
12	G	E12 927 245	SERVICE PANEL		1	1	1	1	1	1	1	
13	G	E12 817 374	TERMINAL BLOCK	TB1	1	1		1	1	1	1	3P
	G	E12 D89 374	TERMINAL BLOCK	TB1			1				1	3P
14	G	E12 832 374	TERMINAL BLOCK	TB2	1	1	1	1	1	1	1	2P
15	G	E12 899 351	OUTDOOR FAN CAPACITOR	C2	1	1	1	1	1			1.8μF/440VAC
	G	E12 900 351	OUTDOOR FAN CAPACITOR	C2						1	1	1
16	G	E12 742 353	COMPRESSOR CAPACITOR	C1	1			1				20μF/450VAC
	G	E12 665 353	COMPRESSOR CAPACITOR	C1		1	1		1	1	1	25μF/450VAC
17	G	E12 899 523	CONDENSER NET		1	1	1	1	1			
	G	E12 838 523	CONDENSER NET						1			
	G	E12 929 523	CONDENSER NET							1		
18	G	E12 B63 523	CONDENSER NET (A)								1	
19	G	E12 B64 523	CONDENSER NET (B)								1	
20	G	E12 C39 525	CONDENSER WIRE NET								1	
21	G	E12 899 515	MOTOR SUPPORT		1	1	1	1	1	1		
	G	E12 900 515	MOTOR SUPPORT							1		
	G	E12 B63 515	MOTOR SUPPORT								1	
22	G	E12 927 297	TOP PANEL		1	1	1	1	1	1	1	
23	G	E12 899 293	SEPARATOR		1	1	1	1	1	1		
	G	E12 900 293	SEPARATOR							1		
	G	E12 B63 293	SEPARATOR								1	
24	G	E12 735 382	FUSE	F					1	1	1	T20AL250V
25	G	E12 735 241	FUSE HOLDER						1	1	1	
26	G	E12 466 340	COMPRESSOR CONTACTOR	52C	1	1	1	1	1	1	1	
27	G	E12 895 383	SURGE ABSORBER	DSAR	1	1	1	1	1	1	1	
28	G	E12 408 936	CAPILLARY TUBE		1			1				φ 3.0 x φ 1.4 x 700
	G	E12 637 936	CAPILLARY TUBE						1			φ 3.0 x φ 1.4 x 450
	G	E12 B14 936	CAPILLARY TUBE			1	1		1			φ 3.0 x φ 1.4 x 900
	G	E12 A86 936	CAPILLARY TUBE							1		φ 3.0 x φ 1.4 x 350
	G	E12 642 936	CAPILLARY TUBE								1	φ 3.0 x φ 1.4 x 400
29	G	E12 903 330	OVERLOAD RELAY	51C					1	1		
30	G	E12 903 330	COMPRESSOR THERMAL PROTECTOR	26C							1	

