

Revision B:

- The fan guard for MUCFH-GA 60VB-E1 has been changed.

Please void OB381 REVISED EDITION-A.

OUTDOOR UNIT SERVICE MANUAL



**No. OB381
REVISED EDITION-B**

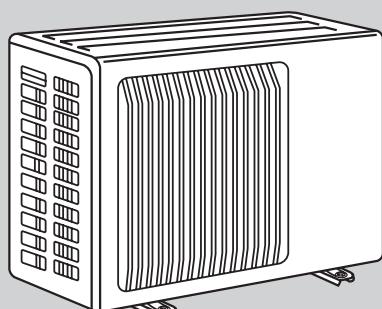
Models

MUCFH-GA35VB - E1

MUCFH-GA50VB - E1

MUCFH-GA60VB - E1

Indoor unit service manual
MCFH-GA·VB Series (OB380)



MUCFH-GA50VB

CONTENTS

1. TECHNICAL CHANGES	2
2. PART NAMES AND FUNCTIONS	5
3. SPECIFICATION	6
4. NOISE CRITERIA CURVES	7
5. OUTLINES AND DIMENSIONS	8
6. WIRING DIAGRAM	10
7. REFRIGERANT SYSTEM DIAGRAM	11
8. PERFORMANCE CURVES	13
9. ACTUATOR CONTROL	24
10. SERVICE FUNCTIONS	24
11. TROUBLESHOOTING	25
12. DISASSEMBLY INSTRUCTIONS	35
13. PARTS LIST	42
14. RoHS PARTS LIST	48

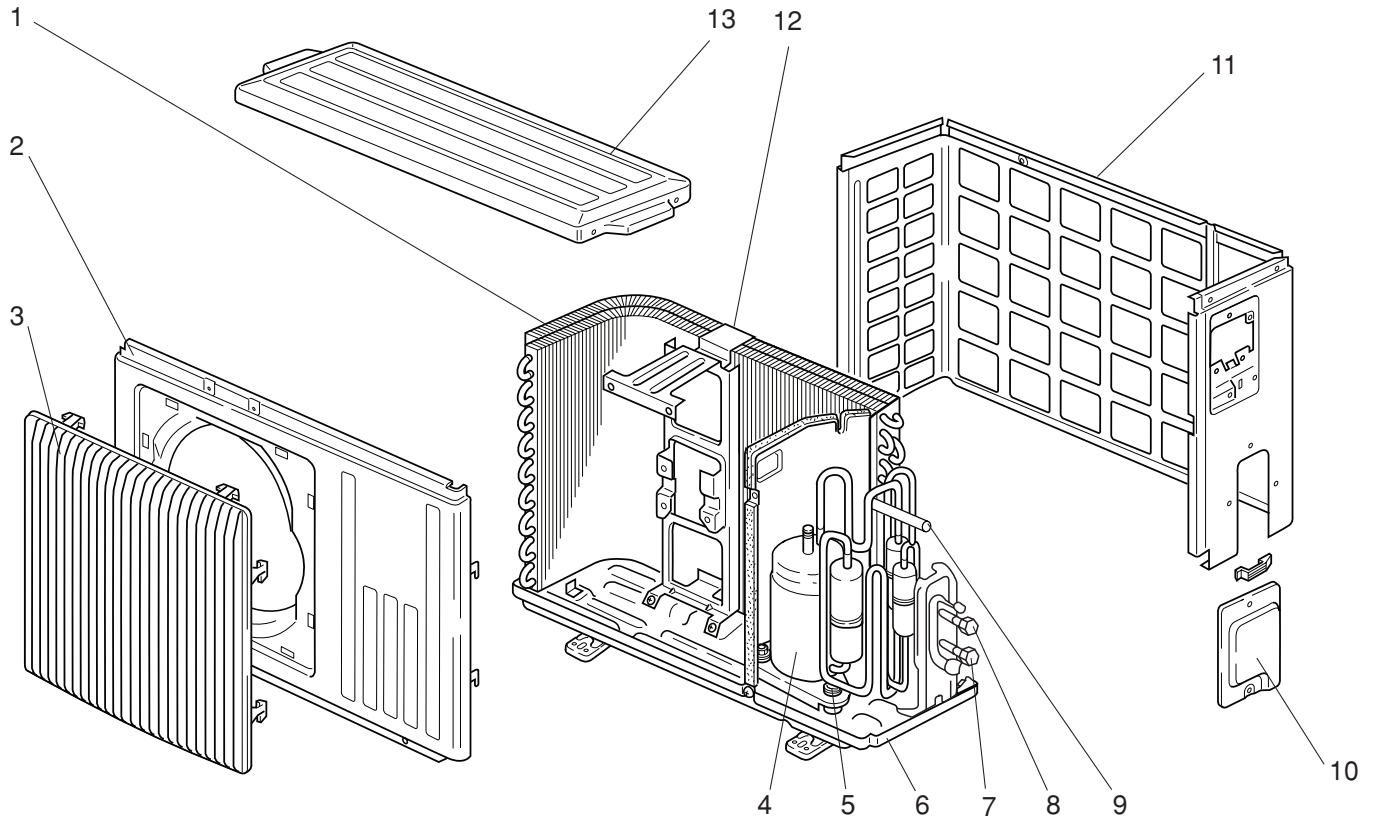
NOTE:

This service manual describes technical data of the outdoor units.
RoHS compliant products have <G> mark on the spec name plate.
For servicing of RoHS compliant products, refer to the RoHS PARTS LIST (RoHS compliant).



MUCFH-GA35VB

13-1. OUTDOOR UNIT STRUCTURAL PARTS



PARTS LIST (non-RoHS compliant)

MUCFH-GA35VB

13-1. OUTDOOR UNIT STRUCTURAL PARTS

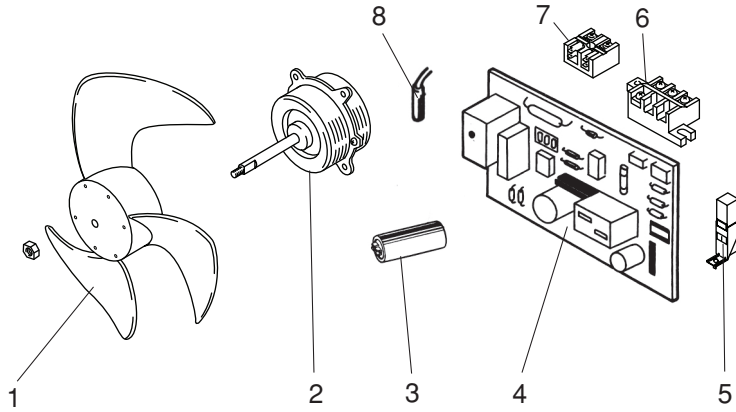
Part numbers that are circled are not shown in the illustration.

No.	Part No.	Part name	Symbol in Wiring Diagram	Q'ty/unit	Remarks
				MUCFH-GA35VB- E1	
1	E02 837 630	OUTDOOR HEAT EXCHANGER		1	
2	E02 815 232	CABINET		1	
3	E02 815 521	GRILLE (OUT)		1	
4	E02 754 900	COMPRESSOR	MC	1	RN135VHSHT
5	E02 075 506	COMPRESSOR RUBBER SET		3	3RUBBERS/SET
6	E02 832 290	BASE		1	
7	E02 910 661	STOP VALVE (GAS)		1	φ12.7
8	E02 910 662	STOP VALVE (LIQUID)		1	φ6.35
9	E02 931 961	4-WAY VALVE		1	
10	E02 815 245	SERVICE PANEL		1	
11	E02 836 233	BACK PANEL		1	
12	E02 442 515	MOTOR SUPPORT		1	
13	E02 815 297	TOP PANEL		1	
⑭	E02 156 936	CAPILLARY TUBE		2	φ3.0xφ1.4x500
	E02 726 936	CAPILLARY TUBE		1	φ3.0xφ1.6x600
	E02 837 936	CAPILLARY TUBE		1	φ3.0xφ1.6x1050
⑮	E02 891 642	CHECK VALVE		1	

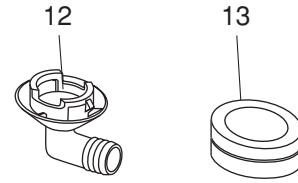
PARTS LIST (non-RoHS compliant)

MUCFH-GA35VB

13-2. OUTDOOR UNIT ELECTRICAL PARTS AND FUNCTIONAL PARTS



13-3. ACCESSORY



13-2. OUTDOOR UNIT ELECTRICAL PARTS AND FUNCTIONAL PARTS

Part numbers that are circled are not shown in the illustration.

No.	Part No.	Part name	Symbol in Wiring Diagram	Q'ty/unit	Remarks
				MUCFH-GA35VB- E1	
1	E02 665 501	PROPELLER		1	
2	E02 672 301	OUTDOOR FAN MOTOR	MF	1	RA6V33-□□
3	E02 696 353	COMPRESSOR CAPACITOR	C1	1	30 μ F /440V AC
4	E02 836 451	DEICER P.C. BOARD		1	
5	E02 890 383	SURGE ABSORBER	DSAR	1	
6	E02 817 374	TERMINAL BLOCK	TB1	1	3P
7	E02 836 374	TERMINAL BLOCK	TB2	1	2P
8	E02 699 310	DEFROST THERMISTOR	RT61	1	
⑨	E02 910 490	R. V. COIL	21S4	1	
⑩	E02 095 382	FUSE	F61	1	250V /2A
⑪	E02 820 385	VARISTOR	NR61	1	

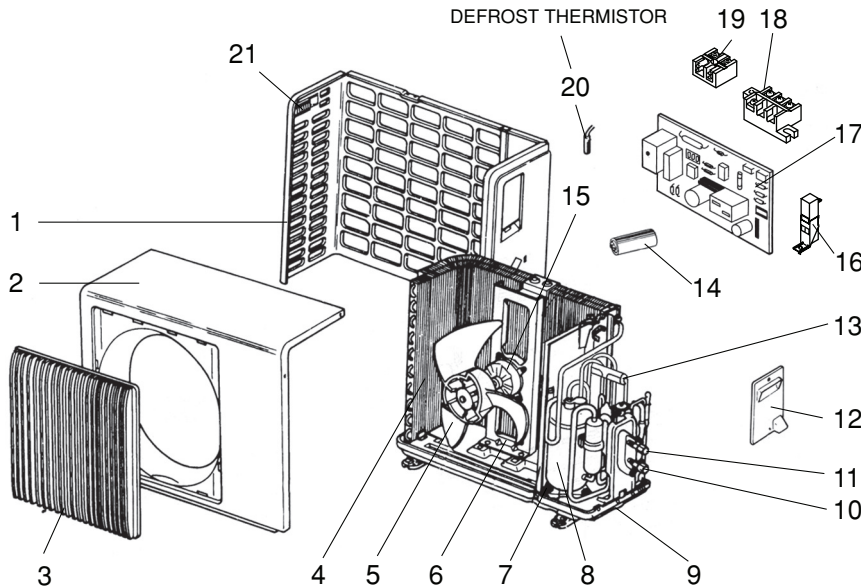
13-3. ACCESSORY

12	E02 817 704	DRAIN SOCKET		1	
13	E02 444 705	DRAIN CAP		2	φ33 2PCS/SET

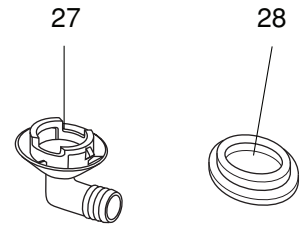
PARTS LIST (non-RoHS compliant)

MUCFH-GA50VB

13-4. OUTDOOR UNIT STRUCTURAL PARTS, ELECTRICAL PARTS AND FUNCTIONAL PARTS



13-5. ACCESSORY



13-4. OUTDOOR UNIT STRUCTURAL PARTS, ELECTRICAL PARTS AND FUNCTIONAL PARTS

Part numbers that are circled are not shown in the illustration.

No.	Part No.	Part Name	Symbol in Wiring Diagram	Q'ty/unit		Remarks
					MUCFH-GA50VB- E1	
1	E02 817 233	BACK PANEL		1		
2	E02 817 232	CABINET		1		
3	E02 817 521	GRILLE		1		
4	E02 643 630	OUTDOOR HEAT EXCHANGER		1		
5	E02 141 501	PROPELLER		1		
6	E02 139 515	MOTOR SUPPORT		1		
7	E02 075 506	COMPRESSOR RUBBER SET		3		3RUBBERS/SET
8	E02 817 900	COMPRESSOR	MC	1		RN196VHSHT
9	E02 817 290	BASE		1		
10	E02 817 661	STOP VALVE (GAS)		1		φ12.7
11	E02 820 662	STOP VALVE (LIQUID)		1		φ 6.35
12	E02 817 245	SERVICE PANEL		1		
13	E02 891 961	4-WAY VALVE		1		
14	E02 888 353	COMPRESSOR CAPACITOR	C1	1		40μF/440V AC
15	E02 816 301	OUTDOOR FAN MOTOR	MF	1		RA6V50 - □□
16	E02 895 383	SURGE ABSORBER	DSAR	1		
17	E02 820 451	DEICER P.C. BOARD		1		
18	E02 817 374	TERMINAL BLOCK	TB1	1		3P
19	E02 821 374	TERMINAL BLOCK	TB2	1		2P
20	E02 820 310	DEFROST THERMISTOR	RT61	1		
21	E02 817 009	HANDLE		1		
22	E02 139 936	CAPILLARY TUBE		2		φ3.0×φ1.6×750
	E02 746 937	CAPILLARY TUBE		1		φ3.0×φ1.6×650
	E02 289 937	CAPILLARY TUBE		1		φ3.0×φ1.6×500
	E02 820 936	CAPILLARY TUBE		1		φ2.5×φ0.6×1000
23	E02 095 382	FUSE	F61	1		250V / 2A
24	E02 821 490	R.V. COIL	21S4	1		
25	E02 891 642	CHECK VALVE		1		
26	E02 820 385	VARISTOR	NR61	1		

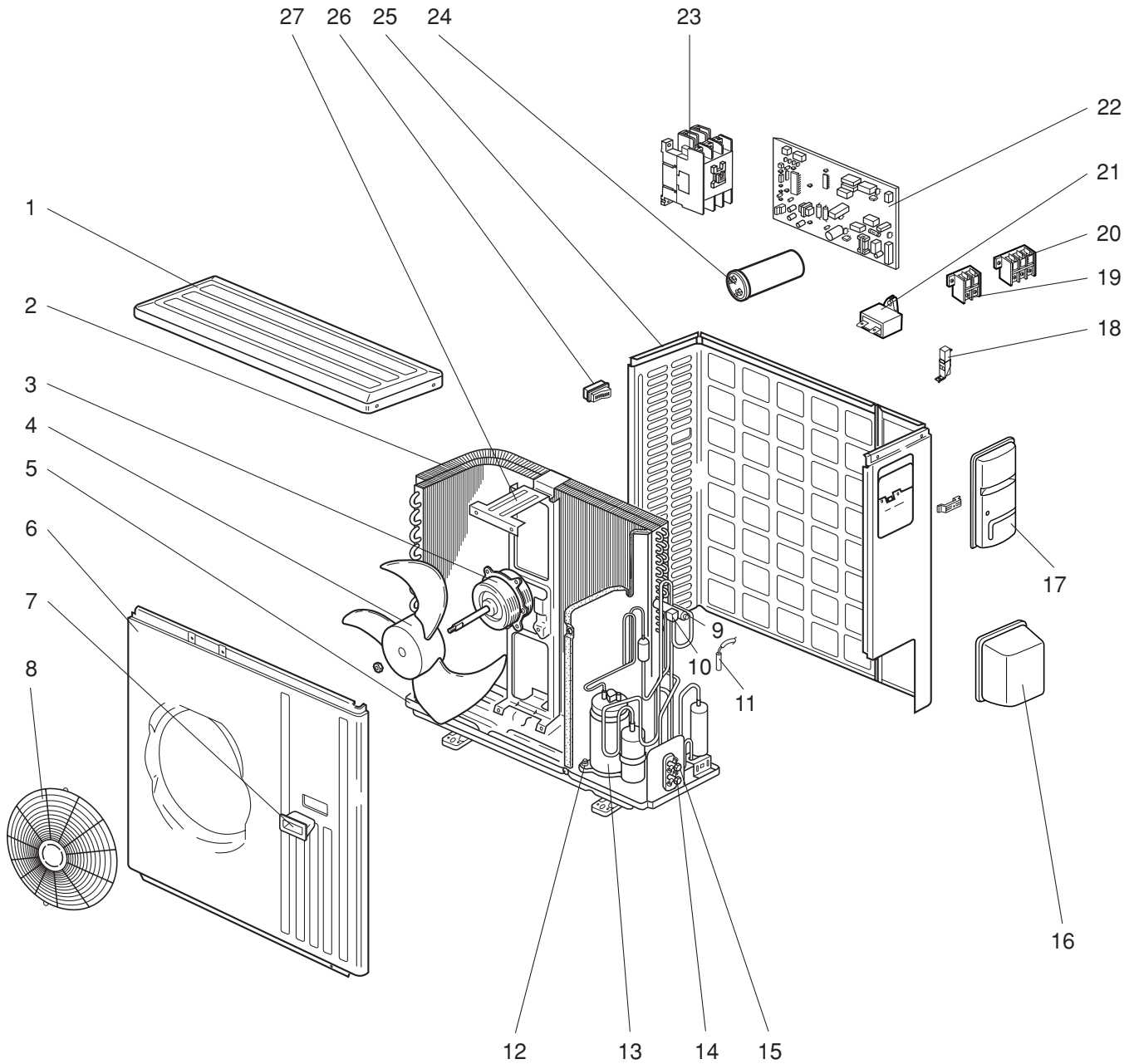
13-5. ACCESSORY

27	E02 817 704	DRAIN SOCKET		1		
28	E02 444 705	DRAIN CAP		2		φ33 2PCS/SET
	E02 444 706	DRAIN CAP		1		φ16

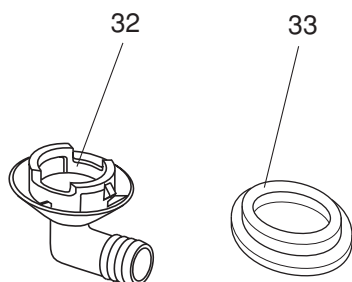
PARTS LIST (non-RoHS compliant)

MUCFH-GA60VB

13-6. OUTDOOR UNIT STRUCTURAL PARTS, ELECTRICAL PARTS AND FUNCTIONAL PARTS



13-7. ACCESSORY



PARTS LIST (non-RoHS compliant)

MUCFH-GA60VB

13-6. OUTDOOR UNIT STRUCTURAL PARTS, ELECTRICAL PARTS AND FUNCTIONAL PARTS

Part numbers that are circled are not shown in the illustration.

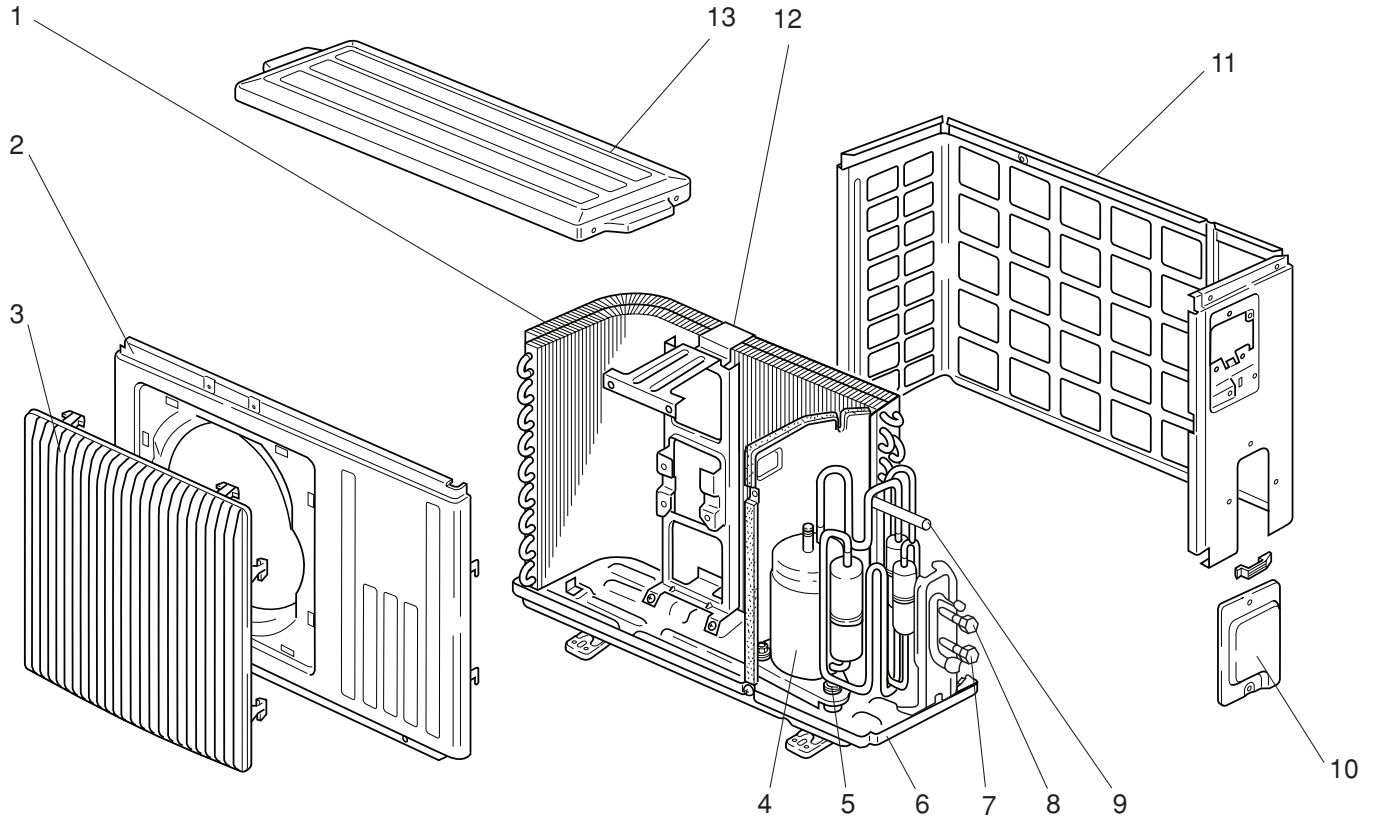
No.	Part No.	Part Name	Symbol in Wiring Diagram	Q'ty/unit	Remarks
				MUCFH-GA60VB - E1	
1	E02 819 297	TOP PANEL		1	
2	E02 821 630	OUTDOOR HEAT EXCHANGER		1	
3	E02 892 301	OUTDOOR FAN MOTOR	MF	1	RA6V85- □□
4	E02 214 501	PROPELLER		1	
5	E02 821 290	BASE		1	
6	E02 819 232	CABINET		1	
7	E02 819 009	HANDLE		1	
8	E02 819 521	FAN GUARD		1	
9	E02 891 961	4-WAY VALVE		1	
10	E02 821 490	R.V. COIL	21S4	1	
11	E02 821 310	DEFROST THERMISTOR	RT61	1	
12	E02 527 506	COMPRESSOR RUBBER SET		4	4RUBBERS/SET
13	E02 821 900	COMPRESSOR	MC	1	NN29VBAHT
14	E02 819 661	STOP VALVE (GAS)		1	φ15.88
15	E02 821 662	STOP VALVE (LIQUID)		1	φ6.35
16	E02 819 650	VALVE COVER		1	
17	E02 819 245	SERVICE PANEL		1	
18	E02 890 383	SURGE ABSORBER	DSAR	1	
19	E02 821 374	TERMINAL BLOCK	TB2	1	2P
20	E02 817 374	TERMINAL BLOCK	TB1	1	3P
21	E02 895 351	OUTDOOR FAN CAPACITOR	C2	1	3.0μF/440V AC
22	E02 912 451	DEICER P.C. BOARD		1	
23	E07 012 340	COMPRESSOR CONTACTOR	52C	1	
24	E02 889 353	COMPRESSOR CAPACITOR	C1	1	55μF/440V AC
25	E02 819 233	BACK PANEL (OUT)		1	
26	E02 817 009	HANDLE		1	
27	E02 726 515	MOTOR SUPPORT		1	
28	E02 127 382	FUSE	F61	1	250V/3.15A
29	E02 336 385	VARISTOR	NR61	1	
30	E02 891 642	CHECK VALVE		1	
31	E02 069 936	CAPILLARY TUBE		1	φ3.0xφ2.0x400
	E02 139 937	CAPILLARY TUBE		1	φ3.0xφ2.0x800

13-7. ACCESSORY

32	E02 817 704	DRAIN SOCKET		1	
33	E02 444 705	DRAIN CAP		2	φ33 2PCS/SET

MUCFH-GA35VB

14-1. OUTDOOR UNIT STRUCTURAL PARTS



PARTS LIST (non-RoHS compliant)

MUCFH-GA35VB

14-1. OUTDOOR UNIT STRUCTURAL PARTS

Part numbers that are circled are not shown in the illustration.

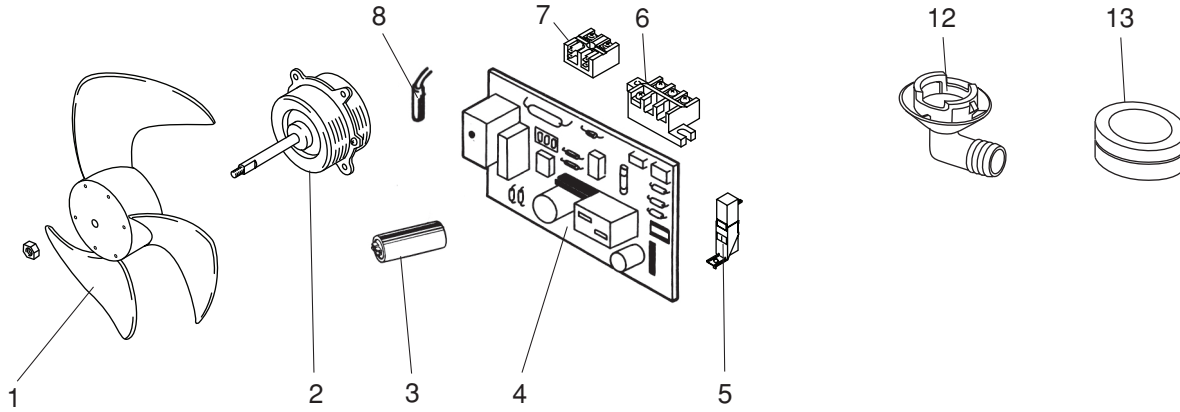
No.	RoHS	Part No.	Part name	Symbol in Wiring Diagram	Q'ty/unit		Remarks
						MUCFH-GA35VB- E1	
1	G	E12 837 630	OUTDOOR HEAT EXCHANGER			1	
2	G	E12 815 232	CABINET			1	
3	G	E12 815 521	GRILLE(OUT)			1	
4	G	E12 754 900	COMPRESSOR	MC		1	RN135VHSHT
5	G	E12 075 506	COMPRESSOR RUBBER SET			3	3RUBBERS/SET
6	G	E12 832 290	BASE			1	
7	G	E12 910 661	STOP VALVE (GAS)			1	φ12.7
8	G	E12 910 662	STOP VALVE (LIQUID)			1	φ6.35
9	G	E12 931 961	4-WAY VALVE			1	
10	G	E12 815 245	SERVICE PANEL			1	
11	G	E12 836 233	BACK PANEL			1	
12	G	E12 442 515	MOTOR SUPPORT			1	
13	G	E12 815 297	TOP PANEL			1	
⑭	G	E12 156 936	CAPILLARY TUBE			2	φ3.0xφ1.4x500
	G	E12 726 936	CAPILLARY TUBE			1	φ3.0xφ1.6x600
	G	E12 837 936	CAPILLARY TUBE			1	φ3.0xφ1.6x1050
⑮	G	E12 891 642	CHECK VALVE			1	

RoHS PARTS LIST (RoHS compliant)

MUCFH-GA35VB

14-2. OUTDOOR UNIT ELECTRICAL PARTS AND FUNCTIONAL PARTS

14-3. ACCESSORY



14-2. OUTDOOR UNIT ELECTRICAL PARTS AND FUNCTIONAL PARTS

Part numbers that are circled are not shown in the illustration.

No.	RoHS	Part No.	Part name	Symbol in Wiring Diagram	Q'ty/unit		Remarks
						MUCFH-GA35VB- E1	
1	G	E12 665 501	PROPELLER			1	
2	G	E12 672 301	OUTDOOR FAN MOTOR	MF		1	RA6V33-□□
3	G	E12 900 353	COMPRESSOR CAPACITOR	C1		1	30 μ F /440V AC
4	G	E12 836 451	DEICER P.C. BOARD			1	
5	G	E12 890 383	SURGE ABSORBER	DSAR		1	
6	G	E12 817 374	TERMINAL BLOCK	TB1		1	3P
7	G	E12 836 374	TERMINAL BLOCK	TB2		1	2P
8	G	E12 699 310	DEFROST THERMISTOR	RT61		1	
⑨	G	E12 910 490	R. V. COIL	21S4		1	
⑩	G	E12 095 382	FUSE	F61		1	250V /2A
⑪	G	E12 820 385	VARISTOR	NR61		1	

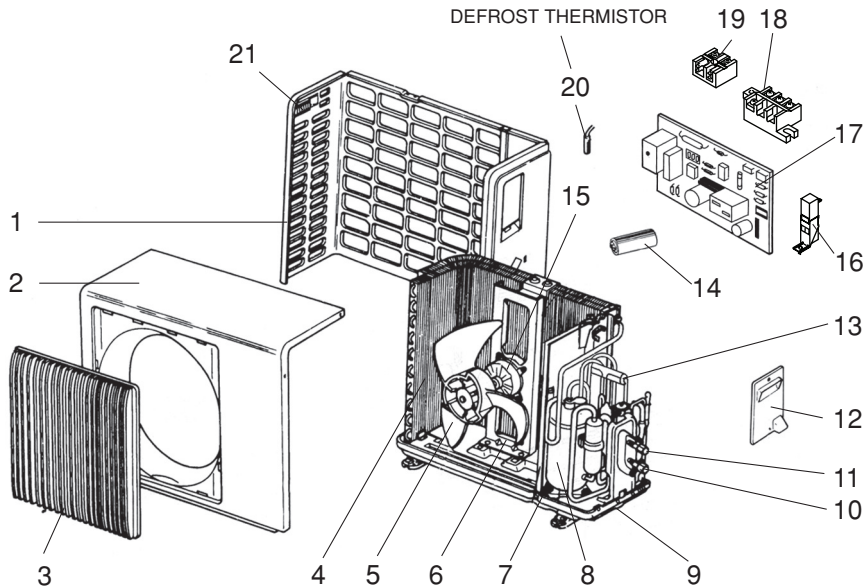
14-3. ACCESSORY

12	G	E12 817 704	DRAIN SOCKET			1	
13	G	E12 444 705	DRAIN CAP			2	ϕ 33 2PCS/SET

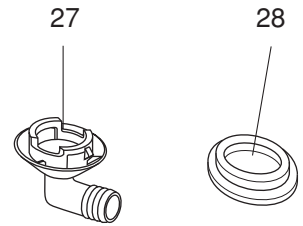
RoHS PARTS LIST (RoHS compliant)

MUCFH-GA50VB

14-4. OUTDOOR UNIT STRUCTURAL PARTS, ELECTRICAL PARTS AND FUNCTIONAL PARTS



14-5. ACCESSORY



14-4. OUTDOOR UNIT STRUCTURAL PARTS, ELECTRICAL PARTS AND FUNCTIONAL PARTS

Part numbers that are circled are not shown in the illustration.

No.	RoHS	Part No.	Part Name	Symbol in Wiring Diagram	Q'ty/unit		Remarks
					MUCFH-GA50VB- E1		
1	G	E12 817 233	BACK PANEL			1	
2	G	E12 817 232	CABINET			1	
3	G	E12 817 521	GRILLE			1	
4	G	E12 643 630	OUTDOOR HEAT EXCHANGER			1	
5	G	E12 141 501	PROPELLER			1	
6	G	E12 139 515	MOTOR SUPPORT			1	
7	G	E12 075 506	COMPRESSOR RUBBER SET			3	3RUBBERS/SET
8	G	E12 817 900	COMPRESSOR	MC		1	RN196VHSHT
9	G	E12 817 290	BASE			1	
10	G	E12 817 661	STOP VALVE (GAS)			1	φ12.7
11	G	E12 820 662	STOP VALVE (LIQUID)			1	φ 6.35
12	G	E12 817 245	SERVICE PANEL			1	
13	G	E12 891 961	4-WAY VALVE			1	
14	G	E12 888 353	COMPRESSOR CAPACITOR	C1		1	40μF/440V AC
15	G	E12 816 301	OUTDOOR FAN MOTOR	MF		1	RA6V50 - □□
16	G	E12 895 383	SURGE ABSORBER	DSAR		1	
17	G	E12 820 451	DEICER P.C. BOARD			1	
18	G	E12 817 374	TERMINAL BLOCK	TB1		1	3P
19	G	E12 821 374	TERMINAL BLOCK	TB2		1	2P
20	G	E12 820 310	DEFROST THERMISTOR	RT61		1	
21	G	E12 817 009	HANDLE			1	
22	G	E12 139 936	CAPILLARY TUBE			2	φ3.0×φ1.6×750
	G	E12 746 937	CAPILLARY TUBE			1	φ3.0×φ1.6×650
	G	E12 289 937	CAPILLARY TUBE			1	φ3.0×φ1.6×500
	G	E12 820 936	CAPILLARY TUBE			1	φ2.5×φ0.6×1000
23	G	E12 095 382	FUSE	F61		1	250V / 2A
24	G	E12 821 490	R.V. COIL	21S4		1	
25	G	E12 891 642	CHECK VALVE			1	
26	G	E12 820 385	VARIATOR	NR61		1	

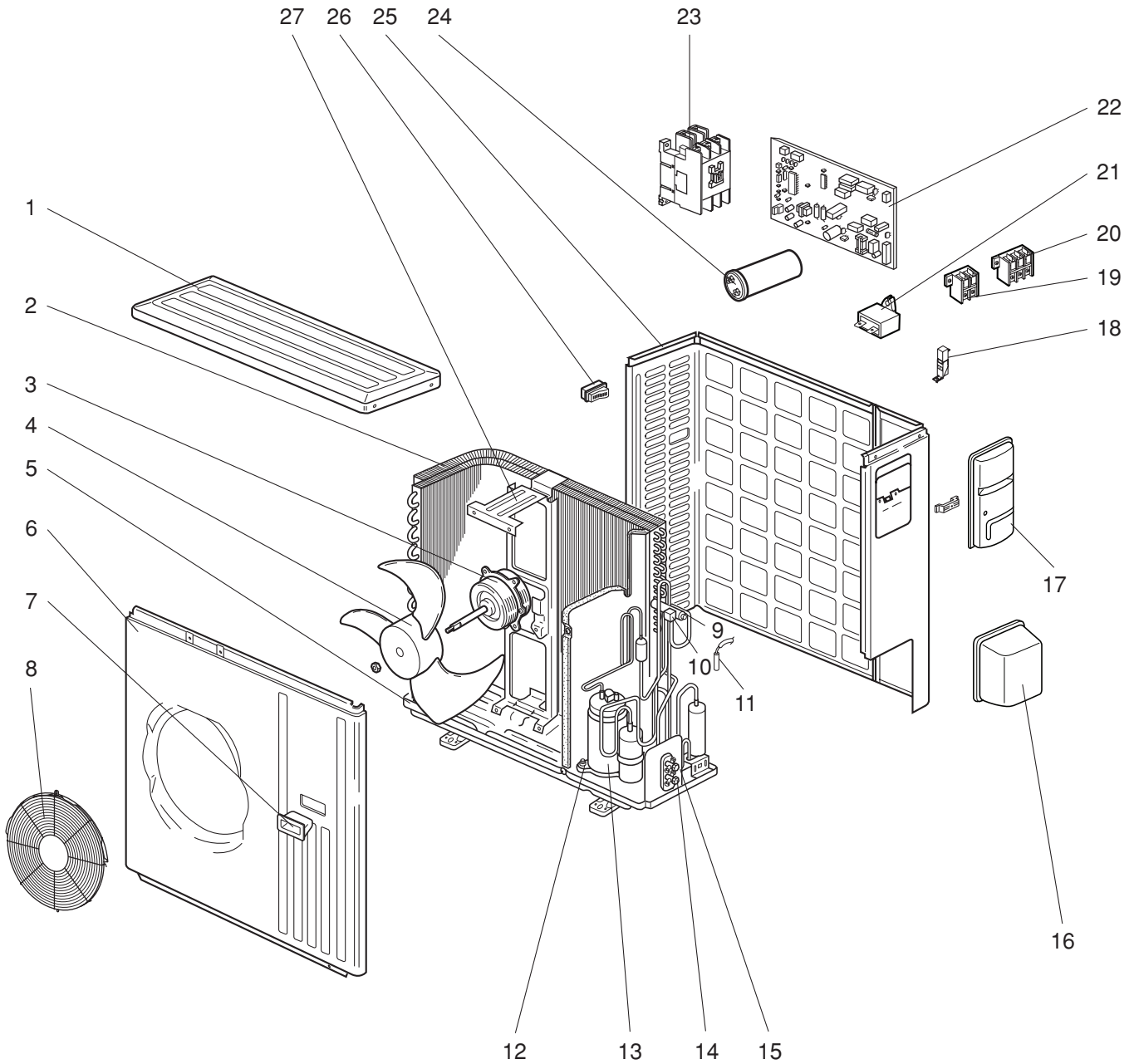
14-5. ACCESSORY

27	G	E12 817 704	DRAIN SOCKET			1	
28	G	E12 444 705	DRAIN CAP			2	φ33 2PCS/SET
	G	E12 444 706	DRAIN CAP			1	φ16

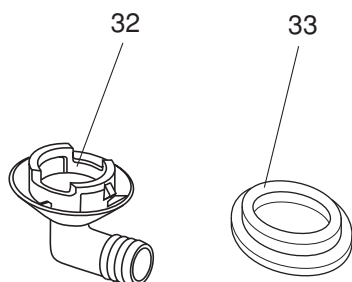
RoHS PARTS LIST (RoHS compliant)

MUCFH-GA60VB

14-6. OUTDOOR UNIT STRUCTURAL PARTS, ELECTRICAL PARTS AND FUNCTIONAL PARTS



14-7. ACCESSORY



RoHS PARTS LIST (RoHS compliant)

MUCFH-GA60VB

14-6. OUTDOOR UNIT STRUCTURAL PARTS, ELECTRICAL PARTS AND FUNCTIONAL PARTS

Part numbers that are circled are not shown in the illustration.

No.	RoHS	Part No.	Part Name	Symbol in Wiring Diagram	Q'ty/unit	Remarks
					MUCFH-GA60VB - E1	
1	G	E12 819 297	TOP PANEL		1	
2	G	E12 821 630	OUTDOOR HEAT EXCHANGER		1	
3	G	E12 892 301	OUTDOOR FAN MOTOR	MF	1	RA6V85-□□
4	G	E12 214 501	PROPELLER		1	
5	G	E12 821 290	BASE		1	
6	G	E12 819 232	CABINET		1	
7	G	E12 819 009	HANDLE		1	
8	G	E12 D84 521	FAN GUARD		1	Including ice guard
9	G	E12 891 961	4-WAY VALVE		1	
10	G	E12 821 490	R.V. COIL	21S4	1	
11	G	E12 821 310	DEFROST THERMISTOR	RT61	1	
12	G	E12 527 506	COMPRESSOR RUBBER SET		4	4RUBBERS/SET
13	G	E12 821 900	COMPRESSOR	MC	1	NN29VBAHT
14	G	E12 819 661	STOP VALVE (GAS)		1	φ15.88
15	G	E12 821 662	STOP VALVE (LIQUID)		1	φ6.35
16	G	E12 819 650	VALVE COVER		1	
17	G	E12 819 245	SERVICE PANEL		1	
18	G	E12 890 383	SURGE ABSORBER	DSAR	1	
19	G	E12 821 374	TERMINAL BLOCK	TB2	1	2P
20	G	E12 817 374	TERMINAL BLOCK	TB1	1	3P
21	G	E12 895 351	OUTDOOR FAN CAPACITOR	C2	1	3.0μF/440V AC
22	G	E12 912 451	DEICER P.C. BOARD		1	
23	G	E17 012 340	COMPRESSOR CONTACTOR	52C	1	
24	G	E12 889 353	COMPRESSOR CAPACITOR	C1	1	55μF/440V AC
25	G	E12 819 233	BACK PANEL (OUT)		1	
26	G	E12 817 009	HANDLE		1	
27	G	E12 726 515	MOTOR SUPPORT		1	
28	G	E12 A49 382	FUSE	F61	1	T3.15AL250V
29	G	E12 336 385	VARISTOR	NR61	1	
30	G	E12 891 642	CHECK VALVE		1	
31	G	E12 069 936	CAPILLARY TUBE		1	φ3.0xφ2.0x400
	G	E12 139 937	CAPILLARY TUBE		1	φ3.0xφ2.0x800

14-7. ACCESSORY

32	G	E12 817 704	DRAIN SOCKET		1	
33	G	E12 444 705	DRAIN CAP		2	φ33 2PCS/SET



HEAD OFFICE: TOKYO BLDG., 2-7-3, MARUNOUCHI, CHIYODA-KU, TOKYO 100-8310, JAPAN

© Copyright 2005 MITSUBISHI ELECTRIC ENGINEERING CO.,LTD
Distributed in Jun 2010. No.OB381 REVISED EDITION-B 5
Distributed in May 2006. No.OB381 REVISED EDITION-A 6
Distributed in Jan. 2005. No.OB381 6
Made in Japan

New publication, effective Jun. 2010
Specifications subject to change without notice.