

**Revision:C**

- RoHS PARTS LIST has been changed.

Please void OB371 REVISED EDITION-B.

# INDOOR UNIT SERVICE MANUAL

**No. OB371  
REVISED EDITION-C**

## Wireless type Models

**MSZ-FA25VA** ■ E1

**MSZ-FA25VA** ■ E2

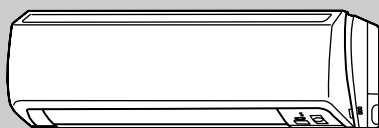
**MSZ-FA25VA** ■ E3

**MSZ-FA35VA** ■ E1

**MSZ-FA35VA** ■ E2

**MSZ-FA35VA** ■ E3

Outdoor unit service manual  
MUZ-FA-VA(H) Series (OB372)  
MXZ-A-VA Series (OB377)  
MXZ-8A140VA<sub>1</sub> (OC316)



## CONTENTS

1. TECHNICAL CHANGES .....	2
2. PART NAMES AND FUNCTIONS .....	3
3. SPECIFICATION .....	5
4. NOISE CRITERIA CURVES .....	6
5. OUTLINES AND DIMENSIONS .....	7
6. WIRING DIAGRAM .....	8
7. REFRIGERANT SYSTEM DIAGRAM .....	8
8. SERVICE FUNCTIONS .....	9
9. TROUBLESHOOTING .....	11
10. DISASSEMBLY INSTRUCTIONS .....	31
11. PARTS LIST .....	35
12. RoHS PARTS LIST .....	39
13. OPTIONAL PARTS .....	42

**NOTE:**

RoHS compliant products have <G> mark on the spec name plate.  
For servicing of RoHS compliant products, refer to the RoHS Parts List.



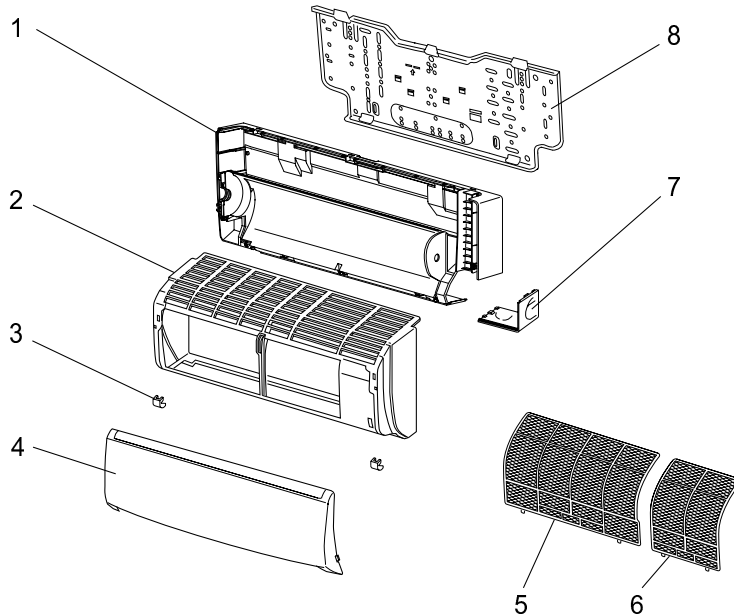
# 11

## PARTS LIST (non-RoHS compliant)

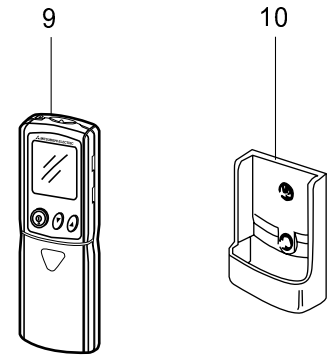
MSZ-FA25VA

MSZ-FA35VA

### 11-1. INDOOR UNIT STRUCTURAL PARTS



### 11-2. ACCESSORY AND REMOTE CONTROLLER



#### 11-1. INDOOR UNIT STRUCTURAL PARTS

No.	Part No.	Part name	Symbol in Wiring Diagram	Q'ty/unit				Remarks
				MSZ-FA25VA-		MSZ-FA35VA-		
				E1	E2	E1	E2	
1	E02 897 234	BOX		1		1		
	E02 A32 234	BOX			1		1	
2	E02 913 000	PANEL ASSEMBLY		1	1	1	1	Including No.3,4
3	E02 913 067	SCREW CAP		2	2	2	2	2PCS/SET
4	E02 913 010	FRONT PANEL		1	1	1	1	
5	E02 914 100	AIR FILTER (LEFT)		1	1	1	1	
6	E02 913 100	AIR FILTER (RIGHT)		1	1	1	1	
7	E02 913 975	CORNER BOX (RIGHT)		1		1		
	E02 A32 975	CORNER BOX (RIGHT)			1		1	
8	E02 913 970	INSTALLATION PLATE		1	1	1	1	

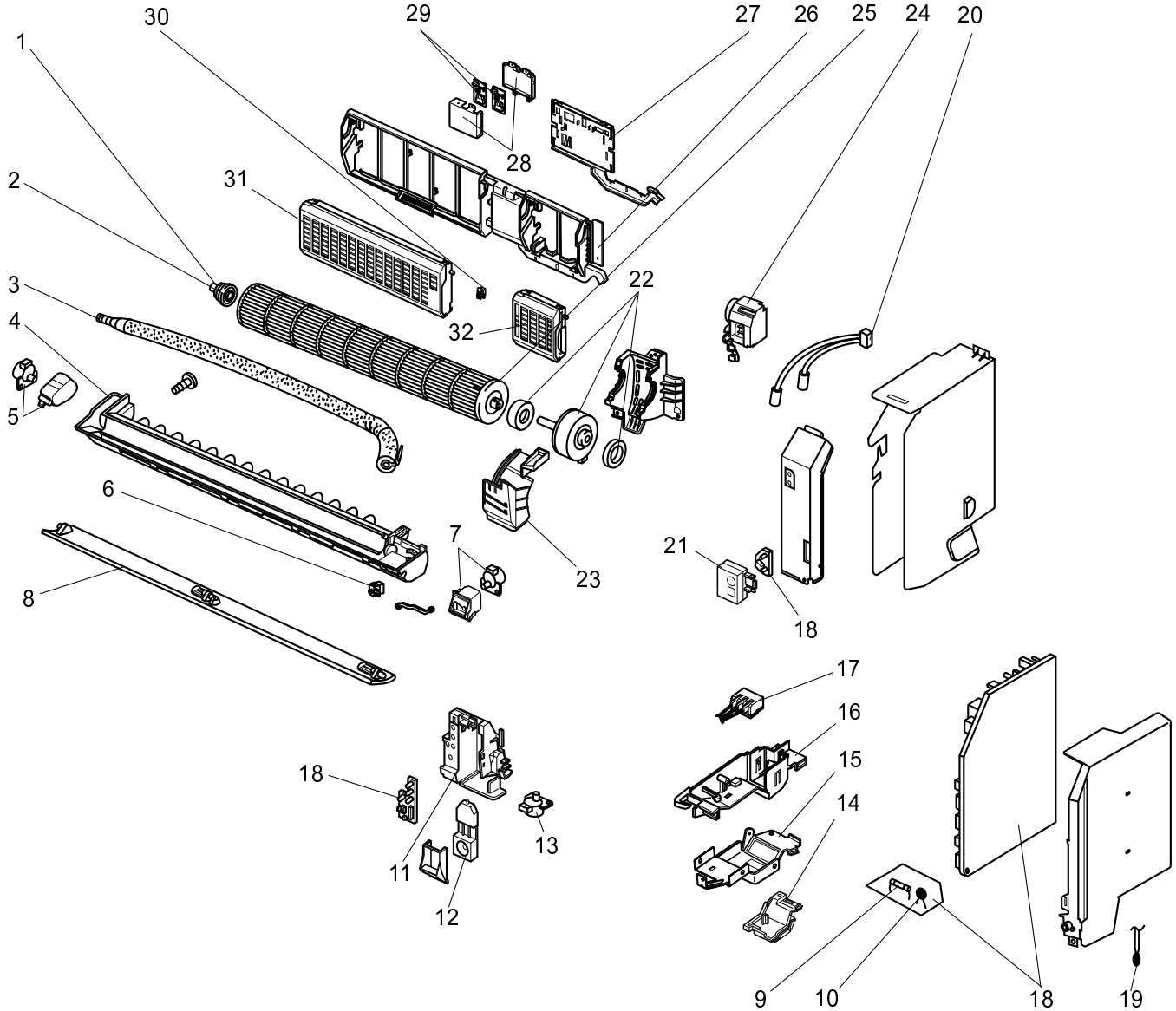
#### 11-2. ACCESSORY AND REMOTE CONTROLLER

9	E02 913 426	REMOTE CONTROLLER		1	1	1	1	KM05A
10	E02 527 083	REMOTE CONTROLLER HOLDER		1	1	1	1	

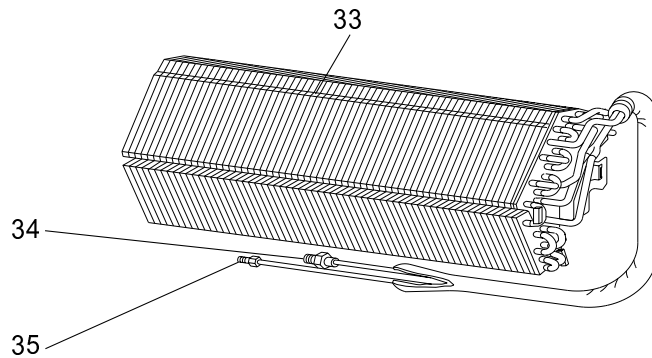
# PARTS LIST (non-RoHS compliant)

MSZ-FA25VA  
MSZ-FA35VA

## 11-3. INDOOR UNIT ELECTRICAL PARTS AND FUNCTIONAL PARTS



## 11-4. INDOOR UNIT HEAT EXCHANGER



# PARTS LIST (non-RoHS compliant)

## 11-3. INDOOR UNIT ELECTRICAL PARTS AND FUNCTIONAL PARTS

No.	Part No.	Part name	Symbol in Wiring Diagram	Q'ty/unit				Remarks
				MSZ-FA25VA-		MSZ-FA35VA-		
				E1	E2	E1	E2	
1	E02 751 509	BEARING MOUNT		1	1	1	1	
2	E02 001 504	SLEEVE BEARING		1	1	1	1	
3	E02 897 702	DRAIN HOSE		1	1	1	1	
4	E02 913 235	NOZZLE ASSEMBLY		1	1	1	1	
5	E02 897 303	VANE MOTOR UNIT (HORIZONTAL)	MV1	1	1	1	1	UP & DOWN
6	E02 897 316	INTERLOCK SWITCH(FAN)		1	1	1	1	
7	E02 913 303	VANE MOTOR UNIT (VERTICAL)	MV2	1	1	1	1	RIGHT & LEFT
8	E02 913 040	HORIZONTAL VANE		1	1	1	1	
9	E02 127 382	FUSE	F11	1		1		T3.15AL250V
	E02 A49 382	FUSE	F11		1		1	T3.15AL250V
10	E02 661 385	VARISTOR	NR11	1	1	1	1	
11	E02 913 095	POWER MONITOR RECEIVER P.C. BOARD HOLDER		1	1	1	1	
12	E02 913 391	i-see Sensor	RR	1	1	1	1	
13	E02 914 303	i-see Sensor MOTOR	MT	1	1	1	1	
14	E02 897 784	VA CLAMP		1	1	1	1	
15	E02 897 780	TERMINAL BLOCK COVER		1	1	1	1	
16	E02 897 779	TERMINAL BLOCK HOLDER		1	1	1	1	
17	E02 913 375	TERMINAL BLOCK	TB	1	1	1	1	
18	E02 913 452	ELECTRONIC CONTROL P.C. BOARD *1		1	1			AUTO RESTART
	E02 914 452	ELECTRONIC CONTROL P.C. BOARD *1				1	1	AUTO RESTART
19	E02 897 308	ROOM TEMPERATURE THERMISTOR	RT11	1	1	1	1	
20	E02 913 307	INDOOR COIL THERMISTOR	RT12, RT13	1	1			
	E02 914 307	INDOOR COIL THERMISTOR	RT12, RT13			1	1	
21	E02 913 782	SWITCH HOLDER		1	1	1	1	
22	E02 897 300	INDOOR FAN MOTOR *2	MF	1		1		RC0J40-□□ or RC0J30-□□
	E02 915 300	INDOOR FAN MOTOR *2	MF		1		1	RC0J40-□□ or RC0J30-□□
23	E02 897 333	MOTOR BAND		1	1	1	1	
24	E02 898 303	FRONT PANEL DRIVING MOTOR	MP	1	1	1	1	
25	E02 897 302	LINE FLOW FAN		1	1	1	1	
26	E02 913 775	PLASMA ELEMENT HOLDER		1	1	1	1	
27	E02 913 776	PLASMA UNIT COVER		1	1	1	1	
28	E02 913 777	PLASMA ELECTRICAL BOX		1	1	1	1	
29	E02 897 440	PLASMA POWER P.C. BOARD		2	2	2	2	
30	E02 898 316	SAFETY DEVICE (PLASMA UNIT)		1	1	1	1	
31	E02 913 774	PLASMA AIR PURIFYING FILTER UNIT	PLASMA_A	1	1	1	1	
32	E02 914 774	PLASMA DEODORIZING FILTER UNIT	PLASMA_D	1	1	1	1	

\*1 Including SW P.C. BOARD and POWER MONITOR RECEIVER P.C. BOARD

\*2 Including FAN MOTOR RUBBER MOUNT (2 PCS/SET)

## 11-4. INDOOR UNIT HEAT EXCHANGER

33	E02 913 620	INDOOR HEAT EXCHANGER		1	1			
	E02 914 620	INDOOR HEAT EXCHANGER				1	1	
34	E02 815 666	UNION (GAS)		1	1	1	1	φ9.52
35	E02 151 667	UNION (LIQUID)		1	1	1	1	φ6.35



# 12

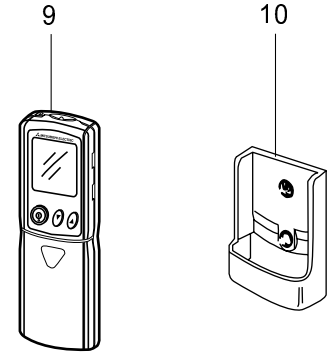
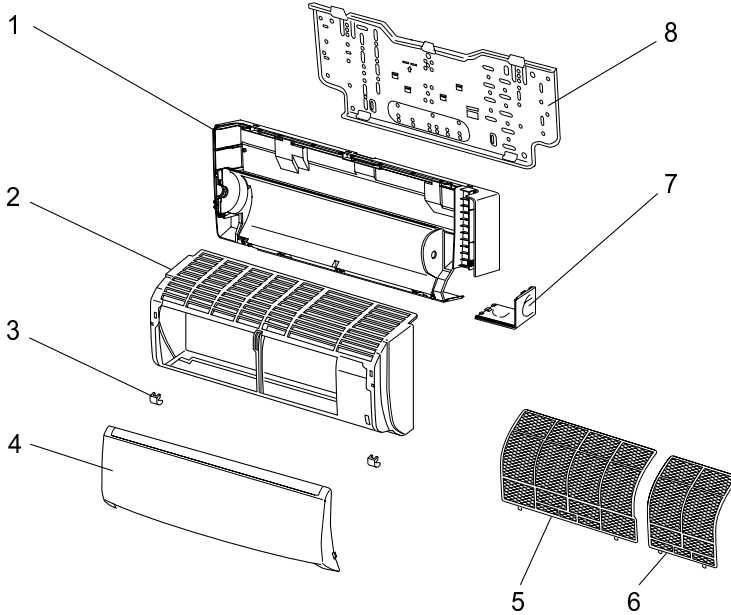
## RoHS PARTS LIST (RoHS compliant)

MSZ-FA25VA

MSZ-FA35VA

### 12-1. INDOOR UNIT STRUCTURAL PARTS

### 12-2. ACCESSORY AND REMOTE CONTROLLER



### 12-1. INDOOR UNIT STRUCTURAL PARTS

No.	RoHS	Part No.	Part name	Symbol in Wiring Diagram	Q'ty/unit				Remarks
					MSZ-FA25VA-		MSZ-FA35VA-		
					E2	E3	E2	E3	
1	G	E12 A32 234	BOX		1	1	1	1	
2	G	E12 913 000	PANEL ASSEMBLY		1	1	1	1	Including No.3,4
3	G	E12 913 067	SCREW CAP		2	2	2	2	2PCS/SET
4	G	E12 913 010	FRONT PANEL		1	1	1	1	
5	G	E12 914 100	AIR FILTER (LEFT)		1	1	1	1	
6	G	E12 913 100	AIR FILTER (RIGHT)		1	1	1	1	
7	G	E12 A32 975	CORNER BOX (RIGHT)		1	1	1	1	
8	G	E12 913 970	INSTALLATION PLATE		1	1	1	1	

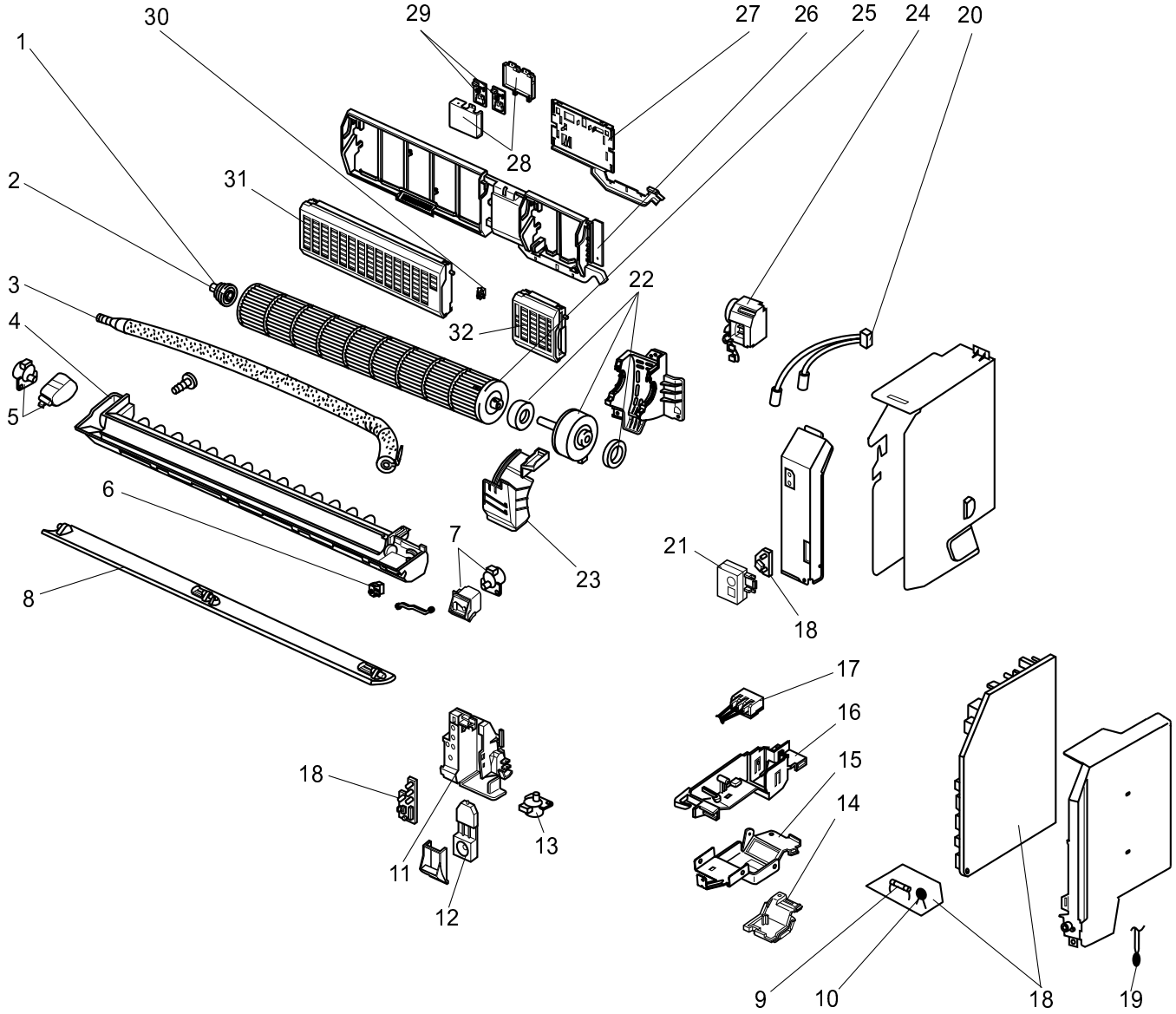
### 12-2. ACCESSORY AND REMOTE CONTROLLER

9	G	E12 913 426	REMOTE CONTROLLER		1	1	1	1	KM05A
10	G	E12 527 083	REMOTE CONTROLLER HOLDER		1	1	1	1	

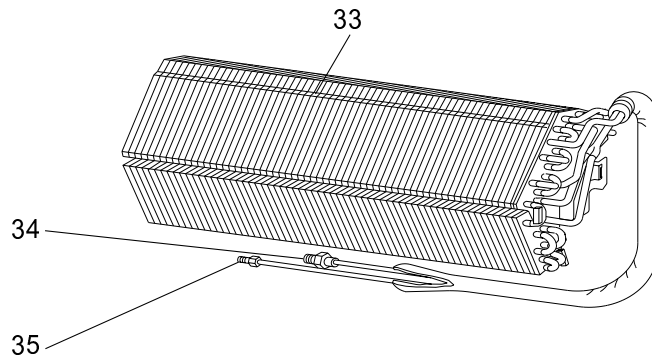
# RoHS PARTS LIST (RoHS compliant)

MSZ-FA25VA  
MSZ-FA35VA

## 12-3. INDOOR UNIT ELECTRICAL PARTS AND FUNCTIONAL PARTS



## 12-4. INDOOR UNIT HEAT EXCHANGER



# RoHS PARTS LIST (RoHS compliant)

## 12-3. INDOOR UNIT ELECTRICAL PARTS AND FUNCTIONAL PARTS

No.	RoHS	Part No.	Part name	Symbol in Wiring Diagram	Q'ty/unit				Remarks
					MSZ-FA25VA-		MSZ-FA35VA-		
					E2	E3	E2	E3	
1	G	E12 751 509	BEARING MOUNT		1	1	1	1	
2	G	E12 001 504	SLEEVE BEARING		1	1	1	1	
3	G	E12 897 702	DRAIN HOSE		1	1	1	1	
4	G	E12 913 235	NOZZLE ASSEMBLY		1	1	1	1	
5	G	E12 897 303	VANE MOTOR UNIT (HORIZONTAL)	MV1	1	1	1	1	UP & DOWN
6	G	E12 897 316	INTERLOCK SWITCH(FAN)		1	1	1	1	
7	G	E12 913 303	VANE MOTOR UNIT (VERTICAL)	MV2	1	1	1	1	RIGHT & LEFT
8	G	E12 913 040	HORIZONTAL VANE		1	1	1	1	
9	G	E12 A49 382	FUSE	F11	1	1	1	1	T3.15AL250V
10	G	E12 661 385	VARISTOR	NR11	1	1	1	1	
11	G	E12 913 095	POWER MONITOR RECEIVER P.C. BOARD HOLDER		1	1	1	1	
12	G	E12 913 391	i-see Sensor	RR	1	1	1	1	
13	G	E12 914 303	i-see Sensor MOTOR	MT	1	1	1	1	
14	G	E12 897 784	VA CLAMP		1	1	1	1	
15	G	E12 897 780	TERMINAL BLOCK COVER		1	1	1	1	
16	G	E12 897 779	TERMINAL BLOCK HOLDER		1	1	1	1	
17	G	E12 913 375	TERMINAL BLOCK	TB	1	1	1	1	
18	G	E12 B42 452	ELECTRONIC CONTROL P.C. BOARD *1		1	1			AUTO RESTART
	G	E12 B43 452	ELECTRONIC CONTROL P.C. BOARD *1				1	1	AUTO RESTART
19	G	E12 897 308	ROOM TEMPERATURE THERMISTOR	RT11	1	1	1	1	
20	G	E12 913 307	INDOOR COIL THERMISTOR	RT12, RT13	1	1			
	G	E12 914 307	INDOOR COIL THERMISTOR	RT12, RT13			1	1	
21	G	E12 913 782	SWITCH HOLDER		1	1	1	1	
22	G	E12 915 300	INDOOR FAN MOTOR *2	MF	1	1	1	1	RC0J40-□□ or RC0J30-□□
23	G	E12 897 333	MOTOR BAND		1	1	1	1	
24	G	E12 898 303	FRONT PANEL DRIVING MOTOR	MP	1	1	1	1	
25	G	E12 897 302	LINE FLOW FAN		1	1	1	1	
26	G	E12 913 775	PLASMA ELEMENT HOLDER		1	1	1	1	
27	G	E12 913 776	PLASMA UNIT COVER		1	1	1	1	
28	G	E12 913 777	PLASMA ELECTRICAL BOX		1	1	1	1	
29	G	E12 897 440	PLASMA POWER P.C. BOARD		2	2	2	2	
30	G	E12 898 316	SAFETY DEVICE (PLASMA UNIT)		1	1	1	1	
31	G	E12 913 774	PLASMA AIR PURIFYING FILTER UNIT	PLASMA_A	1	1	1	1	
32	G	E12 914 774	PLASMA DEODORIZING FILTER UNIT	PLASMA_D	1	1	1	1	

\*1 Including SW P.C. BOARD and POWER MONITOR RECEIVER P.C. BOARD

\*2 Including FAN MOTOR RUBBER MOUNT (2 PCS/SET)

## 12-4. INDOOR UNIT HEAT EXCHANGER

33	G	E12 913 620	INDOOR HEAT EXCHANGER		1	1			
	G	E12 914 620	INDOOR HEAT EXCHANGER				1	1	
34	G	E12 815 666	UNION (GAS)		1	1	1	1	φ9.52
35	G	E12 151 667	UNION (LIQUID)		1	1	1	1	φ6.35



**13-1. DEODORIZING CERAMIC FILTER**

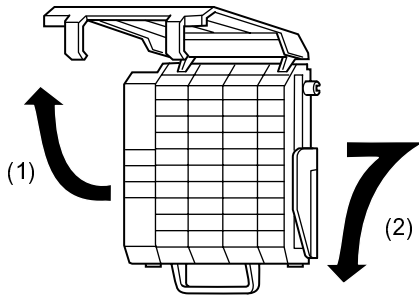
Replacement of the deodorizing ceramic filter(about once every 6 years)

Deodorizing ceramic filter is installed inside PLASMA DEODORIZING filter unit. The filter is fragile. Handle it with care.

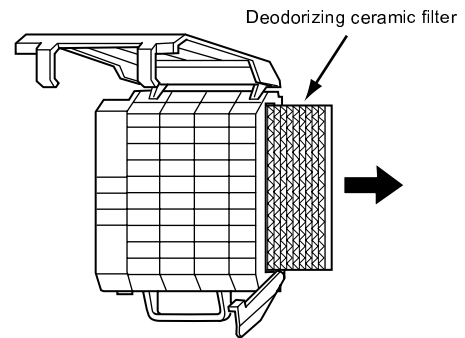
**NOTE:** PLASMA DEODORIZING filter unit may not operate properly if the deodorizing ceramic filter is not installed.

Be sure to install the deodorizing ceramic filter.

- (1) Release the two knobs to open the filter unit.
- (2) Pull the side knobs outward and then forward to remove, as illustrated below.



- (3) Pull out the deodorizing ceramic filter from the side of the filter unit.



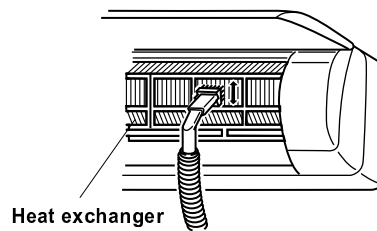
- (4) Install the deodorizing ceramic filter by following removal procedure in reverse.

Model	Part No.
MSZ-FA25VA MSZ-FA35VA	MAC-305FT-E

**13-2. QUICK CLEAN KIT**

- You can sweep the surface of heat exchanger if you install the special-made brush to your vacuum cleaner.

Model	Part No.	
MSZ-FA25VA MSZ-FA35VA	MAC-093SS-E	







HEAD OFFICE: TOKYO BLDG., 2-7-3, MARUNOUCHI, CHIYODA-KU, TOKYO 100-8310, JAPAN

© Copyright 2005 MITSUBISHI ELECTRIC ENGINEERING CO.,LTD

Distributed in Jan. 2007. No. OB371 REVISED EDITION-C 6

Distributed in May 2006. No. OB371 REVISED EDITION-B 6

Distributed in Jan. 2006. No. OB371 REVISED EDITION-A 6

Distributed in Jan. 2005. No. OB371 6

Made in Japan

New publication, effective Jan. 2007  
Specifications subject to change without notice.