

Revision C:

- 3.SPECIFICATION has been corrected.

Please void OB378 REVISED EDITION-B.

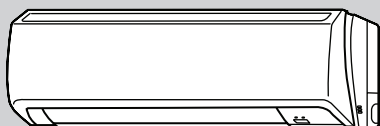
INDOOR UNIT SERVICE MANUAL

**No. OB378
REVISED EDITION-C**

Wireless type Models

MSZ-GA22VA	■ E1
MSZ-GA22VA	■ E2
MSZ-GA22VA	■ E3
MSZ-GA25VA	■ E1
MSZ-GA25VA	■ E2
MSZ-GA25VA	■ E3
MSZ-GA35VA	■ E1
MSZ-GA35VA	■ E2
MSZ-GA35VA	■ E3

Outdoor unit service manual
MUZ-GA·VA Series (OB379)
MXZ-A·VA Series (OB377)
MXZ-8A140VA₁ (OC316)



CONTENTS

1. TECHNICAL CHANGES	2
2. PART NAMES AND FUNCTIONS	3
3. SPECIFICATION	5
4. NOISE CRITERIA CURVES	6
5. OUTLINES AND DIMENSIONS	7
6. WIRING DIAGRAM	8
7. REFRIGERANT SYSTEM DIAGRAM	8
8. SERVICE FUNCTIONS	9
9. TROUBLESHOOTING	10
10. DISASSEMBLY INSTRUCTIONS	24
11. PARTS LIST	27
12. RoHS PARTS LIST	31
13. OPTIONAL PARTS	34

NOTE:

RoHS compliant products have <G> mark on the spec name plate.
For servicing of RoHS compliant products, refer to the RoHS Parts List.



11

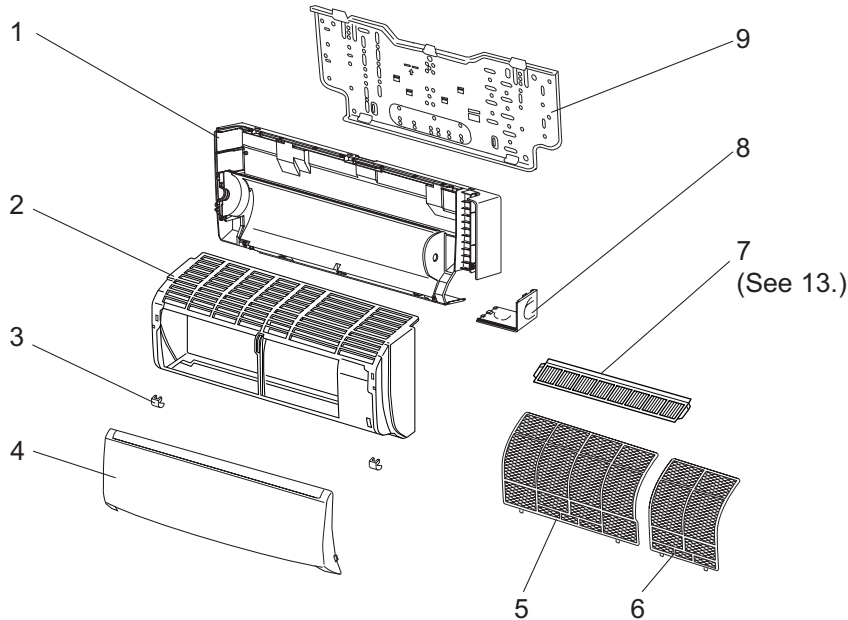
PARTS LIST (non-RoHS compliant)

MSZ-GA22VA

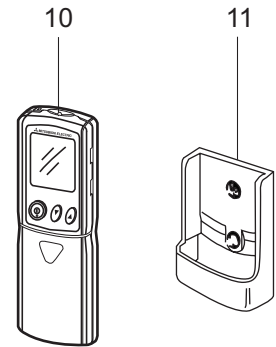
MSZ-GA25VA

MSZ-GA35VA

11-1. INDOOR UNIT STRUCTURAL PARTS



11-2. ACCESSORY AND REMOTE CONTROLLER



11-1. INDOOR UNIT STRUCTURAL PARTS

No.	Part No.	Part name	Symbol in Wiring Diagram	Q'ty/unit						Remarks
				MSZ-GA22VA-		MSZ-GA25VA-		MSZ-GA35VA-		
				E1	E2	E1	E2	E1	E2	
1	E02 897 234	BOX		1		1		1		
	E02 A32 234	BOX			1		1		1	
2	E02 915 000	PANEL ASSEMBLY		1	1	1	1	1	1	Including No.3,4
3	E02 913 067	SCREW CAP		2	2	2	2	2	2	2PCS/SET
4	E02 915 010	FRONT PANEL		1	1	1	1	1	1	
5	E02 915 100	CATECHIN AIR FILTER (LEFT)		1	1	1	1	1	1	
6	E02 916 100	CATECHIN AIR FILTER (RIGHT)		1	1	1	1	1	1	
7	—————	AIR CLEANING FILTER		1	1	1	1	1	1	MAC-415FT-E
8	E02 913 975	CORNER BOX (RIGHT)		1		1		1		
	E02 A32 975	CORNER BOX (RIGHT)			1		1		1	
9	E02 913 970	INSTALLATION PLATE		1	1	1	1	1	1	

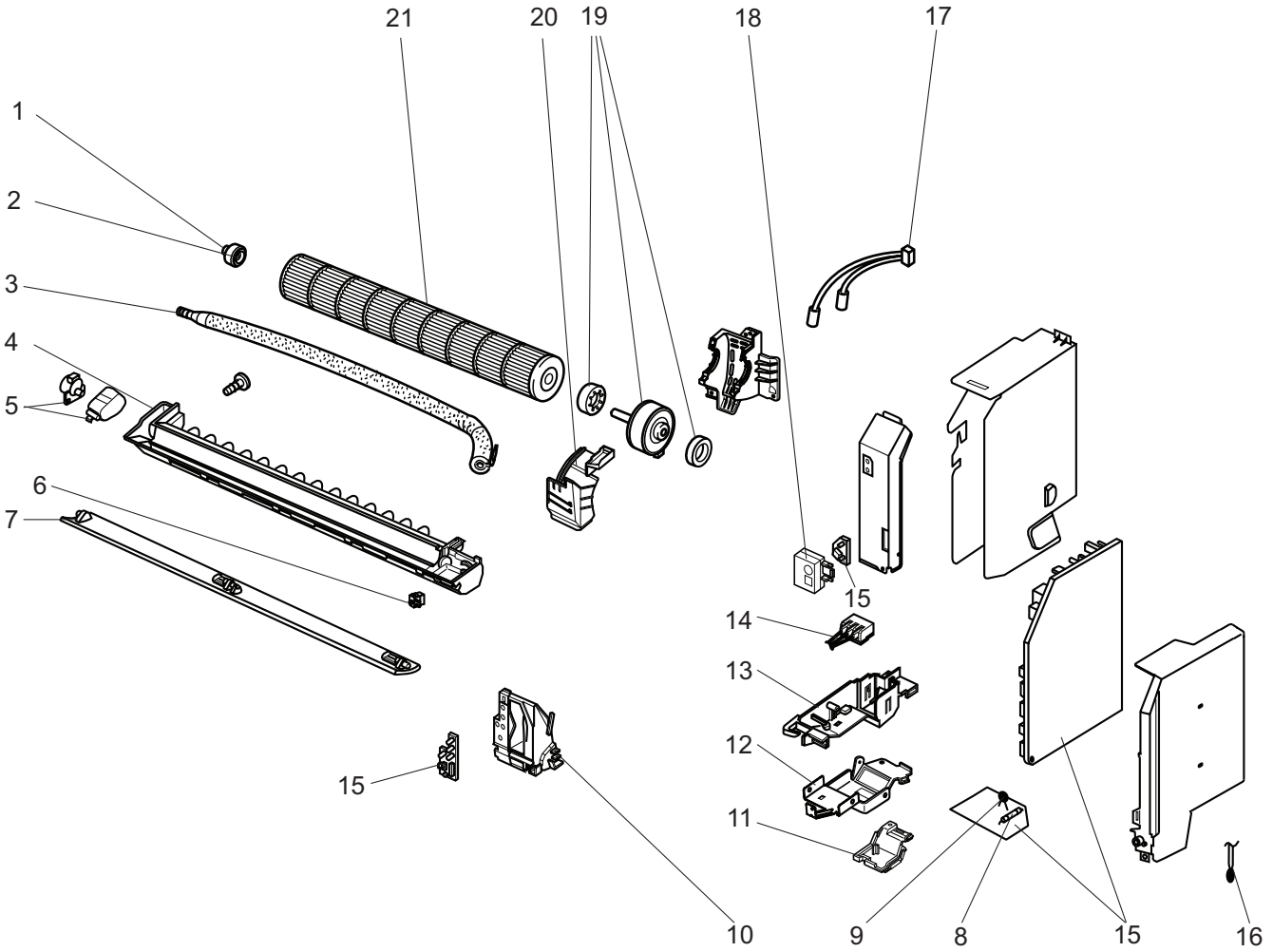
11-2. ACCESSORY AND REMOTE CONTROLLER

10	E02 915 426	REMOTE CONTROLLER		1	1	1	1	1	1	KM05B
11	E02 527 083	REMOTE CONTROLLER HOLDER		1	1	1	1	1	1	

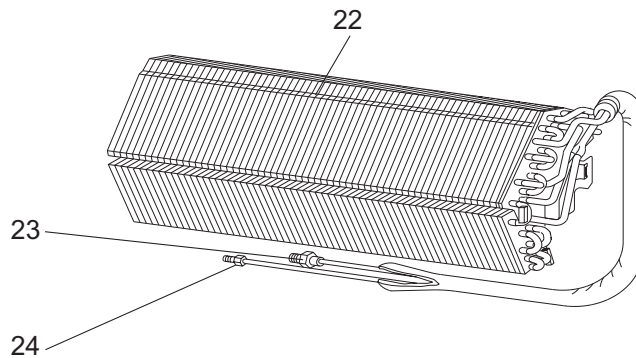
PARTS LIST (non-RoHS compliant)

MSZ-GA22VA
MSZ-GA25VA
MSZ-GA35VA

11-3. INDOOR UNIT ELECTRICAL PARTS AND FUNCTIONAL PARTS



11-4. INDOOR UNIT HEAT EXCHANGER



PARTS LIST (non-RoHS compliant)

11-3. INDOOR UNIT ELECTRICAL PARTS AND FUNCTIONAL PARTS

No.	Part No.	Part name	Symbol in Wiring Diagram	Q'ty/unit						Remarks
				MSZ-GA22VA-		MSZ-GA25VA-		MSZ-GA35VA-		
				E1	E2	E1	E2	E1	E2	
1	E02 751 509	BEARING MOUNT		1	1	1	1	1	1	
2	E02 001 504	SLEEVE BEARING		1	1	1	1	1	1	
3	E02 897 702	DRAIN HOSE		1	1	1	1	1	1	
4	E02 915 235	NOZZLE ASSEMBLY		1	1	1	1	1	1	
5	E02 897 303	VANE MOTOR UNIT (HORIZONTAL)	MV	1	1	1	1	1	1	UP & DOWN
6	E02 897 316	INTERLOCK SWITCH(FAN)		1	1	1	1	1	1	
7	E02 913 040	HORIZONTAL VANE		1	1	1	1	1	1	
8	E02 127 382	FUSE	F11	1		1		1		T3.15AL250V
	E02 A49 382	FUSE	F11		1		1		1	T3.15AL250V
9	E02 661 385	VARISTOR	NR11	1	1	1	1	1	1	
10	E02 915 095	POWER MONITOR RECEIVER P.C. BOARD HOLDER		1	1	1	1	1	1	
11	E02 897 784	V.A. CLAMP		1	1	1	1	1	1	
12	E02 897 780	TERMINAL BLOCK COVER		1	1	1	1	1	1	
13	E02 897 779	TERMINAL BLOCK HOLDER		1	1	1	1	1	1	
14	E02 913 375	TERMINAL BLOCK	TB	1	1	1	1	1	1	
15	E02 915 452	ELECTRONIC CONTROL P.C. BOARD *1		1	1					AUTO RESTART
	E02 916 452	ELECTRONIC CONTROL P.C. BOARD *1				1	1			AUTO RESTART
	E02 917 452	ELECTRONIC CONTROL P.C. BOARD *1						1	1	AUTO RESTART
16	E02 897 308	ROOM TEMPERATURE THERMISTOR	RT11	1	1	1	1	1	1	
17	E02 913 307	INDOOR COIL THERMISTOR	RT12, RT13	1	1	1	1	1	1	
18	E02 915 782	SWITCH HOLDER		1	1	1	1	1	1	
19	E02 915 300	INDOOR FAN MOTOR *2	MF	1	1	1	1	1	1	RC0J30- □ □
20	E02 897 333	MOTOR BAND		1	1	1	1	1	1	
21	E02 897 302	LINE FLOW FAN		1	1	1	1	1	1	

*1 Including SW P.C. BOARD and POWER MONITOR RECEIVER P.C. BOARD

*2 Including FAN MOTOR RUBBER MOUNT (2 PCS/SET)

11-4. INDOOR UNIT HEAT EXCHANGER

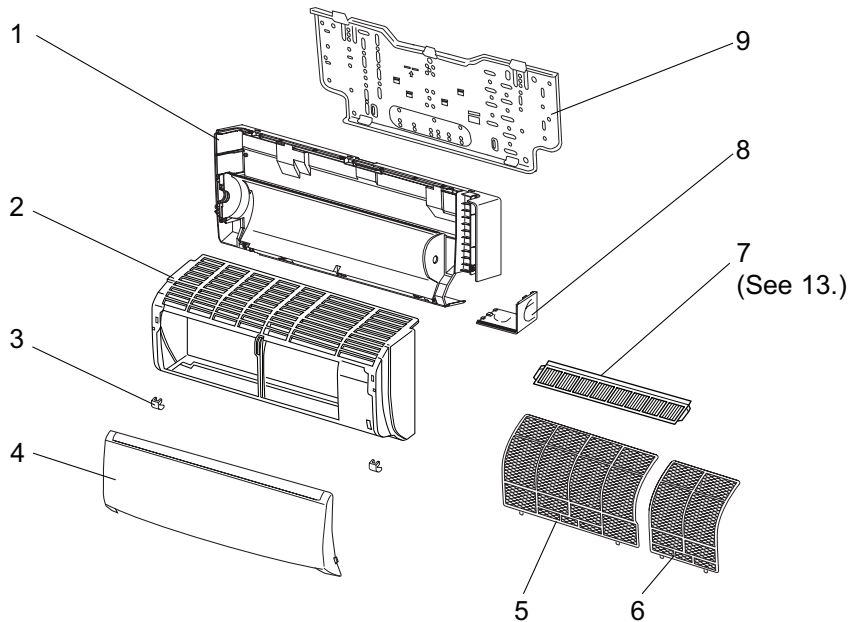
22	E02 913 620	INDOOR HEAT EXCHANGER		1	1	1	1	1	1	
23	E02 815 666	UNION (GAS)		1	1	1	1	1	1	φ9.52
24	E02 151 667	UNION (LIQUID)		1	1	1	1	1	1	φ6.35

12

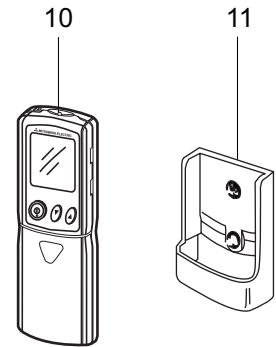
RoHS PARTS LIST (RoHS compliant)

MSZ-GA22VA
MSZ-GA25VA
MSZ-GA35VA

12-1. INDOOR UNIT STRUCTURAL PARTS



12-2. ACCESSORY AND REMOTE CONTROLLER



12-1. INDOOR UNIT STRUCTURAL PARTS

No.	RoHS	Part No.	Part name	Symbol in Wiring Diagram	Q'ty/unit						Remarks
					MSZ-GA22VA-		MSZ-GA25VA-		MSZ-GA35VA-		
					E2	E3	E2	E3	E2	E3	
1	G	E12 A32 234	BOX		1	1	1	1	1	1	
2	G	E12 915 000	PANEL ASSEMBLY		1	1	1	1	1	1	Including No.3,4
3	G	E12 913 067	SCREW CAP		2	2	2	2	2	2	2PCS/SET
4	G	E12 915 010	FRONT PANEL		1	1	1	1	1	1	
5	G	E12 915 100	CATECHIN AIR FILTER (LEFT)		1	1	1	1	1	1	
6	G	E12 916 100	CATECHIN AIR FILTER (RIGHT)		1	1	1	1	1	1	
7	G	—————	AIR CLEANING FILTER		1	1	1	1	1	1	MAC-415FT-E
8	G	E12 A32 975	CORNER BOX (RIGHT)		1	1	1	1	1	1	
9	G	E12 913 970	INSTALLATION PLATE		1	1	1	1	1	1	

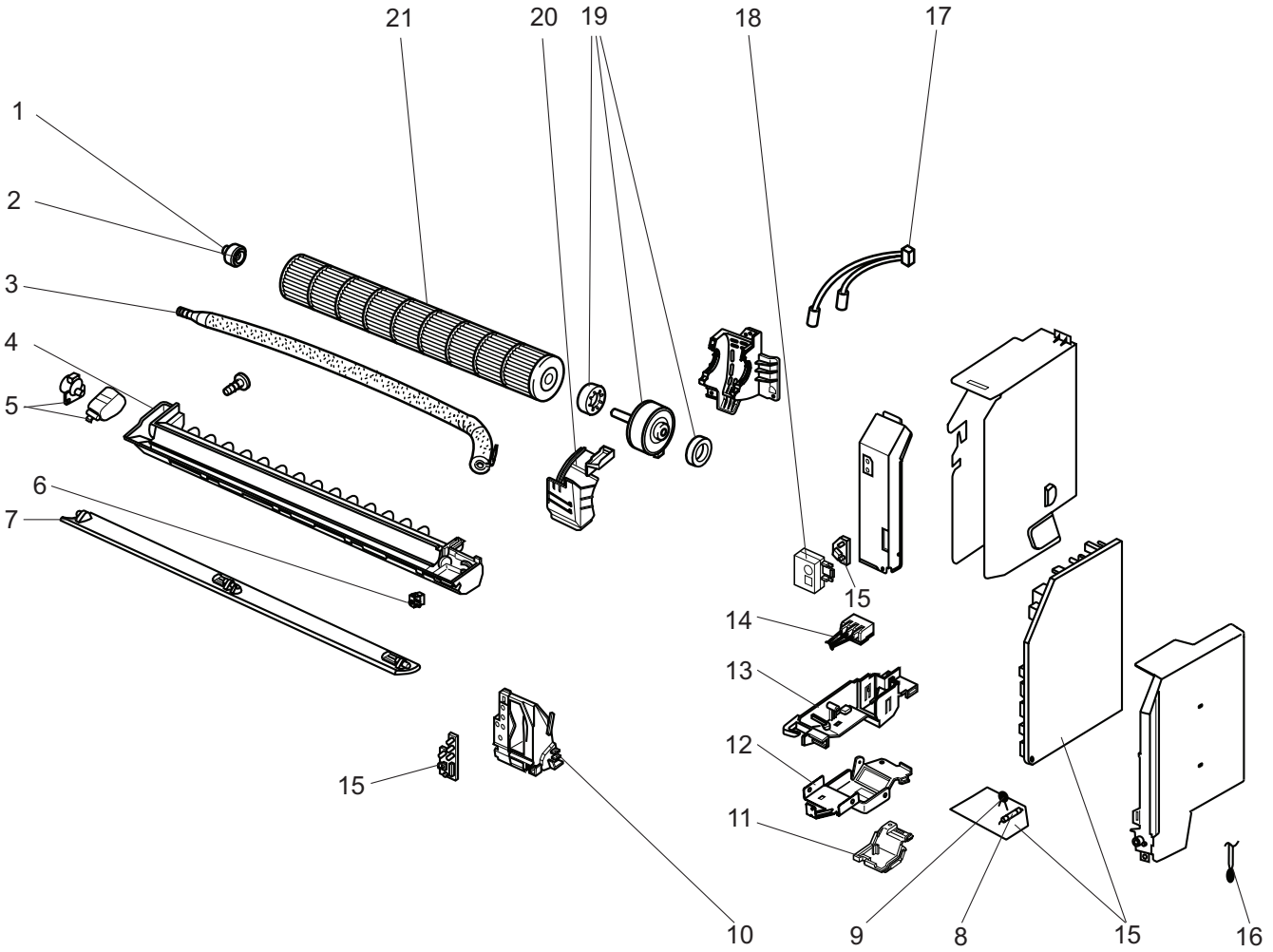
12-2. ACCESSORY AND REMOTE CONTROLLER

10	G	E12 915 426	REMOTE CONTROLLER		1	1	1	1	1	1	KM05B
11	G	E12 527 083	REMOTE CONTROLLER HOLDER		1	1	1	1	1	1	

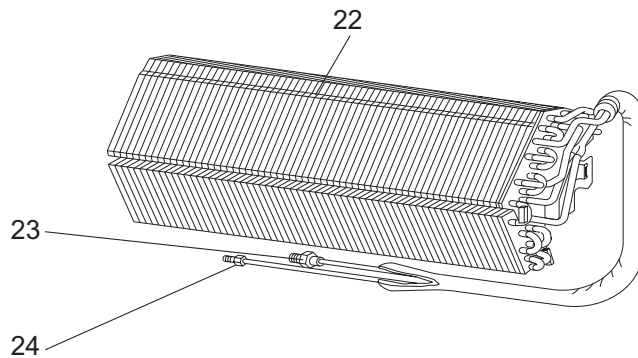
RoHS PARTS LIST (RoHS compliant)

MSZ-GA22VA
MSZ-GA25VA
MSZ-GA35VA

12-3. INDOOR UNIT ELECTRICAL PARTS AND FUNCTIONAL PARTS



12-4. INDOOR UNIT HEAT EXCHANGER



RoHS PARTS LIST (RoHS compliant)

12-3. INDOOR UNIT ELECTRICAL PARTS AND FUNCTIONAL PARTS

No.	RoHS	Part No.	Part name	Symbol in Wiring Diagram	Q'ty/unit						Remarks
					MSZ-GA22VA-		MSZ-GA25VA-		MSZ-GA35VA-		
					E2	E3	E2	E3	E2	E3	
1	G	E12 751 509	BEARING MOUNT		1	1	1	1	1	1	
2	G	E12 001 504	SLEEVE BEARING		1	1	1	1	1	1	
3	G	E12 897 702	DRAIN HOSE		1	1	1	1	1	1	
4	G	E12 915 235	NOZZLE ASSEMBLY		1	1	1	1	1	1	
5	G	E12 897 303	VANE MOTOR UNIT (HORIZONTAL)	MV	1	1	1	1	1	1	UP & DOWN
6	G	E12 897 316	INTERLOCK SWITCH(FAN)		1	1	1	1	1	1	
7	G	E12 913 040	HORIZONTAL VANE		1	1	1	1	1	1	
8	G	E12 A49 382	FUSE	F11	1	1	1	1	1	1	T3.15AL250V
9	G	E12 661 385	VARISTOR	NR11	1	1	1	1	1	1	
10	G	E12 915 095	POWER MONITOR RECEIVER P.C. BOARD HOLDER		1	1	1	1	1	1	
11	G	E12 897 784	V.A. CLAMP		1	1	1	1	1	1	
12	G	E12 897 780	TERMINAL BLOCK COVER		1	1	1	1	1	1	
13	G	E12 897 779	TERMINAL BLOCK HOLDER		1	1	1	1	1	1	
14	G	E12 913 375	TERMINAL BLOCK	TB	1	1	1	1	1	1	
15	G	E12 916 452	ELECTRONIC CONTROL P.C. BOARD *1				1 *3				AUTO RESTART
	G	E12 B39 452	ELECTRONIC CONTROL P.C. BOARD *1		1	1					AUTO RESTART
	G	E12 B40 452	ELECTRONIC CONTROL P.C. BOARD *1				1 *4	1			AUTO RESTART
	G	E12 B41 452	ELECTRONIC CONTROL P.C. BOARD *1						1	1	AUTO RESTART
16	G	E12 897 308	ROOM TEMPERATURE THERMISTOR	RT11	1	1	1	1	1	1	
17	G	E12 913 307	INDOOR COIL THERMISTOR	RT12, RT13	1	1	1	1	1	1	
18	G	E12 915 782	SWITCH HOLDER		1	1	1	1	1	1	
19	G	E12 915 300	INDOOR FAN MOTOR *2	MF	1	1	1	1	1	1	RC0J30- □ □
20	G	E12 897 333	MOTOR BAND		1	1	1	1	1	1	
21	G	E12 897 302	LINE FLOW FAN		1	1	1	1	1	1	

*1 Including SW P.C. BOARD and POWER MONITOR RECEIVER P.C. BOARD

*2 Including FAN MOTOR RUBBER MOUNT (2 PCS/SET)

*3 Serial number : ~6024700

*4 Serial number : 6024701~

Refer to 3.SPECIFICATION as for difference between *3 and *4.

12-4. INDOOR UNIT HEAT EXCHANGER

22	G	E12 913 620	INDOOR HEAT EXCHANGER		1	1	1	1	1	1	
23	G	E12 815 666	UNION (GAS)		1	1	1	1	1	1	φ9.52
24	G	E12 151 667	UNION (LIQUID)		1	1	1	1	1	1	φ6.35

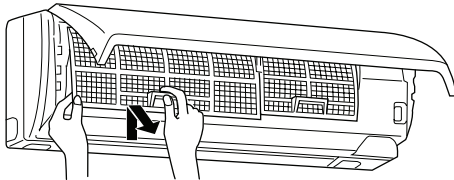
13-1. AIR CLEANING FILTER (ANTI-ALLERGY ENZYME FILTER)

- AIR CLEANING FILTER removes fine dust of 0.01 micron from air by means of static electricity.
- Normal life of AIR CLEANING FILTER is 1 year.
If AIR CLEANING FILTER is to be washed, soak AIR CLEANING FILTER in water (when showing dirt, in lukewarm water) and rinse it delicately, without removing the filter from the frame about once every 3 months.
- Clogged AIR CLEANING FILTER may reduce the air conditioner capacity or cause frost on the air outlet.
- Do not remove or attach AIR CLEANING FILTER during unit operation.

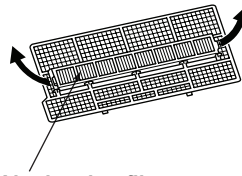
Model	Part No.
MSZ-GA22VA MSZ-GA25VA MSZ-GA35VA	MAC-415FT-E

Replacement of the air cleaning filter

(1) Remove the catechin air filter(left one)
The air cleaning filter is not attached to the right side catechin air filter



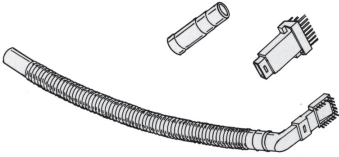
(2) Remove the air cleaning filter(Blue bellows type) from the catechin air filter.

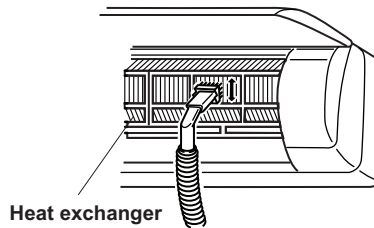


Air cleaning filter (Blue bellows type)

13-2. QUICK CLEAN KIT

- You can sweep the surface of heat exchanger if you install the special-made brush to your vacuum cleaner.

Model	Part No.	
MSZ-GA22VA MSZ-GA25VA MSZ-GA35VA	MAC-093SS-E	





HEAD OFFICE: TOKYO BLDG., 2-7-3, MARUNOUCHI, CHIYODA-KU, TOKYO 100-8310, JAPAN

© Copyright 2005 MITSUBISHI ELECTRIC ENGINEERING CO.,LTD
Distributed in Apr. 2007. No. OB378 REVISED EDITION-C 6
Distributed in Jan. 2007. No. OB378 REVISED EDITION-B 6
Distributed in Jan. 2006. No. OB378 REVISED EDITION-A 6
Distributed in Jan. 2005. No. OB378 6
Made in Japan

New publication, effective Apr. 2007
Specifications subject to change without notice.