

Revision:C

• PARTS LIST and RoHS PARTS LIST have been changed.

Please void OB388 REVISED EDITION-B

INDOOR UNIT

SERVICE MANUAL

No. OB388
REVISED EDITION-C

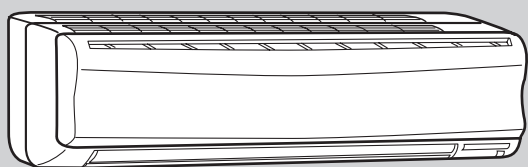
**Wireless type
Models**

MSZ-GA50VA **E1**

MSZ-GA60VA **E1**

MSZ-GA71VA **E1**

Outdoor unit service manual
MUZ-GA•VA Series (OB389)
MXZ-A•VA Series (OB377)



CONTENTS

1. TECHNICAL CHANGES	2
2. PART NAMES AND FUNCTIONS	3
3. SPECIFICATION	5
4. NOISE CRITERIA CURVES	6
5. OUTLINES AND DIMENSIONS	7
6. WIRING DIAGRAM	8
7. REFRIGERANT SYSTEM DIAGRAM	9
8. SERVICE FUNCTIONS	10
9. TROUBLESHOOTING	12
10. DISASSEMBLY INSTRUCTIONS	24
11. PARTS LIST	27
12. RoHS PARTS LIST	28
13. OPTIONAL PARTS	30

NOTE:

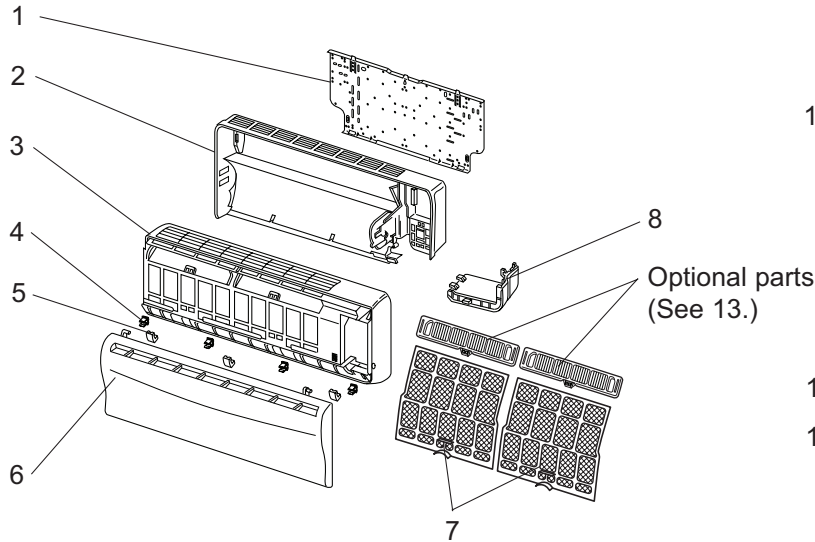
RoHS compliant products have <G> mark on the spec name plate.
For servicing of RoHS compliant products, refer to the RoHS Parts List.



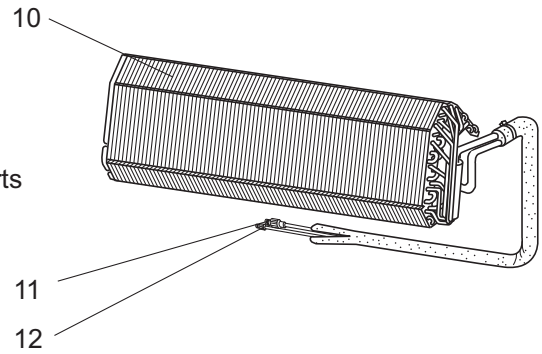
11 PARTS LIST (non-RoHS compliant)

MSZ-GA50VA
MSZ-GA60VA
MSZ-GA71VA

11-1. INDOOR UNIT STRUCTURAL PARTS



11-2. INDOOR UNIT HEAT EXCHANGER



11-1. INDOOR UNIT STRUCTURAL PARTS

Part number that is circled is not shown in the illustration.

No.	Part No.	Part Name	Symbol in Wiring Diagram	Q'ty/unit			Remarks
				MSZ-GA50 VA - E1	MSZ-GA60 VA - E1	MSZ-GA71 VA - E1	
1	E02 527 970	INSTALLATION PLATE		1	1	1	
2	E02 685 234	BOX		1	1	1	
3	E02 888 000	FRONT PANEL ASSEMBLY		1	1	1	Including No.4,5,6
4	E02 408 142	CATCH		4	4	4	4PCS/ SET
5	E02 685 067	SCREW CAP		3	3	3	3PCS/ SET
6	E02 888 010	GRILLE		1	1	1	
7	E02 534 100	CATECHIN AIR FILTER		2	2	2	
8	E02 685 975	CORNER BOX RIGHT		1	1	1	
⑨	E02 918 007	LAMP PANEL		1	1	1	

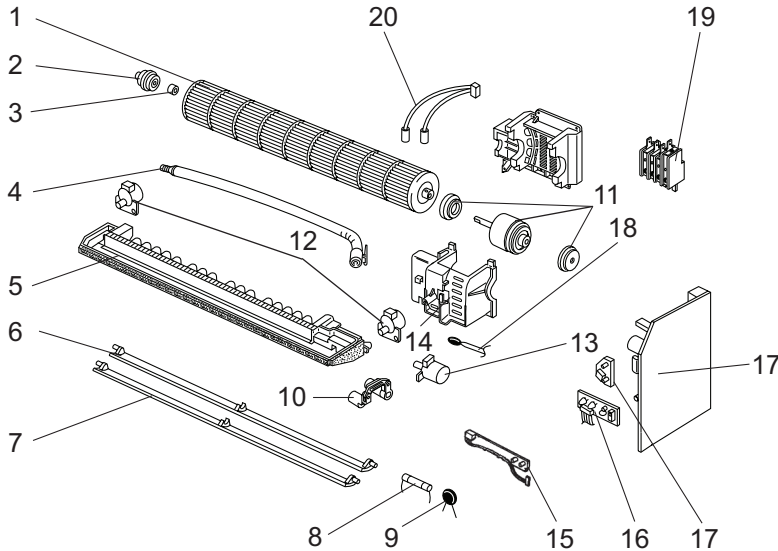
11-2. INDOOR UNIT HEAT EXCHANGER

10	E02 851 620	INDOOR HEAT EXCHANGER		1	1		
	E02 819 620	INDOOR HEAT EXCHANGER				1	
11	E02 179 667	UNION (GAS)		1			φ12.7
	E02 138 666	UNION (GAS)			1	1	φ15.88
12	E02 151 667	UNION (LIQUID)		1	1		φ6.35
	E02 527 667	UNION (LIQUID)				1	φ9.52

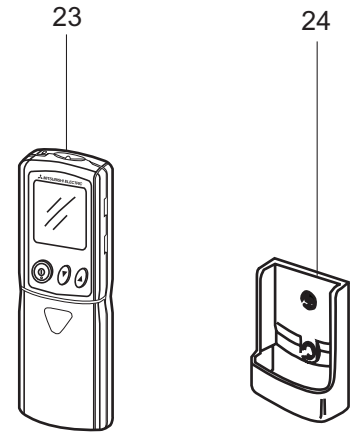
PARTS LIST (non-RoHS compliant)

MSZ-GA50VA
MSZ-GA60VA
MSZ-GA71VA

11-3. INDOOR UNIT FUNCTIONAL PARTS AND ELECTRICAL PARTS



11-4. ACCESSORY AND REMOTE CONTROLLER



11-3. INDOOR UNIT FUNCTIONAL PARTS AND ELECTRICAL PARTS

Part numbers that are circled are not shown in the illustration.

No.	Part No.	Part Name	Symbol in Wiring Diagram	Q'ty/unit			Remarks
				MSZ-GA50 VA - [E1]	MSZ-GA60 VA - [E1]	MSZ-GA71 VA - [E1]	
1	E02 527 302	LINE FLOW FAN		1	1	1	
2	E02 408 509	BEARING MOUNT		1	1	1	
3	E02 001 504	SLEEVE BEARING		1	1	1	
4	E02 408 702	DRAIN HOSE		1	1	1	
5	E02 A87 235	NOZZLE		1	1	1	
6	E02 685 040	VANE UPPER		1	1	1	
7	E02 685 041	VANE LOWER		1	1	1	
8	E02 A49 382	FUSE	F11	1	1	1	3.15A
9	E02 661 385	VARISTOR	NR11	1	1	1	
10	E02 527 034	VANE CRANK SET		1	1	1	
11	E02 918 300	INDOOR FAN MOTOR ASSEMBLY *1	MF	1	1	1	RC0J56 - □□
12	E02 448 303	VANE MOTOR (VERTICAL)	MV2	2	2	2	RIGHT & LEFT
13	E02 408 303	VANE MOTOR (HORIZONTAL)	MV1	1	1	1	UP & DOWN
14	E02 918 333	MOTOR BAND		1	1	1	
15	E02 918 329	DISPLAY P.C. BOARD		1	1	1	
16	E02 918 468	RECEIVER P.C. BOARD		1	1	1	
17	E02 918 452	ELECTRONIC CONTROL P.C. BOARD *2		1			AUTO RESTART
	E02 919 452	ELECTRONIC CONTROL P.C. BOARD *2			1		AUTO RESTART
	E02 920 452	ELECTRONIC CONTROL P.C. BOARD *2				1	AUTO RESTART
18	E02 527 308	ROOM TEMPERATURE THERMISTOR	RT11	1	1	1	
19	E02 918 375	TERMINAL BLOCK	TB	1	1	1	
20	E02 918 307	INDOOR COIL THERMISTOR	RT12, RT13	1	1		
	E02 920 307	INDOOR COIL THERMISTOR	RT12, RT13			1	
⑳	E02 528 034	VANE MOTOR SUPPORT SET(RIGHT)		1	1	1	
㉑	E02 529 034	VANE MOTOR SUPPORT SET(LEFT)		1	1	1	

*1 Including FAN MOTOR RUBBER MOUNT

*2 Including SW P.C. BOARD

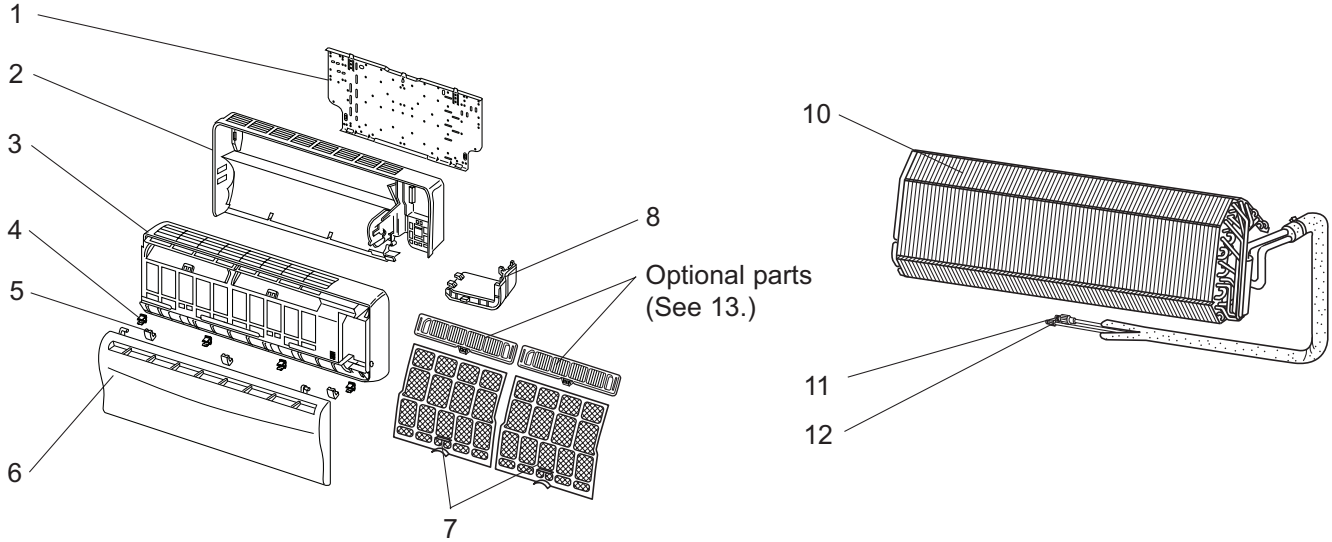
11-4. ACCESSORY AND REMOTE CONTROLLER

23	E02 918 426	REMOTE CONTROLLER		1	1	1	KM05C
24	E02 527 083	REMOTE CONTROLLER HOLDER		1	1	1	

MSZ-GA50VA
MSZ-GA60VA
MSZ-GA71VA

12-1. INDOOR UNIT STRUCTURAL PARTS

12-2. INDOOR UNIT HEAT EXCHANGER



12-1. INDOOR UNIT STRUCTURAL PARTS

Part number that is circled is not shown in the illustration.

No.	RoHS	Part No.	Part Name	Symbol in Wiring Diagram	Q'ty/unit			Remarks
					MSZ-GA50 VA - E1	MSZ-GA60 VA - E1	MSZ-GA71 VA - E1	
1	G	E12 527 970	INSTALLATION PLATE		1	1	1	
2	G	E12 685 234	BOX		1	1	1	
3	G	E12 888 000	FRONT PANEL ASSEMBLY		1	1	1	Including No.4,5,6
4	G	E12 408 142	CATCH		4	4	4	4PCS/ SET
5	G	E12 685 067	SCREW CAP		3	3	3	3PCS/ SET
6	G	E12 888 010	GRILLE		1	1	1	
7	G	E12 534 100	CATECHIN AIR FILTER		2	2	2	1PC/ SET
8	G	E12 685 975	CORNER BOX RIGHT		1	1	1	
9	G	E12 918 007	LAMP PANEL		1	1	1	

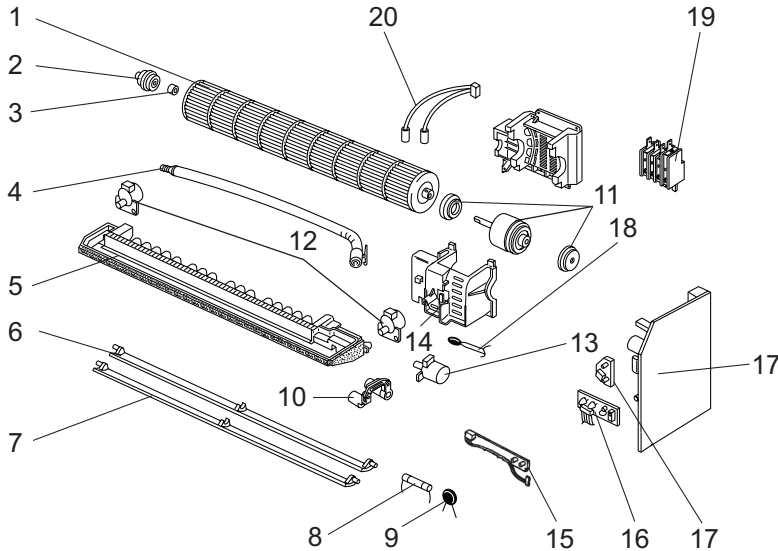
12-2. INDOOR UNIT HEAT EXCHANGER

10	G	E12 851 620	INDOOR HEAT EXCHANGER		1	1		
	G	E12 819 620	INDOOR HEAT EXCHANGER				1	
11	G	E12 179 667	UNION (GAS)		1			φ12.7
	G	E12 138 666	UNION (GAS)			1	1	φ15.88
12	G	E12 151 667	UNION (LIQUID)		1	1		φ6.35
	G	E12 527 667	UNION (LIQUID)				1	φ9.52

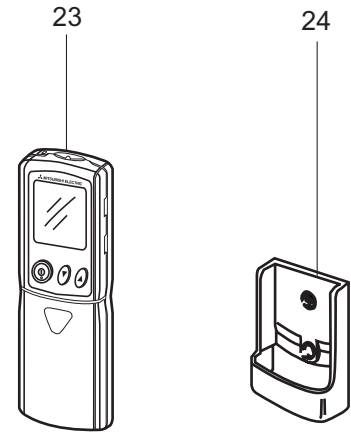
RoHS PARTS LIST (RoHS compliant)

MSZ-GA50VA
MSZ-GA60VA
MSZ-GA71VA

12-3. INDOOR UNIT FUNCTIONAL PARTS AND ELECTRICAL PARTS



12-4. ACCESSORY AND REMOTE CONTROLLER



12-3. INDOOR UNIT FUNCTIONAL PARTS AND ELECTRICAL PARTS

Part numbers that are circled are not shown in the illustration.

No.	RoHS	Part No.	Part Name	Symbol in Wiring Diagram	Q'ty/unit			Remarks
					MSZ-GA50 VA - E1	MSZ-GA60 VA - E1	MSZ-GA71 VA - E1	
1	G	E12 527 302	LINE FLOW FAN		1	1	1	
2	G	E12 408 509	BEARING MOUNT		1	1	1	
3	G	E12 001 504	SLEEVE BEARING		1	1	1	
4	G	E12 408 702	DRAIN HOSE		1	1	1	
5	G	E12 A87 235	NOZZLE		1	1	1	
6	G	E12 685 040	VANE UPPER		1	1	1	
7	G	E12 685 041	VANE LOWER		1	1	1	
8	G	E12 A49 382	FUSE	F11	1	1	1	T3.15AL250V
9	G	E12 661 385	VARISTOR	NR11	1	1	1	
10	G	E12 527 034	VANE CRANK SET		1	1	1	
11	G	E12 918 300	INDOOR FAN MOTOR ASSEMBLY *1	MF	1	1	1	RC0J56 - □□
12	G	E12 448 303	VANE MOTOR (VERTICAL)	MV2	2	2	2	RIGHT & LEFT
13	G	E12 408 303	VANE MOTOR (HORIZONTAL)	MV1	1	1	1	UP & DOWN
14	G	E12 918 333	MOTOR BAND		1	1	1	
15	G	E12 918 329	DISPLAY P.C. BOARD		1	1	1	
16	G	E12 918 468	RECEIVER P.C. BOARD		1	1	1	
17	G	E12 918 452	ELECTRONIC CONTROL P.C. BOARD *2		1			AUTO RESTART
	G	E12 919 452	ELECTRONIC CONTROL P.C. BOARD *2			1		AUTO RESTART
	G	E12 920 452	ELECTRONIC CONTROL P.C. BOARD *2				1	AUTO RESTART
18	G	E12 527 308	ROOM TEMPERATURE THERMISTOR	RT11	1	1	1	
19	G	E12 918 375	TERMINAL BLOCK	TB	1	1	1	
20	G	E12 918 307	INDOOR COIL THERMISTOR	RT12, RT13	1	1		
	G	E12 920 307	INDOOR COIL THERMISTOR	RT12, RT13			1	
21	G	E12 528 034	VANE MOTOR SUPPORT SET(RIGHT)		1	1	1	
22	G	E12 529 034	VANE MOTOR SUPPORT SET(LEFT)		1	1	1	

*1 Including FAN MOTOR RUBBER MOUNT

*2 Including SW P.C. BOARD

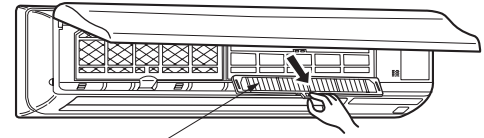
12-4. ACCESSORY AND REMOTE CONTROLLER

23	G	E12 918 426	REMOTE CONTROLLER		1	1	1	KM05C
24	G	E12 527 083	REMOTE CONTROLLER HOLDER		1	1	1	

AIR CLEANING FILTER (ANTI-ALLERGY ENZYME FILTER)

- AIR CLEANING FILTER removes fine dust of 0.01 micron from air by means of static electricity.
- Normal life of AIR CLEANING FILTER is 1 year.
If AIR CLEANING FILTER is to be washed, soak AIR CLEANING FILTER in water (when showing dirt, in lukewarm water) and rinse it delicately, without removing the filter from the frame about once every 3 months.
- Clogged AIR CLEANING FILTER may reduce the air conditioner capacity or cause frost on the air outlet.
- Do not remove or attach AIR CLEANING FILTER during unit operation.

Model	Part No.
MSZ-GA50VA MSZ-GA60VA MSZ-GA71VA	MAC-2300FT



Air cleaning filter
(Anti-allergy enzyme filter:blue bellows type)



HEAD OFFICE: TOKYO BLDG., 2-7-3, MARUNOUCHI, CHIYODA-KU, TOKYO 100-8310, JAPAN

© Copyright 2005 MITSUBISHI ELECTRIC ENGINEERING CO.,LTD

Distributed in Jan. 2007. No.OB388 REVISED EDITION-C 6

Distributed in May 2006. No.OB388 REVISED EDITION-B 6

Distributed in Sep. 2006. No.OB388 REVISED EDITION-A 6

Distributed in Jan. 2005. No.OB388 6

Made in Japan

New publication, effective Jan. 2007
Specifications subject to change without notice.