

Revision J:

- FAILURE MODE RECALL FUNCTION has been corrected.
- Some descriptions have been modified.

Please void OB377 REVISED EDITION-I.

OUTDOOR UNIT SERVICE MANUAL



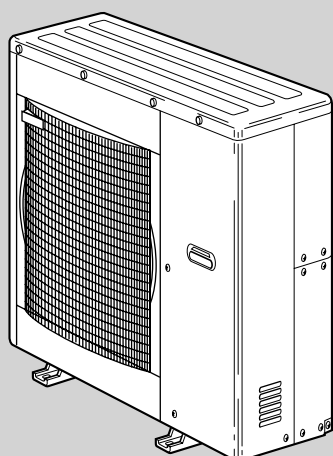
**No. OB377
REVISED EDITION-J**

Models

MXZ-2A30VA	- E1
MXZ-2A30VA	- E2
MXZ-2A40VA	- E1
MXZ-2A40VA	- E2
MXZ-2A52VA	- E1
MXZ-2A52VA	- E2
MXZ-3A54VA	- E1
MXZ-3A54VA	- E2
MXZ-3A54VA	- E3
MXZ-3A54VA	- E4
MXZ-3A54VA	- E5
MXZ-3A54VA	- E6
MXZ-3A54VA	- E7
MXZ-4A71VA	- E1

MXZ-4A71VA	- E2
MXZ-4A71VA	- E3
MXZ-4A71VA	- E4
MXZ-4A71VA	- E5
MXZ-4A71VA	- E6
MXZ-4A71VA	- E7
MXZ-4A80VA	- E1
MXZ-4A80VA	- E2
MXZ-5A100VA	- E1

Indoor unit service manual
 MSZ-FA•VA Series (OB371)
 MSZ-GA•VA Series (OB378, OB388)
 MSZ-CB•VA Series (OB441)
 MSZ-GC•VA Series (OBH468)
 MSZ-GE•VA Series (OBH515)
 MSZ-FD•VA Series (OBH488)



MXZ-4A80VA-E1

CONTENTS

1. TECHNICAL CHANGES	2
2. PART NAMES AND FUNCTIONS	8
3. INDOOR/OUTDOOR CORRESPONDENCE TABLE	10
4. INDOOR UNITS COMBINATION	14
5. SPECIFICATION	61
6. NOISE CRITERIA CURVES	66
7. OUTLINES AND DIMENSIONS	68
8. WIRING DIAGRAM	75
9. REFRIGERANT SYSTEM DIAGRAM	87
10. PERFORMANCE CURVES	97
11. ACTUATOR CONTROL	115
12. SERVICE FUNCTIONS	116
13. TROUBLESHOOTING	120
14. DISASSEMBLY INSTRUCTIONS	147
15. PARTS LIST	162
16. RoHS PARTS LIST	174
17. OPTIONAL PARTS	BACK COVER

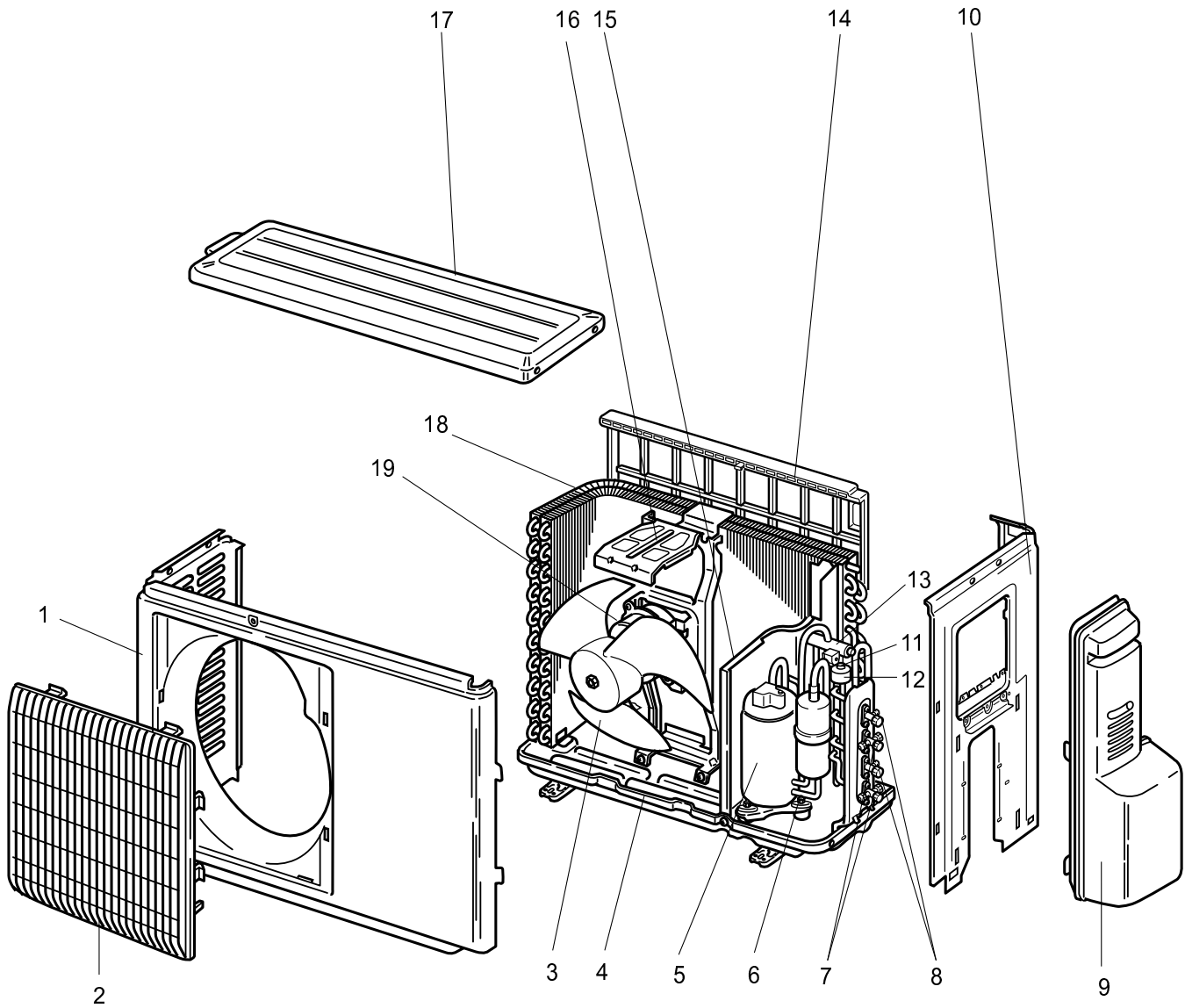
NOTE:

- RoHS compliant products have <G> mark on the spec name plate.
- For servicing of RoHS compliant products, refer to the RoHS Parts List



MXZ-2A40VA - E1 MXZ-2A52VA - E1

15-1. OUTDOOR UNIT STRUCTURAL PARTS AND FUNCTIONAL PARTS

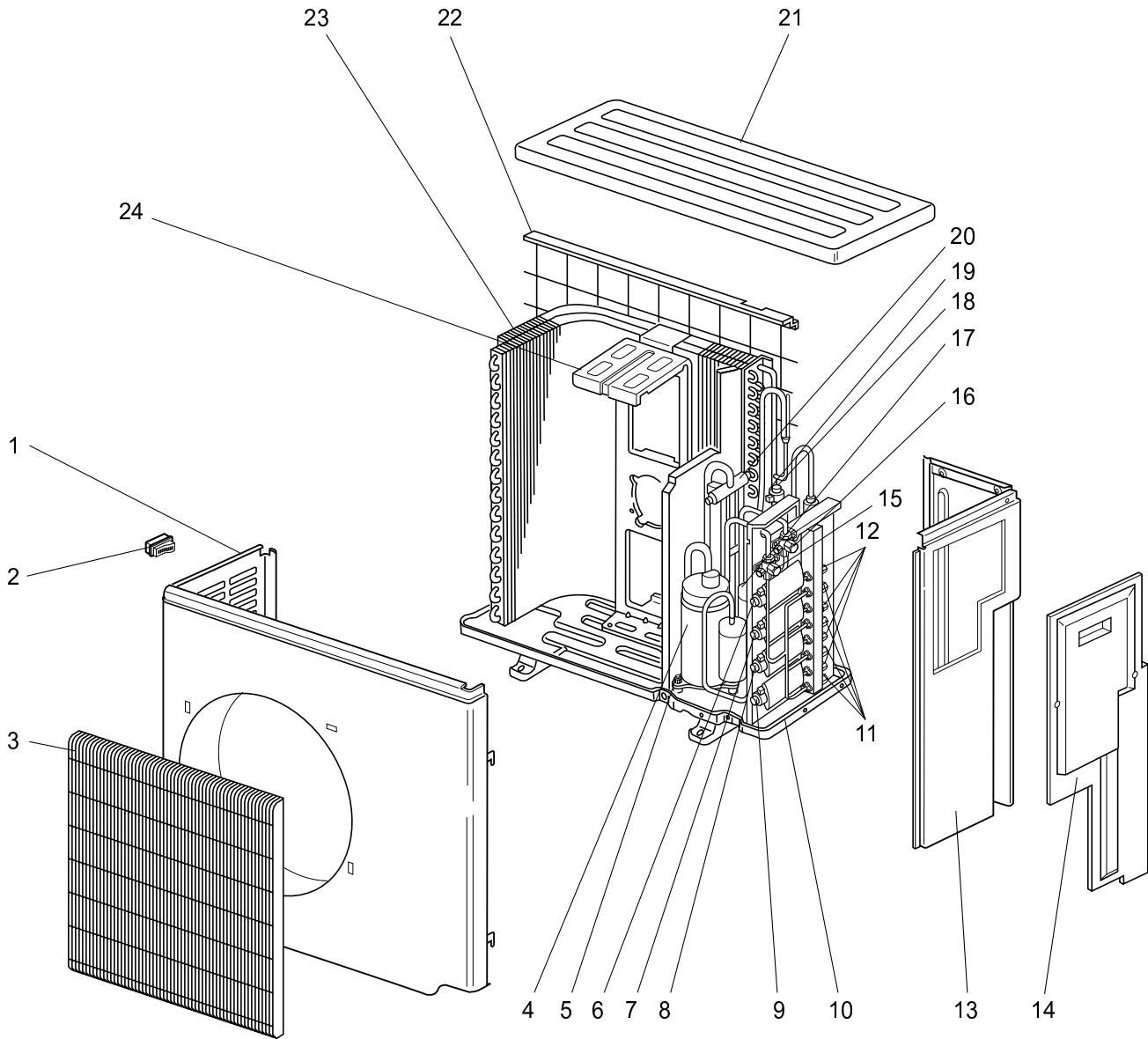


PARTS LIST (non-RoHS compliant)

MXZ-□A54VA - E1 □ E2

MXZ-4A□1VA - E1 □ E2

15-4. OUTDOOR UNIT STRUCTURAL PARTS AND FUNCTIONAL PARTS

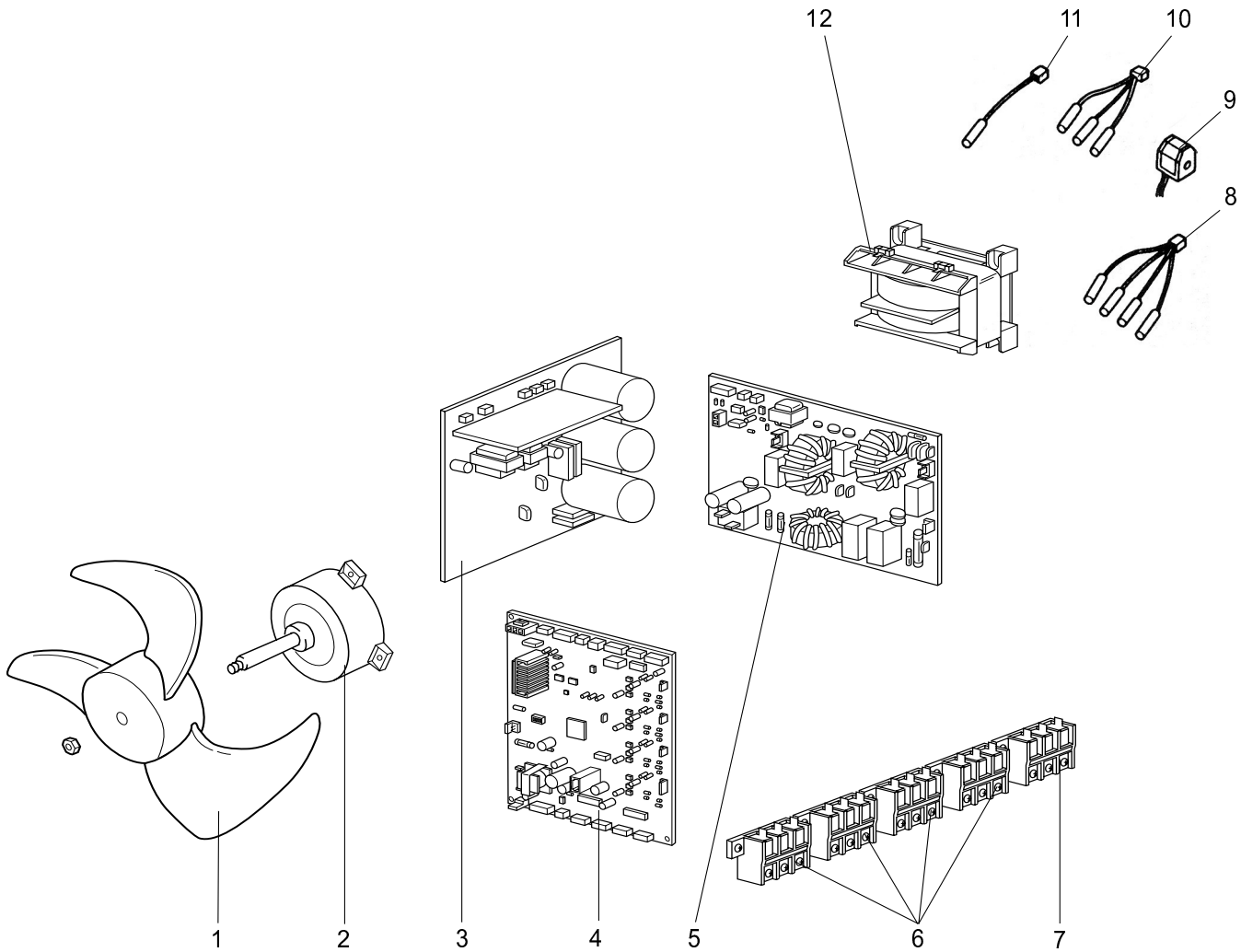


PARTS LIST (non-RoHS compliant)

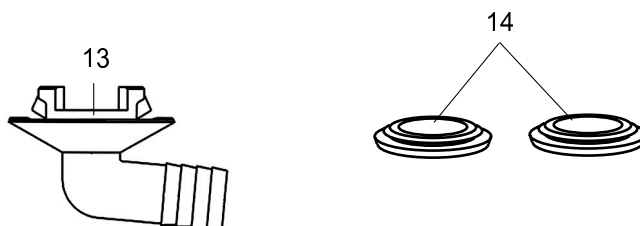
MXZ-□A54VA - E1 □ E2

MXZ-4A□1VA - E1 □ E2

15-5. OUTDOOR UNIT FUNCTIONAL PARTS AND ELECTRICAL PARTS



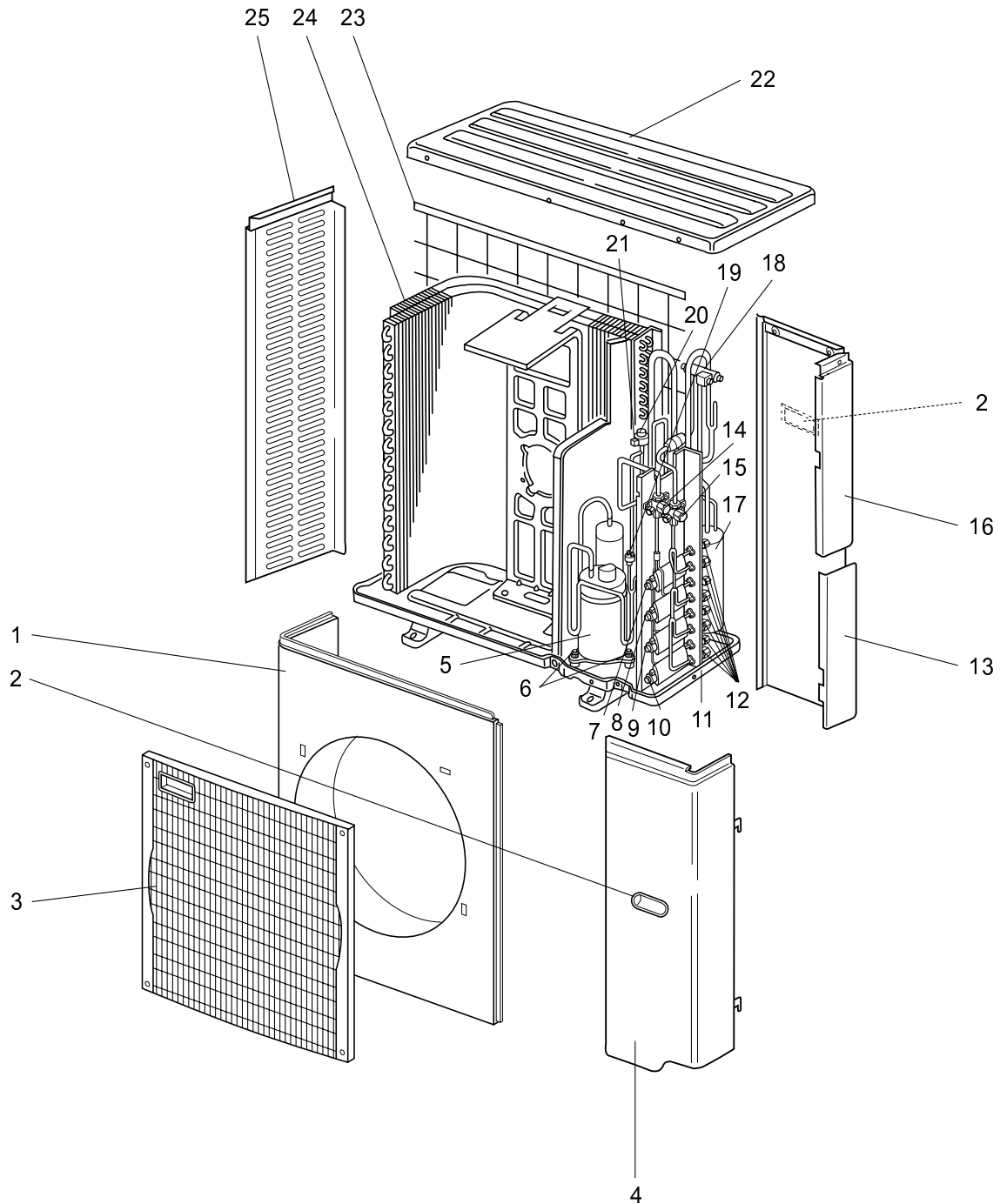
15-□ ACCESSOR □



PARTS LIST (non-RoHS compliant)

MXZ-4A□0VA - E1

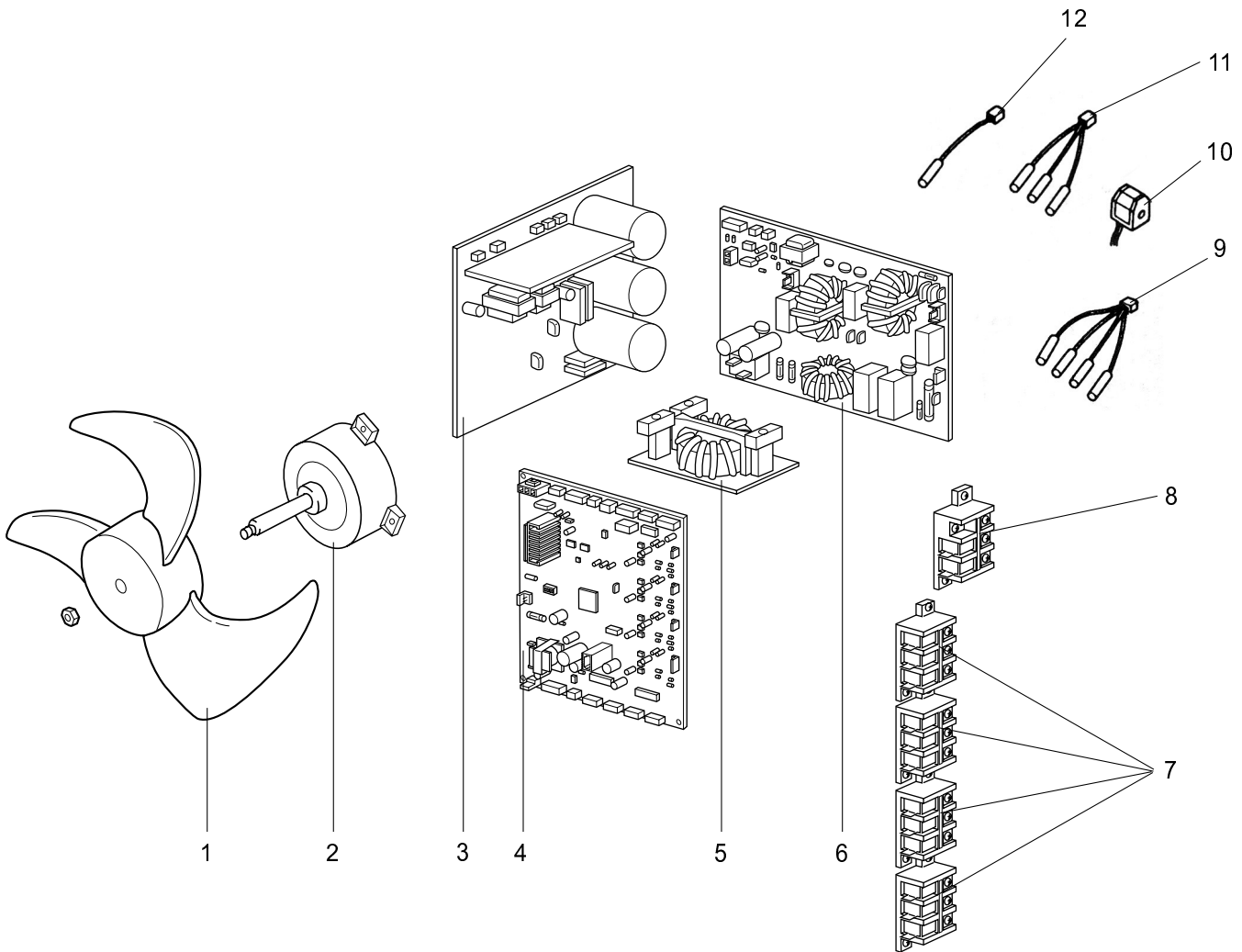
15-□. OUTDOOR UNIT STRUCTURAL PARTS AND FUNCTIONAL PARTS



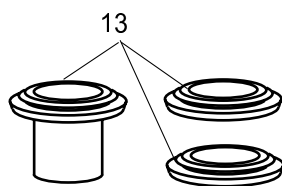
PARTS LIST (non-RoHS compliant)

MXZ-4A□0VA - E1

15-□. OUTDOOR UNIT FUNCTIONAL PARTS AND ELECTRICAL PARTS

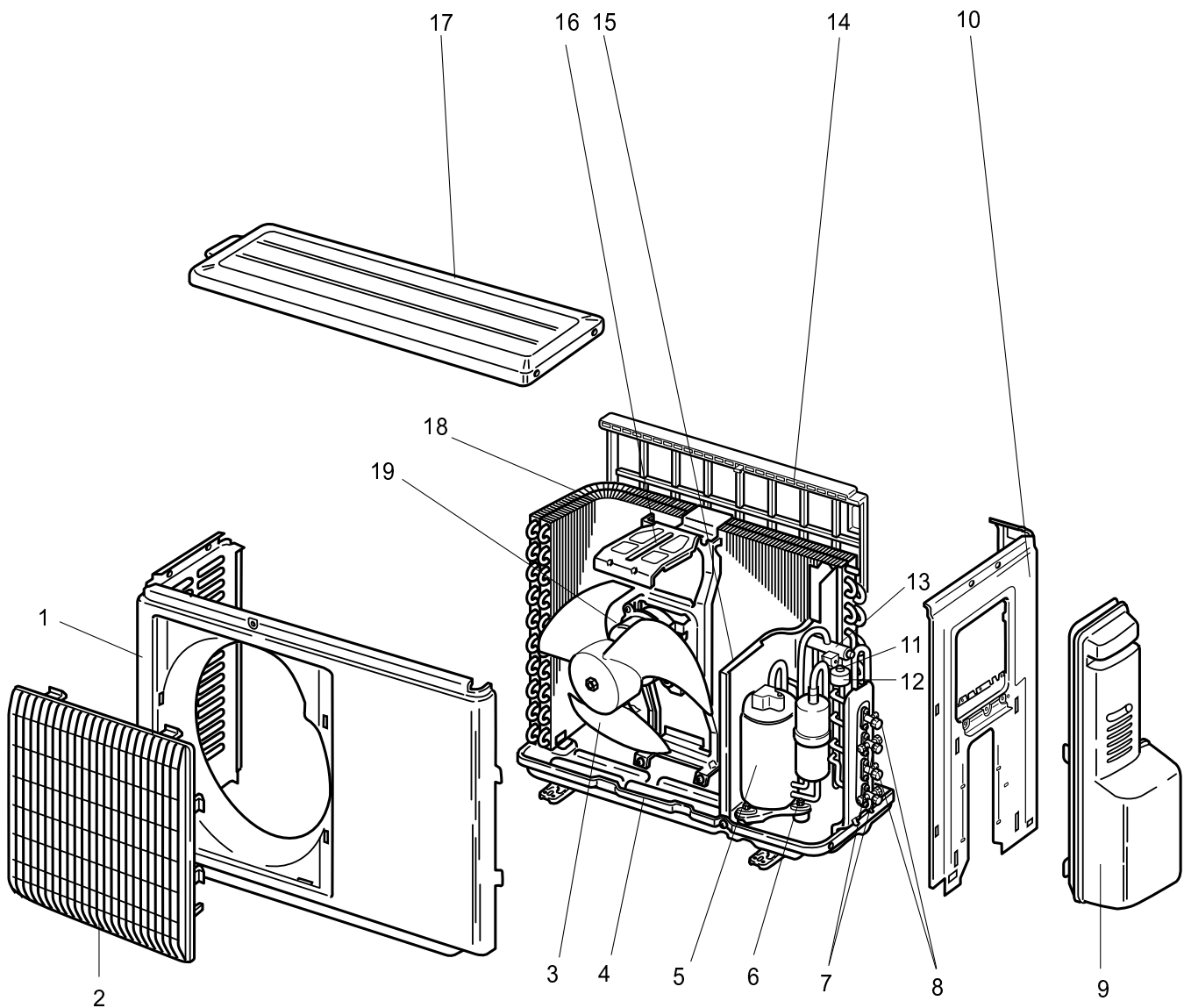


15-□. ACCESSOR□



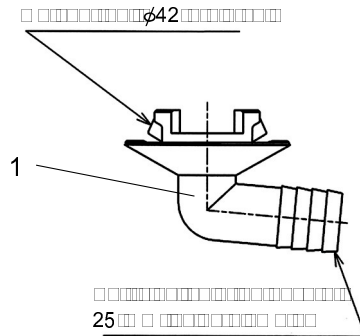
MXZ-2A0VA - E1 E2 MXZ-2A40VA - E1 E2 MXZ-2A52VA - E1 E2

1-1. OUTDOOR UNIT STRUCTURAL PARTS AND FUNCTIONAL PARTS



RoHS PARTS LIST (RoHS compliant)

MXZ-2A□0VA - E1 E2 MXZ-2A40VA - E1 E2 MXZ-2A52VA - E1 E2
 1□-□, DRAIN SOC□ET



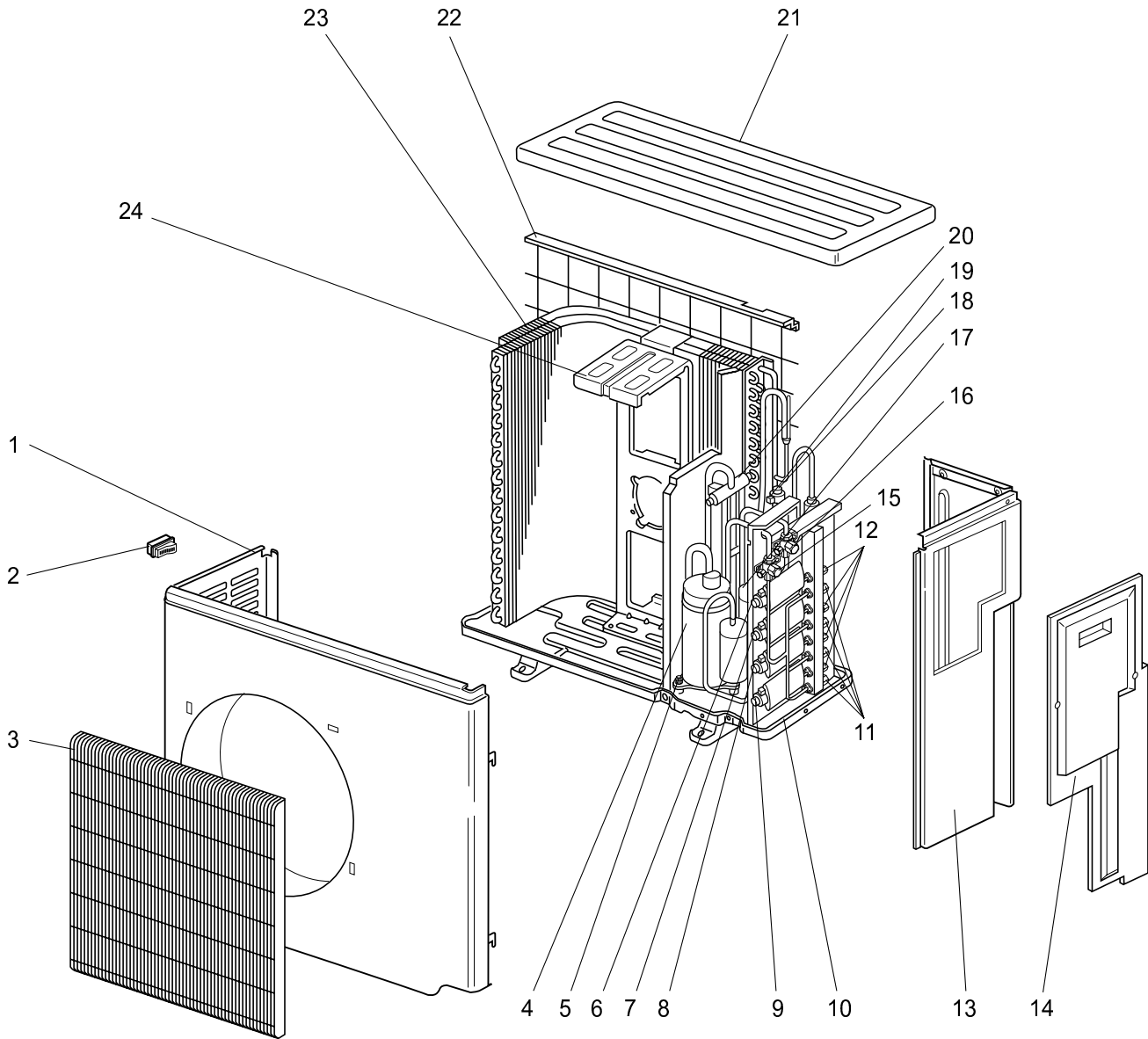
No.	RoHS	Part No.	Part Name	Symbol in □ in □ Dia □ am	Unit						Remarks
					MXZ-2A□0VA-		MXZ-2A40VA-		MXZ-2A52VA-		
					<input type="checkbox"/> E1	<input type="checkbox"/> E2	<input type="checkbox"/> E1	<input type="checkbox"/> E2	<input type="checkbox"/> E1	<input type="checkbox"/> E2	
1	<input type="checkbox"/>	E12 □□□ □04	DRAIN SOC□ET		<input type="checkbox"/> 1	<input type="checkbox"/> 1	<input type="checkbox"/> 1	<input type="checkbox"/> 1	<input type="checkbox"/> 1	<input type="checkbox"/> 1	

RoHS PARTS LIST (RoHS compliant)

MXZ-□A54VA - E1 □ E2 □ E□ □ E4

MXZ-4A□1VA - E1 □ E2 □ E□ □ E4

1□-4. OUTDOOR UNIT STRUCTURAL PARTS AND FUNCTIONAL PARTS

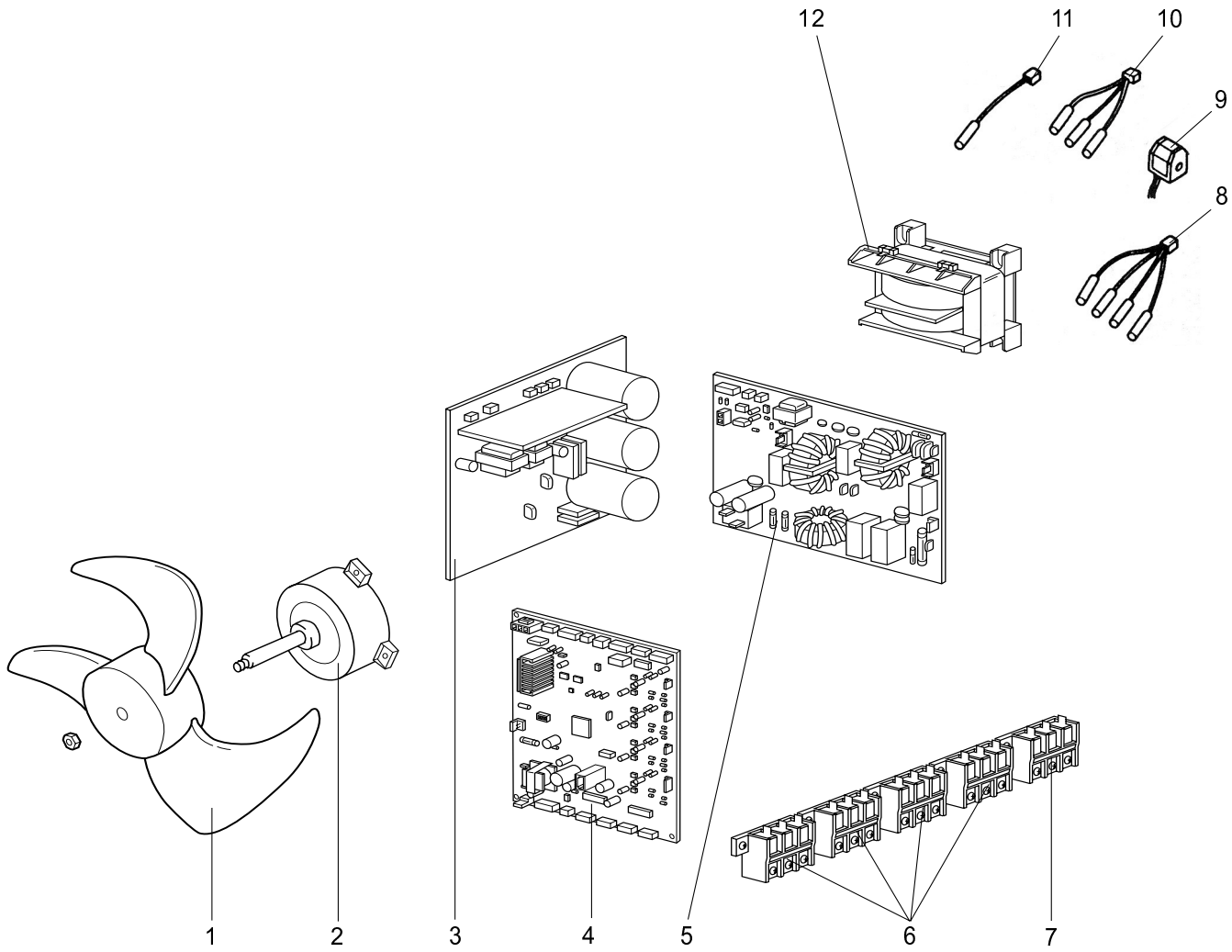


RoHS PARTS LIST (RoHS compliant)

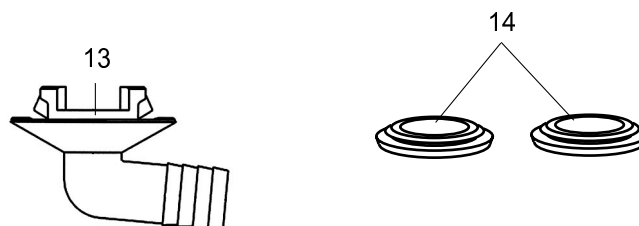
MXZ-□A54VA - E1 □ E2 □ E□ □ E4

MXZ-4A□1VA - E1 □ E2 □ E□ □ E4

1□-5. OUTDOOR UNIT FUNCTIONAL PARTS AND ELECTRICAL PARTS



1□-□. ACCESSOR□



RoHS PARTS LIST (RoHS compliant)

MXZ-A54VA - E1 E2 E3 E4

MXZ-4A1VA - E1 E2 E3 E4

1-5. OUTDOOR UNIT FUNCTIONAL PARTS AND ELECTRICAL PARTS

XX

No.	RoHS	Part No.	Part Name	Symbol in i in Dia mm	Unit								Remarks	
					MXZ-A54VA-				MXZ-4A1VA-					
					E1	E2	E3	E4	E1	E2	E3	E4		
1		E12 51 501	PROPELLER		1	1	1	1	1	1	1	1	1	
2		E12 00 001	OUTDOOR FAN MOTOR	MF	1	1	1	1	1	1	1	1	1	RC000-0
		E12 00 440	POPER BOARD		1	1	1		1	1	1			Incl in at in an RT4
		E12 C0 440	POPER BOARD					1				1		Incl in at in an RT4
4		E12 00 450	ELECTRONIC CONTROL P.C. BOARD		1	1								
		E12 00 450	ELECTRONIC CONTROL P.C. BOARD						1	1				
		E12 C0 450	ELECTRONIC CONTROL P.C. BOARD				1							
		E12 C0 450	ELECTRONIC CONTROL P.C. BOARD								1			
		E12 C1 450	ELECTRONIC CONTROL P.C. BOARD					1						
		E12 C1 450	ELECTRONIC CONTROL P.C. BOARD										1	
5		E12 00 444	NOISE FILTER P.C. BOARD		1	1	1	1	1	1	1	1	1	
		E12 2 4	TERMINAL LOC	T25					4	4	4	4		Incl in connection
		E12 2 5	TERMINAL LOC	T1	1	1	1	1	1	1	1	1		Power plug
		E12 00 0	GAS PIPE TEMPERATURE THERMISTOR SET	RTA C	1	1	1			1	1	1		
		E12 00 0	GAS PIPE TEMPERATURE THERMISTOR SET	RTA C D					1	1	1			
		E12 00 40	R.V. COIL	21S4	1	1	1		1	1	1			
		E12 C1 40	R.V. COIL	21S4				1					1	
10		E12 00 0	THERMISTOR SET	RT12	1	1	1	1	1	1	1	1	1	DEFROST DISCHARGE OUTDOOR HEAT EXCHANGER
11		E12 00 0	AMBIENT TEMPERATURE THERMISTOR	RT5	1	1	1	1	1	1	1	1	1	
12		E12 00 0	REACTOR	L	1	1	1	1	1	1	1	1	1	20A 00μH

1- ACCESSOR

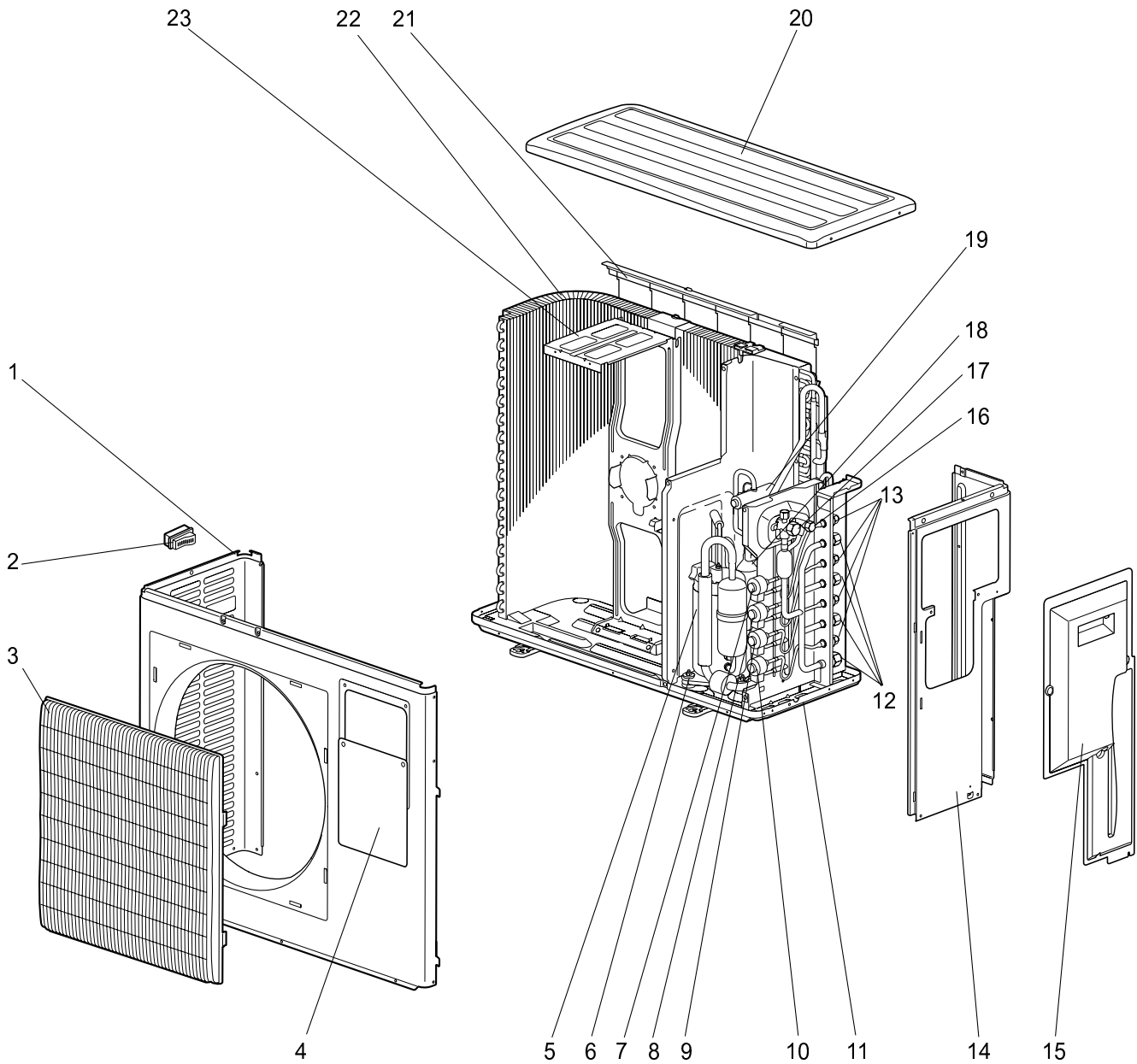
No.	RoHS	Part No.	Part Name	Symbol in i in Dia mm	Unit								Remarks	
					MXZ-A54VA-				MXZ-4A1VA-					
					E1	E2	E3	E4	E1	E2	E3	E4		
1		E12 1 04	DRAIN SOCKET		1	1	1	1	1	1	1	1	1	
14		E12 444 05	DRAIN CAP		2	2	2	2	2	2	2	2	2	

RoHS PARTS LIST (RoHS compliant)

MXZ-□A54VA - E5 □ E □ E □

MXZ-4A□1VA - E5 □ E □ E □

1□-□. OUTDOOR UNIT STRUCTURAL PARTS AND FUNCTIONAL PARTS

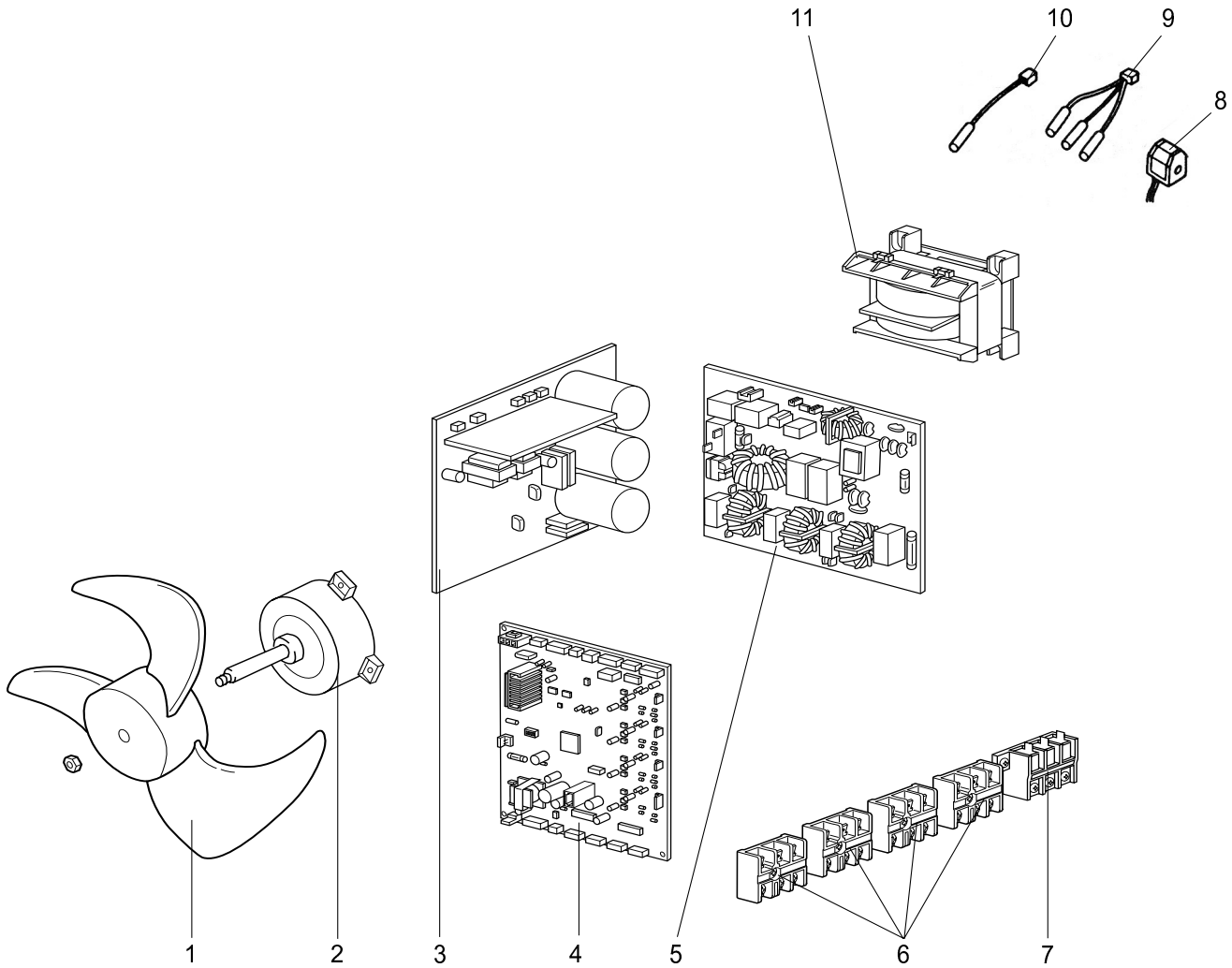


RoHS PARTS LIST (RoHS compliant)

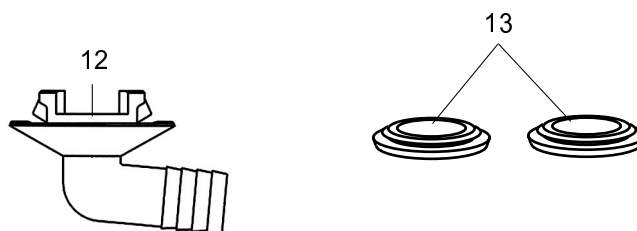
MXZ-□A54VA - E5 □ E □ E □

MXZ-4A□1VA - E5 □ E □ E □

1 □ □ . OUTDOOR UNIT FUNCTIONAL PARTS AND ELECTRICAL PARTS



1 □ □ . ACCESSOR □



RoHS PARTS LIST (RoHS compliant)

MXZ-A54VA - E5 E E

MXZ-4A1VA - E5 E E

1-1. OUTDOOR UNIT FUNCTIONAL PARTS AND ELECTRICAL PARTS

XX

No.	RoHS	Part No.	Part Name	Symbol in mm Dia mm	Unit						Remarks
					MXZ-A54VA-			MXZ-4A1VA-			
					E5	E	E	E5	E	E	
1		E12 51 501	PROPELLER		1	1	1	1	1	1	
2		E12 00 001	OUTDOOR FAN MOTOR	MF	1	1	1	1	1	1	RC000-
		E12 C0 440	POWER BOARD		1	1	1	1	1	1	Included at indoor RT4
4		E12 D 450	ELECTRONIC CONTROL P.C. BOARD		1						
		E12 D 450	ELECTRONIC CONTROL P.C. BOARD			1					
		E12 F10 450	ELECTRONIC CONTROL P.C. BOARD				1				
		E12 D 450	ELECTRONIC CONTROL P.C. BOARD					1			
		E12 D 450	ELECTRONIC CONTROL P.C. BOARD						1		
5		E12 D 444	NOISE FILTER P.C. BOARD		1	1	1	1	1	1	
		E12 C2 005	TERMINAL LOC	T25				4	4	4	Indoor unit connection
		E12 D 004	TERMINAL LOC	T1	1	1	1	1	1	1	Power plug
		E12 C1 40	R.V. COIL	21S4	1	1	1	1	1	1	
		E12 00 00	THERMISTOR SET	RT12	1	1	1	1	1	1	DEFROST DISCHARGE OUTDOOR HEAT EXCHANGER
10		E12 00 00	AMBIENT TEMPERATURE THERMISTOR	RT5	1	1	1	1	1	1	
11		E12 00 00	REACTOR	L	1	1	1	1	1	1	20A 00μH

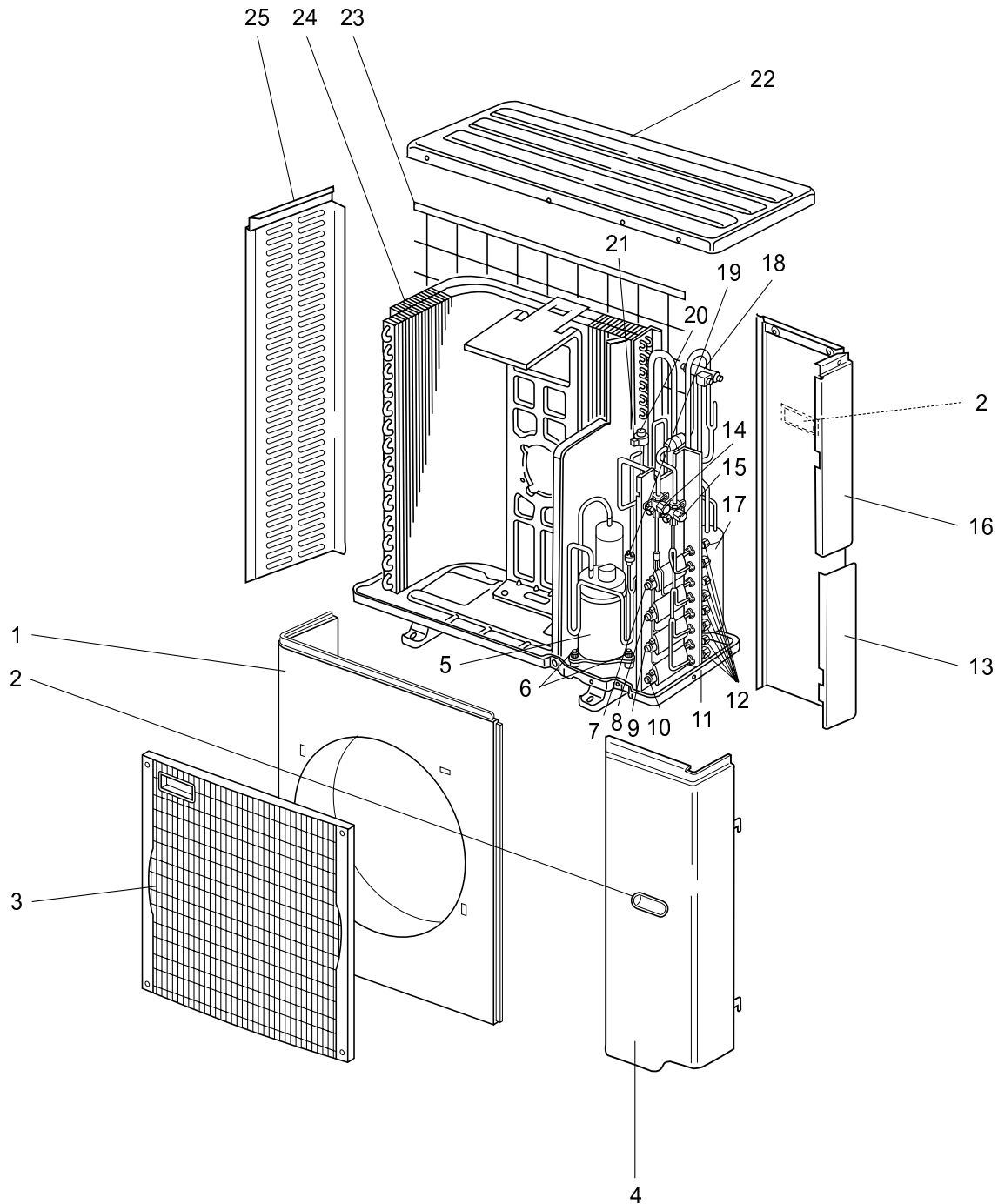
1-2. ACCESSORY

No.	RoHS	Part No.	Part Name	Symbol in mm Dia mm	Unit						Remarks
					MXZ-A54VA-			MXZ-4A1VA-			
					E5	E	E	E5	E	E	
12		E12 1 04	DRAIN SOCKET		1	1	1	1	1	1	
1		E12 444 05	DRAIN CAP		2	2	2	2	2	2	

RoHS PARTS LIST (RoHS compliant)

MXZ-4A□0VA - E1

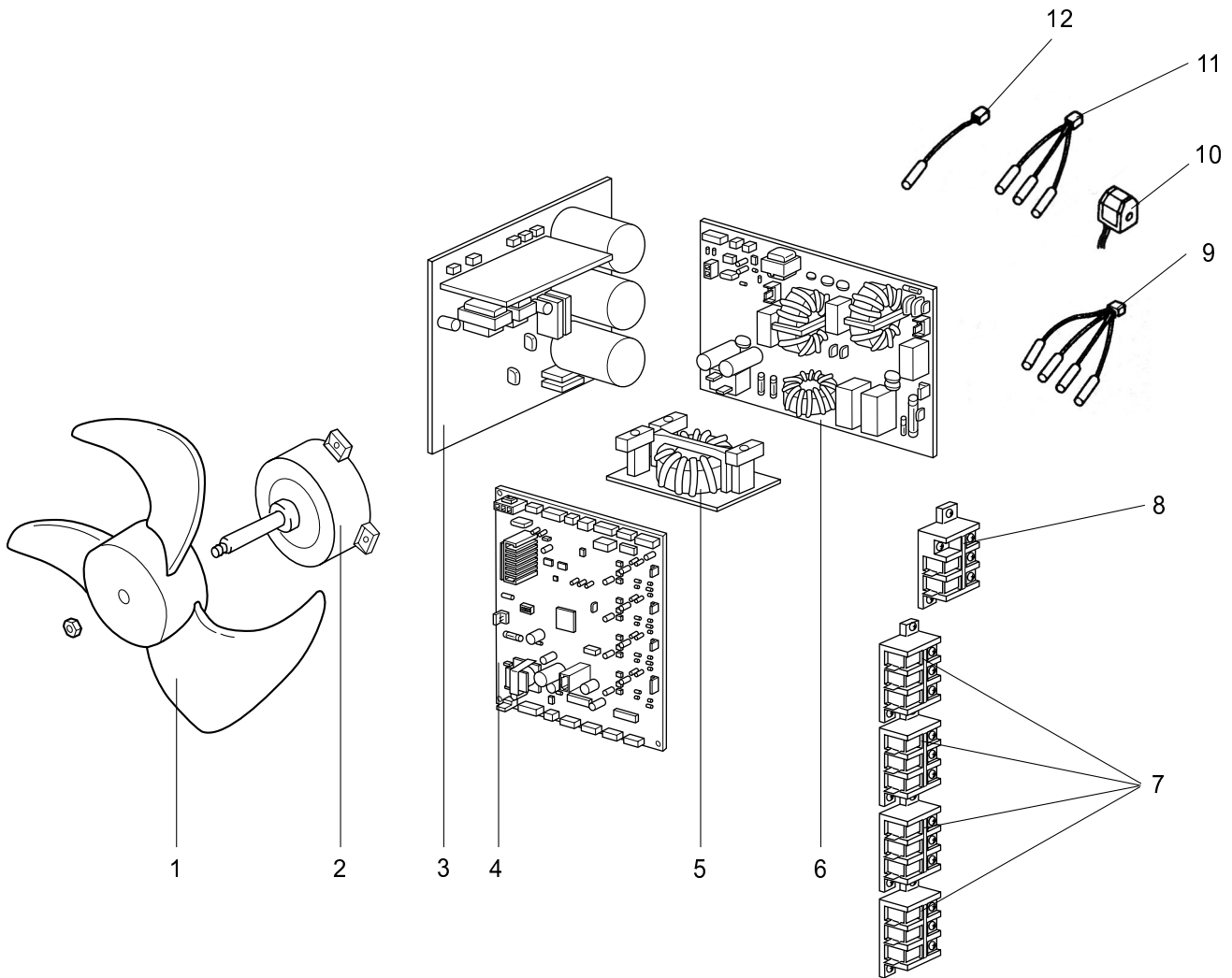
1□-10. OUTDOOR UNIT STRUCTURAL PARTS AND FUNCTIONAL PARTS



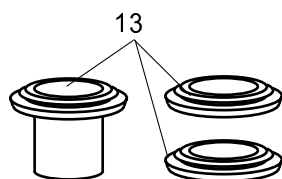
RoHS PARTS LIST (RoHS compliant)

MXZ-4A□0VA - E1

1□-11. OUTDOOR UNIT FUNCTIONAL PARTS AND ELECTRICAL PARTS



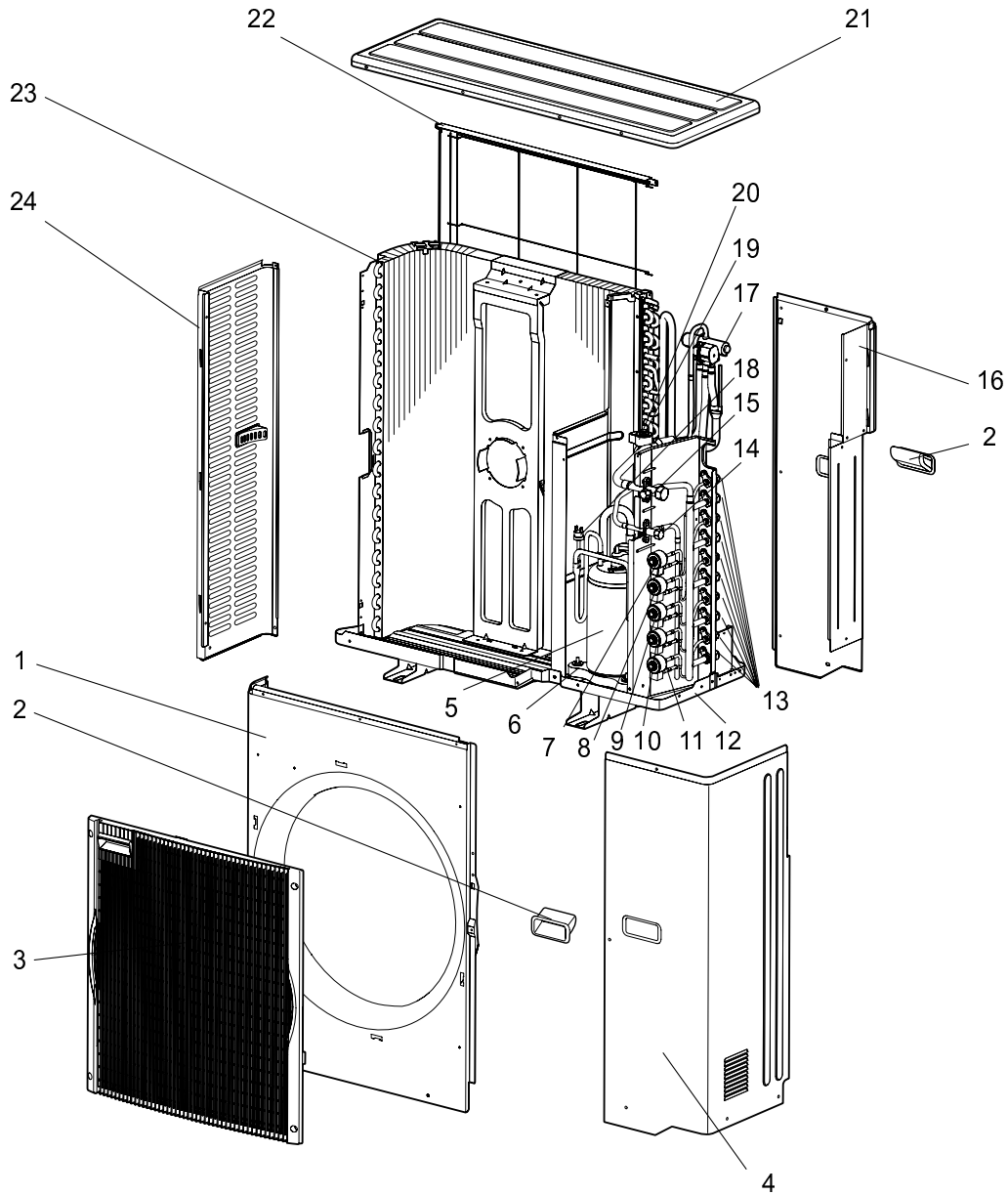
1□-12. ACCESSOR



RoHS PARTS LIST (RoHS compliant)

MXZ-4A□0VA - E2 MXZ-5A100VA - E1

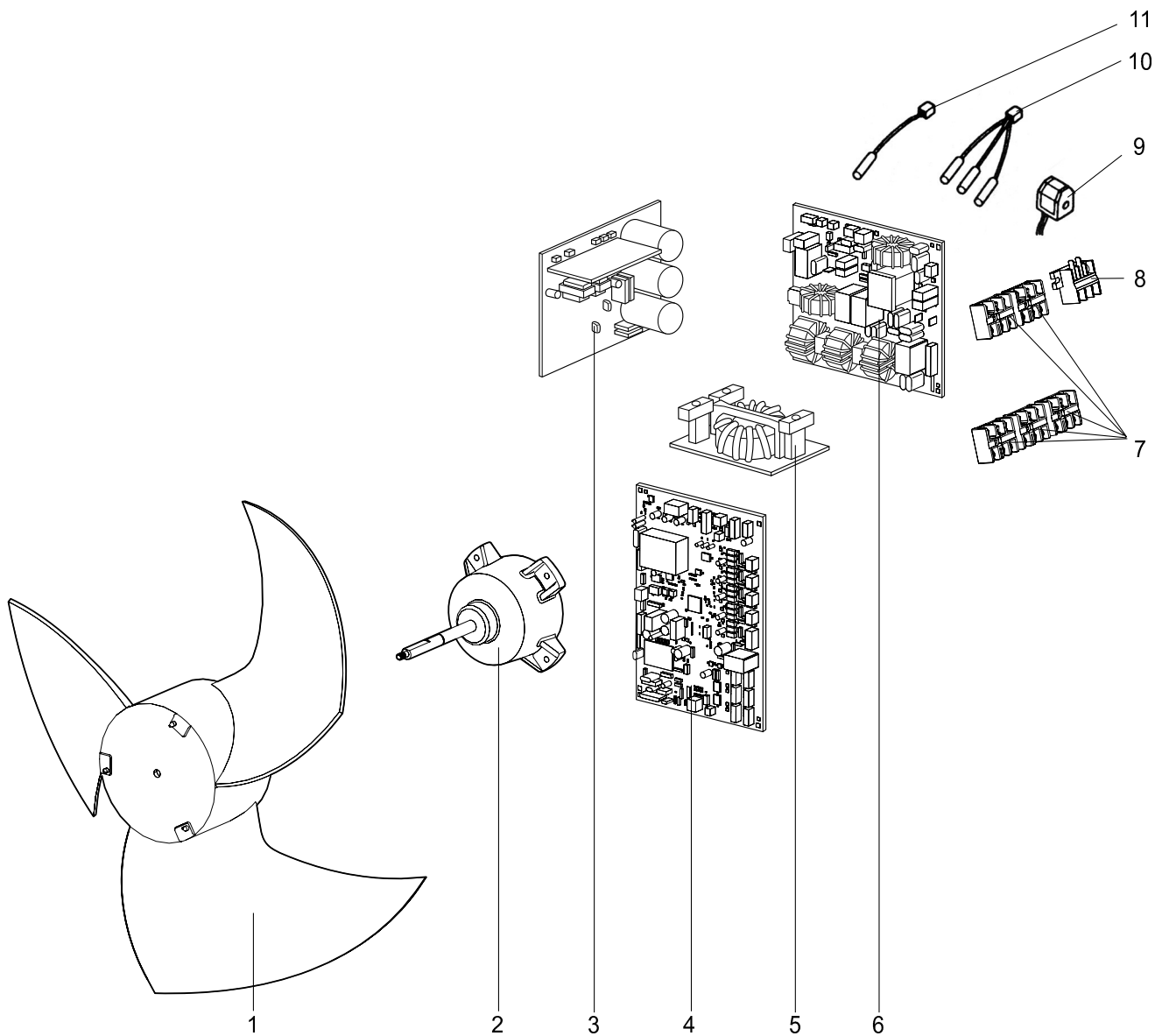
1□-1□. OUTDOOR UNIT STRUCTURAL PARTS AND FUNCTIONAL PARTS



RoHS PARTS LIST (RoHS compliant)

MXZ-4A□0VA - E2 MXZ-5A100VA - E1

1□-14. OUTDOOR UNIT FUNCTIONAL PARTS AND ELECTRICAL PARTS



1□-15. ACCESSOR

