

**Revision G:**

- The fan guard for MUZ-GA50VA-**E**, MUZ-GA60VA-**E** and MUZ-GA71VA-**E** has been changed.

Please void OB389 REVISED EDITION-F.

## OUTDOOR UNIT

# SERVICE MANUAL

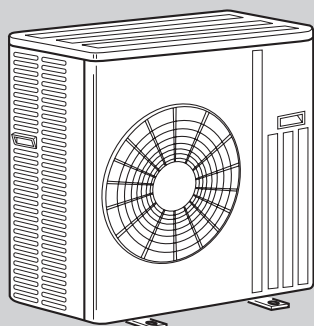


**No. OB389  
REVISED EDITION-G**

### Models

<b>MUZ-GA50VA</b>	- <b>E1</b>
<b>MUZ-GA60VA</b>	- <b>E1</b>
<b>MUZ-GA60VA</b>	- <b>E2</b>
<b>MUZ-GA60VA</b>	- <b>E3</b>
<b>MUZ-GA71VA</b>	- <b>E1</b>
<b>MUZ-GA71VA</b>	- <b>E2</b>

**Indoor unit service manual  
MSZ-GA·VA Series (OB388)**



### CONTENTS

1. TECHNICAL CHANGES .....	3
2. PART NAMES AND FUNCTIONS .....	6
3. SPECIFICATION .....	6
4. NOISE CRITERIA CURVES .....	7
5. OUTLINES AND DIMENSIONS .....	8
6. WIRING DIAGRAM .....	9
7. REFRIGERANT SYSTEM DIAGRAM .....	12
8. PERFORMANCE CURVES .....	15
9. ACTUATOR CONTROL .....	26
10. SERVICE FUNCTIONS .....	27
11. TROUBLESHOOTING .....	27
12. DISASSEMBLY INSTRUCTIONS .....	46
13. PARTS LIST .....	50
14. RoHS PARTS LIST .....	52

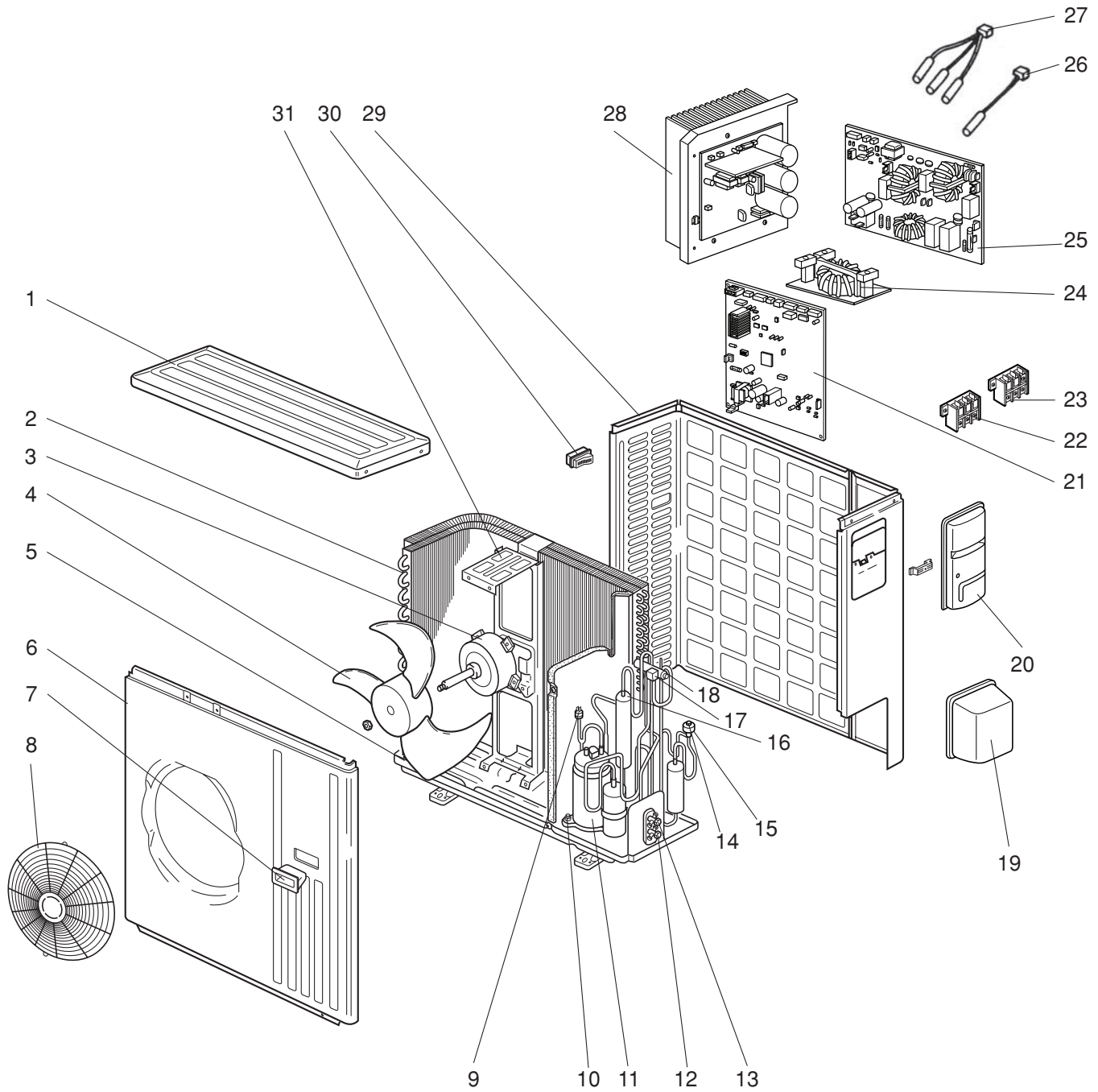
**NOTE:**

- RoHS compliant products have <G> mark on the spec name plate.  
For servicing of RoHS compliant products, refer to the RoHS Parts List.
- Contents of SERVICE FUNCTIONS(10) have been removed.

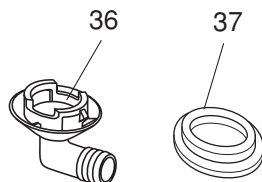


MUZ-GA50VA MUZ-GA60VA MUZ-GA71VA

**13-1. OUTDOOR UNIT STRUCTURAL PARTS, ELECTRICAL PARTS AND FUNCTIONAL PARTS**



**13-2. ACCESSORY**



# PARTS LIST (non-RoHS compliant)

MUZ-GA50VA MUZ-GA60VA MUZ-GA71VA

## 13-1. OUTDOOR UNIT STRUCTURAL PARTS, ELECTRICAL PARTS AND FUNCTIONAL PARTS

Part numbers that are circled are not shown in the illustration.

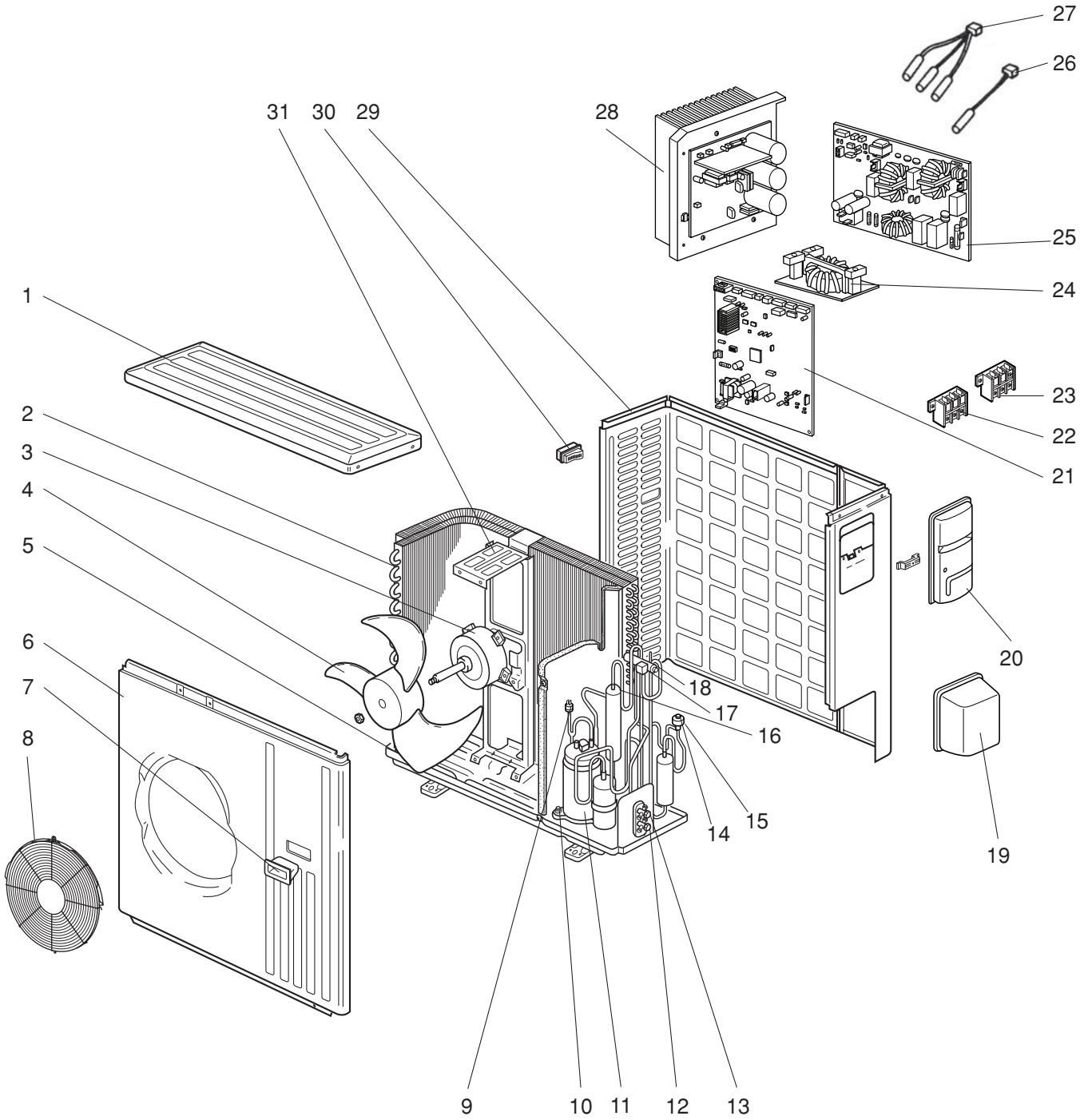
No.	Part No.	Part Name	Symbol in Wiring Diagram	Q'ty/unit			Remarks
				MUZ-GA50 VA - E1	MUZ-GA60 VA - E1	MUZ-GA71 VA - E1	
1	E02 819 297	TOP PANEL		1	1	1	
2	E02 851 630	OUTDOOR HEAT EXCHANGER		1	1		
	E02 853 630	OUTDOOR HEAT EXCHANGER				1	
3	E02 938 301	OUTDOOR FAN MOTOR	MF	1	1	1	RC0J60- □□
4	E02 851 501	PROPELLER		1	1	1	
5	E02 851 290	BASE		1	1		
	E02 853 290	BASE				1	
6	E02 819 232	CABINET		1	1	1	
7	E02 819 009	HANDLE		1	1	1	
8	E02 819 521	FAN GUARD		1	1	1	
9	E02 853 646	HIGH PRESSURE SWITCH	HPS			1	
10	E12 C34 506	COMPRESSOR RUBBER SET		3	3		3RUBBERS/SET
	E02 853 506	COMPRESSOR RUBBER SET				3	3RUBBERS/SET
11	E02 939 900	COMPRESSOR	MC	1	1		SNB130FLDH1
	E02 853 900	COMPRESSOR	MC			1	TNB220FMCH
12	E02 851 661	STOP VALVE (GAS)		1			φ12.7
	E02 819 661	STOP VALVE (GAS)			1	1	φ15.88
13	E02 821 662	STOP VALVE (LIQUID)		1	1		φ6.35
	E02 822 662	STOP VALVE (LIQUID)				1	φ9.52
14	E02 851 640	EXPANSION VALVE		1	1		
	E02 853 640	EXPANSION VALVE				1	
15	E02 851 493	EXPANSION VALVE COIL	LEV	1	1	1	
16	E02 853 299	OIL SEPARATOR				1	
17	E02 935 490	R.V. COIL	21S4	1	1	1	
18	E02 891 961	4-WAY VALVE		1	1	1	
19	E02 819 650	VALVE COVER		1	1	1	
20	E02 819 245	SERVICE PANEL		1	1	1	
21	E12 D01 450	OUTDOOR ELECTRONIC CONTROL P.C. BOARD		1			
	E12 C96 450	OUTDOOR ELECTRONIC CONTROL P.C. BOARD			1		
	E12 C97 450	OUTDOOR ELECTRONIC CONTROL P.C. BOARD				1	
22	E02 935 374	TERMINAL BLOCK	TB1	1	1	1	3P
23	E02 823 375	TERMINAL BLOCK	TB2	1	1	1	3P
24	E02 851 337	REACTOR	L	1	1	1	
25	E02 935 444	NOISE FILTER P.C. BOARD		1	1	1	
26	E02 935 309	AMBIENT TEMPERATURE THERMISTOR	RT65	1	1	1	
27	E02 851 308	THERMISTOR SET	RT61,RT62,RT68	1	1	1	DEFROST, DISCHARGE OUTDOOR HEAT EXCHANGER
28	E02 935 440	POWER BOARD		1	1	1	Including heat sink and RT64
29	E02 819 233	BACK PANEL (OUT)		1	1	1	
30	E02 817 009	HANDLE		1	1	1	
31	E02 851 515	MOTOR SUPPORT		1	1	1	
32	E02 127 382	FUSE	F801	1	1	1	T3.15AL250V
33	E02 737 382	FUSE	F911	1	1	1	T1AL250V
34	E02 935 385	FUSE & VARISTOR	F64,NR64	1	1	1	T2AL250V
35	E02 851 936	CAPILLARY TUBE (TAPER PIPE)		1	1		φ3.6xφ2.4x50
	E02 853 936	CAPILLARY TUBE (TAPER PIPE)				1	φ3.6xφ2.4x50
	E02 861 936	CAPILLARY TUBE				1	φ1.8xφ0.6x1000

## 13-2. ACCESSORY

No.	Part No.	Part Name	Symbol in Wiring Diagram	Q'ty/unit			Remarks
				MUZ-GA50 VA - E1	MUZ-GA60 VA - E1	MUZ-GA71 VA - E1	
36	E02 817 704	DRAIN SOCKET		1	1	1	
37	E02 444 705	DRAIN CAP		2	2	2	φ33

# 14 RoHS PARTS LIST (RoHS compliant)

## MUZ-GA50VA MUZ-GA60VA MUZ-GA71VA 14-1. OUTDOOR UNIT STRUCTURAL PARTS, ELECTRICAL PARTS AND FUNCTIONAL PARTS



# RoHS PARTS LIST (RoHS compliant)

MUZ-GA50VA MUZ-GA60VA MUZ-GA71VA

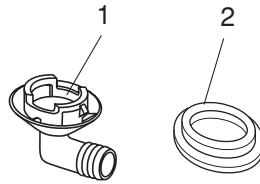
## 14-1. OUTDOOR UNIT STRUCTURAL PARTS, ELECTRICAL PARTS AND FUNCTIONAL PARTS

Part numbers that are circled are not shown in the illustration.

No.	RoHS	Part No.	Part Name	Symbol in Wiring Diagram	Q'ty/unit						Remarks
					MUZ-GA50 VA - E1	MUZ-GA60 VA -			MUZ-GA71 VA -		
						E1	E2	E3	E1	E2	
1	G	E12 819 297	TOP PANEL		1	1	1	1	1	1	
2	G	E12 851 630	OUTDOOR HEAT EXCHANGER		1	1	1				
	G	E12 853 630	OUTDOOR HEAT EXCHANGER				1		1		
3	G	E12 938 301	OUTDOOR FAN MOTOR	MF	1	1	1	1	1	1	RC0J60-□□
4	G	E12 851 501	PROPELLER		1	1	1	1	1	1	
5	G	E12 851 290	BASE		1	1	1	1			
	G	E12 853 290	BASE						1	1	
6	G	E12 819 232	CABINET		1	1	1	1	1	1	
7	G	E12 819 009	HANDLE		1	1	1	1	1	1	
8	G	E12 D84 521	FAN GUARD		1	1	1	1	1	1	Including ice guard
9	G	E12 853 646	HIGH PRESSURE SWITCH	HPS				1	1	1	
10	G	E12 C34 506	COMPRESSOR RUBBER SET		3	3	3	3			3RUBBERS/SET
	G	E12 853 506	COMPRESSOR RUBBER SET						3	3	3RUBBERS/SET
11	G	E12 939 900	COMPRESSOR	MC	1	1					SNB130FLDH1
	G	E12 C06 900	COMPRESSOR	MC			1				SNB130FLEH1
	G	E12 C37 900	COMPRESSOR	MC				1			SNB130FGBH
	G	E12 853 900	COMPRESSOR	MC					1	1	TNB220FMCH
12	G	E12 851 661	STOP VALVE (GAS)		1						φ12.7
	G	E12 819 661	STOP VALVE (GAS)			1	1	1	1	1	φ15.88
13	G	E12 821 662	STOP VALVE (LIQUID)		1	1	1	1			φ6.35
	G	E12 822 662	STOP VALVE (LIQUID)						1	1	φ9.52
14	G	E12 851 640	EXPANSION VALVE		1	1	1	1			
	G	E12 853 640	EXPANSION VALVE						1	1	
15	G	E12 851 493	EXPANSION VALVE COIL	LEV	1	1	1	1	1	1	
16	G	E12 853 299	OIL SEPARATOR				1		1	1	
17	G	E12 935 490	R.V. COIL	21S4	1	1	1		1	1	
	G	E12 D02 490	R.V. COIL	21S4				1			
18	G	E12 891 961	4-WAY VALVE		1	1	1		1	1	
	G	E12 C18 961	4-WAY VALVE					1			
19	G	E12 819 650	VALVE COVER		1	1	1	1	1	1	
20	G	E12 819 245	SERVICE PANEL		1	1	1	1	1	1	
21	G	E12 D01 450	OUTDOOR ELECTRONIC CONTROL P.C. BOARD		1						
	G	E12 C96 450	OUTDOOR ELECTRONIC CONTROL P.C. BOARD			1	1				
	G	E12 C97 450	OUTDOOR ELECTRONIC CONTROL P.C. BOARD						1	1	
	G	E12 D02 450	OUTDOOR ELECTRONIC CONTROL P.C. BOARD					1			
22	G	E12 935 374	TERMINAL BLOCK	TB1	1	1	1	1	1	1	3P
23	G	E12 823 375	TERMINAL BLOCK	TB2	1	1	1	1	1	1	3P
24	G	E12 851 337	REACTOR	L	1	1	1	1	1	1	
25	G	E12 935 444	NOISE FILTER P.C. BOARD		1	1	1	1	1	1	
26	G	E12 935 309	AMBIENT TEMPERATURE THERMISTOR	RT65	1	1	1	1	1	1	
27	G	E12 851 308	THERMISTOR SET	RT61,RT62,RT68	1	1	1	1	1	1	DEFROST, DISCHARGE OUTDOOR HEAT EXCHANGER
28	G	E12 935 440	POWER BOARD		1	1	1		1	1	Including heat sink and RT64
	G	E12 B79 440	POWER BOARD					1			Including heat sink and RT64
29	G	E12 819 233	BACK PANEL(OUT)		1	1	1	1	1	1	
30	G	E12 817 009	HANDLE		1	1	1	1	1	1	
31	G	E12 851 515	MOTOR SUPPORT		1	1	1	1	1	1	
32	G	E12 127 382	FUSE	F801	1	1	1	1	1	1	T3.15AL250V
33	G	E12 737 382	FUSE	F911	1	1	1	1	1	1	T1AL250V
34	G	E12 935 385	FUSE & VARISTOR	F64,NR64	1	1	1	1	1	1	T2AL250V
35	G	E12 851 936	CAPILLARY TUBE(TAPER PIPE)		1	1	1	1			φ3.6xφ2.4x50
	G	E12 853 936	CAPILLARY TUBE(TAPER PIPE)						1	1	φ3.6xφ2.4x50
	G	E12 861 936	CAPILLARY TUBE						1	1	φ1.8xφ0.6x1000

# RoHS PARTS LIST (RoHS compliant)

MUZ-GA50VA  
 MUZ-GA60VA  
 MUZ-GA71VA  
 14-2. ACCESSORY



No.	RoHS	Part No.	Part Name	Symbol in Wiring Diagram	Q'ty/unit						Remarks		
					MUZ-GA50 VA - E1			MUZ-GA60 VA -				MUZ-GA71 VA -	
					E1	E2	E3	E1	E2	E1		E2	
1	G	E12 817 704	DRAIN SOCKET		1	1	1	1	1	1			
2	G	E12 444 705	DRAIN CAP		2	2	2	2	2	2	φ33		





HEAD OFFICE: TOKYO BLDG., 2-7-3, MARUNOUCHI, CHIYODA-KU, TOKYO 100-8310, JAPAN

© Copyright 2005 MITSUBISHI ELECTRIC ENGINEERING CO., LTD

Distributed in Jun. 2010. No. OB389 REVISED EDITION-G 5

Distributed in Sep. 2007. No. OB389 REVISED EDITION-F 6

Distributed in Jul. 2007. No. OB389 REVISED EDITION-E 6

Distributed in Jun. 2007. No. OB389 REVISED EDITION-D 6

Distributed in Apr. 2007. No. OB389 REVISED EDITION-C 6

Distributed in Aug. 2006. No. OB389 REVISED EDITION-B 6

Distributed in Jun. 2006. No. OB389 REVISED EDITION-A 6

Distributed in Jan. 2005. No. OB389 6

Made in Japan

New publication, effective Jun. 2010  
Specifications subject to change without notice.