

**Revision F:**

- The fan guard for MUZ-GB50VA- [E1], [E2], [E3] has been changed.

Please void OB455 REVISED EDITION-E.

# OUTDOOR UNIT SERVICE MANUAL



**No. OB455  
REVISED EDITION-F**

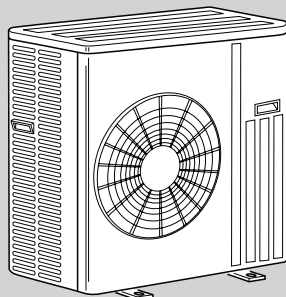
## Models

**MUZ-GB50VA - [E1]**

**MUZ-GB50VA - [E2]**

**MUZ-GB50VA - [E3]**

**Indoor unit service manual  
MSZ-GB·VA Series (OB454)**



## CONTENTS

1. TECHNICAL CHANGES .....	3
2. PART NAMES AND FUNCTIONS .....	4
3. SPECIFICATION .....	4
4. NOISE CRITERIA CURVES .....	6
5. OUTLINES AND DIMENSIONS .....	6
6. WIRING DIAGRAM .....	7
7. REFRIGERANT SYSTEM DIAGRAM .....	9
8. PERFORMANCE CURVES .....	11
9. ACTUATOR CONTROL .....	16
10. SERVICE FUNCTIONS .....	17
11. TROUBLESHOOTING .....	18
12. DISASSEMBLY INSTRUCTIONS .....	42
13. RoHS PARTS LIST .....	46

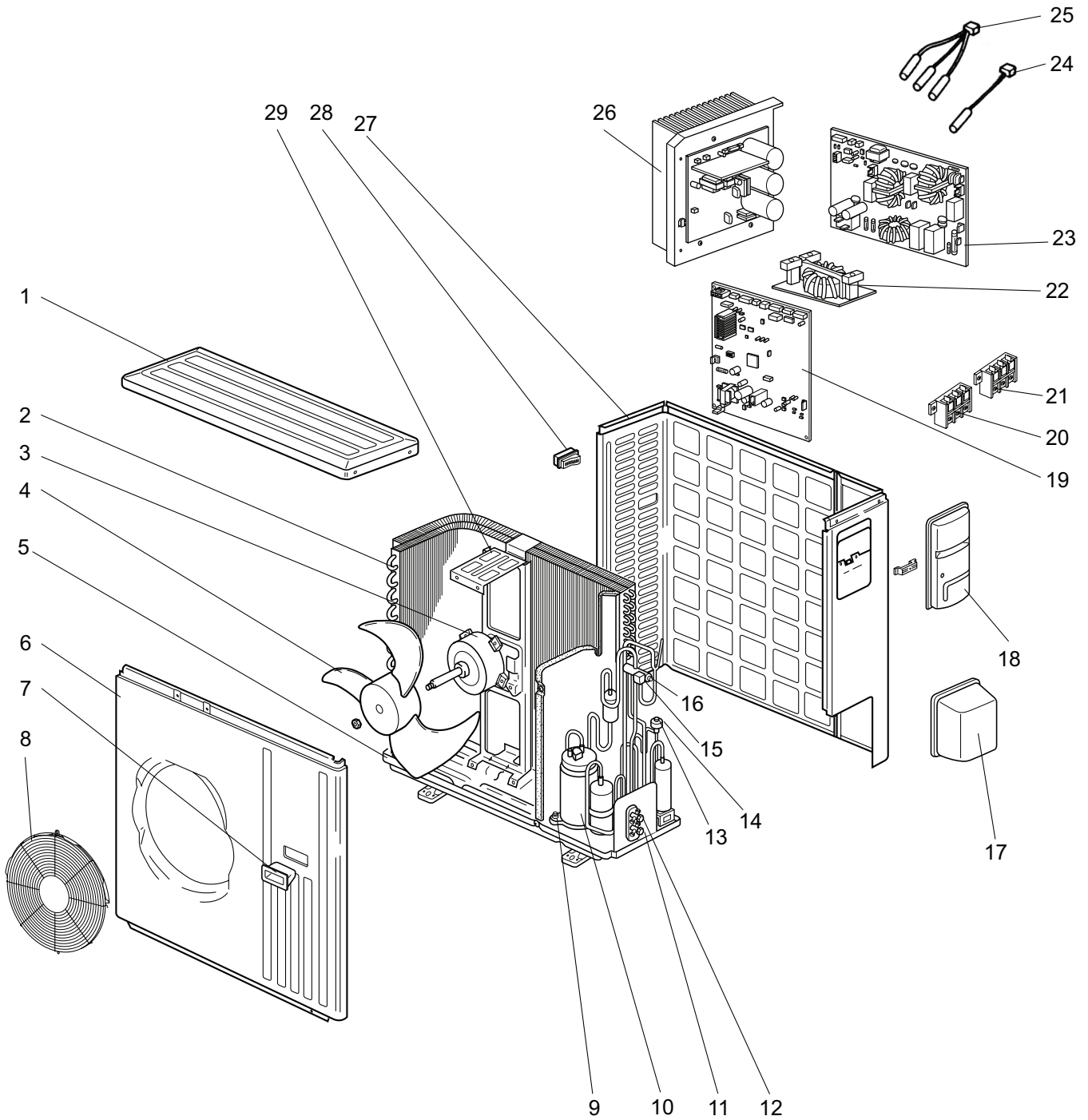
**NOTE:**

- This service manual describes technical data of the outdoor units.



MUZ-GB50VA- [E1] MUZ-GB50VA- [E2]

13-1. OUTDOOR UNIT STRUCTURAL PARTS, ELECTRICAL PARTS AND FUNCTIONAL PARTS



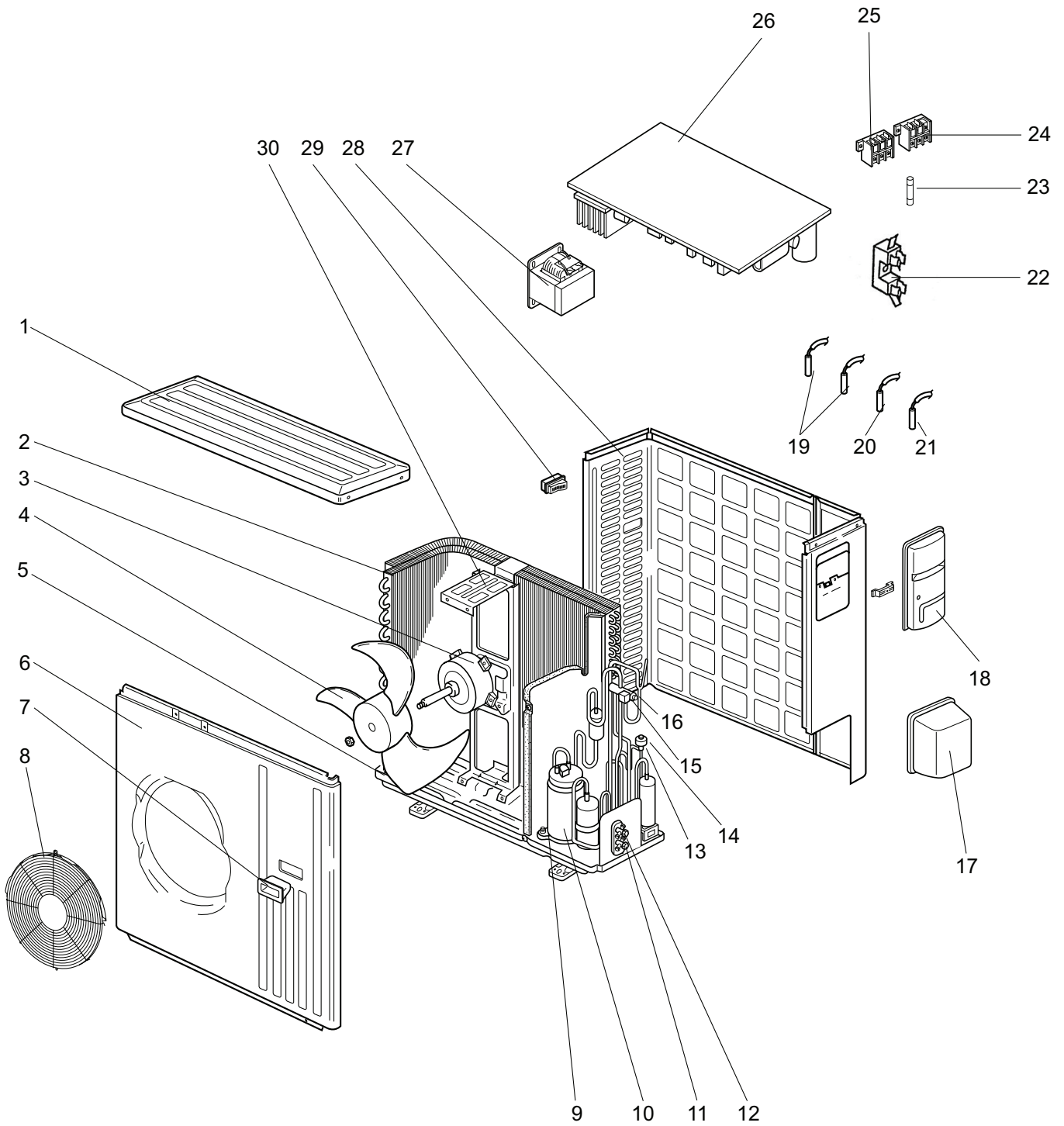
### 13-1. OUTDOOR UNIT STRUCTURAL PARTS, ELECTRICAL PARTS AND FUNCTIONAL PARTS

Part number that is circled is not shown in the illustration.

No.	RoHS	Part No.	Part Name	Symbol in Wiring Diagram	Q'ty/unit		Remarks
					MUZ-GB50VA-		
					E1	E2	
1	G	E12 819 297	TOP PANEL		1	1	
2	G	E12 851 630	OUTDOOR HEAT EXCHANGER		1	1	
3	G	E12 938 301	OUTDOOR FAN MOTOR	MF	1	1	RC0J60-□□
4	G	E12 851 501	PROPELLER		1	1	
5	G	E12 851 290	BASE		1	1	
6	G	E12 819 232	CABINET		1	1	
7	G	E12 819 009	HANDLE		1	1	
8	G	E12 D84 521	FAN GUARD		1	1	Including ice guard
9	G	E12 C34 506	COMPRESSOR RUBBER SET		3	3	3 RUBBERS/SET
10	G	E12 939 900	COMPRESSOR	MC	1		SNB130FLDH1
	G	E12 C06 900				1	SNB130FLEH1
11	G	E12 851 661	STOP VALVE (GAS)		1	1	ø12.7
12	G	E12 821 662	STOP VALVE (LIQUID)		1	1	ø6.35
13	G	E12 851 640	EXPANSION VALVE		1	1	
14	G	E12 851 493	EXPANSION VALVE COIL	LEV	1	1	
15	G	E12 935 490	R.V. COIL	21S4	1	1	
16	G	E12 891 961	4-WAY VALVE		1	1	
17	G	E12 819 650	VALVE COVER		1	1	
18	G	E12 819 245	SERVICE PANEL		1	1	
19	G	E12 C95 450	OUTDOOR ELECTRONIC CONTROL P.C. BOARD		1	1	
20	G	E12 935 374	TERMINAL BLOCK	TB1	1	1	3 P
21	G	E12 823 375	TERMINAL BLOCK	TB2	1	1	3 P
22	G	E12 A87 337	REACTOR	L	1	1	
23	G	E12 935 444	NOISE FILTER P.C. BOARD		1	1	
24	G	E12 935 309	AMBIENT TEMPERATURE THERMISTOR	RT65	1	1	
25	G	E12 851 308	THERMISTOR SET	RT61,RT62,RT68	1	1	DEFROST, DISCHARGE, OUTDOOR HEAT EXCHANGER
26	G	E12 935 440	POWER BOARD		1	1	Including heat sink and RT64
27	G	E12 819 233	BACK PANEL (OUT)		1	1	
28	G	E12 817 009	HANDLE		1	1	
29	G	E12 851 515	MOTOR SUPPORT		1	1	
30	G	E12 127 382	FUSE	F801	1	1	T3.15AL250V
31	G	E12 737 382	FUSE	F911	1	1	T1AL250V
32	G	E12 935 385	FUSE & VARISTOR	F64, NR64	1	1	T2AL250V
33	G	E12 851 936	CAPILLARY TUBE (TAPER PIPE)		1	1	ø3.6 × ø2.4 × 50
34	G	E12 853 299	OIL SEPARATOR		1	1	
35	G	E12 861 936	CAPILLARY TUBE		1	1	ø1.8 × ø0.6 × 1000

MUZ-GB50VA- E3

13-2. OUTDOOR UNIT STRUCTURAL PARTS, ELECTRICAL PARTS AND FUNCTIONAL PARTS



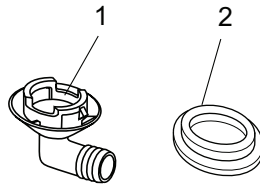
## 13-2. OUTDOOR UNIT STRUCTURAL PARTS, ELECTRICAL PARTS AND FUNCTIONAL PARTS

Part number that is circled is not shown in the illustration.

No.	RoHS	Part No.	Part Name	Symbol in Wiring Diagram	Q'ty/unit		Remarks
					MUZ-GB50VA- <sup>Ⓔ</sup>		
1	G	E12 819 297	TOP PANEL			1	
2	G	E12 851 630	OUTDOOR HEAT EXCHANGER			1	
3	G	E12 938 301	OUTDOOR FAN MOTOR	MF		1	RC0J60-□□
4	G	E12 851 501	PROPELLER			1	
5	G	E12 851 290	BASE			1	
6	G	E12 819 232	CABINET			1	
7	G	E12 819 009	HANDLE			1	
8	G	E12 D84 521	FAN GUARD			1	Including ice guard
9	G	E12 C34 506	COMPRESSOR RUBBER SET			3	3 RUBBERS/SET
10	G	E12 C37 900	COMPRESSOR	MC		1	SNB130FGBH
11	G	E12 D58 661	STOP VALVE (GAS)			1	∅12.7
12	G	E12 D58 662	STOP VALVE (LIQUID)			1	∅6.35
13	G	E12 851 640	EXPANSION VALVE			1	
14	G	E12 D58 493	EXPANSION VALVE COIL	LEV		1	
15	G	E12 D58 490	R.V. COIL	21S4		1	
16	G	E12 C18 961	4-WAY VALVE			1	
17	G	E12 819 650	VALVE COVER			1	
18	G	E12 819 245	SERVICE PANEL			1	
19	G	E12 D58 306	THERMISTOR SET	RT61,RT62		1	DEFROST, DISCHARGE
20	G	E12 D58 309	AMBIENT TEMPERATURE THERMISTOR	RT65		1	
21	G	E12 C34 307	OUTDOOR HEAT EXCHANGER TEMPERATURE THERMISTOR	RT68		1	
22	G	E12 735 241	FUSE HOLDER			1	
23	G	E12 735 382	FUSE	F61		1	T20AL250V
24	G	E12 927 374	TERMINAL BLOCK	TB1		1	3 P
25	G	E12 823 375	TERMINAL BLOCK	TB2		1	3 P
26	G	E12 D58 451	INVERTER P.C. BOARD			1	Including heat sink and RT64
27	G	E12 D58 337	REACTOR	L61		1	
28	G	E12 819 233	BACK PANEL (OUT)			1	
29	G	E12 817 009	HANDLE			1	
30	G	E12 851 515	MOTOR SUPPORT			1	
31	G	E12 851 936	CAPILLARY TUBE (TAPER PIPE)			1	∅3.6 × ∅2.4 × 50
32	G	E12 127 382	FUSE	F701,F801,F901		1	T3.15AL250V
33	G	E12 661 385	VARISTOR	NR61-64		1	



**MUZ-GB50VA**  
**13-3. ACCESSORY**



No.	RoHS	Part No.	Part Name	Symbol in Wiring Diagram	Q'ty/unit			Remarks
					MUZ-GB50VA-			
					E1	E2	E3	
1	G	E12 817 704	DRAIN SOCKET		1	1	1	
2	G	E12 444 705	DRAIN CAP		2	2	2	ø33





HEAD OFFICE: TOKYO BLDG., 2-7-3, MARUNOUCHI, CHIYODA-KU, TOKYO 100-8310, JAPAN

© Copyright 2006 MITSUBISHI ELECTRIC ENGINEERING CO.,LTD

Distributed in Jun. 2010. No. OB455 REVISED EDITION-F 5

Distributed in Apr. 2008. No. OB455 REVISED EDITION-E 6

Distributed in Sep. 2007. No. OB455 REVISED EDITION-D 6

Distributed in Jun. 2007. No. OB455 REVISED EDITION-C 6

Distributed in Apr. 2007. No. OB455 REVISED EDITION-B 6

Distributed in Aug. 2006. No. OB455 REVISED EDITION-A 6

Distributed in Mar. 2006. No. OB455 6

Made in Japan

New publication, effective Jun. 2010  
Specifications subject to change without notice.