

INDOOR UNIT

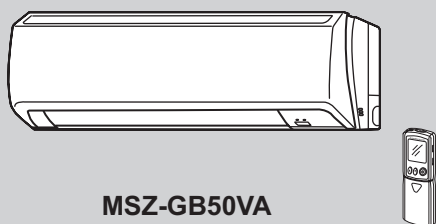
SERVICE MANUAL

No. OB454

Wireless type
Models

MSZ-GB50VA - E1

Outdoor unit service manual
MUZ-GB·VA series (OB455)
MXZ-A·VA series (OB377)
MXZ-8A140VA (OC316)



MSZ-GB50VA

CONTENTS

1. TECHNICAL CHANGES	2
2. PART NAMES AND FUNCTIONS	3
3. SPECIFICATION	5
4. NOISE CRITERIA CURVES	6
5. OUTLINES AND DIMENSIONS	7
6. WIRING DIAGRAM	8
7. REFRIGERANT SYSTEM DIAGRAM	8
8. SERVICE FUNCTIONS	9
9. TROUBLESHOOTING	10
10. DISASSEMBLY INSTRUCTIONS	24
11. RoHS PARTS LIST	27
12. OPTIONAL PARTS	30

NOTE:

- This service manual describes technical data of the indoor units.

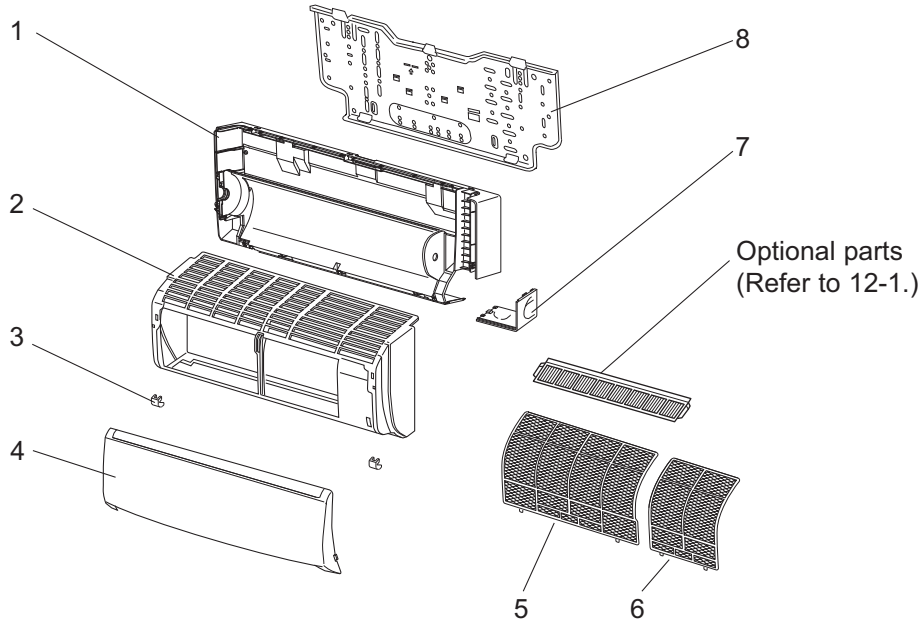


11

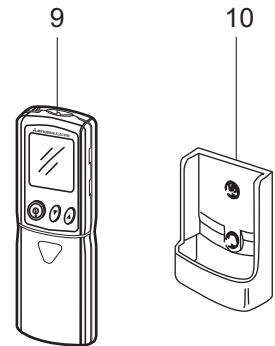
RoHS PARTS LIST (RoHS compliant)

MSZ-GB50VA

11-1. INDOOR UNIT STRUCTURAL PARTS



11-2. ACCESSORY AND REMOTE CONTROLLER



11-1. INDOOR UNIT STRUCTURAL PARTS

No.	RoHS	Part No.	Part name	Symbol in Wiring Diagram	Q'ty/unit	Remarks
					MSZ-GB50VA-	
					<u>E1</u>	
1	G	E12 A32 234	BOX		1	
2	G	E12 915 000	PANEL ASSEMBLY		1	Including No.3,4
3	G	E12 913 067	SCREW CAP		2	2PCS/SET
4	G	E12 915 010	FRONT PANEL		1	
5	G	E12 915 100	CATECHIN AIR FILTER (LEFT)		1	
6	G	E12 916 100	CATECHIN AIR FILTER (RIGHT)		1	
7	G	E12 A32 975	CORNER BOX (RIGHT)		1	
8	G	E12 913 970	INSTALLATION PLATE		1	

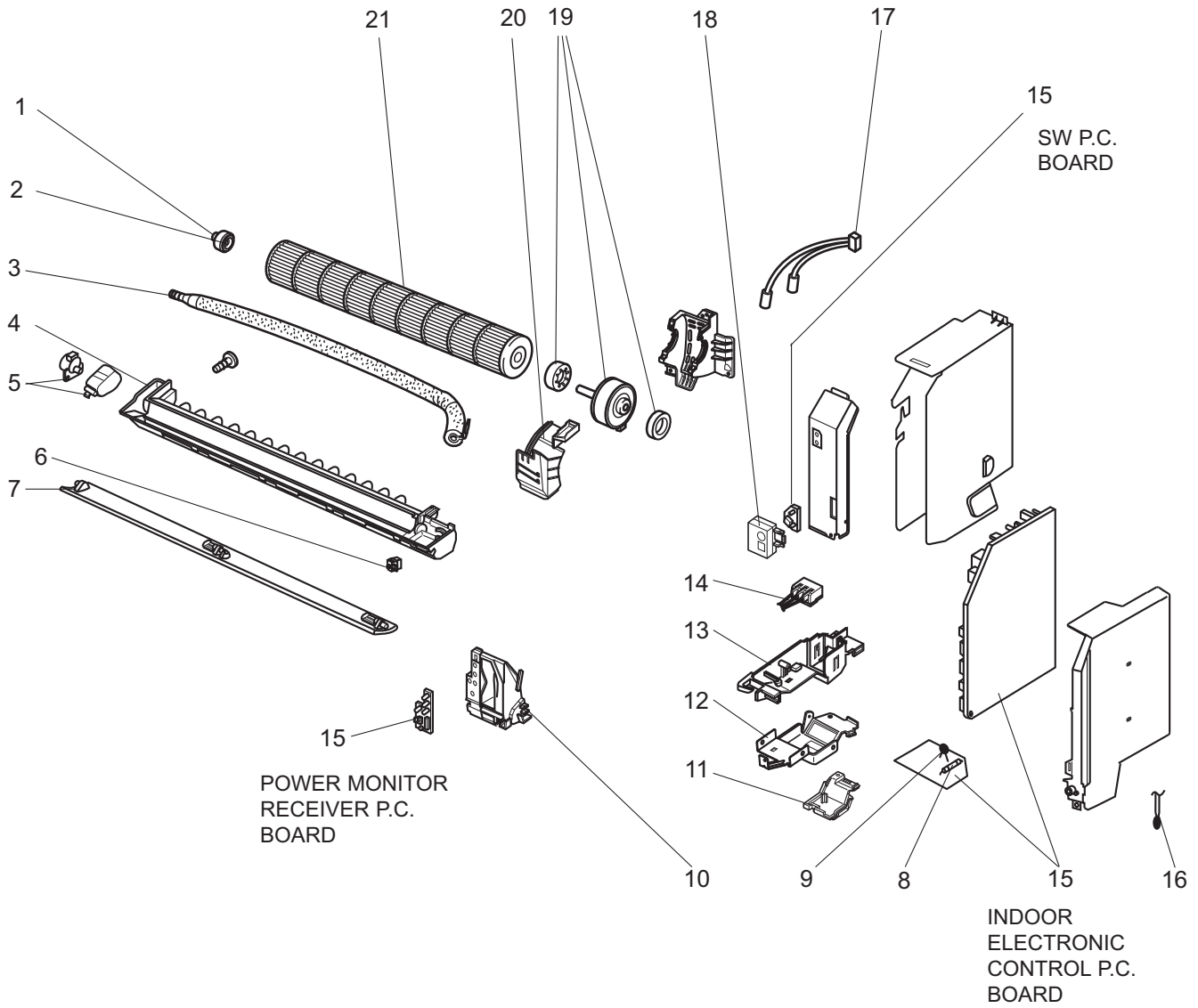
11-2. ACCESSORY AND REMOTE CONTROLLER

9	G	E12 915 426	REMOTE CONTROLLER		1	KM05B
10	G	E12 527 083	REMOTE CONTROLLER HOLDER		1	

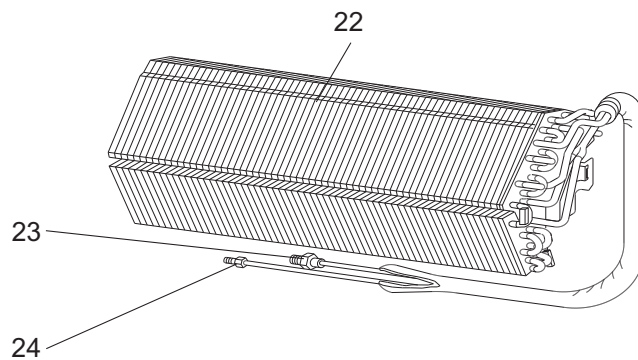
RoHS PARTS LIST (RoHS compliant)

MSZ-GB50VA

11-3. INDOOR UNIT ELECTRICAL PARTS AND FUNCTIONAL PARTS



11-4. INDOOR UNIT HEAT EXCHANGER



RoHS PARTS LIST (RoHS compliant)

11-3. INDOOR UNIT ELECTRICAL PARTS AND FUNCTIONAL PARTS

No.	RoHS	Part No.	Part name	Symbol in Wiring Diagram	Q'ty/unit	Remarks
					MSZ-GB50VA- E1	
1	G	E12 751 509	BEARING MOUNT		1	
2	G	E12 001 504	SLEEVE BEARING		1	
3	G	E12 897 702	DRAIN HOSE		1	
4	G	E12 A88 235	NOZZLE ASSEMBLY		1	
5	G	E12 897 303	VANE MOTOR UNIT (HORIZONTAL)	MV	1	UP & DOWN
6	G	E12 897 316	INTERLOCK SWITCH(FAN)		1	
7	G	E12 913 040	HORIZONTAL VANE		1	
8	G	E12 A49 382	FUSE	F11	1	T3.15AL 250V
9	G	E12 661 385	VARISTOR	NR11	1	
10	G	E12 915 095	POWER MONITOR RECEIVER P.C. BOARD HOLDER		1	
11	G	E12 897 784	V.A. CLAMP		1	
12	G	E12 897 780	TERMINAL BLOCK COVER		1	
13	G	E12 897 779	TERMINAL BLOCK HOLDER		1	
14	G	E12 913 375	TERMINAL BLOCK	TB	1	
15	G	E12 A88 452	ELECTRONIC CONTROL P.C. BOARD *1		1	AUTO RESTART
16	G	E12 897 308	ROOM TEMPERATURE THERMISTOR	RT11	1	
17	G	E12 A56 307	INDOOR COIL THERMISTOR	RT12, RT13	1	
18	G	E12 915 782	SWITCH HOLDER		1	
19	G	E12 915 300	INDOOR FAN MOTOR *2	MF	1	RC0J30- □ □
20	G	E12 897 333	MOTOR BAND		1	
21	G	E12 897 302	LINE FLOW FAN		1	

*1 Including SW P.C. BOARD and POWER MONITOR RECEIVER P.C. BOARD

*2 Including FAN MOTOR RUBBER MOUNT (2 PCS/SET)

11-4. INDOOR UNIT HEAT EXCHANGER

22	G	E12 A88 620	INDOOR HEAT EXCHANGER		1	
23	G	E12 155 666	UNION (GAS)		1	φ12.7
24	G	E12 138 667	UNION (LIQUID)		1	φ6.35

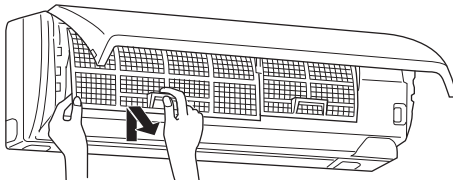
12-1. AIR CLEANING FILTER (ANTI-ALLERGY ENZYME FILTER)

- AIR CLEANING FILTER removes fine dust of 0.01 micron from air by means of static electricity.
- Normal life of AIR CLEANING FILTER is 1 year.
If AIR CLEANING FILTER is to be washed, soak AIR CLEANING FILTER in water (when showing dirt, in lukewarm water) and rinse it delicately, without removing the filter from the frame about once every 3 months.
- Clogged AIR CLEANING FILTER may reduce the air conditioner capacity or cause frost on the air outlet.
- Do not remove or attach AIR CLEANING FILTER during unit operation.

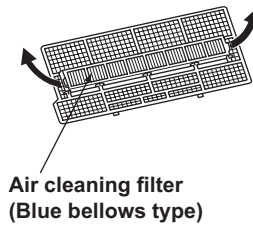
Model	Part No.
MSZ-GB50VA - E1	MAC-415FT-E

Replacement of the air cleaning filter

- (1) Remove the catechin air filter(left one)
The air cleaning filter cannot be attached to the right side catechin air filter.



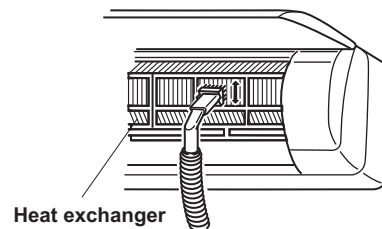
- (2) Remove the air cleaning filter(Blue bellows type) from the catechin air filter.



12-2. QUICK CLEAN KIT

- You can sweep the surface of heat exchanger if you install the special-made brush to your vacuum cleaner.

Model	Part No.	
MSZ-GB50VA - E1	MAC-093SS-E	





HEAD OFFICE: TOKYO BLDG., 2-7-3, MARUNOUCHI, CHIYODA-KU, TOKYO 100-8310, JAPAN

© Copyright 2006 MITSUBISHI ELECTRIC ENGINEERING CO.,LTD

Distributed in Mar. 2006. No. OB454 6

Made in Japan

New publication, effective Mar. 2006
Specifications subject to change without notice.