

Revision D:

- The fan guards for MUZ-GE50VA(H) - [E1], MUZ-GE60VA - [E1] and MUZ-GE71VA - [E1] have been changed.

Please void OBB516 REVISED EDITION-C.

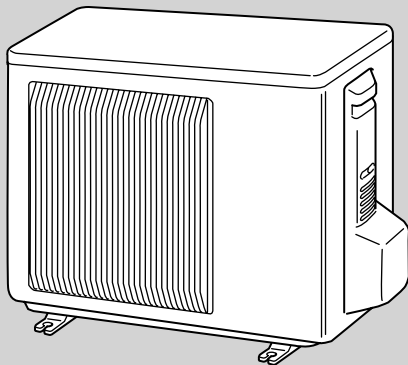
OUTDOOR UNIT PARTS CATALOG

No. OBB516
REVISED EDITION-D

Models

MUZ-GE25VA - [E1]	MUZ-GE60VA - [E1]
MUZ-GE25VAH - [E1]	MUZ-GE71VA - [E1]
MUZ-GE35VA - [E1]	
MUZ-GE35VAH - [E1]	
MUZ-GE42VA - [E1]	
MUZ-GE42VAH - [E1]	
MUZ-GE50VA - [E1]	
MUZ-GE50VAH - [E1]	

MUZ-GE25VA
MUZ-GE35VA
MUZ-GE42VA



CONTENTS

1. RoHS PARTS LIST.....	2
-------------------------	---

SERVICE MANUAL (OBH516)

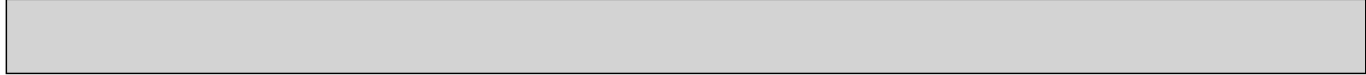
NOTE:
RoHS compliant products have <G> mark on the spec name plate.



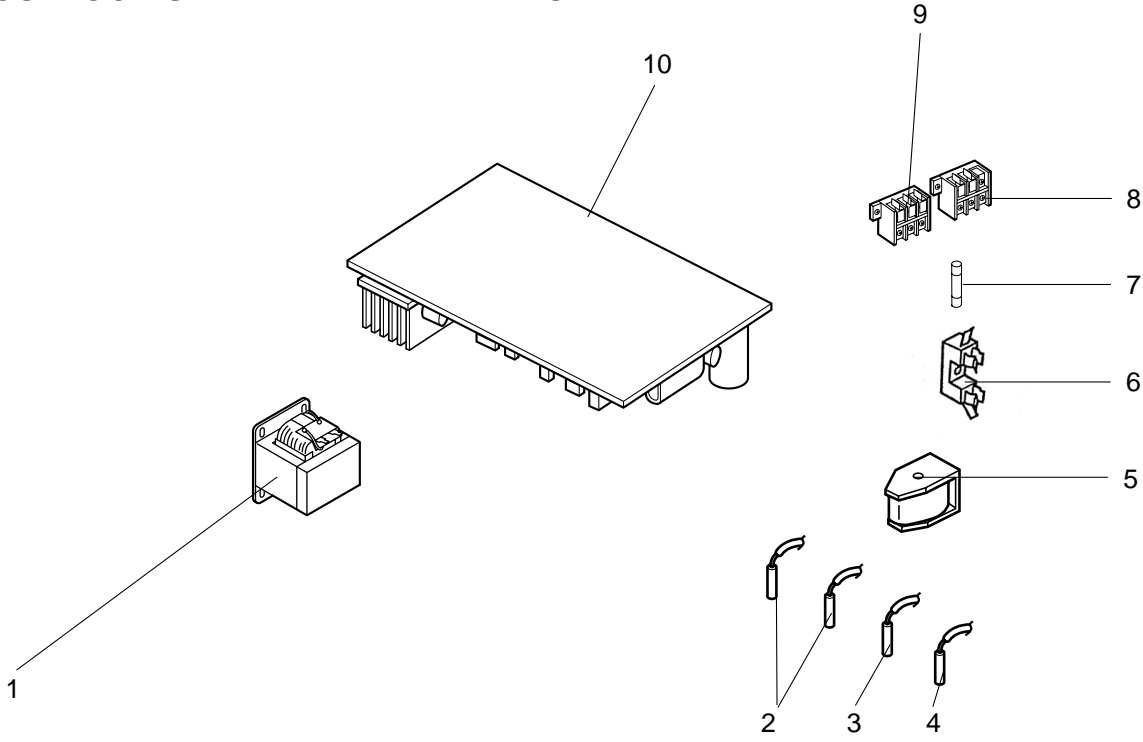
1-1. OUTDOOR UNIT STRUCTURAL PARTS AND FUNCTIONAL PARTS

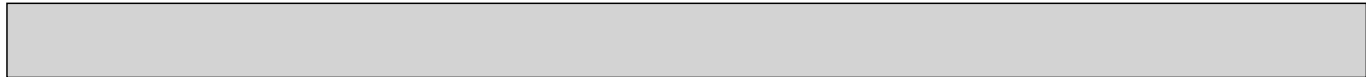
Part numbers that are circled are not shown in the illustration.

No.	R/HS	Part No.	Part Name	Symbol in Wiring Diagram	Q'ty/unit						Remarks	
					MUZ-GE25		MUZ-GE35		MUZ-GE42			
					VA - [E1]	VAH- [E1]	VA - [E1]	VAH - [E1]	VA - [E1]	VAH - [E1]		
1	G	E12 927 232	CABINET		1	1	1	1	1	1		
2	G	E12 927 521	GRILLE		1	1	1	1	1	1		
3	G	E12 927 501	PROPELLER		1	1	1	1	1	1		
4	G	E12 D69 290	BASE		1		1		1			
	G	E12 D70 290				1		1		1		
5	G	E12 D69 900	COMPRESSOR	MC	1	1					KNB073FFDHC KNB092FFAHC SNB130FGBHT	
	G	E12 D70 900					1	1				
	G	E12 E05 900							1	1		
6	G	E12 065 506	COMPRESSOR RUBBER SET		3	3	3	3	3	3	3 RUBBERS/SET	
	G	E12 C34 506						3	3			
7	G	E12 D69 661	STOP VALVE (GAS)		1	1	1	1			ø9.52	
	G	E12 927 661						1	1			
8	G	E12 D58 662	STOP VALVE (LIQUID)		1	1	1	1			ø6.35	
	G	E12 927 662						1	1			
9	G	E12 927 245	SERVICE PANEL		1	1	1	1	1	1		
10	G	E12 927 233	BACK PANEL		1	1	1	1				
	G	E12 C37 233						1	1			
11	G	E12 927 640	EXPANSION VALVE		1	1	1	1				
	G	E12 838 640						1	1			
12	G	E12 927 493	EXPANSION VALVE COIL	LEV	1	1	1	1	1	1		
14	G	E12 D65 961	4-WAY VALVE		1	1	1	1	1	1		
	G	E12 928 079				1						
15	G	E12 930 079	THERMO HOLDER				1			1		
	G	E12 928 525				1						
16	G	E12 930 525	CONDENSER WIRE NET				1			1		
	G	E12 B83 523			1		1					
17	G	E12 929 523	CONDENSER NET			1		1				
	G	E12 928 523					1		1			
18	G	E12 D69 293	SEPARATOR		1							
	G	E12 D77 293				1						
	G	E12 C34 293				1		1				
	G	E12 C36 293					1		1			
19	G	E12 927 515	MOTOR SUPPORT		1	1						
	G	E12 929 515				1	1	1	1			
20	G	E12 927 297	TOP PANEL		1	1	1	1	1	1		
21	G	E12 D69 630	OUTDOOR HEAT EXCHANGER		1	1						
	G	E12 D70 630				1	1	1	1			
22	G	E12 D69 301	OUTDOOR FAN MOTOR	MF	1	1	1	1			RC0J50-□□	
	G	E12 C34 301							1	1		RC0J50-□□
23	G	E12 C36 526	DEFROST HEATER	H		1		1		1		
24	G	E12 C36 381	HEATER PROTECTOR	26H		1		1		1		
25	G	E12 927 937	CAPILLARY TUBE		1	1	1	1	1	1	ø3.0×ø2.0×240	
26	G	E12 735 936	CAPILLARY TUBE				2	2	2	2	ø3.0×ø1.8×600	
27	G	E12 838 704	DRAIN SOCKET		1		1		1			



**MUZ-GE25VA MUZ-GE25VAH MUZ-GE35VA MUZ-GE35VAH
MUZ-GE42VA MUZ-GE42VAH
1-2. OUTDOOR UNIT ELECTRICAL PARTS**

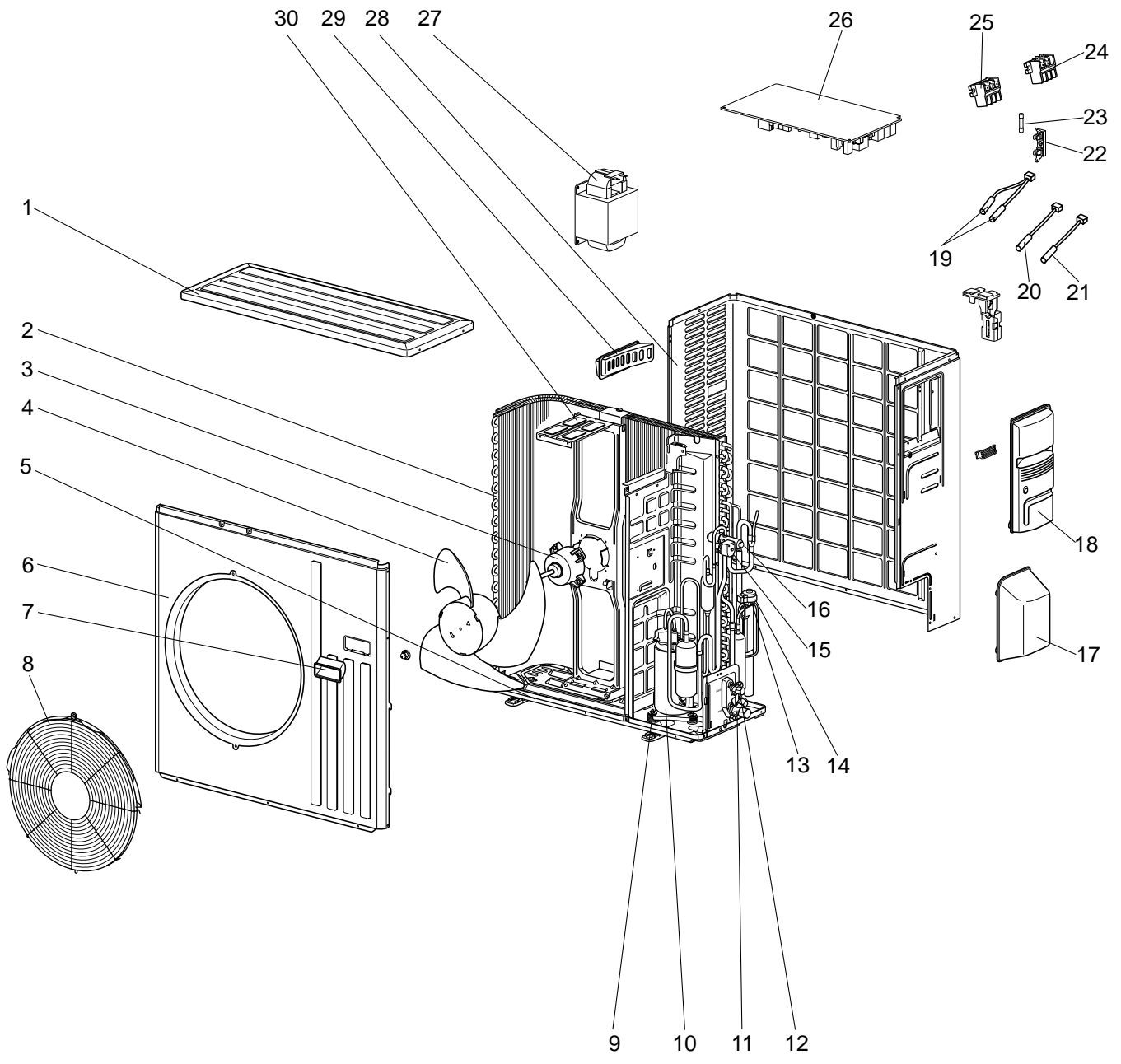




1-2. OUTDOOR UNIT ELECTRICAL PARTS

No.	RoHS	Part No.	Part Name	Symbol in Wiring Diagram	Q'ty/unit						Remarks
					MUZ-GE25		MUZ-GE35		MUZ-GE42		
					VA- ^[E1]	VAH- ^[E1]	VA- ^[E1]	VAH- ^[E1]	VA- ^[E1]	VAH- ^[E1]	
1	G	E12 B72 337	REACTOR	L61	1	1					
	G	E12 838 337					1	1	1	1	
2	G	E12 C34 306	THERMISTOR SET	RT61, RT62	1	1	1	1	1	1	DEFROST, DISCHARGE
3	G	E12 927 308	AMBIENT TEMPERATURE THERMISTOR	RT65	1	1	1	1	1	1	
4	G	E12 C34 307	OUTDOOR HEAT EXCHANGER TEMPERATURE THERMISTOR	RT68	1	1	1	1	1	1	
5	G	E12 C34 490	R.V. COIL	21S4	1	1	1	1	1	1	
6	G	E12 735 241	FUSE HOLDER		1	1	1	1	1	1	
7	G	E12 735 382	FUSE	F61	1	1	1	1	1	1	T20AL250V
8	G	E12 D69 374	TERMINAL BLOCK	TB1	1	1	1	1	1	1	3 P
9	G	E12 D70 374	TERMINAL BLOCK	TB2	1	1	1	1	1	1	3 P
10	G	E12 D69 451	INVERTER P.C. BOARD		1						Including heat sink and RT64
	G	E12 D77 451				1					
	G	E12 D70 451					1				
	G	E12 D78 451						1			
	G	E12 E03 451							1		
	G	E12 E04 451								1	

MUZ-GE50VA MUZ-GE50VAH
1-3. OUTDOOR UNIT STRUCTURAL PARTS, ELECTRICAL PARTS AND FUNCTIONAL PARTS



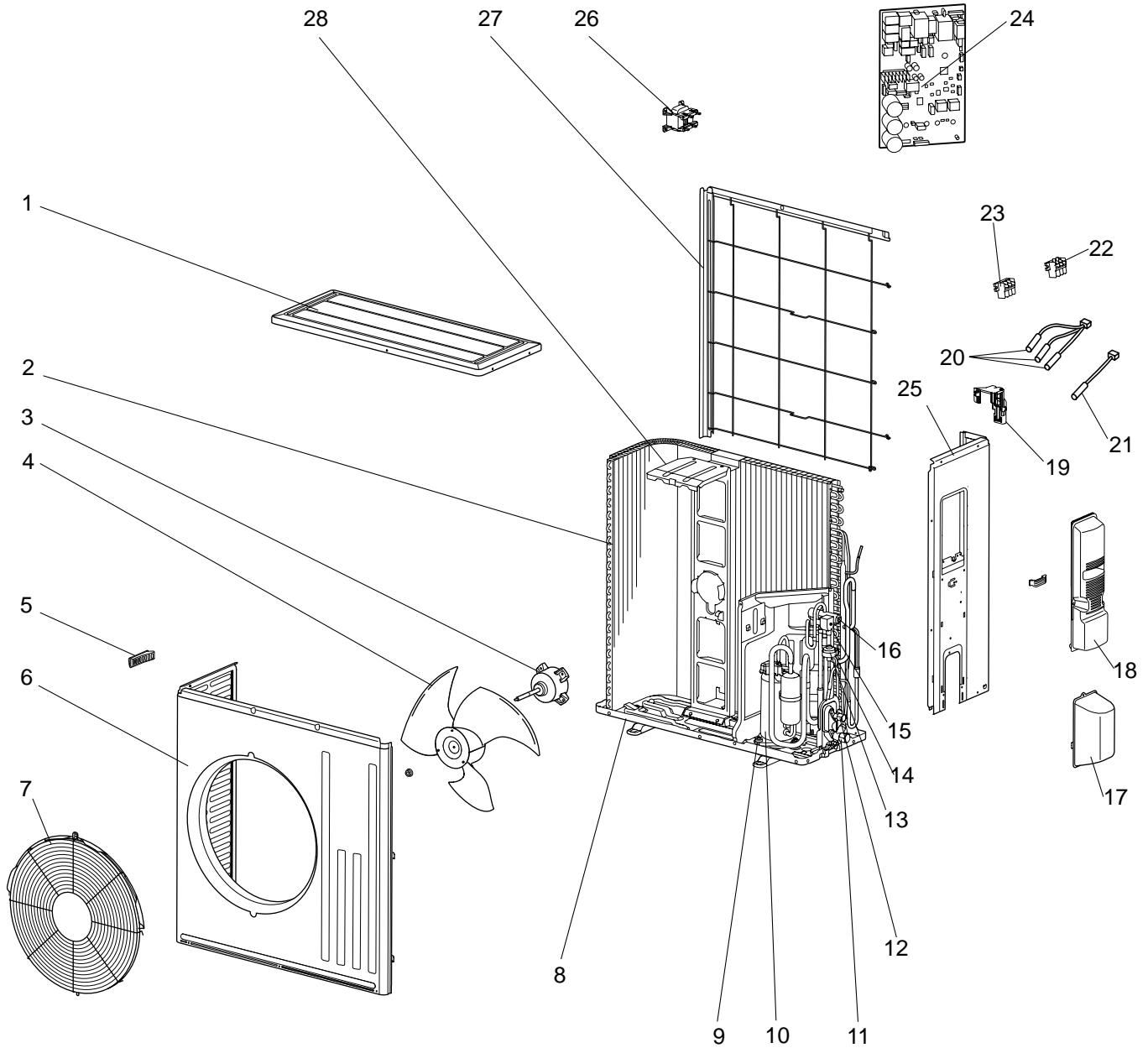
1-3. OUTDOOR UNIT STRUCTURAL PARTS, ELECTRICAL PARTS AND FUNCTIONAL PARTS

Part numbers that are circled are not shown in the illustration.

No.	RoHS	Part No.	Part Name	Symbol in Wiring Diagram	Q'ty/unit		Remarks
					MUZ-GE		
					50VA- <input type="checkbox"/>	50VAH- <input type="checkbox"/>	
1	G	E12 819 297	TOP PANEL		1	1	
2	G	E12 D84 630	OUTDOOR HEAT EXCHANGER		1	1	
3	G	E12 938 301	OUTDOOR FAN MOTOR	MF	1	1	RC0J60-□□
4	G	E12 851 501	PROPELLER		1	1	
5	G	E12 D86 290	BASE		1		
	G	E12 D84 290				1	
6	G	E12 819 232	CABINET		1	1	
7	G	E12 819 009	HANDLE		1	1	
8	G	E12 D84 521	FAN GUARD		1	1	Including ice guard
9	G	E12 C34 506	COMPRESSOR RUBBER SET		3	3	3 RUBBERS/SET
10	G	E12 E05 900	COMPRESSOR	MC	1	1	SNB130FGBHT
11	G	E12 D58 661	STOP VALVE (GAS)		1	1	∅12.7
12	G	E12 D58 662	STOP VALVE (LIQUID)		1	1	∅6.35
13	G	E12 851 640	EXPANSION VALVE		1	1	
14	G	E12 E05 493	EXPANSION VALVE COIL	LEV	1	1	
15	G	E12 D58 490	R.V. COIL	21S4	1	1	
16	G	E12 C18 961	4-WAY VALVE		1	1	
17	G	E12 819 650	VALVE COVER		1	1	
18	G	E12 819 245	SERVICE PANEL		1	1	
19	G	E12 E05 308	THERMISTOR SET	RT61,RT62	1	1	DEFROST, DISCHARGE
20	G	E12 D58 309	AMBIENT TEMPERATURE THERMISTOR	RT65	1	1	
21	G	E12 E05 307	OUTDOOR HEAT EXCHANGER TEMPERATURE THERMISTOR	RT68	1	1	
22	G	E12 735 241	FUSE HOLDER		1	1	
23	G	E12 735 382	FUSE	F61	1	1	T20AL250V
24	G	E12 D69 374	TERMINAL BLOCK	TB1	1	1	3 P
25	G	E12 D70 374	TERMINAL BLOCK	TB2	1	1	3 P
26	G	E12 E05 451	INVERTER P.C. BOARD		1		Including heat sink and RT64
	G	E12 E06 451				1	
27	G	E12 D58 337	REACTOR	L61	1	1	
28	G	E12 E09 233	BACK PANEL (OUT)		1		
	G	E12 E06 233				1	
29	G	E12 817 009	HANDLE		1	1	
30	G	E12 851 515	MOTOR SUPPORT		1	1	
31	G	E12 853 936	CAPILLARY TUBE (TAPER PIPE)		1	1	∅3.6 × ∅2.4 × 50
32	G	E12 E05 381	HEATER PROTECTOR	26H		1	
33	G	E12 E05 526	DEFROST HEATER	H		1	
34	G	E12 817 704	DRAIN SOCKET		1		
35	G	E12 444 705	DRAIN CAP		2		

MUZ-GE60VA MUZ-GE71VA

1-4. OUTDOOR UNIT STRUCTURAL PARTS, ELECTRICAL PARTS AND FUNCTIONAL PARTS



1-4. OUTDOOR UNIT STRUCTURAL PARTS, ELECTRICAL PARTS AND FUNCTIONAL PARTS

Part numbers that are circled are not shown in the illustration.

No.	RoHS	Part No.	Part Name	Symbol in Wiring Diagram	Q'ty/unit		Remarks	
					MUZ-GE			
					60VA- [E1]	71VA- [E1]		
1	G	E12 F28 297	TOP PANEL		1	1		
2	G	E12 F28 630	OUTDOOR HEAT EXCHANGER		1			
	G	E12 F29 630	OUTDOOR HEAT EXCHANGER			1		
3	G	E12 F28 301	OUTDOOR FAN MOTOR	MF	1	1	RC0J60-□□	
4	G	E12 F28 501	PROPELLER		1	1		
5	G	E12 817 009	HANDLE		1	1		
6	G	E12 F28 232	CABINET		1	1		
7	G	E12 F73 521	FAN GUARD		1	1	Including ice guard	
8	G	E12 F28 290	BASE		1	1		
9	G	E12 C34 506	COMPRESSOR RUBBER SET		3	3	3 RUBBERS/SET	
10	G	E12 F28 900	COMPRESSOR	MC	1		SNB130FGBMT	
	G	E12 F29 900	COMPRESSOR	MC		1	SNB172FEKMT	
11	G	E12 F28 661	STOP VALVE (GAS)		1	1	∅15.88	
12	G	E12 F28 662	STOP VALVE (LIQUID)		1		∅6.35	
	G	E12 F29 662	STOP VALVE (LIQUID)			1	∅9.52	
13	G	E12 851 640	EXPANSION VALVE		1			
	G	E12 853 640	EXPANSION VALVE			1		
14	G	E12 F28 493	EXPANSION VALVE COIL	LEV	1	1		
15	G	E12 F28 490	R.V. COIL	21S4	1	1		
16	G	E12 C18 961	4-WAY VALVE		1	1		
17	G	E12 F28 650	VALVE COVER		1	1		
18	G	E12 F28 245	SERVICE PANEL		1	1		
19	G	E12 F28 079	THERMO HOLDER		1	1		
20	G	E12 F28 308	THERMISTOR SET	RT61,RT62, RT68	1	1	DEFROST, DISCHARGE, OUTDOOR HEAT EXCHANGER TEMPERATURE	
21	G	E12 F28 309	AMBIENT TEMPERATURE THERMISTOR	RT65	1	1		
22	G	E12 F29 374	TERMINAL BLOCK	TB1	1	1	3 P	
23	G	E12 F28 374	TERMINAL BLOCK	TB2	1	1	3 P	
24	G	E12 F31 451	INVERTER P.C. BOARD		1		Including heat sink and RT64	
	G	E12 F32 451				1		
25	G	E12 F28 233	BACK PANEL (OUT)		1	1		
26	G	E12 F28 337	REACTOR	L	1	1		
27	G	E12 F28 523	CONDENSER NET		1	1		
28	G	E12 F28 515	MOTOR SUPPORT		1	1		
29	G	E12 527 936	CAPILLARY TUBE		1	1	∅4.0 × ∅2.4 × 100	
30	G	E12 F28 704	DRAIN SOCKET		1	1		



© Copyright 2008 MITSUBISHI ELECTRIC CO.,LTD
Distributed in Jun. 2010. No. OBB516 REVISED EDITION-D 5
Distributed in Jan. 2010. No. OBB516 REVISED EDITION-C 5
Distributed in Oct. 2009. No. OBB516 REVISED EDITION-B 5
Distributed in Dec. 2008. No. OBB516 REVISED EDITION-A 5
Distributed in Aug. 2008. No. OBB516 6
Made in Japan

New publication, effective Jun. 2010
Specifications subject to change without notice.