

# **SERVICE PARTS LIST FOR MITSUBISHI ELECTRIC PACKAGED AIR-CONDITIONERS**

**Series PURY-P-YMF-B**

**REVISED  
Aug. 2003**

## **INDEX**

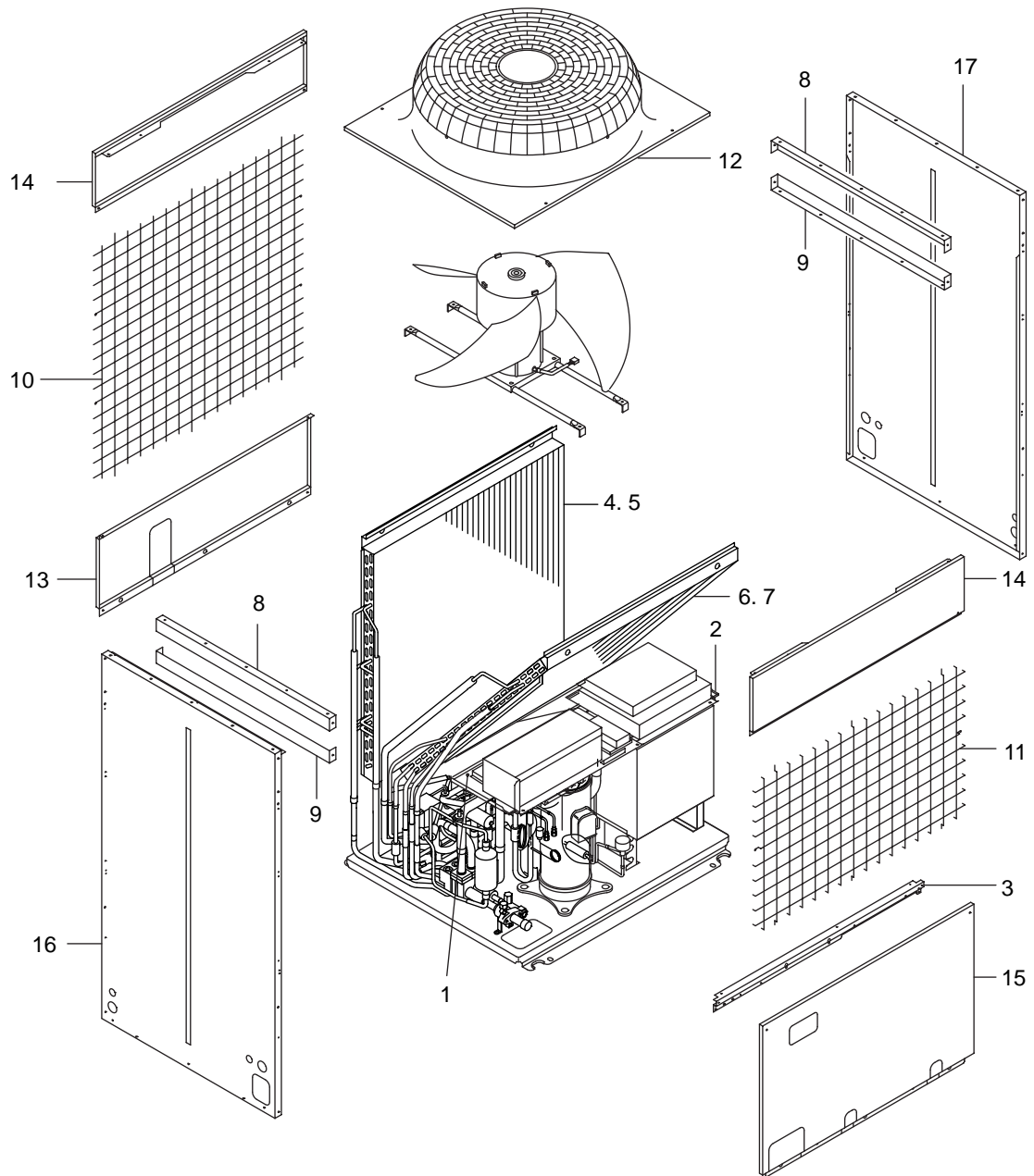
**PURY-P200YMF-B**

**PURY-P250YMF-B**



PURY-P200YMF-B  
PURY-P250YMF-B

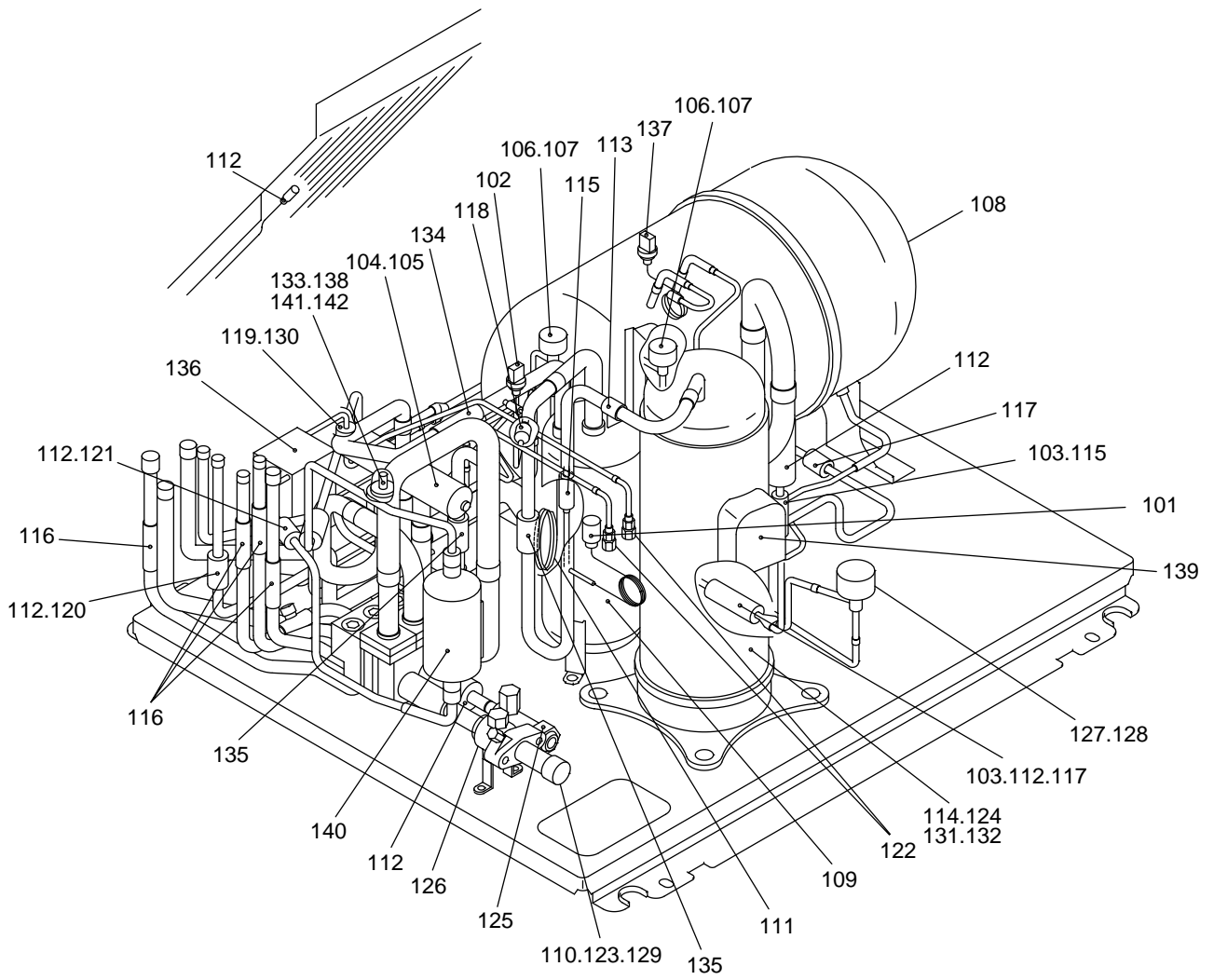
EXTERNAL PARTS





PURY-P200YMF-B  
PURY-P250YMF-B

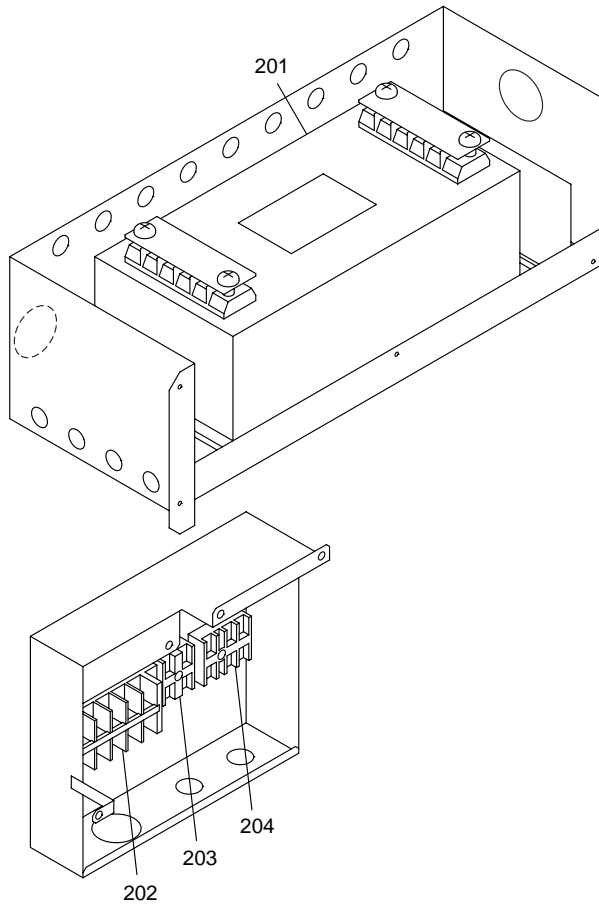
### FUNCTIONAL PARTS



No.	Part No.	Part Name	Spec.	-P200YMF-B	-P250YMF-B					Dwg. No.	Price
101	R61 Y06 208	Pressure switch	ACBQB07<63H>	1	1					P426258X02	
102	R61 331 288	Pressure sensor	<63HS>	1	1					P419110X01	
103	R61 Y01 237	Liquid level detecting heater	<CH2,3>	1	1					P493553X02	
104	R61 Y02 154	Four way valve	with a coil	1	1					W893224G01	
105	R61 Y10 242	Four way valve coil	<21S4>	1	1					W893225G01	
106	R61 435 232	Solenoid valve	NEV-202DXF	2	2					P631807X02	
107	R61 Y04 243	Solenoid valve coil	NEV,<SV1,2>	2	2					P631205X01	
108	R61 Y03 110	Accumulator ass'y		1	1					W266549G02	
109	R61 Y05 487	Oil separator ass'y		1	1					W266571G01	
110	R61 E91 494	Pipe ass'y			1					W619465G05	
111	R61 F14 425	Capillary tube ass'y	1.2X3-1000	1	1					W864233G01	
112	R61 670 202	Thermistor	NTH3A14<TH3~7,9>	6	6					P425496X01	
113	R61 671 202	Thermistor	<TH1>	1	1					P425439X01	
114	R69 963 478	Scroll compressor	HEV92FA1-YB,<MC>	1	1					EP10013G08	
115	R61 155 454	Strainer	6.35D	2	2					W882822G01	
116	R61 Y02 454	Strainer		4	4					W858399G02	
117	R61 A42 454	Strainer	9.52D	2	2					W882823G01	
118	R61 376 454	Strainer		1	1					P643206X01	
119	R61 A42 287	Sensor cover	EVA,6.35D	1	1					P227170X01	
120	R61 A45 287	Sensor cover	EVA,12.7D	1	1					P227171X01	
121	R61 G03 287	Sensor cover	EVA,9.52D	1	1					P227223X01	
122	R61 F14 413	Check joint		2	2					P639131X01	
123	R61 F14 514	Packing		1	1					P321009X01	
124	R61 Y08 262	Belt heater	240V 45W,<CH1>	1	1					P493642X02	
125	R61 Y02 410	Ball valve	3/4	1	1					P636224X01	
126	R61 F14 411	Ball valve	1frange	1	1					P636219X02	
127	R61 G48 401	Linear expansion valve		1	1					P632342X01	
128	R61 A45 402	Linear expansion valve coil	SLEV	1	1					P632298X01	
129	R61 E90 494	Pipe ass'y		1						W619465G04	
130	R61 F14 200	Thermistor	<TH2>	1	1					P425565X01	
131	R61 Y01 850	Insulator		1	1					W628447H02	
132	R61 Y02 850	Insulator		1	1					W861746H02	
133	R61 Y01 232	Solenoid valve	SR10DB	4	4					P631230X01	
134	R61 800 454	Strainer		1	1					W834000H02	
135	R61 F14 418	Check valve		2	2					P639130X01	
136	R61 F14 426	Capillary tube ass'y	0.8X2.4-2000	2	2					W864252G01	
137	R61 G35 288	Pressure sensor	<63LS>	1	1					P419129X01	
138	R61 Y06 243	Solenoid valve coil	SR10DB<SV3-6>	4	4					P631231X01	
139	R61 375 200	Thermistor	<TH10>	1	1					P425438X01	
140	R61 M43 405	Drier		1	1					W894128G02	
141	R61 H50 232	Solenoid valve block ass'y		1	1					W629956G04	
142	R61 H35 235	Fasten part for solenoid valve		1	1					W887645G01	

PURY-P200YMF-B  
 PURY-P250YMF-B

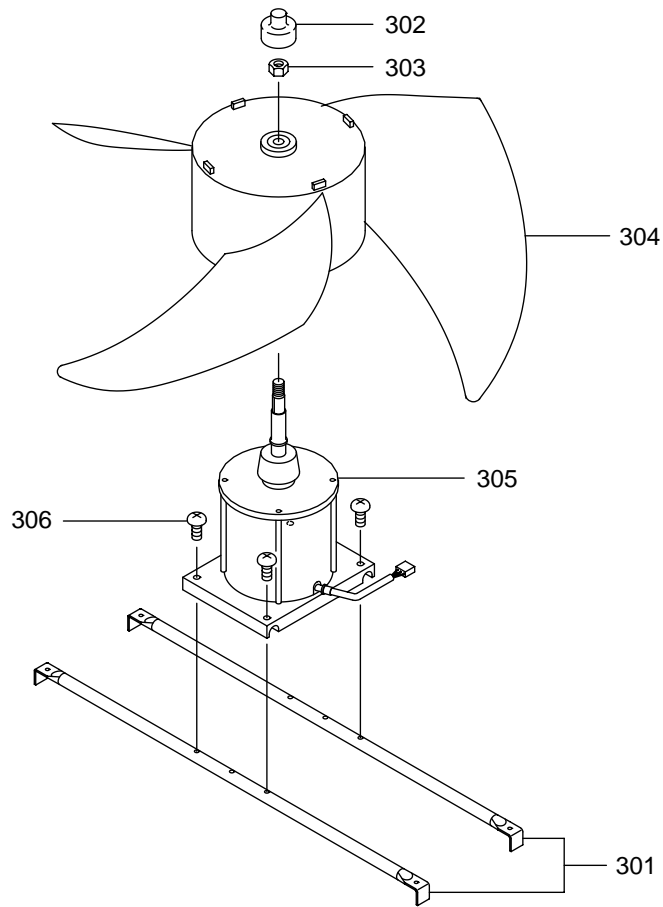
NOISE FILTER PARTS



No.	Part No.	Part Name	Spec.	-P200YMF-B	-P250YMF-B						Dwg. No.	Price
201	R61 Y05 293	NF	VF4030C-MX2	1	1						W638330G01	
202	R61 Y02 246	Terminal bed for LVD		1	1						P436135X01	
203	R61 435 246	Terminal bed		1	1						A73S950H02	
204	R61 336 247	Terminal bed		1	1						P436113X02	

PURY-P200YMF-B  
 PURY-P250YMF-B

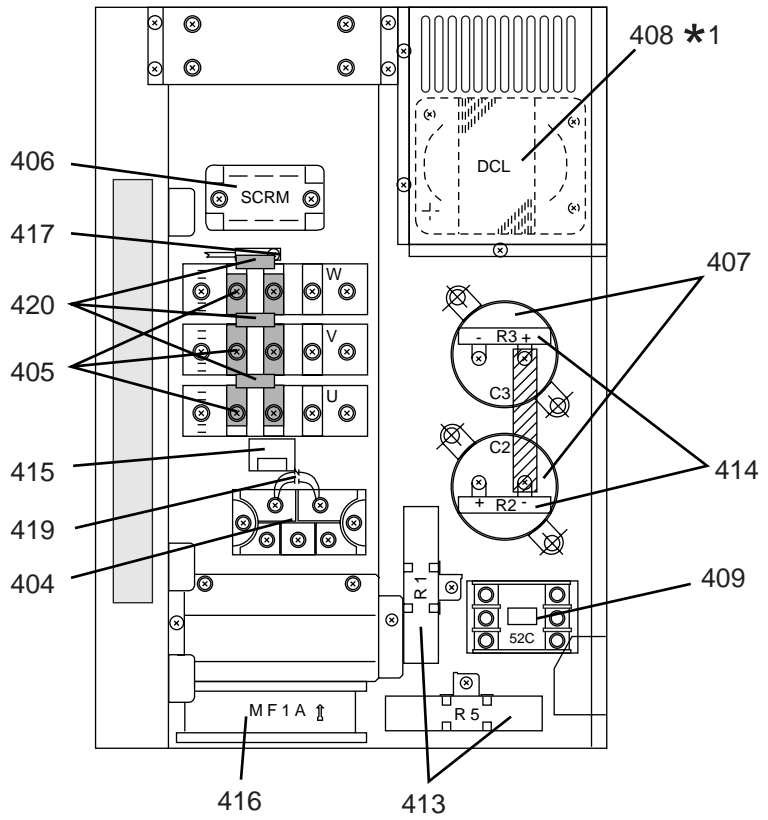
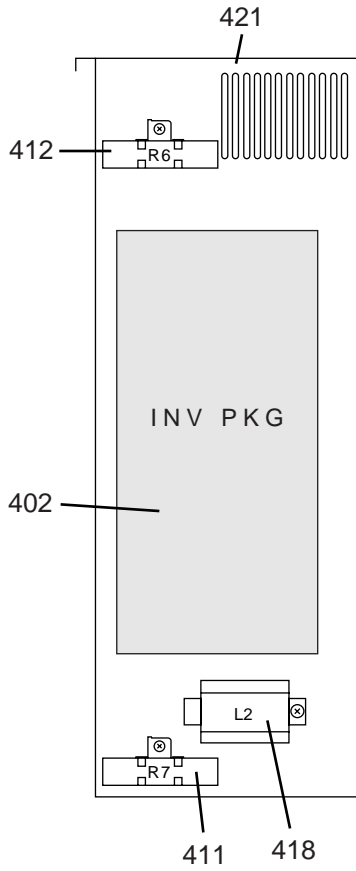
BLOWER PARTS



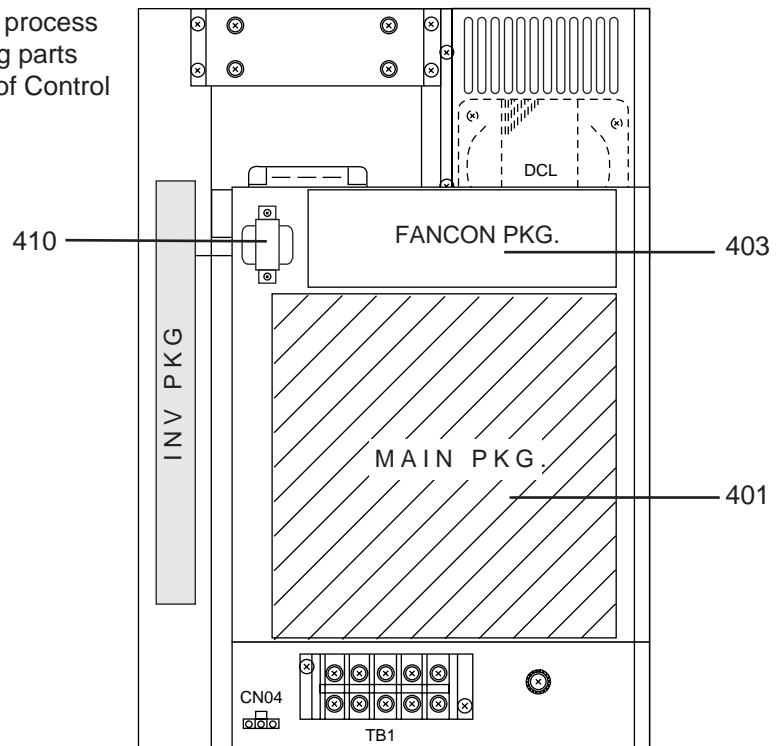
No.	Part No.	Part Name	Spec.	-P200YMF-B	-P250YMF-B					Dwg. No.	Price
301	R61 A42 140	Fan stand		2	2					W856127G05	
302	R61 A69 086	Cap		1	1					P221056X01	
303	R61 A42 122	Nut 16		1	1					P541016X01	
304	R61 E66 115	Propeller fan	750D	1	1					W872619G01	
305	R61 Y84 220	Motor	NFS-3508J1<MF>	1	1					P714535X03	
306	R61 E90 087	Screw	6X14	4	4					P521020X01	
307	R61 A42 136	Washer	17X32	1	1					P562006X01	
308	R61 A45 136	Washer	20.5X40	1	1					P562007X01	

PURY-P200YMF-B  
 PURY-P250YMF-B

CONTROL BOX PARTS



\*1: It may be needed to process the hole for attaching parts into the metal plate of Control box.





CONTROL BOX PARTS

No.	Part No.	Part Name	Spec.	-P200YMF-B	-P250YMF-B						Dwg. No.	Price
401	R61 Y41 280	Main board	R-(P)YMFB	1	1						W266235G02	
402	R61 Y32 280	INV board		1	1						P718386X01	
403	R61 Y47 280	Fan controller board		1	1						W629556G01	
404	R61 Y10 320	Diode	6RI75G-160	1	1						W876941G04	
405	R61 Y13 320	Transistor	2DI75M-120	3	3						W848413G08	
406	R61 Y07 320	Silicon controlled rectifiers	PFB15AA120	1	1						S414032H01	
407	R61 Y18 252	Condenser	400WV,4700 $\mu$ F<C2,3>	2	2						P412265X01	
*1	408	R61 Y01 259	Reactor	1.92mH/34A<DCL>	1	1					P419149X01	
	409	R61 Y19 225	Magnet contactor	S-N18,AC230V<52C>	1	1					S427017H31	
	410	R61 Y14 260	Transformer	240V/40V<T1>	1	1					P715302X01	
	411	R61 670 234	Resistor	30W,22 $\Omega$ <R7>	1	1					P411113X01	
	412	R61 E69 234	Resistor	40W,110 $\Omega$ <R6>	1	1					P411131X01	
	413	R61 Y05 234	Resistor	40W,5k $\Omega$ <R1,5>	2	2					P411133X01	
	414	R61 Y02 234	Resistor	10W,33k $\Omega$ ,pitch=32<R2,3>	2	2					P411126X01	
	415	R61 A42 289	DCCT	HC-TN131V42XP12F	1	1					P419079X02	
	416	R61 Y02 300	Fan	109S025UL<MF1>	1	1					P712360X01	
	417	R61 F14 201	Thermistor	181-503-97151	1	1					P414095X01	
	418	R61 Y02 244	Choke coil	1A,30mH	1	1					P419121X01	
	419	R61 L85 252	ZNR+C		1	1					W886345G01	
	420	R61 Y11 252	Condenser	<C14,15,16>	3	3					W889943G01	
	421	R61 Y03 305	Control box		1	1					W266239G05	

