

SERVICE PARTS LIST FOR MITSUBISHI ELECTRIC PACKAGED AIR-CONDITIONERS

Series PUY-P-YMF-B

For use with the R407C

**REVISED
Jul. 2003**

INDEX

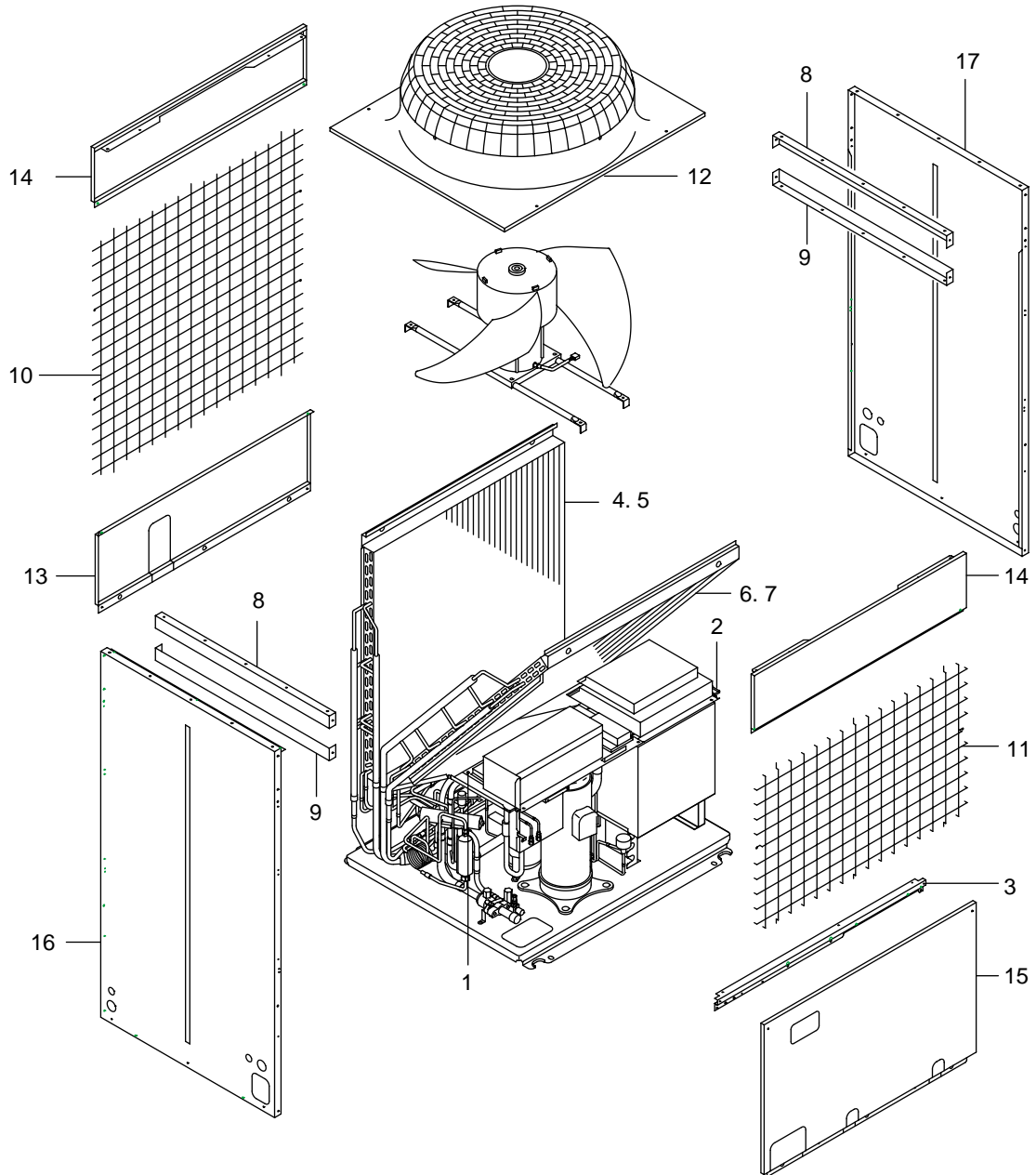
P U Y - P 2 0 0 Y M F - B

P U Y - P 2 5 0 Y M F - B



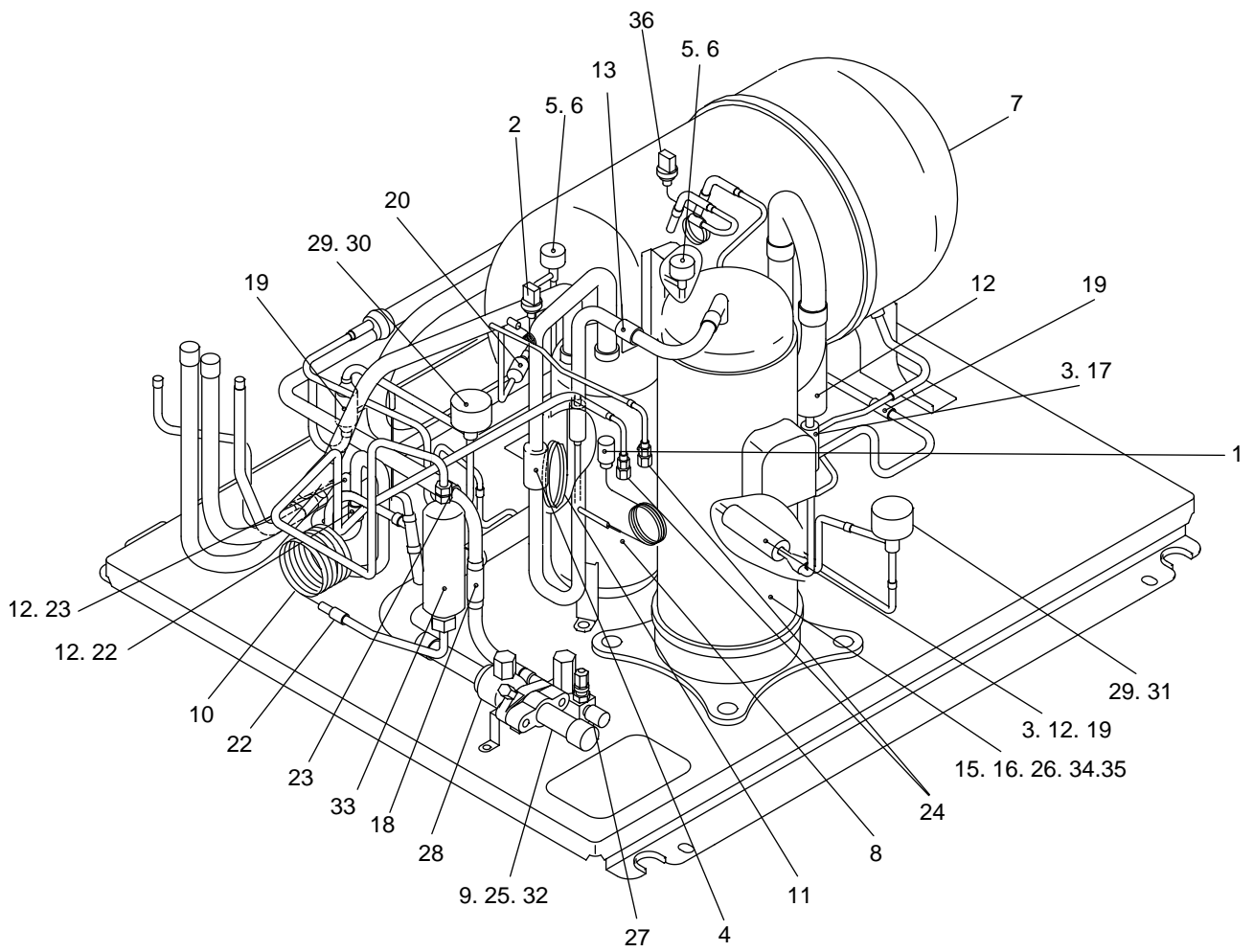
PUY-P200YMF-B
PUY-P250YMF-B

EXTERNAL PARTS



PUY-P200YMF-B
PUY-P250YMF-B

FUNCTIONAL PARTS



PUY-P200YMF-B
 PUY-P250YMF-B

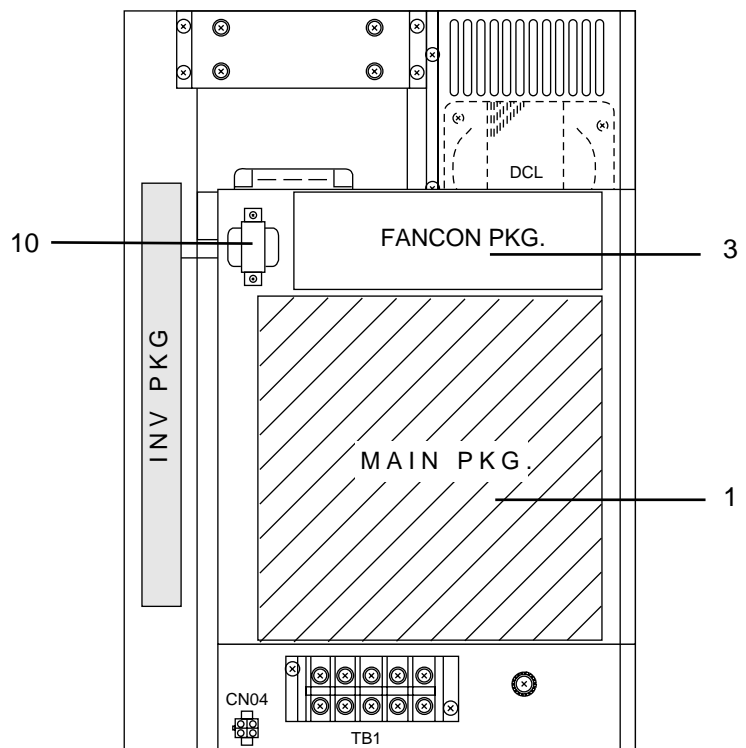
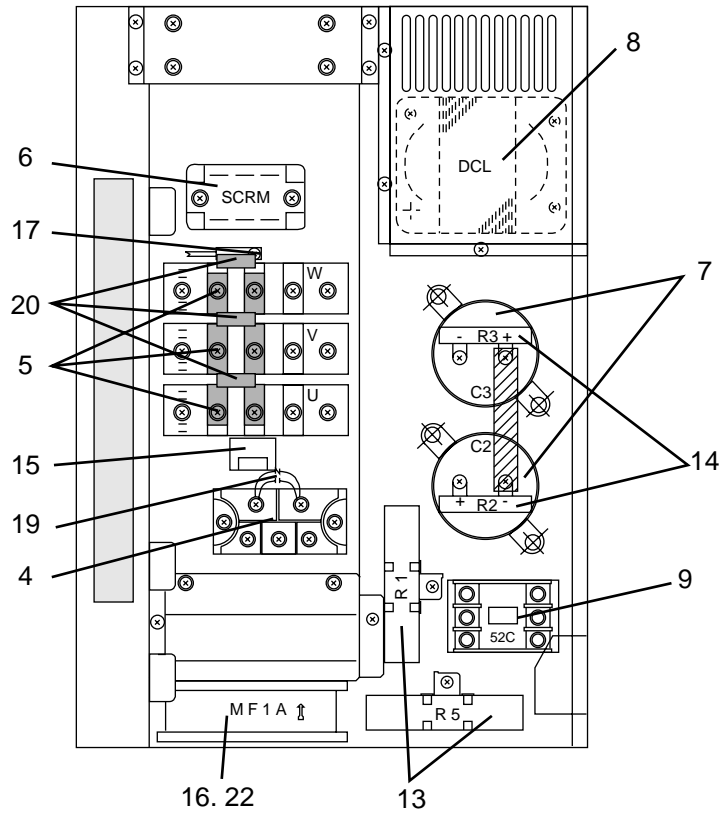
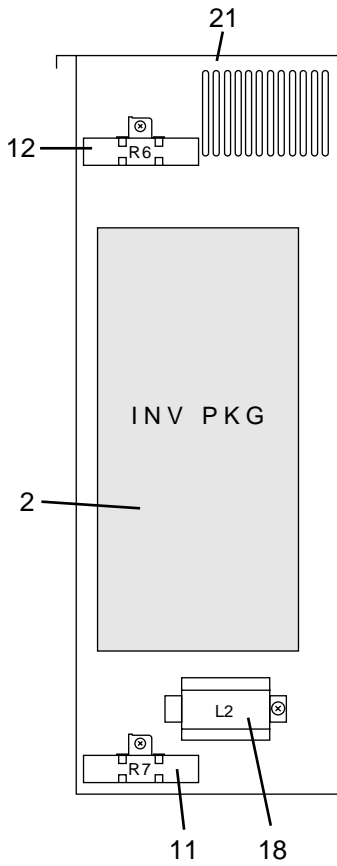
FUNCTIONAL PARTS

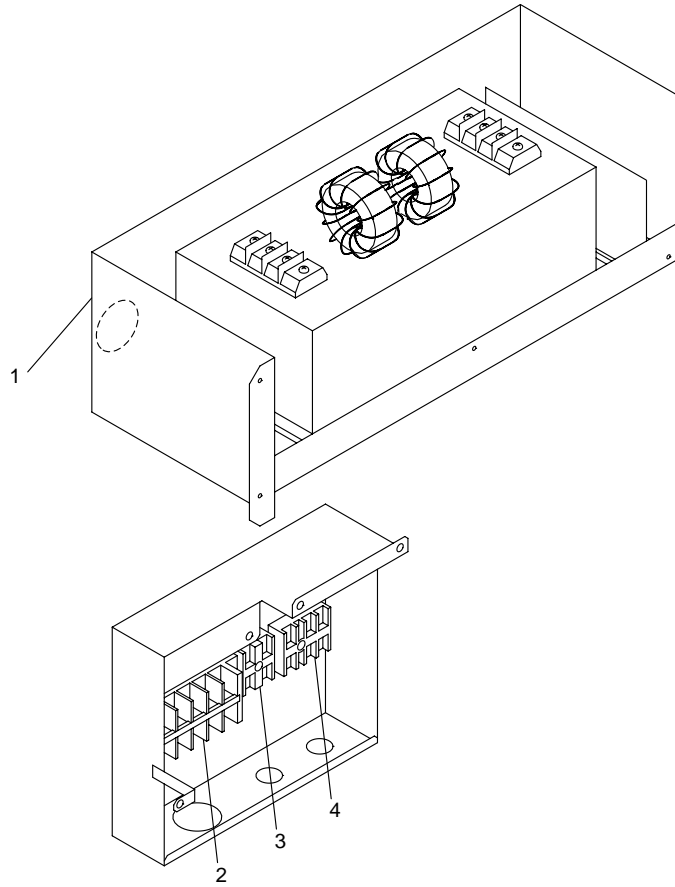
No.	Part No.	Part Name	Spec.	-P200YMF-B	-P250YMF-B						Dwg. No.	Price
1	R61 Y06 208	Pressure switch	<63H>	1	1						P426258X02	
2	R61 331 288	Pressure sensor	<63HS>	1	1						P419110X01	
3	R61 Y01 237	Liquid level detecting heater	<CH2,3>	1	1						P493553X02	
4	R61 F14 418	Check valve		1	1						P639130X01	
5	R61 435 232	Solenoid valve	NEV-202DXF	2	2						P631807X02	
6	R61 Y04 243	Solenoid valve coil	NEV,<SV1,2>	2	2						P631205X01	
7	R61 Y03 110	Accumulator ass'y		1	1						W266549G02	
8	R61 Y05 487	Oil separator ass'y		1	1						W266571G01	
9	R61 E90 494	Pipe ass'y		1							W619465G04	
10	R61 F14 426	Capillary tube processing	0.8X2.4-2000	2	2						W864252G01	
11	R61 F14 425	Capillary tube ass'y	1.2X3-2000	1	1						W864233G01	
12	R61 670 202	Thermistor	NTH3A14	7	7						P425496X01	
13	R61 671 202	Thermistor	<TH1>	1	1						P425439X01	
14	R61 F14 200	Thermistor	<TH2>	1	1						P425565X01	
15	R61 375 200	Thermistor	<TH10>	1	1						P425438X01	
16	R69 963 478	Scroll compressor	HEV92FA1-YB	1	1						EP10013G08	
17	R61 155 454	Strainer	6.35D	2	2						W882822G01	
18	R61 Y02 454	Strainer		1	1						W858399G01	
19	R61 A42 454	Strainer	9.52D	3	3						W882823G01	
20	R61 376 454	Strainer		1	1						P643206X01	
21	R61 A42 287	Sensor cover	EVA,6.35D	1	1						P227170X01	
22	R61 A45 287	Sensor cover	EVA,12.7D	2	2						P227171X01	
23	R61 A43 287	Sensor cover	EVA,16D	2	2						P227172X01	
24	R61 800 413	Check joint		2	2						BA50U666H04	
25	R61 F14 514	Packing	T/# 1991-NF	1	1						P321009X01	
26	R61 Y08 262	Belt heater	240V 45W,<CH1>	1	1						P493642X02	
27	R61 F14 410	Ball valve	1/2	1	1						P636220X01	
28	R61 A42 410	Ball valve	1frange	1	1						P636215X02	
29	R61 G48 401	Linear expansion valve	DKV-18	2	2						P632342X01	
30	R61 A45 401	Linear expansion valve coil	LEV1	1	1						P632299X01	
31	R61 A45 402	Linear expansion valve coil	SLEV	1	1						P632298X01	
32	R61 E91 494	Pipe ass'y			1						W619465G05	
33	R61 M43 405	Dryer	9.52X12.7	1	1						W894128G02	
34	R61 Y01 850	Insulator		1	1						W628447H02	
35	R61 Y02 850	Insulator		1	1						W861746H02	
36	R61 G35 288	Pressure sensor	<63LS>	1	1						P419129X01	

No. : For use with R407C

PUY-P200YMF-B
 PUY-P250YMF-B

CONTROL BOX PARTS

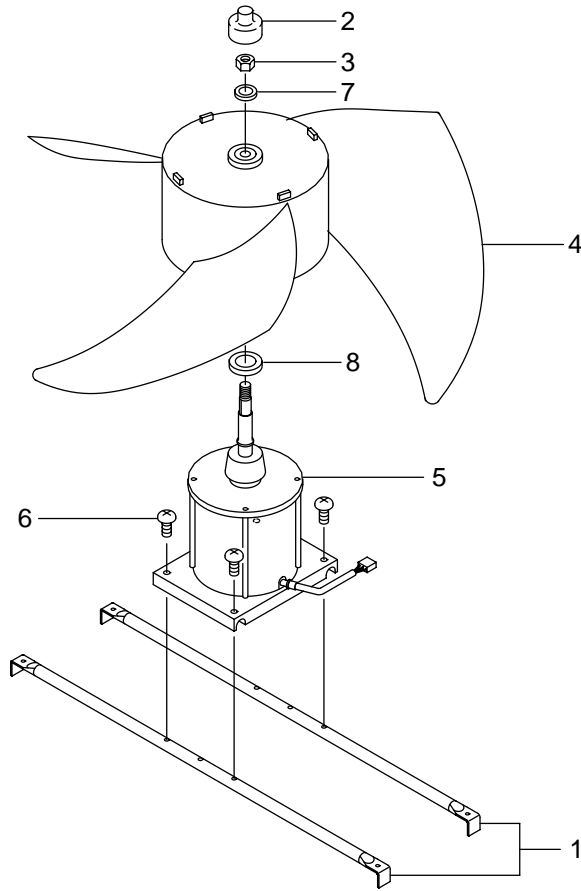




No.	Part No.	Part Name	Spec.	P200YMF-B	P250YMF-B					Dwg. No.	Price
1	R61 Y05 293	Noise filter box ass'y		1	1					W638330G01	
2	R61 Y02 246	Terminal bed for LVD		1	1					P436135X01	
3	R61 435 246	Terminal bed		1	1					A73S950H02	
4	R61 336 247	Terminal bed		1	1					P436113X02	

PUY-P200YMF-B
 PUY-P250YMF-B

BLOWER PARTS



No.	Part No.	Part Name	Spec.	-P200YMF-B	-P250YMF-B					Dwg. No.	Price
1	R61 A42 140	Fan stand		2	2					W856127G05	
2	R61 A69 086	Cap		1	1					P221056X01	
3	R61 A42 122	Nut 16		1	1					P541016X01	
4	R61 E66 115	Propeller fan	750D	1	1					W872619G01	
5	R61 Y84 220	Motor (350W 8P)	NFS-3508J1 <MF>	1	1					P714535X03	
6	R61 E90 087	Screw	6X14	4	4					P521020X01	
7	R61 A42 136	Washer	17X32	1	1					P562006X01	
8	R61 A45 136	Washer	20.5X40	1	1					P562007X01	

