

TECHNICAL & SERVICE MANUAL

Series PKFY Wall Mounted R407C / R22

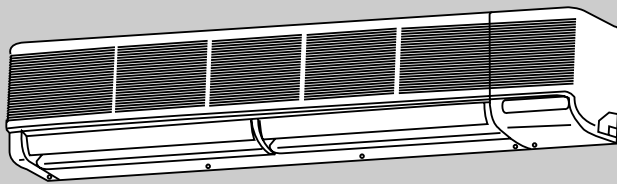
<Indoor unit>
[Model names]

PKFY-P63VFM-A

PKFY-P100VFM-A

[Service Ref.]

PKFY-P63VFM-A
PKFY-P63VFM-A₁
PKFY-P63VFM-A₂
PKFY-P100VFM-A
PKFY-P100VFM-A₁
PKFY-P100VFM-A₂



Indoor unit

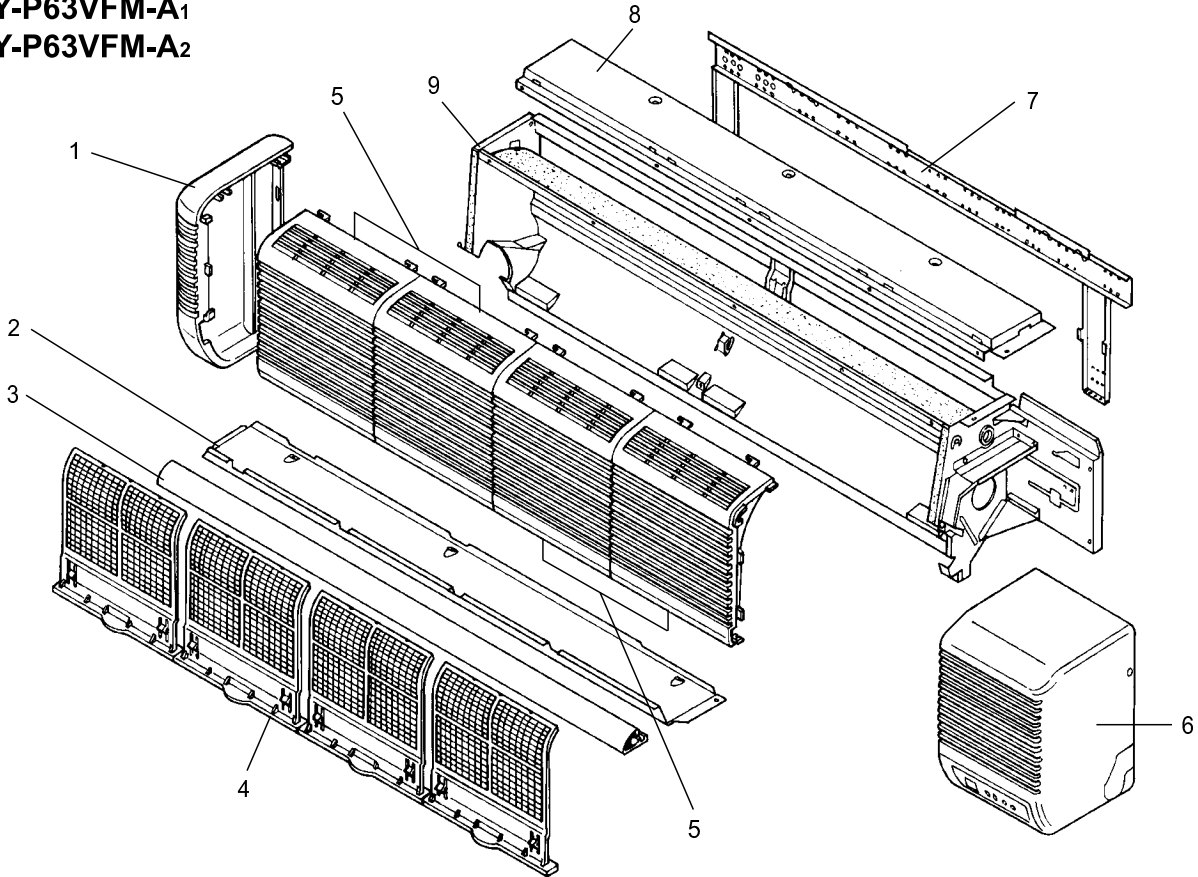
- PKFY-P63VFM-A₁, PKFY-P100VFM-A₁, PKFY-P63VFM-A₂ and PKFY-P100VFM-A₂ are added in REVISED EDITION-A.
- Please void OC251,OC270.

CONTENTS

1. TECHNICAL CHANGES	2
2. SAFETY PRECAUTION	3
3. PART NAMES AND FUNCTIONS	5
4. SPECIFICATIONS	7
5. OUTLINES AND DIMENSIONS	9
6. WIRING DIAGRAM	11
7. REFRIGERANT SYSTEM DIAGRAM	13
8. TROUBLE SHOOTING	14
9. DISASSEMBLY PROCEDURE	19
10. PARTS LIST	22
11. OPTIONAL PARTS	Back Cover

STRUCTURAL PARTS

PKFY-P63VFM-A
 PKFY-P63VFM-A₁
 PKFY-P63VFM-A₂



Part number that is circled is not shown in the figure.

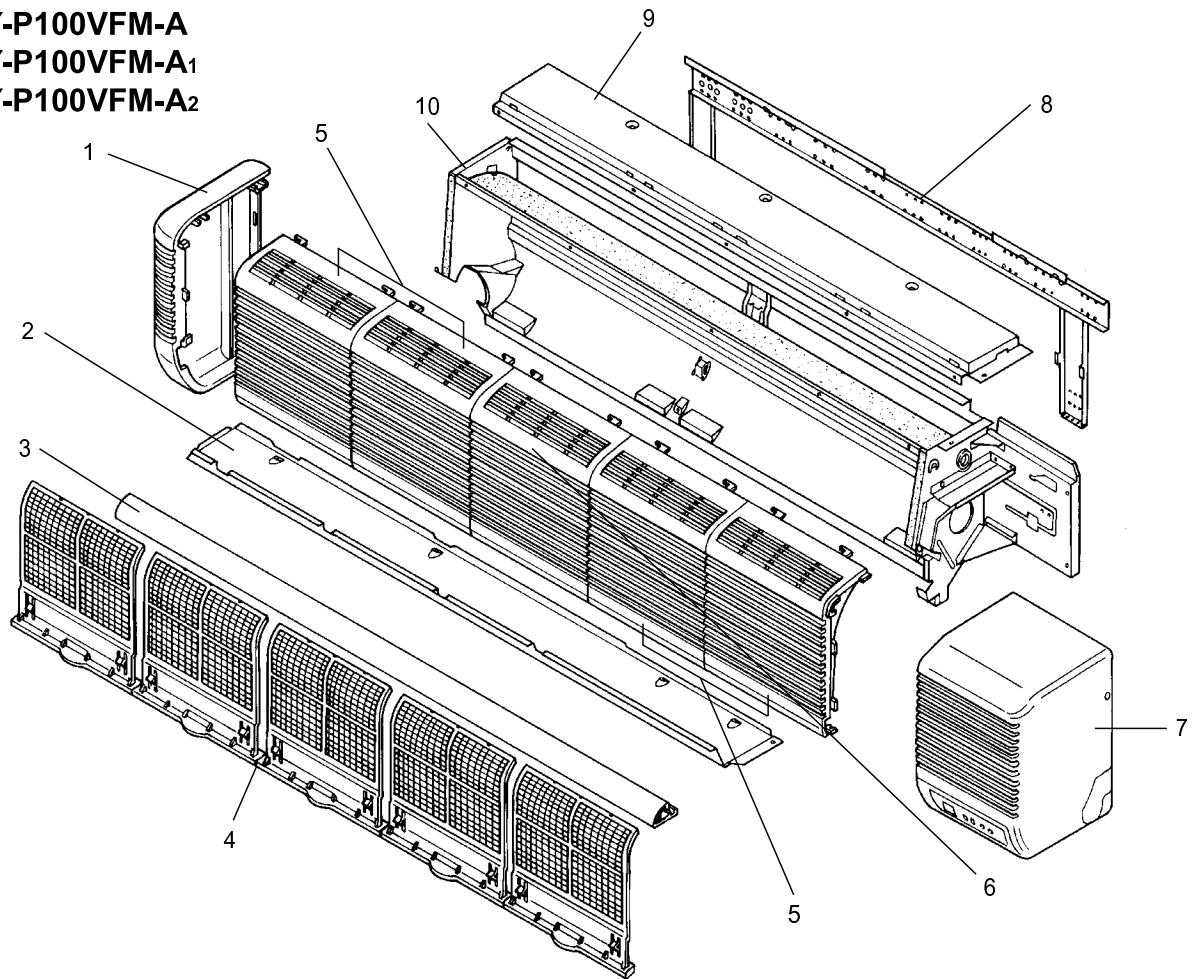
No.	Part No.	Part Name	Specification	Q'ty / set			Remarks (Drawing No.)	Wiring Diagram Symbol	Recom- mended Q'ty	Price	
				PKFY-P63						Unit	Amount
				VFM-A	VFM-A ₁	VFM-A ₂					
1	R01 12G 662	LEFT SIDE PANEL		1	1	1					
2	R01 E01 812	UNDER PLATE		1	1	1					
3	R01 12G 811	NOSE		1							
	R01 E00 811	NOSE			1	1					
4	R01 A17 500	AIR FILTER		4	4	4					
5	R01 12G 691	INTAKE GRILLE		2	2	2					
6	R01 12G 661	RIGHT SIDE PANEL		1	1	1					
7	R01 12G 808	BACK PLATE		1	1	1					
8	R01 E01 641	TOP PLATE		1	1	1					
9	—	BOX ASSEMBLY		1			(BG00A593GN1)				
	—	BOX ASSEMBLY			1		(RG00A734G37)				
	—	BOX ASSEMBLY				1	(RG00A734GG3)				
⑩	R01 12G 523	DRAIN SOCKET		1	1	1					

STRUCTURAL PARTS

PKFY-P100VFM-A

PKFY-P100VFM-A₁

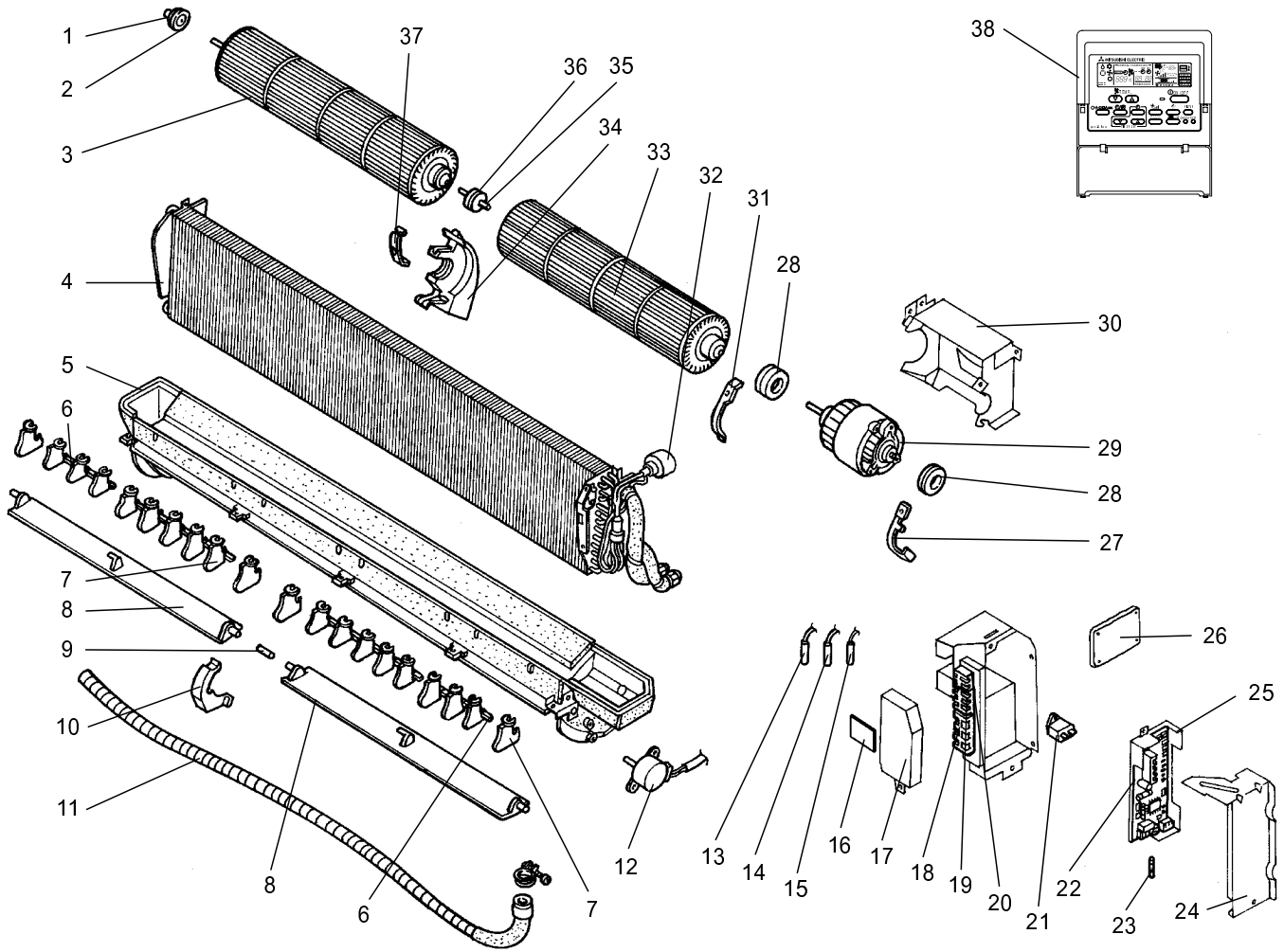
PKFY-P100VFM-A₂



Part number that is circled is not shown in the figure.

No.	Part No.	Part Name	Specification	Q'ty / set			Remarks (Drawing No.)	Wiring Diagram Symbol	Recom- mended Q'ty	Price	
				PKFY-P100						Unit	Amount
				VFM-A	VFM-A ₁	VFM-A ₂					
1	R01 12G 662	LEFT SIDE PANEL		1	1	1					
2	R01 E00 812	UNDER PLATE		1	1	1					
3	R01 16G 811	NOSE		1							
	R01 E01 811	NOSE			1	1					
4	R01 A17 500	AIR FILTER		5	5	5					
5	R01 12G 691	INTAKE GRILLE		2	2	2					
6	R01 16G 692	INTAKE GRILLE		1	1	1					
7	R01 12G 661	RIGHT SIDE PANEL		1	1	1					
8	R01 16G 808	BACK PLATE		1	1	1					
9	R01 E00 641	TOP PLATE		1	1	1					
10	—	BOX ASSEMBLY		1			(BG00A593GN2)				
	—	BOX ASSEMBLY			1		(RG00A734G38)				
	—	BOX ASSEMBLY				1	(RG00A734GG4)				
⑪	R01 12G 523	DRAIN SOCKET		1	1	1					

ELECTRICAL PARTS
PKFY-P63VFM-A
PKFY-P63VFM-A₁
PKFY-P63VFM-A₂

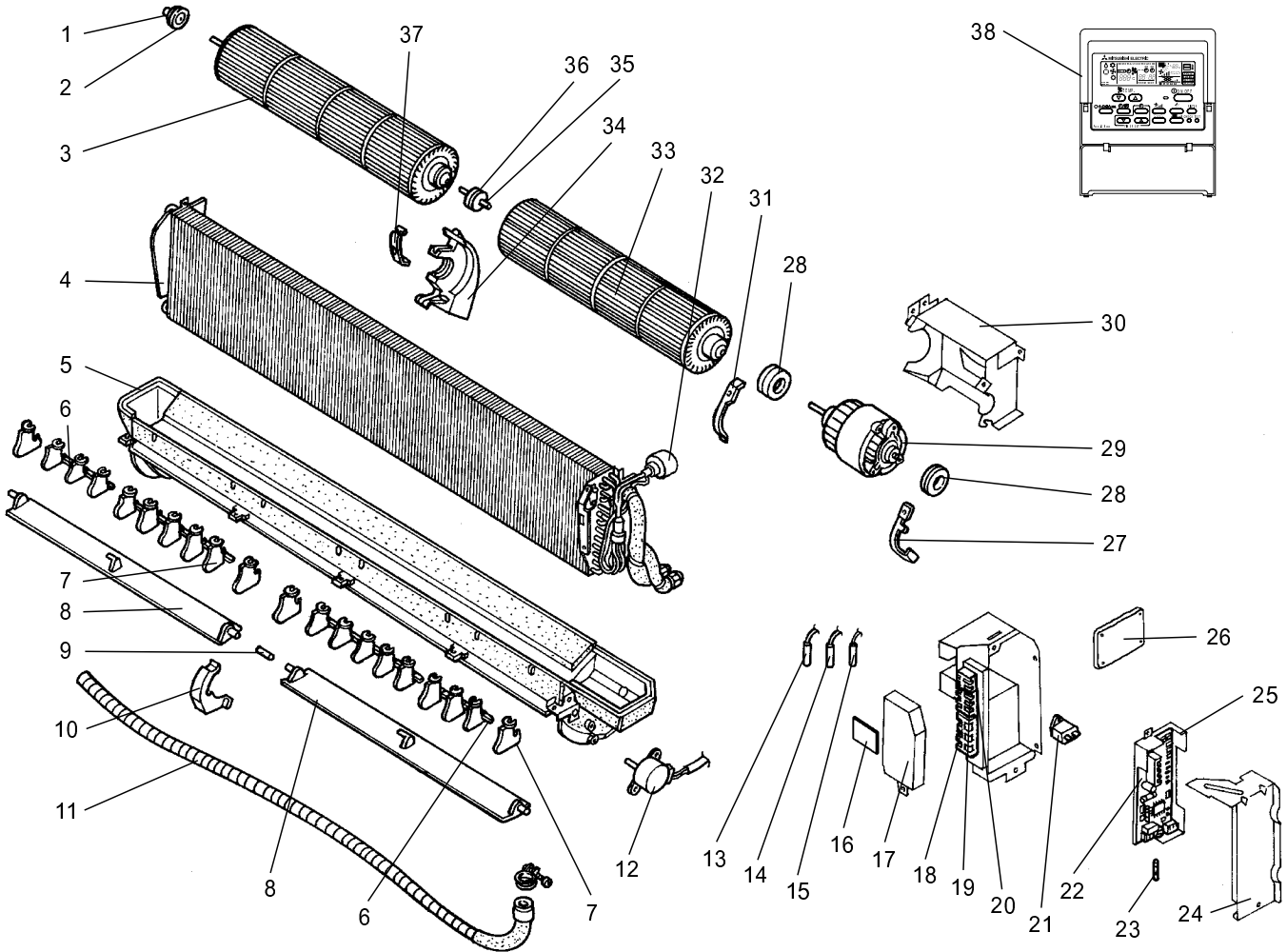


No.	Part No.	Part Name	Specification	Q'ty / set			Remarks (Drawing No.)	Wiring Diagram Symbol	Recom- mended Q'ty	Price	
				PKFY-P63						Unit	Amount
				VFM-A	VFM-A ₁	VFM-A ₂					
1	R01 Z61 102	BEARING MOUNT		1	1	1					
2	R01 005 103	SLEEVE BEARING		1	1	1					
3	R01 13G 114	LEFT LINEFLOW FAN		1	1	1					
4	T7W E81 480	HEAT EXCHANGER		1	1	1					
5	T7W E10 529	DRAIN PAN		1							
	T7W E13 529	DRAIN PAN			1	1					
6	—	ARM		3	3	3	(BG25H301H02)				
7	—	GUIDE VANE		16	16	16	(BG25J821H01)				
	—	GUIDE VANE (WITH HANDELE)		4	4	4	(BG25J821H02)				
8	R01 12G 002	AUTO VANE		2	2	2					
9	R01 12G 063	JOINT SHAFT		1	1	1					
10	R01 12G 621	CENTER COVER		1	1	1					
11	R01 KV5 527	DRAIN HOSE		1	1	1					

Part number that is circled is not shown in the figure.

No.	Part No.	Part Name	Specification	Q'ty / set			Remarks (Drawing No.)	Wiring Diagram Symbol	Recom- mended Q'ty	Price	
				PKFY-P63						Unit	Amount
				VFM-A	VFM-A ₁	VFM-A ₂					
12	T7W E03 223	VANE MOTOR		1	1	1		MV			
13	R01 E32 202	GAS PIPE THERMISTOR		1	1	1		TH23			
14	T7W E12 202	ROOM TEMPERATURE THERMISTOR		1	1	1		TH21			
15	R01 E02 202	LIQUID PIPE THERMISTOR		1	1	1		TH22			
16	T7W B01 294	ADDRESS BOARD		1	1	1		A.B			
17	—	TERMINAL COVER		1	1	1	(BG02J608G01)				
18	T7W A14 716	TERMINAL BLOCK	3P(L,N,⊕)	1	1	1		TB2			
19	T7W E00 716	TERMINAL BLOCK	3P(M1,M2,S)	1	1	1		TB5			
20	T7W 512 716	TERMINAL BLOCK	2P(1,2)	1	1	1		TB15			
21	R01 588 255	FAN MOTOR CAPACITOR	2.0 μ F 440V	1	1	1		C1			
22	T7W E22 310	INDOOR CONTROLLER BOARD		1	1	1		I.B			
23	T7W 520 239	FUSE	250V 6.3A	2	2	2		FUSE			
24	—	CONTROLLER COVER		1	1	1	(BG02A648G02)				
25	—	CONTROLLER CASE		1	1	1	(BG25J080H02)				
26	R01 E02 313	POWER BOARD		1	1	1		P.B			
27	—	MOTOR BAND		1	1	1	(BG02H065H01)				
28	R01 12G 105	RUBBER MOUNT		2	2	2					
29	R01 12G 220	FAN MOTOR	D094P40MS	1	1	1		MF			
30	—	MOTOR LEG		1	1	1	(BG02A534H16)				
31	—	MOTOR BAND		1	1	1	(BG02H178H01)				
32	R01 E27 401	LINEAR EXPANSION VALVE		1	1	1		LEV			
33	R01 13G 115	RIGHT LINE FLOW FAN		1	1	1					
34	—	CENTER SUPPORT		1	1	1	(BG00R259G08)				
35	R01 12G 103	SLEEVE BEARING		1	1	1					
36	R01 KV5 102	BEARING MOUNT		1	1	1					
37	—	BEARING BAND		1	1	1	(BG02L462H02)				
38	—	REMOTE CONTROLLER	PAR-20MAA	1	1	1		R.B			
③9	R01 05A 304	ADDRESS CABLE		1	1	1					

ELECTRICAL PARTS
PKFY-P100VFM-A
PKFY-P100VFM-A₁
PKFY-P100VFM-A₂



No.	Part No.	Part Name	Specification	Q'ty / set			Remarks (Drawing No.)	Wiring Diagram Symbol	Recom- mended Q'ty	Price	
				PKFY-P100						Unit	Amount
				VFM-A	VFM-A ₁	VFM-A ₂					
1	R01 Z61 102	BEARING MOUNT		1	1	1					
2	R01 005 103	SLEEVE BEARING		1	1	1					
3	R01 17G 114	LEFT LINEFLOW FAN		1	1	1					
4	T7W E82 480	HEAT EXCHANGER		1	1	1					
5	T7W E11 529	DRAIN PAN		1							
	T7W E14 529	DRAIN PAN			1	1					
6	—	ARM		4	4	4	(BG25H301H02)				
7	—	GUIDE VANE		22	22	22	(BG25J821H01)				
	—	GUIDE VANE (WITH HANDELE)		4	4	4	(BG25J821H02)				
8	R01 16G 002	AUTO VANE		2	2	2					
9	R01 12G 063	JOINT SHAFT		1	1	1					
10	R01 12G 621	CENTER COVER		1	1	1					
11	R01 KV5 527	DRAIN HOSE		1	1	1					

Part number that is circled is not shown in the figure.

No.	Part No.	Part Name	Specification	Q'ty / set			Remarks (Drawing No.)	Wiring Diagram Symbol	Recom- mended Q'ty	Price	
				PKFY-P100						Unit	Amount
				VFM-A	VFM-A ₁	VFM-A ₂					
12	T7W E03 223	VANE MOTOR		1	1	1		MV			
13	R01 E32 202	GAS PIPE THERMISTOR		1	1	1		TH23			
14	T7W E12 202	ROOM TEMPERATURE THERMISTOR		1	1	1		TH21			
15	R01 E02 202	LIQUID PIPE THERMISTOR		1	1	1		TH22			
16	T7W B01 294	ADDRESS BOARD		1	1	1		A.B			
17	—	TERMINAL COVER		1	1	1	(BG02J608G01)				
18	T7W A14 716	TERMINAL BLOCK	3P(L,N,⊕)	1	1	1		TB2			
19	T7W E00 716	TERMINAL BLOCK	3P(M1,M2,S)	1	1	1		TB5			
20	T7W 512 716	TERMINAL BLOCK	2P(1,2)	1	1	1		TB15			
21	R01 576 255	FAN MOTOR CAPACITOR	3.0 μ F 440V	1	1	1		C1			
22	T7W E22 310	INDOOR CONTROLLER BOARD		1	1	1		I.B			
23	T7W 520 239	FUSE	250V 6.3A	2	2	2		FUSE			
24	—	CONTROLLER COVER		1	1	1	(BG02A648G02)				
25	—	CONTROLLER CASE		1	1	1	(BG25J080H02)				
26	R01 E02 313	POWER BOARD		1	1	1		P.B			
27	—	MOTOR BAND		1	1	1	(BG02H065H01)				
28	R01 16G 105	RUBBER MOUNT		2	2	2					
29	T7W 571 762	FAN MOTOR	D10A4P70MS	1	1	1		MF			
30	—	MOTOR LEG		1	1	1	(RG02A534H17)				
31	—	MOTOR BAND		1	1	1	(BG02H178H01)				
32	T7W E09 401	LINEAR EXPANSION VALVE		1	1	1		LEV			
33	R01 17G 115	RIGHT LINE FLOW FAN		1	1	1					
34	—	CENTER SUPPORT		1	1	1	(BG00R259G08)				
35	R01 12G 103	SLEEVE BEARING		1	1	1					
36	R01 KV5 102	BEARING MOUNT		1	1	1					
37	—	BEARING BAND		1	1	1	(BG02L462H02)				
38	—	REMOTE CONTROLLER	PAR-20MAA	1	1	1		R.B			
③9	R01 05A 304	ADDRESS CABLE		1	1	1					

DRAIN-UP MACHINE

Only

PKFY-P63VFM-A PKFY-P63VFM-A₁PKFY-P100VFM-A PKFY-P100VFM-A₁

Part No.

PAC-SE89DMA-E



HEAD OFFICE : MITSUBISHI DENKI BLDG., 2-2-3, MARUNOUCHI CHIYODU-KU, TOKYO100-8310, JAPAN