

SERVICE PARTS LIST FOR MITSUBISHI ELECTRIC PACKAGED AIR-CONDITIONERS

Series : PLFY-P.VLMD-E

REVISED

May 2009

BWE0404E

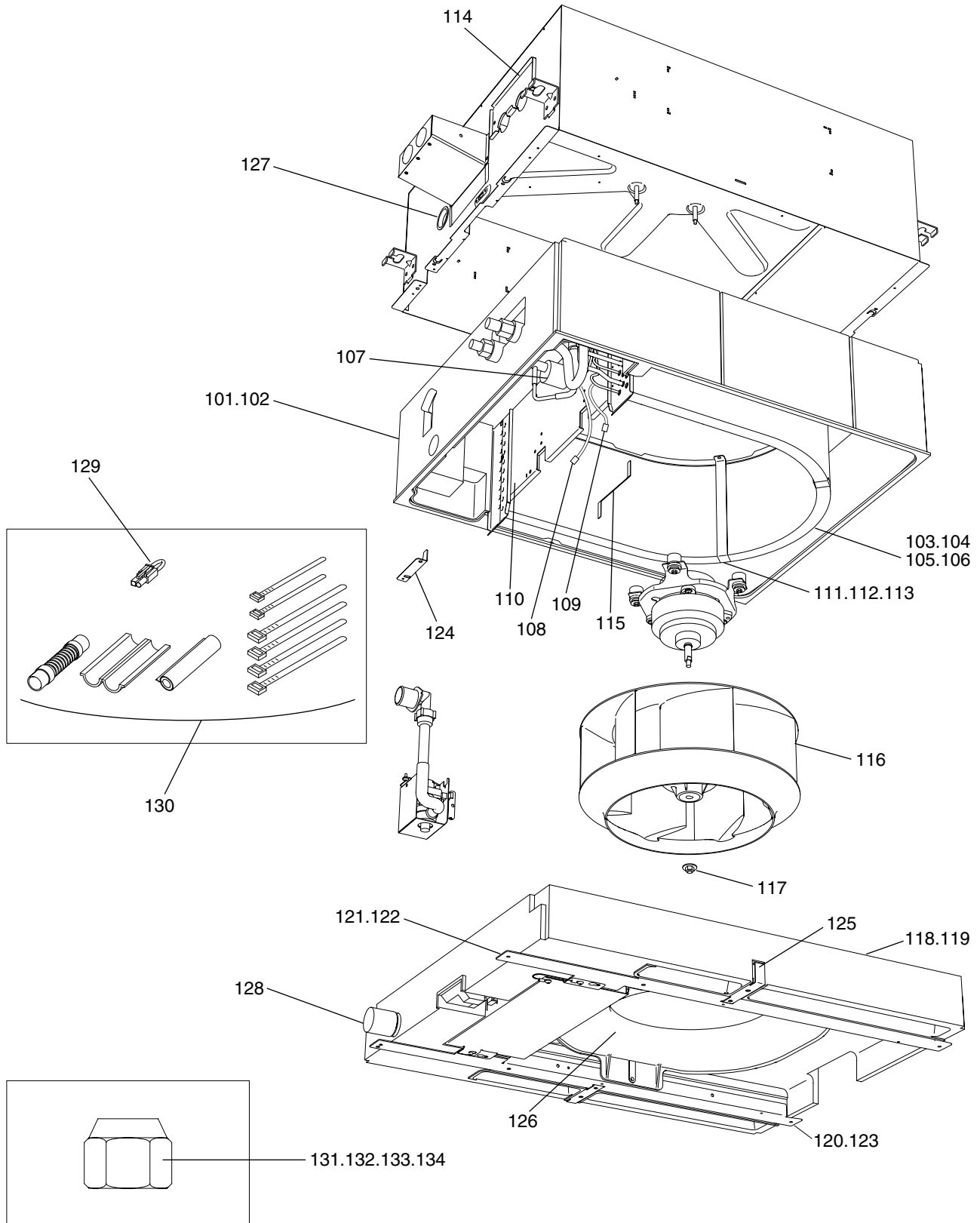
INDEX

PLFY-P20VLMD-E
PLFY-P25VLMD-E
PLFY-P32VLMD-E
PLFY-P40VLMD-E
PLFY-P50VLMD-E
PLFY-P63VLMD-E
PLFY-P80VLMD-E
PLFY-P100VLMD-E
PLFY-P125VLMD-E



PLFY-P20,P25VLMD-E
PLFY-P32,P40VLMD-E
PLFY-P50,P63VLMD-E

EXTERNAL PARTS (1)



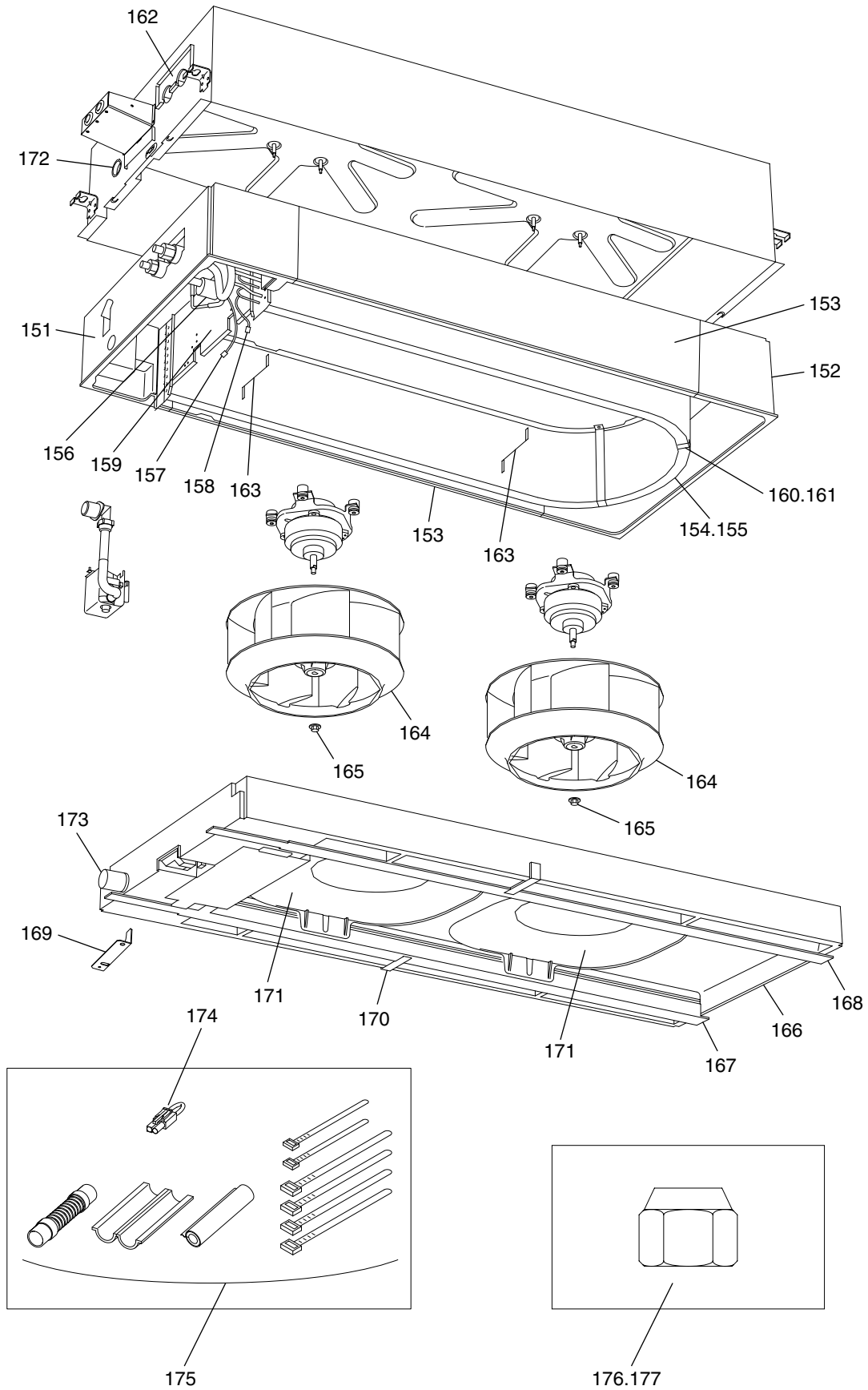
PLFY-P20,P25VLMD-E
 PLFY-P32,P40VLMD-E
 PLFY-P50,P63VLMD-E

EXTERNAL PARTS (1)

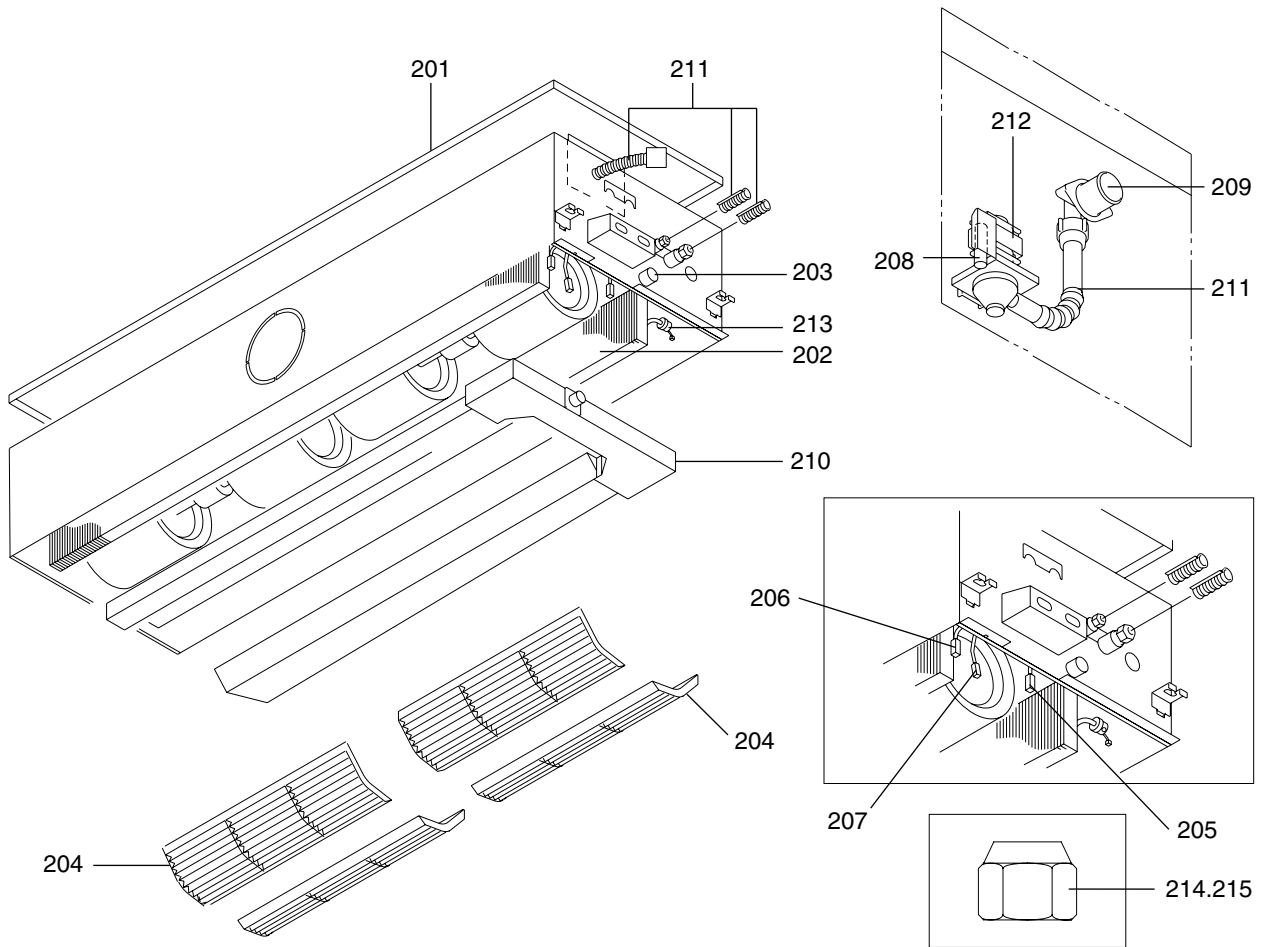
| No. | Part No. | G : RoHS Apply Only W : RoHS Apply by Running Change | | Spec. | PLFY-P20VLMD-E | PLFY-P25VLMD-E | PLFY-P32VLMD-E | PLFY-P40VLMD-E | PLFY-P50VLMD-E | PLFY-P63VLMD-E | Dwg. No. | Price | Revision History |
|-----|-------------|---|--------------------------------|---------------------|----------------|----------------|----------------|----------------|----------------|----------------|-------------|-------|------------------|
| | | | Part Name | | | | | | | | | | |
| 101 | R63 M91 111 | G | Casing | | 1 | 1 | 1 | 1 | | | W645465G05 | | |
| 102 | R63 M93 112 | G | Casing | | | | | | 1 | 1 | W645465G06 | | |
| 103 | R61 309 480 | G | Heat exchanger | | 1 | 1 | | | | | W126406G48 | | E |
| 104 | R61 310 480 | G | Heat exchanger | | | | 1 | 1 | | | W126407G81 | | E |
| 105 | R61 311 480 | G | Heat exchanger | | | | | | 1 | | W126407G82 | | E |
| 106 | R61 312 480 | G | Heat exchanger | | | | | | | 1 | W126433G24 | | E |
| 107 | R63 003 401 | G | Linear expansion valve | EFM-40YGMD-4 | 1 | 1 | 1 | 1 | 1 | 1 | P632451X01 | | |
| 108 | R63 Y03 287 | G | Thermistor | (gas) | 1 | 1 | 1 | 1 | 1 | 1 | W891304G18 | | E |
| 109 | R63 Y04 287 | G | Thermistor | (liquid) | 1 | 1 | 1 | 1 | 1 | 1 | P418060X01 | | E |
| 110 | R63 7G7 660 | G | Coil center plate | | 1 | 1 | 1 | 1 | 1 | 1 | W892109G06 | | |
| 111 | R61 M91 667 | G | Heat exchanger support plate 1 | | 2 | 2 | | | | | W890725H04 | | E |
| 112 | R61 M92 667 | G | Heat exchanger support plate 2 | | | | 2 | 2 | 2 | | W890725H05 | | E |
| 113 | R61 M94 667 | G | Heat exchanger support plate 3 | | | | | | | 2 | W890725H06 | | E |
| 114 | R63 M92 668 | G | Pipe cover | | 1 | 1 | 1 | 1 | 1 | 1 | W892112G01 | | |
| 115 | R61 M93 667 | G | Plate | | 2 | 2 | 2 | 2 | 2 | 2 | W892176H04 | | |
| 116 | R63 M91 114 | G | Turbo fan | | 1 | 1 | 1 | 1 | 1 | 1 | W646604G01 | | |
| 117 | R61 M91 122 | G | Washer nut | M8 | 1 | 1 | 1 | 1 | 1 | 1 | W897146H01 | | |
| 118 | R61 041 529 | G | Drain pan | | 1 | 1 | 1 | 1 | | | W645439G13 | | E |
| 119 | R61 042 529 | G | Drain pan | | | | | | 1 | 1 | W645439G14 | | E |
| 120 | R63 M91 669 | G | Reinforcement | | 1 | 1 | 1 | 1 | | | W894823G05 | | |
| 121 | R63 M93 669 | G | Reinforcement | | | | | | 1 | 1 | KB00B799G02 | | E |
| 122 | R63 M92 669 | G | Reinforcement | | 1 | 1 | 1 | 1 | | | W894823G06 | | |
| 123 | R63 M94 669 | G | Reinforcement | | | | | | 1 | 1 | KB00B799G01 | | E |
| 124 | R63 7G7 663 | G | Side frame plate | | 1 | 1 | 1 | 1 | 1 | 1 | W890726H02 | | |
| 125 | R63 Y16 667 | G | Plate | | 2 | 2 | 2 | 2 | 2 | 2 | W892182G05 | | |
| 126 | R61 M91 119 | G | Bell mouth | | 1 | 1 | 1 | 1 | 1 | 1 | W126449H02 | | |
| 127 | R63 M91 812 | G | Cap | | 1 | 1 | 1 | 1 | 1 | 1 | W860093G01 | | |
| 128 | R61 E96 558 | G | Rubber stopper | | 1 | 1 | 1 | 1 | 1 | 1 | P312040X01 | | |
| 129 | R63 H28 275 | G | Connector | | 1 | 1 | 1 | 1 | 1 | 1 | W860080G02 | | |
| 130 | R63 Y01 525 | G | Drain hose set | | 1 | 1 | 1 | 1 | 1 | 1 | W650735G01 | | |
| 131 | R63 7G9 122 | G | Flare nut | (gas) Ø12.7(1/2) | 1 | 1 | 1 | 1 | 1 | | BG12S008H01 | | E |
| 132 | R63 8G1 122 | G | Flare nut | (gas) Ø15.88(5/8) | | | | | | 1 | BG12S826H01 | | E |
| 133 | R63 1E3 122 | G | Flare nut | (liquid) Ø6.35(1/4) | 1 | 1 | 1 | 1 | 1 | | S551001H06 | | E |
| 134 | R63 8G0 122 | G | Flare nut | (liquid) Ø9.52(3/8) | | | | | | 1 | Z211A143H06 | | E |
| | | | | | | | | | | | | | |
| | | | | | | | | | | | | | |
| | | | | | | | | | | | | | |
| | | | | | | | | | | | | | |
| | | | | | | | | | | | | | |
| | | | | | | | | | | | | | |
| | | | | | | | | | | | | | |
| | | | | | | | | | | | | | |
| | | | | | | | | | | | | | |
| | | | | | | | | | | | | | |

PLFY-P80VLMD-E
PLFY-P100VLMD-E

EXTERNAL PARTS (2)



| No. | Part No. | G : RoHS Apply Only W : RoHS Apply by Running Change | Part Name | Spec. | PLFY-P80VLM-D-E | PLFY-P100VLM-D-E | | | | | Dwg. No. | Price | Revision History |
|-----|-------------|---|------------------------------|---------------------|-----------------|------------------|--|--|--|--|-------------|-------|------------------|
| | | | | | | | | | | | | | |
| 152 | R63 P99 111 | G | Casing | | 1 | 1 | | | | | W899297G01 | | |
| 153 | R63 Y24 111 | G | Casing | | 2 | 2 | | | | | W899298G02 | | |
| 154 | R63 054 480 | G | Heat exchanger | | 1 | | | | | | W126499G30 | | E |
| 155 | R63 056 480 | G | Heat exchanger | | | 1 | | | | | W127400G15 | | E |
| 156 | R63 004 401 | G | Linear expansion valve | EFM-80YGMD-4 | 1 | 1 | | | | | P632453X01 | | |
| 157 | R63 001 287 | G | Thermistor | (gas) | 1 | 1 | | | | | W891304G17 | | E |
| 158 | R63 Y04 287 | G | Thermistor | (liquid) | 1 | 1 | | | | | P418060X01 | | E |
| 159 | R63 7G7 660 | G | Coil center plate assy | | 1 | 1 | | | | | W892109G06 | | |
| 160 | R61 M92 667 | G | Heat exchanger support plate | 2 rows | 4 | | | | | | W890725H05 | | E |
| 161 | R61 M94 667 | G | Heat exchanger support plate | 3 rows | | 4 | | | | | W890725H06 | | E |
| 162 | R63 M92 668 | G | Pipe cover | | 1 | 1 | | | | | W892112G01 | | |
| 163 | R61 M93 667 | G | Plate | | 4 | 4 | | | | | W892176H04 | | |
| 164 | R63 M91 114 | G | Turbo fan | | 2 | 2 | | | | | W646604G01 | | |
| 165 | R61 M91 122 | G | Washer nut | M8 | 2 | 2 | | | | | W897146H01 | | |
| 166 | R63 P99 529 | G | Drain pan | | 1 | 1 | | | | | W273526G04 | | E |
| 167 | R63 Y01 669 | G | Reinforcement | | 1 | 1 | | | | | KB00B800G01 | | E |
| 168 | R61 002 669 | G | Reinforcement | | 1 | 1 | | | | | KB00B800G02 | | E |
| 169 | R63 7G7 663 | G | Side frame plate | | 1 | 1 | | | | | W890726H02 | | |
| 170 | R63 Y16 667 | G | Plate | | 2 | 2 | | | | | W892182G05 | | |
| 171 | R61 M91 119 | G | Bell mouth | | 2 | 2 | | | | | W126449H02 | | |
| 172 | R63 M91 812 | G | Cap | | 1 | 1 | | | | | W860093G01 | | |
| 173 | R61 E96 558 | G | Rubber plug | | 1 | 1 | | | | | P312040X01 | | |
| 174 | R63 H28 275 | G | Connector | | 1 | 1 | | | | | W860080G02 | | |
| 175 | R63 Y01 525 | G | Drain hose set | | 1 | 1 | | | | | W650735G01 | | |
| 176 | R63 8G1 122 | G | Flare nut | (gas) Ø15.88(5/8) | 1 | 1 | | | | | BG12S826H01 | | E |
| 177 | R63 8G0 122 | G | Flare nut | (liquid) Ø9.52(3/8) | 1 | 1 | | | | | Z211A143H06 | | E |
| | | | | | | | | | | | | | |
| | | | | | | | | | | | | | |
| | | | | | | | | | | | | | |
| | | | | | | | | | | | | | |
| | | | | | | | | | | | | | |
| | | | | | | | | | | | | | |
| | | | | | | | | | | | | | |
| | | | | | | | | | | | | | |
| | | | | | | | | | | | | | |
| | | | | | | | | | | | | | |
| | | | | | | | | | | | | | |
| | | | | | | | | | | | | | |
| | | | | | | | | | | | | | |
| | | | | | | | | | | | | | |
| | | | | | | | | | | | | | |
| | | | | | | | | | | | | | |
| | | | | | | | | | | | | | |
| | | | | | | | | | | | | | |

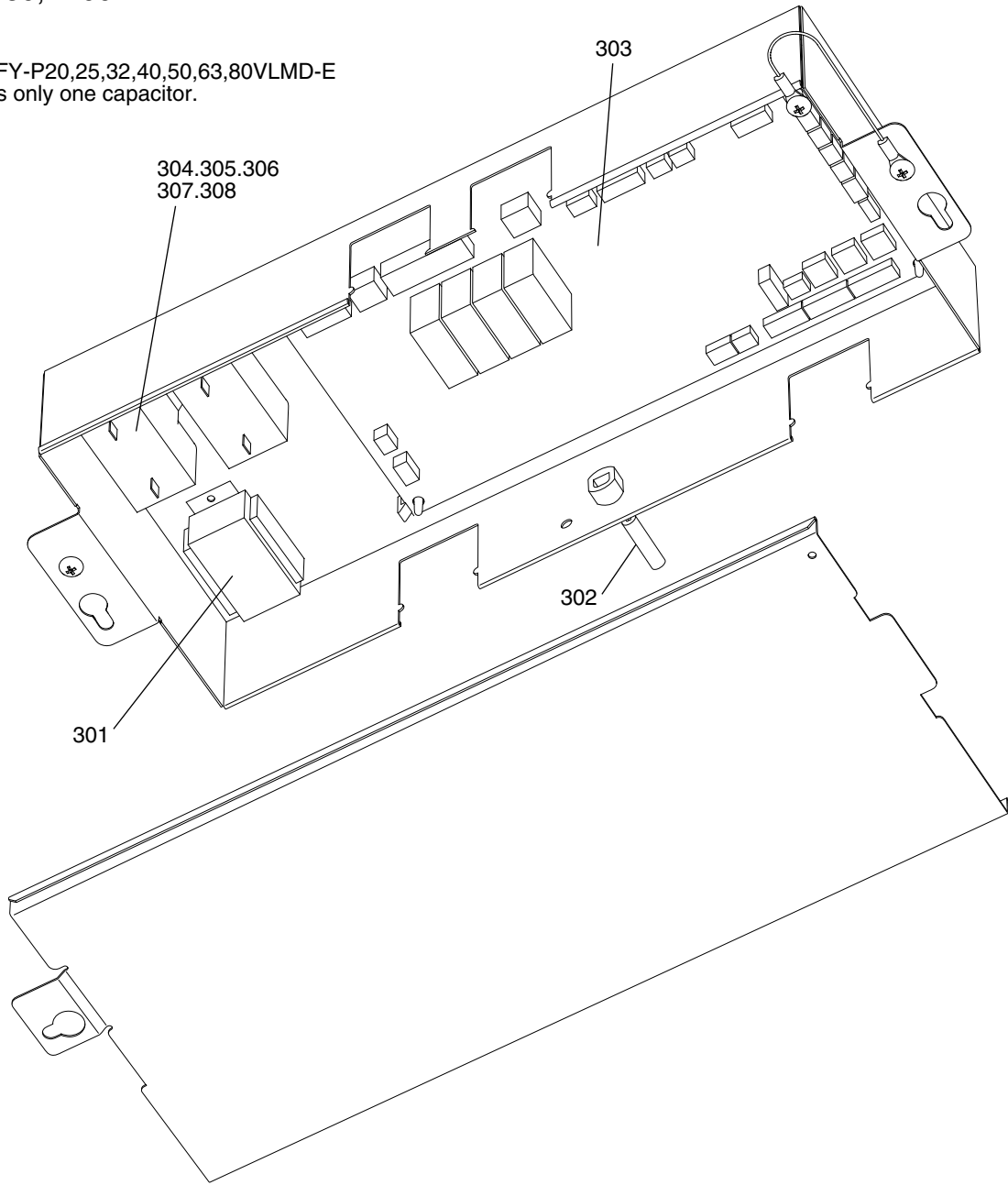


| No. | Part No. | G : RoHS Apply Only W : RoHS Apply by Running Change | | Spec. | PLFY-P125VLMD-E | | | | | Dwg. No. | Price | Revision History |
|-----|-------------|---|------------------------|---------------------|-----------------|--|--|--|--|-------------|-------|------------------|
| | | | Part Name | | | | | | | | | |
| 201 | R63 E96 641 | G | Top panel | | 1 | | | | | W625343G01 | | |
| 202 | R61 313 480 | G | Heat exchanger | | 1 | | | | | W125139G23 | | E |
| 203 | R61 E96 558 | G | Rubber stopper | | 1 | | | | | P312040X01 | | |
| 204 | R63 E96 500 | G | Air filter | | 4 | | | | | P717990X01 | | |
| 205 | R63 E38 287 | G | Thermistor | (gas) | 1 | | | | | W860042G02 | | |
| 206 | R61 096 200 | G | Thermistor | (liquid) | 1 | | | | | W860042G07 | | E |
| 207 | R61 097 200 | G | Thermistor | (inlet) | 1 | | | | | W860042G08 | | E |
| 208 | R63 H86 289 | G | Drain sensor | | 1 | | | | | W861228G02 | | |
| 209 | R61 A75 218 | G | Socket | | 1 | | | | | W621301H01 | | |
| 210 | R63 E96 529 | G | Drain pan | | 1 | | | | | W622592G31 | | E |
| 211 | R63 Y01 525 | G | Drain hose set | | 1 | | | | | W650735G01 | | |
| 212 | R63 Y04 539 | G | Drain pump LVD | PJV-1058 | 1 | | | | | P722079X01 | | |
| 213 | R63 005 401 | G | Linear expansion valve | EFM-80YGMD-3 | 1 | | | | | P632452X01 | | |
| 214 | R63 8G1 122 | G | Flare nut | (gas) Ø15.88(5/8) | 1 | | | | | BG12S826H01 | | E |
| 215 | R63 8G0 122 | G | Flare nut | (liquid) Ø9.52(3/8) | 1 | | | | | Z211A143H06 | | E |
| | | | | | | | | | | | | |
| | | | | | | | | | | | | |
| | | | | | | | | | | | | |
| | | | | | | | | | | | | |

PLFY-P20,P25VLMD-E
 PLFY-P32,P40VLMD-E
 PLFY-P50,P63VLMD-E
 PLFY-P80,P100VLMD-E

CONTROL BOX PARTS (1)

*PLFY-P20,25,32,40,50,63,80VLMD-E
 has only one capacitor.

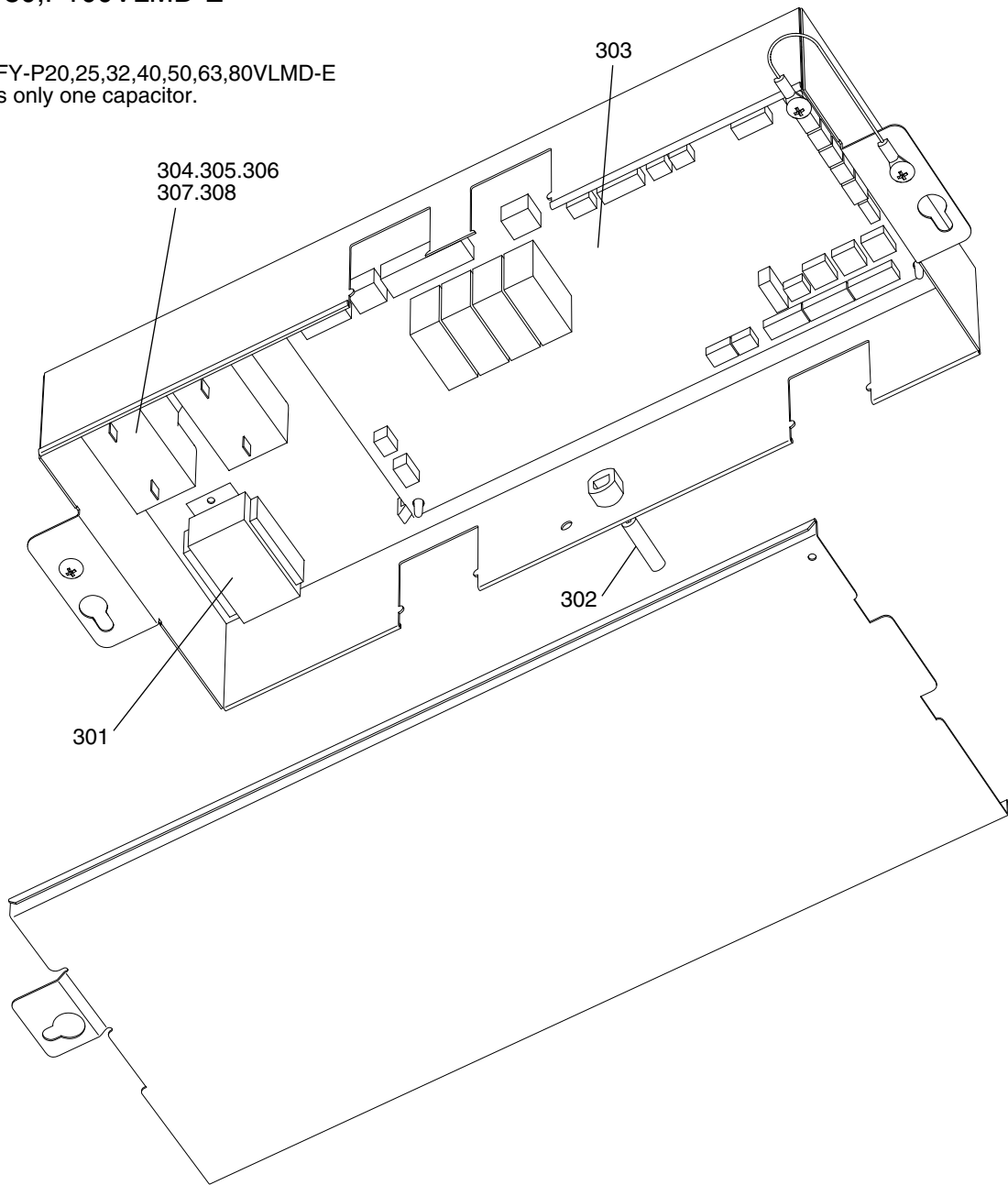


| No. | Part No. | G : RoHS Apply Only W : RoHS Apply by Running Change | | Spec. | PLFY-P20VLMD-E | PLFY-P25VLMD-E | PLFY-P32VLMD-E | PLFY-P40VLMD-E | PLFY-P50VLMD-E | PLFY-P63VLMD-E | Dwg. No. | Price | Revision History |
|-----|-------------|---|------------------|---------------------|----------------|----------------|----------------|----------------|----------------|----------------|------------|-------|------------------|
| | | | Part Name | | | | | | | | | | |
| 301 | R61 004 260 | G | Transformer | T 240V/23.2V-1.1AXA | 1 | 1 | 1 | 1 | 1 | 1 | P715419X01 | | |
| 302 | R63 Y01 287 | G | Thermistor | (inlet) | 1 | 1 | 1 | 1 | 1 | 1 | W891304G20 | | E |
| 303 | R63 Y34 281 | G | Controller board | | 1 | 1 | 1 | 1 | 1 | 1 | W849072G02 | | |
| 304 | R63 Y22 252 | G | Capacitor 1.3μF | 440VAC 1.3μF | 1 | 1 | 1 | | | | P412283X01 | | |
| 305 | R63 Y14 252 | G | Capacitor 1.5μF | 440VAC 1.5μF | | | | 1 | | | P412234X01 | | |
| 306 | R63 Y23 252 | G | Capacitor 1.7μF | 440VAC 1.7μF | | | | | 1 | | P412280X01 | | |
| 307 | R63 M92 252 | G | Capacitor 2.2μF | 440VAC 2.2μF | | | | | | 1 | P412282X01 | | |
| 308 | R63 Y15 252 | G | Capacitor 2.0μF | 440VAC 2.0μF | | | | | | | P412235X01 | | |
| | | | | | | | | | | | | | |
| | | | | | | | | | | | | | |

PLFY-P20,P25VLMD-E
 PLFY-P32,P40VLMD-E
 PLFY-P50,P63VLMD-E
 PLFY-P80,P100VLMD-E

CONTROL BOX PARTS (1)

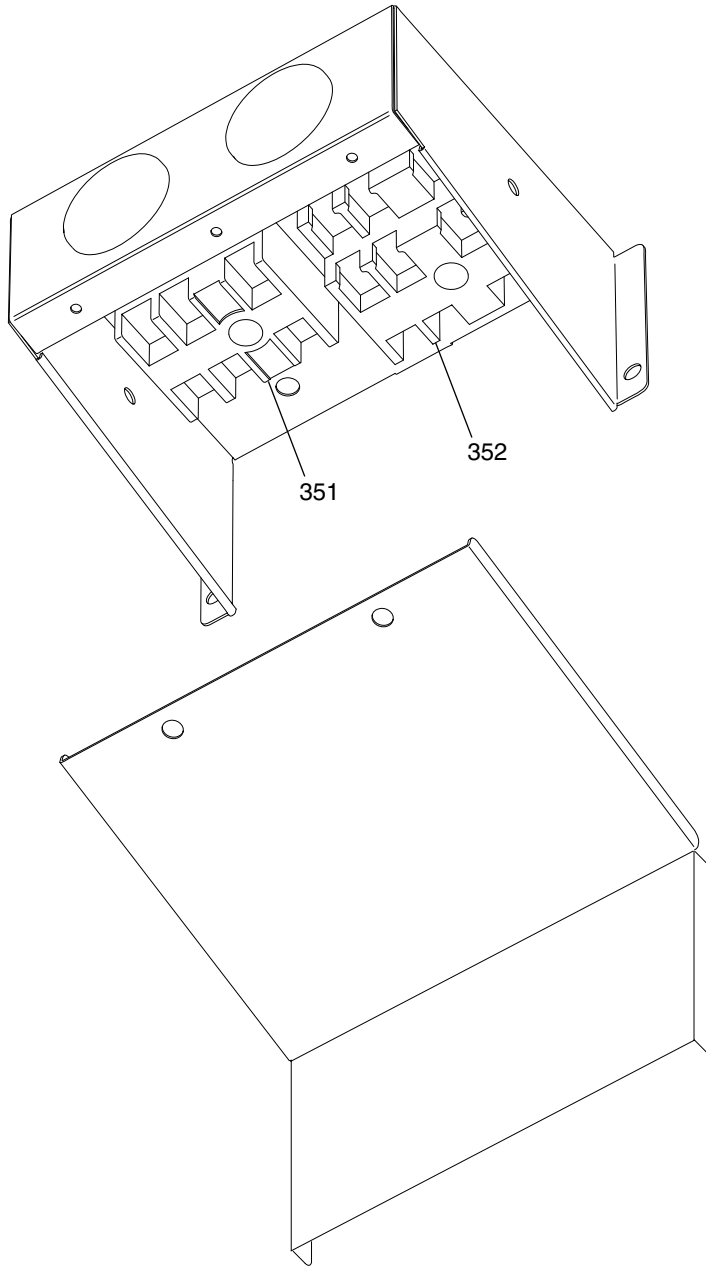
*PLFY-P20,25,32,40,50,63,80VLMD-E
 has only one capacitor.



| No. | Part No. | G : RoHS Apply Only W : RoHS Apply by Running Change | | Spec. | PLFY-P80VLMD-E | PLFY-P100VLMD-E | | | Dwg. No. | Price | Revision History |
|-----|-------------|---|------------------|---------------------|----------------|-----------------|--|--|------------|-------|------------------|
| | | | Part Name | | | | | | | | |
| 301 | R61 004 260 | G | Transformer | T 240V/23.2V-1.1AXA | 1 | 1 | | | P715419X01 | | |
| 302 | R63 Y01 287 | G | Thermistor | (inlet) | 1 | 1 | | | W891304G20 | | E |
| 303 | R63 Y34 281 | G | Controller board | | 1 | 1 | | | W849072G02 | | |
| 304 | R63 Y22 252 | G | Capacitor 1.3μF | 440VAC 1.3μF | | | | | P412283X01 | | |
| 305 | R63 Y14 252 | G | Capacitor 1.5μF | 440VAC 1.5μF | 2 | | | | P412234X01 | | |
| 306 | R63 Y23 252 | G | Capacitor 1.7μF | 440VAC 1.7μF | | | | | P412280X01 | | |
| 307 | R63 M92 252 | G | Capacitor 2.2μF | 440VAC 2.2μF | | | | | P412282X01 | | |
| 308 | R63 Y15 252 | G | Capacitor 2.0μF | 440VAC 2.0μF | | 2 | | | P412235X01 | | |
| | | | | | | | | | | | |
| | | | | | | | | | | | |

PLFY-P20,P25VLMD-E
 PLFY-P32,P40VLMD-E
 PLFY-P50,P63VLMD-E
 PLFY-P80,P100VLMD-E

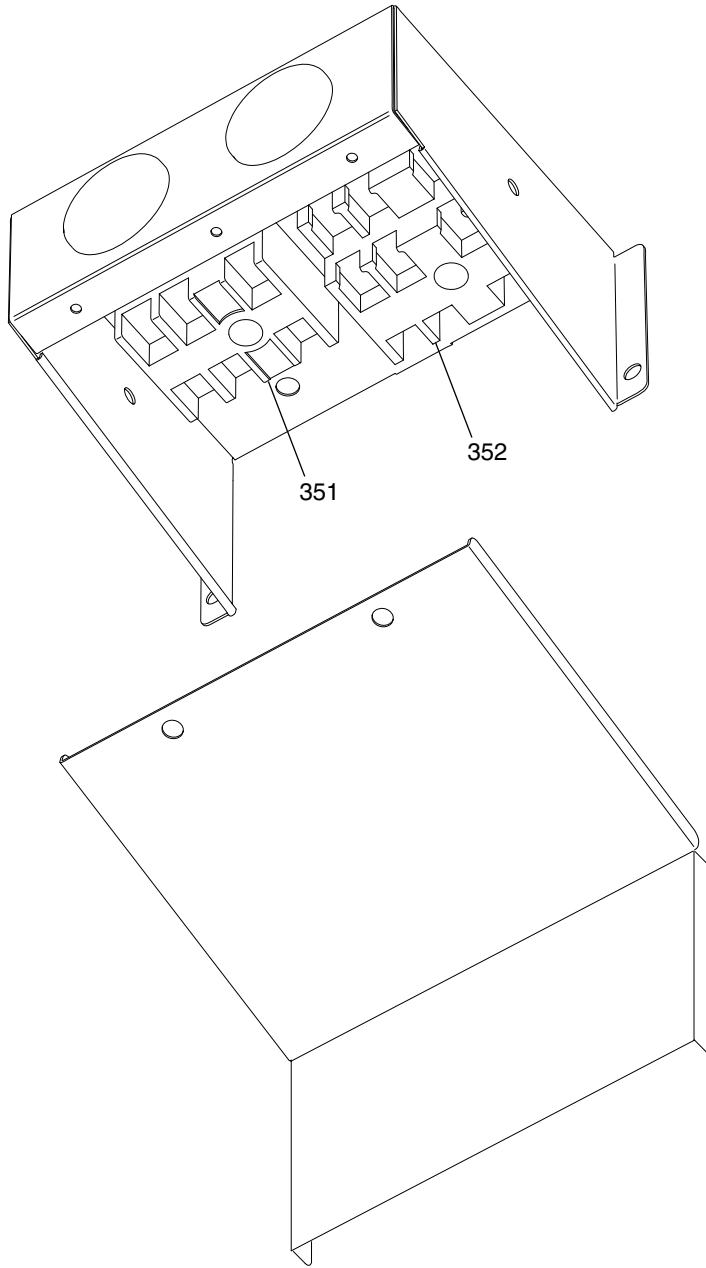
CONTROL BOX PARTS (2)



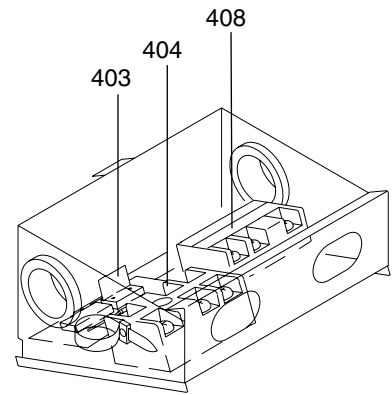
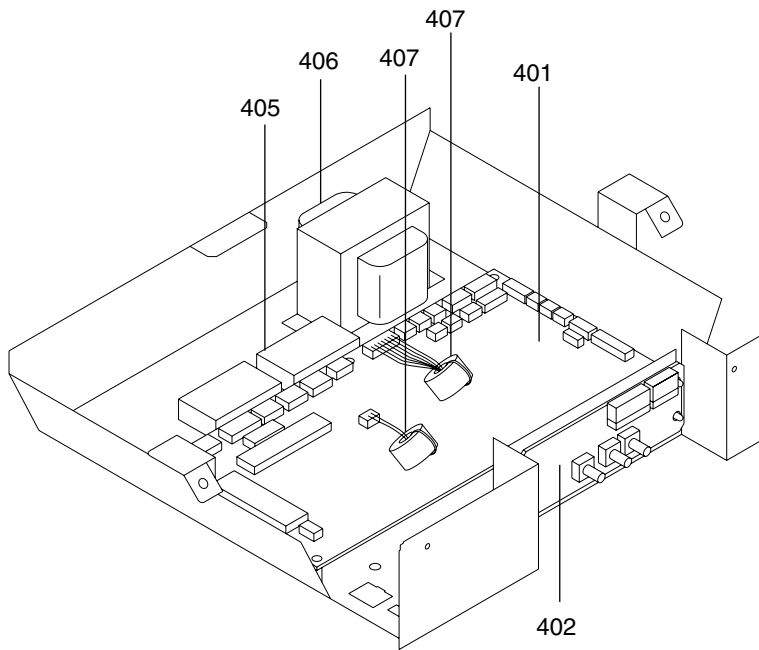
| No. | Part No. | G : RoHS Apply Only W : RoHS Apply by Running Change | | Spec. | PLFY-P20VLMD-E | PLFY-P25VLMD-E | PLFY-P32VLMD-E | PLFY-P40VLMD-E | PLFY-P50VLMD-E | PLFY-P63VLMD-E | Dwg. No. | Price | Revision History |
|-----|-------------|---|----------------|-------|----------------|----------------|----------------|----------------|----------------|----------------|------------|-------|------------------|
| | | | Part Name | | | | | | | | | | |
| 351 | R63 Y08 715 | G | Terminal block | | 1 | 1 | 1 | 1 | 1 | 1 | P436239X01 | | E |
| 352 | R63 336 246 | G | Terminal block | | 1 | 1 | 1 | 1 | 1 | 1 | P436114X03 | | |
| | | | | | | | | | | | | | |
| | | | | | | | | | | | | | |
| | | | | | | | | | | | | | |
| | | | | | | | | | | | | | |
| | | | | | | | | | | | | | |
| | | | | | | | | | | | | | |
| | | | | | | | | | | | | | |

PLFY-P20,P25VLMD-E
 PLFY-P32,P40VLMD-E
 PLFY-P50,P63VLMD-E
 PLFY-P80,P100VLMD-E

CONTROL BOX PARTS (2)



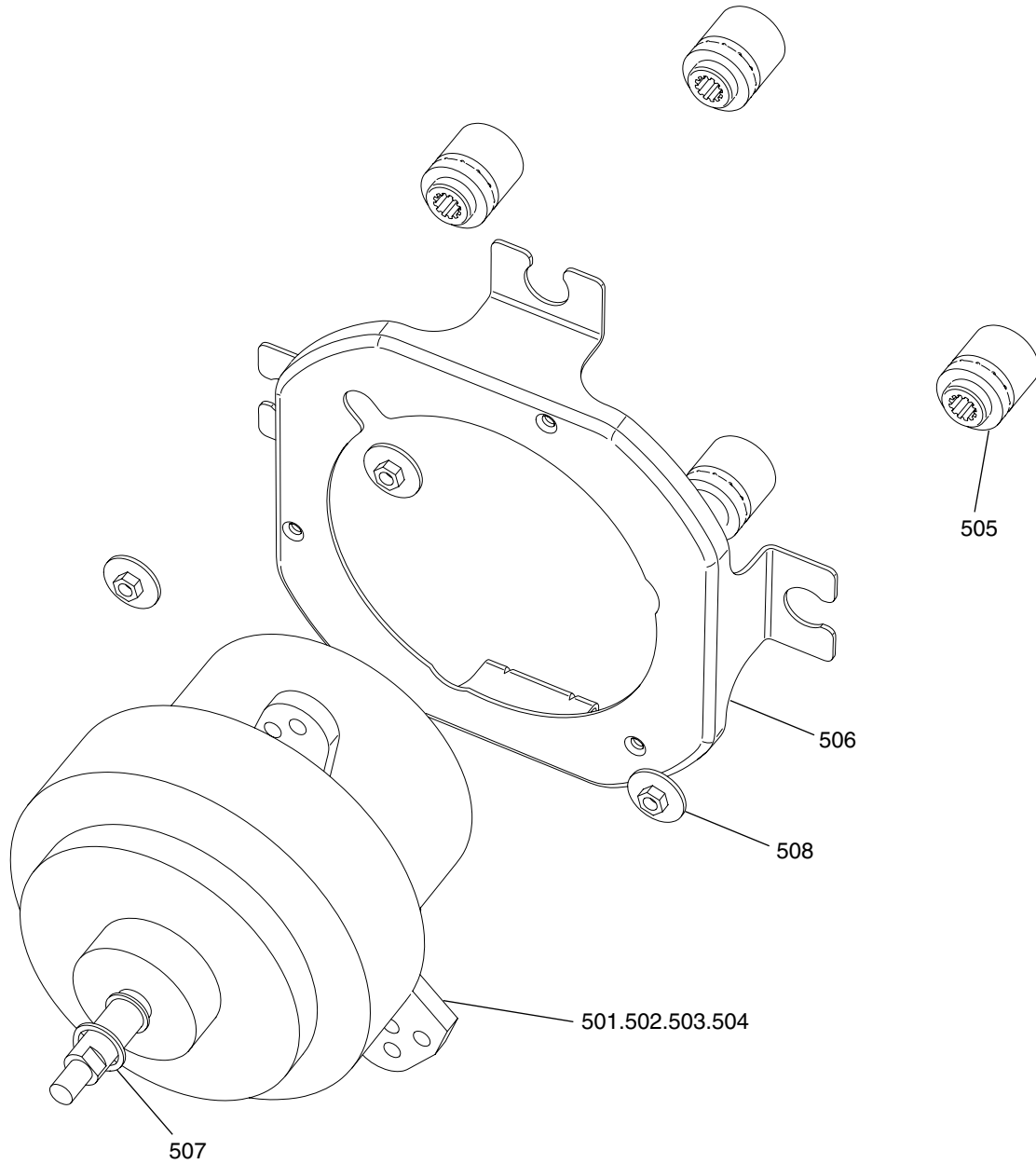
| No. | Part No. | G : RoHS Apply Only W : RoHS Apply by Running Change | | Spec. | PLFY-P80VLMD-E | PLFY-P100VLMD-E | | | | | Dwg. No. | Price | Revision History |
|-----|-------------|---|----------------|-------|----------------|-----------------|--|--|--|--|------------|-------|------------------|
| | | | Part Name | | | | | | | | | | |
| 351 | R63 Y08 715 | G | Terminal block | | 1 | 1 | | | | | P436239X01 | | E |
| 352 | R63 336 246 | G | Terminal block | | 1 | 1 | | | | | P436114X03 | | |
| | | | | | | | | | | | | | |
| | | | | | | | | | | | | | |
| | | | | | | | | | | | | | |
| | | | | | | | | | | | | | |
| | | | | | | | | | | | | | |
| | | | | | | | | | | | | | |



| No. | Part No. | G : RoHS Apply Only W : RoHS Apply by Running Change | | Spec. | PLFY-P125VLMD-E | | | | | Dwg. No. | Price | Revision History |
|-----|-------------|---|-----------------------|----------------------|-----------------|--|--|--|--|------------|-------|------------------|
| | | | Part Name | | | | | | | | | |
| 401 | R63 Y35 281 | G | Board assy (PC) | <I.B> | 1 | | | | | W849072G04 | | |
| 402 | R63 Y37 281 | G | Board assy (AD) | <A.B> | 1 | | | | | W849036G09 | | |
| 403 | R63 Y22 280 | G | Board assy (DSA) | <S.B> | 1 | | | | | W849072G13 | | |
| 404 | R63 Y08 715 | G | Terminal block | <TB2> | 1 | | | | | P436239X01 | | E |
| 405 | R63 F79 252 | G | Capacitor 5 | <C1,2>(440VAC,5μF) | 2 | | | | | P412214X01 | | |
| 406 | R63 007 260 | G | Transformer | <T>(240V/23.5V-0.9A) | 1 | | | | | P715414X01 | | |
| 407 | R63 Y01 015 | G | Troidal ferrite clamp | <FB1,2> | 1 | | | | | P419042X01 | | |
| 408 | R63 336 246 | G | Terminal block | <TB5>,<TB15> | 1 | | | | | P436114X03 | | |
| | | | | | | | | | | | | |
| | | | | | | | | | | | | |

PLFY-P20,P25VLMD-E
 PLFY-P32,P40VLMD-E
 PLFY-P50,P63VLMD-E
 PLFY-P80,P100VLMD-E

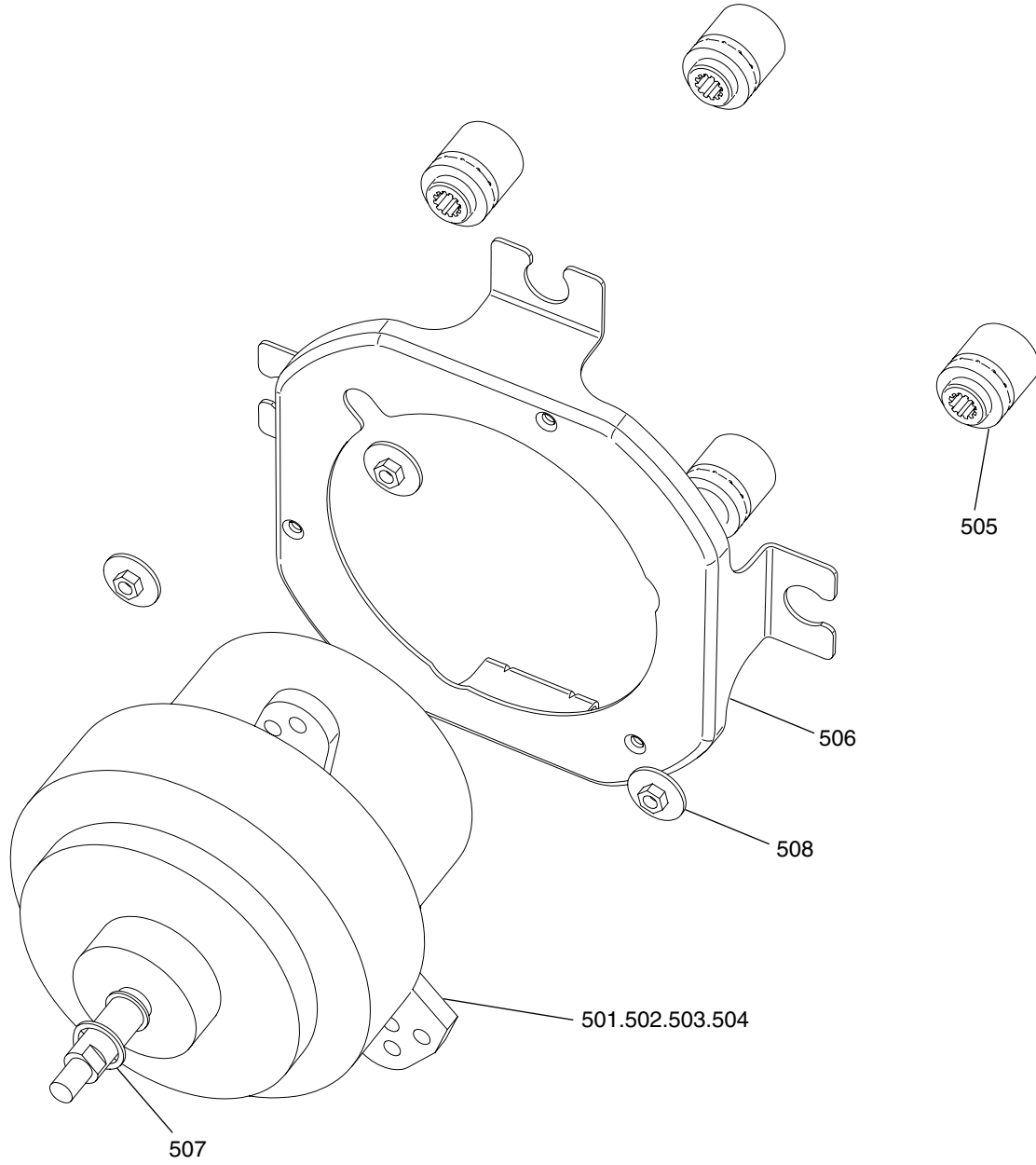
BLOWER PARTS (1)



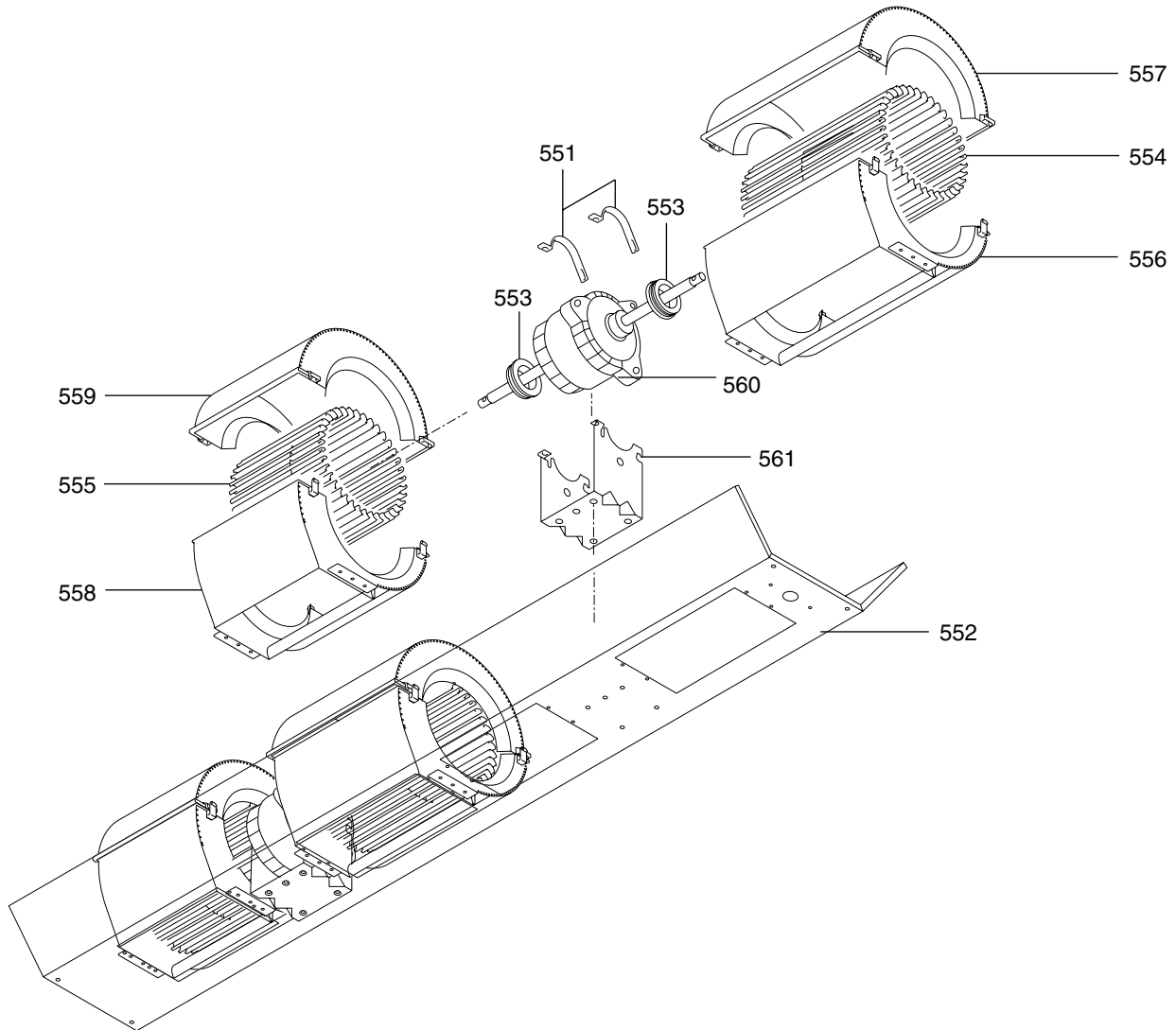
| No. | Part No. | G : RoHS Apply Only W : RoHS Apply by Running Change | | Spec. | PLFY-P20VLMD-E | PLFY-P25VLMD-E | PLFY-P32VLMD-E | PLFY-P40VLMD-E | PLFY-P50VLMD-E | PLFY-P63VLMD-E | Dwg. No. | Price | Revision History |
|-----|-------------|---|-------------|-------|----------------|----------------|----------------|----------------|----------------|----------------|------------|-------|------------------|
| | | | Part Name | | | | | | | | | | |
| 501 | R63 S74 220 | G | Motor | P15MW | 1 | 1 | 1 | 1 | | | P780120X01 | | E |
| 502 | R63 1E5 220 | G | Motor | P20MW | | | | | 1 | 1 | P714950X01 | | |
| 503 | R63 Y40 221 | G | Motor | P35MW | | | | | | | P714955X01 | | |
| 504 | R63 Y41 221 | G | Motor | P40MW | | | | | | | P714956X01 | | |
| 505 | R61 M91 130 | G | Motor mount | | 4 | 4 | 4 | 4 | 4 | 4 | W893009H01 | | |
| 506 | R63 M91 131 | G | Motor plate | | 1 | 1 | 1 | 1 | 1 | 1 | W645053H01 | | |
| 507 | R61 M91 136 | G | Washer | | 1 | 1 | 1 | 1 | 1 | 1 | W897145H01 | | |
| 508 | R63 491 314 | G | Washer nut | M5 | 4 | 4 | 4 | 4 | 4 | 4 | W840920H01 | | |
| | | | | | | | | | | | | | |
| | | | | | | | | | | | | | |

PLFY-P20,P25VLMD-E
 PLFY-P32,P40VLMD-E
 PLFY-P50,P63VLMD-E
 PLFY-P80,P100VLMD-E

BLOWER PARTS (1)



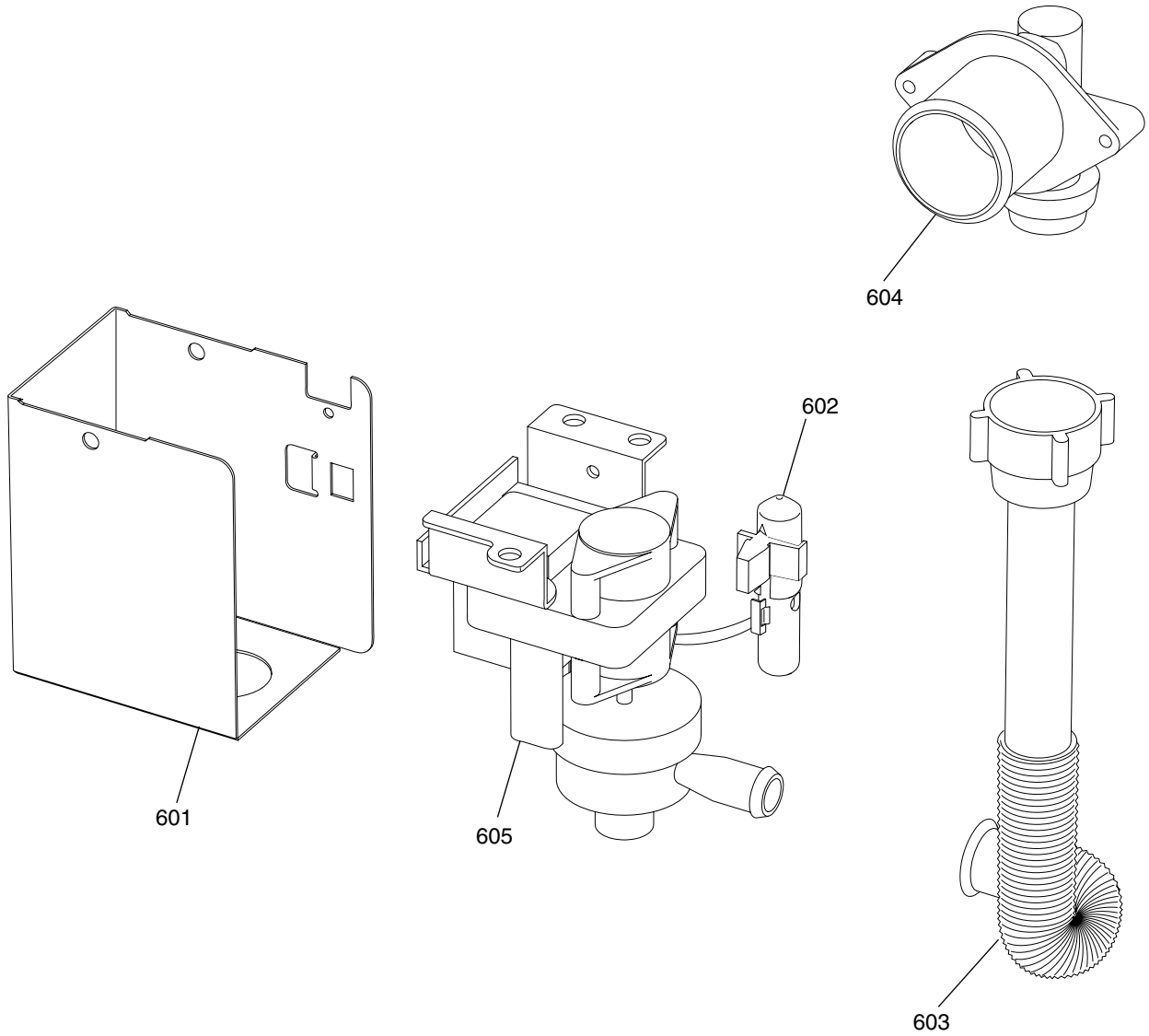
| No. | Part No. | G : RoHS Apply Only W : RoHS Apply by Running Change | | Spec. | PLFY-P80VLMD-E | PLFY-P100VLMD-E | | | | Dwg. No. | Price | Revision History |
|-----|-------------|---|-------------|-------|----------------|-----------------|--|--|--|------------|-------|------------------|
| | | | Part Name | | | | | | | | | |
| 501 | R63 S74 220 | G | Motor | P15MW | | | | | | P780120X01 | | E |
| 502 | R63 1E5 220 | G | Motor | P20MW | | | | | | P714950X01 | | |
| 503 | R63 Y40 221 | G | Motor | P35MW | 2 | | | | | P714955X01 | | |
| 504 | R63 Y41 221 | G | Motor | P40MW | | 2 | | | | P714956X01 | | |
| 505 | R61 M91 130 | G | Motor mount | | 8 | 8 | | | | W893009H01 | | |
| 506 | R63 M91 131 | G | Motor plate | | 2 | 2 | | | | W645053H01 | | |
| 507 | R61 M91 136 | G | Washer | | 2 | 2 | | | | W897145H01 | | |
| 508 | R63 491 314 | G | Washer nut | M5 | 8 | 8 | | | | W840920H01 | | |
| | | | | | | | | | | | | |
| | | | | | | | | | | | | |



| No. | Part No. | G : RoHS Apply Only W : RoHS Apply by Running Change | | Spec. | PLFY-P125VLMD-E | | | | Dwg. No. | Price | Revision History |
|-----|-------------|---|----------------|---------------------|-----------------|--|--|--|------------|-------|------------------|
| | | | Part Name | | | | | | | | |
| 551 | R63 652 131 | G | Fixing plate | | 4 | | | | W353715H01 | | |
| 552 | R63 Y17 140 | G | Fan stand assy | 112 | 1 | | | | W625341G02 | | |
| 553 | R61 979 104 | G | Rubber bush | CR,black | 4 | | | | W843446H02 | | |
| 554 | R63 G21 114 | G | Sirocco fan | 180-230 | 2 | | | | W122297G02 | | |
| 555 | R63 G22 114 | G | Sirocco fan | 180-180 | 2 | | | | W122296G02 | | |
| 556 | R63 E38 109 | G | Fan casing | 180-230 | 2 | | | | W126411G02 | | |
| 557 | R63 E39 109 | G | Fan casing | 180-230 | 2 | | | | W126412G02 | | |
| 558 | R63 E40 109 | G | Fan casing | 180-180 | 2 | | | | W126411G01 | | |
| 559 | R63 E41 109 | G | Fan casing | 180-180 | 2 | | | | W126412G01 | | |
| 560 | R63 E96 220 | G | Motor | <MF>78W,1PHASE,220V | 2 | | | | P714426X01 | | |
| 561 | R63 E38 130 | G | Motor support | | 2 | | | | W260434H02 | | |

PLFY-P20,P25VLMD-E
 PLFY-P32,P40VLMD-E
 PLFY-P50,P63VLMD-E
 PLFY-P80,P100VLMD-E

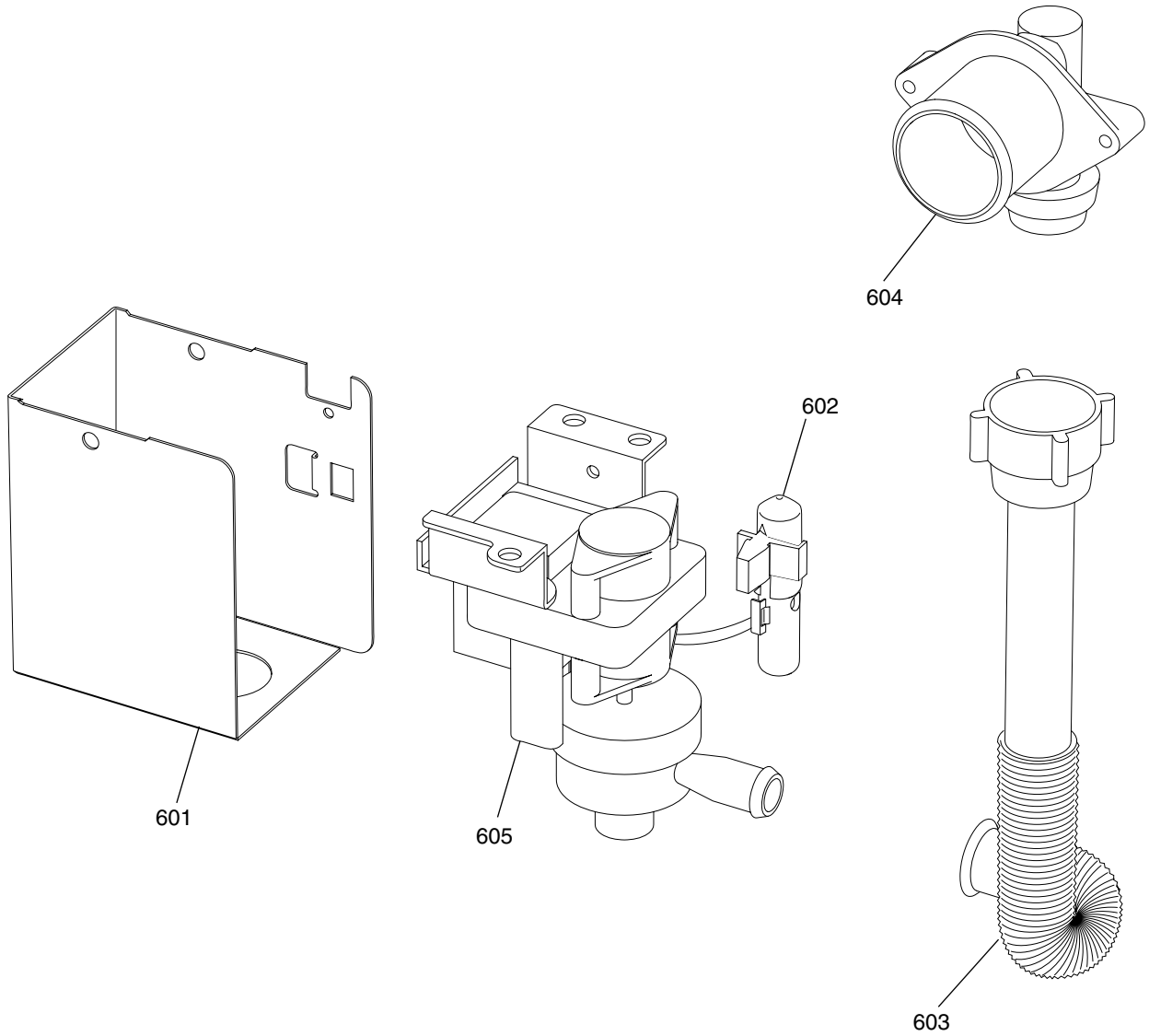
DRAIN PUMP PARTS



| No. | Part No. | G : RoHS Apply Only W : RoHS Apply by Running Change | | Spec. | PLFY-P20VLMD-E | PLFY-P25VLMD-E | PLFY-P32VLMD-E | PLFY-P40VLMD-E | PLFY-P50VLMD-E | PLFY-P63VLMD-E | Dwg. No. | Price | Revision History |
|-----|-------------|---|-------------------|---------------|----------------|----------------|----------------|----------------|----------------|----------------|------------|-------|------------------|
| | | | Part Name | | | | | | | | | | |
| 601 | R61 M91 668 | G | Drain pump cover | | 1 | 1 | 1 | 1 | 1 | 1 | W645424H02 | | |
| 602 | R63 M91 287 | G | Drain sensor | | 1 | 1 | 1 | 1 | 1 | 1 | W861228G07 | | |
| 603 | R61 E38 527 | G | Hose for pump LVD | | 1 | 1 | 1 | 1 | 1 | 1 | P645057X02 | | |
| 604 | R61 A75 218 | G | Socket | | 1 | 1 | 1 | 1 | 1 | 1 | W621301H01 | | |
| 605 | R63 6H4 539 | G | Drain pump | PJD-05230MD-3 | 1 | 1 | 1 | 1 | 1 | 1 | P722101X02 | | E |
| | | | | | | | | | | | | | |
| | | | | | | | | | | | | | |
| | | | | | | | | | | | | | |
| | | | | | | | | | | | | | |

PLFY-P20,P25VLMD-E
 PLFY-P32,P40VLMD-E
 PLFY-P50,P63VLMD-E
 PLFY-P80,P100VLMD-E

DRAIN PUMP PARTS



| No. | Part No. | G : RoHS Apply Only W : RoHS Apply by Running Change | | Spec. | PLFY-P80VLMD-E | PLFY-P100VLMD-E | | | | Dwg. No. | Price | Revision History |
|-----|-------------|---|-------------------|---------------|----------------|-----------------|--|--|--|------------|-------|------------------|
| | | | Part Name | | | | | | | | | |
| 601 | R61 M91 668 | G | Drain pump cover | | 1 | 1 | | | | W645424H02 | | |
| 602 | R63 M91 287 | G | Drain sensor | | 1 | 1 | | | | W861228G07 | | |
| 603 | R61 E38 527 | G | Hose for pump LVD | | 1 | 1 | | | | P645057X02 | | |
| 604 | R61 A75 218 | G | Socket | | 1 | 1 | | | | W621301H01 | | |
| 605 | R63 6H4 539 | G | Drain pump | PJD-05230MD-3 | 1 | 1 | | | | P722101X02 | | E |
| | | | | | | | | | | | | |
| | | | | | | | | | | | | |
| | | | | | | | | | | | | |
| | | | | | | | | | | | | |

