

# SERVICE PARTS LIST FOR MITSUBISHI ELECTRIC PACKAGED AIR-CONDITIONERS

Series : PFD-P250VM-A  
PFD-P500VM-A

For use with the R407C

REVISED

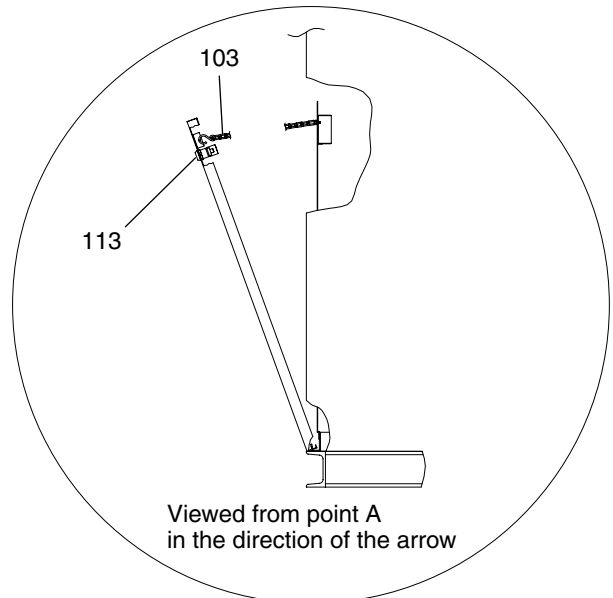
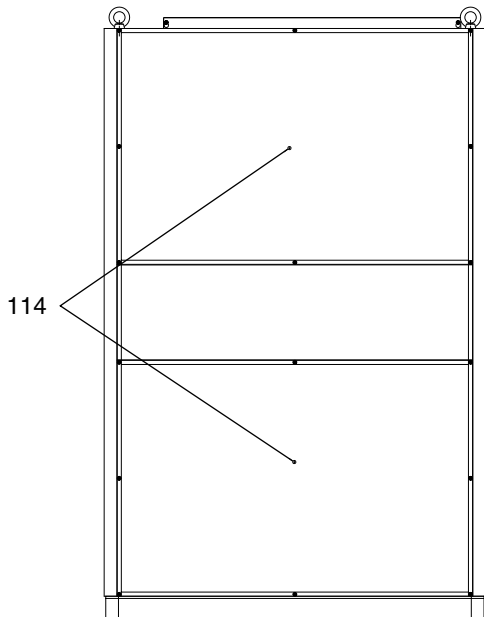
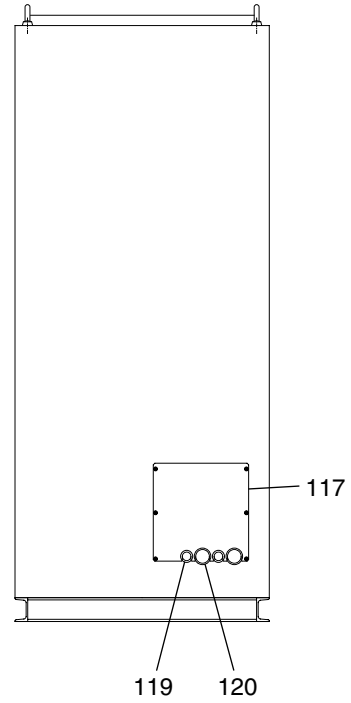
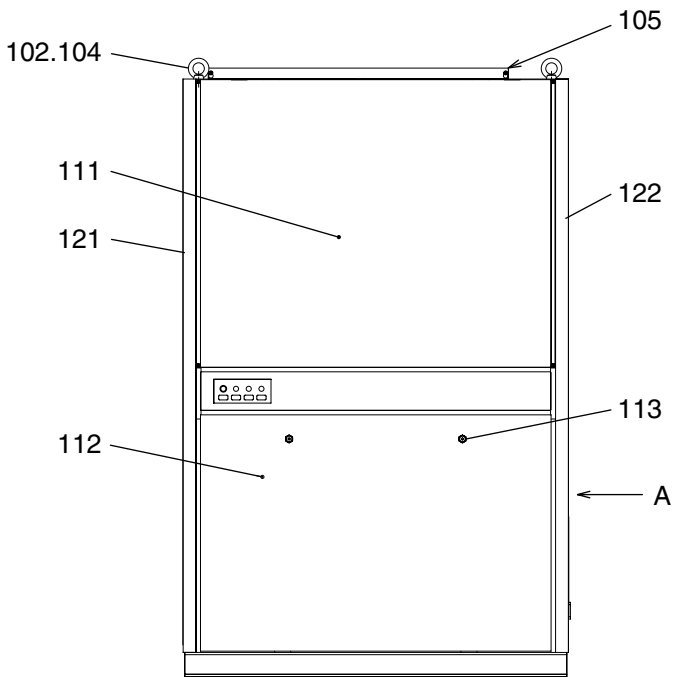
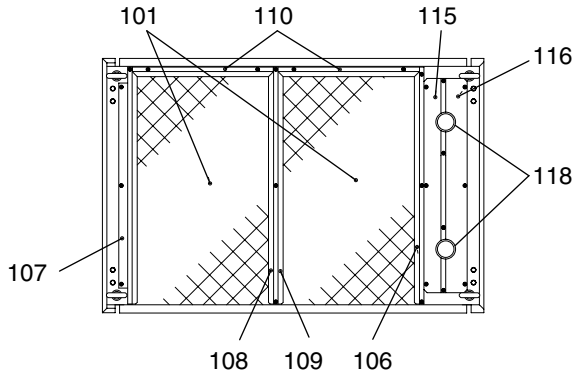
June 2006

BWE0402B

## INDEX

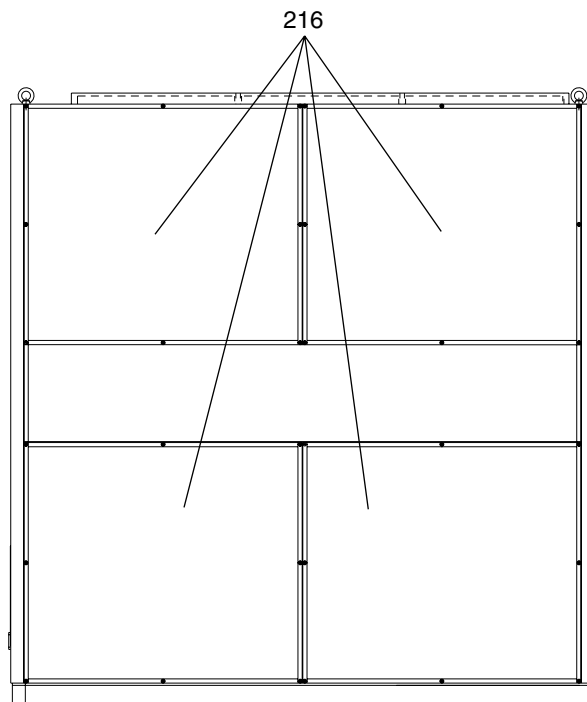
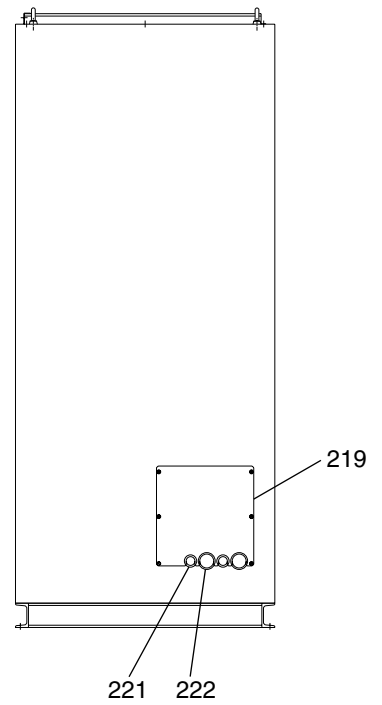
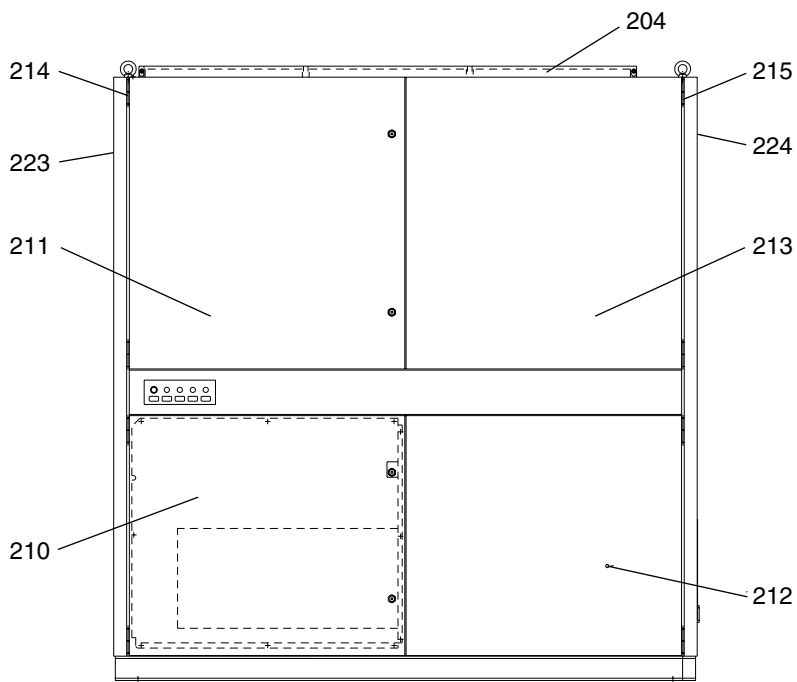
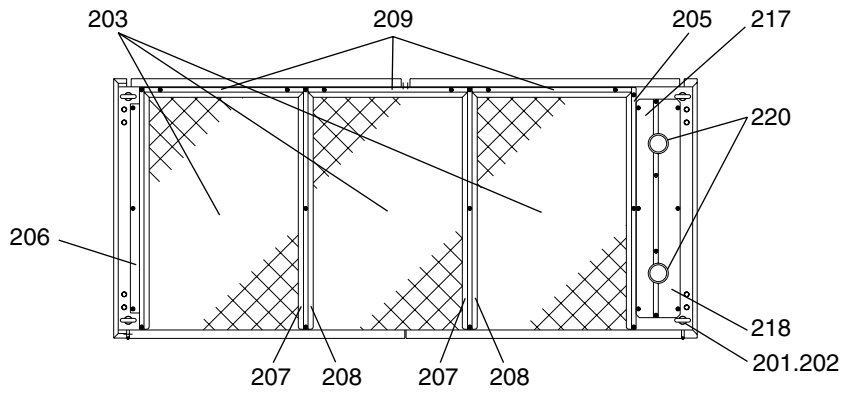
PFD-P250VM-A  
PFD-P500VM-A



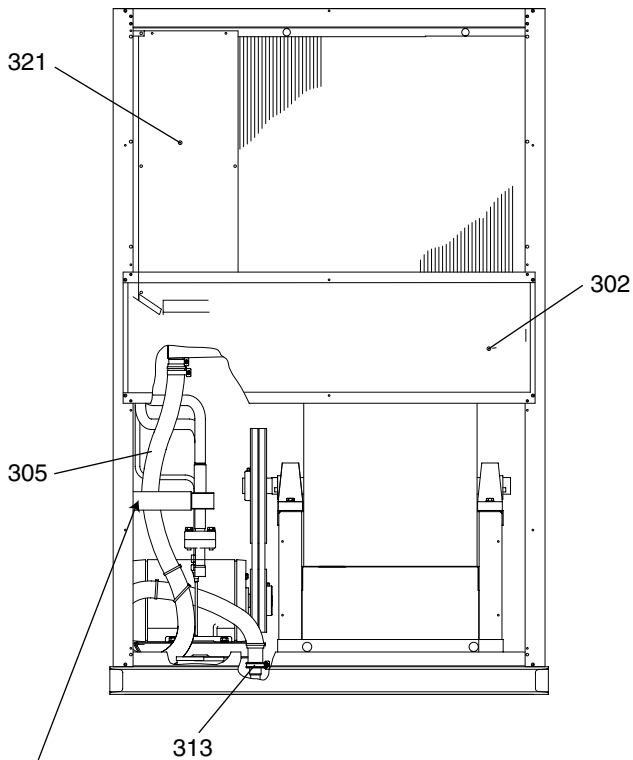
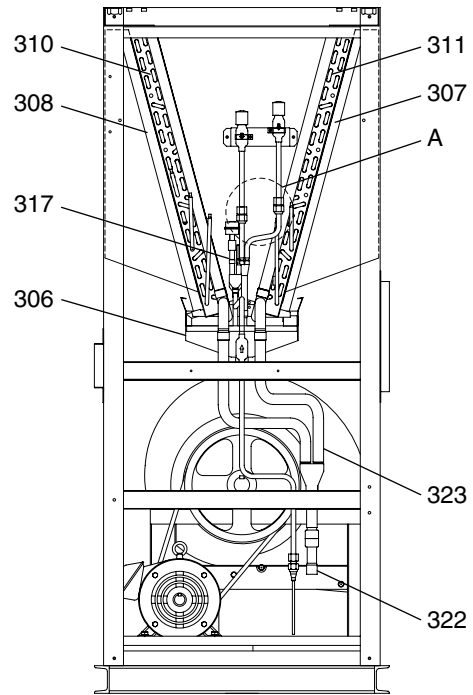
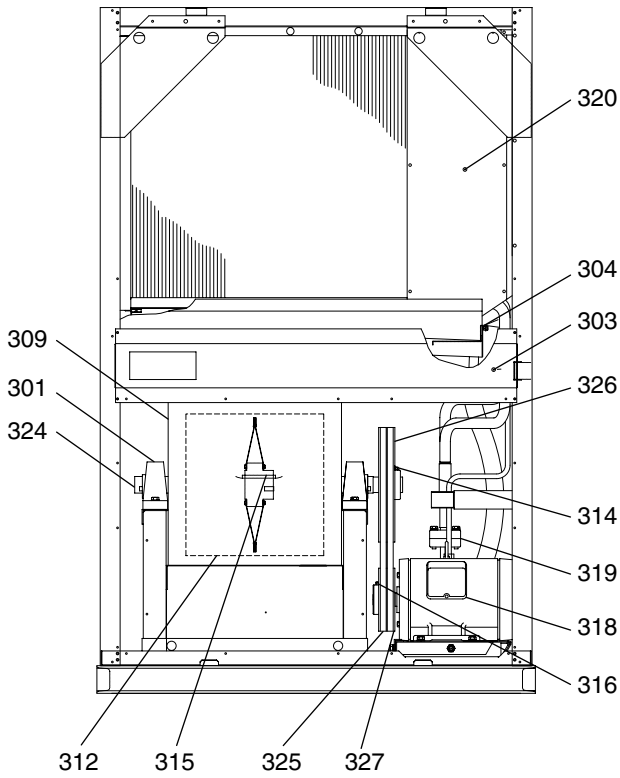


Viewed from point A  
in the direction of the arrow

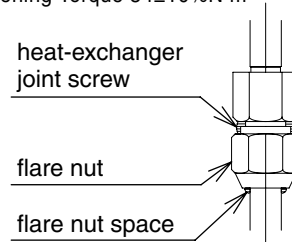








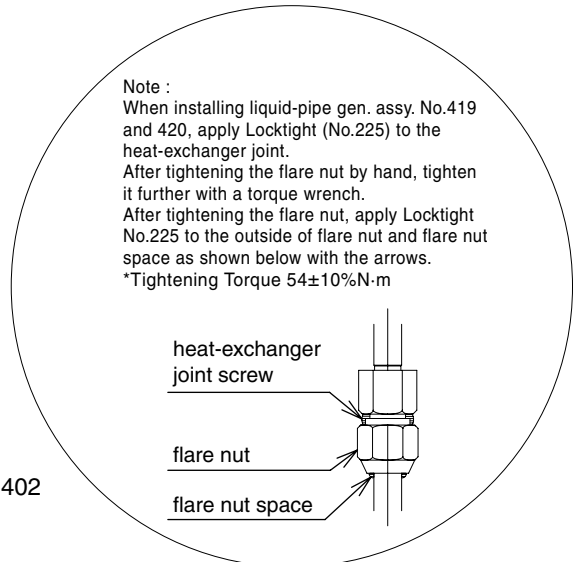
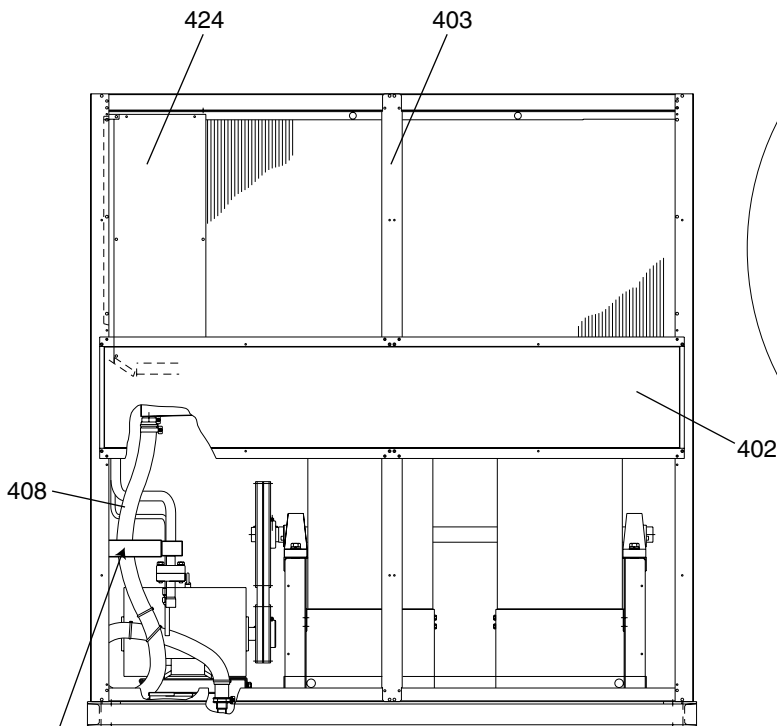
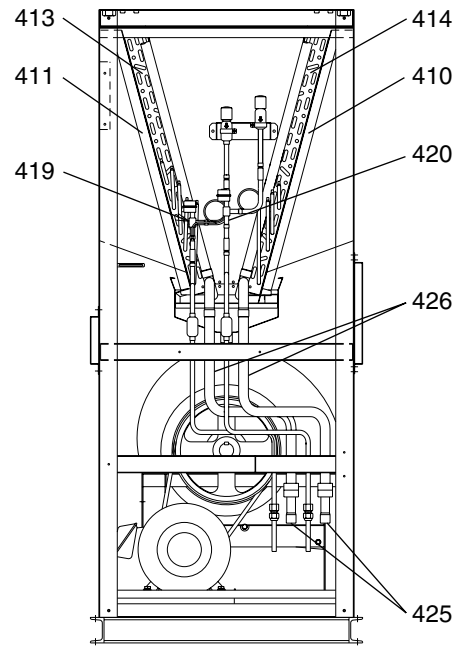
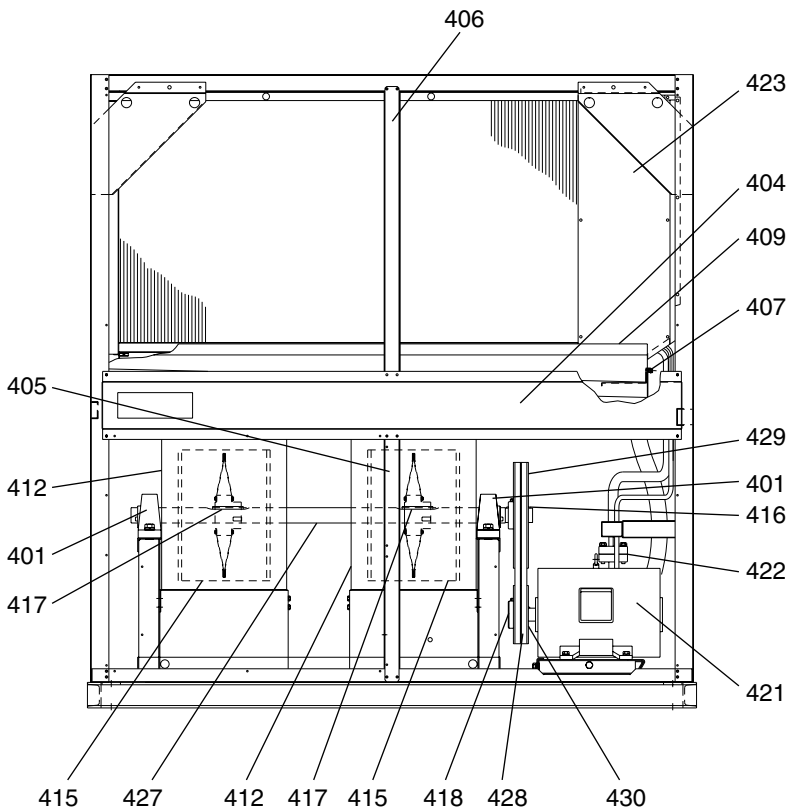
Note :  
 When installing liquid-pipe gen. assy. No.317, apply Locktight (No.225) to the screw at the heat-exchanger joint.  
 After tightening the flare nut by hand, tighten it further with a torque wrench.  
 After tightening the flare nut, apply Locktight No.225 to the outside of flare nut and flare nut space as shown below with the arrows.  
 \*Tightening Torque  $54 \pm 10\% \text{N}\cdot\text{m}$



Detailed View of Section A

Note:  
 Drain hose must be kept within the specified frame.  
 Otherwise, it may come into contact with rotating parts and sustain damage. Do not cut the cable ties on the drain hose. If the ties are removed, the loop will come undone and will result in water leaks.



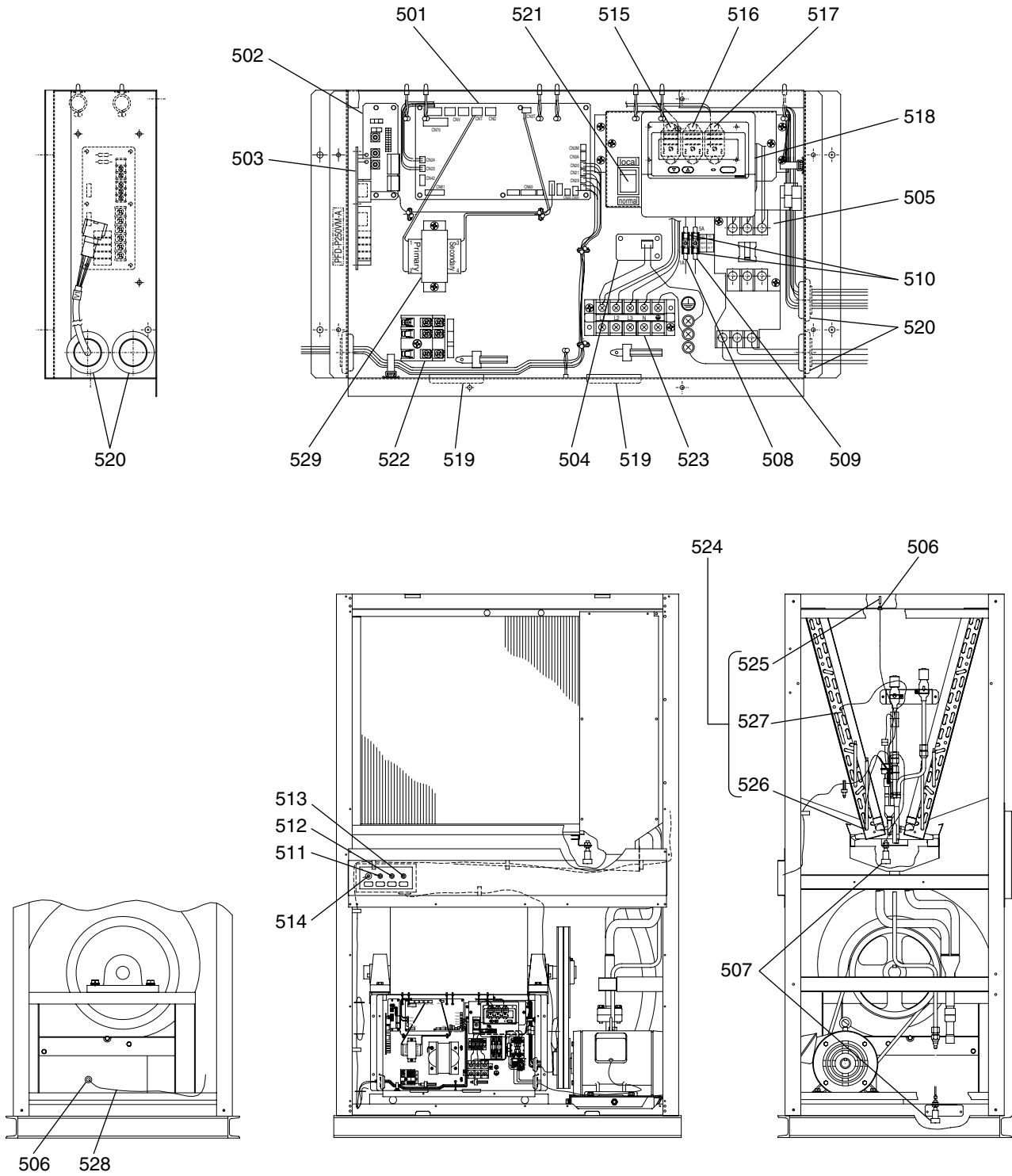


Note :  
 When installing liquid-pipe gen. assy. No.419 and 420, apply Locktight (No.225) to the heat-exchanger joint.  
 After tightening the flare nut by hand, tighten it further with a torque wrench.  
 After tightening the flare nut, apply Locktight No.225 to the outside of flare nut and flare nut space as shown below with the arrows.  
 \*Tightening Torque 54±10%N·m

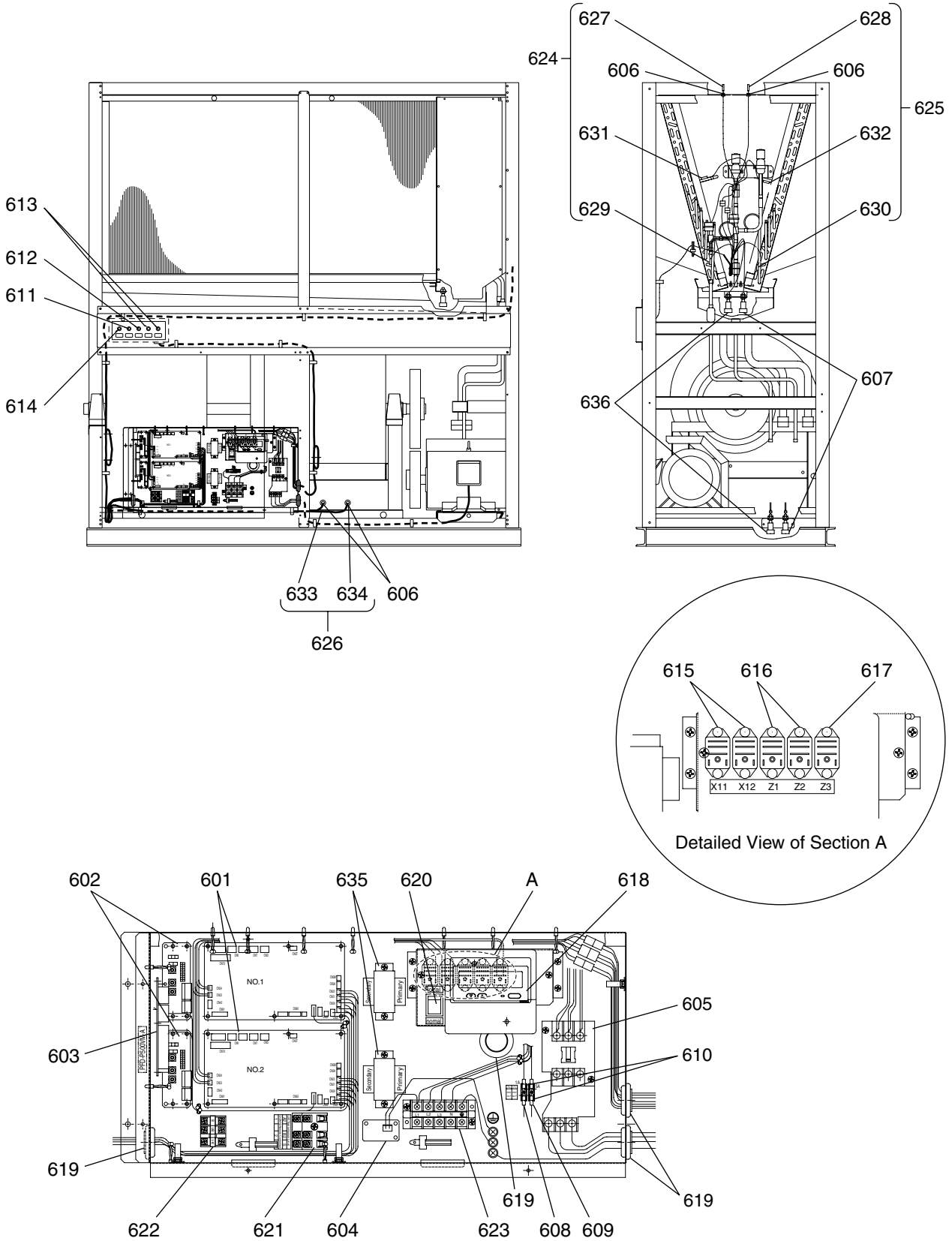
Note:  
 Drain hose must be kept within the specified frame.  
 Otherwise, it may come into contact with rotating parts and sustain damage. Do not cut the cable ties on the drain hose. If the ties are removed, the loop will come undone and will result in water leaks.



No.	Part No.	RoHS Compliant : G		Spec.	PFD-P500VM-A			Dwg. No.	Price	Revision History
			Part Name							
401	R61 L42 103	G	Ball bearing unit		2					B
402	R63 N63 125	G	Beam B assy		1					B
403	R63 N61 633	G	Beam BV assy		1					B
404	R63 Y25 629	G	Beam F assy		1					B
405	R63 Y26 629	G	Beam F1 assy		1					B
406	R63 Y27 629	G	Beam F2 assy		1					B
407	R63 N61 465	G	Block board 2 assy		1					B
408	R63 L42 525	G	Drain hose assy		1					B
409	R63 N61 529	G	Drain pan assy		1					B
410	R63 Y13 501	G	Eliminator 560B		3					B
411	R63 Y14 501	G	Eliminator 560F		3					B
412	R63 Y02 109	G	Fan case 39-27		2					B
413	R63 Y82 481	G	Heat exchanger assy 1		1					B
414	R63 Y83 481	G	Heat exchanger assy 2		1					B
415	R63 N61 114	G	High static pressure fan	39-27-45-R	2					B
416	R63 K03 138	G	Key	12×8×70	1					B
417	R61 618 137	G	Key	12×8×90	2					B
418	R63 K03 137	G	Key	10×8×55	1					B
419	R63 Y01 532	G	Liquid pipe assy		1					B
420	R63 Y02 532	G	Liquid pipe assy		1					B
421	R63 4H0 220	G	Motor (SF-JR)	3-phase 400V 5.5kW 4P	1					B
422	R61 F14 514	G	Packing		2					B
423	R63 Y23 629	G	Partition board CIL 1		1					B
424	R63 Y24 629	G	Partition board CIL 2		1					B
425	R63 331 494	G	Pipe assy		2					B
426	R63 Y06 490	G	Piping 1		2					B
427	R63 N61 100	G	Shaft		1					B
428	R61 620 778	G	V-belt	B51	2					B
429	R61 N63 108	G	V-pulley	250-B-2-42	1					B
430	R61 N63 107	G	V-pulley	160-B-2-38	1					B



No.	Part No.	RoHS Compliant : G		Spec.	PFD-P250VM-A			Dwg. No.	Price	Revision History
			Part Name							
501	R63 Y42 281	G	Board assy	PFD-PVM-A	1					B
502	R63 L42 281	G	Board assy		1					B
503	R63 Y43 281	G	Board assy	FP00S-OP3	1					B
504	R63 Y22 280	G	Board assy	FP-DSA	1					B
505	R63 Y34 225	G	Contactor (PAK-21JT)	3-240V 7.5(7.5A)	1					B
506	R63 729 104	G	Cord bush	KR-51	2					B
507	R63 Y01 541	G	Float switch assy 1		1					B
508	R63 Y06 241	G	Fuse	250V 1A F	1					B
509	R63 Y07 241	G	Fuse	250V 5A F	1					B
510	R61 Y08 241	G	Fuse holder	BM-SS-I-14	2					B
511	R63 Y06 217	G	LED (green)	AC240V DO8-16HMJB G/G	1					B
512	R63 Y07 217	G	LED (orange)	AC240V DO8-16HMJB O/O	1					B
513	R63 Y08 217	G	LED (red)	AC240V DO8-16HMJB R/R	1					B
514	R63 Y09 217	G	LED (White)	AC240V DO8-16HMJB W/W	1					B
515	R63 925 963	G	Relay LY2F	DC 12V	1					B
516	R63 Y07 215	G	Relay LY2F	AC 240V	1					B
517	R63 Y08 215	G	Relay LY2ZF	AC 240V	1					B
518	R63 Y21 304	G	Rimocon	PAR-20MAA	1					B
519	R63 N61 104	G	Rubber bush		2					B
520	R63 Y04 104	G	Rubber bush		4					B
521	R63 G95 206	G	Switch	LLK35C59	1					B
522	R63 336 246	G	Terminal block		1					B
523	R63 Y05 246	G	Terminal block	660V,40A	1					B
524	R63 N61 200	G	Thermistor assy		1					B
525	R63 L42 200	G	Thermistor assy		1					B
526	R63 L42 202	G	Thermistor assy		1					B
527	R63 L42 204	G	Thermistor assy		1					B
528	R63 L42 212	G	Thermistor assy		1					B
529	R61 Y28 260	G	Transformer		1					B



No.	Part No.	RoHS Compliant : G		Spec.	PFD-P500VM-A			Dwg. No.	Price	Revision History
		Part Name								
601	R63 Y42 281	G	Board assy	PFD-PVM-A	2					B
602	R63 L42 281	G	Board assy		2					B
603	R63 Y43 281	G	Board assy	FP00S-OP3	1					B
604	R63 Y22 280	G	Board assy	FP-DSA	1					B
605	R63 Y35 225	G	Contactora (PAK-21JT)	3-240V 11(12A)	1					B
606	R63 729 104	G	Cord bush	KR-51	4					B
607	R63 Y02 541	G	Float switch assy 2		1					B
608	R63 Y06 241	G	Fuse	250V 1A F	1					B
609	R63 Y07 241	G	Fuse	250V 5A F	1					B
610	R61 Y08 241	G	Fuse holder	BM-SS-I-14	2					B
611	R63 Y06 217	G	LED (green)	AC240V DO8-16HMJB G/G	1					B
612	R63 Y07 217	G	LED (orange)	AC240V DO8-16HMJB O/O	1					B
613	R63 Y08 217	G	LED (red)	AC240V DO8-16HMJB R/R	2					B
614	R63 Y09 217	G	LED (White)	AC240V DO8-16HMJB W/W	1					B
615	R63 925 963	G	Relay LY2F	DC 12V	2					B
616	R63 Y07 215	G	Relay LY2F	AC 240V	2					B
617	R63 Y08 215	G	Relay LY2ZF	AC 240V	1					B
618	R63 Y21 304	G	Rimocon	PAR-20MAA	1					B
619	R63 Y04 104	G	Rubber bush		5					B
620	R63 G95 206	G	Switch	LLK35C59	1					B
621	R63 336 246	G	Terminal block	ETT-3P	1					B
622	R63 Y08 715	G	Terminal block		1					B
623	R63 Y05 246	G	Terminal block	660V,40A	1					B
624	R63 N61 200	G	Thermistor assy 1		1					B
625	R63 N63 200	G	Thermistor assy 2		1					B
626	R63 N66 200	G	Thermistor assy F		1					B
627	R63 L42 200	G	Thermistor assy		1					B
628	R63 L42 201	G	Thermistor assy		1					B
629	R63 L42 202	G	Thermistor assy		1					B
630	R63 L42 203	G	Thermistor assy		1					B
631	R63 L42 204	G	Thermistor assy		1					B
632	R63 L42 211	G	Thermistor assy		1					B
633	R63 L42 212	G	Thermistor assy		1					B
634	R63 L42 213	G	Thermistor assy		1					B
635	R61 Y28 260	G	Transformer		2					B
636	R63 Y01 541	G	Float switch assy 1		1					B

