

July 2006

 No. OC356
 REVISED EDITION-A

TECHNICAL & SERVICE MANUAL

Series PKFY Wall Mounted R410A / R407C / R22

<Indoor unit>
 [Model names]

PKFY-P63VFM-E

PKFY-P100VFM-E

[Service Ref.]

PKFY-P63VFM-E
PKFY-P100VFM-E

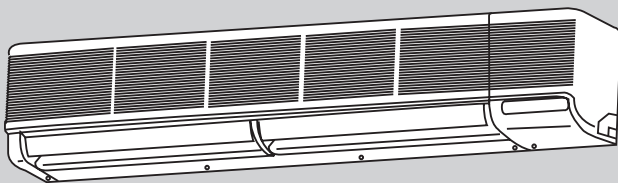
Revision:

- RoHS PARTS LIST is added.
- Some descriptions have been modified.

- Please void OC356.

Note:

- This manual describes only service data of the indoor units.
- RoHS compliant products have <G> mark on the spec name plate.
- For servicing of RoHS compliant products, refer to the RoHS Parts List.



Indoor unit

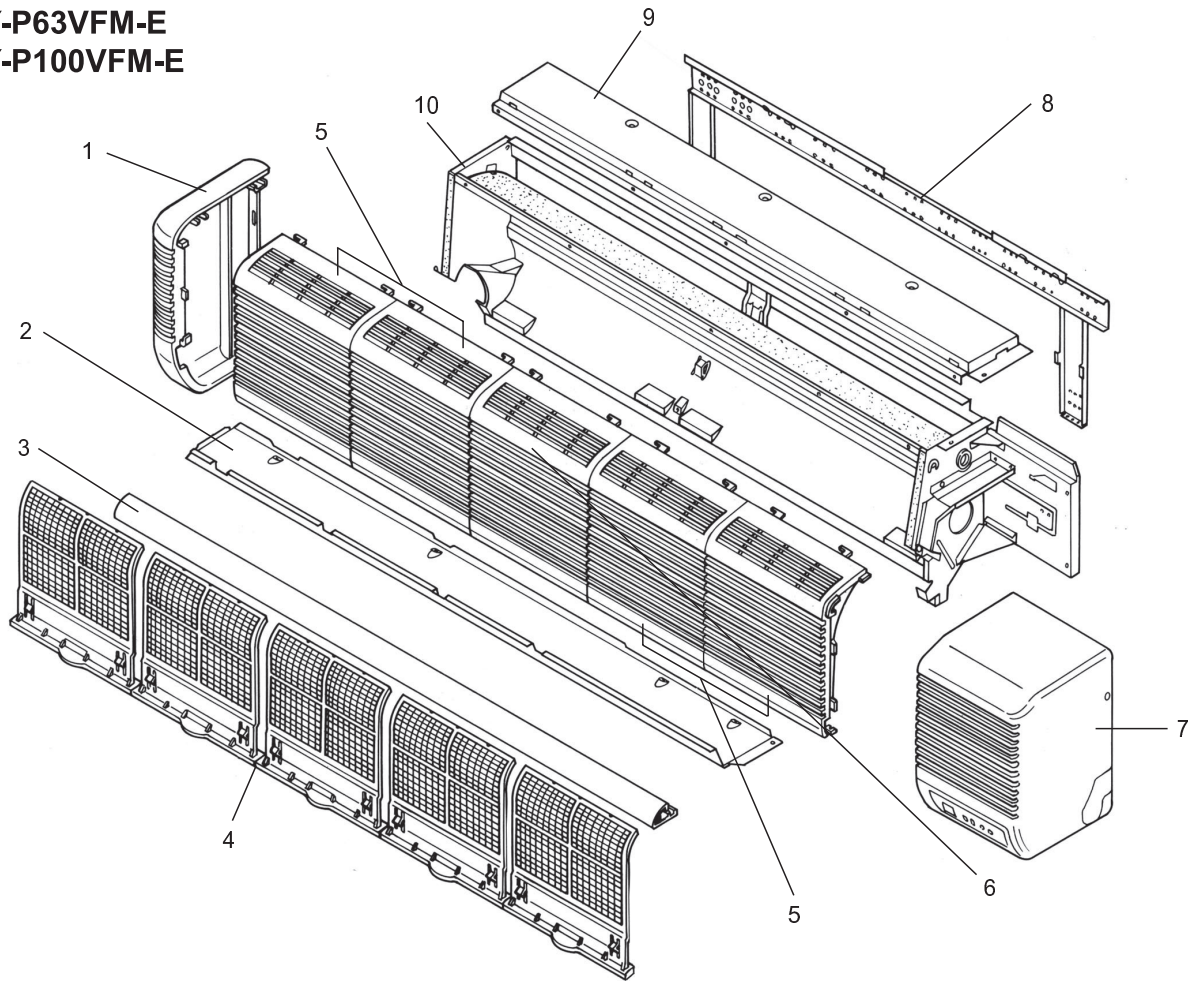
CONTENTS

1. SAFETY PRECAUTION	2
2. PART NAMES AND FUNCTIONS	6
3. SPECIFICATIONS	8
4. OUTLINES AND DIMENSIONS	11
5. WIRING DIAGRAM	13
6. REFRIGERANT SYSTEM DIAGRAM	14
7. TROUBLE SHOOTING	15
8. DISASSEMBLY PROCEDURE	22
9. PARTS LIST	25
10. RoHS PARTS LIST	28

STRUCTURAL PARTS

PKFY-P63VFM-E

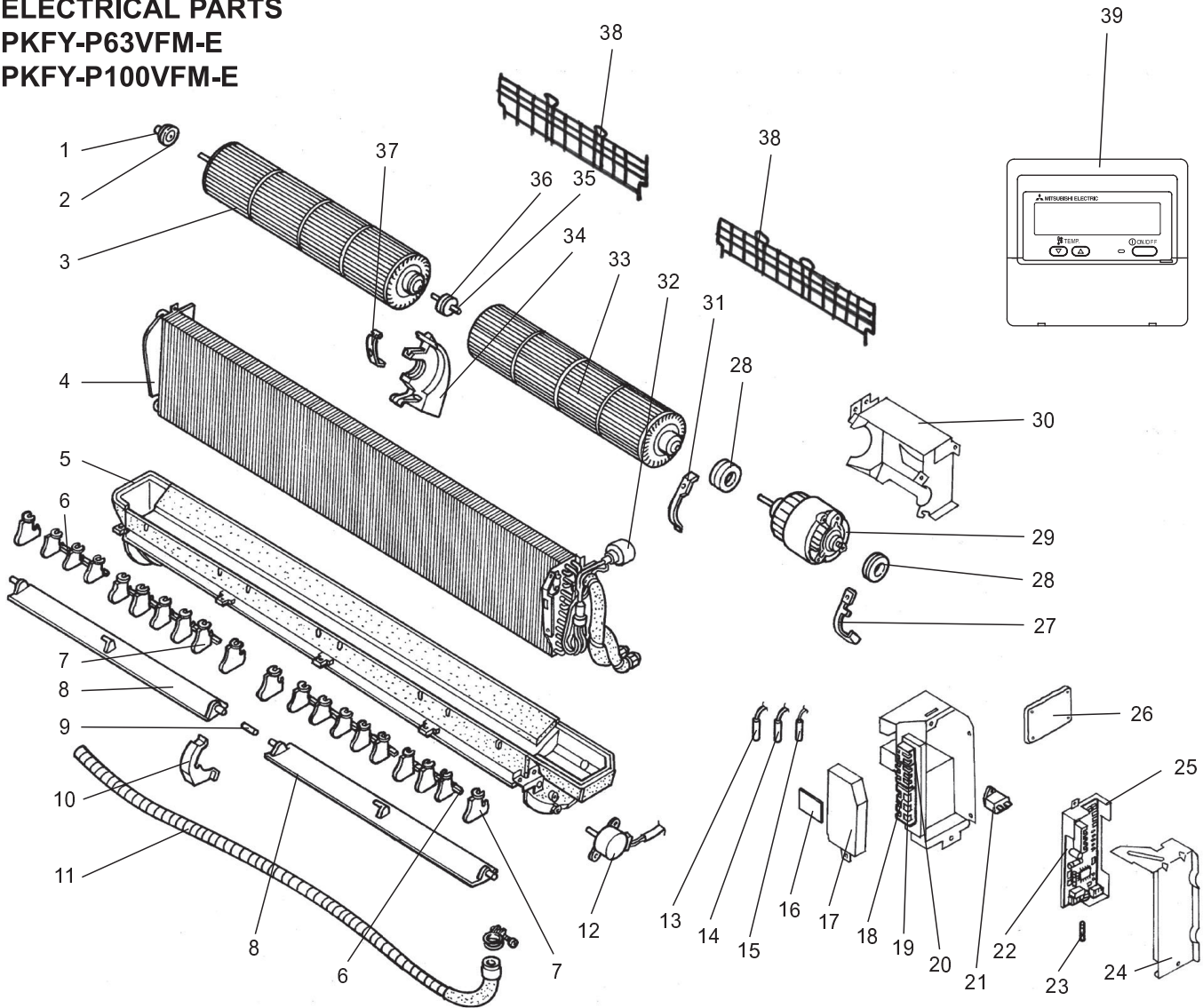
PKFY-P100VFM-E



Part number that is circled is not shown in the figure.

No.	Part No.	Part Name	Specification	Q'ty / set		Remarks (Drawing No.)	Wiring Diagram Symbol	Recom- mended Q'ty	Price	
				PKFY-P·VFM-E					Unit	Amount
				63	100					
1	R01 12G 662	LEFT SIDE PANEL		1	1					
2	R01 E01 812	UNDER PLATE		1						
	R01 E00 812	UNDER PLATE			1					
3	R01 E00 811	NOSE		1						
	R01 E01 811	NOSE			1					
4	R01 A17 500	AIR FILTER		4	5					
5	R01 12G 691	INTAKE GRILLE		2	2					
6	R01 16G 692	INTAKE GRILLE			1					
7	R01 12G 661	RIGHT SIDE PANEL		1	1					
8	R01 12G 808	BACK PLATE		1						
	R01 16G 808	BACK PLATE			1					
9	R01 E01 641	TOP PLATE		1						
	R01 E00 641	TOP PLATE			1					
10	—	BOX ASSEMBLY		1		(RG00A734GJ3)				
	—	BOX ASSEMBLY			1	(RG00A734GJ4)				
⑪	R01 12G 523	DRAIN SOCKET		1	1					

ELECTRICAL PARTS
PKFY-P63VFM-E
PKFY-P100VFM-E

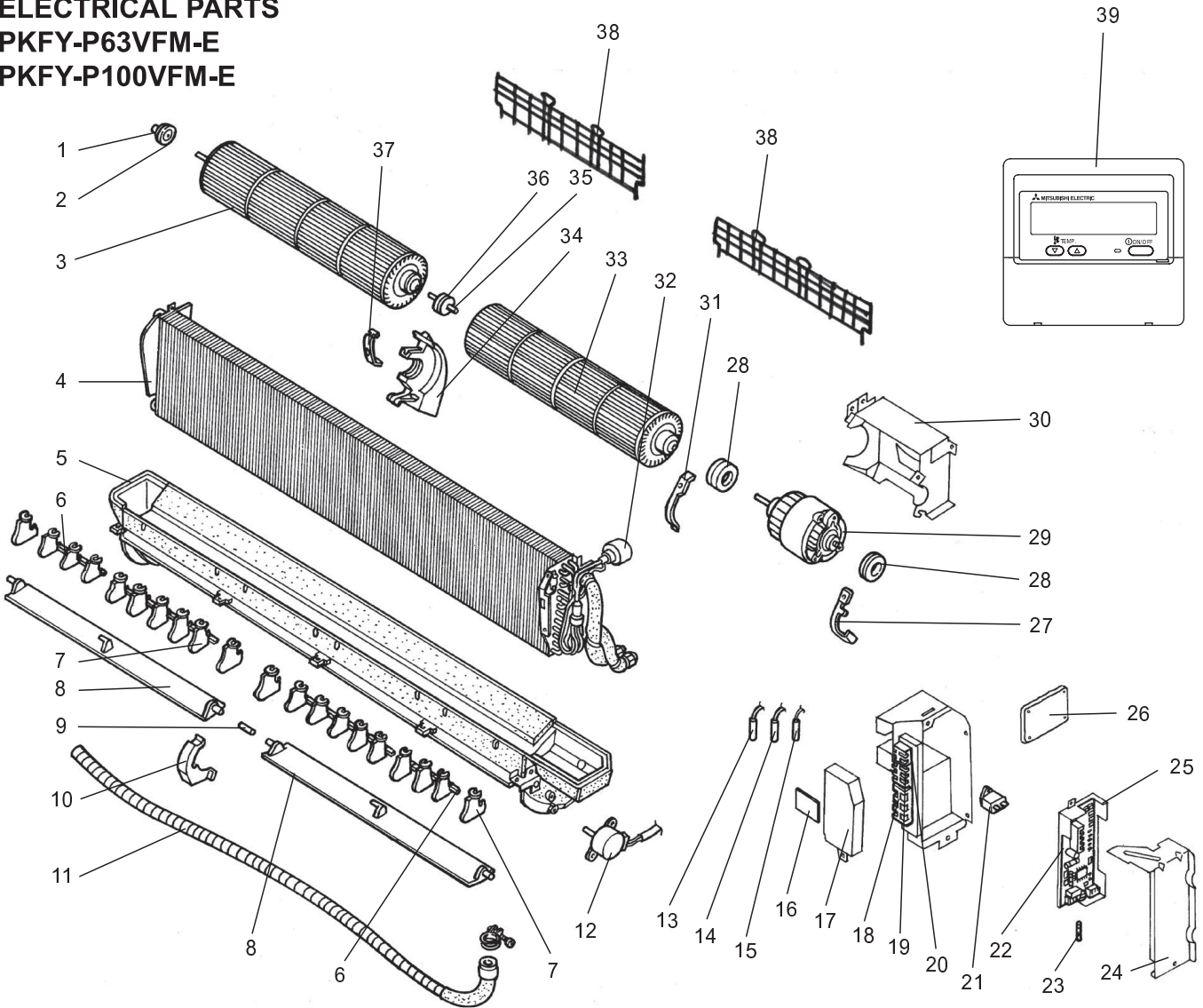


No.	Part No.	Part Name	Specification	Q'ty / set		Remarks (Drawing No.)	Wiring Diagram Symbol	Recom- mended Q'ty	Price	
				PKFY-P•VFM-E					Unit	Amount
				63	100					
1	R01 Z61 102	BEARING MOUNT		1	1					
2	R01 005 103	SLEEVE BEARING		1	1					
3	R01 13G 114	LEFT LINEFLOW FAN		1						
	R01 17G 114	LEFT LINEFLOW FAN			1					
4	T7W K28 480	HEAT EXCHANGER		1						
	T7W K29 480	HEAT EXCHANGER			1					
5	T7W E13 529	DRAIN PAN		1						
	T7W E14 529	DRAIN PAN			1					
6	—	ARM		3	4	(BG25H301H02)				
7	—	GUIDE VANE		16	22	(BG25J821H01)				
	—	GUIDE VANE (WITH HANDELE)		4	4	(BG25J821H02)				
	—	GUIDE VANE								
8	R01 12G 002	AUTO VANE		2						
	R01 16G 002	AUTO VANE			2					
9	R01 12G 063	JOINT SHAFT		1	1					
10	R01 12G 621	CENTER COVER		1	1					
11	R01 KV5 527	DRAIN HOSE		1	1					

Part number that is circled is not shown in the figure.

No.	Part No.	Part Name	Specification	Q'ty / set		Remarks (Drawing No.)	Wiring Diagram Symbol	Recom- mended Q'ty	Price	
				PKFY-P•VFM-E					Unit	Amount
				63	100					
12	T7W E03 223	VANE MOTOR		1	1		MV			
13	R01 E32 202	GAS PIPE THERMISTOR		1	1		TH23			
14	T7W E12 202	ROOM TEMPERATURE THERMISTOR		1	1		TH21			
15	R01 E02 202	LIQUID PIPE THERMISTOR		1	1		TH22			
16	T7W E00 294	ADDRESS BOARD		1	1		A.B			
17	—	TERMINAL COVER		1	1	(BG02J608G01)				
18	T7W A14 716	TERMINAL BLOCK	3P(L,N,⊕)	1	1		TB2			
19	T7W E00 716	TERMINAL BLOCK	3P(M1,M2,S)	1	1		TB5			
20	T7W 512 716	TERMINAL BLOCK	2P(1,2)	1	1		TB15			
21	R01 588 255	FAN MOTOR CAPACITOR	2.0 μ F 440V	1			C1			
	R01 576 255	FAN MOTOR CAPACITOR	3.0 μ F 440V		1		C1			
22	T7W E34 310	INDOOR CONTROLLER BOARD		1	1		I.B			
23	T7W 520 239	FUSE	250V 6.3A	1	1		FUSE			
24	—	CONTROLLER COVER		1	1	(BG02A648G02)				
25	—	CONTROLLER CASE		1	1	(BG25J080H02)				
26	R01 E02 313	POWER BOARD		1	1		P.B			
27	—	MOTOR BAND		1	1	(BG02H065H01)				
28	R01 12G 105	RUBBER MOUNT		2						
	R01 16G 105	RUBBER MOUNT			2					
29	R01 12G 220	FAN MOTOR	D094P40MS	1			MF			
	T7W 571 762	FAN MOTOR	D10A4P70MS		1		MF			
30	—	MOTOR LEG		1		(BG02A534H16)				
	—	MOTOR LEG			1	(RG02A534H17)				
31	—	MOTOR BAND		1	1	(BG02H178H01)				
32	T7W E17 401	LINEAR EXPANSION VALVE		1			LEV			
	T7W E18 401	LINEAR EXPANSION VALVE			1		LEV			
33	R01 13G 115	RIGHT LINE FLOW FAN		1						
	R01 17G 115	RIGHT LINE FLOW FAN			1					
34	—	CENTER SUPPORT		1	1	(BG00R259G08)				
35	R01 12G 103	SLEEVE BEARING		1	1					
36	R01 KV5 102	BEARING MOUNT		1	1					
37	—	BEARING BAND		1	1	(BG02L462H02)				
38	T7W B02 675	FAN GUARD		2						
	T7W B03 675	FAN GUARD			2					
39	—	REMOTE CONTROLLER	PAR-21MAA	1	1		R.B			
④0	R01 05A 304	ADDRESS CABLE		1	1					

ELECTRICAL PARTS
PKFY-P63VFM-E
PKFY-P100VFM-E

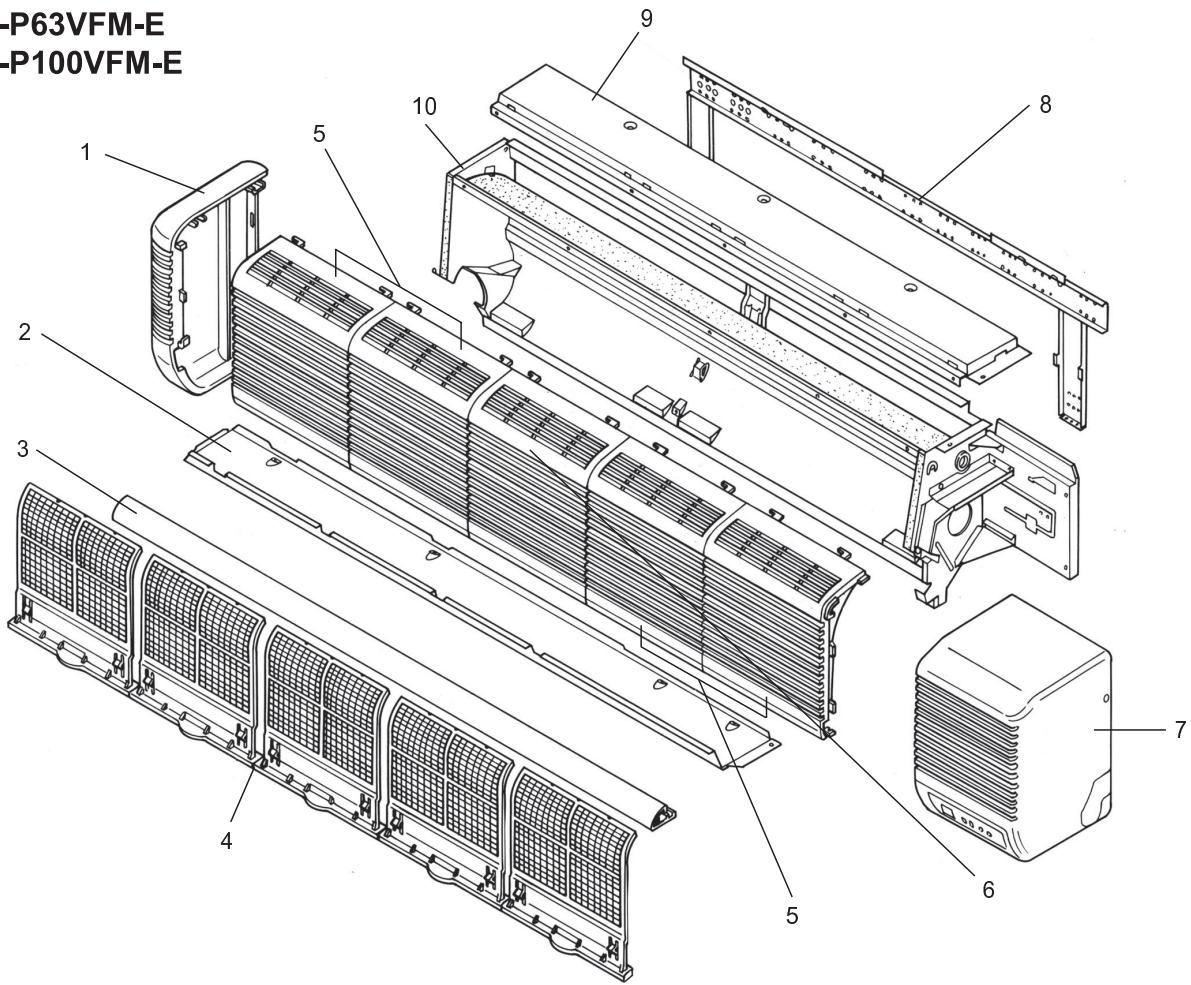


No.	RoHS	Part No.	Part Name	Specification	Q'ty / set		Remarks (Drawing No.)	Wiring Diagram Symbol	Recom- mended Q'ty	Price	
					63	100				Unit	Amount
1	G	R01 Z61 102	BEARING MOUNT		1	1					
2	G	R01 E04 103	SLEEVE BEARING		1	1					
3	G	R01 E23 114	LEFT LINEFLOW FAN		1						
	G	R01 E24 114	LEFT LINEFLOW FAN			1					
4	G	T7W K28 480	HEAT EXCHANGER		1						
	G	T7W K29 480	HEAT EXCHANGER			1					
5	G	T7W E24 529	DRAIN PAN		1						
	G	T7W E25 529	DRAIN PAN			1					
6	G	—	ARM		3	4	(BG25H301H02)				
7	G	—	GUIDE VANE		16	22	(BG25J821H01)				
	G	—	GUIDE VANE (WITH HANDELE)		4	4	(BG25J821H02)				
8	G	R01 18G 002	AUTO VANE		2						
	G	R01 19G 002	AUTO VANE			2					
9	G	R01 13G 063	JOINT SHAFT		1	1					
10	G	R01 14G 621	CENTER COVER		1	1					
11	G	R01 E04 527	DRAIN HOSE		1	1					

Part number that is circled is not shown in the figure.

No.	RtHS	Part No.	Part Name	Specification	Q'ty / set		Remarks (Drawing No.)	Wiring Diagram Symbol	Recom- mended Q'ty	Price	
					PKFY-P•VFM-E					Unit	Amount
					63	100					
12	G	T7W E05 223	VANE MOTOR		1	1		MV			
13	G	R01 H15 202	GAS PIPE THERMISTOR		1	1		TH23			
14	G	R01 H06 202	ROOM TEMPERATURE THERMISTOR		1	1		TH21			
15	G	R01 H05 202	LIQUID PIPE THERMISTOR		1	1		TH22			
16	G	T7W E01 294	ADDRESS BOARD		1	1		A.B			
17	G	—	TERMINAL COVER		1	1	(BG02J608G01)				
18	G	T7W E32 716	TERMINAL BLOCK	3P(L,N,⊕)	1	1		TB2			
19	G	T7W E35 716	TERMINAL BLOCK	3P(M1,M2,S)	1	1		TB5			
20	G	T7W E33 716	TERMINAL BLOCK	2P(1,2)	1	1		TB15			
21	G	R01 E13 255	FAN MOTOR CAPACITOR	2.0 μ F 440V	1			C1			
	G	R01 E12 255	FAN MOTOR CAPACITOR	3.0 μ F 440V		1		C1			
22	G	T7W E53 310	INDOOR CONTROLLER BOARD		1	1		I.B			
23	G	R01 E06 239	FUSE	250V 6.3A	1	1		FUSE			
24	G	—	CONTROLLER COVER		1	1	(BG02A648G02)				
25	G	—	CONTROLLER CASE		1	1	(BG25J080H02)				
26	G	R01 E38 313	POWER BOARD		1	1		P.B			
27	G	—	MOTOR BAND		1	1	(BG02H065H01)				
28	G	R01 12G 105	RUBBER MOUNT		2						
	G	R01 16G 105	RUBBER MOUNT			2					
29	G	R01 13G 220	FAN MOTOR	D094P40MS	1			MF			
	G	T7W E24 762	FAN MOTOR	D10A4P70MS		1		MF			
30	G	—	MOTOR LEG		1		(BG02A534H16)				
	G	—	MOTOR LEG			1	(RG02A534H17)				
31	G	—	MOTOR BAND		1	1	(BG02H178H01)				
32	G	T7W E19 401	LINEAR EXPANSION VALVE		1			LEV			
	G	T7W E20 401	LINEAR EXPANSION VALVE			1		LEV			
33	G	R01 E04 115	RIGHT LINE FLOW FAN		1						
	G	R01 E05 115	RIGHT LINE FLOW FAN			1					
34	G	—	CENTER SUPPORT		1	1	(BG00R259G08)				
35	G	R01 E03 103	SLEEVE BEARING		1	1					
36	G	R01 KV5 102	BEARING MOUNT		1	1					
37	G	—	BEARING BAND		1	1	(BG02L462H02)				
38	G	T7W E15 675	FAN GUARD		2						
	G	T7W E16 675	FAN GUARD			2					
39	G	—	REMOTE CONTROLLER	PAR-21MAA	1	1		R.B			
40	G	R01 A01 304	ADDRESS CABLE		1	1					

STRUCTURAL PARTS
PKFY-P63VFM-E
PKFY-P100VFM-E



Part number that is circled is not shown in the figure.

No.	RoHS	Part No.	Part Name	Specification	Q'ty / set		Remarks (Drawing No.)	Wiring Diagram Symbol	Recom- mended Q'ty	Price	
					PKFY-P•VFM-E					Unit	Amount
					63	100					
1	G	R01 14G 662	LEFT SIDE PANEL		1	1					
2	G	R01 E02 812	UNDER PLATE		1						
	G	R01 E03 812	UNDER PLATE			1					
3	G	R01 E00 811	NOSE		1						
	G	R01 E01 811	NOSE			1					
4	G	R01 A17 500	AIR FILTER		4	5					
5	G	R01 17G 691	INTAKE GRILLE		2	2					
6	G	R01 18G 692	INTAKE GRILLE			1					
7	G	R01 14G 661	RIGHT SIDE PANEL		1	1					
8	G	R01 E03 808	BACK PLATE		1						
	G	R01 E04 808	BACK PLATE			1					
9	G	R01 E19 641	TOP PLATE		1						
	G	R01 E20 641	TOP PLATE			1					
10	G	—	BOX ASSEMBLY		1		(RG00A734GJ3)				
	G	—	BOX ASSEMBLY			1	(RG00A734GJ4)				
⑪	G	R01 E02 523	DRAIN SOCKET		1	1					

CITY MULTI

 **mitsubishi electric corporation**

HEAD OFFICE : TOKYO BLDG., 2-7-3, MARUNOUCHI, CHIYODA-KU, TOKYO100-8310, JAPAN
