

SERVICE PARTS LIST FOR MITSUBISHI ELECTRIC PACKAGED AIR-CONDITIONERS

Series : PFD-P•VM-E

For use with the R410A

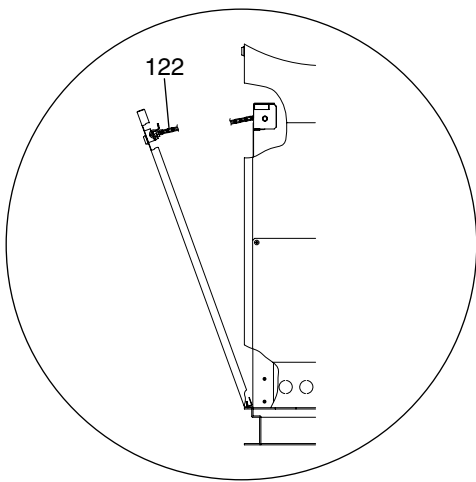
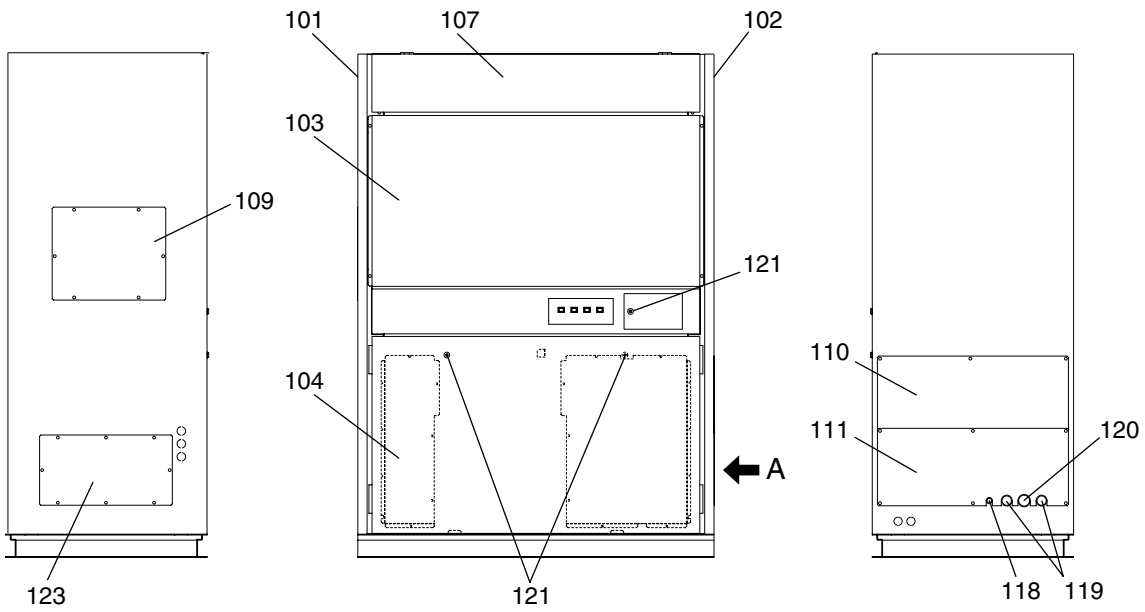
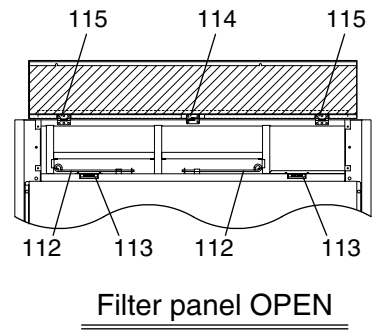
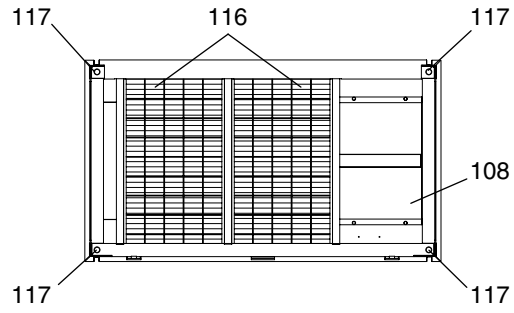
REVISED

July 2006

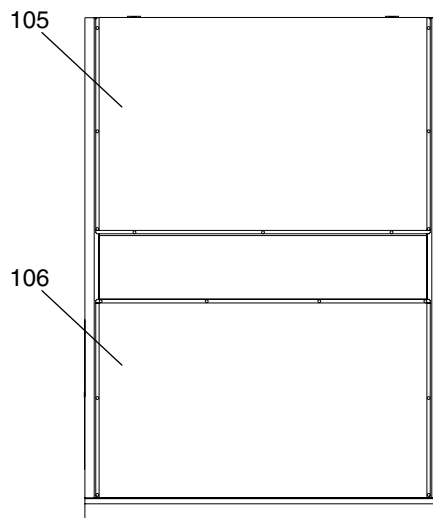
BWE0609B

INDEX
PFD-P250VM-E
PFD-P500VM-E

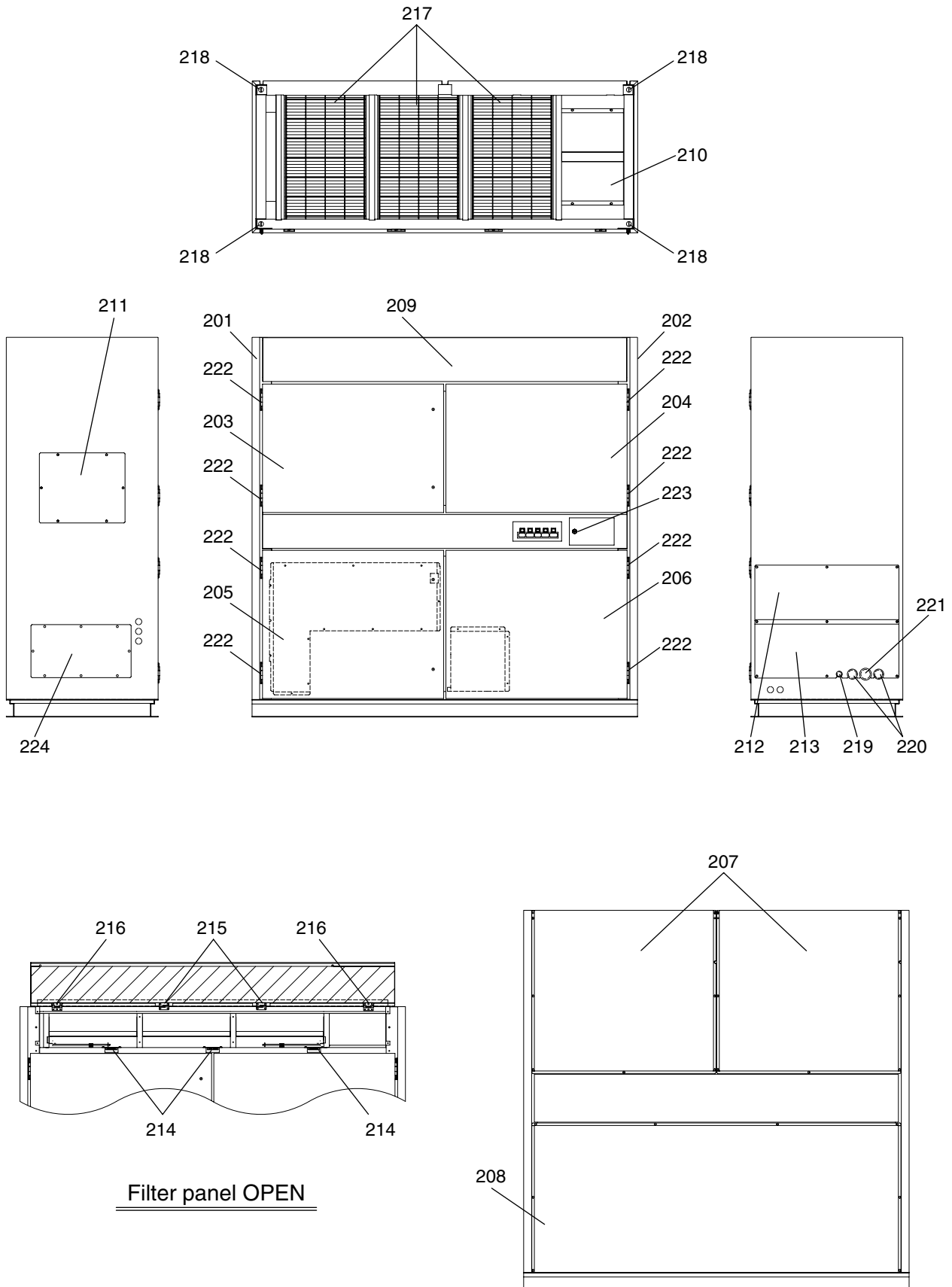




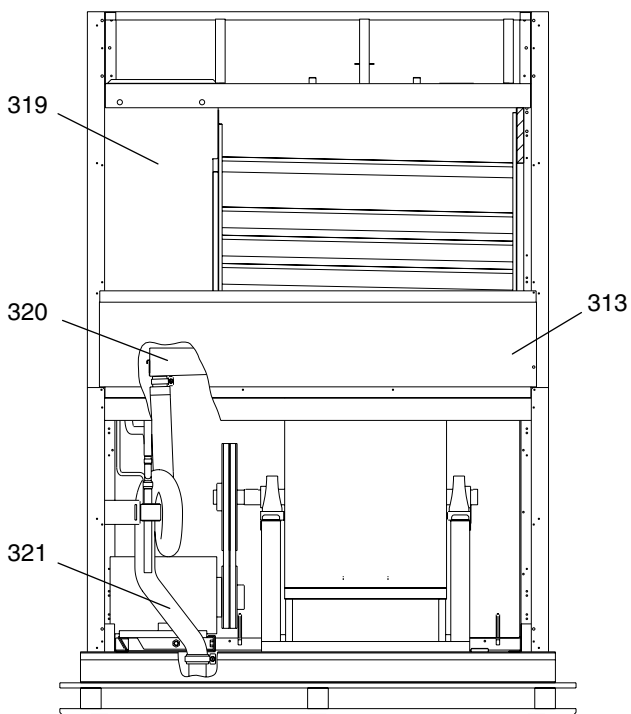
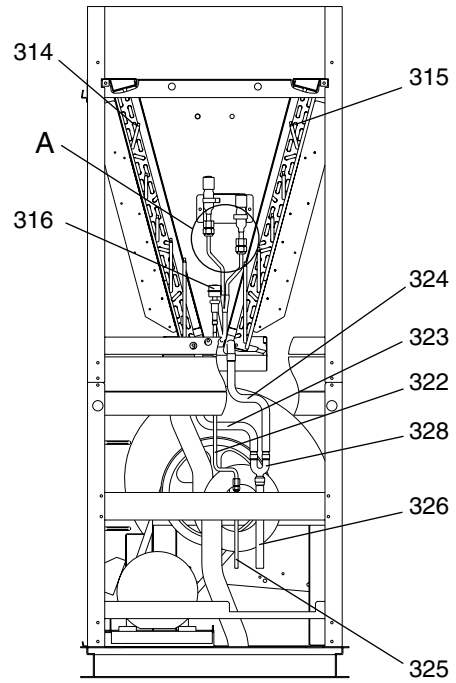
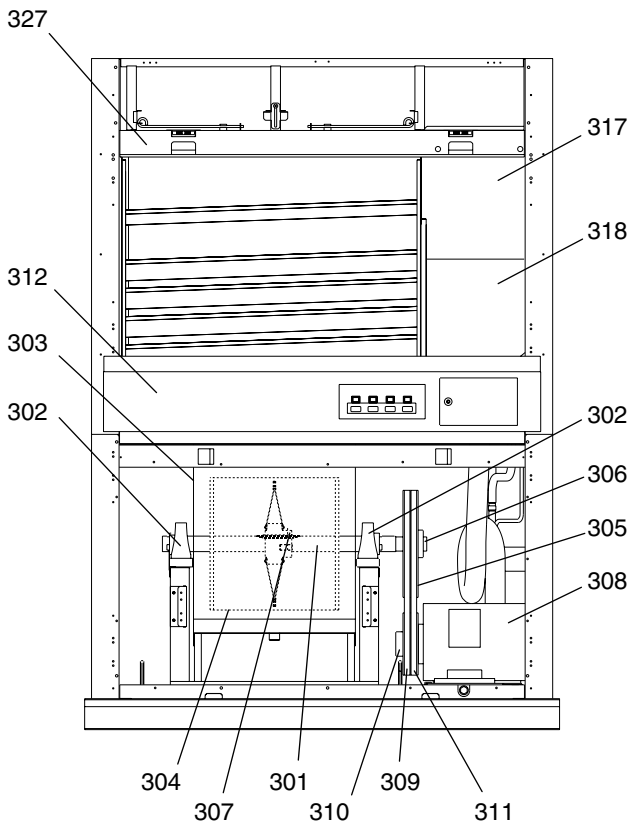
Viewed from point A
in the direction of the arrow



No.	Part No.	RoHS Compliant : G		Spec.	PFD-P250VM-E							Dwg. No.	Price	Revision History
			Part Name											
101	R63 Y05 031	G	Side panel L assy		1									
102	R63 Y06 031	G	Side panel R assy		1									
103	R63 Y10 646	G	Front panel U assy		1									
104	R63 Y11 646	G	Front panel L assy		1									
105	R63 Y42 652	G	Panel BU assy		1									
106	R63 Y43 652	G	Panel BL assy		1									
107	R63 Y46 652	G	Filter panel assy		1									
108	R63 2H2 690	G	Cover assy		1									
109	R63 Y17 667	G	Panel L cover assy	Upper	1									
110	R63 Y18 667	G	Panel R cover 1 assy		1									
111	R63 Y19 667	G	Panel R cover 2 assy		1									
112	R63 2H2 643	G	Attachment		2									
113	R63 5G0 011	G	Plate magnet		2									
114	R61 001 053	G	Hinge	TH-10SUS-L	1									
115	R63 5G0 053	G	Hinge	TH-20	2									
116	R63 2H2 500	G	Filter		2									
117	R63 L42 086	G	Cap	CP-30-BC-20	4									
118	R63 5G0 104	G	Rubber bush	24D	1									
119	R63 R22 104	G	Rubber bush	42D	2									
120	R63 N86 104	G	Rubber bush	SG-52A-UK	1									
121	R63 M29 060	G	Hexagonal lock		3									
122	R63 G85 631	G	Chain		1									
123	R63 Y20 667	G	Panel L cover assy	Under	1									



No.	Part No.	RoHS Compliant : G		Spec.	PFD-P500VM-E				Dwg. No.	Price	Revision History
			Part Name								
201	R63 Y05 031	G	Side panel L assy		1						
202	R63 Y06 031	G	Side panel R assy		1						
203	R63 Y12 646	G	Front panel UL assy		1						
204	R63 Y13 646	G	Front panel UR assy		1						
205	R63 Y14 646	G	Front panel LL assy		1						
206	R63 Y15 646	G	Front panel LR assy		1						
207	R63 Y44 652	G	Panel BU assy		2						
208	R63 Y45 652	G	Panel BL assy		1						
209	R63 Y47 652	G	Filter panel assy		1						
210	R63 5G0 690	G	Cover assy		1						
211	R63 Y17 667	G	Panel L cover assy	Upper	1						
212	R63 Y18 667	G	Panel R cover 1 assy		1						
213	R63 Y19 667	G	Panel R cover 2 assy		1						
214	R63 5G0 011	G	Plate magnet		3						
215	R61 001 053	G	Hinge	TH-10SUS-L	2						
216	R63 5G0 053	G	Hinge	TH-20	2						
217	R63 5G0 500	G	Filter		3						
218	R63 L42 086	G	Cap	CP-30-BC-20	4						
219	R63 5G0 104	G	Rubber bush	24D	1						
220	R63 R22 104	G	Rubber bush	42D	2						
221	R63 N86 104	G	Rubber bush	SG-52A-UL	1						
222	R63 5G0 054	G	Hinge		8						
223	R63 M29 060	G	Hexagonal lock		1						
224	R63 Y20 667	G	Panel L cover assy	Under	1						



Note :

When installing Liquid-pipe assy. No.316, apply Locktight (No.125) to the screw at the Heat-exchanger joint.

After tightening the flare nut by hand, tighten it further with a torque wrench.

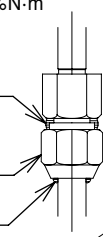
After tightening the flare nut, apply Locktight No.125 to the outside of flare nut and flare nut space as shown below with the arrows.

*Tightening Torque $54 \pm 10\% \text{N}\cdot\text{m}$

Heat-exchanger joint screw

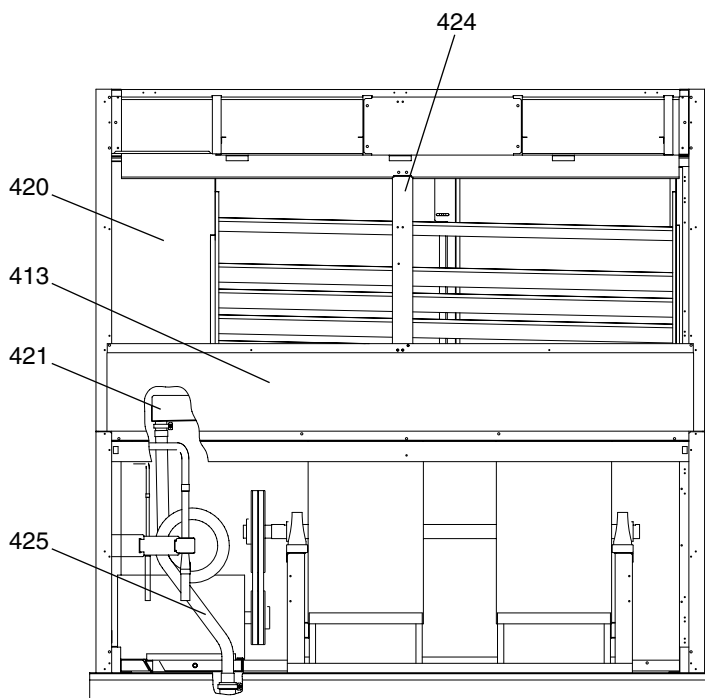
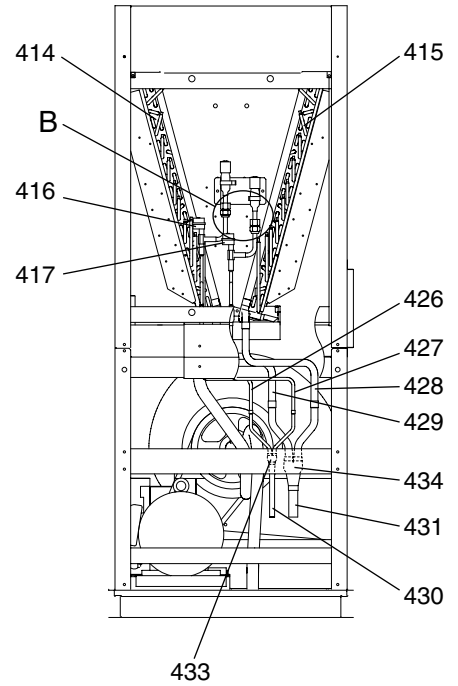
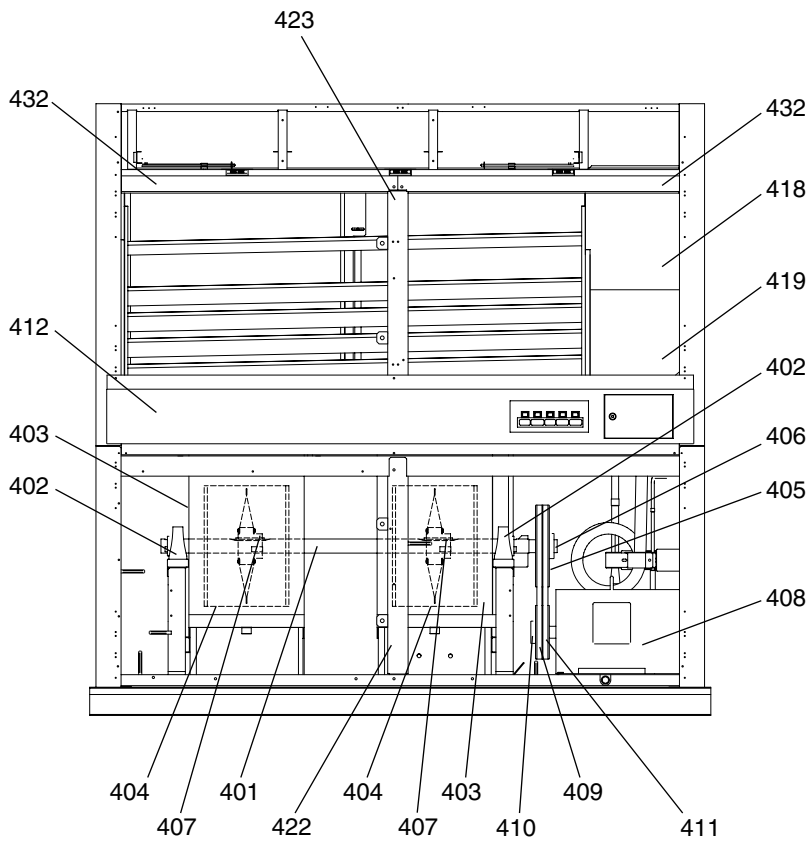
Flare nut

Flare nut space



Detailed View of Section A

No.	Part No.	RoHS Compliant : G		Spec.	PFD-P250VM-E					Dwg. No.	Price	Revision History
		Part Name										
301	R63 2H2 100	G	Shaft		1							
302	R61 L42 103	G	Ball bearing unit		2							
303	R63 Y01 109	G	Fan case	39-38	1							
304	R63 N80 114	G	Fan	39-38-45-R	1							
305	R63 2H2 107	G	V-pulley	280-B2-42	1							
306	R63 K03 138	G	Key	12x8x70	1							
307	R61 618 137	G	Key	12x8x90	1							
308	R63 6A3 220	G	Motor SF-JR	3-phase 400V 3.7kW 4P	1							
309	R61 N80 107	G	V-pulley	170-B-2 3.7kW	1							
310	R63 N61 137	G	Key	8x7x50	1							
311	R63 127 130	G	V-belt RED	B54	2							
312	R63 Y21 667	G	Lamp cover assy		1							
313	R63 Y48 652	G	Panel BM assy		1							
314	R63 2H2 481	G	Heat exchanger assy F		1							
315	R63 2H2 408	G	Heat exchanger assy B		1							
316	R63 2H2 532	G	Liquid pipe assy		1							
317	R63 2H2 667	G	Partition board U-F		1							
318	R63 2H3 667	G	Partition board D-F		1							
319	R63 2H2 657	G	Partition board B		1							
320	R63 2H2 546	G	Drain pan assy		1							
321	R63 5G0 525	G	Drain hose assy		1							
322	R63 2H2 077	G	Pipe cover (Liquid)		1							
323	R63 2H3 668	G	Pipe cover (No.1 Gas)		1							
324	R63 2H3 690	G	Pipe cover (No.2 Gas)		1							
325	R63 2H3 077	G	Pipe cover (Liquid)		1							
326	R63 2H3 694	G	Pipe cover (Gas)		1							
327	R63 2H2 503	G	Sealing (Filter frame)		2							
328	R63 5G2 697	G	Pipe cover (Divider gas)		1							



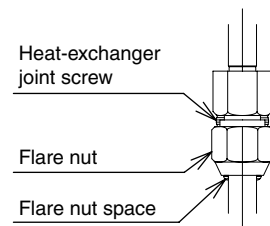
Note :

When installing Liquid-pipe assy. No.416 and No.417, apply Locktight (No.125) to the screw at the Heat-exchanger joint.

After tightening the flare nut by hand, tighten it further with a torque wrench.

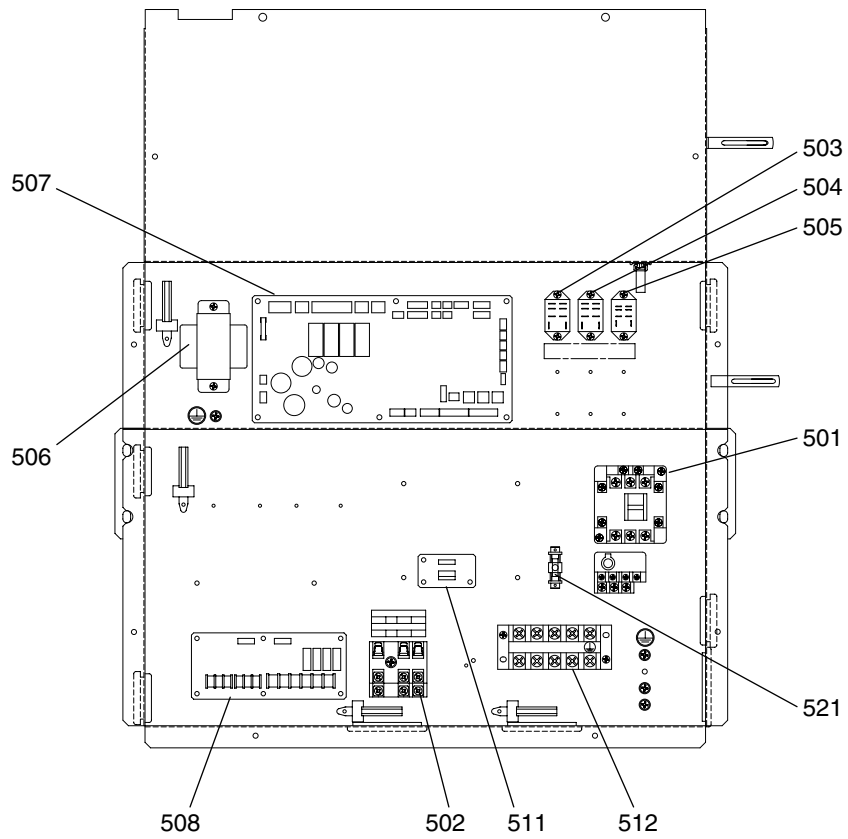
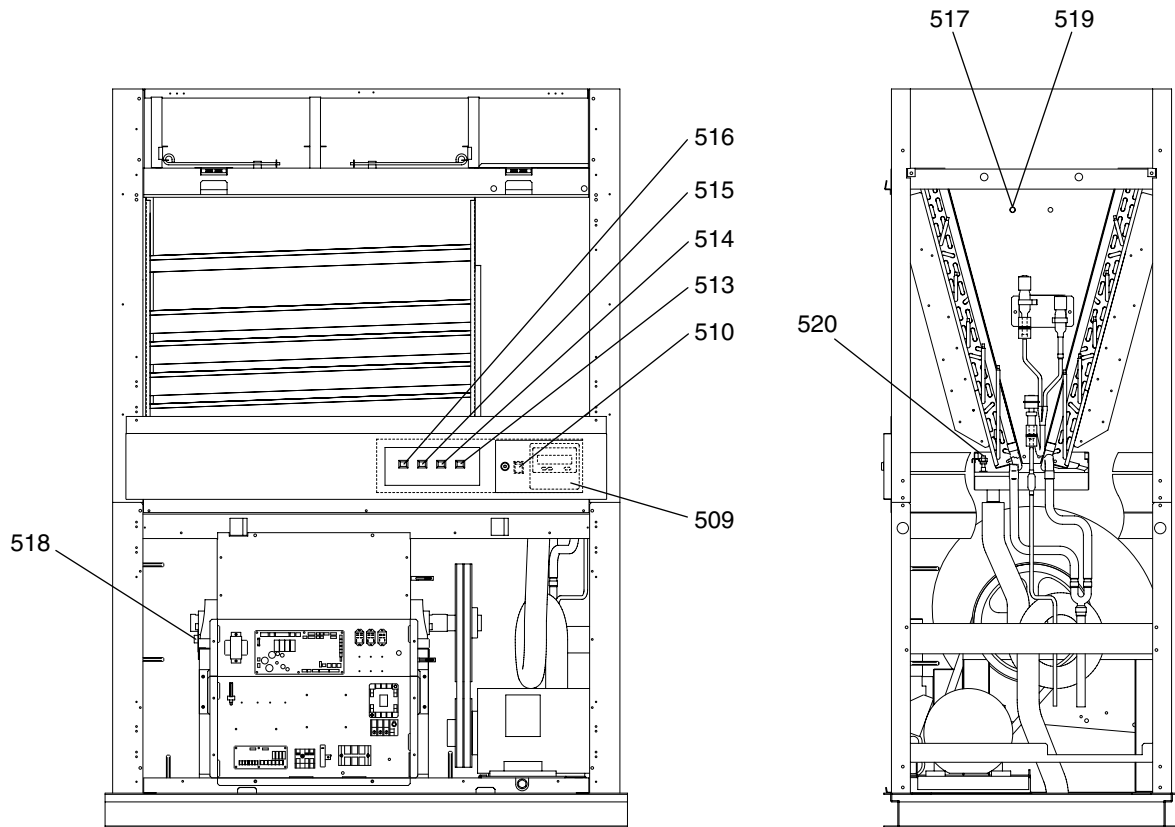
After tightening the flare nut, apply Locktight No.125 to the outside of flare nut and flare nut space as shown below with the arrows.

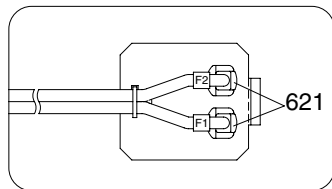
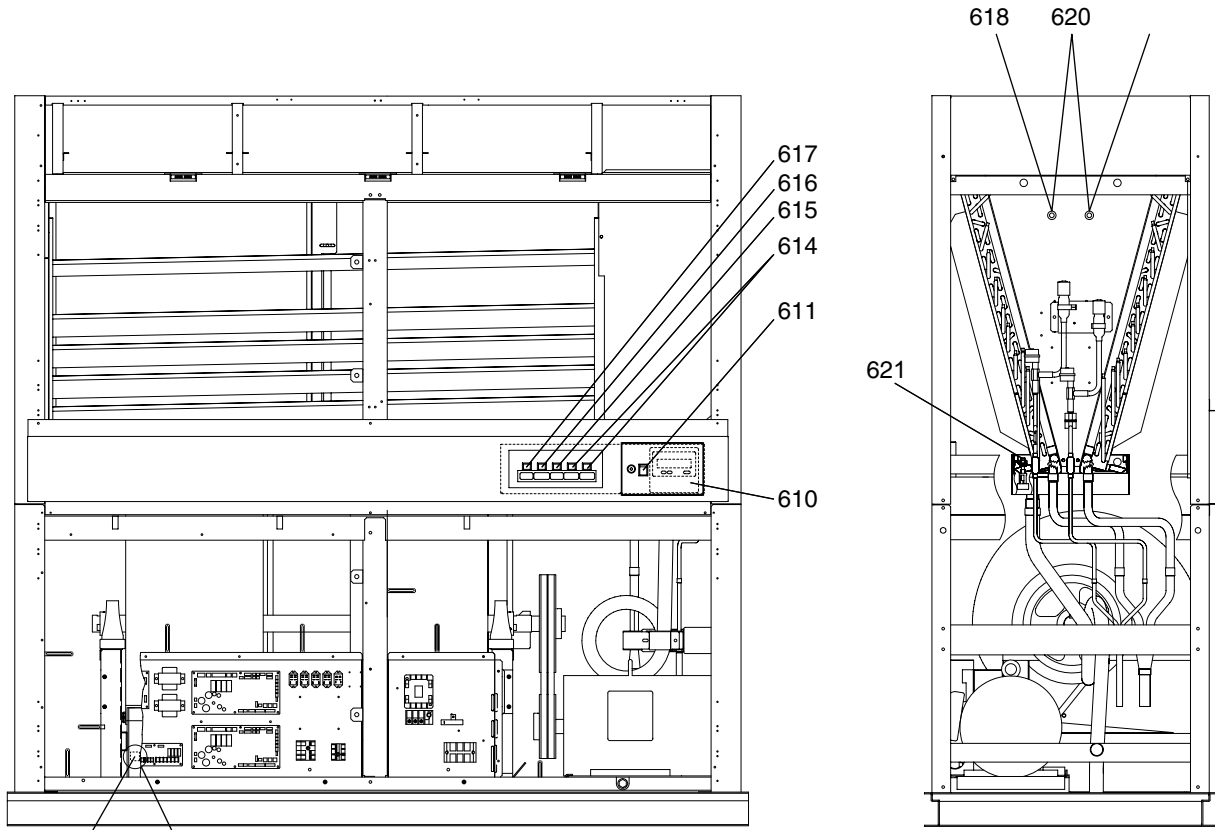
*Tightening Torque $54 \pm 10\% \text{N}\cdot\text{m}$



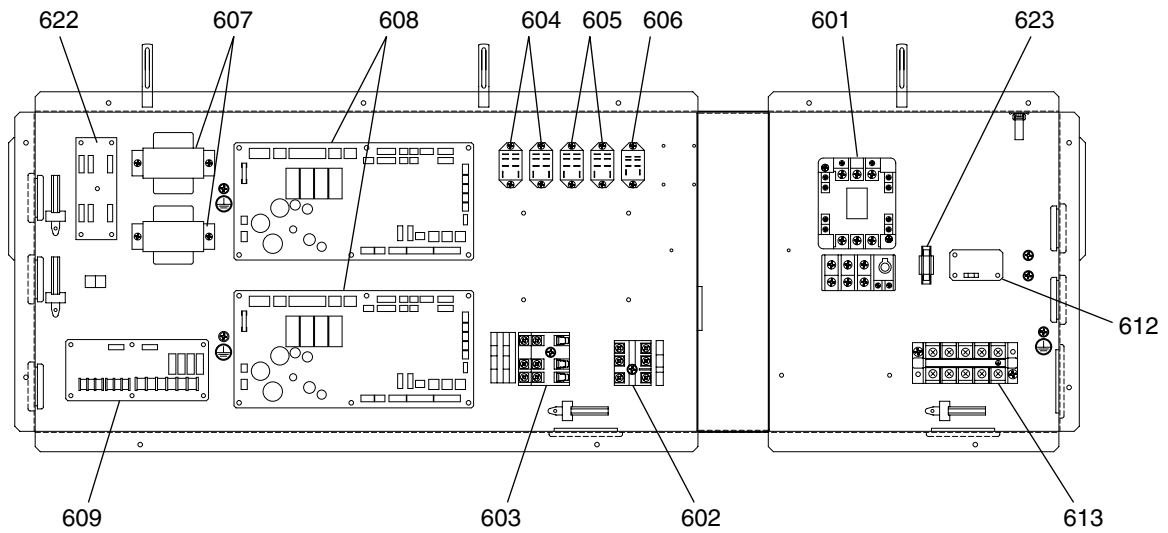
Detailed View of Section B

No.	Part No.	RoHS Compliant : G		Spec.	PFD-P500VM-E						Dwg. No.	Price	Revision History
			Part Name										
401	R63 5G0 100	G	Shaft		1								
402	R61 L42 103	G	Ball bearing unit		2								
403	R63 Y02 109	G	Fan case	39-27	2								
404	R63 N61 114	G	Fan	39-27-45-R	2								
405	R61 N63 108	G	V-pulley	250-B-2-42	1								
406	R63 K03 138	G	Key	12x8x70	1								
407	R61 618 137	G	Key	12x8x90	2								
408	R63 4H0 220	G	Motor SF-JR	3-phase 400V 5.5kW 4P	1								
409	R61 N63 107	G	V-pulley	160-B-2-38	1								
410	R63 K03 137	G	Key	10x8x55	1								
411	R63 5G1 778	G	V-belt RED	B50	2								
412	R63 Y22 667	G	Lamp cover assy		1								
413	R63 Y49 652	G	Panel BM assy		1								
414	R63 5G1 409	G	Heat exchanger assy F		1								
415	R63 5G1 408	G	Heat exchanger assy B		1								
416	R63 5G0 532	G	Liquid pipe assy	LEV1	1								
417	R63 5G0 533	G	Liquid pipe assy	LEV2	1								
418	R63 2H2 667	G	Partition board U-F		1								
419	R63 2H3 667	G	Partition board D-F		1								
420	R63 2H2 657	G	Partition board B		1								
421	R63 5G0 546	G	Drain pan assy		1								
422	R63 Y15 125	G	Beam UC assy		1								
423	R63 Y16 125	G	Beam TC assy		1								
424	R63 5G0 633	G	Beam TC assy		1								
425	R63 5G0 525	G	Drain hose assy		1								
426	R63 5G1 694	G	Pipe cover (No.1 Liquid)		1								
427	R63 5G2 694	G	Pipe cover (No.2 Liquid)		1								
428	R63 5G2 690	G	Pipe cover (No.1 Gas)		1								
429	R63 5G1 697	G	Pipe cover (No.2 Gas)		1								
430	R63 5G3 667	G	Pipe cover (Liquid)		1								
431	R63 5G3 690	G	Pipe cover (Gas)		1								
432	R63 5G2 503	G	Sealing (Filter frame)		2								
433	R63 5G3 694	G	Pipe cover (Divider Liquid)		1								
434	R63 5G2 697	G	Pipe cover (Divider gas)		1								





Detailed View of Section A



No.	Part No.	RoHS Compliant : G		Spec.	PFD-P500VM-E					Dwg. No.	Price	Revision History
		Part Name										
601	R63 Y35 225	G	Contactora	PAK-21JTC	1							
602	R63 Y08 715	G	Terminal block		1							
603	R63 336 246	G	Terminal block		1							
604	R63 925 963	G	Relay LY2F		2							
605	R63 Y07 215	G	Relay LY2F		2							
606	R63 Y08 215	G	Relay LY2ZF		1							
607	R61 Y29 260	G	Transformer		2							
608	R63 Y76 281	G	Control board		2							
609	R63 N66 280	G	PWB assy	YU-80HK	1							
610	R63 Y21 304	G	Controller	PAR-20MAA	1							
611	R63 G95 206	G	Switch	LLK35C59	1							
612	R63 Y30 321	G	DSA board		1							
613	R63 Y05 246	G	Terminal block		1							
614	R63 Y10 217	G	LED (RED)	240V	2							
615	R63 Y11 217	G	LED (ORANGE)	240V	1							
616	R63 Y12 217	G	LED (GREEN)	240V	1							
617	R63 Y13 217	G	LED (WHITE)	240V	1							
618	R63 5G0 201	G	Thermistor assy 1		1							
619	R63 5G0 203	G	Thermistor assy F		1							B
620	R63 729 104	G	Cord bush	KR-51	4							B
621	R63 5G0 541	G	Float switch assy		1							B
622	R63 6E3 281	G	LEV adaptor board		1							B
623	R63 Y02 241	G	Fuse		1							B

