

July 2006

No. OC308

REVISED EDITION-A

# TECHNICAL & SERVICE MANUAL

## Series PCFY Ceiling Suspended R410A / R407C / R22

<Indoor unit>  
[Model name]

PCFY-P40VGM-E

PCFY-P63VGM-E

PCFY-P100VGM-E

PCFY-P125VGM-E

[Service Ref.]

**PCFY-P40VGM-E**  
**PCFY-P63VGM-E**  
**PCFY-P100VGM-E**  
**PCFY-P125VGM-E**

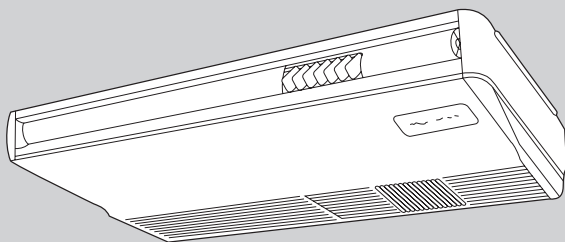
Revision:

- RoHS PARTS LIST is added.
- Some descriptions have been modified.

- Please void OC308.

Note:

- This manual describes only service data of the indoor units.
- RoHS compliant products have <G> mark on the spec name plate.
- For servicing of RoHS compliant products, refer to the RoHS Parts List.

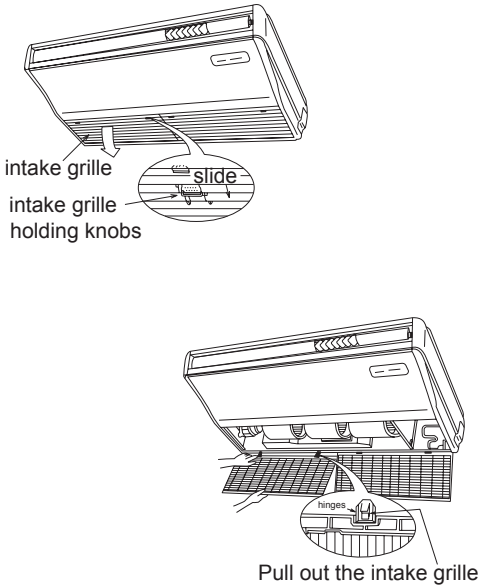
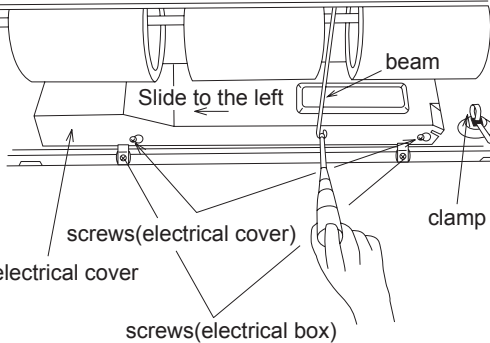
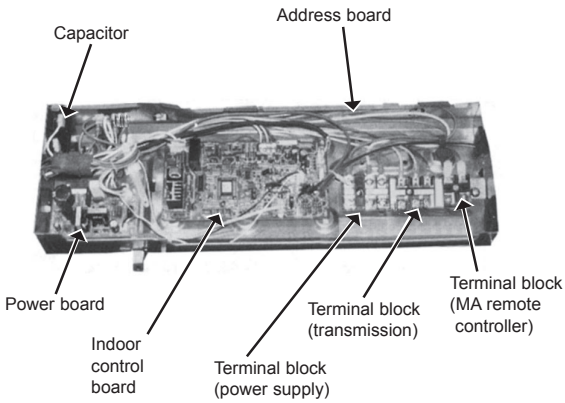


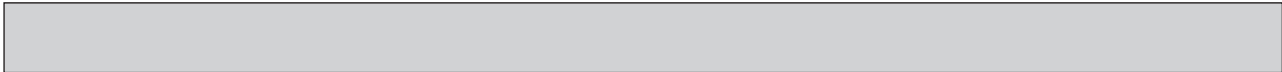
INDOOR UNIT

## CONTENTS

1. SAFETY PRECAUTION .....	2
2. PART NAMES AND FUNCTIONS .....	6
3. SPECIFICATIONS .....	8
4. OUTLINES AND DIMENSIONS .....	11
5. WIRING DIAGRAM .....	15
6. REFRIGERANT SYSTEM DIAGRAM ..	16
7. TROUBLE SHOOTING .....	17
8. DISASSEMBLY PROCEDURE .....	24
9. PARTS LIST .....	28
10. RoHS PARTS LIST .....	35
11. OPTIONAL PARTS .....	42

## PCFY-P40VGM-E PCFY-P63VGM-E PCFY-P100VGM-E PCFY-P125VGM-E

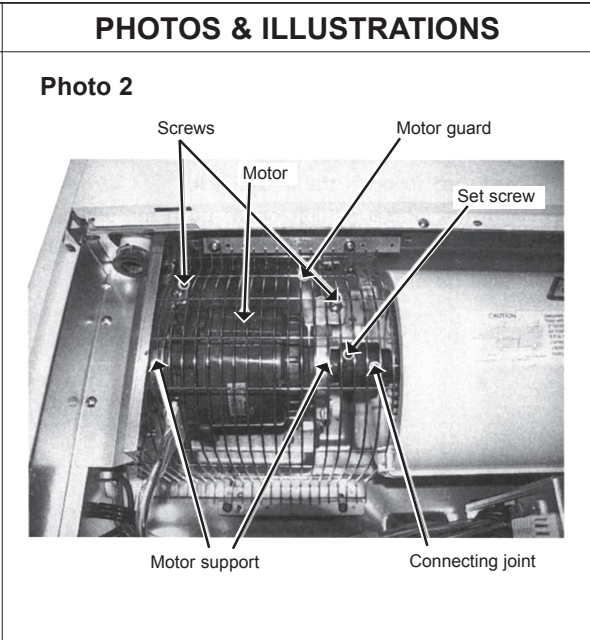
OPERATING PROCEDURE	PHOTOS & ILLUSTRATIONS
<p><b>1. Removing the air intake grille</b></p> <p>(1) Slide the intake grille holding the knobs at backward to open the intake grille.</p> <p>(2) When the intake grille left open, push the stoppers on the rear hinges (at two locations) to pull out the intake grille.</p>	<p><b>Figure 1</b></p> 
<p><b>2. Removing the electrical box</b></p> <p>(1) Remove the air intake grille.</p> <p>(2) Remove the screw from the beam and remove the beam.</p> <p>(3) Remove the screws from the electrical cover, and remove the electrical cover.</p> <p>(4) Disconnect the following wires from the indoor control board.</p> <ul style="list-style-type: none"> <li>• Fan motor : FAN</li> <li>• Vane motor : CN6V</li> <li>• Linear expansion valve : CN60</li> <li>• Room temperature thermistor : CN20</li> <li>• Liquid pipe temperature thermistor : CN21</li> <li>• Gas pipe temperature thermistor : CN29</li> </ul> <p>(5) Remove the screws from the electrical box and pull out the electrical box.</p> <p>&lt;Electrical parts in the electrical box&gt;</p> <ul style="list-style-type: none"> <li>Terminal block (for power supply)</li> <li>Terminal block (for transmission)</li> <li>Terminal block (for MA remote controller)</li> <li>Indoor control board</li> <li>Address board</li> <li>Power board</li> <li>Capacitor</li> </ul>	<p><b>Figure 2</b></p>  <p><b>Photo 1</b></p> 



**OPERATING PROCEDURE**

**3. Removing the fan motor**

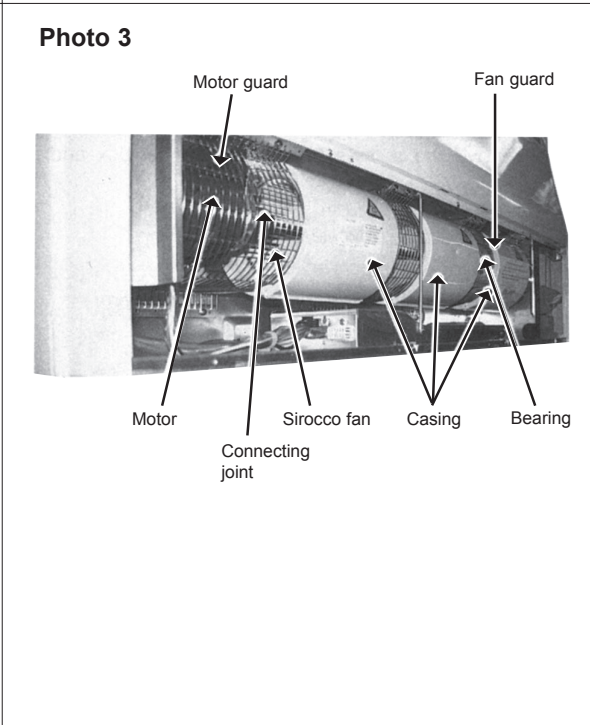
- (1) Remove the air intake grille.
- (2) Disconnect the fan motor guard.
- (3) Unscrew screws for removing the motor guard.
- (4) Unscrew screws for removing the fan guard.
- (5) Remove the screw for removing the motor support at both left and right side.
- (6) Loosen the set screws at the fan motor side of the connecting joint.
- (7) Slide the fan motor to the left side and pull it out.



**4. Removing the sirocco fan**

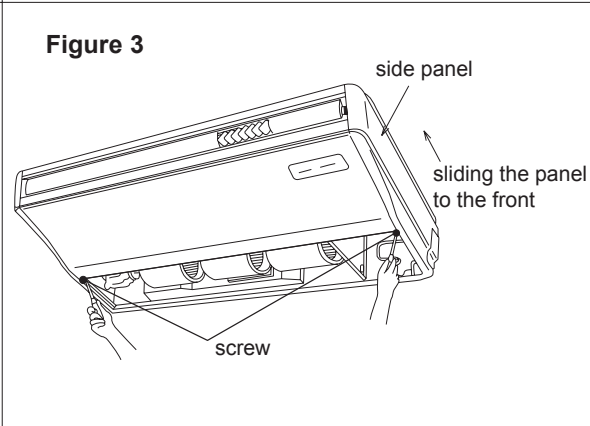
- (1) Remove the air intake grille.
- (2) Remove 1 beam.
- (3) Unscrew screws for removing the motor guard.
- (4) Unscrew screws for removing the fan guard.
- (5) Remove the lower casing while pressing the stoppers at upper side of the casing.
- (6) Loosen the set screws at the connecting joint.
- (7) Remove the sirocco fan and shaft together by sliding the shaft to the left.

(Note)  
Make sure that the upper side casing is snapped to the fan plate securely with catch.



**5. Removing the side panel**

- (1) Remove the air intake grille.
- (2) Remove the screw from the side panel, and remove the side panel by sliding the panel to the front.



## OPERATING PROCEDURE

### 6. Removing the vane motor

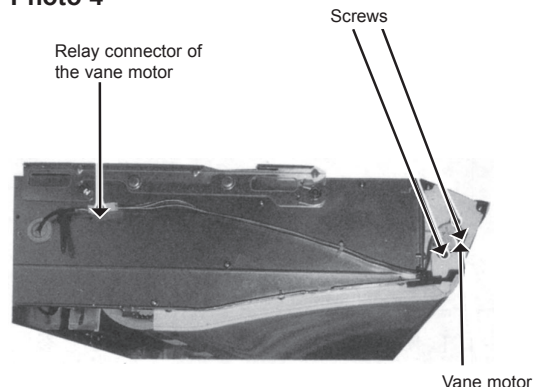
- (1) Remove the air intake.
- (2) Remove the left side panel.
- (3) Remove the relay connector of vane motor.
- (4) Remove the electrical box.
- (5) Remove the screws of vane motor, then remove vane motor.

(Note)

Connect the lead wires and connectors properly and place them in the proper position so that the wires are not pinched by other parts.

## PHOTOS & ILLUSTRATIONS

Photo 4



### 7. Removing the pipe temperature thermistor

- (1) Remove the air intake grille.
- (2) Remove the right side panel.
- (3) Remove the relay connector of the pipe temperature thermistor.
- (4) Remove the screw, and remove the check panel.
- (5) Extract the pipe temperature thermistor from the holder.

<Caution for the installation>

There is a possibility for the short circuit when connector gets wet by water through the thermistor lead wire.

Therefore, lead wire of the pipe temperature thermistor should be trapped as shown in photo 6.

- (6) Gas pipe temperature thermistor is inserted to the holder of the gas pipe (Header)

Photo 5

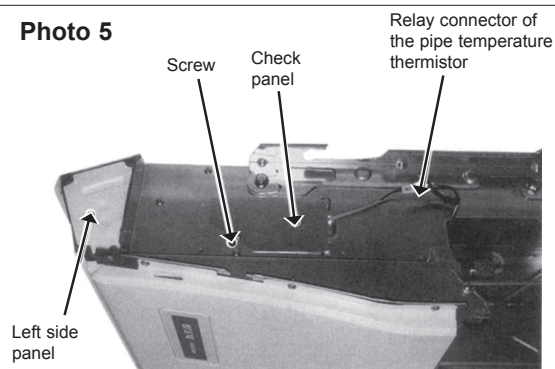


Photo 6

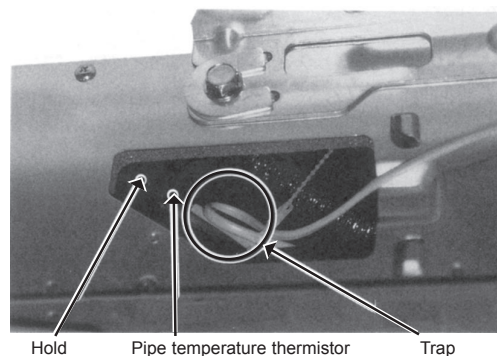
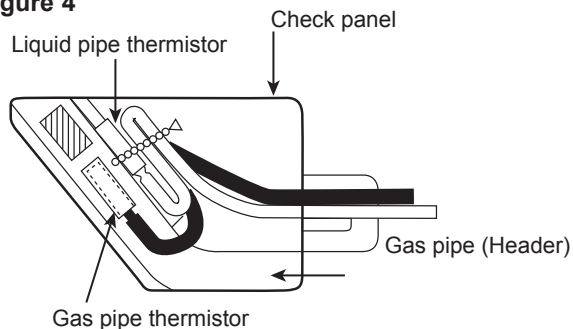


Figure 4

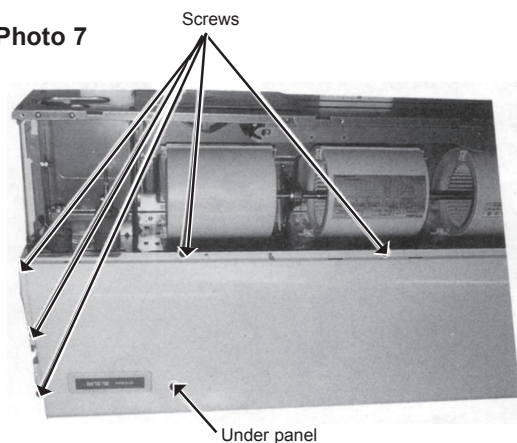


### 8. Removing the under panel

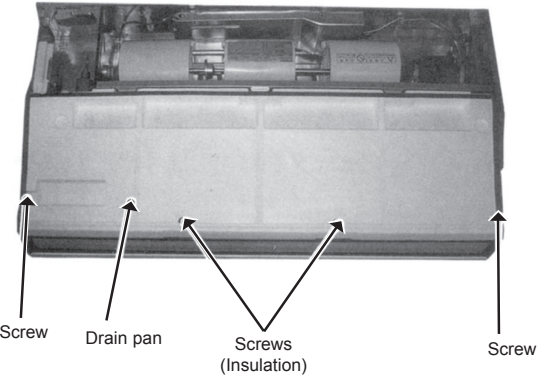
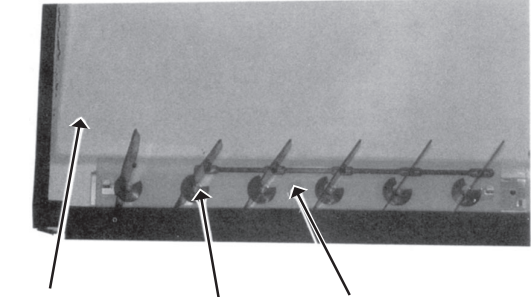
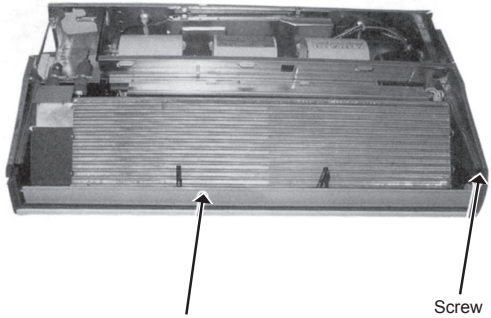
- (1) Remove the air intake grille.
- (2) Remove the beam.
- (3) Remove the side panel (right and left).
- (4) Unscrew the screws of the under panel, then remove the lower panel.

※ Weight of the lower panel : Approx. 2kg.

Photo 7





OPERATING PROCEDURE	PHOTOS & ILLUSTRATIONS
<p><b>9. Removing the drain pan</b></p> <ol style="list-style-type: none"><li>(1) Remove the air intake grille.</li><li>(2) Remove the beam.</li><li>(3) Remove the side panel (right and left).</li><li>(4) Remove the under panel. Remove the screws of the right and left side drain pan.</li><li>(5) Remove the insulation in centre of the drain pan, and after removing the screw, remove the drain pan.</li></ol> <p>(Note) Please aware that there might be drain left in the drain pan when you remove the drain pan.</p>	<p><b>Photo 8</b></p>  <p>Screw    Drain pan    Screws (Insulation)    Screw</p>
<p><b>10. Removing the guide vane</b></p> <ol style="list-style-type: none"><li>(1) Remove the intake grille.</li><li>(2) Remove the beam.</li><li>(3) Remove the side panel (right and left).</li><li>(4) Remove the under panel.</li><li>(5) Remove the drain pan.</li><li>(6) Remove the screw from the guide vane, then remove the guide vane.</li></ol>	<p><b>Photo 9</b></p>  <p>Drain pan    Guide vane    Screw</p>
<p><b>11. Removing the Auto vane</b></p> <ol style="list-style-type: none"><li>(1) Remove the intake grille.</li><li>(2) Remove the left side panel.</li><li>(3) Remove the left side box.</li><li>(4) Remove the under panel.</li><li>(5) Remove the screw from the auto vane.</li><li>(6) Slide the auto vane to the right side and pull the auto vane out.</li></ol>	<p><b>Photo 10</b></p>  <p>Auto vane    Screw</p>

# 9

## PARTS LIST (non-RoHS compliant)

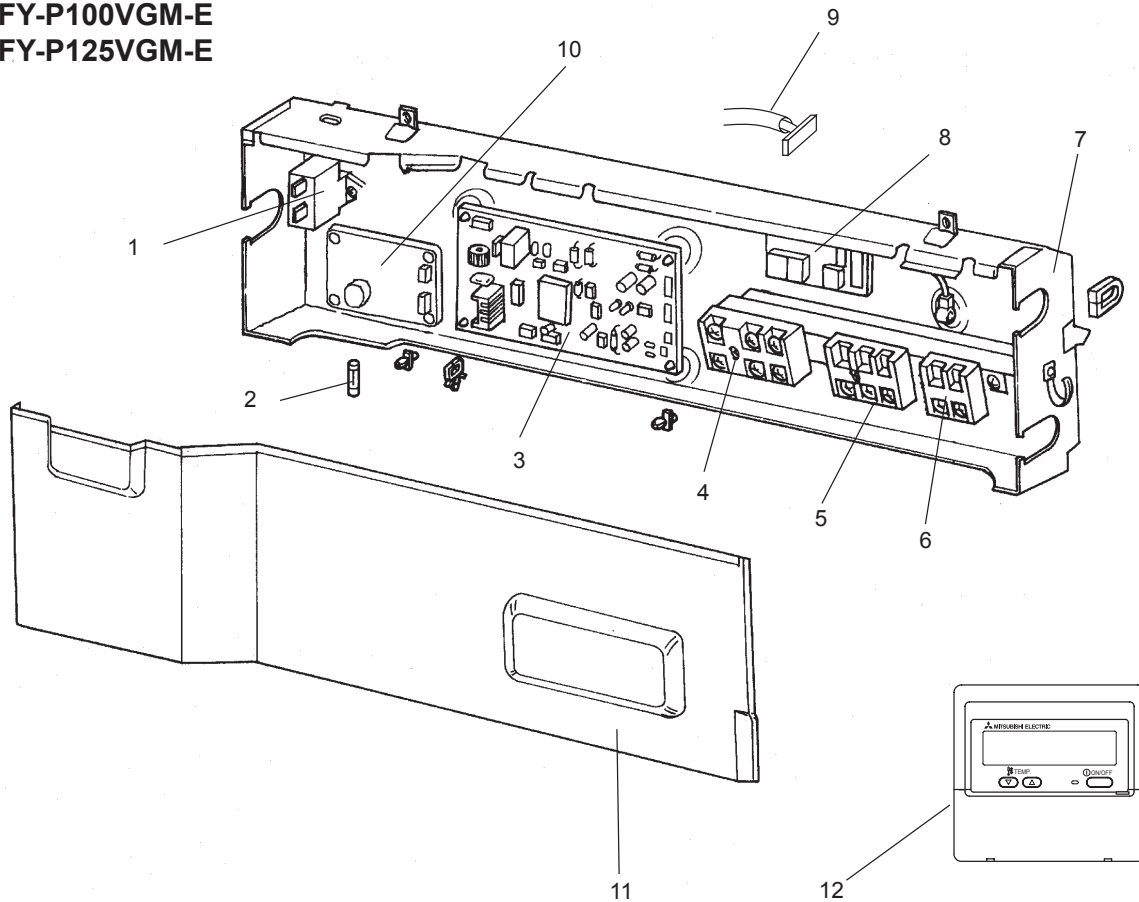
### ELECTRICAL PARTS

PCFY-P40VGM-E

PCFY-P63VGM-E

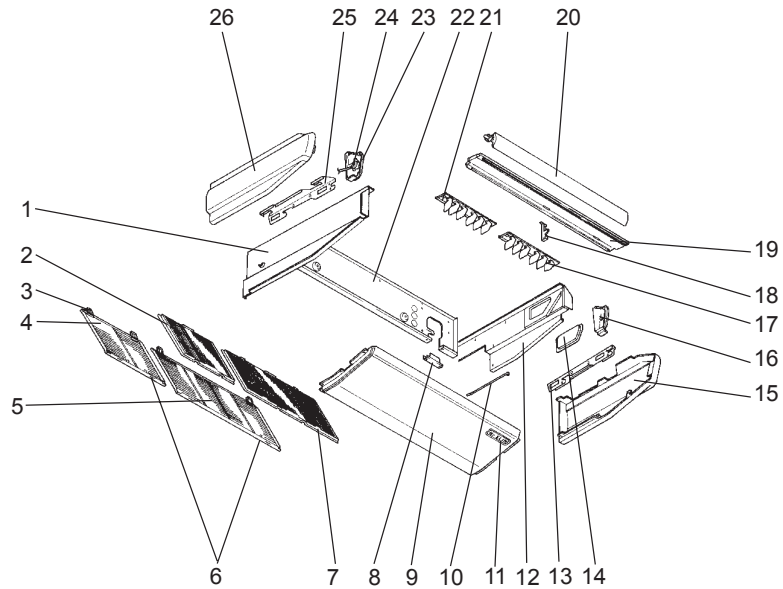
PCFY-P100VGM-E

PCFY-P125VGM-E



No.	Parts No.	Parts Name	Specifications	Q'ty/set				Remarks (Drawing No.)	Wiring Diagram Symbol	Recom- mended Q'ty	Price	
				PCFY - • VGM-E							Unit	Amount
				P40	P63	P100	P125					
1	R01 30L 255	CAPACITOR	3 $\mu$ F 440V	1					C1			
	T7W 39J 255	CAPACITOR	4 $\mu$ F 440V		1	1			C1			
	R01 A13 255	CAPACITOR	6 $\mu$ F 440V				1		C1			
2	T7W 520 239	FUSE	250V 6.3A	1	1	1	1					
3	T7W E34 310	INDOOR CONTROLLER BOARD		1	1	1	1		I.B			
4	T7W A14 716	TERMINAL BLOCK	3P(L,N,⊕)	1	1	1	1		TB2			
5	T7W E00 716	TERMINAL BLOCK	3P(M1,M2,S)	1	1	1	1		TB5			
6	T7W 515 716	TERMINAL BLOCK	2P(1,2)	1	1	1	1		TB15			
7	—	CONTROL BOX		1	1	1	1	(BG00N015G31)				
8	T7W B01 294	ADDRESS BOARD		1	1	1	1		A.B			
9	R01 05A 304	ADDRESS CABLE		1	1	1	1					
10	R01 E02 313	POWER BOARD		1	1	1	1		P.B			
11	—	BOX COVER		1				(BG02A804G20)				
	—	BOX COVER			1		1	(BG02A804G21)				
	—	BOX COVER				1		(BG02A804G22)				
12	—	REMOTE CONTROLLER	PAR-21MAA	1	1	1	1					

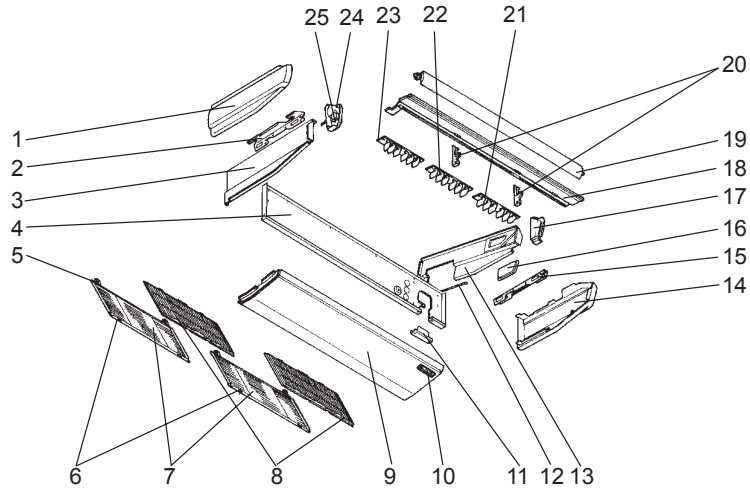
**STRUCTURAL PART  
PCFY-P40VGM-E**



Part number that is circled is not shown in the figure.

No.	Parts No.	Parts Name	Specifications	Q'ty/set PCFY- P40VGM-E	Remarks (Drawing No.)	Wiring Diagram Symbol	Recom- mended Q'ty	Price	
								Unit	Amount
1	R01 57N 666	S.PLATE-L		1					
2	R01 A15 500	L.L FILTER		1					
3	R01 17J 061	GRILLE HINGE		4					
4	R01 18J 691	GRILLE ASSY		1					
5	R01 17J 691	GRILLE ASSY		1					
6	R01 17J 054	GRILLE CATCH		4					
7	R01 A14 500	L.L FILTER		1					
8	—	REAR SUPPORT		1	(BG02H454K01)				
9	R01 17J 669	UNDER PANEL		1					
10	—	BEAM(GA)		2	(BG17H464H08)				
11	T7W E00 070	W.BOARD CASE		1					
12	R01 18J 665	S.PLATE-R		1					
13	R01 17J 808	RIGHT LEG (R)		1					
14	R01 17J 668	SERVICE PANEL		1					
15	R01 17J 661	RIGHT SIDE PANEL		1					
16	R01 17J 067	RIGHT SIDE BOX		1					
17	R01 17J 085	G.V ASSY-6R		1					
18	—	VANE SUPPORT		1	(BG02R321G07)				
19	R01 17J 651	FRONT PANEL		1					
20	R01 17J 002	AUTO VANE		1					
21	R01 18J 086	G.V ASSY-6L		1					
22	R01 A14 676	REAR PANEL		1					
23	R01 17J 068	LEFT SIDE BOX		1					
24	R01 E03 223	VANE MOTOR		1		MV			
25	R01 17J 809	LEFT LEG (L)		1					
26	R01 17J 662	LEFT SIDE PANEL		1					
②7	R01 17J 523	JOINT SOCKET		1					

**STRUCTURAL PART**  
**PCFY-P63VGM-E**  
**PCFY-P100VGM-E**

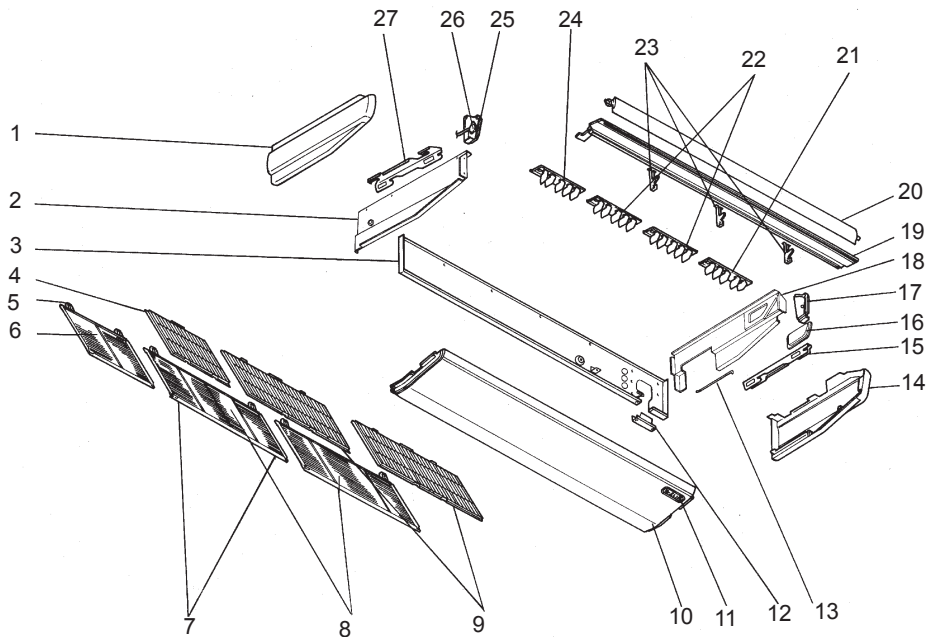


Part number that is circled is not show in the figure.

No.	Parts No.	Parts Name	Specifications	Q'ty/set		Remarks (Drawing No.)	Wiring Diagram Symbol	Recom- mended Q'ty	Price	
				PCFY- P63	VGM-E P100				Unit	Amount
1	R01 17J 662	LEFT SIDE PANEL		1						
	R01 35J 662	LEFT SIDE PANEL			1					
2	R01 17J 809	LEFT LEG		1	1					
3	R01 57N 666	S.PLATE-L		1						
	R01 35J 666	S.PLATE-L			1					
4	R01 A15 676	REAR PANEL		1						
	R01 A16 676	REAR PANEL			1					
5	R01 17J 061	GRILLE HINGE		4	4					
6	R01 17J 054	GRILLE CATCH		4	4					
7	R01 17J 691	GRILLE ASSY		2	2					
8	R01 A14 500	L.L FILTER		2	2					
9	R01 29J 669	UNDER PANEL		1	1					
10	T7W E00 070	W.BOARD CASE		1	1					
11	—	REAR SUPPORT		1	1	(BG02H454K01)				
12	—	BEAM (GA)		2	2	(BG17H464H08)				
13	R01 18J 665	S.PLATE-R		1						
	R01 E00 665	S.PLATE-R			1					
14	R01 17J 661	RIGHT SIDE PANEL		1						
	R01 35J 661	RIGHT SIDE PANEL			1					
15	R01 17J 808	RIGHT LEG		1	1					
16	R01 17J 668	SERVICE PANEL		1						
	R01 18J 668	SERVICE PANEL			1					
17	R01 17J 067	RIGHT SIDE BOX		1						
	R01 35J 067	RIGHT SIDE BOX			1					
18	R01 29J 651	FRONT PANEL		1						
	R01 36J 651	FRONT PANEL			1					
19	R01 29J 002	AUTO VANE		1						
	R01 E03 002	AUTO VANE			1					
20	—	VANE SUPPORT		2		(BG02R321G07)				
	—	VANE SUPPORT			2	(BG02R805G05)				
21	R01 17J 085	G.V ASSY-6R		1						
	R01 37J 085	G.V ASSY-6R			1					
22	R01 29J 087	G.V ASSY-6C		1						
	R01 37J 087	G.V ASSY-6C			1					
23	R01 18J 086	G.V ASSY-6L		1						
	R01 37J 086	G.V ASSY-6L			1					
24	R01 17J 068	LEFT SIDE BOX		1						
	R01 E00 068	LEFT SIDE BOX			1					
25	R01 29J 223	VANE MOTOR		1			MV			
	R01 35J 223	VANE MOTOR			1		MV			
26	R01 17J 523	JOINT SOCKET		1	1					



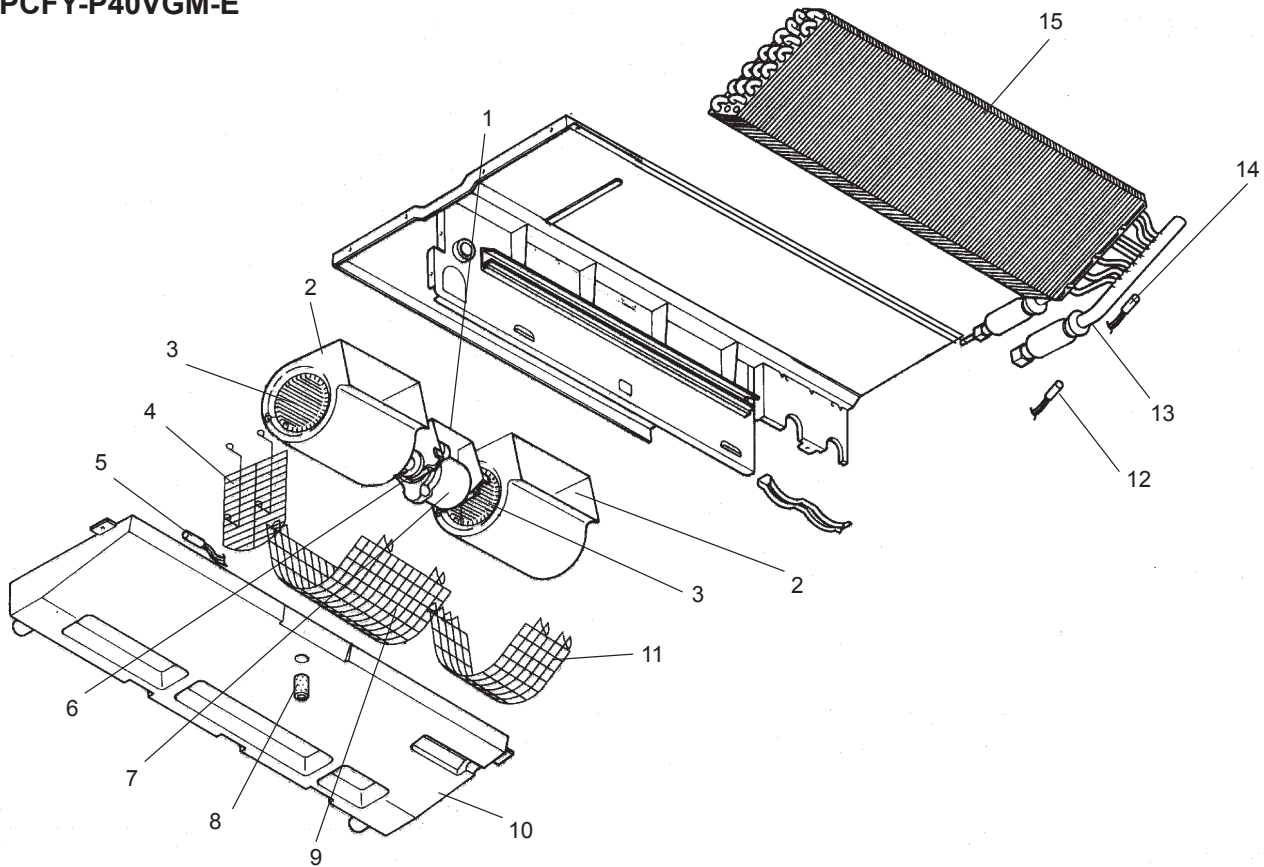
**STRUCTURAL PART  
PCFY-P125VGM-E**



Part number that is circled is not shown in the figure.

No.	Parts No.	Parts Name	Specifications	Q'ty/set	Remarks (Drawing No.)	Wiring Diagram Symbol	Recom- mended Q'ty	Price	
				PCFY- P125VGM-E				Unit	Amount
1	R01 35J 662	LEFT SIDE PANEL		1					
2	R01 35J 666	S.PLATE-L		1					
3	R01 A17 676	REAR PANEL		1					
4	R01 A15 500	L.L FILTER		1					
5	R01 17J 061	GRILLE HINGE		6					
6	R01 18J 691	GRILLE ASSY		1					
7	R01 17J 054	GRILLE CATCH		6					
8	R01 17J 691	GRILLE ASSY		2					
9	R01 A14 500	L.L FILTER		2					
10	R01 41J 669	UNDER PANEL		1					
11	T7W E00 070	W.BOARD CASE		1					
12	—	REAR SUPPORT		1	(BG02H454K01)				
13	—	BEAM(GA)		3	(BG17H464H08)				
14	R01 35J 661	RIGHT SIDE PANEL		1					
15	R01 17J 808	RIGHT LEG		1					
16	R01 18J 668	SERVICE PANEL		1					
17	R01 35J 067	RIGHT SIDE BOX		1					
18	R01 E00 665	S.PLATE-R		1					
19	R01 41J 651	FRONT PANEL		1					
20	R01 E04 002	AUTO VANE		1					
21	R01 41J 085	G.V ASSY-5R		1					
22	R01 43J 087	G.V ASSY-5C		2					
23	—	VANE SUPPORT		3	(BG02R805G05)				
24	R01 42J 086	G.V ASSY-5L		1					
25	R01 E00 068	LEFT SIDE BOX		1					
26	R01 35J 223	VANE MOTOR		1		MV			
27	R01 17J 809	LEFT LEG		1					
28	R01 17J 523	JOINT SOCKET		1					

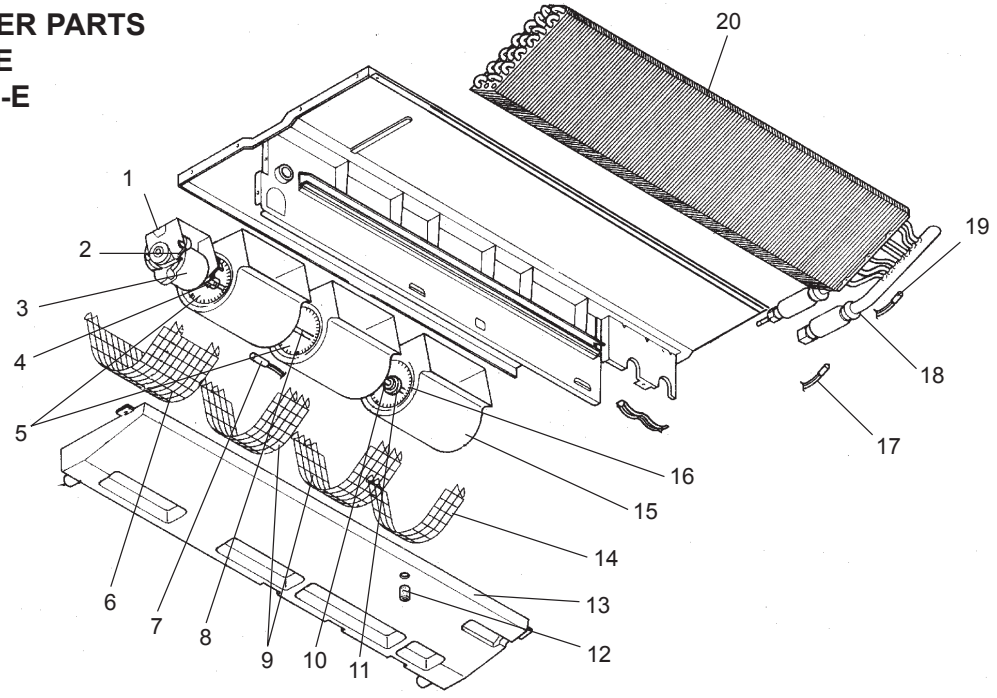
## FAN AND HEATER PARTS PCFY-P40VGM-E



Part number that is circled is not shown in the figure.

No.	Parts No.	Parts Name	Specifications	Q'ty/set	Remarks (Drawing No.)	Wiring Diagram Symbol	Recom- mended Q'ty	Price	
				PCFY- P40VGM-E				Unit	Amount
1	R01 17J 130	MOTOR LEG		1					
2	T7W B06 110	CASING		2					
3	R01 17J 114	SIROCCO FAN		2					
4	T7W 19J 675	FAN GUARD		1					
5	R01 E26 202	ROOM TEMPERATURE THERMISTOR		1		TH21			
6	R01 43E 126	PIECE (MOTOR)		1	2pcs/set				
7	T7W 23J 762	FAN MOTOR	D09B4P54MS	1		MF			
8	R01 17J 524	DRAIN PLUG		1					
9	T7W 17J 675	FAN GUARD		1					
10	R01 A14 529	DRAIN PAN ASSY		1					
11	T7W 18J 675	FAN GUARD		1					
12	R01 E27 202	LIQUID PIPE TEMPERATURE THERMISTOR		1		TH22			
13	R01 E60 401	LINEAR EXPANSION VALVE		1		LEV			
14	R01 17J 202	GAS PIPE TEMPERATURE THERMISTOR		1		TH23			
15	R01 H47 480	HEAT EXCHANGER		1					
16	T7W E00 072	DRAIN HOSE COVER		1					

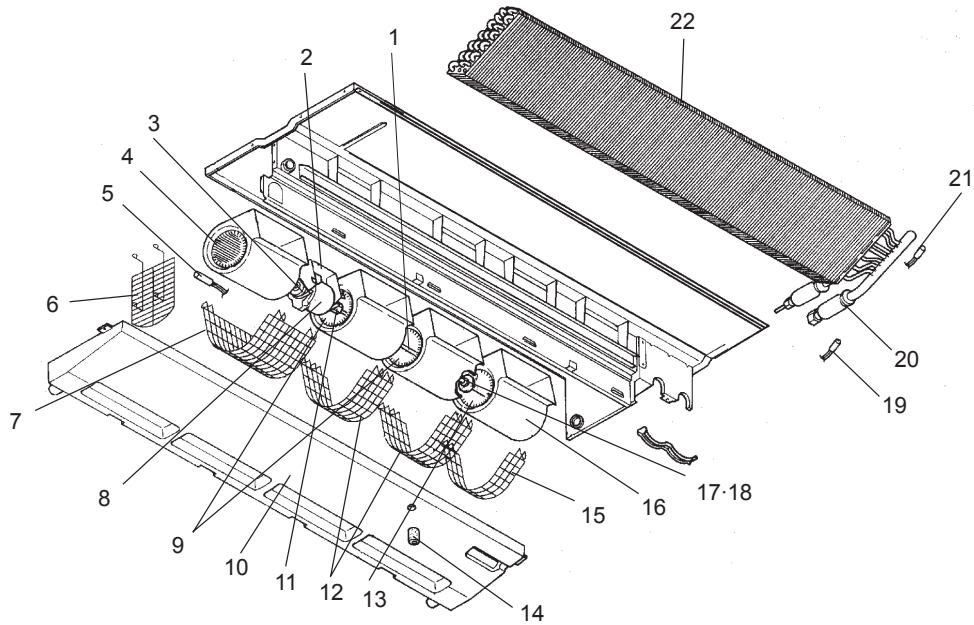
**FAN AND HEATER PARTS**  
**PCFY-P63VGM-E**  
**PCFY-P100VGM-E**



Part number that is circled is not shown in the figure.

No.	Parts No.	Parts Name	Specifications	Q'ty/set		Remarks (Drawing No.)	Wiring Diagram Symbol	Recom- mended Q'ty	Price	
				P63	P100				Unit	Amount
1	R01 29J 130	MOTOR LEG		1						
	R01 35J 130	MOTOR LEG			1					
2	R01 43E 126	PIECE(MOTOR)		1	1	2pcs/set				
3	T7W 30J 762	FAN MOTOR	D09C4P70MS	1			MF			
	T7W 39J 762	FAN MOTOR	D10B4P90MS		1		MF			
4	R01 700 116	FAN JOINT		1	1					
5	R01 29J 114	SIROCCO FAN		2						
	R01 35J 114	SIROCCO FAN			2					
6	T7W 20J 675	FAN GUARD		1						
	T7W 22J 675	FAN GUARD			1					
7	R01 E26 202	ROOM TEMPERATURE THERMISTOR		1	1		TH21			
8	R01 29J 100	SHAFT		1	1					
9	T7W 21J 675	FAN GUARD		2						
	T7W 23J 675	FAN GUARD			2					
10	R01 E00 103	SLEEVE BEARING		1	1					
11	R01 29J 145	BEARING SUPPORT		1						
	R01 35J 145	BEARING SUPPORT			1					
12	R01 17J 524	DRAIN PLUG		1	1					
13	R01 A15 529	DRAIN PAN ASSY		1						
	R01 A16 529	DRAIN PAN ASSY			1					
14	T7W 18J 675	FAN GUARD		1						
	T7W 24J 675	FAN GUARD			1					
15	T7W B06 110	CASING		3						
	T7W B07 110	CASING			3					
16	R01 33J 114	SIROCCO FAN		1						
	R01 39J 114	SIROCCO FAN			1					
17	R01 E27 202	LIQUID PIPE TEMPERATURE THERMISTOR		1	1		TH22			
18	R01 E60 401	LINEAR EXPANSION VALVE		1			LEV			
	R01 E61 401	LINEAR EXPANSION VALVE			1		LEV			
19	R01 17J 202	GAS PIPE TEMPERATURE THERMISTOR		1	1		TH23			
20	R01 H49 480	HEAT EXCHANGER		1						
	R01 H52 480	HEAT EXCHANGER			1					
21	T7W E00 072	DRAIN HOSE COVER		1	1					

## FAN AND HEATER PARTS PCFY-P125VGM-E



Part number that is circled is not shown in the figure.

No.	Parts No.	Parts Name	Specifications	Q'ty/set	Remarks (Drawing No.)	Wiring Diagram Symbol	Recom- mended Q'ty	Price	
				PCFY- P125VGM-E				Unit	Amount
1	R01 29J 100	SHAFT		1					
2	R01 41J 130	MOTOR LEG		1					
3	R01 43E 126	PIECE (MOTOR)		1	2pcs/set				
4	R01 41J 114	SIROCCO FAN		1					
5	R01 E26 202	ROOM TEMPERATURE THERMISTOR		1		TH21			
6	T7W 26J 675	FAN GUARD		1					
7	T7W 25J 675	FAN GUARD		1					
8	T7W 43J 762	FAN MOTOR	D10B4P150MS	1		MF			
9	R01 35J 114	SIROCCO FAN		2					
10	R01 A17 529	DRAIN PAN ASSY		1					
11	R01 700 116	FAN JOINT		1					
12	T7W 23J 675	FAN GUARD		2					
13	R01 39J 114	SIROCCO FAN		1					
14	R01 17J 524	DRAIN PLUG		1					
15	T7W 24J 675	FAN GUARD		1					
16	T7W B07 110	CASING		4					
17	R01 E00 103	SLEEVE BEARING		1					
18	R01 35J 145	BEARING SUPPORT		1					
19	R01 E27 202	LIQUID PIPE TEMPERATURE THERMISTOR		1		TH22			
20	R01 E61 401	LINEAR EXPANSION VALVE		1		LEV			
21	R01 17J 202	GAS PIPE TEMPERATURE THERMISTOR		1		TH23			
22	R01 H53 480	HEAT EXCHANGER		1					
23	T7W E00 072	DRAIN HOSE COVER		1					

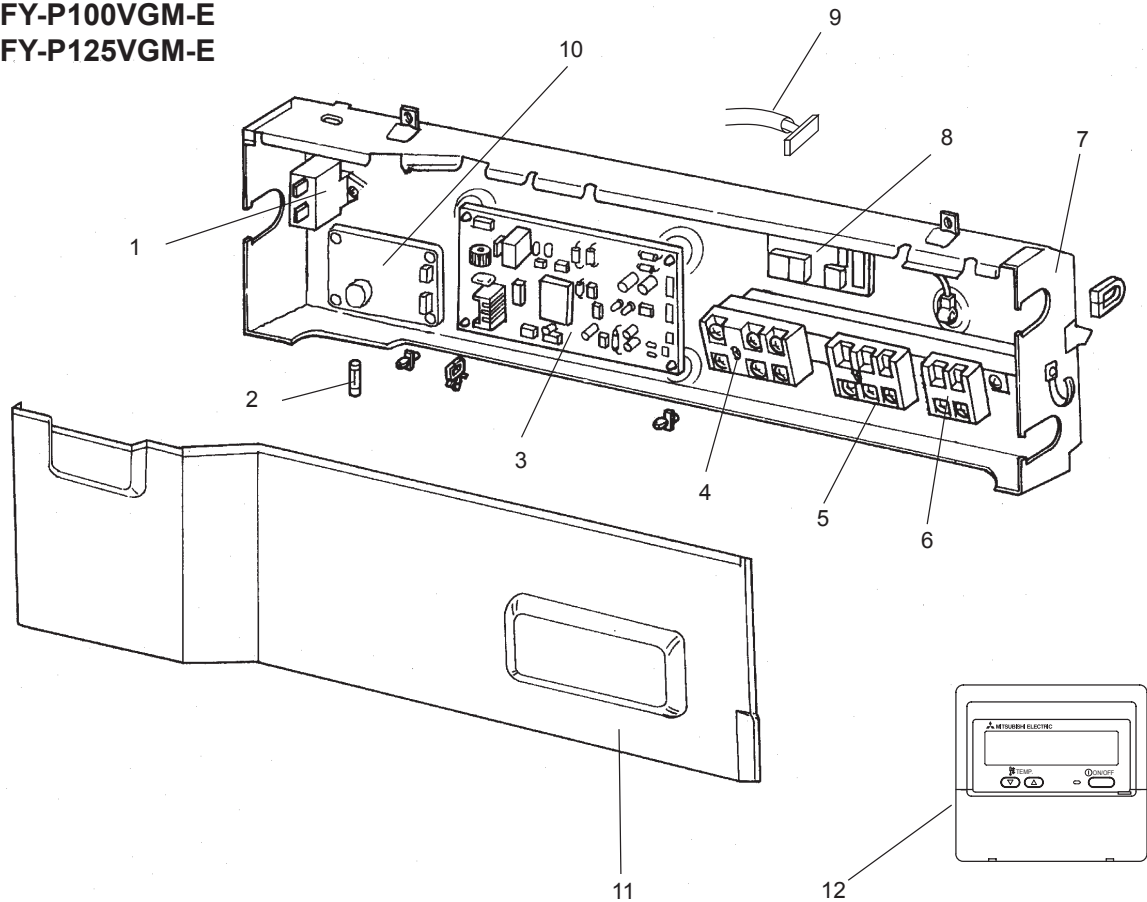
## ELECTRICAL PARTS

PCFY-P40VGM-E

PCFY-P63VGM-E

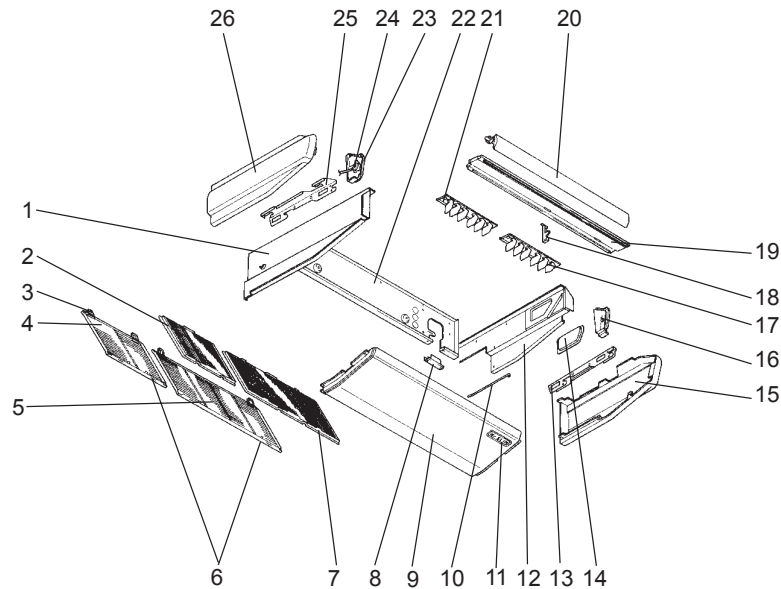
PCFY-P100VGM-E

PCFY-P125VGM-E



No.	RoHS	Parts No.	Parts Name	Specifications	Q'ty/set				Remarks (Drawing No.)	Wiring Diagram Symbol	Recom- mended Q'ty	Price	
					PCFY- • VGM-E							Unit	Amount
					P40	P63	P100	P125					
1	G	R01 A15 255	CAPACITOR	3 $\mu$ F 440V	1					C1			
	G	T7W E13 255	CAPACITOR	4 $\mu$ F 440V		1	1			C1			
	G	R01 A14 255	CAPACITOR	6 $\mu$ F 440V				1		C1			
2	G	R01 E06 239	FUSE	250V 6.3A	1	1	1	1					
3	G	T7W E53 310	INDOOR CONTROLLER BOARD		1	1	1	1		I.B			
4	G	T7W E32 716	TERMINAL BLOCK	3P(L,N,⊕)	1	1	1	1		TB2			
5	G	T7W E35 716	TERMINAL BLOCK	3P(M1,M2,S)	1	1	1	1		TB5			
6	G	T7W E36 716	TERMINAL BLOCK	2P(1,2)	1	1	1	1		TB15			
7	G	—	CONTROL BOX		1	1	1	1	(BG00N015G31)				
8	G	T7W E01 294	ADDRESS BOARD		1	1	1	1		A.B			
9	G	R01 A01 304	ADDRESS CABLE		1	1	1	1					
10	G	R01 E38 313	POWER BOARD		1	1	1	1		P.B			
11	G	—	BOX COVER		1				(BG02A804G20)				
	G	—	BOX COVER			1		1	(BG02A804G21)				
	G	—	BOX COVER				1		(BG02A804G22)				
12	G	—	REMOTE CONTROLLER	PAR-21MAA	1	1	1	1					

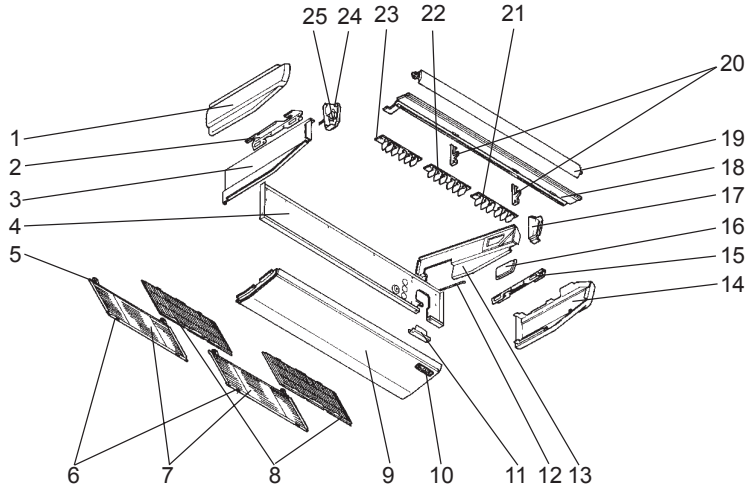
**STRUCTURAL PART**  
**PCFY-P40VGM-E**



Part number that is circled is not shown in the figure.

No.	RoHS	Parts No.	Parts Name	Specifications	Q'ty/set	Remarks (Drawing No.)	Wiring Diagram Symbol	Recom- mended Q'ty	Price	
					PCFY- P40VGM-E				Unit	Amount
1	G	R01 E00 666	S.PLATE-L		1					
2	G	R01 A30 500	L.L FILTER		1					
3	G	R01 18J 061	GRILLE HINGE		4					
4	G	R01 20J 691	GRILLE ASSY		1					
5	G	R01 19J 691	GRILLE ASSY		1					
6	G	R01 19J 054	GRILLE CATCH		4					
7	G	R01 A29 500	L.L FILTER		1					
8	G	—	REAR SUPPORT		1	(BG02H454K01)				
9	G	R01 31J 669	UNDER PANEL		1					
10	G	—	BEAM(GA)		2	(BG17H464H08)				
11	G	T7W E03 070	W.BOARD CASE		1					
12	G	R01 19J 665	S.PLATE-R		1					
13	G	R01 18J 808	RIGHT LEG (R)		1					
14	G	R01 19J 668	SERVICE PANEL		1					
15	G	R01 18J 661	RIGHT SIDE PANEL		1					
16	G	R01 18J 067	RIGHT SIDE BOX		1					
17	G	R01 40J 085	G.V ASSY-6R		1					
18	G	—	VANE SUPPORT		1	(BG02R321G07)				
19	G	R01 37J 651	FRONT PANEL		1					
20	G	R01 31J 002	AUTO VANE		1					
21	G	R01 40J 086	G.V ASSY-6L		1					
22	G	R01 A18 676	REAR PANEL		1					
23	G	R01 18J 068	LEFT SIDE BOX		1					
24	G	R01 E11 223	VANE MOTOR		1		MV			
25	G	R01 18J 809	LEFT LEG (L)		1					
26	G	R01 18J 662	LEFT SIDE PANEL		1					
27	G	R01 18J 523	JOINT SOCKET		1					

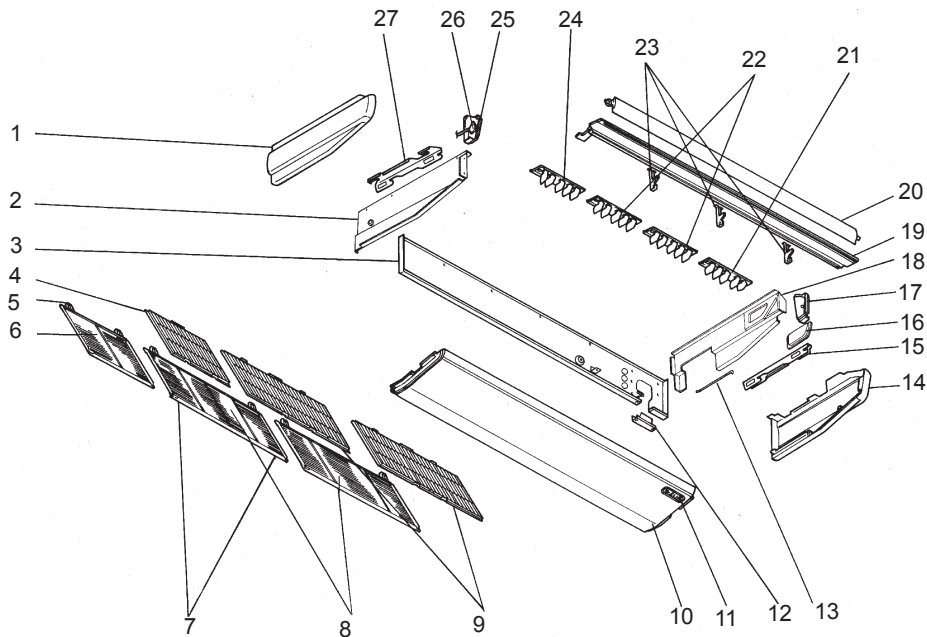
**STRUCTURAL PART**  
**PCFY-P63VGM-E**  
**PCFY-P100VGM-E**



Part number that is circled is not show in the figure.

No.	RoHS	Parts No.	Parts Name	Specifications	Q'ty/set		Remarks (Drawing No.)	Wiring Diagram Symbol	Recom- mended Q'ty	Price	
					PCFY- P63	VGM-E P100				Unit	Amount
1	G	R01 18J 662	LEFT SIDE PANEL		1						
	G	R01 36J 662	LEFT SIDE PANEL			1					
2	G	R01 18J 809	LEFT LEG		1	1					
3	G	R01 E00 666	S.PLATE-L		1						
	G	R01 E01 666	S.PLATE-L			1					
4	G	R01 30J 676	REAR PANEL		1						
	G	R01 A21 676	REAR PANEL			1					
5	G	R01 18J 061	GRILLE HINGE		4	4					
6	G	R01 19J 054	GRILLE CATCH		4	4					
7	G	R01 19J 691	GRILLE ASSY		2	2					
8	G	R01 A29 500	L.L FILTER		2	2					
9	G	R01 30J 669	UNDER PANEL		1	1					
10	G	T7W E03 070	W.BOARD CASE		1	1					
11		—	REAR SUPPORT		1	1	(BG02H454K01)				
12		—	BEAM (GA)		2	2	(BG17H464H08)				
13	G	R01 19J 665	S.PLATE-R		1						
	G	R01 E01 665	S.PLATE-R			1					
14	G	R01 18J 661	RIGHT SIDE PANEL		1						
	G	R01 36J 661	RIGHT SIDE PANEL			1					
15	G	R01 18J 808	RIGHT LEG		1	1					
16	G	R01 19J 668	SERVICE PANEL		1						
	G	R01 20J 668	SERVICE PANEL			1					
17	G	R01 18J 067	RIGHT SIDE BOX		1						
	G	R01 36J 067	RIGHT SIDE BOX			1					
18	G	R01 30J 651	FRONT PANEL		1						
	G	R01 38J 651	FRONT PANEL			1					
19	G	R01 30J 002	AUTO VANE		1						
	G	R01 E14 002	AUTO VANE			1					
20		—	VANE SUPPORT		2		(BG02R321G07)				
		—	VANE SUPPORT			2	(BG02R805G05)				
21	G	R01 40J 085	G.V ASSY-6R		1						
	G	R01 38J 085	G.V ASSY-6R			1					
22	G	R01 40J 087	G.V ASSY-6C		1						
	G	R01 38J 087	G.V ASSY-6C			1					
23	G	R01 40J 086	G.V ASSY-6L		1						
	G	R01 38J 086	G.V ASSY-6L			1					
24	G	R01 18J 068	LEFT SIDE BOX		1						
	G	R01 E01 068	LEFT SIDE BOX			1					
25	G	R01 E10 223	VANE MOTOR		1			MV			
	G	R01 E12 223	VANE MOTOR			1		MV			
26	G	R01 18J 523	JOINT SOCKET		1	1					

**STRUCTURAL PART**  
**PCFY-P125VGM-E**

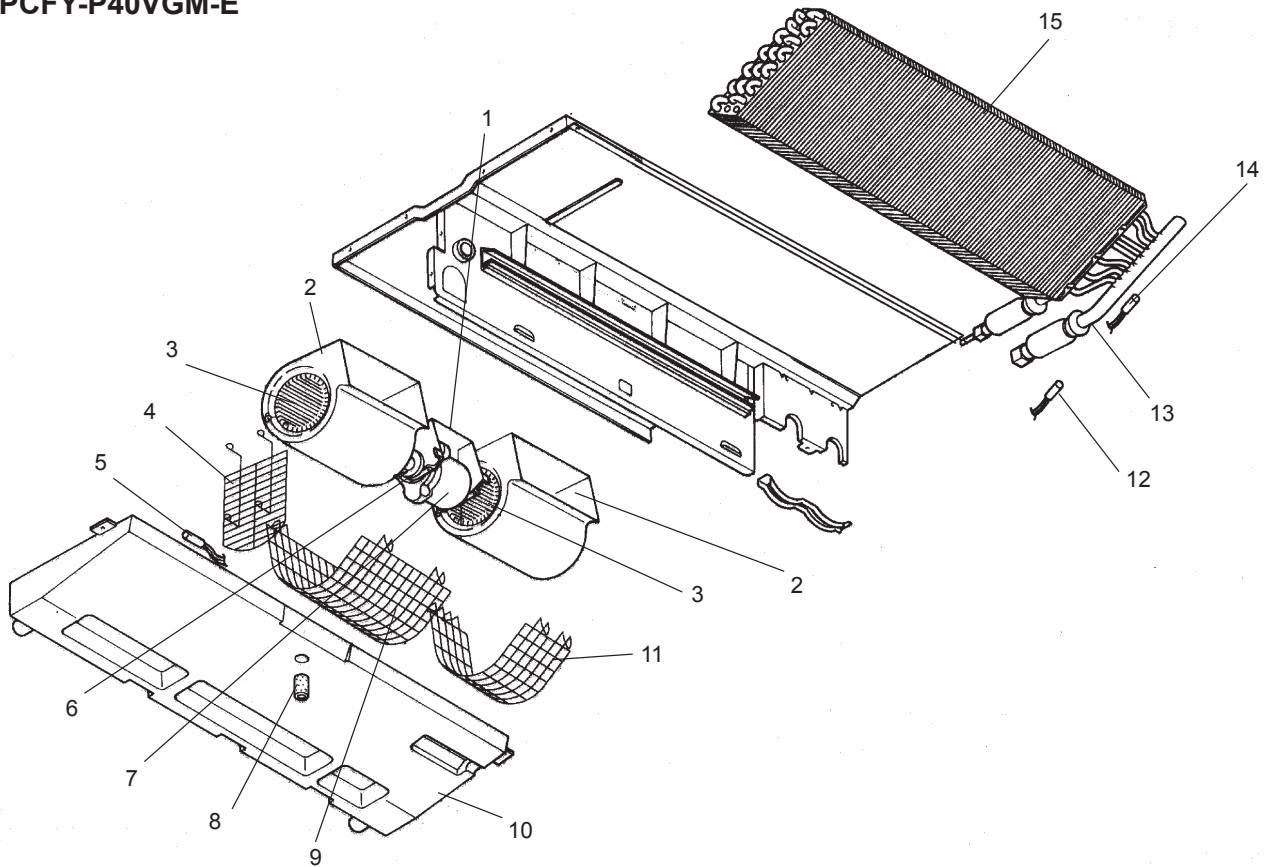


Part number that is circled is not shown in the figure.

No.	RoHS	Parts No.	Parts Name	Specifications	Q'ty/set	Remarks (Drawing No.)	Wiring Diagram Symbol	Recom- mended Q'ty	Price	
					PCFY- P125VGM-E				Unit	Amount
1	G	R01 36J 662	LEFT SIDE PANEL		1					
2	G	R01 E01 666	S.PLATE-L		1					
3	G	R01 A19 676	REAR PANEL		1					
4	G	R01 A30 500	L.L FILTER		1					
5	G	R01 18J 061	GRILLE HINGE		6					
6	G	R01 20J 691	GRILLE ASSY		1					
7	G	R01 19J 054	GRILLE CATCH		6					
8	G	R01 19J 691	GRILLE ASSY		2					
9	G	R01 A29 500	L.L FILTER		2					
10	G	R01 32J 669	UNDER PANEL		1					
11	G	T7W E03 070	W.BOARD CASE		1					
12		—	REAR SUPPORT		1	(BG02H454K01)				
13		—	BEAM(GA)		3	(BG17H464H08)				
14	G	R01 36J 661	RIGHT SIDE PANEL		1					
15	G	R01 18J 808	RIGHT LEG		1					
16	G	R01 20J 668	SERVICE PANEL		1					
17	G	R01 36J 067	RIGHT SIDE BOX		1					
18	G	R01 E01 665	S.PLATE-R		1					
19	G	R01 39J 651	FRONT PANEL		1					
20	G	R01 E15 002	AUTO VANE		1					
21	G	R01 39J 085	G.V ASSY-5R		1					
22	G	R01 39J 087	G.V ASSY-5C		2					
23	G	—	VANE SUPPORT		3	(BG02R805G05)				
24	G	R01 39J 086	G.V ASSY-5L		1					
25	G	R01 E01 068	LEFT SIDE BOX		1					
26	G	R01 E12 223	VANE MOTOR		1		MV			
27	G	R01 18J 809	LEFT LEG		1					
28	G	R01 18J 523	JOINT SOCKET		1					



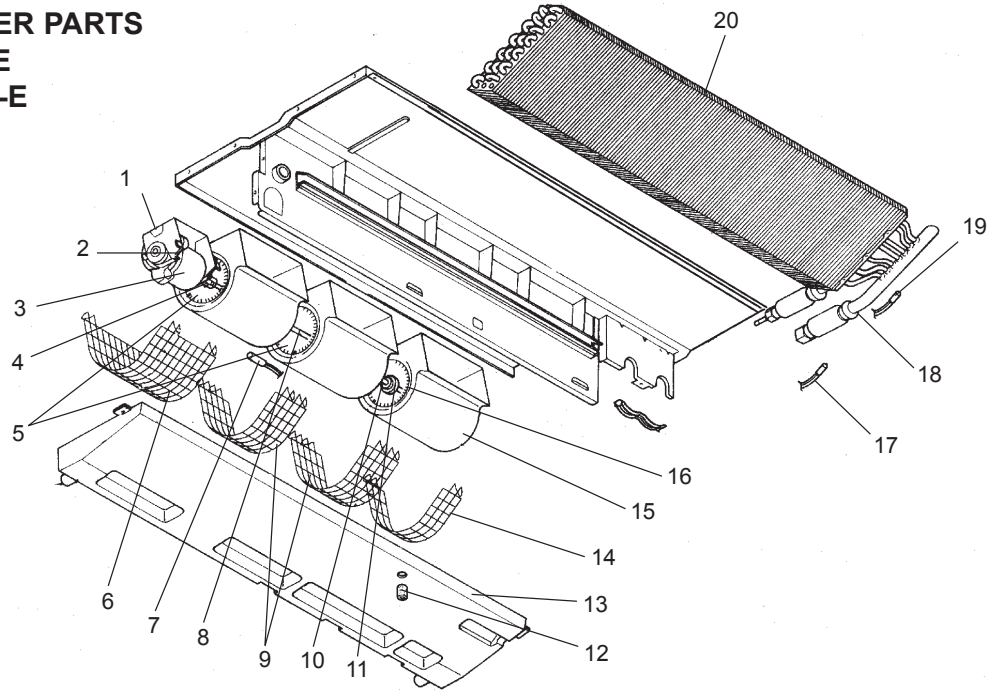
**FAN AND HEATER PARTS  
PCFY-P40VGM-E**



Part number that is circled is not shown in the figure.

No.	RoHS	Parts No.	Parts Name	Specifications	Q'ty/set	Remarks (Drawing No.)	Wiring Diagram Symbol	Recom- mended Q'ty	Price	
					PCFY- P40VGM-E				Unit	Amount
1	G	R01 31J 130	MOTOR LEG		1					
2	G	R01 18J 110	CASING		2					
3	G	R01 E16 114	SIROCCO FAN		2					
4	G	T7W 31J 675	FAN GUARD		1					
5	G	R01 H08 202	ROOM TEMPERATURE THERMISTOR		1		TH21			
6	G	R01 45E 126	PIECE (MOTOR)		1	2pcs/set				
7	G	R01 18J 220	FAN MOTOR	D09B4P54MS	1		MF			
8	G	R01 18J 524	DRAIN PLUG		1					
9	G	T7W 30J 675	FAN GUARD		1					
10	G	R01 E27 529	DRAIN PAN ASSY		1					
11	G	T7W 29J 675	FAN GUARD		1					
12	G	R01 H10 202	LIQUID PIPE TEMPERATURE THERMISTOR		1		TH22			
13	G	R01 H02 401	LINEAR EXPANSION VALVE		1		LEV			
14	G	R01 H09 202	GAS PIPE TEMPERATURE THERMISTOR		1		TH23			
15	G	R01 J20 480	HEAT EXCHANGER		1					
16	G	T7W E01 072	DRAIN HOSE COVER		1					

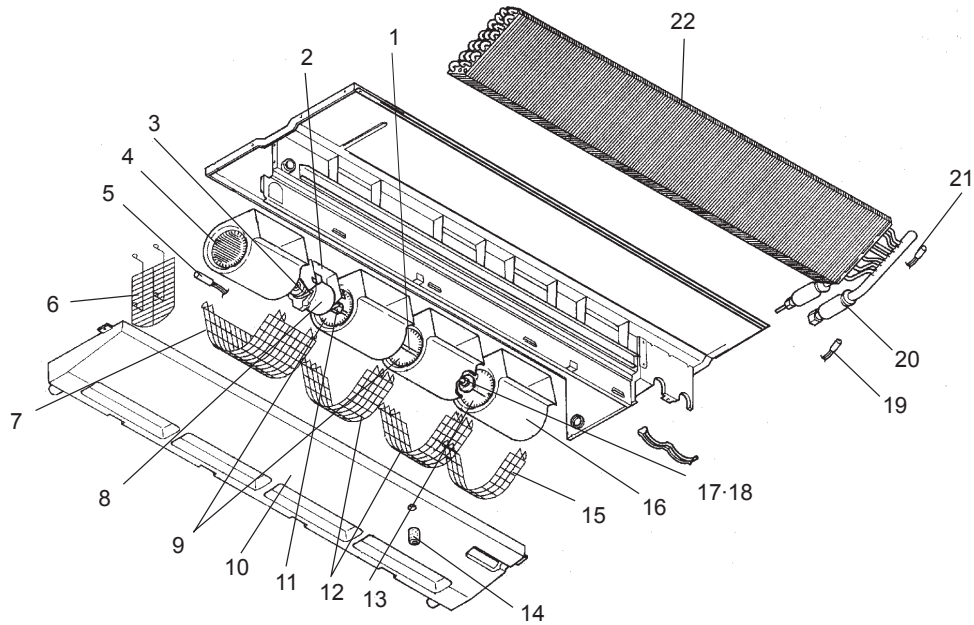
**FAN AND HEATER PARTS**  
**PCFY-P63VGM-E**  
**PCFY-P100VGM-E**



Part number that is circled is not shown in the figure.

No.	ROHS	Parts No.	Parts Name	Specifications	Q'ty/set		Remarks (Drawing No.)	Wiring Diagram Symbol	Recom- mended Q'ty	Price	
					PCFY- P63	VGM-E P100				Unit	Amount
1	G	R01 30J 130	MOTOR LEG		1						
	G	R01 32J 130	MOTOR LEG			1					
2	G	R01 45E 126	PIECE(MOTOR)		1	1	2pcs/set				
3	G	T7W 40J 762	FAN MOTOR	D09C4P70MS	1			MF			
	G	R01 19J 220	FAN MOTOR	D10B4P90MS		1		MF			
4	G	R01 800 116	FAN JOINT		1	1					
5	G	R01 E17 114	SIROCCO FAN		2						
	G	R01 E19 114	SIROCCO FAN			2					
6	G	T7W 27J 675	FAN GUARD		1						
	G	T7W 32J 675	FAN GUARD			1					
7	G	R01 H08 202	ROOM TEMPERATURE THERMISTOR		1	1		TH21			
8	G	R01 30J 100	SHAFT		1	1					
9	G	T7W 28J 675	FAN GUARD		2						
	G	T7W 34J 675	FAN GUARD			2					
10	G	R01 E02 103	SLEEVE BEARING		1	1					
11	G	R01 30J 145	BEARING SUPPORT		1						
	G	R01 36J 145	BEARING SUPPORT			1					
12	G	R01 18J 524	DRAIN PLUG		1	1					
13	G	R01 A18 529	DRAIN PAN ASSY		1						
	G	R01 E28 529	DRAIN PAN ASSY			1					
14	G	T7W 29J 675	FAN GUARD		1						
	G	T7W 35J 675	FAN GUARD			1					
15	G	R01 18J 110	CASING		3						
	G	R01 19J 110	CASING			3					
16	G	R01 E15 114	SIROCCO FAN		1						
	G	R01 E20 114	SIROCCO FAN			1					
17	G	R01 H10 202	LIQUID PIPE TEMPERATURE THERMISTOR		1	1		TH22			
18	G	R01 H02 401	LINEAR EXPANSION VALVE		1			LEV			
	G	R01 E86 401	LINEAR EXPANSION VALVE			1		LEV			
19	G	R01 H09 202	GAS PIPE TEMPERATURE THERMISTOR		1	1		TH23			
20	G	R01 J25 480	HEAT EXCHANGER		1						
	G	R01 H99 480	HEAT EXCHANGER			1					
21	G	T7W E01 072	DRAIN HOSE COVER		1	1					

**FAN AND HEATER PARTS  
PCFY-P125VGM-E**



Part number that is circled is not shown in the figure.

No.	RoHS	Parts No.	Parts Name	Specifications	Q'ty/set	Remarks (Drawing No.)	Wiring Diagram Symbol	Recom- mended Q'ty	Price	
					PCFY- P125VGM-E				Unit	Amount
1	G	R01 30J 100	SHAFT		1					
2	G	R01 33J 130	MOTOR LEG		1					
3	G	R01 45E 126	PIECE (MOTOR)		1	2pcs/set				
4	G	R01 E18 114	SIROCCO FAN		1					
5	G	R01 H08 202	ROOM TEMPERATURE THERMISTOR		1		TH21			
6	G	T7W 36J 675	FAN GUARD		1					
7	G	T7W 33J 675	FAN GUARD		1					
8	G	R01 20J 220	FAN MOTOR	D10B4P150MS	1		MF			
9	G	R01 E19 114	SIROCCO FAN		2					
10	G	R01 E29 529	DRAIN PAN ASSY		1					
11	G	R01 800 116	FAN JOINT		1					
12	G	T7W 34J 675	FAN GUARD		2					
13	G	R01 E20 114	SIROCCO FAN		1					
14	G	R01 18J 524	DRAIN PLUG		1					
15	G	T7W 35J 675	FAN GUARD		1					
16	G	R01 19J 110	CASING		4					
17	G	R01 E02 103	SLEEVE BEARING		1					
18	G	R01 36J 145	BEARING SUPPORT		1					
19	G	R01 H10 202	LIQUID PIPE TEMPERATURE THERMISTOR		1		TH22			
20	G	R01 E86 401	LINEAR EXPANSION VALVE		1		LEV			
21	G	R01 H09 202	GAS PIPE TEMPERATURE THERMISTOR		1		TH23			
22	G	R01 J00 480	HEAT EXCHANGER		1					
23	G	T7W E01 072	DRAIN HOSE COVER		1					

**11****OPTIONAL PARTS****11-1. DRAIN-UP MACHINE**

Part No.	PAC-SE84DMA-E	PAC-SE85DMA-E	PAC-SE86DMA-E
Applied Service Ref.	PCFY-P40VGM-E	PCFY-P63VGM-E	PCFY-P100VGM-E PCFY-P125VGM-E

**11-2. HIGH EFFICIENCY FILTER**

Part No.	PAC-SE80KF-E	PAC-SE81KF-E	PAC-SE82KF-E
Applied Service Ref.	PCFY-P40VGM-E	PCFY-P63VGM-E PCFY-P100VGM-E	PCFY-P125VGM-E



# CITY MULTI



HEAD OFFICE : TOKYO BLDG., 2-7-3, MARUNOUCHI, CHIYODA-KU, TOKYO100-8310, JAPAN

---