

SERVICE PARTS LIST FOR MITSUBISHI ELECTRIC PACKAGED AIR-CONDITIONERS

Series : PUHY-P·YGM-A(-BS)
PUHN-P·YGM-A(-BS)

For use with the R410A

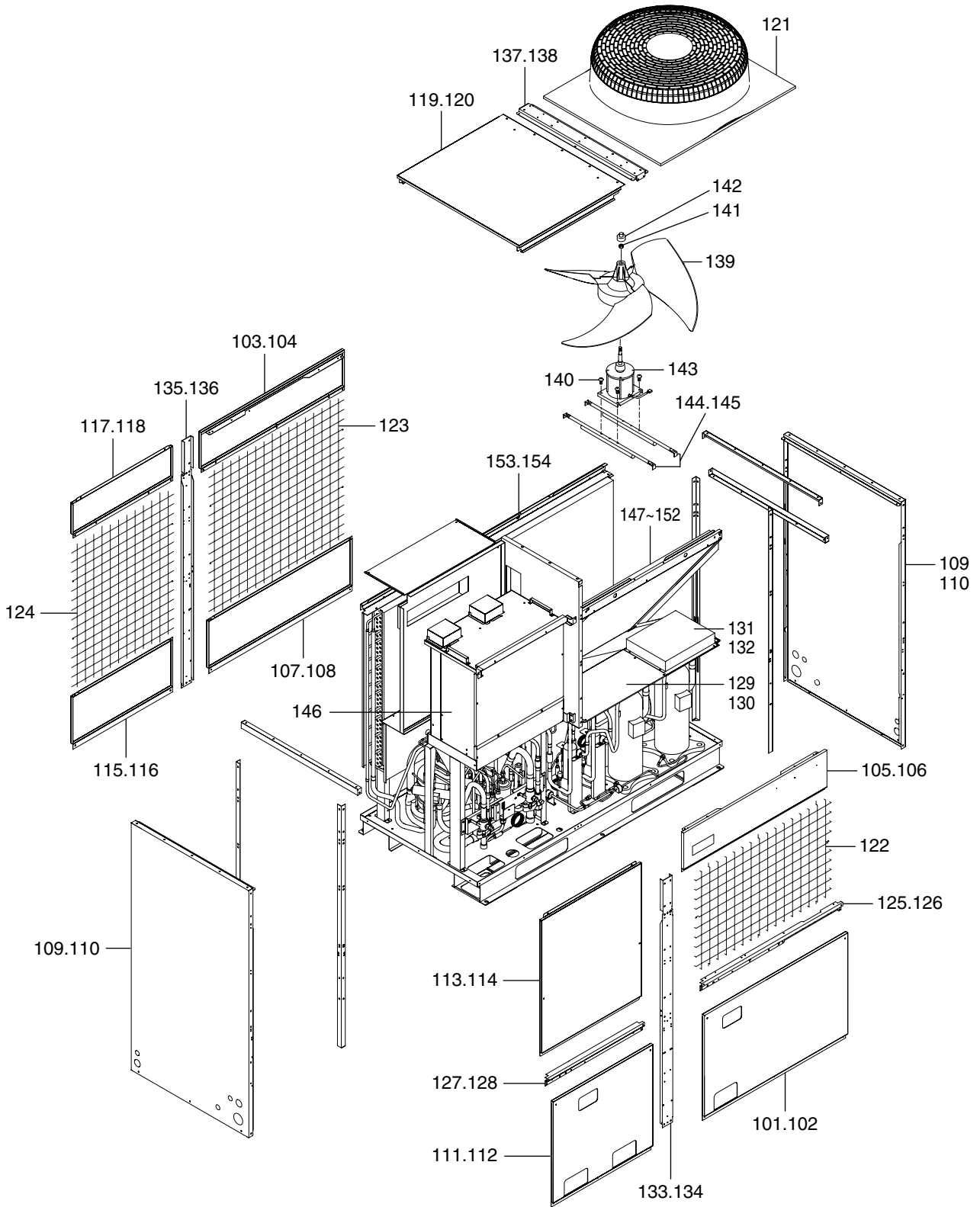
REVISED

July 2007

BWE0416D

INDEX	
Compressor unit	PUHY-P700YGM-A PUHY-P700YGM-A-BS PUHY-P750YGM-A PUHY-P750YGM-A-BS PUHY-P800YGM-A PUHY-P800YGM-A-BS
Heat exchanger unit	PUHN-P01YGM-A PUHN-P01YGM-A-BS

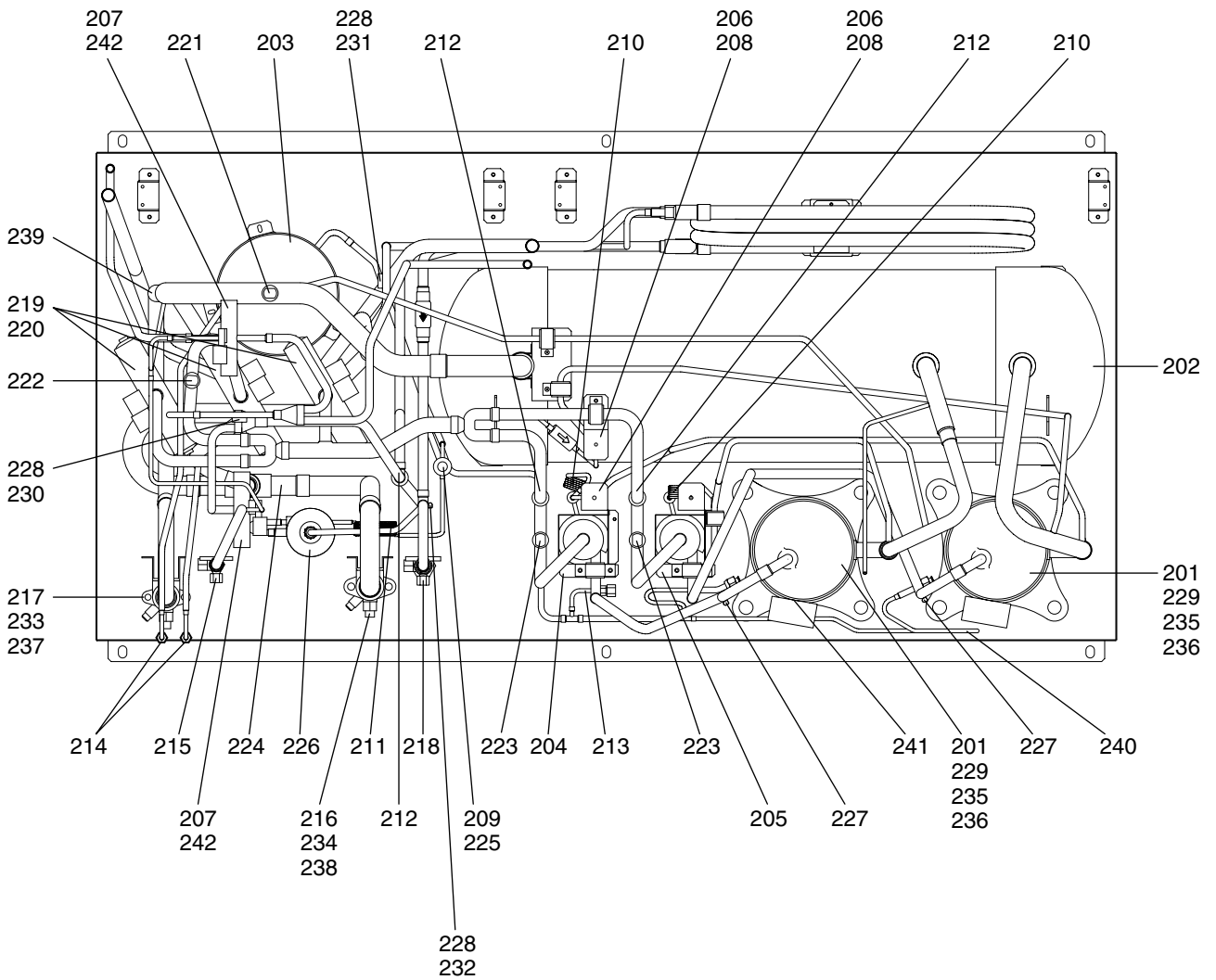




No.	Part No.	G : RoHS Apply Only W : RoHS Apply by Running Change		Spec.	PUHY-P700YGM-A	PUHY-P750YGM-A	PUHY-P800YGM-A	Dwg. No.	Price	Revision History
			Part Name							
101	R63 R34 651	G	Panel F		1	1	1	W655252H01		
102	R63 R36 651	G	Panel F					W655252G02		
103	R63 L78 653	G	Panel FU		1	1	1	W633746H06		
104	R63 R36 652	G	Panel FU					W633746G07		
105	R63 Y34 652	G	Panel FU		1	1	1	W633746H07		
106	R63 Y35 652	G	Panel FU					W633746G08		
107	R63 Y32 652	G	Panel B		1	1	1	W655227H02		
108	R63 R36 677	G	Panel B					W655227G04		
109	R63 N78 661	G	Panel S		2	2	2	W272421H01		
110	R63 R36 661	G	Panel S					W272421G03		
111	R63 S84 651	G	Panel FL		1	1	1	W657071H01		
112	R63 S86 651	G	Panel FL					W657071G02		
113	R63 S84 653	G	Panel FLU assy		1	1	1	W657477G01		
114	R63 S86 653	G	Panel FLU assy					W657477G03		
115	R63 S84 677	G	Panel BL		1	1	1	W657052H01		
116	R63 S86 677	G	Panel BL					W657052G02		
117	R63 S84 654	G	Panel BLU		1	1	1	W657056H01		
118	R63 S86 654	G	Panel BLU					W657056G02		
119	R63 Y36 652	G	Panel UL assy		1	1	1	W632789G05		
120	R63 Y37 652	G	Panel UL assy					W632789G06		
121	R63 N78 118	G	Fan guard		1	1	1	W126832G02		
122	R63 E66 611	G	Guard F assy		1	1	1	W265788G01		
123	R63 A42 638	G	Guard B assy		1	1	1	W265789G01		
124	R63 S84 637	G	Guard BL assy		1	1	1	W275453G01		
125	R63 A42 659	G	Panel support		1	1	1	W615888H18		
126	R63 A43 659	G	Panel support					W615888G09		
127	R63 S84 659	G	Panel support L		1	1	1	W657441H01		
128	R63 S86 659	G	Panel support L					W657441G01		
129	R63 R34 667	G	Partition board L assy		1	1	1	W656425G01		
130	R63 R35 667	G	Partition board L assy					W656425G02		
131	R63 R43 668	G	Partition board R assy		1	1	1	W656424G03		
132	R63 R44 668	G	Partition board R assy					W656424G04		
133	R63 S84 626	G	Stay M		1	1	1	W657432G01		
134	R63 S85 626	G	Stay M					W657432G02		
135	R63 S84 627	G	Stay M assy		1	1	1	W907905G01		
136	R63 S85 627	G	Stay M assy					W907905G02		
137	R63 H79 670	G	Beam M		1	1	1	W879088G01		
138	R63 H80 670	G	Beam M					W879088G02		
139	R63 N78 115	G	Propeller fan	750D	1	1	1	W126814G01		
140	R63 E90 087	G	Screw 6x14		4	4	4	P521020X01		
141	R63 A42 122	G	Nut 16		1	1	1	P541016X01		
142	R61 A69 086	G	Cap		1	1	1	P221056X01		
143	R63 Y44 221	G	Motor EEOK-IOTV1 640W	342V 40.5Hz	1	1	1	P714970X01		
144	R63 432 140	G	Fan stand		2	2	2	W862595G01		
145	R63 433 140	G	Fan stand					W862595G02		

No.	Part No.	G : RoHS Apply Only W : RoHS Apply by Running Change		Spec.	PUHY-P700YGM-A	PUHY-P750YGM-A	PUHY-P800YGM-A	Dwg. No.	Price	Revision History
			Part Name							
146	R63 Y55 305	G	Control box	P800YGM	1	1	1	KE00C067G01		
147	R63 Y09 482	G	Heat exchanger F		1			W656448G28		
148	R63 R54 480	G	Heat exchanger F					W656448G21		
149	R63 Y09 482	G	Heat exchanger F			1		W656448G28		
150	R63 R54 480	G	Heat exchanger F					W656448G21		
151	R63 Y09 482	G	Heat exchanger F				1	W656448G28		
152	R63 R54 480	G	Heat exchanger F					W656448G21		
153	R63 Y21 482	G	Heat exchanger B		1	1	1	W275425G05		
154	R63 S86 480	G	Heat exchanger B					W275425G03		

No.	Part No.	G : RoHS Apply Only W : RoHS Apply by Running Change		Spec.	PUHY-P700YGM-A-BS	PUHY-P750YGM-A-BS	PUHY-P800YGM-A-BS	Dwg. No.	Price	Revision History
			Part Name							
101	R63 R34 651	G	Panel F					W655252H01		
102	R63 R36 651	G	Panel F		1	1	1	W655252G02		
103	R63 L78 653	G	Panel FU					W633746H06		
104	R63 R36 652	G	Panel FU		1	1	1	W633746G07		
105	R63 Y34 652	G	Panel FU					W633746H07		
106	R63 Y35 652	G	Panel FU		1	1	1	W633746G08		
107	R63 Y32 652	G	Panel B					W655227H02		
108	R63 R36 677	G	Panel B		1	1	1	W655227G04		
109	R63 N78 661	G	Panel S					W272421H01		
110	R63 R36 661	G	Panel S		2	2	2	W272421G03		
111	R63 S84 651	G	Panel FL					W657071H01		
112	R63 S86 651	G	Panel FL		1	1	1	W657071G02		
113	R63 S84 653	G	Panel FLU assy					W657477G01		
114	R63 S86 653	G	Panel FLU assy		1	1	1	W657477G03		
115	R63 S84 677	G	Panel BL					W657052H01		
116	R63 S86 677	G	Panel BL		1	1	1	W657052G02		
117	R63 S84 654	G	Panel BLU					W657056H01		
118	R63 S86 654	G	Panel BLU		1	1	1	W657056G02		
119	R63 Y36 652	G	Panel UL assy					W632789G05		
120	R63 Y37 652	G	Panel UL assy		1	1	1	W632789G06		
121	R63 N78 118	G	Fan guard		1	1	1	W126832G02		
122	R63 E66 611	G	Guard F assy		1	1	1	W265788G01		
123	R63 A42 638	G	Guard B assy		1	1	1	W265789G01		
124	R63 S84 637	G	Guard BL assy		1	1	1	W275453G01		
125	R63 A42 659	G	Panel support					W615888H18		
126	R63 A43 659	G	Panel support		1	1	1	W615888G09		
127	R63 S84 659	G	Panel support L					W657441H01		
128	R63 S86 659	G	Panel support L		1	1	1	W657441G01		
129	R63 R34 667	G	Partition board L assy					W656425G01		
130	R63 R35 667	G	Partition board L assy		1	1	1	W656425G02		
131	R63 R43 668	G	Partition board R assy					W656424G03		
132	R63 R44 668	G	Partition board R assy		1	1	1	W656424G04		
133	R63 S84 626	G	Stay M					W657432G01		
134	R63 S85 626	G	Stay M		1	1	1	W657432G02		
135	R63 S84 627	G	Stay M assy					W907905G01		
136	R63 S85 627	G	Stay M assy		1	1	1	W907905G02		
137	R63 H79 670	G	Beam M					W879088G01		
138	R63 H80 670	G	Beam M		1	1	1	W879088G02		
139	R63 N78 115	G	Propeller fan	750D	1	1	1	W126814G01		
140	R63 E90 087	G	Screw 6x14		4	4	4	P521020X01		
141	R63 A42 122	G	Nut 16		1	1	1	P541016X01		
142	R61 A69 086	G	Cap		1	1	1	P221056X01		
143	R63 Y44 221	G	Motor EEOK-IOTV1 640W	342V 40.5Hz	1	1	1	P714970X01		
144	R63 432 140	G	Fan stand					W862595G01		
145	R63 433 140	G	Fan stand		2	2	2	W862595G02		



No.	Part No.	G : RoHS Apply Only W : RoHS Apply by Running Change		Spec.	PUHY-P700YGM-A	PUHY-P750YGM-A	PUHY-P800YGM-A	Dwg. No.	Price	Revision History
			Part Name							
201	R66 A27 478	G	Scroll compressor	HNB71FA-YJH <MC1,MC2>	2	2	2	EP10092G06		
202	R63 Y06 110	G	Accumulator assy		1	1	1	W275486G03		
203	R63 Y03 530	G	Oil tank		1	1	1	W655257G07		
204	R63 S84 487	G	Oil separator assy 1		1	1	1	W657088G01		
205	R63 R43 487	G	Oil separator assy 2		1	1	1	W656074G01		
206	R61 024 232	G	Solenoid valve		2	2	2	KB00H253G03		D
207	R63 025 232	G	Two way valve		2	2	2	KB00H435G02		D
208	R61 009 243	G	Solenoid valve coil	<SV1,3>	2	2	2	W875295G08		D
209	R63 R34 243	G	Solenoid valve coil	CAM 6P<LEV1>	1	1	1	P472008X02		
210	R63 R55 425	G	Capillary tube assy		2	2	2	W905191G02		
211	R63 L85 425	G	Capillary tube assy		1	1	1	W888053G01		
212	R63 R43 418	G	Check valve BCV-1005DY	R410A 4.15MPa CV3.5	3	3	3	P639165X01		
213	R63 R34 413	G	Check joint L R410A	VCSH2S-LM	1	1	1	P666001X01		
214	R63 S84 413	G	Check joint R410A	VCSH2S	2	2	2	P666002X01		
215	R63 R55 410	G	Ball valve VSBH-4	R410A	1	1	1	P636306X01		
216	R63 S84 410	G	Ball valve VSMBH25	R410A	1	1	1	P636312X02		
217	R63 R40 410	G	Ball valve VSMBH-8	R410A	1	1	1	P636309X02		
218	R63 R34 410	G	Ball valve VSBH-6	R410A	1	1	1	P636308X01		
219	R63 006 403	G	Four way valve	R410A	3	3	3	KB00F029G03		
220	R63 002 242	G	Four way valve coil	<21S4a,21S4b,21S4c>	3	3	3	W875295G05		
221	R63 R37 288	G	Pressure sensor R410A	<63LS>	1	1	1	P418014X01		
222	R63 R34 288	G	Pressure sensor R410A	<63HS>	1	1	1	P418015X01		
223	R63 Y11 208	G	Pressure switch ACB1UB28W	<63H1,2>	2	2	2	P426320X01		
224	R63 S84 418	G	Check valve block assy		1	1	1	W902879G02		
225	R63 S84 401	G	Linear expansion valve	CAM-B50 R410A	1	1	1	P632418X01		
226	R63 N24 405	G	Drier	DML303/4	1	1	1	P641115X01		
227	R63 911 202	G	Thermistor	<TH11,12>	2	2	2	P425416X02		
228	R63 670 202	G	Thermistor NTH3A14	<TH5~8>	4	4	4	P425496X01		
229	R63 Y07 237	G	Belt heater	<CH11,12>	2	2	2	P493781X02		D
230	R63 G03 287	G	Sensor cover	EVA(9.52D)	1	1	1	P227223X01		
231	R61 A45 287	G	Sensor cover	EVA(12.7D)	1	1	1	P227171X01		
232	R61 A43 287	G	Sensor cover	EVA(16D)	1	1	1	P227172X01		
233	R63 9F2 442	G	Pipe assy	ID28.6	1	1	1	W663334G04		
234	R63 Y11 494	G	Pipe assy P800YGM-A		1	1	1	W883580G08		
235	R63 R37 580	G	Insulation cover	Body	2	2	2	W654314G02		
236	R63 R55 580	G	Insulation cover	Head	2	2	2	W903526G02		
237	R61 F14 514	G	Packing		1	1	1	P321009X01		
238	R61 S84 514	G	Packing		1	1	1	W907570H01		
239	R63 S84 493	G	Distributor		1	1	1	S659006H17		
240	R63 S85 494	G	Pipe assy		1	1	1	W658317G02		
241	R63 S84 200	G	Thermistor	<TH10>	1	1	1	P418018X01		
242	R63 002 242	G	Two way valve coil	<SV5b,SV5c>	2	2	2	W875295G05		D

No.	Part No.	G : RoHS Apply Only W : RoHS Apply by Running Change		Spec.	PUHY-P700YGM-A-BS	PUHY-P750YGM-A-BS	PUHY-P800YGM-A-BS	Dwg. No.	Price	Revision History
			Part Name							
201	R66 A27 478	G	Scroll compressor	HNB71FA-YJH <MC1,MC2>	2	2	2	EP10092G06		
202	R63 Y06 110	G	Accumulator assy		1	1	1	W275486G03		
203	R63 Y03 530	G	Oil tank		1	1	1	W655257G07		
204	R63 S84 487	G	Oil separator assy 1		1	1	1	W657088G01		
205	R63 R43 487	G	Oil separator assy 2		1	1	1	W656074G01		
206	R61 024 232	G	Solenoid valve		2	2	2	KB00H253G03		D
207	R63 025 232	G	Two way valve		2	2	2	KB00H435G02		D
208	R61 009 243	G	Solenoid valve coil	<SV1,3>	2	2	2	W875295G08		D
209	R63 R34 243	G	Solenoid valve coil	CAM 6P<LEV1>	1	1	1	P472008X02		
210	R63 R55 425	G	Capillary tube assy		2	2	2	W905191G02		
211	R63 L85 425	G	Capillary tube assy		1	1	1	W888053G01		
212	R63 R43 418	G	Check valve BCV-1005DY	R410A 4.15MPa CV3.5	3	3	3	P639165X01		
213	R63 R34 413	G	Check joint L R410A	VCSH2S-LM	1	1	1	P666001X01		
214	R63 S84 413	G	Check joint R410A	VCSH2S	2	2	2	P666002X01		
215	R63 R55 410	G	Ball valve VSBH-4	R410A	1	1	1	P636306X01		
216	R63 S84 410	G	Ball valve VSMBH25	R410A	1	1	1	P636312X02		
217	R63 R40 410	G	Ball valve VSMBH-8	R410A	1	1	1	P636309X02		
218	R63 R34 410	G	Ball valve VSBH-6	R410A	1	1	1	P636308X01		
219	R63 006 403	G	Four way valve	R410A	3	3	3	KB00F029G03		
220	R63 002 242	G	Four way valve coil	<21S4a,21S4b,21S4c>	3	3	3	W875295G05		
221	R63 R37 288	G	Pressure sensor R410A	<63LS>	1	1	1	P418014X01		
222	R63 R34 288	G	Pressure sensor R410A	<63HS>	1	1	1	P418015X01		
223	R63 Y11 208	G	Pressure switch ACB1UB28W	<63H1,2>	2	2	2	P426320X01		
224	R63 S84 418	G	Check valve block assy		1	1	1	W902879G02		
225	R63 S84 401	G	Linear expansion valve	CAM-B50 R410A	1	1	1	P632418X01		
226	R63 N24 405	G	Drier	DML303/4	1	1	1	P641115X01		
227	R63 911 202	G	Thermistor	<TH11,12>	2	2	2	P425416X02		
228	R63 670 202	G	Thermistor NTH3A14	<TH5~8>	4	4	4	P425496X01		
229	R63 Y07 237	G	Belt heater	<CH11,12>	2	2	2	P493781X02		D
230	R63 G03 287	G	Sensor cover	EVA(9.52D)	1	1	1	P227223X01		
231	R61 A45 287	G	Sensor cover	EVA(12.7D)	1	1	1	P227171X01		
232	R61 A43 287	G	Sensor cover	EVA(16D)	1	1	1	P227172X01		
233	R63 9F2 442	G	Pipe assy	ID28.6	1	1	1	W663334G04		
234	R63 Y11 494	G	Pipe assy P800YGM-A		1	1	1	W883580G08		
235	R63 R37 580	G	Insulation cover	Body	2	2	2	W654314G02		
236	R63 R55 580	G	Insulation cover	Head	2	2	2	W903526G02		
237	R61 F14 514	G	Packing		1	1	1	P321009X01		
238	R61 S84 514	G	Packing		1	1	1	W907570H01		
239	R63 S84 493	G	Distributor		1	1	1	S659006H17		
240	R63 S85 494	G	Pipe assy		1	1	1	W658317G02		
241	R63 S84 200	G	Thermistor	<TH10>	1	1	1	P418018X01		
242	R63 002 242	G	Two way valve coil	<SV5b,SV5c>	2	2	2	W875295G05		D

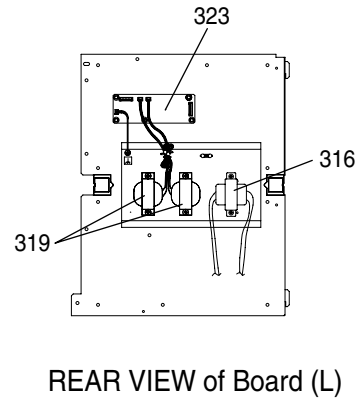
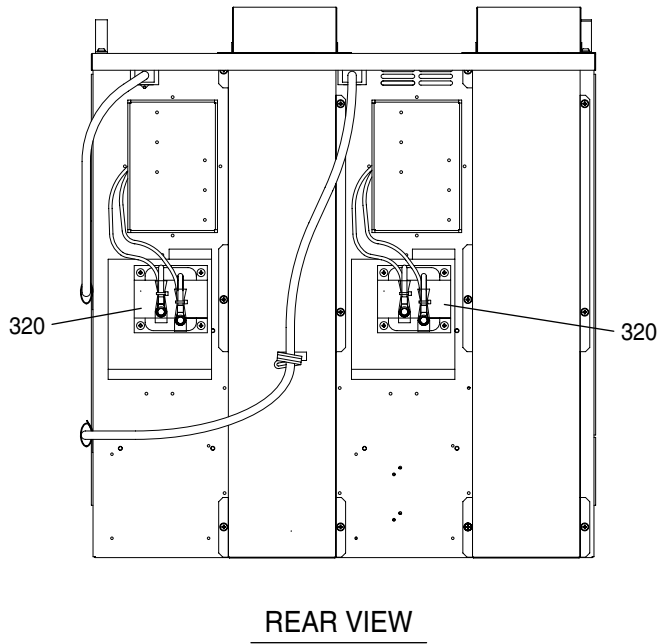
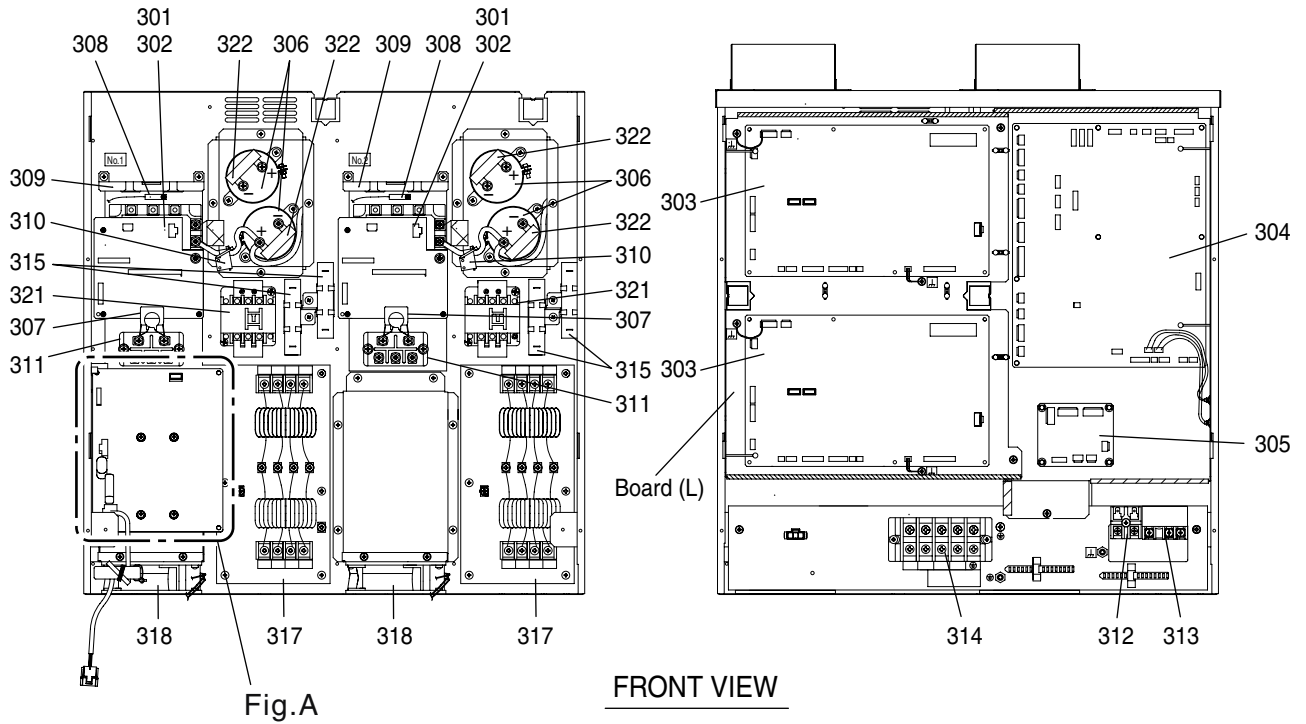
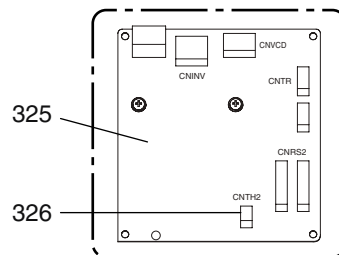
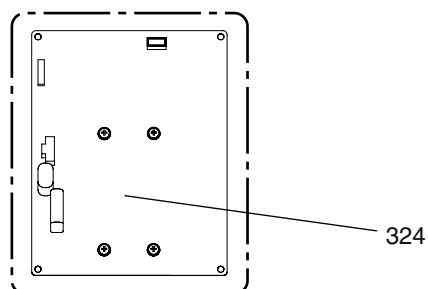


Fig.A

• Production number 5ZW**** and before

• Production number 51W**** and later
(RoHS-compliant outdoor unit)

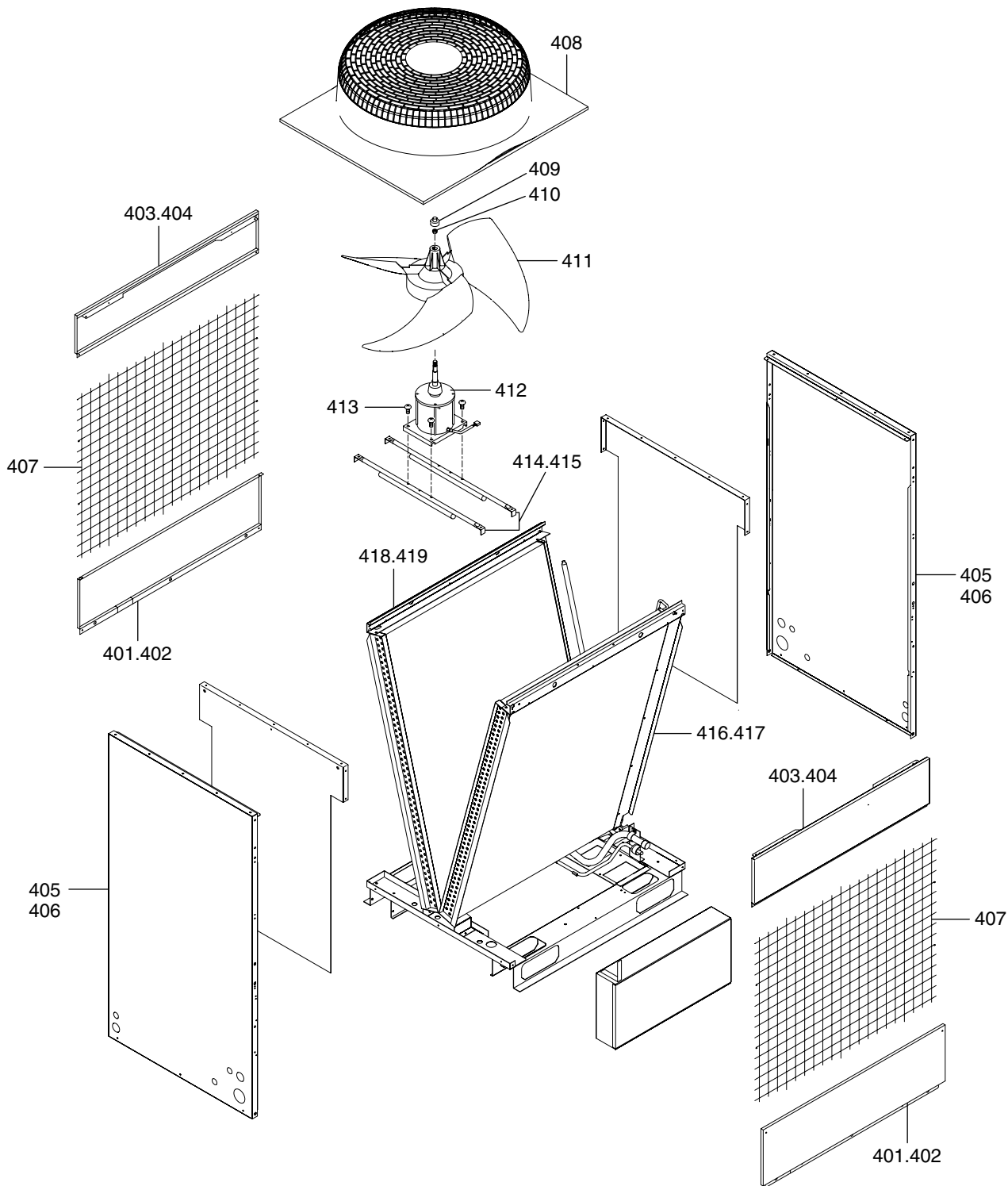


No.	Part No.	G : RoHS Apply Only W : RoHS Apply by Running Change		Spec.	PUHY-P700YGM-A	PUHY-P750YGM-A	PUHY-P800YGM-A	Dwg. No.	Price	Revision History
			Part Name							
301	R63 Y04 249	G	IPM (Power module)	6MBP50RA120	2	2	2	W848413G10		
302	R63 Y43 280	G	G/A board		2	2	2	W652112G02		
303	R63 Y25 321	G	INV board		2	2	2	W647875G04		
304	R63 Y46 281	G	Main board		1	1	1	W647876G08		
305	R63 Y48 281	G	Relay board		1	1	1	W629574G05		
306	R63 R34 252	G	Capacitor	400V 3300µF<C11,C12,C21,C22>	4	4	4	P412293X01		
307	R63 L85 252	G	Capacitor assy	<ZNR14>	2	2	2	W886345G01		
308	R63 399 200	G	Thermistor	<THHS1,2>	2	2	2	P414099X01		
309	R63 Y02 287	G	AC current sensor	<AC-CT1,2>	2	2	2	W652122G01		
310	R63 A42 289	G	DC current sensor	<DC-CT1,2>	2	2	2	P419079X02		
311	R63 Y12 320	G	Diode	DF60LB160<DS1,2>	2	2	2	W876941G06		
312	R61 008 246	G	Terminal block	<TB3>	1	1	1	BA73S950H02		D
313	R63 979 247	G	Terminal block	<TB7>	1	1	1	P436110X01		
314	R63 Y06 246	G	Terminal block	<TB1>	1	1	1	P436213X01		
315	R63 Y06 234	G	Resistor	40W,47 <R11,R12,R21,R22>	4	4	4	P411141X01		
316	R63 Y25 260	G	Transformer	230V/20.1V<T01>	1	1	1	P715378X02		
317	R63 Y12 293	G	Noise filter	VF4030C-MX3<ACNF1,2>	2	2	2	P417013X01		
318	R63 Y15 118	G	Fan	109S025UL<MF1>	2	2	2	W639916G01		
319	R63 002 923	G	Choke coil	10mH2A<L1,L2>	2	2	2	P715421X01		D
320	R61 009 259	G	Reactor	<DCL1,2>	2	2	2	P715429X01		D
321	R63 Y28 225	G	Magnet contactor	PAK-21J,AC240V<52C1,2>	2	2	2	S427020H12		
322	R63 Y04 234	G	Resistor	<R13,R14,R23,R24>	4	4	4	P411124X01		
323	R63 Y26 321	G	Filter board		1	1	1	W629574G06		
★	R61 Y24 321		Fan INV board		1	1	1	W652171G02		
★	R63 Y74 281	G	Fan INV board-A		1	1	1	W652171G05		
	R63 R49 200	G	Thermistor	<THHS5>	1	1	1	W902268G01		

★ RoHS-compliant outdoor units (production number 51W***** and later) use Fan INV board No. 325.
 Fan INV boards No. 324 and No. 325 are not interchangeable.
 If RoHS-compliance status information of a given unit (production number) is not available, procure Fan INV boards No. 324 and No. 325.

No.	Part No.	G : RoHS Apply Only W : RoHS Apply by Running Change		Spec.	PUHY-P700YGM-A-BS	PUHY-P750YGM-A-BS	PUHY-P800YGM-A-BS	Dwg. No.	Price	Revision History
			Part Name							
301	R63 Y04 249	G	IPM (Power module)	6MBP50RA120	2	2	2	W848413G10		
302	R63 Y43 280	G	G/A board		2	2	2	W652112G02		
303	R63 Y25 321	G	INV board		2	2	2	W647875G04		
304	R63 Y46 281	G	Main board		1	1	1	W647876G08		
305	R63 Y48 281	G	Relay board		1	1	1	W629574G05		
306	R63 R34 252	G	Capacitor	400V 3300μF<C11,C12,C21,C22>	4	4	4	P412293X01		
307	R63 L85 252	G	Capacitor assy	<ZNR14>	2	2	2	W886345G01		
308	R63 399 200	G	Thermistor	<THHS1,2>	2	2	2	P414099X01		
309	R63 Y02 287	G	AC current sensor	<AC-CT1,2>	2	2	2	W652122G01		
310	R63 A42 289	G	DC current sensor	<DC-CT1,2>	2	2	2	P419079X02		
311	R63 Y12 320	G	Diode	DF60LB160<DS1,2>	2	2	2	W876941G06		
312	R61 008 246	G	Terminal block	<TB3>	1	1	1	BA73S950H02		D
313	R63 979 247	G	Terminal block	<TB7>	1	1	1	P436110X01		
314	R63 Y06 246	G	Terminal block	<TB1>	1	1	1	P436213X01		
315	R63 Y06 234	G	Resistor	40W,47 <R11,R12,R21,R22>	4	4	4	P411141X01		
316	R63 Y25 260	G	Transformer	230V/20.1V<T01>	1	1	1	P715378X02		
317	R63 Y12 293	G	Noise filter	VF4030C-MX3<ACNF1,2>	2	2	2	P417013X01		
318	R63 Y15 118	G	Fan	109S025UL<MF1>	2	2	2	W639916G01		
319	R63 002 923	G	Choke coil	10mH2A<L1,L2>	2	2	2	P715421X01		D
320	R61 009 259	G	Reactor	<DCL1,2>	2	2	2	P715429X01		D
321	R63 Y28 225	G	Magnet contactor	PAK-21J,AC240V<52C1,2>	2	2	2	S427020H12		
322	R63 Y04 234	G	Resistor	<R13,R14,R23,R24>	4	4	4	P411124X01		
323	R63 Y26 321	G	Filter board		1	1	1	W629574G06		
* 324	R61 Y24 321		Fan INV board		1	1	1	W652171G02		
* 325	R63 Y74 281	G	Fan INV board-A		1	1	1	W652171G05		
326	R63 R49 200	G	Thermistor	<THHS5>	1	1	1	W902268G01		

* RoHS-compliant outdoor units (production number 51W**** and later) use Fan INV board No. 325.
 Fan INV boards No. 324 and No. 325 are not interchangeable.
 If RoHS-compliance status information of a given unit (production number) is not available, procure Fan INV boards No. 324 and No. 325.



No.	Part No.	G : RoHS Apply Only W : RoHS Apply by Running Change		Spec.	PUHN-P01YGM-A	PUHN-P01YGM-ABS		Dwg. No.	Price	Revision History
			Part Name							
401	R63 Y32 652	G	Panel B		2			W655227H02		
402	R63 R36 677	G	Panel B			2		W655227G04		
403	R63 L78 653	G	Panel FU		2			W633746H06		
404	R63 R36 652	G	Panel FU			2		W633746G07		
405	R63 N78 661	G	Panel S		2			W272421H01		
406	R63 R36 661	G	Panel S			2		W272421G03		
407	R63 A42 638	G	Guard B assy		2	2		W265789G01		
408	R63 N78 118	G	Fan guard		1	1		W126832G02		
409	R61 A69 086	G	Cap		1	1		P221056X01		
410	R63 A42 122	G	Nut 16		1	1		P541016X01		
411	R63 N78 115	G	Propeller fan	750D	1	1		W126814G01		
412	R63 Y44 221	G	Motor EEOK-IOTV1 640W	342V 40.5Hz	1	1		P714970X01		
413	R63 E90 087	G	Screw 6x14		4	4		P521020X01		
414	R63 432 140	G	Fan stand		2			W862595G01		
415	R63 433 140	G	Fan stand			2		W862595G02		
416	R63 S88 481	G	Heat exchanger F		1			W275423G05		
417	R63 S89 481	G	Heat exchanger F			1		W275423G03		
418	R63 S88 409	G	Heat exchanger B		1			W275490G05		
419	R63 S89 409	G	Heat exchanger B			1		W275490G03		

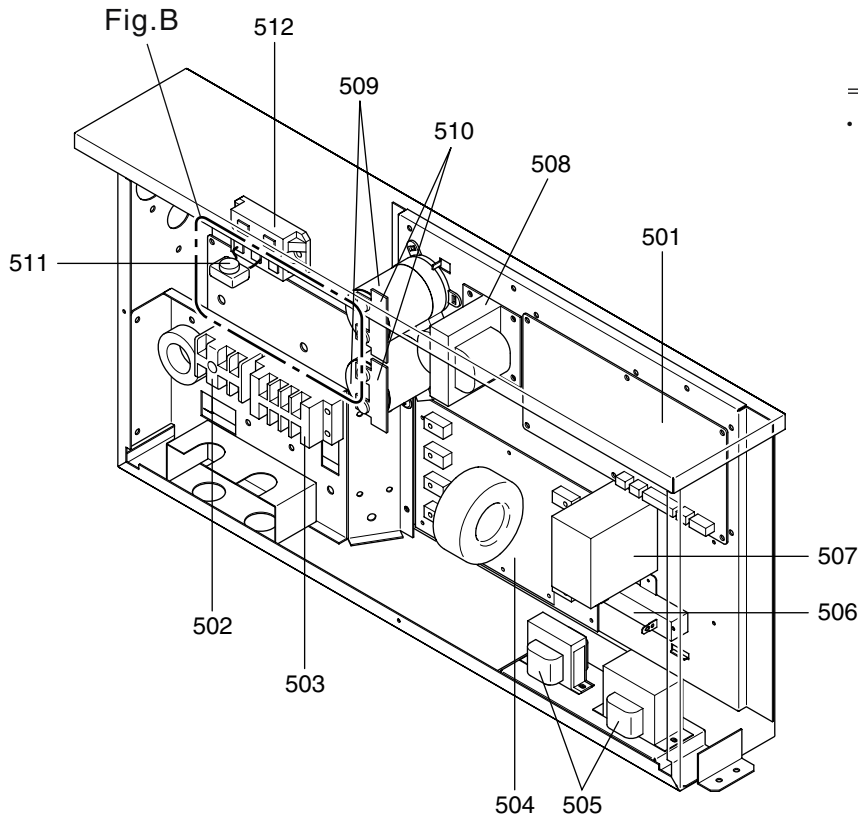
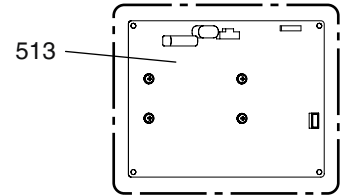
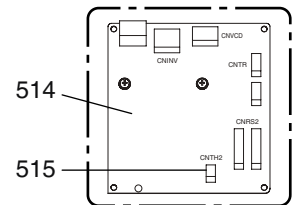


Fig.B

• Production number 5ZW***** and before



• Production number 51W***** and later
(RoHS-compliant outdoor unit)



No.	Part No.	G : RoHS Apply Only W : RoHS Apply by Running Change		Spec.	PUHN-P01YGM-A	PUHN-P01YGM-A-BS	Dwg. No.	Price	Revision History
			Part Name						
501	R63 S87 280	G	Board assy HEX		1	1	W907440G01		
502	R63 979 247	G	Terminal block	<TB3>	1	1	P436110X01		
503	R63 Y07 246	G	Terminal block	<TB1>	1	1	P436229X01		
504	R63 Y13 293	G	Noise filter	CF4005C-MX2<NF>	1	1	P417011X01		
505	R63 Y26 260	G	Transformer assy		1	1	W909103G03		
506	R63 Y05 234	G	Resistor	MFS40A5O2KI <R1>	1	1	P411133X01		
507	R63 Y29 225	G	Contactor	PAK-11J <52F>	1	1	S427020H15		
508	R63 Y05 259	G	Reactor	4A 14.0mH <DCL>	1	1	P715382X01		
509	R63 S87 252	G	Capacitor LNX2G102MSMF	400V 1000µF<C1,C2>	2	2	S412043H03		
510	R63 S87 234	G	Resistor TCR07L473J	<R2,R3>	2	2	P411144X01		
511	R63 L85 252	G	Capacitor assy		1	1	W886345G01		
512	R63 Y12 320	G	Diode module DF60LB160	1600V 60A<DS>	1	1	W876941G06		
★	513	R61 Y24 321	Fan INV board		1	1	W652171G02		
★	514	R63 Y74 281	G Fan INV board-A		1	1	W652171G05		
	515	R63 R49 200	G Thermistor		1	1	W902268G01		

★ RoHS-compliant outdoor units (production number 51W***** and later) use Fan INV board No. 514.
 Fan INV boards No. 513 and No. 514 are not interchangeable.
 If RoHS-compliance status information of a given unit (production number) is not available, procure Fan INV boards No. 513 and No. 514.

