

December 2012

No. OCB447
REVISED EDITION-A

PARTS CATALOG

Series PKFY Wall Mounted

R410A / R407C / R22

Indoor unit
[Model names]

[Service Ref.]

PKFY-P63VKM-E

PKFY-P63VKM-E.TH

PKFY-P63VKM-ER1.TH

PKFY-P100VKM-E

PKFY-P100VKM-E.TH

PKFY-P100VKM-ER1.TH

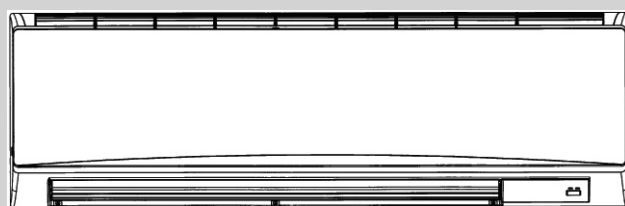
Revision:

- PKFY-P63/100VKM-ER1.TH have been added in REVISED EDITION-A.
- Some descriptions have been modified.

- Please void OCB44.

Note:

- RoHS compliant products have <G> mark on the spec name plate.



INDOOR UNIT

CONTENTS

1. RoHS PARTS LIST 2
2. OPTIONAL PARTS 6

SERVICE MANUAL (OCH447)

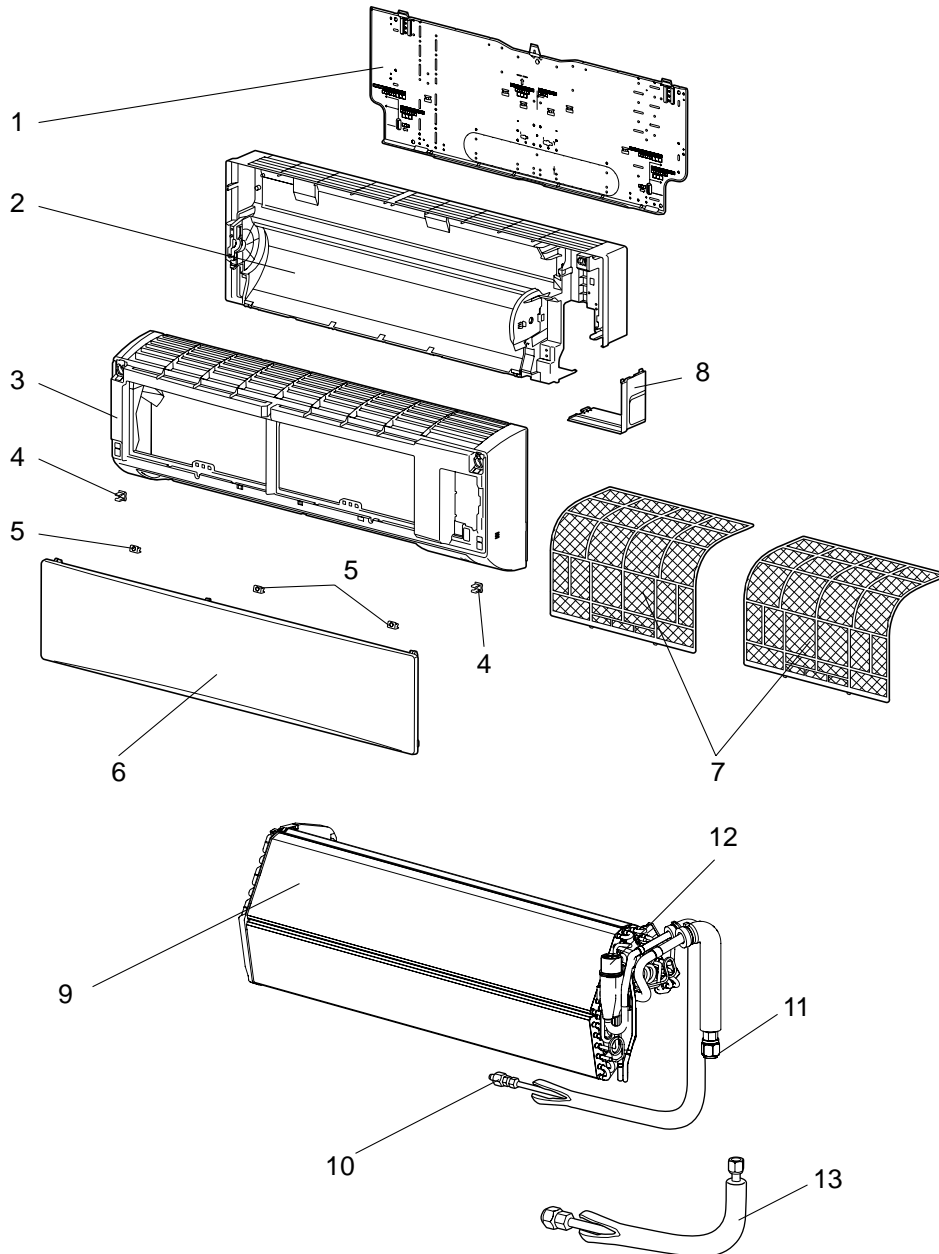
PANEL AND HEAT EXCHANGER PARTS

PKFY-P63VKM-E.TH

PKYF-P100VKM-E.TH

PKFY-P63VKM-ER1.TH

PKFY-P100VKM-ER1.TH



RoHS PARTS LIST

No.	RoHS	Part No.	Part Name	Specification	Q'ty/unit				Remarks (Drawing No.)	Wiring Diagram Symbol
					PKFY-P-VKM-E.TH		PKFY-P-VKM-ER1.TH			
					63	100	63	100		
1	G	E12 C92 970	INSTALLATION PLATE		1	1	1	1		
2	G	E12 C92 234	BOX		1	1	1	1		
3	G	E17 518 000	PANEL ASSEMBLY		1	1	1	1		
4	G	E12 408 142	CATCH		2	2	2	2	2pcs/set	
5	G	E12 C92 067	SCREW CAP		3	3	3	3	3pcs/set	
6	G	E12 C92 010	FRONT PANEL (NW)		1	1	1	1		
7	G	E12 C92 100	CATECHIN AIR FILTER		2	2	2	2		
8	G	E12 C92 975	CORNER BOX R		1	1	1	1		
9	G	E17 518 620	HEAT EXCHANGER		1		1			
	G	E17 519 620	HEAT EXCHANGER			1		1		
10	G	E12 527 667	UNION (LIQ)		1	1	1	1		
11	G	E12 C92 666	UNION (GAS)		1	1	1	1		
12	G	E17 518 640	LINEAR EXPANSION VALVE		1		1			LEV
	G	E17 519 640	LINEAR EXPANSION VALVE			1		1		LEV
13	G	E17 518 980	JOINT ASSEMBLY		1	1	1	1		

RoHS PARTS LIST

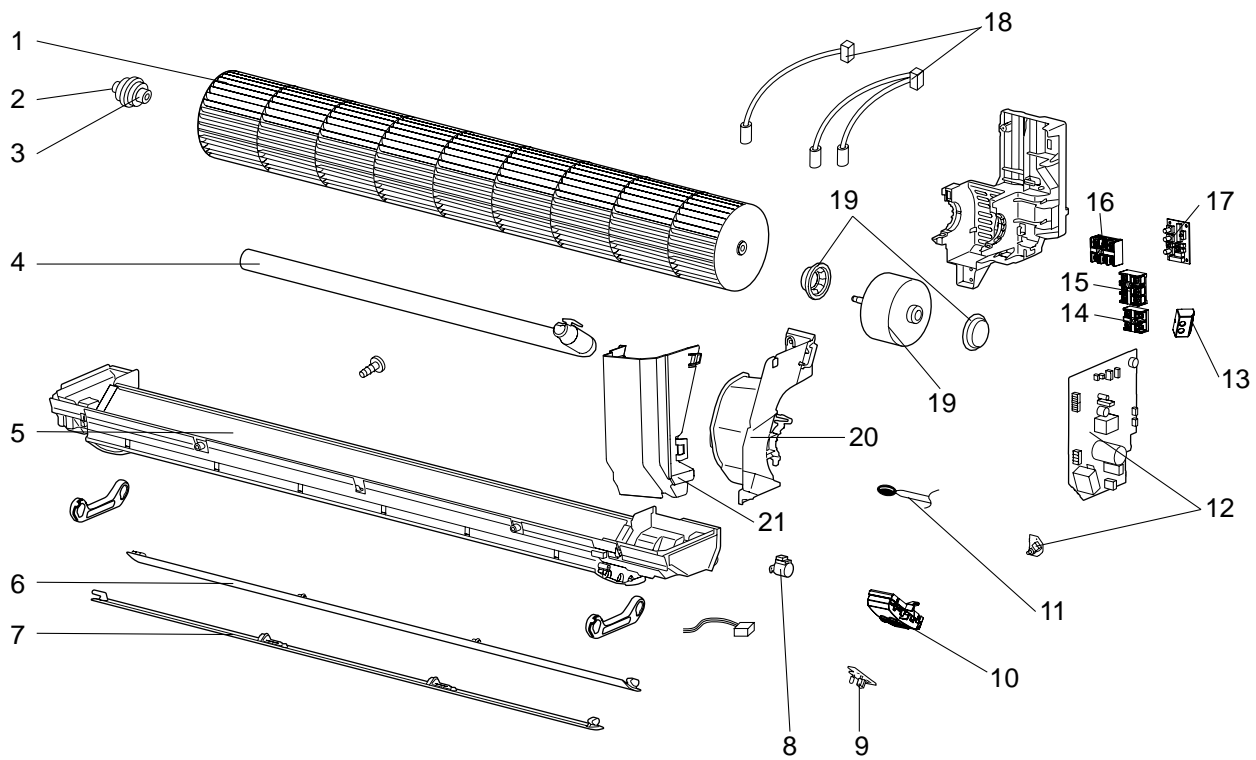
FUNCTIONAL PARTS

PKFY-P63VKM-E.TH

PKYF-P100VKM-E.TH

PKFY-P63VKM-ER1.TH

PKFY-P100VKM-ER1.TH



RoHS PARTS LIST

Part numbers that are circled are not shown in the illustration.

No.	RoHS	Part No.	Part Name	Specification	Q'ty/unit				Remarks (Drawing No.)	Wiring Diagram Symbol
					PKFY-P-VKM-E.TH		PKFY-P-VKM-ER1.TH			
					63	100	63	100		
1	G	E12 C92 302	LINE FLOW FAN		1	1	1	1		
2	G	E12 751 509	BEARING MOUNT		1	1	1	1		
3	G	E12 001 504	SLEEVE BEARING		1	1	1	1		
4	G	E12 408 702	DRAIN HOSE		1	1	1	1		
5	G	E17 518 235	NOZZLE ASSEMBLY		1	1	1	1		
6	G	E12 C92 040	VANE UPPER		1	1	1	1		
7	G	E12 C92 041	VANE LOWER		1	1	1	1		
8	G	E12 749 303	VANE MOTOR		1	1	1	1		MV
9	G	E17 518 468	RECEIVER P.C.BOARD		1	1	1	1		W.B.
10	G	E12 C92 095	RECEIVER HOLDER		1	1	1	1		
11	G	E17 518 308	ROOM TEMP. THERMISTOR		1	1	1	1		TH21
12	G	E17 518 447	INDOOR CONTROLLER BOARD		1	1				I.B., S.B.
	G	E17 879 447	INDOOR CONTROLLER BOARD				1	1		I.B., S.B.
13	G	E17 518 782	SWITCH HOLDER		1	1	1	1		
14	G	E17 249 375	TERMINAL BLOCK	2P(1,2)	1	1	1	1		TB15
15	G	E17 519 375	TERMINAL BLOCK	3P(M1,M2,S)	1	1	1	1		TB5
16	G	E17 518 375	TERMINAL BLOCK	3P(L,N,⊕)	1	1	1	1		TB2
17	G	E17 518 456	ADDRESS BOARD		1	1	1	1		A.B.
18	G	E17 518 307	THERMISTOR		1	1	1	1		TH22/23, TH24
19	G	E12 C92 300	FAN MOTOR		1	1	1	1		MF
20	G	E12 C92 333	MOTOR BAND		1	1	1	1		
21	G	E17 518 541	WATER COVER		1	1	1	1		
22	G	E17 518 087	CABLE ASSY (ADDRESS)		1	1	1	1		
23	G	E12 A49 382	FUSE	3.15A 250V	1	1	1	1		FUSE

2**OPTIONAL PARTS****2-1. WIRELESS REMOTE CONTROLLER**

Part No.	PAR-FL32MA
----------	------------

2-2. WIRED REMOTE CONTROLLER (MA REMOTE CONTROLLER)

Part No.	PAR-21MAA PAR-30MAA PAR-31MAA
----------	-------------------------------------

2-3. WIRED REMOTE CONTROLLER (ME REMOTE CONTROLLER)

Part No.	PAR-F27MEA
----------	------------

2-4. DRAIN LIFT UP MECHANISM

Part No.	PAC-SH94DM-E
----------	--------------

MITSUBISHI ELECTRIC CORPORATION

HEAD OFFICE : TOKYO BLDG., 2-7-3, MARUNOUCHI, CHIYODA-KU TOKYO 100-8310, JAPAN