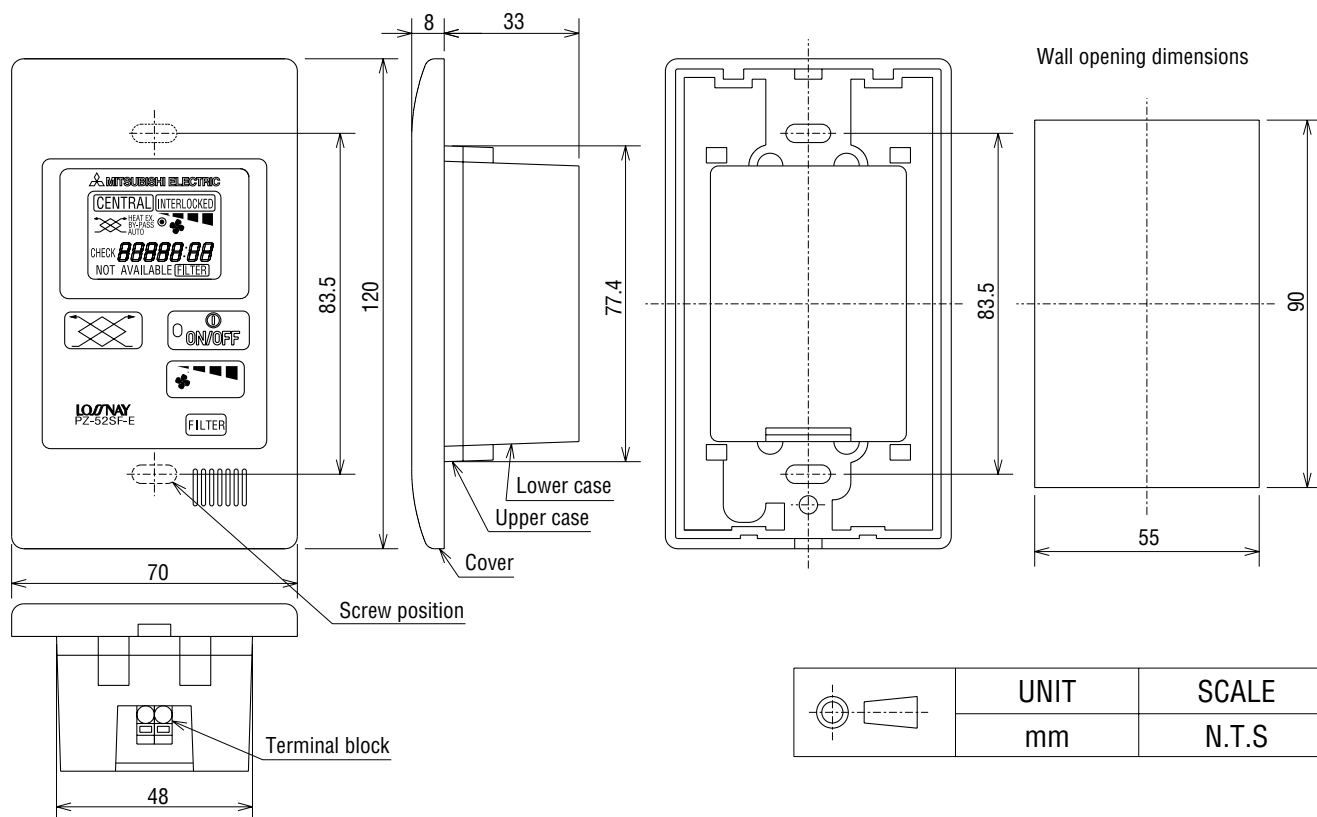


TYPE	LOSSNAY REMOTE CONTROLLER	VOLUME	
MODEL	PZ-52SF	SIGN	

■ Specifications

Model	PZ-52SF
Power supply requirement	Input voltage 17-30 VCD, 0.02 A Power received from an outdoor unit or power supply unit via M-NET transmission line.
Control signal	Serial signal communication (M-NET transmission)
Transmission line	Non-polarized 2-wire VCTF or CVV (2-core) 0.75-1.25 mm ² or equivalent.
Total wiring length	500 m maximum
Number of controllable Lossnay units	16 Lossnay units maximum
Environmental condition	Temperature: 0 to 40 °C Humidity: no more than 90 % RH (no condensation)
Weight	0.12 kg
Color	Munsell 4.48Y7.92/0.66

■ Drawings and Dimensions

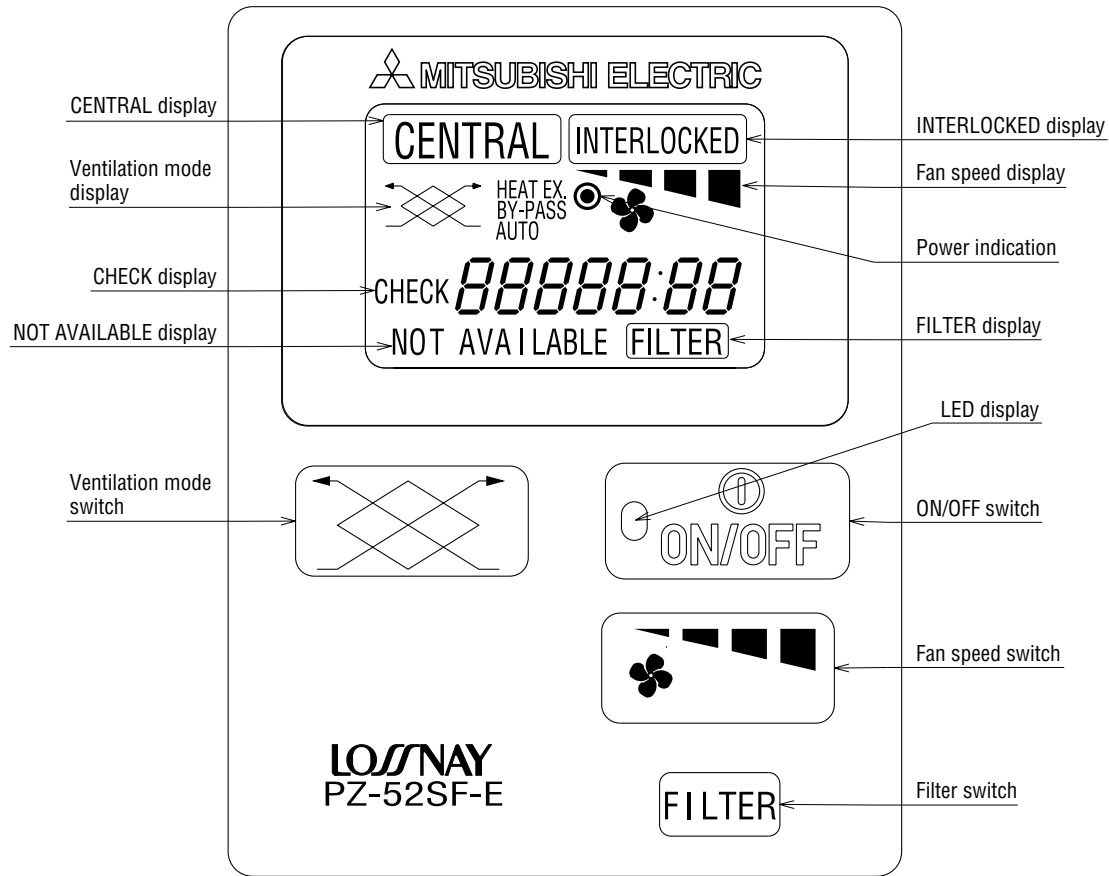


- * Use the cable of transmission line specified below.
Cable type: VCTF or CVV (2-core) 0.75-1.25 mm² or equivalent.
CVV is a control cable which is sheathed in polyvinyl chloride with polyvinyl insulated wires inside.
- * If you need to use a cable extension longer than 10 m, select an electric wire that meets the following specifications.
Wire specification: Shielding wire CVVS or CPEVS 1.25-2.00 mm² or equivalent.

* Specifications subject to change without notice.

SPECIFICATIONS	DATE	TYPE MODEL	LOSSNAY REMOTE CONTROLLER	
	15-Mar.-01		PZ-52SF	
MITSUBISHI ELECTRIC CORPORATION	NUMBER	No. CE018A	1/2	

■ Names and Functions of various parts



User operation function	ON/OFF operation	
	Fan speed selecting High/Low	
	Ventilation mode selecting	Heat exchange operation By-pass operation Automatic (heat ex./by-pass) operation
	Reset the filter sign display	
Monitor function	Power indication	Goes on when the remote controller is supplied appropriate power.
	ON/OFF lamp (LED display)	Goes on during ON operation (Yellow). Flashes during malfunction occurred.
	Fan speed display	Selecting fan speed is displayed.
	Ventilation mode status display	Selecting ventilation mode status is displayed. (HEAT EX./BY-PASS/AUTO)
	[INTERLOCKED] display	When the Lossnay starts off by interlocked indoor unit or external signal.
	[CENTRAL] display	Goes on during remote operation prohibited.
	[FILTER] display	When the operation time reaches at the filter-cleaning time.
	[Check] display	Check code and unit address which occur malfunction are displayed.
[NOT AVAILABLE] display	When a button is pressed for a function which the Lossnay unit cannot perform.	

* Specifications subject to change without notice.

FUNCTIONS	DATE	TYPE MODEL	LOSSNAY REMOTE CONTROLLER PZ-52SF	
	15-Mar.-01			
MITSUBISHI ELECTRIC CORPORATION	NUMBER	No. CE018A	2/2	