

# **Installation Instructions**

## **Procon**

### **FRT02**

## Connection and Operating Details Procon FRT02 and FRT02+

The Procon FRT02 and FRT02+ interfaces allow external run/fault monitoring and remote on/off control on either 'A'-Control split air conditioner units or City-Multi (Y or R series) units.

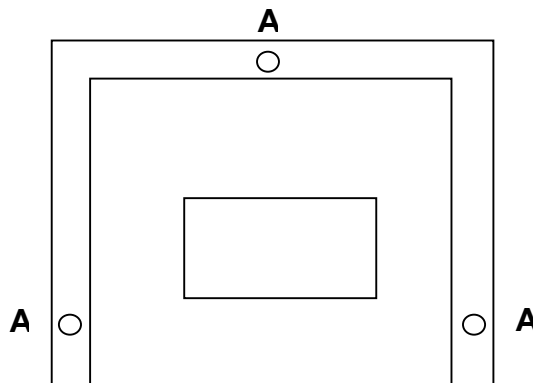
The on/off condition and error status are provided as volt-free relay contacts.

Contact closure Inputs are provided for on/off control of the units. These inputs must be driven from external volt free contacts.

The equipment is designated as a 'Sensing Control', an 'Incorporated Control' and a 'Type 1 Action Control'

### Mounting Details:

The unit must be mounted on a flat surface (wall / panel) and should be attached with screws using the three holes 'A' in the external flange. The temperature of the mounting surface should be less than 30 degrees C.



### Interconnections:

Three following wiring looms are provided with the equipment.

- A) A five wire loom with an 8 pin connector on one end and two connectors (9-pin and 4-Pin) on the other.
- B\*) A five wire loom with an 8-Pin connector on one end and a 5-Pin at the other.
- C\*) A three wire loom with 3-pin connectors at each end.

\* Looms (B) and (C) only supplied with FRT02+

Wiring connections must be made before the unit is mounted.

## **Installation Details – ‘A’-Control units.**

Disconnect all supplies to the air conditioner unit before installing the FRT02.

Connect loom A to the 8-Pin white connector J3 on the FRT02.  
Connect the other end of the loom to CN90 (9-Pin) and CN41 (4-Pin) on the ‘A’ control indoor unit main board.

Terminals TB1 provide volt free contact closure when the unit is running.  
Terminals TB2 provide volt free contact closure when the unit is in a fault condition. This contact will remain closed after the fault condition is removed until the unit is switched off.

Maximum switching capacity for TB1 and TB2 is 40 V d.c. at 50mA.  
Terminals TB3 are a volt free input which mimics the operation of the on/off push button on the wall controller. Successive contact closures will toggle the unit on and off.

(FRT02+ only)

If defined on/off operation is required then loom C may be fitted to J7 on the FRT02+ and CN32 on the indoor unit. In this mode TB3 will be inoperative.  
If TB4-1 is connected to TB4-2 and TB5-1 is connected to TB5-2 then the unit will turn on. In any other state it will be off.

## **Installation Details – Y series and R series units. (FRT02+ only)**

Disconnect all supplies to the air conditioner unit before installing the FRT02+.

Connect loom B to the 8-Pin white connector J3 on the FRT-02+  
Connect the other end of the loom to CN51 (5-Pin) on the indoor unit main board.

Terminals TB1 provide volt free contact closure when the unit is running.  
Terminals TB2 provide volt free contact closure when the unit is in a fault condition. This contact will remain closed after the fault condition is removed until the unit is switched off.

Maximum switching capacity for TB1 and TB2 is 40 V d.c. at 50mA  
Terminals TB3 are a volt free input which mimics the operation of the on/off push button on the wall controller. Successive contact closures will toggle the unit on and off.

If defined on/off operation is required then loom C may be fitted to J7 on the FRT02+ and CN32 on the indoor unit. In this mode TB3 will be inoperative.  
If TB4-1 is connected to TB4-2 and TB5-1 is connected to TB5-2 then the unit will turn on. In any other state it will be off.