



Mitsubishi Electric Air-conditioner Network System

Central Controller

Model: G-50A Operation Manual (Initial Setting Tool Version)

Contents

1	Introduction	1
1-1	Conventions Used in this Manual	1
1-2	Computer Requirements	1
2	Installing and Uninstalling Initial Setting Tool	2
2-1	Installing Initial Setting Tool	2
2-2	Uninstalling Initial Setting Tool	3
2-3	Starting and Closing the Program	3
3	Connecting	4
3-1	Connecting to the G-50A	4
3-1-1	Connecting to the front of the G-50A	4
3-1-2	Connecting to the rear of the G-50A	4
3-1-3	Connecting via a hub	4
4	Program Layout and Utilities	5
4-1	Layout of Main Window	5
4-2	Utilities	6
4-2-1	Reading setting data	6
4-2-2	Saving setting data	6
4-2-3	Making a new connection	6
4-2-4	Help/Version Information	7
5	Initial Setting	8
5-1	Basic Setting	8
5-1-1	G-50A Unit Setting	8
5-1-2	Network Setting	9
5-1-3	M-NET Setting	10
5-1-4	External Input Setting	10
5-2	Current Date and Time Setting	12
5-3	Group Setting	13
5-3-1	Registering air conditioner units in group	13
5-3-2	Setting the Group Name	14
5-4	Interlocked Setting	15
5-5	Block Setting	16
5-5-1	Registering a group in a block	16
5-5-2	Registering a block name	16
6	Mail Settings	17
6-1	Mail Basic Settings	17
6-1-1	Setting the G-50A mail address	17
6-1-2	Setting the IP Address for the Outgoing Mail Server	17
6-1-3	Setting the IP Address for the Incoming Mail Server	18
6-1-4	Setting the Mail Receipt Interval	18
6-1-5	Setting the User ID and Password	18
6-1-6	Setting the Mail Addresses of Mail Recipients	18
6-2	Setting the Error Mail Destinations	19
6-2-1	Setting the Title of the Error Mail	19
6-2-2	Setting the Recipient of the Error Mail	19
6-3	Setting Error Codes	20
6-3-1	Registering error codes in User Settings	20

Before using the Initial Setting Tool, please read this Operation Manual carefully to ensure correct operation. Store this Operation Manual in a location that is easy to find.

1 Introduction

Initial Setting Tool is the software that is used to connect, via a LAN, to a Central Controller G-50A and perform the initial setting for the air conditioner group.

Previously it was necessary to input each type of initial setting such as group registration and group name on site. Now, this tool can be used to create initial setting data beforehand and complete the initial setting on site simply by sending the data to the G-50A. By doing this, you can achieve a reduction in the time spent onsite performing the initial setting operations.

1-1 Conventions Used in this Manual

Unless otherwise specified, Windows refers to Windows 98, Windows Me, Windows 2000 and Windows XP.

Note: Windows is a registered trademark or trademark of Microsoft Corporation USA in the United States and other countries.

Click refers to the action of positioning the mouse cursor on the object (such as button or folder) and pressing down and releasing the left mouse button once. Double click refers to the action of pressing down and releasing the left mouse button twice in quick succession.

Unless otherwise specified, the example screen images used in this manual are Windows 2000 screen images.

The K transmission converter (PAC-SC25KAA) and OA processing unit (LOSSNAY) are not included in systems shipped to North America (USA & Canada).

1-2 Computer Requirements

To run Initial Setting Tool, your computer must comply with the following requirements.

Table 1-1 Computer Requirements for Initial Setting Tool

Required items	Specification
CPU	At least Pentium 133 MHz
OS	Windows 98/Me/2000/XP
Memory	At least 64 Mbytes
Hard disk	At least 20 Mbytes of available space
Onboard LAN port or LAN card	One (We recommend a dedicated 10BASE-T*)
Other necessary items	CD-ROM drive (necessary for installation) Mouse or other pointing device

*Note: When connecting to the G-50A with a cross cable, it may not be possible to obtain a successful connection if your PC's LAN port automatically switches between 10/100BASE-T. If this situation arises, connect the PC to the G-50A via a hub using a straight cable.

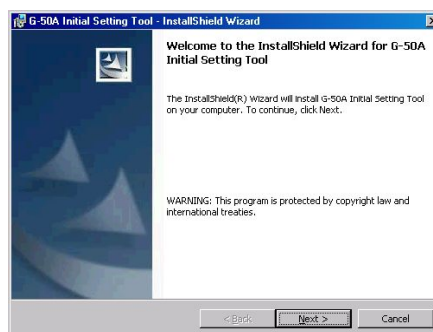
2 Installing and Uninstalling Initial Setting Tool

Given below is an explanation on how to install and uninstall Initial Setting Tool, and start and close the program.

2-1 Installing Initial Setting Tool

- (1) Insert Initial Setting Tool Setup Disk into the CD-ROM of the PC you are installing the program on. Preparation for setup will begin automatically and the dialog shown on the right will appear on screen.

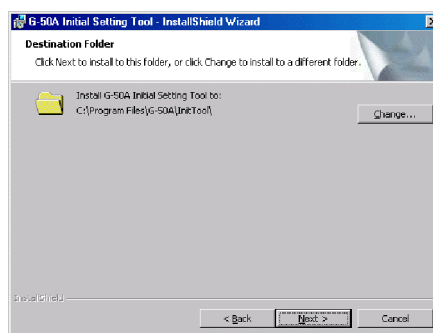
Click [Next] to proceed with installing Initial Setting Tool and advance to the next dialog.



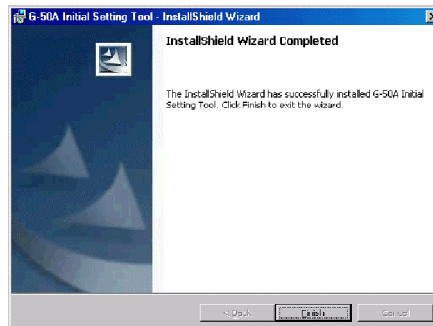
- (2) The next dialog will appear showing the destination folder to which Initial Setting Tool will be installed. To choose the default folder address displayed on the dialog, click [Next]. To modify the folder address, click [Change]. After specifying your choice of folder, click [Next].

The default destination folder address is:

C:\Program Files\G-50A\InitTool\

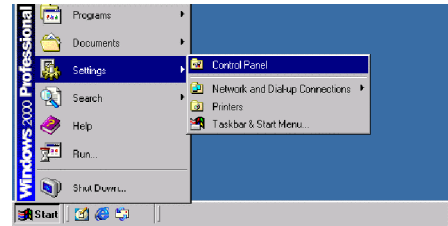


- (3) When the setup program has installed the program in the selected destination folder, the dialog shown on the right will appear. Click [Finish] to complete the installation process.

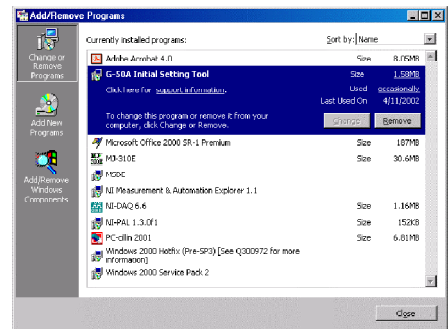


2-2 Uninstalling Initial Setting Tool

- (1) To uninstall Initial Setting Tool, click [Start], point to [Settings] and click [Control Panel] to open Control Panel.

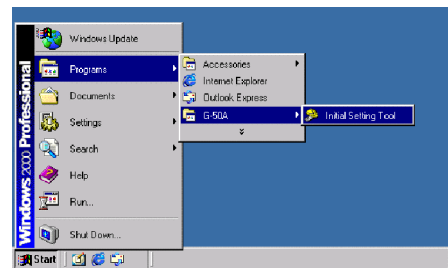


- (2) Double click [Add/Remove Programs] displayed in the Control Panel window. A list of installed programs will appear. Click [G-50A Initial Setting Tool] and click [Remove] to uninstall Initial Setting Tool.



2-3 Starting and Closing the Program

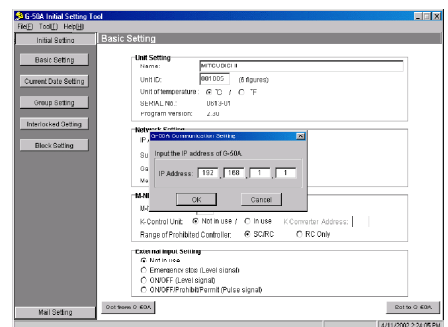
- (1) To start the program, click [Start], point to [Programs], point to [G-50] and click [Initial Setting Tool].



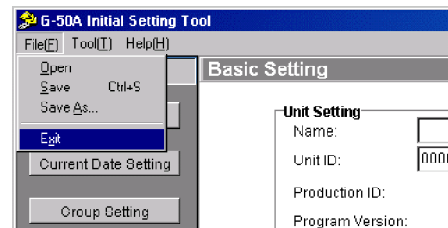
- (2) When Initial Setting Tool starts, an IP address input dialog will appear. Enter the IP address of the G-50A to be connected, and click [OK].

If you do not plan to connect to a G-50A, and only wish to create setting data, simply click [OK].

When shipped, the G-50A's IP address is set to [192.168.1.1]. In order to successfully establish communication with the G-50A, the IP address of your PC must be [192.168.1.*].



- (3) To close the program, click [File] then [Exit] from the Initial Setting Tool menu.



3 Connecting

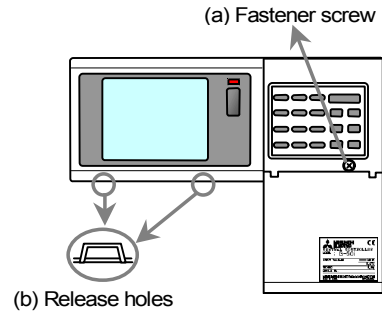
Given below is an explanation on how to connect Initial Setting Tool PC to the G-50A.

Before connecting Initial Setting Tool PC, set the PC's IP Address consistent with the G-50A. For example, if IP Address of G-50A is [192.168.1.1] (factory setting), set the PC's IP Address to [192.168.1.201].

3-1 Connecting to the G-50A

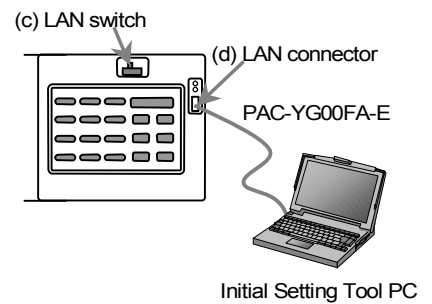
3-1-1 Connecting to the front of the G-50A

- (1) When connecting to the front of the G-50A, first remove the fastener screw (a) from the main unit cover with a Philips screwdriver. Next, insert a slotted screwdriver into the release holes (b) located at the bottom of the main unit, and twist to release the cover.



- (2) Once the cover is removed, switch the LAN switch (c) to the left-hand side (B side) and connect the dedicated LAN connection cable (PAC-YG00FA-E) to the LAN connector (d). Connect the other end of the LAN cable to Initial Setting Tool (the PC).

Once the initial setting is complete, always return LAN switch (c) to the right-hand side (A side) and replace the cover. Failing to return the LAN switch prevents the G-50A from communicating with the connected machines via the Ethernet terminal located at the rear.



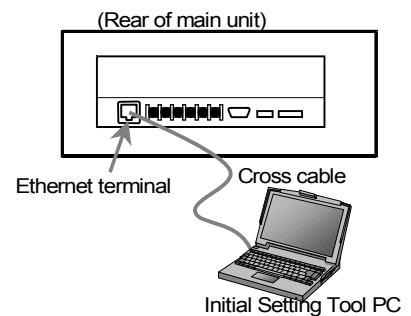
Note: When connecting to the G-50A with a cross cable, it may not be possible to obtain a successful connection if your PC's LAN port automatically switches between 10/100BASE-T. If this situation arises, connect the PC to the G-50A via a hub in the same way a hub is used in the system shown in 3-1-3.

When replacing the cover, ensure that the correct cover is used.

3-1-2 Connecting to the rear of the G-50A

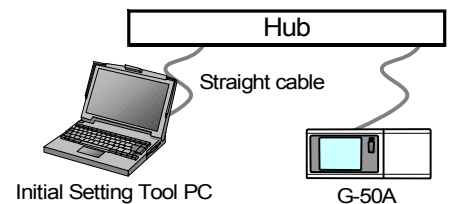
- (1) Connect Initial Setting Tool to the Ethernet terminal located at the rear of the G-50A using a cross cable for 10BASE-T.

Note: When connecting to the G-50A with a cross cable, it may not be possible to obtain a successful connection if your PC's LAN port automatically switches between 10/100BASE-T. If this situation arises, connect the PC to the G-50A via a hub in the same way a hub is used in the system shown in 3-1-3.



3-1-3 Connecting via a hub

- (1) When the LAN wiring for the G-50A is complete, connect via a hub using a straight cable for 10BASE-T.

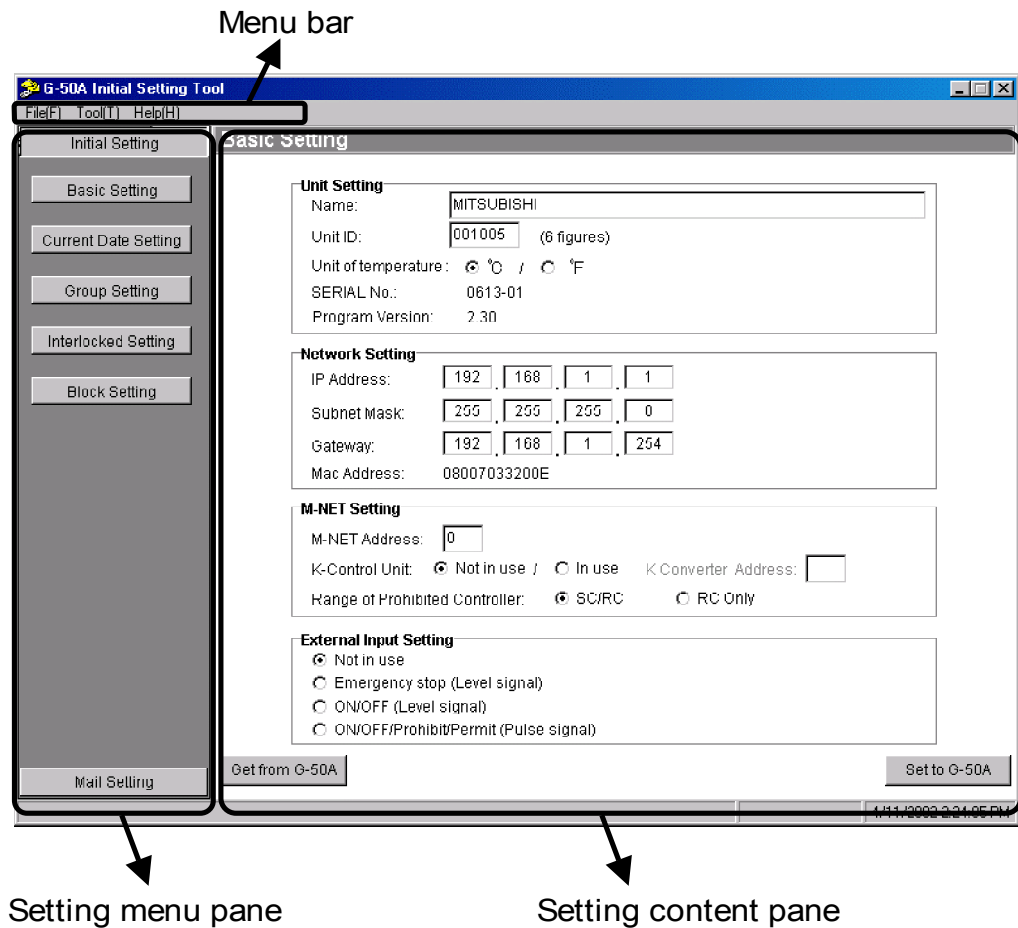


4 Program Layout and Utilities

Given below is an explanation of the layout of the Initial Setting Tool main window and an explanation on how to use the various utilities available from the menu bar.

4-1 Layout of Main Window

The main window of Initial Setting Tool consists of three parts: menu bar, setting menu pane and setting content pane. The menu bar can be used to run the various utilities such as saving and reading initial setting data. When performing each type of setting, click the type of setting from the setting menu pane and input the setting data in the setting content pane.



4-2 Utilities

Given below is an explanation of each type of utility that can be selected from the menu bar.

4-2-1 Reading setting data

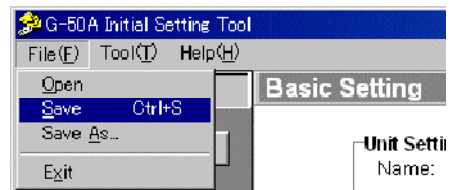
- (1) Click [File(F)]-[Open] from the menu bar.
- (2) Use the Select Directory dialog to select the directory in which the setting data was saved. The program reads the initial setting data and displays data in the setting content pane. Since all the setting data is read, there is no need to read the data again to display a different type of setting content.



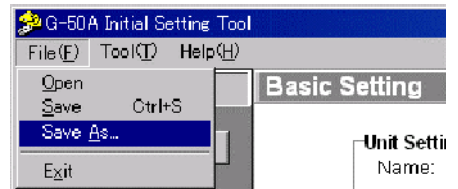
4-2-2 Saving setting data

- (1) To save the setting data to a directory in which data was saved the last time (or a directory from which the data was read), click [File(E)]-[Save], or press [Ctrl] + [S] on the keyboard. The program saves the setting data for all setting pages.

Note: Data that has not been changed from the default value will not be saved.

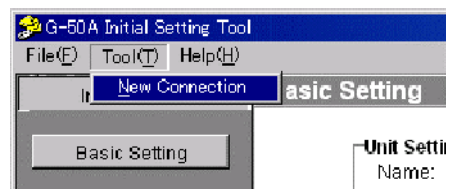


- (2) To save to a different directory, click [File(E)]-[Save As...] and use the Save Directory dialog to choose the directory in which you want to save the data.

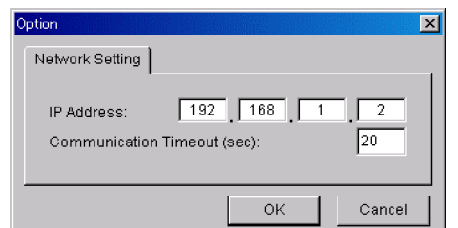


4-2-3 Making a new connection

- (1) When connecting to more than one G-50A on the same LAN, you can change the G-50A you are connected to by clicking [Tool(T)]-[New Connection].



- (2) A dialog to change the connection target address appears. Enter the IP address of the G-50A you want to set. If you want to change the communication timeout as well, change the value of [Communication Timeout(sec)]. (This setting does not need to be changed when connecting via a LAN. Adjust this value when using a circuit with a slow communication speed such as via a cellular phone.)



4-2-4 Help/Version Information

- (1) Click [Help(H)]-[Help] when you want to view this operation manual.
To view this manual, you need Adobe Systems Incorporated's Acrobat Reader Version 4.0 or higher.

Note: Acrobat is a registered trademark of Adobe Systems Incorporated.

- (2) You can check the version information of Initial Setting Tool by clicking [Help(H)]-[About G-50A].



5 Initial Setting

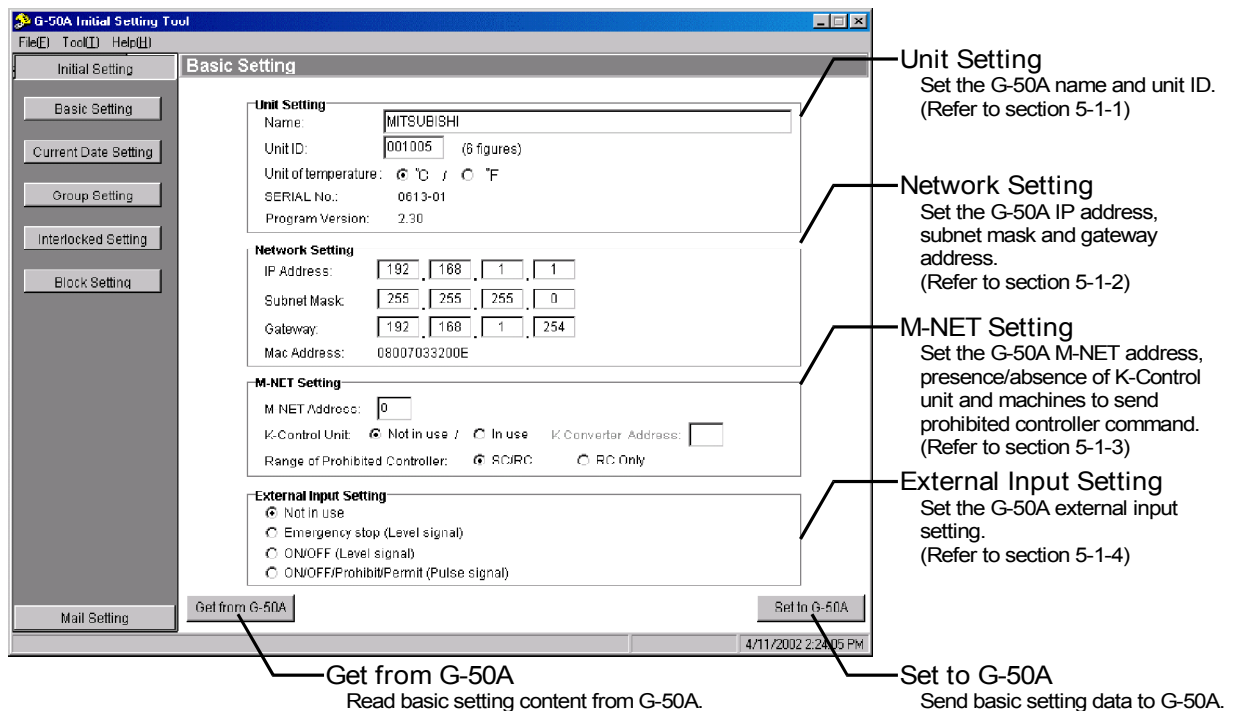
Given below is an explanation on how to set each type initial setting such as the G-50A main unit settings and group setting.

5-1 Basic Setting

Display the page needed to perform the G-50A basic setting by clicking [Initial Setting]-[Basic Setting] in the setting menu pane. On this page, you perform the basic setting such as the G-50A unit name, network setting and M-NET setting.

Click [Get from G-50A] to get data that is currently held by the G-50A unit, or click [Set to G-50A] to send setting data to the G-50A. After the basic setting content is sent to the G-50A, a message will appear asking whether or not to restart the G-50A. If you want the new setting content such as IP address to be immediately mirrored, then restart the G-50A as directed by the message.

Note: When restarting the G-50A, there will be a 2-3 minute delay before communication can be reestablished.



5-1-1 G-50A Unit Setting

In Unit Setting, set the G-50A name and unit ID.

- (1) Enter the G-50A unit name in the [Name] field. You may enter a maximum of 40 alphanumeric or symbol characters. The name set here is used on the display screen of the software that controls multiple G-50A units and for the name of the sender in the body of error messages.

Note: The following characters cannot be used in the name: < > & " '

- (2) Enter the G-50A unit ID in the [Unit ID] field. You must enter 6 numeric characters. Use this setting when you want to control multiple G-50A units with unit IDs. The unit ID that is entered here will be used on the display screen of the software that controls multiple G-50A units and for the sender ID in the body of error messages.
- (3) In the [Unit of temperature] field, click to select either Celsius (C) or Fahrenheit (F). This setting decides the temperature unit for the temperature setting and room temperature display that appears on the G-50A main unit and the browser window.
- (4) When [Get from G-50A] is clicked, the G-50A production ID will appear in the [SERIAL No.] field and the G-50A program version will appear in the [Program Version] field.

5-1-2 Network Setting

In Network Setting, set the G-50A IP address, subnet mask and gateway address. If connecting to the G-50A via a permanent LAN, consult with the network administrator before setting these addresses.

5-1-2-1 Settings for when the G-50A is connected to a dedicated LAN

- Enter the G-50A IP address in the [IP Address] field. If the LAN wiring has been newly set up, allocate IP addresses to the G-50A units in a sequential order starting with [192.168.1.1]. For example the first G-50A unit will receive an IP address of [192.168.1.1], the second G-50A unit will receive an IP address of [192.168.1.2] and so on.

The Web Monitor PC that monitors G-50A and the Initial Setting Tool PC will also require network addresses consistent with the rest of the LAN.

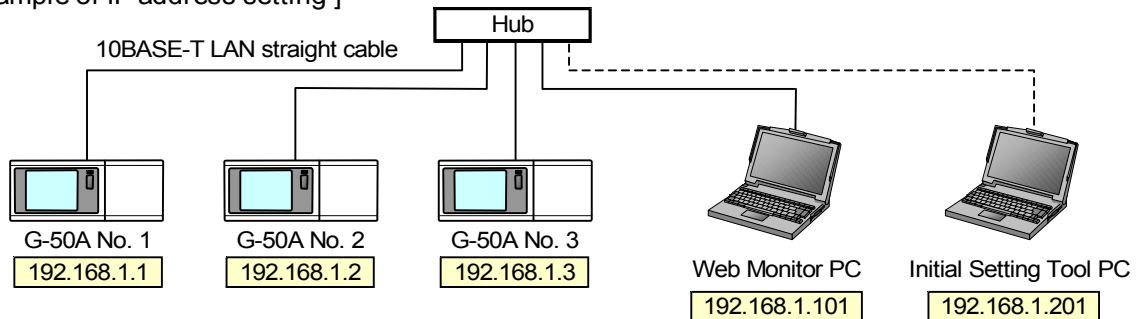
Note: When using a G-50A dedicated LAN, it is recommended to set the IP address as follows.

G-50A : Between [192.168.1.1] and [192.168.1.40]

Web Monitor PC : Between [192.168.1.101] and [192.168.1.150]

Initial Setting Tool PC : [192.168.1.201].

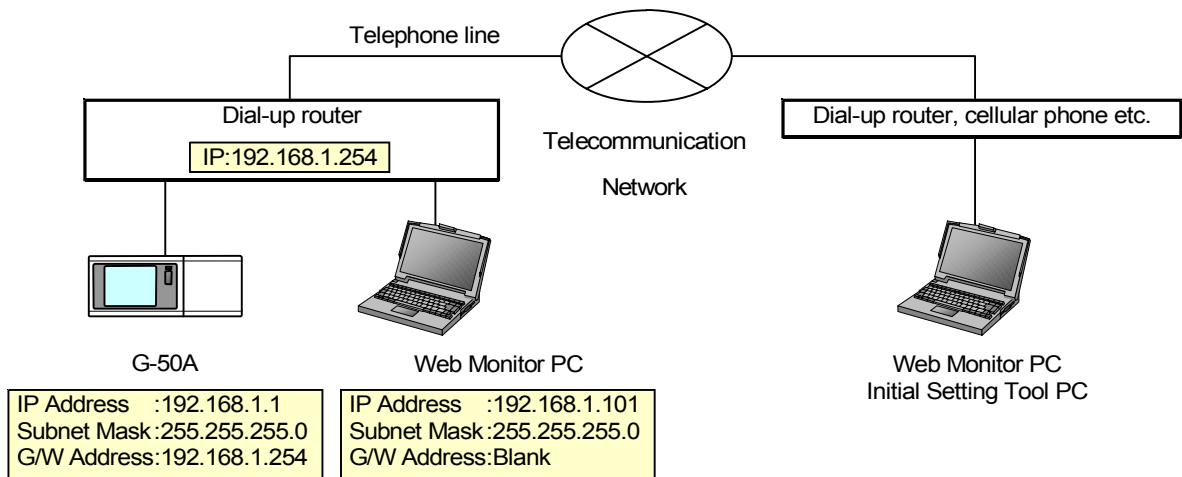
[Example of IP address setting]



Note: Some hubs have a dedicated port for connection with another hub. Connect the G-50A and Web Monitor PC to the normal ports.

- Enter the G-50A subnet mask in the [Subnet Mask] field. Normally, you should enter [255.255.255.0].
- When monitoring remotely via a dial-up router, enter the router IP address in the [Gateway] field. Leave the gateway address blank when not connecting via a dial-up router.

[Example of a Remote Monitoring System]



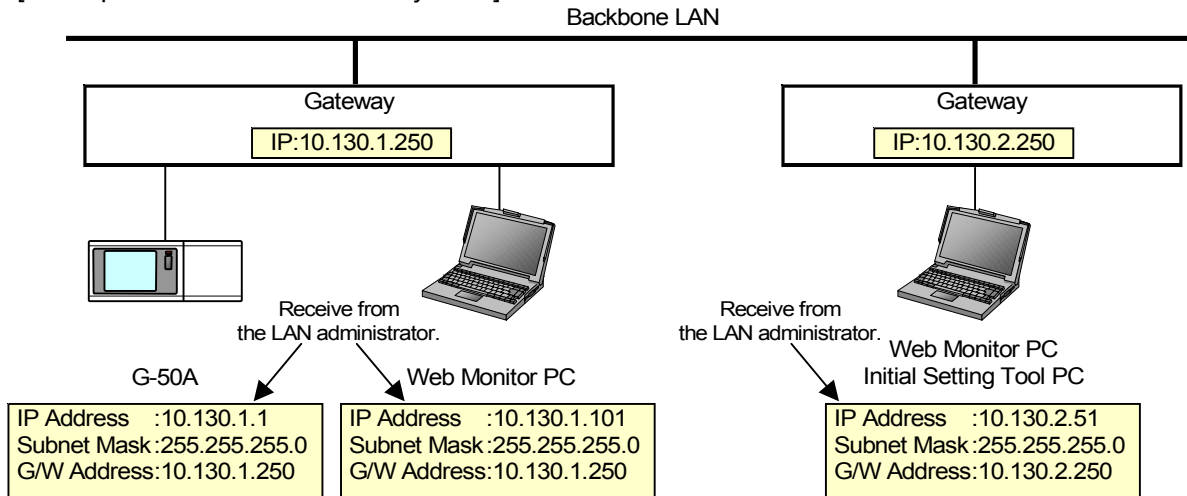
Note: It is recommended to set the dial-up router IP address to [192.168.1.254]. Refer to the dial-up router instruction manual for details of how to set the IP address.

Note: It is necessary to connect a modem (analog type or ISDN type) between the dial-up router and telephone line when using a dial-up router which does not have a built-in modem.

5-1-2-2 Settings for when the G-50A is connected to an existing LAN

When connecting the G-50A to an existing LAN, consult with the network administrator who is responsible for the LAN before setting the IP address, subnet mask, or gateway address.

[Example of a Permanent LAN System]



5-1-3 M-NET Setting

In M-NET Setting, set the G-50A M-NET address, whether or not a K-Control unit is present and which machines send the prohibited controller command.

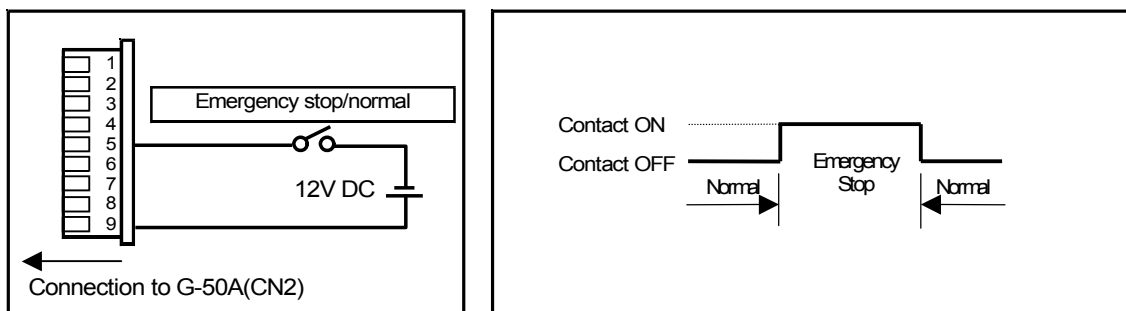
- (1) Enter the G-50A M-NET address in the [M-NET Address] field. Normally you should enter [0].
- (2) When K-Control air conditioners are connected, click [in use] in the [K-Control Unit] field and enter the M-NET address of K transmission converter in the [K Converter] field.
- (3) If prohibited controller (prohibiting local operation) has been set, this setting determines the scope of this setting's control, i.e. operation is prohibited for both the remote control and subordinate system controllers, or just for the remote control. Click [SC/RC] when you want prohibited controllers to include both subordinate system controllers and the remote control, or click [RC only] when you only want to prohibit operation on the remote control.

Note: Normally, you should select [SC/RC].

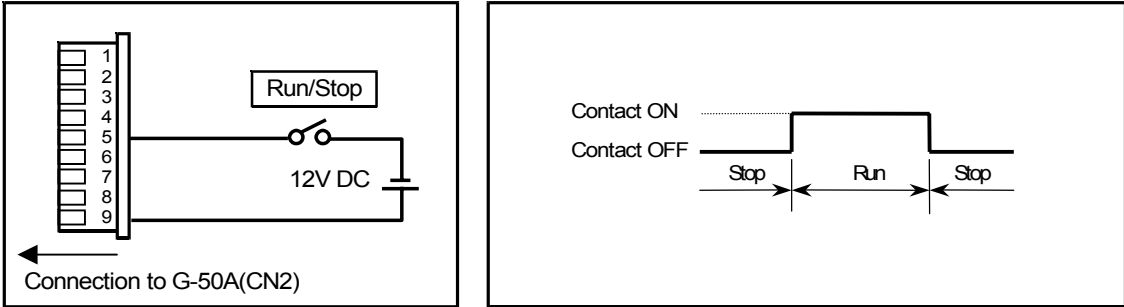
5-1-4 External Input Setting

In External Input Setting, set the G-50A external input function. By using external input functions, it is possible to stop and run multiple air conditioners connected to the G-50A via the separately sold external I/O adapter (Model: PAC-YG10HA-E) using level signals and pulse signals.

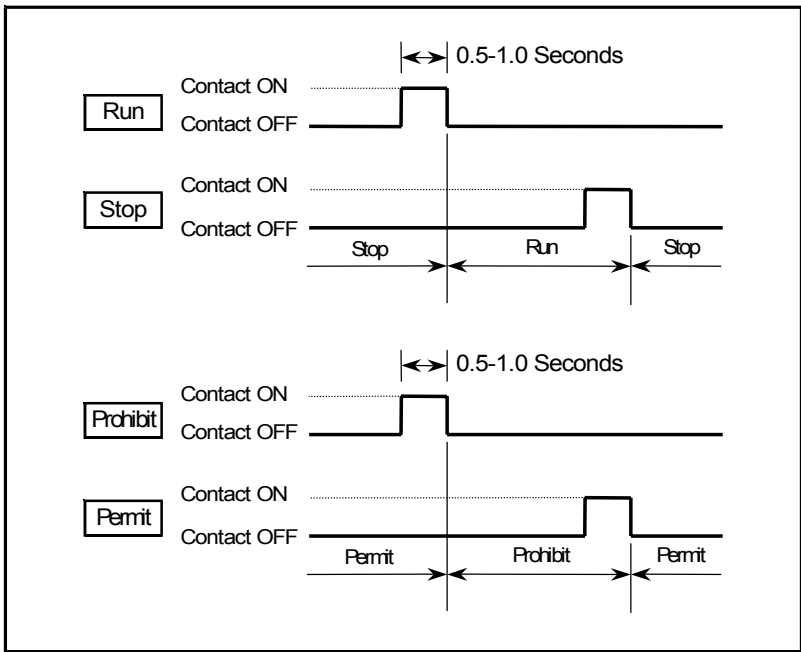
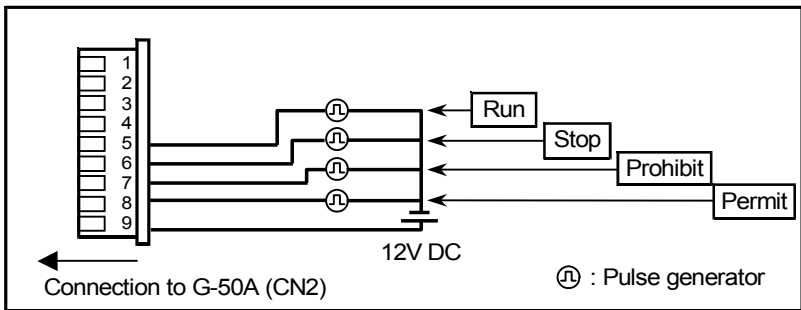
- (1) Select [Not in use] when not using the external input function.
- (2) Selecting [Emergency stop (Level signal)] makes it possible to stop multiple units by using a level signal. While this stop operation is being performed, operations such as running or stopping units are prohibited on the G-50A unit or remote control.



(3) Selecting [ON/OFF (Level signal)] makes it possible to run or stop multiple units using a level signal. In this mode, all air conditioner units connected to the G-50A will be run or stopped and run/stop operations will be prohibited on the G-50A unit or remote control.



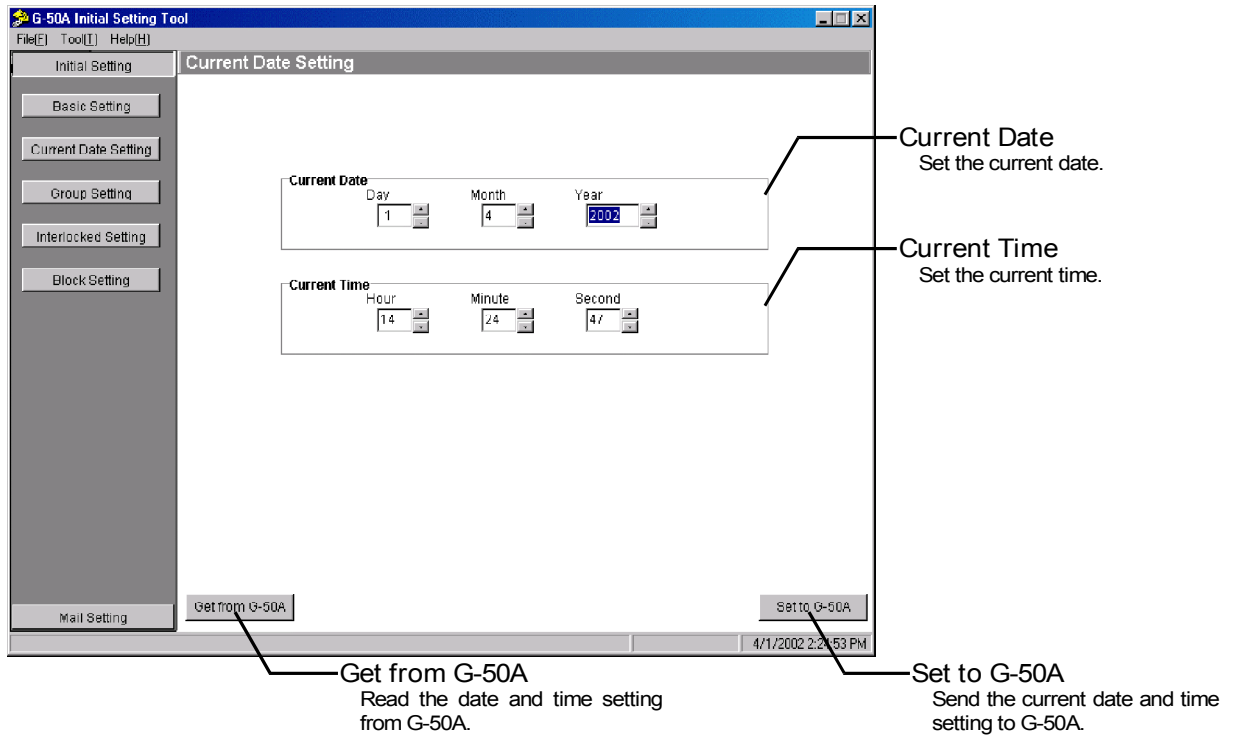
(4) Selecting [ON/OFF/Prohibit/Permit (Pulse signal)] makes it possible to use pulse signals to run multiple units, stop multiple units, prohibit local operation and permit local operation. In this mode, it is possible to freely operate the remote control except during the pulse signal input.



5-2 Current Date and Time Setting

Display the page needed to set the current date and time on the G-50A by clicking [Initial Setting]-[Current Date Setting] in the setting menu pane.

When this page opens, it will be displaying the date and time kept by the PC. Set the current date and time on the G-50A by clicking [Set to G-50A].



5-3 Group Setting

Display the page needed to set the air conditioner groups that the G-50A is connected to by clicking [Initial Setting]-[Group Setting] in the setting menu pane. On this page, you set the air conditioner group divisions that the G-50A is connected to and the group name.

When an air conditioner button is clicked for the first time, [UC] is displayed for the unit type. The unit type will be confirmed when the setting content is sent by clicking the [Get from G-50A] button and the start up process of each air conditioner unit has completed. To confirm the unit type, switch the G-50A unit to normal screen and get its data by clicking the [Get from G-50A] button. In the unit type field, either IC (indoor unit), LC (Lossnay) or FU (OA processing unit) will be displayed.

Indoor Unit or Ventilator Pieces
The number of indoor units or ventilators in the group is displayed.

Group Number
Enter the Group No. that the G50-A is registered to.

Remote Control/System Controller Pieces
The number of remote controls or system controllers in the group is displayed.

Group Name for Web Screen
Register the group name to show on the web screen.

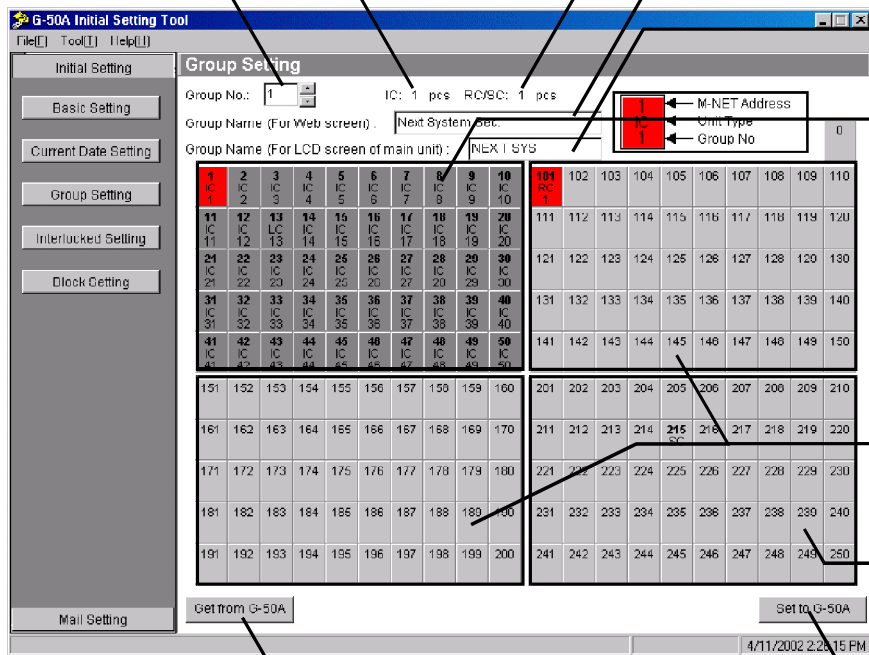
Group Name for Main Unit
Register the group name to show on main unit LCD screen.

Air Conditioner Buttons
Register the air conditioner units to be connected. After switching to G-50A normal mode, it is possible to get unit types other than UC.

UC: Unconfirmed
IC: Indoor unit (M-NET)
KIC: Indoor unit (K-Control)
AIC: Indoor unit (A-Control)
LC: Lossnay
FU: OA Processing unit (Interlocked setting)

Remote Control Buttons
Register the remote controls to be connected.
RC: Remote control

System Controller Buttons
Register the system controllers to be connected.
SC: System controller



Get from G-50A
Read the group setting from G-50A.

Set to G-50A
Send the group setting to G-50A.

5-3-1 Registering air conditioner units in group

- Enter the group number in the [Group No.] field and click the air conditioner button that has the air conditioner unit M-NET address on it. For example, when registering a unit with an M-NET address of [1] to group [1], set the value for the [Group No.] field to [1] and click on the button with M-NET address [1], so that it becomes selected. To cancel the selection, click on the button one more time and it will revert to being unselected. To register multiple air conditioner units in the same group, click on the buttons with the address you want to register as described above and the buttons will become selected.

Note: A maximum of 16 air conditioner units can be registered in one group.

- To register remote controls to a group, click on the remote control button that has the remote control M-NET address on it and the button will become selected.

Note: A maximum of 2 remote controls can be registered in one group.

Note: MA remote controls do not need to be registered to a group.

- To register system controllers to a group, click on the system controller button that has the system controller address on it and the button will become selected.

Note: The combined number of system controllers and remote controls cannot exceed four.

5-3-2 Setting the Group Name

- (1) Enter the group number that you wish to register a name for in the [Group No.] field and in the [Group Name (For Web screen)] field, set a group name to show on the Web screen. A maximum of 20 alphanumeric or symbol characters can be used for this name.

Note: The following characters cannot be used in the group name: < > & " '

- (2) Next, set the group name to show on the main unit LCD screen in the [Group Name (For LCD screen of main unit)] field. A maximum of 10 numbers, uppercase letters, hyphens, or spaces can be used for this name.

5-4 Interlocked Setting

Display the page needed to perform the G-50A interlocked setting by clicking [Initial Setting]-[Interlocked Setting] in the setting menu pane. On this page, you perform the setting for the ventilator, which operates by interlocking with the running and stopping of the indoor unit.

Click [Get from G-50A] to get data currently stored on the G-50A, or click [Set to G-50A] to send setting data to the G-50A.

Select Ventilator
Select the ventilator to be interlocked.

Select Indoor Unit
Select indoor unit to operate with ventilator.

Get from G-50A
Read interlocked setting from G-50A.

Set to G-50A
Send interlocked setting to G-50A.

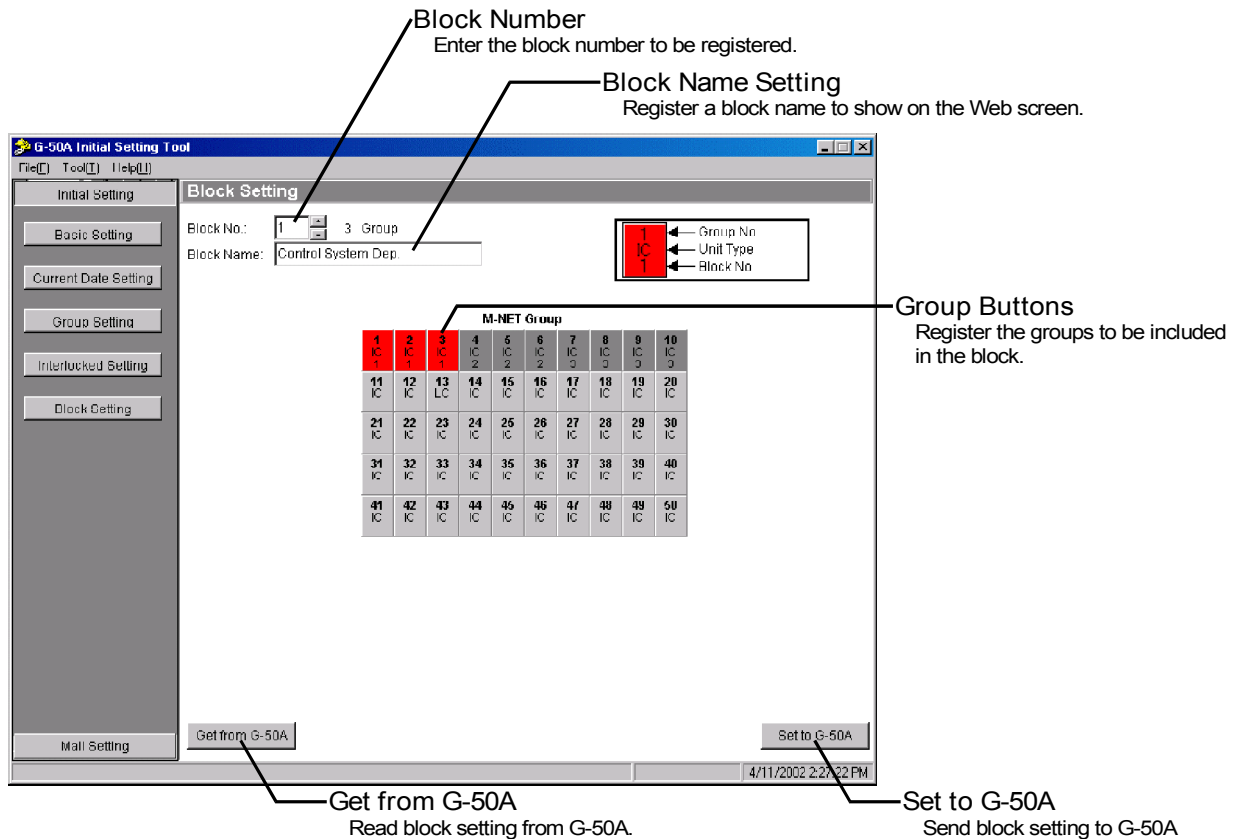
- (1) From the [Interlocked LOSSNAY or OA processing unit] field, select, by clicking, the ventilator whose run/stop operations you want to interlock with the run/stop operations of an indoor unit. To cancel a selection, click it one more time and it will revert to being unselected.
- (2) Select, by clicking, the indoor unit to operate with the ventilator from the [Air-conditioners operating with LOSSNAY] field. To cancel a selection, click it one more time and it will revert to being unselected.

Note: A maximum of 16 indoor units can be registered to operate with one ventilator.

5-5 Block Setting

Display the page needed to perform the G-50A block setting by clicking [Initial Setting]-[Block Setting] in the setting menu pane. On this page, you perform the settings required for the block that the groups make up. Performing the block setting makes it possible to monitor, from a Web Monitor screen, a list of operation statuses of groups belonging to the block and collectively carry out operations for the entire block.

Click [Get from G-50A] to get data currently stored on the G-50A, or click [Set to G-50A] to send setting data to the G-50A.



5-5-1 Registering a group in a block

Enter the block number in the [Block No.] field and click the group button that has the air conditioner group on it. For example, when registering a unit of M-NET Group [1] to Block [1], set the Block No. field to [1] and click on the button with the group number [1], and it becomes selected. To cancel the selection, click on the button one more time and it will revert to being unselected. To register multiple groups in the same block, click on the group buttons that you want to register as described above and the buttons will become selected.

5-5-2 Registering a block name

Enter the block number that you wish to register a name for in the [Block No.] field and in the [Block Name] field, set a block name to show on the Web screen. A maximum of 20 alphanumeric or symbol characters can be used for this name.

Note: The following characters cannot be used in the block name: < > & " ' "

6 Mail Settings

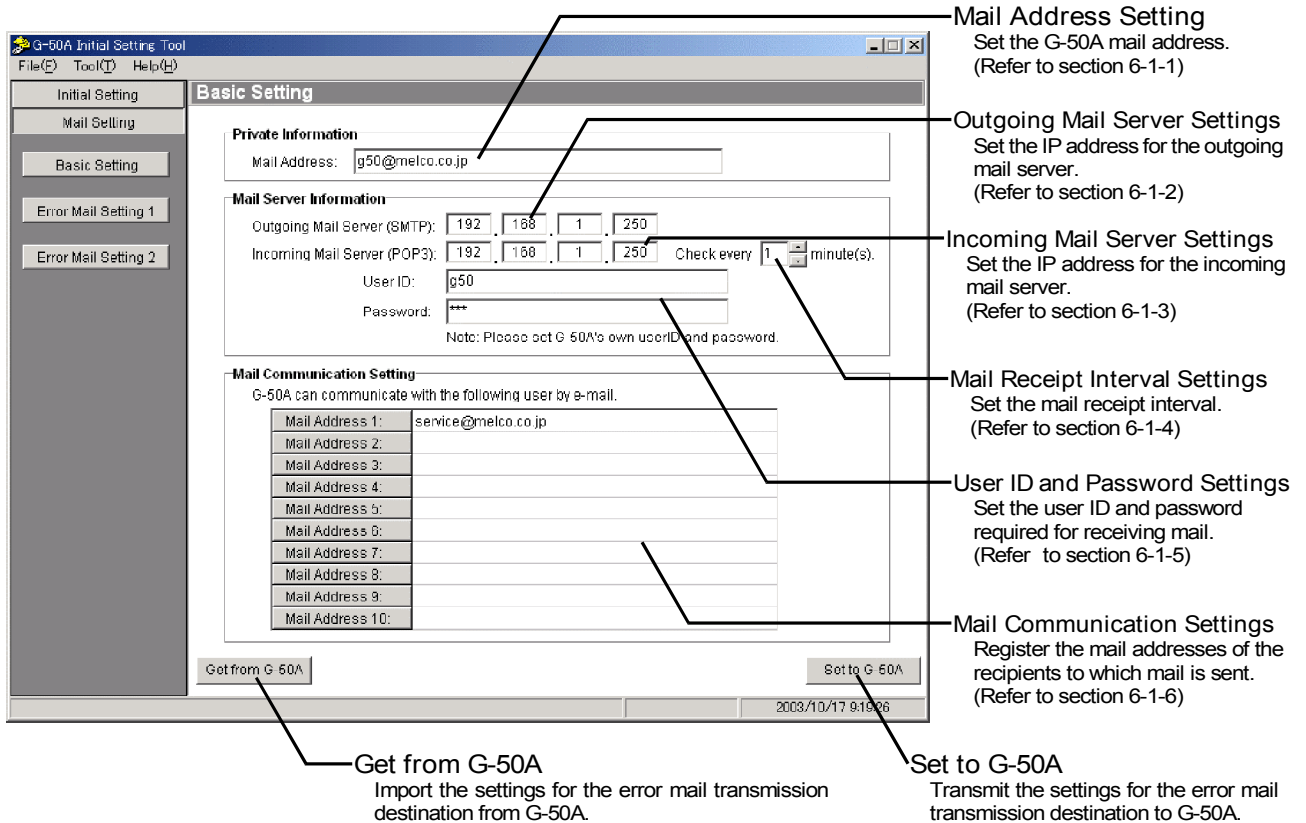
This section provides an explanation of the settings required for sending and receiving mail and also details of how to make settings for the recipient of error mail for errors occurring at the air conditioner.

When sending mail via an ISP, it is necessary to connect to the dial-up router on the G-50A LAN side and perform the ISP connection settings on the dial-up router.

6-1 Mail Basic Settings

Display the page needed to perform the mail basic setting by clicking [Mail Setting]-[Basic Setting] in the setting menu pane. Perform settings required for sending and receiving mail at this screen.

Click [Get from G-50A] to get data currently stored on the G-50A, or click [Set to G-50A] to send setting data to the G-50A.



6-1-1 Setting the G-50A mail address

Set the mail address of the G-50A in the [Mail Address] field. When sending mail via an ISP, set the mail address allocated by the ISP. When the mail server resides on the LAN, obtain the mail address from the LAN administrator.

Note: When sending mail via an ISP, a user contract with the ISP is required.

6-1-2 Setting the IP Address for the Outgoing Mail Server

Set the IP address for the outgoing mail server to connect to at the [Outgoing Mail Server (SMTP)] field. When sending mail via an ISP, set the ISP address of the ISP mail server. When the mail server resides on the LAN, obtain the IP address from the LAN administrator.

Note: If the only information available on the ISP mail server is a domain name, use a PC to connect to the Internet, open a DOS prompt and type ping domain name . Set the IP address that is displayed as the ping response.

6-1-3 Setting the IP Address for the Incoming Mail Server

Set the IP address for the incoming mail server to connect to at the [Incoming Mail Server (POP3)] field. These settings are only required when communicating by mail with dedicated software in a remote location. (These settings are not required when only transmitting error information by mail.)

Note: These settings are supported only for G-50A version 2.60 and above.

6-1-4 Setting the Mail Receipt Interval

Set the mail receipt interval from 1 to 60 minutes at the mail receipt interval settings field. Normally, 1 minute is set, however, a longer interval should be set if there are cases when the mail server becomes congested. These settings are only required when communicating by e-mail with dedicated software in a remote location. (These settings are not required when only transmitting error information by e-mail.)

Note 1: These settings are supported only for G-50A version 2.60 and above.

Note 2: In order to increase the mail communication speed, after receiving the latest mail, mail is checked at the mail server 6 times at 1/6th of the time interval specified at this item.

6-1-5 Setting the User ID and Password

Set the user ID and password used for receiving mail at the [User ID] and [Password] fields. Set in the account provided by the Internet Provider or the LAN administrator.

These settings are only required when communicating by e-mail with dedicated software in a remote location. (These settings are not required when only transmitting error information by e-mail.)

Note: These settings are supported only for G-50A version 2.60 and above.

6-1-6 Setting the Mail Addresses of Mail Recipients

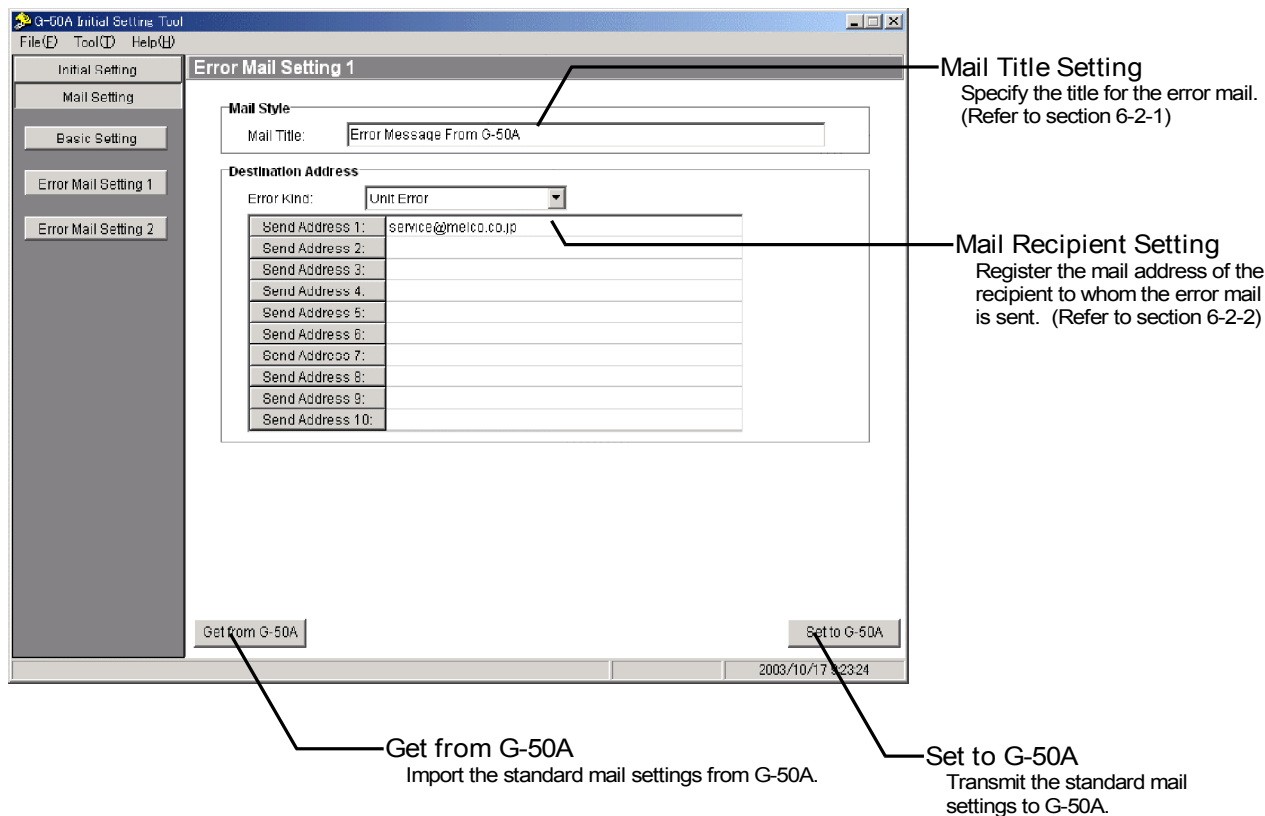
Set the mail addresses of mail recipients in the [Mail Communication Setting] field. These settings are only required when communicating by e-mail with dedicated software in a remote location. (These settings are not required when only transmitting error information by e-mail.)

Note 1: These settings are supported only for G-50A version 2.60 and above.

Note 2: Mail communication is only possible with the recipient specified here.

6-2 Setting the Error Mail Destinations

Click [Mail Setting]-[Error Mail Setting 1] in the setting menu pane to display the screen used to make error mail settings. At this screen, specify the title of the error mail to be transmitted and the mail recipient. Click [Get from G-50A] to acquire the data currently stored at the G-50A, or click [Set to G-50A] to transmit the settings data to G-50A.



6-2-1 Setting the Title of the Error Mail

Enter the title of the error mail that will be sent from G-50A in the [Mail Title] field. The title can be a maximum of 40 alphanumeric or symbol characters.

Note: The following characters cannot be used in the mail title: < > & " ' "

6-2-2 Setting the Recipient of the Error Mail

Up to 10 separate recipients can be set for each kind of error that occurs on an air conditioner. The error kinds are: [Unit Error], [Unit Error Delay], [Communication Error] and [User Setting 1]-[User Setting 6]. You can set mail to be sent only for times when the occurred error code has been set in the user setting.

The method of setting the mail recipients is given below.

- (1) From the [Error Kind] field of Destination Address, select the error kind for which you want mail to be sent.
- (2) Register one recipient mail address per row in [Send Address 1]-[Send Address 10].

6-3 Setting Error Codes

Display the page needed to perform the user settings for the error codes used when sending mail by clicking [Mail Setting]-[Error Mail Setting 2] in the setting menu pane. On this page, you can individually set which errors require mail to be sent.

Click [Get from G-50A] to get data currently stored on the G-50A, or click [Set to G-50A] to send setting data to the G-50A.

Error Code Setting
Set the error codes that require mail to be sent.

Get from G-50A
Read the error code setting from G-50A.

Set to G-50A
Send error code setting to G-50A.

6-3-1 Registering error codes in User Settings

For each User Setting, up to 20 error codes corresponding to errors occurring on air conditioners that require mail to be sent can be set in the [Error Code] field. You can set individual error codes such as [1302] and [6607], or you can make settings such as [10**] and [12**]. For example, if the setting [10**] is made, error mail will be sent every time an error with an error code of [1000] through [1099] occurs.

When using this page to set error codes ensure that the mail recipients registered for each user setting are also registered in the [Error Mail Setting 1] page.

