



## Mitsubishi Electric Building Air-conditioner Control System

# Central Controller

## G-50A/GB-50 *Web Browser Operation Manual (For Managers)*

### Contents

1 Introduction .....	1
1-1 Conventions Used in This Manual.....	1
1-2 Computer Requirements .....	1
1-3 Notes on using G-50A with the integrated centralized control software (TG-2000A).....	1
2 Setting the Operating Environment .....	2
2-1 Setting the PC IP Address.....	2
2-2 Setting the Web Browser.....	4
3 Performing Operations.....	6
3-1 Entering the User Name and the Password, and Connecting to the G-50A .....	6
3-2 Checking the Operation Condition of the Air Conditioner .....	7
3-3 Performing Air Conditioner Operations .....	9
3-4 Checking the List of Malfunctioning Units .....	11
3-5 Checking the List of Units with a Triggered Filter Sign .....	12
3-6 Setting Schedules.....	13
3-7 Checking the Malfunction Log .....	21
3-8 Setting the Current Date and Time.....	22
3-9 Registering Users .....	23
3-10 Checking the Send Mail Log .....	24
4 Registering a License for Optional Functions .....	25

**Before using the web browser to monitor and operate the G-50A controller, please read this operation manual carefully to ensure correct operation.  
Store this operation manual in a location that is easy to find.**

# 1 Introduction

A special feature of Mitsubishi Electric Corporation's "Central Controller G-50A" and "Central Controller GB-50A" are that a PC connected to a LAN can be used to monitor the operation condition of air conditioners and perform air conditioner operations.

In this manual, the procedures to monitor the status of and to operate the central controller G-50A and GB-50A on the Web browser are described.

Hereinafter, the central controller G-50A and GB-50A, unless otherwise specified, will be called "G-50A".

Note: License of "Web Monitor" or "GB-50A License Pack (available only in GB-50A)" is necessary to operate or monitor the air conditioners. Register the license on the registration screen.

## 1-1 Conventions Used in This Manual

- Unless otherwise specified, "Windows" refers to Windows® 98, Windows® Me, Windows® 2000 and Windows® XP.

Note: Windows is a registered trademark or trademark of Microsoft Corporation USA in the United States and other countries.

- "Click" refers to the action of positioning the mouse cursor on the object (such as button or folder) and pressing down and releasing the left mouse button once.
- Unless otherwise specified, the example screen images used in this manual are Windows XP and Internet Explorer 6.0 screen images.

## 1-2 Computer Requirements

In order to monitor and operate air conditioners by web browser, your computer must meet the following requirements.

Table 1-1 Computer Requirements

Item	Requirement
CPU	Pentium 133MHz or faster (300MHz or faster recommended)
Memory	64M Bytes or more (128M Bytes or more recommended)
Screen resolution	1024 x 768 or higher recommended
Compatible browser	Microsoft® Internet Explorer 5.0 or later Note: You must have a Java execution environment. (Microsoft VM Ver5.0 or later or Sun Microsystems Java Plug-in Ver.1.4.2 or later). Note: You can check the Microsoft VM version by entering "jview" in a command prompt. Note: You can check the Sun Microsystems Java Plug-in version in "Java Plug-in" in a control panel.
On-board LAN port or LAN card	One connector (10BASE-T)
Other	Pointing device such as a mouse

Note: Microsoft is a registered trademark or trademark of Microsoft Corporation USA in the United States and other countries.

## 1-3 Notes on using G-50A with the integrated centralized control software (TG-2000A)

If the system is connected to the integrated centralized control software (referred to as TG-2000A hereafter), make all settings and changes from the TG-2000A so that the data in TG-2000A and G-50A will match.

# 2 Setting the Operating Environment

Given below is an explanation of the PC settings and web browser settings that are required for using a web browser to monitor air conditioner units and perform operations.

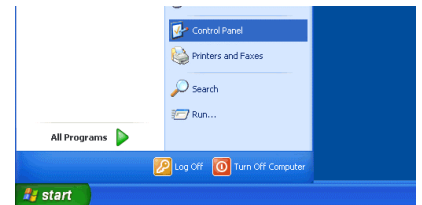
## 2-1 Setting the PC IP Address

You need to set an IP address on the PC that will enable you to connect to the G-50A using a web browser. For instance, if the G-50A IP address is [192.168.1.1], the PC IP address will need to belong to the same system (for example [192.168.1.101]).

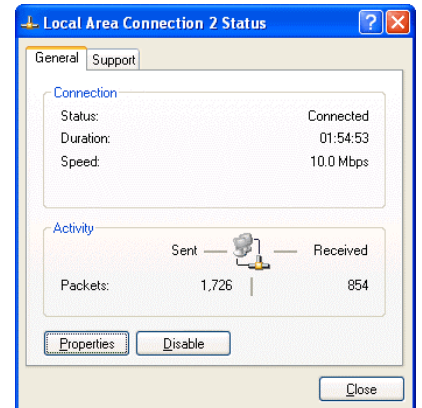
If the G-50A is connected to an existing LAN, ask the LAN administrator to decide what PC IP address to use.

Note: When using a G-50A dedicated LAN, we recommend the G-50A main unit be given an IP address within the range [192.168.1.1] — [192.168.1.40] and the PCs that will be connected to the G-50A be given an IP address within the range [192.168.1.101] — [192.168.1.150]

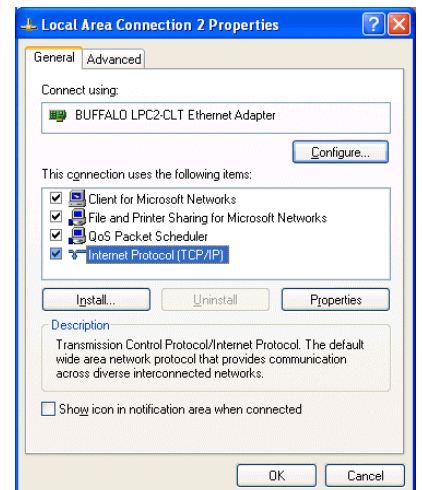
(1) Click on [Control Panel] under [Start] to open the Control Panel.



(2) In the Control Panel window, double click [Network and Dial-up Connections] and the Network and Dial-up Connections window will open. Double click on [Local Area Setting] and the [Local Area Connection Status] dialog will open. Click [Properties].



(3) In the [Local Area Connection Properties] dialog, click [Internet Protocol] to select it and click the [Properties] button.

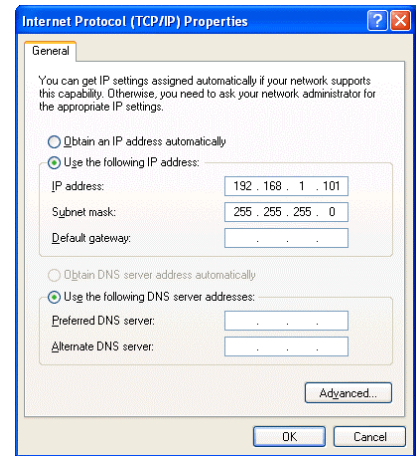


(4) In the [Internet Protocol (TCP/IP) Properties] dialog, click [Use the following IP address] and enter the IP address (for example, "192.168.1.101") that you want to set in the IP address field.

You normally set [255.255.255.0] as the subnet mask.

Note: Ask your LAN administrator to provide the IP addresses and subnet mask.

(5) Click the [OK] button to close this dialog, and then close the other open dialogs to complete the network setting.



## 2-2 Setting the Web Browser

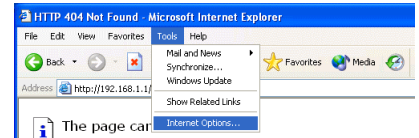
Perform the necessary web browser settings to enable the web browser to connect to the G-50A.

Note: The settings and screen images used as examples in this manual are based on Internet Explorer 6.0.

### 2-2-1 Not connecting to the Internet

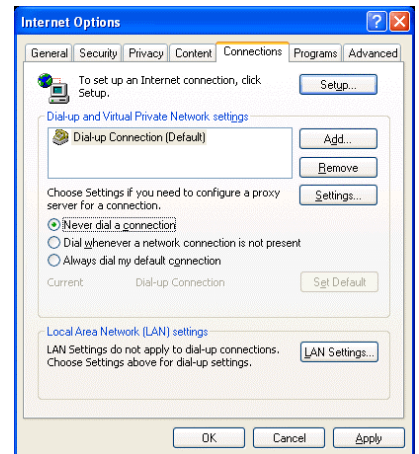
If the PC you use for monitoring air conditioners and performing operations is not going to be connected to the Internet, use the procedure given below to set the web browser environment settings.

- (1) Click the web browser menu item [Tools] and then click [Internet Options...]



- (2) In the [Internet Options] tabbed dialog, click the [Connections] tab to display that page.

- (3) Select [Never dial a connection] in the Dial-up settings section and click the [OK] button to close the dialog.

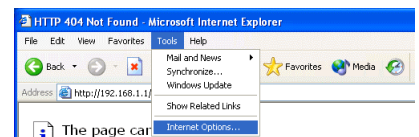


### 2-2-2 Connecting to the Internet using a dial-up connection

If the PC you use for monitoring air conditioners and performing operations is going to connect to the Internet via a dial-up connection, use the procedure given below to set the web browser environment settings.

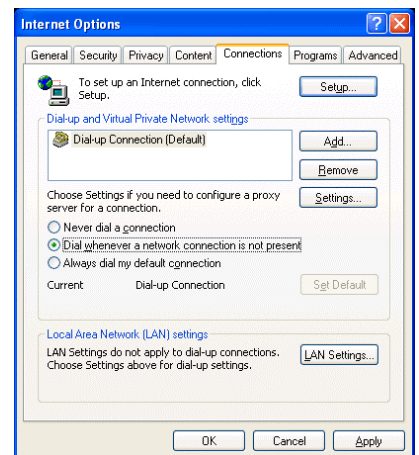
By performing these settings, a message will appear asking whether or not to use a dial-up connection when an Internet connection is necessary. In the case when you want to connect to the Internet, connect to the Internet by following the directions of this message.

- (1) Click the web browser menu item [Tools] and then click [Internet Options...]



- (2) In the [Internet Options] tabbed dialog, click the [Connections] tab to display that page.

- (3) Select [Dial whenever a network connection is not present] in the Dial-up settings section and click the [OK] button to close the dialog.

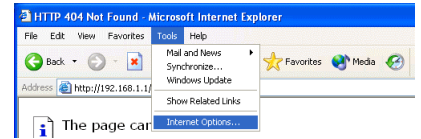


## 2-2-3 Connecting to the Internet using a proxy server (Using an existing LAN)

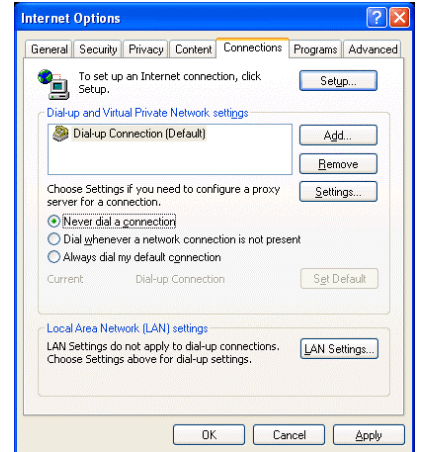
If the PC you use for monitoring air conditioners and performing operations is going to access the Internet via proxy server by connecting to an existing LAN such as a LAN within your company, use the procedure given below to set the web browser environment settings.

By performing these settings, your PC will connect to a proxy server only when connecting to the Internet.

- (1) Click the web browser menu item [Tools] and then click [Internet Options...]



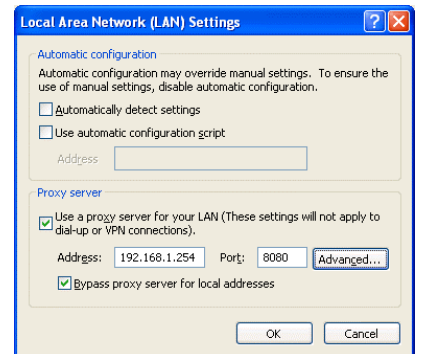
- (2) In the [Internet Options] tabbed dialog, click the [Connections] tab to display that page.



- (3) Select [Never dial a connection] in the Dial-up setting section.

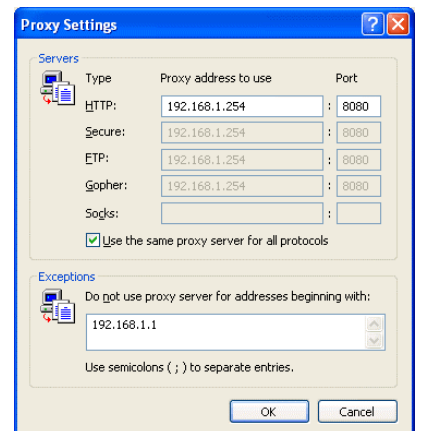
- (4) Click the [LAN Setting . . .] button in the Local Area Network (LAN) settings section to display the Local Area Network (LAN) Settings dialog.

- (5) In the Local Area Network (LAN) Settings dialog, check [Bypass proxy server for local addresses] and click the [Advanced...] button.



- (6) Enter the IP address for the G-50A (e.g. 192.168.1.1) in the Exceptions field of the Proxy Setting dialog and click the [OK] button to close the dialog and then close the other open dialogs to complete the setting.

Note: If connecting to more than one G-50A, you can specify multiple IP addresses like [192.168.1.1; 192.168.1.2], however, it is also possible to use the asterisk (\*) and specify [192.168.1\*].



# 3 Performing Operations

Given below is an explanation of how to connect to the G-50A and how to monitor and adjust the operation condition of air conditioners. Follow the directions given here when performing operations.

Note: If the G-50A is restarted due to circumstances like a power interruption, wait until the screen on the G-50A main unit displays the normal operation screen (it takes several minutes before the normal operation screen is displayed) before using a web browser to access the G-50A. If access is attempted while the G-50A is still starting up, the most recent data might not be displayed or communication errors could occur.

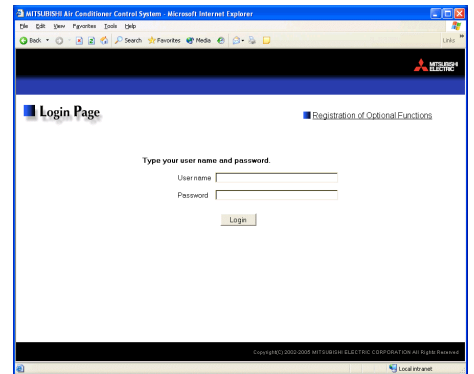
Note: Default IP address of G-50A (GB-50A) is "192.168.1.1". (Factory setting)

## 3-1 Entering the User Name and the Password, and Connecting to the G-50A

- (1) Enter the web page address in the address field of the web browser as follows and press the [Enter] key on the keyboard. A screen appears for login.

**http:// [IP address of the G-50A] / administrator.html**

Note: For example, type "http://192.168.1.1/administrator.html" if the G-50A IP address is [192.168.1.1].



- (2) To make it easier to connect the next time, click the web browser menu item [Favorites] and click [Add to Favorites] to select that option and add the address to your Favorites folder. Once this address is added to your Favorites folder, it is not necessary to input the address of (1). You can simply select it from your Favorites folder and the G-50A page will appear.



- (3) Enter the user name and the password in the login screen, and click the [Login] button. The screen for monitoring the operation condition will appear. An explanation on how to perform operations in the normal operation screen begins from the next page.

The table below shows the web page address for public users and managers, their respective default the user names and passwords, and accessible functions. If there are public users who will only operate the air conditioners, provide them with the appropriate web page address and password.

User	Web page address	Default user name	Default password	Accessible functions
Public users	http:// [IP address of G-50A] / index.html	guest	guest	Monitor / operation
Managers	http:// [IP address of G-50A] / administrator.html	administrator	admin	Monitor / operation Schedule settings (Optional function) Malfunction log monitor Date/time adjustment User registration Send mail log monitor Optional function registration

Note: You can register a maximum of 50 public users and it is possible to individually specify which air conditioners can be operated by each user. (The use of this function requires a license registration.)

Note: The Web page is displayed in the same language as the computer uses and it is also possible to display the Web page in other languages by entering the following Web page addresses.

- English : HTTP://[IP address of G-50]/en/administrator.html
- German : HTTP://[IP address of G-50]/de/administrator.html
- French : HTTP://[IP address of G-50]/fr/administrator.html
- Spanish : HTTP://[IP address of G-50]/es/administrator.html
- Italian : HTTP://[IP address of G-50]/it/administrator.html
- Russian : HTTP://[IP address of G-50]/ru/administrator.html
- Japanese : HTTP://[IP address of G-50]/ja/administrator.html

The above addresses are for administrators. For user's use, change [administrator.html] to [index.html].

## 3-2 Checking the Operation Condition of the Air Conditioner

“Given below is an explanation on how to monitor the operation condition of a list of all groups, or of groups in block units.” When a correct user name and password is entered on the password entry screen, the screen used to monitor the operation condition of air conditioners and perform air conditioner operations will appear.

### 3-2-1 Checking the operation condition of all groups

Click the menu item [Monitor/Operation], or click [Condition List] in the sub menu to display a list of the operation condition of all the air conditioner groups.

This screen allows the operator to view a list of all the groups to monitor for air conditioner malfunctions and prevent units being left on by mistake.

**Menu**

**Sub menu**

**Update to most recent condition**  
Click to update the screen so that the most recent operation condition is shown.

**Batch operation**  
Click when you want to perform an operation on all groups at once.

**Block display**  
Click to display the operation condition of groups in block

**Air conditioner icons**  
These icons are used to indicate the operation condition of an air conditioner group. The group name is displayed by pointing to the icon with the mouse cursor. Switch to the operation screen by clicking the icon.

Item	Description																								
Block display	Switches to the screen where you can check the operation condition according to block units.																								
Update to most recent condition	Click [Update] to ensure the displayed items reflect the most recent operation condition. When [Auto] is selected, information is updated automatically every minute to reflect the latest information.																								
Batch operation	Click [Batch Operation] when you want to perform an operation on all groups at once.																								
Air conditioner icon	<p>The operation condition is indicated by the icon that is displayed. When you point to an air conditioner icon with the mouse cursor, the group name is displayed. To switch to the operation screen, click on the icon. The icons used to indicate the operation condition are shown below.</p> <p>(1) Air conditioner group operation condition</p> <table border="1"> <thead> <tr> <th>ON</th> <th>OFF</th> <th>Error</th> <th>Filter sign</th> </tr> </thead> <tbody> <tr> <td></td> <td></td> <td></td> <td></td> </tr> <tr> <th>Interlocked ventilator ON</th> <th>Interlocked ventilator OFF</th> <th>Schedule set</th> <th>Energy saving</th> </tr> <tr> <td></td> <td></td> <td></td> <td></td> </tr> </tbody> </table> <p>Note: The energy saving icon is displayed while the indoor unit groups and the outdoor units that are in the same group are under energy-saving control. (In Ver.2.8 or later, the icon is displayed only when the indoor unit groups are under control.)</p> <p>(2) Ventilator (Lossnay) group operation condition</p> <table border="1"> <thead> <tr> <th>ON</th> <th>OFF</th> <th>Error</th> <th>Filter sign</th> </tr> </thead> <tbody> <tr> <td></td> <td></td> <td></td> <td></td> </tr> </tbody> </table>	ON	OFF	Error	Filter sign					Interlocked ventilator ON	Interlocked ventilator OFF	Schedule set	Energy saving					ON	OFF	Error	Filter sign				
ON	OFF	Error	Filter sign																						
Interlocked ventilator ON	Interlocked ventilator OFF	Schedule set	Energy saving																						
ON	OFF	Error	Filter sign																						



### 3-2-2 Checking the operation condition of groups in different blocks

Click [Block] in the screen showing the list of all groups to display the operation condition of air conditioner groups for each block.

Use this screen if you want to check data not included in the List screen such as operation mode and set temperature or if you want to check operation condition for each block.

**Batch operation**  
Click when you want to perform an operation on all groups at once.

**Update to most recent condition**  
Click to update the screen so that the most recent operation condition is shown.

**Select block**  
Use this to select which block to display.

**Air conditioner icons**  
These icons are used to indicate the operation condition of an air conditioner group. Switch to the operation screen by clicking the icon.

**Overview display**  
Click to display the operation condition of groups in a list of all groups.

**Set temperature display**  
The set temperature is displayed here.

**Room temperature display**  
The temperature of the indoor unit's intake is displayed here.

**Operation mode display**  
The operation mode is displayed here.

Item	Description
Overview display	Switches to the screen where you can check the operation condition of all the groups, which are displayed in a list.
Update to most recent condition	Click [Update] to ensure the displayed items reflect the most recent operation condition. When [Auto] is selected, information is updated automatically every minute to reflect the latest information.
Batch operation	Click [Batch Operation] when you want to perform an operation on all groups in the block at once.
Select block	Use this to select which block to display and perform operations on.
Air conditioner icons	The operation condition is indicated by the icon that is displayed. To switch to the operation screen, click on the icon.
Operation mode display	The operation mode is displayed.
Set temperature display	The set temperature is displayed.
Room temperature display	The temperature of the indoor unit's intake is displayed. Note: Because the temperature displayed here is of the indoor unit's intake, it could be different from the actual room temperature. Note: The temperature display can be set to display in either Celsius (°C) or Fahrenheit (°F).

## 3-3 Performing Air Conditioner Operations

Given below is an explanation of how to perform air conditioner operations that target one group, one block, or all groups.

### 3-3-1 Performing air conditioner operations that target one group

When you click on an air conditioner icon or ventilator (Lossnay) icon in the operation condition monitoring screen that shows the list of all groups or the list of groups in the selected block, the operation screen for that group will appear. The items shown in this screen are the current operation conditions. Modify the items you want to change and click [OK] to confirm the operation details. Click [Cancel] to return to the previous screen without making any changes.

The screenshot shows the 'Monitor/Operation' screen for a Mitsubishi Air Conditioner Control System. The interface includes a navigation menu at the top with options like 'Condition List', 'Malfunction List', and 'Filter Sign List'. The main area displays various controls: 'ON/OFF' buttons, 'Mode' selection (Cool, Dry, Fan, Heat, Auto), 'Set Temp.' (19°C), 'Air Direction' (swing icon), 'Fan Speed' (slider), 'Prohibit Remote Controller Operation' (ON/OFF), and 'Filter Sign' (Reset). A 'Ventilation' section has its own 'ON/OFF' buttons. At the bottom are 'Cancel' and 'OK' buttons. The browser title bar reads 'MITSUBISHI Air Conditioner Control System - Microsoft Internet Explorer'.

**Block name**  
The name of the block is displayed here.

**ON/OFF**  
Click to switch to ON or OFF.

**Operation mode**  
Click to switch the operation mode.

**Set temperature**  
Click to adjust the set temperature.

**Air direction**  
Click to adjust the air direction.

**Filter sign**  
Click to reset the filter sign.

**Cancel button**  
Click to cancel all operations.

**Group name**  
The name of the group is displayed here.

**Interlocked ventilator ON/OFF**  
Click to switch interlocked ventilator ON or OFF.

**Fan speed of interlocked ventilator**  
Click to adjust the fan speed of the interlocked ventilator.

**Prohibit remote controller operation**  
Click to select the items you do not want the remote controller to control.

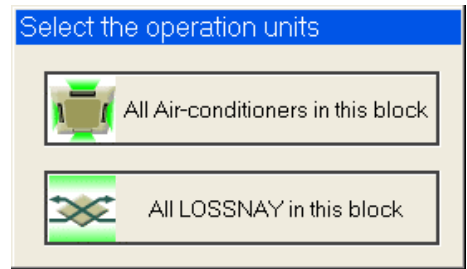
**Fan speed**  
Click to adjust the fan speed.

**OK button**  
Click to confirm the operation details. You must press the OK button for the operation to take effect.

Item	Description
ON/OFF	Click [ON] or [OFF] to switch to ON or OFF.
Operation mode	Click [Cool], [Dry], [Fan], [Heat] or [Auto] to switch the operation mode. If it is a ventilator group, select [Bypass], [Heat Recovery] or [Auto]. Note: Some unit models do not support certain operation modes. Unsupported operation modes are not displayed. Note: For K control models, all modes are displayed, however, choose only the modes that can be operated.
Set temperature	Click   to adjust the set temperature. For [Cool] and [Dry], the setting range is 19 ~ 30°C/67 ~ 87°F, for [Heat] it is 17 ~ 28°C/63 ~ 83°F, and for [Auto] it is 19 ~ 28°C/67 ~ 83°F. Note: The temperature setting range varies depending on the unit model. Note: If it is a ventilator model, this item is not displayed. Note: The temperature display can be set to display in either Celsius (°C) or Fahrenheit (°F). Note: When displayed in Fahrenheit, the temperature is displayed in 2°F steps.
Air direction	Click  to adjust the air direction. Note: If it is a model that does not support air direction adjustment, this item is not displayed. Note: If it is a model that does not support the swing feature, the swing option is not displayed.
Fan speed	Click   to adjust the fan speed. Note: If it is a model that does not support fan speed adjustment, this item is not displayed. Note: The number of available fan speeds will be 2 settings, 3 settings or 4 settings, depending on the number of fan speeds supported by the model.
Prohibit remote controller operation	Select the items you do not want the remote controller to control. Click the word part of [ON/OFF], [Mode], [Set Temp] or [Filter Sign] and switch to prohibit  or enable . Note: For K control models, it is only possible to prohibit all items or enable all items. Note: For K control models, there is no [Filter Sign] item. Note: For ventilator models, there are no [Mode] item or [Set Temp] item.
Filter sign	Click [Reset] to specify whether to reset the filter sign. It is set to reset when a green indicator is displayed on the left of Reset (). Note: If filter signs are not triggered in the group, then this item is not displayed.
Interlocked ventilator ON/OFF	Click [ON] or [OFF] to switch interlocked ventilator ON or OFF. Note: For groups that are not connected to an interlocked ventilator, the items related to interlocked ventilators are not displayed.
Fan speed of interlocked ventilator	Click   to adjust the fan speed of the interlocked ventilator. Note: For groups that are not connected to an interlocked ventilator, the items related to interlocked ventilators are not displayed.

### 3-3-2 Performing air conditioner operations that target one block

- (1) Select the block you want to operate as an entire block from the operation condition monitoring screen for block lists and click [Batch Operation]. If the block that was selected contains both air conditioner groups and LOSSNAY groups, a selection screen appears asking you to select whether to set air conditioners or LOSSNAY. Click either “All air-conditioners in this block” or “All LOSSNAY in this block” and the screen to set the batch operation will appear.

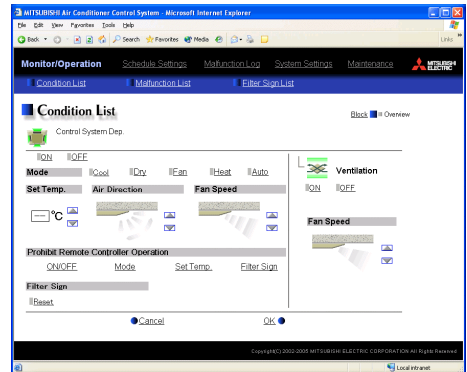


If the block that was selected has only air conditioner groups or only LOSSNAY groups, this selection screen will not appear.

- (2) After you have made the settings on the screen for batch operation, click [OK] and the operation settings for only the adjusted items will be sent to all the air conditioner units contained in the selected block. To return to the previous screen without performing any operations, click [Cancel].

Note: When resetting the filter sign as part of a one-block batch operation, the accumulated ON time used to trigger the filter sign will be reset in all units belonging to the selected block, irrespective of whether or not the filter sign was triggered. Use the reset filter sign operation in a batch operation in a case such as when all the unit filters in the same batch are cleaned at once.

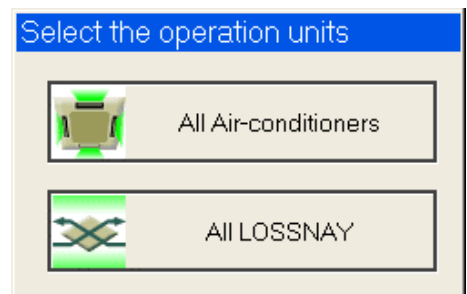
Note: When allowing remote controller operation under K control, all prohibit remote controller operation items must be set enable.



### 3-3-3 Performing air conditioner operations that target all groups

- (1) Click [Batch Operation] from the operation condition monitoring screen that displays all groups in a list. If the system contains both air conditioner groups and LOSSNAY groups, a selection screen appears asking you to select whether to set air conditioners or LOSSNAY. Click either “All air-conditioners” or “All LOSSNAY” and the screen to set the batch operation will appear.

If the system has only air conditioner groups or only LOSSNAY groups, this selection screen will not appear.

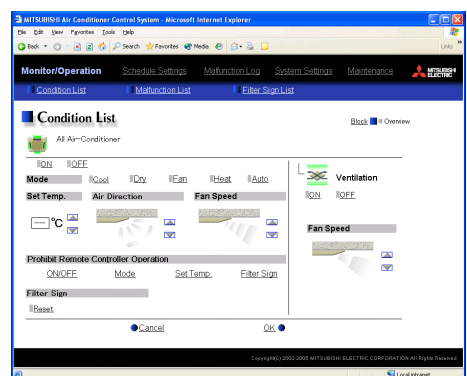


- (2) After you have made the settings on the screen for batch operation, click [OK] and the operation settings for only the adjusted items will be sent to all the air conditioner units.

To return to the previous screen without performing any operations, click [Cancel].

Note: When resetting the filter sign as part of an all-groups batch operation, the accumulated ON time used to trigger the filter sign will be reset in all units, irrespective of whether or not the filter sign was triggered. Use the reset filter sign operation in a batch operation in a case such as when all the unit filters are cleaned at once.

Note: When allowing remote controller operation under K control, all prohibit remote controller operation items must be set enable.



### 3-4 Checking the List of Malfunctioning Units

Click the menu item [Monitor/Operation] and then click the sub menu [Malfunction List]. A list of units that are currently malfunctioning appears.

**All reset**  
Click to reset errors on all units as one batch operation.

**Update to most recent condition**  
Click to update the screen so that the most recent operation condition is shown.

**Group name**  
The name of the group is displayed here.

**Unit address**  
The unit address is displayed here.

**Number of malfunctioning units**  
The number of malfunctioning units is displayed here.

**Error code**  
The error code is displayed here.

Item	Description
Update to most recent condition	Click [Update] to ensure the displayed items reflect the most recent operation condition. When [Auto] is selected, information is updated automatically every minute to reflect the latest information.
All reset	Click [All Reset] when you want to reset the errors on all the malfunctioning units at once.
Number of malfunctioning units	The number of malfunctioning units is displayed.
Group Name	The name of the group is displayed. Note: If a unit, such as an outdoor unit or system controller, has not been registered in a group that is the object of the operation, this area will be blank.
Unit address	The unit address is display
Error code	The error code of the error that is causing the malfunction is displayed.

Item	Description
Update to most recent condition	Click [Update] to ensure the displayed items reflect the most recent operation condition. When [Auto] is selected, information is updated automatically every minute to reflect the latest information.
All reset	Click [All Reset] when you want to reset the errors on all the malfunctioning units at once.
Number of malfunctioning units	The number of malfunctioning units is displayed.
Group Name	The name of the group is displayed. Note: If a unit, such as an outdoor unit or system controller, has not been registered in a group that is the object of the operation, this area will be blank.
Unit address	The unit address is display
Error code	The error code of the error that is causing the malfunction is displayed.

### 3-5 Checking the List of Units with a Triggered Filter Sign

Click the menu item [Monitor/Operation] and click the sub menu [Filter Sign List]. A list of the units with a triggered filter sign appears.

**Update to most recent condition**  
Click to update the screen so that the most recent operation condition is shown.

**Group name**  
The name of the group is displayed here.

**Unit address**  
The unit address is displayed here.

**All reset**  
Click to reset the filter sign on all units with triggered filter signs.

**Number of units with triggered filter signs**  
The number of units with currently triggered filter signs is displayed here.

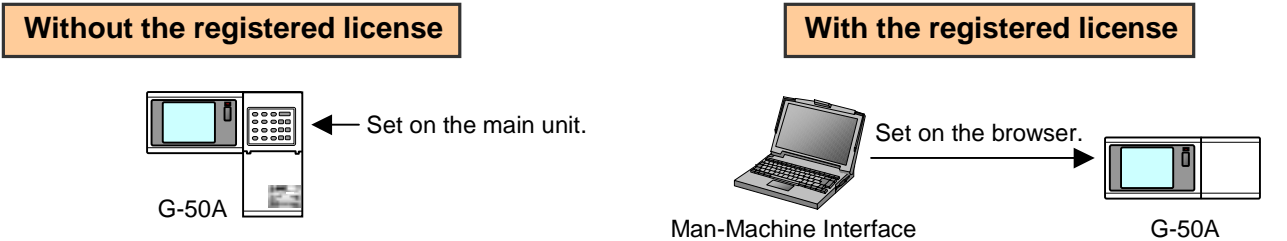
**Reset units individually**  
Click to reset the filter sign for the group the units belong to.

Item	Description
Update to most recent condition	Click [Update] to ensure the displayed items reflect the most recent operation condition. When [Auto] is selected, information is updated automatically every minute to reflect the latest information.
All reset	Click [All Reset] when you want to reset the filter sign on all units with a triggered filter sign at once.
Number of units with triggered filter signs	The number of units with currently triggered filter signs is displayed.
Group name	The group name is displayed.
Unit address	The unit address is displayed.
Reset units individually	Click [Reset] when you want to reset the filter sign for the group the units belong to.

### 3-6 Setting Schedules

When a license is registered for [Annual schedule/Weekly schedule], it is possible to use the annual schedule and today's schedule as well as additional functions for the weekly schedule. If a license has not been acquired, only the weekly schedule functions available on the G-50 unit can be used (if a license has not been acquired, refer to the operation manual for the G-50 unit for details on using its weekly schedule functions).

Note: As the central controller GB-50A main body is not equipped with a LCD for settings, the weekly schedule functions of the main body are not available.



**Weekly schedule** *Up to 3 ON settings per day*

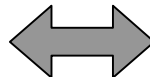
(1) Frequency of operations per day  
12 operations  
(ON/OFF: 3 each, Prohibit/Enable: 3 each)

(2) Operation items *The temperature setting must be set together with [On]*

[1] ON/OFF  
[2] Temperature setting (19-28°C/67 ~ 83°F)  
[3] Prohibit/enable remote controller operation

(3) Time setting unit *The minimum setting unit is 10 minutes*  
10 minutes

Note: It is not possible to use the browser to check the settings or details of the main unit's weekly schedule functions.



**Weekly schedule** *Up to 3 ON settings per day*

(1) Frequency of operations per day  
12 operations *The temperature setting must be set together with [On]*

(2) Operation items

[1] ON/OFF  
[2] Operation mode  
[3] Temperature setting (17-30°C/63 ~ 87°F)  
*Note: Settable temperature range varies according to model.*  
*Note: The CITY MULTI model supports a temperature setting range of 12-28°C / 53-83°F when in Heat mode.*  
[4] Prohibit/enable remote controller operation

(3) Time setting unit *The minimum setting unit is 10 minutes*  
1 min

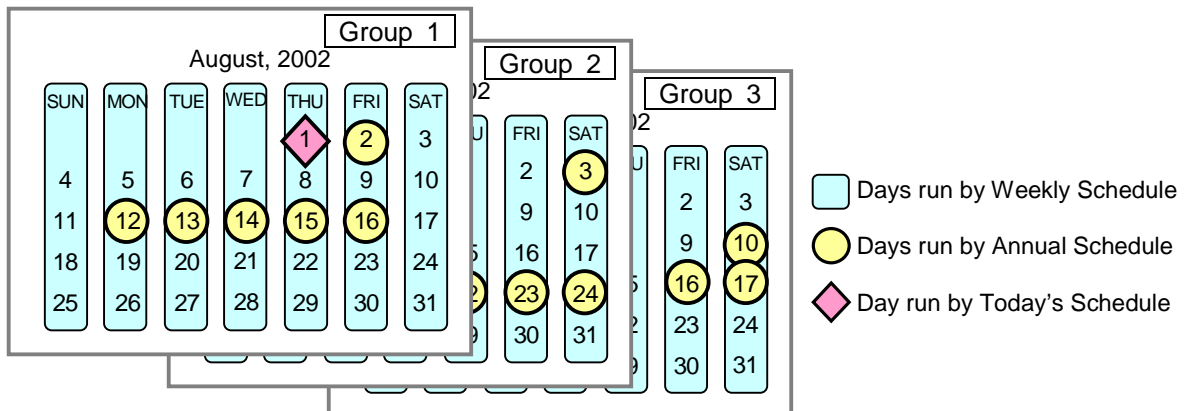
**Annual schedule** *Can set for public holidays*

Up to 50 days per year, such as public holidays and summer vacation can be scheduled as days that do not comply with the weekly schedule.

**Today's schedule** *The current day's schedule can be modified*

A schedule for that day can be modified without modifying the weekly schedule or annual schedule.

When a license is registered, it is possible to set different weekly/annual/today's schedules for each air conditioner group. Moreover, for any weekly/annual/today's schedule run for a particular day, the priority in which it is run will be from the highest and the order will be [Today's], [Annual], [Weekly].



### 3-6-1 Setting the Weekly Schedule

Click the menu item [Schedule Settings] and click [Weekly Schedule] in the sub menu to display the Weekly Schedule setting screen. To set a weekly schedule, you first must select what will be the target of this schedule and then set the schedule details from Sunday right through to Saturday.

Note: When the contents of an operation are executed as part of a schedule these contents will continue to be in effect until they are changed by a schedule or browser etc. Therefore, if you are setting a schedule that is only for a particular day, be sure to set your schedule in a way that will not impact on the next day's operation. For example, if you wish to prohibit operations being performed from the remote controller after 17:00, set a Prohibit operation for 17:00 and set an Enable operation for 23:59.

**Setting Range**  
Select the range that scheduling will be set for.

**Block Name**  
Select the block to be set.

**Group Name**  
Select the group to be set.

**Group Number**  
Select the group to be set.

**Copy (Group) / Paste**  
Click to copy or paste a schedule between groups.

**Undo button**  
Click to undo the changed

**Select a day of the week**  
Select which day to set the schedule for.

**Copy (Day of the week) / Paste**  
Click to copy or paste a schedule between each day of the week.

**Contents of Schedule**  
Operations set for the schedule are displayed here.

**Edit button**  
Click to set a schedule operation.

**Delete button**  
Click to delete a schedule operation.

**Save Settings button**  
Click to save the contents of the schedule setting. The schedule settings will not be saved unless this button is pressed.

#### (1) Select the target for the schedule being set

##### (1-1) Select a particular group

If you wish to set a schedule for a particular group, select [Group] from the Setting Range box.

Select the name of the block that the group belongs to, and then select the group name in the Setting Object box.

Alternatively it is possible to just select the group name and the group number. Once the group is selected, the contents of the schedule saved for that group will be displayed in the Contents of Schedule box.

**Setting Range**

Group  Block  All Groups

**Setting Object**

Block Name  
System Control Dept. ▼

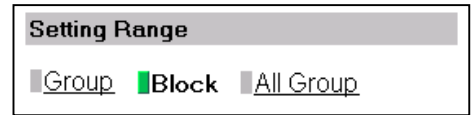
Group Name  
Technical Section ▼

Group Number

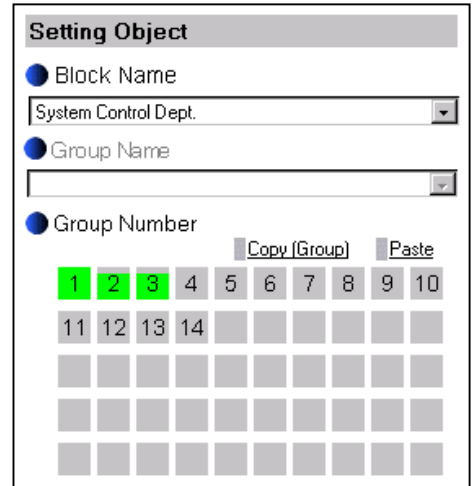
1	2	3	4	5	6	7	8	9	10
11	12	13	14						

**(1-2) Select all groups in a block**

If you want to set a schedule to be used by all groups in a block, select [Block] from the Setting Range box.

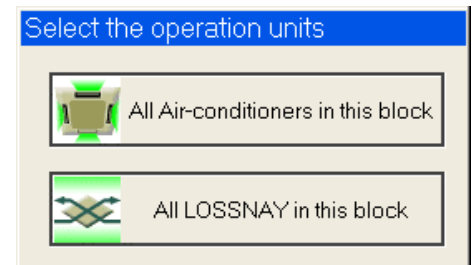


Select the name of the block that the groups belong to from the Setting Object box. Alternatively, if you click on a group number, the block that the group belongs to gets selected (groups cannot be selected unless they belong to a block).



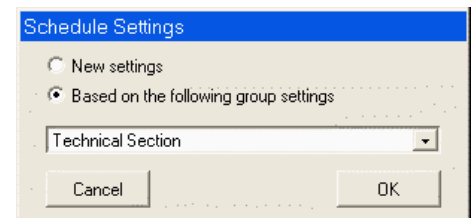
If you select a block for the Object of Setting and the selected block contains both air conditioner groups and LOSSNAY groups, a selection screen will appear asking whether to set air conditioners or LOSSNAY. Select [All air-conditioners in this block] or [All LOSSNAY in this block].

If either air conditioner groups or LOSSNAY groups are not present in the selected block, then this selection screen will not appear.



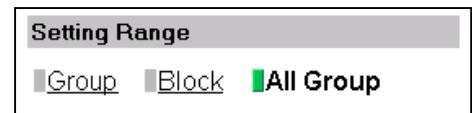
Next a screen to select the schedule setup method will appear. Select either [New settings] or [Based on the following group settings]. If you plan to add to an existing setting, and then choose to base it on an existing setting and select the name of the group you want to base the setting on and click the [OK] button.

If you chose to make a new setting, the Contents of Schedule box will appear completely blank. If you chose to base your setting on an existing group, the contents of the schedule set for that group will appear in the Contents of Schedule box.

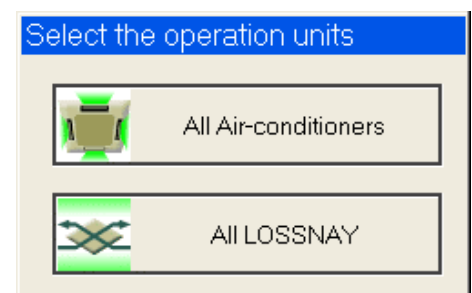


**(1-3) Select all groups**

When you want to set a schedule that will apply to all groups, select [All Group] in the Setting Range box.

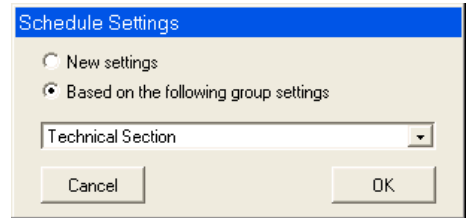


If you select all groups and the system contains both air conditioner groups and LOSSNAY groups, a selection screen will appear asking whether to set air conditioner groups or LOSSNAY groups. Select [All air conditioners] or [All LOSSNAY]. If either air conditioner groups or LOSSNAY groups are not present in the system, this screen will not appear.





Next a screen to select the schedule setup method will appear. Select either [New settings] or [Based on the following group settings]. If you plan to add to an existing setting, and then choose to base it on an existing setting and select the name of the group you want to base the setting on and click the [OK] button.



If you chose to make a new setting, the Contents of Schedule box will appear completely blank. If you chose to base your setting on an existing group, the contents of the schedule set for that group will appear in the Contents of Schedule box.

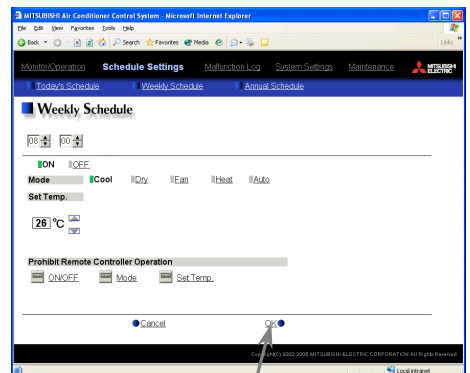
**(2) Select the day of the week**

Click the day of the week listed in the Contents of Weekly Schedule box you want to set the schedule for. You can select from Sunday through to Saturday.



**(3) Set the contents of the schedule**

When one of the [Edit] buttons in the Contents of Schedule box is clicked, a screen to set a schedule operation will appear. Use this screen to set when to run an operation and set the type of schedule operation (ON/OFF, operation mode, temperature setting, prohibit remote controller operation) and then press the [OK] button.



It is also possible to set a schedule operation that is only an operation mode or temperature setting modification. To do this, simply limit your setting to the particular details you want to change.

Note: The CITY MULTI model supports a temperature setting range of 12-28°C / 53-83°F when in Heat mode.

Note: When setting a schedule for all groups or for a block, it is possible to set all operation modes such as Auto mode etc, but if some targeted air conditioner units do not have such a function, then those units will not run in the specified mode. When setting the schedule, consider what functions are supported by the air conditioner units.

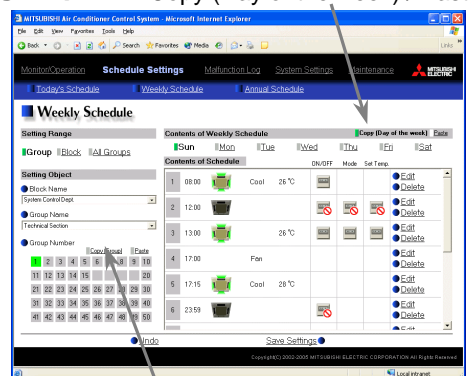
Note: When setting a schedule for all groups or for a block, it is possible to set prohibit remote controller items individually. When allowing remote controller operation under K control, however, all items must be set enable.

Note: When setting a schedule for ventilator units, the temperature setting is not displayed. Moreover, the prohibit remote controller operation is simply [ON/OFF].

OK button

**(4) Copy a schedule to another day of the week or to another group**

When copying a schedule between each day of the week, click "Copy (Day of the week)" button. The color of the button turns to green (which means the button is selected). Select the desired day, and click "Paste" button.



When copying the entire week's schedule between groups, click "Copy (Group)" button. Select the desired group, and click "Paste" button.

Note: The schedule of the air conditioner cannot be copied to the ventilation equipment (LOSSNAY), and the schedule of the ventilation equipment cannot be copied to the air conditioner.

Note: The operation mode that can be pasted and the temperature setting range vary depending on the unit type.

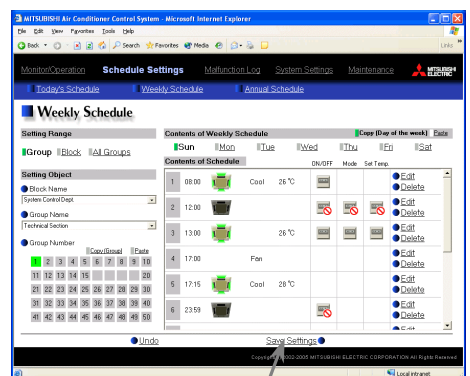
Copy (Day of the week) / Paste

Copy (Group) / Paste

**(5) Save the contents of schedule**

After you have finished setting the contents of the schedule, save the schedule setting by clicking the [Save Settings] button.

If the contents of the schedule setting have changed since the previous save, you can click the [Undo] button to restore the setting contents back to the saved settings.



Save Settings button

Note: When saving a schedule setting for all groups or for a block containing multiple groups, it can take several minutes until the setting is complete due to the large number of units being set.

### 3-6-2 Setting an Annual Schedule

Click the menu item [Schedule Settings] and click [Annual Schedule] in the sub menu to display the Annual Schedule setting screen. You can use the annual schedule to set schedules for days such as public holidays and summer vacation that need to be scheduled differently to the weekly schedule. For each air conditioner group, it is possible to set 50 day-long settings up to 24 months into the future (including the current month). Settings for days that have passed will be deleted automatically.

To set an annual schedule, first select the range and object of the schedule setting and then set the contents of the schedule for each schedule pattern. After setting the contents of the schedule pattern (Pattern 1 – 5), allocate the schedule pattern you wish to use for the days such as public holidays or summer vacation you are setting the annual schedule for.

Note: When the contents of an operation are executed as part of a schedule these contents will continue to be in effect until they are changed by a schedule or browser etc. Therefore, if you are setting a schedule that is only for a particular day, be sure to set your schedule in a way that will not impact on the next day's operation.  
For example, if you wish to prohibit operations being performed from the remote controller after 17:00, set a Prohibit operation for 17:00 and set an Enable operation for 23:59.

**Setting Range**  
Select the range that scheduling will be set for.

**Block Name**  
Select the block to be set.

**Group Name**  
Select the group to be set.

**Group Number**  
Select the group to be set.

**Copy (Group) / Paste**  
Click to copy or paste a schedule between groups.

**Undo button**  
Click to undo the changed

**Select the schedule pattern**  
Select which pattern you wish to set the schedule for.

**Contents of Schedule**  
Operations set for the schedule are displayed here.

**Copy (Pattern) / Paste**  
Click to copy or paste a schedule between each pattern.

**Edit button**  
Click to set a schedule operation.

**Delete button**  
Click to delete a schedule operation.

**Calendar**  
Use the calendar to specify the days that the selected schedule pattern will be allocated for.

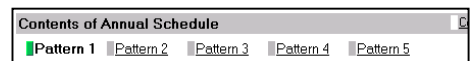
**Save Settings button**  
Click to save the contents of the schedule setting. The schedule settings will not be saved unless this button is pressed.

#### (1) Select the target for the schedule being set

Follow the procedure outlined for the weekly schedule (see 3-6-1) to select the range and object of the schedule setting.

#### (2) Select the schedule pattern you want to set

In the Contents of Annual Schedule box situated at the upper right part of the screen, choose the pattern you wish to set from Pattern 1 - 5. (If you do not need to modify any of the existing schedule pattern settings, then skip steps (2) and (3).)



### (3) Set the contents of the schedule setting

When one of the [Edit] buttons in the Contents of Schedule box is clicked, a screen to set a schedule operation will appear. Use this screen to set when to run an operation and set the type of schedule operation (ON/OFF, operation mode, temperature setting, prohibit remote controller operation) and then press the [OK] button.

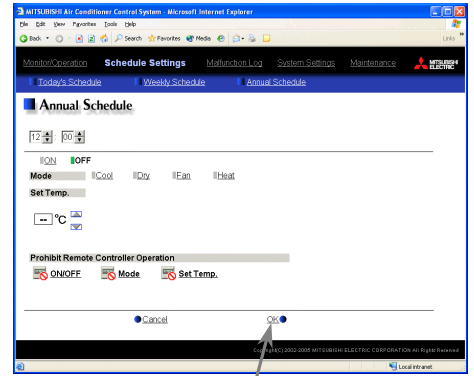
It is also possible to set a schedule operation that is only an operation mode or temperature setting modification. To do this, simply limit your setting to the particular details you want to change.

Note: The CITY MULTI model supports a temperature setting range of 12-28°C / 53-83°F when in Heat mode.

Note: When setting a schedule for all groups or for a block, it is possible to set all operation modes such as Auto mode etc, but if some targeted air conditioner units do not have such a function, then those units will not run in the specified mode. When setting the schedule, consider what functions are supported by the air conditioner units.

Note: When setting a schedule for all groups or for a block, it is possible to set prohibit remote controller items individually. When allowing remote controller operation under K control, however, all items must be set enable.

Note: When setting a schedule for ventilator units, the temperature setting is not displayed. Moreover, the prohibit remote controller operation is simply [ON/OFF].



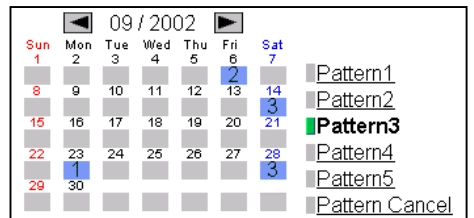
OK button

### (4) Specify the day(s) for pattern allocation

Allocate the set schedule pattern for days such as public holidays or summer vacation that has scheduling requirements different to the weekly schedule.

To allocate a schedule pattern to a day, first click the pattern you wish to allocate to select it and then select the day in the calendar by clicking on the rectangle corresponding to the day. When selected, the day will display the number of the pattern that has been allocated.

If you wish to remove a pattern allocation from a day, select [Pattern Cancel] and then click on that day's rectangle.



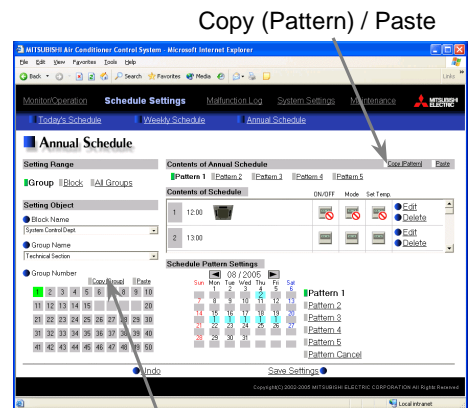
### (5) Copy a schedule to another pattern or to another group

When copying a schedule between each pattern, click "Copy (Pattern)" button. The color of the button turns to green (which means the button is selected). Select the desired pattern, and click "Paste" button.

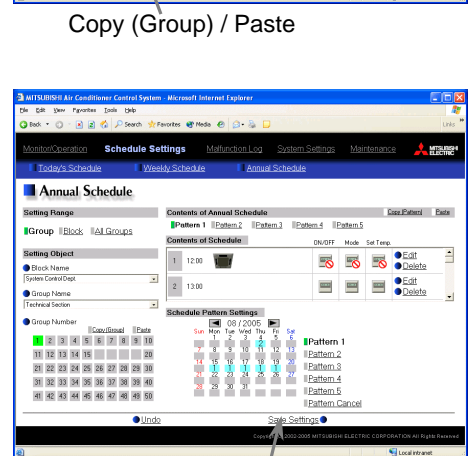
When copying all patterns of schedules or an allocated day of the pattern between each group, click "Copy (Group)" button. Select the desired group, and click "Paste" button.

Note: The schedule of the air conditioner cannot be copied to the ventilation equipment (LOSSNAY), and the schedule of the ventilation equipment cannot be copied to the air conditioner.

Note: The operation mode that can be pasted and the temperature setting range vary depending on the unit type.



Copy (Pattern) / Paste



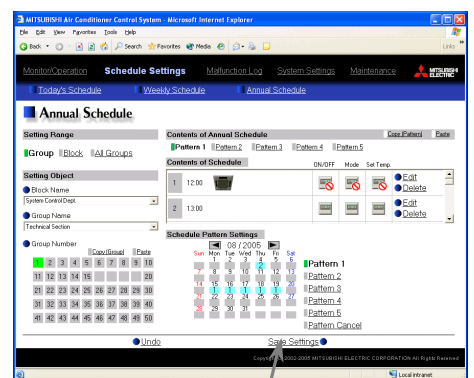
Copy (Group) / Paste

### (6) Save the contents of schedule

After you finished setting the contents of the schedule, save the schedule setting by clicking the [Save Settings] button.

If the contents of the schedule setting have changed since the previous save, you can click the [Undo] button to restore the setting contents back to the saved settings.

Note: When saving a schedule setting for all groups or for a block containing multiple groups, it can take several minutes until the setting is complete due to the large number of units being set.



Save Settings button

### 3-6-3 Modifying Today's Schedule

Click the menu item [Schedule Settings], or click [Today's Schedule] in the sub menu to display the Today's Schedule setting screen. Today's Schedule can be used to set a valid schedule for just the current day without modifying the weekly or annual schedule.

To set Today's Schedule, first select the range and object of the setting and then set the contents of the schedule.

Note: When the contents of an operation are executed as part of a schedule these contents will continue to be in effect until they are changed by a schedule or browser etc. Therefore, if you are setting a schedule that is only for a particular day, be sure to set your schedule in a way that will not impact on the next day's operation.

For example, if you wish to prohibit operations being performed from the remote controller after 17:00, set a Prohibit operation for 17:00 and set an Enable operation for 23:59.

**Setting Range**  
Select the range that scheduling will be set for.

**Block Name**  
Select the block to be set.

**Group Name**  
Select the group to be set.

**Group Number**  
Select the group to be set.

**Copy (Group) / Paste**  
Click to copy or paste a schedule between groups.

**Undo button**  
Click to undo the changed

**Contents of Schedule**  
Operations set for the schedule are displayed here.

**Edit button**  
Click to set a schedule operation.

**Delete button**  
Click to delete a schedule operation.

**Save Settings button**  
Click to save the contents of the schedule setting. The schedule settings will not be saved unless this button is pressed.

#### (1) Select the target for the schedule being set

Follow the procedure outlined for the weekly schedule (see 3-6-1) to select the range and object of the schedule setting.

#### (2) Set the contents of the schedule setting

When one of the [Edit] buttons in the Contents of Schedule box is clicked, a screen to set a schedule operation will appear. Use this screen to set when to run an operation and set the type of schedule operation (ON/OFF, operation mode, temperature setting, prohibit remote controller operation) and then press the [OK] button.

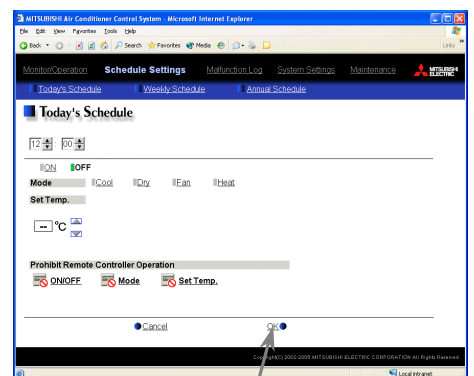
It is also possible to set a schedule operation that is only an operation mode or temperature setting modification. To do this, simply limit your setting to the particular details you want to change.

Note: The CITY MULTI model supports a temperature setting range of 12-28°C / 53-83°F when in Heat mode.

Note: When setting a schedule for all groups or for a block, it is possible to set all operation modes such as Auto mode etc, but if some targeted air conditioner units do not have such a function, then those units will not run in the specified mode. When setting the schedule, consider what functions are supported by the air conditioner units.

Note: When setting a schedule for all groups or for a block, it is possible to set prohibit remote controller items individually. When allowing remote controller operation under K control, however, all items must be set enable.

Note: When setting a schedule for ventilator units, the temperature setting is not displayed. Moreover, the prohibit remote controller operation is simply [ON/OFF].



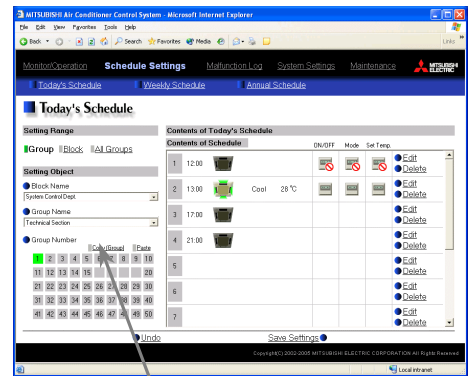
OK Button

### (3) Copy a schedule to another group

When copying a schedule of the day between each group, click "Copy (Group)". The color of the button turns to green (which means the button is selected). Select the desired group, and click "Paste" button.

Note: The schedule of the air conditioner cannot be copied to the ventilation equipment (LOSSNAY), and the schedule of the ventilation equipment cannot be copied to the air conditioner.

Note: The operation mode that can be pasted and the temperature setting range vary depending on the unit type.



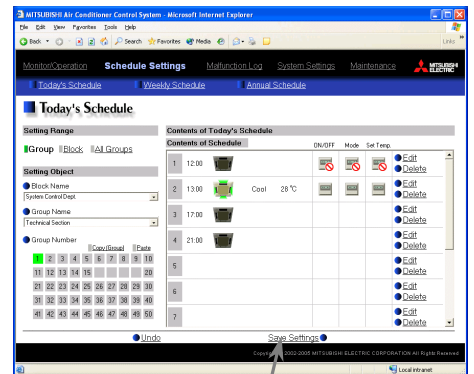
Copy (Group) / Paste

### (4) Save the contents of schedule

After you have finished setting the contents of the schedule, save the schedule setting by clicking the [Save Settings] button.

If the contents of the schedule setting have changed since the previous save, you can click the [Undo] button to restore the setting contents back to the saved settings.

Note: When saving a schedule setting for all groups or for a block containing multiple groups, it can take several minutes until the setting is complete due to the large number of units being set.



Save Settings button

## 3-7 Checking the Malfunction Log

Click the menu item [Malfunction Log] to display a log of unit errors (the last 64 errors). Click the sub menu [Communication Error] to display, the M-NET communication error log.

**Unit error log**  
Click to display the unit error log.

**Communication error log**  
Click to display the communication error log.

**Clear log**  
Click to clear the error log.

**Update to most recent condition**  
Click to update the screen so that the most recent operation condition is shown.

**Occurred time**  
The date and time of error is displayed here.

**Error source address**  
The unit address of where the error occurred is displayed here.

**Error detection source address**  
The unit address of where the error was detected is displayed here.

**Error code**  
The error code of the error is displayed here.

**Error recovery date and time**  
The date and time of the error recovery is displayed here.

	Time Occurred	Address (Detection)	Error Code	Time Recovered
1	26-03-2002 16:05:09	051 (002)	1302	26-03-2002 17:39:21
2	26-03-2002 15:56:11	051 (001)	1302	26-03-2002 16:02:16
3	26-03-2002 15:37:12	051 (051)	0403	26-03-2002 15:49:09
4	26-03-2002 02:03:39	051 (001)	1302	26-03-2002 09:05:09
5	25-03-2002 19:14:03	051 (001)	1302	25-03-2002 21:17:56
6	25-03-2002 11:54:42	051 (001)	1302	25-03-2002 12:04:12
7	25-03-2002 09:58:19	001 (001)	5102	25-03-2002 11:05:39
8	25-03-2002 09:50:50	001 (001)	5102	25-03-2002 09:55:30

Item	Description
Unit error log	Click [Unit Error] to display the unit error log.
Communication error log	Click [Communication Error] to display the M-NET communication error log.
Update to most recent condition	Click [Update] to ensure the displayed items reflect the most recent condition. When [Auto] is selected, information is updated automatically every minute to reflect the latest information.
Clear log	Click [Clear Log] to clear the error log that is being displayed.
Time Occurred	The date and time of when the error occurred is displayed.
Error source address	The unit address of where the error occurred is displayed.
Error detection source address	The unit address of where the error was detected is displayed.
Error code	The error code of the error is displayed.
Time Recovered	The date and time of the error recovery is displayed.

### 3-8 Setting the Current Date and Time

Click the menu item [System Settings] and the Date/Time Setting screen will appear. Enter the current date and time and then press the [Save settings] to set it.

**Summer time setting**  
Click to set the daylight saving time.

**Refresh**  
Acquires the current Date and Time from G-50A.

**Current date/time**  
Enter the current date and time here.

**Save settings**  
Click to set the current date and time.

Item	Description
Current date/time	Enter the current date and time. For the date, use the format [day - month - year].
Save Settings	Click the [Save Settings] to set the current date and time.
Refresh	Acquires the current Date and Time from G-50A.
Summer time setting	<p>Click and tick the "Automatically adjust clock for daylight saving changes" box to adjust the daylight saving time automatically, and select your own country.</p> <p>Note: If your own country is not in the selection bar, select "Custom Settings". Click "Custom Settings" button that will appear on the right to set the daylight saving time.</p> <p><b>Daylight saving date and time</b> Set the daylight saving time.</p> <p>Custom Setting Screen</p>

## 3-9 Registering Users

Click the menu item [System Settings] and then click [User Registration] to display the User Registration screen.

Please use this screen to add or modify a user name and password to login to the G-50A, and to register an air conditioner that can be operated by a public user. If the air conditioners that can be operated have been specified, when a public user logs in, that user will only be able to view and operate the air conditioners that were specified.

Note: Manager : User who logs in from [../administrator.html].

Public User : User who logs in from [../index.html]. (Public users can only operate air conditioners.)

**User information formangers**  
The manager's user name and the air conditioners that can be used are displayed here.

**Public user information**  
The user names of the public users and the air conditioners that each user can use are displayed here.

**User name**  
The user's name is displayed here.

**Undo button**  
Click to undo any changes.

**Available air conditioners**  
The air conditioners that can be operated are displayed here. When you position the cursor over an icon, the group name is displayed.

**Edit button**  
Click to set the user information.

**Delete button**  
Click to delete the user information.

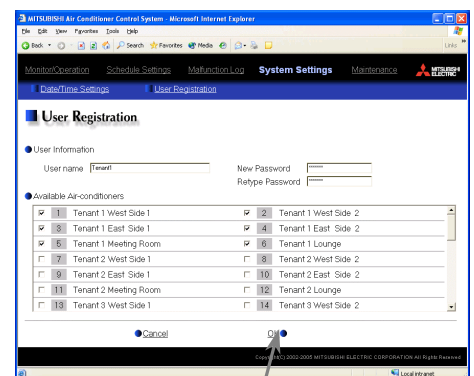
**Save Settings button**  
Click to save the user information. The setting will not be saved unless you click this button.

### (1) Add or edit user information

Click an [Edit] button in the User Information display to display the screen for setting user information. Enter the user name and password and select the air conditioners available to that user and click [OK].

Note: When a public user logs in, only the air conditioners specified here will be available to that user.

Note: Because managers can always operate all air conditioners, you cannot select available air conditioners for the manager.



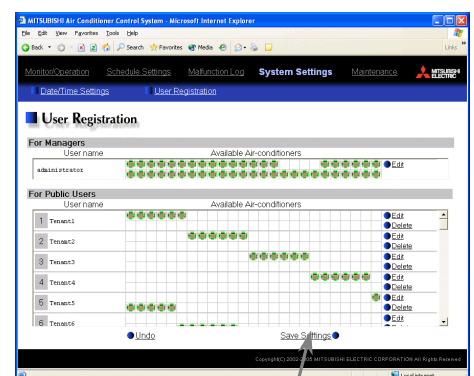
OK button

### (2) Save user information

When you have completed the user information setting, click the [Save Settings] button to save the user information.

If you want to undo the settings you have just made, click the [Undo] button.

Note: If you make changes to user information but move to another page without clicking the [Save Settings] button, the changes you made will not be reflected. Always save your settings by clicking the [Save Settings] button.



Save Settings button



### 3-10 Checking the Send Mail Log

Click the menu item [Maintenance] to display the log of mail sent when an error occurred and after error recovery. In order for a mail to be sent when an error occurs, the date related to sending the mail must be to set using Initial Setting Tool.

**Clear log**  
Click to clear the send mail log.

**Update to most recent condition**  
Click to update the screen so that the most recent condition is shown.

**Send date/time**  
The date and time when the mail was sent is displayed here.

**Error source address**  
The unit address of where the error occurred is displayed here.

**Error code**  
The error code is displayed here.

**Send mail status**  
This indicates whether the mail was successfully sent by displaying [OK] or [NG].

**Error status**  
This indicates whether mail was sent when error [Occurred] or after error [recovery].

	Date/Time	Unit Address	Error Code	Error Status	Send Mail Status
1	26-03-2002 18:29:04	013	6607	Occurred	OK
2	26-03-2002 16:28:27	051	1302	Occurred	OK
3	26-03-2002 02:25:38	051	1302	Recovery	OK

Item	Description
Update to most recent condition	Click [Update] to ensure the displayed items reflect the most recent condition. When [Auto] is selected, information is updated automatically every minute to reflect the latest information.
Clear log	Click [Clear Log] to clear the send mail log.
Send date/time	The date and time of when the error occurred is displayed.
Error source address	The unit address of where the error occurred is displayed. Note: If an error occurs on general equipment, PLC number for General Equipment (row number 1 to 20 that PLC error mail setting is made on initial setting Web) and General Equipment number (up to 32 pieces of general equipment that are controlled by PLC for general equipment) will appear.
Error code	The error code of the error is displayed.
Error status	This indicates whether mail was sent when error occurred or after error recovery.
Send mail status	This indicates whether the mail was successfully sent by displaying [OK] or [NG].

# 4 Registering a License for Optional Functions

Given below is an explanation on how to register a license for optional functions. In the Login screen for managers (see 3-1), click [Registration of Optional Functions] and the Registration of Optional Functions screen will appear.

Please ask the dealer you purchased the product from for more details on the optional functions and how to purchase a license number.

**Sub menu**  
Click to return to the Login Page.

**Optional function selection box**  
Select the optional function you want to register.

**License number entry field**  
Enter the license number required for registration.

**Current Status**  
This indicates whether the optional function is available for use.

**Software version**  
Software version is displayed.

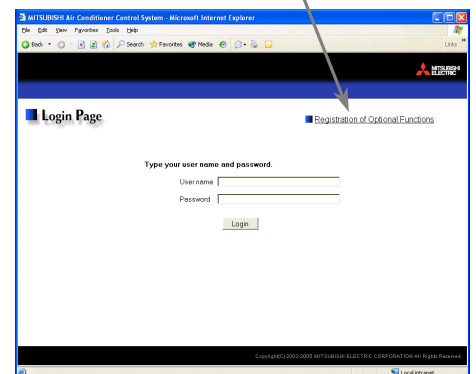
**Registration of license button**  
Click to register your license.

## (1) Open the Registration of Optional Function screen

Enter the web page address in the web browser address field, click the Enter key on the keyboard to display the Login screen (see 3-1).

Click on this screen's menu item [Registration of Optional Functions] to open the Registration of Optional Functions screen.

Registration of Optional Functions

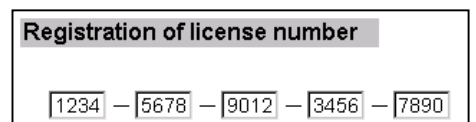
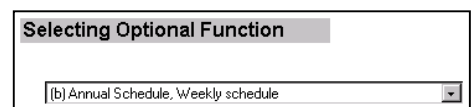


## (2) Register an Optional Function

First select the optional function you wish to register from the selection box in the Selecting Optional Function section. When an optional function is selected, the Current Status section will indicate whether it is available for use.

Next enter the license number you purchased for the optional function in the license number entry field and click the [Registration of license] button. Once this is done, the optional function will be available for use.

If you were unsuccessful in registering an optional function, check that you did not enter the wrong license number by mistake, that the correct optional function was selected from the selection box, and that the G-50 main unit's date and time are set correctly.





HEAD OFFICE: MITSUBISHI DENKI BLDG., 2-2-3, MARUNOUCHI, CHIYODA-KU, TOKYO 100-8310, JAPAN

WT03796X06