
OPERATING MANUAL (CONTROL)

MELANS (MJ-300)

FOR FAO

CONTENTS

1. CAUTIONS ON USAGE.....	1
2. PART NAMES AND FUNCTIONS.....	2
2.1 OUTLINES.....	2
2.2 WINDOW STRUCTURE.....	2
2.3 USING THE MOUSE.....	3
2.4 AVAILABLE FUNCTIONS.....	4
3. PRESETTING BEFORE USE.....	6
3.1 SCHEDULE SETTING.....	6
4. NORMAL OPERATION	11
4.1 OPERATION ON/OFF	15
4.2 OPERATION STATUS MONITORING	16
4.3 OPERATION MODE SWITCHING	18
4.4 REMOTE CONTROLLER INACTIVATING	20
4.5 TODAY & TOMORROW SCHEDULE CHANGING	22
5. SCHEDULE OPERATION CHANGING	24
6. OPERATION FOR MAINTENANCE	27
6.1 ABNORMALITY & OPERATION HISTORY	27
6.2 CUMULATIVE OPERATION TIME MONITORING	30
6.3 FILTER RESET	31
7. IN CASE OF TROUBLE	32
8. RESTRICTIONS ON SYSTEM OPERATION	33
9. MAINTENANCE AND SERVICES	34

MITSUBISHI ELECTRIC CORPORATION
LIVING ENVIRONMENT SYSTEMS ENGINEERING CENTER

1. Cautions on usage

(1) Confirmation of ground

For safety, make sure the system is properly grounded from the ground terminal.

(2) Installation of main unit

Keep the main unit away from the direct sunlight.

Also, DO NOT install where the unit is exposed to rain, as it may result in the electric leakage and damage to internal electronic parts.

Once installed, the main unit shall not be relocated easily.

(3) Power supply

After installed and adjusted, the main unit shall be continuously supplied power, excepting for the servicing purpose.

Otherwise, the abnormality indication will result.

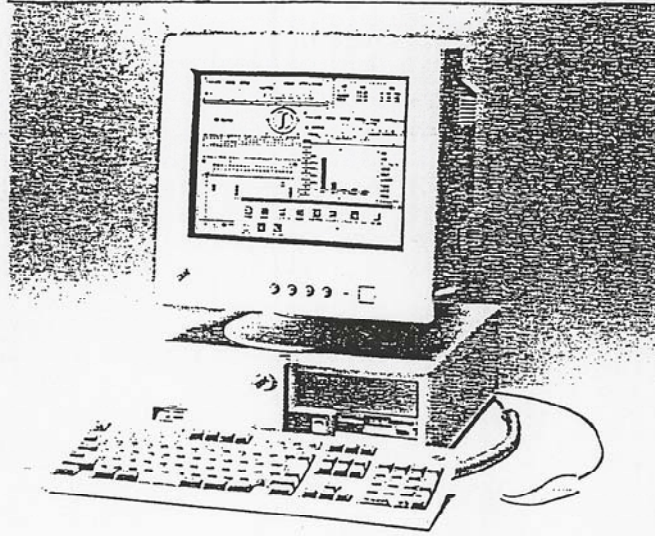
(4) Screen saver

When not in use, the window is switched to the screen saver mode to prevent burning.

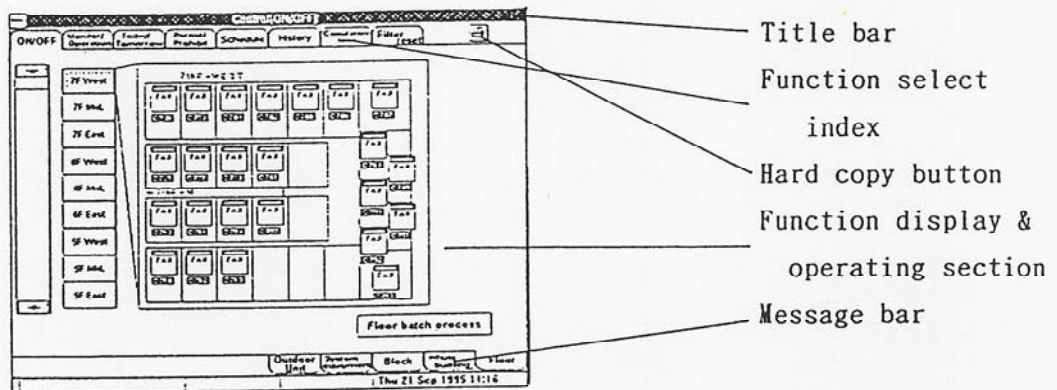
Moving the mouse during the screen saver mode will return the screen to the original status.

2. Part names and functions

2.1 Outlines



2.2 Window structure



The control window is composed as above. This window features that the functions designated by the function select buttons are displayed on the function display and operating section. The hard copy button can be used during any operation.

Title bar: Indicates the function currently in operation.

Function select index: Used to select each function.

Hard copy button: Used to print the display on display. (Every content on display can be printed.)

Function display & operating section: Used to display and operate the functions selected in the function select index.

Message bar: Indicates the current time and messages on operation.

If trouble has taken place, its level (serious or slight) will be indicated until the trouble is released.

2.3 Using the mouse

A mouse is used for the operation of the system.

Place the mouse on a flat surface with a little friction.

The code-connected side is the upper side of the mouse.

The mouse is equipped with two buttons.

Hold the mouse, and lightly touch the buttons with the forefinger and the middle finger.

The left button is a main button and used for the operation mentioned below.

When moving the mouse, keep your eyes upon the mouse pointer (a moving arrow) on the display).

To move the pointer largely on the window, move the mouse and lift in the air to return to the original position.

While the mouse is lifted, the mouse pointer will not move.

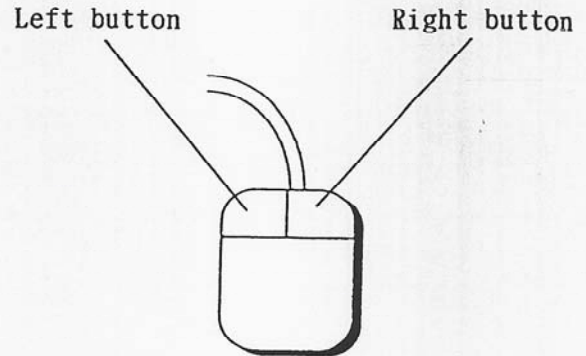
The following terms describe actions you can perform with the mouse.

Click: Quickly press and release the mouse button.

Double click: Click the mouse button twice in rapid succession.

Drag: Move the mouse until the tip of the pointer rests where you want to point, and move the mouse while you press and hold the mouse button.

(Used for time setting, etc.)



Upper side of the display

2.4 Available functions

This operating machine has two major functions.

- (1) Monitoring air conditioner operating conditions and turning the air conditioners ON/OFF in a batch operation
- (2) Programming the system to execute the above function
(Refer to OPERATING MANUAL - SITE ADJUSTMENT.)

This manual describes mainly the function (1).

The function (1) consists of the following items.

The window that displays this function is referred to as the Control window.

- Air conditioner ON/OFF → Refer to Sections 4.1 and 4.2.
Turns the air conditioners ON/OFF and monitors the operating status in a group, floor, or block unit, or in the whole building.
- Air conditioner control → Refer to Section 4.3.
Controls the air conditioners in a group, floor, or block unit, or in the whole building, concerning the operation mode (HEAT/FAN/COOL/DRY) set temperature, air speed, air flow direction, louver operation, and ventilation switching.
- Priority command → Refer to Section 4.4.
Inactivates the remote controllers in a group, floor, or block unit, or in the whole building, enabling the centralized control.
- Schedule setting → Refer to Section 3.1.5.
Presets the operation schedule in a group, floor, or block unit, or in the whole building. The air conditioners operate automatically according to the persetting contents.
- Today and tomorrow schedule change → Refer to Section 4.5.
Changes the operation schedule of only today or tomorrow in a group, floor, or block unit, or in the whole building. After the changed schedule is completed, the operation will return to the normal schedule.

- History → Refer to Section 6.1.
Indicates the abnormality or operation history in a group, floor, or block unit, or in the whole building.

- Cumulative time → Refer to Section 6.2.
Indicates the cumulative operation time in a group unit.

- Filter reset → Refer to Section 6.3.
Resets the Filter sign in a group unit.

The function (2) consists of the following items.

The window that displays this function is referred to as the initial window.

- System programming
Presets the machines to be connected, groups the air conditioner groups, and prepares floor plans.

- Time setting
 - Presets the current time.
 - Summer time adjustment

- Louver, vane, and air speed setting
Presets the functions operatable on the Monitor/Operation window.

3. Presetting before use

The following setting is required to efficiently use the functions of this operating machine. Before operating, refer to <Basic operation> in Section 4, "Normal operation".

- (1) For scheduled operation
Set the schedule.

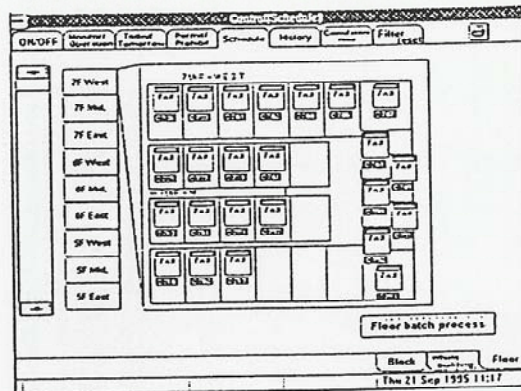
3.1. Schedule setting

Function Sets weekly schedule or particular day schedule.

Controllable units Group, Floor, Block, Whole building, System equipment

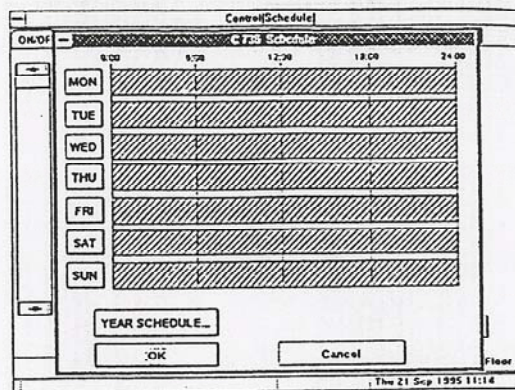
How to set

- ① Click the Schedule button.
- ② Designate a section to program schedule.
By choosing the Whole building button, schedule for all groups (on each floor) in the whole building can be set. This schedule is the same as set in a group unit. When adjusting the schedule by group, designate the group at first.



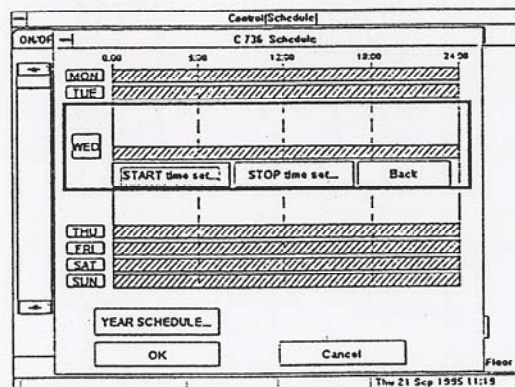
③ The Schedule window opens for the designated section.

④ Choose the day of the week, using the MON~SUN buttons.



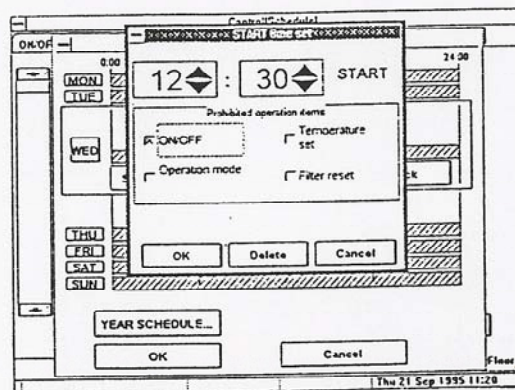
⑤ The work space of the selected day (operating button location) opens.

⑥ Click the START time set button.



⑦ The START time set window opens.

⑧ Set the desired time. Click the Δ / ∇ buttons beside HOUR and MIN to change the time. The buttons beside the HOUR are in hour units and the buttons beside the MIN are in minute units.



⑨ Click the OK button.

⑩ The START time set window closes.

Another method is available.

Close the START time set window without operating on the window, and then drag the \blacktriangledown ON or \blacktriangledown OFF button to the desired time.

Repeat the steps from ⑥ to ⑩ for each desired time setting.

⑪ Click the button to return to the work space on the schedule window.

⑫ Click the OK button.

If the CANCEL button is clicked, all settings will be cleared.

Application To integrate the remote controller prohibit command in the schedule (Not settable to system equipment)

①~⑦ Same as above

⑧ Choose any items to inactivate, from among the remote controller operation prohibit items on display.

⑨ Click the OK button.

Application When setting special schedule on a particular date, differently from the weekly schedule

①~③ Same as above

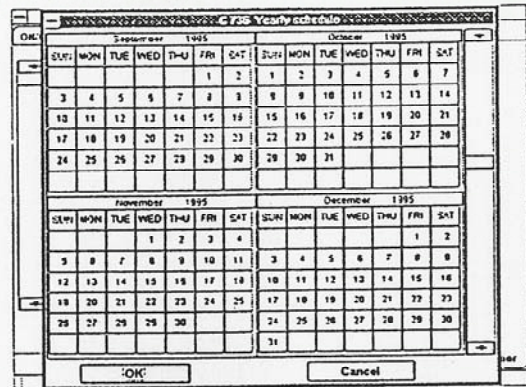
④ Click the YEAR SCHEDULE button.

⑤ The yearly schedule window opens.

⑥ Designate the date to set special schedule.

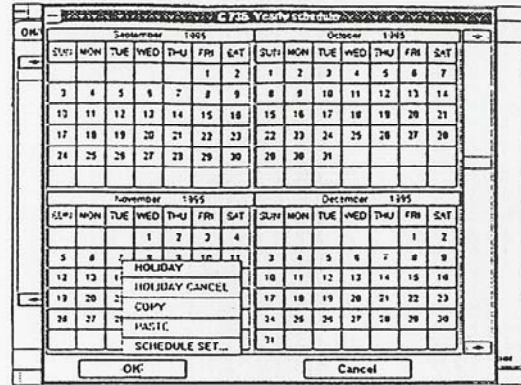
Move the scroll bar to display the desired month.

Click the desired date.



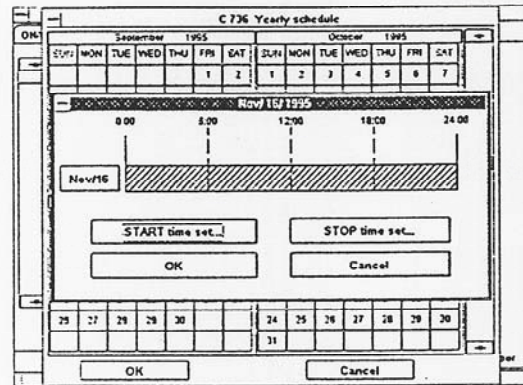
⑦ The menu appears.

⑧ Click the SCHEDULE SET button.



⑨ The schedule set window opens.

⑩ Click the START time set button.

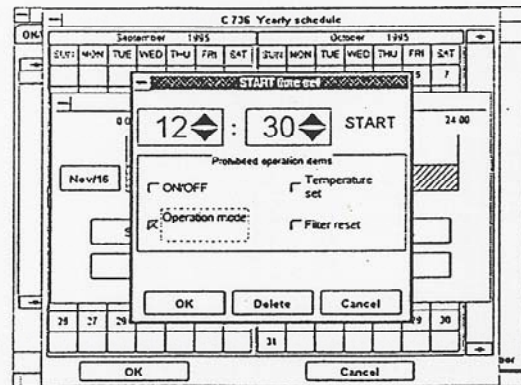


⑪ The START time set window opens.

⑫ Set the desired time using the Δ / ∇ buttons.

⑬ Click the OK button.

⑭ The START time set window closes.



Repeat the steps ⑩~⑭ for each desired time setting.

(The operation stop time can be set in the same way, except for using the STOP time set button.)

⑮ Click the OK button.

⑯ The special schedule window closes, and the designated date is underlined.
The special schedule can be copied to another date. Choose the date on which the special schedule has been set, and let the menu appear to choose the COPY command. Choose another date and let the menu appear to choose the PASTE command. Now the schedule has been copied.

⑰ Click the OK button.

Application When cancelling the holiday setting on a certain day

①~⑦ Same as above

⑧ Designate a date to cancel the holiday mode.

⑨ The menu closes and the designated holiday changes to reverse image.
By choosing the holiday again, the menu appears. Click the HOLIDAY CANCEL command, and the holiday setting will be cancelled.

⑩ Click the OK button.

4. Normal operation

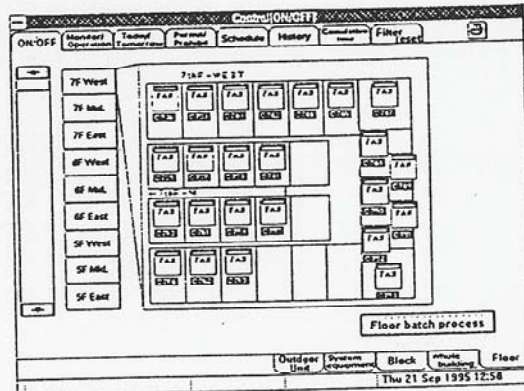
The Control window is used for normal operation.

By choosing a function in the function select index, the details of the function will be displayed.

<Basic operation>

(1) Choosing function

Click a desired function in the function select index.

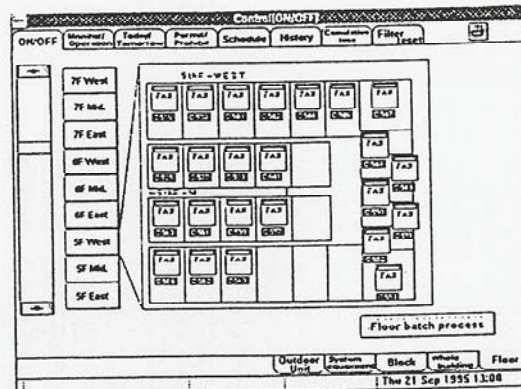


(2) Designating a section to control

To designate a group (room):

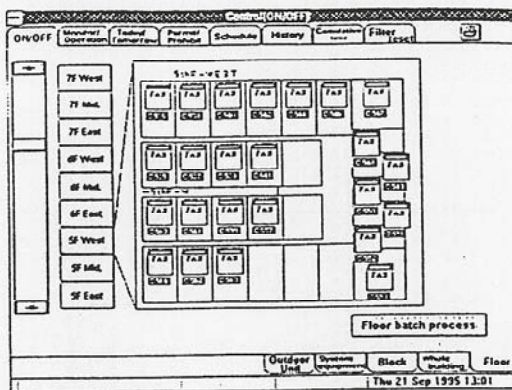
- ① Click the Floor button.
- ② Use the floor scroll bar to display the desired floor.
- ③ Click the icon of the desired group (room).

The group icon displays the status (ON/OFF/abnormal), the operation mode, and the set temperature.



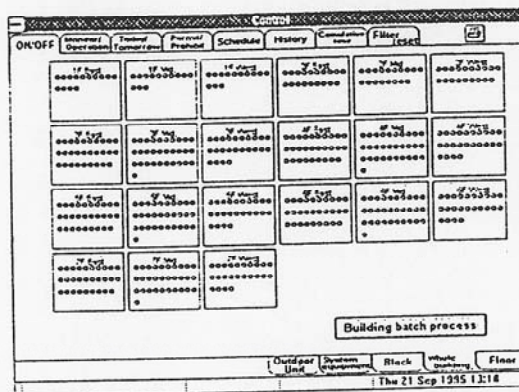
To designate a floor:

- ① Click the Floor button.
- ② Use the floor scroll bar to display the desired floor.
(If the floor is already displayed, skip this step.)
- ③ Click the desired floor button.
- ④ Click the Floor batch process button to operate the function.



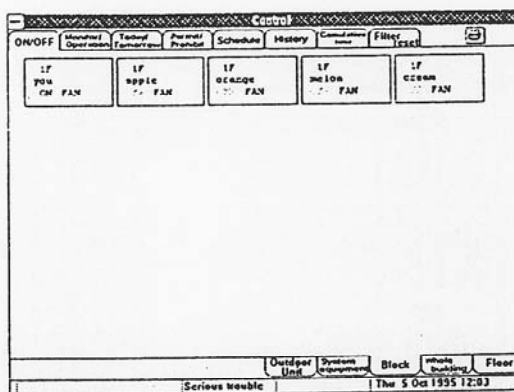
To designate the whole building:

- ① Click the Whole building button.
 - ② Click the Building patch process button.
(Same procedure for the whole building monitoring.)
- The whole building window displays the ON/OFF/abnormal status in a group unit.



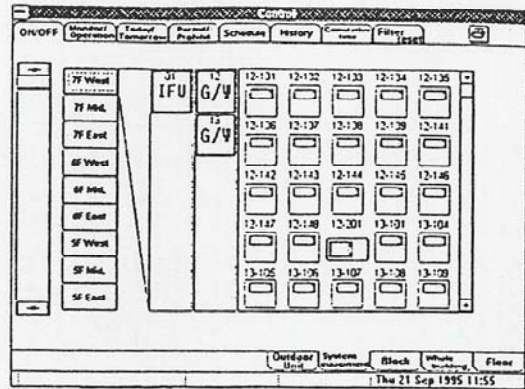
To designate a block:

- ① Click the Block button.
 - ② Use the block scroll bar to display the desired block.
 - ③ Designate a block.
(Click the inside of the frame of the block.)
- The block window displays the ON/OFF/abnormal status, the operation mode, and the set temperature.



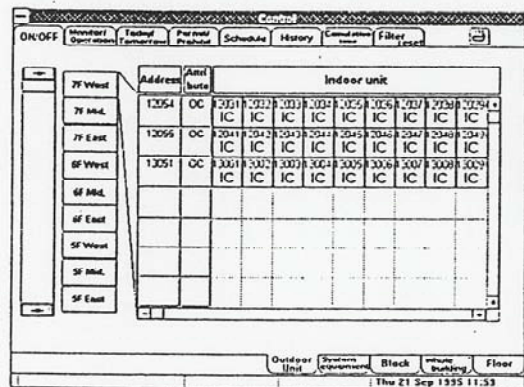
To designate remote controller,
G/W, and IFU:

- ① Click the System equipment button.
- ② Use the scroll bar to display the desired equipment.
- ③ Choose the desired equipment. (Click the icon of the desired equipment.)



To designate an outdoor unit:

- ① Choose the Outdoor unit button.
- ② Use the scroll bar to display the desired outdoor unit.
- ③ Choose the desired unit. (Click the button of the desired unit.)



The controllable units are as follows:

Function Unit	ON/OFF Monitor/ operation	Schedule Today/ Tomorrow	Remote controller prohibit	History	Cumulative time
Group	○	○	○	○	○
Floor	○	○	○	○	-
Whole building	○	○	○	○	-
Block	○	○	○	○	-
Serial inter- face (IFU)	× ※ 1	×	×	○	-
Gateway (G/W)	× ※ 1	×	×	○	-
Remote controller	× ※ 1	×	×	○	-
Outdoor unit	× ※ 1	×	×	○	-

※ 1 Only monitoring is available.

(3) Make a hard copy.

Turn the printer ON.

Make sure stock form is set. (If not, refill the stock form.)

Press the hard copy button while the window to print stays on display.

The print of the window will be output.

4.1 Operation ON/OFF

Function Turns the air conditioners ON/OFF.

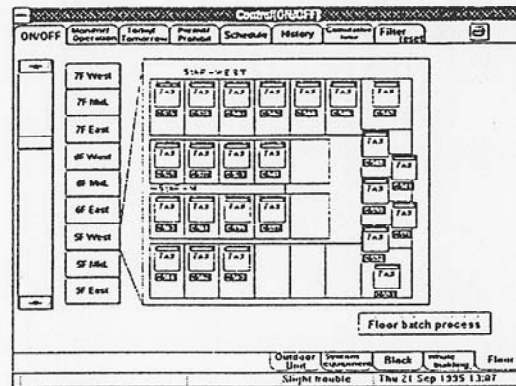
Controllable units Group, Floor, Block, Whole building

How to operate

① Click the ON/OFF index.

② Designate a section to turn ON/OFF the air conditioners.

For example, to designate the conference room on 5F, click the floor button "5F", and then click the group icon of the conference room.



③ By designating a section where the air conditioners are operating, the operation will stop and the display will change accordingly.

For the system equipment, the operating buttons are provided for only the units to which operation ON/OFF is possible. Each click of the button reverses ON and OFF.

CAUTION: If the desired group is indicated as abnormal (in yellow), click it to reset the abnormal status.

4.2 Operation status monitoring

<u>Function</u>	Indicates the operating status of air conditioners.
<u>Controllable units</u>	Group, Floor, Block, Whole building, G/W, IFU, Remote controller Batch display of floor, block, or whole building will not be displayed unless the units have the same status. For G/W, IFU, and remote controller, whether normal or abnormal will be displayed only.

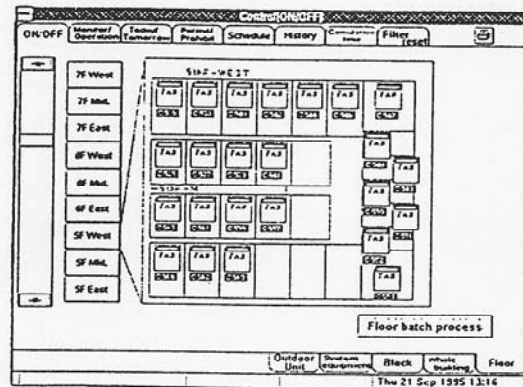
How to operate

① Click the ON/OFF index.

② Designate a section to monitor.

For example, to monitor 5F, click the floor button "5F".

③ The window changes to the display of the designated section.



Application To monitor the operating status of all the groups in the building

① Same as above

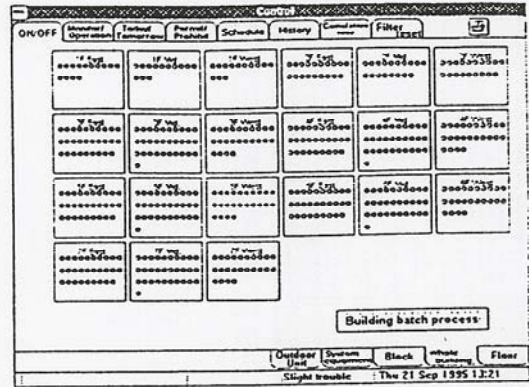
② Click the Whole building index.

- ③ The window changes to the whole building display.

On each floor, the operation status is indicated by the following three colors:

- (Red) for operation ON
- (Green) for operation OFF
- ◎ (Yellow) for abnormal status

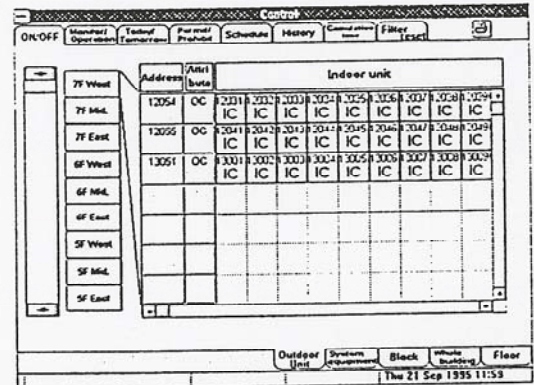
While the operation status is on display, only the Whole building button is operative for turning ON/OFF or switching operation mode.



Application

To monitor the operating status of outdoor units

- ① Click the Outdoor unit index.
- ② The column located on the right hand side of the outdoor unit column displays the indoor units that are connected to the outdoor unit.



CAUTION: If the outdoor unit is indicated as abnormal (marked with a cross), click the outdoor unit column to reset the abnormality for the connected indoor units.

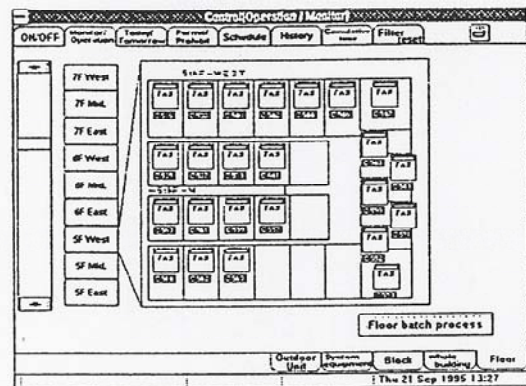
4.3 Operation mode switching

Function Switches the operation mode, and changes the set temperature, air speed, etc.

Controllable units Group, Floor, Block, Whole building
Batch display of floor, block, or whole building will not be displayed unless the units have the same content.

How to operate

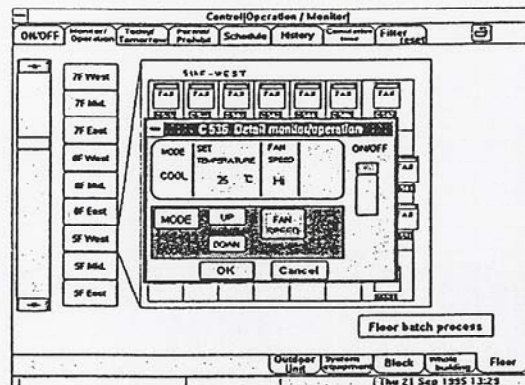
- ① Click the Monitor/Operation index.
- ② Designate a section to switch the operation mode.
→ Refer to <Basic operation> "Designating a section to control" on page 11.



- ③ The detail monitor/operation window opens.

- ④ Choose the desired function.

To switch the operation mode, click the MODE button.



In addition, the following monitoring/operation is available.

1) Changing set temperature

Use the Δ / ∇ buttons to change the set temperature.

Setting range depends on the operation mode as follows.

HEAT 17~28°C

COOL 19~30°C

DRY 19~30°C

FAN Set temperature can not be set.

In the batch setting (floor, block, whole building), if the operating modes are different, set temperature range is limited to 19~28°C.

2) Changing air flow speed

Click the FAN SPEED to change the air flow speed.

The speed changes in the order Hi→Lo→Hi .

For 2-stage speed --- It means the air flow speed.

3) Filter sign

This sign indicates the filter clogging.

When this sign appears, clean the filter of the air conditioner.

4) ON/OFF

This button is used to turn the air conditioner ON/OFF.

The current status is indicated by the square above the button in three colors: red for "operation ON", green for "operation OFF" and yellow for "abnormal".

Each click of the button reverses the operation ON and OFF.

5) To change air flow direction

Use the AIR DIRECTION button to change the air flow direction.

The air flow direction changes. Example ; 100% downward → 80% downward
→ 60% downward → Horizontal → Swing.

6) To switch louver operation

Use the louver button to turn the louver ON/OFF.

⑤ Click the OK button on the Detail monitor/operation window.

⑥ The Detail monitor/operation window closes.

At this time, the changed contents (operation ON/OFF, mode, set temperature) should be displayed in new status.

4.4 Remote controller inactivating

Function Prohibits the remote controller operation.

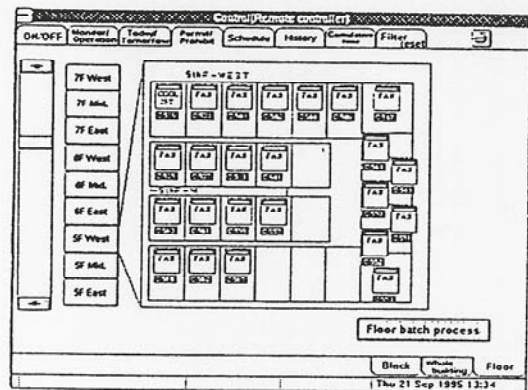
Controllable units Group, Floor, Block, Whole building
Batch display of floor, block, or whole building will not be displayed unless the units have the same content.

How to operate

① Click the Permit/Prohibit index.

② Designate a section to inactivate the remote controller.

If a group, floor, or block has a hand mark (☞), it shows the remote controller operation is prohibited.



③ The Permit/Prohibit window opens of the designated section.

④ Choose items to prohibit.

ON/OFF: Disables the remote controller to turn the air conditioners ON/OFF.

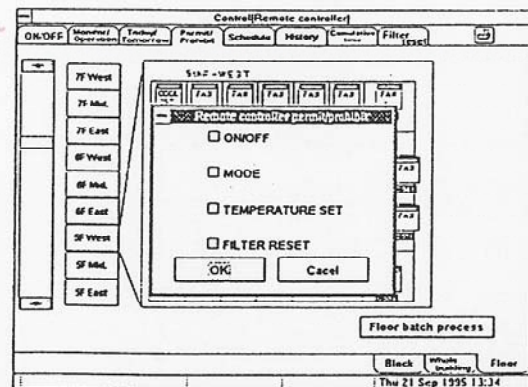
Other functions are operative.

MODE: Disables the remote controller to change the operation mode.

Other functions are operative.

TEMPERATURE SET: Disables the remote controllers to change the set temperature.

Other functions are operative.



FILTER RESET: Disables the remote controller to reset the filter sign. These four items can be combined freely.

⑤ Click the OK button.

⑥ The Remote controller permit/prohibit window closes.

A hand mark (~~X~~) will appear at the section where the remote controller operation is prohibited.

4.5 Today & tomorrow schedule changing

Function

Changes the weekly schedule temporarily for only today and tomorrow.

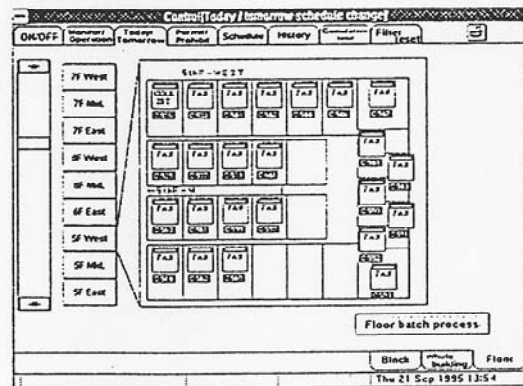
Controllable units

Group, Floor, Block, Whole building

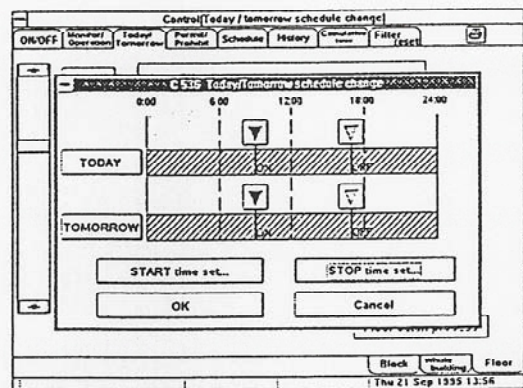
Batch display of floor, block, and whole building will not be displayed unless the units have the same schedule.

How to operate

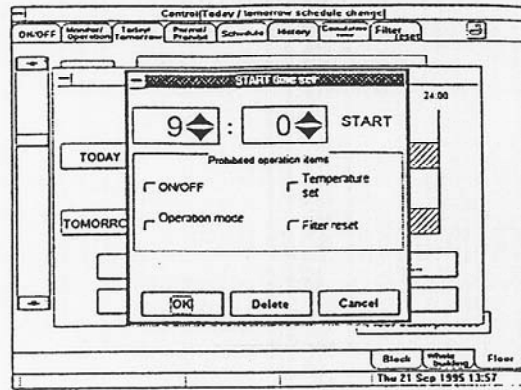
- ① Click the Today/
Tomorrow index.
- ② Designate a desired
section.
→ See "Designating a section
to control" on page 11.
For group or floor, open the
floor window. For block, open
the block window.



- ③ The Today/Tomorrow schedule
change window opens.
- ④ Click the START time set or
STOP time set button.
*Alternatively, drag the ▼
ON button or the ▼ OFF
button to the desired time.
While the mouse is dragged,
a digital clock appear
below the button.*



- ⑤ The START time set window opens.
- ⑥ Use the Δ ∇ buttons to set the desired time. The buttons beside the HOUR is in hour units and the button beside the MIN. is in minute units.



Application To integrate the remote controller prohibit command in the Today/Tomorrow schedule
(Not settable to Today/Tomorrow schedule of system equipment)

- ①~⑦ Same as above
- ⑧ Choose items to prohibit from among the remote controller prohibit items on display.
- ⑨ Click the OK button.

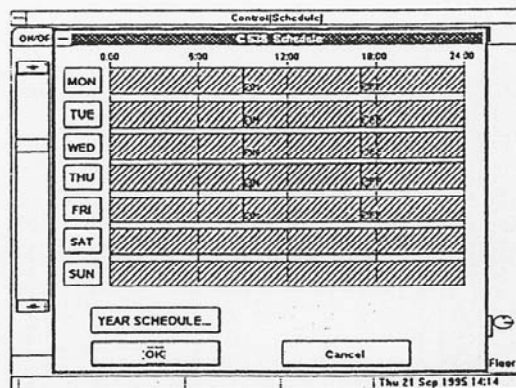
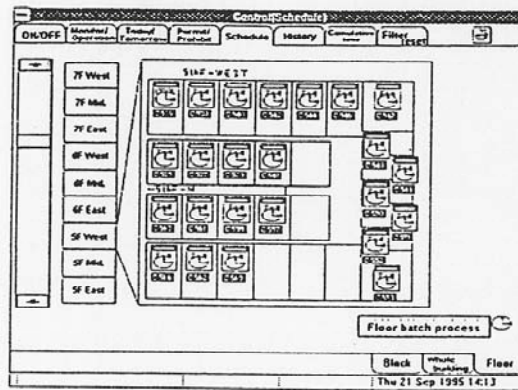
5. Schedule operation changing

Function Changes the weekly schedule and special day schedule.

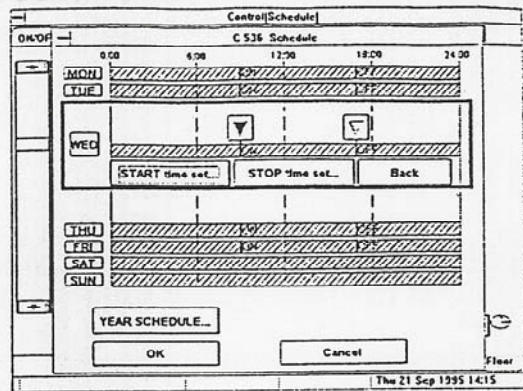
Controllable units Group, Floor, Block, Whole building
Batch display of floor, block, and whole building will not be displayed unless the units have the same schedule.

How to operate

- ① Click the Schedule index.
- ② Designate a section to change the schedule.
- ③ The schedule window of the designated section opens.
- ④ Designate the day of the week. For example, click WED button to change the schedule Wednesdays.
- ⑤ The work space (operating button location) opens for the designated day.

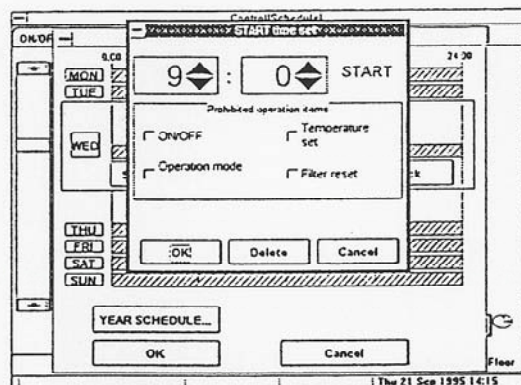


- ⑥ Drag the ▼ ON or ▼ OFF button to the desired time.
- ⑦ Click the button to return to the work space on the schedule window.
- ⑧ Click the OK button.
If the CANCEL button is pressed, all settings will be cancelled.



Application To set additional START(STOP) time

- ①~⑤ Same as above
- ⑥ Click the START(STOP) time set button.
- ⑦ The START(STOP) time set window appears.
- ⑧ Set the desired time by clicking the △▽ buttons for hours and minutes.
- ⑨ Click the OK button.
- ⑩ The START(STOP) time set window closes.



Another method is available.

Close the START time set window without operating on the window, and then drag the ▼ ON or ▼ OFF button to the desired time.

⑪ Click the button to return to the work spece on the schedule window.

⑫ Click the OK button.

If the CANCEL button is clicked, all settings will be canceled.

Refer to Section 3.1. for changing the remote controller operation prohibit items.

6. Operation for maintenance

6.1. Abnormality and operation history

Function

Shows the abnormality or operation history.

<Abnormal history> Air conditioner or transmission system abnormalities are memorized up to 500 cases.

<Operation history> Contents of air conditioner operation are memorized up to 500 cases.

Controllable units

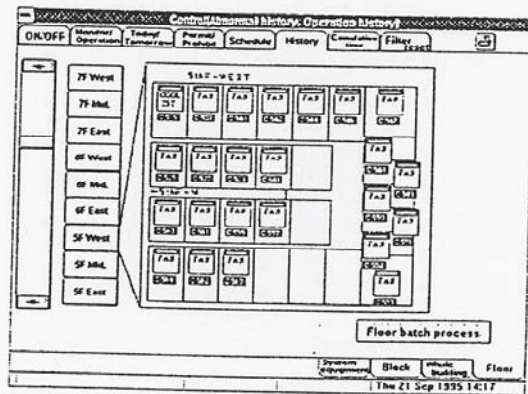
Group, Floor, Block, Whole building, G/W, IFU,
Remote controller

How to operate

① Click the History index.

② Designate a section to monitor the history.

③ The History window opens.

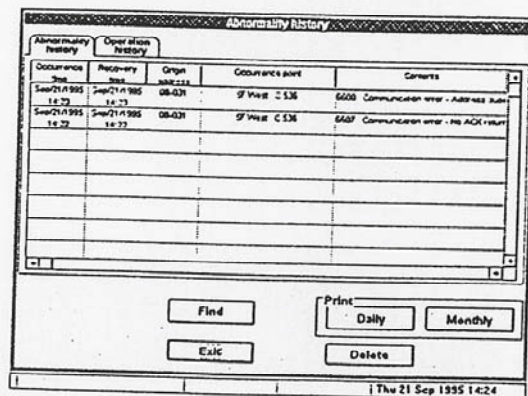


④ To monitor the abnormality history, click the Abnormality history button. (Just after the history window opens, this button is choosed.)

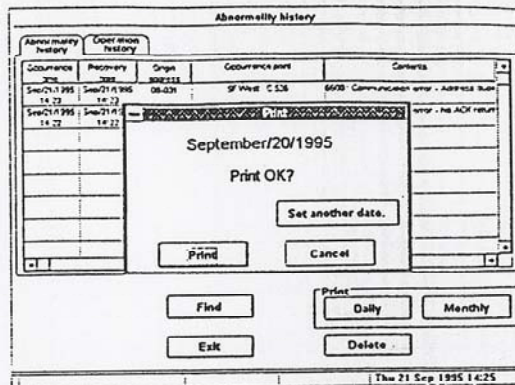
⑤ To print the history, click the Daily or Monthly button.

Daily: for daily report

Monthly: for monthly report

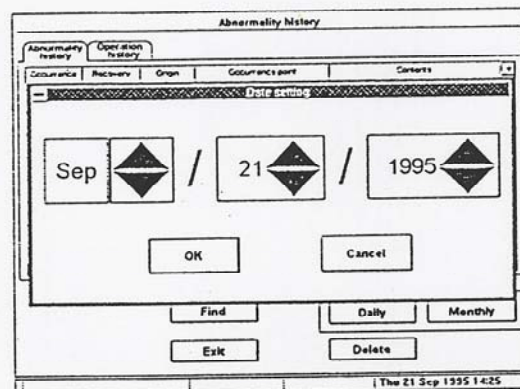


- ⑥ The Print confirm window opens.
- ⑦ Click the OK button.
- ⑧ The history (today or this month) is printed.
- ⑨ The Print confirm window closes.
- ⑩ The Operation history can be printed in the same way.



Application To print the abnormality history for the desired date or month (not today nor this month)

- ①~⑥ Same as above
- ⑦ Click the Date set (or Month set) button.
- ⑧ The Date or Month set window opens.
- ⑨ Use the Δ / ∇ buttons to designate te date or month.
- ⑩ Click the OK button.
- ⑪ The Print confirm window reappears.
- ⑫ Click the OK button.
- ⑬ The report of the designated date or month is printed.
- ⑭ The Print confirm window closes.



Application To delete the history

①~④ Same as above

⑤ Click the Delete button.

⑥ The Delete window opens.

⑦ Use the Δ / ∇ buttons to designate the period to delete.

⑧ Click the Delete button.

⑨ The Delete window closes.
Now the history is deleted for the designated period.

Abnormality history

Abnormality history

Occurrence time: Sep / 21 / 1995

Recovery time: Sep / 21 / 1995

Origin address: GW 1 Unit 001

Abnormality code: 0900

Buttons: Find, Exit, Print, Daily, Monthly, Delete

Status: The 21 Sep 1995 14:28

Application To search the history

①~④ Same as above

⑤ Click the Search button.

⑥ The Search window opens.

⑦ Choose an item to search.
Use the Δ / ∇ buttons if numeric value setting is needed.

⑧ Click the Search button.

⑨ The Search window closes,
and the contents of the designated item is displayed.

Abnormality history

Search (Abnormality history)

Occurrence time: Sep / 22 / 1995

Recovery time: Sep / 22 / 1995

Origin address: GW 1 Unit 001

Abnormality code: 0900

Buttons: Find, Cancel, Exit, Delete

Status: Fri 22 Sep 1995 16:04

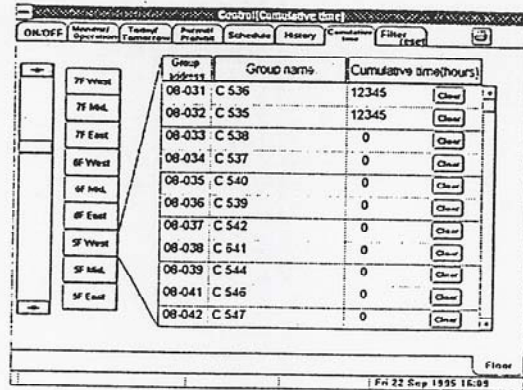
6.2 Cumulative operation time monitoring

Function Displays the cumulative operation time.

Controllable units Group

How to operate

- ① Click the Cumulative operation index.
- ② Click the Floor button.
- ③ If you prefer to clear the cumulative time, click the Clear button.

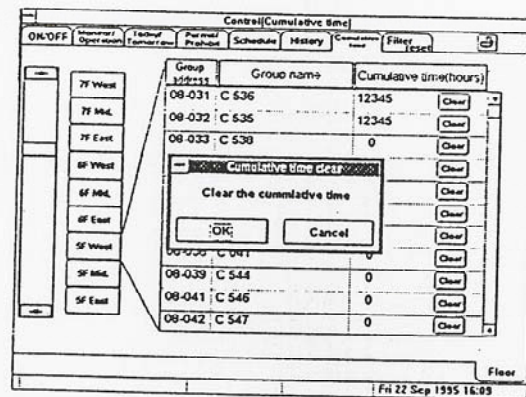


The screenshot shows a software window titled "Control(Cumulative time)". On the left, there is a vertical list of buttons labeled "7F West", "7F Mid.", "7F East", "6F West", "6F Mid.", "6F East", "5F West", "5F Mid.", and "5F East". A "Floor" button is located at the bottom right of this list. The main area of the window contains a table with the following data:

Group address	Group name	Cumulative time(hours)	Clear
08-031	C 536	12345	Clear
08-032	C 535	12345	Clear
08-033	C 538	0	Clear
08-034	C 537	0	Clear
08-035	C 540	0	Clear
08-036	C 539	0	Clear
08-037	C 542	0	Clear
08-038	C 541	0	Clear
08-039	C 544	0	Clear
08-041	C 546	0	Clear
08-042	C 547	0	Clear

At the bottom right of the window, the text "Fri 22 Sep 1995 16:09" is visible.

- ④ The Cumulative time clear window opens.
- ⑤ Click the OK button.



7. In case of trouble

If the following symptoms appear, check before calling for service.

Symptom	Cause	Treatment
The Control window not appear	No entry of initial data	Enter the initial data.
Not operative	During internal processing (Hourglass appears instead of pointer)	Wait until the hourglass disappears.
	During communication processing	Wait for a while and retry.
	During start-up process	Wait for a while and retry.
Buttons not work (Click not accepted)	Pointer not located at the center of button	Click the center of button from the front.
	Button invalid (if indicated in pale color)	This button is not operative.
No printing	Printer not connected with main unit	Connect the printer with the main unit.
	Printer not in active status	Press Print OK button.
Printing discontinued	No stock form	Refill stock form and press Print OK button.
Incorrect display of unit status	G/W or IFU trouble	Call for service technician.
	Transmission line broken	
	Breaker OFF or outdoor unit power failure	Check power supply.
Air conditioner stops when date changes.	Holiday setting in yearly schedule	Check yearly schedule and cancel holiday setting.

8. Restrictions on system operation

Note that the system has the following restrictions.

- Current time setting change

Even if the current time setting is backed in the same date, the schedule already executed will not repeat.

- Schedule setting 1

DO NOT program the schedule so as to start or stop the air conditioners in the period from 23:55 p.m. to 00:05 a.m.

In addition, DO NOT execute any schedule changing while in the period from 23:55 p.m. to 00:05 a.m.

Otherwise, operation will go wrong.

- Schedule setting 2

Avoid to set the START time and STOP time schedules to the same time.

Otherwise, operation will go wrong.

- Power supply OFF

Before turning the power supply OFF, be sure to shut down the system in the proper procedure. Refer to the OPERATING MANUAL (SITE ADJUSTMENT) for shut-down procedure.

- Operation for canceling

Depending on the model, the operating window may not be equipped with the CANCEL button. In this case, press the Esc button on the keyboard instead.

- Room temperature monitor

Use the Monitor/Operation function to monitor the room temperatures.

Room temperature is displayed below the target temperature on the Detail Monitor/Operation window.

9. Maintenance and services

Maintenance and services must be executed only by the service center authorized by Mitsubishi Electric Corporation.

Authorized service center

How to Add 2 Mr Slim Units to the Existing MJ300 System at Norton Street

- ~~Connect up the 2 new Mr Slim units to the existing 2-core communications cable that isaisy, chained on all the indoor units.~~
- Address the new Mr Slim units, using the SW2 dipswitches. ~~These should be addressed to the next available address, i.e. if the last current Mr Slim unit is address 30 the 2 new units should be addressed 31 and 32. (If you are installing a twin split, both indoor units should have the same address)~~ **THIS ADDRESS MUST BE HIGHER THAN ANY CITY MULTI UNITS ON THE GATEWAY. I.E. IF THE HIGHEST CM ADDRESS IS 25 MR SLIM ADDRESS MUST BE BETWEEN 26-50. K-COI ADDRESS = 200 + LOWEST MR SLIM ADDR.**
- Remove the CN40 plug from the new indoor units
- In the MJ300 click on Control (on/off) at the very top left hand edge of the screen, and select return to initial window from the drop down menu.
- Enter the password which is SYSTEM (this must be entered in capitals), and click OK
- Select the system set option
- If the icons for the indoor units are going to be on a new floor select floor number set and increase the number of floors accordingly, assign a name to these new floors by clicking on floor name setting. When this step is correct select End, and then set. **IF ON AN EXISTING FLOOR FLOOR NUMBER AND PLANE FIGURE DRAWING CAN BE SKIPPED**
- Select plane figure drawing, select the new floor that you have just added and if you want to add a drawing double click on the blank square, repeat this for any other new floors and then select End, then set.
- Unless another gateway has been added you can skip Connecting unit number set
- Select Connecting equipment Set and add the ~~2~~ new indoor units onto the grid. To do this click once on the IC button, and the click again to place it on the appropriate square on the grid depending on the address. I.e. if the new unit is address 30 click on the grid square 30. Once this has been completed for ~~both~~ **THE** units click on End, then Set. **ENSURE CORRECT GW IS SELECTED**
- The refrigeration System Set button can be skipped.
- Select the gateway set button. You need to tell the MJ300 which gateway is controlling any new floors that you have added, ~~in this case as there is only 1 gateway this will always be gateway one. To do this click in the first empty box next to the name of the new floors that have been added, set the gateway address~~
IF NO NEW FLOORS HAVE BEEN ADDED THIS CAN BE SKIPPED.

MJ 300, Adding Mr Slim Units

~~to 1 and click on OK. Once this has been complete for all new floor click on End, then Set~~

- Select Icon Arrange; select the floor that you want the new icon to represent the indoor unit to be place. Drag the icon to where you want to place it and click the mouse. If you wish to change the name of the icon click on the icon you have just placed select Name set and enter the name that you wish. Once this has been repeated for all unit select End, then Set
- Select group set select the floor with the new icons on and you need to assign the indoor units to each icon. To do this first click on the indoor unit address on the right hand side of the screen, place the RC icon that now appear directly over the top of the icon to be associated with that group and click, ~~once this has been completed for both indoor unit click end the set.~~ REPEAT PROCEDURE FOR THE K CONVEY
- The last two buttons can be ignored unless you want to specify blocks of units, and you haven't already specified a group name. YOU SHOULD NOW HAVE A BOX OPEN NEXT TO THE NEW ICON WITH BOTH THE INDOOR UNIT AND K-CON IN.
- Click on End at the system set screen and you will get a message asking if it is OK to transmit to the IFU, click on OK. Click on Louver, Vane, Air speed set and make sure that the louver and vane control are switch off for the new units, then select End.
- Finally click on Control, and you will return to the main part of the programme wait until the system initialises with this new data that you have just entered, during which time Serious trouble/Slight trouble may be displayed at the bottom of the screen. You should now have control of these new indoor units.