

The Renewable Solutions Provider  
Making a World of Difference



## The Mr Slim **Inverter** Cassette Range



Air Conditioning | Heating  
Ventilation | Controls

Mr.SLIM™



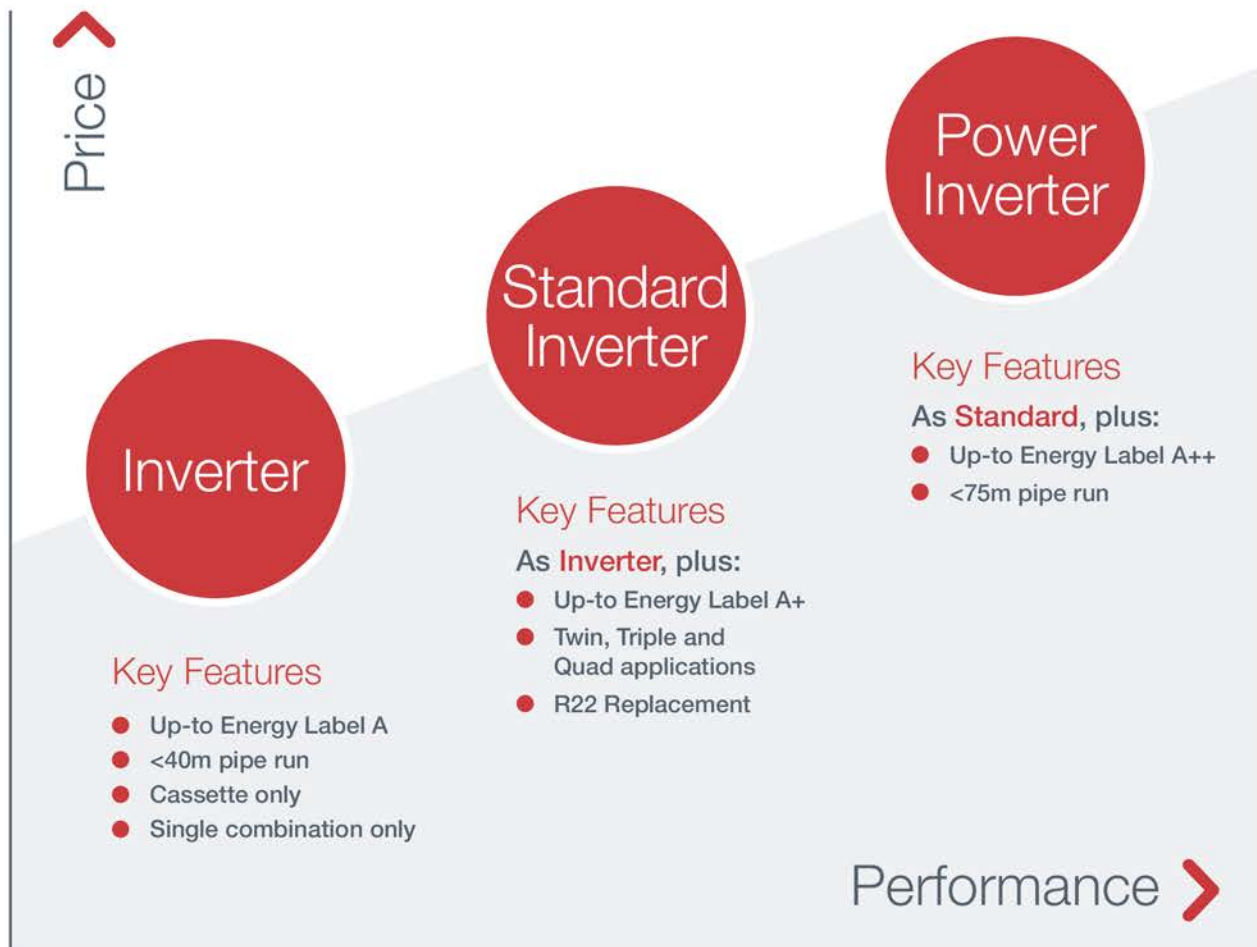


# Mr Slim Inverter Cassette Range



Ideal for small office,  
retail and leisure applications

The **Mr Slim Inverter Cassette Range** offers customers all the features and benefits of inverter technology whilst being extremely cost effective.





# Product Features

---

- Manufactured in the UK\*
- Swing Vane Mode with Auto Vane Shutter
- Auto-Restart
- Quiet operation
- 72 different airflow patterns - 2, 3 or 4 way discharge
- High ceiling compatibility through wide flow air outlets
- Auto-Changeover
- Hot Start - draught prevention
- Drain lift pump as standard
- Ceiling soiling prevention

\*Except SUZ-SA71VA



Cost  
Effective  
Efficiency



# Product Specifications

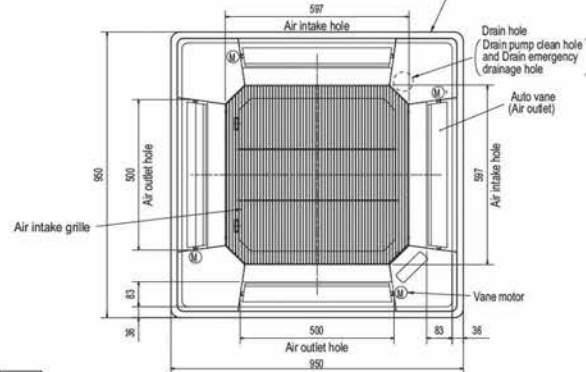
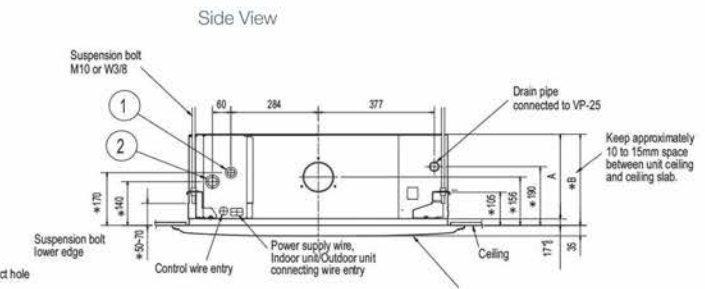
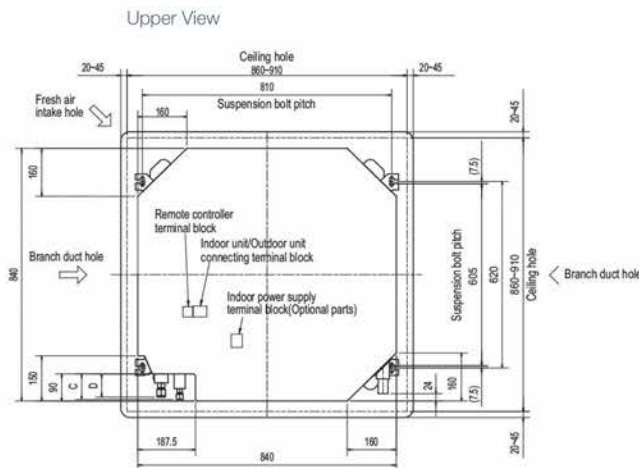
## Indoor Units



PLA-SP INDOOR UNITS		PLA-SP71BA	PLA-SP100BA	PLA-SP125BA	PLA-SP140BA
CAPACITY (kW)	Heating (nominal)	8.0 (2.6-8.9)	11.2 (4.5-11.5)	13.5 (5.0-15.0)	15.5 (5.0-17.0)
	Cooling (nominal)	7.1 (2.8-8.1)	9.4 (4.9-9.9)	12.3 (5.5-13.0)	13.0 (5.5-14.0)
	Heating (UK)	6.8 (2.2-7.6)	9.5 (3.8-9.8)	11.5 (4.3-12.8)	13.2 (4.3-14.5)
	Cooling (UK)	6.0 (2.4-6.9)	8.0 (4.2-8.4)	10.5 (4.7-11.1)	11.1 (4.7-11.9)
SHF (nominal & UK)		0.73	0.74	0.71	0.71
COP / EER (nominal)		3.21 / 3.21	3.21 / 3.01	3.41 / 3.01	3.21 / 2.61
SCOP / SEER (BS EN14825)		3.8 / 5.6	3.8 / 5.1	N/A	N/A
ErP ENERGY EFFICIENCY CLASS Heating/Cooling		A / A+	A / A	N/A	N/A
AIRFLOW (m <sup>3</sup> /min)		Lo-Mi1-Mi2-Hi	20-23-26-30	22-25-28-31	24-26-29-32
PIPE SIZE mm (in)		Gas/Liquid	15.88 (5/8") / 9.52 (3/8")	15.88 (5/8") / 9.52 (3/8")	15.88 (5/8") / 9.52 (3/8")
SOUND PRESSURE LEVEL (dBA)		Lo-Mi1-Mi2-Hi	28-30-32-34	32-34-37-40	34-36-39-41
SOUND POWER LEVEL (dBA)			56	62	63
DIMENSIONS (mm) Width x Depth x Height (Grille)		840 (950) x 840 (950) x 258 (35)	840 (950) x 840 (950) x 298 (35)	840 (950) x 840 (950) x 298 (35)	840 (950) x 840 (950) x 298 (35)
WEIGHT (kg) Unit / Panel		23 / 6	25 / 6	25 / 6	27 / 6
ELECTRICAL SUPPLY		Fed by Outdoor Unit	Fed by Outdoor Unit	Fed by Outdoor Unit	Fed by Outdoor Unit
FUSE RATING (BS88) - HRC (A)		6	6	6	6
INTERCONNECTING CABLE No. Cores		4	4	4	4
GRILLE REFERENCE		PLP-6BA	PLP-6BA	PLP-6BA	PLP-6BA
WIRED REMOTE CONTROLLER REFERENCE		PAR-31MAA	PAR-31MAA	PAR-31MAA	PAR-31MAA

### INDOOR UNIT DIMENSIONS

#### PLA-SP



Model	①	②	A	B	C	D	E
PLA-SP71BA	Refrigerant pipe ...φ9.52	Refrigerant pipe ...φ15.88	241	258			400
PLA-SP100BA	Flared connection ...3/8 inch	Flared connection ...5/8 inch	281	298	85	77	
PLA-SP125BA							440
PLA-SP140BA							

# Product Specifications

## Outdoor Units

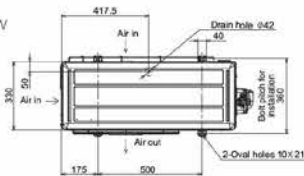


SUZ-SA / PUHZ-SP OUTDOOR UNITS		SUZ-SA71VA	PUHZ-SP100VHA	PUHZ-SP125VHA	PUHZ-SP140VHA	PUHZ-SP100YHA THREE PHASE	PUHZ-SP125YHA THREE PHASE	PUHZ-SP140YHA THREE PHASE
SOUND PRESSURE LEVEL (dBA)	Heating/Cooling	55 / 55	54 / 50	55 / 51	56 / 52	54 / 50	55 / 51	56 / 52
SOUND POWER LEVEL (dBA)	Cooling	69	70	71	73	70	71	73
WEIGHT (kg)		53	75	99	99	77	101	101
DIMENSIONS (mm)	Width x Depth x Height	840 x 330 x 880	950 x 330 + 30 x 943	950 x 330 + 30 x 1350	950 x 330 + 30 x 1350	950 x 330 + 30 x 943	950 x 330 + 30 x 1350	950 x 330 + 30 x 1350
ELECTRICAL SUPPLY		220-240v, 50Hz	220-240v, 50Hz	220-240v, 50Hz	220-240v, 50Hz	380-415v, 50Hz	380-415v, 50Hz	380-415v, 50Hz
PHASE		Single	Single	Single	Single	Three	Three	Three
SYSTEM POWER INPUT (kW)	Heating/Cooling (nominal)	2.25 / 2.10	3.28 / 3.12	4.11 / 4.09	4.98 / 5.21	3.28 / 3.12	4.11 / 4.09	4.98 / 5.21
	Heating/Cooling (UK)	2.00 / 1.79	2.92 / 2.65	3.66 / 3.48	4.43 / 4.43	2.92 / 2.65	3.66 / 3.48	4.43 / 4.43
STARTING CURRENT (A)		9.7	12.0	15.0	15.0	4.0	5.0	5.0
SYSTEM RUNNING CURRENT (A)	Heating/Cooling [MAX]	9.38 / 9.36 [16.6]	15.89 / 14.3 [28.9]	17.89 / 18.48 [29.0]	21.81 / 22.72 [30.5]	6.24 / 5.72 [13.9]	6.93 / 7.18 [14.0]	8.36 / 8.65 [14.0]
FUSE RATING (BS88) - HRC (A)		20	32	32	40	16	16	16
MAINS CABLE No. Cores		3	3	3	3	5	5	5
MAX PIPE LENGTH (m)		30	30	40	40	30	40	40
MAX HEIGHT DIFFERENCE (m)		30	30	30	30	30	30	30
CHARGE R410A (kg)		1.9	3.0	4.5	4.5	3.0	4.5	4.5

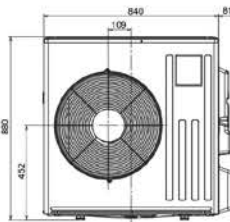
### OUTDOOR UNIT DIMENSIONS

#### SUZ-SA71VA

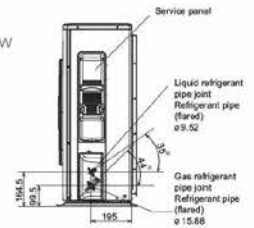
Upper View



Front View

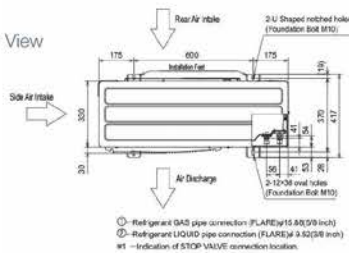


Side View

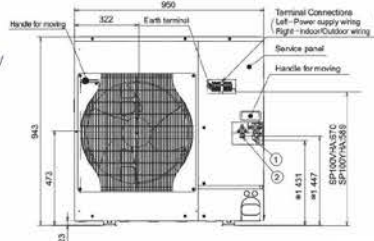


#### PUHZ-SP100VHA, PUHZ-SP100YHA

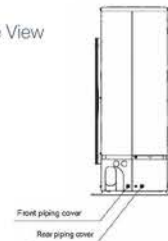
Upper View



Front View

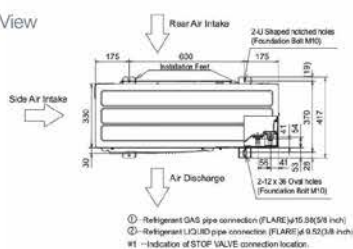


Side View

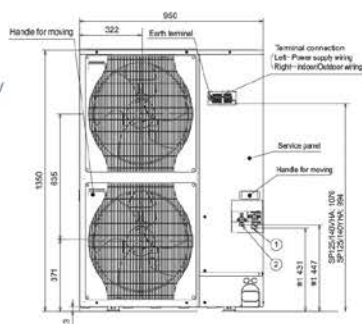


#### PUHZ-SP125/140VHA, PUHZ-SP125/140YHA

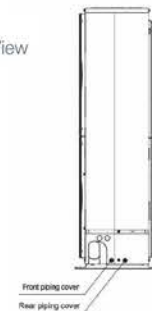
Upper View



Front View



Side View



# Accessories

## INDOOR UNITS

PLP-6BA	Grille for PLA-SP71-140BA
PLP-6BALM	Grille and infra-red controller PLA-SP71-140BA
PLP-6BAJ	Grille with filter lowering function PLA-SP71-140BA
PAC-SH53TM	Multi function casement PLA-SP71-140BA
PAC-SA1ME	Corner panel 'i-see sensor' PLA-SP71-140BA

## OUTDOOR UNITS

PAC-SG59SG	Air outlet guide for PUHZ-SP100-140YHA
------------	--

## SYSTEM CONTROL UNITS

PAC-SA89TA	Remote on/off adaptor
PAC-SA88HA	Run/fault adapter
PAC-SE41TS	Remote sensor
PAC-YT52CRA	Simplified wired remote controller
PAR-31MAA	Wired remote controller
MAC-557IF	Interface for connection to WiFi MELCloud service
IO INTERFACE	Input / output interface
MELCOBEMS MIN	Modbus / BACnet Interface
PAC-SF83MA	A/M-NET adaptor



Telephone: 01707 282880

email: [air.conditioning@meuk.mee.com](mailto:air.conditioning@meuk.mee.com) web: [www.airconditioning.mitsubishielectric.co.uk](http://www.airconditioning.mitsubishielectric.co.uk)

UNITED KINGDOM Mitsubishi Electric Europe Living Environmental Systems Division

Travellers Lane, Hatfield, Hertfordshire, AL10 8XB, England General Enquiries Telephone: 01707 282880 Fax: 01707 278881

IRELAND Mitsubishi Electric Europe Westgate Business Park, Ballymount, Dublin 24, Ireland

Telephone: Dublin (01) 419 8800 Fax: Dublin (01) 419 8890 International code: (003531)

Country of origin: United Kingdom – Japan – Thailand – Malaysia. ©Mitsubishi Electric Europe 2016. Mitsubishi and Mitsubishi Electric are trademarks of Mitsubishi Electric Europe B.V. The company reserves the right to make any variation in technical specification to the equipment described, or to withdraw or replace products without prior notification or public announcement. Mitsubishi Electric is constantly developing and improving its products. All descriptions, illustrations, drawings and specifications in this publication present only general particulars and shall not form part of any contract. All goods are supplied subject to the Company's General Conditions of Sale, a copy of which is available on request. Third-party product and brand names may be trademarks or registered trademarks of their respective owners.



Note: The fuse rating is for guidance only. Please refer to the relevant databook for detailed specification. It is the responsibility of a qualified electrician/electrical engineer to select the correct cable size and fuse rating based on current regulation and site specific conditions. Mitsubishi Electric's air conditioning and heat pump systems contain fluorinated greenhouse gases R410A, R407C and R134a.



[www.greengateway.mitsubishielectric.co.uk](http://www.greengateway.mitsubishielectric.co.uk)

Mitsubishi Electric UK's commitment to the environment

Follow us @meuk\_ies  
Follow us @green\_gateway

Mitsubishi Electric  
Living Environmental Systems UK

mitsubishielectric2

Effective as of February 2016

SAP No. 278533