

PARTS CATALOG

R410A

Outdoor unit

[Model Name]
PUHZ-W112VHA

[Service Ref.]

**PUHZ-W112VHA
PUHZ-W112VHAR1
PUHZ-W112VHAR2
PUHZ-W112VHAR3**

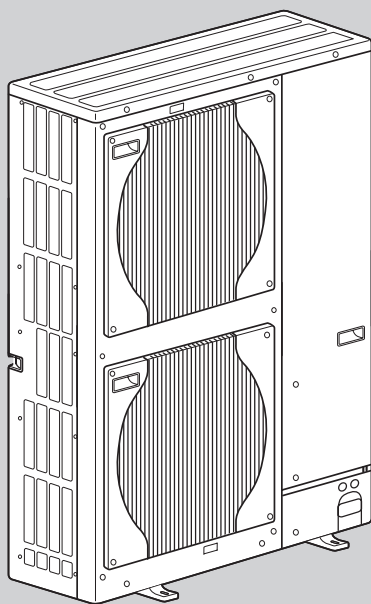
Salt proof model
PUHZ-W112VHA-BS

**PUHZ-W112VHA-BS
PUHZ-W112VHAR1-BS
PUHZ-W112VHAR2-BS
PUHZ-W112VHAR3-BS**

Revision:

- Added PUHZ-W112VHAR3 and PUHZ-W112VHAR3-BS in REVISED EDITION-C.
- Some descriptions have been modified.

- OCB562 REVISED EDITION-B is void.



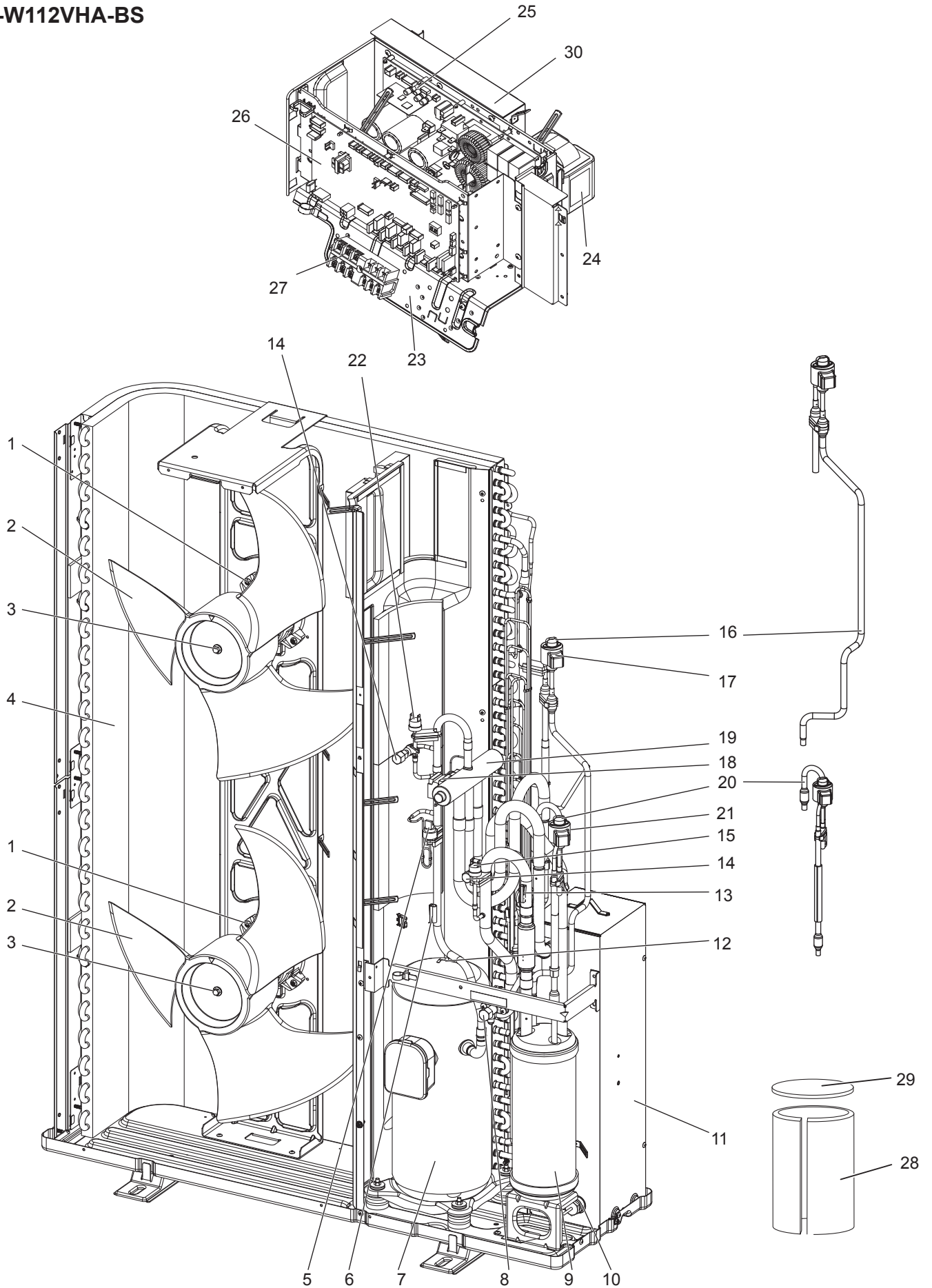
CONTENTS

- 1. SERVICE PARTS LIST 2
- 2. OPTIONAL PARTS 8

SERVICE MANUAL (OCH562)

FUNCTIONAL AND ELECTRICAL PARTS

**PUHZ-W112VHA
PUHZ-W112VHA-BS**

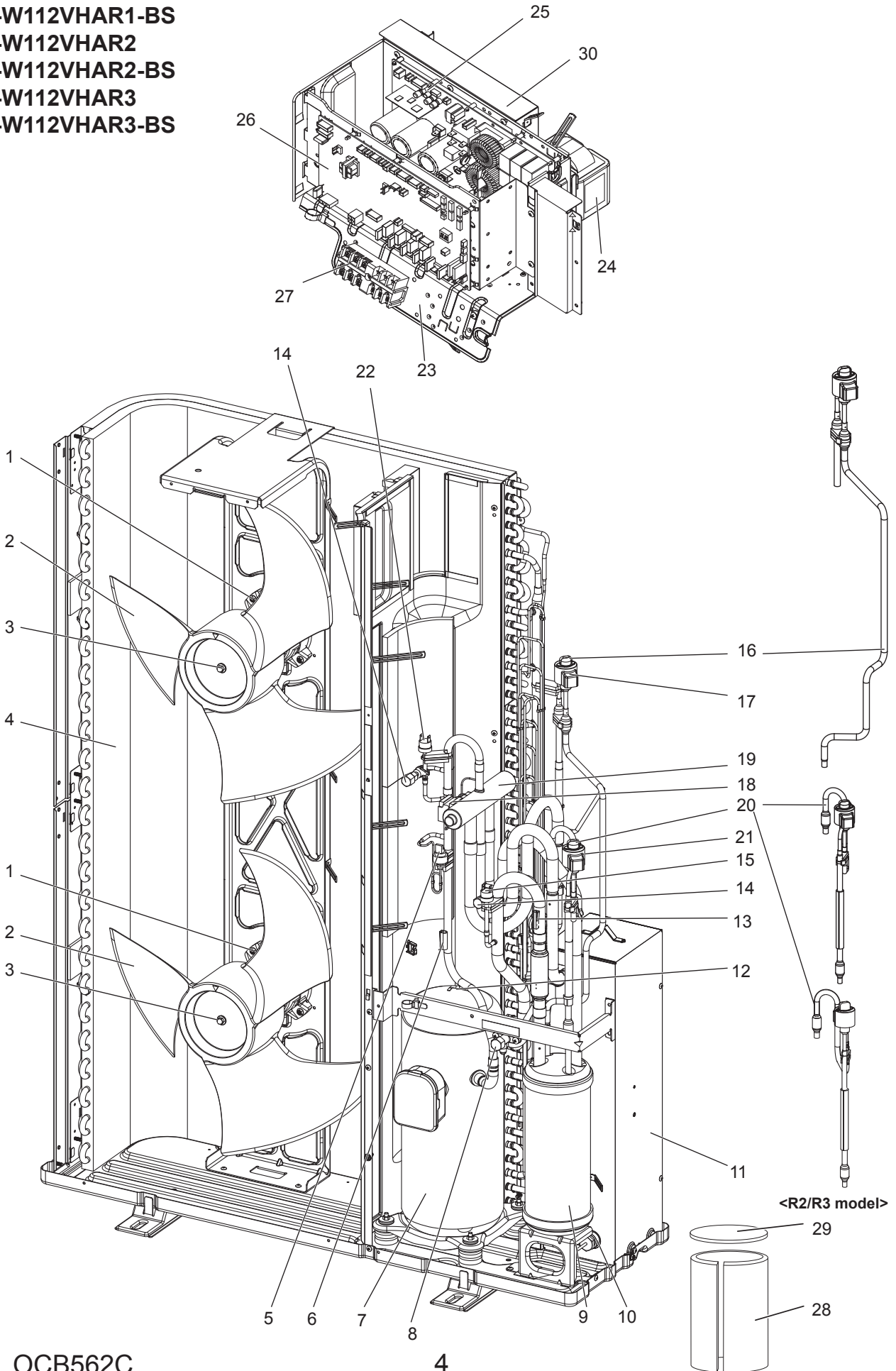


Parts numbers that are circled are not shown in the figure.

No.	Parts No.	Parts Name	Specification	Q'ty/unit		Remarks (Drawing No.)	Wiring Diagram Symbol
				PUHZ-W112VHA	PUHZ-W112VHA-BS		
1	R01 E50 221	FAN MOTOR		2	2		MF1, 2
2	R01 E12 115	PROPELLER FAN		2	2		
3	R01 E09 097	NUT M6		2	2		
4	T7W E67 408	HEAT EXCHANGER		1	1		
5	R01 E07 208	HIGH PRESSURE SENSOR		1	1		63HS
6	R01 E22 201	THERMISTOR (DIS)	Discharge	1	1		TH4
7	T97 441 077	COMPRESSOR	ANB33FNMMT	1	1	Includes RUBBER MOUNTS	MC
8	R01 E10 411	STOP VALVE 1/4 F		1	1		
9	R01 E61 440	POWER RECEIVER		1	1		
10	R01 H85 202	THERMISTOR (PLATE. HEX	Inlet Water	1	1		TH32
11	R01 H24 408	PLATE HEAT EXCHANGER		1	1		
12	R01 H90 202	THERMISTOR	Comp. Surface	1	1		TH34
13	R01 H79 202	THERMISTOR	Suction	1	1		TH33
14	R01 E24 413	CHARGE PLUG/LB90		2	2		
15	R01 E00 209	LOW PRESSURE SWITCH		1	1		63L
16	T7W E48 401	LEV ASSY-A		1	1	Includes LEV COIL and STRAINER	
17	R01 H09 242	COIL (LEV)/XAP-5P WH	UKV type	1	1		LEV-A
18	T7W E41 242	SOLENOID COIL (21S4)		1	1		21S4
19	R01 E15 403	4 WAY VALVE		1	1		21S4
20	T7W E49 401	LEV ASSY-B/P.HEX-REC		1	1	Includes LEV COIL and STRAINER	
21	R01 H08 242	COIL (LEV)/XAP-5P RED	UKV type	1	1		LEV-B
22	R01 E06 208	HIGH PRESSURE SWITCH		1	1		63H
23	—	ELECTRICAL PARTS BOX		1	1	(BK00C681G32)	
24	T7W E24 259	REACTOR		1	1		DCL
25	T7W AC0 323	POWER BOARD		1	1		P.B.
26	T7W G90 315	CONTROLLER BOARD		1	1		C.B.
27	T7W E61 716	T.B./LNE.S1.S2.S3	6P(L,N,0,\$1,\$2,\$3)	1	1		TB1
28	R01 A56 602	COMP FELT (BODY)		1	1		
29	R01 A57 602	COMP FELT (TOP)		1	1		
30	R01 A10 371	HEAT SINK		1	1	Includes SCREWS	
③①	R01 E34 510	LEAD ASSY COMP		1	1		
③②	R01 H00 202	THERMISTOR	Liquid	1	1		TH3
③③	R01 H99 202	THERMISTOR W	Plate HEX Liquid, Ambient	1	1	Combined Port	TH6, 7
③④	R01 E20 254	CAPACITOR		1	1		CB
③⑤	R01 E14 239	FUSE 6.3A 250V	6.3 A, 250 V	4	4		F1, 2, 3, 4

FUNCTIONAL AND ELECTRICAL PARTS

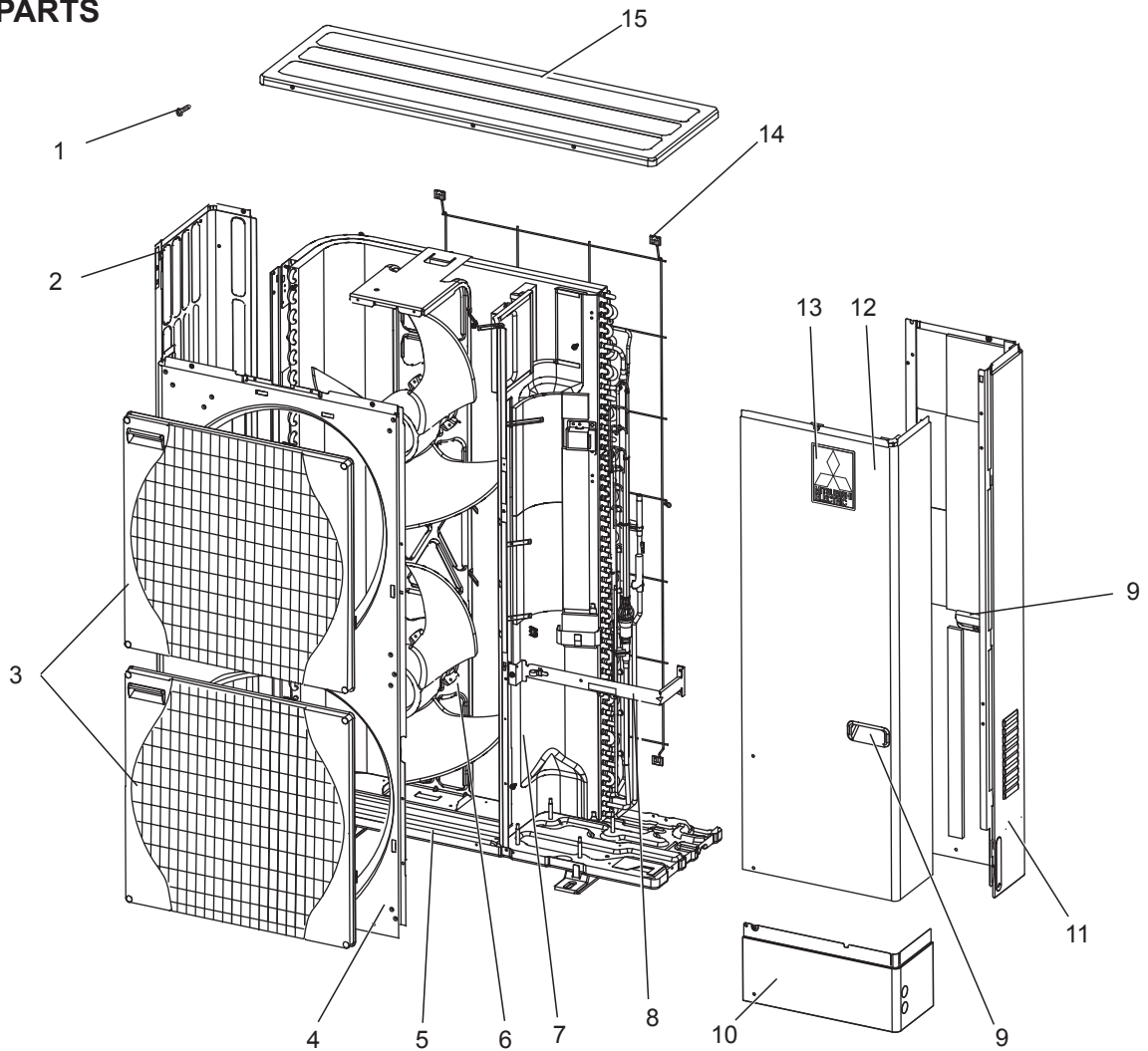
- PUHZ-W112VHAR1
- PUHZ-W112VHAR1-BS
- PUHZ-W112VHAR2
- PUHZ-W112VHAR2-BS
- PUHZ-W112VHAR3
- PUHZ-W112VHAR3-BS



Parts numbers that are circled are not shown in the figure.

No.	Parts No.	Parts Name	Specification	Q'ty/unit						Remarks (Drawing No.)	Wiring Diagram Symbol
				PUHZ-W112VHAR1	PUHZ-W112VHAR1-BS	PUHZ-W112VHAR2	PUHZ-W112VHAR2-BS	PUHZ-W112VHAR3	PUHZ-W112VHAR3-BS		
1	R01 E88 221	FAN MOTOR		2	2	2	2	2	2		MF1, 2
2	R01 E12 115	PROPELLER FAN		2	2	2	2	2	2		
3	R01 E09 097	NUT M6		2	2						
	R01 E16 097	CAP NUT (MEC) M6				2	2	2	2		
4	T7W H67 408	HEAT EXCHANGER		1	1	1	1	1	1		
5	R01 H07 208	HIGH PRESSURE SENSOR		1	1	1	1	1	1		63HS
6	R01 E22 201	THERMISTOR (DIS)	Discharge	1	1	1	1	1	1		TH4
7	T97 478 077	COMPRESSOR	ANB33FNMMT	1	1	1	1	1	1	Includes RUBBER MOUNTS	MC
8	R01 E10 411	STOP VALVE 1/4 F		1	1	1	1	1	1		
9	R01 H61 440	POWER RECEIVER		1	1	1	1	1	1		
	R01 H85 202	THERMISTOR (PLATE. HEX	Inlet Water	1	1	1	1			R1/4	TH32
10	R01 H78 202	THERMISTOR (PLATE. HEX	Inlet Water					1	1	R1/2. R1/4 SET	TH32
	R01 R24 408	PLATE HEAT EXCHANGER		1	1	1	1			R1/4	
11	T7W W01 408	PLATE HEAT EXCHANGER						1	1	R1/2	
	R01 H90 202	THERMISTOR	Comp. Surface	1	1	1	1	1	1		TH34
13	R01 H79 202	THERMISTOR	Suction	1	1	1	1	1	1		TH33
14	R01 E24 413	CHARGE PLUG/LB90		2	2	2	2	2	2		
15	R01 H00 209	LOW PRESSURE SWITCH		1	1	1	1	1	1		63L
16	T7W H48 401	LEV ASSY-A		1	1	1	1	1	1	Includes LEV COIL and STRAINER	
17	R01 HR9 242	COIL (LEV)/XAP-5P WH	UKV type	1	1	1	1	1	1		LEV-A
18	T7W H87 242	SOLENOID COIL (21S4)		1	1	1	1	1	1		21S4
19	R01 E15 403	4 WAY VALVE		1	1	1	1	1	1		21S4
20	T7W E49 401	LEV ASSY-B/P.HEX-REC		1	1					Includes LEV COIL and STRAINER	
	T7W H01 401	LEV ASSY-B/P.HEX-REC				1	1	1	1	Includes LEV COIL and STRAINER	
21	R01 HR8 242	COIL (LEV)/XAP-5P RED	UKV type	1	1	1	1	1	1		LEV-B
22	R01 H06 208	HIGH PRESSURE SWITCH		1	1	1	1	1	1		63H
23	—	ELECTRICAL PARTS BOX		1	1	1	1	1	1	(BK00C681G38)	
24	T7W E24 259	REACTOR		1	1						DCL
	T7W E31 259	REACTOR				1	1	1	1		DCL
25	T7W AR1 323	POWER BOARD		1	1	1	1	1	1		P.B.
26	T7W GW1 315	CONTROLLER BOARD		1	1						C.B.
	T7W GW2 315	CONTROLLER BOARD				1	1	1	1		C.B.
27	T7W E61 716	T.B./LNE.S1.S2.S3	6P(L,N,Ⓢ,S1,S2,S3)	1	1	1	1	1	1		TB1
28	R01 A56 602	COMP FELT (BODY)		1	1						
	T7W A16 602	COMP FELT (BODY)				1	1	1	1		
29	R01 A57 602	COMP FELT (TOP)		1	1	1	1	1	1		
30	R01 A10 371	HEAT SINK		1	1	1	1	1	1	Includes SCREWS	
③1	R01 E34 510	LEAD ASSY COMP		1	1	1	1	1	1		
③2	R01 HR4 202	THERMISTOR	Liquid	1	1	1	1	1	1		TH3
③3	R01 H99 202	THERMISTOR W	Plate HEX Liquid, Ambient	1	1	1	1	1	1	Combined Port	TH6, 7
③4	R01 E14 239	FUSE 6.3A 250V	6.3 A, 250 V	2	2	2	2	2	2		F3, 4
③5	R01 E21 239	FUSE 10A 250V	10 A, 250 V	2	2	2	2	2	2		F1, 2
③6	R01 E05 091	THERMISTOR HOLDER				1	1	1	1		

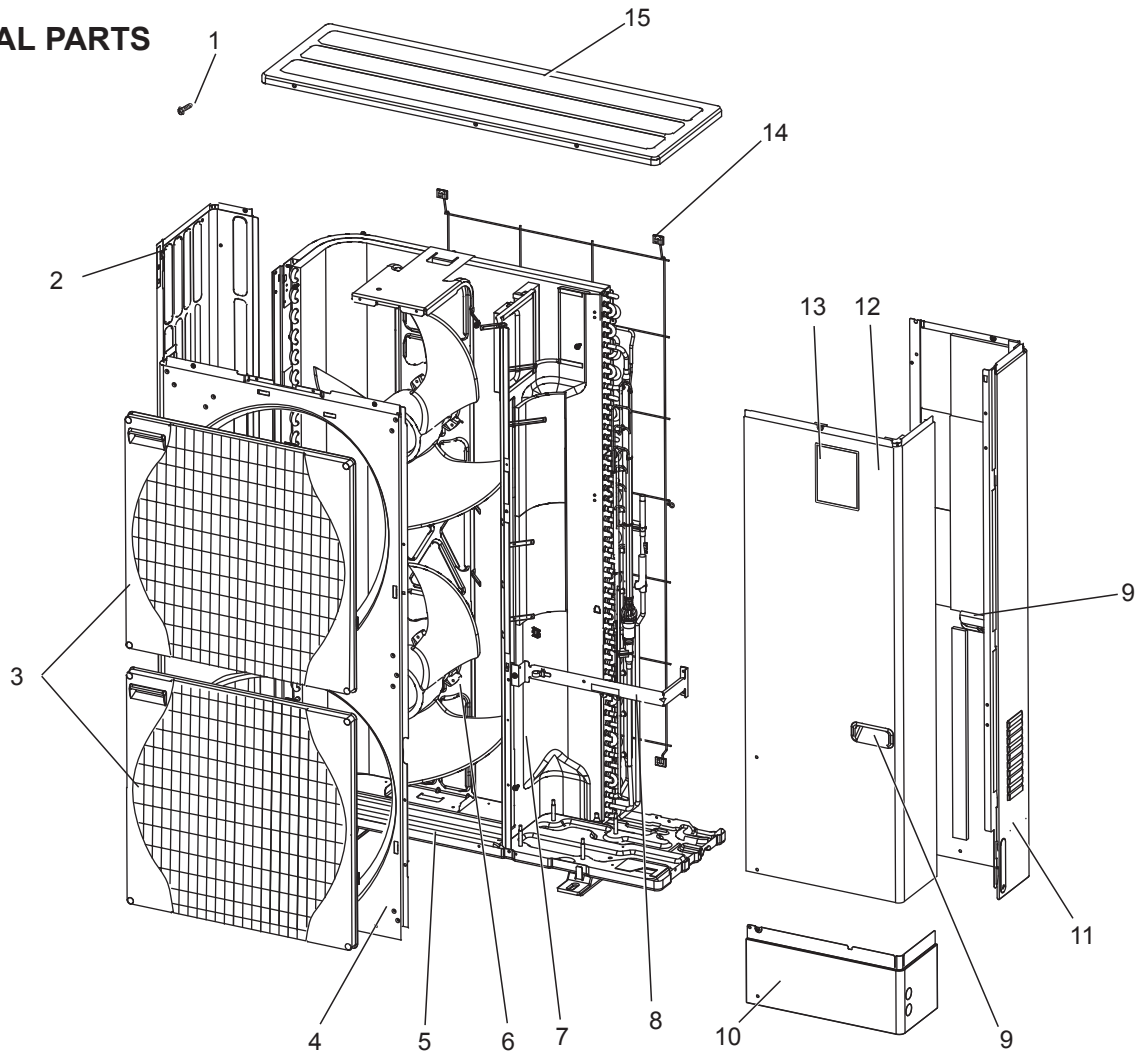
STRUCTURAL PARTS



Parts number that is circled is not shown in the figure.

No.	Parts No.	Parts Name	Specification	Q'ty/unit		Remarks (Drawing No.)	Wiring Diagram Symbol	Recom- mended Q'ty
				PUHZ- W112VHA	PUHZ- W112VHA-BS			
1	—	F.ST SCREW	(5 × 12)	36	36	(DG12F536H12)		
2	R01 E33 662	SIDE PANEL (L)		1	1			
3	R01 E33 691	GRILLE		2	2			
4	R01 E16 668	FRONT PANEL		1	1			
5	R01 E55 686	BASE		1	1			
6	R01 E19 130	MOTOR SUPPORT		1	1			
7	—	SEPARATOR		1	1	(BK00C143GM4)		
8	—	VALVE BED		1	1	(BK00G125G12)		
9	R01 E01 655	HANDLE		2	2			
10	R01 E37 658	COVER PANEL (FRONT)		1	1			
11	R01 E61 661	SIDE PANEL (R)		1	1			
12	R01 E34 667	SERVICE PANEL		1	1			
13	—	LABEL (MITSUBISHI)		1	1	(DG79R130H03)		
14	R01 E07 698	REAR GUARD		1	1			
15	R01 E34 641	TOP PANEL		1	1			
⑯	R01 E02 655	HANDLE		1	1			

STRUCTURAL PARTS



Parts number that is circled is not shown in the figure.

No.	Parts No.	Parts Name	Specification	Q'ty/unit						Remarks (Drawing No.)	Wiring Diagram Symbol	Recom- mended Q'ty
				PUHZ-W112VHAR1	PUHZ-W112VHAR1-BS	PUHZ-W112VHAR2	PUHZ-W112VHAR2-BS	PUHZ-W112VHAR3	PUHZ-W112VHAR3-BS			
1	—	F.ST SCREW	(5 × 12)	36	36	36	36	36	36	(BT12L041H12)		
2	R01 E33 662	SIDE PANEL (L)		1	1	1	1	1	1			
3	R01 E33 691	GRILLE		2	2	2	2	2	2			
4	R01 E16 668	FRONT PANEL		1	1	1	1	1	1			
5	R01 E55 686	BASE		1	1	1	1	1	1			
6	R01 E62 130	MOTOR SUPPORT		1	1	1	1	1	1			
7	—	SEPARATOR		1	1	1	1	1	1	(BK00C143GP1)		
8	—	VALVE BED		1	1	1	1	1	1	(BK00G125G14)		
9	R01 E01 655	HANDLE		2	2	2	2	2	2			
10	R01 E37 658	COVER PANEL (FRONT)		1	1	1	1	1	1			
11	R01 E61 661	SIDE PANEL (R)		1	1	1	1	1	1			
12	R01 E34 667	SERVICE PANEL		1	1	1	1	1	1			
13	T7W A03 005	BRAND LABEL (ECODAN)		1	1	1	1	1	1			
14	R01 E07 698	REAR GUARD		1	1	1	1	1	1			
15	R01 E34 641	TOP PANEL		1	1	1	1	1	1			
⑩	R01 E02 655	HANDLE		1	1	1	1	1	1			

Parts name	Parts No.
AIR OUTLET GUIDE (need 2 pieces.)	PAC-SG59SG-E
AIR PROTECTION GUIDE (need 2 pieces.)	PAC-SH63AG-E
DRAIN SOCKET	PAC-SG61DS-E
CONNECTOR FOR DRAIN HOSE HEATER	PAC-SE60RA-E

mitsubishi electric corporation

HEAD OFFICE: TOKYO BUILDING, 2-7-3, MARUNOUCHI, CHIYODA-KU, TOKYO 100-8310, JAPAN