

Revision D:

• MUZ-SF25/35/42VE - **E3**, **ER3**, **ET3** and
MUZ-SF25/35/42VEH - **E2**, **ER2**, **ET2** have
been added.

Please void OBB629 REVISED EDITION-C.

OUTDOOR UNIT PARTS CATALOG

No. OBB629
REVISED EDITION-D

Models

MUZ-SF25VE - **E1**, **E2**, **E3**, **ER2**, **ER3**, **ET2**, **ET3**

MUZ-SF25VEH - **E1**, **E2**, **ER2**, **ET1**, **ET2**

MUZ-SF35VE - **E1**, **E2**, **E3**, **ER2**, **ER3**, **ET2**, **ET3**

MUZ-SF35VEH - **E1**, **E2**, **ER2**, **ET1**, **ET2**

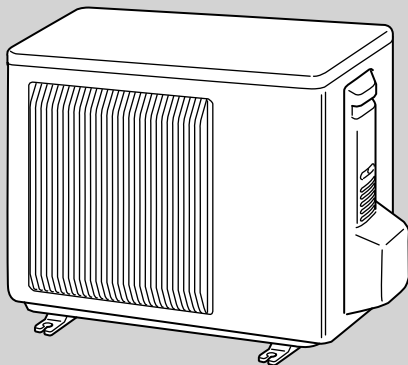
MUZ-SF42VE - **E1**, **E2**, **E3**, **ER2**, **ER3**, **ET2**, **ET3**

MUZ-SF42VEH - **E1**, **E2**, **ER2**, **ET1**, **ET2**

MUZ-SF50VE - **E1**, **ER1**, **ET1**

MUZ-SF50VEH - **E1**, **ET1**

MUZ-SF25VE MUZ-SF25VEH
MUZ-SF35VE MUZ-SF35VEH
MUZ-SF42VE MUZ-SF42VEH



CONTENTS

1. RoHS PARTS LIST..... 2

SERVICE MANUAL (OBH629)

NOTE:
RoHS compliant products have <G> mark on the spec name plate.



Revision A:

• MUZ-SF25/35/42VE - [E2] have been added.

Revision B:

• MUZ-SF25/35/42VE - [ER2], MUZ-SF50VE - [ER1] and MUZ-SF25/35/42/50VEH - [ER1] have been added.

Revision C:

• MUZ-SF25/35/42VE - [ET2], MUZ-SF50VE - [ET1] and MUZ-SF25/35/42/50VEH - [ET1] have been added.

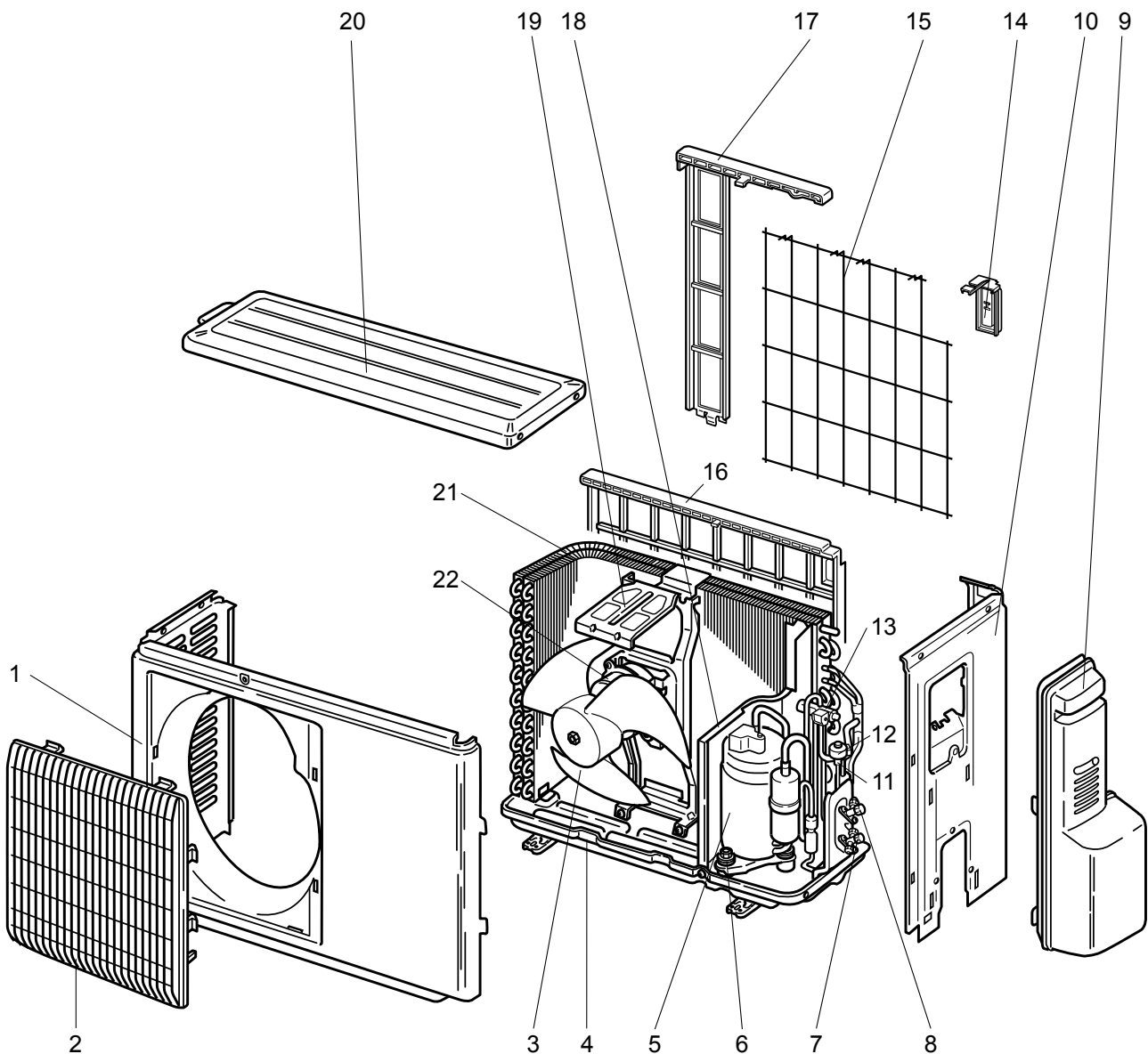
Revision D:

• MUZ-SF25/35/42VE - [E3], [ER3], [ET3] and MUZ-SF25/35/42VEH - [E2], [ER2], [ET2] have been added.

1 RoHS PARTS LIST

MUZ-SF25VE

1-1. OUTDOOR UNIT STRUCTURAL PARTS AND FUNCTIONAL PARTS



RoHS PARTS LIST

1-1. OUTDOOR UNIT STRUCTURAL PARTS AND FUNCTIONAL PARTS

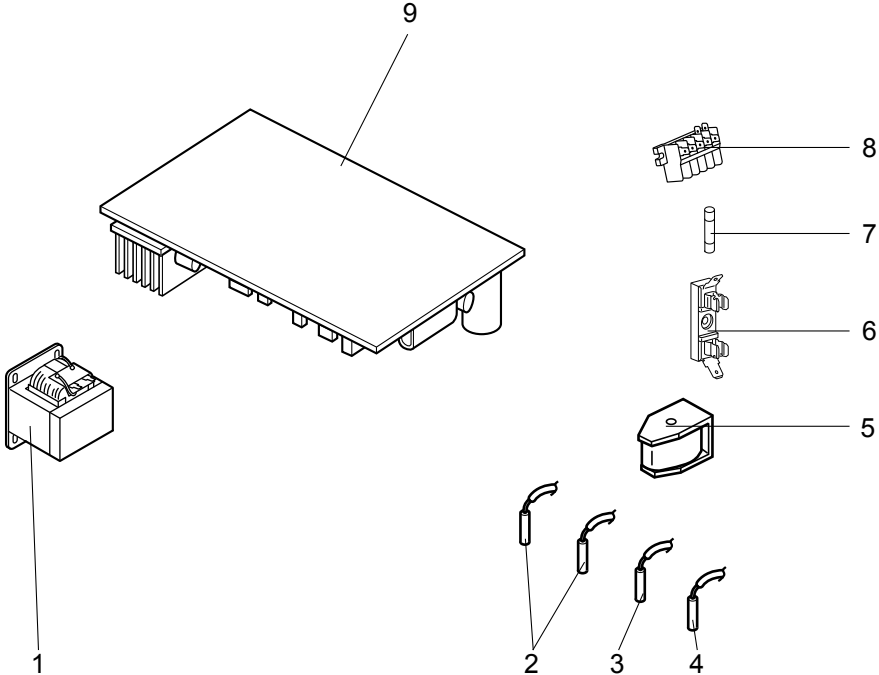
Part numbers that are circled are not shown in the illustration.

No.	RoHS	Part No.	Part Name	Symbol in Wiring Diagram	Q'ty/unit							Remarks
					MUZ-SF25							
					VE - [E1]	VE - [E2]	VE - [E3]	VE - [ER2]	VE - [ER3]	VE - [ET2]	VE - [ET3]	
1	G	E12 A89 232	CABINET		1	1	1	1	1	1	1	
2	G	E12 927 521	GRILLE		1	1	1	1	1	1	1	
3	G	E12 927 501	PROPELLER FAN		1	1	1	1	1	1	1	
4	G	E12 A89 290	BASE		1	1	1	1	1	1	1	
5	G	E12 H18 900	COMPRESSOR	MC	1	1	1	1	1	1	1	KNB073FKVMC
6	G	E12 065 506	COMPRESSOR RUBBER SET		3	3	3	3	3	3	3	3 RUBBERS/SET
7	G	E12 D69 661	STOP VALVE (GAS)		1	1	1	1	1	1	1	ø9.52
8	G	E12 D58 662	STOP VALVE (LIQUID)		1	1	1	1	1	1	1	ø6.35
9	G	E12 927 245	SERVICE PANEL		1	1	1	1	1	1	1	
10	G	E12 G11 233	BACK PANEL		1	1	1	1	1	1	1	
11	G	E12 927 640	EXPANSION VALVE		1	1	1	1	1	1	1	
12	G	E12 G10 493	EXPANSION VALVE COIL	LEV	1	1	1	1	1	1	1	
13	G	E12 927 961	4-WAY VALVE		1	1	1	1	1	1	1	
14	G	E12 928 079	THERMO HOLDER			1	1	1	1	1	1	
15	G	E12 928 525	CONDENSER WIRE NET			1	1	1	1	1	1	
16	G	E12 H18 523	CONDENSER NET		1							
17	G	E12 H22 523	CONDENSER NET			1	1	1	1	1	1	
18	G	E12 G10 293	SEPARATOR		1	1	1	1	1	1	1	
19	G	E12 927 515	MOTOR SUPPORT		1	1	1	1	1	1	1	
20	G	E12 927 297	TOP PANEL		1	1	1	1	1	1	1	
21	G	E12 H18 630	OUTDOOR HEAT EXCHANGER		1	1	1	1	1	1	1	
22	G	E12 G11 301	OUTDOOR FAN	MF	1	1		1		1		RC0J50-□□
	G	E12 P03 301	MOTOR				1		1		1	RC0J50-□□
②3	G	E12 927 937	CAPILLARY TUBE		1	1	1	1	1	1	1	ø3.0×ø2.0×240
②4	G	E12 838 704	DRAIN SOCKET		1	1	1	1	1	1	1	

RoHS PARTS LIST

MUZ-SF25VE

1-2. OUTDOOR UNIT ELECTRICAL PARTS



RoHS PARTS LIST

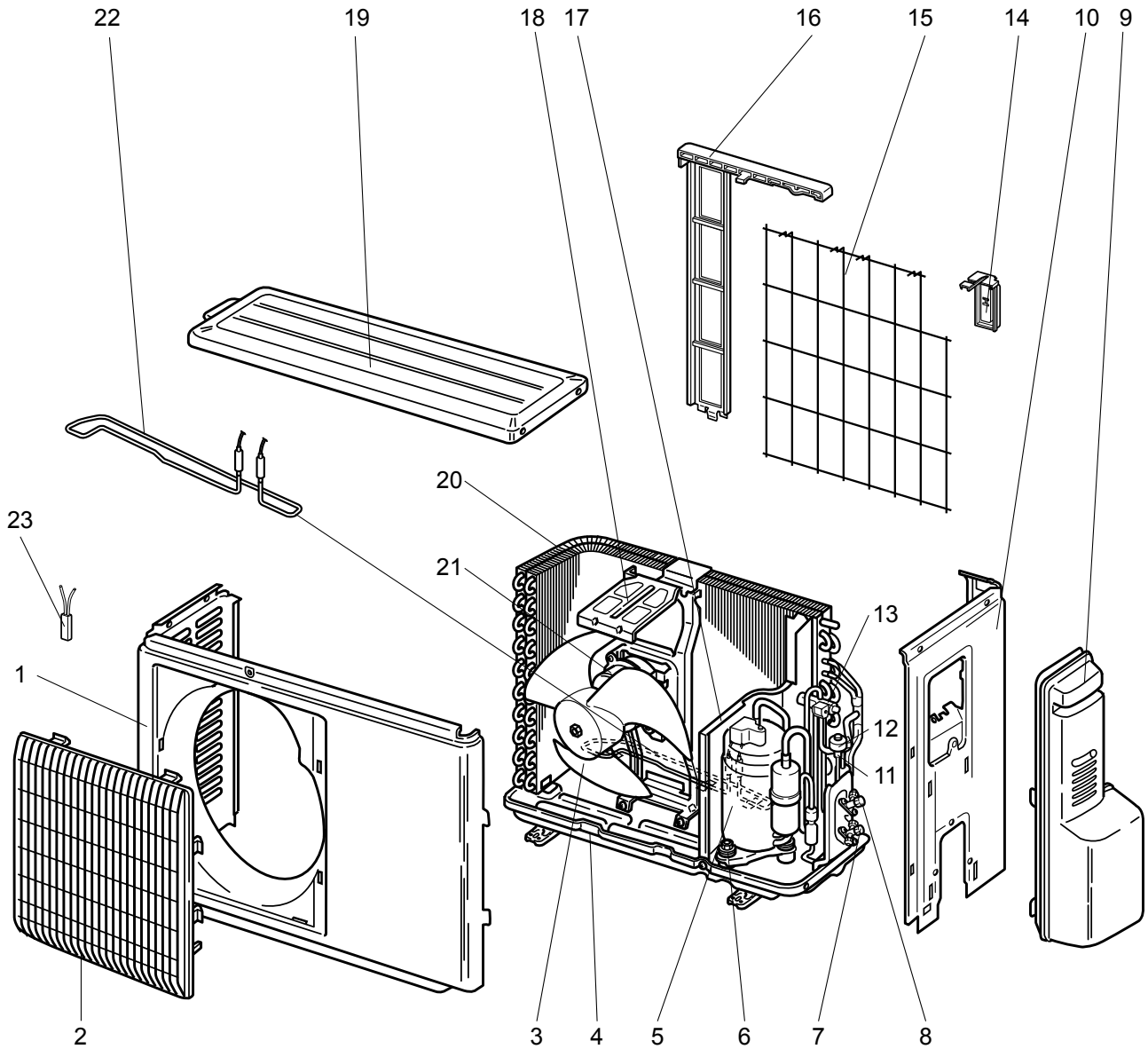
1-2. OUTDOOR UNIT ELECTRICAL PARTS

No.	RoHS	Part No.	Part Name	Symbol in Wiring Diagram	Q'ty/unit							Remarks
					MUZ-SF25							
					VE - [E1]	VE - [E2]	VE - [E3]	VE - [ER2]	VE - [ER3]	VE - [ET2]	VE - [ET3]	
1	G	E12 G10 337	REACTOR	L61	1	1	1	1	1	1	1	
2	G	E12 C34 306	THERMISTOR SET	RT61, RT62	1	1	1	1	1	1	1	DEFROST, DISCHARGE
3	G	E12 G10 309	AMBIENT TEMPERATURE THERMISTOR	RT65	1	1	1	1	1	1	1	
4	G	E12 C34 307	OUTDOOR HEAT EXCHANGER TEMPERATURE THERMISTOR	RT68	1	1	1	1	1	1	1	
5	G	E12 G10 490	R.V. COIL	21S4	1	1	1	1	1	1	1	
6	G	E12 735 241	FUSE HOLDER		1	1	1	1	1	1	1	
7	G	E12 735 382	FUSE	F61	1	1	1	1	1	1	1	T20AL250V
8	G	E12 G16 374	TERMINAL BLOCK	TB	1	1	1	1	1	1	1	5 P
9	G	E12 H18 451	INVERTER P.C. BOARD		1	1		1		1		Including heat sink and RT64
	G	E12 P13 451					1			1		

RoHS PARTS LIST

MUZ-SF25VEH

1-3. OUTDOOR UNIT STRUCTURAL PARTS AND FUNCTIONAL PARTS



RoHS PARTS LIST

1-3. OUTDOOR UNIT STRUCTURAL PARTS AND FUNCTIONAL PARTS

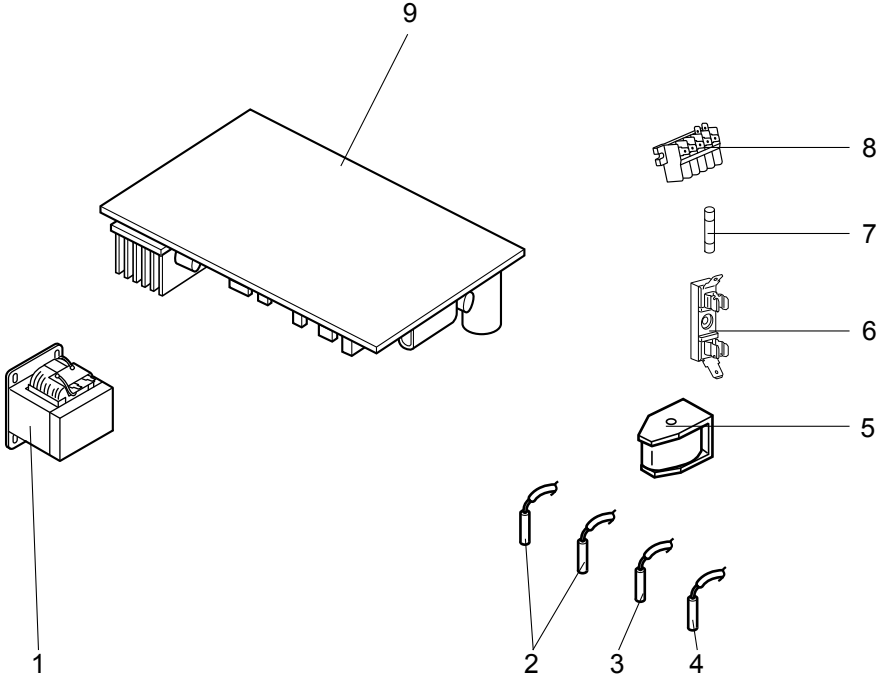
Part number that is circled is not shown in the illustration.

No.	RoHS	Part No.	Part Name	Symbol in Wiring Diagram	Q'ty/unit					Remarks
					MUZ-SF25					
					VEH - [E1]	VEH - [E2]	VEH - [ER2]	VEH - [ET1]	VEH - [ET2]	
1	G	E12 A89 232	CABINET		1	1	1	1	1	
2	G	E12 927 521	GRILLE		1	1	1	1	1	
3	G	E12 927 501	PROPELLER FAN		1	1	1	1	1	
4	G	E12 H22 290	BASE		1	1	1	1	1	
5	G	E12 H18 900	COMPRESSOR	MC	1	1	1	1	1	KNB073FKVMC
6	G	E12 065 506	COMPRESSOR RUBBER SET		3	3	3	3	3	3 RUBBERS/SET
7	G	E12 D69 661	STOP VALVE (GAS)		1	1	1	1	1	ø9.52
8	G	E12 D58 662	STOP VALVE (LIQUID)		1	1	1	1	1	ø6.35
9	G	E12 927 245	SERVICE PANEL		1	1	1	1	1	
10	G	E12 G13 233	BACK PANEL		1	1	1	1	1	
11	G	E12 927 640	EXPANSION VALVE		1	1	1	1	1	
12	G	E12 G10 493	EXPANSION VALVE COIL	LEV	1	1	1	1	1	
13	G	E12 927 961	4-WAY VALVE		1	1	1	1	1	
14	G	E12 928 079	THERMO HOLDER		1	1	1	1	1	
15	G	E12 928 525	CONDENSER WIRE NET		1	1	1	1	1	
16	G	E12 H22 523	CONDENSER NET		1	1	1	1	1	
17	G	E12 G13 293	SEPARATOR		1	1	1	1	1	
18	G	E12 927 515	MOTOR SUPPORT		1	1	1	1	1	
19	G	E12 927 297	TOP PANEL		1	1	1	1	1	
20	G	E12 H18 630	OUTDOOR HEAT EXCHANGER		1	1	1	1	1	
21	G	E12 G11 301	OUTDOOR FAN MOTOR	MF	1			1		RC0J50-□□
	G	E12 P03 301				1	1		1	RC0J50-□□
22	G	E12 C36 526	DEFROST HEATER	H	1	1	1	1	1	
23	G	E12 C36 381	HEATER PROTECTOR	26H	1	1	1	1	1	
24	G	E12 927 937	CAPILLARY TUBE		1	1	1	1	1	ø3.0×ø2.0×240

RoHS PARTS LIST

MUZ-SF25VEH

1-4. OUTDOOR UNIT ELECTRICAL PARTS



RoHS PARTS LIST

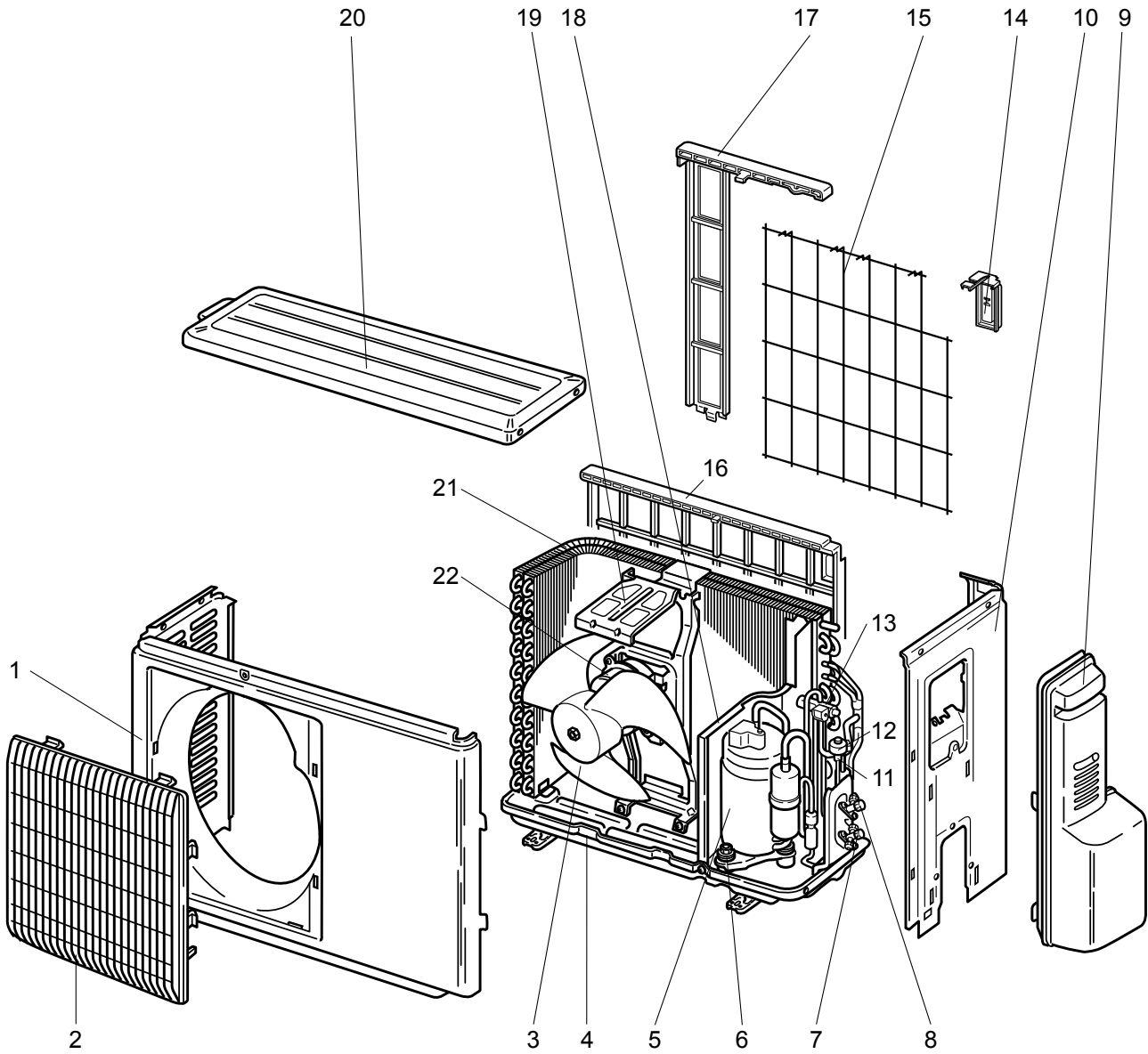
1-4. OUTDOOR UNIT ELECTRICAL PARTS

No.	RoHS	Part No.	Part Name	Symbol in Wiring Diagram	Q'ty/unit					Remarks
					MUZ-SF25					
					VEH - [E1]	VEH - [E2]	VEH - [ER2]	VEH - [ET1]	VEH - [ET2]	
1	G	E12 G10 337	REACTOR	L61	1	1	1	1	1	
2	G	E12 C34 306	THERMISTOR SET	RT61, RT62	1	1	1	1	1	DEFROST, DISCHARGE
3	G	E12 G10 309	AMBIENT TEMPERATURE THERMISTOR	RT65	1	1	1	1	1	
4	G	E12 C34 307	OUTDOOR HEAT EXCHANGER TEMPERATURE THERMISTOR	RT68	1	1	1	1	1	
5	G	E12 G10 490	R.V. COIL	21S4	1	1	1	1	1	
6	G	E12 735 241	FUSE HOLDER		1	1	1	1	1	
7	G	E12 735 382	FUSE	F61	1	1	1	1	1	T20AL250V
8	G	E12 G16 374	TERMINAL BLOCK	TB	1	1	1	1	1	5 P
9	G	E12 H22 451	INVERTER P.C. BOARD		1			1		Including heat sink and RT64
	G	E12 P19 451				1	1		1	

RoHS PARTS LIST

MUZ-SF35VE

1-5. OUTDOOR UNIT STRUCTURAL PARTS AND FUNCTIONAL PARTS



RoHS PARTS LIST

1-5. OUTDOOR UNIT STRUCTURAL PARTS AND FUNCTIONAL PARTS

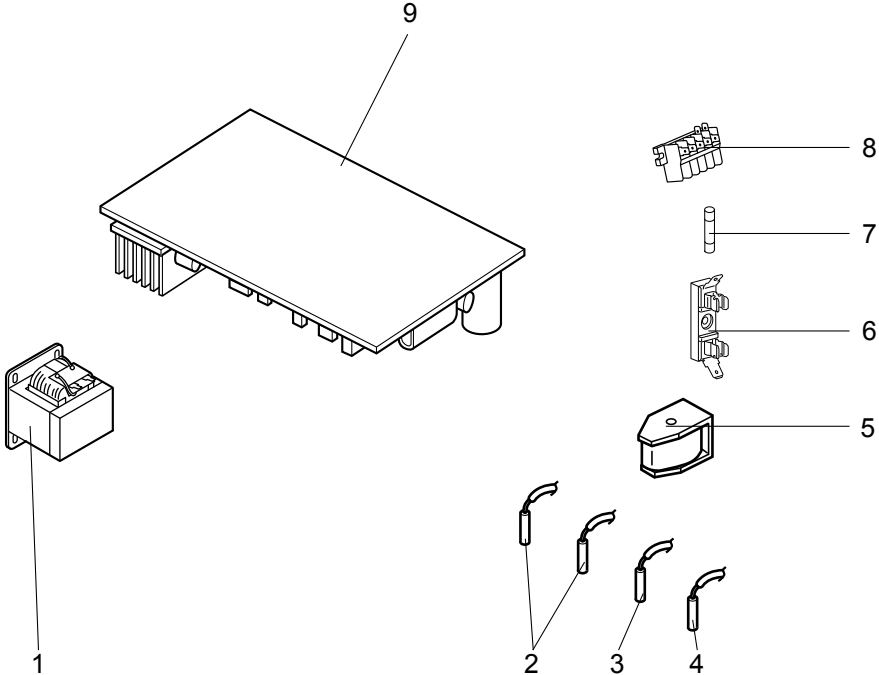
Part numbers that are circled are not shown in the illustration.

No.	RoHS	Part No.	Part Name	Symbol in Wiring Diagram	Q'ty/unit							Remarks
					MUZ-SF35							
					VE - [E1]	VE - [E2]	VE - [E3]	VE - [ER2]	VE - [ER3]	VE - [ET2]	VE - [ET3]	
1	G	E12 927 232	CABINET		1	1	1	1	1	1	1	
2	G	E12 927 521	GRILLE		1	1	1	1	1	1	1	
3	G	E12 927 501	PROPELLER FAN		1	1	1	1	1	1	1	
4	G	E12 D69 290	BASE		1	1	1	1	1	1	1	
5	G	E12 H19 900	COMPRESSOR	MC	1	1	1	1	1	1	1	KNB092FNDMC
6	G	E12 065 506	COMPRESSOR RUBBER SET		3	3	3	3	3	3	3	3 RUBBERS/SET
7	G	E12 D69 661	STOP VALVE (GAS)		1	1	1	1	1	1	1	ø9.52
8	G	E12 D58 662	STOP VALVE (LIQUID)		1	1	1	1	1	1	1	ø6.35
9	G	E12 927 245	SERVICE PANEL		1	1	1	1	1	1	1	
10	G	E12 G12 233	BACK PANEL		1	1	1	1	1	1	1	
11	G	E12 927 640	EXPANSION VALVE		1	1	1	1	1	1	1	
12	G	E12 G10 493	EXPANSION VALVE COIL	LEV	1	1	1	1	1	1	1	
13	G	E12 927 961	4-WAY VALVE		1	1	1	1	1	1	1	
14	G	E12 928 079	THERMO HOLDER			1	1	1	1	1	1	
15	G	E12 928 525	CONDENSER WIRE NET			1	1	1	1	1	1	
16	G	E12 B83 523	CONDENSER NET		1							
17	G	E12 928 523	CONDENSER NET			1	1	1	1	1	1	
18	G	E12 G10 293	SEPARATOR		1	1	1	1	1	1	1	
19	G	E12 927 515	MOTOR SUPPORT		1	1	1	1	1	1	1	
20	G	E12 927 297	TOP PANEL		1	1	1	1	1	1	1	
21	G	E12 H19 630	OUTDOOR HEAT EXCHANGER		1	1	1	1	1	1	1	
22	G	E12 G11 301	OUTDOOR FAN	MF	1	1		1		1		RC0J50-□□
	G	E12 P03 301	MOTOR				1		1		1	
②3	G	E12 927 937	CAPILLARY TUBE		1	1	1	1	1	1	1	ø3.0×ø2.0×240
②4	G	E12 838 704	DRAIN SOCKET		1	1	1	1	1	1	1	

RoHS PARTS LIST

MUZ-SF35VE

1-6. OUTDOOR UNIT ELECTRICAL PARTS



RoHS PARTS LIST

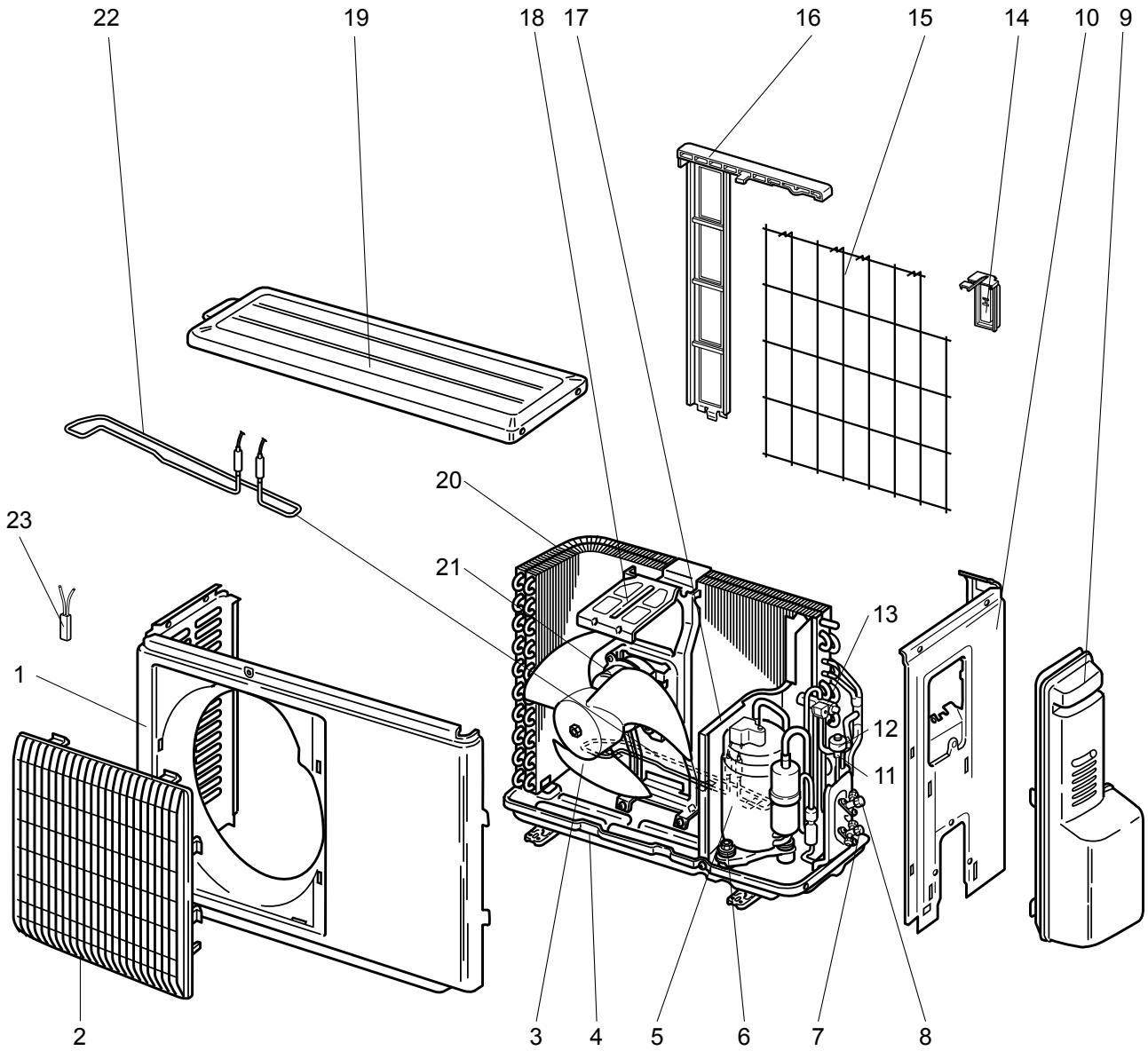
1-6. OUTDOOR UNIT ELECTRICAL PARTS

No.	RoHS	Part No.	Part Name	Symbol in Wiring Diagram	Q'ty/unit							Remarks
					MUZ-SF35							
					VE - [E1]	VE - [E2]	VE - [E3]	VE - [ER2]	VE - [ER3]	VE - [ET2]	VE - [ET3]	
1	G	E12 G11 337	REACTOR	L61	1	1	1	1	1	1	1	
2	G	E12 C34 306	THERMISTOR SET	RT61, RT62	1	1	1	1	1	1	1	DEFROST, DISCHARGE
3	G	E12 G10 309	AMBIENT TEMPERATURE THERMISTOR	RT65	1	1	1	1	1	1	1	
4	G	E12 C34 307	OUTDOOR HEAT EXCHANGER TEMPERATURE THERMISTOR	RT68	1	1	1	1	1	1	1	
5	G	E12 G10 490	R.V. COIL	21S4	1	1	1	1	1	1	1	
6	G	E12 735 241	FUSE HOLDER		1	1	1	1	1	1	1	
7	G	E12 735 382	FUSE	F61	1	1	1	1	1	1	1	T20AL250V
8	G	E12 G16 374	TERMINAL BLOCK	TB	1	1	1	1	1	1	1	5 P
9	G	E12 H19 451	INVERTER P.C. BOARD		1	1		1		1		Including heat sink and RT64
	G	E12 P14 451					1		1		1	

RoHS PARTS LIST

MUZ-SF35VEH

1-7. OUTDOOR UNIT STRUCTURAL PARTS AND FUNCTIONAL PARTS



RoHS PARTS LIST

1-7. OUTDOOR UNIT STRUCTURAL PARTS AND FUNCTIONAL PARTS

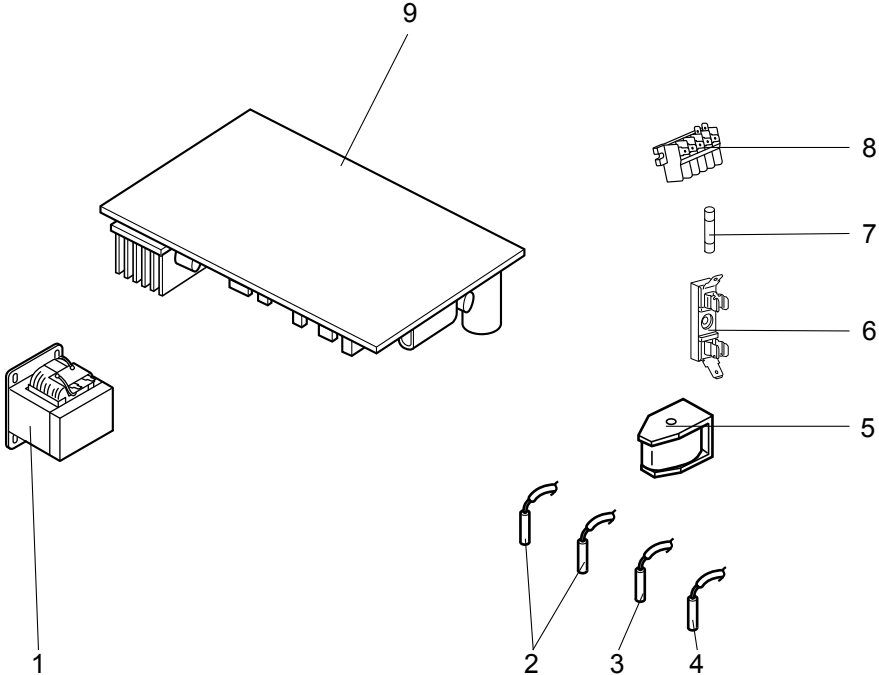
Part number that is circled is not shown in the illustration.

No.	RoHS	Part No.	Part Name	Symbol in Wiring Diagram	Q'ty/unit					Remarks
					MUZ-SF35					
					VEH - [E1]	VEH - [E2]	VEH - [ER2]	VEH - [ET1]	VEH - [ET2]	
1	G	E12 927 232	CABINET		1	1	1	1	1	
2	G	E12 927 521	GRILLE		1	1	1	1	1	
3	G	E12 927 501	PROPELLER FAN		1	1	1	1	1	
4	G	E12 D70 290	BASE		1	1	1	1	1	
5	G	E12 H19 900	COMPRESSOR	MC	1	1	1	1	1	KNB092FNDMC
6	G	E12 065 506	COMPRESSOR RUBBER SET		3	3	3	3	3	3 RUBBERS/SET
7	G	E12 D69 661	STOP VALVE (GAS)		1	1	1	1	1	ø9.52
8	G	E12 D58 662	STOP VALVE (LIQUID)		1	1	1	1	1	ø6.35
9	G	E12 927 245	SERVICE PANEL		1	1	1	1	1	
10	G	E12 G14 233	BACK PANEL		1	1	1	1	1	
11	G	E12 927 640	EXPANSION VALVE		1	1	1	1	1	
12	G	E12 G10 493	EXPANSION VALVE COIL	LEV	1	1	1	1	1	
13	G	E12 927 961	4-WAY VALVE		1	1	1	1	1	
14	G	E12 928 079	THERMO HOLDER		1	1	1	1	1	
15	G	E12 928 525	CONDENSER WIRE NET		1	1	1	1	1	
16	G	E12 928 523	CONDENSER NET		1	1	1	1	1	
17	G	E12 G13 293	SEPARATOR		1	1	1	1	1	
18	G	E12 927 515	MOTOR SUPPORT		1	1	1	1	1	
19	G	E12 927 297	TOP PANEL		1	1	1	1	1	
20	G	E12 H19 630	OUTDOOR HEAT EXCHANGER		1	1	1	1	1	
21	G	E12 G11 301	OUTDOOR FAN MOTOR	MF	1			1		RC0J50-□□
	G	E12 P03 301				1	1		1	
22	G	E12 C36 526	DEFROST HEATER	H	1	1	1	1	1	
23	G	E12 C36 381	HEATER PROTECTOR	26H	1	1	1	1	1	
24	G	E12 927 937	CAPILLARY TUBE		1	1	1	1	1	ø3.0×ø2.0×240

RoHS PARTS LIST

MUZ-SF35VEH

1-8. OUTDOOR UNIT ELECTRICAL PARTS



RoHS PARTS LIST

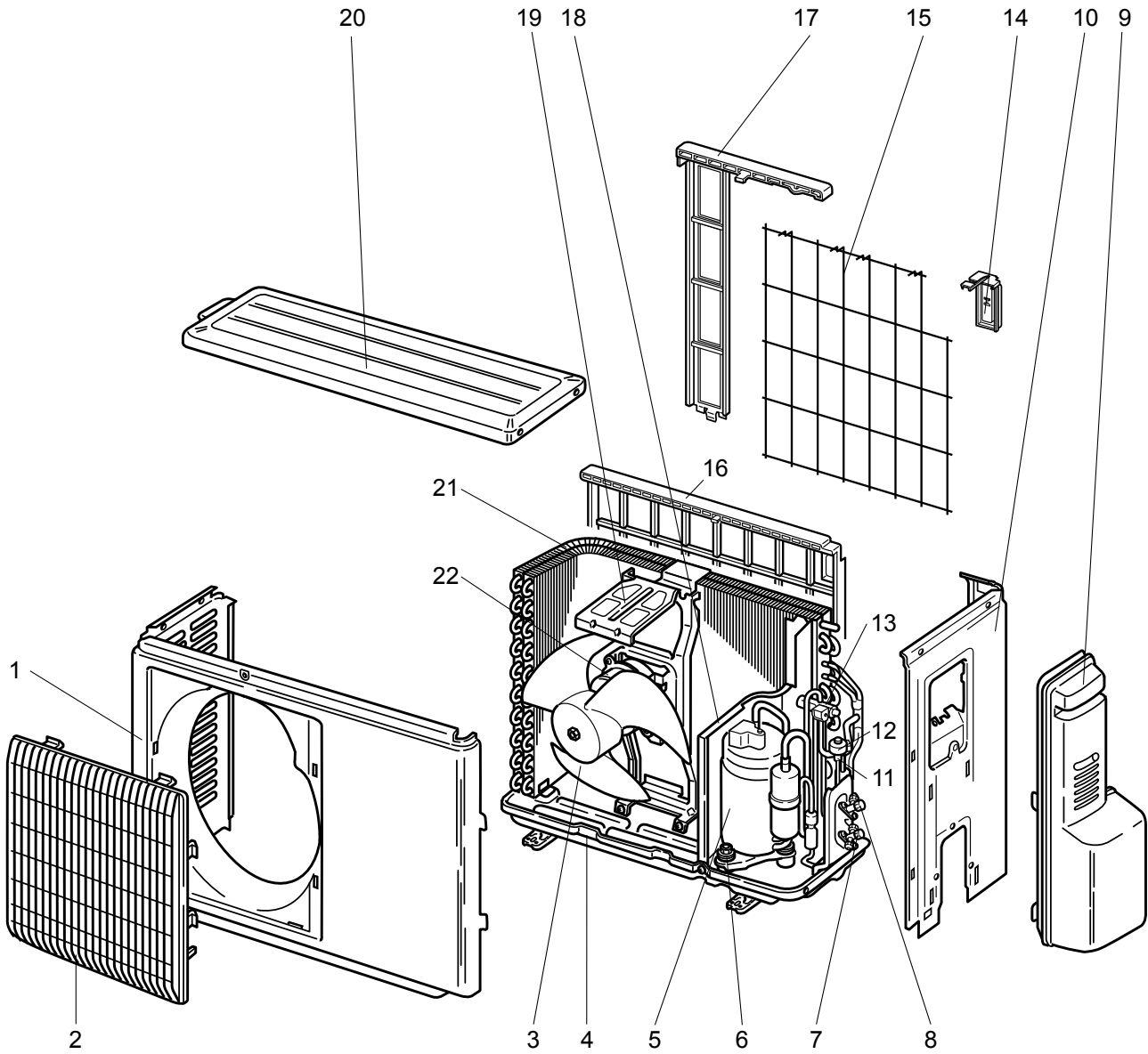
1-8. OUTDOOR UNIT ELECTRICAL PARTS

No.	RoHS	Part No.	Part Name	Symbol in Wiring Diagram	Q'ty/unit					Remarks
					MUZ-SF35					
					VEH - [E1]	VEH - [E2]	VEH - [ER2]	VEH - [ET1]	VEH - [ET2]	
1	G	E12 G11 337	REACTOR	L61	1	1	1	1	1	
2	G	E12 C34 306	THERMISTOR SET	RT61, RT62	1	1	1	1	1	DEFROST, DISCHARGE
3	G	E12 G10 309	AMBIENT TEMPERATURE THERMISTOR	RT65	1	1	1	1	1	
4	G	E12 C34 307	OUTDOOR HEAT EXCHANG- ER TEMPERATURE THER- MISTOR	RT68	1	1	1	1	1	
5	G	E12 G10 490	R.V. COIL	21S4	1	1	1	1	1	
6	G	E12 735 241	FUSE HOLDER		1	1	1	1	1	
7	G	E12 735 382	FUSE	F61	1	1	1	1	1	T20AL250V
8	G	E12 G16 374	TERMINAL BLOCK	TB	1	1	1	1	1	5 P
9	G	E12 H23 451	INVERTER P.C. BOARD		1			1		Including heat sink and RT64
	G	E12 P20 451				1	1		1	

RoHS PARTS LIST

MUZ-SF42VE

1-9. OUTDOOR UNIT STRUCTURAL PARTS AND FUNCTIONAL PARTS



RoHS PARTS LIST

1-9. OUTDOOR UNIT STRUCTURAL PARTS AND FUNCTIONAL PARTS

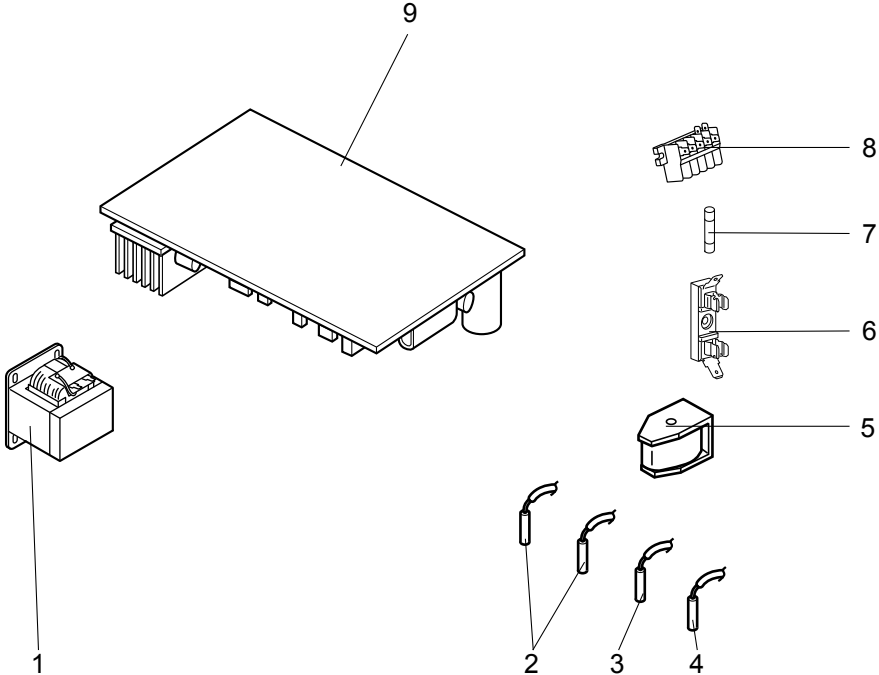
Part numbers that are circled are not shown in the illustration.

No.	RoHS	Part No.	Part Name	Symbol in Wiring Diagram	Q'ty/unit							Remarks
					MUZ-SF42							
					VE - [E1]	VE - [E2]	VE - [E3]	VE - [ER2]	VE - [ER3]	VE - [ET2]	VE - [ET3]	
1	G	E12 927 232	CABINET		1	1	1	1	1	1	1	
2	G	E12 927 521	GRILLE		1	1	1	1	1	1	1	
3	G	E12 927 501	PROPELLER FAN		1	1	1	1	1	1	1	
4	G	E12 D69 290	BASE		1	1	1	1	1	1	1	
5	G	E12 G12 900	COMPRESSOR	MC	1	1	1	1	1	1	1	SNB130FGAMT
6	G	E12 C34 506	COMPRESSOR RUBBER SET		3	3	3	3	3	3	3	3 RUBBERS/SET
7	G	E12 927 661	STOP VALVE (GAS)		1	1	1	1	1	1	1	ø9.52
8	G	E12 927 662	STOP VALVE (LIQUID)		1	1	1	1	1	1	1	ø6.35
9	G	E12 927 245	SERVICE PANEL		1	1	1	1	1	1	1	
10	G	E12 G15 233	BACK PANEL		1	1	1	1	1	1	1	
11	G	E12 A54 640	EXPANSION VALVE		1	1	1	1	1	1	1	
12	G	E12 G10 493	EXPANSION VALVE COIL	LEV	1	1	1	1	1	1	1	
13	G	E12 927 961	4-WAY VALVE		1	1	1	1	1	1	1	
14	G	E12 930 079	THERMO HOLDER			1	1	1	1	1	1	
15	G	E12 930 525	CONDENSER WIRE NET			1	1	1	1	1	1	
16	G	E12 929 523	CONDENSER NET		1							
17	G	E12 930 523	CONDENSER NET			1	1	1	1	1	1	
18	G	E12 G11 293	SEPARATOR		1	1	1	1	1	1	1	
19	G	E12 929 515	MOTOR SUPPORT		1	1	1	1	1	1	1	
20	G	E12 927 297	TOP PANEL		1	1	1	1	1	1	1	
21	G	E12 G12 630	OUTDOOR HEAT EXCHANGER		1	1	1	1	1	1	1	
22	G	E12 G11 301	OUTDOOR FAN	MF	1	1		1		1		RC0J50-□□
	G	E12 P03 301	MOTOR				1		1		1	
23	G	E12 927 937	CAPILLARY TUBE		1	1	1	1	1	1	1	ø3.0×ø2.0×240
24	G	E12 735 936	CAPILLARY TUBE		2	2	2	2	2	2	2	ø3.0×ø1.8×600
25	G	E12 838 704	DRAIN SOCKET		1	1	1	1	1	1	1	

RoHS PARTS LIST

MUZ-SF42VE

1-10. OUTDOOR UNIT ELECTRICAL PARTS



RoHS PARTS LIST

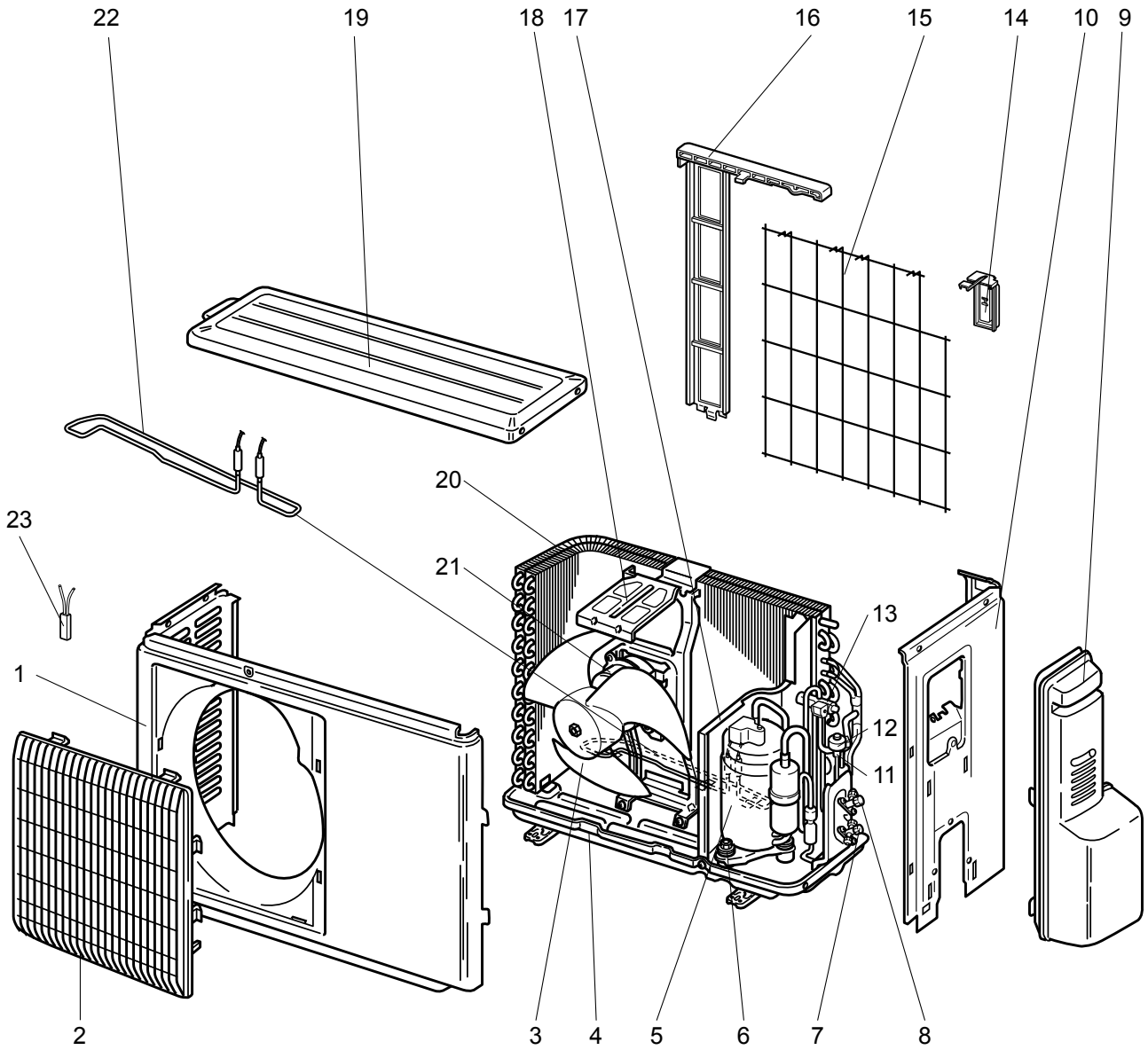
1-10. OUTDOOR UNIT ELECTRICAL PARTS

No.	RoHS	Part No.	Part Name	Symbol in Wiring Diagram	Q'ty/unit							Remarks
					MUZ-SF42							
					VE - [E1]	VE - [E2]	VE - [E3]	VE - [ER2]	VE - [ER3]	VE - [ET2]	VE - [ET3]	
1	G	E12 G11 337	REACTOR	L61	1	1	1	1	1	1	1	
2	G	E12 C34 306	THERMISTOR SET	RT61, RT62	1	1	1	1	1	1	1	DEFROST, DISCHARGE
3	G	E12 G10 309	AMBIENT TEMPERATURE THERMISTOR	RT65	1	1	1	1	1	1	1	
4	G	E12 C34 307	OUTDOOR HEAT EXCHANGER TEMPERATURE THERMISTOR	RT68	1	1	1	1	1	1	1	
5	G	E12 G10 490	R.V. COIL	21S4	1	1	1	1	1	1	1	
6	G	E12 735 241	FUSE HOLDER		1	1	1	1	1	1	1	
7	G	E12 735 382	FUSE	F61	1	1	1	1	1	1	1	T20AL250V
8	G	E12 G16 374	TERMINAL BLOCK	TB	1	1	1	1	1	1	1	5 P
9	G	E12 H20 451	INVERTER P.C. BOARD		1	1		1		1		Including heat sink and RT64
	G	E12 P15 451					1		1		1	

RoHS PARTS LIST

MUZ-SF42VEH

1-11. OUTDOOR UNIT STRUCTURAL PARTS AND FUNCTIONAL PARTS



RoHS PARTS LIST

1-11. OUTDOOR UNIT STRUCTURAL PARTS AND FUNCTIONAL PARTS

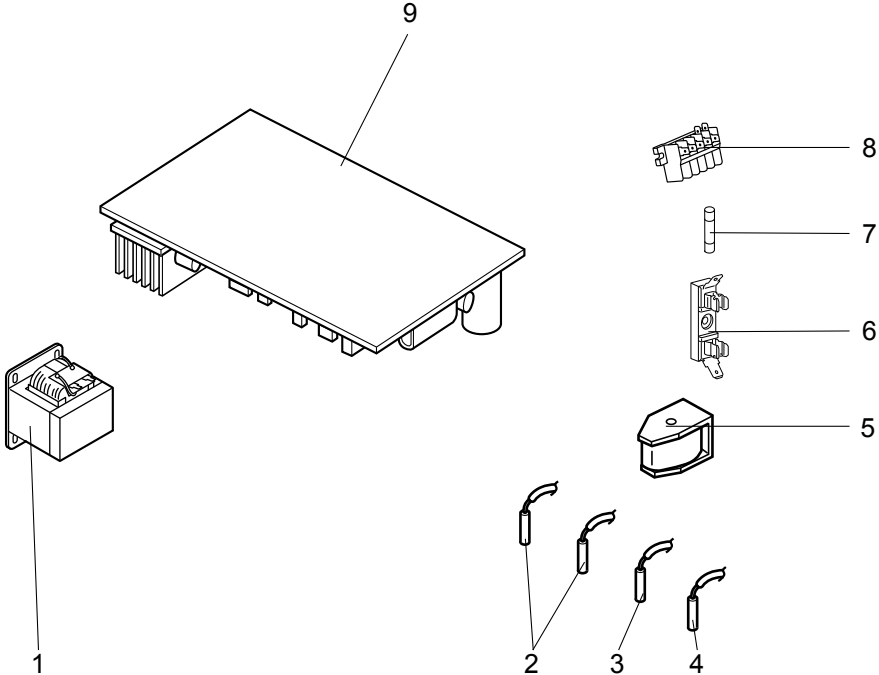
Part numbers that are circled are not shown in the illustration.

No.	RoHS	Part No.	Part Name	Symbol in Wiring Diagram	Q'ty/unit					Remarks
					MUZ-SF42					
					VEH - [E1]	VEH - [E2]	VEH - [ER2]	VEH - [ET1]	VEH - [ET2]	
1	G	E12 927 232	CABINET		1	1	1	1	1	
2	G	E12 927 521	GRILLE		1	1	1	1	1	
3	G	E12 927 501	PROPELLER FAN		1	1	1	1	1	
4	G	E12 D70 290	BASE		1	1	1	1	1	
5	G	E12 G12 900	COMPRESSOR	MC	1	1	1	1	1	SNB130FGAMT
6	G	E12 C34 506	COMPRESSOR RUBBER SET		3	3	3	3	3	3 RUBBERS/SET
7	G	E12 927 661	STOP VALVE (GAS)		1	1	1	1	1	ø9.52
8	G	E12 927 662	STOP VALVE (LIQUID)		1	1	1	1	1	ø6.35
9	G	E12 927 245	SERVICE PANEL		1	1	1	1	1	
10	G	E12 H24 233	BACK PANEL		1	1	1	1	1	
11	G	E12 A54 640	EXPANSION VALVE		1	1	1	1	1	
12	G	E12 G10 493	EXPANSION VALVE COIL	LEV	1	1	1	1	1	
13	G	E12 927 961	4-WAY VALVE		1	1	1	1	1	
14	G	E12 930 079	THERMO HOLDER		1	1	1	1	1	
15	G	E12 930 525	CONDENSER WIRE NET		1	1	1	1	1	
16	G	E12 930 523	CONDENSER NET		1	1	1	1	1	
17	G	E12 G14 293	SEPARATOR		1	1	1	1	1	
18	G	E12 929 515	MOTOR SUPPORT		1	1	1	1	1	
19	G	E12 927 297	TOP PANEL		1	1	1	1	1	
20	G	E12 G12 630	OUTDOOR HEAT EXCHANGER		1	1	1	1	1	
21	G	E12 G11 301	OUTDOOR FAN MOTOR	MF	1			1		RC0J50-□□
	G	E12 P03 301				1	1		1	
22	G	E12 C36 526	DEFROST HEATER	H	1	1	1	1	1	
23	G	E12 C36 381	HEATER PROTECTOR	26H	1	1	1	1	1	
②④	G	E12 927 937	CAPILLARY TUBE		1	1	1	1	1	ø3.0×ø2.0×240
②⑤	G	E12 735 936	CAPILLARY TUBE		2	2	2	2	2	ø3.0×ø1.8×600

RoHS PARTS LIST

MUZ-SF42VEH

1-12. OUTDOOR UNIT ELECTRICAL PARTS



RoHS PARTS LIST

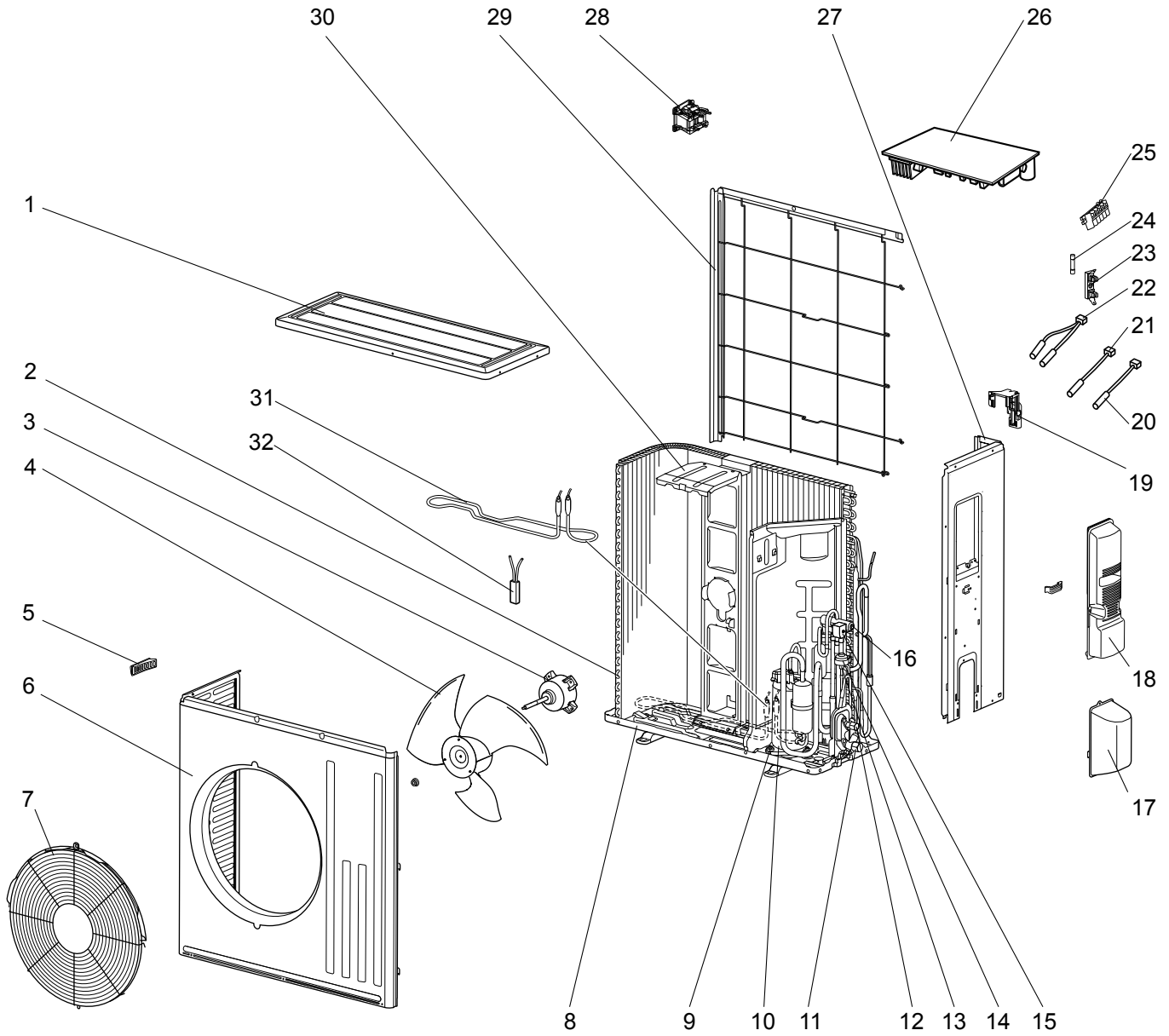
1-12. OUTDOOR UNIT ELECTRICAL PARTS

No.	RoHS	Part No.	Part Name	Symbol in Wiring Diagram	Q'ty/unit					Remarks
					MUZ-SF42					
					VEH - [E1]	VEH - [E2]	VEH - [ER2]	VEH - [ET1]	VEH - [ET2]	
1	G	E12 G11 337	REACTOR	L61	1	1	1	1	1	
2	G	E12 C34 306	THERMISTOR SET	RT61, RT62	1	1	1	1	1	DEFROST, DISCHARGE
3	G	E12 G10 309	AMBIENT TEMPERATURE THERMISTOR	RT65	1	1	1	1	1	
4	G	E12 C34 307	OUTDOOR HEAT EXCHANGER TEMPERATURE THERMISTOR	RT68	1	1	1	1	1	
5	G	E12 G10 490	R.V. COIL	21S4	1	1	1	1	1	
6	G	E12 735 241	FUSE HOLDER		1	1	1	1	1	
7	G	E12 735 382	FUSE	F61	1	1	1	1	1	T20AL250V
8	G	E12 G16 374	TERMINAL BLOCK	TB	1	1	1	1	1	5 P
9	G	E12 H24 451	INVERTER P.C. BOARD		1			1		Including heat sink and RT64
	G	E12 P21 451				1	1		1	

RoHS PARTS LIST

MUZ-SF50VE MUZ-SF50VEH

1-13. OUTDOOR UNIT STRUCTURAL PARTS, ELECTRICAL PARTS AND FUNCTIONAL PARTS



RoHS PARTS LIST

1-13. OUTDOOR UNIT STRUCTURAL PARTS, ELECTRICAL PARTS AND FUNCTIONAL PARTS

Part numbers that are circled are not shown in the illustration.

No.	RoHS	Part No.	Part Name	Symbol in Wiring Diagram	Q'ty/unit					Remarks
					MUZ-SF50					
					VE - [E1]	VE - [ER1]	VE - [ET1]	VEH - [E1]	VEH - [ET1]	
1	G	E12 F28 297	TOP PANEL		1	1	1	1	1	
2	G	E12 H21 630	OUTDOOR HEAT EXCHANGER		1	1	1	1	1	
3	G	E12 G16 301	OUTDOOR FAN MOTOR	MF	1	1	1	1	1	RC0J60-□□
4	G	E12 F28 501	PROPELLER FAN		1	1	1	1	1	
5	G	E12 817 009	HANDLE		1	1	1	1	1	
6	G	E12 F28 232	CABINET		1	1	1	1	1	
7	G	E12 F73 521	FAN GUARD		1	1	1	1	1	Including ice guard
8	G	E12 F28 290	BASE		1	1	1			
		E12 H25 290					1	1		
9	G	E12 C34 506	COMPRESSOR RUBBER SET		3	3	3	3	3	3 RUBBERS/SET
10	G	E12 F28 900	COMPRESSOR	MC	1	1	1	1	1	SNB130FGBMT
11	G	E12 G16 661	STOP VALVE (GAS)		1	1	1	1	1	ø12.7
12	G	E12 G16 662	STOP VALVE (LIQUID)		1	1	1	1	1	ø6.35
13	G	E12 851 640	EXPANSION VALVE		1	1	1	1	1	
14	G	E12 F28 493	EXPANSION VALVE COIL	LEV	1	1	1	1	1	
15	G	E12 G16 490	R.V. COIL	21S4	1	1	1	1	1	
16	G	E12 C18 961	4-WAY VALVE		1	1	1	1	1	
17	G	E12 F28 650	VALVE COVER		1	1	1	1	1	
18	G	E12 G16 245	SERVICE PANEL		1	1	1	1	1	
19	G	E12 F28 079	THERMO HOLDER		1	1	1	1	1	
20	G	E12 G16 309	AMBIENT TEMPERATURE THERMISTOR	RT65	1	1	1	1	1	
21	G	E12 G16 307	OUTDOOR HEAT EXCHANGER TEMPERATURE THERMISTOR	RT68	1	1	1	1	1	
22	G	E12 G16 308	THERMISTOR SET	RT61,RT62	1	1	1	1	1	DEFROST, DISCHARGE
23	G	E12 735 241	FUSE HOLDER		1	1	1	1	1	
24	G	E12 735 382	FUSE	F61	1	1	1	1	1	T20AL250V
25	G	E12 G16 374	TERMINAL BLOCK	TB	1	1	1	1	1	5 P
26	G	E12 H21 451	INVERTER P.C. BOARD		1	1	1			Including heat sink and RT64
	G	E12 H25 451					1	1		
27	G	E12 F28 233	BACK PANEL (OUT)		1	1	1	1	1	
28	G	E12 H21 337	REACTOR	L61	1	1	1	1	1	
29	G	E12 F28 523	CONDENSER NET		1	1		1		
	G	E12 L87 523				1		1		
30	G	E12 F28 515	MOTOR SUPPORT		1	1	1	1	1	
31	G	E12 J52 526	DEFROST HEATER	H				1	1	
32	G	E12 J52 381	HEATER PROTECTOR	26H				1	1	
③③	G	E12 262 936	CAPILLARY TUBE		1	1	1	1	1	ø4.0 × ø2.4 × 200
③④	G	E12 838 936	CAPILLARY TUBE		4	4	4	4	4	ø3.0 × ø2.0 × 200
③⑤	G	E12 527 936	CAPILLARY TUBE		1	1	1	1	1	ø4.0 × ø2.4 × 100
③⑥	G	E12 F28 704	DRAIN SOCKET		1	1	1			

MITSUBISHI ELECTRIC CORPORATION

HEAD OFFICE: TOKYO BLDG., 2-7-3, MARUNOUCHI, CHIYODA-KU, TOKYO 100-8310, JAPAN

© Copyright 2012 MITSUBISHI ELECTRIC CORPORATION
Distributed in Oct. 2014. No. OBB629 REVISED EDITION-D
Distributed in Aug. 2014. No. OBB629 REVISED EDITION-C
Distributed in Dec. 2013. No. OBB629 REVISED EDITION-B
Distributed in Aug. 2013. No. OBB629 REVISED EDITION-A
Distributed in Nov. 2012. No. OBB629
Made in Japan

New publication, effective Oct. 2014
Specifications are subject to change without notice.